

SUBMITTAL TO THE BOARD OF SUPERVISORS
COUNTY OF RIVERSIDE, STATE OF CALIFORNIA

360A



FROM: County Counsel

SUBMITTAL DATE: November 17, 2008

SUBJECT: Ordinance No. 348.4628

RECOMMENDED MOTION: That the Board of Supervisors adopt Ordinance No. 348.4628 amending the zoning in the March Area shown on Map No. 2.2299 Change of Zone Case No. 7660.

BACKGROUND: Change of Zone Case No. 7660 was tentatively approved by the Board of Supervisors on October 28, 2008.

Michelle Clark for

JOE RANK
County Counsel

C.E.O. RECOMMENDATION:

APPROVE

BY *Tina Grande*

Tina Grande

County Executive Office Signature

Policy

Policy

Consent

Consent

Department Recommendation:

Per Executive Office:

Prev. Agn. ref.

Dist. FIRST

AGENDA NO.

2.6

1 ORDINANCE NO. 348.4628

2 AN ORDINANCE OF THE COUNTY OF RIVERSIDE
3 AMENDING ORDINANCE NO. 348 RELATING TO ZONING
4

5 The Board of Supervisors of the County of Riverside Ordains as Follows:

6 Section 1. Section 4.1 of Ordinance No. 348, and official Zoning Plan Map No. 2, as
7 amended, are further amended by placing in effect in the March Area, the zone or zones as shown on the
8 map entitled "Change of Official Zoning Plan Amending Ordinance No. 348, Map No. 2. 2299, Change of
9 Zone Case No. 7660" which map is made a part of this ordinance.

10 Section 2. This ordinance shall take effect 30 days after its adoption.

11 BOARD OF SUPERVISORS OF THE COUNTY
12 OF RIVERSIDE, STATE OF CALIFORNIA

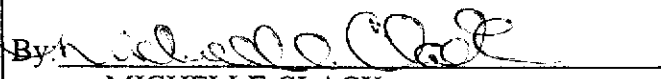
13
14 By: _____
Chairman, Board of Supervisors

15 ATTEST:
16 Clerk of the Board

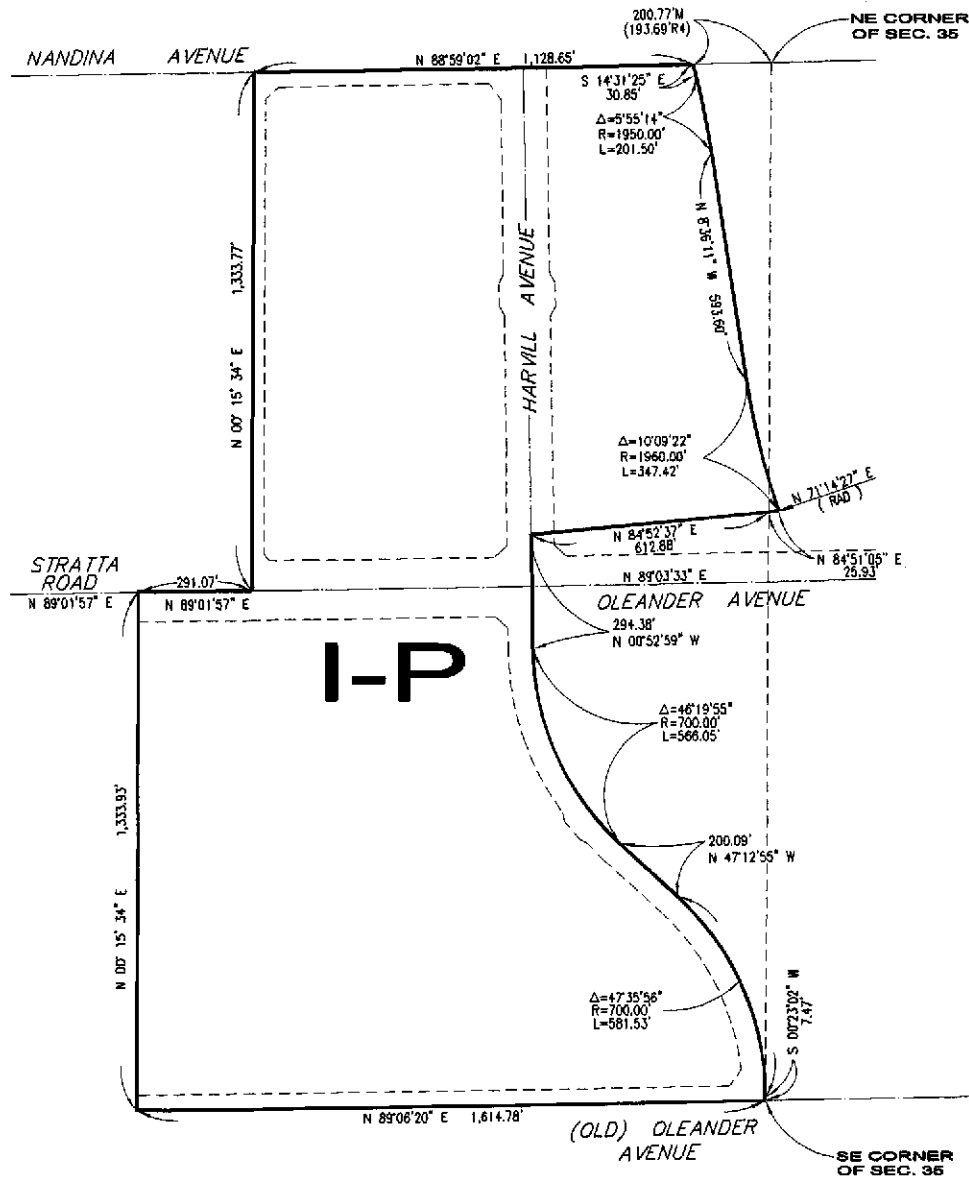
17
18 By: _____
19 Deputy

20 (SEAL)

21
22 APPROVED AS TO FORM
23 November 17, 2008

24
25 By: 
26 MICHELLE CLACK
27 Deputy County Counsel

MARCH AREA
SEC. 35, T.3S., R.4W S.B.B. & M.



LEGEND

I-P INDUSTRIAL PARK

MAP NO. 2.2299
CHANGE OF OFFICIAL ZONING PLAN
AMENDING
MAP NO. 2, ORDINANCE NO. 348
CHANGE OF ZONE CASE NO. 7660
ADOPTED BY ORDINANCE NO. 348.4628
NOVEMBER 25, 2008
RIVERSIDE COUNTY BOARD OF SUPERVISORS



ASSESSORS PARCEL NO. 295-310-011,048,052