

358A

SUBMITTAL TO THE BOARD OF SUPERVISORS
COUNTY OF RIVERSIDE, STATE OF CALIFORNIA



FROM: County Counsel

SUBMITTAL DATE: November 6, 2008

SUBJECT: Ordinance No. 348.4626

RECOMMENDED MOTION: That the Board of Supervisors adopt Ordinance No. 348.4626 amending the zoning in the Prado-Mira Loma shown on Map No. 38.138 Change of Zone Case No. 7477.

BACKGROUND: Change of Zone Case No. 7477 was tentatively approved by the Board of Supervisors on October 21, 2008.

JOE RANK
County Counsel

Larisa R-McGowan

C.E.O. RECOMMENDATION:

APPROVE

BY: Tina Grande

County Executive Office Signature

Policy
 Policy

Consent
 Consent

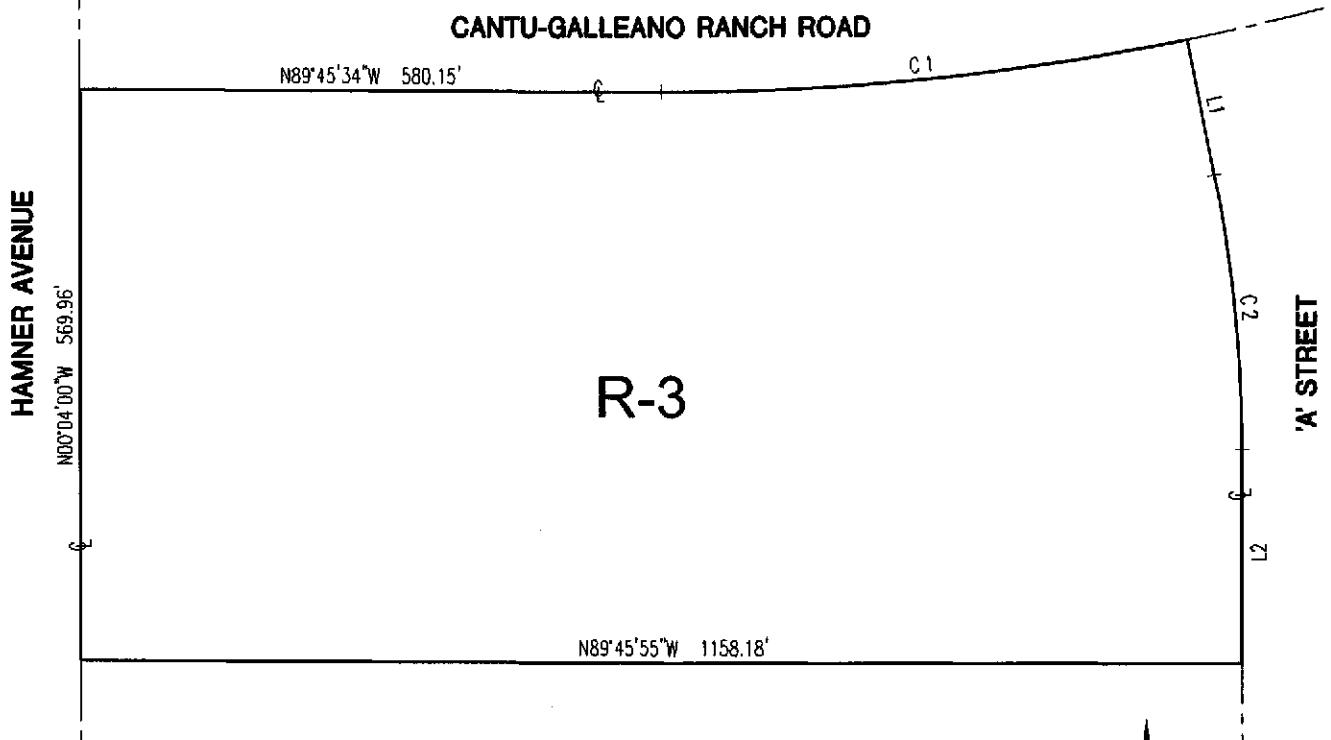
Department Recommendation:
Per Executive Office:

Prev. Agn. ref.

Dist. SECOND

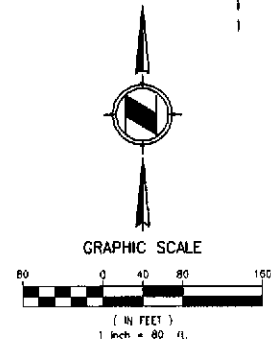
AGENDA NO.

SEC. 18, T. 2 S. R. 6 W. S.B.B & M.



CURVE TABLE				
CURVE	LENGTH	RADIUS	TANGENT	BEARING
C1	528.00'	2624.64'	264.89'	11°31'34"
C2	275.47'	1400.00'	138.18'	11°16'25"

LINE TABLE		
LINE	LENGTH	BEARING
L1	137.53'	N11°17'08\"W
L2	214.43'	N00°00'42\"W



LEGEND

R-3 GENERAL RESIDENTIAL

MAP NO. 38.138
 CHANGE OF OFFICIAL ZONING PLAN
 PRADO-MIRA LOMA
 DISTRICT

CHANGE OF ZONE CASE NO. 7477
 AMENDING ORDINANCE NO. 348
 ADOPTED BY ORDINANCE NO. 348.4626
 NOVEMBER 25, 2008

APN 160-020-024

RIVERSIDE COUNTY BOARD OF SUPERVISORS