

**SUBMITTAL TO THE BOARD OF SUPERVISORS
COUNTY OF RIVERSIDE, STATE OF CALIFORNIA**

653



FROM: TLMA – Planning Department

SUBMITTAL DATE:
December 15, 2008

SUBJECT: Riverside County Off-Highway Vehicle (OHV) Commission Phase 1 Report

RECOMMENDED MOTION: That the Board of Supervisors receive and file the OHV Commission Phase 1 report.

BACKGROUND: On February 28, 2006, the Board of Supervisors approved the formation of the Riverside County Off-Highway Vehicle Commission and directed them to identify sites for off-highway recreation, offer advice on public outreach, and report back to the Board prior to June 30, 2008. On October 2, 2007, the Commission provided the Board with an update of their activities and indicated that they would identify potential areas where OHV recreational activities may be appropriate. On June 24, 2008, the Board of Supervisors extended the Commission to December 31, 2008, to allow completion of their activities, which are summarized in the attached Phase 1 report.

With the submission of the attached report to the Board of Supervisors, the OHV Commission has completed its first phase as instructed by the Board: the identification of several possible candidate sites for use as off-highway vehicle parks, the potential extent and range of use for each possible site, and the provision of advice to County staff and decision-makers regarding public outreach for educational and informational purposes. Due to the current budget situation, the Planning Department recommends no further work at this time. Once future funding source(s) are identified, a workshop with the Board of Supervisors will be scheduled.

RG:db/dm

RON GOLDMAN
Planning Director

FINANCIAL DATA	Current F.Y. Total Cost:	\$ N/A	In Current Year Budget:	N/A
	Current F.Y. Net County Cost:	\$ N/A	Budget Adjustment:	N/A
	Annual Net County Cost:	\$ N/A	For Fiscal Year:	2008/09

SOURCE OF FUNDS: N/A	Positions To Be Deleted Per A-30	<input type="checkbox"/>
	Requires 4/5 Vote	<input type="checkbox"/>

C.E.O. RECOMMENDATION: APPROVE

County Executive Office Signature BY Tina Grande

Policy
 Policy
 Consent
 Consent
 Dep't Recomm.:
 Per Exec. Ofc.:

3.31

Prev. Agn. Ref.: 3.50 of 06/24/08 | **District:** ALL | **Agenda Number:**



**RIVERSIDE COUNTY
OFF-HIGHWAY VEHICLE COMMISSION**

**REPORT TO THE
RIVERSIDE COUNTY
BOARD OF SUPERVISORS**



December 23, 2008

TABLE OF CONTENTS

	Page
Executive Summary	
Introduction	1
Information Gathering	
Missed Opportunities and Lost Revenue	3
State Revenue Generated by OHV Riding	5
Information Gathering	7
Types of OHV Activities	7
Types of Vehicles	9
Past OHV Park Experience	11
Current Motocross Tracks in Riverside County	12
Possible Sites	
Site Selection Criteria	14
Potential Sites	
• Red Cloud Mine Road	16
• Drop 31 – All American Canal	18
• Badlands – Jack Rabbit Trail	20
• Juniper Flats Road	22
• Diamond Valley Lake/Lake Skinner	24
• Prado Mine	26
• Temescal Canyon – Corona Clay	28
Operational Concepts	30
Recommendations	32
Appendices	
A: Form 11 – Formation of a Riverside County Off-Highway Vehicle Commission	
B: Resolution No 2006-101 – Establishing the Riverside County Off-Highway Vehicle Commission	
C: Minutes of the Off-Highway Vehicle Commission	
D: Interviews of Federal, State and Local Agencies	
E: Riverside County Planning Commission, Trail Bike Park Standards (May 25, 1971)	

EXECUTIVE SUMMARY

In 1980, over 235,300 non-street licensed Off-Highway Vehicles were registered in California. By 2007, this number had increased to 1.1 million registrations, more than a 370 percent increase. The recreational utility vehicle market is one of the fastest growing segments with an increase of 273% in the past three years. With the average cost of a vehicle being \$10,000.00, major revenue is realized from both taxes and licensure fees.

Riverside County is missing a potential revenue source by not providing legal riding areas for off-highway vehicles. Riverside County accounts for 96,034 registrations, third in the State behind Los Angeles and San Diego Counties. However, funds received from the State are not commensurate with current registrations. In the past, revenue generated by the green sticker program was distributed based upon the location of the registered vehicle. In 2006, the rules were changed so that county funding is now based upon where a person rides. Since Riverside County has limited designated OHV areas, minimal funds are generated.

Riverside County received \$46,389.82 in green sticker funds in 2007. San Bernardino County, which has 6,249 fewer registered vehicles and is ranked fourth in the State for registered OHV's, received \$141,876.42, over three times more funds. Imperial County, which is ranked 25th in the State for the number of registered OHV's is ranked first in the amount of funds (\$242,578.57) received due to large designated legal OHV riding areas.

An analysis of appropriate County lands was conducted to identify potential areas where OHV usage may be appropriate. During this analysis, the following areas were eliminated from consideration:

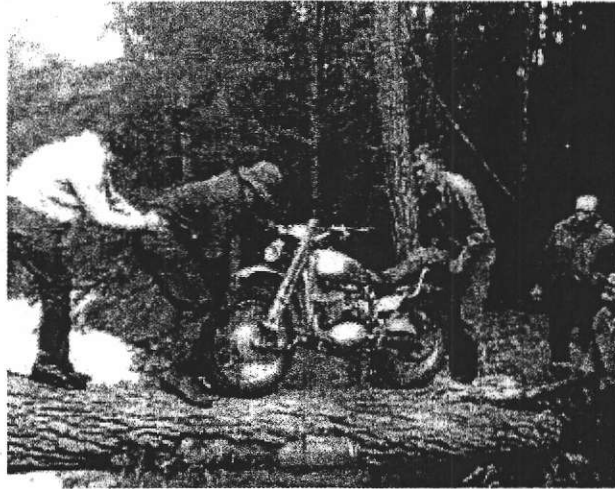
- Incorporated cities and their sphere of influence
- All areas located within a community development foundation
- CVMSHCP Conservation Areas
- National Parks and Forests
- Wilderness areas
- Military lands
- Tribal Reservations

The remaining property was further refined to account for potential reserve design in the Western Riverside MSHCP. Based upon this analysis, the OHV Commission identified seven (7) areas for future consideration.

The OHV Commission has completed its first phase as instructed by the Board of Supervisors. The Commission has performed these duties within its original time constraint and recommends that a workshop before the Board of Supervisors be scheduled so that appropriate next steps can be discussed.

From the first time that someone took their Model A out across the hills behind the barn, off-highway vehicles have been used for recreational purposes. Whether it is the challenge of conquering natural obstacles or the pure enjoyment of the outdoors, OHV recreation has continued to increase even as permitted areas have disappeared.

In 1972, Executive Order 11644 was signed allowing federal agencies to identify "specific areas on public lands where use of off-road vehicles may be permitted and areas in which the use of off-road vehicles may not be permitted..." In 1977, Executive Order 11644 was amended by Executive Order 11989 that further defined public lands and allowed a provision to prevent the use of certain public lands if use by off-road vehicles would result in



substantial or permanent damage. While most federal agencies chose to identify specific areas where OHV uses would be prohibited and classified all remaining land as "open", this decision set the stage for the uncontrolled use of private and public lands that we have today.

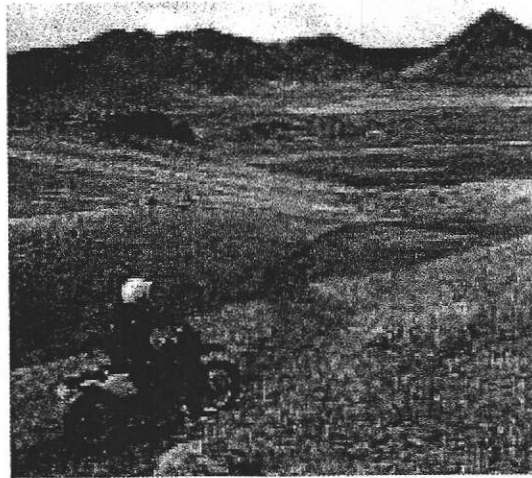
OHV recreational activities have become an increasingly popular form of family recreation in Southern California. Since 1980 the amount of green sticker (ATV, dirt bike and non street legal 4 x4's) registrations has increased 370%. At the same time, the Bureau of Land Management (BLM) notes that the amount of land available for OHV recreational use has declined 48 percent in our desert areas. The decline in available land is a direct result of designating areas for conservation and the protection of endangered species as well as increasing the size of wilderness areas.

Over the years, many residents felt that they could ride not only on their own property, but also on all unoccupied land that was available in this county. As a result of unprecedented growth in Riverside County, residents are becoming more vocal in their opposition to OHV riding in areas adjacent to residential development, conservation areas, or on undeveloped properties.

OHV issues have hit the front page of newspapers and have become a continuing concern for all levels of government. Violations of private property rights have increased as OHV riders try to find areas in which to ride. As new housing developments continue to develop, new residents will continue to complain about dust, noise and trespassing, less open land and stricter enforcement of laws dealing with OHV use. However, off-highway vehicle recreation is a valid form of recreation enjoyed by a large segment of the

County's population and OHV enthusiasts should be provide with a safe and legal place to ride the almost 100,000 green sticker vehicles licensed within Riverside County.

Ongoing trespassing on private or public lands not designated for OHV use is a definite indicator of current needs. Since October 2004, Riverside County has been struggling with the establishment of regulations for the use of OHV's on private property. Proposed regulations have been in response to long-standing complaints by residents of ongoing trespass onto private property, excessive dust, noise and other various nuisances. It is common to experience an increase in illegal riding if there are no legal places in which to ride within a reasonable distance of the individual's home.

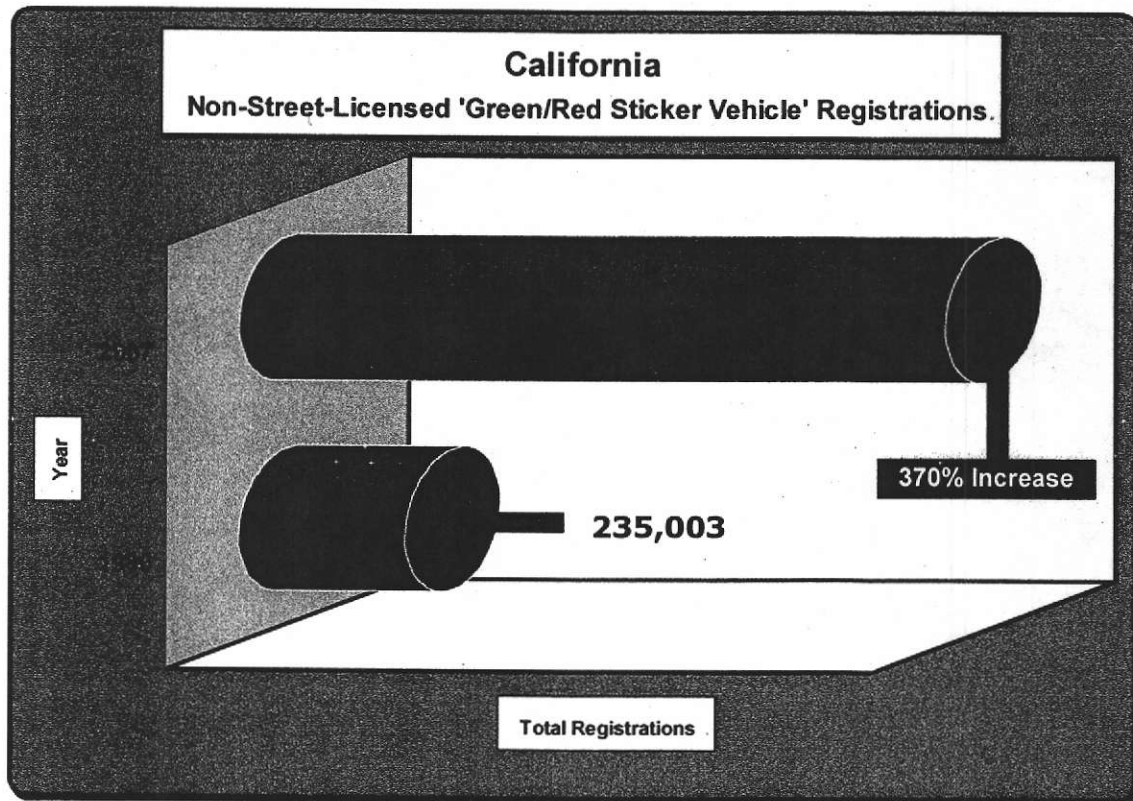


Recently the State of California proposed a State OHV Park in LaBorde Canyon, an area south of the City of Beaumont. As a result of increasing challenges, including environmental and legal issues that resulted in the abandonment of the proposed park, Riverside County had to seek alternate sites to provide off-highway vehicle recreational opportunities.

On March 21, 2006, the Riverside County Board of Supervisors established a five member Off-Highway Vehicle Commission. The Commission's purpose is to advise and make recommendations to the Board of Supervisors concerning (1) the identification of several candidate sites for use as off-highway vehicle parks, (2) input on related site acquisition issues, (3) the extent and range of use for candidate sites, and (4) the provision of advice to county staff and decision-makers regarding public outreach for educational and informational purposes.

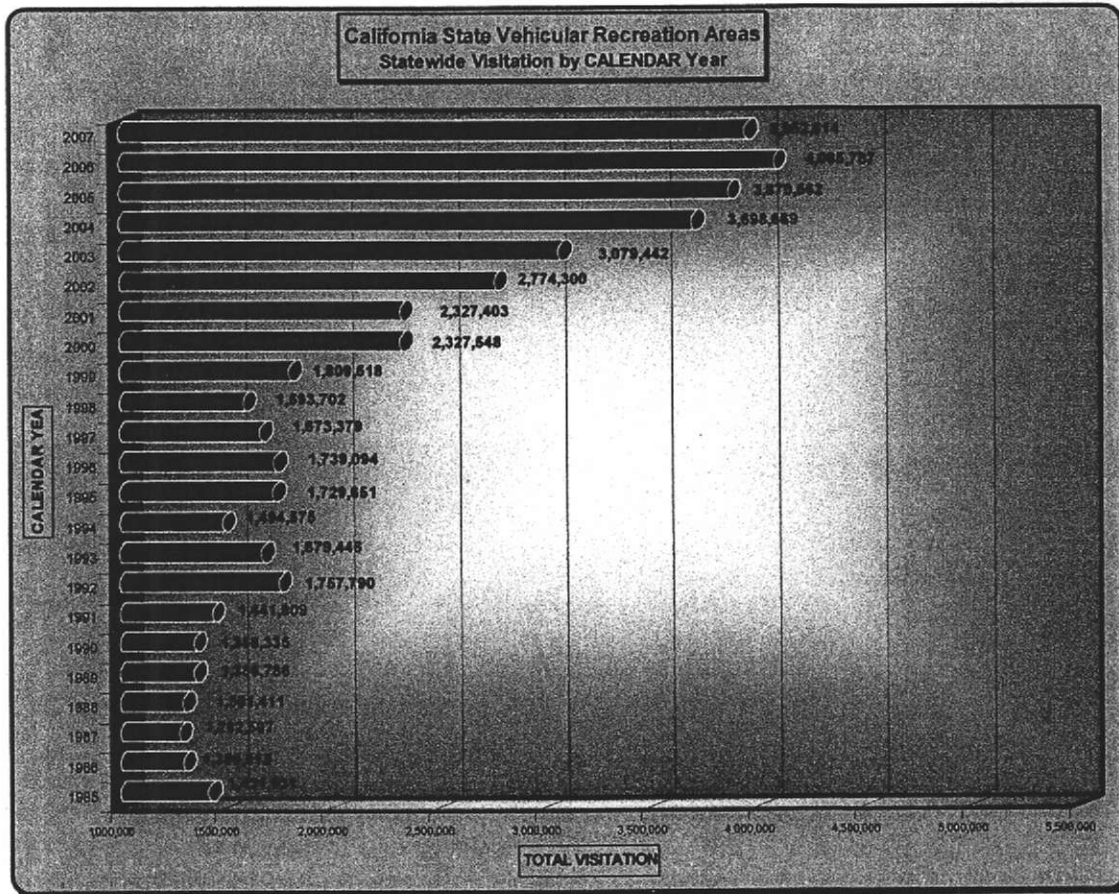
Missed Opportunities and Lost Revenue

In order to fully understand the impacts of not having a legal area for OHV riding in Riverside County, an understanding is needed regarding the increase in ridership over the past several decades and the method that is now used by the State of California to return to the Counties revenue based upon State fees. In 1980, California had 235,300 non-street licensed green/red sticker vehicles registered in the State. By 2007, this number had increased to 1.1 million registrations, more than a 370 percent increase. The recreational utility vehicle market is one of the fastest growing segments with an increase of 273% in three years. The average cost of a vehicle is \$9,000.00. Additionally, in the three months after the initial purchase, an additional \$1,200.00 is spent on accessory features.



In the past, for every one (1) registered vehicle, there were six (6) that were unregistered. Since the institution of the sticker program, it is now approximately a one-to-one ratio, according to the California Off-Highway Motor Vehicular Recreation Commission. Riverside County accounts for 96,034 registrations, 8.7 percent of the total State registrations, and is ranked third in the State behind Los Angeles County and San Diego County. In contrast, San Bernardino County had 89,785 registrations and is ranked fourth; Orange County is fifth with 71,084

registrations. The largest concentration of registrations in Riverside County is in the Murrieta/Temecula area.

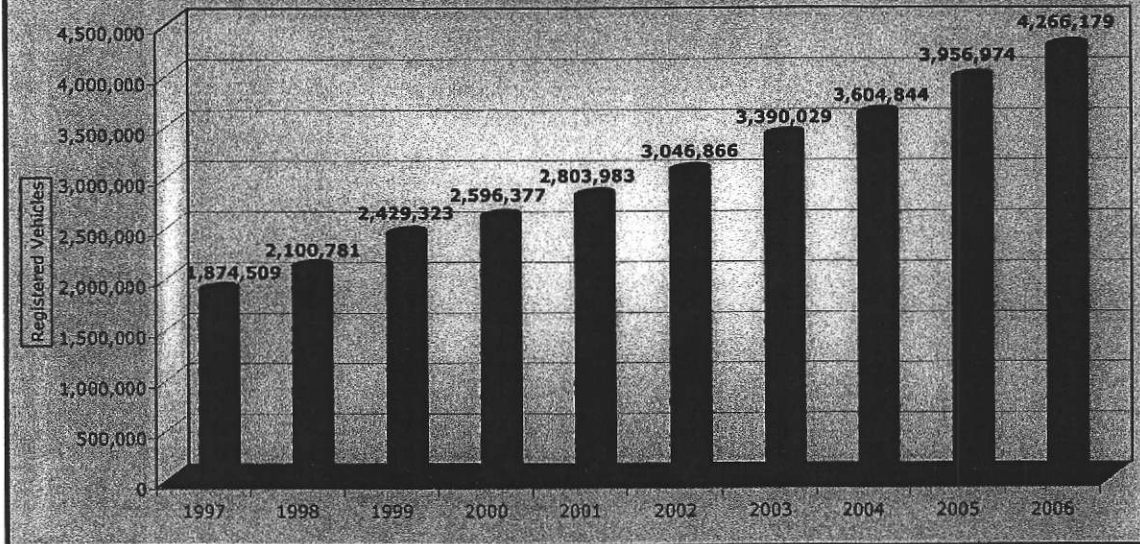


Use of State OHV Parks has similarly increased over the years. In 1985, State facilities were visited 1.4 million times. By 2007, visitation had increased to approximately 4 million, a 180 percent increase.

While OHV activities had been limited to non-street legal vehicles in the past, with the introduction of the sports utility vehicle (SUV), significant increases in off-roading were realized. In 1989, 194,403 street-licensed 4-wheel drive vehicles were licensed in California; by 2006 this number had climbed 2,095 percent to 4,266,179 vehicles. This trend may decline due to current gasoline prices; however, continued use of off-highway areas will continue to increase as more people pursue this form of recreation.

Street-Licensed Four-Wheel Drive Registration Population

Source: The California Energy Commission
- 128 % Increase In 10 Years -



In the past, revenue generated by the green/red sticker program was distributed based upon the location of the registered vehicle. If a person lived in Riverside County and had registered their OHV in the County, funds were received based upon that registration. In 2006, the rules were changed. Currently, the distribution of funds is based upon where a person rides. Since Riverside County has limited areas designated for OHV use, minimal funds are generated. These funds have been used primarily by the Recreational Off-highway Vehicle Enforcement (ROVE) unit of the Sheriff Department.

State Revenue Generated by OHV Riding

There are currently 1,028,583 Off-Highway Vehicles registered with California. These vehicles use approximately 20 million gallon of fuel per year and generate approximately \$971,320 in tax revenue that is returned to the Counties based upon the location that an OHV rider uses for recreational purposes.

As noted above, Riverside County is ranked number 3 in the State for the number of registered off-highway vehicles; however, Riverside County is ranked seventh in the amount of funding received due to limited areas within the County where OHV's can ride legally. The following table documents the various Counties in Southern California; the number of registered OHV vehicles; and the amount of funds received from the State. Riverside County, due to limited riding areas, received \$46,389.82. San Bernardino County, which is fourth in the State

for registered OHV's, received \$141,876.42, over three times more funds for 6,249 fewer registered vehicles. Imperial County, which ranks 25th in the number of registered OHV's, ranks first in the amount of funds received due to large OHV riding areas.

COUNTY	Registered OHV Vehicles	Rank by Number of Vehicles Registered	State Funds Received from OHV Riding	Rank by Amount of OHV Ridership*
Imperial	8,955	25	\$242,578.57	1
Kern	34,885	6	\$63,380.75	5
Los Angeles	146,077	1	\$64,280.51	4
Orange	7,1084	5	\$5,819.84	23
Riverside	96,034	3	\$46,389.82	7
San Bernardino	89,785	4	\$141,876.42	2
San Diego	101,761	2	\$25,115.04	11
San Luis Obispo	13,881	20	\$71,632.73	3
Santa Barbara	10,140	23	\$279.67	40
Ventura	30,123	8	\$33,294.52	8

Source: Off-Highway Motor Vehicle Recreation Division, California Department of Parks

* Ranking is based upon the amount of use within legal riding areas within the County.

INFORMATION GATHERING

OHV activities may take place on a variety of properties, from as small as a couple of acres to many thousand of acres depending upon the terrain and the activity. The larger and more diverse land forms offer the greatest variety of uses, from small safety training areas to large cross-county trails. Small areas with limited variation in land forms may require significant surface alterations and soil stabilization and may require the addition of walls, earthen berms, or other solid barriers to control riders and sound. Larger complexes usually offer a greater variety of potential uses due to naturally diverse terrain and a reduced need for surface modifications. The larger sites may only require good trail design and construction, and management. Additionally, there is a greater potential for extensive buffer areas that will naturally control noise and other environmental impacts, when the sites are larger.

In order to identify potential OHV areas in Riverside County, a systematic approach was used to identify areas that could not be used. The Commission started by interviewing various local, state and federal agencies which currently have an interest in OHV uses. Interviews were held with the following people. A brief discussion of their comments can be found in Appendix D:

- Dana Bell, National Off-Highway Vehicle Conservation Council
- Mona Daniels, Bureau of Land Management (BLM)
- John Ladley, San Bernardino National Forest, San Jacinto Ranger District
- Daphne C. Greene, California Off-Highway Motor Vehicular Recreation Commission
- Katie Barrows, Director of Environmental Resources, Coachella Valley Association of Governments (CVAG)
- Ken Graff, Regional Conservation Agency
- Deputy Penning/Deputy Bartlett, Riverside County Sheriff's Department, OHV Division
- Paul Frandsen, Riverside County Regional Parks & Open-Space District
- David Jones, County Geologist, Riverside County Planning Department

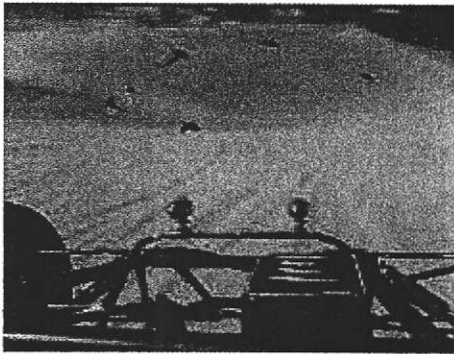
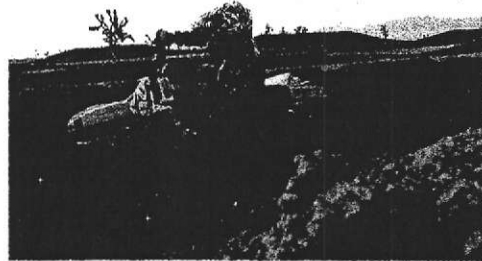
TYPES OF OHV ACTIVITIES



OHV activities encompass a large and diverse range of recreational opportunities. An individual may choose to participate in one activity at one time and a completely different activity at another. Riders may also participate in multiple activities during the same outing. Some of these activities may include:

Motocross Tracks – Practice & Competition

This is a race that is held on a tight, turning, one-way course with a variety of natural terrain, man-made obstacles, or jumps. These events are usually head-to-head races where the fastest rider wins. When the tracks are not being used for actual races they can be used for practice by either competitors or by other riders wishing to improve their skills.



Open Areas

Large open areas that are unmarked, such as sand dunes, gravel pits, and other sites, lend themselves to open cross-country riding. These areas are enjoyed by a sizeable number of the OHV population



Recreational Trail Riding

This activity tends to be the most desired by OHV users and is best served by a series of interconnected loop trails that may consist of 50 to 100 miles or more of trail dispersed over the landscape or as small as 10 to 30 miles in length, depending upon the size of the property and the variety of the landscape.



Obstacle Courses

An OHV obstacle course will usually be a small area of natural or man-made features to test and enhance the participant's skills. Obstacles can be designed to replicate features that would be encountered on trails, or they may simply be features that focus on specific riding skills. These areas may also include features such as logjams, rock piles, or tire pits.

Hill Climbs – Practice & Competition

Hill climbs are a challenge and competition enjoyed by a small segment of the motorized recreation population. Challengers start at the bottom of a long, steep hill and try to reach the top of the hill without crashing.



TYPES OF VEHICLES

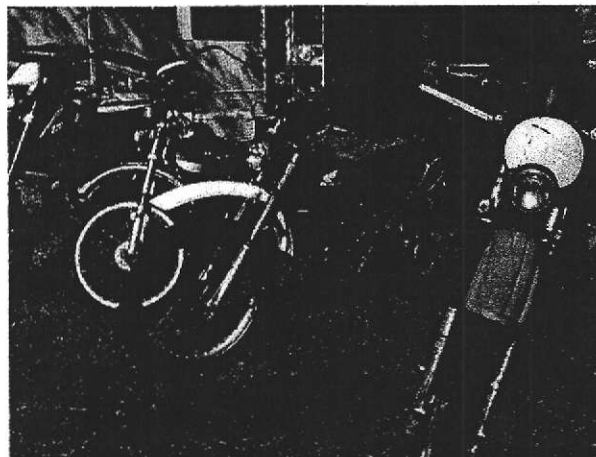
Dual-Sport Motorcycle - A dual-sport motorcycle compromises the light weight and off-road capabilities of the typical dirt bike in order to offer a safer, more comfortable ride on the road and comply with regulations that affect street motor vehicles. Thus Dual-sports have all necessary components for street homologation such as turn signals, speedometer, mirrors, as well as safety, comfort and convenience components which may include a anti-lock braking system, luggage, more comfortable seats, auxiliary lighting, and other optional items.



Thus Dual-sports have all necessary components for street homologation such as turn signals, speedometer, mirrors, as well as safety, comfort and convenience components which may include a anti-lock braking system, luggage, more comfortable seats, auxiliary lighting, and other optional items.

A dual-sport is often conceptualized as a street-evolved dirt machine, although recently several manufacturers, especially those who usually do not compete in the dirt-bike market, have followed an opposite trend. The off-road heritage of these bikes is reflected most prominently in its suspension, which offers more travel than a street bike. Other features common to off-road bikes, such as handguards and wheel covers (mudcovers) usually appear in these models.

Enduro Motorcycle - An Enduro motorcycle is a motorcycle specially made for the Enduro sport, with the long travel and medium-hard suspension of a motocross bike conjoined with features such as a headlight and quiet muffler to make the bike street-legal for parts of the track. The engine of an enduro bike is usually a single cylinder 2-stroke between 125cc and 300cc, or 4-stroke between 250 and 650cc.



The motorcycle is usually equipped with headlight for on road and after dark use, brake light/tail light for on road use, protective hardware like handguards for hand protection against branches and leaves, skid plate to protect the bottom of

bike/motor against mud, logs, etc., disk brake rotator protectors to help keep mud off the disk and from between the pads and prevent it sticking to the pads, and an exhaust system that is street legal and meets regulations for noise and spark arresting

Motocross Motorcycle - Off-highway motorcycle built for use in closed-course motocross events – also used for off-highway competition and recreational trail riding when modified to meet State and Federal regulations pertaining to registration, sound levels, and spark arresters – may not comply with emission standards.



Trials Motorcycle - Off-highway motorcycle built for competition, exhibition, and practice riding over extremely technical natural terrain and constructed obstacle courses.

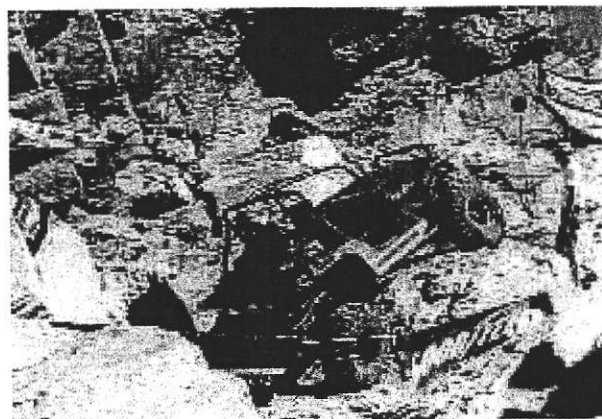


Sport ATVs are used for recreational trail riding, touring, and competitive events.

Utility ATVs are used for farm, ranch, and trail maintenance work as well as an access and hauling vehicle for hunting and fishing. It may also be used for trail riding and occasionally for organized events.

Long Wheel Base Vehicles are used on streets, back roads, and trails for touring, casual trail riding, and organized events which may or may not be legal for street use.

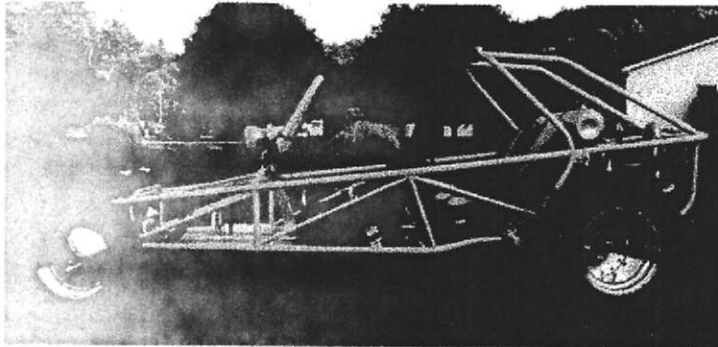
Short Wheel Base Vehicles are used on streets, back roads, and technical trails with the ability to perform tight radius turns for touring, casual trail riding and organized events. These vehicles may or may not be legal for street use.



Rock Crawler are generally a custom-built machine designed to travel over extremely technical,

natural, or man-made terrain and constructed obstacle courses and are usually not equipped to meet street requirements.

Utility Type Vehicle (UTV) is designed for two or more passengers sitting side by side. It may be used for farm, ranch, and trail maintenance work as well as an access and hauling vehicle for hunting and fishing.



Dune Buggy/Sand Rail are manufactured and custom-built vehicles used for recreational riding and competitive events over sand, sand dunes, and other open terrain and are usually not equipped to meet street requirements.

Past OHV Park Experience

The DeAnza Cycle Park with the adjacent buffer areas was originally started in 1980. The Cycle Park was part of a larger land assemblage owned by the Waste Management Department, which contained approximately 3,000 acres. The original purpose for the site was for waste management (land fill); however once the site was no longer needed for waste management purposes, it was sealed and capped and reverted to the Parks Department.

The original land assemblage of 3,000 acres was acquired using both OHV funds from the State and land exchanged with the Bureau of Land Management (BLM). Approximately 1,000 acres were originally owned by BLM and 2,000 acres were funded by State OHV funds. The original OHV facility encompassed 400 acres with casual riding tracks, hill climbs, competitive tracks, trails, and sand rail tracks. The park tried to provide riding opportunities for every segment of the community. The portion operated by the contractor who ran the DeAnza OHV Park was approximately 200 acres of which only 60 acres was actually used for OHV purposes.

Over the years, there were several attempts to expand the riding opportunities; however, each attempt was met with obstacles. These obstacles included the need for an interchange on the 60 Freeway at Gilman Springs Road, increasing numbers of residents living near the site in Beaumont, and insurance issues with the concessionaire which became a greater issue when the original operator vacated the site.

There were four (4) grants issued to Riverside County over the period of the DeAnza project. The first two grants were issued in the late 1970s and were used as seed money to find other funds. A grant was received in the amount of \$6.3 million dollars so that Riverside County could develop a state OHV facility in the

late 1970s. Due to the size of the grant awarded to Riverside County, legislation was required that dictated how the money was to be used: acquisition, environmental documentation, planning and construction. The grant was used to reimburse funds that the County expended on OHV park development. To date, approximately \$3.8 million has been drawn down.

In 1988, an attempt was made to salvage the OHV park. A consultant was hired to review the project. There were a number of issues that required resolution, including the following:

- the soil in the area was not conducive to heavy traffic due to dust and landslide potentials;
- access issues were raised by Riverside County Fire due to a single point of ingress and egress;
- the property was still under the ownership of the Waste Management Department; and
- \$3.8 million had already been spent on acquisition.

Two complete CEQA processes were required as well as a master plan completed, but ultimately a permanent OHV park was never realized. As more and more people started to move into the surrounding areas of Beaumont, Calimesa and the County, increased environmental concerns were raised which ultimately lead to the site being abandoned for OHV use.

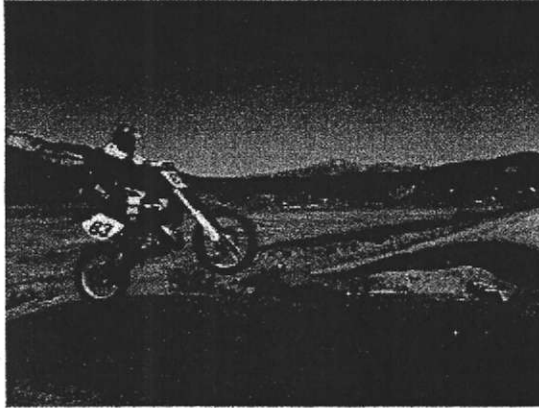
CURRENT MOTOCROSS TRACKS IN RIVERSIDE COUNTY

There are currently four private motocross tracks in operation within Riverside County:

Lake Elsinore MX Park is located in the City of Lake Elsinore at 31919 Cereal Street, Lake Elsinore, CA. Lake Elsinore MX Park has 5 tracks to choose from, offering the perfect ride for every level rider. All tracks can hold numerous riders since they are fairly large. The Vet track is perfect for experienced and beginner adult riders, offering professionally groomed tabletops, doubles, rollers, some good sand sections, and other



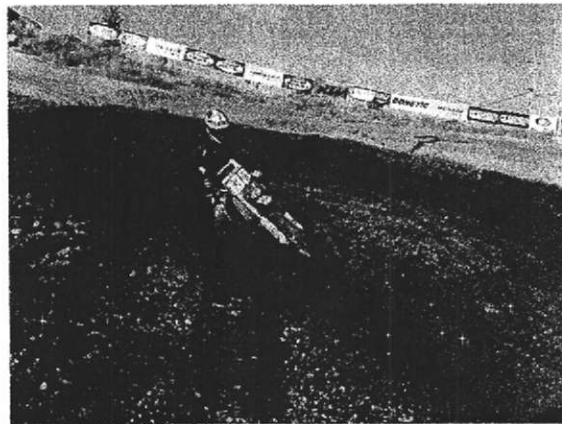
obstacles. The Main track is set up for Novice to Pro riders, consisting of 100' table tops, 120' Step Ups, Rhythm sections, Triples, Quads and Whoops. Each November the Lake Elsinore Grand Prix is held in and around the city. The grand finale of the two days of racing is called the Harvey Mushman 100, named after the actor, Steve McQueen, who entered the race under the name of Harvey Mushman in the 1970's. This race was documented in the famous film, On Any Sunday.



Cahuilla Creek MX Park is a private motocross track owned by the Cahuilla Band of Cahuilla Indians, located near Anza, CA, approximately 27 miles east of I-15 on Highway 371. There are 4 tracks at Cahuilla Creek of moderate skill levels. These tracks are all similar in that they are older-style motocross tracks. The main track has good elevation changes giving acceptable jumps, but no huge doubles. Tabletops and stepdowns are the most serious

jumps at this location. The main track does change elevation frequently, with plenty of turns. The Main tracks are watered throughout the day.

Perris Raceway, located at 1205 Burton Road, Perris, CA. the oldest motorcycle race track in California was recently been acquired by Rick Johnson and Sebastian Tortelli who are both former factory racers, having won multiple World and AMA Motocross and Supercross Championships. A full and complete renovation is planned, to bring the facility up to world-caliber standing. These plans include new infrastructure, three race tracks, hospitality & lodging facilities, offices, and more. Multiple series and races will be held at the facility as always, and the new Champ Factory MX School will operate at Perris as well.



Starwest Motocross Park is located at the Perris Fairgrounds at 18700 Lake Perris Drive off of the Ramona Expressway. The main track offers a challenging layout for all level of riders. There are obstacles consisting of doubles, table tops, whoops, and rhythm sections. The pee wee Track is very user friendly for beginners. It has a layout consisting of small jumps for all kids to practice on until they are confident enough to move up to the Main Track. Races on this track have beginner and novice level riders on 50cc and 65cc two-strokes, and four-strokes up to 110cc.



SITE SELECTION CRITERIA

In an effort to define areas of the County where OHV activity may be appropriate, maps were created that eliminated the following areas from consideration:

- Incorporated cities and their sphere of influence
- All areas located within a community development foundation of the Riverside County General Plan
- CVMSHCP Conservation Areas
- National Parks and Forests
- Wilderness areas
- Military lands
- Tribal Reservations

The property remaining after the above areas were removed, were further refined by using the criteria within the Western Riverside MSHCP to eliminate areas that are proposed for future reserve design. The Commission felt that certain reserve areas were possible even though they contained significant biological resources, due to their location or buffering capabilities. The Commission felt that trail riding within biologically sensitive areas could co-exist if properly managed. These areas have been included in the properties that are suggested for further review, even though they will probably be excluded once the impacts are determined. Additional areas of interest were current or past mining projects that are either entering their reclamation phase or were currently within reclamation.

Once all the above constraint areas were removed from consideration, the Commission then looked at the areas remaining to focus upon larger parcels or areas that could be combined with certain publicly owned properties to create areas that could be properly buffered and that would provide varying riding experiences.

The final filtering process was a review of various ordinances, either in place or proposed that might further eliminate areas from consideration. Areas under consideration in H.R. 3682/ S. 2109 – California Desert and Mountain Heritage Act, were eliminated from consideration, as were areas that had multiple owners that would be difficult to acquire.

The Commission developed a list of seven (7) areas of consideration that should be more fully explored in the next phase. Each area contained multiple resources that would enhance the OHV riding experience. The criteria that the Commission felt were necessary for an enhance experience are as follows:

- Property ownership – Consideration was given to properties that are currently owned by the County or owned by a State or Federal agency that could be included in the final park design.

- Size of Proposed Park – Larger areas that had substantial buffer areas were considered more desirable.
- Type of Park – The ability to develop multiple types of riding areas is more desirable than a single purpose riding experience.
- Current Amenities – Current facilities within the area were considered
- Type of Terrain/Elevation Change – The ability to have multiple types of terrain and areas that had significant elevation changes were felt to be more desirable so that varying riding experiences would be possible within the same park area.
- Water Course/Natural amenities – Areas containing natural features which would enhance the OHV experience were more desirable.
- Access to the Area – It is important to have convenient access to the area that is adjacent to major roadways within the County. Two means of access is necessary for safety reasons.
- Closest Residential Areas – Due to the potential for future conflicts, areas that were remote from existing or future residential areas had greater desirability than sites close to residential areas.

Based upon these criteria, seven sites were suggested for further study. While the Commission realized that issues would arise that would result in the elimination of one or more suggested sites, each site met multiple criteria and further study is recommended. It was the charge of the Board of Supervisors to identify several candidate sites for further analysis. The Commission realizes that only one or two of the candidate sites will ultimately be proposed for OHV uses; however, the Commission felt it was important to review all sites and to determine which would meet the most criteria for an ultimate OHV park.

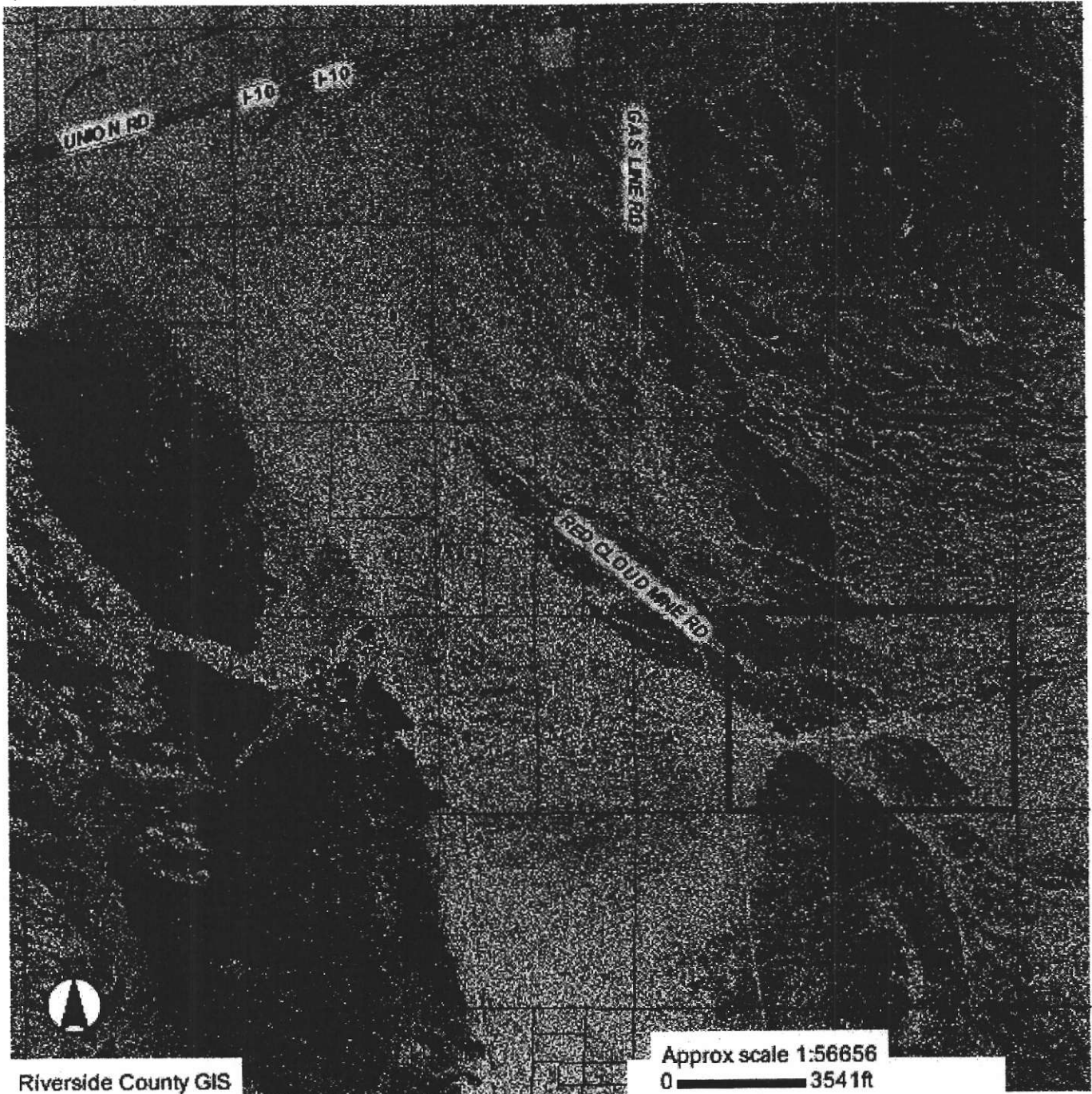
The following seven (7) sites meet multiple criteria and are suggested for further study:

- Red Cloud Mine Road (4th District)
- Drop 31 All American Canal (4th District)
- Badlands/Jack Rabbit Trail (5th District)
- Juniper Flats Road (5th District)
- Diamond Valley Lake/Lake Skinner (3rd District)
- Prado Mine Site (2nd District)
- Temescal Canyon/ Corona Clay (1st District)

An analysis of each site follows.

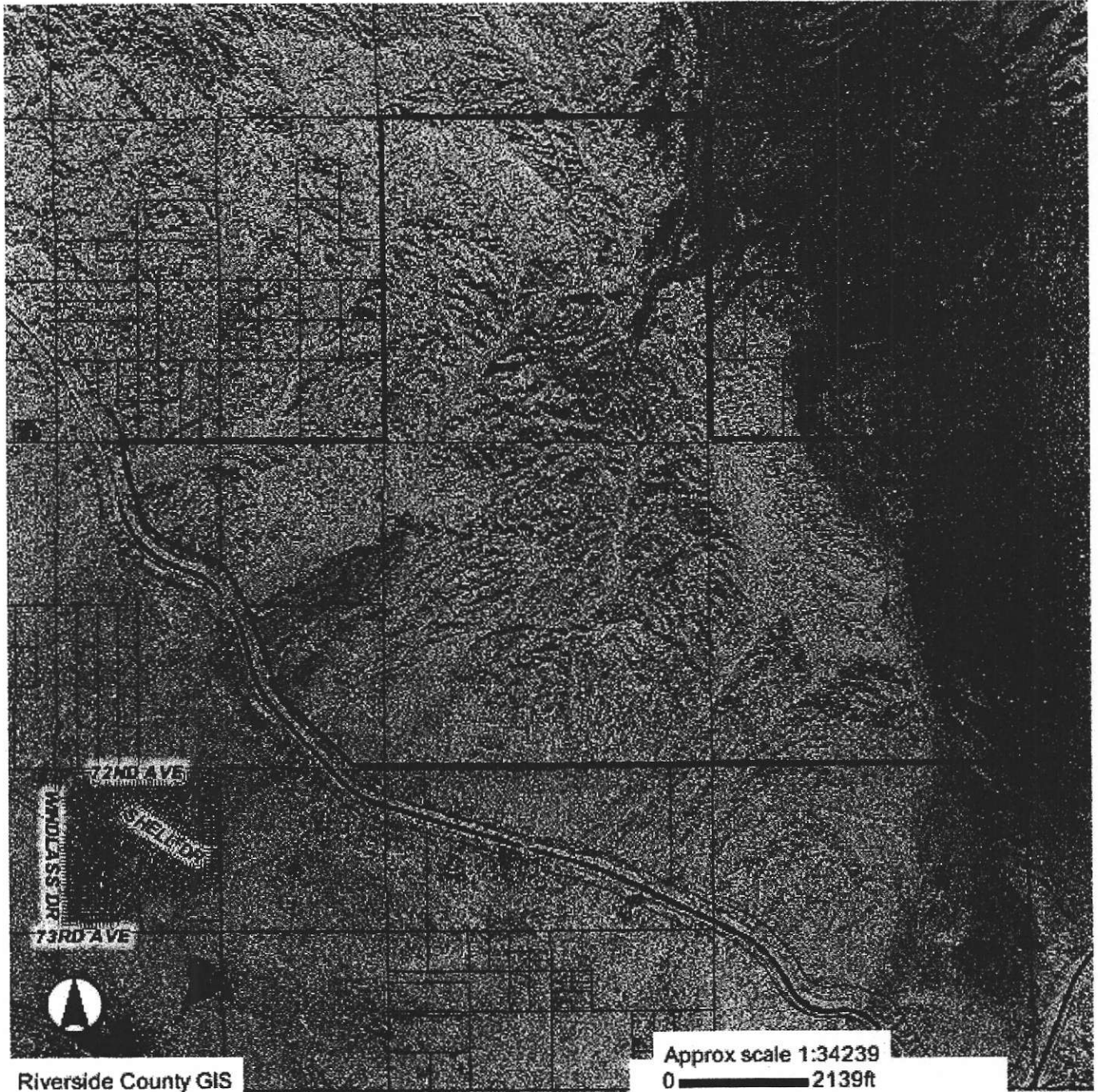
NAME OF PARK	Red Cloud Mine Road
OWNER	Bureau of Land Management
ASSESSOR'S PARCEL NUMBER(S)	811-090-023
SUPERVISORIAL DISTRICT	Fourth
SIZE OF PROPOSED PARK (acres)	600 acres
TYPE OF PARK	<input checked="" type="checkbox"/> Motorcycles <input checked="" type="checkbox"/> ATV <input checked="" type="checkbox"/> Hill Climb <input type="checkbox"/> Motocross Track <input type="checkbox"/> Motorcycle Trials <input checked="" type="checkbox"/> Trail Riding <input checked="" type="checkbox"/> Improved Camping <input checked="" type="checkbox"/> Unimproved Camping <input checked="" type="checkbox"/> Safety Training
CURRENT AMENITIES	old movie set, access to the Bradshaw Trail, desert solitude, desert camping, easy RV access
PENDING ENTITLEMENTS	None
CURRENT ZONING	N-A
GENERAL PLAN DESIGNATION	OS-RUR
AGRICULTURAL PRESERVE	No
ELEVATION CHANGE	1800 – 1860 msl
CONSERVATION CRITERIA	Not in CVMSHCP, no conservation requirement
PROTECTED SPECIES	None
WATER COURSE	Ephemeral drainages off mountains
TYPE OF TERRAIN	desert floor, some hills
ACCESS TO AREA	Red Cloud Mine Road off I-10
CAMPING AVAILABLE	Yes
HIGH FIRE AREA	No
FAULTS	Not within ½ mile of known fault
MT. PALOMAR ORD. 655	Not applicable, 80.88 miles
BUFFER AREAS	significant buffering by BLM lands
CLOSEST RESIDENTIAL AREAS	greater than 10 miles away
CODE VIOLATIONS	None
ISSUES OF CONCERN	distance from populated area, very remote

RED CLOUD MINE ROAD



NAME OF PARK	Drop 31 – All American Canal
OWNER	Bureau of Land Management, Sultan Land Development
ASSESSOR'S PARCEL NUMBER(S)	719-030-014, 721-300-050, 723-200-003, 723-200-017, 723-200-018, 723-200-022
SUPERVISORIAL DISTRICT	Fourth
SIZE OF PROPOSED PARK (acres)	2,200 acres
TYPE OF PARK	<ul style="list-style-type: none"> ■ Motorcycles ■ ATV ■ Rock Crawling <input type="checkbox"/> Motocross Track <input type="checkbox"/> Motorcycle Trials ■ Trail Riding ■ Improved Camping ■ Unimproved Camping ■ Safety Training
CURRENT AMENITIES	Access to BLM trails, RV access, Bradshaw Trail to the south of this site.
PENDING ENTITLEMENTS	None
CURRENT ZONING	N-A, W-2-10
GENERAL PLAN DESIGNATION	OS-RUR
AGRICULTURAL PRESERVE	No
ELEVATION CHANGE	210 – 591 feet
CONSERVATION CRITERIA	Not in CVMSHCP
PROTECTED SPECIES	None
WATER COURSE	
TYPE OF TERRAIN	desert canyons, steep ravines, hills
ACCESS TO AREA	Access to area from 72 nd Ave in North Shore, along Coachella Canal with crossing at Drop 31
CAMPING AVAILABLE	Yes
HIGH FIRE AREA	No
FAULTS	within ½ mile of the following faults: Hidden Springs Fault, Painted Canyon Fault, San Andreas Fault, Sheephole Fault
MT. PALOMAR ORD. 655	Not applicable, 55.91 miles
BUFFER AREAS	BLM and Mecca Hills Wilderness area to the north, BLM to the east, All American Canal to the west and
CLOSEST RESIDENTIAL AREAS	½ mile to the southwest
CODE VIOLATIONS	None
ISSUES OF CONCERN	Access will require new road to accommodate traffic

DROP 31 - ALL AMERICAN CANAL



Riverside County GIS

Approx scale 1:34239

0 2139ft

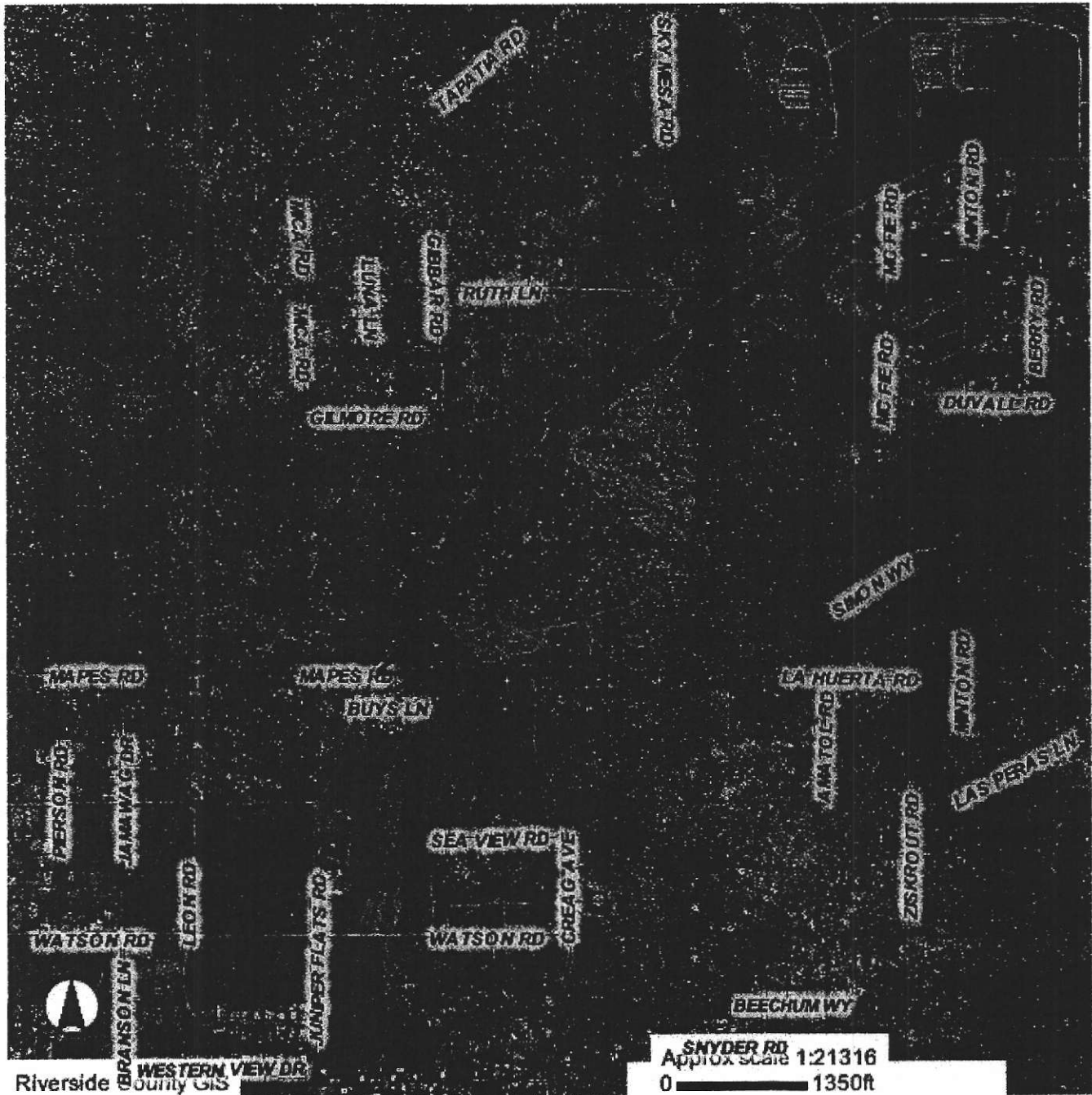
NAME OF PARK	Badlands – Jack Rabbit Trail
OWNER	Bureau of Land Management, Mission Viejo Company, Beaumont 400, William Driscoll
ASSESOR'S PARCEL NUMBER(S)	422-050-022, 422-050-024, 422-050-026, 422-060-002, 422-060-005, 422-060-009, 422-060-010, 422-060-016, 422-060-017, 422-060-021, 422-060-022, 422-060-025, 422-060-026, 422-06-0027, 422-060-028, 422-170-005, 422-170-008, 422-250-001, 422-250-002, 422-250-003, 422-250-004, 422-250-005, 422-250-006, 422-250-007, 422-250-008, 422-250-009, 422-250-010,
SUPERVISORIAL DISTRICT	Fifth
SIZE OF PROPOSED PARK (acres)	Up to 2,600 acres
TYPE OF PARK	<ul style="list-style-type: none"> ■ Motorcycles ■ ATV ■ Rock Crawling ■ Motocross Track ■ Motorcycle Trials ■ Trail Riding ■ Improved Camping ■ Unimproved Camping ■ Safety Training
CURRENT AMENITIES	some trails already on property, good topography
PENDING ENTITLEMENTS	CUP02763 - never submitted complete application, CUP01290 - expired 10/12/1971
CURRENT ZONING	W-2-10, W-2-20
GENERAL PLAN DESIGNATION	RM, OS-RUR, OS-CH, EDR-RC
AGRICULTURAL PRESERVE	No
ELEVATION CHANGE	1962 - 2530 feet
CONSERVATION CRITERIA	Conservation called for on southern portion of site; however, RCA is looking west and south of the site for optimal conservation
PROTECTED SPECIES	Burrowing Owl
WATER COURSE	Several water courses on site, subject to flash foods in canyons
TYPE OF TERRAIN	semi-arid hills and canyons
ACCESS TO AREA	Access from Jack Rabbit Train and SR 60
CAMPING AVAILABLE	No
HIGH FIRE AREA	Yes
FAULTS	within 1/2 mile of the following faults: Claremont Fault, San Jacinto Fault, unnamed County faults
MT. PALOMAR ORD. 655	Zone B 39.94 miles
BUFFER AREAS	significant buffers in all directions, SR 60 borders northern boundary
CLOSEST RESIDENTIAL AREAS	over 1 mile away
CODE VIOLATIONS	None
ISSUES OF CONCERN	Property subject to high flood hazard area, may have CalTrans issues with access from SR 60

BADLANDS/JACK RABBIT TRAIL



NAME OF PARK	Juniper Flats Road
OWNER	CEMEX USA Land Company
ASSESSOR'S PARCEL NUMBER(S)	457-030-005, 457-030-006
SUPERVISORIAL DISTRICT	Fifth
SIZE OF PROPOSED PARK (acres)	78 acres
TYPE OF PARK	<input checked="" type="checkbox"/> Motorcycles <input checked="" type="checkbox"/> ATV <input checked="" type="checkbox"/> Rock Crawling <input checked="" type="checkbox"/> Motocross Track <input checked="" type="checkbox"/> Motorcycle Trials <input type="checkbox"/> Trail Riding <input type="checkbox"/> Improved Camping <input type="checkbox"/> Unimproved Camping <input checked="" type="checkbox"/> Safety Training
CURRENT AMENITIES	Old mine site
PENDING ENTITLEMENTS	RCL00124 - Reclamation on mine
CURRENT ZONING	M-R
GENERAL PLAN DESIGNATION	OS-MIN
AGRICULTURAL PRESERVE	No
ELEVATION CHANGE	1804 - 2054 feet
CONSERVATION CRITERIA	Not in a MSHCP Cell
PROTECTED SPECIES	Burrowing Owl
WATER COURSE	Blue line stream on southern portion of the site
TYPE OF TERRAIN	Old mine site, bowl shaped area with steep hillsides
ACCESS TO AREA	Juniper Flats Road north of SR 74
CAMPING AVAILABLE	No
HIGH FIRE AREA	Yes
FAULTS	None
MT. PALOMAR ORD. 655	Zone B - 30.89 miles
BUFFER AREAS	limited buffering, Riverside County mine site to the immediate north
CLOSEST RESIDENTIAL AREAS	housing to the south and farther north on the northern side of the Riverside County mine
CODE VIOLATIONS	None
ISSUES OF CONCERN	proximity of housing to the site

JUNIPER FLATS ROAD



Riverside

Western View Dr
County GIS

SNYDER RD
Approx scale 1:21316
0 1350ft

NAME OF PARK	Diamond Valley/Lake Skinner
OWNER	Metropolitan Water District
ASSESSOR'S PARCEL NUMBER(S)	466-200-003, 469-150-001, 469-150-006, 469-150-007, 469-150-008, 470-020-044, 470-020-056, 470-020-057, 470-020-058, 470-020-059, 470-130-006, 470-130-008, 470-130-009, 470-130-010, 470-130-011, 470-130-012, 470-130-013, 470-130-014, 470-130-015, 470-130-039, 470-150-007, 470-150-014, 470-150-015, 470-150-017, 470-150-019, 470-150-021, 470-150-023, 470-150-024, 470-150-025, 470-150-026, 470-150-027, 470-150-028, 470-150-029, 470-150-030, 470-150-031, 470-160-001, 470-160-002, 472-230-002, 915-020-001, 964-040-004, 964-040-005
SUPERVISORIAL DISTRICT	Third
SIZE OF PROPOSED PARK (acres)	up to 3000 acres
TYPE OF PARK	<ul style="list-style-type: none"> <input checked="" type="checkbox"/> Motorcycles <input checked="" type="checkbox"/> ATV <input type="checkbox"/> Rock Crawling <input type="checkbox"/> Motocross Track <input type="checkbox"/> Motorcycle Trials <input checked="" type="checkbox"/> Trail Riding <input checked="" type="checkbox"/> Improved Camping <input checked="" type="checkbox"/> Unimproved Camping <input checked="" type="checkbox"/> Safety Training
PARK AMENITIES	Recreational areas around Lake Skinner, areas are planned around Diamond Valley Lake.
PENDING ENTITLEMENTS	None
CURRENT ZONING	R-R, A-2-10, A-1-10
GENERAL PLAN DESIGNATION	OS-CH, RM
AGRICULTURAL PRESERVE	Winchester #3
ELEVATION CHANGE	1506 - 2126
CONSERVATION CRITERIA	The majority of the area is outside the Criteria Area Units of the MSHCP; however, most of the property was acquired for mitigation of various MET projects. Any other use would require close examination.
PROTECTED SPECIES	Burrowing Owl
WATER COURSE	Blue line streams cross the property in numerous areas
TYPE OF TERRAIN	rolling hills and mountains
ACCESS TO AREA	SR 79
CAMPING AVAILABLE	Yes
HIGH FIRE AREA	Yes
FAULTS	No
MT. PALOMAR ORD. 655	Zone B 17.45 miles
BUFFER AREAS	significant buffering throughout the area
CLOSEST RESIDENTIAL AREAS	scattered housing within buffering area, residential more than one mile to the west and east
CODE VIOLATIONS	None
ISSUES OF CONCERN	Significant conservation areas adjoining the trail area, land owned by the Metropolitan Water District. Most of the property was acquired for mitigation of various MET projects. Any other use would require close examination.

DIAMOND VALLEY LAKE/LAKE SKINNER

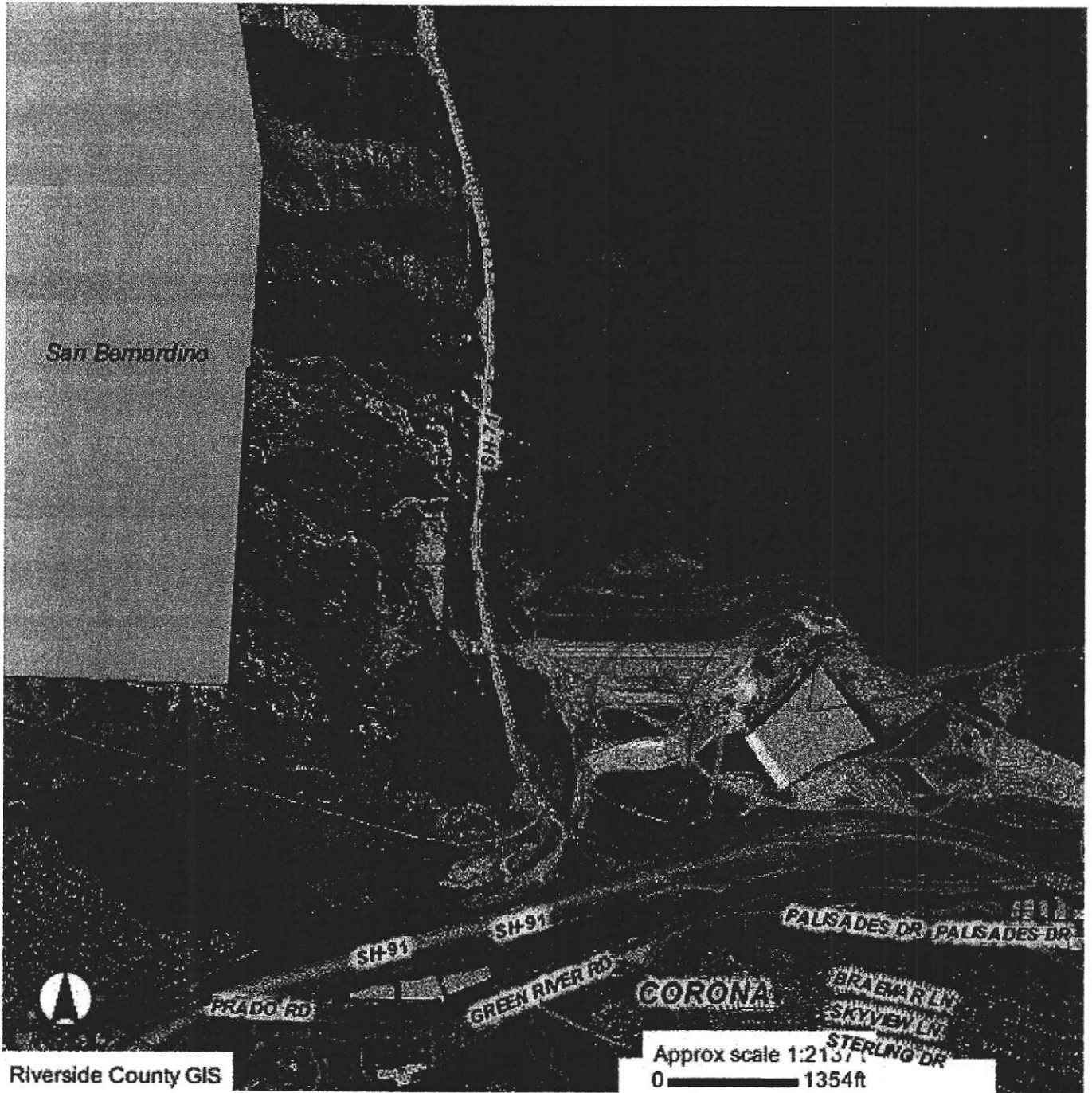


Riverside County GIS

Approx scale 1:57500
0 3593ft

NAME OF PARK	Prado Mine Site
OWNER	Chandler Real Properties
ASSESSOR'S PARCEL NUMBER(S)	101-040-005, 101-040-006, 101-040-007, 101-040-008, 101-040-009
SUPERVISORIAL DISTRICT	Second
SIZE OF PROPOSED PARK (acres)	159 acres
TYPE OF PARK	<ul style="list-style-type: none"> ■ Motorcycles ■ ATV ■ Rock Crawling ■ Motocross Track ■ Motorcycle Trials <input type="checkbox"/> Trail Riding <input type="checkbox"/> Improved Camping <input type="checkbox"/> Unimproved Camping ■ Safety Training
CURRENT AMENITIES	None, current mining site
PENDING ENTITLEMENTS	RCL00113 - Surface mine permit for Dan Copp Crushing Yard
CURRENT ZONING	M-R-A, W-2-5
GENERAL PLAN DESIGNATION	OS-MIN
AGRICULTURAL PRESERVE	No
ELEVATION CHANGE	459 - 856
CONSERVATION CRITERIA	HANS01862, EPD has recommended that the entire property be acquired for conservation. The RCA has not acted on this recommendation.
PROTECTED SPECIES	Burrowing Owl, Narrow Endemic Plant Species: San Diego ambrosia, Brand's Phacelia, San Miguel savory
WATER COURSE	None
TYPE OF TERRAIN	Current mining site, steep hills with flat areas
ACCESS TO AREA	Access issues with reconstruction of 71/91 interchange
CAMPING AVAILABLE	No
HIGH FIRE AREA	No
FAULTS	within 1/2 mile of the following faults: Chino Fault, Elsinore Fault, unnamed fault in Elsinore Fault Zone
MT. PALOMAR ORD. 655	Not applicable, 58 miles
BUFFER AREAS	Buffered by SR 71 to the east, Chino Hills State Park to the west and south and the Santa Ana River Regional Park to the north
CLOSEST RESIDENTIAL AREAS	3/4 mile to the southwest
CODE VIOLATIONS	None
ISSUES OF CONCERN	Access from SR 71, no secondary access

PRADO MINE

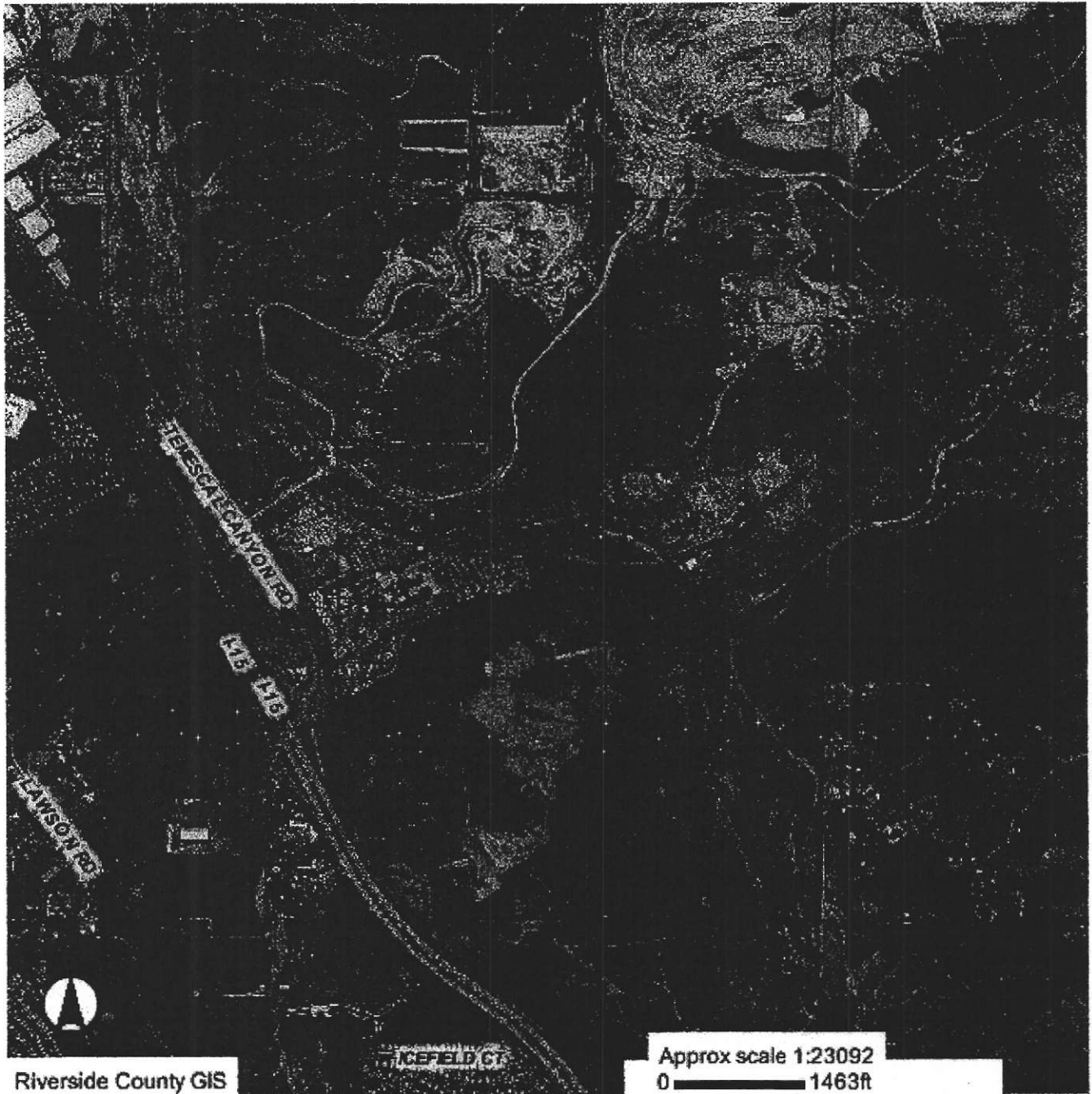


Riverside County GIS

Approx scale 1:21,371
0 1354ft

NAME OF PARK	Temescal Canyon
OWNER	Corona Clay Company
ASSESSOR'S PARCEL NUMBER(S)	283-190-019, 283-190-021, 283-190-022, 283-190-040, 283-200-003
SUPERVISORIAL DISTRICT	First
SIZE OF PROPOSED PARK (acres)	300 acres
TYPE OF PARK	<ul style="list-style-type: none"> ■ Motorcycles ■ ATV ■ Rock Crawling ■ Motocross Track ■ Motorcycle Trials <input type="checkbox"/> Trail Riding <input type="checkbox"/> Improved Camping <input type="checkbox"/> Unimproved Camping ■ Safety Training
CURRENT AMENITIES	Old mine site, current has three test tracks for motorcycles
PENDING ENTITLEMENTS	CUP03313 - Test track for motorbikes, CUP03265 - motorcycle test track, SMP00197R1- mining operation
CURRENT ZONING	M-M, M-R-A, M-R
GENERAL PLAN DESIGNATION	OS-MIN
AGRICULTURAL PRESERVE	No
ELEVATION CHANGE	980 - 1100
CONSERVATION CRITERIA	Primarily in Cell Group "F" and "G" of the MSHCP calling for conservation on the eastern portions of the site
PROTECTED SPECIES	Burrowing Owl, Thread-leaved brodiaea, Davidson's saltscale, Parish's brittlescale, Smooth Tarplant, Round-leaved filaree, Coulter's goldfields, Little Mousetail, Munz's onion, San Diego ambrosia, Slender-Horned Spineflower, Many-stemmed dudleya, Spreading navarretia, California Orcutt grass, San Miguel savory, Hammitt's clay-cress, Wright's trichocoronis
WATER COURSE	Adjacent to Temecula Creek
TYPE OF TERRAIN	Gently rolling to steep hills in the mined area.
ACCESS TO AREA	Access off Temescal Canyon Road and Dawson Creek Road
CAMPING AVAILABLE	No
HIGH FIRE AREA	Yes
FAULTS	within 1/2 mile of unnamed fault for Elsinore Fault Zone
MT. PALOMAR ORD. 655	Not applicable - 45 miles
BUFFER AREAS	Buffered to the north and east by the La Sierra Landfill and the Lake Matthews Reserve. There is an industrial area to the west
CLOSEST RESIDENTIAL AREAS	Residential areas are located to the southeast of the site in the Spanish Hills area and over a mile to the west on the west side of I-15.
CODE VIOLATIONS	unapproved business, illegal dumping, illegal grading, uses w/o proper permits
ISSUES OF CONCERN	Current test tracks are operated by the motorcycle industry and they may not want the public/competition to see test vehicles

Temescal Canyon



OPERATIONAL CONCEPTS

The type of management and operation of an OHV park will either make it a success or doom it to continual problems. Prior to developing a park, a decision is needed as to how and who will ultimately construct the facility and manage it. There are three primary methods that will generate a built facility. The County could construct the facility itself; could contract for a turn-key development that a contractor builds to County specifications; or the County could have an operator build the facility.

Likewise, the County could operate the facility itself; contract with an outside vendor to run a County operation; or have a third party operate the facility. The third party could be a for-profit operator, a non-profit organization, or a governmental entity other than the County. Each of these options leads to a different set of issues that must be evaluated before any OHV park can be opened.

Regardless of which of the above management/operational scenarios are followed, the National Off-Highway Vehicle Conservation Council recommends that a program containing four equally important elements is necessary to assure long-term viability of an OHV park: engineering, education, enforcement and evaluation.

Engineering

The concept of using engineering or facility design to address environmental and social issues is commonly used in recreation management. The primary principle that must be constantly acknowledged is that when visitors come to an OHV park to have fun, they will have fun. If they can have fun within the designated design of the OHV park, they will; if not, they will still have fun, but in ways that may cause management and environmental problems.

The ultimate facility must provide an opportunity for people to find a challenge in an appropriate manner. Trails should provide challenges by leaving obstacles in or near the trail or by building trails with higher levels of exposure. While each park may provide multiple opportunities for recreation, no one park will meet all recreational needs. The facilities that are built need to address the entire spectrum of OHV needs, from trails to motocross; hill climbs and rock crawling to sand dunes and camping options.

Education

Generally, people want to believe that most people want to do what is "right." The problem is they may not know what that is. While the easy view may be that doing what is "right" is a matter of using common sense, experience has shown that the link between "common sense" and "doing what is right" is education. A

basic premise is that educated riders are responsible riders, and responsible riders keep riding opportunities open and reduce impacts.

The value of information is dependent on how usable it is when received. It is important to provide information at the needed time and recognize that although the bulk of use may start at a local level, the facility is open and available to the larger community; the use pattern may evolve as the site becomes a destination for non-local riders.

Enforcement

Active and reasonable enforcement is critical to successful long-term management of OHV use. Enlightened enforcement methods assume that most people want to do what is right. Education should be stressed over citation. A review of the rules and firmly stating the needed corrective behavior with a warning is often far more effective and positive than a ticket, when an infraction is identified. Positive attitudes create positive programs, and the objective of enforcement is to obtain compliance with the rules.

Evaluation

Once the park is operational, it is necessary to effectively evaluate the effects of the recreational use on the facilities and the environment. It is equally important to evaluate the success of the programs from the perspective of the user and the effectiveness of the management. The evaluation or monitoring process can easily take on a life of its own and can consume a significant portion of the budget, if allowed to. An effective evaluation process must be as simple as possible. The results of the analysis must be documented and readily available to the agency staff and to the public.

RECOMMENDATIONS

The OHV Commission has completed its tasks as instructed by the Board of Supervisors: the identification of several candidate sites for use as off-highway vehicle parks, the extent and range of use for each candidate sites, and the Commission has provided advice to county staff and decision-makers. The Commission has performed these duties within its original time constraint and recommends that the following additional work be performed:

1. Evaluation of the suggested potential sites, to narrow the candidates to specific site recommendations.
2. Hold public hearings on recommended site(s) to identify potential issues of concerns.
3. Prepare an Environmental Impact Report on the selected site(s).
4. Develop a timeline for implementation of the final recommendations.

APPENDICIES

- A:** Form 11 – Formation of a Riverside County Off-Highway Vehicle Commission
- B:** Resolution No. 2006-101 – Establishing the Riverside County Off-Highway Vehicle Commission
- C:** Minutes of the Off-Highway Vehicle Commission
- D:** Interviews of Federal, State and Local Agencies
- E:** Riverside County Planning Commission, Trail Bike Park Standards (May 25, 1971)

**SUBMITTAL TO THE BOARD OF SUPERVISORS
COUNTY OF RIVERSIDE, STATE OF CALIFORNIA**



912

FROM: TLMA – Planning Department

SUBMITTAL DATE:
February 28, 2006

SUBJECT: Formation of a Riverside County Off-Highway Vehicle Commission

RECOMMENDED MOTION: That the Board of Supervisors:

1. Approve the formation of a Riverside County Off-Highway Vehicle Commission;
2. Adopt Resolution No. 2006-101, Establishing a Riverside County Off-Highway Vehicle Commission;
3. Adopt the proposed Bylaws for the Riverside County Off-Highway Vehicle Commission;
4. Direct the Riverside County Off-Highway Vehicle Commission, working with the Planning Department and other stakeholders (e.g., the Bureau of Land Management), to: identify sites for off-highway recreation, offer advice on public outreach and report back to the Board of Supervisors.

BACKGROUND: On November 22, 2006 (agenda item 3.23), the Board of Supervisors directed the Planning Department and County Counsel to return with a resolution establishing a Riverside County Off-Highway Vehicle (OHV) Commission, consistent with Resolution No. 2005-148.

Proposed Resolution No. 2006-101, Establishing the Riverside County Off-Highway Commission, is attached and recommended for adoption. The Resolution outlines: the purposes of the OHV Commission,

(Continued next page)

Robert C. Johnson, Planning Department Director

FINANCIAL DATA	Current F.Y. Total Cost:	\$ 0	In Current Year Budget:	No
	Current F.Y. Net County Cost:	\$ 0	Budget Adjustment:	No
	Annual Net County Cost:	\$ 0	For Fiscal Year:	\$15,000 - 2006/07

SOURCE OF FUNDS: Deposit Based Fees	Positions To Be Deleted Per A-30	<input type="checkbox"/>
	Requires 4/5 Vote	<input type="checkbox"/>

C.E.O. RECOMMENDATION:

APPROVE

County Executive Office Signature

- Policy
- Policy
- Consent
- Consent
- Per Exec. Ofc.

3.24

BACKGROUND: (continued)

Commission membership, term of membership, election of officers, designation of a Commission Secretary, frequency and location of meetings, quorum requirements, Brown Act governance, rules of order and procedure (specified in the attached Bylaws) and the duration of the Commission.

It is proposed that a five (5) member Commission be formed. The purposes of the Commission include: the identification of candidate sites for off-highway vehicle parks, providing input on related site acquisition issues, assessing the extent and range of use for candidate sites and providing guidance to county staff and decision-makers regarding public outreach for educational and informational purposes. It is recommended that the Commission work with the Planning Department and other stakeholders (e.g., the Bureau of Land Management) in the performance of their duties. In accordance with Resolution No. 2005-148, the Commission should report back to the Board of Supervisors on their progress and recommendations.

2 RESOLUTION No. 2006- 101

3 Establishing the Riverside County
4 Off-Highway Vehicle Commission

5 BE IT RESOLVED by the Board of Supervisor of the County of Riverside,
6 State of California, in regular session assembled on March 21, 2006, that there is
7 hereby established the Riverside County Off-Highway Vehicle Commission as follows:
8

9 1. PURPOSE: It shall be the purpose of the Riverside County Off-
10 Highway Vehicle Commission ("Commission") to advise and make recommendations to
11 the Board of Supervisors concerning (1) the identification of several candidate sites for
12 off-highway vehicle parks, (2) input on related site acquisition issues, (3) the extent and
13 range of use for candidate sites, and (4) the provision of advice to county staff and
14 decision-makers regarding public outreach for educational and informational purposes.
15

16 2. MEMBERS: The Commission shall consist of 5 members
17 appointed by each Board member. Commission members shall be residents of
18 Riverside County and shall serve without compensation, except for mileage at approved
19 County reimbursement rates to attend scheduled meetings.
20

21 3. TERMS: The terms of the Commission members shall be for two
22 years unless extended and will run concurrently with the duration of the Commission as
23 specified in Section 10.
24

25 4. OFFICERS: At the first regular meeting of each year, the
26 Commission shall elect a Chair and Vice Chair as specified in Resolution No. 2005-148,
27 who shall perform the duties specified therein.
28

1 5. **SECRETARY:** The Riverside County Planning Director, or his/her
2 designee, shall serve as Secretary of the Commission and shall be responsible for
3 performing the duties specified in Resolution No. 2005-148.

4
5 6. **MEETINGS:** The Commission shall meet bi-monthly, with the
6 primary meeting place to be the Riverside County Administrative Center, with alternate
7 meeting locations at publicly accessible facilities in each supervisorial district as
8 determined by the Commission.

9
10 7. **QUORUM:** A quorum shall consist of a majority of the number of
11 Commission positions filled at any time. Any action of the Commission shall require a
12 majority vote. The limited actions the Commission may take in the absence of a quorum
13 are specified by Resolution No. 2005-148.

14
15 8. **GOVERNANCE:** The Commission shall be bound and governed by
16 the provisions of the Ralph M. Brown Act, Resolution No. 2005-148, and all other
17 applicable Resolutions, laws, ordinances, rules, and County policies.

18 9. **BY-LAWS:** The Commission may adopt, and the Board of
19 Supervisors may approve, bylaws specifying all rules of order and procedure particular
20 to the Commission. Such bylaws shall not conflict with Resolution No. 2005-148, nor
21 with this Resolution.

22
23 10. **DURATION:** Existence of the Commission shall terminate on June
24 30, 2008, unless extended by the Board of Supervisors.

25
26
27 Legal Authority: Board of Supervisors

28 Date Established: 3/21/2006 , Resolution No. 2006-101

FORM APPROVED
COUNTY COUNSEL

MAR 15 2006

BY Gordon V. Ubo

Riverside County
Off-Highway Vehicle Commission

Bylaws

Approved by the Riverside County
Board of Supervisors
March 21, 2006
Resolution No. 2006-101

In order to provide for an efficient and expeditious handling of public meetings, and of the business of the Riverside County Off-Highway Vehicle Recreation Commission ("Commission"), an advisory body duly established by the Riverside County Board of Supervisors ("Board"), the following bylaws are promulgated. Whenever possible, these rules and procedures shall be constructed generally, and failure to observe them shall neither affect the jurisdiction of the Commission, nor invalidate any action taken at a meeting otherwise held in conformity with the law.

I. DUTIES OF THE COMMISSION:

The duties of the Commission shall be advisory to the Board, and shall be of the scope and activities as established by Resolution of the Board, as may be amended from time to time.

II. MEMBERSHIP AND OFFICERS OF THE COMMISSION:

A. Members of the Commission

The Commission shall consist of five (5) members as established pursuant to Resolution of the Board, as may be amended from time to time. The appointment, term vacancies, and removal of members shall be as set forth herein.

B. Length of Terms

Terms of appointment for members of the Commission shall be as prescribed by Resolution of the Board.

C. Residency of Commission Members

Residency requirements and provisions for members of the Commission shall be as prescribed by Resolution of the Board.

D. Election of Chair and Vice-Chair of the Commission

A Chair and Vice Chair shall be elected annually by the Commission at its first meeting after July 1 of each year, as specified by Resolution of the Board, as amended from time to time.

Whenever possible and appropriate, the Vice Chair from the previous year shall be automatically nominated as Chair the subsequent year. (Following the Chair's second year term if applicable.)

Neither the Chair nor Vice Chair shall occupy the same office for more than two consecutive one year terms, and a person who serves as Chair shall not serve as Vice Chair the following year.

In the event the Chair vacates the office for any reason, the Vice Chair automatically assumes the office of Chair, and shall call for an election at the next meeting.

In the absence of inability of the Chair to act, the Vice Chair shall act as Chair. The Vice Chair shall preside over any meetings of the Commission in the

absence or incapacity of the Chair. Either the Chair or the Vice Chair shall attend each meeting of the Commission.

E. Commissioner Attendance

All members are expected to regularly attend meetings of the Commission. Pursuant to Resolution of the Board, three (3) consecutive *unexcused* absences from meetings of the Commission by any member shall cause a letter to be issued by the Secretary of the Commission, with approval of the Chair, to the Board of Directors advising them of the absences and the Board declares a vacancy.

III. MEETINGS OF THE COMMISSION:

- A. All meetings of the Commission shall be open to the public and are subject to the Brown Act (Government Code Section 54940 et seq.), as may be amended from time to time.
- B. All meetings of the Commission shall be tape recorded by the Secretary for the purpose of producing the official, written minutes of the Commission.
- C. Meeting notices shall be posted by the Secretary or his/her designee in the manner required under the Brown Act.
- D. Any item of business on an agenda of the Commission that is not considered at the meeting shall be either:
1. Continued to the next scheduled meeting of the Commission;
 2. Adjourned to a date and time as designated by the Commission; or
 3. Removed from the agenda by the member submitting the item, or by approval of the Commission.
- E. Pursuant to Resolution of the Board, the presence of a quorum of the Commission is necessary for action to be taken at any regular or special meeting of the Commission. A quorum shall consist of a majority of the number of Commission positions filled at any time. Any action of the Commission shall require a majority vote. The limited actions other Commissioners may take in the absence of a quorum are specified by Resolution of the Board, as may be amended from time to time. Those actions include:
1. Take measures necessary to obtain a quorum;
 2. Fix the date and time to which to adjourn;
 3. Adjourn or take a recess; and/or
 4. Continue the entire agenda to the next meeting.
- F. The business of the Commission shall be taken up for consideration and disposition in the following order, except that items may be taken out of order by affirmative vote of a quorum:

1. Call to Order – Chair or Vice Chair in the absence of the Chair
2. Approve the Minutes (Prior Meeting)
3. Public Comments
4. Reports, Discussions and Action Items
5. Adjournment

- G. The Secretary, or his/her designee, shall attend all meetings of the Commission.
- H. As provided under the Brown Act, meetings of the Commission may be adjourned either by less than a quorum of members, or by the Secretary when all members are absent.
- I. Regular meetings of the Commission shall be held at least six times each year.
- J. Regular meetings of the Commission shall begin at 1:30 p.m., unless changed by unanimous consent of a quorum of the members.
- K. Regular meetings of the Commission may be held at the Riverside County Administration Center or on the grounds of publicly maintained facilities in Riverside County, or alternate sites suitable for meetings accessible to the public. Such alternate meeting locations shall comply with the provisions of applicable Board Resolutions and shall be decided by the Commission at the prior meeting.

IV. MEETING AGENDAS:

- A. Agendas for meetings of the Commission shall be prepared by the Secretary, subject to discussion with the Chair. Any Commission Member and/or County staff may submit an item for the agenda in accordance with the provisions of the Brown Act.
- B. Agenda items shall be submitted to the Secretary by no later than the Monday of two (2) weeks preceding the meeting, unless a County holiday necessitates moving the agenda deadline to an earlier time and date fixed by the Secretary.
- C. The Commission shall take no action nor discuss any item not appearing on the posted agenda. Members may briefly respond to statements made or questions posed by persons exercising their right to public comment. Members may, on their own initiative or in response to questions posed by the public, ask questions for clarification, refer a matter to staff or to other resources for factual information, request that staff make a presentation to the Commission at a subsequent meeting or request the Secretary place a matter of Commission business on a future agenda.
- D. Notwithstanding Section IVC, above, any item not on the agenda may be considered by the Commission only in accordance with applicable provisions of the Brown Act.

- E. No closed sessions shall be held by the Commission unless authorized by the Board and approved in advance by the Office of County Counsel.

V. MEETING MINUTES:

- A. Minutes shall be produced of all meetings of the Commission. Such minutes shall include, without limitations, the date, hours, and location of the meetings, notice of the meeting, names of the Commission members and staff present and absent, record of all official actions taken by the Commission, as defined herein, and the times of commencement and adjournment of the meetings.
- B. If any Commission Member arrives after the meeting has commenced or departs before the adjournment, the minutes shall indicate such time of arrival and departure.
- C. Reference to written reports or other written forms of communication submitted at a Commission meeting shall be included in the minutes with a record of action, if any, taken by the Commission on the report or other written communication.
- D. A brief summation of the oral reports and other forms of oral communication may be included in the minutes.
- E. The titles and numbers of resolutions adopted and other actions taken by the Commission shall be entered in to the minutes.
- F. Any member shall have the right to have his or her dissent from, or protest of, any action taken by the Commission entered into the minutes by requesting that his or her remarks be made "of record" at the time they make such dissent or protest. Upon such request, the Secretary shall enter a notation of the dissent and/or protest of the member in the minutes, along with a summation of the nature of the dissent and/or protest.
- G. Unless the reading of the minutes of the Commission meeting is requested by a Member, such minutes may be approved without reading, if a copy thereof has been previously provided to each member.
- H. Pursuant to Resolution of the Board, a copy of the minutes shall be forwarded to the Clerk of the Board promptly after the minutes are prepared and signed by the Secretary. Minutes approved by the Commission shall be distributed to all Commission members, to the members of the Board, to the Clerk of the Board, and to members of the public requesting such minutes, with the mailing of the next meeting agenda.

VI. OFFICIAL ACTION OF THE COMMISSION:

All official actions of the Commission shall be made by motion, second, and affirmative vote of a quorum of the Commission, pursuant to Resolution of the Board.

VII. PUBLIC COMMENT:

- A. Any person may comment and otherwise address the Commission regarding any matter relating to the scope and purpose of the Commission, in accordance with the provisions as set forth herein. Such comment(s) shall be made during the time set aside for public comments on the agenda, except when otherwise allowed by the Chair of the Commission, or in the absence of the Chair, the Vice-Chair. Preference shall be given to those persons who first submit a request in writing to the Secretary regarding their desire to make a comment or otherwise address the Commission.
- B. Each person addressing the Commission shall:
 - 1. State his or her name and address;
 - 2. Limit comments to three (3) minutes, unless additional time is allowed by the Chair, or in the absence of the Chair, the Vice-Chair, and
 - 3. Address comments to the members of the Commission.
- C. If an identifiable group of persons desires to address the Commission on the same subject matter or agenda item, the Chair, or in the absence of the Chair, the Vice-Chair, may request that a spokesperson be selected by the group to address the Commission. If different issues are to be presented on the subject matter or agenda item by any other member of the group, the Chair, or in the absence of the Chair, the Vice-Chair, may limit the number of persons and time for speaking, as he or she deems appropriate in order to avoid unnecessary repetition of issues.
- D. Any person making personal, impertinent, slanderous or profane remarks, or who becomes unruly while addressing the Commission, may be barred from further speaking and may be ejected if his or her conduct disrupts the meeting, pursuant to Resolution of the Board.
- E. In the event any meeting is willfully interrupted by a person or persons so as to render the orderly conduct of such meeting infeasible, and order cannot be restored by the removal of the individual(s) who are willfully interrupting the meeting, the Chair, or in the absence of the Chair, the Vice Chair, may order the meeting room cleared and continue in session.

VIII. PROCEDURE:

- A. In the event a dispute arises concerning conduct and/or procedural matters not specifically addressed herein, then the Chair, or the Vice Chair, in the absence of the Chair, may resolve and otherwise rule on the matter(s), unless the Commission by appropriate motion duly made and carried in accordance with provisions herein, deems otherwise.

B. Procedure with respect to motions shall be as follows:

1. When a motion is under consideration by the Commission, no other motion shall be received unless one of the following actions is taken on the motion under consideration:

- a. To adopt and approve the motion; or
- b. To continue the motion to a certain date; or
- c. To direct staff on the matter, and continue the motion to a later date for consideration; or
- d. To amend the motion; or
- e. To postpone indefinitely, or "table", the motion.

2. When a motion is seconded, the second shall be stated by the Chair before consideration of any other matter may begin.

C. A member called to order by the Chair shall relinquish the floor unless allowed to explain, and the Commission, if appealed to, resolves the matter. If there is no appeal, the ruling of the Chair shall be final.

D. Procedure with respect to voting shall be as follows:

1. Pursuant to Resolution of the Board, affirmative vote of not less than a quorum shall be necessary for the transaction of business. An affirmative vote of less than a quorum may adjourn a meeting to a specified time and place.

2. An abstention by any member will not change whether an affirmative action may be taken by the Commission due to a quorum.

IX. REPORTS BY THE COMMISSION TO THE BOARD OF SUPERVISORS:

As required by Resolution of the Board, the Commission shall submit a report to the Board by June 30 of each year. Such report shall contain a report of the Commission's activities during the year. The Chair of the Commission, or in the absence of the Chair, the Vice-Chair, shall submit reports to the Board, as requested and authorized by the Commission. The Secretary shall prepare or assist with the preparation of all reports as necessary and appropriate.

X. COMPENSATION OF COMMISSION MEMBERS:

Members of the Commission shall serve without compensation. However, members may receive mileage reimbursement at the current rate approved by the Board for use of private vehicles for travel to and from scheduled meetings of the Commission. Reimbursement for use of private vehicles for travel to other meetings related to the business of the Commission will be made only if approved by the Planning Director.

XI. AMENDMENTS TO THE BYLAWS:

These bylaws may be amended from time to time upon affirmative vote by the Commission as specified herein and with approval of the Board.

XII. DISSOLUTION OF THE COMMISSION:

The Commission may only be dissolved by action of the Board of Supervisors.

XIII. SEVERABILITY AND INVALIDITY:

If any provision of these bylaws or any amendment hereto is found to be in violation of or in conflict with any County ordinance, resolution, or policy; or to be invalid, void or unenforceable by any court of competent jurisdiction, the remaining provisions shall nevertheless continue in full force without being impaired or invalidated in any way, and shall be in effect only to the extent that it is in contravention of applicable ordinance, resolution, policies or laws without invalidating the remaining provisions.

XIV. CONFLICT OF INTEREST DISCLOSURE:

Each member of the Commission shall disclose in advance any financial interest the member has or may acquire in any item pending before the Commission for discussion and/or action pursuant to Resolution of the Board, as may be amended from time to time.

Each year all members of the Commission shall complete the Conflict of Interest Form 700 of the Fair Political Practices Commission (FPPC) entitled "Statement of Economic Interests for Designated Officials and Employees" in accordance with the requirements of the FPPC and in accordance with the requirements of the Conflicts of Interest Code as adopted by the County.

Legal Authority: Riverside County Board of Supervisors
Date Established: , Resolution



RIVERSIDE COUNTY OFF-HIGHWAY VEHICLE COMMISSION

• Jason Fried • Larry Riddle • Anthony Migliore • Stanley Todd McNaughton • Meg Grossglass •

OFF- HIGHWAY VEHICLE COMMISSION MINUTE ORDER NOVEMBER 15, 2006 RIVERSIDE MEETING

PROJECT DESCRIPTION: The sole purpose of the Commission, as established by the Board of Supervisors, is to advise and make recommendations to the Board concerning: (1) The identification of several candidate sites for off-highway vehicle parks, (2) Input on related site acquisition issues, (3) The extent and range of use for candidate sites, and (4) The provision of advice to county staff and decision-makers regarding public outreach for educational and information purposes.

MEETING SUMMARY: Roll-call – Commissioner Stanley Todd McNaughton absent; All other (4) Commissioner's presence. Time: 9:10 AM

AGENDA ITEM 1.0: Planning Director's Comments:

The Board requested the organization of the OHV Commission and Mark Balys has been selected to take on the task of putting together an Ordinance for OHV use in the County of Riverside.

AGENDA ITEM 2.0: Scope of Authority

Due to the proposed constraints and limitations on OHV use in the County of Riverside, the focus and goal for this commission as requested by the Board of Supervisors is to locate potential sites for the public arena which would include private sites to be used as well.

The Board closed hearings for the OHV Ordinance in order to have an EIR completed, at this time the EIR is about 6-8 months out from being completed, once completed, the Commission would like to review and have authority to comment and or request changes if needed.

The Director has recommended to the commission to contact Mark Balys when information is needed regarding OHV for discussion purposes.

The focus for the meetings will not be for public complaints but to resolve location issues for OHV; therefore, it will be the intention of this commission to maintain focus through the duration of commission meetings.

AGENDA ITEM 3.0: Administrative Matters

- 3.1 Selection of Chairman - Anthony Migliore nominated, approved by the OHV Commission by a vote of 4-0 (Commissioner Stanley Todd McNaughton absent)

Selection of Vice Chairman - Jason Fried nominated, approved by the OHV Commission by a vote of 4-0 (Commissioner Stanley Todd McNaughton absent)

- 3.2 Frequency of meetings: Meetings are to be held bi-monthly or when subject matter is requested. The duration of commission is expected to last 2 years.
- 3.3 Brown Act: Brown act would apply to this commission and the meetings will be advertised to the public. Brown act instructions given, discussed and understood by all commissioners.

AGENDA ITEM 4.0: Public Comments - No members of the public present

AGENDA ITEM 5.0: Open Discussion

A map was presented showing all of Riverside County Boundaries and MSHCP Cells. The map included highlighted areas in orange which indicates areas outside the conservation and fall within the allowed zone and general plan foundation areas that could be a likely location for OHV Parks, which includes a mix of county and private property owners. The commission requested that the map have an overlay showing the following areas: Existing Parks, Coachella Valley protected areas, State and or National parks, Water Districts, State, Federal and Public Land, Indian Land, Wilderness areas and Military Bases that are off limits to potential OHV parks.

For maintaining and operating an OHV Park with County property, plan could be to lease it and have a private party own and operate.

Commissioners requested to be sent a hard copy of the draft Ordinance (850) and the draft General Plan and Consistency Zoning so to better understand the areas that would be suitable for OHV Parks.

Commissioners suggested possible speakers from organizations such as BLM or others that would be able to comment on there vision and or status of OHV Parks within their area. Another suggested invitee would be State Parks who can offer a possible partnership and or suggestions and information on operating and maintaining the OHV parks.

The next meeting to be held on Thursday January 11, 2007.

Suggested topics to be the following: Review of the map with suggested amendments added. Briefing on Ordinance 850, General Plan and Consistency Zoning update.

AGENDA ITEM 6.0: Adjournment

Tape:

The entire discussion of this agenda item can be found on Tape No 1A. For a copy of the Tape, please contact Nikki Wyrick, OHV Commission Secretary, at (951) 955-3449 or E-mail at nwyrick@rctlma.org.



RIVERSIDE COUNTY OFF-HIGHWAY VEHICLE COMMISSION

• Jason Fried • Larry Riddle • Anthony Migliore • Stanley Todd McNaughton • Meg Grossglass •

OFF HIGHWAY VEHICLE COMMISSION MINUTE ORDER JANUARY 11, 2007 RIVERSIDE MEETING

PROJECT DESCRIPTION: The sole purpose of the Commission, as established by the Board of Supervisors, is to advise and make recommendations to the Board concerning: (1) The identification of several candidate sites for off-highway vehicle parks, (2) Input on related site acquisition issues, (3) The extent and range of use for candidate sites, and (4) The provision of advice to county staff and decision-makers regarding public outreach for educational and information purposes.

MEETING SUMMARY: Roll-call – Commissioner Stanley Todd McNaughton absent; All other (4) Commissioner's presence. Time: 10:12 AM

AGENDA ITEM 1.0: Planning Director's Comments

Robert Johnson is no longer the Director; Ron Goldman has accepted the position of Interim Planning Director.

Introduction of Grace Williams, a staff member who will be handling the OHV Commission.

In regards to the status of the EIR for the OHV Amendment to Ordinance 348, one response to the County RFP has been received to date. The Board allocated \$100,000 to do a focused EIR and the bid came in at \$1.3 Million which is beyond what we anticipated. We are currently working with County Counsel to redo the scope of services to focus in on the aspect of displacement, which means if we are going to regulate OHV use on private property what are the displacement impacts on other parcels public or private due to those standards. Once that occurs we will be working on looking for people to put together a new EIR.

Next meeting to be held on February 1, 2007 at 10:00 AM

AGENDA ITEM 2.0: Administrative Matters

- 2.1 GIS Map Review: A map was provided to each Commissioner with the items added and changes requested at the last meeting (12/15/07).
- 2.2 Ordinance 850 presentation: A copy of the Draft Ordinance was provided to each Commissioner and was given an overview by Mark Baly.

AGENDA ITEM 3.0: Public Comments

No members of the public present

AGENDA ITEM 4.0: Open Discussion

Guest speaker suggestions for the next couple of meetings; Forest Service, BLM (Steve), State OHV Division (Daphne Green).

The Commissioners have requested the following: Information placed on the County's web site about the OHV Commission; Business cards; A distribution list compiled and updated as needed

of all the interested parties and/or who have inquired about the status of the OHV Ordinance, so to keep the public updated.

Commissioner would like to see a plan of action (short time goals to be discussed at each meeting) discussed on the next agenda; possibly make this a category of discussion on each agenda.

Commissioners would like to have site visits when appropriate.

Items to be included on next agenda: Speakers, more overlay to existing map, short term goals.

AGENDA ITME 5.0: Adjournment

Tape:

The entire discussion of this agenda item can be found on Tape 1A,1B & 2A. For a copy of the Tape, please contact Nikki Wyrick, OHV Commission Secretary, at (951) 955-2839 or E-mail at nwyrick@rctlma.org.

RIVERSIDE COUNTY OFF-HIGHWAY VEHICLE COMMISSION

• Jason Fried • Larry Riddle • Anthony Migliore • Stanley Todd McNaughton • Meg Grossglass •



10:00 A.M.

February 22, 2007

MINUTES

Thursday, February 22, 2007 - 10:00 A.M.

Riverside County Administrative Center, 2nd Floor Annex

Members Present

List of members present:

Jason Fried (Vice Chairman filling in for Anthony Migliore, Chairman)

Larry Riddle

Meg Grossglass

Anthony Migliore (arrived at 10:30 am)

List of members absent:

Stanley Todd McNaughton

1. **NOVEMBER 15, 2006 AND JANUARY 11, 2007 MEETING MINUTES (4 MIN)**

Motion: That the November 15, 2006 and January 11, 2007 meeting minutes be approved.

Discussion: None

Status: The November 15, 2006 and January 11, 2007 minutes were approved as is.

2. **ADMINISTRATIVE MATTER**

Discussion: **INTRODUCTION OF JIM FAGELSON, DEPUTY PLANNING DIRECTOR AND NIKKI WYRICK, SECRETARY**

FORM 700 OF THE FAIR POLITICAL PRACTICES COMMISSION

B.T. Miller of County Counsel spoke to advise the commission on the necessity to file a Form 700. After discussing the issues surrounding such a filing it was decided that at this time there does not seem to be a need for this commission to file and will be reviewed again at a later date.

OHV COMMISSION WEBSITE

Grace Williams explained that the website is now available and how it works, she also asked the commissioners if they had suggestions as to items they would like to have added. Grace advised that if they choose, they may have their pictures with a small bibliography on the website; the commissioners agreed that they can work on the site over time. Jason Fried asked to have a direct link to OHV Commission website from main home page where the other commissions are listed.

GIS MAP

Jason Fried mentioned that the Wilderness, Natural Preserve and Open Space is still grouped together and due to the different rules that apply they need to be separated out to two different categories; Also, the City Sphere of Influence should be shown on the map or as an attachment due to the possible impacts they may have on the potential sites and ensure there are no communication breakdown issues with the cities effected. Mark Balys said that if a location selected was to be a County facility the property would then not be subject to its own zoning requirements.

3. SPEAKER FROM RCA – KEN GRAFF, DIRECTOR OF LAND ACQUISITION AND PROPERTY MANAGEMENT

Discussion: Ken Graff explained to the commission the goal and the progress to date of the Riverside Conservation Authority. The goal is to obtain land for the purpose of biological, reserve and conservation. The progress is as follows: The RCA has a goal of obtaining 153,000 acres over a 25 year period; to date, the RCA has acquired 36,000 acres. This information is helpful to the commission in the selection of land for OHV use.

4. PUBLIC COMMENTS

Discussion: None

5. OPEN DISCUSSION

Discussion: The commission would like a calendar set for remainder of the year showing meeting dates, times and locations. 3rd or 4th Thursday of every month is popular choice of all commissioners. 10:00 AM agreed start time for meetings. Requested speakers: State Representative, BLM and the Forest Service.

The commission states the importance of site visits throughout the decision process; therefore, once enough information is acquired by the commission and choice spots have been selected a site visit would then be in order. Site Visits would be advertised as a work shop. Meg Grossland suggested having County Parks as a guest speaker to give direction on the possibilities of managing an OHV Park. Anthony Migliore suggests that if a property is selected as a possibility and it is shown to not be big enough for an OHV Park, could this then be used as a Motocross Park. The discussion went forward with ways to narrow down sites by process of elimination. Phase 1: Identify park requirements and types of land holders. Phase 2: Identify approximately 10 sites; refine site selection by way of site visits. Phase 3: Reduce prospective sites down to 5 and refine site requirements Phase 4: Report to the Board of Supervisors. Jason Fried would like to have Open Discussion place back on the agenda.

6. ADJOURNMENT



RIVERSIDE COUNTY OFF-HIGHWAY VEHICLE COMMISSION

• Jason Fried • Larry Riddle • Anthony Migliore • Brian Nestande • Meg Grossglass •

10:00 A.M.

March 15, 2007

MINUTES

Thursday, March 15, 2007 - 10:00 A.M.

Riverside County Administrative Center, 2nd Floor Annex

Members Present

List of members present:

Jason Fried
Larry Riddle
Meg Grossglass
Anthony Migliore
Brian Nestande

List of members absent:

All members present

1. FEBRUARY 22, 2007 MEETING MINUTES (4 MIN)

Motion: That the February 22, 2007 meeting minutes be approved.

Discussion: Anthony Migliore would like to add the phasing plan discussed at the February 22, 2007 meeting: The phasing plan would help narrow down the possible site locations for OHV Parks. Phase 1: Identify park requirements and types of land holders. Phase 2: Identify approximately 10 sites; refine site selection by way of site visits. Phase 3: Reduce prospective sites down to 5 and refine site requirements. Phase 4: Report to the Board of Supervisors. Jason Fried would like to have Open Discussion place back on the agenda.

Status: The February 22, 2007 meeting minutes were approved as is.

2. ADMINISTRATIVE MATTER

Discussion: INTRODUCTION BRIAN NESTANDE, 4TH DISTRICT COMMISSIONER

MEETING CALENDAR

Motion: That the Meeting Calendar would be approved.

Discussion: The commission discussed proposed dates, guest speakers and field visits as it relates to proposed annual calendar. Jerry Jolliffe requested that a chart be prepared showing the phasing plan with prospective speakers, site visits and any type of action that would help facilitate the proposed plan.

Status: Approved as is.

WORKSHOPS AND FIELDTRIPS

The Commission asked for direction on the process of updating the Board of Supervisors. Staff informed them of an annual report to be scheduled for June. Any questions from the commission for the Board will go through staff.

3. PUBLIC COMMENTS

Discussion: No public comments

4. OPEN DISCUSSION: (Added to the agenda at the meeting)

Discussion: Jason Fried requested that more information is given regarding the MSHCP Reserve Area Map specifically what the numbers 1-9 mean and requested that the legend be induced in size so to be more legible. Jason also requested that the commission's ongoing map be updated as soon as possible to reflect the decisions made soon thereafter each meeting as needed to be ready for the next meeting. The commission discussed the base map and what it should include, they concluded the following suggestions: supervisor's districts, cities and city sphere of influence, major roads and highways, streams and lakes, topographic, zoning (distinguishing all zones that are OHV compatible) MSHC, open space.

5. SPEAKER – DANA BELL, SENIOR PROJECT COORDINATOR WITH THE NATIONAL OFF-HIGHWAY VEHICLE CONSERVATION COUNCIL.

Discussion: The following materials were distributed to the commission by Dana Bell: Activity books on Youth Programs, Park Guidelines, Management Guidelines for OHV's, and a State booklet on Taking the Highroad. Dana's main objective for this presentation is to inform the commission on National Off-highway Vehicle Conservation Council (NOVCC), off-highway vehicle development along with general management principles. National Off-highway Vehicle Council (NOVCC) is a non-profit, educational foundation, also a non-membership organization. The purpose of this program is to develop tools and materials and get them out on the ground for land managers, officials and any agency that are going to have anything to do with off-highway vehicle recreation and to the OHV recreation public with the purpose of providing quality opportunity for the recreationist while protecting the resources. For further information on this presentation a CD of the entire meeting can be purchased by contacting Sophia Nolasco, Planning Commission Secretary at (951) 955-3251 or email at snolasco@rctlma.org.

6. LUNCH**7. ADJOURNMENT**



RIVERSIDE COUNTY OFF-HIGHWAY VEHICLE COMMISSION

• Jason Fried • Larry Riddle • Anthony Migliore • Brian Nestande • Meg Grossglass •

10:00 A.M.

May 17, 2007

MINUTES

Thursday, April 19, 2007 - 10:00 A.M.
Riverside County Administrative Center, 2nd Floor Annex

Members Present

List of members present:

Jason Fried
Larry Riddle
Meg Grossglass
Anthony Migliore
Brian Nestande

List of members absent:

All members present

1. **March 15, 2007 MEETING MINUTES (4 MIN)**

Motion: That the March 15, 2007 meeting minutes be approved.

Discussion: Anthony Migliore would like to see the phasing plan that was previously discussed at the February 22, 2007 meeting: The phasing plan would help narrow down the possible site locations for OHV Parks. Phase 1: Identify park requirements and types of land holders. Phase 2: Identify approximately 10 sites; refine site selection by way of site visits. Phase 3: Reduce prospective sites down to 5 and refine site requirements Phase 4: Report to the Board of Supervisors. Jason Fried would like to have Open Discussion place back on the agenda.

Status: The March 15, 2007 meeting minutes were approved with the amendment above.

2. **ADMINISTRATIVE MATTER**

Discussion: Jason Fried suggested having Open Discussion placed on the agenda.

Motion: That Open Discussion among committee members would be placed on future agendas.

Discussion: Anthony Miglore would like to know the status of updated maps.

Status: Jerry Jolliffe suggested committee members provide him with details on what they would like to see on the base map. Anthony Miglore stated this information had already been provided. There were approximately 5 items the committee would like to see on this base map. Jerry Jolliffe stated he would get the in depth information from the previous OHV commission meeting and make sure the items

are on the map. Once this is completed, Jerry Jolliffe will email a PDF file to commission members.

Motion: That the OHV Commission Website have a direct link from the main home page.

Status: Jerry Jolliffe and Jim Fagelson stated there is an issue with having the OHV Commission having a link from the main home page. The county will only place a Commission on the web site that was adopted under the original ordinance. The OHV was created after this took place. However, Jim Fagelson and Jerry Jolliffe will meet with County Counsel to see what can be done about placing the OHV Commission website on the county's main home page.

Discussion: Is the State OHV and Forest Service coming to an upcoming OHV meeting?

Status: Jerry Jolliffe stated he is in the process of trying to get the State OHV and the Forest Service to attend the next OHV meeting. However, at this time nothing has been confirmed yet.

Discussion: Board Preparation

Status: The OHV commission needs to prepare for the Board. Anthony Miglore suggested that the committee prepares a presentation for the Board. It is important to have a source document completed. It was suggested that for the next OHV meeting, the State OHV and Forest Service come to help the OHV Commission build on the presentation for Board. The Commission has decided to have a longer work session to prepare for the Board. The meeting will start at 10 a.m. and last until 2 p.m. or later if needed. The Commission has decided that even if the State OHV or Forest OHV does not attend the next meeting, the committee will stay to prepare an outline for the Board presentation. Staff will then fill in the blanks. A first draft presentation will be completed to make adjustments. If need be, a second draft will be done in early June. The Commission has decided that after the field trip in June, there will be a brief meeting to look at the first draft and revise if necessary. It is important for the Board to know the direction of OHV. A presentation will show the Board the full spectrum of the OHV's direction. The OHV Commission has decided that it is necessary to have a completed Board presentation by the end of June. In order to accomplish this, a sub-committee may be needed. Jerry Jolliffe will talk with County Counsel to check on the legalities of forming sub-committees.

3. PUBLIC COMMENTS

Discussion: No public comments

4. Public Speaker-Mona Daniels, Outdoor Recreation Planner for the Bureau of Land Management (BLM).

Discussion: 4.1- Ms. Daniels is located in the Palm Springs office of BLM. Ms. Daniels provided the OHV Commission maps that showed BLM Land in Riverside County. Ms. Daniel's main objective for this presentation was to inform the Commission of BLM land that could serve as potential OHV parks in Riverside County. Ms. Daniels wanted the Commission to know that BLM land is quickly diminishing. If the Commission were to partner with BLM, it was suggested that the Commission and BLM could charge clients for the usage of the parks which would prevent OHV from having to purchase land. The OHV park program would be designed to

provide service areas desired or needed. OHV parks need to meet the needs and desires of the OHV public. This will, in turn, generate more public support. OHV may need to identify at least one site in the Badlands. Ms. Daniels will research this and report findings to Jerry Jolliffe. OHV wants to be diversified to attract more and more customers. Ms. Daniels left maps with Jerry Jolliffe for the OHV Commission to review BLM land in Riverside County.

Discussion:

4.2- Potential OHV park site proposal was emailed by Dan Silver, Executive Director, Endangered Habitats League. However, Mr. Silver was not present at the OHV meeting. OHV Commission recommended for Dan Silver to get on a later agenda to provide a presentation. Anthony Miglore does not want to take submission of materials because the materials were not addressed directly to OHV.

Status:

Jim Fagelson will contact Dan Silver and see if he would be interested in coming to an OHV meeting to do a presentation.

5.

Open discussion among Commission Members

Discussion:

The commission discussed pay for play. Will the commission charge customers for the usage of the parks? Jason Fried suggested a tier system could be created. This would mean non-county residents would pay higher fees for usage of parks. County residents would pay less for the usage of OHV parks. Furthermore, it was determined that money is going to be needed for OHV sites. The Commission would like to know what will be the county's cost in all of this. OHV has decided that whatever takes place financially and in turn of the commission as a whole, there must be a well managed structure in order to be successful. For further information on this presentation a CD of the entire meeting can be purchased by contacting Sophia Nolasco, Planning Commission Secretary at (951) 955-3251 or email at snolasco@rctlma.org.

6.

ADJOURNMENT



RIVERSIDE COUNTY OFF-HIGHWAY VEHICLE COMMISSION

• Jason Fried • Larry Riddle • Anthony Migliore • Brian Nestande • Meg Grossglass •

10:00 A.M.

July, 2007

MINUTES

Thursday, May 17, 2007 - 10:00 A.M.

Riverside County Administrative Center, 2nd Floor Annex

Members Present

List of members present:

Jason Fried
Larry Riddle
Meg Grossglass
Anthony Migliore
Brian Nestande

List of members absent:

All members present

1. May 17, 2007 MEETING MINUTES (4 MIN)

Motion: The April 19, 2007 meeting minutes are approved.

Discussion: Jayson Fried would like to see Anthony Migliore making the suggested statement under 1.- regarding the phasing plan previously discussed at the February 22, 2007 meeting. and correction in section 4-, under 4.1- to state it was suggested that the Commission and BLM could charge clients for park usage. Also, OHV may need to identify one site in the Badlands. 4.2- to read OHV recommended for Dan Silver to get on a later agenda and in the final discussion in 5-. to read Jason Fried suggested a tier system could be created. Anthony Milgliore would like to see in 4.2- OHV park site paper was emailed to the County by Dan Silver and OHV Commission recommended for Dan Silver to get on a later agenda.

Status: The March 15, 2007 meeting minutes were approved with the amendment above.

2. PUBLIC COMMENTS

Discussion: No public comments

3. GUEST SPEAKER

John Ladley, Recreation Officer San Jacinto Ranger District. San Bernardino National Forest.

Discussion: John gave an overview of off highway vehicles opportunities, proposals for travel route management and future trail planning are currently underway. John provided Riverside County and San Bernardino County National Forest maps to

review. John discussed existing travel routes within the Riverside and San Bernardino County Forest Districts. The Riverside County portion of the forest allows street legal vehicles on many of the travel routes (licensed plate vehicles). Green sticker users are allowed to use forest roads. Mountain bikes and horses are allowed on the same roads, but typically go to other areas because they prefer not to mix with OHV traffic. John pointed out examples of OHV roads on the map. For example: San Jacinto Truck Trail west of Hemet heads up to Pine Cove Road and OHV's are not allowed in residential areas. Most roads used for OHV are marked and or numbered. Continued general discussion.

Meg Grossglass asked if there are any open OHV route designations and how is it funded. John Ladley stated funding is coming from the national level and regional level, however, there is no funding available at this point. Continued general discussion.

Anthony Migliore asked how green sticker or license plate vehicles access certain roads since many of the trails are gated. How can the public differentiate seasonal and non seasonal roads and if there is an organized system in place for recreational riding. John Ladley stated the public can contact the ranger station to find out what gates are opened and closed. The forest district is looking to reclassify some of the forest roads west of Idyllwild and east of Hemet. They are not proposing any new construction at this time.

Daphne Green stated that when the forest was opened, you could go anywhere on the trails. Now we are recognizing that there is a need to have designated trail processes, some forests already have those processes in place, others do not. Continued general discussion.

Status:

The national forest has been asked to look at incorporating GPS locators so OHV can distinguish between legal and illegal routes. Create a working group to evaluate the current system and make minor changes. Establish a websites that shows available OHV routes and their status throughout the year.

3.2

Daphne C. Green, Deputy Director, California Off-Highway Motor Vehicular Recreation Commission, California State Parks Department

Discussion:

Thirty-five (35) years ago, essentially 1971, California recognized that the demand for OHV recreation had increased at such a level that the environmental damage was just becoming intolerable and so two (2) members of legislature came together, an off-roader and a member of the environmental community, an essentially established the OHV Division.

Their mission is to provide statewide leadership for OHV recreation and establish relationships with the counties, certain state parks, and federal agencies, forest service, BLM and native-american tribes. The commission has allocated about \$300 million dollars to the forest service and BLM combined.

Ms. Green clarified that California defines off-highway vehicle recreation as any vehicle which goes off pavement on dirt, whether or not you are a street legal vehicle, typically your pickup truck, 4X4, SUV, or a green sticker vehicle - a non-highway vehicle. They can be anything from dirt bikes, ATV's, sand rails, buggies, golf carts.

Ms. Green stated that the number of green sticker registered vehicles dollars in Riverside County as of 03-3-07 was \$105,000. In the past, for every one (1)

registered, there were six (6) that were unregistered. Since the institution of the sticker program, it is now about a one-to-one.

California is changing based upon racial lines. Significant Hispanic participation in OHV recreation can be seen in southern California. The State needs to make sure we're reaching out to those communities, developing educational programs that are multi-lingual and printing maps and brochures that address various needs and issues. Historically, Caucasians wanted single camping opportunities, but now what we are seeing in the Latino community is much more group camping.

In the Angeles National Forest, 67% of the people who were going to recreate were women and they had their children and their top priorities were safe OHV routes, no garbage and lack of graffiti. The State needs to look at how the population is changing and expanding in the world of OHV recreation. Essentially, the State is finding that customers are not only driving to drive, but also driving to access other forms of recreation. We are seeing an increase now in terms of supercross and motorcross.

In terms of the ATV, we are starting to see the two-seater in the ATV. The 50 inches of a standard ATV, when you add a different pair of tires to that, you're no longer on that 50" track. So what does that mean in terms of trail design? What do you do when ATV's are set up for competition?

The recreational utility vehicle market is one of the fastest growing segments with an increase of 273% in three years. Average cost of the vehicle is \$9,000.00. In the three months after purchase an additional \$1,200.00 is spent. Continued general discussion.

The entrepreneurial spirit in the OHV community is unbelievable. There are over a million non-highway vehicles currently registered in California. The five (5) highest counties in California are Los Angeles, San Diego, Riverside, San Bernardino and Orange, in that order. The most popular park is Oceano Dunes, which was established in 1906 with approximately 3,600 acres and over two (2) million visitors per year.

Green sticker money goes to the county. There are 58 counties in California. We are looking at an increase in green sticker fees. Currently they are \$25.00 every two (2) years, but they will possibly be goes up to \$67.00 or \$75.00. It has also been suggested that they be raised to \$40.00 or \$50.00 per year. There was also a discussion around trust funds (about 82% comes from fuel taxes), competitive grants, green sticker and entrance fees. Riverside County received \$127,000. in lieu funds in 2006. A discussion was held around who gets what portion of the fees and whether it is determined by zip code.

A discussion was held regarding possibly creating a park in the "Badlands". It was suggested that Riverside County consider looking at 3 or 4 small parks (150 to about 600 acres each). The discussion continued around what was feasible to consider around future proposed park sites.

4.

PUBLIC COMMENTS

Discussion:

No public comments

5. **Open discussion among Commission Members**

Discussion:

The commission discussed pay for play. Will the commission charge customers for the usage of the parks? Jason Fried suggested a tier system could be created. This would mean non-county residents would pay higher fees for usage of parks. County residents would pay less for the usage of OHV parks. Furthermore, it was determined that money is going to be needed for OHV parks. The Commission would like to know what will be the county's cost in all of this. OHV has decided that whatever takes place financially and in turn of the commission as a whole, there must be a well managed structure in order to be successful.

6. **ADJOURNMENT**



RIVERSIDE COUNTY OFF-HIGHWAY VEHICLE COMMISSION

• Jason Fried • Larry Riddle • Anthony Migliore • Brian Nestande • Meg Grossglass •

10:00 A.M.

July 19, 2007

MINUTES

Thursday, June 21, 2007 – 7:30 A.M.

Bureau of Land Management – Palm Springs Office

Members Present

List of members present:

Jason Fried
Anthony Migliore
Brian Nestande

List of members absent:

Larry Riddle
Meg Grossglass

1.

TOUR OF BLM SITES

A tour of various sites owned by the Bureau of Land Management was conducted by Mona Daniels, Recreational Coordinator for the Bureau of Land Management, Palm Springs Office. The first site was adjacent to Fargo Canyon Road, north of I-10 and east of Dillon Road. The site is approximately 640 acres and consists of flat to rolling terrain that overlooks the eastern portion of the Coachella Valley. This site has a connection to the Colorado River Aqueduct road through Fargo Canyon and Rockhouse Canyon. Existing trails also head east, on the north side of I-10 and connects to SCE powerline easements.

The second site visited is know as "Summit Flats" which is located off Red Cloud Road and Summit Road. The area is several 100 acres and has a variety of flat desert areas and hill climbs. The area was originally graded in the early 1960's as a staging area for the movie "The Professionals." The area is currently used by recreational vehicles, OHV and general camping. No amenities currently exist, but BLM is willing to cooperate with the County to develop the necessary facilities. This area connects to a number of permanent trails including the "Bradshaw Trail" which runs from Mecca to the Colorado River.

The third area on the tour was Box Canyon Road which has some camping possibilities as well as connection to existing trails. The "Hidden Springs Trail" goes through the Mecca Hill Wilderness area and connects to the Meccacopia Trail which has seasonal closures due to its path through the wilderness area and potential flooding.

The Meccacopia Trail connects to a trail system in an areas referred to as "Drop 31". Drop 31 is located east of North Shore and the Salton Sea. There are numerous designated trails in this area as well as a number of non-designated trails that need to be inventoried and either improved or closed. Due to the high level of use, BLM is eager to cooperate with the County to improve this area by

building appropriate facilities, marking the trails and improving signage to increase OHV enjoyment.

2. **APPROVAL OF MINUTES** (Upon completion of field trip and return to BLM office)

Minutes from the May 17, 2007 were deferred to the June meeting since a quorum was not present after the tour.

3. **PUBLIC COMMENTS**

No public comments

4. **ADMINISTRATIVE MATTERS**

No administrative matters were discussed

5. **COMMISSION WORK SESSION**

The presentation for the Board of Supervisors was reviewed and discussed by the remaining Commission members (Jason Fried had to leave after the tour) and County staff. Various suggestions were made. Chairman Migliore agreed to work on the presentation and incorporate the various suggestions. He will present the revisions at the July meeting. Staff will take the final presentation and have the graphics artist polish it for the Board. A presentation on the progress of the OHV Commission in September is expected.

The meeting was adjourned at 3:30 PM. The next meeting will be July 19, 2007 at the County Administrative Building at 10:00 AM.



RIVERSIDE COUNTY OFF-HIGHWAY VEHICLE COMMISSION

• Frank Heyming • Larry Riddle • Anthony Migliore • Brian Nestande • Meg Grossglass •

MINUTES

Thursday, July 19, 2007 – 10:00 a.m.
RIVERSIDE COUNTY
OFF-HIGHWAY VEHICLE COMMISSION
4080 Lemon Street
5th Floor Conference Room D
Riverside, CA 92502-1409

Members present:

Meg Grossglass
Frank Heyming
Brian Nestande
Larry Riddle

Member absent:

Anthony Migliore

Staff present:

Jim Fagelson
Jerry Jolliffe
Donna J. Stevens

CALL TO ORDER – ROLL CALL

In the absence of a Chairperson or Vice-Chairperson, Jerry Jolliffe called the meeting to order at 10:00 a.m. and then asked everyone to introduce themselves and give a little bit about themselves since the newest member of the Commission, Frank Heyming, had just been appointed by the First District and did not know the other members of the Commission.

1. APPROVAL OF MINUTES

May 17, 2007 Minutes – Larry Riddle made a motion to approve the minutes and Meg Grossglass seconded the motion. Minutes were approved as presented.

June 21, 2007 Minutes – A motion was made to table these minutes until the August 16, 2007 meeting.

2. PUBLIC COMMENTS

None

3. ADMINISTRATIVE MATTERS

Jim Fagelson stated that Jason Fried has resigned due to per personal reasons, he has moved out of state, and Frank Heyming is his replacement.

Nomination was made by Larry to nominate Frank Heyming for Vice- Chairperson. Frank stated that he thinks that someone should be nominated that has more experience with the committee. This item was tabled until the August 16th meeting.

Speaker Schedule for August 16, 2007 meeting to discuss the issues related to the DeAnza and Laborde sites.

Paul Frandsen, General Manager, Regional Parks and Open Space District

Marc Brewer, Park Planner, Regional Parks and Open Space District

Darcy Kuenzi, Supervisory Legislative Assistant, 5th Supervisorial District

Review Presentation for the Board of Supervisors

It was agreed that all OHV members try to attend the Board meeting. One of the issues is when to present this to the board. Meg stated that Anthony would like it to be after the September OHV Commission meets, which is September 20, 2007.

Jim Fagelson displayed and spoke about a power point presentation that both Meg and Anthony had worked on.

The Overview consisted of six (6) items – (Slide 1):

- Commission Organization
- Planning Phases/Guiding Timeline
- Phase I
- Funding
- Varying OHV Recreational Opportunities
- Summary and Goals

Commission Organization consists of five (5) members appointed by the Board of Supervisors – (Slide 2):

Purpose of Commission consists of three (3) items – (Slide 3):

- Identification of sites for off-highway vehicle parks, provide input on related site issues
- Assess the extent and range of use for candidate sites
- Provide guidance to County staff and decision-makers regarding outreach for education and information on off-highway vehicle use

Discussion was held regarding the tour by the BLM in June. Three sites were visited:

Fargo Canyon Road off Dillion Road has 640 acres owned by BLM, the terrain is fairly flat with access into Fargo Canyon and the Colorado River Aqueduct trails. The trails link to other trails maintained by the BLM that stretch almost to Blythe. Frank asked if there is signage to designate the trails. A discussion on the type and location of trail markers resulted.

The second site is off Red Cloud Road and Summit Road and includes several hundred acres about 50 miles from Blythe. The site is an old movie set that is currently used by

RV's and off-road vehicles. The area is well defined and has a variety of terrain. Trails in this area link to the Bradshaw Trail and the Salton Sea.

The third area is Drop 31 on the All American Canal, east of North Shore and the Salton Sea. The area is prone to flooding and currently has a difficult access. This area links to the Meccacopia Trails and the Bradshaw Trail and is heavily used by off-road and RV users. The discussion continued with the need for multiple use trails and coordination with CVWD for joint use areas. Box Canyon was also discussed; however, the fact that wilderness areas exist on both sides of the road, limits its use in a more intense manner.

Areas that were suggested for future sites included San Jacinto, the Temescal Canyon area south of Corona. There are several locations within areas that have been surface mined. Old mines might offer the best alternatives within urban areas.

A discussion on the De Anza and Laborde sites was initiated; however, further discussion was deferred until County staff could be present to provide current information. The staff is scheduled for the August meeting

Proposed Phases: (slide 4 – 6)

- Phase I
 - Identify types of landholders
 - Identify park requirements
 - Review/visit existing parks

- Phase II
 - Identify up to ten locations
 - Refine selections
 - Visit sites

- Phase III
 - Reduce list of prospective sites
 - Refine site requirements

- Phase IV
 - Report out to Board of Supervisors (BOS)

- Phase V
 - Continue to select new park locations
 - Review private park projects

Funding – (Slide 7):

Varying Off-Highway Vehicle Recreation Opportunities
Motorcross Track (Slide 8)
Rock Crawling Jeep and Trials Motorcycle (Slide 9):
Trail Riding Area – Slide (10);

Summary and Goals – Slide (11):

Summary

Next report includes options for future OHV facility. Ask the Supervisors to set aside funds for acquiring an OHV park.

Goals

To provide Riverside county families with safe and legal OHV riding areas that also enhance their appreciation of the natural environment.

Currently Riverside County has implemented many programs that are intended to protect sensitive habitats and ecosystems. Adding OHV parks to those efforts will only increase the environmental protection happening throughout the county

To decrease the habitat damage currently occurring because of the proliferation of illegal trails and tracks.

Provide precision OHV planning to give Riverside County families the ability to recreate together and teach their children to appreciate and respect the natural environment.

To create multiple OHV parks and in the process create more open space for the resident of this county.

Jerry stated that he thought that a hard copy of the power point presentation should be provided to all board members. Frank Heyming also requested a hard copy.

4. OPEN DISCUSSION

Meg stated that she wanted to talk to Kristi Lovelady and discuss her decision-making process when looking at potential OHV sites. Maybe she can come to one of our meetings. Jerry lead a discussion regarding maps and overlays. Kristi may have some maps that we can have. The Commission felt that they had talked to a lot of guests about specific areas, now the Commission needs to focus on areas that would help develop their goals.

Mr. Jolliffe suggested that the Commission make a checklist of what type of activities they want, then look at spaces that would accommodate the activities. The activities should include both warm and cold seasons. Staffing and maintenance costs should also be considered.

5. LUNCH

6. ADJOURNMENT

Meeting was adjourned at 12:10 p.m.



RIVERSIDE COUNTY OFF-HIGHWAY VEHICLE COMMISSION

• Frank Heyming • Larry Riddle • Anthony Migliore • Brian Nestande • Meg Grossglass •

MINUTES

Thursday, August 16, 2007 – 10:00 a.m.
RIVERSIDE COUNTY
OFF-HIGHWAY VEHICLE COMMISSION
4080 Lemon Street
5th Floor Conference Room D
Riverside, CA 92502-1409

Members present:

Meg Grossglass
Anthony Migliore

Members absent:

Frank Heyming
Brian Nestande
Larry Riddle

Staff present:

Jim Fagelson
Jerry Jolliffe
Donna J. Stevens

Guest Speakers:

Marc Brewer
Paul Frandsen
Darcy Kuenzi

1. APPROVAL OF MINUTES

Minutes from June 21, 2007 and July 19, 2007 were deferred to the September 20, 2007 meeting since a quorum was not present.

2. PUBLIC COMMENTS

Members of the public were not present.

3. GUEST SPEAKERS

Paul Frandsen, General Manager, and Marc Brewer, Park Planner, both from Regional Parks and Open-Space District gave an overview of the 30 years of history of the DeAnza Cycle Park. The whole DeAnza site is about 3,000 acres; however, the OHV site was only about 1/3 of the area (1,100 acres) and was actually owned by Waste Management. The original purpose for the site was for waste management; however once the site was no longer needed for waste management, it was sealed and capped and reverted to the Parks Department. The portion operated by Doug Hall was approximately 200 acres of which only 60 acres was actually used for the OHV park.

The 3,000 acres were originally acquired using both OHV funds and land swapped with the Bureau of Land Management (BLM). Due to land originally owned by BLM being part of the park, only 2,000 acres were funded by OHV.

There were several attempts to expand the riding opportunities on the 3,000 acres at various periods of time. The original proposed facility was over 400 acres with casual riding tracks, hill climbs, competitive tracks, trails, and sand rail tracks. The park was to try and provide something for every segment of the community. Each attempt was met with obstacles. These obstacles included an interchange on the 60 Freeway, increasing numbers of residents living near the site in Beaumont, and insurance issues which became a greater issue when the original operator vacated the site.

Within a period of five (5) years, the concessionaire had had several significant accidents, serious quadriplegic accident and was faced with similar liability lawsuits. Since Doug Hall was not a corporation, he was unable to survive the affects of the lawsuits. Anthony Migliore stated that it was important for the Commission to know what went wrong or what went good.

There were four (4) grants issued to Riverside County over the period of the DeAnza project. The first two grants were issued in the late 1970s and were used as seed money to find other funds. A grant was received in the amount of \$6.3 million dollars so that Riverside County could develop a state OHV facility in the late 1970s. Due to the size of the grant awarded to Riverside County, legislation was required that dictated how the money was to be used: acquisition, environmental documentation, planning and construction. The grant was to used to reimburse funds that the County expended on OHV park development. To date, approximately \$3.8 million has been drawn down.

In 1988, an attempt was made to salvage the OHV park. A consultant was hired to review the project. Some of the issues were sizeable: the soil in the Badlands are not conducive to heavy traffice to to dust and landslide potentials; fire access issues sue to a single ingress and egress; the property was still under the ownership of Waste Management; \$3.8 million had already been spent on acquisition, two rounds of CEQA documentations and a master plan. Increased environmental concerns were being raised and people started to move in to the surrounding areas, into residential developments within Beaumont and the County. What had been a rural area was suddenly becoming a significant residential area.

The current major issues fall into two categories:

- Oak Valley Specific Plan is rapidly developing, generating thousands of people within close proximity. People were concerned about the noise from the OHV park.
- The Multi-Species Habitat Conservation Plan (MSHCP) is in place and the area has pockets of endangered and threatened species within the park area.

The area has now been designated Norton Younglove Reserve. After the name change, the County got a call because the State saw the Reserve listed in the Thomas Bros.

Guide. The issue was that there was never any concurrence or approval from the state to rename the area or to use the funds for a general park. Frandsen stated that if you read the way the money was allocated for the purchase and development of the land -- it's gray. It doesn't specifically say that it has to be all OHV. Commissioner Grossglass stated that in the guiding documents of the OHV trust fund, it says that that money can't be spent in any other way.

Jerry Jolliffe suggested that the committee find four (4) or five (5) park sites even if they are smaller to present to the BOS as the best options to look at.

Jim Fagelson stated that the presentation will be at the BOS meeting on Tuesday, October 2, 2007. Commissioner Grossglass will be in charge of bringing the BOS members a little trinket.

Jim Fagelson went through the slide presentation again with all of the changes. Chairman Migliore wants to appoint a sub-committee to refine the presentation to the Board and suggested that a hard copy of the presentation be available for all BOS members.

Jerry Jolliffe suggested that David Jones be invited as a guest speaker for the September 20, 2007 meeting.



RIVERSIDE COUNTY OFF-HIGHWAY VEHICLE COMMISSION

• Frank Heyming • Larry Riddle • Anthony Migliore • Brian Nestande • Meg Grossglass •

10:00 A.M.

September 20, 2007

MINUTES

Thursday, September 20, 2007 - 10:00 A.M.
Riverside County Administrative Center, 2nd Floor Annex

Members Present

Members Present:

Anthony Migliore
Meg Grossglass
Frank Heyming
Brian Nestande
Larry Riddle

Staff Present:

Jim Fagelson
Jerry Jolliffe
Damian Meins
Donna J. Stevens

1. JUNE 21, 2007, JULY 19, 2007 AND AUGUST 16, 2007 MINUTES

Motion: That the June 21, July 19 and August 16, 2007 meeting minutes be approved.
Discussion: None
Status: All minutes were approved as presented.

2. PUBLIC COMMENTS None

3. GUEST SPEAKERS

David L. Jones, Chief Engineering Geologist

Discussion: Mr. Jones brought maps which depicted the mines of Riverside County. He stated that the County uses the Surface Mining and Reclamation Act (SMARA) Ordinance #555 to guide their work. He explained that areas on the map in red depicted active surface mines and the areas in green represented reclaimed mines. Meg Grossglass and David Jones discussed what "reclaimed" mines really meant. These are the mines where mining has been completed, the conditions of approval have been completed under the entitlement and the area has been re-vegetated. The committee was interested in whether or not reclaimed mines could be used for OHV. Mr. Jones replied in the affirmative. Jerry Jolliffe suggested that the committee take the mining maps and overlay them with criteria and layers for potential OHV parks.

The active surface mines are usually mined in phases. Jerry Jolliffe suggested that as Phase I of the mine was completed; perhaps the OHV committee could look into using Phase I for OHV as Phase II was being mined. Discussions on future use of the mining areas ensued.

Robert Yanik, MDMG Consulting, Canyon Lands, LLC Owners of Temecula Ranch

Discussion:

Mr. Yanik brought a map of the 515 acre (300 acres of this is open-space) Temecula Ranch, which proposes a 12-acre lake with picnic areas, fishing, hiking, cycling, day camping, paintball, Boy Scout, Boys and Girls Club and other family-oriented activities.

Mr. Yanik spoke about trying to get this property approved since 2002. In the beginning there was a CUP hearing which was continued off calendar and a staff report was issued. Code Enforcement later sited the property for several violations, but these violations were found to be in error and were withdrawn. The discussion continued with regards to the various protected species on-site: Arroyo Toad, Stephens Kangaroo Rat and the L.A. Pocket Mouse, and proposed conservation requirements established by the MSHCP and the individual criteria cells that cover the property.

4.

ADMINISTRATIVE MATTERS

Discussion:

ELECTIONS

Elections were held for Vice-Chair. Meg Grossglass was nominated and approved. Next an Ad-Hoc Subcommittee to review maps was nominated and approved. They are Larry Riddle and Meg Grossglass.

WEBSITE

Anthony Migliore stated that the OHV website needs to be updated. He and Meg Grossglass are concerned that we don't have any public participation at these meetings. Jerry Jolliffe suggested that he and Jim Fagelson get together with Nancy Romero, Clerk of the Board, to look into getting the web updated.

REVIEW OF PRESENTATION FOR THE BOARD OF SUPERVISORS

Jim Fagelson reviewed the power point presentation with the committee and he will incorporate the revisions into the presentation including a "pie chart" of the finances. All committee members and staff have committed to attend the BOS Meeting on Tuesday, October 2, 2007 probably in the a.m. Anthony Migliore requested that a hard copy of the power point be made available to the BOS so they can view it up close and use it to make notes on. Anthony Migliore also brought up the fact that three (3) of the top five (5) motorcross competitors from the X Games currently reside in Riverside County.

5.

OPEN DISCUSSION

Jerry Jolliffe suggested to the newly appointed Ah-Hoc Subcommittee that they meet directly after the BOS presentation on October 2, 2007 to start working on the maps.

Jim Fagelson is going to try to get a speaker from EPD for our October 18, 2007 meeting.

6.

LUNCH

7.

ADJOURNMENT

Meeting was adjourned at 1:12 p.m.



RIVERSIDE COUNTY OFF-HIGHWAY VEHICLE COMMISSION

• Frank Heyming • Larry Riddle • Anthony Migliore • Brian Nestande • Meg Grossglass •

10:00 A.M.

October 18, 2007

MINUTES

Thursday, October 18, 2007 - 10:00 A.M.

Riverside County Administrative Center, Conference Room 5D

Members Present

Members Present:

Anthony Migliore
Meg Grossglass
Frank Heyming
Brian Nestande
Larry Riddle

Staff Present:

Jim Fagelson
Jerry Jolliffe
Donna J. Stevens

Visitors Present:

Ken Baez

1.

APPROVAL OF MINUTES

Motion:

That the September 20, 2007 meeting minutes be approved.

Discussion:

None

Status:

Minutes were approved as presented.

2.

PUBLIC COMMENTS

None

3.

GUEST SPEAKERS

Greg Neal, Deputy Director, Environmental Programs Department (EPD), County of Riverside

Discussion:

Anthony Migliore asked Mr. Neal to provide information tailored to the needs of the OHV Commission. The Board of Supervisors (BOS) want the OHV Commission to research, plan and execute off-highway vehicle parks within the county for riders to have an opportunity to recreate and to get the illegal riding off private and public lands. Jim Fagelson spoke about Mr. Neal's responsibility area, which is strictly the Western part of the county, which is from the San Jacinto Mountains west. The Coachella Valley has a new MSHCP, which is administered by the Coachella Valley Association of Governments. That plan has different requirements and a different process for the determination of impacts.

The MSHCP was designed to protect up to 146 species (approximately 27 listed species). The plan encompasses 1.2 million acres in the Western part of Riverside County. Riverside County has 7300 square miles and is similar in size to the state of New Jersey. As developments started to impact federally-listed species, it became clear that a more global approach was necessary to try to address the impacts on a regional basis instead of being reactionary on a one-to-one basis.

Jerry Jolliffe talked about how the need for a MSHCP became critical with the listing of the California Gnatcatcher and then the Quino Checkerspot Butterfly, in January 1997.

Mr. Neal stated that in addition to existing public and quasi public lands, approximately 153,000 acres of privately-owned lands are required for inclusion in the MSHCP conservation area, so that long-term survival of the 146 species could be assured.

The Habitat Acquisition and Negotiation Strategy (HANS) provides an early evaluation of properties for which a development application is intended to be filed, as well as it allows a determination of properties needed for the MSHCP Conservation Area. It ensures fair and equitable treatment to all property owners and allows loss of covered species for projects outside of the MSHCP Conservation Area. The MSHCP assumes that 41,000 acres will be included within the MSHCP Conservation Area through the normal development review process.

The County's jurisdiction only applies to unincorporated areas of the county, not other governmental entities. All other agencies are partners with the County in the plan, i.e., BLM, Fish and Wildlife Service, Fish and Game, Cal-Trans, etc. They are all permittees under the plan. They have adopted the plan and agreed to abide by the plan.

The MSHCP is governed by the Joint Powers Authority (JPA). There are fifteen (15) jurisdictions within the JPA. They are comprised of fourteen (14) Riverside Cities in the western area plus one (1) for Riverside County. The JPA is managed by the Regional Conservation Authority (RCA), which is comprised of a nineteen (19) member board, which is five (5) County BOS plus one (1) member from each of the fourteen (14) cities. The Joint Project Review allows for the RCA to review projects and provide guidance to each jurisdiction on MSHCP compliance.

The OHV Commission thanked Mr. Neal for an excellent presentation.

4.

ADMINISTRATIVE MATTERS

Discussion: Jerry Jolliffe and Jim Fagelson met with Nancy Romero, Clerk of the Board, on October 11, 2007.

Status: The website now reflects the link for the Off-Highway Vehicle (OHV).

Discussion: At the September 20, 2007 meeting of the OHV Commission, an Ad-Hoc Subcommittee was formed to review map requirements. The committee members are Meg Grossglass and Larry Riddle. They met on October 15, 2007 to discussed mapping requirements.

Status: The maps are currently in process and are being developed by GIS.

5. OPEN DISCUSSION

6. LUNCH

7. ADJOURNMENT

Meeting was adjourned at 12:44 p.m.



RIVERSIDE COUNTY OFF-HIGHWAY VEHICLE COMMISSION

• Frank Heyming • Larry Riddle • Anthony Migliore • Brian Nestande • Meg Grossglass •

10:00 A.M.

November 15, 2007

MINUTES

Thursday, November 15, 2007 - 10:00 A.M.

Riverside County Administrative Center, Conference Room 5D

Members Present

Members Present:

Anthony Migliore, Chair
Meg Grossglass, Vice Chair
Frank Heyming
Larry Riddle

Members Absent:

Brian Nestande

Staff Present:

Jerry Jolliffe
Donna J. Stevens

Staff Absent:

Jim Fagelson

1. APPROVAL OF MINUTES

Anthony revised the status sentence on the second page referring to the website to read that the link "should be" up. Meg made a motion to approve the October 18, 2007, meeting minutes. The minutes were approved as revised.

2. PUBLIC COMMENTS - None.

3. GUEST SPEAKER - None.

4. ADMINISTRATIVE MATTERS - None.

5. OPEN DISCUSSION

Base Maps – Jerry presented the base map for Western Riverside County which was broken up in two segments, Western County and Coachella Valley.

Zoning Ordinance – Jerry states that Special Counsel determined there are legal pitfalls in developing a new ordinance and that it's not a good idea to abandon the old one. Instead, the County decided to update Ordinance 348 by changing the language to match the General Plan.

General Plan (GP) – Jerry states that it can be amended only every 5 years. The Plan was approved in 2003; it is being updated in 2008. By State law, zoning should be consistent with the GP; however, due to the complexity of the GP and the need to update the Zoning Ordinance before zoning consistency can take place, the 5-year update of the GP has started before zoning consistency could be completed.

Overlays – There are 3 overlays. The categories of are Wilderness Areas and Nature Preserves, Military, State Lands, Federal Lands, National Forests. It was pointed out that the Nature Conservancy Santa Rosa Plateau Preserve shows up as “County Lands” and needs to be changed.

Mining Land – Closing mines may not want to spend millions of dollars to fix it up but instead to turn it over to OHV. Jerry stated that Planning will be doing an inventory and will put the information on a separate layer. Jerry stated that mine sites were an excellent opportunity. They are perfect for the following reasons: they have existing disturbances, activities have disrupted the area for decades and may have annoyed the neighbors, the natural landscape has been completely disturbed by definition and future rehabilitated is required to reuse the area for a different use, there are only so many golf courses you can make out of an old mine. OHV Parks are recreational uses that can be very compatible for the area.

OHV Lumping - Lumping all OHV together doesn't work. The maps should identify potential uses for all forms of OHV activities. If there are activities that are not met by other local and State parks, provides an opportunity for Riverside. Future maps should circle all the areas on the map where there are legitimate contenders and make lists of all the identifying groupings.

Buffers – The landlocked areas can be great as buffer opportunities built-in around whatever park is selected. Identify areas for potential OHV parks, look at a 1-mile or 2-mile radius area around them and then do a matrix on a number of different factors. Enlarge each one and overlay the different categories. Then do a matrix on the different factors.

Site Evaluation – The state did a report on various areas with site considerations attached to each. Criteria listed include terrain, access, ownership status, biological resources, MSHCP, sensitive receptor (annoyances), and ability to manage the property. A similar analysis should be produced in a document that can be given to the Planning Commission and the BOS.

Lot Access – Since 1972, there have been requirements under the Subdivision Map Act that that requires access to all newly created parcels. There are a lot of lots, especially in the more remote areas of the county, that don't have access to them.

Subcommittee Staffing – The subcommittee should meet before the next OHV meeting to go over site selection. Staff is requested to help the subcommittee. Jerry states that Jim Fagelson and GIS is available to help and suggests using a rolling method to complete the work. Jerry tasks the subcommittee to get the maps together, the blow ups and the more detailed reports for those areas and to do one area at a time.

Aerial Photograph – An aerial photograph of the county was requested. Instead, Jerry suggests taking each area of the map, blow it up and then use an overlay.

Known Riding Areas – Illegal riding as a whole in the county is destroying more acres of wildlife than if we designate some areas to control. Jerry suggested looking at large areas where people are already riding and pick good candidates that have other workable factors like ones with buffers around them.

Defining Boundaries – Park boundaries can be delineated using fencing and signage to control the borders with buffer areas that have been set aside as open space.

Cooperative Agreements – It was suggested that the County enter into a Joint Use MOU with the Forest Service. The Commission is interested in making sure the trails are signed and patrolled and properly managed.

Jurupa - Perimeter of the National Forest – Review the 100-mile perimeter of the San Jacinto National Monument to determine all trail entrances and all areas that might be usable.

Satellite Pictures – Google Earth was suggested as a free service.

San Timoteo Canyon – Frank Heyming stated that the Land Conservancy is trying to set up a state park in San Timoteo Canyon. Eight thousand acres have already been purchased; they're trying to buy another 2,000 acres. Money is being sought to finish it. Mr. Heyming is unsure if there would be an area in San Timoteo Canyon that would lend itself very well to OHV.

Model Use – Jim Fagelson met with Mark Balys and came up with lists of different criteria or categories and use Temecula Ranch as a model. This matrix would identify and evaluate all area that are under consideration. Commission comments are requested as to categories that were left out, how it was presented, was it useful to you, etc.

Systematic Approach – Specific areas determined as potential park locations can be reviewed in greater detail using an aerial photo base, determine MSHCP issues, existing surrounding land uses that might conflict with a proposed park. Once a site is determined, look in greater detail as to how the site meets each developed criteria.

The Wilderness Bill – Meg wonders if it's appropriate for this commission to take a stand on a Wilderness Bill (Congresswoman Mary Bono and Senator Barbara Boxer introduced legislation providing for conservation of lands in Riverside County. Entitled the "California Desert and Mountain Heritage Act," H.R. 3682 preserves desert, forest, and river areas throughout California's 45th Congressional District). Meg states that there are some areas of the Bill that cuts off some extremely important historic trails like the Bradshaw Trail. Meg is disappointed that Mary Bono hasn't asked any of the local people their opinions on the bill. Meg states that protection language can be added into these bills and suggests a letter be written requesting to include the OHV Commission in the process. As Chair, Anthony will sign a letter addressed directly to Mary Bono that states who we are and what we're trying to do and how we want to work together with their Wilderness Proposal. The letter should read, "We hear Riverside County is in the process of finding and developing OHV parks, initial indications are that there might be some overlap of issues with this. We're very interested in having a comprehensive understanding of all aspects of this proposal and how it will be implemented. We respectfully invite a representative to brief the OHV Commission on this and would like someone to contact Jerry Jolliffe for scheduling." Meg suggests the letter be faxed to Bono's local office in Palm Springs; the District Director is Marc Troast.

6. LUNCH

7. ADJOURNMENT

Meg made a motion to adjourn the meeting. The meeting was adjourned at 11:40 a.m.



RIVERSIDE COUNTY OFF-HIGHWAY VEHICLE COMMISSION

• Frank Heyming • Larry Riddle • Anthony Migliore • Brian Nestande • Meg Grossglass •

10:00 A.M.

December 20th 2007

MINUTES

Thursday, December 20th 2007 - 10:00 A.M.
Riverside County Administrative Center, Conference Room 5D

Members Present

Members Present:

Anthony Migliore, Chair
Meg Grossglass, Vice Chair
Brian Nestande

Members Absent:

Larry Riddle
Frank Heyming

Staff Present:

Jim Fagelson
David Jones
Ebony McGee
Lena Horne

Staff Absent:

Jerry Jolliffe

1. APPROVAL OF MINUTES

Anthony made a motion to approve the November 15, 2007, meeting minutes. Meg seconded his motion and everyone voted in favor of approval.

2. PUBLIC COMMENTS

Deputy Penning and Deputy Bartlett both of the Riverside County Sheriff's department, OHV Division introduced themselves and began to explain the infrastructure of their division at the request of Commissioner Migliore. Deputy Bartlett lead in explaining that they are a fulltime team which is apart of The Special Enforcement Bureau. Their department consists of (8) Deputies and (1) Sergeant. Their schedules consist of 30 hours out of a 40 hour workweek. They handle county issues only, which excludes the cities. The Sheriff's department recently wrote their own grant that was approved, giving them the funds to purchase their own OHVs. When individuals are pulled over for riding their vehicles in an unapproved area, they are cited with the County Code Section 10.12.010, which is riding on private/public land without consent. The code has a few exemptions which include, law enforcement, property owners, agents and anyone with permission to ride on private property.

Commissioner Migliore suggested that a discussion should take place at the next meeting in January in regards to setting up additional meetings in the evenings for the public to attend. These community meetings would be located in each one of the five districts taking (5) months to visit them all. The committee would still have their regular monthly meetings but he suggests having both types of meetings monthly.

Deputy Bartlett added that they would be willing to attend the community meetings. He suggests setting up a website so that the public may voice their opinion.

Commissioner Nestande addressed his concerns in regards to a website. He stated that once a website is set up, it would be necessary to find a full-time person to manage it and the county does not have funds for that type of function. He suggested that a web site may be appropriate at a later time.

3. **GUEST SPEAKER**

Katie Barrows, Director of Environmental Resources, presented a PowerPoint presentation which included details in regards to Participating Areas, Funding, Coachella Valley MSHCP Benefits – Environment, Coachella Valley MSHCP Benefits – Economic, Trails, Coachella Valley MSHCP & OHV use, Reserve Assembly, Public Land in 1996, and Coachella Valley MSHCP: Reserve Design. She ended her presentation referring anyone who would like to view the overall statement, planning documents, and other information to go to the Coachella Valley MSHCP website at www.cvmshcp.org.

4. **ADMINISTRATIVE MATTERS** - None.

5. **OPEN DISCUSSION**

The group viewed the maps available to discuss possible venues for the park. Commissioner Migliore stated that several small parks would be better than one large park. The parks should be a minimum of 500 acres and up to 1000 acres. Mines and the areas of Iron Door and Drop 31 were viewed on the map and discussed in greater detail. The group decided that it would be a good idea to find out who the contact person may be pertaining to mines so that they can find out what opportunities may be available. Commissioner Grossglass suggested compiling a list of possible areas with a minimum of 100 -150 acres would be a good idea.

Commissioner Migliore announced that he had to leave the meeting early. The meeting may continue but nothing will be able to be voted on today. Katie Burrows also had to leave the meeting and on her way out, she added that the Coachella Valley Association of Governments (CVAG) also has an OHV committee. She stated that the group may contact them to have a possible joint meeting in the future.

Commissioner Grossglass continued the meeting and asked for the information on sites that were discussed last month. Jim let Meg know that Jerry was working on that project and is out ill today.

3. **LUNCH**

4. **ADJOURNMENT**

The meeting was adjourned at 12:00 p.m.



RIVERSIDE COUNTY OFF-HIGHWAY VEHICLE COMMISSION

• Frank Heyming • Larry Riddle • Anthony Migliore • Brian Nestande • Meg Grossglass •

10:00 A.M.

January 17, 2008

AMENDED MINUTES (2/21/08)
Thursday, January 17, 2008 - 10:00 A.M.
Riverside County Administrative Center, Conference Room 5D

Members Present

Members Present:
Anthony Migliore, Chair
Meg Grossglass, Vice Chair
Brian Nestande

Members Absent:
Larry Riddle
Frank Heyming

Staff Present:
Jim Fagelson
Renee McMillon

Staff Absent:
Jerry Jolliffe

1. APPROVAL OF MINUTES

Commissioner Grossglass made a motion to approve the December 20, 2007 meeting minutes. Commissioner Migliore seconded the motion and everyone voted in favor of approval.

2. PUBLIC COMMENTS

None

3. GUEST SPEAKER

None

4. ADMINISTRATIVE MATTERS

Mr. Jim Fagelson assembled five different maps and overlays with ownership patterns of the following possible sites: Temescal Canyon, Lake Skinner, Diamond Valley, Drop 31 and the Badlands. The group reviewed and discussed the acreage, buffers and conservation requirements of each site.

Temescal Canyon

The group reviewed and discussed Temescal Canyon. Commission Migliore suggested setting up public meetings for information and awareness. Commission Nestande suggested not having public meetings until contact has been made with site owners.

Action Item:

1. Commissioner Heyming should talk to the First District concerning the possibility of the Staff contacting Waste Management regarding Temescal Canyon site.
2. The First District should inquire of Corona Clay about using or leasing the Temescal Canyon site.

Lake Skinner:

The group reviewed and discussed the Lake Skinner site. The group discussed all the different activities and designation that this land would afford. Jim suggested that each member speak with their Supervisor to gain their support.

Action Item:

Commissioner Migliore should contact Supervisor Stone's staff regarding who should contact Metropolitan Water District regarding the use of this land.

Diamond Valley:

The group reviewed and discussed the Diamond Valley site. Commissioner Migliore suggested combining this site with the Lake Skinner. Commissioner Grossglass suggested setting this site up like Hungry Valley State Park. Commission Grossglass stated that she has opened a conversation with California Wilderness Coalition and is expecting some support from them. The group agrees that this is a good possibility.

Action Item:

Jim to contact Metropolitan Water District regarding having a representative from Metropolitan attending next months meeting.

Drop 31:

The group reviewed and discussed the Drop 31 site. Since a portion of the area is owned by the Bureau of Land Management (BLM), the intermediate properties would be a good site to purchase. Commissioner Migliore suggested subleasing the property and charging for entrance to the park. The group agrees this is a good possibility.

Action Item:

1. Commissioner Nestande is to contact the owner of the private property.
2. Commissioner Grossglass to contact NOHVCC (National Off-Highway Vehicle Conservation Council) regarding contracting out the management of the site.

The Badlands:

The group reviewed and discussed the Badlands site. Jim told the group that Shea Homes owns the site under review and that other properties in the area are owned by BLM and the Regional Conservation Authority (RCA). It was mentioned that Shea Homes may be interested in selling their land. The group agrees this is a good possibility.

Commissioner Grossglass reminded the group that they are to concentrate on "designated trail system" as opposed to "open ridding" per the California Wilderness Coalition.

Action Item:

1. Commissioner Grossglass to contact Supervisor Ashley's office regarding this site.
2. Jim will have the maps available for discussions with the various Supervisor Offices.

5. **OPEN DISCUSSION**

Jim informed the group that this does not include the site near Blythe. It was discussed that additional contact with BLM should take place to ascertain their continued interest in joint development. Commissioner Migliore inquired as to the status of the possible mining sites that Dave Jones was to look into. Dave Jones was asked to have a list of potential mining sites available for the next meeting.

Jim stated he has contacted Congresswoman Bono-Mack's Office concerning the new wilderness legislation. While a representative from Bono-Mack's office can not be available to present the legislation, after a review, the legislature did not appear to impact any of the areas under discussion.

Commissioner Migliore stated that he had locations for meetings and requested that everyone research locations as well.

The group agrees that Temescal Canyon is the most challenging of the sites.

Action Item:

1. Jim to inquire of Dave Jones regarding mining sites.
2. Each member to contact their Supervisor and set meetings and include Jim where he will bring all the maps.
3. Jim to talk to Planning Director as to funds for additional meetings. Planning Department is currently paying all expenses.

6. **LUNCH**

7. **ADJOURNMENT**

The meeting was adjourned at 12:00 p.m.

8. Our next meeting will be Thursday, February 21, 2008, at 10:00 a.m..



RIVERSIDE COUNTY OFF-HIGHWAY VEHICLE COMMISSION

• Frank Heyming • Larry Riddle • Anthony Migliore • Brian Nestande • Meg Grossglass •

10:00 A.M.

February 21, 2008

MINUTES

Thursday, February 21, 2008 - 10:00 A.M.

Riverside County Administrative Center, Conference Room 5D

Members Present

Members Present:

Anthony Migliore, Chair
Meg Grossglass, Vice Chair
Larry Riddle
Frank Heyming

Members Absent:

Brian Nestande

Staff Present:

Jim Fagelson
Renee McMillon

Staff Absent:

Jerry Jolliffe

Board of Supervisors:

Darcy Kuenzi, Legislative Assistant

1. APPROVAL OF MINUTES

Commissioner Migliore made a motion to approve the January 17, 2008, meeting minutes as amended as follows:

Minutes of January 17, 2008, Number 4, Drop 31, paragraph 1 states "The group reviewed and discussed the Drop 13 site" is amended to state "The group reviewed and discussed the Drop **31** site".

Commissioner Grossglass seconded the motion and everyone voted in favor of approval.

2. PUBLIC COMMENTS

Legislative Assistant, Darcy Kuenzi from Supervisors Ashley's office was present in order to review site selection criteria and proposed timeline for the completion of the Commission's tasks.

3. GUEST SPEAKER

David Jones – Ebony McGee, Contract Planner for the County of Riverside attended in place of Mr. Jones who was on leave. Commissioner Migliore informed Ms. Kuenzi of the group's idea to use mining areas that have already been disturbed and are in need of reclamation. It is assumed that the owners would be open to leasing the mining sites

to the County with the understanding that the OHV Commission would reclaim the mine. Ms. McGee briefly spoke on mines that were in the reclamation phase. Mines that are either in reclamation or about to begin reclamation are as follows:

1. Prado Pit, RP113, (owned by Dan Corp) Rock Crushing. District 2
2. Juniper Flats, (owned by Cemex) concrete and Rock. District 5
3. Dillon Road, (owned by Yeager)
4. Thousand Palms, (owned by Yeager)

4. **ADMINISTRATIVE MATTERS**

Group discussed current status of prospects and what the next steps are going to be. It was discussed that the Commission needs to finish the first phase by June 30, 2008, by making recommendations to the BOS as to locations of possible sites. The next phase would be determined by the BOS as to the direction the Commission will take. The Commission decided that a 2- 3 hour workshop for the Supervisors' staff should be scheduled for the April Commission. It was suggested to revisit the previous reports and "fine tune" them.

The Commission reviewed and further discussed sites in the Badlands. The Commission suggested renaming the Badlands to "Jackrabbit Trails". Various property owners within the Badlands are willing sellers with several having access to Gillman Springs Road. Further investigation of these sites as well as other mining sites was suggested.

6. **LUNCH**

7. **OPEN DISCUSSION**

Jim reminded the group of the original board Resolution:

1. Identify sites
2. Input on related site acquisition issues
3. Extend the range of use (what type of ridership is on each site)
4. Provide advice to county staff and decision makers as to public outreach.

Step I

1. Research who is in opposition to the project.
2. What support is there from Environments groups?
3. What support is there from OHV?
4. Select top 12 sites
5. Task team to talk to property owners.
6. Report to the Board

Step II

Board to send out to the Public. Authorize Commission to conduct Public Meetings.

Step III

Top sites chosen.

Step IV

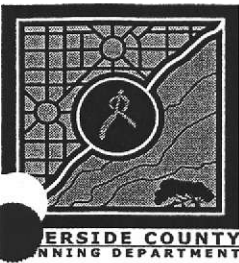
Research who is going to back project, environmental review, build, and operate?

Action Items:

1. Darcy to talk to manufacturers and contact USA Management and 1st District to contact USA Management, Corona Clay.
2. Darcy to set up meeting with Commission Grossglass regarding contacting Dan Silver and Sierra Club.
3. Jim Fagelson to refine maps for March meeting.
4. Schedule a presentation to the Board Staff members at the April Meeting.
5. Darcy to talk Supervisor Ashley regarding "Jack Rabbit Trail".
6. Jim to talk to Mark Balys about providing update on OHV Ordinance and Noise Ordinance.
7. Everyone to start thinking about the presentation to the Board and who would give the presentation.
 - a. Commission Grossglass agreed to work on outreach.
 - b. Commission Riddle agreed to demonstrate maps.
 - c. Commission Heyming proposed to use the General Plan to show how an OHV site would work with the existing Plan designations.

8. ADJOURNMENT

The meeting was adjourned at 11:55 p.m. The next meeting will be Thursday, March 20, 2008, at 10:00 a.m..



RIVERSIDE COUNTY OFF-HIGHWAY VEHICLE COMMISSION

• Frank Heyming • Larry Riddle • Anthony Migliore • Brian Nestande • Meg Grossglass •

10:00 A.M.

March 20, 2008

MINUTES

Thursday, March 20, 2008 - 10:00 A.M.

Riverside County Administrative Center, Conference Room 5D

Members Present

Members Present:

Anthony Migliore, Chair
Meg Grossglass, Vice Chair
Frank Heyming

Members Absent:

Brian Nestande
Larry Riddle

Staff Present:

Jim Fagelson
Renee McMillon
Jerry Jolliffe

Guest Speaker:

Mark Balys

1. APPROVAL OF MINUTES

Commissioner Heyming made a motion to approve the February 21, 2008, meeting minutes. Commissioner Grossglass seconded the motion and everyone voted in favor of an approval.

2. PUBLIC COMMENTS

No Public representatives present. However, a phone call was received by Commission Grossglass from Kim Floyd as to status. Mr. Floyd was welcomed to the OHV Commission meetings.

3. GUEST SPEAKER

Mark Balys – An EIR for OHV Amendment was sent out for bid. The Firm ESA out of San Diego that has done work for the State Department has given a bid. ESA has sent a proposal and contract for \$111,500 and is in process. It is expected to be sent to the Board shortly. Once the EIR is complete in 9-12 months it will be sent back to the Board to be certified which may be included in the OHV language and added to the ordinance which sets the standards for OHV.

4. ADMINISTRATIVE MATTERS

- a. Group discussed putting sub-committees together and inform the board as to what each site will offer.

- b. Jim informed the group that the Pala Raceway in San Diego County is being developed. The raceway is expected to be open May 2008. Jim offered a fee schedule for the park.
- c. The group discussed the interest from the Cahullia Tribe. It was discussed that the tribe is interested; however, it would then be a private facility.
- d. Commissioner Heyming suggested March Air Force Base.
- e. The group discussed the new Prado Mine site.
- f. the group discussed the possibility of an Ariel view of the sites. It was suggested to rent a helicopter or inquire as to what is available through the County of Riverside, i.e., Fire Department, Police Department.

Action Item: Jim to contact JPA to get mapping of March Air Force Base for the next meeting.

Action Item: Jim to arrange vehicle and date for the group to visit each site.

Action Item: A sub-committee compiled of Commissioner Heyming and Commissioner Grossglass to meet with environmentalist groups to inform and take suggestion. Sub-committee to meet with Jim regarding presenting the process to come to conclusion.

Action Item: Jim to provide to the sub-committee with large maps, general small maps and help answer any concerns.

6. LUNCH

7. OPEN DISCUSSION

None

8. ADJOURNMENT

The meeting was adjourned at 12:05 p.m. The next meeting will be Thursday, April 17, 2008, at 10:00 a.m..



RIVERSIDE COUNTY OFF-HIGHWAY VEHICLE COMMISSION

• Frank Heyming • Larry Riddle • Anthony Migliore • Brian Nestande • Meg Grossglass •

9:00 A.M.

April 17, 2008

MINUTES

Thursday, April 17, 2008 – 9:00 A.M.

Riverside County Administrative Center, Conference Room 5D

Members Present

Members Present:

Anthony Migliore, Chair
Meg Grossglass, Vice Chair
Frank Heyming
Brian Nestande
Larry Riddle

Guest Speaker:

NONE

Staff Present:

Jim Fagelson
Renee McMillon
Jerry Jolliffe

BOARD OF SUPERVISORS STAFF:

Robert Caliva, 1st District
John Field, 2nd District
Olivia Barnes, 3rd District
Vern Lauritzen, 3rd District
Linda Griffin, 4th District
Darcy Kuenzi, 5th District

1. APPROVAL OF MINUTES

Commissioner Grossglass made a motion to approve the March 20, 2008, meeting minutes. Commissioner Nestande seconded the motion and everyone voted in favor of an approval.

2. PUBLIC COMMENTS

None

3. GUEST SPEAKER

None

7) **Temescal Canyon**

- ❖ 300 acres
- ❖ Owned by Corona Clay Company
- ❖ Currently in need of reclamation. Three unapproved OHV test tracks are on the property. Currently has significant environmental and code issues

f. BOS staff suggested presenting the OHV report at a workshop on June 16, 2008

6. **LUNCH**

7. **OPEN DISCUSSION**

None

8. **ADJOURNMENT**

The meeting was adjourned at 12:30 p.m. The next meeting will be Thursday, May 15, 2008, at 10:00 a.m..



RIVERSIDE COUNTY OFF-HIGHWAY VEHICLE COMMISSION

• Frank Heyming • Larry Riddle • Anthony Migliore • Brian Nestande • Meg Grossglass •

9:00 A.M.

May 15, 2008

MINUTES

Thursday, May 15, 2008 – 9:00 A.M.

Riverside County Administrative Center, Conference Room 5D

Members Present

Members Present:

Anthony Migliore, Chair
Meg Grossglass, Vice Chair
Frank Heyming
Brian Nestande

Members Not Present:

Larry Riddle

Guest Speaker:
NONE

Staff Present:

Jim Fagelson
Jerry Jolliffe
Renee McMillon

1. APPROVAL OF MINUTES

Commissioner Grossglass made a motion to approve the April 10, 2008, meeting minutes. Commissioner Nestande seconded the motion and everyone voted in favor of an approval.

2. PUBLIC COMMENTS

None

3. GUEST SPEAKER

None

4. ADMINISTRATIVE MATTERS

Refining Report to Board of Supervisors

Jim Fagelson briefed group on prepared report.

- ❖ Riverside County is ranked third in the state for the number of registered off-highway vehicles, behind Los Angeles (ranked first) and San Diego (ranked second) and ahead of San Bernardino (ranked fourth) and Orange County (ranked fifth). Mr. Fagelson requested information on the amount of money that is generated by riders of OHV's so that a ranking can be established. He wants to show that the lack of established OHV parks causes the County to lose income from the State.
- ❖ Commission to look at prepared report and give feedback from Commissioners within two weeks.

- ❖ Presenting the OHV report at a workshop on June 16, 2008. Power Point presentation to be prepared for Board of Supervisors.

5. LUNCH

6. OPEN DISCUSSION

None

7. ADJOURNMENT

The meeting was adjourned at 12:30 p.m. The next meeting will be June 19, 2008.



RIVERSIDE COUNTY OFF-HIGHWAY VEHICLE COMMISSION

• Frank Heyming • Larry Riddle • Anthony Migliore • Brian Nestande • Meg Grossglass •

10:00 A.M.

May 15, 2008

MINUTES

Thursday, June 19, 2008 – 10:00 A.M.

Riverside County Administrative Center, Conference Room 5D

Members Present

Members Present:

Anthony Migliore, Chair
Meg Grossglass, Vice Chair
Brian Nestande

Members Not Present:

Larry Riddle
Frank Heyming

Staff Present:

Jim Fagelson
Jerry Jolliffe
Renee McMillon

Guest Speaker:

NONE

1. APPROVAL OF MINUTES

Commissioner Nestande made a motion to approve the May 15, 2008, meeting minutes. Commissioner Grossglass seconded the motion and everyone voted in favor of an approval.

2. PUBLIC COMMENTS

None

3. GUEST SPEAKER

None

4. ADMINISTRATIVE MATTERS

Jim discussed the Report to the Board of Supervisors including the Form 11, Motion to the Board requesting for an extension of time until December 31, 2008. The group discussed the questions and concerns regarding the various sites. Jim also informed the group of the workshop to be held on September 15, 2008.

Jim spoke the group about the financing of the next phase and asked the group to seek outside funds from the State for the next phase of this project to talk to the board.

Jerry brought up that if there could be funds that the county could match it would help fund the project. A discussion regarding the process and possession of State granted funds.

5. LUNCH

6. OPEN DISCUSSION

None

7. ADJOURNMENT

The meeting was adjourned at 12:30 p.m. The next meeting will be July 17, 2008.



RIVERSIDE COUNTY OFF-HIGHWAY VEHICLE COMMISSION

• Frank Heyming • Larry Riddle • Anthony Migliore • Brian Nestande • Meg Grossglass •

10:00 A.M.

June 19, 2008

MINUTES

Thursday, June 19, 2008 – 10:00 A.M.

Riverside County Administrative Center, Conference Room 5D

Members Present

Members Present:

Anthony Migliore, Chair
Meg Grossglass, Vice Chair
Brian Nestande

Members Not Present:

Larry Riddle
Frank Heyming

Staff Present:

Jim Fagelson
Jerry Jolliffe
Renee McMillon

Guest Speaker:

NONE

1. APPROVAL OF MINUTES

Commissioner Nestande made a motion to approve the May 15, 2008, meeting minutes. Commissioner Grossglass seconded the motion and everyone voted in favor of an approval.

2. PUBLIC COMMENTS

None

3. GUEST SPEAKER

None

4. ADMINISTRATIVE MATTERS

Jim discussed the Report to the Board of Supervisors including the Form 11, Motion to the Board requesting for an extension of time until December 31, 2008. The group discussed the questions and concerns regarding the various sites. Jim also informed the group of the workshop to be held on September 15, 2008.

Jim spoke the group about the financing of the next phase and asked the group to seek outside funds from the State for the next phase of this project to talk to the board.

Jerry brought up that if there could be funds that the county could match it would help fund the project. A discussion regarding the process and possession of State granted funds.

5. LUNCH

6. OPEN DISCUSSION

None

7. ADJOURNMENT

The meeting was adjourned at 12:30 p.m. The next meeting will be July 17, 2008.



RIVERSIDE COUNTY OFF-HIGHWAY VEHICLE COMMISSION

• Frank Heyming • Larry Riddle • Anthony Migliore • Brian Nestande • Meg Grossglass •

10:00 A.M.

September 18, 2008

MINUTES

Thursday, September 18, 2008 – 10:00 A.M.
Riverside County Administrative Center, Conference Room 5D

Members Present

Members Present:

Anthony Migliore, Chair
Meg Grossglass, Vice Chair
Brian Nestande

Members Not Present:

Larry Riddle
Frank Heyming

Staff Present:

Jim Fagelson
Jerry Jolliffe
Renee McMillon
Wendell Bugtai

Guest Speaker:

NONE

1. APPROVAL OF MINUTES

Commissioner Grossglass made a motion to approve the June 19, 2008, meeting minutes. Commissioner Nestande seconded the motion and everyone voted in favor of an approval.

2. PUBLIC COMMENTS

None

3. GUEST SPEAKER

None

4. ADMINISTRATIVE MATTERS

Mr. Bugtia informed the group of the status of the EIR. He informed the group that the EIR is underway and are working with ESP Associates who are working on the EIR which Eirc Grubie is the Vice President. EIR has been signed by legal and Planning Director. Mr. Bugtia stated that we are waiting on County Counsel for their review of the Ordinance. He believes there are some issues that may affect the scope. Jim pointed out the issue of how to enforce the ordinance has arisen.

The group discussed the noise ordinance and other noise related issues. Mr. Bugtai stated that he believes that this is one of the issues County Counsel is looking at. We are awaiting direction from County Counsel. It was defined as to what is an OHV. Any vehicle with a license plate is not an OHV.

- Action Item: Jerry to check with Cherri as to status of meeting with Kathryn Lind.**
- Action Item: Jerry to ask if Commission Migliore can attend the Planning Department's meeting with County Counsel.**
- Action Item: Jerry to get clarification as to what constitutes a "track" with County Counsel.**

The group further discussed "what is a track" and asked for clarification. Jim stated that the difference is when you invite the public and charge to ride on it.

The date for the Board has not been determined as of yet. The Planning Department is submitting the Form 11 to the Executive Office.

5. **LUNCH**
6. **OPEN DISCUSSION**
None
7. **ADJOURNMENT**

The meeting was adjourned at 12:30 p.m. The next meeting will be October 16, 2008.

Interviews of Federal, State and Local Agencies

Dana Bell, National Off-Highway Vehicle Conservation Council

The National Off-highway Vehicle Council (NOVCC) is a non-profit, non-membership, educational foundation. The purpose of this program is to develop tools and materials for off-highway vehicle recreation and distribute them to land managers, officials and agencies that are going to develop or operate off-highway vehicle recreation areas. These materials will also assist the OHV recreation public by providing quality information for the recreationist while protecting natural resources. The primary objective of the presentation was to inform the Commission on the role that the National Off-highway Vehicle Conservation Council (NOVCC) plays, provide information on current off-highway vehicle developments, and educate the Commission on general management principles.

Mona Daniels, Bureau of Land Management (BLM)

The Bureau of Land Management, located in Palm Springs, provided the OHV Commission with maps that showed areas of potential OHV use on BLM Lands in Riverside County. Ms. Daniel emphasized that BLM land could serve as potential OHV parks in Riverside County. If the Commission were to partner with BLM, it was suggested that the Commission and BLM could charge clients for the usage of the parks which would prevent the County from having to purchase land. Any fees that are collected from such a park could be used to manage and maintain the facility, eliminating the need for additional county funding.

John Ladley, San Bernardino National Forest, San Jacinto Ranger District

Mr. Ladley gave an overview of off-highway vehicles opportunities within the San Bernardino National Forest, outlining travel route management and future trail planning. The Riverside County portion of the forest allows street legal vehicles on many of the travel routes (licensed plate vehicles). Green sticker users are allowed to use forest roads. Mountain bikes and horses are allowed on the same roads, but typically go to different areas because they prefer not to mix with OHV traffic. Current funding is coming from the national and regional levels; however, there is no funding available for improvements at this time.

Daphne C. Greene, California Off-Highway Motor Vehicular Recreation
Commission

In 1971, California recognized that the increase in OHV recreation activities was creating environmental damage. As a result, the Legislature created the Off-Highway Motor Vehicular Recreation Commission within the Parks Department to

help establish approved riding areas. The mission was to provide statewide leadership for OHV recreation and establish relationships with the counties, certain state parks, and federal agencies, forest service, BLM and native-American tribes. Over the years, the Commission has allocated approximately \$300 million dollars to the Forest Service and BLM combined.

California defines off-highway vehicle recreation as any vehicle which goes off pavement on dirt, whether or not you are a street legal vehicle, typically your pickup truck, 4X4, SUV, or a green sticker vehicle - a non-highway vehicle. They can be anything from dirt bikes, ATV's, sand rails, and buggies to golf carts.

Katie Barrows, Director of Environmental Resources, Coachella Valley Association of Governments (CVAG)

CVAG presented a presentation to the Commission that detailed the multi-species habitat conservation plan for the Coachella Valley. Information was provided on participating areas, funding, Coachella Valley MSHCP benefits to the environment as well as economic benefits, trails, OHV use, reserve assembly, public land in 1996, and the current reserve design.

Ken Graff, Regional Conservation Agency

The primary goal of the RCA is to obtain land for the purpose of biological, reserve and conservation. The RCA has a goal of obtaining 153,000 acres over a 25 year period; to date, the RCA has acquired 36,000 acres. The use of RCA lands for OHV purposes was discussed.

Deputy Penning/Deputy Bartlett, Riverside County Sheriff's Department, OHV Division

The Riverside County Sheriff's Department, OHV Division introduced themselves and explained the infrastructure of their division. The Division consists of eight (8) full-time Deputies and one full-time Sergeant and is part of The Special Enforcement Bureau. The Division handles county issues only, and excludes any enforcement activities within incorporated areas of the County. The Sheriff's Department recently received a grant that provided them with funds to purchase their own OHVs for enforcement purposes. When individuals are pulled over for riding their vehicles in an unapproved area, they are cited under County Code Section 10.12.010, which is riding on private/public land without consent. The code has a few exemptions which include, law enforcement, property owners, agents and anyone with permission to ride on private property.

Paul Frandsen, Riverside County Regional Parks & Open-Space District

Mr. Frandsen, General Manager, and Marc Brewer, Park Planner, gave an overview of the 30 years of history of the DeAnza Cycle Park and the funding issues associated with the development of the DeAnza Park.

David Jones, County Geologist, Riverside County Planning Department

The Commission received a briefing on surface mines within Riverside County and was informed that the mines are controlled by the Surface Mining and Reclamation Act (SMARA), Riverside County Ordinance #555. A discussion was held that explained the reclamation process, i.e., areas where mining has been completed, the conditions of approval have been completed under the entitlement and the area has been re-vegetated. Areas that have been mined, but have not completed reclamation could be good locations for OHV parks.

RIVERSIDE COUNTY PLANNING COMMISSION

TRAIL BIKE PARK STANDARDS

Adopted by the Planning Commission May 25, 1971

1. The development of the premises shall conform substantially with that as shown on Plat Plan marked Exhibit "A."
2. At all times during the operation of the trails, motorized vehicles used upon the trails shall be equipped with spark arrestors and unaltered, commercially manufactured mufflers within a sound not greater than a decibel rating of 90 at 75 feet.
3. Two-wheeled vehicles shall be restricted to one rider only.
4. Thinning and modification of fuels are subject to approval by the State Division of Forestry.
5. A four-foot high, four-strand wire fence shall be erected around the perimeter of the property, and metal or carved wooden signs, 6" x 12", shall be placed at 200 foot intervals on said fence advising as to the limits of the trail course area. Riders shall use marked trails only.

6. Trails shall be treated to reduce dust and erosion. Trails in excess of ten percent grade shall be constructed to include shallow earth swales crossing the trails and situated at 10 foot intervals along the slope. Said swales shall connect to a ditch on one side of the slope which will carry the water off the trail. Said ditch shall be at 90 degrees to the trail and shall be one foot deep by 10 feet in length. Swales and ditches shall be maintained through the months of November to April.

Trails following contours shall be sloped with a minimum slope of three percent in a downhill direction to allow water to drain from the trail.

7. All driveways and automobile parking areas shall be graded and compacted and treated with penetration oil or chemical treatment to prevent dust from arising.
8. The permittee shall provide adequate policing, patrol of trails, supervision and crowd control within the grounds at all times events or recreational riding are in progress.
9. An ambulance with attendants shall be provided on the premises by the permittee at all times events are in progress other than individual recreational riding.
10. No activities involving motorized vehicles shall be permitted before one hour after sunrise nor after sunset.
11. Prior to the commencement of any of the operations permitted hereby, the permittee shall obtain and have in full force and effect at all times thereafter, during use under this permit, a policy of bodily injury and property damage liability insurance, the minimum limits of which policy shall be as follows:

\$100,000.00	bodily injury to any one person
500,000.00	bodily injury to any one accident
100,000.00	property damage liability

Certificates showing that said insurance is in full force and effect will be presented to the Land Use Administrator of Riverside County five (5) days prior to commencement of any of the operations or uses permitted hereby. Renewal certificates shall be furnished to insure continuity of coverage as long as the operations may continue.

- 12. All minimum requirements set forth above for the improvements and operations shall be completed prior to the conduct of any event or use permitted herewith.
- 13. No trail located within 660 feet of any state highway or county road shall be visible therefrom. No trail shall be located nearer than _____ feet from the property line or less than 660 feet from any existing residence.

14. Prior to _____, the applicant shall first obtain permits and/or clearance from the following public agencies:

U.S. Soil Conservation District
 State Division of Forestry
 Department of Public Health

Head Department
 Water Quality Control Board No. _____
 State Division of Highways
 Parks Department

- 15. _____

16. In the event the use permitted hereby ceases operation for a period of one year or more, this permit shall become null and void.

17. This approval shall be used within one year after final proceedings before the Board of Supervisors, otherwise, it shall become null and void and of no effect whatsoever. By "use" is meant beginning of operations permitted herewith and compliance with the conditions.