

**SUBMITTAL TO THE BOARD OF SUPERVISORS
COUNTY OF RIVERSIDE, STATE OF CALIFORNIA**

615A



FROM: TLMA - Transportation Department

SUBMITTAL DATE:
December 15, 2008

SUBJECT: Drainage improvements and associated improvements on Reche Canyon Road between Woodson Road and the Riverside County line, Moreno Valley area.

RECOMMENDED MOTION: That the Board of Supervisors approve the plans and specifications for the drainage improvements and associated improvements on Reche Canyon Road between Woodson Road and the Riverside County line, Moreno Valley area. Authorize the Clerk to advertise for bids to be received in the office of the Director of Transportation up to the hour of 2:00 pm, Wednesday, January 14, 2009, at which time bids will be opened.

BACKGROUND: The Transportation Improvement Program provides for the drainage improvements and associated improvements on Reche Canyon Road between Woodson Road and the Riverside County line, Moreno Valley area.

Juan C. Perez
Director of Transportation

JCP:jrj
(Continued On Attached Page)

FINANCIAL DATA	Current F.Y. Total Cost:	\$ 113,695	In Current Year Budget:	Yes
	Current F.Y. Net County Cost:	\$ 0	Budget Adjustment:	No
	Annual Net County Cost:	\$ 0	For Fiscal Year:	2008/2009

SOURCE OF FUNDS: Measure A/ Western (100%)	Positions To Be Deleted Per A-30	<input type="checkbox"/>
	Requires 4/5 Vote	<input type="checkbox"/>

C.E.O. RECOMMENDATION:

APPROVE

BY:
Tina Grande

County Executive Office Signature

Policy
 Policy

Consent
 Consent

Dept't Recomm.:
 Per Exec. Ofc.:

Prev. Agn. Ref.

District: 5

Agenda Number:

3.39

FORM APPROVED, COUNTY COUNSEL
 BY:
 MARSHA L. VICTOR
 DATE: 12/10/08
 Departmental Concurrence

The Honorable Board of Supervisors

RE: Drainage improvements and associated improvements on Reche Canyon Road between Woodson Road and the Riverside County line, Moreno Valley area.

December 15, 2008

Page 2 of 2

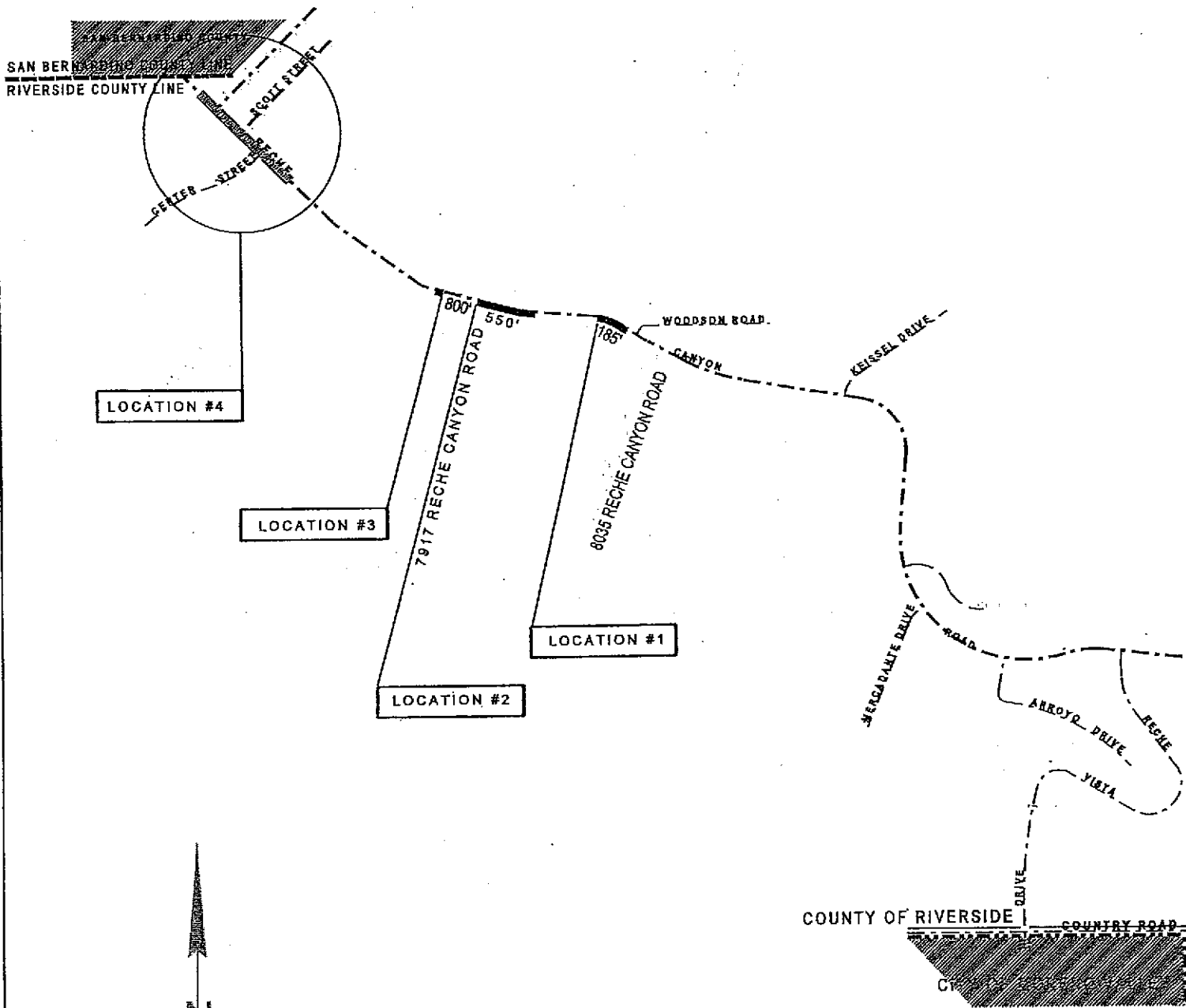
The drainage improvements on this road will provide protection to the adjacent road embankment to prevent it from undermining the improved road and the improvements will also minimize maintenance costs incurred after rain events.

The submitted plans and specifications have been approved as to form by County Counsel.

Environmental clearance is complete.

Project No: B5-0627

RECHE CANYON ROAD MAINTENANCE DRAINAGE IMPROVEMENTS IN VARIOUS LOCATIONS.



PROJECT LENGTH = 0.22 MI.
TOWNSHIP 2S RANGE 3W SECTION 7,18 &19
TOWNSHIP 2S RANGE 4W SECTION 11 &12

VICINITY MAP