

SUBMITTAL TO THE BOARD OF SUPERVISORS
COUNTY OF RIVERSIDE, STATE OF CALIFORNIA

831A



FROM: County Counsel

SUBMITTAL DATE: December 23, 2008

SUBJECT: Ordinance No. 348.4632

RECOMMENDED MOTION: That the Board of Supervisors adopt Ordinance No. 348.4632 amending the zoning in the Lake Mathews District shown on Map No. 36.055 Change of Zone Case No. 7568.

BACKGROUND: Change of Zone Case No. 7568 was tentatively approved by the Board of Supervisors on December 16, 2008.

Pamela J. Walls
PAMELA J. WALLS *Michelle Clerk*
Interim County Counsel

C.E.O. RECOMMENDATION:

APPROVE

BY *Tina Grande*
Tina Grande

County Executive Office Signature

Policy

Policy

Consent

Consent

Department Recommendation:

Per Executive Office:

Prev. Agn. ref.

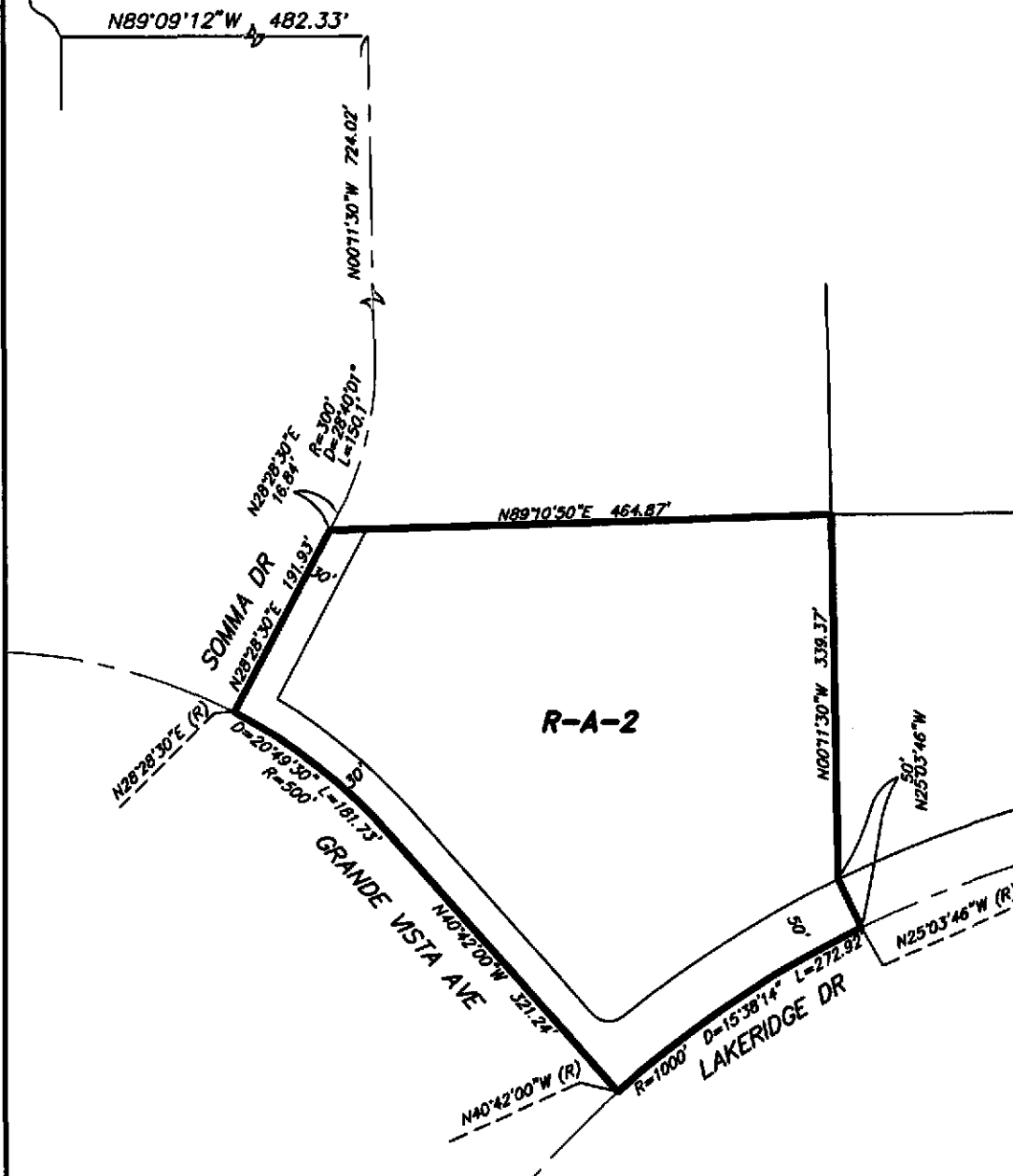
Dist. FIRST

AGENDA NO.

2.3

SEC. 16, T4S R5W S.B.M.

NW COR. S1/2
SE 1/4 NW 1/4
SEC 16

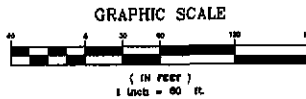


LEGEND
R-A-2 RESIDENTIAL AGRICULTURAL 2 ACRE MIN.
 MAP NO. 36.055

CHANGE OF OFFICIAL ZONING PLAN
LAKE MATHEWS
DISTRICT

CHANGE OF ZONE CASE NO. 7568
 AMENDING ORDINANCE NO. 348
 ADOPTED BY ORDINANCE NO. 348.4632
 MONTH JANUARY 13, 2009

RIVERSIDE COUNTY BOARD OF SUPERVISORS



ASSESSOR PARCEL NUMBER: 288-150-007