

SUBMITTAL TO THE BOARD OF SUPERVISORS
COUNTY OF RIVERSIDE, STATE OF CALIFORNIA

809 B



FROM: TLMA - Transportation Department

SUBMITTAL DATE:
January 5, 2009

SUBJECT: Miscellaneous Case 3947 (Lake Elsinore Tract 25479)
A Subdivision in Lake Elsinore Area
Extension of Time Agreements

RECOMMENDED MOTION: That the Board approve the attached Subdivision Improvement Agreements as approved by County Council.

BACKGROUND: The developer desires to enter into extension of time agreements (which grant an extension of time for twelve months to complete improvements), and has submitted agreements and securities which have been approved by County Council.

REVIEWED BY EXECUTIVE OFFICE
DATE 1/6/09
Concurrence Tina Grande

FORM APPROVED COUNTY COUNSEL
BY: PAMELA J. WALLS
DATE 12/2/08

Juan C. Perez
Director of Transportation

HS:lf
Submittals: Vicinity Map
Road/Drainage Agrmts

Policy

Consent

Dept's Recomm.:
Per Exec. Ofc.:

Prev. Agn. Ref.

District: 1

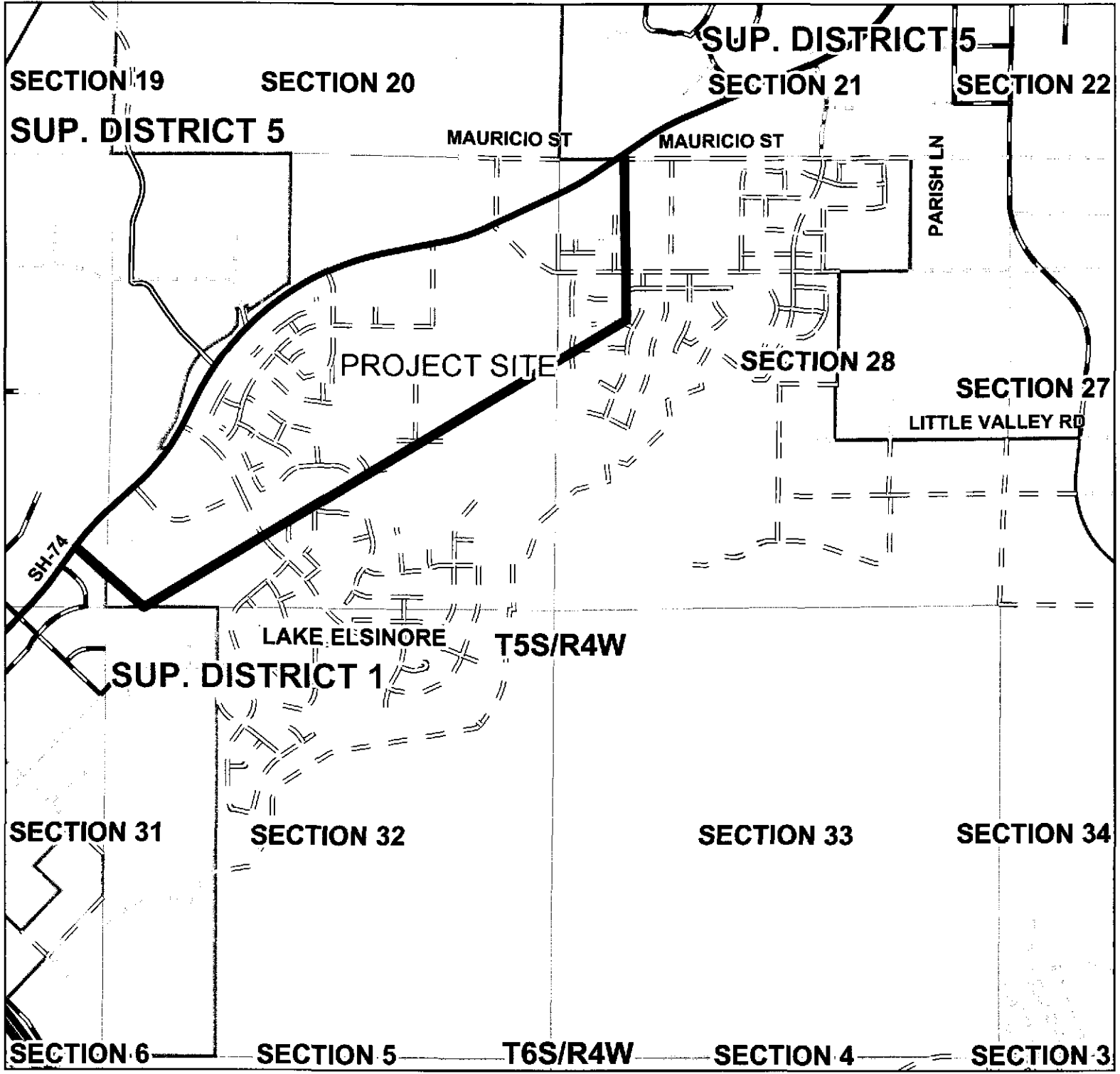
Agenda Number:

ATTACHMENTS FILED
WITH THE CLERK OF THE BOARD

2.7



Miscellaneous Case 3947 (Tract 25479)



Roadway Legend

- | | | |
|--|-----------------------------|-------------|
| FEDERAL AID INTERSTATE; STATE HIGHWAYS | NON-COUNTY ROAD | HWY |
| F.A.S./F.A.U. MAINTAINED | CITY ROAD | INTERCHANGE |
| PAVED SURFACE MAINTAINED | UNDEFINED | INTERSTATE |
| GRAVELED SURFACE MAINTAINED | ABANDON | OFFRAMP |
| DIRT SURFACE MAINTAINED | VACATED | ONRAMP |
| ACCEPTED FOR PUBLIC USE | CITY OR WILDOMAR MAINTAINED | USHWY |