

SUBMITTAL TO THE BOARD OF SUPERVISORS
COUNTY OF RIVERSIDE, STATE OF CALIFORNIA



917B

FROM: TLMA - Transportation Department

SUBMITTAL DATE:

January 15, 2009

SUBJECT: Plot Plan 18477
A Subdivision in the Eastvale Area
ONE YEAR GUARANTEE AND MAINTENANCE AGREEMENTS

RECOMMENDED MOTION: That the Board approve the attached One Year Guarantee and Maintenance Agreements as approved by County Counsel and authorize the Chairman to sign the agreements for this project.

BACKGROUND: Improvements were completed for this project on October 8, 2008. The developer desires to enter into Maintenance Agreements to guarantee a one year maintenance of the improvements and has submitted agreements and securities which have been approved by County Counsel.

REVIEWED BY EXECUTIVE OFFICE

DATE 1/14/09 Tina Grande

FORM APPROVED COUNTY COUNSEL
BY: Pamela J. Walls 12/13/08
PAMELA J. WALLS DATE

Departmental Concurrence

Juan C. Perez
Director of Transportation

HS:lf
Submittals: Vicinity Map
Road/Drainage Maint Agrmts
Water System Maint Agrmts
Sewer System Maint Agrmts

Policy

Consent

Dep't Recomm.:
Per Exec. Ofc.:

Prev. Agn. Ref.

District: 2

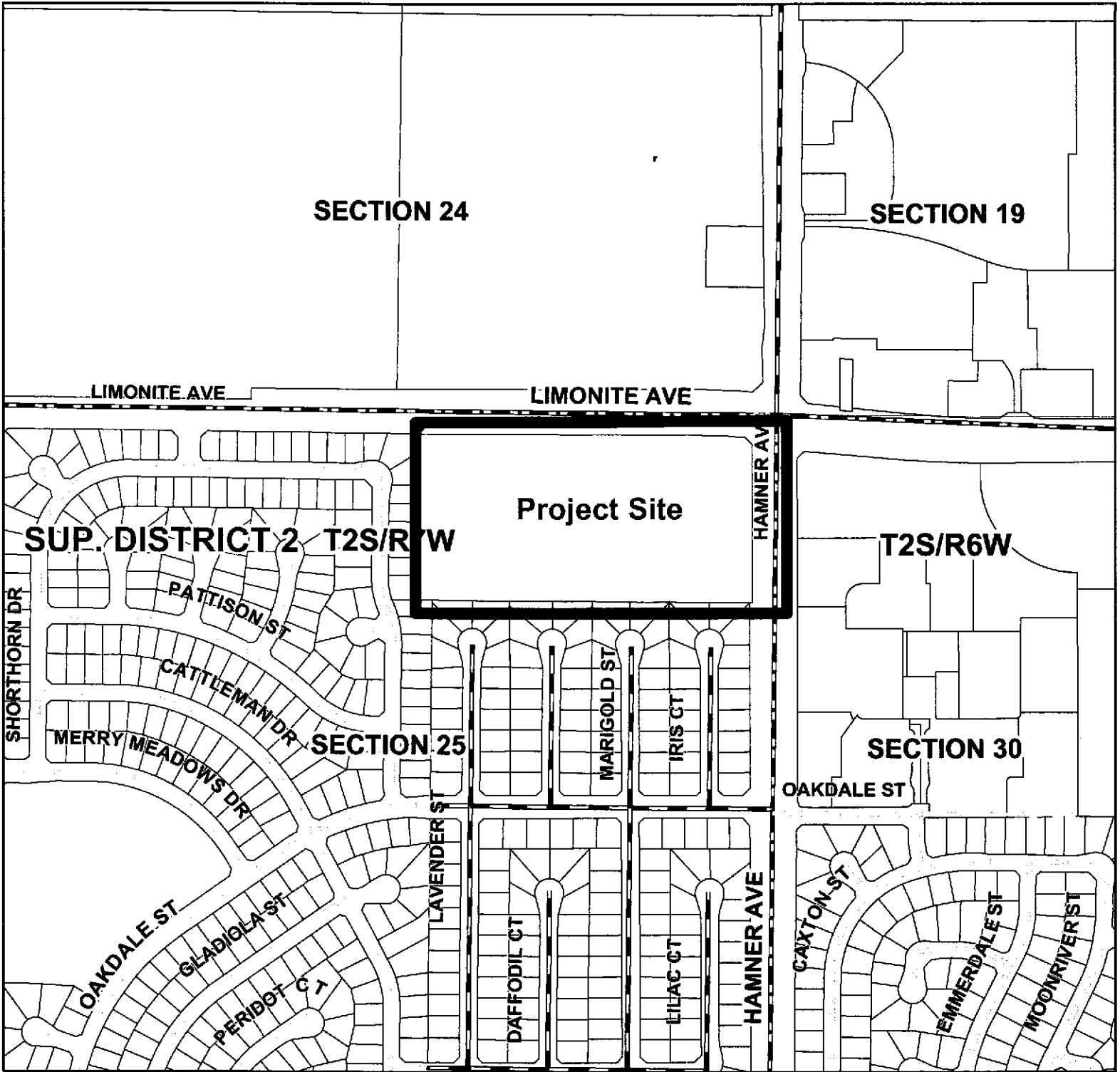
Agenda Number:

Vicinity Map



The County of Riverside assumes no warranty or legal responsibility for the information contained on this map. Data and information represented on this map is subject to updates, modifications and may not be complete or appropriate for all purposes. County GIS and other sources should be queried for the most current information. Do not copy or reuse this map.

Plot Plan 18477



Roadway Legend

- | | | |
|--|-----------------------------|-------------|
| FEDERAL AID INTERSTATE; STATE HIGHWAYS | NON-COUNTY ROAD | HWY |
| F.A.S./F.A.U. MAINTAINED | CITY ROAD | INTERCHANGE |
| PAVED SURFACE MAINTAINED | UNDEFINED | INTERSTATE |
| GRAVELED SURFACE MAINTAINED | ABANDON | OFFRAMP |
| DIRT SURFACE MAINTAINED | VACATED | ONRAMP |
| ACCEPTED FOR PUBLIC USE | CITY OR WILDOMAR MAINTAINED | USHWY |