

**SUBMITTAL TO THE BOARD OF SUPERVISORS  
COUNTY OF RIVERSIDE, STATE OF CALIFORNIA**

411 B



**FROM:** TLMA - Transportation Department

**SUBMITTAL DATE:**

February 11, 2009

**SUBJECT:** Tract 31019  
A Schedule "A" Subdivision in the Bermuda Dunes Area  
**Extension of Time Agreements**

**RECOMMENDED MOTION:** That the Board approve the attached agreements (which grant an extension of time for twelve months to complete improvements).

**BACKGROUND:** On October 2, 2007, the Board entered into agreements with GHA Paloma Group LLC for the improvement of streets and the installation of a water and sewer system within the above referenced subdivision. Accompanying these agreements were faithful performance securities posted by Insurance Company of the West as follows:

- \$1,155,500 - Bond #2136578 for the completion of street improvements
- \$307,500 - Bond #2136578 for the completion of the water system
- \$370,000 - Bond #2136578 for the completion of the sewer system
- \$67,000 - Bond #2136579 for the completion of the monumentation

The developer requests an extension of time for the completion of this project. Our records indicate that this project is approximately 50% completed for streets and utility work. The agreements for the extension of time have been approved by County Counsel.

Juan C. Perez  
Director of Transportation

HS:lf

- Submittals: Vicinity Map  
 Road/Drainage Imprv Agrmts  
 Water System Imprv Agrmts  
 Sewer System Imprv Agrmts  
 Monumentation Agreements

REVIEWED BY EXECUTIVE OFFICE

DATE

2/9/09

Departmental Concurrence Ina Grande

FORM APPROVED COUNTY COUNSEL

BY: Elena M. Rofva 01/12/09

ELENA M. ROFVA

Policy

Policy

Consent

Consent

Dept's Recomm.:

Per Exec. Ofc.:

Prev. Agn. Ref. 10/02/07 - 2.37

District: 4

Agenda Number:

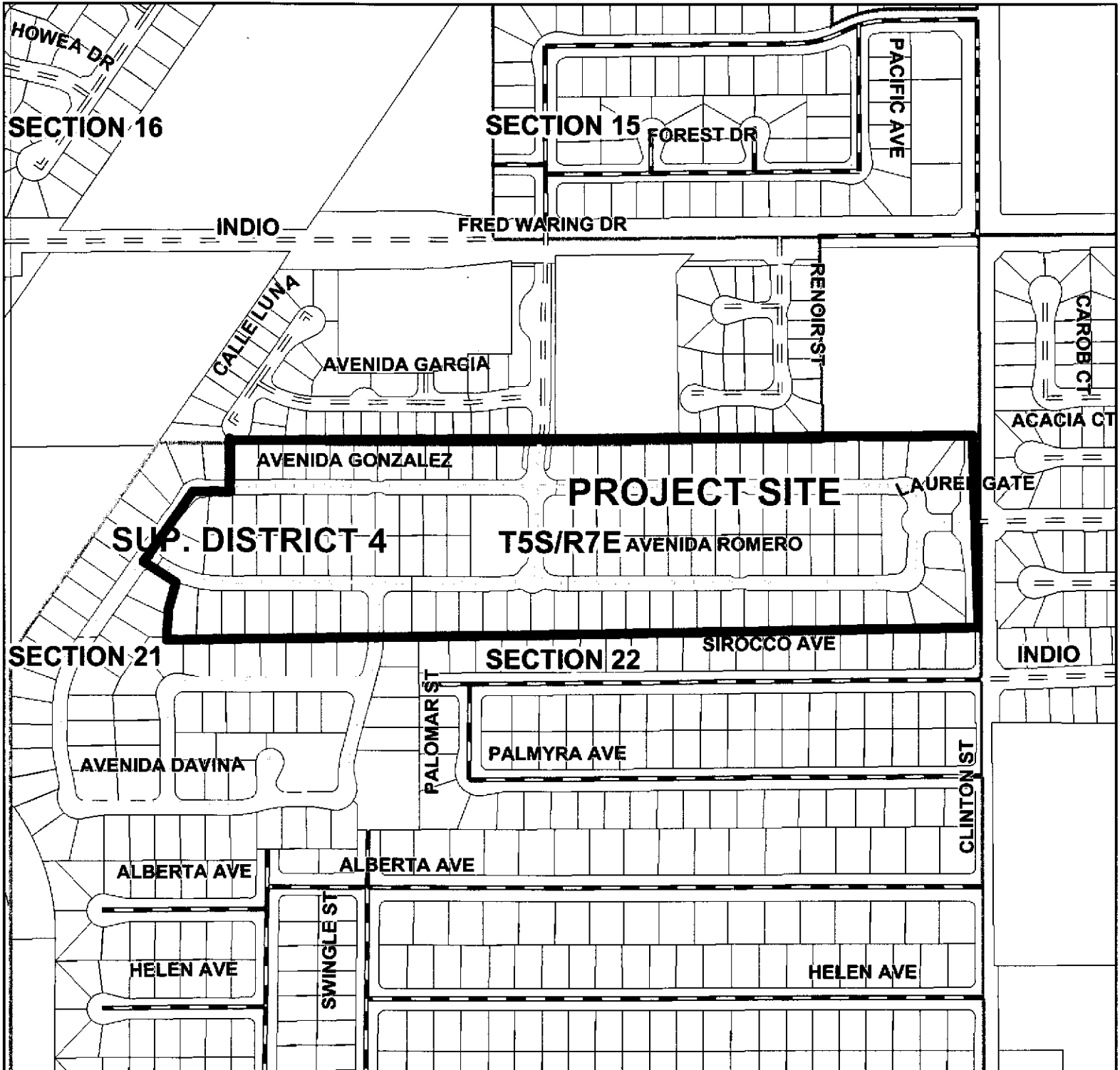
2.27

# Vicinity Map



The County of Riverside assumes no warranty or legal responsibility for the information contained on this map. Date and information represented on this map is subject to updates, modifications and may not be complete or appropriate for all purposes. County GIS and other sources should be queried for the most current information. Do not copy or reuse this map.

## Tract 31019



### Roadway Legend

- |  |                             |             |
|--|-----------------------------|-------------|
| FEDERAL AID INTERSTATE; STATE HIGHWAYS | NON-COUNTY ROAD             | HWY         |
| F.A.S./F.A.U. MAINTAINED               | CITY ROAD                   | INTERCHANGE |
| PAVED SURFACE MAINTAINED               | UNDEFINED                   | INTERSTATE  |
| GRAVELED SURFACE MAINTAINED            | ABANDON                     | OFFRAMP     |
| DIRT SURFACE MAINTAINED                | VACATED                     | ONRAMP      |
| ACCEPTED FOR PUBLIC USE                | CITY OR WILDOMAR MAINTAINED | USHWY       |