

520

**SUBMITTAL TO THE BOARD OF DIRECTORS OF THE REDEVELOPMENT AGENCY
COUNTY OF RIVERSIDE, STATE OF CALIFORNIA**



FROM: Redevelopment Agency

SUBMITTAL DATE:
February 11, 2009

SUBJECT: Adopt RDA Resolution No. 2009-014 Authorization to Convey Real Property in the I-215 Corridor Project Area and Mid-County Project Area from the Agency to the County of Riverside—3rd District

RECOMMENDED MOTION: That the Board of Directors:

1. Approve RDA Resolution No. 2009-014, Authorization to Convey Real Property from the Agency to the County of Riverside, known as Assessor's Parcel Numbers 336-011-047 and 439-060-025;
2. Authorize the Chairman of the Board to execute the deeds granting title to the County; and
3. Authorize the Executive Director of the Redevelopment Agency or designee to execute and take all necessary steps to convey the real property including signing subsequent, necessary and related documents to complete this transaction.

BACKGROUND: The Redevelopment Agency wishes to convey two properties located in the third district to the County to facilitate redevelopment. The first property is known as Rancho Ramona Park located on Assessor's Parcel Number 336-011-047, consisting of 1.87 acres located at 28050 Encanto Drive between Granada Way and Alta Vista Way in the City of Menifee. The second property is known as Assessor's Parcel Number 439-060-025 consisting of 1.44 acres located at 749 N State Street in the City of Hemet.
(continued on page 2)

Robin Zimpfer

Robin Zimpfer, Executive Director

RZ:DL:TE:JP:DSC

S:\RealProperty\Real Property\District Projects\Dist 3\Rancho Romona Park\FM11 RDA convey to EDA 2-11-090.doc

FINANCIAL DATA	Current F.Y. Total Cost:	\$ 0	In Current Year Budget:	Yes
	Current F.Y. Net County Cost:	\$ 0	Budget Adjustment:	No
	Annual Net County Cost:	\$ 0	For Fiscal Year:	N/A

COMPANION ITEM ON BOARD OF SUPERVISORS AGENDA: Yes

SOURCE OF FUNDS: N/A	Positions To Be Deleted Per A-30	<input type="checkbox"/>
	Requires 4/5 Vote	<input type="checkbox"/>

C.E.O. RECOMMENDATION:

APPROVE

BY: *Jennifer L. Sargent*

Jennifer L. Sargent

County Executive Office Signature

FORM APPROVED COUNTY COUNSEL
DATE 2/11/09
BY MICHELLE CLACK

Departmental Concurrence

Consent
 Policy
 Consent
 Policy
 Dept's Recomm.:
 Per Exec. Ofc.:

Prev. Agn. Ref.:

District: 5

Agenda Number:

42

BACKGROUND (continued):

Upon conveyance, the Economic Development Agency intends to rehabilitate the park site and utilize the property in Hemet for a Senior One-Stop. Staff recommends adoption of Resolution No. 2009-014 as presented.

Guided by Government Code Section 7267: "In order to encourage and expedite the acquisition and relieve congestion in the courts, to assume consistent treatment for owners in the public programs, and to promote public land acquisition practices, public entities shall, to the greatest extent practicable be guided by the provision of Section 7267.1: 'The public entity shall make every reasonable effort to acquire expeditiously real property by negotiation.' "

BOARD OF DIRECTORS

REDEVELOPMENT AGENCY

**RESOLUTION NO. 2009-014
AUTHORIZATION TO CONVEY REAL PROPERTY IN
THE I-215 CORRIDOR PROJECT AREA AND THE MID COUNTY
PROJECT AREA IN THE COUNTY OF RIVERSIDE
Third District**

WHEREAS, the Redevelopment Agency for the County of Riverside (the "Agency") is a redevelopment agency duly created, established and authorized to transact business and exercise its powers, all under and pursuant to the provisions of the Community Redevelopment Law which is Part 1 of Division 24 of the California Health and Safety Code (commencing with Section 33000 et seq.); and

WHEREAS, the Riverside County Board of Supervisors adopted redevelopment plans for Redevelopment Project Area Nos. 1-1986, Jurupa Valley, Mid-County, Desert Communities and the I-215 Corridor, as amended, (the "Project Areas"); and

WHEREAS, pursuant to Section 33670 of the Health and Safety Code, the Agency began receiving tax increment from the Project Areas in January 1988, and continues to receive annual tax increment revenue; and

WHEREAS, pursuant to Section 33430 of the Health and Safety Code, the Agency may within the survey area or for purposes of redevelopment sell, lease, exchange, subdivide, transfer, assign, pledge or otherwise dispose of any real or personal property or any interest in property; and

WHEREAS, the Agency wishes to convey to the County, Assessor's Parcel Number 336-011-047 consisting of 1.87 acres located at 28050 Encanto Drive between Granada Way and Alta Vista Way in the I-215 Corridor Redevelopment Project Area in the City of Menifee; and

WHEREAS, the Agency wishes to convey to the County Assessor's Parcel Number 439-060-025 consisting of 1.44 acres located at 749 N State Street in the Mid County Redevelopment Project Area in the City of Hemet in the County of Riverside from the Agency; and

FORM APPROVED COUNTY COUNSEL
BY MICHELLE CLACK
DATE 1/19/09

1 **WHEREAS**, the conveyance of these properties will assist the Agency in meeting
2 its goal of enchancing communities within the County of Riverside.

3
4 **NOW THEREFORE, BE IT RESOLVED, DETERMINED, AND ORDERED** by the
5 Board of Directors of the Redevelopment Agency for the County of Riverside, State of
6 California, in regular session assembled on March 3, 2009, as follows:

7 1. That the Board of Directors hereby finds and declares that the above
8 recitals are true and correct.

9 2. That the Redevelopment Agency for the County of Riverside is authorized
10 to convey real property known as Assessor's Parcel Number 336-011-047 consisting of
11 1.87 acres located at 28050 Encanto Drive between Granada Way and Alta Vista Way
12 in the City of Menifee.

13 3. That the Redevelopment Agency for the County of Riverside is authorized
14 to convey real property known as Assessor's Parcel Number 439-060-025 consisting of
15 1.44 acres located at 749 N State Street in the City of Hemet in Riverside County.

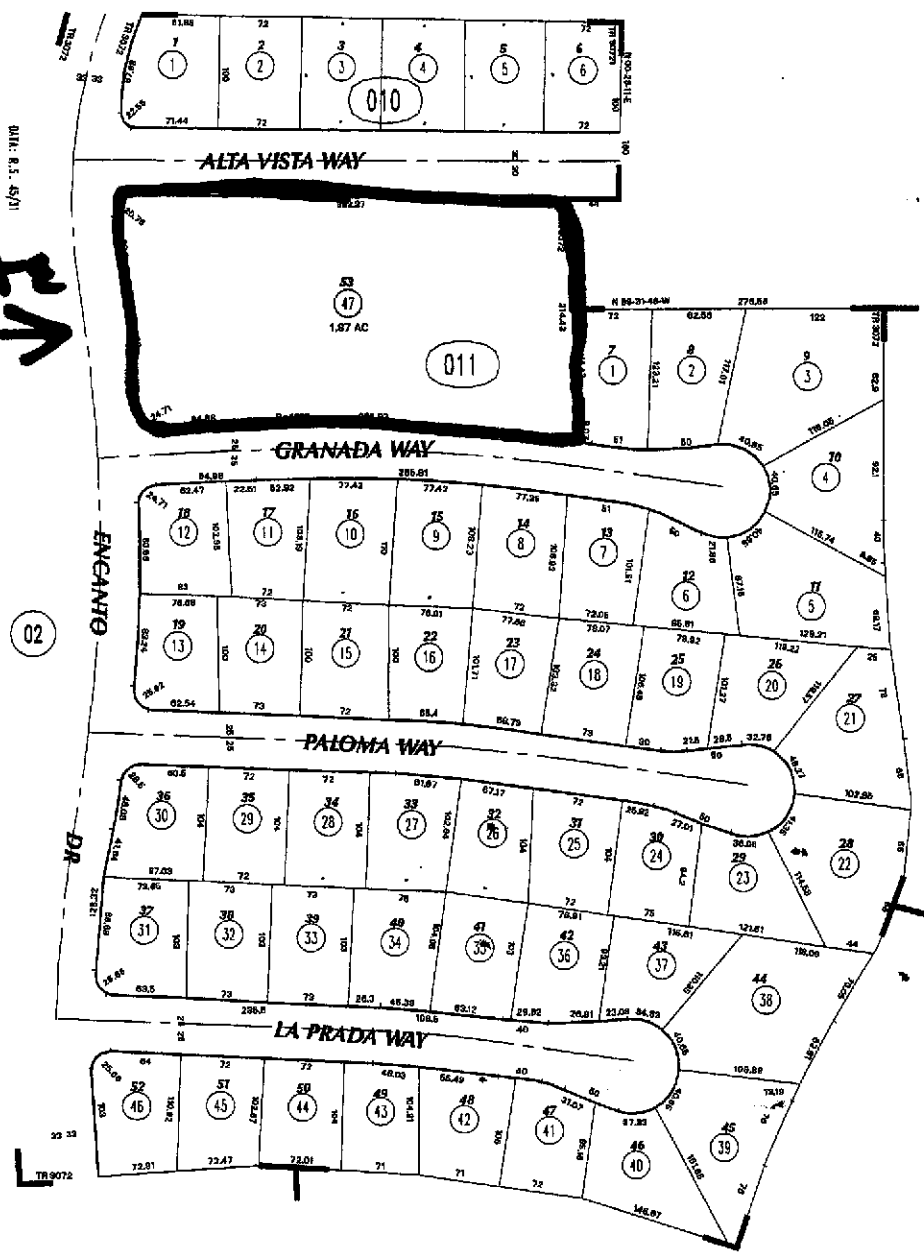
16 4. That the Chairman of the Board of Directors is hereby authorized to
17 execute any and all documents necessary to convey the real property to the County of
18 Riverside from the Redevelopment Agency for the County of Riverside.

19 5. That the Executive Director of the Redevelopment Agency or designee is
20 hereby authorized to take necessary steps to complete this transaction including
21 executing subsequent relevant and necessary documents.
22

THIS MAP WAS PREPARED FOR ASSESSMENT PURPOSES ONLY. NO LIABILITY IS ASSUMED FOR THE ACCURACY OF THE DATA SHOWN. STATE OF CALIFORNIA, COUNTY OF RIVERSIDE, CALIF. MAY NOT COMPLY WITH LOCAL ORDINANCES.

ASSESSOR'S MAP R1336 PG. 01
Riverside County, Calif.

0217



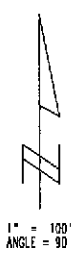
Parksite
↓

POR. NW 27 T. 5S., R. 3W

LR 57/54-55 TRACT MAP NO 3072

JULY 04

SEP 16 2004



T. R. A. 054-037

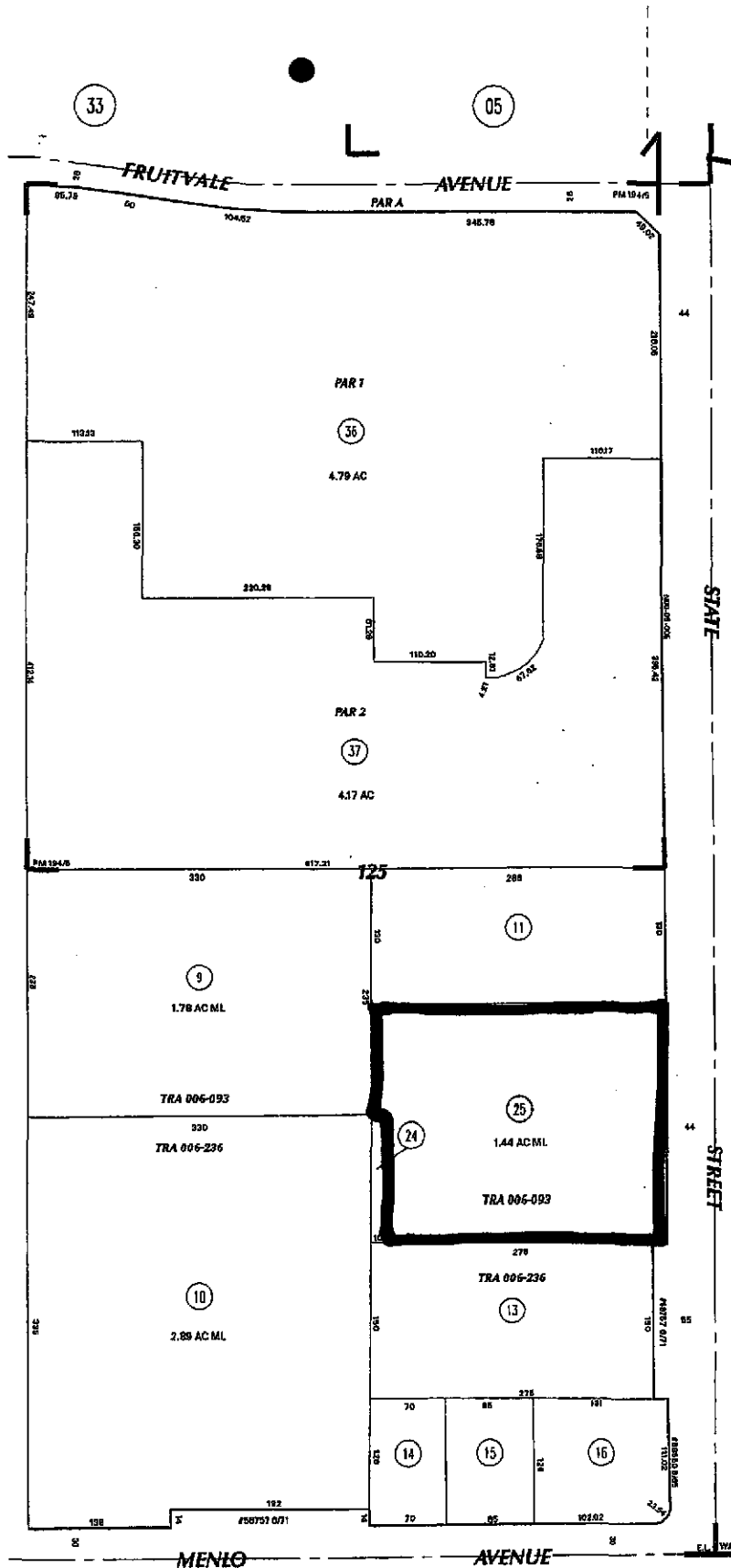
336-01
334-02

THIS MAP WAS PREPARED FOR ASSESSMENT PURPOSES ONLY. NO LIABILITY IS ASSUMED FOR THE ACCURACY OF THE DATA SHOWN. ASSESSOR'S OFFICE MAY NOT CORRECT WITH LOCAL LAND-SPLIT OR BUILDING SITE CONFORMANCE.

POR. SEC 3 T. 5S, R. 1W
CITY OF HEMET

T.R.A. 006-093
006-236

439-06
13-05, 13-30-5



ASSESSOR'S MAP BR339 PG.06
Riverside County, Calif.

8/2/21

DATA MAP 8/30/20

MB 9/4/10 S.D. ESTUDILLO LD & WATER CO. ADD
PM 194/5-7 PARCEL MAP NO. 28501

Feb 2000
MAR 0 6 2000

DATE	OLD NUMBER	NEW NUMBER
1/1/77	006-093	006-093
1/1/77	006-236	006-236
1/1/77	006-237	006-237
1/1/77	006-238	006-238
1/1/77	006-239	006-239
1/1/77	006-240	006-240
1/1/77	006-241	006-241
1/1/77	006-242	006-242
1/1/77	006-243	006-243
1/1/77	006-244	006-244
1/1/77	006-245	006-245
1/1/77	006-246	006-246
1/1/77	006-247	006-247
1/1/77	006-248	006-248
1/1/77	006-249	006-249
1/1/77	006-250	006-250
1/1/77	006-251	006-251
1/1/77	006-252	006-252
1/1/77	006-253	006-253
1/1/77	006-254	006-254
1/1/77	006-255	006-255
1/1/77	006-256	006-256
1/1/77	006-257	006-257
1/1/77	006-258	006-258
1/1/77	006-259	006-259
1/1/77	006-260	006-260
1/1/77	006-261	006-261
1/1/77	006-262	006-262
1/1/77	006-263	006-263
1/1/77	006-264	006-264
1/1/77	006-265	006-265
1/1/77	006-266	006-266
1/1/77	006-267	006-267
1/1/77	006-268	006-268
1/1/77	006-269	006-269
1/1/77	006-270	006-270
1/1/77	006-271	006-271
1/1/77	006-272	006-272
1/1/77	006-273	006-273
1/1/77	006-274	006-274
1/1/77	006-275	006-275
1/1/77	006-276	006-276
1/1/77	006-277	006-277
1/1/77	006-278	006-278
1/1/77	006-279	006-279
1/1/77	006-280	006-280
1/1/77	006-281	006-281
1/1/77	006-282	006-282
1/1/77	006-283	006-283
1/1/77	006-284	006-284
1/1/77	006-285	006-285
1/1/77	006-286	006-286
1/1/77	006-287	006-287
1/1/77	006-288	006-288
1/1/77	006-289	006-289
1/1/77	006-290	006-290
1/1/77	006-291	006-291
1/1/77	006-292	006-292
1/1/77	006-293	006-293
1/1/77	006-294	006-294
1/1/77	006-295	006-295
1/1/77	006-296	006-296
1/1/77	006-297	006-297
1/1/77	006-298	006-298
1/1/77	006-299	006-299
1/1/77	006-300	006-300