

SUBMITTAL TO THE BOARD OF SUPERVISORS  
COUNTY OF RIVERSIDE, STATE OF CALIFORNIA

947A



FROM: County Counsel  
SUBJECT: Ordinance No. 348.4642

SUBMITTAL DATE: March 19, 2009

RECOMMENDED MOTION: That the Board of Supervisors adopt Ordinance No. 348.4642 amending the zoning in the Aguanga Area shown on Map No. 2.2303 Change of Zone Case No. 7694.

BACKGROUND: Change of Zone Case No. 7694 was tentatively approved by the Board of Supervisors on March 17, 2009.

PAMELA J. WALLS  
County Counsel

DAVID H. K. HUFF

C.E.O. RECOMMENDATION:

APPROVE

BY:   
Tina Grande

County Executive Office Signature

Policy  
 Policy

Consent  
 Consent

Department Recommendation:  
Per Executive Office:

Prev. Agn. ref. 2009-03-10

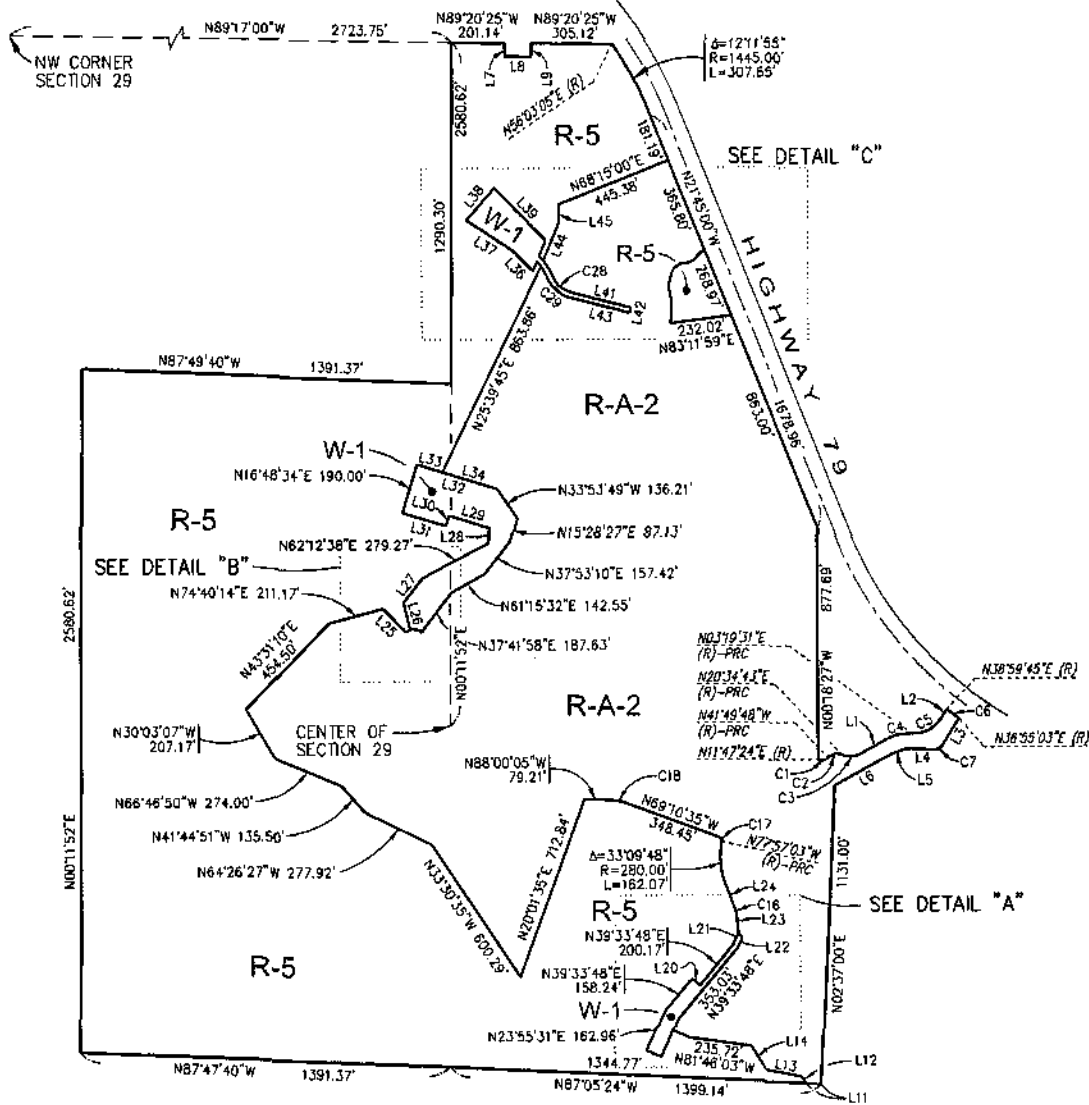
Dist. THIRD

AGENDA NO.



# AGUANGA AREA

SEC. 29, T. 8 S., R. 1 E. S. B. B. & M.



### LEGEND

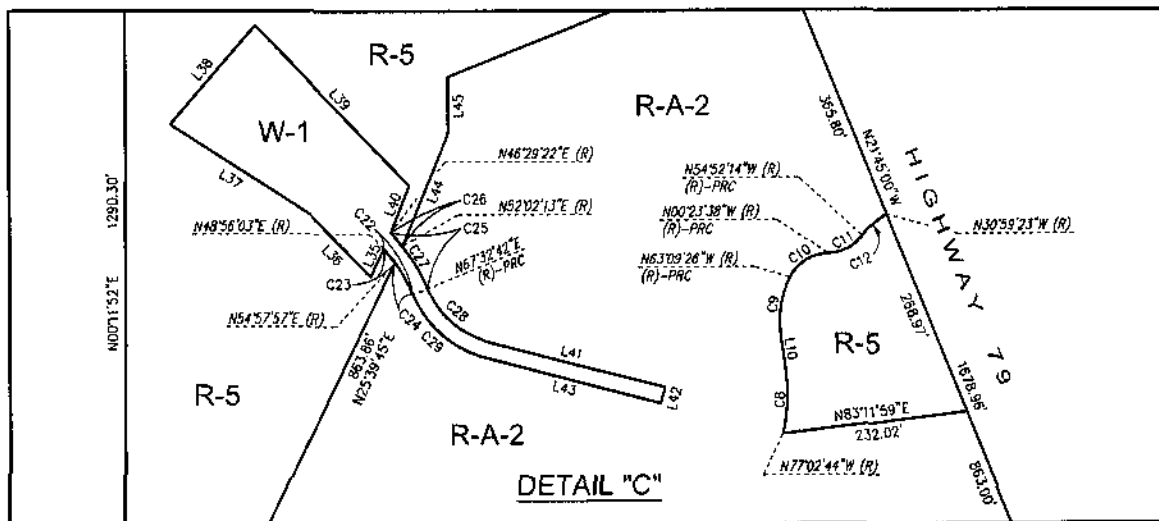
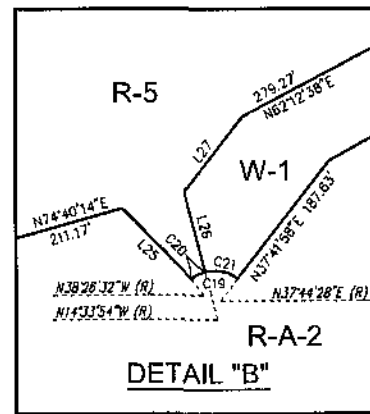
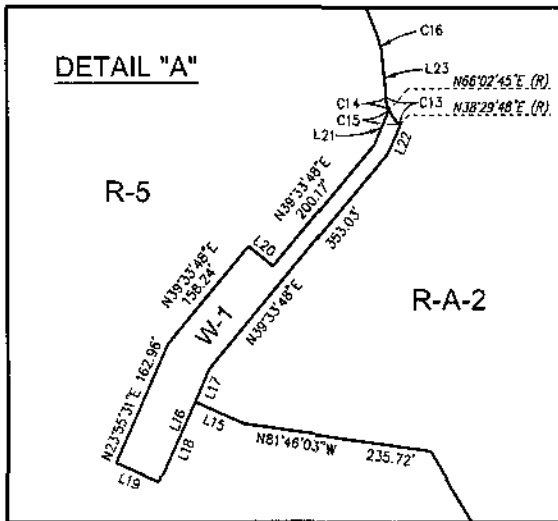
- R-A-2** RESIDENTIAL AGRICULTURAL  
2 ACRE MINIMUM
- R-5** OPEN AREA COMBINING ZONE  
RESIDENTIAL DEVELOPMENT
- W-1** WATERCOURSE, WATERSHED  
AND CONSERVATION



MAP NO. 2.2303  
**CHANGE OF OFFICIAL ZONING PLAN  
 AMENDING**  
**MAP NO. 2, ORDINANCE NO. 348**  
 CHANGE OF ZONE CASE NO. 7694  
 ADOPTED BY ORDINANCE NO. 348.4642  
 ADOPTION DATE: MARCH 31, 2009  
 RIVERSIDE COUNTY BOARD OF SUPERVISORS

# AGUANGA AREA

SEC. 29, T. 8 S., R. 1 E. S. B. B. & M.



### LEGEND

- |       |   |
|-------|---|
| R-A-2 | RESIDENTIAL AGRICULTURAL<br>2 ACRE MINIMUM          |
| R-5   | OPEN AREA COMBINING ZONE<br>RESIDENTIAL DEVELOPMENT |
| W-1   | WATERCOURSE, WATERSHED<br>AND CONSERVATION          |



MAP NO. 2.2303  
**CHANGE OF OFFICIAL ZONING PLAN  
 AMENDING**  
**MAP NO. 2, ORDINANCE NO. 348**  
 CHANGE OF ZONE CASE NO. 7694  
 ADOPTED BY ORDINANCE NO. 348.4642  
 ADOPTION DATE: MARCH 31, 2009  
 RIVERSIDE COUNTY BOARD OF SUPERVISORS

**AGUANGA AREA**  
 SEC. 29, T. 8 S., R. 1 E. S. B. B. & M.

LINE TABLE		
LINE	LENGTH	BEARING
L1	104.37'	N60°50'49"E
L2	38.89'	N31°05'01"E
L3	124.80'	N31°05'01"E
L4	112.44'	N87°43'14"W
L5	67.87'	N69°41'12"E
L6	235.53'	N60°50'49"E
L7	50.00'	N00°39'35"E
L8	100.00'	N89°20'25"W
L9	50.00'	N00°39'35"E
L10	39.69'	N08°25'06"W
L11	54.37'	N87°05'24"W
L12	34.18'	N32°21'02"W
L13	138.36'	N79°58'56"W
L14	103.21'	N30°48'25"W
L15	67.09'	N66°04'29"W
L16	154.72'	N23°55'31"E
L17	44.72'	N23°55'31"E
L18	110.00'	N23°55'31"E
L19	60.00'	N66°04'29"W
L20	40.00'	N50°26'12"W
L21	48.20'	N23°18'47"E
L22	39.99'	N23°18'47"E
L23	50.00'	N04°48'10"W
L24	98.05'	N21°06'51"W
L25	122.72'	N44°08'12"W
L26	103.69'	N14°33'54"W
L27	120.65'	N37°41'58"E
L28	55.23'	N03°50'55"E
L29	162.76'	N73°11'26"W
L30	40.00'	N16°48'34"E
L31	170.00'	N73°11'26"W
L32	315.28'	N73°11'26"W
L33	101.25'	N73°11'26"W
L34	214.03'	N73°11'26"W
L35	39.47'	N25°39'45"E
L36	106.33'	N43°37'21"W
L37	210.77'	N56°49'42"W
L38	163.78'	N40°44'48"E
L39	278.75'	N43°37'21"W
L40	63.25'	N22°13'22"E
L41	228.44'	N75°09'46"W
L42	20.00'	N14°50'14"E
L43	228.44'	N75°09'46"W
L44	154.43'	N22°13'22"E
L45	69.96'	N00°00'00"E

CURVE TABLE			
CURVE	LENGTH	RADIUS	DELTA
C1	37.43'	40.00'	53°37'12"
C2	56.64'	52.00'	62°24'31"
C3	78.12'	90.00'	49°43'54"
C4	100.90'	178.00'	32°28'42"
C5	132.53'	122.00'	62°14'30"
C6	56.41'	1555.00'	2°04'42"
C7	26.70'	25.00'	61°11'45"
C8	85.05'	228.00'	21°22'22"
C9	75.08'	122.00'	35°15'40"
C10	60.25'	55.00'	62°45'48"
C11	49.44'	52.00'	54°28'36"
C12	41.94'	100.63'	23°52'51"
C13	39.12'	48.00'	46°42'02"
C14	16.04'	48.00'	19°09'05"
C15	23.08'	48.00'	27°32'57"
C16	28.47'	100.00'	16°18'41"
C17	21.26'	15.00'	81°13'32"
C18	105.14'	320.00'	18°49'30"
C19	63.82'	48.00'	76°11'00"
C20	20.00'	48.00'	23°52'38"
C21	43.82'	48.00'	52°18'22"
C22	68.86'	212.00'	18°36'39"
C23	22.32'	212.00'	6°01'54"
C24	46.54'	212.00'	12°34'45"
C25	85.26'	232.00'	21°03'20"
C26	22.46'	232.00'	5°32'51"
C27	62.79'	232.00'	15°30'29"
C28	105.79'	115.00'	52°42'28"
C29	124.19'	135.00'	52°42'28"

**LEGEND**

- R-A-2** RESIDENTIAL AGRICULTURAL  
2 ACRE MINIMUM
- R-5** OPEN AREA COMBINING ZONE  
RESIDENTIAL DEVELOPMENT
- W-1** WATERCOURSE, WATERSHED  
AND CONSERVATION



MAP NO. 2.2303

**CHANGE OF OFFICIAL ZONING PLAN  
AMENDING**

**MAP NO. 2, ORDINANCE NO. 348**

CHANGE OF ZONE CASE NO. 7694  
 ADOPTED BY ORDINANCE NO. 348.4642  
 ADOPTION DATE: MARCH 31, 2009

RIVERSIDE COUNTY BOARD OF SUPERVISORS