

SUBMITTAL TO THE BOARD OF SUPERVISORS
COUNTY OF RIVERSIDE, STATE OF CALIFORNIA

920 B



FROM: TLMA - Transportation Department

SUBMITTAL DATE:

March 30, 2009

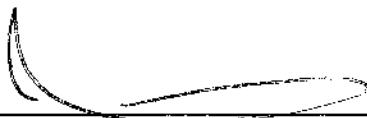
SUBJECT: Tract 30040-1
A Schedule "A" Subdivision in the Sun City Area
Extension of Time Agreements

RECOMMENDED MOTION: That the Board approve the attached agreements (which grant an extension of time for twelve months to complete improvements).

BACKGROUND: On September 18, 2007, the Board entered into agreements with Lennar Homes of California, Inc. for the improvement of streets and the installation of a water and sewer system within the above referenced subdivision. Accompanying these agreements were faithful performance securities posted by Hartford Fire Insurance Company as follows:

- \$1,043,500 - Bond #72BSBDJ4775 for the completion of street improvements
- \$199,500 - Bond #72BSBDJ4775 for the completion of the water system
- \$212,500 - Bond #72BSBDJ4775 for the completion of the sewer system
- \$45,300 - Bond #72BSBDJ4776 for the completion of the monumentation

The developer requests an extension of time for the completion of this project. Our records indicate that this project is approximately 90% completed for streets and utility work. The agreements for the extension of time have been approved by County Counsel. **(Continued)**



Juan C. Perez
Director of Transportation

HS:lf
Submittals: Vicinity Map
Road/Drainage Agrmts
Water System Agrmts
Sewer System Agrmts
Monumentation Agrmts

REVIEWED BY EXECUTIVE OFFICE

DATE 3/23/09
Tina Grande

FORM APPROVED COUNTY COUNSEL

BY: 
ELENA M. BOEVA
Departmental Concurrence

Policy

Consent

Dept Recomm.:
Per Exec. Ofc.:

Prev. Agn. Ref. 09/18/07 - 2.26 | District: 3 | Agenda Number:

The Honorable Board of Supervisors

RE: Tract 30040-1

Page 2 of 2

This project is located within the new City of Menifee boundaries. Since the original bonds and agreements were entered into by the County as the beneficiary, the County will continue to administer this agreement in consultation with the City.

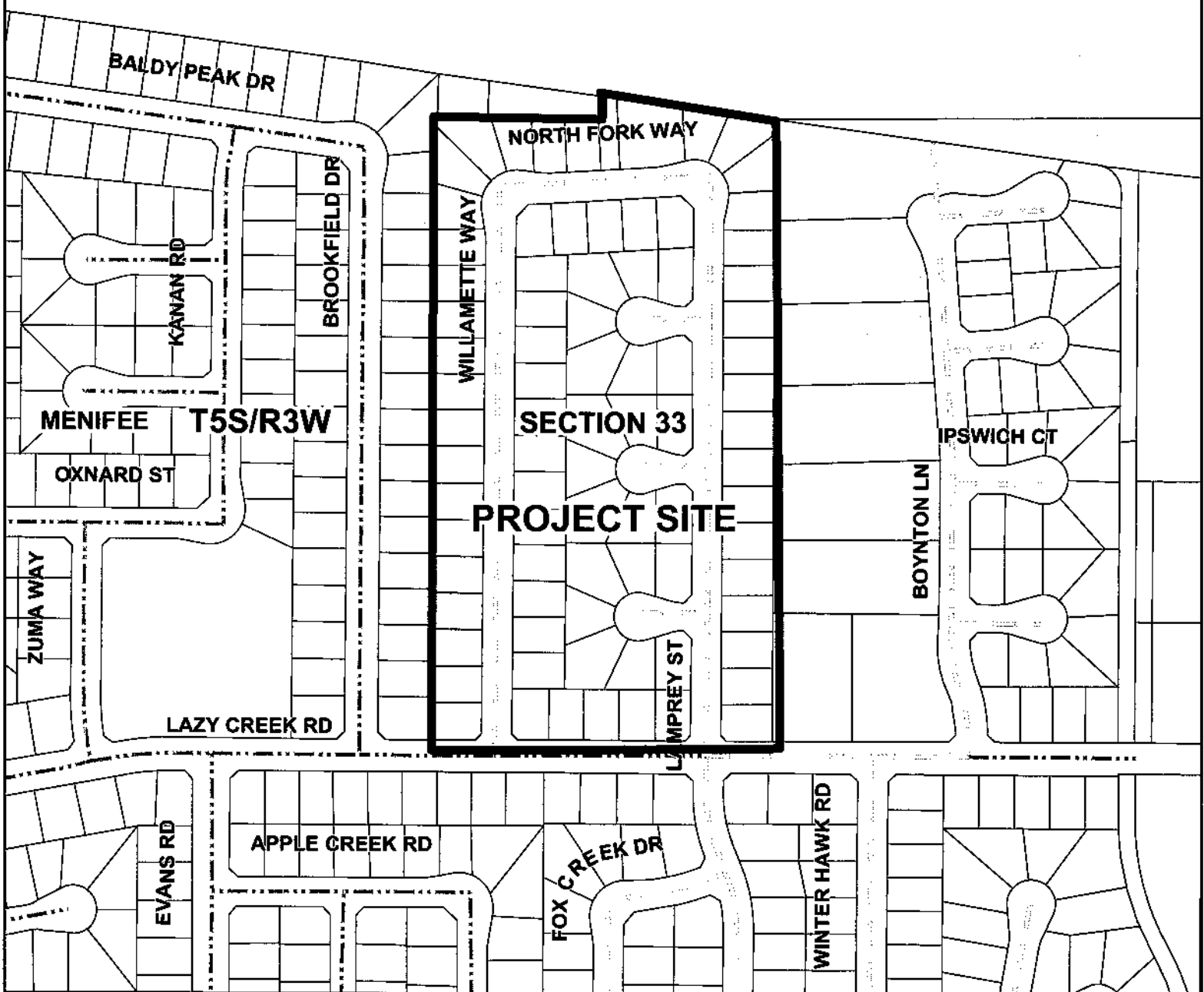
Vicinity Map

Tract 30040-1



The County of Riverside assumes no warranty or legal responsibility for the information contained on this map. Data and information represented on this map is subject to updates, modification and may not be complete or appropriate for all purposes. County GIS and other sources should be queried for the most current information. Do not copy or reuse this map.

SUPERVISORIAL DISTRICT 3



Roadway Legend

- | | | |
|--|-----------------------------|-------------|
| FEDERAL AID INTERSTATE; STATE HIGHWAYS | NON-COUNTY ROAD | HWY |
| F.A.S./F.A.U. MAINTAINED | CITY ROAD | INTERCHANGE |
| PAVED SURFACE MAINTAINED | UNDEFINED | INTERSTATE |
| GRAVELED SURFACE MAINTAINED | ABANDON | OFFRAMP |
| DIRT SURFACE MAINTAINED | VACATED | ONRAMP |
| ACCEPTED FOR PUBLIC USE | CITY OR WILDOMAR MAINTAINED | USHWY |