

**SUBMITTAL TO THE BOARD OF SUPERVISORS
COUNTY OF RIVERSIDE, STATE OF CALIFORNIA**



SUBMITTAL DATE:
April 6, 2009

FROM: TLMA - Transportation Department

SUBJECT: Conditional Use Permit 3422
A Subdivision in Menifee Area
Subdivision Improvement Agreements

RECOMMENDED MOTION: That the Board approve the attached Subdivision Improvement Agreements as approved by County Counsel.

BACKGROUND: The developer desires to enter into Improvement Agreements to guarantee the construction of the required improvements and has submitted Improvement Agreements and Securities which have been approved by County Counsel.

This project is located within the new City of Menifee boundaries. Since the original bonds and agreements were entered into by the County as the beneficiary, the County will continue to administer this agreement in consultation with the City.

Juan C. Perez
Director of Transportation

HS:lf
Submittals: Vicinity Map
Road/Drainage Agrmts
Water System Imprvmt Agrmts
Sewer System Imprvmt Agrmts

REVIEWED BY EXECUTIVE OFFICE
DATE 4/6/09
BY TLMA
Tina Grande
Departmental Concurrence
DATE
FORM APPROVED COUNTY COUNSEL
BY ELENA M. BOEVA
3/19/09
ELENAM. BOEVA
Dep't Recomm.:
Per Exec. Ofc.:

Policy

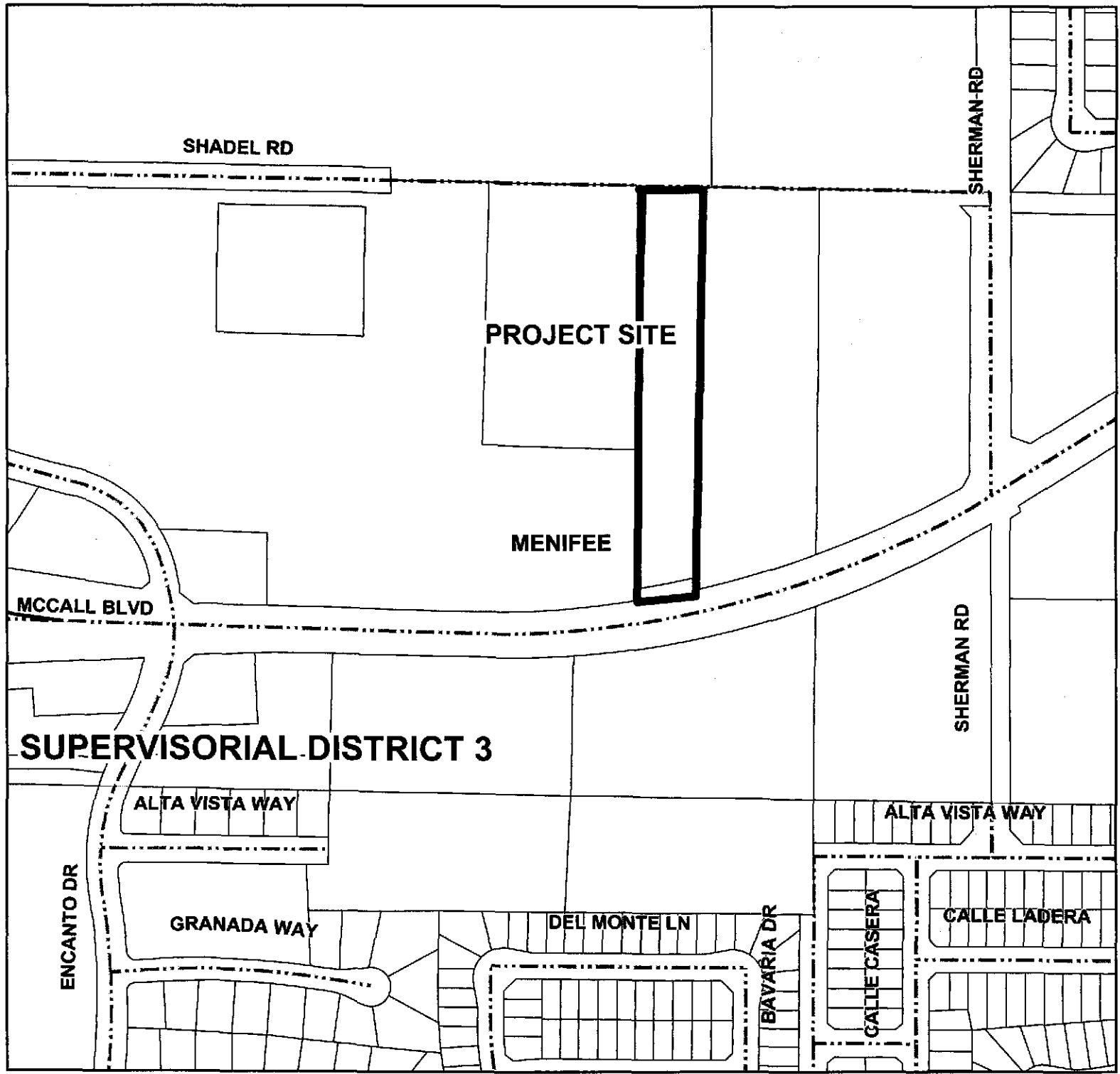
Consent

APR 13 2009

Prev. Agn. Ref. | District: 3 | Agenda Number:



Conditional Use Permit 3422



Roadway Legend

- | | | |
|--|-----------------------------|-------------|
| FEDERAL AID INTERSTATE; STATE HIGHWAYS | NON-COUNTY ROAD | HWY |
| F.A.S./F.A.U. MAINTAINED | CITY ROAD | INTERCHANGE |
| PAVED SURFACE MAINTAINED | UNDEFINED | INTERSTATE |
| GRAVELED SURFACE MAINTAINED | ABANDON | OFFRAMP |
| DIRT SURFACE MAINTAINED | VACATED | ONRAMP |
| ACCEPTED FOR PUBLIC USE | CITY OR WILDOMAR MAINTAINED | USHWY |