

SUBMITTAL TO THE BOARD OF SUPERVISORS
COUNTY OF RIVERSIDE, STATE OF CALIFORNIA

639 A



FROM: County Counsel

SUBMITTAL DATE: April 27, 2009

SUBJECT: Ordinance No. 348.4648

RECOMMENDED MOTION: That the Board of Supervisors adopt Ordinance No. 348.4648 amending the zoning in the Rancho California Area shown on Map No. 2.2305 Change of Zone Case No. 7484.

BACKGROUND: Change of Zone Case No. 7484 was tentatively approved by the Board of Supervisors on March 17, 2009.

Michelle Clark for
PAMELA J. WALLS
County Counsel

C.E.O. RECOMMENDATION:

APPROVE

BY: *Tina Grande*
Tina Grande

County Executive Office Signature

Policy
 Policy

Consent
 Consent

Department Recommendation:
Per Executive Office:

Prev. Agn. ref.

Dist. FIRST

AGENDA NO.

1 ORDINANCE NO. 348.4648

2 AN ORDINANCE OF THE COUNTY OF RIVERSIDE
3 AMENDING ORDINANCE NO. 348 RELATING TO ZONING
4

5 The Board of Supervisors of the County of Riverside Ordains as Follows:

6 Section 1. Section 4.1 of Ordinance No. 348, and official Zoning Plan Map No. 2, as
7 amended, are further amended by placing in effect in the Rancho California Area, the zone or zones as
8 shown on the map entitled "Change of Official Zoning Plan Amending Ordinance No. 348, Map No.
9 2.2305, Change of Zone Case No. 7484" which map is made a part of this ordinance.

10 Section 2. This ordinance shall take effect 30 days after its adoption.

11 BOARD OF SUPERVISORS OF THE COUNTY
12 OF RIVERSIDE, STATE OF CALIFORNIA

13
14 By: _____
Chairman, Board of Supervisors

15 ATTEST:
16 Clerk of the Board

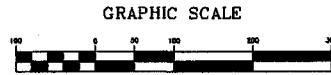
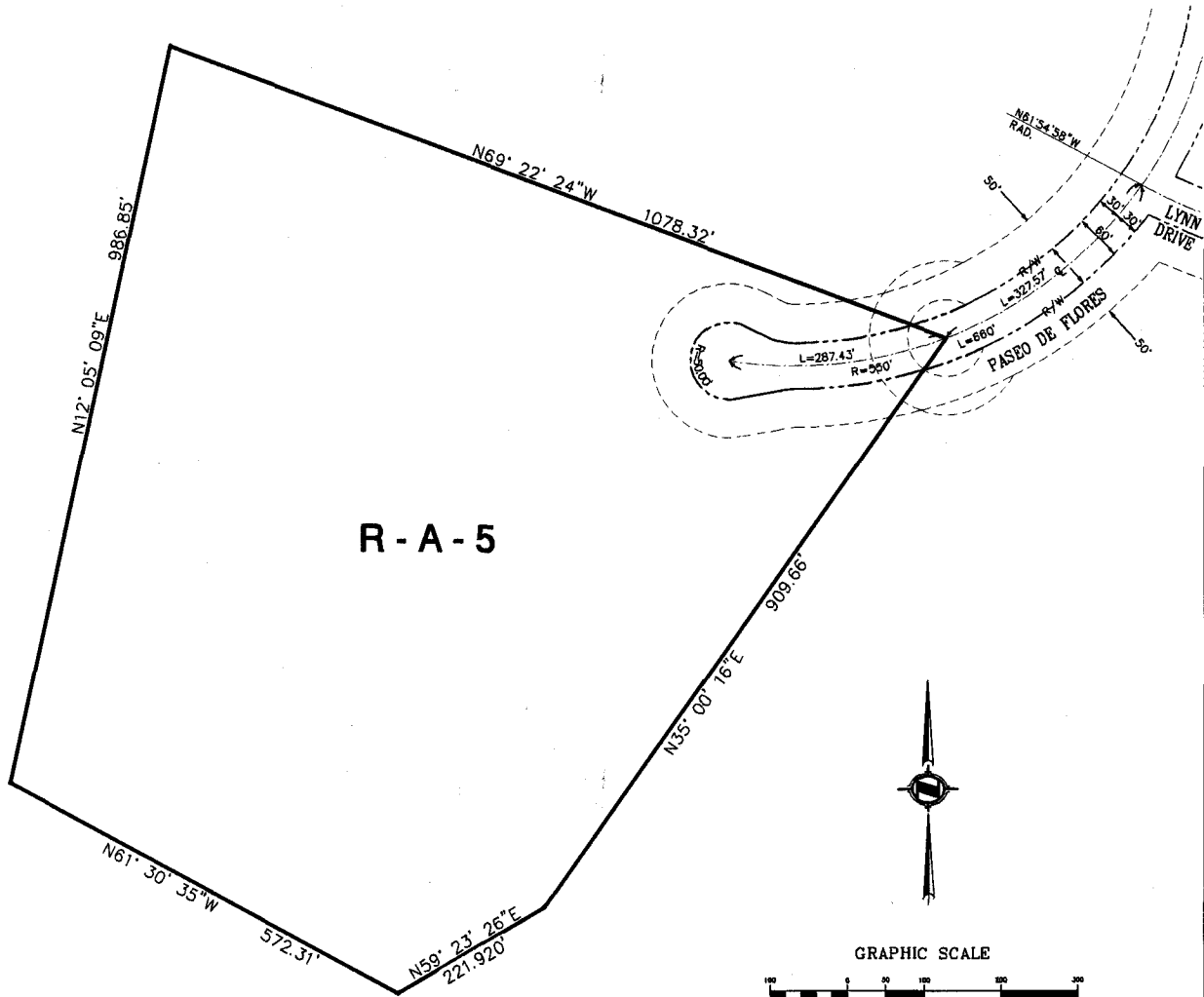
17
18 By: _____
19 Deputy

20 (SEAL)

21
22 APPROVED AS TO FORM
23 April 29, 2009

24
25 By:  _____
26 MICHELLE CLACK
27 Deputy County Counsel

RANCHO CALIFORNIA AREA
POR. SEC. 21, T.7S., R.4W.



(IN FEET)
1 inch = 100 ft.

LEGEND

R-A-5 - RESIDENTIAL AGRICULTURAL
5 ACRE MINIMUM

MAP NO. 2.2305

CHANGE OF OFFICIAL ZONING PLAN
AMENDING

MAP NO. 2 ORDINANCE NO. 348
CHANGE OF ZONE CASE NO. 7484

ADOPTED BY ORDINANCE NO. 348.4648
MAY 12, 2009

RIVERSIDE COUNTY BOARD OF SUPERVISORS

ASSESSORS PARCEL NO. 930-310-003