

**SUBMITTAL TO THE BOARD OF SUPERVISORS
COUNTY OF RIVERSIDE, STATE OF CALIFORNIA**

310 B



FROM: TLMA - Transportation Department

SUBMITTAL DATE:
September 21, 2009

SUBJECT: Parcel Map 30328
A Schedule "E" Subdivision in the Perris Area
ONE YEAR GUARANTEE AND MAINTENANCE AGREEMENTS

RECOMMENDED MOTION: That the Board approve the attached One Year Guarantee and Maintenance Agreements as approved by County Counsel and authorize the Chairman to sign these agreements for Parcel Map 30328.

BACKGROUND: Improvements were completed for this project on April 7, 2009. The developer desires to enter into Maintenance Agreements to guarantee a one year maintenance of the improvements and has submitted agreements and securities which have been approved by County Counsel.

REVIEWED BY EXECUTIVE OFFICE

DATE 9/15/09

Departmental Concurrence Tina Grande

FORM APPROVED COUNTY COUNSEL

BY: Elena M. Boeva DATE 8/14/09

ELENA M. BOEVA

Juan C. Perez
Director of Transportation

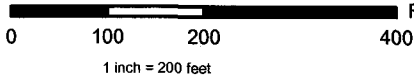
HS:lf
Submittals: Vicinity Map
Road/Drainage Maint Agrmts
Water System Imprv Agrmts
Sewer System Imprv Agrmts
Monumentation Agreements

Policy

Consent

Dep't Recomm.:
Per Exec. Ofc.:

Prev. Agn. Ref. 06/19/07 - 2.33 | District: 1 | Agenda Number:

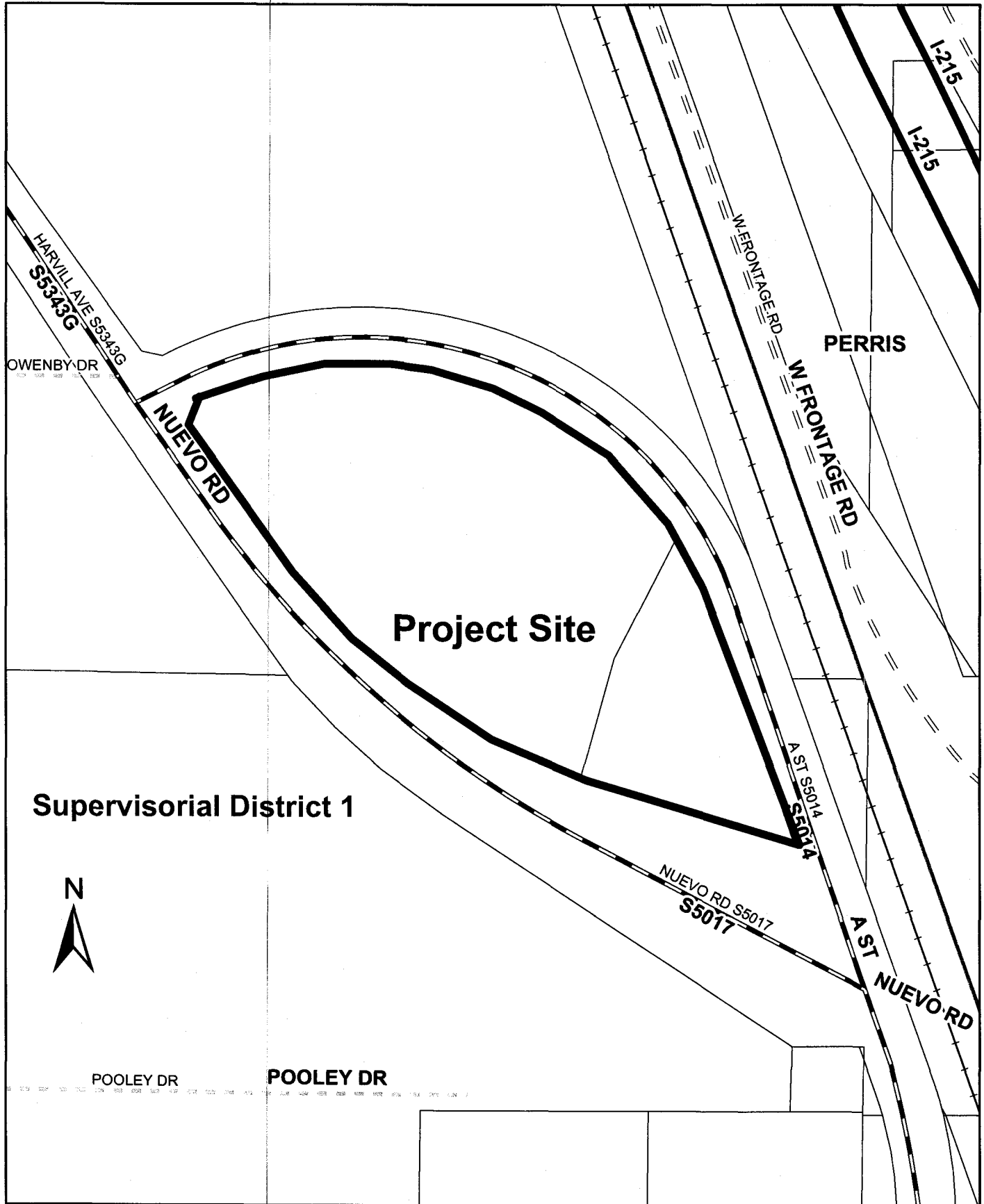


Parcel Map 30328

Vicinity Map



The County of Riverside assumes no warranty or legal responsibility for the information contained on this map. Data and information represented on this map is subject to updates, modifications and may not be complete or appropriate for all purposes. County GIS and other sources should be queried for the most current information. Do not copy or resell this map.



Supervisorial District 1



POOLEY DR

POOLEY DR