

**SUBMITTAL TO THE BOARD OF SUPERVISORS
COUNTY OF RIVERSIDE, STATE OF CALIFORNIA**

312B



FROM: TLMA - Transportation Department

SUBMITTAL DATE:
September 17, 2009

SUBJECT: Approval of **Parcel Map 34049**
A Schedule "E" Subdivision in the Mira Loma Area

RECOMMENDED MOTION: That the Board approve the final map and authorize the Chairman to sign the map for Parcel Map 34049.

BACKGROUND: This map complies in all respects with the provisions of Division 3 of Title 15 of the Government Code and applicable local ordinances.

REVIEWED BY EXECUTIVE OFFICE

DATE 9/16/09
Tina Grande
Department of Transportation

Juan C. Perez
Director of Transportation

HS:lf
Submittals: Final Map

Policy

Consent

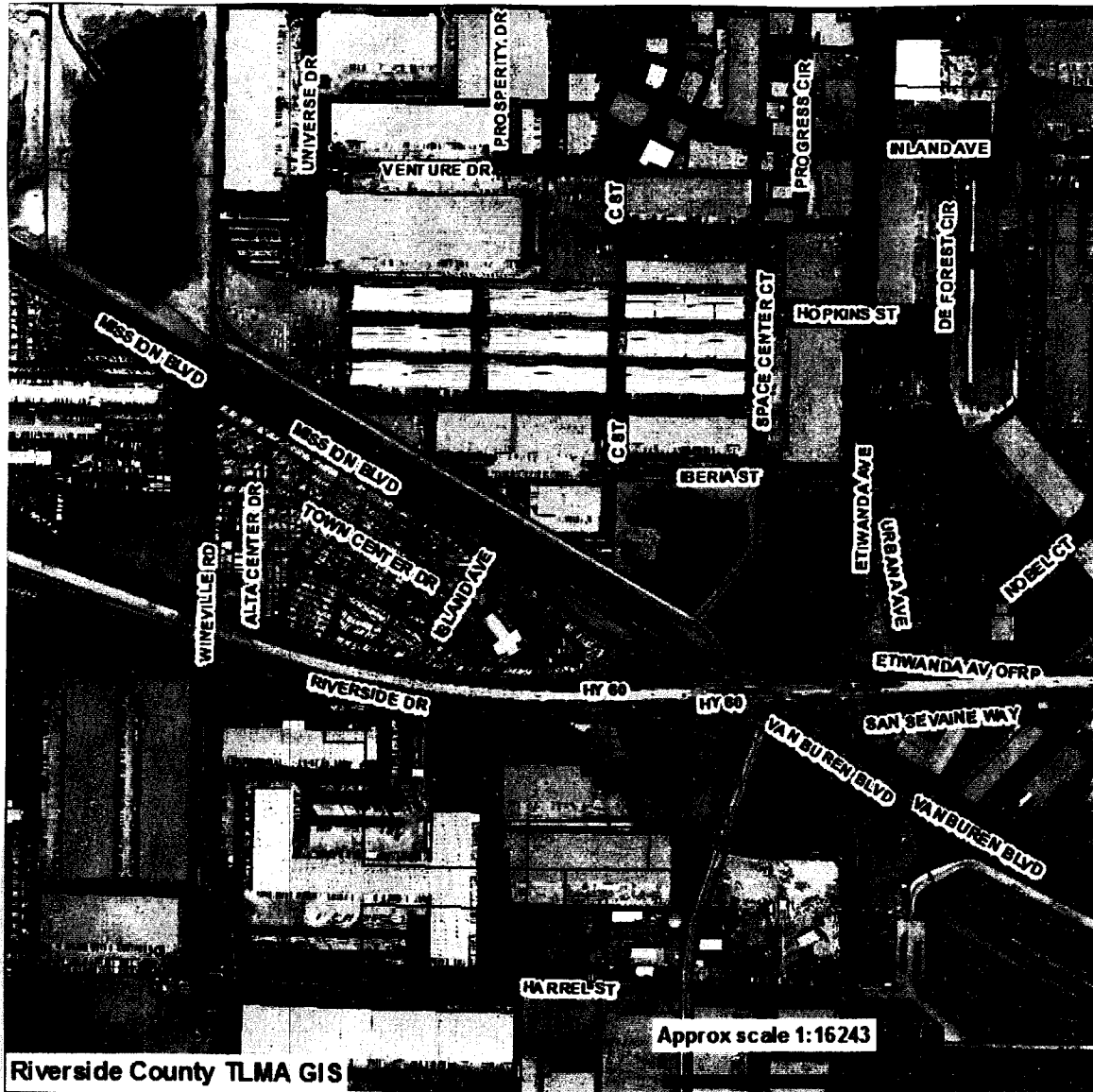
Dept Recomm.:
Per Exec. Ofc.:

Prev. Agn. Ref.

District: 2

Agenda Number:

2.24



VICINITY MAP

PM-34049

SEC. 5 TWP. 2S RNG. 6W

Supervisory District: 2 (John Tavaglione)