

SUBMITTAL TO THE BOARD OF SUPERVISORS
COUNTY OF RIVERSIDE, STATE OF CALIFORNIA

349 B



SUBMITTAL DATE:
September 21, 2009

FROM: TLMA - Transportation Department


SUBJECT: Approval of **Parcel Map 34178**
A Schedule "E" Subdivision in the Mira Loma Area

RECOMMENDED MOTION: That the Board approve the final map and authorize the Chairman to sign the map for Parcel Map 34178.

BACKGROUND: This map complies in all respects with the provisions of Division 3 of Title 15 of the Government Code and applicable local ordinances.

REVIEWED BY EXECUTIVE OFFICE
DATE 9/22/09
Tina Grande

Departmental Concurrence



Juan C. Perez
Director of Transportation

HS:lf
Submittals: Final Map

Dep't Recomm.: Consent Policy

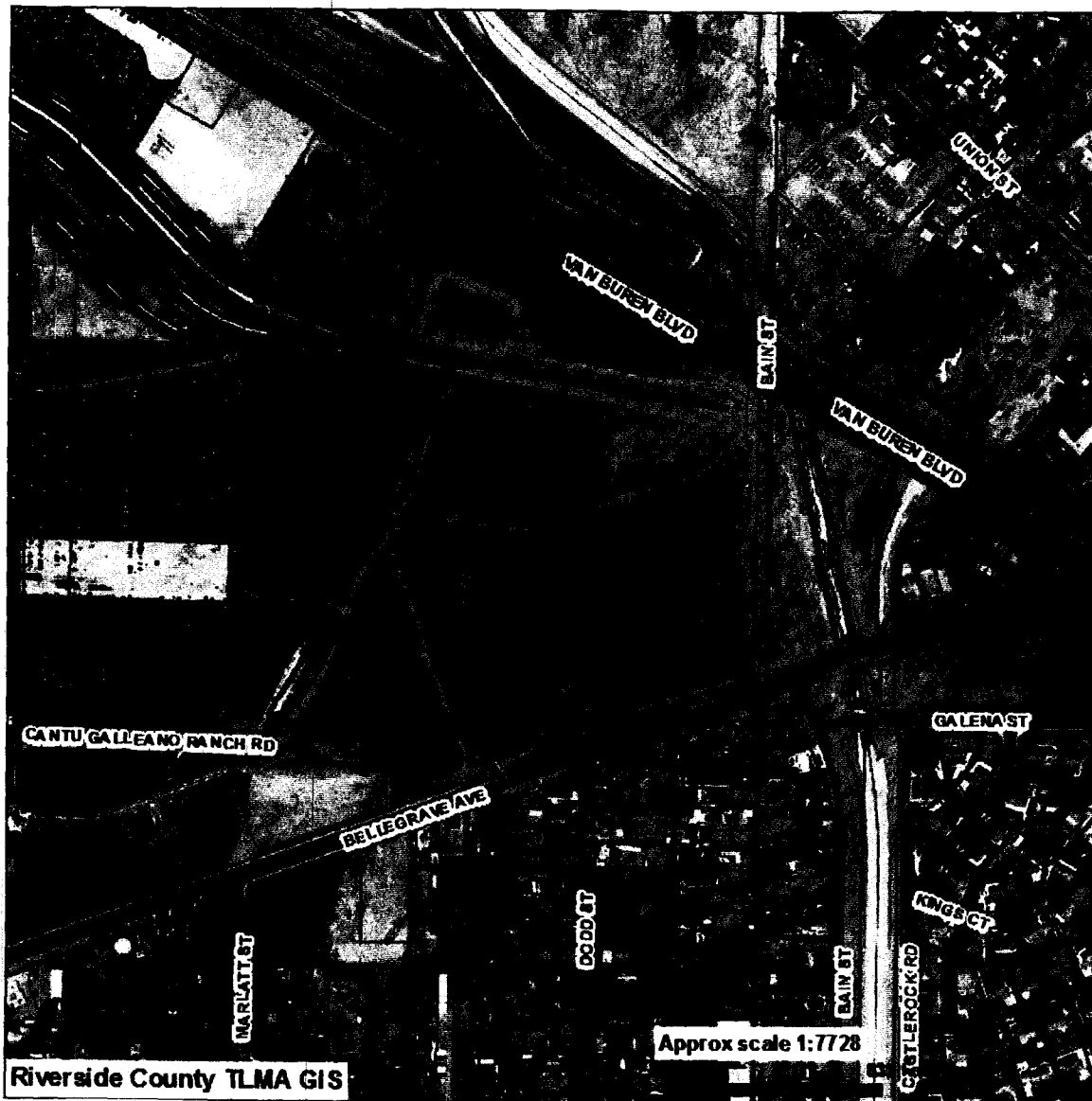
Per Exec. Ofc.: Consent Policy

Prev. Agn. Ref.

District: 2

Agenda Number:

2.25



VICINITY MAP

PM 34178

SEC.9 TWP.2S RNG. 6W

Supervisory District: 2 (John Tavaglione)