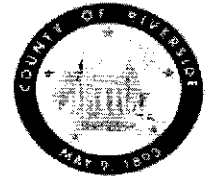


**SUBMITTAL TO THE BOARD OF SUPERVISORS
COUNTY OF RIVERSIDE, STATE OF CALIFORNIA**



SUBMITTAL DATE:
October 1, 2009

FROM: TLMA - Transportation Department

SUBJECT: Approval of **Parcel Map 35587**
A Schedule "E" Subdivision in the Eastvale area.

RECOMMENDED MOTION: That the Board of Supervisors:

1. Approve the final map and;
2. Authorize the Chairman to sign the map for Parcel Map 35587.

BACKGROUND: This map complies in all respects with the provisions of Division 3 of Title 15 of the Government Code and applicable local ordinances.

Dept. of Detail Communication

APPROVE
BY: *Jennifer L. Sargent*
Jennifer L. Sargent

HS:lf
Submittals: Final Map

Juan C. Perez
Director of Transportation

Policy
 Policy

Consent
 Consent

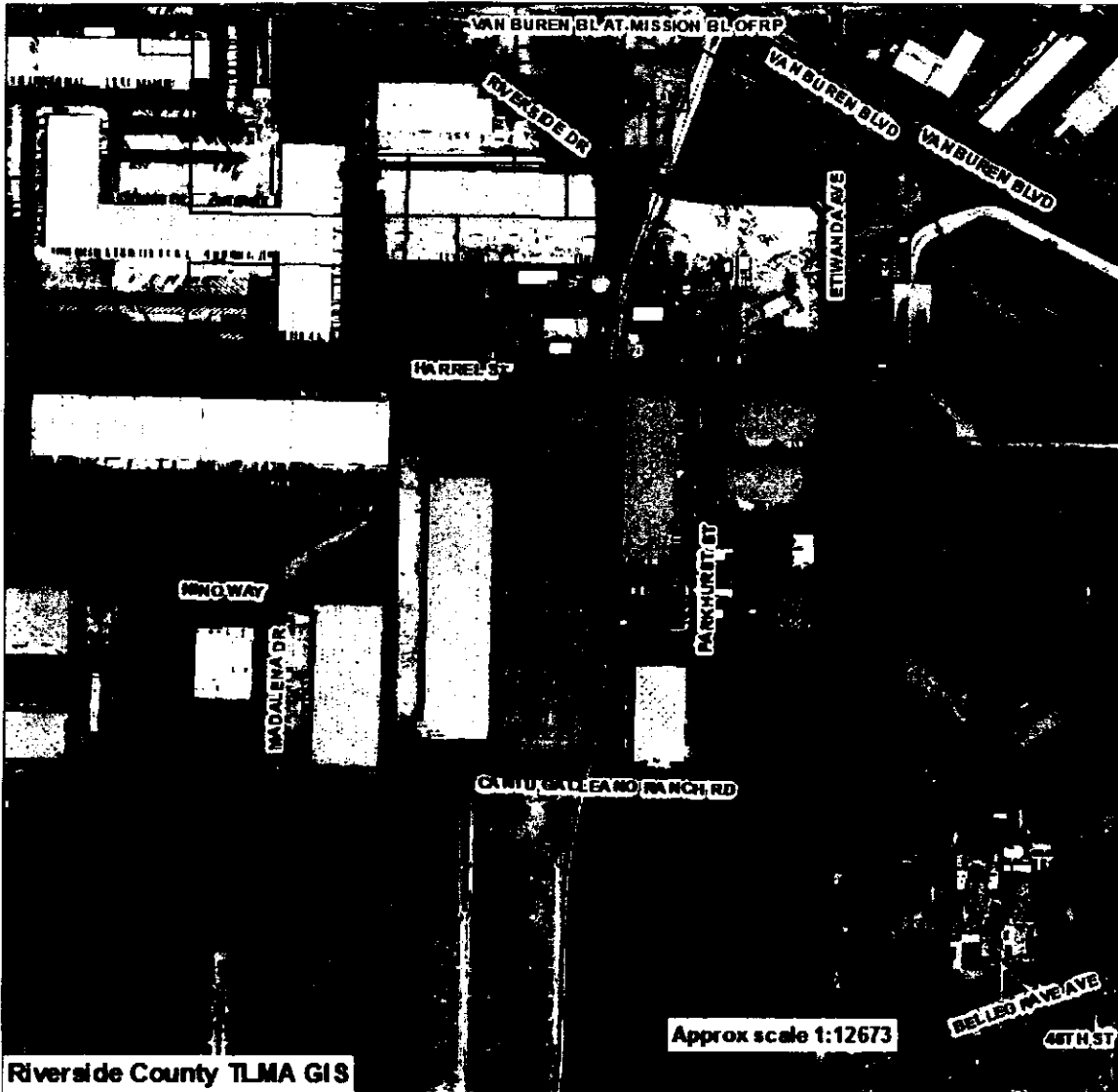
Dept't Recomm.:
Per Exec. Ofc.:

Prev. Agn. Ref.

District: 2

Agenda Number:

2.20



VICINITY MAP

PM-35587

SEC. 8 TWP. 2S RNG. 6W

Supervisorial District: 2 (John Tavaglione)