

607A

**SUBMITTAL TO THE BOARD OF SUPERVISORS  
COUNTY OF RIVERSIDE, STATE OF CALIFORNIA**



**FROM:** County Counsel

**SUBMITTAL DATE:**  
December 23, 2009

**SUBJECT:** Ordinance No. 348.4683

**RECOMMENDED MOTION:** That the Board of Supervisors adopt Ordinance No. 348.4683 amending the zoning in the Rubidoux District shown on Map No. 15.057 Change of Zone Case No. 7626.

**BACKGROUND:** Change of Zone Case No. 7626 was tentatively approved by the Board of Supervisors on December 22, 2009.

Departmental Concurrence

Larisa McKenna for

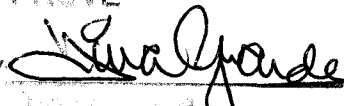
Pamela J. Walls, County Counsel

<b>FINANCIAL DATA</b>	Current F.Y. Total Cost:	\$ 0	In Current Year Budget:	N/A
	Current F.Y. Net County Cost:	\$ 0	Budget Adjustment:	N/A
	Annual Net County Cost:	\$ 0	For Fiscal Year:	N/A

<b>SOURCE OF FUNDS:</b>	Positions To Be Deleted Per A-30	<input type="checkbox"/>
	Requires 4/5 Vote	<input type="checkbox"/>

**C.E.O. RECOMMENDATION:**

APPROVE

BY 

County Executive Office Signature

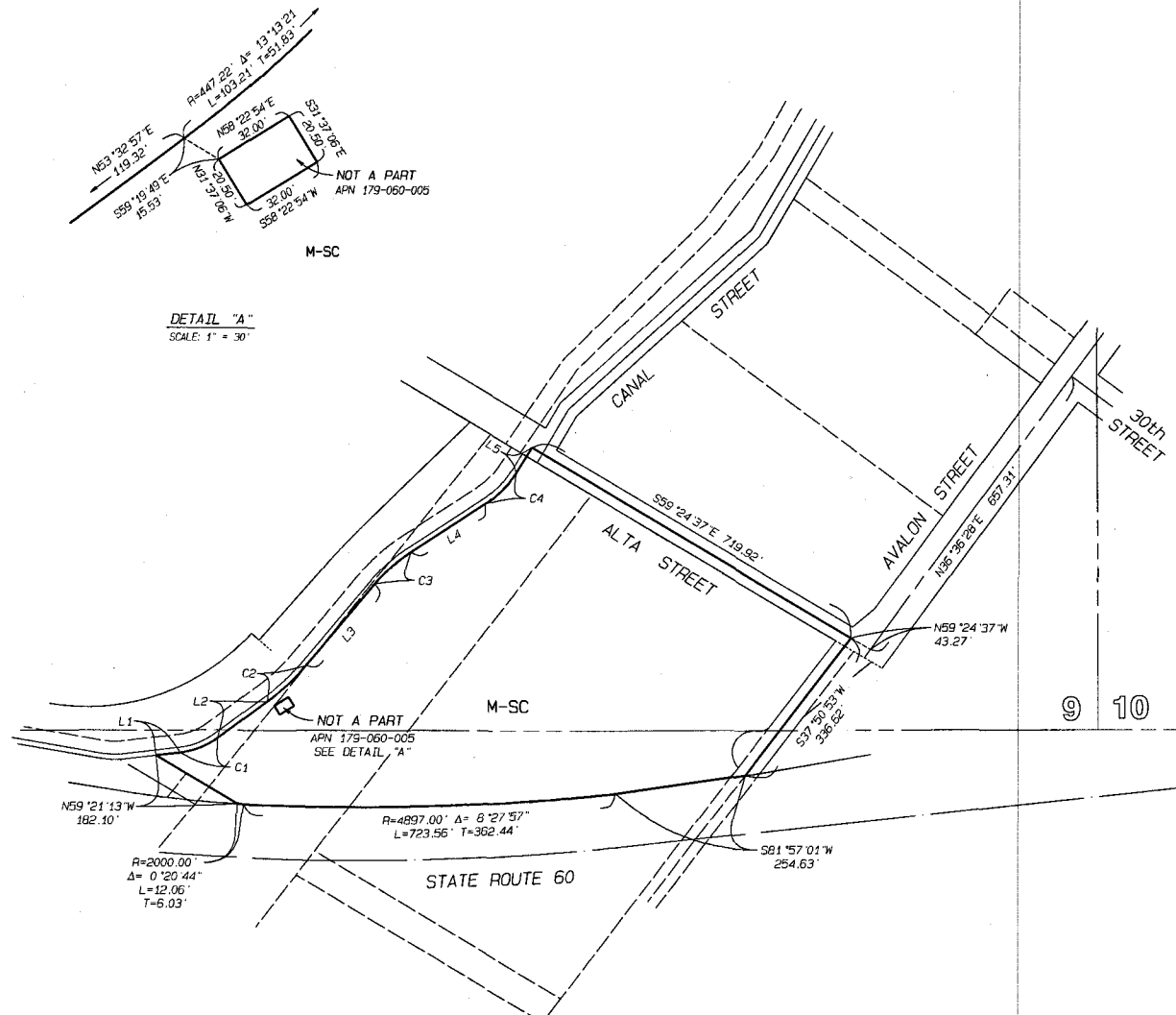
- Dept't Recomm.:  Consent
- Per Exec. Ofc.:  Consent
- Policy
- Policy

Prev. Agn. Ref.: | District: Second | Agenda Number:

2.5



SEC. 9, T.2 S., R.5 W. S.B.M.  
 PORTION OF RUBIDOUX RANCHO



LINE DATA

LINE	BEARING	DISTANCE
L1	N83°23'06"E	47.04
L2	N53°32'57"E	119.32
L3	N40°19'36"E	206.55
L4	N57°11'27"E	172.08
L5	N31°56'32"E	57.85

CURVE DATA

CURVE	RADIUS	DELTA	LENGTH	TANGENT
C1	152.78'	29°50'09"	79.56	40.70
C2	447.22'	13°13'21"	103.21	51.83
C3	313.78'	16°51'51"	92.36	45.51
C4	203.18'	24°32'03"	87.00	44.18

LEGEND

M-SC MANUFACTURING - SERVICE COMMERCIAL

MAP NO. 15.057

CHANGE OF OFFICIAL ZONING PLAN  
 RUBIDOUX DISTRICT

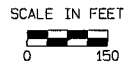
CHANGE OF ZONE CASE NO. 07626

AMENDING ORDINANCE NO. 348

ADOPTED BY ORDINANCE NO. 348.4683

JANUARY 12, 2010

RIVERSIDE COUNTY BOARD OF SUPERVISORS



C:\Users\user\Desktop\Change of Zone\15.057.dwg