

608A

**SUBMITTAL TO THE BOARD OF SUPERVISORS
COUNTY OF RIVERSIDE, STATE OF CALIFORNIA**



FROM: County Counsel

SUBMITTAL DATE:
December 23, 2009

SUBJECT: Ordinance No. 348.4684

RECOMMENDED MOTION: That the Board of Supervisors adopt Ordinance No. 348.4684 amending the zoning in the Rubidoux District shown on Map No. 15.058 Change of Zone Case No. 7600.

BACKGROUND: Change of Zone Case No. 7600 was tentatively approved by the Board of Supervisors on December 22, 2009.

Departmental Concurrence

Larisa McKenna for

Pamela J. Walls, County Counsel

FINANCIAL DATA	Current F.Y. Total Cost:	\$ 0	In Current Year Budget:	N/A
	Current F.Y. Net County Cost:	\$ 0	Budget Adjustment:	N/A
	Annual Net County Cost:	\$ 0	For Fiscal Year:	N/A

SOURCE OF FUNDS:	Positions To Be Deleted Per A-30	<input type="checkbox"/>
	Requires 4/5 Vote	<input type="checkbox"/>

C.E.O. RECOMMENDATION:

APPROVE

BY:
Tina Grande

County Executive Office Signature

- Dept't Recomm.: Consent Policy
- Per Exec. Ofc.: Consent Policy

Prev. Agn. Ref.: | **District:** Second | **Agenda Number:**

2.6

1 ORDINANCE NO. 348.4684

2 AN ORDINANCE OF THE COUNTY OF RIVERSIDE

3 AMENDING ORDINANCE NO. 348 RELATING TO ZONING

4 The Board of Supervisors of the County of Riverside ordains as follows:

5 Section 1. Section 4.1 of Ordinance No. 348, and Rubidoux District Zoning Plan Map
6 No. 15. as amended, are further amended by placing in effect in the zone or zones as shown on the map
7 entitled "Change of Official Zoning Plan, Rubidoux District, Map No. 15.058 Change of Zone Case No.
8 7600," which map is made a part of this ordinance.

9 Section 2. This ordinance shall take effect 30 days after its adoption.

10
11 BOARD OF SUPERVISORS OF THE COUNTY
12 OF RIVERSIDE, STATE OF CALIFORNIA

13
14 By: _____
Chairman, Board of Supervisors

15 ATTEST:

16 Clerk of the Board

17
18 By: _____
Deputy

19
20 (SEAL)

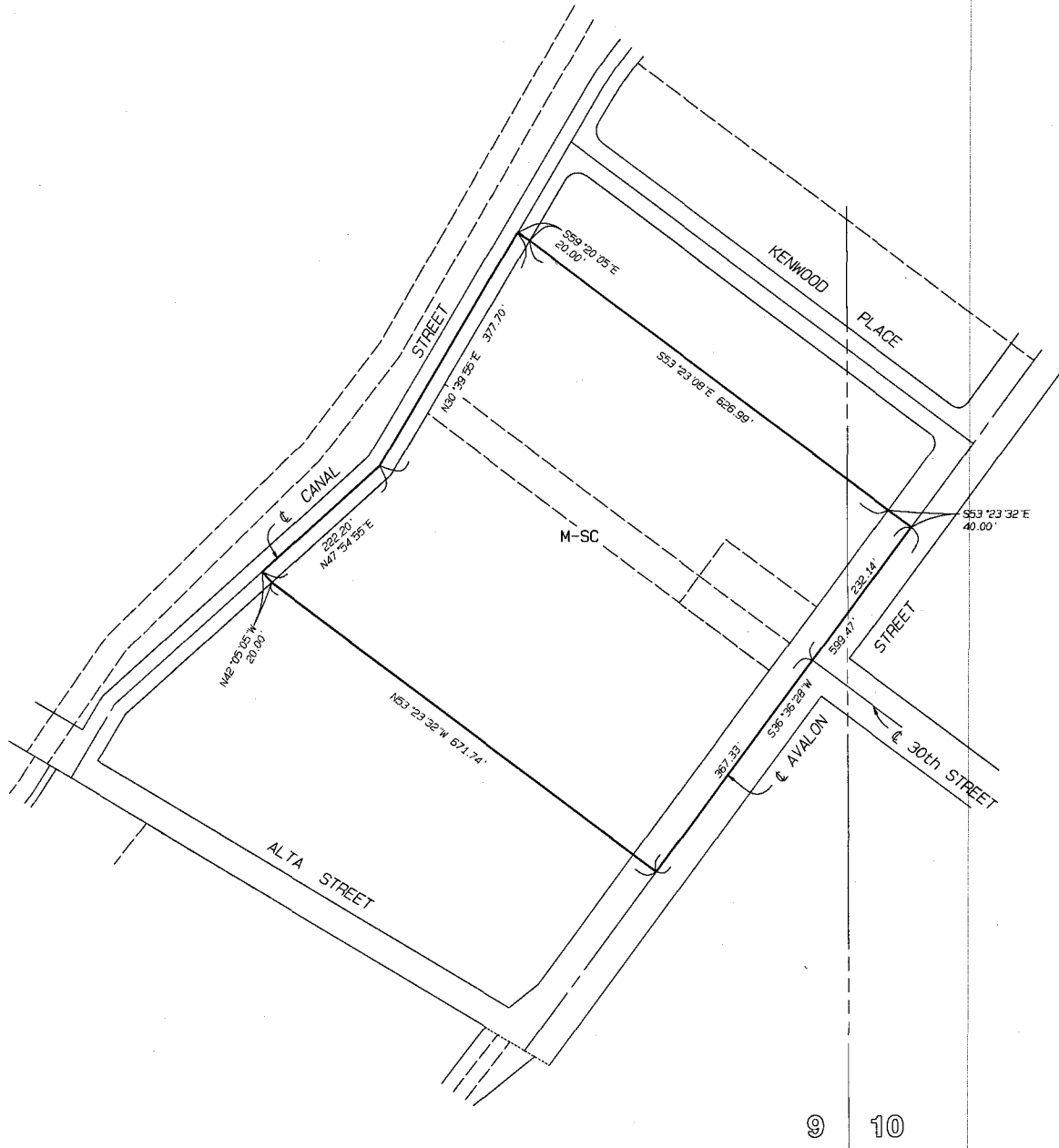
21
22 APPROVED AS TO FORM
23 December 27, 2009

24 By: Larisa R-Mckenna
25 LARISA R-MCKENNA
26 Deputy County Counsel

27 LRM/mdk
12/29/09

28 G:\PROPERTY\MDUSEK\CZ ZONING ORD & FORM11\FORMAT.348\4684.DOC

SEC. 9 & 10, T.2 S., R.5 W. S.B.M.
 PORTION OF RUBIDOUX RANCHO



LEGEND

M-SC

MANUFACTURING - SERVICE COMMERCIAL

MAP NO. 15.058

CHANGE OF OFFICIAL ZONING PLAN
 RUBIDOUX DISTRICT

CHANGE OF ZONE CASE NO. 07600

AMENDING ORDINANCE NO. 348

ADOPTED BY ORDINANCE NO. 348.4684

JANUARY 12, 2010

RIVERSIDE COUNTY BOARD OF SUPERVISORS



SCALE IN FEET

