

**SUBMITTAL TO THE BOARD OF SUPERVISORS  
COUNTY OF RIVERSIDE, STATE OF CALIFORNIA**

423A



**FROM:** TLMA - Transportation Dept.

**SUBMITTAL DATE:**  
June 30, 2010

**SUBJECT:** Landscaping and Lighting Maintenance District No. 89-1-Consolidated,  
Annexation of Zone 145 (Mead Valley).

**RECOMMENDED MOTION:** That the Board:

1. Adopt Resolution No. 2010-179, Resolution of the County of Riverside ordering the annexation, and confirming the diagram and assessment of Zone 145 of Landscaping and Lighting Maintenance District No. 89-1-Consolidated, and levying assessments on all assessable lots and parcels of land therein for fiscal year 2010-11.
2. Direct the Auditor-Controller's office to establish an interest-bearing sub-fund 20300 to receive deposits and interest thereon from Zone 145 of Landscaping and Lighting

Juan C. Perez  
Director of Transportation

MH:jp

FORM APPROVED COUNTY COUNSEL  
BY: Dale A. Gardner  
DATE: 6/10/10  
Departmental Concurrence

<b>FINANCIAL DATA</b>	Current F.Y. Total Cost:	\$0	In Current Year Budget:	N/A
	Current F.Y. Net County Cost:	\$0	Budget Adjustment:	N/A
	Annual Net County Cost:	\$0	For Fiscal Year:	2009-10
<b>SOURCE OF FUNDS:</b> Landscaping and Lighting Maintenance District No. 89-1-Consolidated – 100%			<b>Positions To Be Deleted Per A-30</b>	<input type="checkbox"/>
			<b>Requires 4/5 Vote</b>	<input type="checkbox"/>

**C.E.O. RECOMMENDATION:**

APPROVE

BY:   
Tina Grande

**County Executive Office Signature**

Policy  
 Policy

Consent  
 Consent

Dep't Recomm.:  
 Per Exec. Ofc.:

**Prev. Agn. Ref.** 04/20/10, 3.74 | **District:** 1 | **Agenda Number:**  
 06/08/10, 9.16

3.84

The Honorable Board of Supervisors

RE: Landscaping and Lighting Maintenance District No. 89-1-Consolidated, Annexation of Zone 145 (Mead Valley).

June 30, 2010

Page 2 of 2

Maintenance District No. 89-1-Consolidated; in accordance with Section 22655-22656 of the Streets and Highways Code.

**BACKGROUND:** On June 8, 2010, a public hearing was held to receive all testimony regarding the annexation of Zone 145 to Landscaping and Lighting Maintenance District No. 89-1-Consolidated ("L&LMD No. 89-1-C"). After closing the public hearing, the Board directed the Director of Transportation, or his/her designee, to tally the assessment ballots that had been received prior to the close of the hearing. The assessment ballots were to be tabulated on June 9, 2010 at 10:00 a.m. in Conference Room B on the 8<sup>th</sup> Floor of the County Administrative Center. The tabulation shows that votes representing 2 parcels out of a possible 2 were cast, and that 2 votes (or 100%) were cast in favor of the annexation of Zone 145 to L&LMD No. 89-1-C and the levy and enrollment of the special assessment.

The proposed budget for fiscal year 2010-11 for Zone 145 (within public rights-of-way located at the intersection of Harvill Ave and Daytona Cv) is \$2,888 that will result in an assessment for fiscal year 2010-11 within Zone 145 of \$103.76 per acre. Zone 145 includes 15 commercial parcels totaling 27.83 acres. The annual assessment will be adjusted annually by the greater of 2% or the cumulative percentage increase in the CPI-U for "electricity", if any, as it stands as of March of each year over the base index for March of 2010.

Adoption of Resolution No. 2010-179 confirms the assessment levy as indicated in the Engineer's Report for fiscal year 2010-11 for Zone 145 of L&LMD No. 89-1-C and orders the placement of the annual assessment on the County's Assessment Roll for fiscal year 2010-11.

**RESOLUTION NO. 2010-179**

**RESOLUTION OF THE BOARD OF SUPERVISORS OF THE COUNTY OF RIVERSIDE ORDERING THE ANNEXATION OF ZONE 145 TO LANDSCAPING AND LIGHTING MAINTENANCE DISTRICT NO. 89-1-CONSOLIDATED OF THE COUNTY OF RIVERSIDE AND CONFIRMING THE DIAGRAM AND ASSESSMENT FOR ZONE 145 OF LANDSCAPING AND LIGHTING MAINTENANCE DISTRICT NO. 89-1-CONSOLIDATED AND LEVYING ASSESSMENTS ON ALL ASSESSABLE LOTS AND PARCELS OF LAND THEREIN FOR THE FISCAL YEAR 2010-11**

**WHEREAS**, on April 20, 2010 the Board of Supervisors (hereinafter the "Board of Supervisors") of the County of Riverside (hereinafter the "County") adopted Resolution No. 2010-100, pursuant to Section 22608 and Section 22585 et seq. of the Streets and Highways Code, declaring the intention of the Board of Supervisors to order the annexation of Zone 145 to Landscaping and Lighting Maintenance District No. 89-1-Consolidated (hereinafter "L&LMD No. 89-1-C") of the County pursuant to the Landscaping and Lighting Act of 1972, being Part 2 (commencing with Section 22500) of Division 15 of the Streets and Highways Code, and giving notice of and setting a public hearing for 9:30 a.m. on June 8, 2010 at the meeting room of the Board of Supervisors and requiring that the notice of the public hearing and assessment ballots be mailed to all owners of property within Zone 145 as shown on the equalized tax roll; and

**WHEREAS**, notice of said public hearing was duly published and mailed as required by Resolution No. 2010-100, Section 22626 of the Streets and Highways Code and Sections 53753 and 54954.6 of the Government Code and the assessment ballots were timely mailed to all owners of property within said Zone 145 as shown on the equalized tax roll; and

**WHEREAS**, at 9:30 a.m. on June 8, 2010, as set forth in Resolution No. 2010-100, the Board of Supervisors held a public hearing and afforded all interested persons an opportunity to be heard, and considered all oral statements and all written protest or communications made or filed by any interested persons, closed the public hearing and directed the Director of Transportation, or his designee, as an impartial person having no vested interest in the annexation of Zone 145 to L&LMD

FORM APPROVED COUNTY COUNSEL

BY: *W. Gardner*

DATE: 6/10/10

DATE: A. GARDNER

1 No. 89-1-C as required by Section 53753(e) of the Government Code to tally the assessment ballots  
2 that had been received prior to the close of the public hearing; and

3 **WHEREAS**, the tally of the assessment ballots show that assessment ballots were timely  
4 received from the owner of 2 parcels out of a possible 2 parcels and that 2 parcels (100 percent of the  
5 assessment ballots received) voted in favor of annexation of Zone 145 to L&LMD No. 89-1-C and the  
6 levy of an annual assessment in said Zone 145 beginning fiscal year 2010-11; and

7 **WHEREAS**, the Board of Supervisors may proceed, pursuant to Section 22631 of the Streets  
8 and Highways Code, to adopt a resolution confirming the diagram and assessment, either as originally  
9 proposed, or as changed by the Board of Supervisors, and the adoption of such a resolution shall  
10 constitute the levy of an assessment on all assessable lots and parcels of land within Zone 145 of  
11 L&LMD No. 89-1-C beginning fiscal year 2010-11.

12 **NOW, THEREFOR, BE IT RESOLVED, FOUND, DETERMINED AND ORDERED** by the  
13 Board of Supervisors of the County in regular session on July 13, 2010 as follows:

14 **Section 1. Findings.** The Board of Supervisors finds:

- 15 (a) the proceeding recitals are correct;
- 16 (b) compliance has been had with all the requirements of the Landscaping and  
17 Lighting Act of 1972, being Part 2 (commencing with Section 22500) of Division  
18 15 of the Streets and Highways Code, and Sections 53753 and 54954.6 of the  
19 Government Code;
- 20 (c) a majority protest to the annexation of and annual assessment of Zone 145 of  
21 L&LMD No. 89-1-C has not been filed;
- 22 (d) the tally of the assessment ballots timely received was 100 percent voted in  
23 favor of the annexation of Zone 145 to L&LMD No. 89-1-C and the levy of an  
24 annual assessment beginning fiscal year 2010-11, and 0 percent voted no;
- 25 (e) the Board of Supervisors may proceed to adopt a resolution ordering the  
26 annexation of Zone 145 to L&LMD No. 89-1-C;

1 (f) the Board of Supervisors may proceed to adopt a resolution confirming the  
2 diagram and assessment for Zone 145 of L&LMD No. 89-1-C either as originally  
3 proposed or as changed by it; and

4 (g) the assessments to be levied on the assessable lots and parcels of land within  
5 Zone 145 of L&LMD No. 89-1-C for the maintenance and servicing of, and the  
6 provision of electricity for, traffic signal improvements in said Zone 145 during  
7 the fiscal year 2010-11 as contained in the report of the Director of  
8 Transportation which is on file with the Clerk of the Board of Supervisors  
9 (hereinafter the "Report") are based on benefits derived by such lots and parcels  
10 from the availability of such traffic signal improvements, and are not based upon  
11 the ownership of such lots and parcels.

12 **Section 2. Annexation.** Zone 145, as proposed to be annexed to L&LMD No.  
13 89-1-C, includes all the property subject to Parcel Map No. 34491 in the County of Riverside, State of  
14 California as described in Exhibit "A" attached hereto, shall be and is annexed into L&LMD No. 89-1-C.

15 **Section 3. Improvements.** The improvements authorized for Zone 145 of L&LMD  
16 No. 89-1-C are:

17 (a) Providing electricity to and the maintenance and servicing of traffic signals within  
18 the public right-of-way including incidental costs and expenses.

19 **Section 4. Confirmation of Report.** The Report and the assessment diagram and  
20 the assessment of estimated costs for the maintenance and servicing of, and the provision of  
21 electricity for, traffic signal improvements in Zone 145 of L&LMD No. 89-1-C for fiscal year 2010-11 as  
22 contained in the Report are confirmed.

23 **Section 5. Levy of Assessment.** Pursuant to Section 22631 of the Streets and  
24 Highways Code the adoption of this resolution constitutes the levy of the assessment for the  
25 installation and the maintenance and servicing of, and the provision of electricity for, traffic signal  
26 improvements in Zone 145 of L&LMD No. 89-1-C during fiscal year 2010-11, as contained in the

1 Report, and such assessment is levied. The Clerk of the Board of Supervisors is directed to file a  
2 certified copy of this resolution, together with the diagram and assessment contained in the Report  
3 with the County Auditor-Controller of the County of Riverside, who, pursuant to Section 22645 of the  
4 Streets and Highways Code, shall enter on the County Tax Roll opposite each lot or parcel of land the  
5 amount assessed thereupon, as shown in said assessment.

6 **Section 6. Effective Date.** This Resolution shall take effect from and after its date  
7 of adoption.

8  
9  
10  
11  
12  
13  
14  
15  
16  
17  
18  
19  
20  
21  
22  
23  
24  
25  
26

**EXHIBIT "A"**

**DESCRIPTION OF BOUNDARIES**

The boundaries of Zone 145 to be annexed into Landscaping and Lighting Maintenance District No. 89-1-Consolidated, of the County of Riverside are coterminous with the boundaries of APN 305-170-037 and 305-180-049 as shown on Assessment Roll in the County of Riverside, State of California in Fiscal Year 2010-11.

1  
2  
3  
4  
5  
6  
7  
8  
9  
10  
11  
12  
13  
14  
15  
16  
17  
18  
19  
20  
21  
22  
23  
24

# ZONE 145

PORTION OF SECTION 19, T.4S., R.3W.

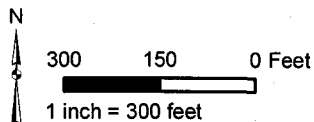
PARCEL MAP NO. 34491

15 PARCELS

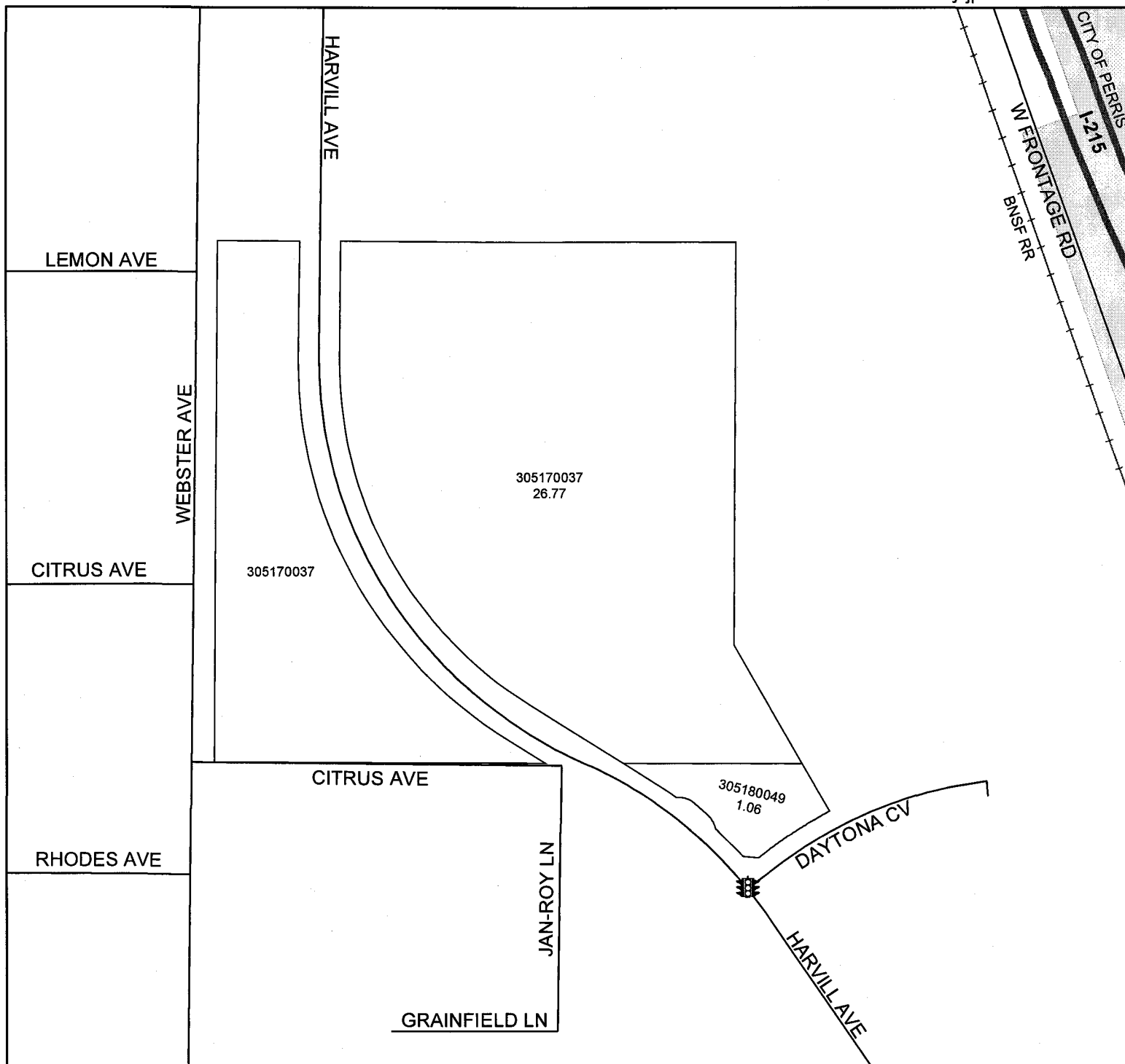


The County of Riverside assumes no warranty or legal responsibility for the information contained on this map. Data and information represented on this map is subject to updates, modifications and may not be complete or appropriate for all purposes. County GIS and other sources should be queried for the most current information. Do not copy or resell this map.

Printed by jpickeri on 3/4/10



## ASSESSMENT DIAGRAM



DENOTES MAINTAINED TRAFFIC SIGNAL