

**SUBMITTAL TO THE BOARD OF SUPERVISORS
COUNTY OF RIVERSIDE, STATE OF CALIFORNIA**

631A



FROM: County Counsel

SUBMITTAL DATE:
August 3, 2011

SUBJECT: Ordinance No. 348.4719

RECOMMENDED MOTION: That the Board of Supervisors adopt Ordinance No. 348.4719 amending the zoning in the Rancho California area shown on Map No. 2.2333 Change of Zone Case No. 7542.

BACKGROUND: Change of Zone Case No. 7542 was tentatively approved by the Board of Supervisors on July 12, 2011.

MICHELLE CLACK, Deputy County Counsel
PAMELA J WALLS, County Counsel

Departmental Concurrence

FINANCIAL DATA	Current F.Y. Total Cost:	\$ 0	In Current Year Budget:	N/A
	Current F.Y. Net County Cost:	\$ 0	Budget Adjustment:	N/A
	Annual Net County Cost:	\$ 0	For Fiscal Year:	N/A

SOURCE OF FUNDS:	Positions To Be Deleted Per A-30	<input type="checkbox"/>
	Requires 4/5 Vote	<input type="checkbox"/>

C.E.O. RECOMMENDATION:

APPROVE

BY:

Denise C. Harden

County Executive Office Signature

- Policy
- Policy
- Consent
- Consent

Dept's Recomm.:
Per Exec. Ofc.:

1 ORDINANCE NO. 348.4719

2 AN ORDINANCE OF THE COUNTY OF RIVERSIDE
3 AMENDING ORDINANCE NO. 348 RELATING TO ZONING
4

5 The Board of Supervisors of the County of Riverside ordains as follows:

6 Section 1. Section 4.1 of Ordinance No. 348, and official Zoning Plan Map No. 2, as
7 amended, are further amended by placing in effect in the Rancho California Area, the zone or zones as
8 shown on the map entitled "Change of Official Zoning Plan Amending Ordinance No. 348, Map No.
9 2.2333, Change of Zone Case No. 7542" which map is made a part of this ordinance.

10 Section 2. This ordinance shall take effect 30 days after its adoption.

11 BOARD OF SUPERVISORS OF THE COUNTY
12 OF RIVERSIDE, STATE OF CALIFORNIA

13
14 By: _____
Chairman, Board of Supervisors

15 ATTEST:

16 Clerk of the Board

17
18 By: _____
19 Deputy

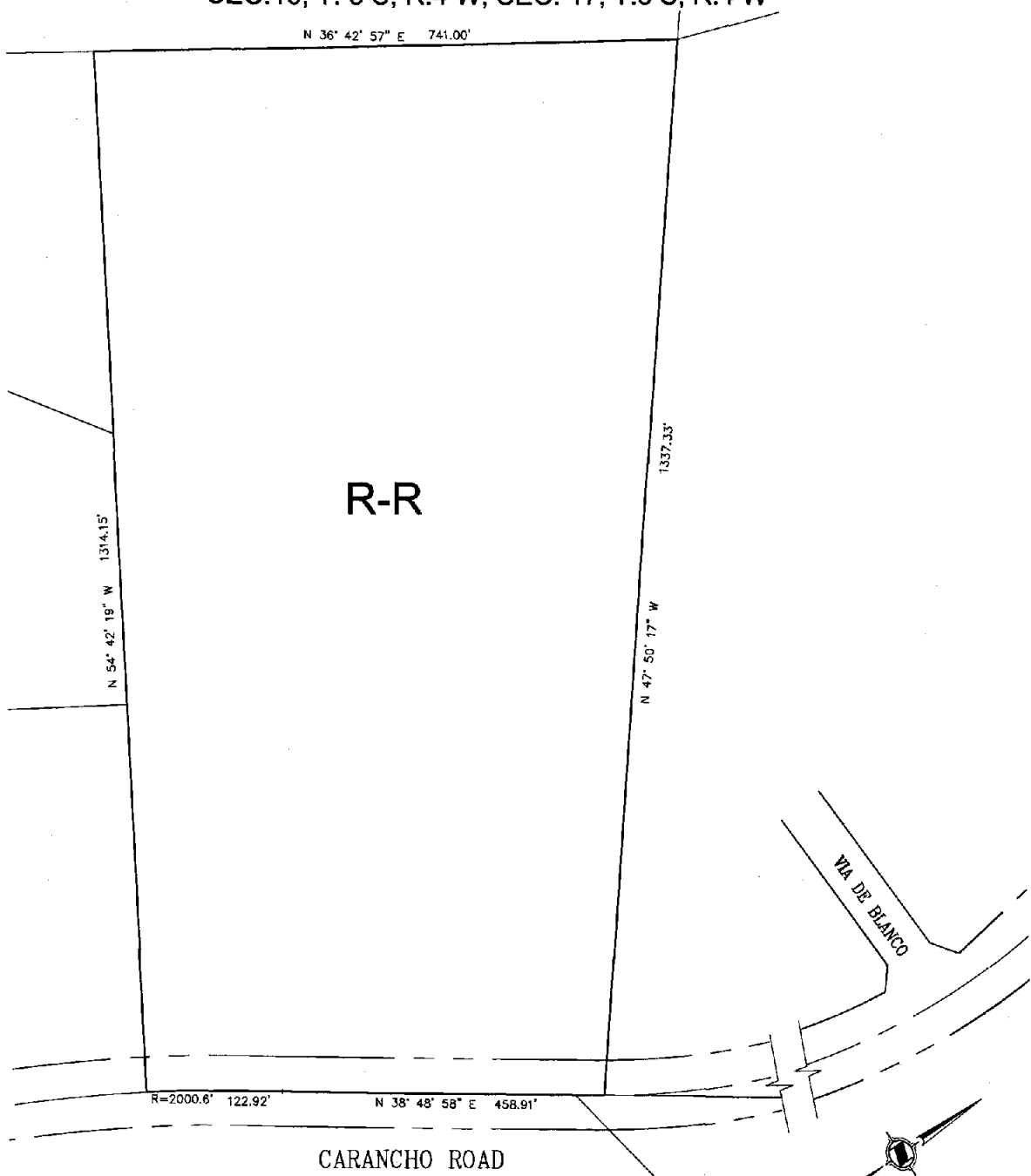
20 (SEAL)

21
22 APPROVED AS TO FORM
23 July 27, 2011

24
25 By: 
26 MICHELLE CLACK
27 Deputy County Counsel

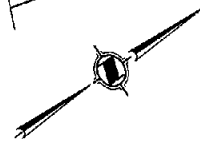
RANCHO CALIFORNIA AREA
SEC.16, T. 8 S, R.4 W, SEC. 17, T.8 S, R.4 W

N 36° 42' 57" E 741.00'



LEGEND

R-R RURAL RESIDENTIAL



GRAPHIC SCALE

MAP NO. 2.2333
CHANGE OF OFFICIAL ZONING PLAN
AMENDING
MAP NO. 2, ORDINANCE NO. 348
CHANGE OF ZONE CASE NO. 7542
ADOPTED BY ORDINANCE NO. 348.4719
AUGUST 16, 2011
RIVERSIDE COUNTY BOARD OF SUPERVISORS