

**SUBMITTAL TO THE BOARD OF SUPERVISORS  
COUNTY OF RIVERSIDE, STATE OF CALIFORNIA**

421B



**FROM:** County Counsel

**SUBMITTAL DATE:**  
December 20, 2011

**SUBJECT:** Ordinance No. 348.4733

**RECOMMENDED MOTION:** That the Board of Supervisors adopt Ordinance No. 348.4733 amending the zoning in the Rancho California Area shown on Map No. 2.2338 Change of Zone Case No. 7444.

**BACKGROUND:** Change of Zone Case No. 7444 was tentatively approved by the Board of Supervisors on November 8, 2011.

Departmental Concurrence

MICHELLE CLACK, Deputy County Counsel  
PAMELA J WALLS, County Counsel

<b>FINANCIAL DATA</b>	Current F.Y. Total Cost:	\$ 0	In Current Year Budget:	N/A
	Current F.Y. Net County Cost:	\$ 0	Budget Adjustment:	N/A
	Annual Net County Cost:	\$ 0	For Fiscal Year:	N/A

<b>SOURCE OF FUNDS:</b>	Positions To Be Deleted Per A-30	<input type="checkbox"/>
	Requires 4/5 Vote	<input type="checkbox"/>

**C.E.O. RECOMMENDATION:**

APPROVE

BY:

Tina Grande

**County Executive Office Signature**

- Policy
- Policy
- Consent
- Consent

Dep't Recomm.:  
Per Exec. Ofc.:

**Prev. Agn. Ref.:**

**District:** THIRD

**Agenda Number:**

3.58

1 ORDINANCE NO. 348.4733

2 AN ORDINANCE OF THE COUNTY OF RIVERSIDE  
3 AMENDING ORDINANCE NO. 348 RELATING TO ZONING  
4

5 The Board of Supervisors of the County of Riverside ordains as follows:

6 Section 1. Section 4.1 of Ordinance No. 348, and official Zoning Plan Map No. 2, as  
7 amended, are further amended by placing in effect in the Rancho California Area, the zone or zones as  
8 shown on the map entitled "Change of Official Zoning Plan Amending Ordinance No. 348, Map No.  
9 2.2338, Change of Zone Case No. 7444" which map is made a part of this ordinance.

10 Section 2. This ordinance shall take effect 30 days after its adoption.

11 BOARD OF SUPERVISORS OF THE COUNTY  
12 OF RIVERSIDE, STATE OF CALIFORNIA

13 By: \_\_\_\_\_  
14 Chairman, Board of Supervisors

15 ATTEST:  
16 Clerk of the Board

17  
18 By: \_\_\_\_\_  
19 Deputy

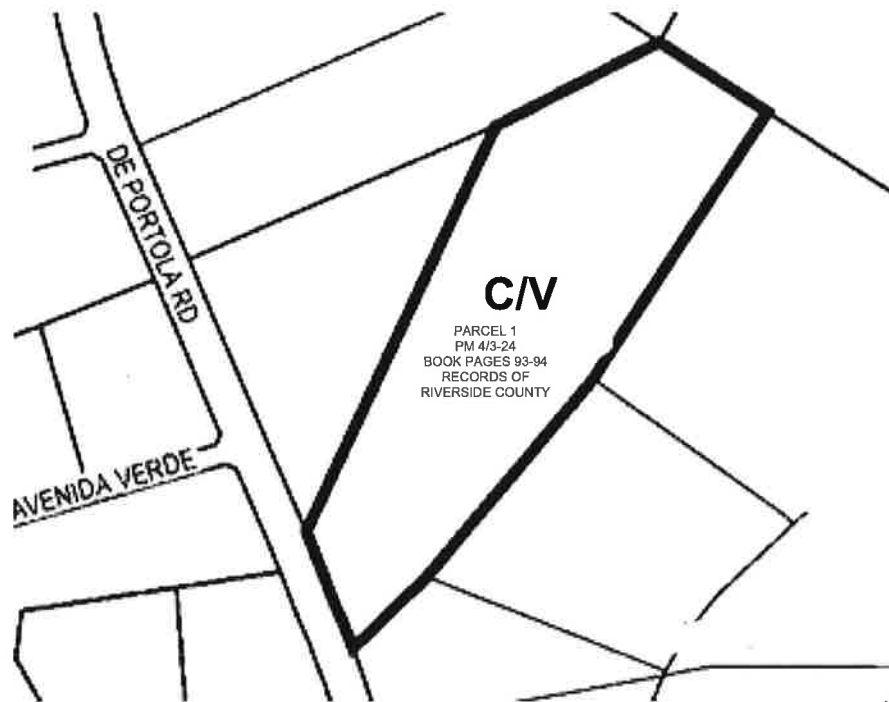
20 (SEAL)  
21

22 APPROVED AS TO FORM  
23 December 1, 2011

24  
25 By:  \_\_\_\_\_  
26 MICHELLE CLACK  
27 Deputy County Counsel

RANCHO CALIFORNIA AREA

SEC.31, T7. S.;R1. W. S.B.B. & M.



**C/V**

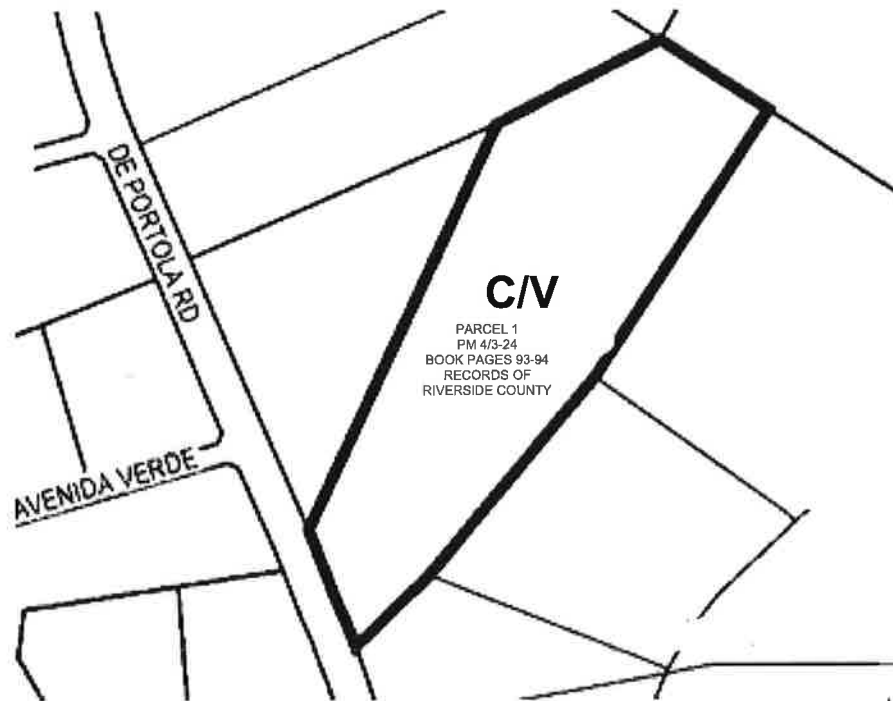
CITRUS VINEYARD



MAP NO. 2.2338  
CHANGE OF OFFICIAL ZONING PLAN  
AMENDING  
MAP NO. 2, ORDINANCE NO. 348  
CHANGE OF ZONE CASE NO. 7444  
ADOPTED BY ORDINANCE NO. 348.4733  
JANUARY 10, 2012

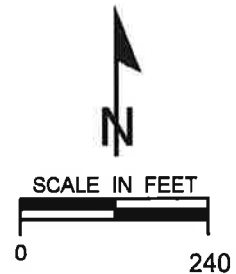
RANCHO CALIFORNIA AREA

SEC.31, T7. S.,R1. W. S.B.B. & M.



C/V

CITRUS VINEYARD



MAP NO. 2.2338  
CHANGE OF OFFICIAL ZONING PLAN  
AMENDING  
MAP NO. 2, ORDINANCE NO. 348  
CHANGE OF ZONE CASE NO. 7444  
ADOPTED BY ORDINANCE NO. 348.4733  
JANUARY 10, 2012