

**SUBMITTAL TO THE BOARD OF SUPERVISORS  
COUNTY OF RIVERSIDE, STATE OF CALIFORNIA**

119  
A



**FROM:** County Counsel/Planning

**SUBMITTAL DATE:**  
March 1, 2012

**SUBJECT:** Ordinance No. 348.4739  
District One/District One

**RECOMMENDED MOTION:** That the Board of Supervisors adopt Ordinance No. 348.4739 amending the zoning in the Alberhill, Glen Ivy and Temescal Area shown on Map No. 2.2340 Change of Zone Case No. 7317.

**BACKGROUND:** Change of Zone Case No. 7317 was tentatively approved by the Board of Supervisors on March 20, 2012.

Departmental Concurrence

MICHELLE CLACK, Deputy County Counsel  
PAMELA J WALLS, County Counsel

<b>FINANCIAL DATA</b>	Current F.Y. Total Cost:	\$ 0	In Current Year Budget:	N/A
	Current F.Y. Net County Cost:	\$ 0	Budget Adjustment:	N/A
	Annual Net County Cost:	\$ 0	For Fiscal Year:	N/A

<b>SOURCE OF FUNDS:</b>	Positions To Be Deleted Per A-30	<input type="checkbox"/>
	Requires 4/5 Vote	<input type="checkbox"/>

**C.E.O. RECOMMENDATION:** APPROVE  
BY:   
Tina Grande

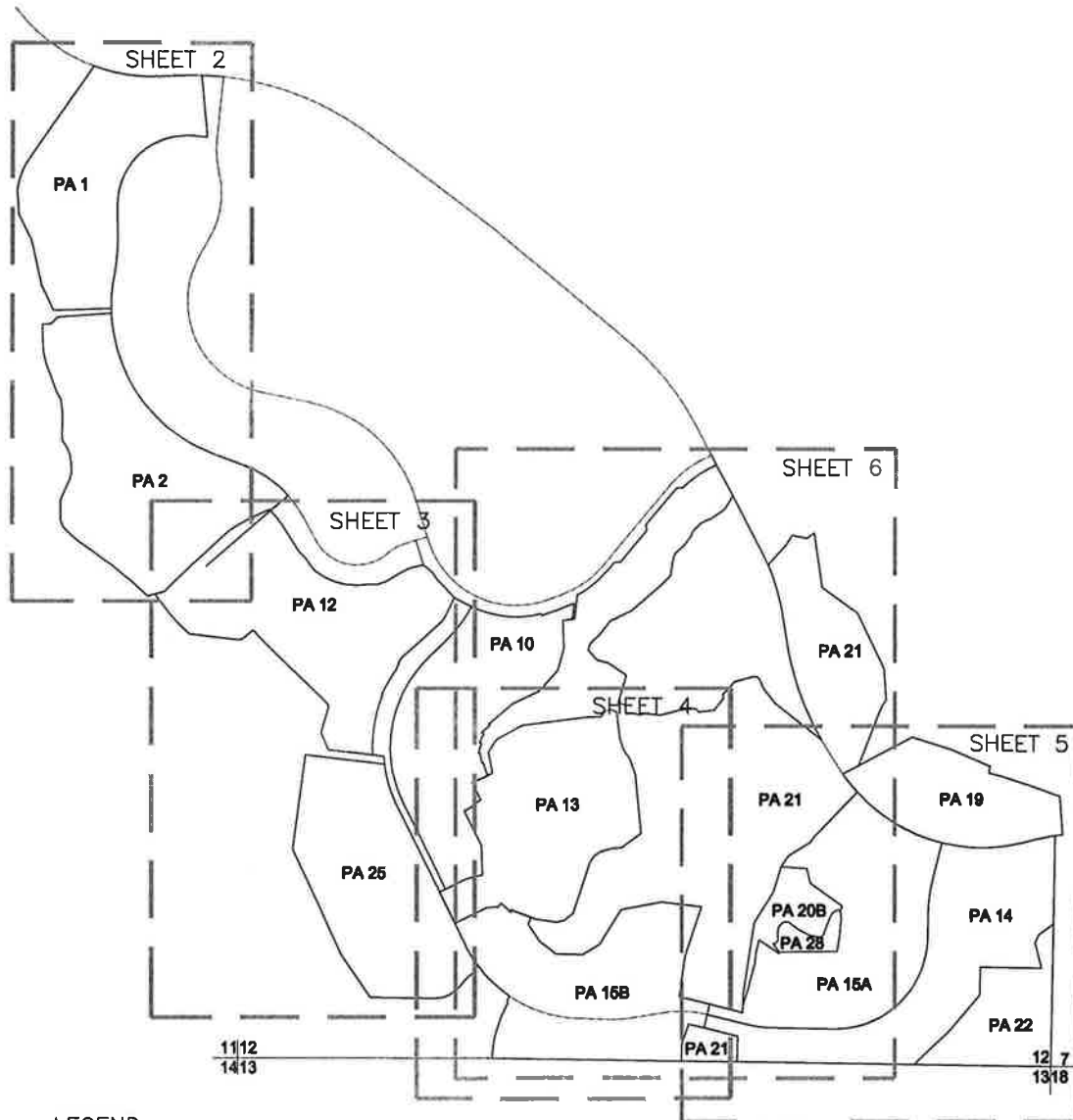
**County Executive Office Signature**

- Consent
- Policy
- Consent
- Policy

Dep't Recomm.:  
Per Exec. Ofc.:



ALBERHILL/GLEN IVY/TEMESCAL  
SECS 11 & 12, T.5S., R.6W S.B.M.



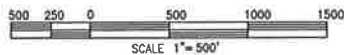
LEGEND

SP ZONE SPECIFIC PLAN (SP 256 #1)

MAP NO. 2.2340

CHANGE OF OFFICIAL ZONING PLAN  
AMENDING  
MAP NO. 2 ORDINANCE NO. 348

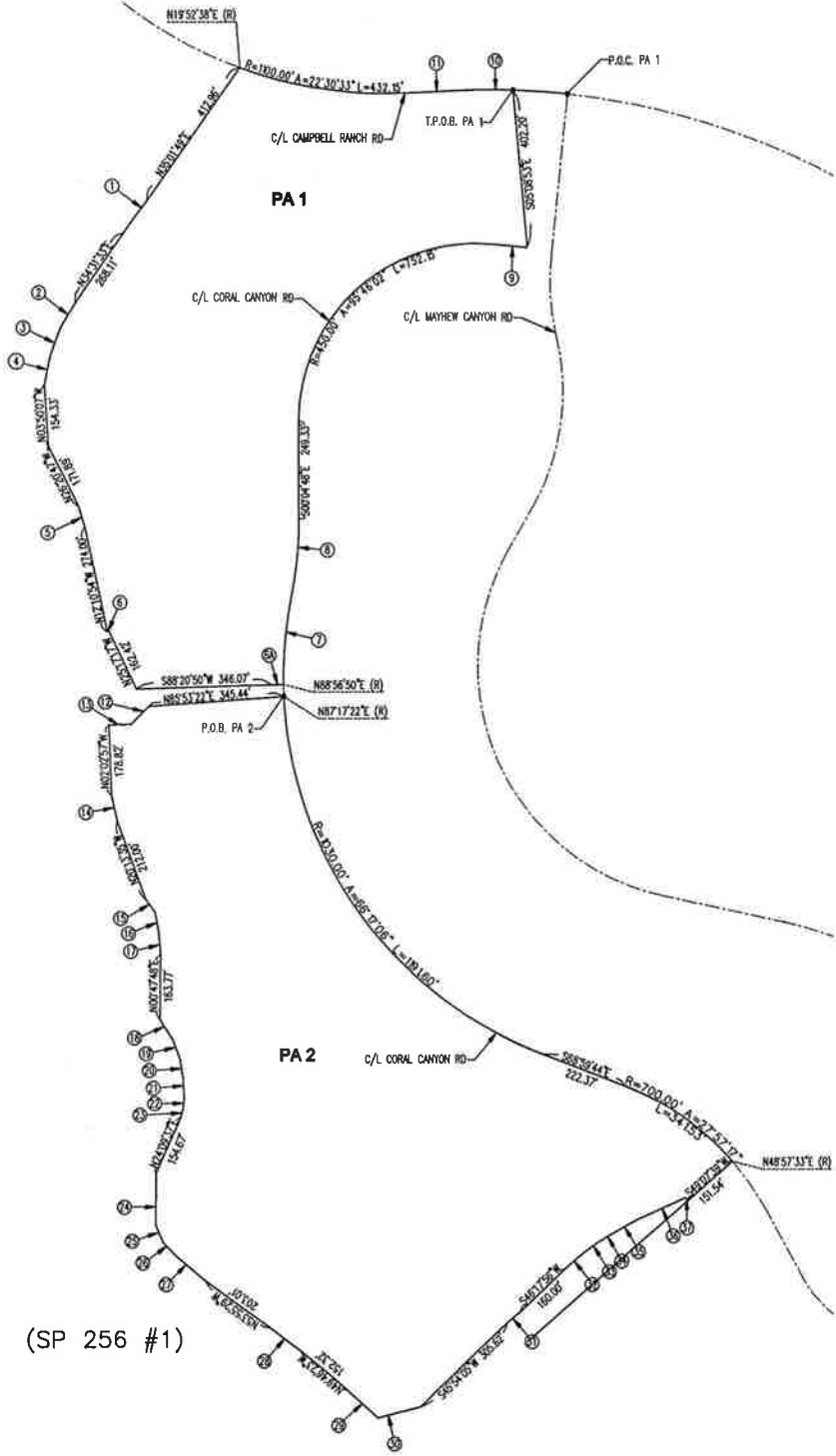
CHANGE OF ZONE CASE NO. 7317  
ADOPTED BY ORDINANCE NO. 348.4739  
MARCH 20, 2012  
RIVERSIDE COUNTY BOARD OF SUPERVISORS



ALBERHILL/GLEN IVY/TEMESCAL  
SEC 11, T.5S., R.6W S.B.M.

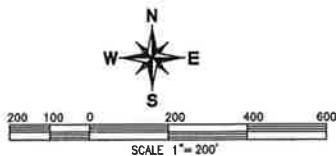
DATA TABLE

NO.	BRNG/DELTA	RADIUS	LENGTH
1	N37°40'03"E	-	51.05'
2	N30°39'40"E	-	72.67'
3	N20°26'06"E	-	74.48'
4	N11°21'00"E	-	75.25'
5	N16°12'15"W	-	56.08'
6	S77°49'06"W	-	3.93'
6A	S88°56'50"W	-	30.00'
7	06°47'10"	1030.00	221.59'
8	11°21'14"	1030.00	204.11'
9	N84°18'46"W	-	86.10'
10	04°31'14"	1900.00	149.91'
11	N87°22'05"E	-	120.32'
12	N44°48'29"E	-	63.23'
13	N87°57'03"E	-	57.40'
14	N12°04'07"W	-	67.50'
15	N34°59'06"W	-	41.18'
16	N09°45'31"W	-	54.00'
17	N04°30'39"W	-	55.23'
18	N32°14'06"W	-	60.15'
19	N20°51'06"W	-	51.97'
20	N09°45'31"W	-	51.00'
21	N03°49'32"W	-	48.51'
22	N06°13'43"E	-	27.28'
23	N14°10'30"E	-	26.98'
24	N00°12'20"E	-	132.19'
25	N22°48'17"W	-	46.56'
26	N42°31'57"W	-	49.83'
27	N50°00'45"W	-	98.86'
28	N52°48'54"W	-	101.01'
29	N42°21'43"W	-	105.15'
30	S75°27'31"W	-	112.59'
31	S50°19'31"W	-	46.97'
32	S49°15'58"W	-	58.77'
33	S54°23'51"W	-	44.19'
34	S58°43'40"W	-	42.71'
35	S60°55'17"W	-	78.51'
36	S65°23'33"W	-	131.24'
37	N47°22'50"W	-	10.30'



LEGEND

SP ZONE SPECIFIC PLAN (SP 256 #1)



- APN'S: 290-530-001 THROUGH 032  
 290-531-001 THROUGH 010  
 290-532-001 THROUGH 021  
 290-540-001 THROUGH 015  
 290-541-001 THROUGH 023  
 290-550-001 THROUGH 018  
 290-551-001 THROUGH 022  
 290-560-001 THROUGH 013  
 290-561-001 THROUGH 011  
 290-562-001 THROUGH 032  
 290-620-001 THROUGH 021  
 290-621-001 THROUGH 028

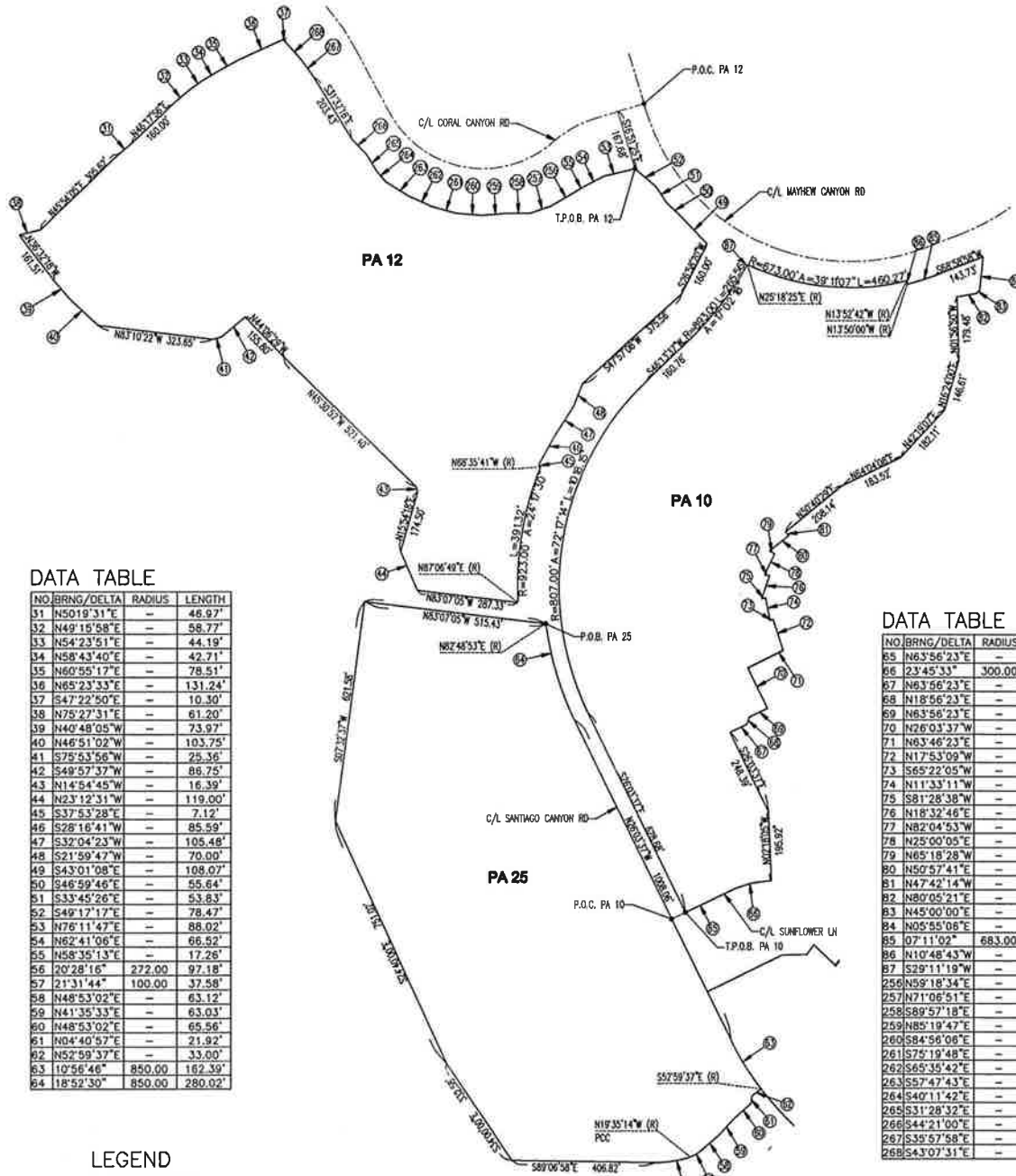
MAP NO. 2.2340

CHANGE OF OFFICIAL ZONING PLAN  
 AMENDING  
 MAP NO. 2 ORDINANCE NO. 348

CHANGE OF ZONE CASE NO. 7317  
 ADOPTED BY ORDINANCE NO. 348.4739  
 MARCH 20, 2012  
 RIVERSIDE COUNTY BOARD OF SUPERVISORS



ALBERHILL/GLEN IVY/TEMESCAL  
SECS 11 & 12, T.5S., R.6W S.B.M.



DATA TABLE

NO	BRNG/DELTA	RADIUS	LENGTH
31	N5019°31'E	-	46.97'
32	N49°15'58"E	-	58.77'
33	N54°23'51"E	-	44.19'
34	N58°43'40"E	-	42.71'
35	N60°55'17"E	-	78.51'
36	N65°23'33"E	-	131.24'
37	S47°22'50"E	-	10.30'
38	N75°27'31"E	-	61.20'
39	N40°48'05"W	-	73.97'
40	N46°51'02"W	-	103.75'
41	S75°53'56"W	-	25.36'
42	S49°57'37"W	-	86.75'
43	N14°54'45"W	-	16.39'
44	N23°12'31"W	-	119.00'
45	S37°53'28"E	-	7.12'
46	S28°16'41"W	-	85.59'
47	S32°04'23"W	-	105.48'
48	S21°59'47"W	-	70.00'
49	S43°01'08"E	-	108.07'
50	S46°59'46"E	-	55.64'
51	S33°45'26"E	-	53.83'
52	S49°17'17"E	-	78.47'
53	N76°11'47"E	-	88.02'
54	N62°41'06"E	-	66.52'
55	N58°35'13"E	-	17.26'
56	20°28'16"	272.00	97.18'
57	21°31'44"	100.00	37.58'
58	N48°53'02"E	-	63.12'
59	N41°35'33"E	-	63.03'
60	N48°53'02"E	-	65.56'
61	N04°40'57"E	-	21.82'
62	N52°59'37"E	-	33.00'
63	10°56'46"	850.00	182.39'
64	18°52'30"	850.00	280.02'

DATA TABLE

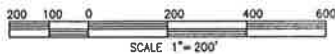
NO	BRNG/DELTA	RADIUS	LENGTH
65	N63°56'23"E	-	135.20'
66	23°45'33"	300.00	124.40'
67	N83°56'23"E	-	54.00'
68	N18°56'23"E	-	21.21'
69	N63°56'23"E	-	56.00'
70	N26°03'37"W	-	126.00'
71	N63°46'23"E	-	110.00'
72	N17°53'09"W	-	91.92'
73	S65°22'05"W	-	8.72'
74	N11°33'11"W	-	64.66'
75	S81°28'38"W	-	10.31'
76	N18°32'46"E	-	68.34'
77	N82°04'53"W	-	14.10'
78	N25°00'05"E	-	66.12'
79	N65°18'28"W	-	16.92'
80	N50°57'41"E	-	72.17'
81	N47°42'14"W	-	13.29'
82	N80°05'21"E	-	56.61'
83	N45°00'00"E	-	12.22'
84	N05°55'08"E	-	94.31'
85	07°11'02"	683.00	85.64'
86	N10°48'43"W	-	10.02'
87	S29°11'19"W	-	7.24'
256	N59°18'34"E	-	89.55'
257	N71°06'51"E	-	61.98'
258	S89°57'18"E	-	62.38'
259	N85°19'47"E	-	73.75'
260	S84°56'06"E	-	72.84'
261	S75°19'48"E	-	71.84'
262	S65°35'42"E	-	74.79'
263	S57°47'43"E	-	74.84'
264	S40°11'42"E	-	38.32'
265	S31°28'32"E	-	54.24'
266	S44°21'00"E	-	61.68'
267	S35°57'58"E	-	60.87'
268	S43°07'31"E	-	64.00'

LEGEND

SP\_ZONE SPECIFIC PLAN (SP 256 #1)



MAP NO. 2.2340



CHANGE OF OFFICIAL ZONING PLAN  
AMENDING  
MAP NO. 2 ORDINANCE NO. 348

APN'S: 290-590-001 THROUGH 025  
290-591-001 THROUGH 054  
290-600-001 THROUGH 019  
290-601-001 THROUGH 009  
290-602-001 THROUGH 020 & 022-049  
290-630-001 THROUGH 052  
290-640-001 THROUGH 040 & 042  
290-670-005

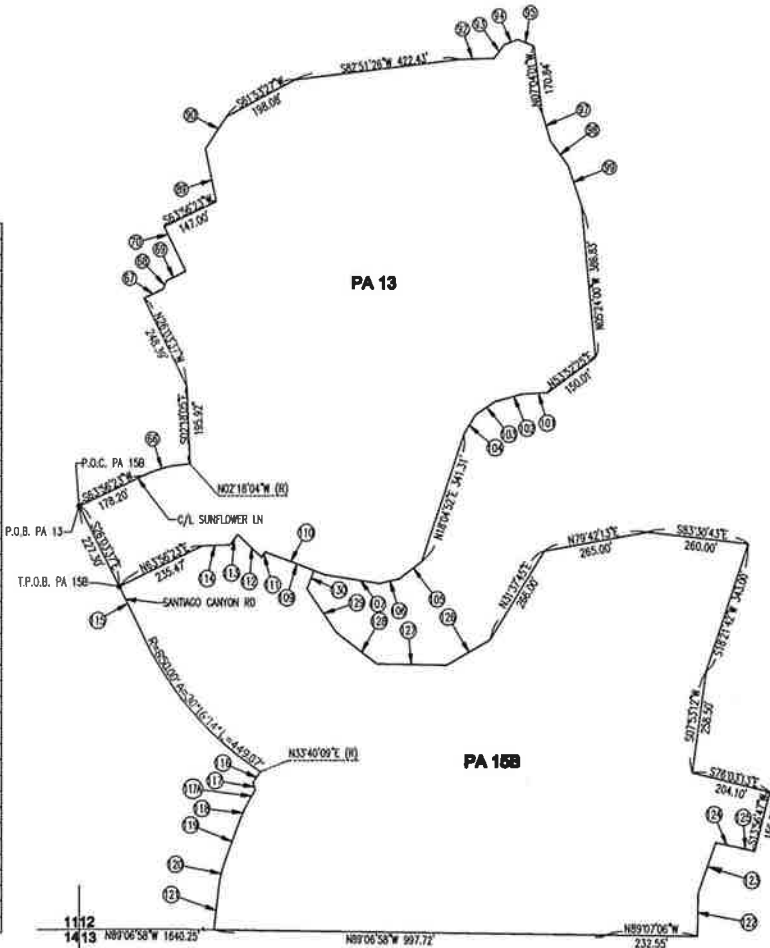
CHANGE OF ZONE CASE NO. 7317  
ADOPTED BY ORDINANCE NO. 348.4739  
MARCH 20, 2012  
RIVERSIDE COUNTY BOARD OF SUPERVISORS



ALBERHILL/GLEN IVY/TEMESCAL  
 SEC 12, T.5S., R.6W S.B.M.

DATA TABLE

NO.	BRNG./DELTA	RADIUS	LENGTH
66	23°45'33"	300.00	124.40'
67	S63°56'23"W	-	54.00'
68	S18°56'23"W	-	21.21'
69	S63°56'23"W	-	56.00'
70	S26°03'37"E	-	126.00'
89	S11°33'11"E	-	136.36'
90	S32°42'27"W	-	99.24'
92	S88°20'22"W	-	86.53'
93	S36°24'24"W	-	43.25'
94	S69°51'05"W	-	38.49'
95	N68°40'29"W	-	43.62'
97	N16°21'52"W	-	76.06'
98	N35°03'58"W	-	75.98'
99	N19°08'09"W	-	109.03'
101	N85°53'29"E	-	67.11'
102	N74°24'09"E	-	69.26'
103	N58°08'54"E	-	58.89'
104	N31°18'48"E	-	58.72'
105	N52°31'22"E	-	70.77'
106	N76°44'27"E	-	53.81'
107	S80°53'25"E	-	139.84'
109	S69°03'33"E	-	161.00'
110	S69°03'33"E	-	130.92'
111	N43°14'05"E	-	17.06'
112	S46°45'55"E	-	83.79'
113	N35°20'00"E	-	32.81'
114	N88°38'00"E	-	70.49'
115	N26°03'37"W	-	152.08'
116	N33°40'09"E	-	33.00'
117	N14°46'36"W	-	20.02'
117A	N30°55'17"E	-	26.03'
118	10°26'05"	328.00	59.74'
119	N20°29'12"E	-	98.61'
120	S3°52'37"	340.00	82.35'
121	N06°36'35"E	-	106.79'
122	S00°52'54"W	-	109.76'
123	S19°32'37"W	-	136.05'
124	N78°53'07"W	-	58.82'
125	N76°03'13"W	-	43.45'
126	N59°25'57"E	-	125.00'
127	S88°52'00"E	-	179.00'
128	S52°12'38"E	-	130.00'
129	S34°11'16"E	-	133.48'
130	S20°56'27"W	-	50.00'

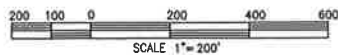


LEGEND

SP ZONE SPECIFIC PLAN (SP 256 #1)

MAP NO. 2.2340

CHANGE OF OFFICIAL ZONING PLAN  
 AMENDING  
 MAP NO. 2 ORDINANCE NO. 348



APN'S: 290-640-043 THROUGH 067  
 290-650-001 THROUGH 049  
 290-660-006

CHANGE OF ZONE CASE NO. 7317  
 ADOPTED BY ORDINANCE NO. 348.4739  
 MARCH 20, 2012

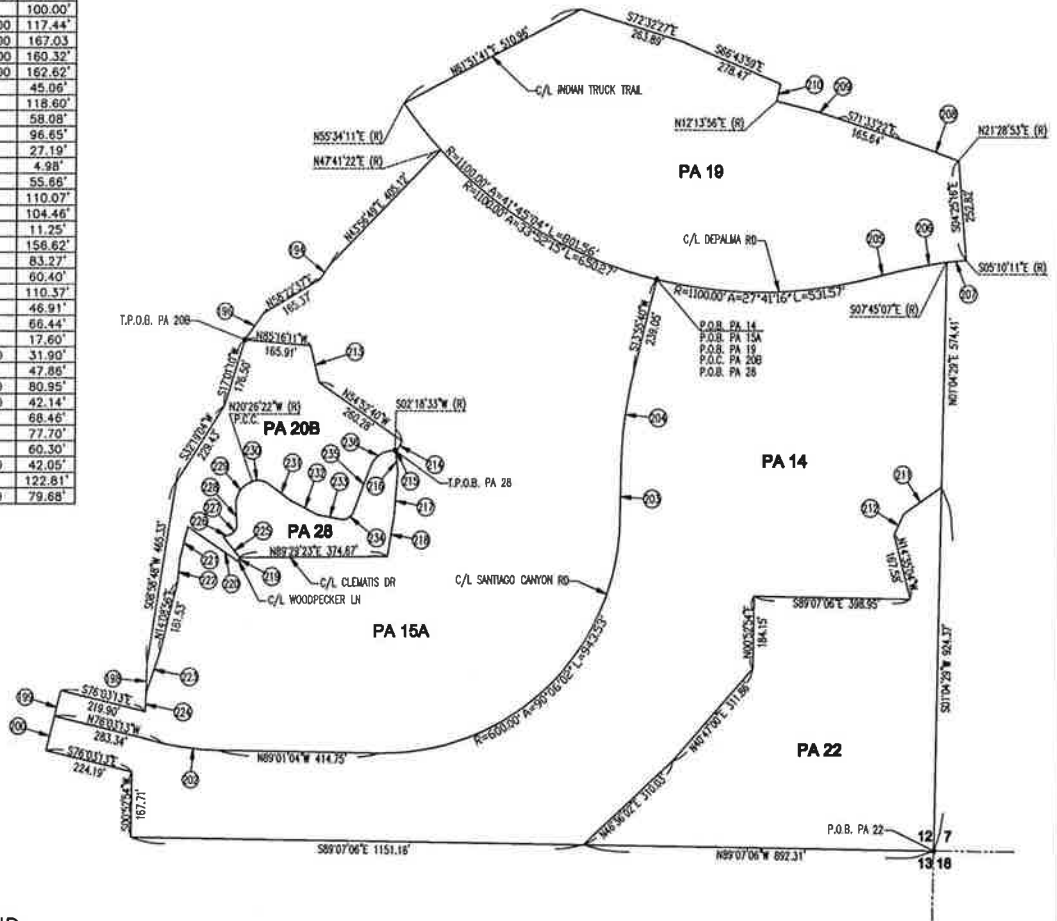
RIVERSIDE COUNTY BOARD OF SUPERVISORS



ALBERHILL/GLEN IVY/TEMESCAL  
SEC 12, T.5S., R.6W S.B.M.

DATA TABLE

NO	BRNG/Delta	RADIUS	LENGTH
194	N34°32'04"E	-	45.25'
196	N34°44'57"E	-	83.00'
198	S01°48'10"W	-	75.09'
199	N13°56'47"E	-	67.12'
200	S13°56'47"W	-	89.33'
202	S12°57'51"	600.00	135.76'
203	S00°52'54"W	-	135.00'
204	N13°02'46"	1100.00	250.47'
205	S76°07'51"W	-	100.00'
206	S05°07'02"	1100.00	117.44'
207	S08°42'00"	1100.00	167.03'
208	S3°02'16"	3024.00	160.32'
209	S06°12'42"	1500.00	162.82'
210	S12°13'56"W	-	45.06'
211	N54°50'08"E	-	118.60'
212	N24°29'50"E	-	58.08'
213	N12°44'18"W	-	96.65'
214	N28°14'55"E	-	27.19'
215	S87°41'27"E	-	4.98'
216	N06°32'00"W	-	55.66'
217	N04°23'30"E	-	110.07'
218	N09°38'51"E	-	104.46'
219	N13°23'25"E	-	11.25'
220	N55°45'00"W	-	156.62'
221	N13°23'25"E	-	83.27'
222	N05°30'30"E	-	60.40'
223	N18°33'41"E	-	110.57'
224	S01°48'10"W	-	46.91'
225	N38°33'36"W	-	66.44'
226	N73°14'00"E	-	17.60'
227	S76°08'40"	24.00	31.90'
228	N02°54'40"W	-	47.86'
229	S72°28'15"	64.00	80.95'
230	S7°29'22"	42.00	42.14'
231	S52°57'00"E	-	66.46'
232	S62°04'38"E	-	77.70'
233	S78°42'51"E	-	60.30'
234	S01°48'46"	30.00	42.05'
235	N20°58'23"E	-	122.81'
236	S71°20'10"	64.00	79.68'

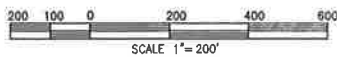


LEGEND

SP ZONE SPECIFIC PLAN (SP 256 #1)

MAP NO. 2.2340

CHANGE OF OFFICIAL ZONING PLAN  
AMENDING  
MAP NO. 2 ORDINANCE NO. 348



APN'S: 290-660-007, 290-660-014  
290-660-015  
290-670-022 THROUGH 031

CHANGE OF ZONE CASE NO. 7317  
ADOPTED BY ORDINANCE NO. 348.4739  
MARCH 20, 2012  
RIVERSIDE COUNTY BOARD OF SUPERVISORS



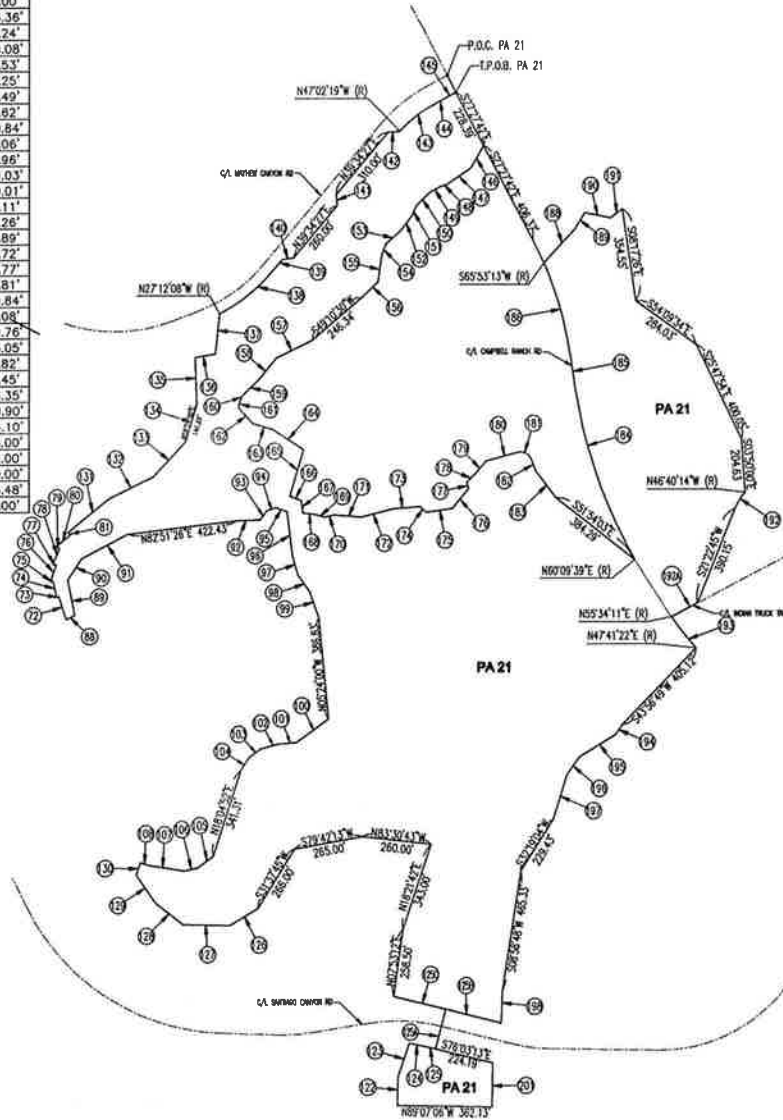
DATA TABLE

NO.	BRNG/DELTA	RADIUS	LENGTH
72	N17°53'09"W	-	91.92'
73	S85°22'05"W	-	8.72'
74	N11°33'11"W	-	84.86'
75	S81°28'38"W	-	10.31'
76	N18°32'48"E	-	68.34'
77	N82°04'53"W	-	14.10'
78	N25°00'05"E	-	86.12'
79	N85°18'28"W	-	16.92'
80	N50°57'41"E	-	72.17'
81	N47°42'14"W	-	13.29'
88	S63°56'23"W	-	37.00'
89	S11°33'11"E	-	136.36'
90	S32°42'27"W	-	99.24'
91	S81°53'27"W	-	198.08'
92	S88°20'22"W	-	86.53'
93	S36°24'24"W	-	43.25'
94	S69°51'05"W	-	36.49'
95	N68°40'25"W	-	43.82'
96	N07°04'01"W	-	170.84'
97	N16°21'52"W	-	76.06'
98	N35°03'58"W	-	76.96'
99	N19°08'09"W	-	109.03'
100	N53°52'25"E	-	150.01'
101	N85°53'29"E	-	67.11'
102	N74°24'09"E	-	89.26'
103	N56°08'54"E	-	58.89'
104	N31°18'48"E	-	58.72'
105	N52°31'22"E	-	70.77'
106	N76°44'27"E	-	53.81'
107	S80°53'25"E	-	139.84'
108	S69°03'33"E	-	30.08'
122	N00°52'54"E	-	109.76'
123	N19°32'37"E	-	136.05'
124	S78°53'07"E	-	58.82'
125	S76°03'13"E	-	43.45'
125A	S13°56'47"W	-	156.35'
125B	N76°03'13"W	-	219.90'
125C	N76°03'13"W	-	204.10'
126	S59°25'57"W	-	125.00'
127	N88°52'00"W	-	179.00'
128	N52°12'38"W	-	130.00'
129	N34°11'16"W	-	133.48'
130	N20°56'27"E	-	50.00'

ALBERHILL/GLEN IVY/TEMESCAL  
SEC 12, T.5S., R.6W S.B.M.

DATA TABLE

NO.	BRNG/DELTA	RADIUS	LENGTH
131	N50°40'29"E	-	208.14'
132	N64°04'08"E	-	183.52'
133	N42°19'07"E	-	182.11'
134	N16°24'00"E	-	146.61'
135	N01°56'50"W	-	179.48'
136	N80°05'21"E	-	77.61'
137	N05°55'06"E	-	153.48'
138	23°13'27"	643.00	260.63'
139	N39°34'27"E	-	60.51'
140	N83°33'05"E	-	43.20'
141	N05°25'34"W	-	42.43'
142	N84°22'24"E	-	43.88'
143	19°28'36"	527.00	178.84'
144	N62°24'17"E	-	36.06'
145	N62°32'18"E	-	48.00'
146	S29°45'21"W	-	100.38'
147	S55°39'30"W	-	105.09'
148	S71°05'43"W	-	26.85'
149	S62°30'46"W	-	51.83'
150	S45°07'21"W	-	70.05'
151	S23°20'11"W	-	43.76'
152	S36°06'54"W	-	69.70'
153	S48°22'25"W	-	78.43'
154	S19°44'53"W	-	46.08'
155	S07°47'20"W	-	102.98'
156	S45°37'52"W	-	86.43'
157	S64°09'15"W	-	151.26'
158	S39°00'20"W	-	113.39'
159	S47°23'10"W	-	78.33'
160	S28°05'44"W	-	19.46'
161	S17°53'28"W	-	31.49'
162	S42°05'55"E	-	83.81'
163	S74°56'00"E	-	77.15'
164	S55°59'08"E	-	142.72'
165	S16°25'34"W	-	184.28'
166	S68°40'25"E	-	47.13'
167	S07°04'01"E	-	48.13'
168	S83°50'45"E	-	51.04'
169	S73°34'50"E	-	35.41'
170	N76°31'20"E	-	35.73'
171	S85°11'55"E	-	104.51'
172	N75°08'39"E	-	125.01'
173	N85°21'27"E	-	103.11'
174	S43°34'10"E	-	30.94'
175	N81°56'49"E	-	104.76'
176	N38°47'08"E	-	94.73'
177	N12°26'35"W	-	27.93'
178	N46°10'48"E	-	43.21'
179	N39°42'35"E	-	67.59'
180	N74°55'46"E	-	125.67'
181	94°50'05"	40.00	59.23'
182	S20°14'09"E	-	48.77'
183	S37°21'17"E	-	130.98'
184	21°13'32"	1900.00	703.87'
185	N08°36'49"W	-	126.14'
186	14°49'04"	1400.00	362.07'
187	18°50'53"	1400.00	460.55'
188	N42°23'25"E	-	175.71'
189	N30°53'56"E	-	73.70'
190	S78°58'03"E	-	101.59'
191	N52°01'20"E	-	54.86'
192	21°57'01"	190.00	72.79'
193	S61°51'41"W	-	112.70'
193A	07°52'49"	1100.00	151.29'
194	S34°32'04"W	-	45.25'
195	S58°22'37"W	-	165.37'
196	S34°44'57"W	-	83.00'
197	S17°01'10"W	-	176.50'
198	S01°48'10"W	-	122.00'
201	S00°52'54"W	-	167.71'

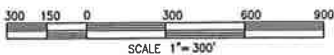


LEGEND

SP ZONE SPECIFIC PLAN (SP 256 #1)

MAP NO. 2.2340

CHANGE OF OFFICIAL ZONING PLAN  
AMENDING  
MAP NO. 2 ORDINANCE NO. 348



APN'S: 290-130-032, 290-660-001  
290-670-016, 290-670-032

CHANGE OF ZONE CASE NO. 7317  
ADOPTED BY ORDINANCE NO. 348.4739  
MARCH 20, 2012  
RIVERSIDE COUNTY BOARD OF SUPERVISORS

