

**SUBMITTAL TO THE BOARD OF SUPERVISORS  
COUNTY OF RIVERSIDE, STATE OF CALIFORNIA**

949A



**FROM:** County Counsel/Planning

**SUBMITTAL DATE:**  
September 11, 2012

**SUBJECT:** Ordinance No. 348.4748  
District Three/District Three

**RECOMMENDED MOTION:** That the Board of Supervisors adopt Ordinance No. 348.4748 amending the zoning in the Anza Area shown on Map No. 2.2346 Change of Zone Case No. 7382.

**BACKGROUND:** Change of Zone Case No. 7382 was tentatively approved by the Board of Supervisors on June 5, 2012.

Departmental Concurrence

MICHELLE CLACK, Deputy County Counsel  
PAMELA J WALLS, County Counsel

<b>FINANCIAL DATA</b>	Current F.Y. Total Cost:	\$ 0	In Current Year Budget:	N/A
	Current F.Y. Net County Cost:	\$ 0	Budget Adjustment:	N/A
	Annual Net County Cost:	\$ 0	For Fiscal Year:	N/A

<b>SOURCE OF FUNDS:</b>	Positions To Be Deleted Per A-30	<input type="checkbox"/>
	Requires 4/5 Vote	<input type="checkbox"/>

**C.E.O. RECOMMENDATION:** APPROVE

BY:   
Tina Grande

**County Executive Office Signature**

- Consent
- Policy
- Consent
- Policy

Dep't Recomm.:  
Per Exec. Ofc.:

1 ORDINANCE NO. 348.4748

2 AN ORDINANCE OF THE COUNTY OF RIVERSIDE  
3 AMENDING ORDINANCE NO. 348 RELATING TO ZONING  
4

5 The Board of Supervisors of the County of Riverside ordains as follows:

6 Section 1. Section 4.1 of Ordinance No. 348, and official Zoning Plan Map No. 2, as  
7 amended, are further amended by placing in effect in the Rancho California Area, the zone or zones as  
8 shown on the map entitled "Change of Official Zoning Plan Amending Ordinance No. 348, Map No.  
9 2.2346, Change of Zone Case No. 7382" which map is made a part of this ordinance.

10 Section 2. This ordinance shall take effect 30 days after its adoption.

11 BOARD OF SUPERVISORS OF THE COUNTY  
12 OF RIVERSIDE, STATE OF CALIFORNIA

13 By: \_\_\_\_\_  
14 Chairman, Board of Supervisors

15 ATTEST:

16 Clerk of the Board

17  
18 By: \_\_\_\_\_  
19 Deputy

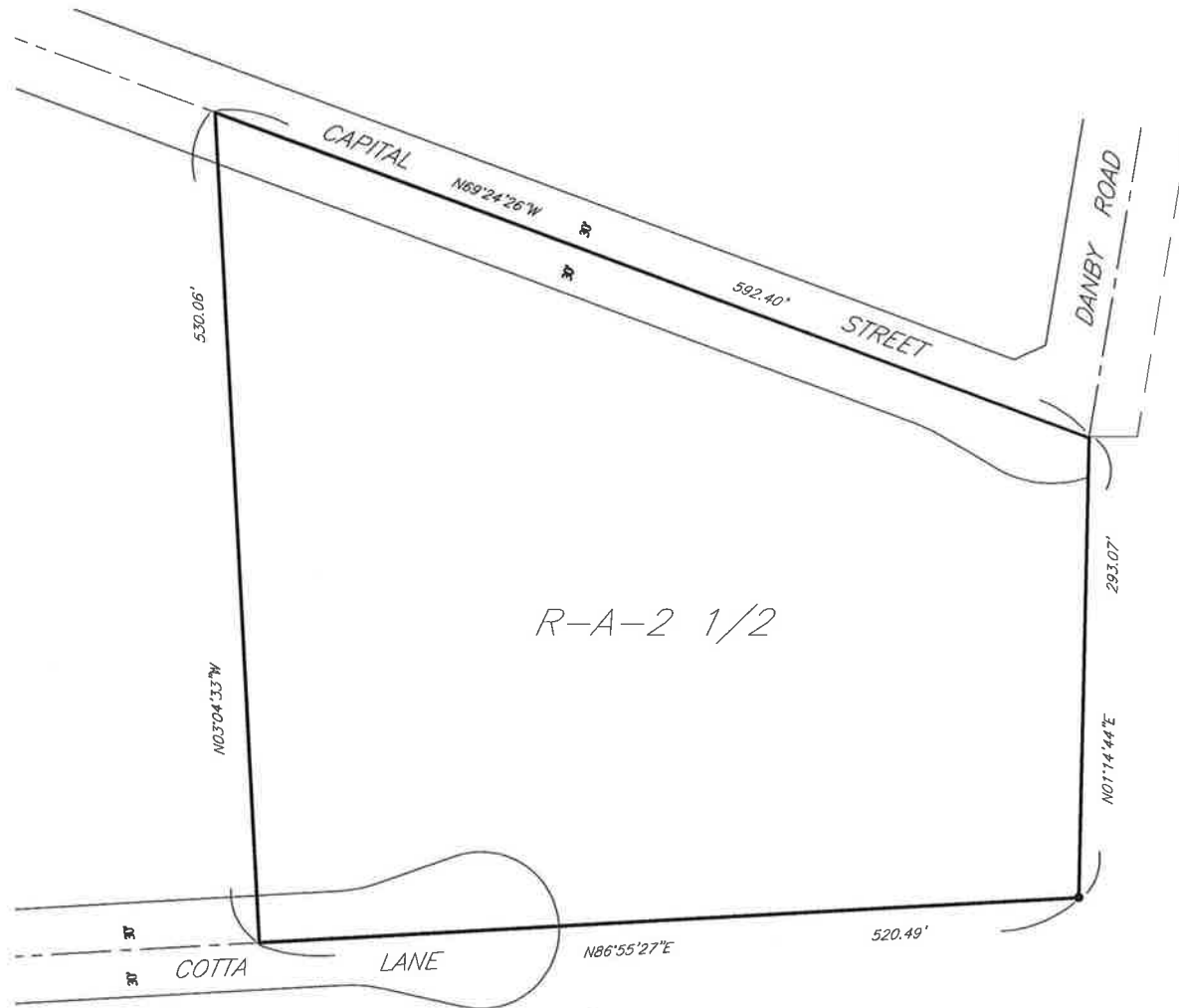
20 (SEAL)

21  
22 APPROVED AS TO FORM  
23 August 28, 2012

24  
25 By:  \_\_\_\_\_  
26 MICHELLE CLACK  
27 Deputy County Counsel

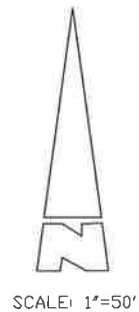
RANCHO CALIFORNIA AREA

SECTION 2, T.8S., R.2W., S.B.B. & M.



LEGEND

R-A-2 1/2 RESIDENTIAL AGRICULTURAL- 2 1/2 ACRE



MAP NO. 2,2346  
CHANGE OF OFFICIAL ZONING PLAN  
AMENDING  
MAP NO. 2, ORDINANCE NO. 348

CHANGE OF ZONE CASE NO. 7382  
ADOPTED BY ORDINANCE NO. 348.4748  
SEPTEMBER 11, 2012  
RIVERSIDE COUNTY BOARD OF SUPERVISORS