

**SUBMITTAL TO THE BOARD OF SUPERVISORS
COUNTY OF RIVERSIDE, STATE OF CALIFORNIA**

406 B



FROM: County Counsel/Planning

SUBMITTAL DATE:
July 22, 2013

SUBJECT: Ordinance No. 348.4759
District Three/District Three

RECOMMENDED MOTION: That the Board of Supervisors adopt Ordinance No. 348.4759 amending the zoning in the Rancho California Area shown on Map No. 2.2350 Change of Zone Case No. 7421.

BACKGROUND: Change of Zone Case No. 7421 was tentatively approved by the Board of Supervisors on July 16, 2013.

Departmental Concurrence


MICHELLE CLACK, Deputy County Counsel
PAMELA J WALLS, County Counsel

FINANCIAL DATA	Current F.Y. Total Cost:	\$ 0	In Current Year Budget:	N/A
	Current F.Y. Net County Cost:	\$ 0	Budget Adjustment:	N/A
	Annual Net County Cost:	\$ 0	For Fiscal Year:	N/A

SOURCE OF FUNDS:	Positions To Be Deleted Per A-30	<input type="checkbox"/>
	Requires 4/5 Vote	<input type="checkbox"/>

C.E.O. RECOMMENDATION: APPROVE
BY: 
Tina Grande
County Executive Office Signature

- Consent
- Policy
- Consent
- Policy

Dept't Recomm.:
Per Exec. Ofc.:

2013 JUL -8 PM 3:30
RECEIVED RIVERSIDE COUNTY

2-14

1 ORDINANCE NO. 348.4759

2 AN ORDINANCE OF THE COUNTY OF RIVERSIDE
3 AMENDING ORDINANCE NO. 348 RELATING TO ZONING
4

5 The Board of Supervisors of the County of Riverside ordains as follows:

6 Section 1. Section 4.1 of Ordinance No. 348, and official Zoning Plan Map No. 2, as
7 amended, are further amended by placing in effect in the Rancho California Area, the zone or zones as
8 shown on the map entitled "Change of Official Zoning Plan Amending Ordinance No. 348, Map No.
9 2.2350, Change of Zone Case No. 7421" which map is made a part of this ordinance.

10 Section 2. This ordinance shall take effect 30 days after its adoption.

11 BOARD OF SUPERVISORS OF THE COUNTY
12 OF RIVERSIDE, STATE OF CALIFORNIA

13 By: _____
14 Chairman, Board of Supervisors

15 ATTEST:

16 Clerk of the Board

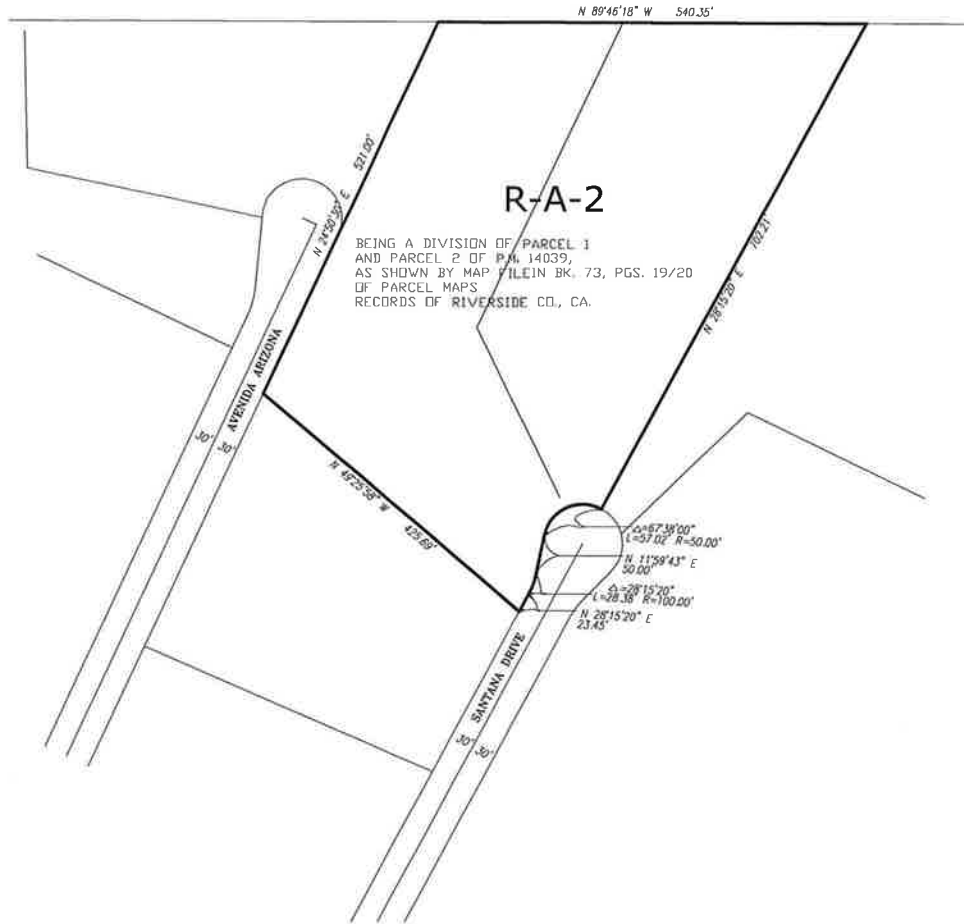
17
18 By: _____
19 Deputy

20 (SEAL)

21
22 APPROVED AS TO FORM
23 August 7, 2013

24
25 By:  _____
26 MICHELLE CLACK
27 Deputy County Counsel

RANCHO CALIFORNIA AREA
 SEC. 22, T.2 S., R.2 E.



LEGEND

R-A-2 RESIDENTIAL AGRICULTURAL, 2 AC. MIN.

MAP NO. 2.2350

CHANGE OF OFFICIAL ZONING PLAN

AMENDING

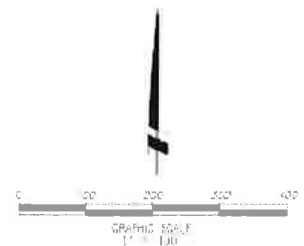
MAP NO 2 ORDINANCE NO 348

CHANGE OF ZONE CASE NO. 7421

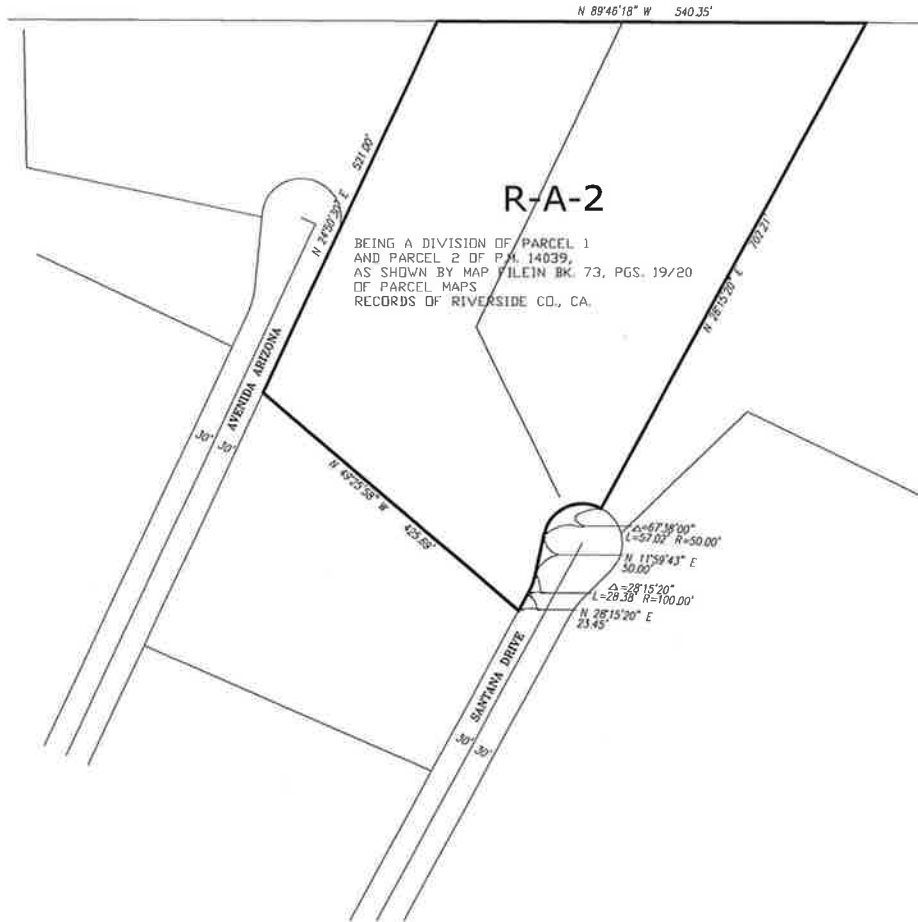
ADOPTED BY ORDINANCE NO. 348.4759

AUGUST 20, 2013

RIVERSIDE COUNTY BOARD OF SUPERVISORS



RANCHO CALIFORNIA AREA
 SEC. 22, T.2 S., R.2 E.



LEGEND

R-A-2 RESIDENTIAL AGRICULTURAL, 2 AC. MIN.

MAP NO. 2.2350

CHANGE OF OFFICIAL ZONING PLAN

AMENDING

MAP NO 2 ORDINANCE NO 348

CHANGE OF ZONE CASE NO. 7421

ADOPTED BY ORDINANCE NO. 348.4759

AUGUST 20, 2013

RIVERSIDE COUNTY BOARD OF SUPERVISORS

