

**SUBMITTAL TO THE BOARD OF SUPERVISORS
COUNTY OF RIVERSIDE, STATE OF CALIFORNIA**

412 B



FROM: County Counsel/Planning

SUBMITTAL DATE:
August 8, 2013

SUBJECT: Ordinance No. 348.4762
District Five/District Five

RECOMMENDED MOTION: That the Board of Supervisors adopt Ordinance No. 348.4762 amending the zoning in the Cherry Valley District shown on Map No. 31.027 Change of Zone Case No. 7718.

BACKGROUND: Change of Zone Case No. 7718 was tentatively approved by the Board of Supervisors on November 12, 2012.

Departmental Concurrence

Synthia M. Gunzel
SYNTHIA M. GUNZEL, Deputy County Counsel
PAMELA J WALLS, County Counsel

FINANCIAL DATA	Current F.Y. Total Cost:	\$ 0	In Current Year Budget:	N/A
	Current F.Y. Net County Cost:	\$ 0	Budget Adjustment:	N/A
	Annual Net County Cost:	\$ 0	For Fiscal Year:	N/A

SOURCE OF FUNDS:	Positions To Be Deleted Per A-30	<input type="checkbox"/>
	Requires 4/5 Vote	<input type="checkbox"/>

C.E.O. RECOMMENDATION: APPROVE
BY: *Tina Grande*
Tina Grande
County Executive Office Signature

- Policy
- Policy
- Consent
- Consent

Dept's Recomm.:
Per Exec. Ofc.:

3018 002 10 14 3: 58
COUNTY OF RIVERSIDE
PLANNING AND ZONING DEPARTMENT
RIVERSIDE, CALIFORNIA

1 ORDINANCE NO. 348.4762

2 AN ORDINANCE OF THE COUNTY OF RIVERSIDE

3 AMENDING ORDINANCE NO. 348 RELATING TO ZONING

4 The Board of Supervisors of the County of Riverside ordains as follows:

5 Section 1. Section 4.1 of Ordinance No. 348, and Cherry Valley District Zoning Plan
6 Map No. 31. as amended, are further amended by placing in effect in the zone or zones as shown on the
7 map entitled "Change of Official Zoning Plan, Cherry Valley District, Map No. 31.027 Change of Zone
8 Case No. 7718," which map is made a part of this ordinance.

9 Section 2. This ordinance shall take effect 30 days after its adoption.

10
11 BOARD OF SUPERVISORS OF THE COUNTY
12 OF RIVERSIDE, STATE OF CALIFORNIA

13
14 By: _____
Chairman, Board of Supervisors

15 ATTEST:

16 Clerk of the Board

17
18 By: _____
Deputy

19
20 (SEAL)

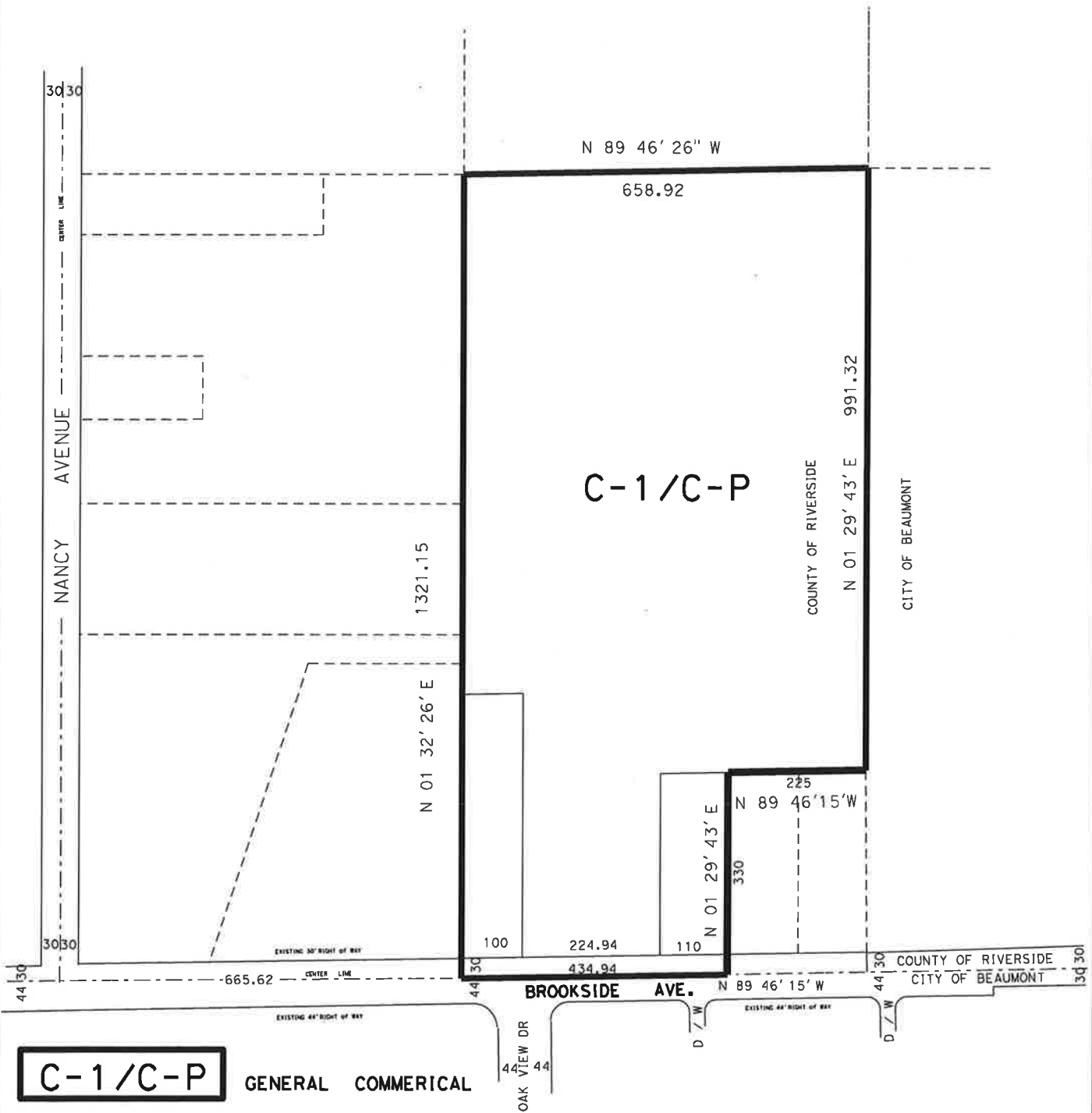
21
22 APPROVED AS TO FORM
23 August 8, 2013

24 By: Synthia M. Gunzel
25 SYNTHIA M. GUNZEL
26 Deputy County Counsel

27 SMG/mdk
08/08/13

28 G:\PROPERTY\MDUSEK\CZ ZONING ORD & FORM11\FORMAT.348\4762.DOC

SEC 28 T.2S. R.1W. SBB&M



C-1/C-P

GENERAL COMMERCIAL

MAP NO. 31.027

CHANGE OF OFFICIAL ZONING PLAN

CHERRY VALLEY DISTRICT

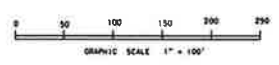
CHANGE OF ZONE CASE NO 7718

AMENDING ORDINANCE NO 348

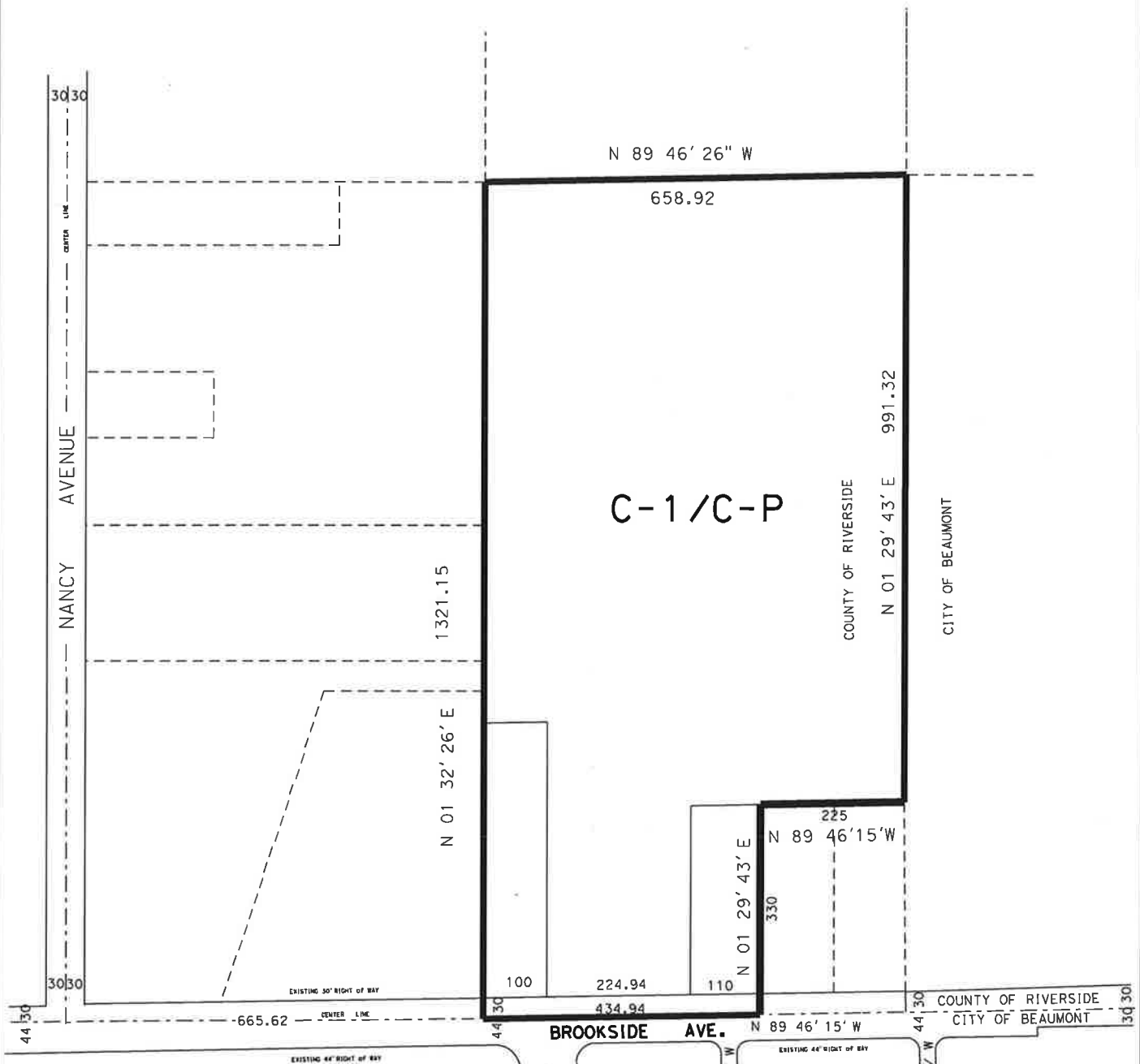
ADOPTED BY ORDINANCE NO.348.4762

AUGUST 20 2013

SCALE 1" = 100'



SEC 28 T.2S. R.1W. SBB&M



C-1/C-P

GENERAL COMMERCIAL

MAP NO. 31.027

CHANGE OF OFFICIAL ZONING PLAN
CHERRY VALLEY DISTRICT

CHANGE OF ZONE CASE NO 7718
 AMENDING ORDINANCE NO 348
 ADOPTED BY ORDINANCE NO.348.4762
 AUGUST 20 2013

SCALE 1" = 100'

