

861

**SUBMITTAL TO THE BOARD OF SUPERVISORS  
COUNTY OF RIVERSIDE, STATE OF CALIFORNIA**



**FROM:** County Counsel/Planning

**SUBMITTAL DATE:**  
September 12, 2013

**SUBJECT:** Ordinance No. 348.4765  
District Three/District Three

**RECOMMENDED MOTION:** That the Board of Supervisors Adopt Ordinance No. 348.4765 amending the zoning in the Homeland and Winchester Area shown on Map No. 2.2352 Change of Zone No. 7768.

**BACKGROUND:**  
Summary

Change of Zone Case No. 7768 was tentatively approved by the Board of Supervisors on May 14, 2013.

Departmental Concurrence

*Synthia M. Gunzel*

Synthia M. Gunzel  
Deputy County Counsel  
Pamela J. Walls, County Counsel

FINANCIAL DATA	Current Fiscal Year:	Next Fiscal Year:	Total Cost:	Ongoing Cost:	POLICY/CONSENT (per Exec. Office)
COST	\$ N/A	\$ N/A	\$ N/A	\$ N/A	Consent <input checked="" type="checkbox"/> Policy <input type="checkbox"/>
NET COUNTY COST	\$ N/A	\$ N/A	\$ N/A	\$ N/A	

<b>SOURCE OF FUNDS:</b>	<b>Budget Adjustment:</b>
	<b>For Fiscal Year:</b>

**C.E.O. RECOMMENDATION:** APPROVE

BY: *Tina Grande*  
Tina Grande

County Executive Office Signature

**MINUTES OF THE BOARD OF SUPERVISORS**

SEP 13 5:38 PM '13  
COUNTY OF RIVERSIDE  
RECEIVED

- A-30
- Positions Added
- 4/5 Vote
- Change Order

**SUBMITTAL TO THE BOARD OF SUPERVISORS, COUNTY OF RIVERSIDE, STATE OF CALIFORNIA**

**FORM 11: Ordinance No. 348.4765**

District Three/District Three

**DATE:** September 12, 2013

**PAGE:** Page 2 of 2

**BACKGROUND:**

**Impact on Citizens and Businesses**

The zoning ordinance is associated with a private land owner's development application. Since it is fully funded by this private land owner, it will not have an impact on citizens and businesses.

**SUPPLEMENTAL:**

**Additional Fiscal Information**

N/A

**Contract History and Price Reasonableness**

N/A

**ATTACHMENTS (if needed, in this order):**

A. Ordinance

1    ORDINANCE NO. 348.4765

2    AN ORDINANCE OF THE COUNTY OF RIVERSIDE  
3    AMENDING ORDINANCE NO. 348 RELATING TO ZONING  
4

5                                The Board of Supervisors of the County of Riverside ordains as follows:

6                                Section 1.        Section 4.1 of Ordinance No. 348, and official Zoning Plan Map No. 2, as  
7 amended, are further amended by placing in effect in the Homeland and Winchester Area, the zone or  
8 zones as shown on the map entitled "Change of Official Zoning Plan Amending Ordinance No. 348, Map  
9 No. 2.2352, Change of Zone Case No. 7768" which map is made a part of this ordinance.

10                              Section 2.        This ordinance shall take effect 30 days after its adoption.

11    BOARD OF SUPERVISORS OF THE COUNTY  
12    OF RIVERSIDE, STATE OF CALIFORNIA

13    By: \_\_\_\_\_  
14    Chairman, Board of Supervisors

15 ATTEST:

16 Clerk of the Board

17  
18 By: \_\_\_\_\_  
19        Deputy

20 (SEAL)  
21

22 APPROVED AS TO FORM  
23 September 12, 2013

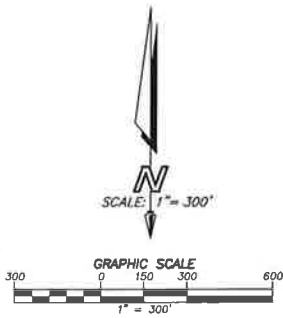
24  
25 By: Synthia M. Gunzel  
26        SYNTHIA M. GUNZEL  
27        Deputy County Counsel  
28

# HOMELAND AND WINCHESTER AREA

SEC. 18, T.5 S., R.2 W. S.B.B. & M.

### ASSESSOR'S PARCEL NUMBER LIST:

APN
A 459-040-006
B 459-040-003
C 459-040-004
D 459-040-005
E 459-040-011
F 459-040-015
G 459-040-014
H 459-040-013
I 459-040-012
J 459-040-017
K 459-040-016
L 459-060-023
M 459-060-020
M 459-060-021
M 459-060-022
N 459-060-018
O 459-060-001
P 459-060-006
Q 459-060-007
Q 459-060-008
Q 459-060-009
Q 459-060-010
R 459-060-003
S 459-060-004
S 459-060-005
T 459-060-011
U 459-060-012
V 459-060-013
V 459-060-014
W 459-060-015
X 459-060-030
Y 459-060-029
Z 459-060-033
AA 459-060-031
BB 459-060-032
CC 459-060-026
CC 459-060-027
CC 459-060-028
CC 459-060-034
DD 459-060-024
EE 461-020-008

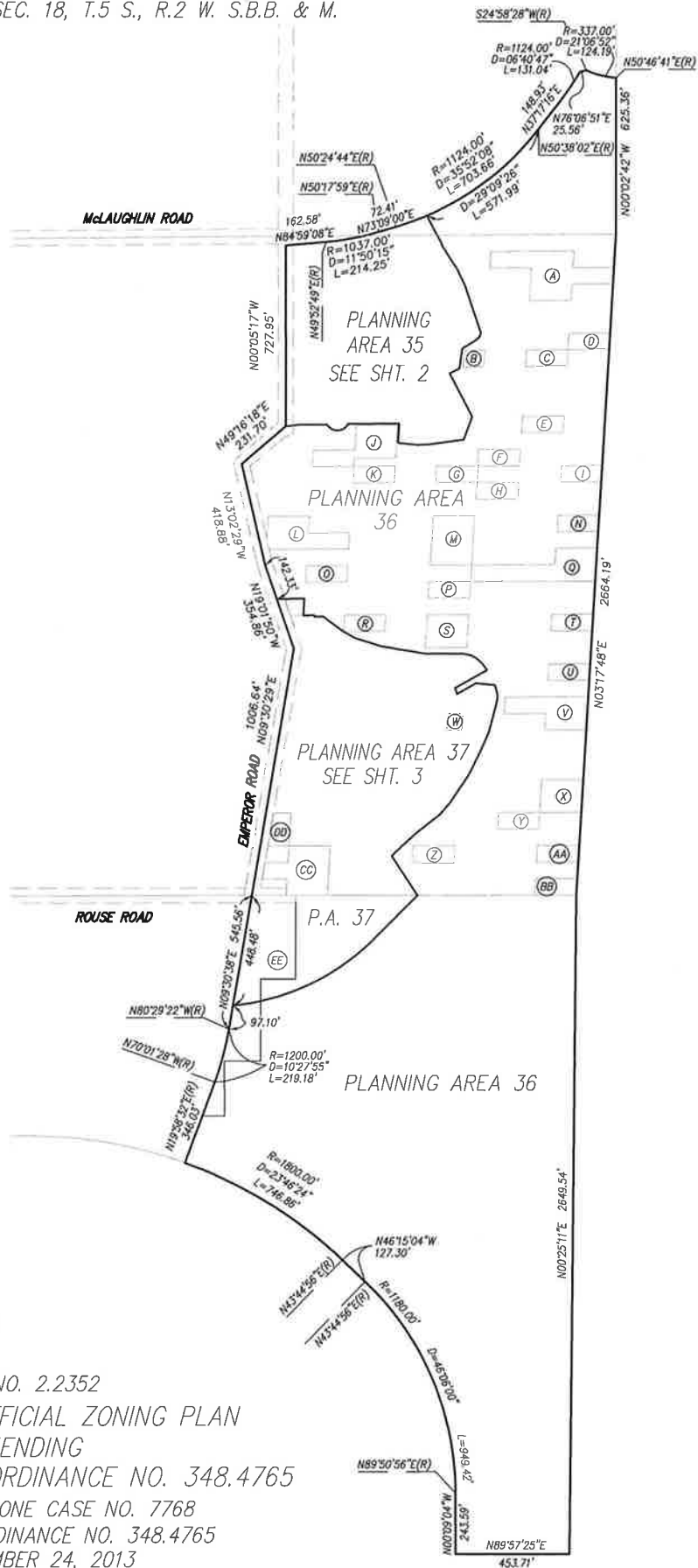


### LEGEND

SP ZONE

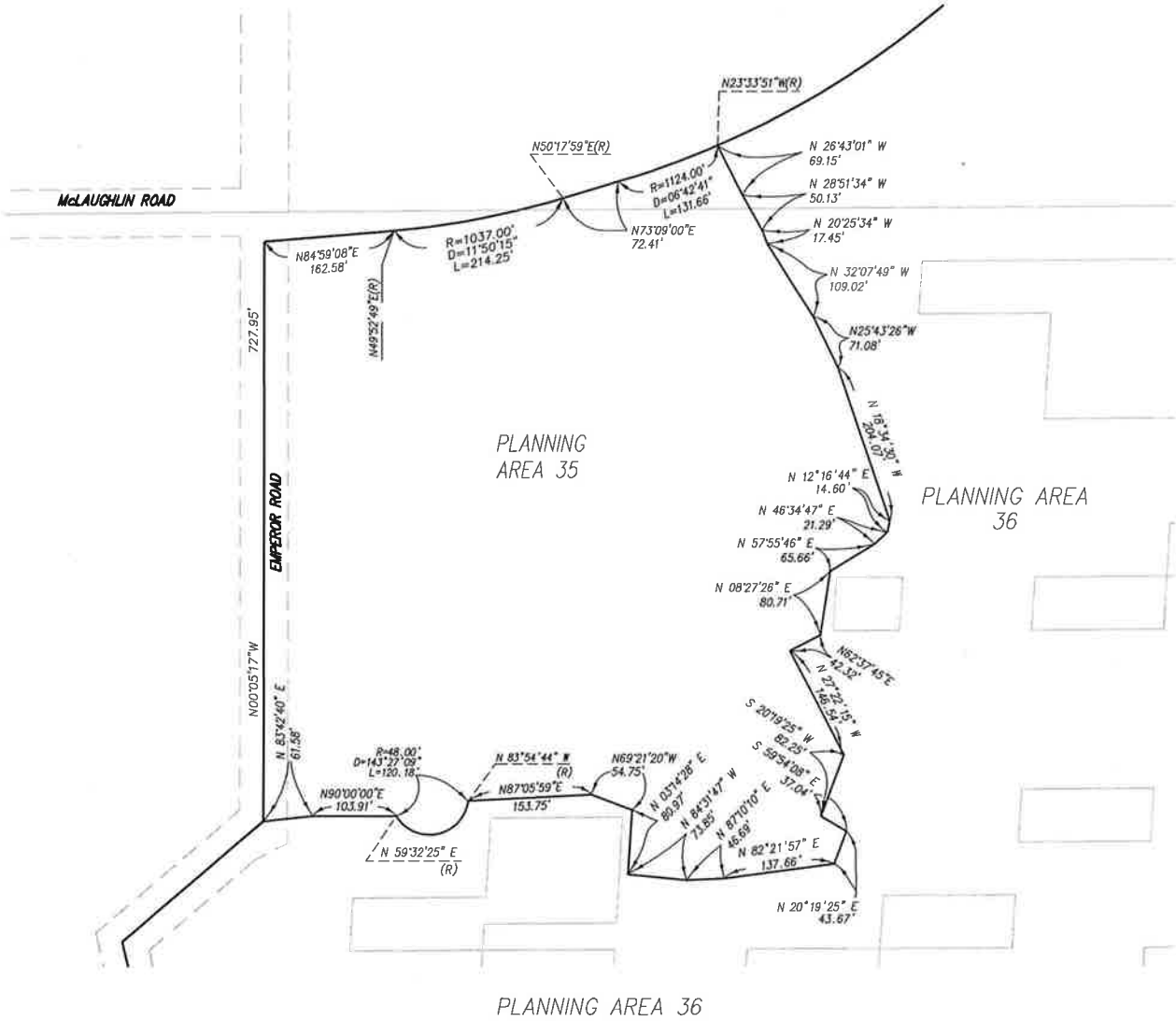
SPECIFIC PLAN (SP260)

MAP NO. 2.2352  
CHANGE OF OFFICIAL ZONING PLAN  
AMENDING  
MAP NO. 2.2352, ORDINANCE NO. 348.4765  
CHANGE OF ZONE CASE NO. 7768  
ADOPTED BY ORDINANCE NO. 348.4765  
SEPTEMBER 24, 2013  
RIVERSIDE COUNTY BOARD OF SUPERVISORS



# HOMELAND AND WINCHESTER AREA

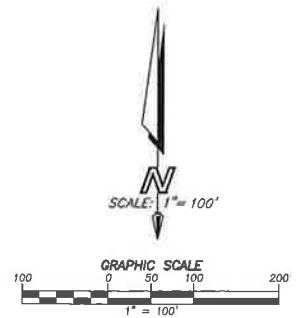
SEC. 18, T.5 S., R.2 W. S.B.B. & M.



LEGEND  
SP ZONE

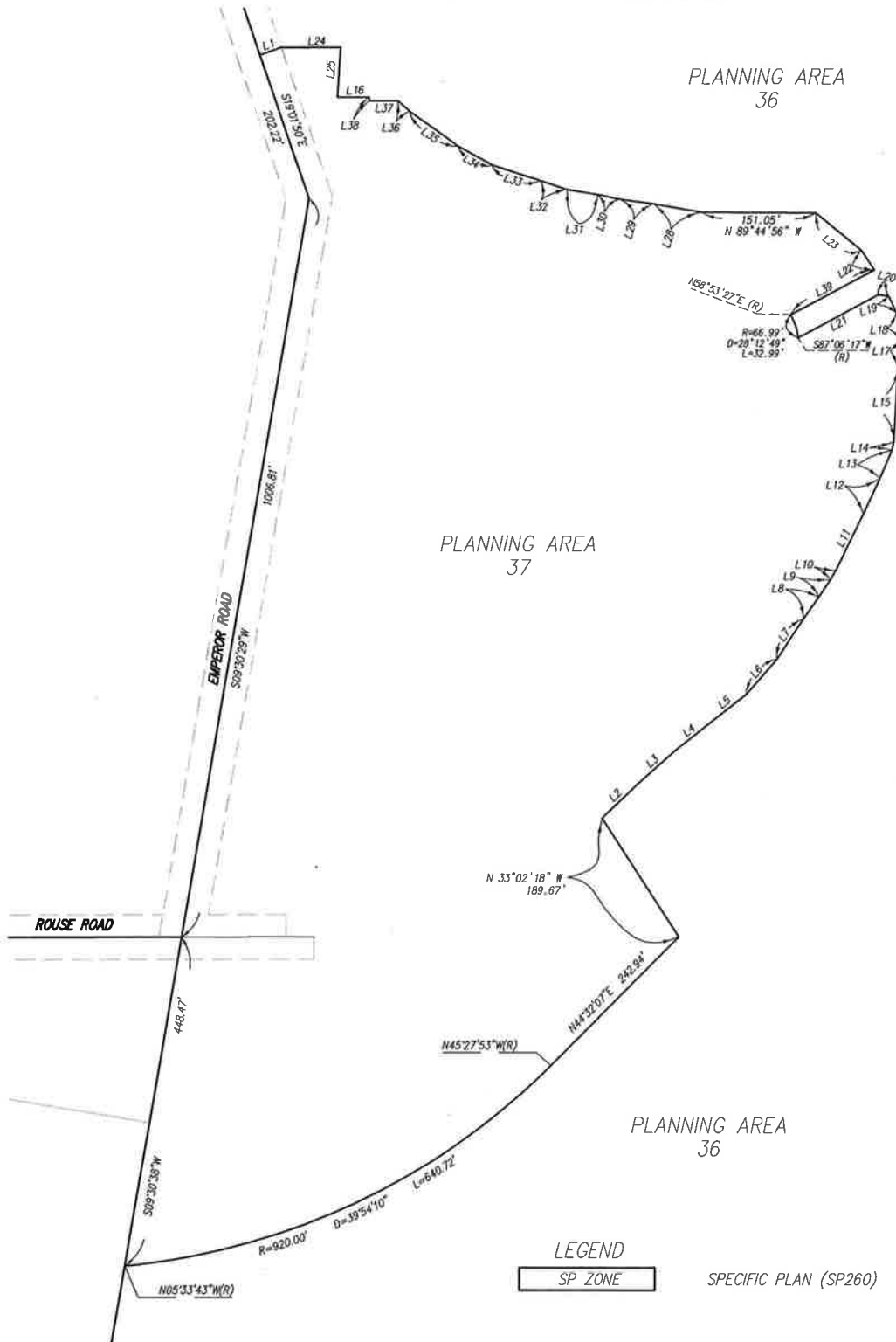
SPECIFIC PLAN (SP260)

MAP NO. 2.2352  
CHANGE OF OFFICIAL ZONING PLAN  
AMENDING  
MAP NO. 2.2352, ORDINANCE NO. 348.4765  
CHANGE OF ZONE CASE NO. 7768  
ADOPTED BY ORDINANCE NO. 348.4765  
SEPTEMBER 24, 2013  
RIVERSIDE COUNTY BOARD OF SUPERVISORS



# HOMELAND AND WINCHESTER AREA

SEC. 18, T.5 S., R.2 W. S.B.B. & M.



LINE TABLE		
NO.	BEARING	LENGTH
L1	S 70° 57' 11" W	29.88'
L2	N 46° 08' 48" E	66.66'
L3	N 48° 10' 21" E	67.06'
L4	N 51° 01' 54" E	60.61'
L5	N 51° 27' 08" E	60.02'
L6	N 40° 41' 54" E	62.63'
L7	N 32° 49' 33" E	63.66'
L8	N 34° 40' 16" E	35.98'
L9	N 32° 56' 26" E	29.01'
L10	N 30° 02' 10" E	13.98'
L11	N 25° 51' 53" E	83.46'
L12	N 24° 24' 23" E	53.27'
L13	N 22° 44' 58" E	40.51'
L14	N 14° 06' 25" E	11.87'
L15	N 02° 55' 22" E	100.68'
L16	S 69° 44' 53" W	42.32'
L17	N 10° 05' 37" E	35.86'
L18	N 13° 12' 52" W	39.45'
L19	N 25° 17' 02" W	24.45'
L20	N 84° 57' 21" W	13.49'
L21	S 61° 31' 09" W	121.83'
L22	N 33° 42' 22" W	31.72'
L23	N 50° 42' 25" W	79.08'
L24	N 89° 44' 23" E	79.20'
L25	N 03° 24' 13" E	66.44'
L28	N 80° 18' 31" W	65.73'
L29	N 81° 59' 08" W	45.73'
L30	N 78° 32' 35" W	29.06'
L31	N 80° 37' 18" W	41.48'
L32	N 71° 47' 03" W	38.66'
L33	N 72° 17' 36" W	67.29'
L34	N 60° 53' 16" W	51.60'
L35	N 54° 15' 10" W	79.70'
L36	N 48° 06' 05" W	21.72'
L37	S 89° 44' 06" W	37.82'
L38	N 04° 09' 55" E	4.94'
L39	N 61° 31' 09" E	126.70'

MAP NO. 2.2352  
 CHANGE OF OFFICIAL ZONING PLAN  
 AMENDING  
 MAP NO. 2.2352, ORDINANCE NO. 348.4765  
 CHANGE OF ZONE CASE NO. 7768  
 ADOPTED BY ORDINANCE NO. 348.4765  
 SEPTEMBER 24, 2013  
 RIVERSIDE COUNTY BOARD OF SUPERVISORS

