

SUBMITTAL TO THE BOARD OF SUPERVISORS  
COUNTY OF RIVERSIDE, STATE OF CALIFORNIA

305B



FROM: County Counsel/Planning

SUBMITTAL DATE:  
October 24, 2013

SUBJECT: Ordinance No. 348.4769  
District Three/District Three [\$0]

RECOMMENDED MOTION: That the Board of Supervisors:  
Adopt Ordinance No. 348.4769 amending the zoning in the Homeland Area shown on Map No.  
2.2354 Change of Zone Case No. 7793.

BACKGROUND:

Summary

Change of Zone Case No. 7793 was tentatively approved by the Board of Supervisors on September 10, 2013.

Departmental Concurrence

Michelle Clack, Deputy County  
Counsel  
Pamela J. Walls, County Counsel

FINANCIAL DATA	Current Fiscal Year:	Next Fiscal Year:	Total Cost:	Ongoing Cost:	POLICY/CONSENT (per Exec. Office)
COST	\$ N/A	\$ N/A	\$ N/A	\$ N/A	Consent <input checked="" type="checkbox"/> Policy <input type="checkbox"/>
NET COUNTY COST	\$ N/A	\$ N/A	\$ N/A	\$ N/A	

SOURCE OF FUNDS:

Budget Adjustment:

For Fiscal Year:

C.E.O. RECOMMENDATION:

APPROVE

BY:

Tina Grande

County Executive Office Signature

MINUTES OF THE BOARD OF SUPERVISORS

☐ A-30

☐ Positions Added

☐ Change Order

☐ 4/5 Vote

Prev. Agn. Ref.: 09/10/13; 16.1

District: 3/3

Agenda Number:

2-12

**SUBMITTAL TO THE BOARD OF SUPERVISORS, COUNTY OF RIVERSIDE, STATE OF CALIFORNIA**

**FORM 11:** Ordinance No. 348.4769

District Three/District Three

**DATE:** October 24, 2013

**PAGE:** Page 2 of 2

**Impact on Citizens and Businesses**

This zoning ordinance is associated with a private land owner's development application. Since it is fully funded by this private land owner, it will not have an impact on citizens and businesses.

**SUPPLEMENTAL:**

**Additional Fiscal Information**

N/A

**Contract History and Price Reasonableness**

N/A

**ATTACHMENTS (if needed, in this order):**

A. Ordinance

1  
2  
3  
4  
5  
6  
7  
8  
9  
0  
1  
2  
3  
4  
5  
6  
7  
8  
9  
0  
1  
2  
3  
4  
5  
6  
7  
8

The Board of Supervisors of the County of Riverside ordains as follows:

Section 2. This ordinance shall take effect 30 days after its adoption.

By: \_\_\_\_\_  
Chairman, Board of Supervisors

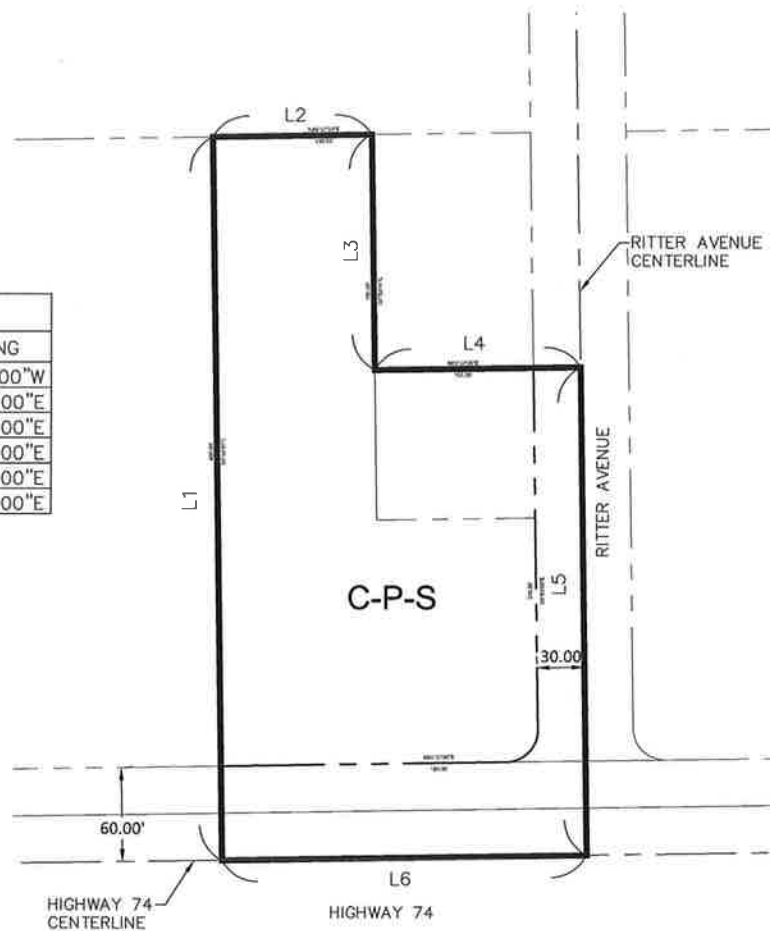
Clerk of the Board

(SEAL)

By:   
MICHELLE CLACK  
Deputy County Counsel

HOMELAND AREA  
SEC. 8 T. 5S., R. 2W. S.B.M

LINE TABLE		
LINE	LENGTH	BEARING
L1	460.00'	N00°53'00"W
L2	100.00'	N89°07'00"E
L3	150.00'	S00°53'00"E
L4	130.00'	N89°07'00"E
L5	310.00'	S00°53'00"E
L6	230.00'	N89°07'00"E



LEGEND

**C-P-S**

SCENIC HIGHWAY COMMERCIAL

MAP NO. 2.2354  
CHANGE OF OFFICIAL ZONING PLAN  
AMENDING

MAP NO. 2, ORDINANCE NO. 348

CHANGE OF ZONE CASE NO. 7793  
ADOPTED BY ORDINANCE NO. 348.4769

DATE: NOVEMBER 5, 2013  
RIVERSIDE COUNTY BOARD OF SUPERVISORS