

SUBMITTAL TO THE BOARD OF SUPERVISORS
COUNTY OF RIVERSIDE, STATE OF CALIFORNIA

882



FROM: Transportation and Land Management - TLMA

SUBMITTAL DATE:
September 18, 2013

SUBJECT: Wine Country Signage Program

RECOMMENDED MOTION: That the Board of Supervisors approve the proposed update to the Wine Country Design Guidelines.

BACKGROUND: The Wine Country Community Plan is coming before the Board for consideration (as a separate item on this same agenda). Signage is a critically important component of the implementation of the Wine Country Plan, in order to safely and efficiently guide travelers, reduce roadside clutter, and add to the attractiveness of the streetscapes along major roads.

This Item provides for approval of this update to the Wine Country Design Guidelines, which were approved by the Board on December 14, 2010. It fine-tunes the guidelines for the usage of signage of varying scale along Rancho California Road, the primary artery through the Wine Country, in order to communicate directions with a consistent design theme and sign placement.

REVIEWED BY EXECUTIVE OFFICE
DATE 08/29/13
Tina Grande

Juan C. Perez, Director of
Transportation and Land Management

JCP:dlp

Policy

Consent

Dept Recomm.:
Per Exec. Ofc.:

Policy

Consent

SEP 26 13 10:28
COUNTY OF RIVERSIDE
REGISTRATION DIVISION

Prev. Agn. Ref. 11/12/10, 16.4 &
12/14/10, 3.53

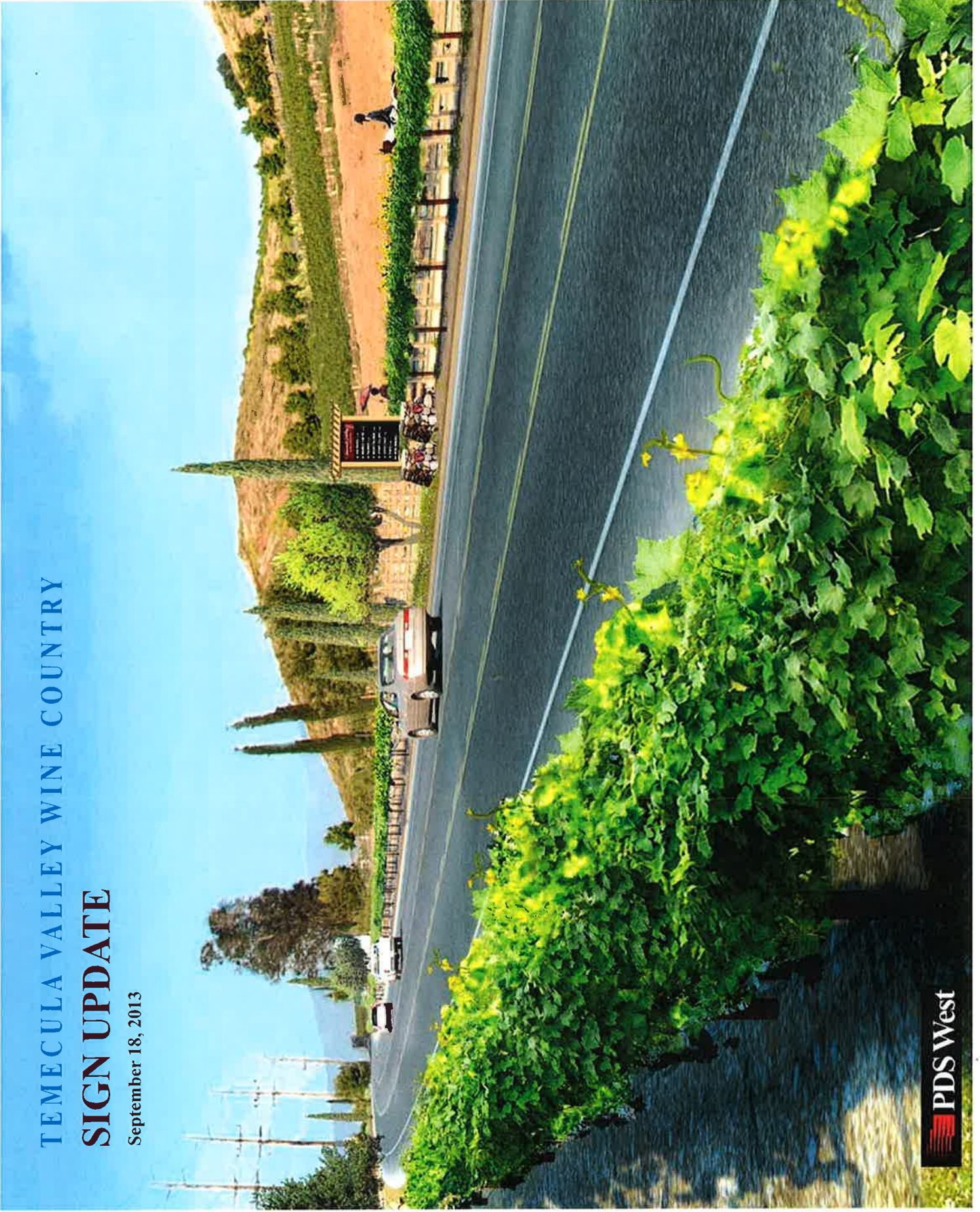
District: 3/3

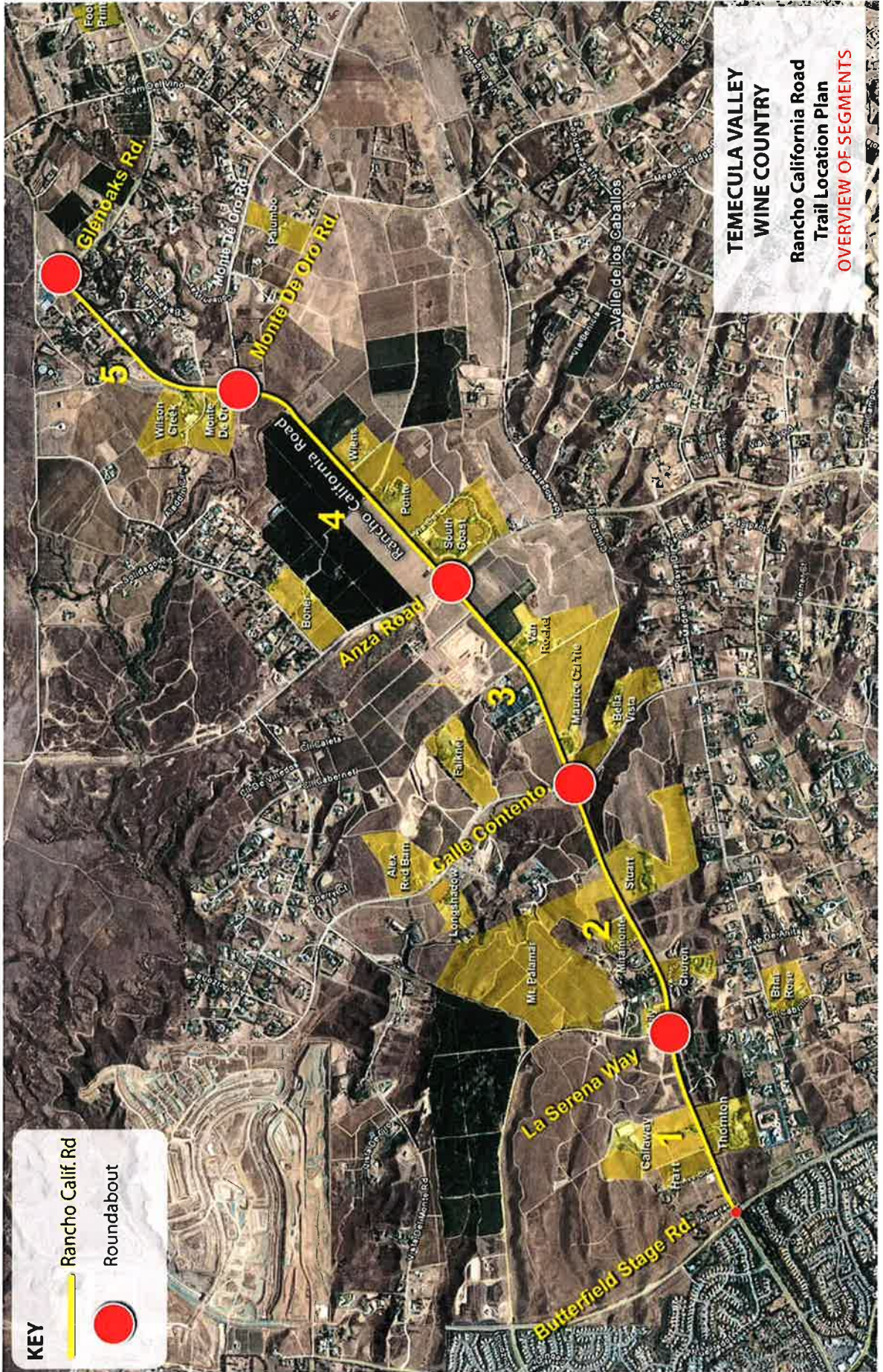
Agenda Number:

16-2

TEMECULA VALLEY WINE COUNTRY SIGN UPDATE

September 18, 2013

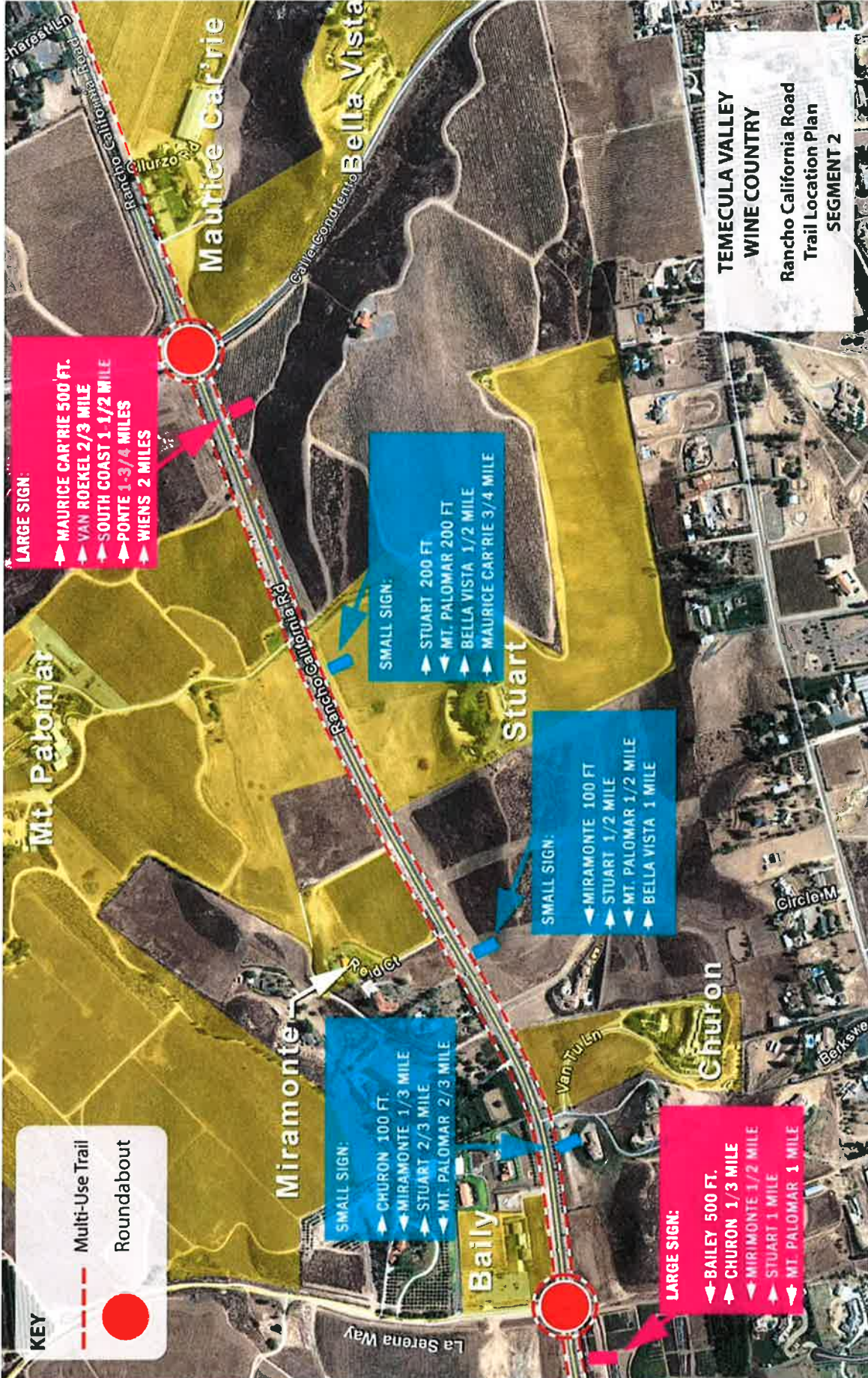




KEY

-  Rancho Calif. Rd
-  Roundabout

**TEMECULA VALLEY
WINE COUNTRY**
Rancho California Road
Trail Location Plan
OVERVIEW OF SEGMENTS



**TEMECULA VALLEY
WINE COUNTRY**
Rancho California Road
Trail Location Plan
SEGMENT 2

KEY

- Multi-Use Trail
- Roundabout

LARGE SIGN:

- MAURICE CAR'RIE 500 FT.
- VAN ROEKEL 2/3 MILE
- SOUTH COAST 1 1/2 MILE
- PONTE 1-3/4 MILES
- WIENS 2 MILES

SMALL SIGN:

- STUART 200 FT
- MT. PALOMAR 200 FT
- BELLA VISTA 1/2 MILE
- MAURICE CAR'RIE 3/4 MILE

SMALL SIGN:

- MIRAMONTE 100 FT
- STUART 1/2 MILE
- MT. PALOMAR 1/2 MILE
- BELLA VISTA 1 MILE

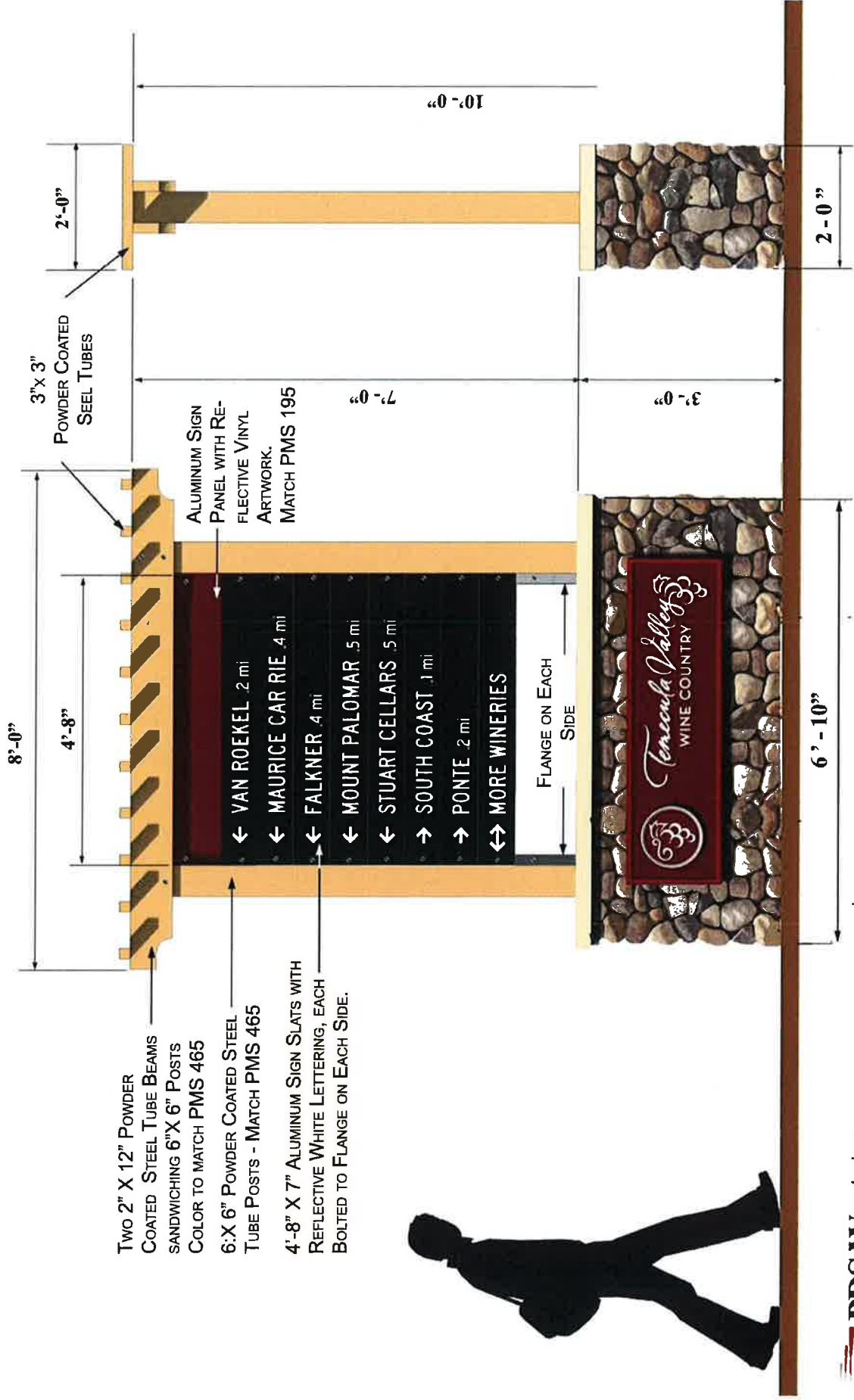
SMALL SIGN:

- CHURON 100 FT.
- MIRAMONTE 1/3 MILE
- STUART 2/3 MILE
- MT. PALOMAR 2/3 MILE

LARGE SIGN:

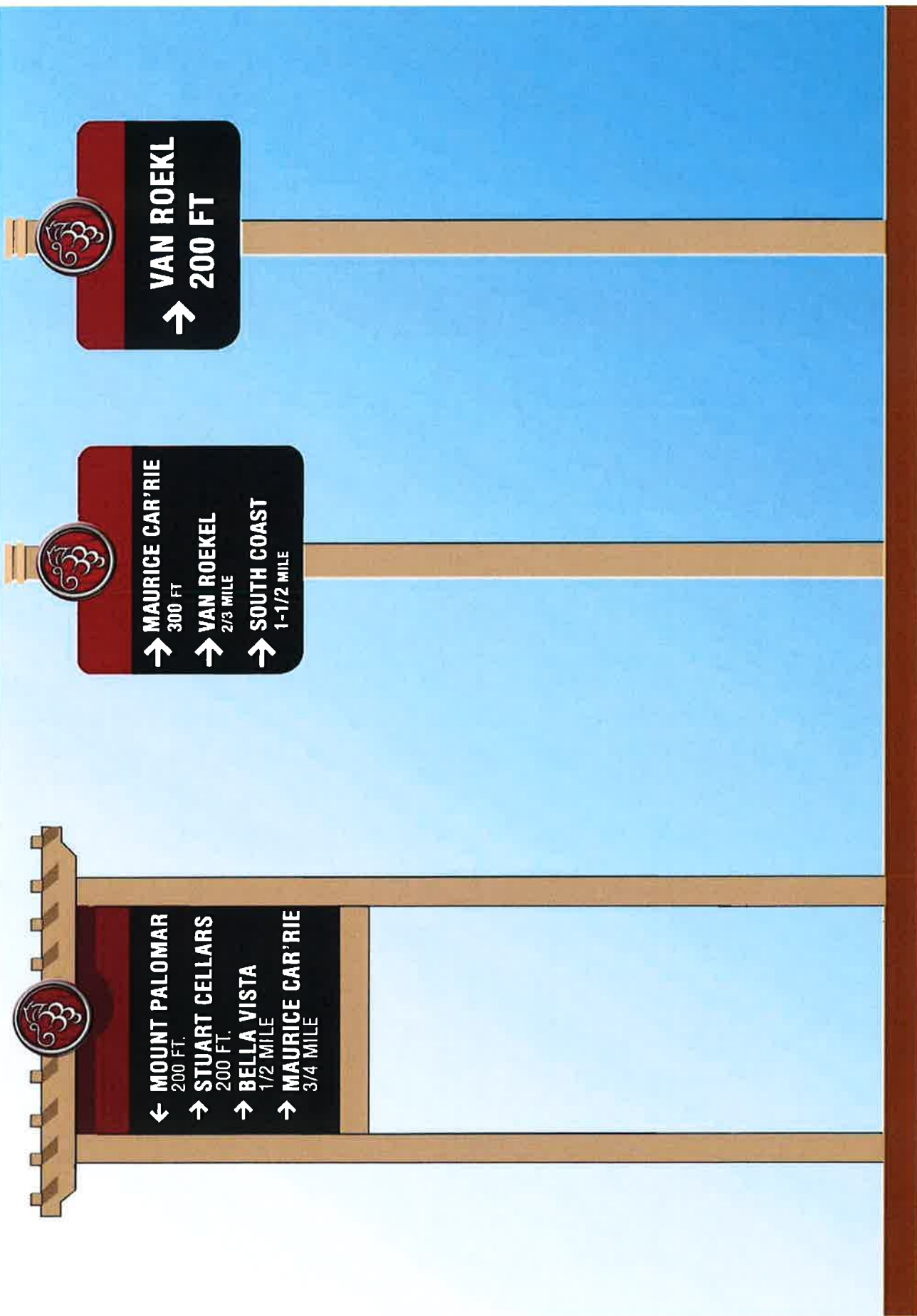
- BAILEY 500 FT.
- CHURON 1/3 MILE
- MIRIMONTE 1/2 MILE
- STUART 1 MILE
- MT. PALOMAR 1 MILE

Chares Hill
Rancho California Road
Cilurzo Rd
Maurice Car'rie
Calle Conditto
Bella Vista
Mt. Palomar
Stuart
Miramonte
Baily
Churon
Van Tulen
Circle M
Berksw
La Serena Way



- Two 2" X 12" Powder Coated Steel Tube Beams Sandwicing 6" X 6" Posts Color to Match PMS 465
- 6: X 6" Powder Coated Steel Tube Posts - Match PMS 465
- 4'-8" X 7" Aluminum Sign Slats with Reflective White Lettering, Each Bolted to Flange on Each Side.





SMALL WAYFINDING SIGNS -1A