

**SUBMITTAL TO THE BOARD OF SUPERVISORS
COUNTY OF RIVERSIDE, STATE OF CALIFORNIA**

852
A



FROM: Office on Aging

SUBMITTAL DATE:
April 30, 2015

SUBJECT: Office on Aging – Riverside County Advisory Council on Aging’s Annual Report for FY 2013-2014. [Districts – All] [Total Cost: \$0]

RECOMMENDED MOTION: That the Board of Supervisors:

1. Receive and file the Riverside County Advisory Council on Aging’s Annual Report for FY 2013-2014.

BACKGROUND:

Summary

Seventeen volunteer community leaders (five appointed by the Board of Supervisors) comprise the Advisory Council on Aging in Riverside County. This Council is mandated under the provisions of the Older Americans Act to provide planning recommendations and policy guidance to the Office on Aging and the Board of Supervisors and advocacy to seniors and disabled adults in Riverside County. The Council is also mandated to issue an annual report to the community on their activities and accomplishments. The attached Annual Report summarizes the scope and depth of their contribution to fiscal year 2013-2014.

(Continued on Page 2)

Michele Haddock
Michele Haddock
Director

FINANCIAL DATA	Current Fiscal Year:	Next Fiscal Year:	Total Cost:	Ongoing Cost:	POLICY/CONSENT (per Exec. Office)
COST	\$ 0	\$ 0	\$ 0	\$ 0	Consent <input checked="" type="checkbox"/> Policy <input type="checkbox"/>
NET COUNTY COST	\$ 0	\$ 0	\$ 0	\$ 0	

SOURCE OF FUNDS: Not Applicable

Budget Adjustment: No

For Fiscal Year: 2014-15

C.E.O. RECOMMENDATION:

APPROVE

BY:

County Executive Office Signature

Lani Sison
Lani Sison

MINUTES OF THE BOARD OF SUPERVISORS

- ☐ A-30
☐ 4/5 Vote
☐ Positions Added
☐ Change Order

Prev. Agn. Ref.:

District:

Agenda Number:

2-6

**SUBMITTAL TO THE BOARD OF SUPERVISORS, COUNTY OF RIVERSIDE, STATE OF CALIFORNIA
FORM 11: Office on Aging – Riverside County Advisory Council on Aging’s Annual Report for FY
2013-2014. [Districts – All] [Total Cost: \$0]**

DATE: April 30, 2015

PAGE: 2 of 2

BACKGROUND:

Impact on Residents and Businesses

As is evidence in the Annual Report, the Riverside County Advisory Council on Aging is a group of seasoned and diverse community leaders committed to each other and to the process of consensus building to meet the needs of older adults, persons with disabilities, and caregivers in Riverside County.

Attachments

- A. Riverside County Advisory Council on Aging 2013-2014 Annual Report.



**RIVERSIDE COUNTY ADVISORY
COUNCIL ON AGING**

2013 - 2014 ANNUAL REPORT

Advocacy, Education & Action!

TABLE OF CONTENTS

Message from the Advisory Council Chair	Page 3
Riverside County Advisory Council on Aging Membership	Page 4
Advisory Council Committees	Page 5
Strategic Planning Committees	Page 6
Accomplishments - Advocacy	Page 7
Accomplishments - Education	Page 8
Accomplishments - Action	Page 10
Acknowledgments	Page 11
Professional Development	Page 12
Riverside County Board of Supervisors	Page 13



MESSAGE FROM THE ADVISORY COUNCIL CHAIR



The Advisory Council on Aging was created in 1974. The Council is composed of seventeen volunteer members mandated under the Older Americans Act and Older Californians Act to serve in an advisory capacity to the Riverside County Office on Aging, Board of Supervisors and as advocates on behalf of Riverside County's seniors and older adults with disabilities.

The Council is instrumental in the development of the Office on Aging's Strategic Plan on Aging by identifying priority legislative and regulatory issues, population trends, needs and emerging issues impacting seniors and older adults with disabilities in their community.

The Advisory Council proudly and aggressively advocates to improve services, counter negative attitudes towards ageism and implement positive changes in the lives of older adults in Riverside County.

On behalf of the Advisory Council, I extend my deepest appreciation to the Riverside County Board of Supervisors and the Office on Aging for their ongoing support of this Council and their valuable work to help Riverside County's seniors and older adults with disabilities have a better quality of life.

Thank you,

Gloria Sanchez, Advisory Council Chair,
District V Representative

"The best way to find yourself is to lose yourself in the service of others." ~Mahatma Gandhi

RIVERSIDE COUNTY ADVISORY COUNCIL ON AGING MEMBERSHIP

OUR MISSION

The Riverside County Advisory Council on Aging is a group of seasoned and diverse community leaders committed to each other and the process of consensus building to meet the needs of older adults, persons with disabilities, and caregivers in Riverside County.



Gloria J. Sanchez
Chair, 5th District



Gary Kelley
Vice Chair, 1st District



Jerry Corrales
Parliamentarian



Alice B. Chandler
2nd District



Erwin Fromm
Member



Bev Greer
Member



Ann Kasper
Member



Diana Camba
Member



Vee Maiden
Member



Sonja Martin
4th District



Diane Lewis
Member



Barbara Mitchell
Member



Doris Morgan
Member



Eileen Packer
Member



Leo Sullivan
Member



Patti Smith
3rd District



Louella Thornton
Member

ADVISORY COUNCIL COMMITTEES

The Advisory Council on Aging is organized into several committees. These committees perform several critical functions, to include focusing on the operations of the council, addressing critical community issues and conducting advocacy campaigns on behalf of vulnerable seniors and older adults with disabilities.

We make a living by what we get.
We make a life by what we give.

— Winston Churchill

EXECUTIVE COMMITTEE

CHAIR: GLORIA J. SANCHEZ

The Executive Committee oversees the operations of the Advisory Council. This Committee includes the Advisory Council Officers, the Chairs of each Strategic Plan Committee and other subcommittee Chairs.



BYLAWS COMMITTEE

CHAIR: JERRY CORRALES

Chaired by Parliamentarian, the Committee meets annually to review the Council's Bylaws. Any changes to the Bylaws made by a quorum of members will not include members on a formal leave of absence. No changes were necessary in Fiscal Year 2013-14.

MEMBERSHIP COMMITTEE

CHAIR: VEE MAIDEN

The Committee directed the application/interview process for vacant positions, provided orientation and mentoring to new members and developed strategies for members training/development needs.



STRATEGIC PLANNING COMMITTEES

COMMUNITY CONNECTION COMMITTEE

CHAIR: PATTI SMITH

The Committee was responsible for setting the education agenda and work plan for the Advisory Council. In 2013/14 the Council explored topics such as emergency preparedness, HIV/AIDS, Cal Fresh, Alzheimer's disease, and a variety of mental health and elder abuse topics.



HEALTHY LIVING COMMITTEE

CHAIR: BEV GREER

The Committee was responsible for guiding the Council's in-depth research into older adult nutrition and for developing the Nutrition Blueprint, which summarizes all of the key research information.

GRANDPARENTS RAISING GRANDCHILDREN TASK FORCE

CHAIR: SONJA MARTIN

The Task Force was responsible for highlighting issues for the more than 20,000 Riverside County grandparents who are raising their grandchildren. This year the Task Force focused on strategic planning and submitting proposed legislation to assist grandparents with grandchildren who live in 55+ communities.



LONG TERM SERVICES AND SUPPORTS STAKEHOLDER ADVISORY GROUP (LTSS- SAG)

CHAIR: ERWIN FROMM

The SAG consists of County service providers, non-profit and for-profit community organizations and consumers working to improve service delivery of long term services and supports for older adults.

ACCOMPLISHMENTS - ADVOCACY

CELL PHONE COLLECTION FOR SENIORS

911 Emergency Cell Phone Outreach Program

The Riverside County Office on Aging's 911 Cell Phone Program was created in 2001 to enhance the quality of life for older adults age 60+ and people with disabilities.

Older adults who live alone, are homebound, or may have difficulty reaching a landline phone can use a cell phone to connect to 911 without subscribing to a wireless service.

By encouraging community members to donate used cell phones to the program, the Advisory Council enabled seniors and older adults with disabilities to reach critical services when they need them most. Cell phones are donated to the Office on Aging and sent to a refurbishing plant for quality assurance testing. Recipients are given a cell phone in working condition to be used specifically for calling 911 Emergency Response Telephone Service.



**In 2013-2014, the Advisory Council collected
209 cell phones!**

OTHER ADVOCACY EFFORTS IN 2013/2014

During the 2013-2014 fiscal year, the Advisory Council on Aging supported and participated in several other advocacy efforts, writing letters to state and federal representatives in support of these important issues:

- ♦ Support for the California Senior Legislature (CSL) proposal providing grandparents and other relative caregivers living in 55+ communities a grace period of at least six (6) months after accepting custody of relative children in an emergency situation in order to make suitable housing accommodation for the children..
- ♦ AB 1534 and SB1153 in support of new legislation to regulate Residential Care Facilities for the Elderly (RCFE).
- ♦ Support for local transportation efforts to assist the older adult population with mobility options in their communities.

THE GRAYING OF AMERICA -- U.S. CENSUS PROJECTIONS



SOURCE: U.S. CENSUS BUREAU REPORT "TRENDS IN THE U.S. POPULATION: 2000"

ACCOMPLISHMENTS - EDUCATION

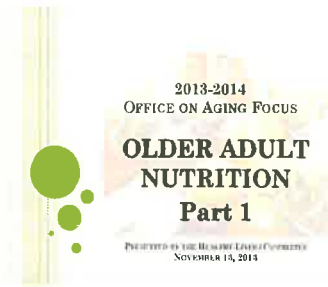
LIVE WELL & AGE WELL EDUCATION & EVENT SERIES

The Advisory Council worked with the Office on Aging by hosting several community events in 2014 to help older adults to “Live Well & Age Well” in their residences and communities. In 2013-2014, the focus was on nutrition, older adult employment, elder abuse prevention and caregiver support. Advisory Council members were instrumental in assisting with outreach and the facilitation of these events.



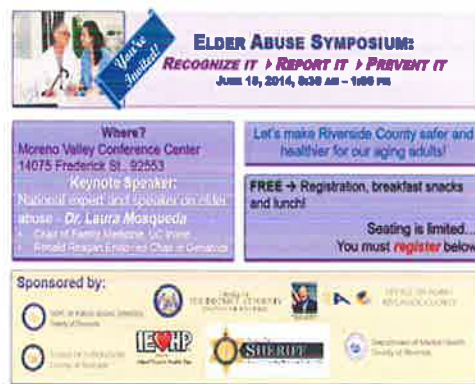
NUTRITION

In 2013-2014, the Advisory Council on Aging chose Older Adult Nutrition as it's "flagship" topic. Lead by the Healthy Living Committee, the Council embarked on a research and analysis project into the area of nutrition. In a three part-educational series the Council focused on the rise in poverty, situations of food scarcity among older adults, and the rationale behind how the minimal investment in senior nutrition programs (both congregate and home delivery) can save on more costly interventions and hospitalizations in the future. For every \$25 spent on home-delivered meals per year per person aged 65+, a decrease is seen in low-care nursing home populations of 1%. One day in a hospital is equal to 1 year of Office on Aging funded home delivered meals.



ELDER JUSTICE

Vulnerable older adults face high risks of financial, physical, and psychological abuse. Too often, abuse goes undetected or disregarded. In 2013/14, the Office on Aging coordinated with the Riverside County Board of Supervisors, the Department of Public Social Services, the District Attorney's Office and the Department of Mental Health to host an Elder Abuse Symposium to highlight the various types of elder abuse. Information provided at this event taught health practitioners and the public to identify signs of elder abuse and provided resources for assistance.



LIVE WELL AGE WELL EDUCATION & EVENT SERIES, CONT.

EMPLOYMENT



Did you know that 83% of Boomers intend to keep working after formal retirement and 55% of those will be looking for new professions? The idea of retirement is changing and Office on Aging is getting ready. In 2013/14, the Office on Aging launched the Enhanced Network of Community Opportunities & Resources for Employment (ENCORE) initiative, to assist older adult workers in Riverside County with post-retirement careers and employment. The program launched on May 24th with an educational program and various community partners.

CAREGIVING

In 2013/14, Vice Chair Patti Smith was the Master of Ceremonies for a two-day symposium for caregivers. The event, hosted by the Office on Aging featured speakers and classes designed to assist caregivers at every phase of the caregiving journey with the tips, tools and techniques that they need to remain in the caregiving process. Currently, more than 65 million people, 29% of the U.S. population, provide care for a chronically ill, disabled or aged family member or friend during any given year and spend an average of 20 hours per week providing care for their loved one and the value of these services provide for "free," is estimated to be \$375 billion a year. These caregivers are the main component of the system long-term supportive services that allow older adults to remain in their homes.

CLINTON HEALTH MATTERS INITIATIVE

On January 13, 2014, Office on Aging Director Michele Haddock participated in the 2014 Health Matters Conference hosted by Chelsea Clinton, Vice Chair of the Board of the Clinton Foundation and the City of Coachella. Ms. Clinton commended the Office on Aging for their efforts in serving the Coachella Valley's population of older adults. Approximately 170,000 senior residents live full or part-time in the Coachella Valley, according to the Health Assessment Resource Center (HARC) Community Health Monitor 2013 Executive Report. Of these residents, 15.7% live at or below the guidelines for poverty in 2013. Advisory Council Member Eileen Packer serves as the Chief Executive Officer of HARC.

ACCOMPLISHMENTS - ACTION

In Fiscal Year 2013/2014 attendance numbers reached 2,600 people in the Fit After 50 classes held at area Centers in Riverside County. Impressive numbers of participants were recorded in the rural and remote areas of Blythe and Mead Valley, indicating the desire to improve health and well being of our senior population.



This evidence-based program is offered for free to seniors. It is intended to help avoid falls and prolong independence by incorporating simple exercises that can increase strength, balance and flexibility. Nationwide, seniors claim that their independence is their “most valued possession.” The Fit After 50 program promoted by the Advisory Council has provided an avenue for older adults to preserve their independence and interact with area residents.

2013 3RD ANNUAL FOUNDATION GOLF TOURNAMENT



In 2013/2014 the Foundation on Aging worked with the Advisory Council and the Office on Aging to host the third annual Foundation on Aging Golf Tournament. The event raised \$25,000 for the Senior Center Holiday Meals Gift Card program. In December 2013, Advisory Council members delivered hundreds of gift cards to seniors throughout Riverside County. A special thanks goes out to the Board of Supervisors and our sponsors for their support.

ACKNOWLEDGEMENTS

2014 GEORGE TELISMAN MEMORIAL AWARD

The *George Telisman Memorial Award* was established in 1995 to recognize individuals from Riverside County who have provided outstanding leadership, dedication, and commitment to improving the lives of seniors and adults with disabilities. **Paul Van Doren** received the esteemed 2014 Telisman Memorial Award by the Board of Supervisors. Michele Haddock, Agency Director and Jerry Corrales, Parliamentarian participated in the presentation.



2014 Senior Inspiration Awards

The Advisory Council was instrumental in the coordination of the Annual Senior Inspiration Award Event where 11 men and women age 70 years and older were recognized for the time devoted to volunteering. Each honoree was given \$500 to donate to their favorite charity.



On November 20, 2013, Advisory Council Members Vee Maiden and Jerry Corrales participated in a Car Fit Event at the Moreno Valley Senior Center. The Office on Aging and the Honorable Supervisor Marion Ashley's office hosted the event. Ten (10) participants were fit into their cars and six (6) coordinators completed a two-day training.

You give but little when you give of your possessions. It is when you give of yourself that you truly give.

~~Kahlil Gibran

PROFESSIONAL DEVELOPMENT (2013-2014)



On February 27, 2014, the Office on Aging hosted the Advisory Council's annual Development Day: **"Passport to Aging"**. Visitors included 13 Advisory Council members and 3 Legislative Aids from the County Board of Supervisor's offices. The event began with refreshments and passport photos. Following the welcome and overview of the day, visitors were invited to journey into the daily activities of the Office on Aging. Passports were given to all visitors to collect stamps from each stop on this journey. A tour of the Office on Aging began at the Family Caregiver Support Program (Care Pathways) office. The tour continued on to visit each program and service unit where presentations and staff introductions were carried out. A total of 15 stickers were collected from the stops on the tour.

The journey came to a close with a Q & A session in which visitors gathered and discussed how seniors in Riverside County are impacted by the programs and services afforded by the agency.

Alzheimer's 101—Did You Know...

- ⇒ 90% of dementia is irreversible.
- ⇒ California is home to roughly 10% of our nation's people with Alzheimer's Disease (AD).
- ⇒ By 2030, the number of people living with AD in California will nearly double to over 1.1 million.
- ⇒ At least 25% of California's caregivers have been providing care for 6 years or more. And there are about 1.1 million Californians who provide unpaid care for a person with AD or dementia.
- ⇒ Because many caregivers miss work, reduce their work hours, or change jobs, California's employers experience an estimated \$1.4 billion in lost productivity annually.
- ⇒ The total monetary cost of providing care for someone with dementia is \$159-\$215 billion. It is the most costly disease in America at this time. This is more than heart disease and cancer.



On May 28, 2014, Advisory Council Chair Gloria Sanchez participated in the **Riverside County Conversation: The Future of the Workplace** symposium hosted by the Office on Aging. Approximately 85 professionals from both the public and private sectors attended the event. The Honorable County Supervisor John Tavaglione shared his support of the Mature Worker Initiative.

Riverside County Board of Supervisors



*Supervisor Kevin Jefferies
District I*



*Supervisor Jeff Stone
District III*



*Supervisor Marion Ashley
District V*



*Supervisor John Tavaglione
District II*



*Supervisor John J. Benoit
District IV*

The Advisory Council is thankful to the Board of Supervisors for their support and attention to the ongoing effort to improve the overall welfare of our seniors.



**RIVERSIDE COUNTY
ADVISORY COUNCIL ON AGING**

1-800-510-2020

(951) 867-3800
TTL (951) 697-4699
FAX (951) 867-3830
www.rcaging.org
www.riverside.networkofcare.org
Email: rcaging@rcaging.org



RIVERSIDE COUNTY OFFICE ON AGING
6296 River Crest Drive, Suite K
Riverside, Ca. 92507

