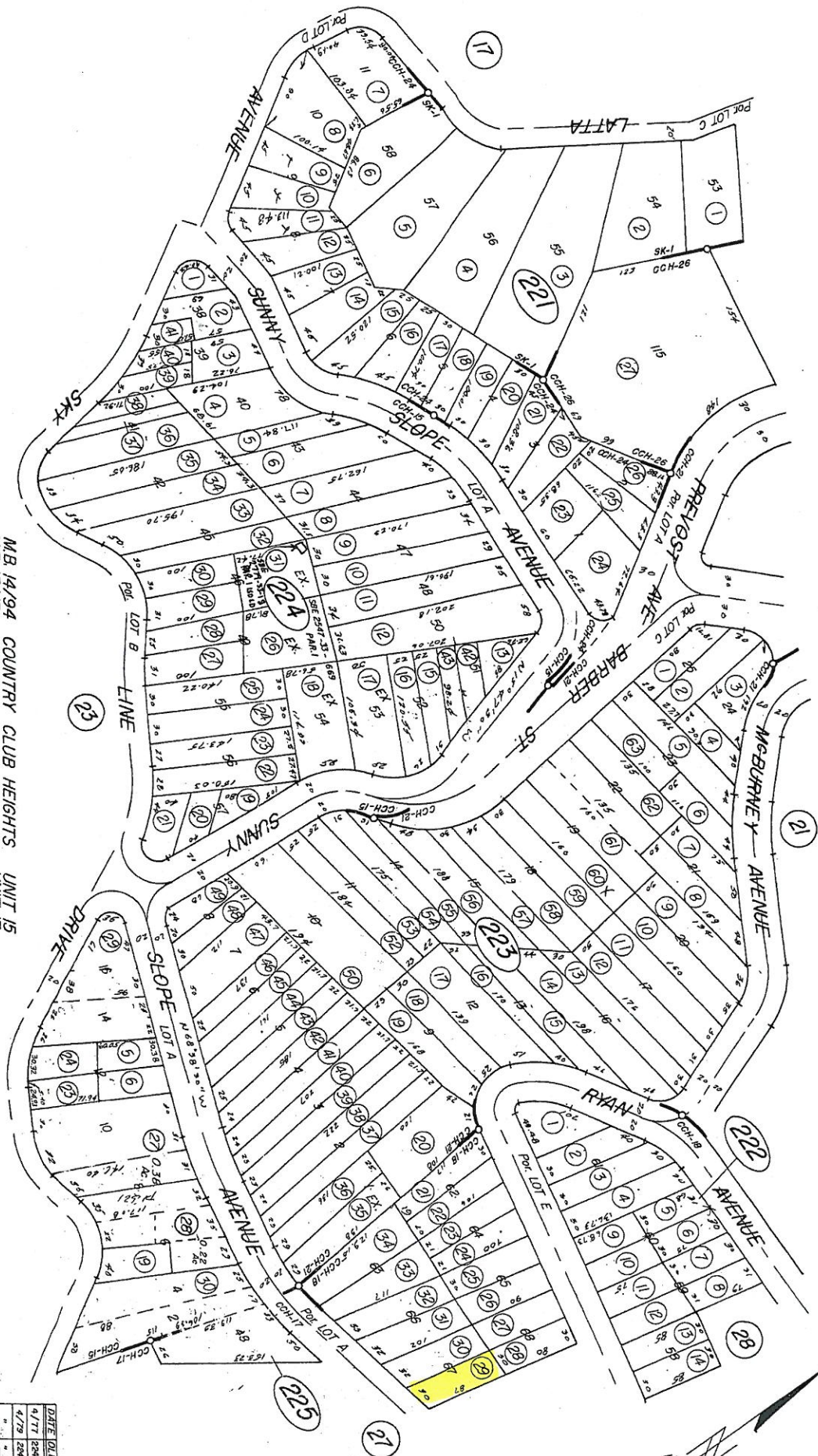


THIS MAP IS FOR
ASSESSMENT PURPOSES ONLY

POR. RO. LA LAGUNA
(POR. SEC. 16S. R5W)

T. R. A. 505

18-28, 18-29, (1, 3, 4, 5)
375-22



ASSESSOR'S MAP BK. 375 PG. 22

- MB 14/94 COUNTRY CLUB HEIGHTS UNIT 15
- MB 15/13 " " " " UNIT 17
- MB 15/37 " " " " UNIT 18
- MB 15/62 " " " " UNIT 21
- MB 16/71 " " " " UNIT 24
- MB 17/79-80 " " " " UNIT 26
- MB 18/60-61 " SUNSET " KNOLLS " UNIT 1

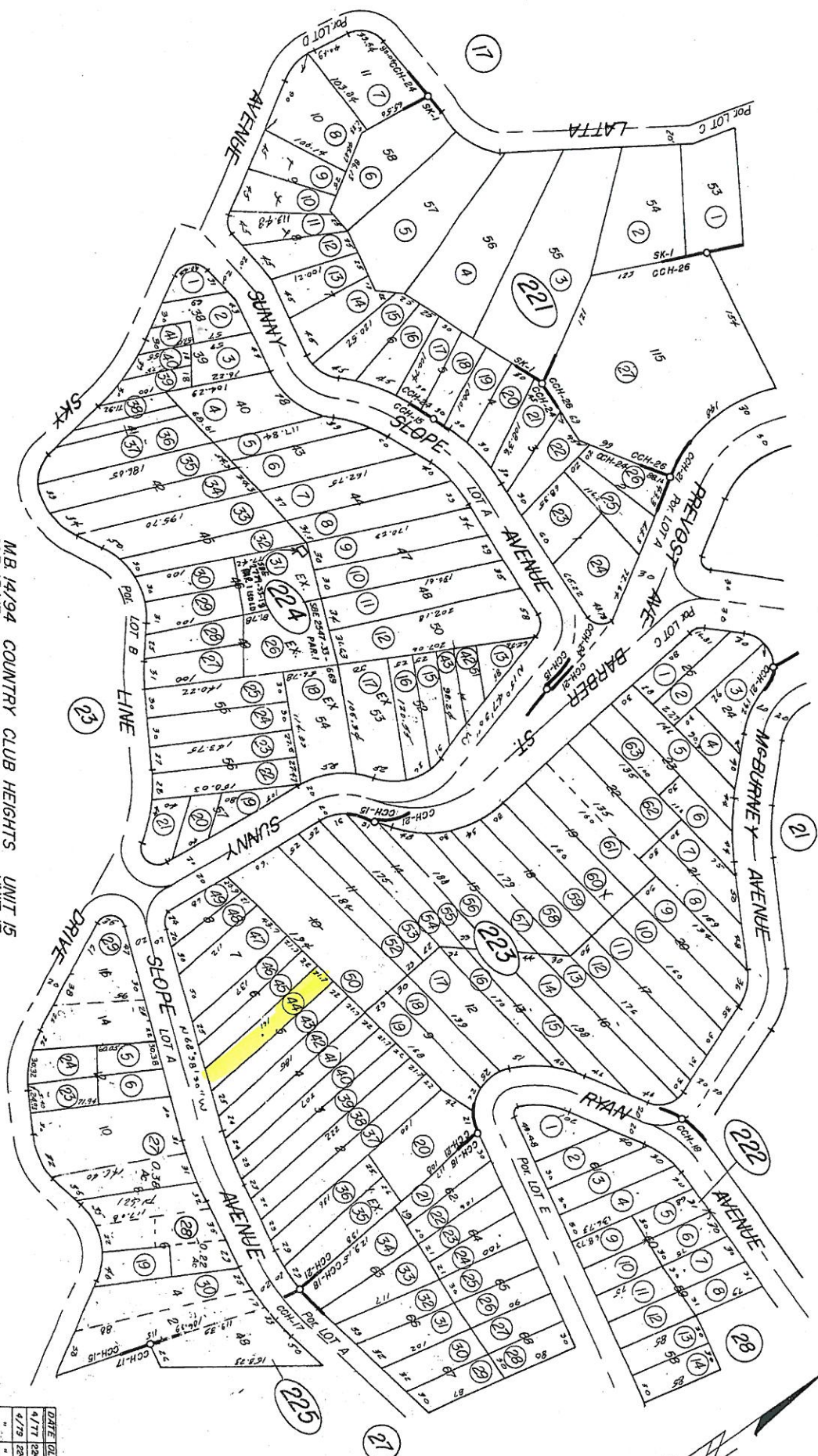
DATE	OLD NO.	NEW NO.
4/77	284-014	482-113
4/79	284-695	28
"	631	31
2/82	272-265	27
10/90	10-18-20	28
2-07	17-24	222-430
3/03	13-18	222-30

THIS MAP IS FOR
ASSESSMENT PURPOSES ONLY

POR RO LA LAGUNA
(POR SEC 1 T6S R5W)

T.R. A. 505

375-22
18-28, 18-29-(1, 3, 4, 5)



- MB 14/94 COUNTRY CLUB HEIGHTS UNIT 15
- MB 15/13 " " " " UNIT 17
- MB 15/37 " " " " UNIT 18
- MB 15/62 " " " " UNIT 24
- MB 16/71 " " " " UNIT 24
- MB 17/9-80 " " " " UNIT 26
- MB 18/60-61 " SUNSET " " " " UNIT 1

DATE	OLD NO.	NEW NO.
1/77	224-015	48-145
4/79	224-056	28
"	631	31
2/87	225-5	27
10/90	10-12-20	89
2-97	225-225-125	
3/03	12-18	225-30

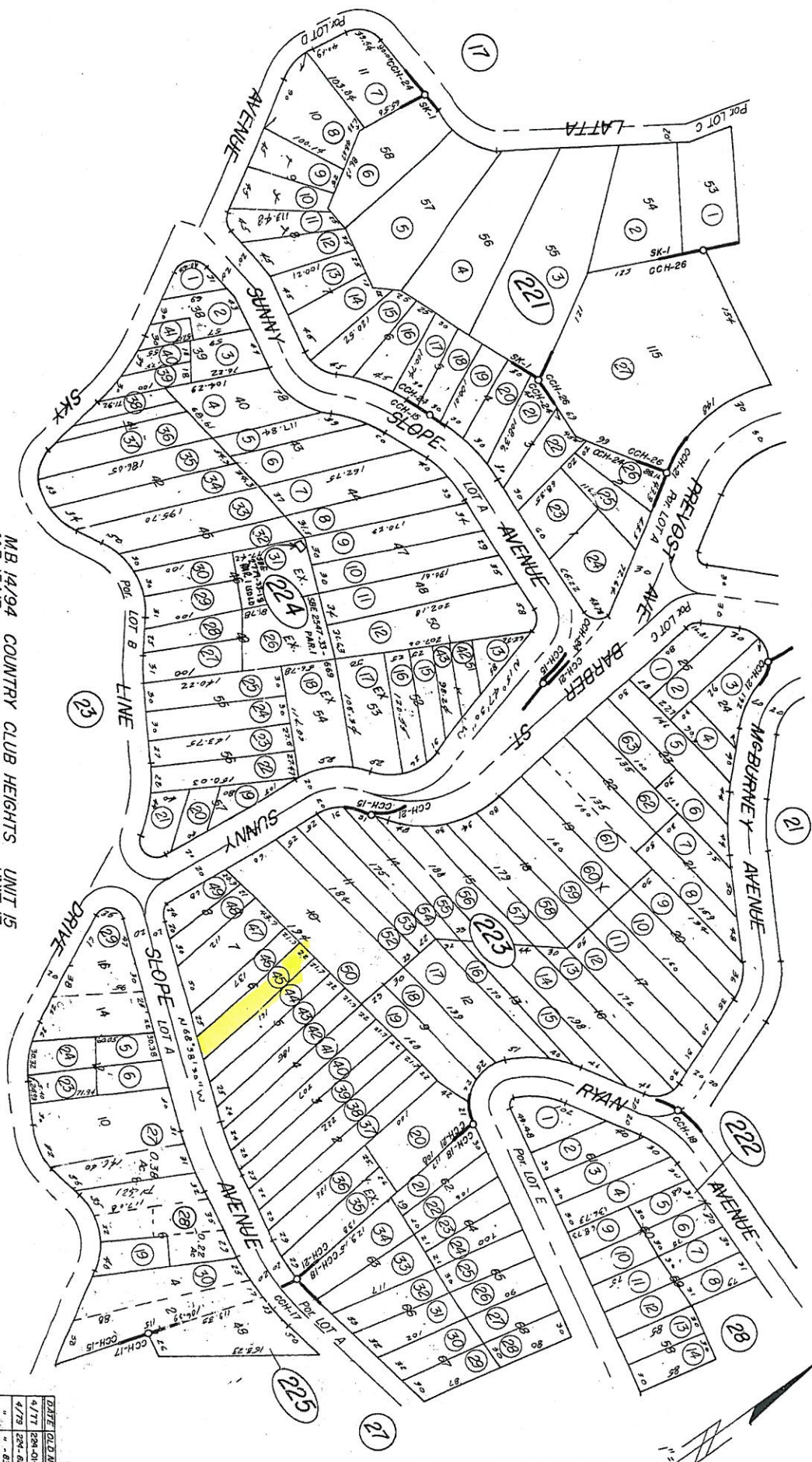
THIS MAP IS FOR
ASSESSMENT PURPOSES ONLY

POR. RO. LA LAGUNA
(POR. SEC. 1 T6S R5W)

T.R. A. 505

18-28, 18-29-(1,3,4,5)

375-22



- M.B. 14/94 COUNTRY CLUB HEIGHTS UNIT 15
- M.B. 15/13 " " " UNIT 17
- M.B. 15/37 " " " UNIT 18
- M.B. 15/62 " " " UNIT 24
- M.B. 16/77 " " " UNIT 26
- M.B. 17/73-80 " " " UNIT 1
- M.B. 18/60-61 " " " UNIT 1

ASSESSOR'S MAP BK. 375 PG. 22

DATE	OLD NO.	NEW NO.
4/77	224-015	48-345
4/79	224-015	48-345
"	631	31-
2/02	27-243	27-
10/90	10-18-30	88
2-97	1-7-25	225-29
3/03	13-18	225-30

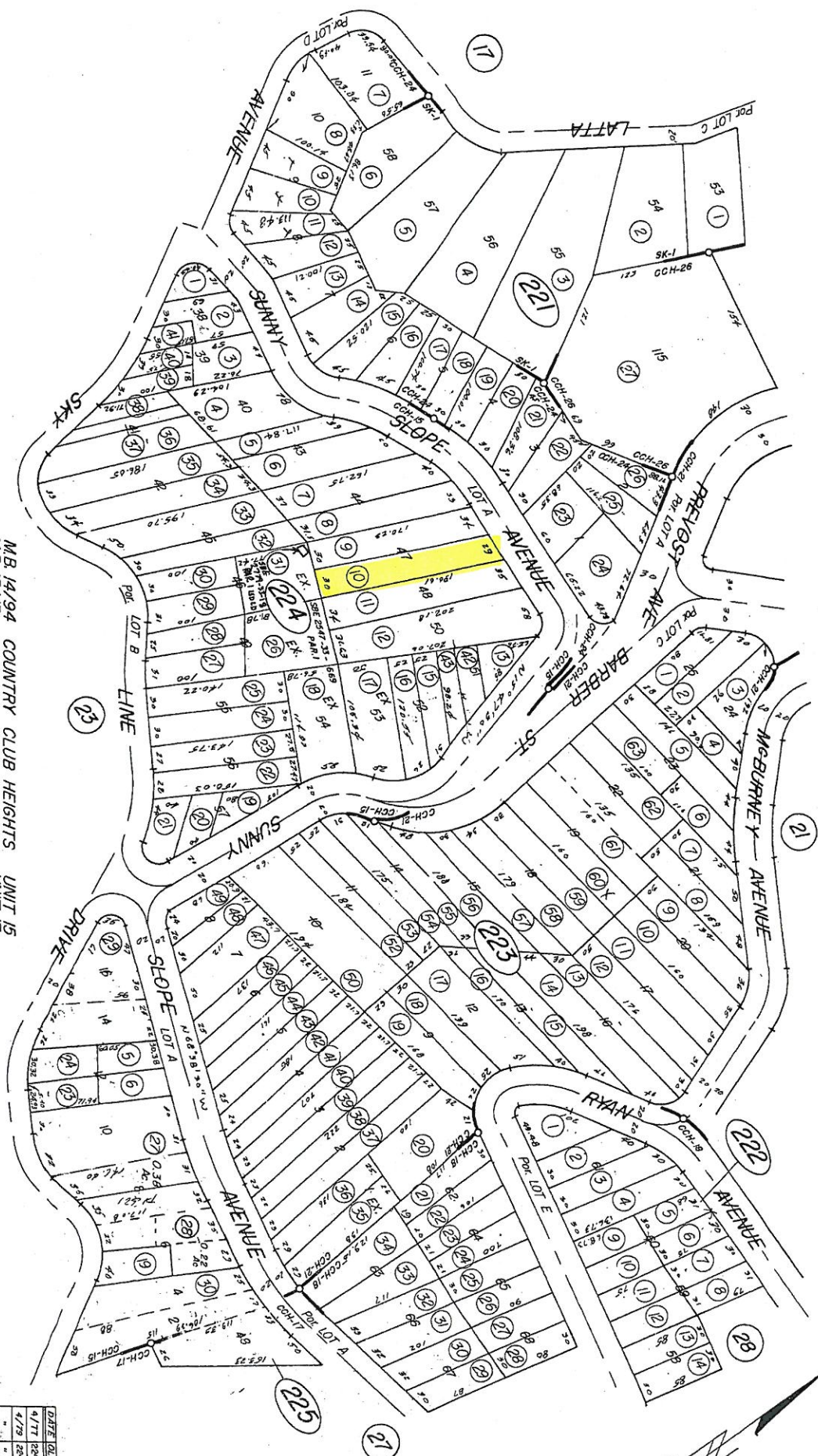
THIS MAP IS FOR
ASSESSMENT PURPOSES ONLY

POR. RO LA LAGUNA
(POR SEC 1 T6S R5W)

T.R. A. 505

18-28, 18-29-(1,3,4,5)

375-22



- MB. 14/94 COUNTRY CLUB HEIGHTS UNIT 15
- MB. 15/13 " " " " UNIT 17
- MB. 15/37 " " " " UNIT 18
- MB. 15/62 " " " " UNIT 24
- MB. 16/71 " " " " UNIT 24
- MB. 17/73-80 " " " " UNIT 26
- MB. 18/60-61 " SUNSET " " " " UNIT 1

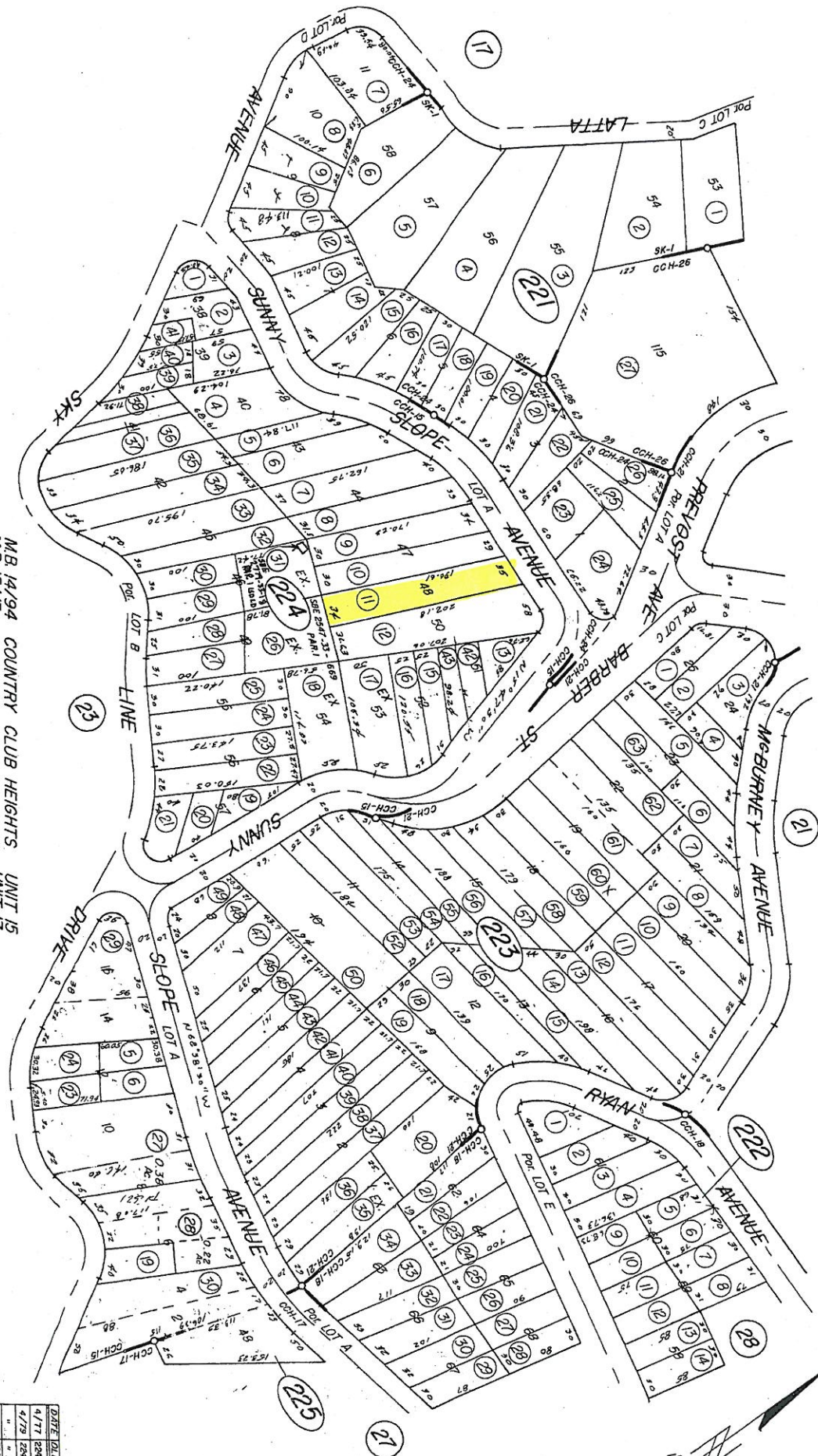
DATE	OLD NO.	NEW NO.
1/77	294-018	482-345
4/79	294-696	88
"	691	31
2/82	324	87
10/90	10-16-20	89
8/97	87-24	225-32
3/05	13-18	225-30

THIS MAP IS FOR
ASSESSMENT PURPOSES ONLY

POR. RO LA LAGUNA
(POR SEC 1 T6S R5W)

T. R. A. 505

18-28, 18-29-(1, 3, 4, 5)
375-22



ASSESSOR'S MAP BK. 375 PG. 22

- MB 14/94 COUNTRY CLUB HEIGHTS UNIT 15
- MB 15/13 " " " " UNIT 17
- MB 15/37 " " " " UNIT 18
- MB 15/62 " " " " UNIT 21
- MB 16/71 " " " " UNIT 24
- MB 17/79-80 " " " " UNIT 26
- MB 18/60-61 " SUNSET " KNOLLS " UNIT 1

DATE	OLD NO.	NEW NO.
4/77	284-014	48-53
4/79	284-635	58
"	631	57
2/87	225-24	27
10/90	10-15, 20	28
2-97	17-24	225-59
3/03	13-18	225-30

THIS MAP WAS PREPARED FOR ASSESSMENT PURPOSES ONLY. NO LIABILITY IS ASSUMED FOR THE ACCURACY OF THE DATA SHOWN. ASSESSOR'S PAREL MAY NOT COMPLY WITH LOCAL COI-SPLIT OR BUILDING SITE ORDINANCES.

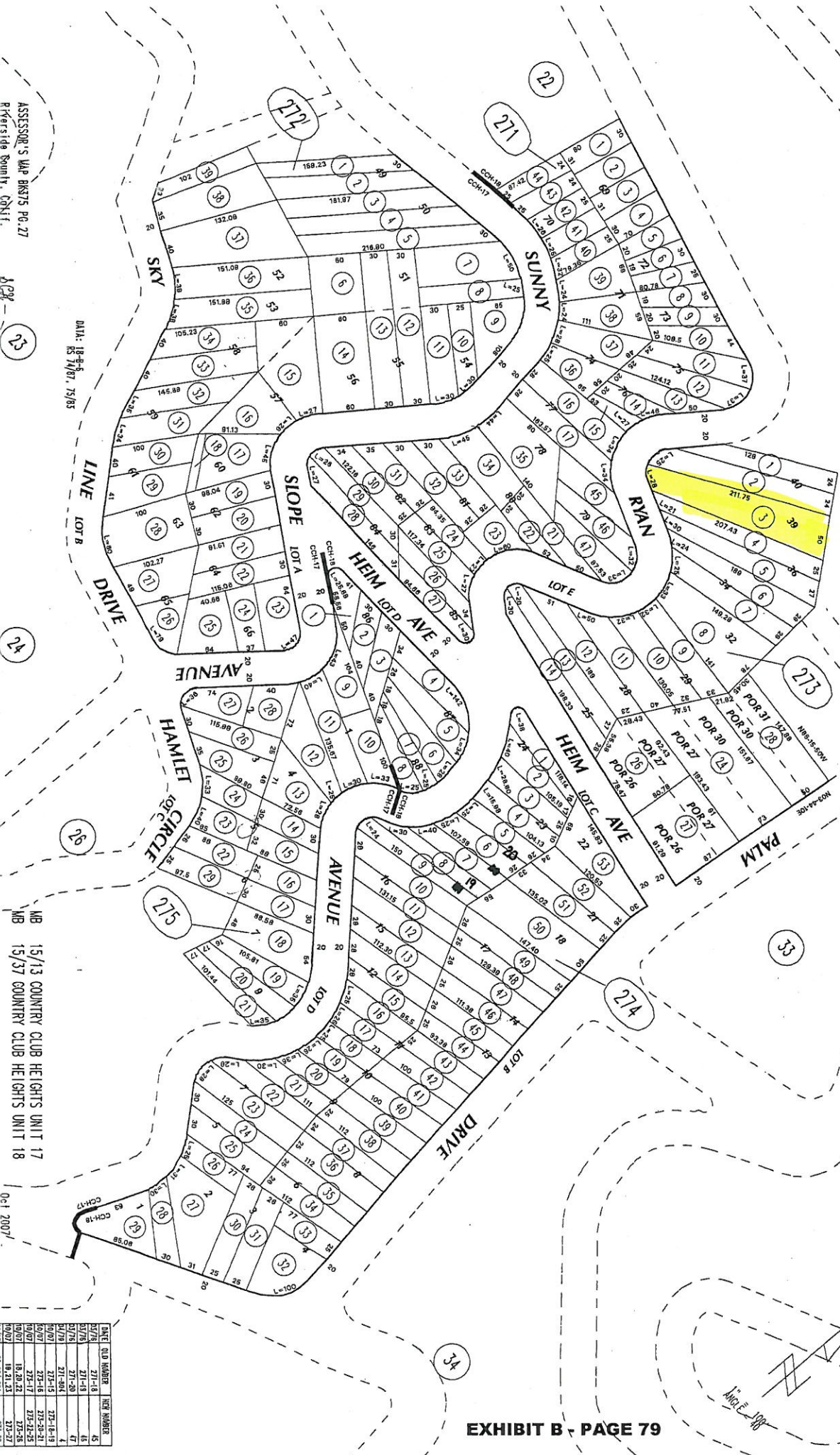
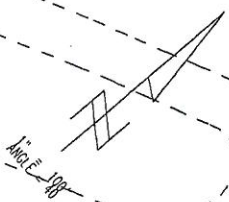
NOV 19 2007

POR, PROTRACTED SEC. 1, T. 6S., R. 5W
 POR, PROTRACTED SEC. 6, T. 6S., R. 4W
 CITY OF LAKE ELSHORE

T.R.A. 005-005

375-27

18-28
 18-29-1



ASSESSOR'S MAP BOOKS PG. 27
 Riverside County, Calif.

8/29/07

23

24

25

26

15/13 COUNTRY CLUB HEIGHTS UNIT 17
 15/37 COUNTRY CLUB HEIGHTS UNIT 18

06/1 2007

DATE	OLD NUMBER	NEW NUMBER
02/78	271-18	45
02/78	271-19	46
02/78	271-20	47
02/78	271-21	48
02/78	271-22	49
02/78	271-23	50
02/78	271-24	51
02/78	271-25	52
02/78	271-26	53
02/78	271-27	54
02/78	271-28	55
02/78	271-29	56
02/78	271-30	57
02/78	271-31	58
02/78	271-32	59
02/78	271-33	60
02/78	271-34	61
02/78	271-35	62
02/78	271-36	63
02/78	271-37	64
02/78	271-38	65
02/78	271-39	66
02/78	271-40	67
02/78	271-41	68
02/78	271-42	69
02/78	271-43	70
02/78	271-44	71
02/78	271-45	72
02/78	271-46	73
02/78	271-47	74
02/78	271-48	75
02/78	271-49	76
02/78	271-50	77
02/78	271-51	78
02/78	271-52	79
02/78	271-53	80
02/78	271-54	81
02/78	271-55	82
02/78	271-56	83
02/78	271-57	84
02/78	271-58	85
02/78	271-59	86
02/78	271-60	87
02/78	271-61	88
02/78	271-62	89
02/78	271-63	90
02/78	271-64	91
02/78	271-65	92
02/78	271-66	93
02/78	271-67	94
02/78	271-68	95
02/78	271-69	96
02/78	271-70	97
02/78	271-71	98
02/78	271-72	99
02/78	271-73	100

THIS MAP WAS PREPARED FOR ASSESSMENT PURPOSES ONLY. NO LIABILITY IS ASSUMED FOR THE ACCURACY OF THE DATA SHOWN. ASSESSOR'S PARCEL MAY NOT COMPLY WITH LOCAL LOT-SPLIT OR BUILDING SITE ORDINANCES.

FOR PROTRACTED SEC. 1 T. 6S., R. 5W
 FOR PROTRACTED SEC. 6 T. 6S., R. 4W
 CITY OF LAKE ELSINORE

T.R.A. 005-005

375-28
 18-29-1
 18-29-3

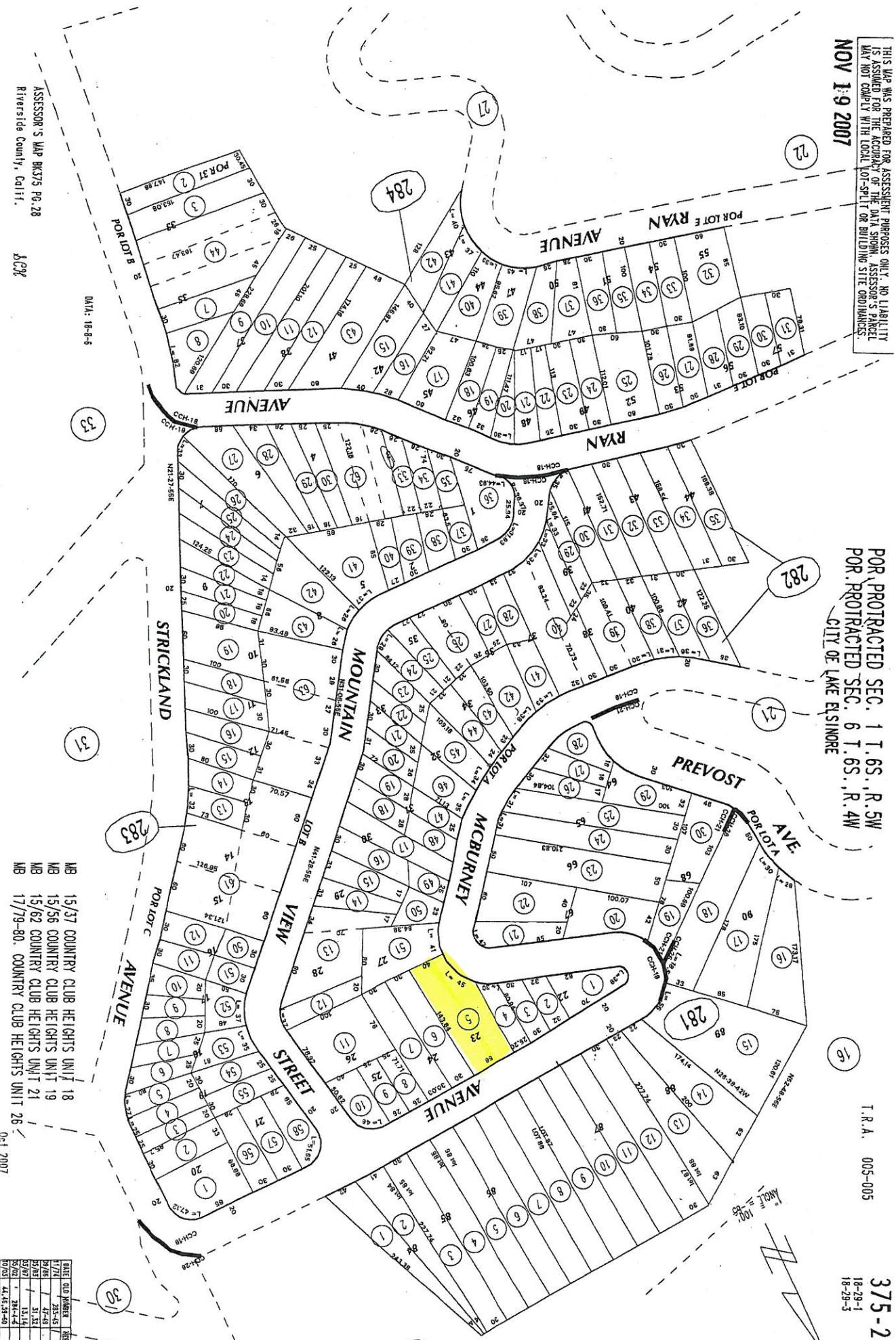
ASSESSOR'S MAP BK375 PG.28
 Riverside County, Calif.
 ACX

DATE: 18-9-6

- MB 15/37 COUNTRY CLUB HEIGHTS UNIT 18
- MB 15/56 COUNTRY CLUB HEIGHTS UNIT 19
- MB 15/62 COUNTRY CLUB HEIGHTS UNIT 21
- MB 17/79-80. COUNTRY CLUB HEIGHTS UNIT 26

DATE	OLD NUMBER	NEW NUMBER
1/7/71	235-57	58-60
2/2/82	47-48	235-51
5/2/82	51-52	235-52
5/2/82	15-16	234-43
5/2/82	234-44	44
0/0/01	44, 45, 58-59	235-53

0-1 2007



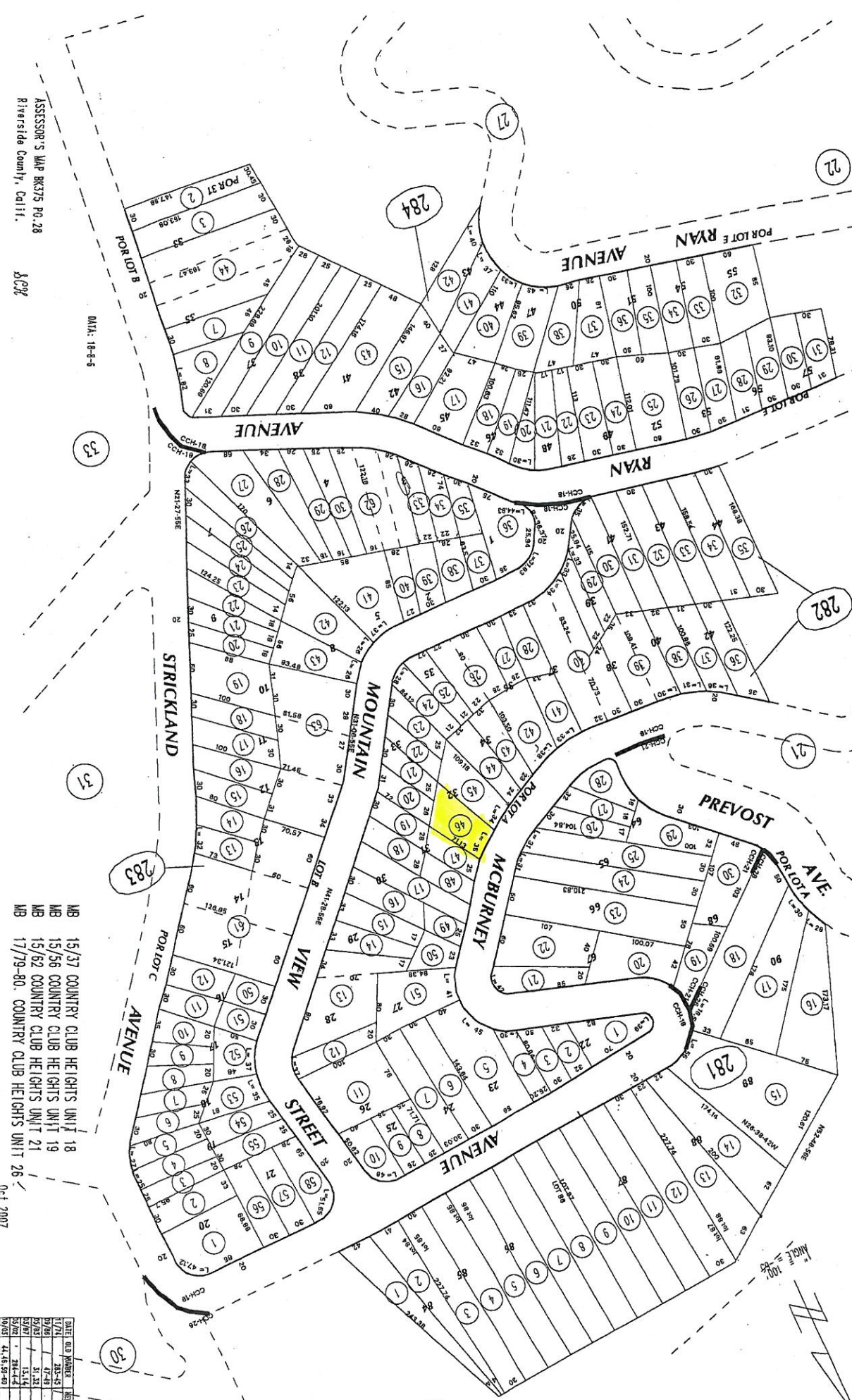
THIS MAP WAS PREPARED FOR ASSESSMENT PURPOSES ONLY. NO LIABILITY IS ASSUMED FOR THE ACCURACY OF THE DATA SHOWN. ASSESSOR'S PARCEL MAP NOT COMPLY WITH LOCAL LOT-SPLIT OR BUILDING SITE ORDINANCES.

NOV 19 2007

FOR PROTRACTED SEC. 1 T. 6S., R. 5W
 FOR PROTRACTED SEC. 6 T. 6S., R. 4W
 CITY OF LAKE ELSINORE

T.R.A. 005-005

375-28
 18-29-1
 18-29-3



ASSESSOR'S MAP BK375 PG.28
 Riverside County, Calif.
 BCR

- MB 15/37 COUNTRY CLUB HEIGHTS UNIT 18
- MB 15/56 COUNTRY CLUB HEIGHTS UNIT 19
- MB 15/62 COUNTRY CLUB HEIGHTS UNIT 21
- MB 17/79-80 COUNTRY CLUB HEIGHTS UNIT 26

DATE	CD	PARCEL	NEW PARCEL
1/7/71	333-5		333-5
5/7/86	47-8		233-51
5/2/87	31-32		233-52
5/7/87	15-16		234-53
5/7/87	234-4		44
9/1/87	44, 16, 59-60		233-53

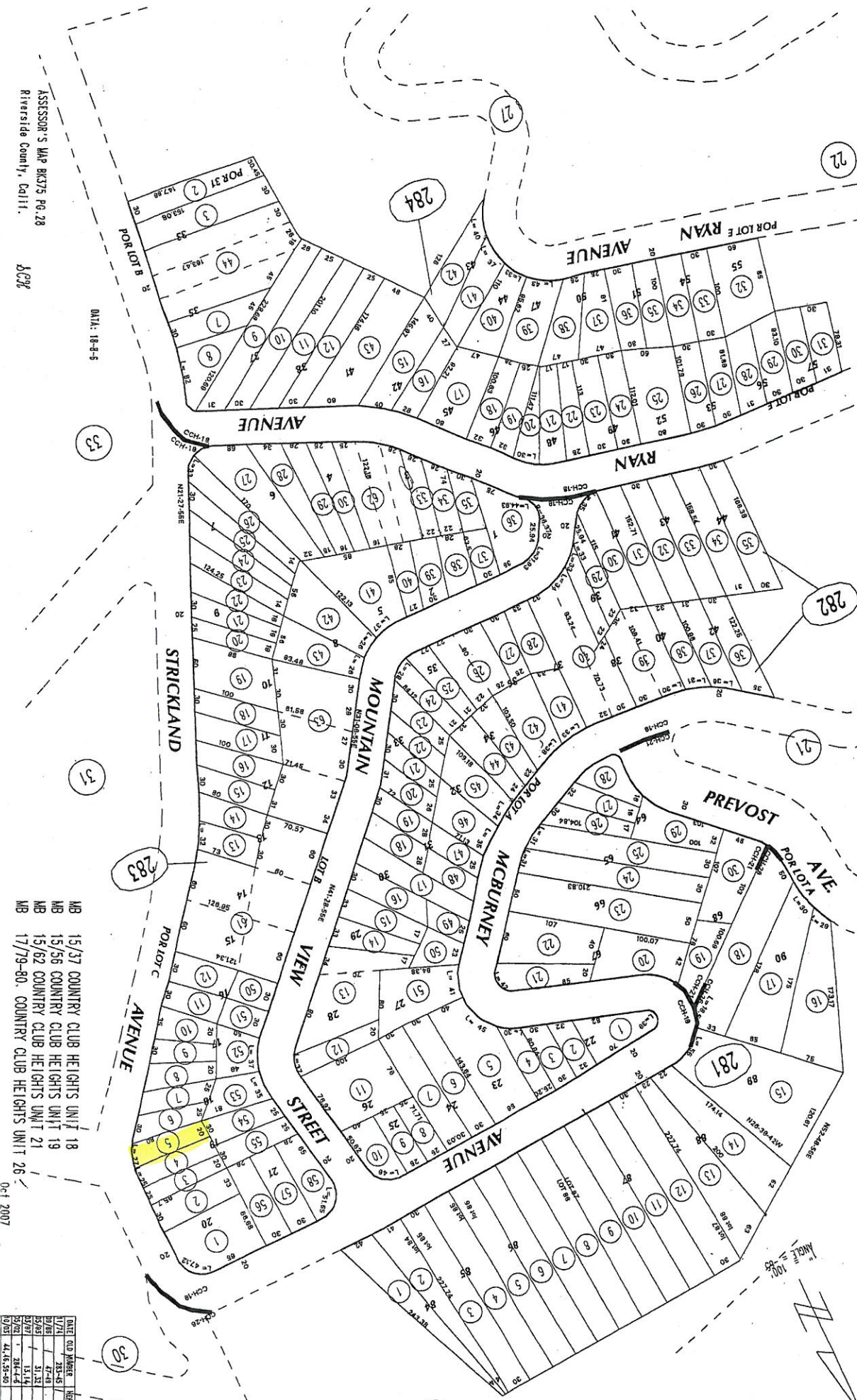
THIS MAP WAS PREPARED FOR ASSESSMENT PURPOSES ONLY. NO LIABILITY IS ASSURED FOR THE ACCURACY OF THE DATA SHOWN. ASSESSOR'S PARCEL MAP NOT COMPLY WITH LOCAL LOT-SPLIT OR BUILDING SITE ORDINANCES.

NOV 19 2007

POR, PROTRACTED SEC. 1 T. 6S., R. 5W
 POR, PROTRACTED SEC. 6 T. 6S., R. 4W
 CITY OF LAKE ELSINORE

T.R.A. 005-005

375-28
 18-29-1
 18-29-3



ASSESSOR'S MAP BK375 PG.28
 Riverside County, Calif.
 8/29/07

DATA: 18-8-6

- MB 15/37 COUNTRY CLUB HEIGHTS UNIT 18
- MB 15/56 COUNTRY CLUB HEIGHTS UNIT 19
- MB 15/62 COUNTRY CLUB HEIGHTS UNIT 21
- MB 17/79-80 COUNTRY CLUB HEIGHTS UNIT 26

DATE	OLD NUMBER	NEW NUMBER
1/7/71	233-6	39-03
9/28/87	47-48	233-61
5/2/89	51-52	233-62
5/2/89	13-14	234-43
5/2/89	234-44	41
9/2/89	44, 45, 50	233-63

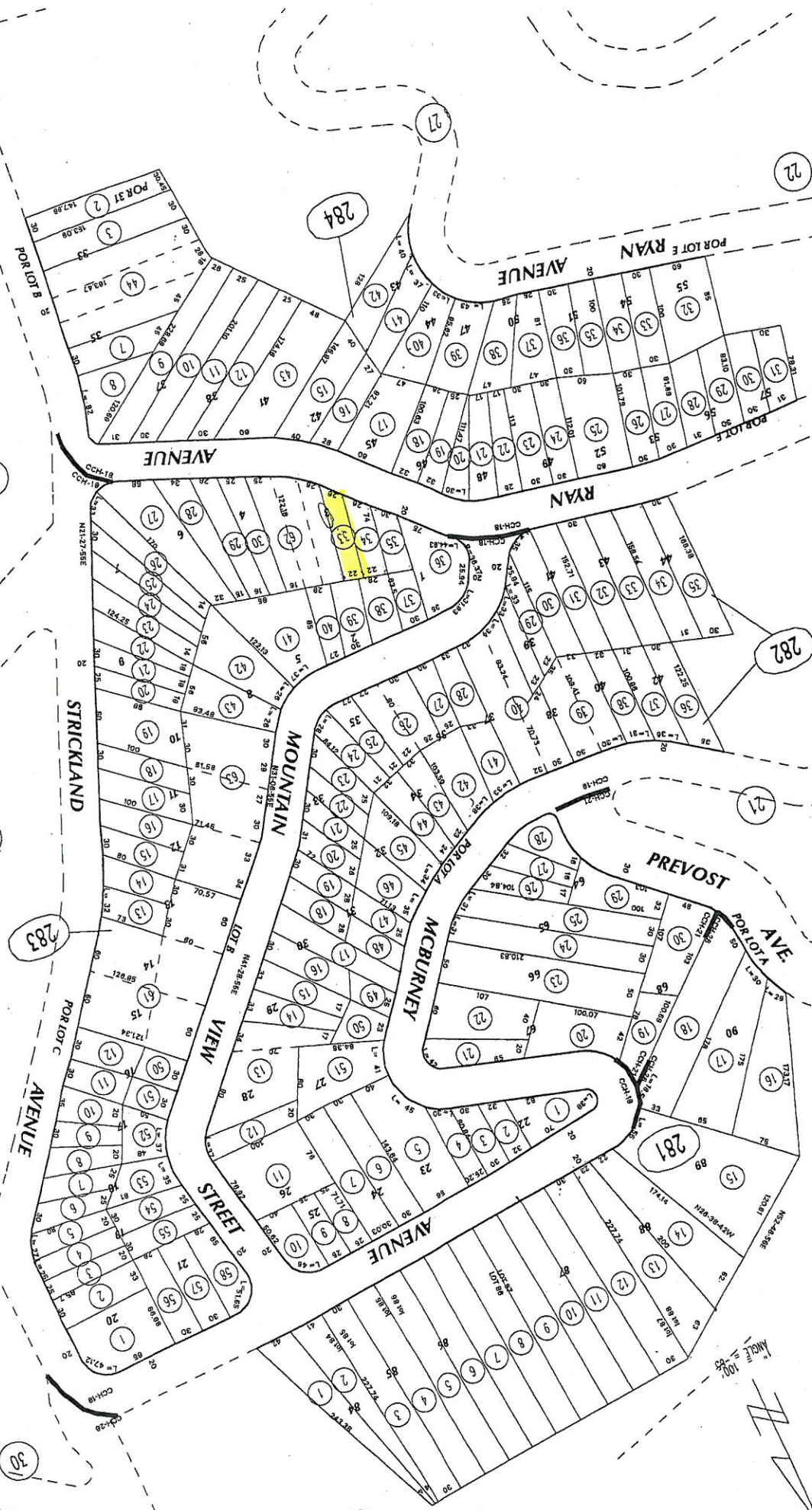
THIS MAP WAS PREPARED FOR ASSESSMENT PURPOSES ONLY. NO LIABILITY IS ASSUMED FOR THE ACCURACY OF THE DATA SHOWN. ASSESSOR'S PARCEL MAP NOT COMPLY WITH LOCAL LOT-SPLIT OR BUILDING SITE ORDINANCES.

NOV 1 9 2007

POR, PROTRACTED SEC. 1 T. 6S., R. 5W
 POR, PROTRACTED SEC. 6 T. 6S., R. 4W
 CITY OF LAKE ELSINORE

T.R.A. 005-005

375-28
 18-29-1
 18-29-3



ASSESSOR'S MAP BK375 PG.28
 Riverside County, Calif.
 DCP

DATE: 18-8-6

- MB 15/37 COUNTRY CLUB HEIGHTS UNIT 18
- MB 15/56 COUNTRY CLUB HEIGHTS UNIT 19
- MB 15/62 COUNTRY CLUB HEIGHTS UNIT 21
- MB 17/79-80. COUNTRY CLUB HEIGHTS UNIT 26

DATE	OLD NUMBER	NEW NUMBER
1/7/71	285-43	375-28
9/2/85	47-48	285-51
5/2/87	31-32	285-52
5/2/87	15, 16	284-43
9/2/87	384-4	41
9/2/87	44, 45, 53-60	285-43

THIS MAP WAS PREPARED FOR ASSESSMENT PURPOSES ONLY. NO LIABILITY IS ASSUMED FOR THE ACCURACY OF THE DATA SHOWN. ASSESSOR'S PARCEL MAP NOT COMPLY WITH LOCAL LOT-SPLIT OR BUILDING SITE ORDINANCES.

POR, PROTRACTED SEC. 1 T. 6S., R. 5W
 POR, PROTRACTED SEC. 6 T. 6S., R. 4W
 CITY OF LAKE ELSINORE

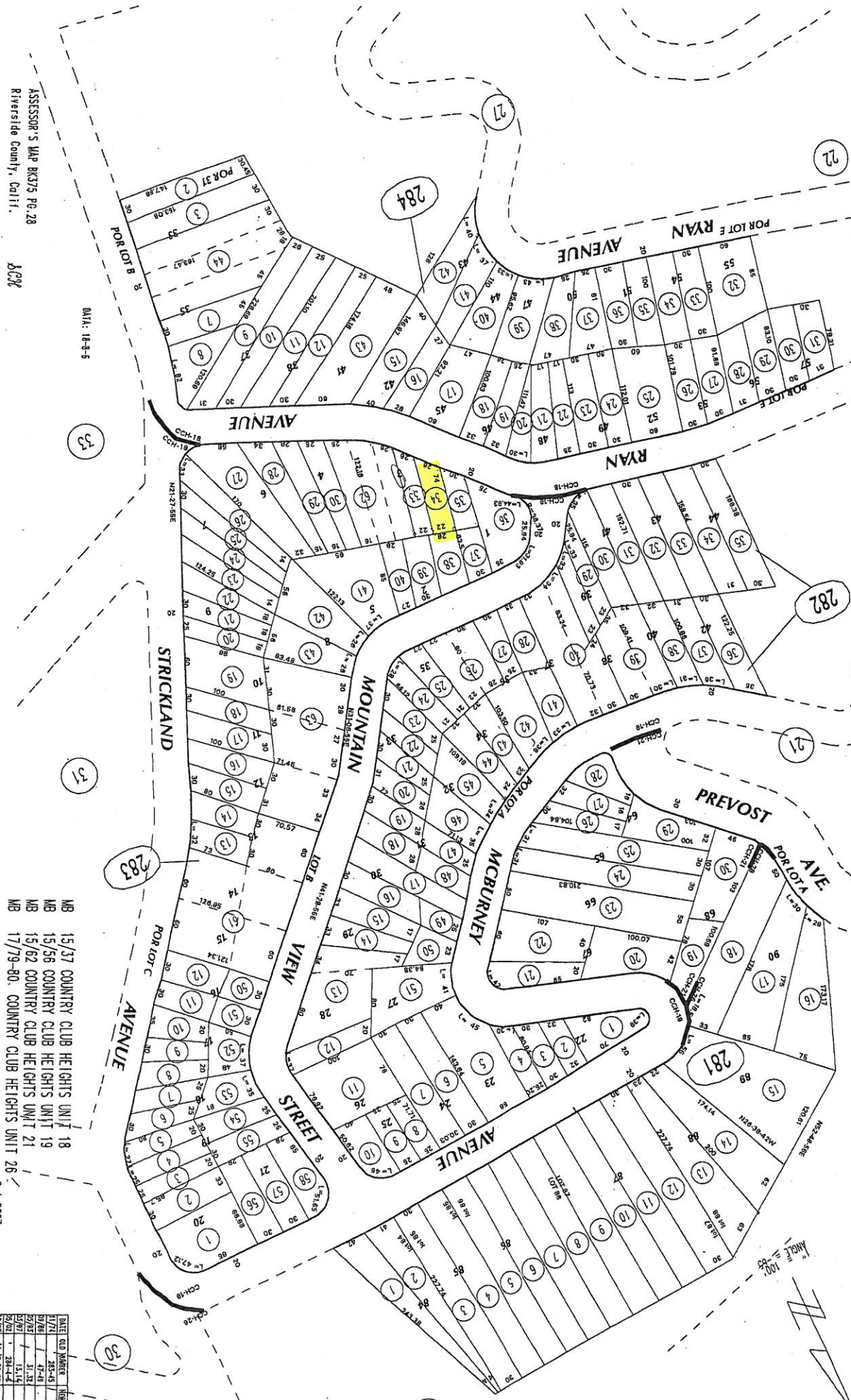
T.R.A. 005-005
 375-28
 18-29-1
 18-29-5

ASSESSOR'S MAP BK375 PG.28
 Riverside County, Calif.
 8/9/07

- MB 15/37 COUNTRY CLUB HEIGHTS UNIT 18
- MB 15/56 COUNTRY CLUB HEIGHTS UNIT 19
- MB 15/62 COUNTRY CLUB HEIGHTS UNIT 21
- MB 17/79-80. COUNTRY CLUB HEIGHTS UNIT 26

DATE	JOB NUMBER	FILE NUMBER
11/7/01	18-29-5	381-42
11/7/01	18-29-5	381-43
11/7/01	18-29-5	381-44
11/7/01	18-29-5	381-45
11/7/01	18-29-5	381-46
11/7/01	18-29-5	381-47
11/7/01	18-29-5	381-48
11/7/01	18-29-5	381-49
11/7/01	18-29-5	381-50
11/7/01	18-29-5	381-51

0-1 2007



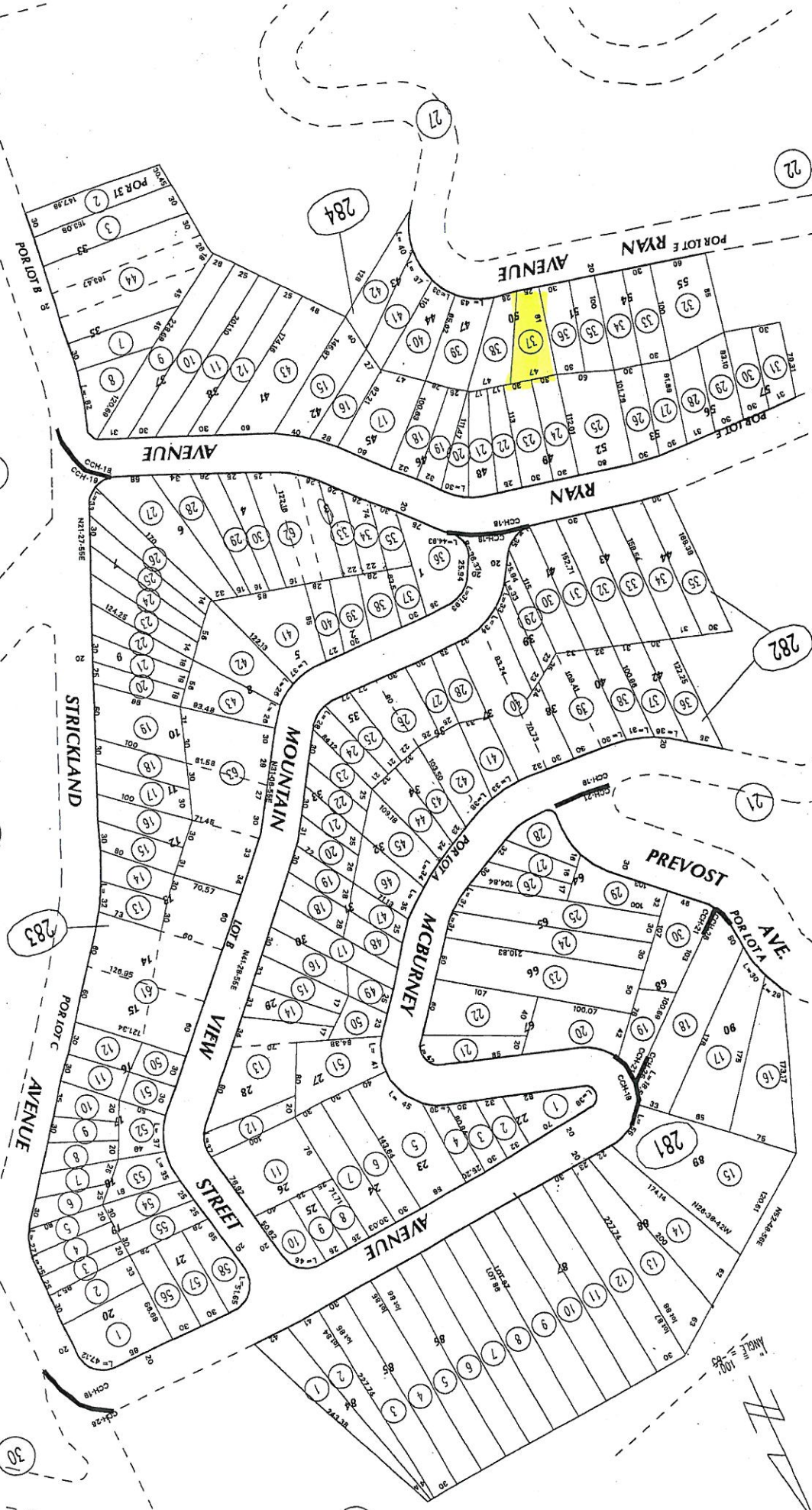
THIS MAP WAS PREPARED FOR ASSESSMENT PURPOSES ONLY. NO LIABILITY IS ASSUMED FOR THE ACCURACY OF THE DATA SHOWN. ASSESSOR'S PARCEL MAP NOT COMPLY WITH LOCAL LOT-SPLIT OR BUILDING SITE ORDINANCES.

NOV 19 2007

POR, PROTRACTED SEC. 1 T. 6S., R. 5W
 POR, PROTRACTED SEC. 6 T. 6S., R. 4W
 CITY OF LAKE ELSINORE

T. R. A. 005-005

375-28
 18-29-1
 18-29-3



ASSESSOR'S MAP B375 Pg. 28
 Riverside County, Calif.
 8/29/07

- MB 15/37 COUNTRY CLUB HEIGHTS UNIT 18
- MB 15/56 COUNTRY CLUB HEIGHTS UNIT 19
- MB 15/62 COUNTRY CLUB HEIGHTS UNIT 21
- MB 17/79-80. COUNTRY CLUB HEIGHTS UNIT 28

DATE	JOB NUMBER	REV NUMBER
11/19/07	15-37	1
11/19/07	15-56	1
11/19/07	15-62	1
11/19/07	17-79-80	1
11/19/07	15-37	2
11/19/07	15-56	2
11/19/07	15-62	2
11/19/07	17-79-80	2

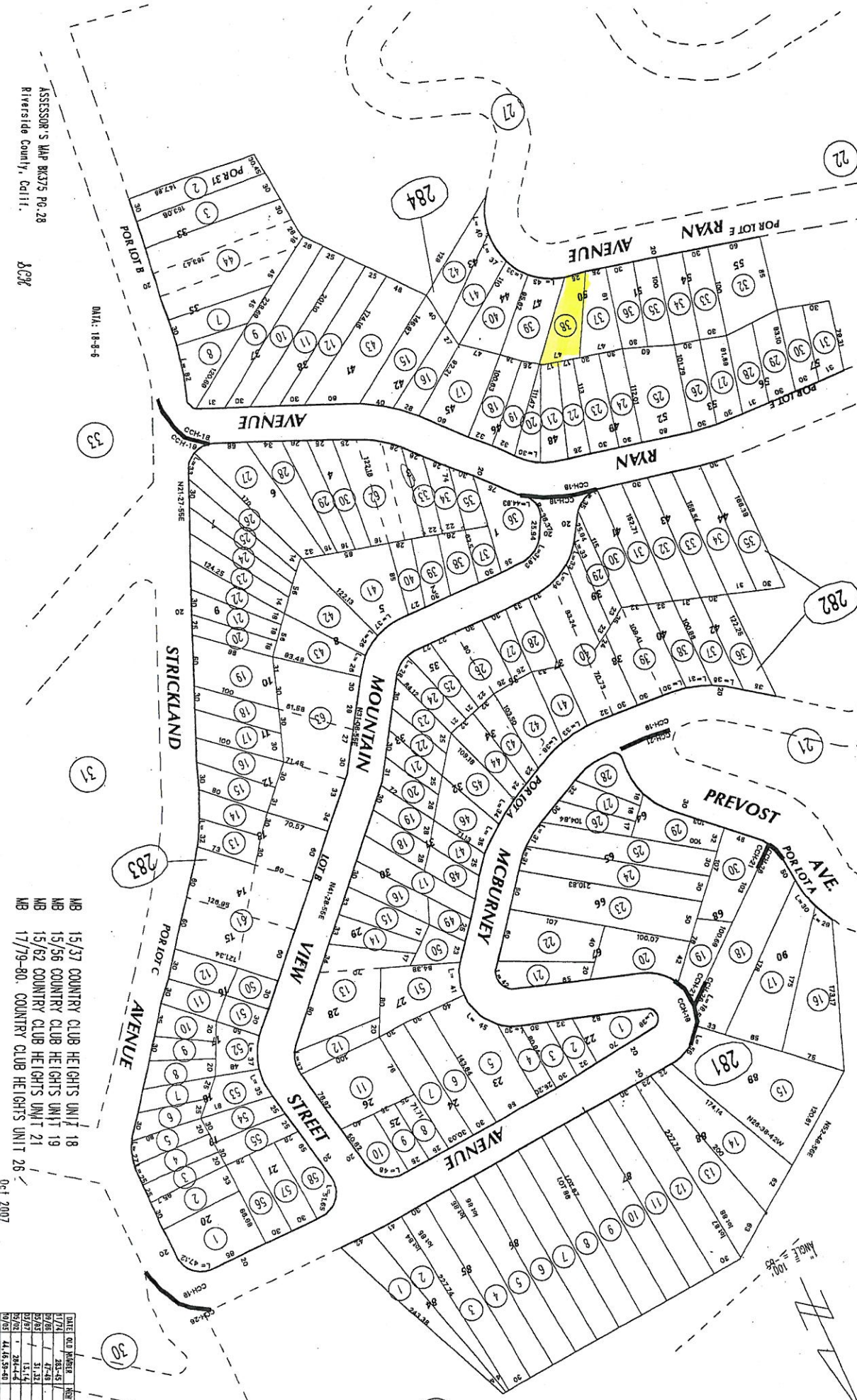
Oct 2007

THIS MAP WAS PREPARED FOR ASSESSMENT PURPOSES ONLY. NO LIABILITY IS ASSURED FOR THE ACCURACY OF THE DATA SHOWN. ASSESSOR'S PANEL MAY NOT CORRELATE WITH LOCAL LOT-SPLIT OR BUILDING SITE ORDINANCES.

POR, PROTRACTED SEC. 1 T. 6S., R. 5W
 POR, PROTRACTED SEC. 6 T. 6S., R. 4W
 CITY OF LAKE ELSINORE

T. R. A. 005-005

375-28
 18-29-1
 18-29-3



ASSESSOR'S MAP BR375 Pg. 28
 Riverside County, Calif.
 8/29/07

DATE: 18-8-6

- MB 15/37 COUNTRY CLUB HEIGHTS UNIT 18
- MB 15/56 COUNTRY CLUB HEIGHTS UNIT 19
- MB 15/62 COUNTRY CLUB HEIGHTS UNIT 21
- MB 17/79-80. COUNTRY CLUB HEIGHTS UNIT 26

Oct 2007

DATE	NO. NUMBER	FOR NUMBER
11/24	383-45	35-80
5/26	47-48	283-52
5/25	51-52	283-52
5/27	15-14	284-45
5/22	284-44	44
7/05	44, 16, 59-63	283-53

ASSESSMENT PURPOSES ONLY

AUG 03 2007

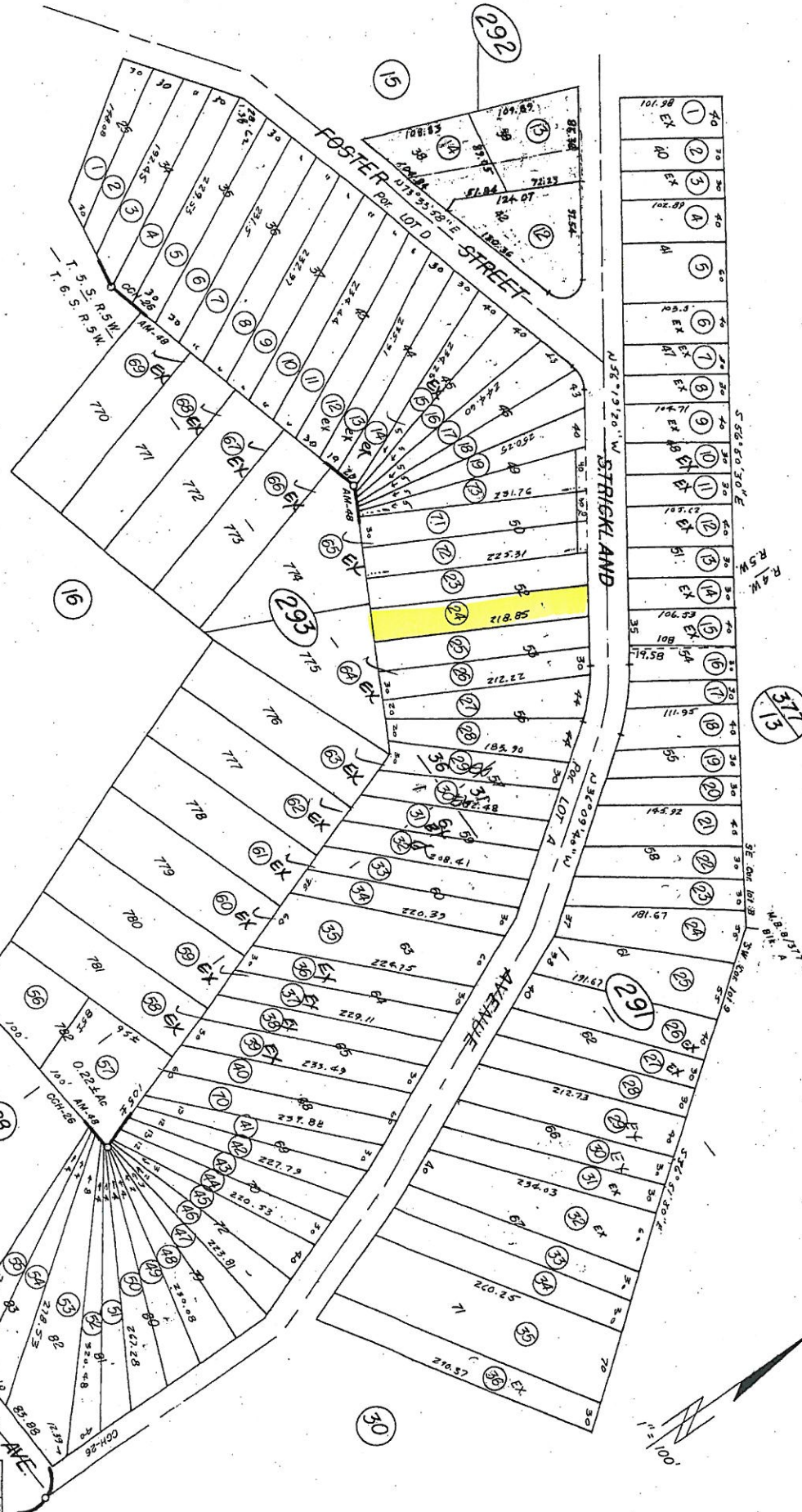
POR RO LA LAGUNA
POR SEC 36T6S R5W, POR SEC 1T6S, R5W
POR SEC 6T6S R4W

TR. A 505
519

10-CV-3
375-29

ASSESSOR'S MAP BK. 375 PG. 29
RIVERSIDE COUNTY, CALIF.

DATA: 10-8-8



MB 1779-80 COUNTRY CLUB HEIGHTS UNIT 26
ASSESSOR'S MAP 48

DATE	OLD No.	NEW No.
4/79	293, 21	71, 57
"	293, 22	72, 57
4/79	291, 836	36
11/91	292, 4	5, 6
2-08	5, 6	292-7
7/07	292, 3	292-8, 9
"	292-7	292-10, 11
7/07	292-10, 11	292-12
"	292-12	292-14

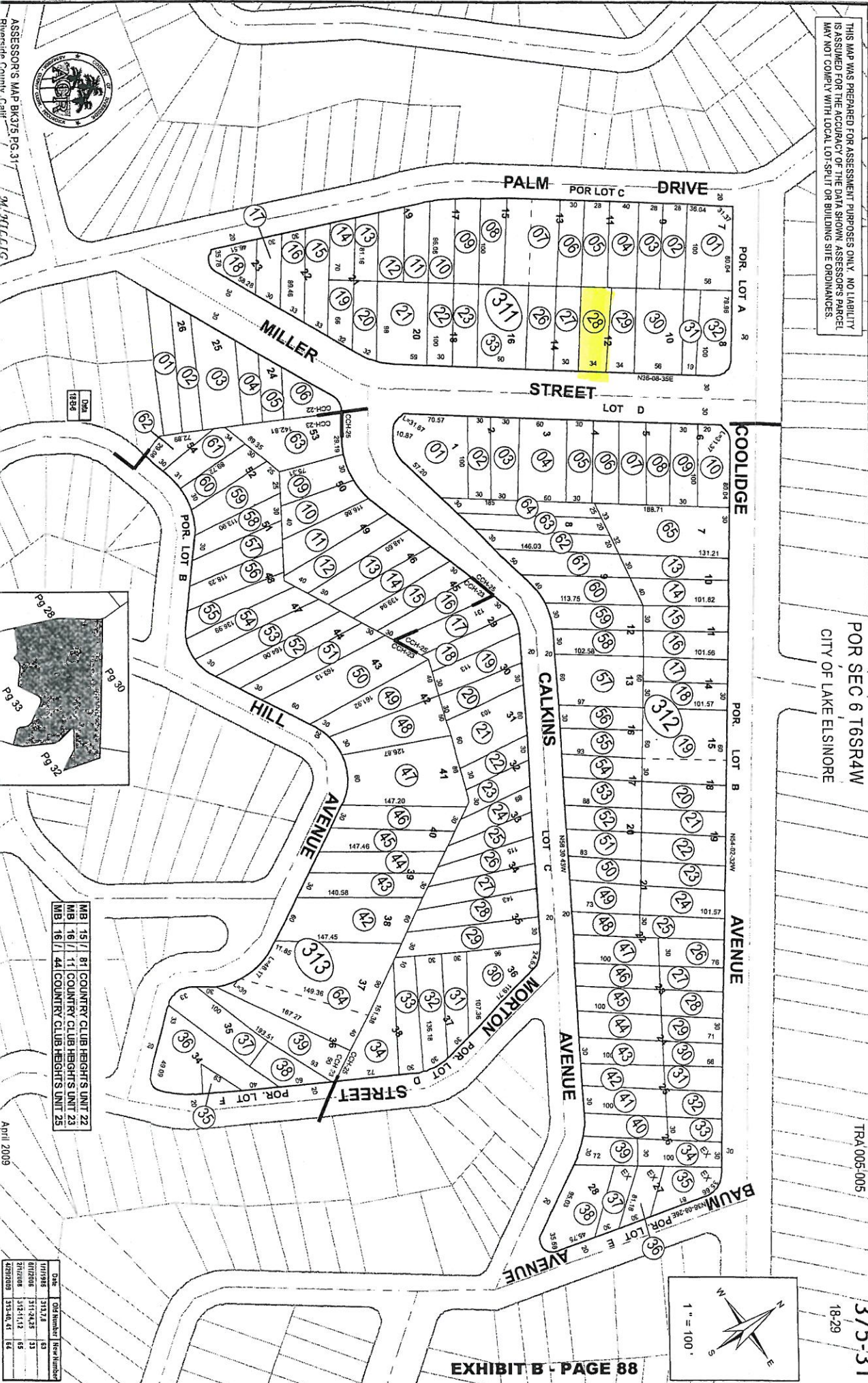
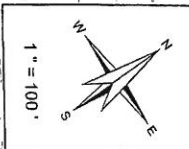
THIS MAP WAS PREPARED FOR ASSESSMENT PURPOSES ONLY. NO LIABILITY IS ASSURED FOR THE ACCURACY OF THE DATA SHOWN. ASSESSOR'S PARCEL MAP MAY NOT COMPLY WITH LOCAL LOT-SPLIT OR BUILDING SITE ORDINANCES.

POR SEC 6 T6SR4W
CITY OF LAKE ELSINORE

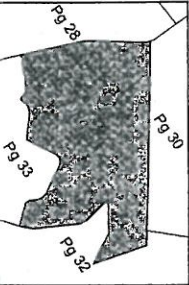
TRA 005-005

375-31
18-29

EXHIBIT B - PAGE 88



ASSESSOR'S MAP BK375 PG.31
9/19/11/11/11



MB 15 / 81 COUNTRY CLUB HEIGHTS UNIT 22
MB 16 / 11 COUNTRY CLUB HEIGHTS UNIT 23
MB 16 / 44 COUNTRY CLUB HEIGHTS UNIT 25

Date	Old Number	New Number
11/19/88	312.1	31
01/27/88	312.2	32
01/27/88	312.3	33
01/27/88	312.4	34
01/27/88	312.5	35
01/27/88	312.6	36
01/27/88	312.7	37
01/27/88	312.8	38
01/27/88	312.9	39
01/27/88	312.10	40
01/27/88	312.11	41
01/27/88	312.12	42
01/27/88	312.13	43
01/27/88	312.14	44
01/27/88	312.15	45
01/27/88	312.16	46
01/27/88	312.17	47
01/27/88	312.18	48
01/27/88	312.19	49
01/27/88	312.20	50
01/27/88	312.21	51
01/27/88	312.22	52
01/27/88	312.23	53
01/27/88	312.24	54
01/27/88	312.25	55
01/27/88	312.26	56
01/27/88	312.27	57
01/27/88	312.28	58
01/27/88	312.29	59
01/27/88	312.30	60
01/27/88	312.31	61
01/27/88	312.32	62
01/27/88	312.33	63
01/27/88	312.34	64
01/27/88	312.35	65
01/27/88	312.36	66
01/27/88	312.37	67
01/27/88	312.38	68
01/27/88	312.39	69
01/27/88	312.40	70
01/27/88	312.41	71
01/27/88	312.42	72
01/27/88	312.43	73
01/27/88	312.44	74
01/27/88	312.45	75
01/27/88	312.46	76
01/27/88	312.47	77
01/27/88	312.48	78
01/27/88	312.49	79
01/27/88	312.50	80
01/27/88	312.51	81
01/27/88	312.52	82
01/27/88	312.53	83
01/27/88	312.54	84
01/27/88	312.55	85
01/27/88	312.56	86
01/27/88	312.57	87
01/27/88	312.58	88
01/27/88	312.59	89
01/27/88	312.60	90
01/27/88	312.61	91
01/27/88	312.62	92
01/27/88	312.63	93
01/27/88	312.64	94
01/27/88	312.65	95
01/27/88	312.66	96
01/27/88	312.67	97
01/27/88	312.68	98
01/27/88	312.69	99
01/27/88	312.70	100

THIS MAP WAS PREPARED FOR ASSESSMENT PURPOSES ONLY. NO LIABILITY IS ASSURED FOR THE ACCURACY OF THE DATA SHOWN. ASSESSOR'S PARCEL MAY NOT COMPLY WITH LOCAL LOT SPLIT OR BUILDING SITE ORDINANCES.

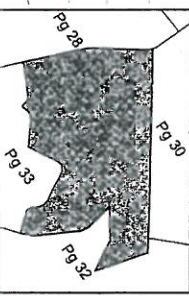
POR SEC 6 T6SR4W
CITY OF LAKE ELSINORE

TRA 005-005

375-31
18-29



ASSESSOR'S MAP B375 PG. 31
Riverside County, Calif.

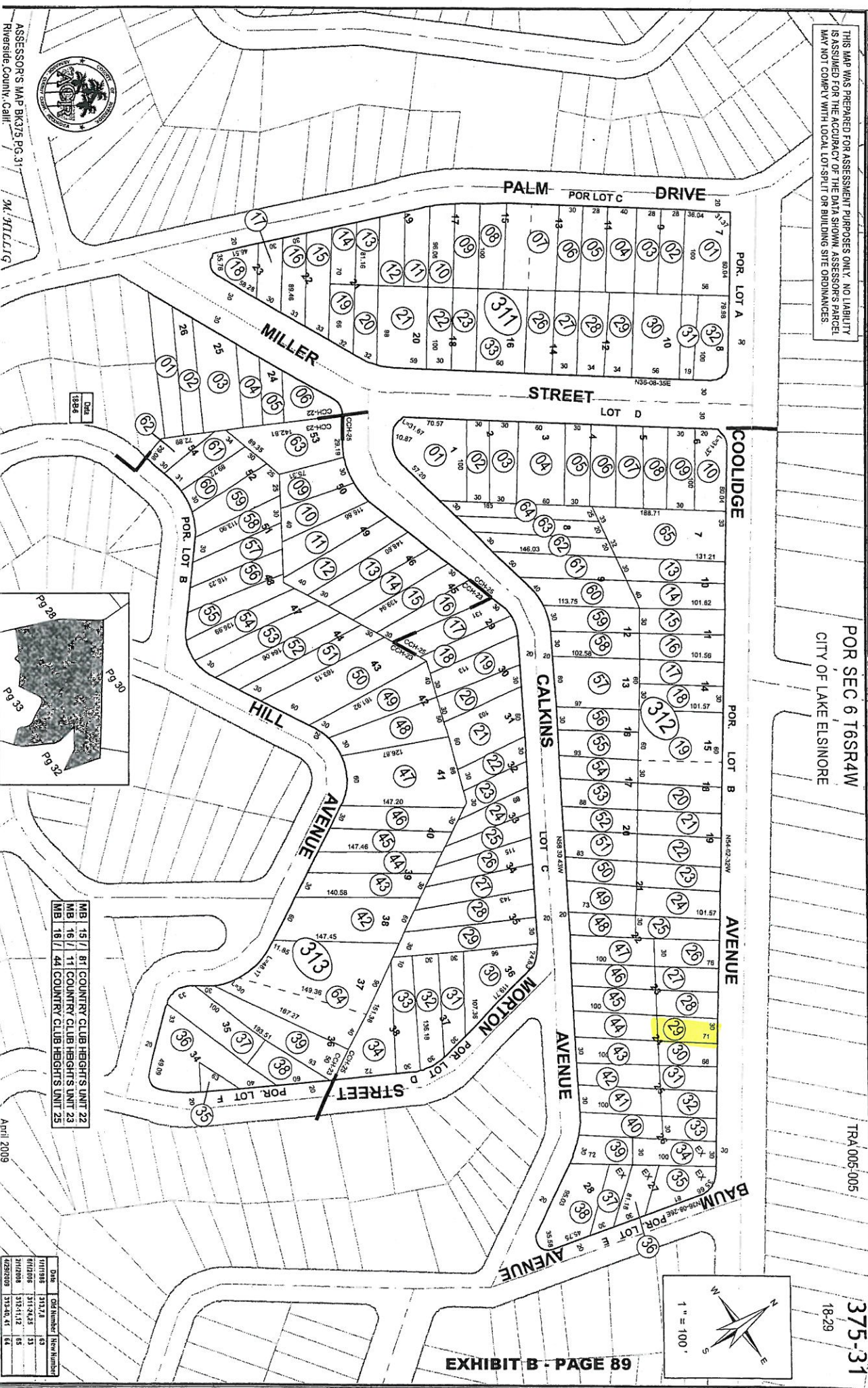
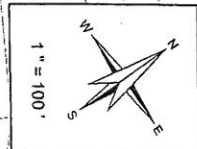


MB 15 /	81	COUNTRY CLUB HEIGHTS UNIT 22
MB 16 /	11	COUNTRY CLUB HEIGHTS UNIT 23
MB 18 /	44	COUNTRY CLUB HEIGHTS UNIT 25

Date	CG Number	Area Number
1/17/08	375-31-2	13
6/10/08	375-31-2-3	13
2/10/08	375-31-12	15
4/29/09	375-30-51	14

April 2009

EXHIBIT B - PAGE 89



THIS MAP WAS PREPARED FOR ASSESSMENT PURPOSES ONLY. NO LIABILITY IS ASSURED FOR THE ACCURACY OF THE DATA SHOWN. ASSESSOR'S PARCEL MAY NOT COMPLY WITH LOCAL LOT-SPLIT OR BUILDING SITE ORDINANCES.

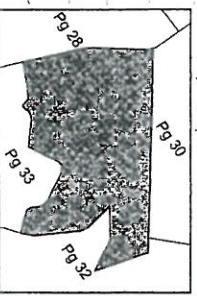
POR SEC 6 T6SR4W
CITY OF LAKE ELSINORE

TRA 005-005

375-31
18-29



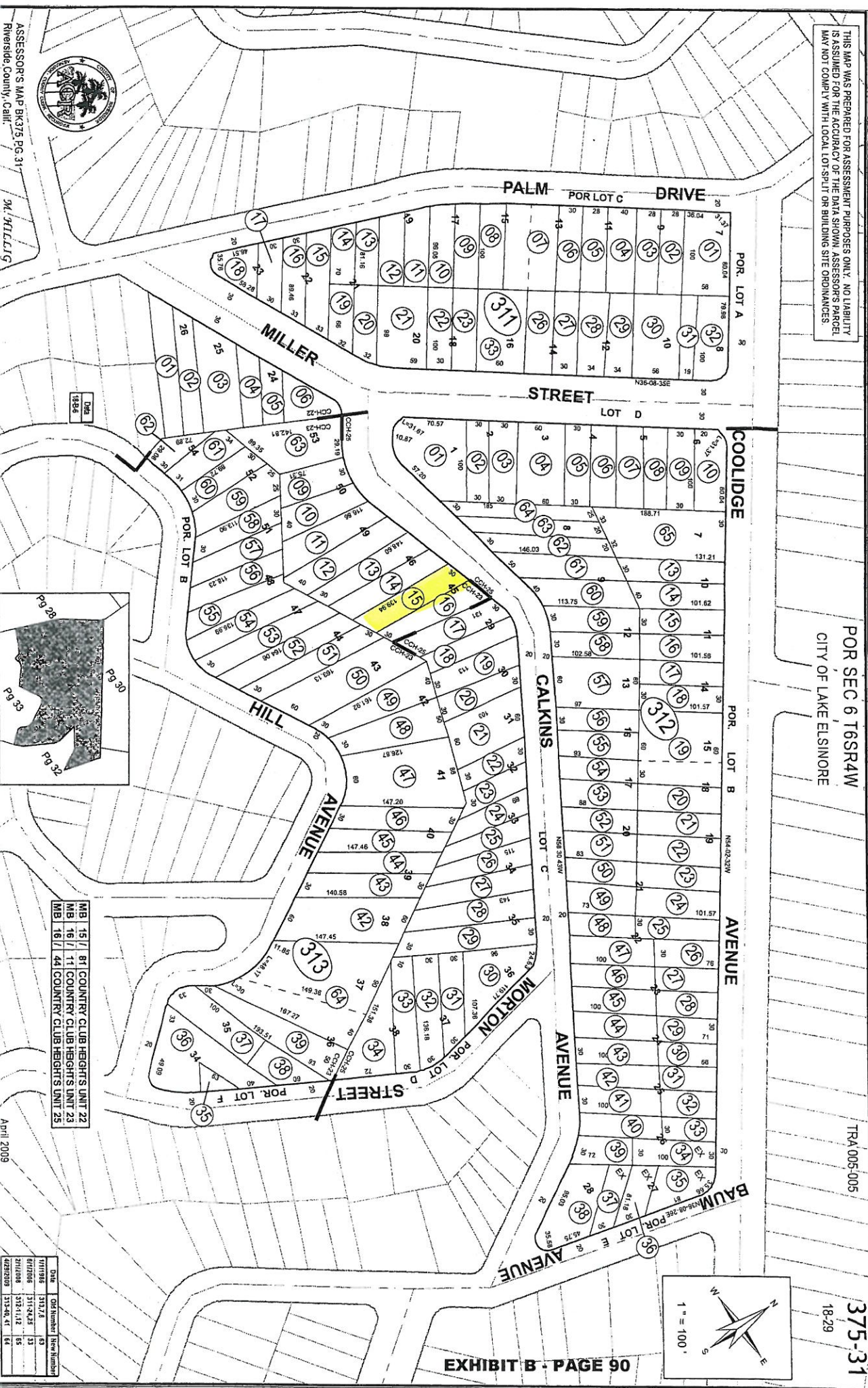
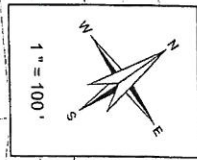
ASSESSOR'S MAP BK375 PG 317
MILLIG



MB 15 /	81	COUNTRY CLUB HEIGHTS UNIT 22
MB 16 /	11	COUNTRY CLUB HEIGHTS UNIT 23
MB 16 /	44	COUNTRY CLUB HEIGHTS UNIT 25

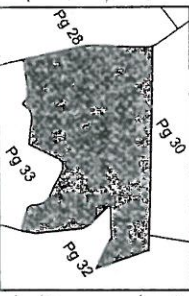
Date	CG Number	Area Number
1/17/08	375/2	43
6/17/08	375/243	13
2/14/08	375/112	55
4/29/09	375-005	64

EXHIBIT B - PAGE 90



THIS MAP WAS PREPARED FOR ASSESSMENT PURPOSES ONLY. NO LIABILITY IS ASSUMED FOR THE ACCURACY OF THE DATA SHOWN. ASSESSOR'S PARCEL MAP MAY NOT COMPLY WITH LOCAL LOT-SPLIT OR BUILDING SITE ORDINANCES.

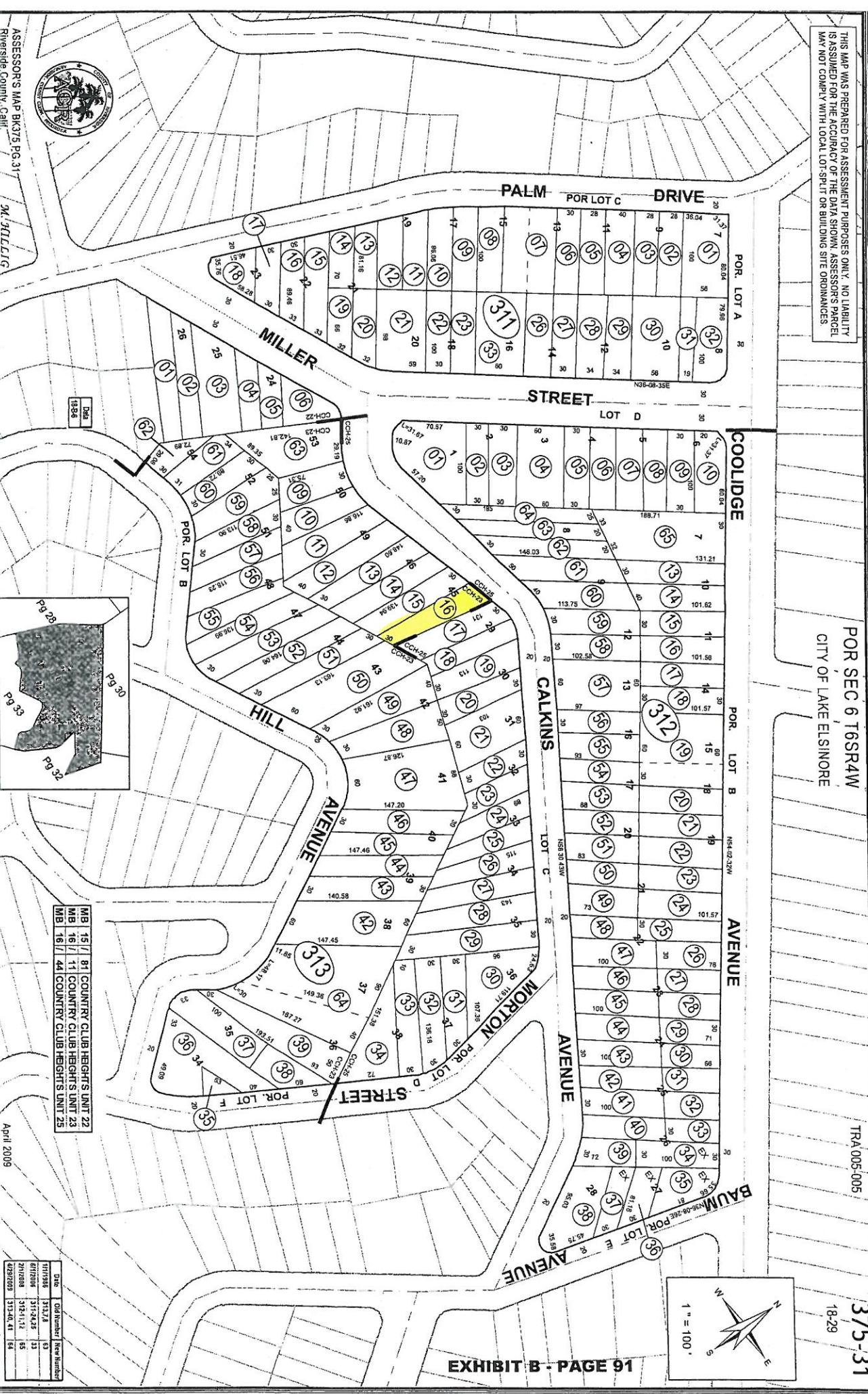
ASSESSOR'S MAP BK375 PG. 31
 Riverside County, Calif.



MB 15 / 81 COUNTRY CLUB HEIGHTS UNIT 22
 MB 16 / 11 COUNTRY CLUB HEIGHTS UNIT 23
 MB 16 / 44 COUNTRY CLUB HEIGHTS UNIT 25

Date	Old Number	New Number
01/08	3112	33
01/08	3112-23	33
01/08	3121-11	35
01/08	3124-41	34

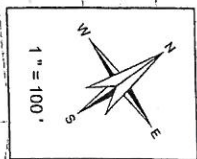
April 2009



POR SEC 6 T6SR4W
 CITY OF LAKE ELISNORE

TRA 005-005

375-31
 18-29



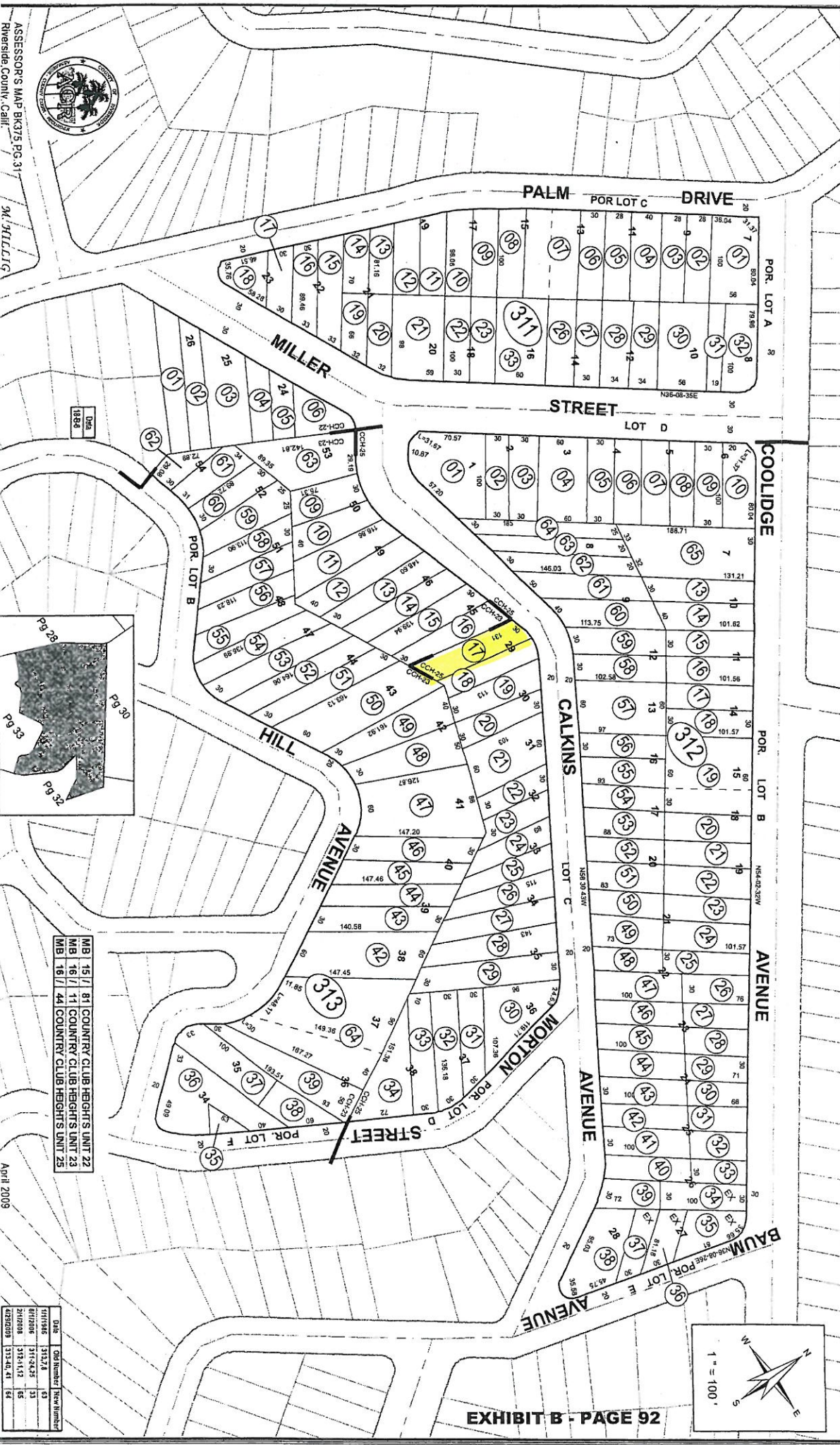
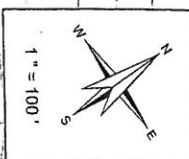
THIS MAP WAS PREPARED FOR ASSESSMENT PURPOSES ONLY. NO LIABILITY IS ASSUMED FOR THE ACCURACY OF THE DATA SHOWN. ASSESSOR'S PARCEL MAY NOT CORRELATE WITH LOCAL LOT-SPLIT OR BUILDING SITE ORDINANCES.

POR SEC 6 T6SR4W
CITY OF LAKE ELSDORE

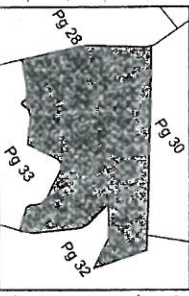
TRA 005-005

375-31
18-29

EXHIBIT B - PAGE 92



ASSESSOR'S MAP BK375 PG. 31
Riverside County, Calif.



MB 15 / 81 COUNTRY CLUB HEIGHTS UNIT 22
MB 16 / 11 COUNTRY CLUB HEIGHTS UNIT 23
MB 16 / 44 COUNTRY CLUB HEIGHTS UNIT 25

April 2009

Date	Old Number	New Number
11/19/08	317-21	31
01/02/08	317-24-3	32
2/10/08	317-1-12	35
02/28/09	317-40, 41	34

THIS MAP WAS PREPARED FOR ASSESSMENT PURPOSES ONLY. NO LIABILITY IS ASSURED FOR THE ACCURACY OF THE DATA SHOWN. ASSESSOR'S PARCEL MAP MAY NOT COMPLY WITH LOCAL LOT-SPLIT OR BUILDING SITE ORDINANCES.

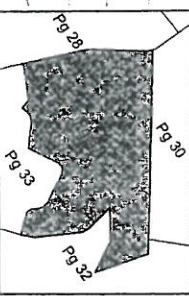
POR SEC 6 T6SR4W
CITY OF LAKE ELSINORE

TRA 005-005

375-31
18-29



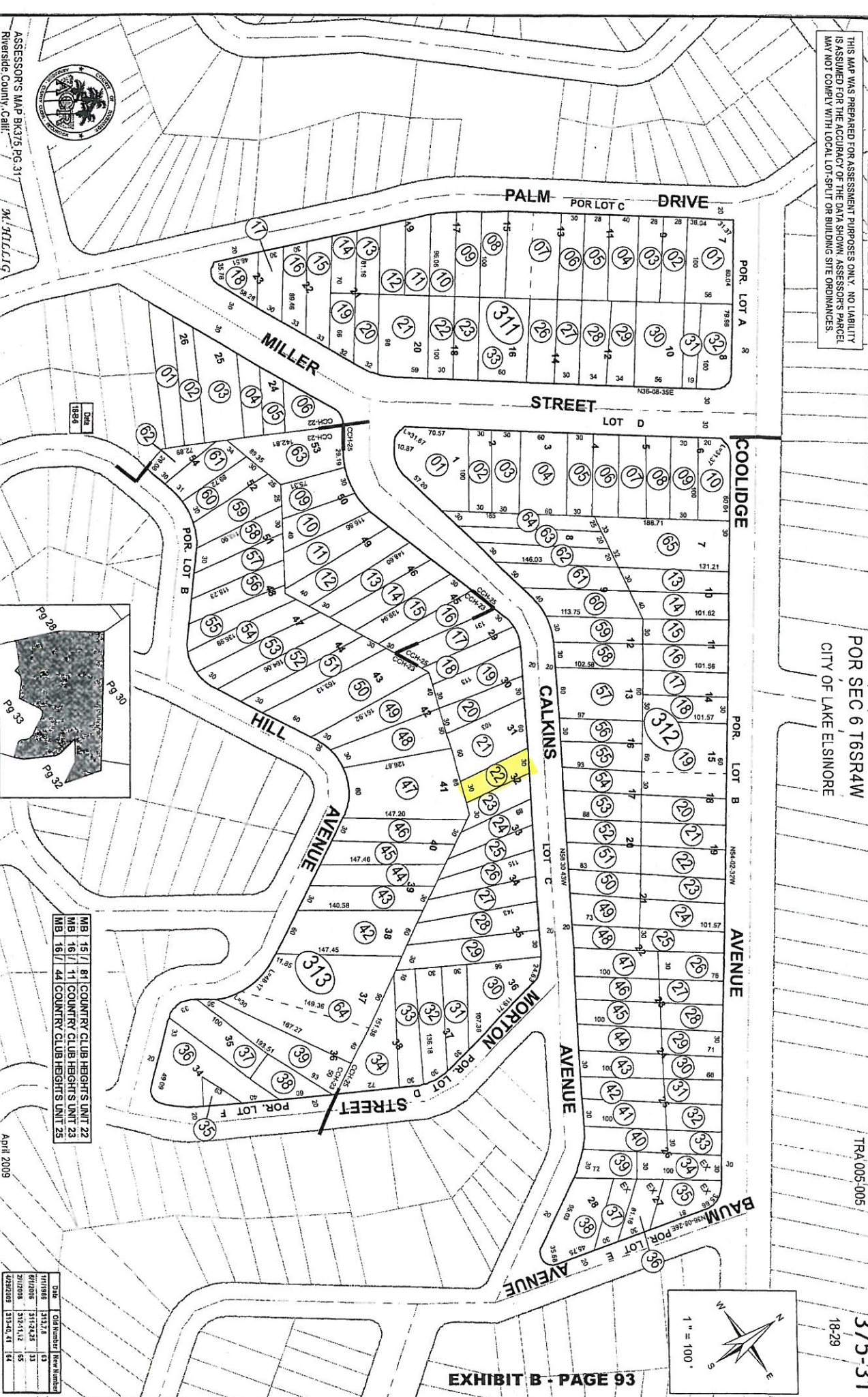
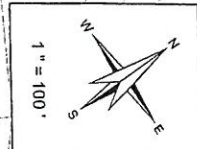
ASSESSOR'S MAP BK375 PG 317
Riverside County, Calif.



MB 15 // 81 COUNTRY CLUB HEIGHTS UNIT 22
MB 16 // 11 COUNTRY CLUB HEIGHTS UNIT 23
MB 16 // 44 COUNTRY CLUB HEIGHTS UNIT 25

Date	Old Number	New Number
11/17/08	313.1	31
01/20/09	313.2	32
01/20/09	313.11	33
01/20/09	313.12	34
01/20/09	313.13	35
01/20/09	313.14	36
01/20/09	313.15	37
01/20/09	313.16	38
01/20/09	313.17	39
01/20/09	313.18	40
01/20/09	313.19	41
01/20/09	313.20	42
01/20/09	313.21	43
01/20/09	313.22	44
01/20/09	313.23	45
01/20/09	313.24	46
01/20/09	313.25	47
01/20/09	313.26	48
01/20/09	313.27	49
01/20/09	313.28	50
01/20/09	313.29	51
01/20/09	313.30	52
01/20/09	313.31	53
01/20/09	313.32	54
01/20/09	313.33	55
01/20/09	313.34	56
01/20/09	313.35	57
01/20/09	313.36	58
01/20/09	313.37	59
01/20/09	313.38	60
01/20/09	313.39	61
01/20/09	313.40	62
01/20/09	313.41	63
01/20/09	313.42	64
01/20/09	313.43	65
01/20/09	313.44	66
01/20/09	313.45	67
01/20/09	313.46	68
01/20/09	313.47	69
01/20/09	313.48	70
01/20/09	313.49	71
01/20/09	313.50	72
01/20/09	313.51	73
01/20/09	313.52	74
01/20/09	313.53	75
01/20/09	313.54	76
01/20/09	313.55	77
01/20/09	313.56	78
01/20/09	313.57	79
01/20/09	313.58	80
01/20/09	313.59	81
01/20/09	313.60	82
01/20/09	313.61	83
01/20/09	313.62	84
01/20/09	313.63	85
01/20/09	313.64	86
01/20/09	313.65	87
01/20/09	313.66	88
01/20/09	313.67	89
01/20/09	313.68	90
01/20/09	313.69	91
01/20/09	313.70	92
01/20/09	313.71	93
01/20/09	313.72	94
01/20/09	313.73	95
01/20/09	313.74	96
01/20/09	313.75	97
01/20/09	313.76	98
01/20/09	313.77	99
01/20/09	313.78	100

EXHIBIT B - PAGE 93



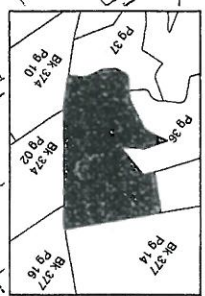
THIS MAP WAS PREPARED FOR ASSESSMENT PURPOSES ONLY. NO LIABILITY IS ASSUMED FOR THE ACCURACY OF THE DATA SHOWN. ASSESSOR'S PARCEL MAY NOT COMPLY WITH LOCAL LOT, SPLIT OR BUILDING SITE ORDINANCES.

ASSESSOR'S MAP BK. 375 PG. 32
 RiverSide County, Calif.



Data
 FSS 77115

C. Nguyen



Map Reference *

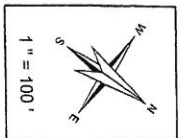
MB 16/44	COUNTRY CLUB HEIGHTS UNIT 25
MB 16/11	COUNTRY CLUB HEIGHTS UNIT 23

October 2010

Date	Old Num	New Num
1/6/2010	322-22-23	2
1/6/2010	322-24-25	31
1/6/2010	322-26-28	32
1/6/2010	322-29-30	33
1/6/2010	322-31-32	34
1/6/2010	322-33-34	35
1/6/2010	322-35-36	36
1/6/2010	322-37-38	37
1/6/2010	322-39-40	38
1/6/2010	322-41-42	39
1/6/2010	322-43-44	40
1/6/2010	322-45-46	41
1/6/2010	322-47-48	42
1/6/2010	322-49-50	43
1/6/2010	322-51-52	44
1/6/2010	322-53-54	45
1/6/2010	322-55-56	46
1/6/2010	322-57-58	47
1/6/2010	322-59-60	48
1/6/2010	322-61-62	49
1/6/2010	322-63-64	50
1/6/2010	322-65-66	51
1/6/2010	322-67-68	52
1/6/2010	322-69-70	53
1/6/2010	322-71-72	54
1/6/2010	322-73-74	55
1/6/2010	322-75-76	56
1/6/2010	322-77-78	57
1/6/2010	322-79-80	58
1/6/2010	322-81-82	59
1/6/2010	322-83-84	60
1/6/2010	322-85-86	61
1/6/2010	322-87-88	62
1/6/2010	322-89-90	63
1/6/2010	322-91-92	64
1/6/2010	322-93-94	65
1/6/2010	322-95-96	66
1/6/2010	322-97-98	67
1/6/2010	322-99-00	68
1/6/2010	322-01-02	69
1/6/2010	322-03-04	70
1/6/2010	322-05-06	71
1/6/2010	322-07-08	72
1/6/2010	322-09-10	73
1/6/2010	322-11-12	74
1/6/2010	322-13-14	75
1/6/2010	322-15-16	76
1/6/2010	322-17-18	77
1/6/2010	322-19-20	78
1/6/2010	322-21-22	79
1/6/2010	322-23-24	80
1/6/2010	322-25-26	81
1/6/2010	322-27-28	82
1/6/2010	322-29-30	83
1/6/2010	322-31-32	84
1/6/2010	322-33-34	85
1/6/2010	322-35-36	86
1/6/2010	322-37-38	87
1/6/2010	322-39-40	88
1/6/2010	322-41-42	89
1/6/2010	322-43-44	90
1/6/2010	322-45-46	91
1/6/2010	322-47-48	92
1/6/2010	322-49-50	93
1/6/2010	322-51-52	94
1/6/2010	322-53-54	95
1/6/2010	322-55-56	96
1/6/2010	322-57-58	97
1/6/2010	322-59-60	98
1/6/2010	322-61-62	99
1/6/2010	322-63-64	00

Legend

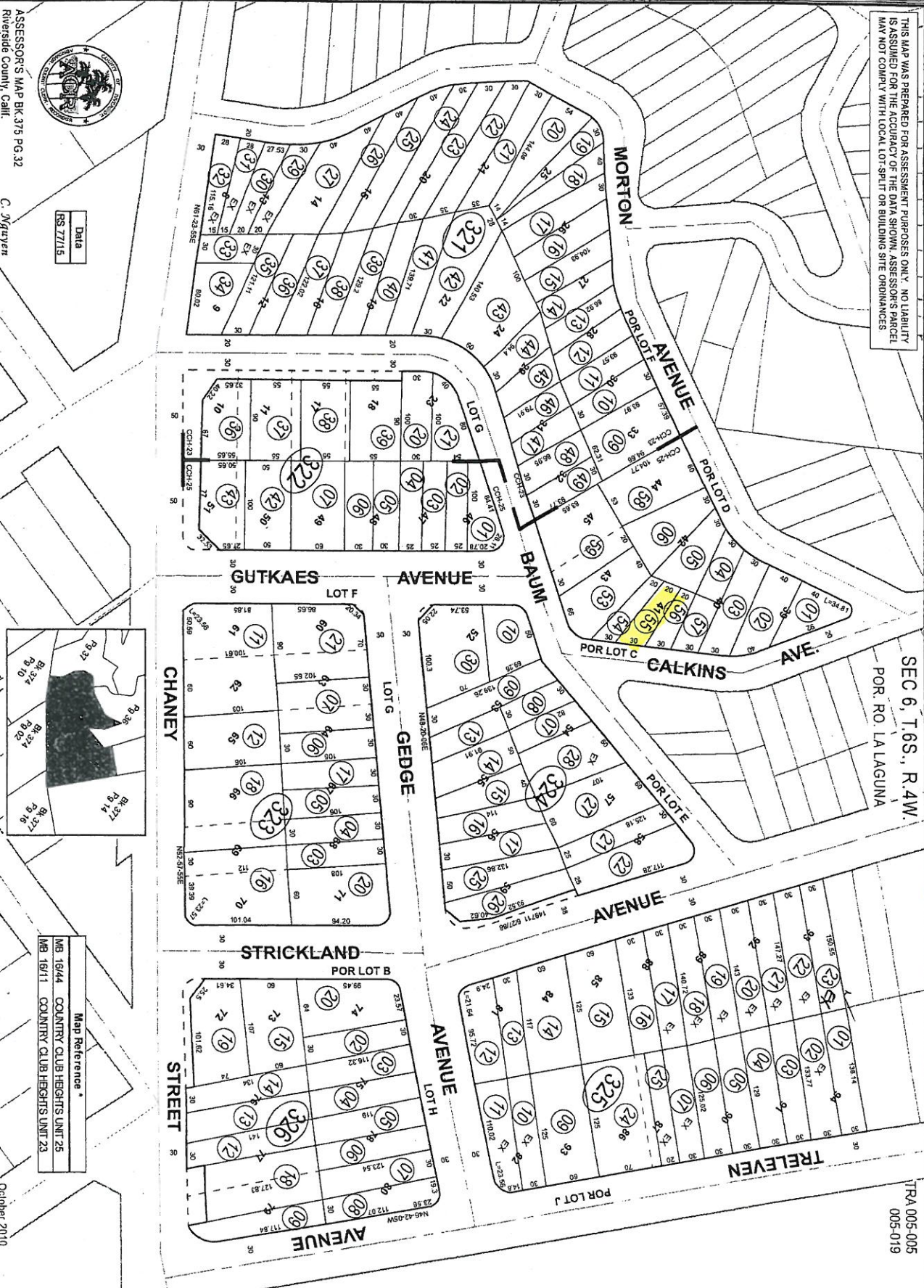
- Let Lines
- Right-Of-Way
- Old Lot Lines
- Reference R.O.W
- Other Easements
- Lease Area
- Subdivision To Be Mapped



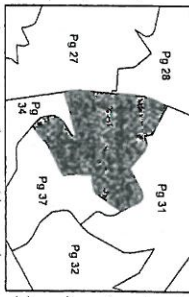
SEC 6, T.6S., R.4W.
 POR. RO. LA LAGUNA

TFA 005-005
 005-019

375-32
 18-29



THIS MAP WAS PREPARED FOR ASSESSMENT PURPOSES ONLY. NO LIABILITY IS ASSUMED FOR THE ACCURACY OF THE DATA SHOWN. ASSESSOR'S PARCEL MAY NOT COMPLY WITH LOCAL LOT SPLIT OR BUILDING SITE ORDINANCES.

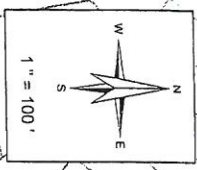


POR, PROTRACTED SEC. 6 T.6S R.4W
CITY OF LAKE ELSINORE

TRA005-005

375-36
375-33

EXHIBIT B - PAGE 95



Legend	
—	Lot Lines
—	Right-of-Way
—	Old Lot Lines
—	Reference R.O.W.
—	Other Easements
—	Unsub. Area
—	Subdivision Tie Mark



ASSESSOR'S MAP BK375 PG.33
Riverside County, Calif.

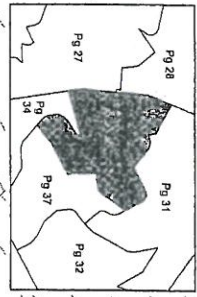


J. Morgan

Map Reference	
ME 15/81	COUNTRY CLUB HEIGHTS UNIT 22
ME 16/11	COUNTRY CLUB HEIGHTS UNIT 23

July 2010

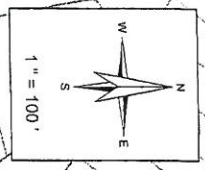
THIS MAP WAS PREPARED FOR ASSESSMENT PURPOSES ONLY. NO LIABILITY IS ASSUMED FOR THE ACCURACY OF THE DATA SHOWN. ASSESSOR'S PARCEL MAY NOT COMPLY WITH LOCAL LOT-SPLIT OR BUILDING SITE ORDINANCES.



POR. PROTRACTED SEC. 6 T.6S R.4W
CITY OF LAKE ELSINORE

TRA 005-005

375-36



Legend

- Lot Lines
- Right-Of-Way
- Old Lot Lines
- Reference R.O.W
- Other Easements
- Easement Area
- Subdivision Tie Mark

EXHIBIT B - PAGE 96



ASSESSOR'S MAP BK375 PG.33
Riverside County, Calif.



J. Morgan

Map Reference

- MB 15/61 COUNTRY CLUB HEIGHTS UNIT 22
- MB 16/11 COUNTRY CLUB HEIGHTS UNIT 23

July 2010

EXHIBIT "C"

NOTICE OF POWER TO SELL TAX-DEFAULTED PROPERTY

AGREEMENT 4410
ELSINORE VALLEY MUNICIPAL WATER DISTRICT

EXHIBIT C

TREASURER-TAX COLLECTOR
STOP 1110

DON KENT
TAX COLLECTOR
4080 LEMON ST - 4TH FLOOR
RIVERSIDE, CALIFORNIA 92501

DOC # 2013-0399978

08/15/2013 12:46P Fee:NC

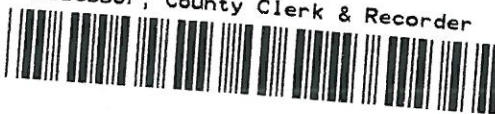
Page 1 of 2

Recorded in Official Records

County of Riverside

Larry W. Ward

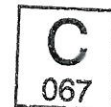
Assessor, County Clerk & Recorder



S	R	U	PAGE	SIZE	DA	MISC	LONG	RFD	COPY
M	A	L	465	426	PCOR	NCOR	SMF	NCHG	EXAM
						T:	CTY	UNI	

00299 SOUTHWEST EDITION

NOTICE OF POWER TO SELL TAX-DEFAULTED PROPERTY



Which, pursuant to law was declared to be Tax-Defaulted on JUNE 30, 2008 for the nonpayment of delinquent taxes in the amount of \$98.81 for the fiscal year 2007-2008, Default Number 2008-375022032-0000.

Notice is hereby given by the Tax Collector of RIVERSIDE County that pursuant to Revenue and Taxation Code §3691 the property described herein is subject to sale for nonpayment of taxes and will be sold unless the amount required to redeem the property is paid to the Tax Collector of said County before sale. The real property subject to this notice is assessed to: INVESTMENT PROP TRUST and is situated in said county, State of California, described as follows:

Assessor's Parcel Number 375022032-6

SEE PAGE 2 ENTITLED LEGAL DESCRIPTION

State of California Executed on
RIVERSIDE County JULY 1, 2013 By Don Kent
Tax Collector

On 07/24/2013, before me, Larry W. Ward, Assessor, Clerk-Recorder, personally appeared Don Kent, Treasurer and Tax Collector for Riverside County, who proved to me on the basis of satisfactory evidence to be the person whose name is subscribed to the within instrument and acknowledged to me that he executed the same in his authorized capacity, and that by his signature on the instrument the person, or the entity upon behalf of which the person acted, executed the instrument.

I certify under PENALTY OF PERJURY under the laws of the State of California that the foregoing paragraph is true and correct.

WITNESS my hand and official seal.
Larry W. Ward, Assessor, Clerk Recorder

By: Sandy Henley Seal
Deputy



LEGAL DESCRIPTION

IN THE CITY OF LAKE ELSINORE

LOT 48, UNIT 20 OF COUNTRY CLUB HEIGHTS, IN THE CITY OF LAKE ELSINORE, COUNTY OF RIVERSIDE, STATE OF CALIFORNIA; AS SHOWN BY MAP ON FILE IN BOOK 15, PAGE 80 OF OFFICIAL RECORDS OF SAID RIVERSIDE COUNTY; EXCEPTING THEREFROM THE NORTHWESTERLY 25 FEET THEREOF.

TREASURER-TAX COLLECTOR
STOP 1110

DON KENT
TAX COLLECTOR
4080 LEMON ST - 4TH FLOOR
RIVERSIDE, CALIFORNIA 92501

DOC # 2013-0399982

08/15/2013 12:46P Fee:NC

Page 1 of 2

Recorded in Official Records

County of Riverside

Larry W. Ward

Assessor, County Clerk & Recorder



S	R	U	PAGE	SIZE	DA	MISC	LONG	RFD	COPY
M	A	L	465	426	PCOR	NCOR	SMF	NCHG	EXAM
						T:	CTY	UNI	

00303 SOUTHWEST EDITION

NOTICE OF POWER TO SELL TAX-DEFAULTED PROPERTY



Which, pursuant to law was declared to be Tax-Defaulted on JUNE 30, 2008 for the nonpayment of delinquent taxes in the amount of \$99.81 for the fiscal year 2007-2008, Default Number 2008-375024025-0000.

Notice is hereby given by the Tax Collector of RIVERSIDE County that pursuant to Revenue and Taxation Code §3691 the property described herein is subject to sale for nonpayment of taxes and will be sold unless the amount required to redeem the property is paid to the Tax Collector of said County before sale. The real property subject to this notice is assessed to: SITL INV and is situated in said county, State of California, described as follows:

Assessor's Parcel Number 375024025-6

SEE PAGE 2 ENTITLED LEGAL DESCRIPTION

State of California Executed on
RIVERSIDE County JULY 1, 2013 By Don Kent
Tax Collector

On 07/24/2013, before me, Larry W. Ward, Assessor, Clerk-Recorder, personally appeared Don Kent, Treasurer and Tax Collector for Riverside County, who proved to me on the basis of satisfactory evidence to be the person whose name is subscribed to the within instrument and acknowledged to me that he executed the same in his authorized capacity, and that by his signature on the instrument the person, or the entity upon behalf of which the person acted, executed the instrument.

I certify under PENALTY OF PERJURY under the laws of the State of California that the foregoing paragraph is true and correct.

WITNESS my hand and official seal.
Larry W. Ward, Assessor, Clerk Recorder

By: Sandy Traly Seal
Deputy



LEGAL DESCRIPTION

IN THE CITY OF LAKE ELSINORE

THAT PORTION OF LOT 170, UNIT 12 OF COUNTRY CLUB HEIGHTS, IN THE CITY OF LAKE ELSINORE, COUNTY OF RIVERSIDE, STATE OF CALIFORNIA; AS SHOWN BY MAP ON FILE IN BOOK 14, PAGES 85-86 OF MAPS RECORDS OF SAID RIVERSIDE COUNTY, DESCRIBED AS FOLLOWS: BEGINNING AT THE MOST SOUTHERLY CORNER OF SAID LOT; THENCE NORTHEASTERLY ALONG THE SOUTHEASTERLY LINE OF SAID LOT, A DISTANCE OF 66 FEET; THENCE NORTHWESTERLY AT RIGHT ANGLES TO SAID SOUTHEASTERLY LINE TO A STRAIGHT LINE DRAWN FROM A POINT IN THE EASTERLY LINE OF SAID LOT WHICH POINT IS DISTANT SOUTHEASTERLY 30 FEET, MEASURED ALONG SAID EASTERLY LINE, FROM THE MOST NORTHERLY CORNER OF SAID LOT, TO A POINT IN THE SOUTHWESTERLY LINE OF SAID LOT, WHICH POINT DISTANT SOUTHEASTERLY 31 FEET, MEASURED ALONG SAID SOUTHWESTERLY LINE, FROM THE MOST WESTERLY CORNER OF SAID LOT, TO THE TRUE POINT OF BEGINNING; THENCE NORTHWESTERLY IN A DIRECT LINE TO THE SOUTHWEST CORNER OF LOT 171 IN SAID UNIT 12; THENCE SOUTHWESTERLY ALONG THE NORTHWESTERLY LINE OF SAID LOT 170, A DISTANCE OF 64.60 FEET MORE OR LESS TO THE MOST WESTERLY CORNER OF SAID LOT 170; THENCE SOUTHEASTERLY ALONG THE SOUTHWESTERLY LINE OF SAID LOT 170, A DISTANCE OF 31 FEET; THENCE NORTHEASTERLY IN A DIRECT LINE TO THE TRUE POINT OF BEGINNING.

TREASURER-TAX COLLECTOR
STOP 1110

DON KENT
TAX COLLECTOR
4080 LEMON ST - 4TH FLOOR
RIVERSIDE, CALIFORNIA 92501

DOC # 2013-0399983

08/15/2013 12:46P Fee:NC

Page 1 of 2

Recorded in Official Records

County of Riverside

Larry W. Ward

Assessor, County Clerk & Recorder



S	R	U	PAGE	SIZE	DA	MISC	LONG	RFD	COPY
M	A	L	465	426	PCOR	NCOR	SMF	NCHG	EXAM
						T:	CTY	UNI	

00304 SOUTHWEST EDITION

NOTICE OF POWER TO SELL TAX-DEFAULTED PROPERTY



Which, pursuant to law was declared to be Tax-Defaulted on JUNE 30, 2008 for the nonpayment of delinquent taxes in the amount of \$99.81 for the fiscal year 2007-2008, Default Number 2008-375024026-0000.

Notice is hereby given by the Tax Collector of RIVERSIDE County that pursuant to Revenue and Taxation Code §3691 the property described herein is subject to sale for nonpayment of taxes and will be sold unless the amount required to redeem the property is paid to the Tax Collector of said County before sale. The real property subject to this notice is assessed to: SITL INV and is situated in said county, State of California, described as follows:

Assessor's Parcel Number 375024026-7

SEE PAGE 2 ENTITLED LEGAL DESCRIPTION

State of California Executed on
RIVERSIDE County JULY 1, 2013

By *Don Kent*
Tax Collector

On 07/24/2013, before me, Larry W. Ward, Assessor, Clerk-Recorder, personally appeared Don Kent, Treasurer and Tax Collector for Riverside County, who proved to me on the basis of satisfactory evidence to be the person whose name is subscribed to the within instrument and acknowledged to me that he executed the same in his authorized capacity, and that by his signature on the instrument the person, or the entity upon behalf of which the person acted, executed the instrument.

I certify under PENALTY OF PERJURY under the laws of the State of California that the foregoing paragraph is true and correct.

WITNESS my hand and official seal.
Larry W. Ward, Assessor, Clerk Recorder

By: *Larry W. Ward* Seal
Deputy



LEGAL DESCRIPTION

IN THE CITY OF LAKE ELSINORE

THAT PORTION OF LOT 170 UNIT 12 OF COUNTRY CLUB HEIGHTS, IN THE CITY OF LAKE ELSINORE, COUNTY OF RIVERSIDE, STATE OF CALIFORNIA; AS SHOWN BY MAP ON FILE IN BOOK 14, PAGES 85-86 OF MAPS RECORDS OF SAID RIVERSIDE COUNTY, DESCRIBED AS FOLLOWS: BEGINNING AT THE MOST SOUTHERLY CORNER OF SAID LOT; THENCE NORTHEASTERLY ALONG THE SOUTHEASTERLY LINE OF SAID LOT, A DISTANCE OF 66 FEET; THENCE NORTHWESTERLY AT RIGHT ANGLES TO SAID SOUTHEASTERLY LINE TO A STRAIGHT LINE DRAWN FROM A POINT IN THE EASTERLY LINE OF SAID LOT WHICH POINT IS DISTANT SOUTHEASTERLY 30 FEET, MEASURED ALONG SAID EASTERLY LINE, FROM THE MOST NORTHERLY CORNER OF SAID LOT, TO A POINT IN THE SOUTHWESTERLY LINE OF SAID LOT, WHICH POINT DISTANT SOUTHEASTERLY 31 FEET, MEASURED ALONG SAID SOUTHWESTERLY LINE, FROM THE MOST WESTERLY CORNER OF SAID LOT; THENCE SOUTHWESTERLY IN A DIRECT LINE TO A POINT IN THE SOUTHWESTERLY LINE OF SAID LOT, WHICH POINT IS DISTANT SOUTHEASTERLY 31 FEET, MEASURED ALONG SAID SOUTHWESTERLY LINE FROM THE MOST WESTERLY CORNER OF SAID LOT; THENCE SOUTHWESTERLY ALONG SAID SOUTHWESTERLY LINE 30.09 FEET MORE OR LESS, TO THE POINT OF BEGINNING.

TREASURER-TAX COLLECTOR
STOP 1110

DON KENT
TAX COLLECTOR
4080 LEMON ST - 4TH FLOOR
RIVERSIDE, CALIFORNIA 92501

DOC # 2013-0399984

08/15/2013 12:46P Fee:NC

Page 1 of 2

Recorded in Official Records

County of Riverside

Larry W. Ward

Assessor, County Clerk & Recorder



S	R	U	PAGE	SIZE	DA	MISC	LONG	RFD	COPY
M	A	L	465	426	PCOR	NCOR	SMF	NCHG	EXAM
						T:	CTY	UNI	

00305 SOUTHWEST EDITION

NOTICE OF POWER TO SELL TAX-DEFAULTED PROPERTY



Which, pursuant to law was declared to be Tax-Defaulted on JUNE 30, 2008 for the nonpayment of delinquent taxes in the amount of \$96.99 for the fiscal year 2007-2008, Default Number 2008-375024027-0000.

Notice is hereby given by the Tax Collector of RIVERSIDE County that pursuant to Revenue and Taxation Code §3691 the property described herein is subject to sale for nonpayment of taxes and will be sold unless the amount required to redeem the property is paid to the Tax Collector of said County before sale. The real property subject to this notice is assessed to: SITL INV and is situated in said county, State of California, described as follows:

Assessor's Parcel Number 375024027-8

SEE PAGE 2 ENTITLED LEGAL DESCRIPTION

State of California Executed on
RIVERSIDE County JULY 1, 2013 By Don Kent
Tax Collector

On 07/24/2013, before me, Larry W. Ward, Assessor, Clerk-Recorder, personally appeared Don Kent, Treasurer and Tax Collector for Riverside County, who proved to me on the basis of satisfactory evidence to be the person whose name is subscribed to the within instrument and acknowledged to me that he executed the same in his authorized capacity, and that by his signature on the instrument the person, or the entity upon behalf of which the person acted, executed the instrument.

I certify under PENALTY OF PERJURY under the laws of the State of California that the foregoing paragraph is true and correct.

WITNESS my hand and official seal.
Larry W. Ward, Assessor, Clerk Recorder

By: Sandy Stanley Seal
Deputy



LEGAL DESCRIPTION

IN THE CITY OF LAKE ELSINORE

THAT PORTION OF LOT 98, UNIT 20 OF COUNTRY CLUB HEIGHTS, IN THE CITY OF LAKE ELSINORE, COUNTY OF RIVERSIDE, STATE OF CALIFORNIA; AS SHOWN BY MAP ON FILE IN BOOK 15, PAGE 80 OF OFFICIAL RECORDS OF SAID RIVERSIDE COUNTY, DESCRIBED AS FOLLOWS: BEGINNING AT THE MOST NORTHERLY CORNER OF SAID LOT; THENCE SOUTHEASTERLY ALONG THE NORTHEASTERLY LINE OF SAID LOT A DISTANCE OF 27 FEET; THENCE SOUTHWESTERLY IN A DIRECT LINE TO A POINT IN THE SOUTHWESTERLY LINE OF SAID LOT, WHICH POINT IS DISTANT NORTHWESTERLY 59 FEET, MEASURED ALONG SAID SOUTHWESTERLY LINE, FROM THE MOST SOUTHERLY CORNER OF SAID LOT; THENCE NORTHWESTERLY ALONG SAID SOUTHWESTERLY LINE 29 FEET MORE OR LESS, TO THE MOST WESTERLY CORNER OF SAID LOT; THENCE NORTHEASTERLY ALONG SAID NORTHWESTERLY LINE OF SAID LOT 82 TO THE POINT OF BEGINNING.

TREASURER-TAX COLLECTOR
STOP 1110

DON KENT
TAX COLLECTOR
4080 LEMON ST - 4TH FLOOR
RIVERSIDE, CALIFORNIA 92501

DOC # 2013-0399985

08/15/2013 12:46P Fee:NC

Page 1 of 2

Recorded in Official Records

County of Riverside

Larry W. Ward

Assessor, County Clerk & Recorder



S	R	U	PAGE	SIZE	DA	MISC	LONG	RFD	COPY
M	A	L	465	426	PCOR	NCOR	SMF	NCHG	EXAM
							T:	CTY	UNI

00306 SOUTHWEST EDITION

NOTICE OF POWER TO SELL TAX-DEFAULTED PROPERTY



Which, pursuant to law was declared to be Tax-Defaulted on JUNE 30, 2008 for the nonpayment of delinquent taxes in the amount of \$74.19 for the fiscal year 2007-2008, Default Number 2008-375024036-0000.

Notice is hereby given by the Tax Collector of RIVERSIDE County that pursuant to Revenue and Taxation Code §3691 the property described herein is subject to sale for nonpayment of taxes and will be sold unless the amount required to redeem the property is paid to the Tax Collector of said County before sale. The real property subject to this notice is assessed to: CHADWICK, NORMAN L & ROGER K TR and is situated in said county, State of California, described as follows:

Assessor's Parcel Number 375024036-6

SEE PAGE 2 ENTITLED LEGAL DESCRIPTION

State of California Executed on
RIVERSIDE County JULY 1, 2013

By *Don Kent*
Tax Collector

On 07/24/2013, before me, Larry W. Ward, Assessor, Clerk-Recorder, personally appeared Don Kent, Treasurer and Tax Collector for Riverside County, who proved to me on the basis of satisfactory evidence to be the person whose name is subscribed to the within instrument and acknowledged to me that he executed the same in his authorized capacity, and that by his signature on the instrument the person, or the entity upon behalf of which the person acted, executed the instrument.

I certify under PENALTY OF PERJURY under the laws of the State of California that the foregoing paragraph is true and correct.

WITNESS my hand and official seal.
Larry W. Ward, Assessor, Clerk Recorder

By: *Sandy Stanley* Seal
Deputy



LEGAL DESCRIPTION

IN THE CITY OF LAKE ELSINORE

THE EASTERLY HALF OF LOT 90, UNIT 20 OF COUNTRY CLUB HEIGHTS, IN THE CITY OF LAKE ELSINORE, COUNTY OF RIVERSIDE, STATE OF CALIFORNIA; AS SHOWN BY MAP ON FILE IN BOOK 15, PAGE 80 OF OFFICIAL RECORDS OF SAID RIVERSIDE COUNTY.

TREASURER-TAX COLLECTOR
STOP 1110

DON KENT
TAX COLLECTOR
4080 LEMON ST - 4TH FLOOR
RIVERSIDE, CALIFORNIA 92501

DOC # 2013-0399986

08/15/2013 12:46P Fee:NC

Page 1 of 2

Recorded in Official Records

County of Riverside

Larry W. Ward

Assessor, County Clerk & Recorder



S	R	U	PAGE	SIZE	DA	MISC	LONG	RFD	COPY
M	A	L	465	426	PCOR	NCOR	SMF	NCHG	EXAM
						T:	CTY	UNI	

00307 SOUTHWEST EDITION

NOTICE OF POWER TO SELL TAX-DEFAULTED PROPERTY

Which, pursuant to law was declared to be Tax-Defaulted on JUNE 30, 2008 for the nonpayment of delinquent taxes in the amount of \$98.81 for the fiscal year 2007-2008, Default Number 2008-375024037-0000.



Notice is hereby given by the Tax Collector of RIVERSIDE County that pursuant to Revenue and Taxation Code §3691 the property described herein is subject to sale for nonpayment of taxes and will be sold unless the amount required to redeem the property is paid to the Tax Collector of said County before sale. The real property subject to this notice is assessed to: INVESTMENT PROP TRUST and is situated in said county, State of California, described as follows:

Assessor's Parcel Number 375024037-7

SEE PAGE 2 ENTITLED LEGAL DESCRIPTION

State of California Executed on
RIVERSIDE County JULY 1, 2013 By *Don Kent*
Tax Collector

On 07/24/2013, before me, Larry W. Ward, Assessor, Clerk-Recorder, personally appeared Don Kent, Treasurer and Tax Collector for Riverside County, who proved to me on the basis of satisfactory evidence to be the person whose name is subscribed to the within instrument and acknowledged to me that he executed the same in his authorized capacity, and that by his signature on the instrument the person, or the entity upon behalf of which the person acted, executed the instrument.

I certify under PENALTY OF PERJURY under the laws of the State of California that the foregoing paragraph is true and correct.

WITNESS my hand and official seal.
Larry W. Ward, Assessor, Clerk Recorder

By: *Sandy* Deputy Seal



LEGAL DESCRIPTION

IN THE CITY OF LAKE ELSINORE

THE WESTERLY HALF OF LOT 89, UNIT 20 OF COUNTRY CLUB HEIGHTS, IN THE CITY OF LAKE ELSINORE, COUNTY OF RIVERSIDE, STATE OF CALIFORNIA; AS SHOWN BY MAP ON FILE IN BOOK 15, PAGE 80 OF OFFICIAL RECORDS OF SAID RIVERSIDE COUNTY.

TREASURER-TAX COLLECTOR
STOP 1110

DON KENT
TAX COLLECTOR
4080 LEMON ST - 4TH FLOOR
RIVERSIDE, CALIFORNIA 92501

DOC # 2013-0399987

08/15/2013 12:46P Fee:NC

Page 1 of 2

Recorded in Official Records

County of Riverside

Larry W. Ward

Assessor, County Clerk & Recorder



S	R	U	PAGE	SIZE	DA	MISC	LONG	RFD	COPY
M	A	L	465	426	PCOR	NCOR	SMF	NCHG	EXAM
						T:	CTY	UNI	

00308 SOUTHWEST EDITION

NOTICE OF POWER TO SELL TAX-DEFAULTED PROPERTY



Which, pursuant to law was declared to be Tax-Defaulted on JUNE 30, 2008 for the nonpayment of delinquent taxes in the amount of \$102.63 for the fiscal year 2007-2008, Default Number 2008-375024059-0000.

Notice is hereby given by the Tax Collector of RIVERSIDE County that pursuant to Revenue and Taxation Code §3691 the property described herein is subject to sale for nonpayment of taxes and will be sold unless the amount required to redeem the property is paid to the Tax Collector of said County before sale. The real property subject to this notice is assessed to: INVESTMENT PROP TRUST and is situated in said county, State of California, described as follows:

Assessor's Parcel Number 375024059-7

SEE PAGE 2 ENTITLED LEGAL DESCRIPTION

State of California Executed on
RIVERSIDE County JULY 1, 2013 By Don Kent
Tax Collector

On 07/24/2013, before me, Larry W. Ward, Assessor, Clerk-Recorder, personally appeared Don Kent, Treasurer and Tax Collector for Riverside County, who proved to me on the basis of satisfactory evidence to be the person whose name is subscribed to the within instrument and acknowledged to me that he executed the same in his authorized capacity, and that by his signature on the instrument the person, or the entity upon behalf of which the person acted, executed the instrument.

I certify under PENALTY OF PERJURY under the laws of the State of California that the foregoing paragraph is true and correct.

WITNESS my hand and official seal.
Larry W. Ward, Assessor, Clerk Recorder

By: Sandy [Signature] Seal
Deputy



LEGAL DESCRIPTION

IN THE CITY OF LAKE ELSINORE

THE EASTERLY HALF OF LOT 50, UNIT 20 OF COUNTRY CLUB HEIGHTS, IN THE CITY OF LAKE ELSINORE, COUNTY OF RIVERSIDE, STATE OF CALIFORNIA; AS SHOWN BY MAP ON FILE IN BOOK 15, PAGE 80 OF OFFICIAL RECORDS OF SAID RIVERSIDE COUNTY.

TREASURER-TAX COLLECTOR
STOP 1110

DON KENT
TAX COLLECTOR
4080 LEMON ST - 4TH FLOOR
RIVERSIDE, CALIFORNIA 92501

DOC # 2013-0399988

08/15/2013 12:46P Fee:NC

Page 1 of 2

Recorded in Official Records

County of Riverside

Larry W. Ward

Assessor, County Clerk & Recorder



S	R	U	PAGE	SIZE	DA	MISC	LONG	RFD	COPY
M	A	L	465	426	PCOR	NCOR	SMF	NCHG	EXAM
						T:	CTY	UNI	

00309 SOUTHWEST EDITION

NOTICE OF POWER TO SELL TAX-DEFAULTED PROPERTY



Which, pursuant to law was declared to be Tax-Defaulted on JUNE 30, 2008 for the nonpayment of delinquent taxes in the amount of \$98.81 for the fiscal year 2007-2008, Default Number 2008-375024061-0000.

Notice is hereby given by the Tax Collector of RIVERSIDE County that pursuant to Revenue and Taxation Code §3691 the property described herein is subject to sale for nonpayment of taxes and will be sold unless the amount required to redeem the property is paid to the Tax Collector of said County before sale. The real property subject to this notice is assessed to: INVESTMENT PROP TRUST and is situated in said county, State of California, described as follows:

Assessor's Parcel Number 375024061-8

SEE PAGE 2 ENTITLED LEGAL DESCRIPTION

State of California Executed on
RIVERSIDE County JULY 1, 2013 By Don Kent
Tax Collector

On 07/24/2013, before me, Larry W. Ward, Assessor, Clerk-Recorder, personally appeared Don Kent, Treasurer and Tax Collector for Riverside County, who proved to me on the basis of satisfactory evidence to be the person whose name is subscribed to the within instrument and acknowledged to me that he executed the same in his authorized capacity, and that by his signature on the instrument the person, or the entity upon behalf of which the person acted, executed the instrument.

I certify under PENALTY OF PERJURY under the laws of the State of California that the foregoing paragraph is true and correct.

WITNESS my hand and official seal.
Larry W. Ward, Assessor, Clerk & Recorder

By: Sandy Stanley Seal
Deputy



LEGAL DESCRIPTION

IN THE CITY OF LAKE ELSINORE

LOT 46 OF UNIT 20 OF COUNTRY CLUB HEIGHTS, IN THE CITY OF LAKE ELSINORE, COUNTY OF RIVERSIDE, STATE OF CALIFORNIA; AS SHOWN BY MAP ON FILE IN BOOK 15, PAGE 80 OF OFFICIAL RECORDS OF SAID RIVERSIDE COUNTY; EXCEPTING THEREFROM THE WESTERLY 25 FEET THEREOF.

TREASURER-TAX COLLECTOR
STOP 1110

DON KENT
TAX COLLECTOR
4080 LEMON ST - 4TH FLOOR
RIVERSIDE, CALIFORNIA 92501

DOC # 2013-0399989
08/15/2013 12:46P Fee:NC
Page 1 of 2
Recorded in Official Records
County of Riverside
Larry W. Ward
Assessor, County Clerk & Recorder



S	R	U	PAGE	SIZE	DA	MISC	LONG	RFD	COPY
M	A	L	465	426	PCOR	NCOR	SMF	NCHG	EXAM
						T:	CTY	UNI	

00310 SOUTHWEST EDITION

NOTICE OF POWER TO SELL TAX-DEFAULTED PROPERTY

C
067

Which, pursuant to law was declared to be Tax-Defaulted on JUNE 30, 2008 for the nonpayment of delinquent taxes in the amount of \$98.87 for the fiscal year 2007-2008, Default Number 2008-375024063-0000.

Notice is hereby given by the Tax Collector of RIVERSIDE County that pursuant to Revenue and Taxation Code §3691 the property described herein is subject to sale for nonpayment of taxes and will be sold unless the amount required to redeem the property is paid to the Tax Collector of said County before sale. The real property subject to this notice is assessed to: INVESTMENT PROP TRUST and is situated in said county, State of California, described as follows:

Assessor's Parcel Number 375024063-0

SEE PAGE 2 ENTITLED LEGAL DESCRIPTION

State of California Executed on
RIVERSIDE County JULY 1, 2013 By *Don Kent*
Tax Collector

On 07/24/2013, before me, Larry W. Ward, Assessor, Clerk-Recorder, personally appeared Don Kent, Treasurer and Tax Collector for Riverside County, who proved to me on the basis of satisfactory evidence to be the person whose name is subscribed to the within instrument and acknowledged to me that he executed the same in his authorized capacity, and that by his signature on the instrument the person, or the entity upon behalf of which the person acted, executed the instrument.

I certify under PENALTY OF PERJURY under the laws of the State of California that the foregoing paragraph is true and correct.

WITNESS my hand and official seal.
Larry W. Ward, Assessor, Clerk Recorder

By: *Sandy Trily* Seal
Deputy



LEGAL DESCRIPTION

IN THE CITY OF LAKE ELSINORE

A PORTION OF LOT 44 UNIT 20 OF COUNTRY CLUB HEIGHTS, IN THE CITY OF LAKE ELSINORE, COUNTY OF RIVERSIDE, STATE OF CALIFORNIA; AS SHOWN BY MAP ON FILE IN BOOK 15, PAGES 80 OF MAPS RECORDS OF SAID RIVERSIDE COUNTY, DESCRIBED AS FOLLOWS: BEGINNING AT THE SOUTHERLY CORNER OF SAID LOT; THENCE NORTHEASTERLY ON THE SOUTHEASTERLY LINE OF SAID LOT, 40 FEET; THENCE NORTHEASTERLY TO A POINT IN THE NORTHEASTERLY LINE OF SAID LOT DISTANT SOUTHEASTERLY 25 FEET FROM THE NORTHERLY CORNER; THENCE NORTHWESTERLY ON THE NORTHEASTERLY LINE 25 FEET TO THE NORTHERLY CORNER; THENCE SOUTHWESTERLY ON THE NORTHWESTERLY LINE, 114 FEET TO THE POINT OF BEGINNING.

TREASURER-TAX COLLECTOR
STOP 1110

DON KENT
TAX COLLECTOR
4080 LEMON ST - 4TH FLOOR
RIVERSIDE, CALIFORNIA 92501

DOC # 2013-0399990

08/15/2013 12:46P Fee:NC

Page 1 of 2

Recorded in Official Records

County of Riverside

Larry W. Ward

Assessor, County Clerk & Recorder



S	R	U	PAGE	SIZE	DA	MISC	LONG	RFD	COPY
M	A	L	465	426	PCOR	NCOR	SMF	NCHG	EXAM
						T:	CTY	UNI	

00311 SOUTHWEST EDITION

NOTICE OF POWER TO SELL TAX-DEFAULTED PROPERTY



Which, pursuant to law was declared to be Tax-Defaulted on JUNE 30, 2008 for the nonpayment of delinquent taxes in the amount of \$102.63 for the fiscal year 2007-2008, Default Number 2008-375024065-0000.

Notice is hereby given by the Tax Collector of RIVERSIDE County that pursuant to Revenue and Taxation Code §3691 the property described herein is subject to sale for nonpayment of taxes and will be sold unless the amount required to redeem the property is paid to the Tax Collector of said County before sale. The real property subject to this notice is assessed to: INVESTMENT PROP TRUST and is situated in said county, State of California, described as follows:

Assessor's Parcel Number 375024065-2

SEE PAGE 2 ENTITLED LEGAL DESCRIPTION

State of California Executed on
RIVERSIDE County JULY 1, 2013 By Don Kent
Tax Collector

On 07/24/2013, before me, Larry W. Ward, Assessor, Clerk-Recorder, personally appeared Don Kent, Treasurer and Tax Collector for Riverside County, who proved to me on the basis of satisfactory evidence to be the person whose name is subscribed to the within instrument and acknowledged to me that he executed the same in his authorized capacity, and that by his signature on the instrument the person, or the entity upon behalf of which the person acted, executed the instrument.

I certify under PENALTY OF PERJURY under the laws of the State of California that the foregoing paragraph is true and correct.

WITNESS my hand and official seal.
Larry W. Ward, Assessor, Clerk Recorder

By: Sandy Staley Deputy Seal



LEGAL DESCRIPTION

IN THE CITY OF LAKE ELSINORE

A PORTION OF LOT 49 UNIT 20 OF COUNTRY CLUB HEIGHTS, IN THE CITY OF LAKE ELSINORE, COUNTY OF RIVERSIDE, STATE OF CALIFORNIA; AS SHOWN BY MAP ON FILE IN BOOK 15, PAGES 80 OF MAPS RECORDS OF SAID RIVERSIDE COUNTY, DESCRIBED AS FOLLOWS: BEGINNING AT THE SOUTHERLY CORNER OF SAID LOT; THENCE NORTHEASTERLY ON THE SOUTHEASTERLY LINE OF SAID LOT 37 FEET; THENCE NORTHEASTERLY TO A POINT IN THE NORTHEASTERLY LINE OF SAID LOT DISTANT NORTHWESTERLY 25 FEET MEASURED ALONG THE NORTHERLY LINE FROM THE MOST EASTERLY CORNER OF SAID LOT; THENCE NORTHWESTERLY ALONG SAID NORTHEASTERLY LINE 25 FEET TO THE MOST NORTHERLY CORNER; THENCE SOUTHWESTERLY ALONG THE NORTHWESTERLY LINE, 129 FEET TO THE POINT OF BEGINNING.

TREASURER-TAX COLLECTOR
STOP 1110

DON KENT
TAX COLLECTOR
4080 LEMON ST - 4TH FLOOR
RIVERSIDE, CALIFORNIA 92501

DOC # 2013-0400283

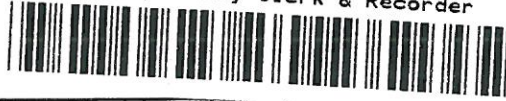
08/15/2013 01:14P Fee:NC

Page 1 of 2

Recorded in Official Records
County of Riverside

Larry W. Ward

Assessor, County Clerk & Recorder



S	R	U	PAGE	SIZE	DA	MISC	LONG	RFD	COPY
M	A	L	465	426	PCOR	NCOR	SMF	NCHG	EXAM
						T:	CTY	UNI	

00428 SOUTHWEST EDITION

NOTICE OF POWER TO SELL TAX-DEFAULTED PROPERTY



Which, pursuant to law was declared to be Tax-Defaulted on JUNE 30, 2008 for the nonpayment of delinquent taxes in the amount of \$342.88 for the fiscal year 2006-2007, Default Number 2008-375131002-0000.

Notice is hereby given by the Tax Collector of RIVERSIDE County that pursuant to Revenue and Taxation Code §3691 the property described herein is subject to sale for nonpayment of taxes and will be sold unless the amount required to redeem the property is paid to the Tax Collector of said County before sale. The real property subject to this notice is assessed to: CARRILLO, CLAUDIA and is situated in said county, State of California, described as follows:

Assessor's Parcel Number 375131002-6

SEE PAGE 2 ENTITLED LEGAL DESCRIPTION

State of California Executed on
RIVERSIDE County JULY 1, 2013

By *Don Kent*
Tax Collector

On 07/24/2013, before me, Larry W. Ward, Assessor, Clerk-Recorder, personally appeared Don Kent, Treasurer and Tax Collector for Riverside County, who proved to me on the basis of satisfactory evidence to be the person whose name is subscribed to the within instrument and acknowledged to me that he executed the same in his authorized capacity, and that by his signature on the instrument the person, or the entity upon behalf of which the person acted, executed the instrument.

I certify under PENALTY OF PERJURY under the laws of the State of California that the foregoing paragraph is true and correct.

WITNESS my hand and official seal.
Larry W. Ward, Assessor, Clerk Recorder

By: *Sandep Arslan* Seal
Deputy



LEGAL DESCRIPTION

IN THE CITY OF LAKE ELSINORE

LOT 119 OF SUNSET KNOLLS UNIT NO. 1, IN THE CITY OF LAKE ELSINORE, COUNTY OF RIVERSIDE, STATE OF CALIFORNIA, AS SHOWN BY MAP ON FILE IN BOOK 18 PAGES 60 THROUGH 61 OF MAPS, RECORDS OF SAID RIVERSIDE COUNTY.

TREASURER-TAX COLLECTOR
STOP 1110

DON KENT
TAX COLLECTOR
4080 LEMON ST - 4TH FLOOR
RIVERSIDE, CALIFORNIA 92501

DOC # 2013-0400284

08/15/2013 01:14P Fee:NC

Page 1 of 2

Recorded in Official Records

County of Riverside

Larry W. Ward

Assessor, County Clerk & Recorder



S	R	U	PAGE	SIZE	DA	MISC	LONG	RFD	COPY
M	A	L	465	426	PCOR	NCOR	SMF	NCHG	EXAM
						T:	CTY	UNI	

00429 SOUTHWEST EDITION

NOTICE OF POWER TO SELL TAX-DEFAULTED PROPERTY



Which, pursuant to law was declared to be Tax-Defaulted on JUNE 30, 2008 for the nonpayment of delinquent taxes in the amount of \$137.86 for the fiscal year 2007-2008, Default Number 2008-375131016-0000.

Notice is hereby given by the Tax Collector of RIVERSIDE County that pursuant to Revenue and Taxation Code §3691 the property described herein is subject to sale for nonpayment of taxes and will be sold unless the amount required to redeem the property is paid to the Tax Collector of said County before sale. The real property subject to this notice is assessed to: POWELL, ADAM and is situated in said county, State of California, described as follows:

Assessor's Parcel Number 375131016-9

SEE PAGE 2 ENTITLED LEGAL DESCRIPTION

State of California Executed on
RIVERSIDE County JULY 1, 2013

By *Don Kent*
Tax Collector

On 07/24/2013, before me, Larry W. Ward, Assessor, Clerk-Recorder, personally appeared Don Kent, Treasurer and Tax Collector for Riverside County, who proved to me on the basis of satisfactory evidence to be the person whose name is subscribed to the within instrument and acknowledged to me that he executed the same in his authorized capacity, and that by his signature on the instrument the person, or the entity upon behalf of which the person acted, executed the instrument.

I certify under PENALTY OF PERJURY under the laws of the State of California that the foregoing paragraph is true and correct.

WITNESS my hand and official seal.
Larry W. Ward, Assessor, Clerk Recorder

By: *Sandy Tenley* Seal
Deputy



LEGAL DESCRIPTION

IN THE CITY OF LAKE ELSINORE

LOT 105 OF SUNSET KNOLLS UNIT NO. 1, IN THE CITY OF LAKE ELSINORE, COUNTY OF RIVERSIDE, STATE OF CALIFORNIA, AS SHOWN BY MAP ON FILE IN BOOK 18 PAGES 60 THROUGH 61 OF MAPS, RECORDS OF SAID RIVERSIDE COUNTY.

TREASURER-TAX COLLECTOR
STOP 1110

DON KENT
TAX COLLECTOR
4080 LEMON ST - 4TH FLOOR
RIVERSIDE, CALIFORNIA 92501

DOC # 2013-0400285

08/15/2013 01:14P Fee:NC

Page 1 of 2

Recorded in Official Records

County of Riverside

Larry W. Ward

Assessor, County Clerk & Recorder



S	R	U	PAGE	SIZE	DA	MISC	LONG	RFD	COPY
M	A	L	465	426	PCOR	NCOR	SMF	NCHG	EXAM
						T:	CTY	UNI	

00431 SOUTHWEST EDITION

NOTICE OF POWER TO SELL TAX-DEFAULTED PROPERTY



Which, pursuant to law was declared to be Tax-Defaulted on JUNE 30, 2008 for the nonpayment of delinquent taxes in the amount of \$178.78 for the fiscal year 2007-2008, Default Number 2008-375131050-0000.

Notice is hereby given by the Tax Collector of RIVERSIDE County that pursuant to Revenue and Taxation Code §3691 the property described herein is subject to sale for nonpayment of taxes and will be sold unless the amount required to redeem the property is paid to the Tax Collector of said County before sale. The real property subject to this notice is assessed to: HESS JUNE ESTATE OF & COUNTRY CLUB HOLDINGS and is situated in said county, State of California, described as follows:

Assessor's Parcel Number 375131050-9

SEE PAGE 2 ENTITLED LEGAL DESCRIPTION

State of California Executed on
RIVERSIDE County JULY 1, 2013

By *Don Kent*
Tax Collector

On 07/24/2013, before me, Larry W. Ward, Assessor, Clerk-Recorder, personally appeared Don Kent, Treasurer and Tax Collector for Riverside County, who proved to me on the basis of satisfactory evidence to be the person whose name is subscribed to the within instrument and acknowledged to me that he executed the same in his authorized capacity, and that by his signature on the instrument the person, or the entity upon behalf of which the person acted, executed the instrument.

I certify under PENALTY OF PERJURY under the laws of the State of California that the foregoing paragraph is true and correct.

WITNESS my hand and official seal.
Larry W. Ward, Assessor, Clerk Recorder

By: *Sandy Staley*
Deputy

Seal



LEGAL DESCRIPTION

IN THE CITY OF LAKE ELSINORE

THAT PORTION OF LOT 49 OF COUNTRY CLUB HEIGHTS UNIT NO. 24, IN THE CITY OF LAKE ELSINORE, COUNTY OF RIVERSIDE, STATE OF CALIFORNIA, AS SHOWN BY MAP ON FILE IN BOOK 16, PAGE 71 OF MAPS RECORDS OF SAID RIVERSIDE COUNTY, CALIFORNIA, DESCRIBED AS FOLLOWS: BEGINNING AT THE MOST WESTERLY CORNER OF SAID LOT; THENCE SOUTHEASTERLY ALONG THE SOUTHWESTERLY LINE OF SAID LOT 103 FEET TO THE MOST EASTERLY CORNER OF LOT 50 IN SAID UNIT 24; THENCE SOUTHEASTERLY ALONG AND FOLLOWING THE SOUTHWESTERLY LINE OF LOT 49, A DISTANCE OF 30 FEET MORE OR LESS TO A POINT IN SAID SOUTHWESTERLY LINE, WHICH POINT IS DISTANT NORTHWESTERLY 30 FEET, MEASURED ALONG SAID SOUTHWESTERLY LINE, FROM THE MOST SOUTHERLY CORNER OF SAID LOT 49, SAID SOUTHWESTERLY LINE OF SAID LOT 49 BEING ALSO THE NORTHERLY LINE OF HEAD CIRCLE; THENCE NORTHERLY A DISTANCE OF 125 FEET MORE OR LESS IN A DIRECT LINE TO THE MOST NORTHERLY CORNER OF SAID LOT 49; THENCE SOUTHWESTERLY ALONG THE NORTHWESTERLY LINE OF SAID LOT 49 A DISTANCE OF 100 FEET TO THE POINT OF BEGINNING.