

FORM APPROVED COUNTY COUNSEL
 BY: GREGORY P. PRIAMOS DATE: 7/19/15

Departmental Concurrence

**SUBMITTAL TO THE BOARD OF SUPERVISORS
 COUNTY OF RIVERSIDE, STATE OF CALIFORNIA**

916A



FROM: TLMA – Transportation Department

SUBMITTAL DATE:
 July 29, 2015

SUBJECT: Agreement Between the Riverside County Regional Park and Open-Space District and the County of Riverside Transportation Department to Construct a 7.2-Mile Multi-Modal Urban Trail Along the Salt Creek Flood Control Channel, a Portion in the City of Hemet and a Portion in the City of Menifee. 3rd and 5th Districts; [\$6,987,598]; Federal 72.8%, Local 27.2%

RECOMMENDED MOTION: That the Board of Supervisors:

1. Approve the agreement between the Riverside County Transportation Department and the Riverside County Regional Park and Open-Space District for Salt Creek multi-purpose trail improvements in the City of Hemet and the City of Menifee; and
2. Authorize the Chairman of the Board to execute the same.

Patricia Romo

Patricia Romo
 Assistant Director of Transportation

Juan C. Perez

Juan C. Perez
 Director of Transportation and Land Management

FINANCIAL DATA	Current Fiscal Year:	Next Fiscal Year:	Total Cost:	Ongoing Cost:	POLICY/CONSENT (Per Exec. Office)
COST	\$ 268,500	\$ 6,719,098	\$ 6,987,598	\$ 0	Consent <input type="checkbox"/> Policy <input checked="" type="checkbox"/>
NET COUNTY COST	\$ 0	\$ 0	\$ 0	\$ 0	

SOURCE OF FUNDS: DIF Western Funds 30533 (5.7%), RCTC CMAQ (72.8%), and District Local Match (21.5%). There are no General Funds used in this project. **Budget Adjustment:** No
For Fiscal Year: 15/16 to 17/18

C.E.O. RECOMMENDATION:

APPROVE

BY: *Tina Grande*
 Tina Grande

County Executive Office Signature

MINUTES OF THE BOARD OF SUPERVISORS

- A-30
- 4/5 Vote
- Positions Added
- Change Order

Prev. Agn. Ref.: 07/03/12, Item 13-1a;
 11/04/14, Item 3-38

District: 3 and 5

Agenda Number:

3-27

SUBMITTAL TO THE BOARD OF SUPERVISORS, COUNTY OF RIVERSIDE, STATE OF CALIFORNIA

FORM 11: Agreement Between the Riverside County Regional Park and Open-Space District and the County of Riverside Transportation Department to Construct a 7.2-Mile Multi-Modal Urban Trail Along the Salt Creek Flood Control Channel, a Portion in the City of Hemet and a Portion in the City of Menifee. 3rd and 5th Districts; [\$6,987,598]; Federal 72.8%, Local 27.2%

DATE: July 29, 2015

PAGE: 2 of 3

BACKGROUND:

Summary

The Salt Creek Trail Parkway is a proposed 15.8 mile regional trail envisioned to serve western Riverside County (County) and will provide connections to cities, communities, commercial areas, schools, and recreational facilities from the City of Hemet through areas of unincorporated County, the City of Menifee, and the City of Canyon Lake. The trail is parallel and north of Newport Road and Domenigoni Parkway.

This trail is part of the Southern California Association of Governments (SCAG) 2035 Bikeway Network as outlined in the 2012-2014 Regional Transportation Plan (RTP) and meets the goals of increasing active transportation and decreasing bicycle and pedestrian fatalities.

On July 3, 2012 (Agenda Item 13-1a), the Board of Supervisors (Board) approved the allocation and use of \$400,000 in Development Impact Fee Western Riverside County Regional Multipurpose Trails (DIFWT) funds for costs associated with the trail expenses for Salt Creek Trail Parkway.

The Riverside County Transportation Department (Transportation Department) and the Riverside County Regional Park and Open-Space District are working cooperatively to develop 7.2 miles of the proposed 15.8 mile total trail length. The 7.2 mile project will be constructed in two concurrent phases. Phase 1 will span approximately four miles, from Antelope Road to Newport Road in the City of Menifee. Phase 2 will span 3.2 miles, from Sanderson Avenue to State Street in the City of Hemet. The trail will be located on the north side of the Salt Creek Flood Channel. The Salt Creek Parkway Phase 1 and Phase 2 projects were submitted to compete for funding in response to the Riverside County Transportation Commission (RCTC) 2013 Call for Projects. The Transportation Department partnered with the Riverside County Regional Parks and Open-Space District to secure these funds for the project. The County was successful in competing for the funds and was allocated \$5,090,000 in Congestion Mitigation and Air Quality (CMAQ) funds to be used for the construction of Phase 1 and Phase 2 of the Salt Creek Parkway Project on January 8, 2014, at the RCTC Executive Committee meeting.

On November 4, 2014 (Agenda Item 3-38) the Board approved a funding agreement with the Riverside County Transportation Commission, providing \$5,982,000 in construction funding for the Salt Creek Parkway. The Riverside County Regional Parks and Open-Space District will be contributing \$1,497,598 in funds as local match for the \$5,090,000 in Congestion Mitigation and Air Quality (CMAQ) funds that are being contributed by Riverside County Transportation Commission.

This agreement provides the terms and conditions under which the Riverside County Regional Park and Open-Space District and the Transportation Department will cooperatively develop, construct, and fund approximately 7.2 miles of the Salt Creek Trail Parkway.

The Salt Creek Trail Parkway project consists of constructing a paved, hard surface Class 1 Bikeway and a soft surface decomposed granite trail. The hard surface trail will have a width of 16 feet, allowing use by neighborhood electronic vehicles (NEV) as well as bicycles. The soft surface trail will have a width of 10-12 feet.

Construction of the Salt Creek Trail Parkway will provide an alternative means of transportation for residents of western Riverside County to commute to work, school, or play. The Trail passes through a number of housing and business developments in multiple cities, as well as providing access to local parks, schools, and recreational amenities. These include, but are not limited to, Winchester Elementary, Mc Sweeney Elementary, El Dorado Park, Brubaker Park, Hemet High School, Hemet Youth baseball fields, and Diamond Valley Lake Community Park.

SUBMITTAL TO THE BOARD OF SUPERVISORS, COUNTY OF RIVERSIDE, STATE OF CALIFORNIA

FORM 11: Agreement Between the Riverside County Regional Park and Open-Space District and the County of Riverside Transportation Department to Construct a 7.2-Mile Multi-Modal Urban Trail Along the Salt Creek Flood Control Channel, a Portion in the City of Hemet and a Portion in the City of Menifee. 3rd and 5th Districts; [\$6,987,598]; Federal 72.8%, Local 27.2%

DATE: July 29, 2015

PAGE: 3 of 3

The Salt Creek Trail Parkway will serve user groups with a wide range of interests ranging from pedestrians to racing cyclists, commuters, equestrians, and hikers.

The preparation of environmental documentation consistent with the California Environmental Quality Act (CEQA) and the National Environmental Policy Act (NEPA) is underway for the Salt Creek Trail. The County is the lead agency for CEQA and the California Department of Transportation (Caltrans) is the NEPA lead agency (based on delegation by the Federal Highway Administration). Technical studies assessing the project's impacts are currently being prepared. Public outreach meetings will be held during circulation of the environmental document.

Construction is expected to begin late 2016.

The submitted agreement has been approved as to form by County Counsel.

Project No.: C5-0068

Impact on Residents and Businesses

The Salt Creek Trail Parkway will provide the residents of the County a multipurpose recreational trail and a paved Class 1 Bike Path between the cities of Canyon Lake, Menifee, Hemet, and the unincorporated community of Winchester. It will provide the opportunity for expansion of local and regional trail systems, sidewalks, and bike path connections from the trail to surrounding communities, schools, commercial areas, and ultimately two key regional recreational facilities at Lake Skinner and Diamond Valley Lake. The trail will provide a new recreational amenity to the area and significantly improve quality-of-life for residents.

SUPPLEMENTAL:

Additional Fiscal Information

The preliminary engineering, environmental, design, right-of-way, construction, and construction engineering for the Salt Creek Multi-Purpose Trail Project is being funded by Federal Congestion Mitigation and Air Quality (CMAQ) Funds, DIFWT funds, and Riverside County Regional Park and Open-Space District funds. No Transportation Department or General Funds are being used for the project.

Salt Creek Multi-Purpose Trail Project Cost and Funding

Funding

	Funding Source for Project	Amount
1.	DIF Western Trail fund 30533	\$400,000
2.	Federal CMAQ Funds	\$5,090,000
3.	District Local Match	\$1,497,598
	Total	\$6,987,598

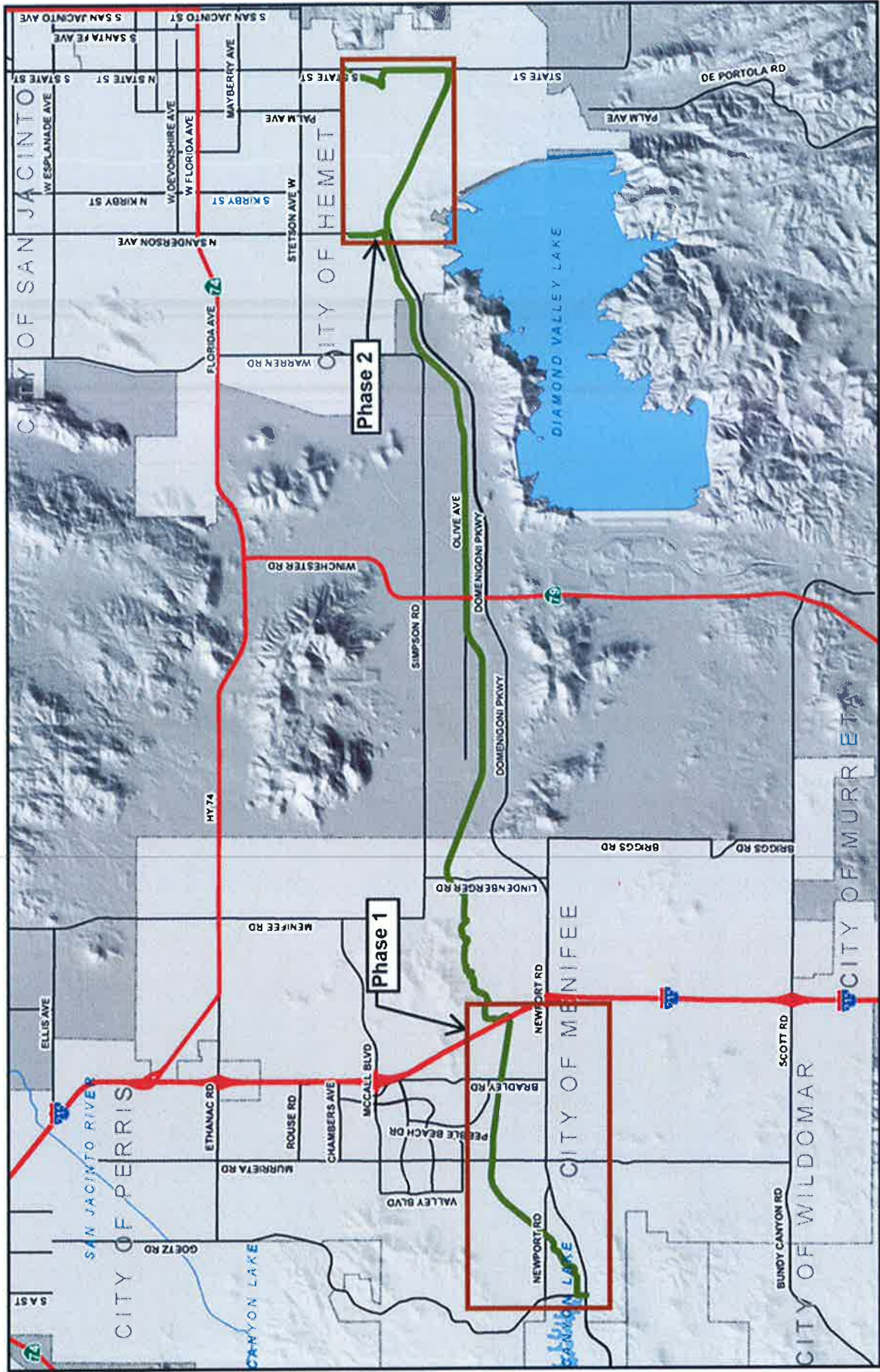
Contract History and Price Reasonableness

N/A

ATTACHMENTS

- Vicinity Map
- Agreement

Salt Creek Multi-Modal Urban Trail Project



1
2
3
4
5
6
7
8
9
10
11
12
13
14
15
16
17
18
19
20
21
22
23
24
25
26
27
28
29

AGREEMENT BY AND BETWEEN
RIVERSIDE COUNTY TRANSPORTATION DEPARTMENT
AND
RIVERSIDE COUNTY REGIONAL PARK AND OPEN SPACE DISTRICT
FOR
SALT CREEK MULTI-PURPOSE TRAIL IMPROVEMENTS

This Agreement is entered into this _____ day of _____, 2015, by and between Riverside County through its Transportation Department, (hereinafter "COUNTY"), and the Riverside County Regional Park and Open-Space District, (hereinafter "PARK DISTRICT") to define the terms and conditions under which the parties will cooperatively develop and construct proposed multi-purpose trail improvements located generally along the Salt Creek Flood Channel (hereinafter "SALT CREEK PARKWAY").

RECITALS

- A. SALT CREEK PARKWAY is ultimately envisioned as a 15.8-mile multi-modal urban trail that will span Western Riverside County from the City of Hemet through areas of unincorporated County, the City of Menifee and to the City of Canyon Lake. Improvements to the SALT CREEK PARKWAY will be performed in phases.
- B. The SALT CREEK PARKWAY is one of five major Regional Trails for western Riverside County designed to provide connections to cities, communities, commercial areas, schools and recreational facilities and serve as "backbone trail" for the County's Trail system. SALT CREEK PARKWAY is identified as such due to planned linkages with smaller trails as well as accessibility to area parks, homes, and business places.
- C. SALT CREEK PARKWAY is part of the SCAG 2035 Bikeway Network as outlined in the 2012-2014 RTP and meets the goals of increasing active transportation and decreasing bicycle and pedestrian fatalities.
- D. SALT CREEK PARKWAY will serve a dual purpose by paving a service road for Riverside County Flood Control and Water Conservation District.
- E. The SALT CREEK PARKWAY is located within several jurisdictional boundaries including the PARK DISTRICT, unincorporated Riverside County, Metropolitan Water District, City of Menifee, City of Hemet and State of California.
- F. On July 3, 2012 by minute order 13.1 the County Board of Supervisors and the Parks District Board of

1 Directors approved the allocation and use of funds from 30533 Development Impact Fee Western
2 Riverside County Regional Multipurpose Trails for costs associated with the trail expansion for Lake
3 Skinner, McCall Park – Hurkey Creek Park Connector Trail, and SALT CREEK PARKWAY.

4 G. On November 4, 2014 by minute order 3.38 the County Board of Supervisors approved an agreement
5 with the Riverside County Transportation Commission providing \$5,090,000 in construction funding for
6 the SALT CREEK PARKWAY. The COUNTY through its' Transportation Department possesses the
7 experience and qualified personnel required to fulfill the terms and conditions for receipt of these funds
8 and will be responsible for doing so.

9 H. PARK DISTRICT and COUNTY desire to work cooperatively to develop 7.2 miles of the SALT CREEK
10 PARKWAY, in two concurrent phases. Phase 1 will span approximately 4 miles, from Antelope Road to
11 Newport Road in the City of Menifee. Phase 2 will span 3.2 miles, from Sanderson Avenue to State Street
12 in the City of Hemet. SALT CREEK PARKWAY will be located on the north side of the Salt Creek Flood
13 Channel, parallel to the channel itself. A Vicinity/Project Map showing the project location and the two
14 phases identified above is provided herewith as "Exhibit A".

15 I. PARK DISTRICT has hired consultants and has initiated the environmental documentation work
16 necessary to obtain clearance for the SALT CREEK PARKWAY. PARK DISTRICT has also initiated the
17 preparation of engineered plans necessary to construct the SALT CREEK PARKWAY. PARK DISTRICT
18 and COUNTY desire to have the Transportation Department assume responsibility for completing the
19 environmental documentation requirements and preparation of the engineered plans including managing
20 and directing the consultants performing the work.

21 J. PARK DISTRICT has solicited support from COUNTY prior to execution of this Agreement. The
22 COUNTY through its Transportation Department has provided the requested support services including
23 survey, environmental and design services. PARK DISTRICT and COUNTY desire to reimburse
24 COUNTY for these support services provided by COUNTY commencing on or after July 1, 2014.

25 **AGREEMENT**

26 NOW THEREFORE, in consideration of the mutual promises contained herein, the parties hereto agree as
27 follows:

28 **SECTION 1 • PARK DISTRICT AGREES:**

- 29 1. To fund one hundred percent (100%) of the cost of preparing plans, specifications and estimates (PS&E),

1 preparing environmental documentation and obtaining environmental clearance, providing utility
2 coordination and relocation of impacted utilities, preparing right-of-way engineering documents,
3 performing property acquisition services and advertising, awarding and administering a public works
4 construction contract necessary to construct SALT CREEK PARKWAY improvements. The estimated
5 cost for SALT CREEK PARKWAY improvements is provided in Exhibit "B" attached hereto and
6 incorporated herein by reference. PARK DISTRICT agrees that should unforeseen circumstances arise
7 which result in an increase of any costs over those shown in Exhibit "B", PARK DISTRICT will in good
8 faith consider an amendment to this Agreement to include any such costs under this Agreement.

- 9 2. To provide oversight and support of the work necessary to complete the environmental documentation
10 and environmental clearances in accordance with the National Environmental Policy Act (NEPA), the
11 California Environmental Quality Act (CEQA) and other applicable Federal and State regulations.
- 12 3. To provide oversight and support of the work necessary to complete the preparation of detailed PS&E
13 documents for the SALT CREEK PARKWAY and to perform reviews at appropriate stages of
14 development.
- 15 4. To pay consultant invoices for services provided by consultants hired by the PARK DISTRICT and that
16 perform the services under the management and administration of COUNTY.
- 17 5. To pay within 45 days of receipt all invoices submitted by COUNTY for services performed by COUNTY
18 for the SALT CREEK PARKWAY.

19 **SECTION 2 • COUNTY AGREES:**

- 20 1. To complete the preparation of detailed PS&E documents for the SALT CREEK PARKWAY that have
21 been initiated by the PARK DISTRICT using consultants hired by the PARK DISTRICT. Final PS&E
22 documents shall be signed and stamped by a Civil Engineer registered in the State of California.
- 23 2. To complete the preparation of an environmental document initiated by the PARK DISTRICT using
24 consultants hired by the PARK DISTRICT and to obtain necessary environmental clearances in
25 accordance with the National Environmental Policy Act (NEPA), the California Environmental Quality Act
26 (CEQA) and other applicable Federal and State regulations.
- 27 3. To make written application to the PARK DISTRICT, Metropolitan Water District, City of Menifee, City of
28 Hemet and State of California for encroachment permits into each jurisdictions right-of-way authorizing
29 entry for the purposes of preparing the PS&E documents and constructing the SALT CREEK PARKWAY

- 1 improvements.
- 2 4. To review project documents and provide oversight and support services to PARK DISTRICT to assure
- 3 work is in compliance with regulatory and funding requirements.
- 4 5. To coordinate and facilitate all the environmental document and environmental technical studies
- 5 submittals through the State of California, Department of Transportation (CALTRANS).
- 6 6. To coordinate and facilitate all engineering document submittals through CALTRANS for work completed
- 7 within CALTRANS right-of-way.
- 8 7. To perform right-of-way acquisition services necessary for the construction SALT CREEK PARKWAY
- 9 improvements.
- 10 8. To coordinate and facilitate all federal funding document submittals through Caltrans Local Assistance.
- 11 9. To assist in identifying and locating all utility facilities within the SALT CREEK PARKWAY area as part of
- 12 its SALT CREEK PARKWAY design responsibility. If any existing public and/or private utility facilities
- 13 conflict with SALT CREEK PARKWAY construction, COUNTY shall make all necessary arrangements
- 14 with the owners of such facilities for their protection, relocation, or removal. All utility facilities shall be
- 15 identified on the SALT CREEK PARKWAY plans and specifications, and conflicting utilities shall be
- 16 denoted. COUNTY shall require the utility owner and/or its contractors performing the relocation work
- 17 within the jurisdiction of the PARK DISTRICT, Metropolitan Water District, City of Menifee, City of Hemet
- 18 or State of California to obtain a facility owners encroachment permit prior to the performance of said
- 19 relocation work. PARK DISTRICT and COUNTY shall coordinate and cooperate in the effort to establish
- 20 prior rights related to utility encroachments. In the case that any utility companies are determined to have
- 21 prior rights, the cost of relocating utilities shall be borne by PARK DISTRICT.
- 22 10. To advertise, award, and administer a public works contract for the construction of SALT CREEK
- 23 PARKWAY in accordance with all applicable federal, state or local statutes, ordinances, orders,
- 24 governmental requirements, laws or regulations, including but not limited to the local agency public
- 25 construction codes, California Labor Code, and California Public Contract Code.
- 26 11. To construct the SALT CREEK PARKWAY in accordance with approved PS&E documents.
- 27 12. To submit any contract change order that causes the construction contract to exceed 10% of the contract
- 28 bid amount for SALT CREEK PARKWAY improvements to PARK DISTRICT for review and approval prior
- 29 to final authorization by COUNTY.

1 13. To furnish PARK DISTRICT with redlined as-built plans and all contract records, including survey
2 documents, within ninety days following the completion and acceptance of the SALT CREEK PARKWAY
3 construction contract.

4 14. To furnish PARK DISTRICT a final reconciliation of project expenses within ninety (90) days following the
5 completion and acceptance of the SALT CREEK PARKWAY construction contract. If final construction
6 costs associated with the SALT CREEK PARKWAY improvements are in excess of payments received,
7 COUNTY shall include a final bill with the financial reconciliation. If final construction costs associated
8 with the SALT CREEK PARKWAY improvements are less than the payments received COUNTY shall
9 include a reimbursement for the difference with the financial reconciliation.

10 **SECTION 3 • IT IS MUTUALLY AGREED AS FOLLOWS:**

11 1. Environmental clearance may encompass the entire 15.8 miles of the project or may only include the
12 phases to be constructed under this Agreement. Both PARK DISTRICT and COUNTY shall concur on
13 the limits of the environmental clearance to be performed under this Agreement.

14 2. COUNTY shall not solicit construction bids until PARK DISTRICT has approved the SALT CREEK
15 PARKWAY PS&E documents.

16 3. The total cost of SALT CREEK PARKWAY is estimated to be \$6,987,598 as detailed in Exhibit "B".

17 4. COUNTY and PARK DISTRICT will work collectively to identify and obtain funding.

18 5. COUNTY is not obligated to proceed with construction unless adequate funding is identified and
19 appropriated.

20 6. If upon opening of bids for construction of the SALT CREEK PARKWAY, the bids indicate a cost overrun
21 of no more than 10% of the construction cost estimate as described in Exhibit "B" will occur, COUNTY
22 may award the contract.

23 7. If upon opening of bids, it is found that a cost overrun exceeding ten percent (10%) of the Total Estimate
24 Cost will occur, COUNTY and PARK DISTRICT shall endeavor to agree upon a course of action. If, after
25 thirty (30) calendar days from the date of bid opening, a course of action is not agreed upon, this
26 Agreement shall be deemed to be terminated by mutual consent and COUNTY shall be eligible for
27 reimbursement of expenses up to the point of termination.

28 8. Construction by COUNTY of improvements referred to herein which lie within PARK DISTRICT,
29 Metropolitan Water District, City of Menifee, City of Hemet and State of California right-of-way shall not be

1 commenced until an Encroachment Permit to COUNTY, or COUNTY's contractor, authorizing such work,
2 has been issued by the respective agency.

3 9. COUNTY shall cause COUNTY's contractor to maintain in force, until completion and acceptance of the
4 SALT CREEK PARKWAY construction contract, a policy of Commercial Liability Insurance, including
5 coverage of Bodily Injury Liability and Property Damage Liability, in the amount of \$2,000,000 minimum
6 single limit coverage, and a policy of Automobile Liability Insurance in the amount of \$1,000,000
7 minimum. Endorsements to each policy shall be required which name PARK DISTRICT, Metropolitan
8 Water District, City of Menifee, City of Hemet and State of California its officers, agents and employees,
9 as additionally insured. COUNTY shall also require COUNTY's contractor to maintain Worker's
10 Compensation Insurance.

11 10. Ownership and title to all materials, equipment, and appurtenances installed as part of this Agreement will
12 automatically be vested with the jurisdiction in which the improvements reside and no further agreement
13 will be necessary to transfer ownership.

14 11. PARK DISTRICT shall be responsible for any maintenance of the improvements provided by SALT
15 CREEK PARKWAY.

16 12. No alteration or variation of the terms of this Agreement shall be valid unless made in writing and signed
17 by all parties and no oral understanding or agreement not incorporated herein shall be binding on each
18 party hereto.

19 13. PARK DISTRICT and COUNTY shall retain or cause to be retained for audit for a period of three (3) years
20 from the date of final payment, all records and accounts relating to SALT CREEK PARKWAY.

21 14. Neither COUNTY nor any officer or employee thereof shall be responsible for any damage or liability
22 occurring by reason of anything done or omitted to be done by PARK DISTRICT under or in connection
23 with any work, authority or jurisdiction delegated to PARK DISTRICT under this Agreement. It is further
24 agreed that pursuant to Government Code Section 895.4, PARK DISTRICT shall fully indemnify and hold
25 COUNTY harmless from any liability imposed for injury (as defined by Government Code Section 810.8)
26 occurring by reason of anything done or omitted to be done by PARK DISTRICT under or in connection
27 with any work, authority or jurisdiction delegated to PARK DISTRICT under this Agreement.

28 15. Neither PARK DISTRICT nor any officer or employee thereof shall be responsible for any damage or
29 liability occurring by reason of anything done or omitted to be done by COUNTY under or in connection

1 with any work, authority or jurisdiction delegated to COUNTY under this Agreement. It is further agreed
2 that pursuant to Government Code Section 895.4, COUNTY shall fully indemnify and hold PARK
3 DISTRICT harmless from any liability imposed for injury (as defined by Government Code Section 810.8)
4 occurring by reason of anything done or omitted to be done by COUNTY under or in connection with any
5 work, authority or jurisdiction delegated to COUNTY under this Agreement.

6 16. This Agreement and the exhibits herein contain the entire agreement between the parties, and are
7 intended by the parties to completely state the agreement in full. Any agreement or representation
8 respecting the matters dealt with herein or the duties of any party in relation thereto, not expressly set
9 forth in this Agreement, is null and void.

10 17. Nothing in the provisions of Agreement is intended to create duties or obligations to or rights in third
11 parties not parties to this Agreement or affects the legal liability of either party to the Agreement by
12 imposing any standard of care with respect to the maintenance of trails different from the standard of care
13 imposed by law.

14 18. This Agreement shall be terminate 3 months after the filing of a Notice of Completion for the SALT
15 CREEK PARKWAY or upon mutual agreements of the parties.

16 19. All notices, demands, invoices, and written communications shall be in writing and delivered to the
17 following addresses or such other address as the PARTIES may designate:

18 To COUNTY: Riverside County Transportation and Land Management Agency,
19 Transportation Department
20 Attention: Juan C. Perez, Director of Transportation and Land Management
21 4080 Lemon Street, 8th Floor
22 Riverside, CA 92501
23 Phone: (951) 955-6740
24 Fax: (951) 955-3198

25 To PARK DISTRICT: Riverside County Regional Park and Open Space District
26 Attention: Scott Bangle, General Manager
27 4600 Crestmore Road
28 Jurupa Valley, CA 92509
29 Phone: (951) 955-4310

ARTICLE VIII • APPROVALS

COUNTY Approvals

RECOMMENDED FOR APPROVAL:

 Dated: 7/29/15

JUAN C. PEREZ

Director of Transportation and Land Management

APPROVED AS TO FORM:

GREGORY P. PRIAMOS, COUNTY COUNSEL

 Dated: 8/12/15
By Deputy

APPROVAL BY THE BOARD OF SUPERVISORS

_____ Dated: _____

PRINTED NAME

Chairman, Riverside County Board of Supervisors

ATTEST:

_____ Dated: _____

KECIA HARPER-IHEM

Clerk of the Board (SEAL)

PARK DISTRICT Approvals

ENGINEER:

_____ Dated: _____

SCOTT BANGLE

General Manager

APPROVED AS TO FORM:

GREGORY P. PRIAMOS, COUNTY COUNSEL

_____ Dated: _____

By Deputy

APPROVAL BY THE BOARD OF SUPERVISORS

_____ Dated: _____

PRINTED NAME

Chairman, Riverside County Board of Supervisors

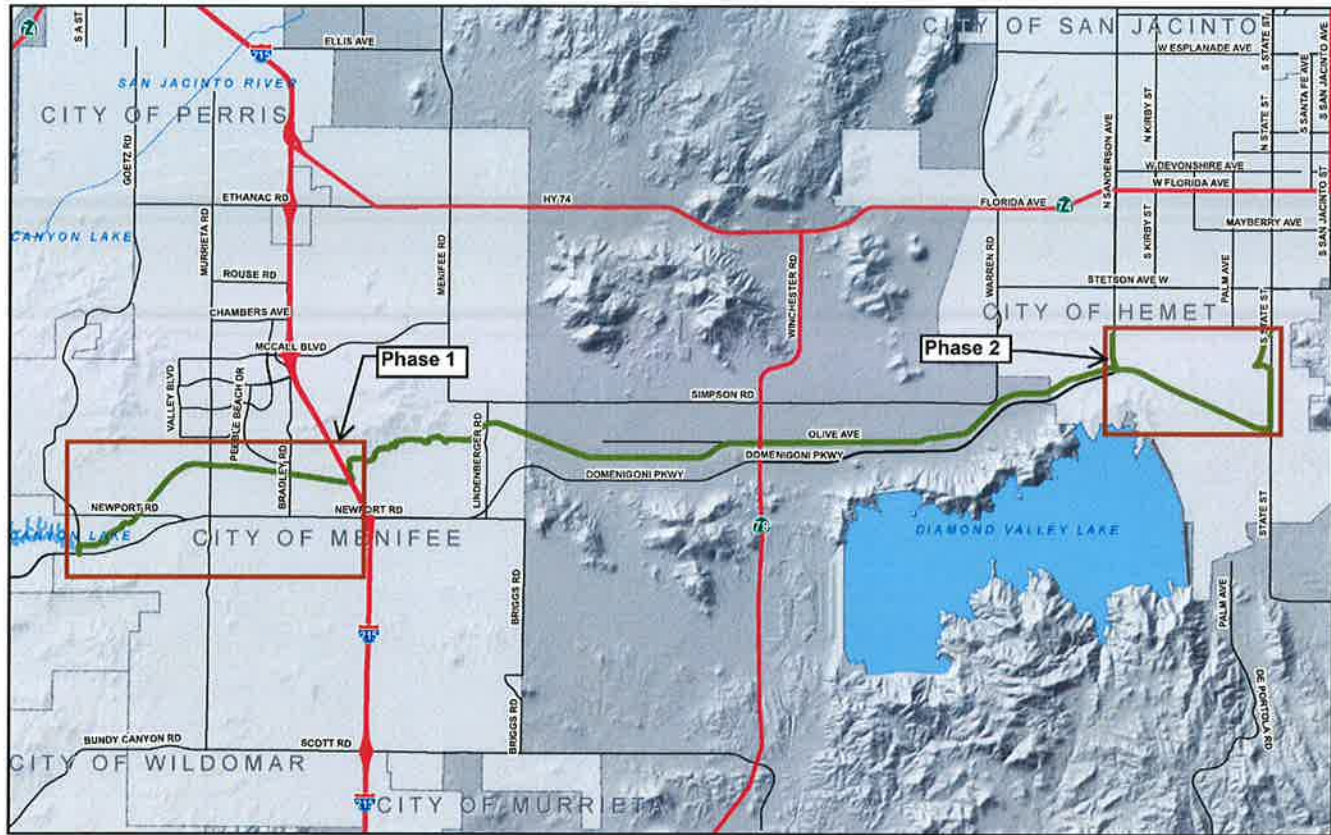
ATTEST:

_____ Dated: _____

KECIA HARPER-IHEM

Clerk of the Board (SEAL)

EXHIBIT A • VICINITY/SALT CREEK PARKWAY MAP



Salt Creek Parkway is shown in green.

EXHIBIT B • SALT CREEK PARKWAY BUDGET

Project Estimated Cost

	Project Development Activities	Project Estimated Costs			Total Estimated Project Cost
		Consultant/Contractor	Transportation Staff	Park Staff	
1.	Preliminary Survey		\$139,000		\$139,000
2.	Environmental	\$184,695	\$75,000	\$30,000	\$289,695
3.	Design	\$262,903	\$85,000	\$30,000	\$377,903
4.	Right of Way Engineering		\$139,000		\$139,000
5.	Right of Way Acquisition Soft Cost (If Needed)		\$50,000		\$50,000
6.	Construction	\$5,090,000			\$5,090,000
7.	Construction Engineering		\$509,000	\$10,000	\$519,000
8.	Construction Survey		\$383,000		\$383,000
	Total	\$5,537,598	\$1,380,000	\$70,000	\$6,987,598

Funding

	Funding Source for Project	Amount
1.	DIF Western Trail fund 30533	\$400,000
2.	Federal CMAQ Funds	\$5,090,000
3.	District Local Match	\$1,497,598
	Total	\$6,987,598.00