

PALEONTOLOGICAL RESOURCES ASSESSMENT REPORT

SAN JACINTO MASTER DRAINAGE PLAN

**In and near the City of San Jacinto
Riverside County, California**

For Submittal to:

Community Development Department
City of San Jacinto
595 S. San Jacinto Avenue, Building A
San Jacinto, CA 92583

Prepared for:

Felicia Griego
Albert A. Webb Associates
3788 McCray Street
Riverside, CA 92506

Prepared by:

Harry M. Quinn, Paleontologist/Geologist
Josh Smallwood, Report Writer
CRM TECH
1016 East Cooley Drive, Suite A/B
Colton, CA 92324

Michael Hogan, Principal Investigator
Bai "Tom" Tang, Principal Investigator

October 13, 2008

CRM TECH Contract #2225P
Approximately 103 Acres and 30 Linear Miles
USGS Lakeview and San Jacinto, Calif., 7.5' (1:24,000) Quadrangles
T4S R1-2W and T5S R1W, San Bernardino Base Meridian
And the San Jacinto Nuevo y Potrero and San Jacinto Viejo Land Grants

MANAGEMENT SUMMARY

Between March and September, 2008, at the request of Albert A. Webb Associates, CRM TECH performed a paleontological resource assessment of the area of potential effects (APE) for the proposed San Jacinto Master Drainage Plan Project in and near the City of San Jacinto, Riverside County, California. The APE for the proposed new drainage system consists of numerous segmented alignments for proposed drainage channels, pipelines, and culverts, as well as undeveloped or partially developed parcels for the construction of drainage basins. The study area for the drainage lines measures between 30 and 400 feet wide, and the overall length of the alignments totals approximately 30 miles. The six drainage basins will be constructed on parcels measuring between 5 and 40 acres each. The maximum vertical extent of ground disturbances within the APE is expected to be around 25 feet deep for the proposed drainage basins and 12 feet deep for the pipelines and channels.

The proposed drainage lines and basins lie mostly in the San Jacinto city limits, although a few scattered segments are located on unincorporated land to the north and in the City of Hemet to the south. The entire APE is located in Sections 25 and 36 of T4S R2W, portions of the San Jacinto Viejo land grant within T4-5S R1W, and a portion of the San Jacinto Nuevo y Potrero land grant in T4S R1W, San Bernardino Base Meridian.

The study is part of the environmental review process for the proposed project. The City of San Jacinto, as the Lead Agency for the project, required the study in compliance with the California Environmental Quality Act (CEQA). The purpose of the study is to provide the City with the necessary information and analysis to determine whether the proposed project would potentially disrupt or adversely affect any paleontological resources, as mandated by CEQA, and to design a paleontological salvage program for the project, if necessary.

In order to identify any paleontological resource localities that may exist in or near the APE and to assess the possibility for such resources to be encountered in future excavation and construction activities, CRM TECH initiated records searches at the San Bernardino County Museum and the Natural History Museum of Los Angeles County, conducted a literature search, and carried out a systematic field survey of the APE, in accordance with the guidelines of the Society of Vertebrate Paleontology.

Based on the findings from these research procedures, the proposed project's potential to impact paleontological resources is determined to be low within the surficial Recent alluvial sediments but high within the subsurface Pleistocene-age soils, which are known to lie, in many areas, at variable depths beneath the younger sediments. Therefore, periodic monitoring of earth-moving activities is recommended for any ground disturbances reaching beyond the depth of five feet. Continuous monitoring, along with a program to mitigate impacts to any paleontological resources that may be unearthed, will be needed if the older Pleistocene-age sediments are impacted by earth-moving operations.

TABLE OF CONTENTS

MANAGEMENT SUMMARY	i
INTRODUCTION	1
PROJECT DESCRIPTION.....	3
DEFINITION OF PALEONTOLOGICAL RESOURCES	3
PALEONTOLOGICAL SENSITIVITY CRITERIA	4
ENVIRONMENTAL SETTING.....	5
Geologic Setting.....	5
Current Natural Setting	5
METHODS AND PROCEDURES.....	5
Records Searches	5
Literature Review.....	6
Field Survey	6
RESULTS AND FINDINGS.....	8
Records Searches	8
Literature Review.....	9
Field Survey	9
CONCLUSION AND RECOMMENDATIONS	10
REFERENCES.....	12
APPENDIX 1: PERSONNEL QUALIFICATIONS	14
APPENDIX 2: RECORDS SEARCHES RESULTS	17

LIST OF FIGURES

Figure 1. Project vicinity	1
Figure 2. Area of potential effects.....	2
Figure 3. Typical landscapes along the project route.....	6
Figure 4. Survey coverage of the APE.....	7

INTRODUCTION

Between March and September, 2008, at the request of Albert A. Webb Associates, CRM TECH performed a paleontological resource assessment of the area of potential effects (APE) for the proposed San Jacinto Master Drainage Plan Project in and near the City of San Jacinto, Riverside County, California (Fig. 1). The APE for the proposed new drainage system consists of numerous segmented alignments for proposed drainage channels, pipelines, and culverts, as well as undeveloped or partially developed parcels for the construction of drainage basins. The study area for the drainage lines measures between 30 and 400 feet wide, and the overall length of the alignments totals approximately 30 miles. The six drainage basins will be constructed on parcels measuring between 5 and 40 acres each. The maximum vertical extent of ground disturbances within the APE is expected to be around 25 feet deep for the proposed drainage basins and 12 feet deep for the pipelines and channels.

The drainage lines and basins lie mostly in the San Jacinto city limits, although a few scattered segments are located on unincorporated land to the north and in the City of Hemet to the south. The entire APE is located in Sections 25 and 36 of T4S R2W, portions of the San Jacinto Viejo land grant within T4-5S R1W, and a portion of the San Jacinto Nuevo y Potrero land grant in T4S R1W, San Bernardino Base Meridian (Fig. 2).

The study is part of the environmental review process for the proposed project. The City of San Jacinto, as the Lead Agency for the project, required the study in compliance with the California Environmental Quality Act (CEQA; PRC §21000, et seq.). The purpose of the

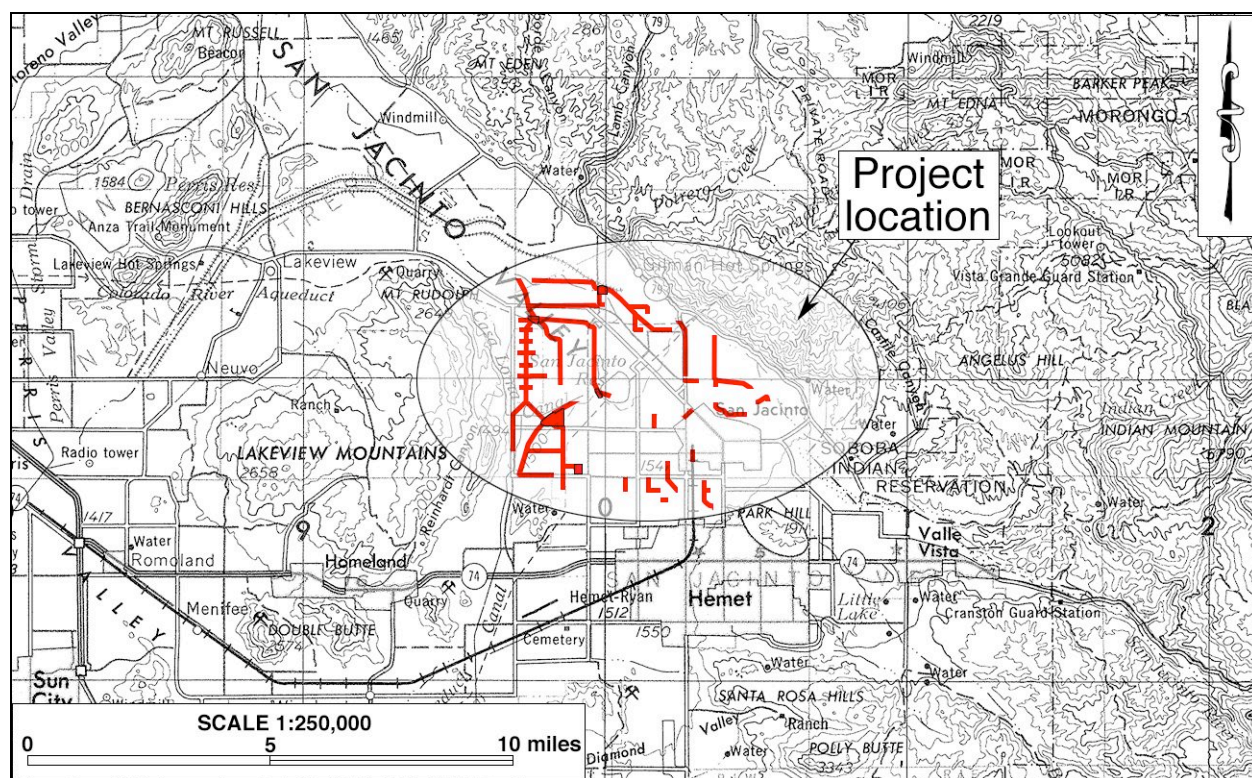


Figure 1. Project vicinity. (Based on USGS Santa Ana, Calif., 1:250,000 quadrangle [USGS 1979a])

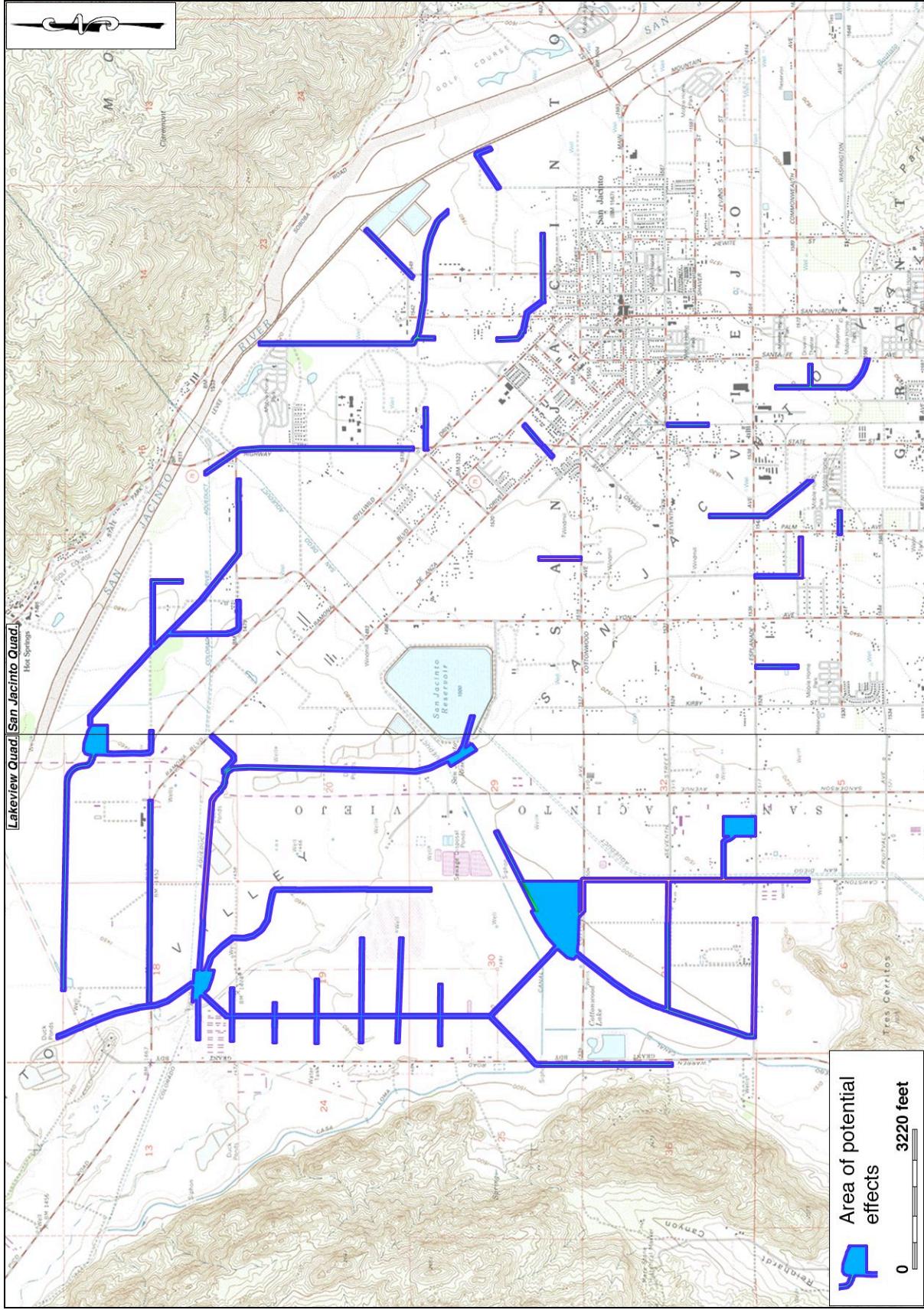


Figure 2. Area of potential effects. (Based on USGS Lakeview and San Jacinto, Calif., 1:24,000 quadrangles [USGS 1979b; 1996])

study is to provide the City with the necessary information and analysis to determine whether the proposed project would potentially disrupt or adversely affect any paleontological resources, as mandated by CEQA, and to design a paleontological salvage program for the project, if necessary.

In order to identify any paleontological resource localities that may exist in or near the APE and to assess the possibility for such resources to be encountered in future excavation and construction activities, CRM TECH initiated records searches at the San Bernardino County Museum and the Natural History Museum of Los Angeles County, conducted a literature search, and carried out a systematic field survey of the APE, in accordance with the guidelines of the Society of Vertebrate Paleontology. The following report is a complete account of the methods, results, and final conclusion of this study.

PROJECT DESCRIPTION

As discussed above, the APE for the proposed new drainage system consists of numerous segmented alignments for proposed earthen and concrete-lined drainage channels, reinforced concrete pipelines and box culverts, as well as the future sites of six drainage basins. The APE for the drainage lines measures between 30 and 400 feet wide, and the overall length of the alignments totals approximately 30 miles. Where the drainage line follows existing paved or gravel roads, construction will occur within the existing road right-of-way, which generally measures between 30 and 200 feet wide. In these areas, the project centerline may be in the roadway or along the outer edge of the roadway, often following existing earthen drainage ditches.

Where the project route crosses undeveloped land and agricultural fields, the width of the APE ranges from a minimum of 30 feet to a maximum of 400 feet, allowing enough workspace for the equipment to construct drainage channels or trench for pipelines. A maximum width of 350 feet will be necessary for earthen channels, including access roads, while concrete-lined channels will be 100 feet wide. The six proposed drainage basins will be constructed on parcels measuring between 5 and 40 acres each, scattered at different locations along the project route. The maximum vertical extent of ground disturbances within the APE is expected to be around 25 feet deep for the proposed drainage basins and 12 feet deep for the pipelines and channels.

DEFINITION OF PALEONTOLOGICAL RESOURCES

Paleontological resources constitute the remains of prehistoric life, exclusive of any human remains, and include the localities where fossils were collected as well as the sedimentary rock formations from which they were derived. The defining character of fossils or fossil deposits is their geologic age which is typically regarded as older than 10,000 years, the generally accepted temporal boundary marking the end of the last late Pleistocene glaciation and the beginning of the current Holocene epoch.

Paleontological resources are defined as the remains or traces of prehistoric plant and animal life. Fossil remains commonly include marine shells; the bones and teeth of fish, reptiles, and mammals; leaf assemblages; and petrified wood. Fossil traces include internal

and external molds (impressions) and casts created by these organisms. It is often the case that fossil resources generally occur only in areas of sedimentary rock (e.g., sandstone, siltstone, mudstone, claystone, or shale). Occasionally fossils will be exposed at the surface through the process of natural erosion or as a result of disturbances associated with man made excavations; however, they generally lay buried beneath the surficial soils. Thus, the absence of surface fossils does not preclude the possibility of their being present within subsurface deposits, while the presence of fossils at the surface is often a good indication that more remains may be found in the subsurface.

PALEONTOLOGICAL SENSITIVITY CRITERIA

The fossil record is unpredictable, and the preservation of organic remains is rare, requiring a particular sequence of events involving physical and biological factors. Skeletal tissue with a high percentage of mineral matter is the most readily preserved within the fossil record; soft tissues not intimately connected with the skeletal parts, however, are the least likely to be preserved. For this reason, the fossil record contains a biased selection not only of the types of organisms preserved but also of certain parts of the organisms themselves. As a consequence, paleontologists are unable to know with certainty, the quantity of fossils or the quality of their preservation that might be present within any given geologic unit.

The paleontological sensitivity for a geologic formation is determined by the potential for that formation to produce nonrenewable significant fossils. This determination is based on what fossil resources it has produced in the past at other nearby locations. A geologic formation is defined as a stratigraphic unit identified by its lithic characteristics (e.g., grain size, texture, color, mineral content) and stratigraphic position. There is a direct relationship between fossils and the geologic formations within which they are enclosed, and with sufficient knowledge of the geology and stratigraphy of a particular area and its paleontological resource potential, it is possible for paleontologists to reasonably determine its potential to contain significant nonrenewable vertebrate, invertebrate, or plant fossil remains.

The Society of Vertebrate Paleontology (1995:22-27) issued a set of standard guidelines intended to assist paleontologists to assess and mitigate any adverse effects/impacts to nonrenewable paleontological resources. The Society of Vertebrate Paleontology defined three potential categories of potential paleontological sensitivity for geologic units that might be impacted by the proposed project. These categories are high, low, and undetermined.

- **High:** Geologic units assigned to this category are considered to have a high potential for containing significant nonrenewable vertebrate, invertebrate, or plant fossils because fossils have been recovered nearby from the same geologic formation.
- **Low:** Geologic units are assigned to this category when few significant nonrenewable vertebrate, invertebrate, or plant fossils have been recovered from the same unit nearby.
- **Undetermined:** Geologic units are assigned to this category when there is little or no past history available to base a sensitivity assessment on.

ENVIRONMENTAL SETTING

GEOLOGIC SETTING

The APE lies in the northern portion of the Peninsular Ranges province, which is bounded on the north by the Transverse Ranges province, on the northeast by the Colorado Desert province, and on the west by the Pacific Ocean (Jenkins 1980:40-41; Harms 1996:150). The Peninsular Ranges province extends southward to the southern tip of Baja California (Jahns 1954). More specifically, the APE is located in the northern portion of the San Jacinto Valley, some distance from the outcropping of basement rocks that mark the northeastern and western edges of the valley.

The San Jacinto Valley is one of several tectonically controlled valleys within the valley and ridge systems within the Perris Structural Block (English 1926). These structurally depressed troughs are filled with sediments of upper Pliocene through Recent age (Mann 1955:Plate 1; Kennedy 1977:5), and the ridges are composed of plutonic igneous rocks, metasedimentary rocks, and late-stage intrusive dikes. The Perris Block was defined by English (1926) as a region between the San Jacinto and Elsinore-Chino fault zones. It is bounded on the north by the Cucamonga (San Gabriel) Fault and on the south by a vaguely delineated boundary near the southern end of the Temecula Valley (*ibid.*). This structural block is considered to have been active since Pliocene times (Woodford et al. 1971:3421).

CURRENT NATURAL SETTING

The APE lies to the southwest of the San Jacinto River, the main natural waterway in the San Jacinto Valley. The proposed drainage lines traverse across agricultural land, but also follow existing roadways and cross vacant or partially developed parcels through residential, commercial, and light industrial areas (Fig. 3). The drainage basins are located on undeveloped or partially developed parcels of land of irregular shapes and various sizes. Elevations along the project route range between 1,450 feet and 1,570 feet above mean sea level. The climate and environment of the APE and its surrounding region are typical of southern California's inland valleys, with temperatures reaching over 100 degrees in summer, and dipping to near freezing in winter. Vegetation in the non-agricultural and undeveloped areas consists mainly of non-native grasses, weeds, and brush, and the soils are a sandy loam typical of the San Jacinto Valley.

METHODS AND PROCEDURES

RECORDS SEARCHES

The records search service was provided by the San Bernardino County Museum in Redlands and the Natural History Museum of Los Angeles County in Los Angeles. These institutions maintain files of regional paleontological localities as well as supporting maps and documents. The records search results were used to identify any known paleontological localities within the APE or in the general vicinity.



Figure 3. Typical landscapes along the project route. *Clockwise from upper left:* gravel-paved segment of Cawston Avenue; existing earthen drainage ditch along east side of State Street; vacant field; paved right-of-way near Mt. San Jacinto Community College. (Photos taken during field survey in July, 2008)

LITERATURE REVIEW

In addition to the records searches, a literature search was conducted using materials in the CRM TECH library, including unpublished reports produced during surveys of other properties in the area, and the personal library of CRM TECH geologist/paleontologist Harry M. Quinn, California Registered Geologist #3477 (see App. 1 for qualifications).

FIELD SURVEY

The survey of the APE was conducted on July 15-18, 2008, by CRM TECH paleontological surveyors Daniel Ballester and Nina Gallardo, under the direction of Harry M. Quinn. Nearly half of the APE, including many of the proposed drainage lines and all six proposed drainage basin locations, could not be surveyed due to restricted access (Fig. 4). The balance of the APE was surveyed at either an intensive or a reconnaissance level to adequately cover the centerline and buffer distance of each drainage line segment. Those alignments that follow existing road right-of-ways, due to the highly disturbed nature of the built environment, were surveyed at a reconnaissance level by driving along the route.

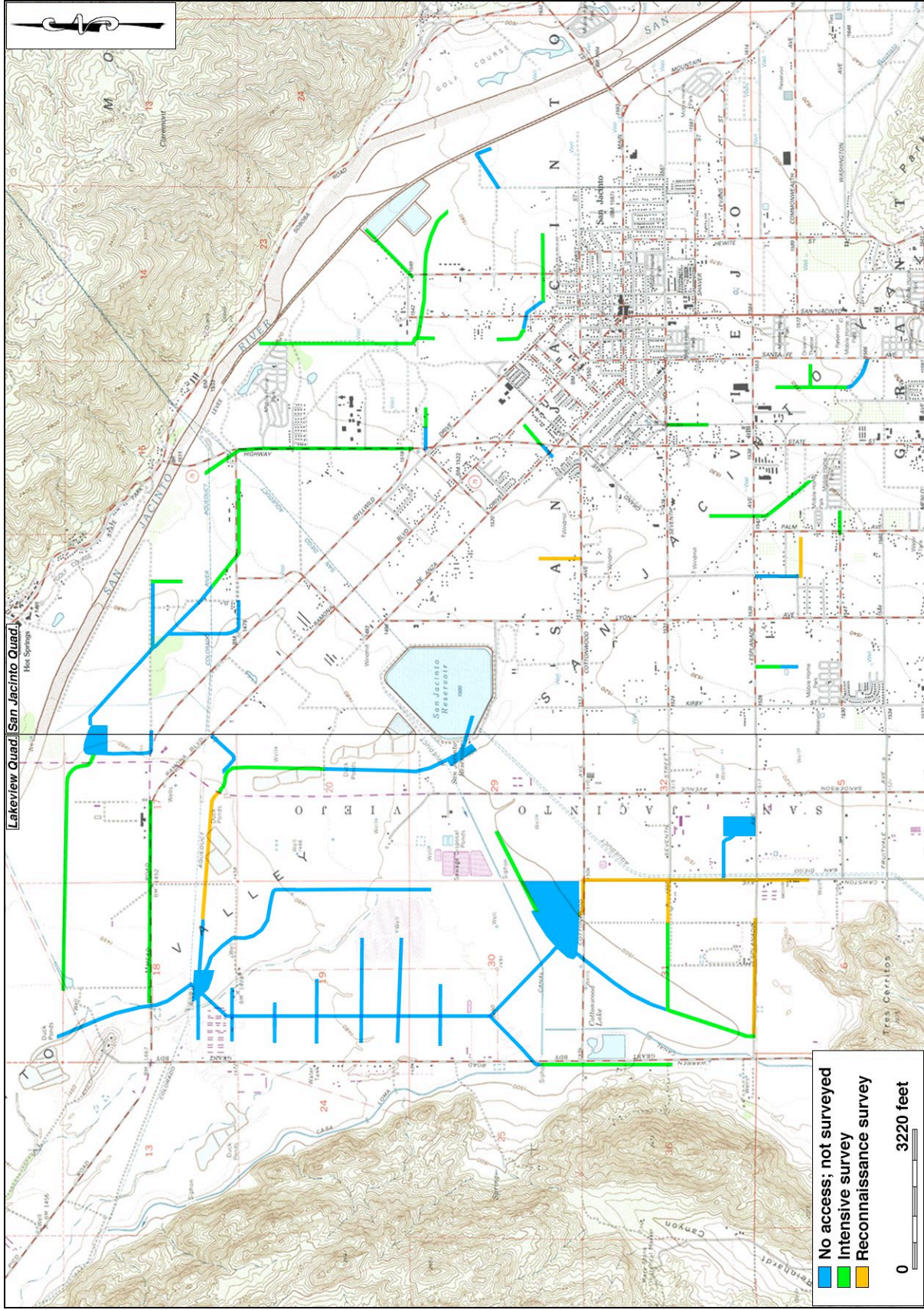


Figure 4. Survey coverage of the APE.

Undeveloped fields and other portions of the APE with permissible access were surveyed on-foot at an intensive level by walking parallel transects along the project route at 10 to 15-meter (approx. 30-50-foot) intervals, covering a corridor that was wide enough to encompass the full width of the APE. In this manner, the portions of the APE that were surveyed were systematically and carefully examined to determine the soil types, to verify the geological formations, and to look for any indications of paleontological remains. Ground visibility was excellent (90-100%) in most of the undeveloped areas due to sparse vegetation, but poor (0-40%) in developed areas due to the presence of landscaping and pavement.

RESULTS AND FINDINGS

RECORDS SEARCHES

The Natural History Museum of Los Angeles County (NHMLAC) and the San Bernardino County Museum (SBCM) found no known paleontological localities within the boundaries of the APE or in the general vicinity (McLeod 2008; Scott 2008; see App. 2). The NHMLAC reports one vertebrate fossil locality, LACM 7261, found at the Skinner Reservoir to the south-southwest of the APE. At that location, fossil specimens of mammoth, *Mammuthus* sp., and bison, *Bison* sp., were recovered from Pleistocene-age sedimentary deposits similar to those that may be encountered in the subsurface of the APE.

The San Bernardino County Museum considers the Recent (Holocene) alluvium of the surface, consisting of wash deposits of the San Jacinto River and Holocene-age alluvium, to be unlikely to contain significant nonrenewable paleontological resources, and so assigned it a low paleontologic sensitivity (Scott 2008). However, the Holocene alluvium is likely to form a thin veneer overlying subsurface Pleistocene-age sediments, which have a high potential to contain significant fossil resources (*ibid.*). The Natural History Museum of Los Angeles County also notes the potential for significant vertebrate fossil remains to be encountered within the underlying older Pleistocene-age sediments (McLeod 2008).

The NHMLAC notes that excavations in the shallow surface sediments found in the APE are not likely to encounter any fossil remains (McLeod 2008). However, deeper excavations in the older Quaternary deposits within the project boundaries may well encounter significant fossil remains (*ibid.*). Scott (2008) points out that it is not known at what depths such fossil-bearing sediments might be encountered, but it is expected that Pleistocene-age sediments may well be encountered during excavations in excess of five feet below the existing ground surface.

In other parts of Riverside County and the Inland Empire, Pleistocene-age alluvial sediments, like those that may be encountered in the subsurface of the APE, have yielded significant fossils of extinct animals from the past "Ice Ages" (SBCM 2008). Fossils recovered from these Pleistocene-age sediments include extinct taxa such as mammoths, mastodons, ground sloths, dire wolves, sabre-toothed cats, horses, camels, and bison, and plant fossils (*ibid.*). Based on these findings, both museums assigned the older Quaternary (Pleistocene-age) sediments of the APE a high paleontological sensitivity.

LITERATURE REVIEW

Dudley (1935:Geologic Map) mapped the site geology as entirely alluvium of Quaternary age. Jahns (1954:Plate 3) mapped the surface geology as **Qal**, or "alluvium; alluvial-fans, flood-plain, swamp, lake, and sand dune" of Recent age. Rogers (1965) mapped the surface geology as **Qal**, or alluvium of Recent (Holocene) age. It is the same material that he mapped as the surface material in the Domenigoni Valley, several miles to the south, where many vertebrate fossil remains were found (Springer and Scott 1994:47A; Springer, et al. 1998:79A; Springer et al. 1999:77A). Many of those fossil remains, however, were discovered as a result of the deep excavations required for the reservoir and dam constructions at that location.

Fraser (1931:Geologic Map) mapped the easternmost portion of the APE as **Qal**, or alluvium of Quaternary age (mainly Recent). Morton (1972) mapped the surface geology in the western portion of the APE as **Qal** (alluvium of Holocene age) and **Qal1** (silty alluvium of Holocene-age). The **Qal** seems to conform more to the alluvial fan deposits and the **Qal1** to present-day San Jacinto River bed and valley sediments.

Dibblee (2003a; 2003b) mapped the APE as mainly **Qa**, or alluvial sediments of Holocene-age, with some **Qg**, or alluvial sand and gravel of major stream channels. The **Qg** is associated with the present-day San Jacinto River bed. He indicates the **Qa** rests directly on top of the **Qoa**, or older alluvial sediments of Pleistocene age, with variable thickness throughout the mapped region (*ibid.*).

Knecht (1971:Map Sheets 78, 90, 91) mapped the surface soils in the APE as **DgB**, **DnB**, **DoA**, **DrA**, **GoB**, **GsB**, **GwA**, and **RsC**. The **DgB**, **DnB**, **DoA**, and **DrA** soils belong to the Dello Series, specifically the Dello loamy sand, 0 to 5 percent slopes; the Dello loamy sand, gravelly substratum, 0 to 5 percent slopes; the Dello loamy fine sand, 0 to 2 percent slopes; and Dello loamy fine sand, gravelly substratum, 0 to 2 percent slopes, respectively (*ibid.*:28). These soils form on alluvial fans and flood plains (*ibid.*:27).

The **GoB**, **GsB**, and **GwA** soils belong to the Grangeville Series, specifically the Grangeville loamy fine sand, drained, 0 to 5 percent slopes; the Grangeville sandy loam, sandy substratum, drained, saline-alkali, 0 to 5 percent slopes; and the Grangeville fine sandy loam, loamy substratum, drained, 0 to 2 percent slopes, respectively (*ibid.*:37-38). These soils develop in moderately to poorly drained areas on alluvial fans and flood plains (*ibid.*:36). The **RsC** soils belong to the Riverwash Series and are described as sandy, gravelly, or cobbled areas lying within major streams and larger creeks typically found within valley fills and on alluvial fans (*ibid.*:55).

FIELD SURVEY

As discussed above, nearly half of the APE could not be accessed during the field survey, and so were not surveyed during this study (Fig. 4). During the field survey of the balance of the APE, no fossils or potentially fossiliferous sediments were encountered. The surface soils within the majority of the APE have been disturbed in the past by agricultural use and by various development activities, and, therefore, no intact paleontological deposits are likely to survive in the surface soils and none were observed.

CONCLUSION AND RECOMMENDATIONS

CEQA Appendix G provides that "a project may be deemed to have a significant effect on the environment if it will ... disrupt or adversely affect a ... paleontological site except as a part of a scientific study." The present study, conducted in compliance with this provision, is designed to identify any significant, non-renewable paleontological resources that may exist within or adjacent to the APE, and to assess the possibility for such resources to be encountered in future excavation and construction activities.

The results of the various avenues of research completed during this study indicate that the surficial soils in the APE consist of alluvium of Recent (Holocene) age and have a low potential for significant nonrenewable fossil remains. However, these younger alluvial sediments are of variable thickness and are known to rest directly on top of older Pleistocene-age sediments, which have a high potential to yield significant vertebrate fossil remains. Therefore, the proposed project's potential to impact paleontological resources is determined to be low in the surficial alluvial sediments but high in the subsurface Pleistocene-age soils.

The thickness of the younger sediments may be determined from the geotechnical soil borings, should they be available at the onset of grading or trenching activities. Previous studies in the area reveal that fossils recovered from similar sediments have been deeper than 10 feet, but that some can be found as shallow as three feet deep, especially nearer the base of hills (Irish et al. 2003:18).

Based on these findings, periodic monitoring of earth-moving activities is recommended for any ground-disturbing activities reaching beyond the depth of five feet. Continuous monitoring, along with a program to mitigate impacts to any paleontological resources that may be unearthed, will be needed if the older Pleistocene-age sediments are impacted by earth-moving operations. The program should be developed in accordance with the provisions of CEQA and the proposed guidelines of the society of Vertebrate Paleontology, and should include, but not be limited to, the following:

- Monitoring of excavation in areas identified as likely to contain paleontologic resources by a qualified paleontologic monitor. Continuous monitoring should be restricted to undisturbed older alluvium, which might be present below the surface. The monitor should be prepared to quickly salvage fossils as they are unearthed to avoid construction delays. The monitor should also remove samples of sediments that are likely to contain the remains of small fossil invertebrates and vertebrates. The monitor must have the authority to temporarily halt or divert grading equipment to allow for removal of abundant or large specimens.
- Preparation and stabilization of all recovered specimens for identification and permanent preservation, including washing of sediment samples to recover small invertebrates and vertebrates.
- Identification and curation of specimens into an established accredited museum repository with permanent retrievable paleontologic storage. Mitigation of adverse impacts to significant paleontologic resources is not complete until the curation process has been fully completed and documented.
- Preparation of a report of findings with an appended itemized inventory of specimens. The submittal of the report to the Lead Agency and the curation of recovered specimens

into an established, accredited museum repository would signify the completion of the mitigation program.

REFERENCES

Dibblee, T. W., Jr.

2003a Geologic Map of the Perris Quadrangle, Riverside County, California. Dibblee Geology Center Map #DF-115. Santa Barbara, California.

2003b Geologic Map of the San Jacinto Quadrangle, Riverside County, California. Dibblee Geology Center Map #DF-116. Santa Barbara, California.

Dudley, Paul H.

1935 Geology of a Portion of the Perris Block, Southern California. In *State Mineralogist's Report XXXI. California Journal of Mines and Geology* 31(4):487-506.

English, W. A.

1926 *Geology and Oil Resources of the Puente Hills Region, Southern California*. U.S. Geological Survey Bulletin 146. Washington D.C.

Fraser, Donald McCoy

1931 Geology of the San Jacinto Quadrangle South of San Geronio Pass, California. In *Report XXVII of the State Mineralogist*; pp. 494-540. San Francisco, California.

Harms, Nancy S.

1996 *A Precollegiate Teachers Guide to California Geomorphic/Physiographic Provinces*. Far West Section, National Association of Geoscience Teachers, Concord, California.

Irish, Leslie Nay, Anna M. Hoover, Kristie R. Blevins, and Hugh M. Wagner

2003 Phase I Archaeological and Paleontological Survey Report for Tract 31537, APN 462-090-001-6, 462-110-001 to -007, 462-120-001 to -006, -012, and -014 to -016, Winchester, County of Riverside, California. Report prepared by L & L Environmental, Inc., Corona, California.

Jahns, R. H.

1954 Geology of the Peninsular Range Province, Southern California and Baja California. In R. H. Jahns (ed.): *Geology of Southern California*; Chapter II. California Division of Mines Bulletin 170, Part 3. San Francisco, California.

Jenkins, Olaf P.

1980 Geomorphic Provinces Map of California. *California Geology* 32(2):40-41. California Division of Mines and Geology Publication. Sacramento, California.

Kennedy, Michael P.

1977 *Recency and Character of Faulting Along the Elsinore Fault Zone in Southern Riverside County, California*. California Division of Mines and Geology, Special Report 131, Sacramento, California.

Knecht, Arnold A.

1971 *Soil Survey of Western Riverside Area, California*. U.S. Department of Agriculture, Soil Conservation Service, Washington, D.C.

- Mann, John F., Jr.,
1955 *Geology of a Portion of the Elsinore Fault Zone, California*. California Division of Mines, Special Report 43, San Francisco, California.
- McLeod, Samuel A.
2008 Paleontological Resources for the Proposed San Jacinto Master Drainage Plan, CRM TECH #2225-P, in the Cities of Hemet and San Jacinto, Riverside County, project area. Records review letter report prepared by the Natural History Museum of Los Angeles County, Los Angeles, California.
- Morton, Douglas M.
1972 *Geology of the Lakeview-Perris Quadrangles, Riverside County, California*; Map Sheet 19. California Division of Mines and Geology, Sacramento, California.
- Rogers, Thomas H.
1965 Geological Map of California, Santa Ana Sheet (1:250,000). California Division of Mines and Geology, Sacramento, California.
- Scott, Eric
2008 Paleontology Literature and Records Review, San Jacinto Master Drainage Plan, Riverside County, California. Records review letter report prepared by the San Bernardino County Museum, Section of Geological Sciences, Redlands, California.
- Society of Vertebrate Paleontology
1995 Assessment and Mitigation of Adverse Impacts to Nonrenewable Paleontologic Resources: Standard Guidelines. Society of Vertebrate Paleontology News Bulletin, v. 163, pp. 22-27, Chicago, Illinois.
- Springer, Kathleen B., and Eric Scott
1994 First Record of Late Pleistocene Vertebrates from the Domenigoni Valley, Riverside County, California. Report prepared by the San Bernardino County Museum, Section of Geological Sciences, Redlands, California.
- Springer, Kathleen B., Eric Scott, and Lyndon K. Murray
1998 Partial Skeleton of a Large Individual of *Mammuth americanus* from the Domenigoni Valley, California. *Journal of Vertebrate Paleontology* 18(3):78-A.
- Springer, Kathleen B., Eric Scott, J. Christopher Sagebiel, and Kimberly Scott
1999 A Late Pleistocene Lake-Edge Vertebrate Assemblage from the Diamond Valley, Riverside County, California. *Journal of Vertebrate Paleontology* 19(3):77-A.
- USGS (United States Geological Survey, U.S. Department of the Interior)
1979a Map: Santa Ana, Calif. (1:250,000); 1959 edition revised.
1979b Map: Lakeview, Calif. (7.5', 1:24,000); 1967 edition photorevised in 1967.
1996 Map: San Jacinto, Calif. (7.5', 1:24,000); 1953 edition photorevised in 1994.
- Woodford, Alfred O., John S. Shelton, Donald O. Doehring, and Richard K. Morton
1971 Pliocene-Pleistocene History of the Perris Block, Southern California. *Geological Society of America*, 82(12):3421-3448.

APPENDIX 1
PERSONNEL QUALIFICATIONS

PROJECT GEOLOGIST/PALEONTOLOGIST
Harry M. Quinn, M.S.

Education

1968 M.S., Geology, University of Southern California, Los Angeles, California.
1964 B. S, Geology, Long Beach State College, Long Beach.
1962 A.A., Los Angeles Harbor College, Wilmington North Palm Springs, California.

- Graduate work oriented toward invertebrate paleontology; M.S. thesis completed as a stratigraphic paleontology project on the Precambrian and Lower Cambrian rocks of Eastern California.

Professional Experience

2000-Present Project/Field Paleontologist, CRM TECH, Riverside, California.
1998-Present Project/Field Archaeologist, CRM TECH, Riverside, California.
1992-1998 Independent Geological/Geoarchaeological/Environmental Consultant, Pinyon Pines, California.
1994-1996 Environmental Geologist, E.C E.S., Inc, Redlands, California.
1988-1992 Project Geologist/Director of Environmental Services, STE, San Bernardino, California.
1987-1988 Senior Geologist, Jirsa Environmental Services, Norco, California.
1986 Consulting Petroleum Geologist, LOCO Exploration, Inc. Aurora, Colorado.
1978-1986 Senior Exploration Geologist, Tenneco Oil E & P, Englewood, Colorado.
1965-1978 Exploration and Development Geologist, Texaco, Inc., Los Angeles, California.

Previous Work Experience in Paleontology

1969-73 Attended Texaco company-wide seminars designed to acquaint all paleontological laboratories with the capability of one another and the procedures of mutual assistance in solving correlation and paleo-environmental reconstruction problems.
1967-1968 Attended Texaco seminars on Carboniferous coral zonation techniques and Carboniferous smaller foraminifera zonation techniques for Alaska and Nevada.
1966-1972, 1974, 1975 Conducted stratigraphic section measuring and field paleontological identification in Alaska for stratigraphic controls. Pursued more detailed fossil identification in the paleontological laboratory to establish closer stratigraphic controls, mainly with Paleozoic and Mesozoic rocks and some Tertiary rocks, including both megafossil and microfossil identification, as well as fossil plant identification.
1965 Conducted stratigraphic section measuring and field paleontological identification in Nevada for stratigraphic controls. Pursued more detailed fossil identification in the paleontological laboratory to establish closer stratigraphic controls, mainly with Paleozoic rocks and some Mesozoic and Tertiary rocks. The Tertiary work included identification of ostracods from the Humboldt and Sheep Pass Formations and vertebrate and plant remains from Miocene alluvial sediments.

Memberships

Society of Vertebrate Paleontology; American Association of Petroleum Geologists; Canadian Society of Petroleum Geologists; Rocky Mountain Association of Geologists, Pacific Section; Society of Economic Paleontologists and Mineralogists; San Bernardino County Museum.

Publications in Geology

Five publications in Geology concerning an oil field study, a ground water and earthquake study, a report on the geology of the Santa Rosa Mountain area, and papers on vertebrate and invertebrate Holocene Lake Cahuilla faunas.

PALEONTOLOGICAL SURVEYOR/FIELD DIRECTOR
Daniel Ballester, B.A.

Education

- 1998 B.A., Anthropology, California State University, San Bernardino.
1997 Archaeological Field School, University of Las Vegas and University of California, Riverside.
1994 University of Puerto Rico, Rio Piedras, Puerto Rico.
- Cross-trained in paleontological field procedures and identifications by CRM TECH Geologist/Paleontologist Harry M. Quinn.

Professional Experience

- 2002- Field Director, CRM TECH, Riverside/Colton, California.
• Report writing, site record preparation, and supervisory responsibilities over all aspects of fieldwork and field crew.
- 1999-2002 Project Archaeologist/Field Paleontologist, CRM TECH, Riverside, California.
• Survey, testing, data recovery, monitoring, and mapping.
- 1998-1999 Field Crew, K.E.A. Environmental, San Diego, California.
• Two and a half months of excavations on Topomai village site, Marine Corp Air Station, Camp Pendleton.
- 1998 Field Crew, A.S.M. Affiliates, Encinitas, California.
• Two weeks of excavations on a site on Red Beach, Camp Pendleton, and two weeks of survey in Camp Pendleton, Otay Mesa, and Encinitas.
- 1998 Field Crew, Archaeological Research Unit, University of California, Riverside.
• Two weeks of survey in Anza Borrego Desert State Park and Eureka Valley, Death Valley National Park.

APPENDIX 2

RECORDS SEARCHES RESULTS



EDR® Environmental
Data Resources Inc

EDR DataMap® Corridor Study

**San Jacinto MDP Update
San Jacinto, CA 92582**

July 18, 2007

Inquiry number 01981156.1r

The Standard in Environmental Risk Information

440 Wheelers Farms Road
Milford, Connecticut 06461

Nationwide Customer Service

Telephone: 1-800-352-0050
Fax: 1-800-231-6802
Internet: www.edrnet.com

Thank you for your business.
Please contact EDR at 1-800-352-0050
with any questions or comments.

Disclaimer - Copyright and Trademark Notice

This Report contains certain information obtained from a variety of public and other sources reasonably available to Environmental Data Resources, Inc. It cannot be concluded from this Report that coverage information for the target and surrounding properties does not exist from other sources. **NO WARRANTY EXPRESSED OR IMPLIED, IS MADE WHATSOEVER IN CONNECTION WITH THIS REPORT. ENVIRONMENTAL DATA RESOURCES, INC. SPECIFICALLY DISCLAIMS THE MAKING OF ANY SUCH WARRANTIES, INCLUDING WITHOUT LIMITATION, MERCHANTABILITY OR FITNESS FOR A PARTICULAR USE OR PURPOSE. ALL RISK IS ASSUMED BY THE USER. IN NO EVENT SHALL ENVIRONMENTAL DATA RESOURCES, INC. BE LIABLE TO ANYONE, WHETHER ARISING OUT OF ERRORS OR OMISSIONS, NEGLIGENCE, ACCIDENT OR ANY OTHER CAUSE, FOR ANY LOSS OF DAMAGE, INCLUDING, WITHOUT LIMITATION, SPECIAL, INCIDENTAL, CONSEQUENTIAL, OR EXEMPLARY DAMAGES. ANY LIABILITY ON THE PART OF ENVIRONMENTAL DATA RESOURCES, INC. IS STRICTLY LIMITED TO A REFUND OF THE AMOUNT PAID FOR THIS REPORT.** Purchaser accepts this Report "AS IS". Any analyses, estimates, ratings, environmental risk levels or risk codes provided in this Report are provided for illustrative purposes only, and are not intended to provide, nor should they be interpreted as providing any facts regarding, or prediction or forecast of, any environmental risk for any property. Only a Phase I Environmental Site Assessment performed by an environmental professional can provide information regarding the environmental risk for any property. Additionally, the information provided in this Report is not to be construed as legal advice.

Copyright 2006 by Environmental Data Resources, Inc. All rights reserved. Reproduction in any media or format, in whole or in part, of any report or map of Environmental Data Resources, Inc., or its affiliates, is prohibited without prior written permission.

EDR and its logos (including Sanborn and Sanborn Map) are trademarks of Environmental Data Resources, Inc. or its affiliates. All other trademarks used herein are the property of their respective owners.

EXECUTIVE SUMMARY

A search of available environmental records was conducted by Environmental Data Resources, Inc. (EDR).

TARGET PROPERTY INFORMATION

ADDRESS

SAN JACINTO, CA 92582
SAN JACINTO, CA 92582

DATABASES WITH NO MAPPED SITES

No mapped sites were found in EDR's search of available ("reasonably ascertainable ") government records within the requested search area for the following databases:

FEDERAL RECORDS

NPL	National Priority List
Proposed NPL	Proposed National Priority List Sites
Delisted NPL	National Priority List Deletions
NPL LIENS	Federal Superfund Liens
CERCLIS	Comprehensive Environmental Response, Compensation, and Liability Information System
CORRACTS	Corrective Action Report
RCRA-TSDF	Resource Conservation and Recovery Act Information
ERNS	Emergency Response Notification System
HMIRS	Hazardous Materials Information Reporting System
US ENG CONTROLS	Engineering Controls Sites List
US INST CONTROL	Sites with Institutional Controls
DOD	Department of Defense Sites
FUDS	Formerly Used Defense Sites
US BROWNFIELDS	A Listing of Brownfields Sites
CONSENT	Superfund (CERCLA) Consent Decrees
ROD	Records Of Decision
UMTRA	Uranium Mill Tailings Sites
ODI	Open Dump Inventory
TRIS	Toxic Chemical Release Inventory System
TSCA	Toxic Substances Control Act
FTTS	FIFRA/ TSCA Tracking System - FIFRA (Federal Insecticide, Fungicide, & Rodenticide Act)/TSCA (Toxic Substances Control Act)
SSTS	Section 7 Tracking Systems
LIENS 2	CERCLA Lien Information
RADINFO	Radiation Information Database
US CDL	Clandestine Drug Labs
HIST FTTS	FIFRA/TSCA Tracking System Administrative Case Listing
ICIS	Integrated Compliance Information System
LUCIS	Land Use Control Information System
DOT OPS	Incident and Accident Data
PADS	PCB Activity Database System
MLTS	Material Licensing Tracking System

EXECUTIVE SUMMARY

MINES..... Mines Master Index File
RAATS..... RCRA Administrative Action Tracking System

STATE AND LOCAL RECORDS

HIST Cal-Sites..... Historical Calsites Database
CA BOND EXP. PLAN..... Bond Expenditure Plan
Toxic Pits..... Toxic Pits Cleanup Act Sites
SWF/LF..... Solid Waste Information System
SLIC..... Statewide SLIC Cases
LIENS..... Environmental Liens Listing
CHMIRS..... California Hazardous Material Incident Report System
DEED..... Deed Restriction Listing
WIP..... Well Investigation Program Case List
CDL..... Clandestine Drug Labs
RESPONSE..... State Response Sites

TRIBAL RECORDS

INDIAN RESERV..... Indian Reservations
INDIAN LUST..... Leaking Underground Storage Tanks on Indian Land
INDIAN UST..... Underground Storage Tanks on Indian Land

SURROUNDING SITES: SEARCH RESULTS

Surrounding sites were identified.

Page numbers and map identification numbers refer to the EDR Radius Map report where detailed data on individual sites can be reviewed.

Sites listed in ***bold italics*** are in multiple databases.

Unmappable (orphan) sites are not considered in the foregoing analysis.

FEDERAL RECORDS

CERCLIS-NFRAP: Archived sites are sites that have been removed and archived from the inventory of CERCLIS sites. Archived status indicates that, to the best of EPA's knowledge, assessment at a site has been completed and that EPA has determined no further steps will be taken to list this site on the National Priorities List (NPL), unless information indicates this decision was not appropriate or other considerations require a recommendation for listing at a later time. This decision does not necessarily mean that there is no hazard associated with a given site; it only means that, based upon available information, the location is not judged to be a potential NPL site.

A review of the CERC-NFRAP list, as provided by EDR, and dated 03/21/2007 has revealed that there is 1 CERC-NFRAP site within the searched area.

<u>Site</u>	<u>Address</u>	<u>Map ID</u>	<u>Page</u>
<i>AGRI-EMPIRE</i>	<i>630 W SEVENTH ST</i>	<i>37</i>	<i>80</i>

EXECUTIVE SUMMARY

RCRAInfo: RCRAInfo is EPA's comprehensive information system, providing access to data supporting the Resource Conservation and Recovery Act (RCRA) of 1976 and the Hazardous and Solid Waste Amendments (HSWA) of 1984. RCRAInfo replaces the data recording and reporting abilities of the Resource Conservation and Recovery Information System(RCRIS). The database includes selective information on sites which generate, transport, store, treat and/or dispose of hazardous waste as defined by the Resource Conservation and Recovery Act (RCRA). Conditionally exempt small quantity generators (CESQGs) generate less than 100 kg of hazardous waste, or less than 1 kg of acutely hazardous waste per month. Small quantity generators (SQGs) generate between 100 kg and 1,000 kg of hazardous waste per month Large quantity generators generate over 1,000 kilograms (kg) of hazardous waste, or over 1 kg of acutely hazardous waste per month. Transporters are individuals or entities that move hazardous waste from the generator offsite to a facility that can recycle, treat, store, or dispose of the waste. TSDFs treat, store, or dispose of the waste.

A review of the RCRA-LQG list, as provided by EDR, and dated 06/13/2006 has revealed that there are 2 RCRA-LQG sites within the searched area.

<u>Site</u>	<u>Address</u>	<u>Map ID</u>	<u>Page</u>
HEMET SAN JACINTO REGIONAL WAT	770 N. SANDERSON AVE.	12	17
NELSON SUBSTATION	LYON AVE. & ESPLANADE A	46	91

RCRAInfo: RCRAInfo is EPA's comprehensive information system, providing access to data supporting the Resource Conservation and Recovery Act (RCRA) of 1976 and the Hazardous and Solid Waste Amendments (HSWA) of 1984. RCRAInfo replaces the data recording and reporting abilities of the Resource Conservation and Recovery Information System(RCRIS). The database includes selective information on sites which generate, transport, store, treat and/or dispose of hazardous waste as defined by the Resource Conservation and Recovery Act (RCRA). Conditionally exempt small quantity generators (CESQGs) generate less than 100 kg of hazardous waste, or less than 1 kg of acutely hazardous waste per month. Small quantity generators (SQGs) generate between 100 kg and 1,000 kg of hazardous waste per month Large quantity generators generate over 1,000 kilograms (kg) of hazardous waste, or over 1 kg of acutely hazardous waste per month. Transporters are individuals or entities that move hazardous waste from the generator offsite to a facility that can recycle, treat, store, or dispose of the waste. TSDFs treat, store, or dispose of the waste.

A review of the RCRA-SQG list, as provided by EDR, and dated 06/13/2006 has revealed that there are 16 RCRA-SQG sites within the searched area.

<u>Site</u>	<u>Address</u>	<u>Map ID</u>	<u>Page</u>
GOLDEN ERA PRODUCTIONS	19625 HIGHWAY 79	1	3
CHEVRON STATION NO 200374	720 W RAMONA EXPY	15	21
CIRCLE K STORE #1271	697 STATE ST	35	66
AGRI-EMPIRE	630 W SEVENTH ST	37	80
EDELBROCK FOUNDRY CORP	1320 BUENA VISTA	39	86
CROWDER MACHINE AND TOOL	375 W ESPLANADE AVE A	41	87
HEMET NEWS	474 W ESPLANDADE AVE	44	88
MCCLANAHAN TRUCKING	1320 S JUANITA	48	93
CALTRANS	1738 JUANITA STREET	51	97
EVANS TIRE INC	2475 S SAN JACINTO	55	101
EASTERN MUNICIPAL WATER DIST	24550 SAN JACINTO	56	108
SAN JACINTO AUTOMOTIVE	1403 E MENLO ST	57	109
HEMET IS HEAVEN RV CENTER	25050 SAN JACINTO AVE	57	113
ALS KUBOTA TRACTOR	25061 SAN JACINTO	59	115
ALS KUBOTA TRACTOR	687 N SAN JACINTO ST	59	116
AMITY STRIP SHOP	24740 SAN JACINTO ST	63	123

EXECUTIVE SUMMARY

FINDS: The Facility Index System contains both facility information and "pointers" to other sources of information that contain more detail. These include: RCRIS; Permit Compliance System (PCS); Aerometric Information Retrieval System (AIRS); FATES (FIFRA [Federal Insecticide Fungicide Rodenticide Act] and TSCA Enforcement System, FTTS [FIFRA/TSCA Tracking System]; CERCLIS; DOCKET (Enforcement Docket used to manage and track information on civil judicial enforcement cases for all environmental statutes); Federal Underground Injection Control (FURS); Federal Reporting Data System (FRDS); Surface Impoundments (SIA); TSCA Chemicals in Commerce Information System (CICS); PADS; RCRA-J (medical waste transporters/disposers); TRIS; and TSCA. The source of this database is the U.S. EPA/NTIS.

A review of the FINDS list, as provided by EDR, and dated 04/12/2007 has revealed that there are 16 FINDS sites within the searched area.

<u>Site</u>	<u>Address</u>	<u>Map ID</u>	<u>Page</u>
GOLDEN ERA PRODUCTIONS	19625 HIGHWAY 79	1	3
CHEVRON STATION NO 200374	720 W RAMONA EXPY	15	21
CIRCLE K STORE #1271	697 STATE ST	35	66
AGRI-EMPIRE	630 W SEVENTH ST	37	80
EDELBROCK FOUNDRY CORP	1320 BUENA VISTA	39	86
CROWDER MACHINE AND TOOL	375 W ESPLANADE AVE A	41	87
HEMET NEWS	474 W ESPLANDADE AVE	44	88
MCCLANAHAN TRUCKING	1320 S JUANITA	48	93
CALTRANS	1738 JUANITA STREET	51	97
EVANS TIRE INC	2475 S SAN JACINTO	55	101
EASTERN MUNICIPAL WATER DIST	24550 SAN JACINTO	56	108
SAN JACINTO AUTOMOTIVE	1403 E MENLO ST	57	109
HEMET IS HEAVEN RV CENTER	25050 SAN JACINTO AVE	57	113
ALS KUBOTA TRACTOR	25061 SAN JACINTO	59	115
ALS KUBOTA TRACTOR	687 N SAN JACINTO ST	59	116
AMITY STRIP SHOP	24740 SAN JACINTO ST	63	123

STATE AND LOCAL RECORDS

SCH: This category contains proposed and existing school sites that are being evaluated by DTSC for possible hazardous materials contamination. In some cases, these properties may be listed in the CalSites category, depending on the level of threat to public health and safety or the environment they pose.

A review of the SCH list, as provided by EDR, and dated 05/29/2007 has revealed that there are 7 SCH sites within the searched area.

<u>Site</u>	<u>Address</u>	<u>Map ID</u>	<u>Page</u>
SAN JACINTO NEW ELEMENTARY SCH	COMMUNITY COLLEGE/STATE	11	14
MT. SAN JACINTO LEARNING CENTE	COUNTRY VILLAGE DRIVE/E	13	17
PROPOSED ALESSANDRO AVENUE ES	22500 ALESSANDRO AVENUE	21	32
SAN JACINTO HIGH SCHOOL	500 IDYLLWID	22	35
PROPOSED ELLEN OACHO ELEMENTAR	CAWSTON/COTTONWOOD	29	52
NEW HIGH SCHOOL NO. 1	ESPLANADE AVENUE/SANDER	47	91
JACOB WIENS ELEMENTARY SCHOOL	S. SANTA FE STREET/E. C	62	121

EXECUTIVE SUMMARY

WDS: California Water Resources Control Board - Waste Discharge System.

A review of the CA WDS list, as provided by EDR, and dated 06/19/2007 has revealed that there are 3 CA WDS sites within the searched area.

<u>Site</u>	<u>Address</u>	<u>Map ID</u>	<u>Page</u>
ED VANDER WOUDE DAIRY	36580 RAMONA EXPRESSWAY	2	6
R & J HARINGA DAIRY	38980 RECORD RD	7	10
SUNNYDALE FARM	2733 COTTONWOOD	29	56

WMUDS/SWAT: The Waste Management Unit Database System is used for program tracking and inventory of waste management units. The source is the State Water Resources Control Board.

A review of the WMUDS/SWAT list, as provided by EDR, and dated 04/01/2000 has revealed that there is 1 WMUDS/SWAT site within the searched area.

<u>Site</u>	<u>Address</u>	<u>Map ID</u>	<u>Page</u>
AMITY STRIP SHOP	24740 SAN JACINTO ST	63	123

CORTESE: This database identifies public drinking water wells with detectable levels of contamination, hazardous substance sites selected for remedial action, sites with known toxic material identified through the abandoned site assessment program, sites with USTs having a reportable release and all solid waste disposal facilities from which there is known migration. The source is the California Environmental Protection Agency/Office of Emergency Information.

A review of the Cortese list, as provided by EDR, and dated 04/01/2001 has revealed that there are 10 Cortese sites within the searched area.

<u>Site</u>	<u>Address</u>	<u>Map ID</u>	<u>Page</u>
FASTRIP STORE #12-777	692 SAN JACINTO AVE	17	24
SAN JACINTO UNIFIED SCHOOL DIS	174 WASHBURN	26	46
REFLECTION LAKE RV PARK	3440 COTTONWOOD AVE	28	49
SAN JACINTO CITY YARD	910 INDUSTRIAL WAY	32	60
DISCOUNT FURNITURE	711 STATE ST	36	68
WAHL'S TEXACO	700 STATE ST	36	74
FACILITY 2206-1	1301 SANTA FE	40	87
SEVEN ELEVEN	1490 SAN JACINTO AVE	49	94
SUPERIOR READY MIX	24161 STATE ST	52	98
MIDWAY TEXACO SERVICE STA	2469	54	101

SWRCY: A listing of recycling facilities in California.

A review of the SWRCY list, as provided by EDR, and dated 04/09/2007 has revealed that there are 2 SWRCY sites within the searched area.

<u>Site</u>	<u>Address</u>	<u>Map ID</u>	<u>Page</u>
ROYAL RECYCLING	1401 MESA VIEW ST #A	43	88
SAN JACINTO RECYCLING CENTER	658 W ESPLANADE AVE	45	90

EXECUTIVE SUMMARY

LUST: The Leaking Underground Storage Tank Incident Reports contain an inventory of reported leaking underground storage tank incidents. The data come from the State Water Resources Control Board Leaking Underground Storage Tank Information System.

A review of the LUST list, as provided by EDR, and dated 04/10/2007 has revealed that there are 21 LUST sites within the searched area.

<u>Site</u>	<u>Address</u>	<u>Map ID</u>	<u>Page</u>
WESTRA DAIRY FARM Facility Status: Case Closed	870 SANDERSON	10	12
FASTRIP STORE #12-777 Facility Status: Case Closed	692 SAN JACINTO AVE	17	24
SAN JACINTO USD SAN JACINTO UNIFIED SCHOOL DIS Facility Status: Case Closed	174 WASHBURN AVE 174 WASHBURN	26 26	46 46
REFLECTION LAKE RV PARK Facility Status: Case Closed	3440 COTTONWOOD AVE	28	49
REFLECTION LAKE R V PARK TEXACO CENTER FUEL STOP SAN JACINTO CITY YARD Facility Status: Case Closed	3440 COTTONWOOD AVE 202 N STATE ST 315 S STATE ST 910 INDUSTRIAL WAY	28 30 31 32	51 57 59 60
DISCOUNT FURNITURE Facility Status: Case Closed	711 STATE ST	36	68
DISCOUNT FURNITURE TEXACO STATION WAHL'S TEXACO Facility Status: Case Closed	711 S STATE ST 700 S STATE ST 700 STATE ST	36 36 36	70 72 74
ARCO #5746 Facility Status: Case Closed	690 STATE STREET	36	78
SEVEN ELEVEN SEVEN ELEVEN Facility Status: Case Closed	1490 S SAN JACINTO ST 1490 SAN JACINTO AVE	42 49	88 94
SUPERIOR READY MIX Facility Status: Case Closed	24161 STATE ST	52	98
TEXACO MIDWAY MIDWAY TEXACO SERVICE STATION Facility Status: Remedial action (cleanup) Underway	2469 S SAN JACINTO ST 2469 SAN JACINTO AVE	55 55	103 105
SHELL #25235 Facility Status: Case Closed	25235 SAN JACINTO ST	57	111
SHELL	501 N SAN JACINTO ST	60	116

CA FID: The Facility Inventory Database contains active and inactive underground storage tank locations. The source is the State Water Resource Control Board.

A review of the CA FID UST list, as provided by EDR, and dated 10/31/1994 has revealed that there are 15 CA FID UST sites within the searched area.

<u>Site</u>	<u>Address</u>	<u>Map ID</u>	<u>Page</u>
RECORD FARMS	920 W RAMONA EXPY	14	20

EXECUTIVE SUMMARY

<u>Site</u>	<u>Address</u>	<u>Map ID</u>	<u>Page</u>
CHEVRON #200374	720 W RAMONA EXPY	15	23
MT SAN JACINTO COLLEGE	1499 N STATE ST	20	29
ARCO AM/PM #5543	833 N RAMONA RD	20	31
7-ELEVEN STORE #26054 (2111)	794 RAMONA BLVD	23	38
GTE SAN JACINTO C O	699 N STATE ST	25	44
TEXACO CENTER	202 N STATE ST	30	57
FUEL STOP	315 S STATE ST	31	59
SAN JACINTO CITY YARD	910 INDUSTRIAL WAY	32	60
ACTION RENTALS	450 N STATE ST	34	65
TEXACO STATION	700 S STATE ST	36	72
AGRI-EMPIRE	630 W SEVENTH ST	37	80
L O LYNCH WELL DRILLING INC	1015 S STATE ST	38	85
SEVEN ELEVEN	1490 SAN JACINTO AVE	49	94
MIDWAY TEXACO SERVICE STA	2469	54	101

UST: The Underground Storage Tank database contains registered USTs. USTs are regulated under Subtitle I of the Resource Conservation and Recovery Act (RCRA). The data come from the State Water Resources Control Board's Hazardous Substance Storage Container Database.

A review of the UST list, as provided by EDR, and dated 04/10/2007 has revealed that there are 14 UST sites within the searched area.

<u>Site</u>	<u>Address</u>	<u>Map ID</u>	<u>Page</u>
MOBIL	2070 N SANDERSON AVE	5	8
MT SAN JACINTO COMMUNITY COLLE	1499 N STATE ST	9	12
CHEVRON SS #1483/0374/	720 W RAMONA EXPY	15	23
CHEVRON SS #1483/200374	720 W RAMONA EXPWY	16	24
GTE CALIFORNIA SAN JACINTO CEN	699 N STATE ST	19	28
VERIZON CALIFORNIA INC. SAN J	699 N STATE ST	19	28
ARCO #5543/ORANGE TREE FRESH F	833 N RAMONA BLVD	20	31
ARCO #5543 (PSI #5257)	833 N RAMONA BLVD	20	31
RESIDENCE	861 RAMONA BLVD	20	32
VEECO FOOD STORE	697 S STATE ST	36	77
VALERO SHOP 'N' GO FOOD STORES	697 S STATE ST	36	78
TEXACO MIDWAY	2469 SAN JACINTO AVE	55	104
TEXACO STATION MIDWAY	2469 SAN JACINTO AVE	55	108
HEMET SHELL #2	501 N SAN JACINTO ST	60	116

HIST UST: Historical UST Registered Database.

A review of the HIST UST list, as provided by EDR, and dated 10/15/1990 has revealed that there are 16 HIST UST sites within the searched area.

<u>Site</u>	<u>Address</u>	<u>Map ID</u>	<u>Page</u>
GOLDEN ERA PRODUCTIONS	19625 HIGHWAY 79	1	3
SAN JACINTO RIVER RANCH	37300 RAMONA EXPRESSWAY	3	7
DE VRY & SON DAIRY	36582 RAMONA EXPY	4	8
HAROLD R. SMITH	38670 RECORD RD	8	11
HAFLIGER DAIRY	21551 WARREN RD	18	27
MT SAN JACINTO COLLEGE	1499 N STATE ST	20	29

EXECUTIVE SUMMARY

<u>Site</u>	<u>Address</u>	<u>Map ID</u>	<u>Page</u>
7-ELEVEN STORE 2134/26054	794 N RAMONA BLVD	23	39
7-ELEVEN STORE #2134/26054	794 N RAMONA BLVD	23	40
TRANSPORTATION DEPARTMENT	174 WASHBURN ST.	27	48
ARA TRANSPORTATION, INC.	450 S STATE ST	33	64
CIRCLE K STORE #1271	697 STATE ST	35	66
WAHL TEXACO	700 S STATE ST	36	70
TEXACO SERVICE STATION	700 S STATE ST	36	76
FARM SHOP	630 W 7TH ST	37	83
USA PETROLEUM COMPANY #70	25235 SAN JACINTO STREE	57	110
SPARTAN	24900 SAN JACINTO	58	113

AST: The Aboveground Storage Tank database contains registered ASTs. The data come from the State Water Resources Control Board's Hazardous Substance Storage Container Database.

A review of the AST list, as provided by EDR, and dated 05/01/2007 has revealed that there are 2 AST sites within the searched area.

<u>Site</u>	<u>Address</u>	<u>Map ID</u>	<u>Page</u>
HEMET SAN JACINTO REG WATER	770 N SANDERSON AVE	12	17
SUPERIOR READY MIX CONCRETE LP	1130 N STATE STREET	53	101

SWEEPS: Statewide Environmental Evaluation and Planning System. This underground storage tank listing was updated and maintained by a company contacted by the SWRCB in the early 1980's. The listing is no longer updated or maintained. The local agency is the contact for more information on a site on the SWEEPS list.

A review of the SWEEPS UST list, as provided by EDR, and dated 06/01/1994 has revealed that there are 16 SWEEPS UST sites within the searched area.

<u>Site</u>	<u>Address</u>	<u>Map ID</u>	<u>Page</u>
GOLDEN ERA PRODUCTIONS	19625 HIGHWAY 79	1	3
RECORD FARMS	920 W RAMONA EXPY	14	20
CHEVRON #200374	720 W RAMONA EXPY	15	23
MT SAN JACINTO COLLEGE	1499 N STATE ST	20	29
ARCO AM/PM #5543	833 N RAMONA RD	20	31
7-ELEVEN STORE #26054 (2111)	794 RAMONA BLVD	23	38
GTE SAN JACINTO C O	699 N STATE ST	25	44
TEXACO CENTER	202 N STATE ST	30	57
FUEL STOP	315 S STATE ST	31	59
SAN JACINTO CITY YARD	910 INDUSTRIAL WAY	32	60
ACTION RENTALS	450 N STATE ST	34	65
TEXACO STATION	700 S STATE ST	36	72
AGRI-EMPIRE	630 W SEVENTH ST	37	80
L O LYNCH WELL DRILLING INC	1015 S STATE ST	38	85
SEVEN ELEVEN	1490 SAN JACINTO AVE	49	94
TEXACO MIDWAY	2469 SAN JACINTO AVE	55	104

EXECUTIVE SUMMARY

NOTIFY 65: Notify 65 records contain facility notifications about any release that could impact drinking water and thereby expose the public to a potential health risk. The data come from the State Water Resources Control Board's Proposition 65 database.

A review of the Notify 65 list, as provided by EDR, and dated 10/21/1993 has revealed that there are 4 Notify 65 sites within the searched area.

<u>Site</u>	<u>Address</u>	<u>Map ID</u>	<u>Page</u>
GOLDEN ERA PRODUCTIONS	19625 HIGHWAY 79	1	3
RANCO SAN JACINTO	650 EAST ESPLANADEN	50	97
SHELL SERVICE STATION	25235 SAN JACINTO	57	108
WAHL'S TEXACO	871 EAST FLORDIA	64	125

VCP: Contains low threat level properties with either confirmed or unconfirmed releases and the project proponents have request that DTSC oversee investigation and/or cleanup activities and have agreed to provide coverage for DTSC's costs.

A review of the VCP list, as provided by EDR, and dated 05/29/2007 has revealed that there is 1 VCP site within the searched area.

<u>Site</u>	<u>Address</u>	<u>Map ID</u>	<u>Page</u>
SO CAL GAS/HEMET MGP	SO. OAKLAND AVE, BY AT	61	117

DRYCLEANERS: A list of drycleaner related facilities that have EPA ID numbers. These are facilities with certain SIC codes: power laundries, family and commercial; garment pressing and cleaners' agents; linen supply; coin-operated laundries and cleaning; drycleaning plants except rugs; carpet and upholster cleaning; industrial launderers; laundry and garment services.

A review of the CLEANERS list, as provided by EDR, and dated 04/18/2005 has revealed that there is 1 CLEANERS site within the searched area.

<u>Site</u>	<u>Address</u>	<u>Map ID</u>	<u>Page</u>
BORDERS CLEANERS	298 N SAN JACINTO AVE	24	42

HAZNET: The data is extracted from the copies of hazardous waste manifests received each year by the DTSC. The annual volume of manifests is typically 700,000-1,000,000 annually, representing approximately 350,000-500,000 shipments. Data from non-California manifests & continuation sheets are not included at the present time. Data are from the manifests submitted without correction, and therefore many contain some invalid values for data elements such as generator ID, TSD ID, waste category, & disposal method. The source is the Department of Toxic Substance Control is the agency

A review of the HAZNET list, as provided by EDR, and dated 12/31/2005 has revealed that there are 11 HAZNET sites within the searched area.

<u>Site</u>	<u>Address</u>	<u>Map ID</u>	<u>Page</u>
COUNTRY LAKE MOBIL HOME PARK	21100 STATE ST	6	9
COUNTRY LAKE MOBIL HOME PARK	21100 STATE HWY 79	6	9
CHEVRON STATION NO 200374	720 W RAMONA EXPY	15	21
RAYMOND DEANGELO	748 SAN JACINTO AVE	17	27
SAN JACINTO HIGH SCHOOL	500 IDYLLWID	22	35

EXECUTIVE SUMMARY

<u>Site</u>	<u>Address</u>	<u>Map ID</u>	<u>Page</u>
BORDERS CLEANERS	298 N SAN JACINTO AVE	24	42
REFLECTION LAKE RV PARK	3440 COTTONWOOD AVE	28	49
ACTION RENTALS	450 N STATE ST	34	65
HEMET NEWS	474 W ESPLANADE AVE	44	88
EVANS TIRE INC	2475 S SAN JACINTO	55	101
JARD M AUTO ENTERPRISES	1403 E MENLO AVE	57	109

Emissions Inventory Data: Toxics and criteria pollutant emissions data collected by the ARB and local air pollution agencies

A review of the EMI list, as provided by EDR, and dated 12/31/2005 has revealed that there is 1 EMI site within the searched area.

<u>Site</u>	<u>Address</u>	<u>Map ID</u>	<u>Page</u>
GTE SAN JACINTO C O	699 N STATE ST	25	44

ENVIROSTOR: The Department of Toxic Substances Control's (DTSC's) Site Mitigation and Brownfields Reuse Program's (SMBRP's) EnviroStor database identifies sites that have known contamination or sites for which there may be reasons to investigate further. The database includes the following site types: Federal Superfund sites (National Priorities List (NPL)); State Response, including Military Facilities and State Superfund; Voluntary Cleanup; and School sites. EnviroStor provides similar information to the information that was available in CalSites, and provides additional site information, including, but not limited to, identification of formerly-contaminated properties that have been released for reuse, properties where environmental deed restrictions have been recorded to prevent inappropriate land uses, and risk characterization information that is used to assess potential impacts to public health and the environment at contaminated sites.

A review of the ENVIROSTOR list, as provided by EDR, and dated 05/29/2007 has revealed that there are 9 ENVIROSTOR sites within the searched area.

<u>Site</u>	<u>Address</u>	<u>Map ID</u>	<u>Page</u>
SAN JACINTO NEW ELEMENTARY SCH Facility Status: No Further Action	COMMUNITY COLLEGE/STATE	11	14
MT. SAN JACINTO LEARNING CENTE Facility Status: Inactive - Action Required	COUNTRY VILLAGE DRIVE/E	13	17
PROPOSED ALESSANDRO AVENUE ES Facility Status: Inactive - Needs Evaluation	22500 ALESSANDRO AVENUE	21	32
SAN JACINTO HIGH SCHOOL Facility Status: No Further Action	500 IDYLLWID	22	35
PROPOSED ELLEN OACHO ELEMENTAR Facility Status: No Further Action	CAWSTON/COTTONWOOD	29	52
AGRI-EMPIRE Facility Status: No Further Action	630 W SEVENTH ST	37	80
NEW HIGH SCHOOL NO. 1 Facility Status: Inactive - Action Required	ESPLANADE AVENUE/SANDER	47	91
SO CAL GAS/HEMET MGP Facility Status: Active	SO. OAKLAND AVE, BY AT	61	117

EXECUTIVE SUMMARY

<u>Site</u>	<u>Address</u>	<u>Map ID</u>	<u>Page</u>
JACOB WIENS ELEMENTARY SCHOOL Facility Status: No Further Action	S. SANTA FE STREET/E. C	62	121

EDR PROPRIETARY RECORDS

EDR Manufactured Gas Plants: The EDR Proprietary Manufactured Gas Plant Database includes records of coal gas plants (manufactured gas plants) compiled by EDR's researchers. Manufactured gas sites were used in the United States from the 1800's to 1950's to produce a gas that could be distributed and used as fuel. These plants used whale oil, rosin, coal, or a mixture of coal, oil, and water that also produced a significant amount of waste. Many of the byproducts of the gas production, such as coal tar (oily waste containing volatile and non-volatile chemicals), sludges, oils and other compounds are potentially hazardous to human health and the environment. The byproduct from this process was frequently disposed of directly at the plant site and can remain or spread slowly, serving as a continuous source of soil and groundwater contamination.

A review of the Manufactured Gas Plants list, as provided by EDR, has revealed that there is 1 Manufactured Gas Plants site within the searched area.

<u>Site</u>	<u>Address</u>	<u>Map ID</u>	<u>Page</u>
SOUTHWESTERN GAS CO	301 E. OAKLAND AVE	61	120

EXECUTIVE SUMMARY

Please refer to the end of the findings report for unmapped orphan sites due to poor or inadequate address information.

MAP FINDINGS SUMMARY

<u>Database</u>	<u>Total Plotted</u>
<u>FEDERAL RECORDS</u>	
NPL	0
Proposed NPL	0
Delisted NPL	0
NPL LIENS	0
CERCLIS	0
CERC-NFRAP	1
CORRACTS	0
RCRA TSD	0
RCRA Lg. Quan. Gen.	2
RCRA Sm. Quan. Gen.	16
ERNS	0
HMIRS	0
US ENG CONTROLS	0
US INST CONTROL	0
DOD	0
FUDS	0
US BROWNFIELDS	0
CONSENT	0
ROD	0
UMTRA	0
ODI	0
TRIS	0
TSCA	0
FTTS	0
SSTS	0
LIENS 2	0
RADINFO	0
CDL	0
HIST FTTS	0
ICIS	0
LUCIS	0
DOT OPS	0
PADS	0
MLTS	0
MINES	0
FINDS	16
RAATS	0
<u>STATE AND LOCAL RECORDS</u>	
Hist Cal-Sites	0
CA Bond Exp. Plan	0
SCH	7
Toxic Pits	0
State Landfill	0
CA WDS	3
WMUDS/SWAT	1
Cortese	10

MAP FINDINGS SUMMARY

<u>Database</u>	<u>Total Plotted</u>
SWRCY	2
LUST	21
CA FID UST	15
SLIC	0
UST	14
HIST UST	16
AST	2
LIENS	0
SWEEPS UST	16
CHMIRS	0
Notify 65	4
DEED	0
VCP	1
DRYCLEANERS	1
WIP	0
CDL	0
RESPONSE	0
HAZNET	11
EMI	1
ENVIROSTOR	9
 <u>TRIBAL RECORDS</u>	
INDIAN RESERV	0
INDIAN LUST	0
INDIAN UST	0
 <u>EDR PROPRIETARY RECORDS</u>	
Manufactured Gas Plants	1

NOTES:

Sites may be listed in more than one database

MAP FINDINGS

Map ID			EDR ID Number
Direction			
Distance			
Distance (ft.)	Site	Database(s)	EPA ID Number

1	GOLDEN ERA PRODUCTIONS 19625 HIGHWAY 79 GILMAN HOT SPRINGS, CA 92583	Notify 65 RCRA-SQG FINDS HIST UST SWEEPS UST	1000186965 CAD982316291
----------	---	---	--

Notify 65:

Date Reported: Not reported
 Staff Initials: Not reported
 Board File Number: Not reported
 Facility Type: Not reported
 Discharge Date: Not reported
 Incident Description: 90072

RCRAInfo:

Owner: CHURCH OF SCIENTOLOGY
 (415) 555-1212
 EPA ID: CAD982316291
 Contact: ENVIRONMENTAL MANAGER
 (714) 654-9573

Classification: Small Quantity Generator
 TSDF Activities: Not reported

Violation Status: Violations exist

Regulation Violated:	Not reported
Area of Violation:	GENERATOR-GENERAL REQUIREMENTS
Date Violation Determined:	09/15/2004
Actual Date Achieved Compliance:	Not reported
Enforcement Action:	WRITTEN INFORMAL
Enforcement Action Date:	09/15/2004
Penalty Type:	Not reported

There are 1 violation record(s) reported at this site:

<u>Evaluation</u>	<u>Area of Violation</u>	<u>Date of Compliance</u>
Compliance Evaluation Inspection	GENERATOR-GENERAL REQUIREMENTS	

FINDS:

Other Pertinent Environmental Activity Identified at Site

RCRAInfo is a national information system that supports the Resource Conservation and Recovery Act (RCRA) program through the tracking of events and activities related to facilities that generate, transport, and treat, store, or dispose of hazardous waste. RCRAInfo allows RCRA program staff to track the notification, permit, compliance, and corrective action activities required under RCRA.

HIST UST:

Region: STATE
 Facility ID: 00000067092
 Tank Num: 001
 Container Num: #1
 Year Installed: Not reported
 Tank Capacity: 00000000

MAP FINDINGS

Map ID
 Direction
 Distance
 Distance (ft.)Site

EDR ID Number

Database(s) EPA ID Number

GOLDEN ERA PRODUCTIONS (Continued)

1000186965

Facility Type: Other
 Other Type: RELIGIOUS AUDIO/VISU
 Total Tanks: 0005
 Tank Used for: WASTE
 Type of Fuel: 2
 Tank Construction: Unkown inches
 Leak Detection: Stock Inventor
 Contact Name: SHAWN MORRISON
 Telephone: 7146544980
 Owner Name: GOLDEN ERA PRODUCTIONS
 Owner Address: 19625 HIGHWAY 74
 Owner City,St,Zip: GILMAN HOT SPRINGS, CA 92340

Region: STATE
 Facility ID: 00000067092
 Tank Num: 002
 Container Num: #2
 Year Installed: Not reported
 Tank Capacity: 00000000
 Facility Type: Other
 Other Type: RELIGIOUS AUDIO/VISU
 Total Tanks: 0005
 Tank Used for: PRODUCT
 Type of Fuel: PREMIUM
 Tank Construction: Not reported
 Leak Detection: Stock Inventor
 Contact Name: SHAWN MORRISON
 Telephone: 7146544980
 Owner Name: GOLDEN ERA PRODUCTIONS
 Owner Address: 19625 HIGHWAY 74
 Owner City,St,Zip: GILMAN HOT SPRINGS, CA 92340

Region: STATE
 Facility ID: 00000067092
 Tank Num: 003
 Container Num: UL#B-76420
 Year Installed: 1979
 Tank Capacity: 00009000
 Facility Type: Other
 Other Type: RELIGIOUS AUDIO/VISU
 Total Tanks: 0005
 Tank Used for: PRODUCT
 Type of Fuel: REGULAR
 Tank Construction: Not reported
 Leak Detection: Stock Inventor
 Contact Name: SHAWN MORRISON
 Telephone: 7146544980
 Owner Name: GOLDEN ERA PRODUCTIONS
 Owner Address: 19625 HIGHWAY 74
 Owner City,St,Zip: GILMAN HOT SPRINGS, CA 92340

Region: STATE
 Facility ID: 00000067092
 Tank Num: 004
 Container Num: UL#F-98991
 Year Installed: 1979
 Tank Capacity: 00008000

MAP FINDINGS

Map ID
 Direction
 Distance
 Distance (ft.)Site

EDR ID Number

Database(s) EPA ID Number

GOLDEN ERA PRODUCTIONS (Continued)

1000186965

Facility Type: Other
 Other Type: RELIGIOUS AUDIO/VISU
 Total Tanks: 0005
 Tank Used for: PRODUCT
 Type of Fuel: REGULAR
 Tank Construction: Not reported
 Leak Detection: Stock Inventor
 Contact Name: SHAWN MORRISON
 Telephone: 7146544980
 Owner Name: GOLDEN ERA PRODUCTIONS
 Owner Address: 19625 HIGHWAY 74
 Owner City,St,Zip: GILMAN HOT SPRINGS, CA 92340

Region: STATE
 Facility ID: 00000067092
 Tank Num: 005
 Container Num: #5
 Year Installed: 1981
 Tank Capacity: 00009000
 Facility Type: Other
 Other Type: RELIGIOUS AUDIO/VISU
 Total Tanks: 0005
 Tank Used for: PRODUCT
 Type of Fuel: DIESEL
 Tank Construction: Not reported
 Leak Detection: Stock Inventor
 Contact Name: SHAWN MORRISON
 Telephone: 7146544980
 Owner Name: GOLDEN ERA PRODUCTIONS
 Owner Address: 19625 HIGHWAY 74
 Owner City,St,Zip: GILMAN HOT SPRINGS, CA 92340

SWEEPS UST:

Status: A
 Comp Number: 1639
 Number: 1
 Board Of Equalization: 44-018503
 Ref Date: 07-09-93
 Act Date: 07-09-93
 Created Date: 07-09-93
 Tank Status: A
 Owner Tank Id: Not reported
 Swrcb Tank Id: 33-000-001639-000001
 Actv Date: 07-09-93
 Capacity: 500
 Tank Use: OIL
 Stg: W
 Content: WASTE OIL
 Number Of Tanks: 1

MAP FINDINGS

Map ID
 Direction
 Distance
 Distance (ft.)Site

EDR ID Number

Database(s) EPA ID Number

**2 ED VANDER WOUDE DAIRY
 36580 RAMONA EXPRESSWAY
 SAN JACINTO, CA 92582**

**CA WDS S103439113
 N/A**

CA WDS:

Facility ID: Santa Ana River 335233001
 Facility Type: Agricultural - Facility that treats and/or disposes of the wastes associated with confined and concentrated animal feeding, confined animal feeding, confined animal holding, confined and concentrated aquatic animal production facilities, and aquaculture. the treatment and/or disposal of agricultural return water is included in this category.
 Facility Status: Active - Any facility with a continuous or seasonal discharge that is under Waste Discharge Requirements.
 NPDES Number: CAG018001 The 1st 2 characters designate the state. The remaining 7 are assigned by the Regional Board
 Subregion: 8
 Facility Telephone: Not reported
 Facility Contact: ED VANDER WOUDE
 Agency Name: VANDER WOUDE ED
 Agency Address: 36580 RAMONA EXPRESSWAY
 Agency City,St,Zip: SAN JACINTO 92582
 Agency Contact: ED VANDER WOUDE
 Agency Telephone: Not reported
 Agency Type: Private
 SIC Code: 241
 SIC Code 2: Not reported
 Primary Waste: Stormwater Runoff
 Primary Waste Type: Nonhazardous Solid Wastes/Influent or Solid Wastes that contain nonhazardous putrescible and non putrescible solid, semisolid, and liquid wastes (E.G., garbage, trash, refuse, paper, demolition and construction wastes, manure, vegetable or animal solid and semisolid waste).
 Secondary Waste: Solid Wastes
 Secondary Waste Type: Nonhazardous Solid Wastes/Influent or Solid Wastes that contain nonhazardous putrescible and non putrescible solid, semisolid, and liquid wastes (E.G., garbage, trash, refuse, paper, demolition and construction wastes, manure, vegetable or animal solid and semisolid waste).
 Design Flow: 0
 Baseline Flow: 0
 Reclamation: No reclamation requirements associated with this facility.
 POTW: The facility is not a POTW.
 Treat To Water: Moderate Threat to Water Quality. A violation could have a major adverse impact on receiving biota, can cause aesthetic impairment to a significant human population, or render unusable a potential domestic or municipal water supply. Awsthetic impairment would include nuisance from a waste treatment facility.
 Complexity: Category C - Facilities having no waste treatment systems, such as cooling water dischargers or thosewho must comply through best management practices, facilities with passive waste treatment and disposal systems, such as septic systems with subsurface disposal, or dischargers having waste storage systems with land disposal such as dairy waste ponds.

MAP FINDINGS

Map ID
 Direction
 Distance
 Distance (ft.)Site

EDR ID Number

Database(s) EPA ID Number

**3 SAN JACINTO RIVER RANCH
 37300 RAMONA EXPRESSWAY
 SAN JACINTO, CA 92383**

**HIST UST U001575656
 N/A**

HIST UST:

Region: STATE
 Facility ID: 00000053971
 Tank Num: 001
 Container Num: 1
 Year Installed: 1960
 Tank Capacity: 00006000
 Facility Type: Other
 Other Type: DIARY FARMING
 Total Tanks: 0003
 Tank Used for: PRODUCT
 Type of Fuel: DIESEL
 Tank Construction: Not reported
 Leak Detection: None
 Contact Name: Not reported
 Telephone: 7146547600
 Owner Name: RALPH PRECIADO
 Owner Address: 37300 RAMONA EXPRESSWAY
 Owner City,St,Zip: SAN JACINTO, CA 92383

Region: STATE
 Facility ID: 00000053971
 Tank Num: 002
 Container Num: 2
 Year Installed: 1960
 Tank Capacity: 00006000
 Facility Type: Other
 Other Type: DIARY FARMING
 Total Tanks: 0003
 Tank Used for: PRODUCT
 Type of Fuel: REGULAR
 Tank Construction: Not reported
 Leak Detection: None
 Contact Name: Not reported
 Telephone: 7146547600
 Owner Name: RALPH PRECIADO
 Owner Address: 37300 RAMONA EXPRESSWAY
 Owner City,St,Zip: SAN JACINTO, CA 92383

Region: STATE
 Facility ID: 00000053971
 Tank Num: 003
 Container Num: 3
 Year Installed: 1960
 Tank Capacity: 00006000
 Facility Type: Other
 Other Type: DIARY FARMING
 Total Tanks: 0003
 Tank Used for: PRODUCT
 Type of Fuel: 06
 Tank Construction: Not reported
 Leak Detection: None
 Contact Name: Not reported
 Telephone: 7146547600
 Owner Name: RALPH PRECIADO

MAP FINDINGS

Map ID			EDR ID Number
Direction			
Distance			
Distance (ft.)Site		Database(s)	EPA ID Number

SAN JACINTO RIVER RANCH (Continued)

U001575656

Owner Address: 37300 RAMONA EXPRESSWAY
 Owner City,St,Zip: SAN JACINTO, CA 92383

**4 DE VRY & SON DAIRY
 36582 RAMONA EXPY
 SAN JACINTO, CA 92383**

**HIST UST U001575636
 N/A**

HIST UST:
 Region: STATE
 Facility ID: 00000042782
 Tank Num: 001
 Container Num: #1
 Year Installed: 1970
 Tank Capacity: 00000500
 Facility Type: Other
 Other Type: DAIRY
 Total Tanks: 0002
 Tank Used for: PRODUCT
 Type of Fuel: PREMIUM
 Tank Construction: Not reported
 Leak Detection: None
 Contact Name: Not reported
 Telephone: 7146544298
 Owner Name: DE VRY & SON DAIRY
 Owner Address: 36582 RAMONA EXP
 Owner City,St,Zip: SAN JACINTO, CA 92383

Region: STATE
 Facility ID: 00000042782
 Tank Num: 002
 Container Num: #2
 Year Installed: 1981
 Tank Capacity: 00000500
 Facility Type: Other
 Other Type: DAIRY
 Total Tanks: 0002
 Tank Used for: PRODUCT
 Type of Fuel: UNLEADED
 Tank Construction: Not reported
 Leak Detection: None
 Contact Name: Not reported
 Telephone: 7146544298
 Owner Name: DE VRY & SON DAIRY
 Owner Address: 36582 RAMONA EXP
 Owner City,St,Zip: SAN JACINTO, CA 92383

**5 MOBIL
 2070 N SANDERSON AVE
 SAN JACINTO, CA 92582**

**UST U004021651
 N/A**

UST:
 Region: RIVERSIDE
 Total Tanks: 3

MAP FINDINGS

Map ID
 Direction
 Distance
 Distance (ft.)Site

EDR ID Number
 Database(s)
 EPA ID Number

6 COUNTRY LAKE MOBIL HOME PARK HAZNET S107143515
21100 STATE ST N/A
SAN JACINTO, CA 92583

HAZNET:
 Gepaid: CAC002570753
 Contact: MARY ENGLEDDOW
 Telephone: 9096549451
 Facility Addr2: Not reported
 Mailing Name: Not reported
 Mailing Address: 21100 STATE ST
 Mailing City,St,Zip: SAN JACINTO, CA 925830000
 Gen County: Riverside
 TSD EPA ID: CAT080013352
 TSD County: Riverside
 Waste Category: Unspecified aqueous solution
 Disposal Method: Recycler
 Tons: 0.89
 Facility County: Riverside

6 COUNTRY LAKE MOBIL HOME PARK HAZNET S103641511
21100 STATE HWY 79 N/A
SAN JACINTO, CA 92583

HAZNET:
 Gepaid: CLU960006736
 Contact: COUNTRY LAKES MOBILE HOME PARK
 Telephone: 0000000000
 Facility Addr2: Not reported
 Mailing Name: Not reported
 Mailing Address: DTSC CLU/ERU
 Mailing City,St,Zip: SACRAMENTO, CA 958120806
 Gen County: Riverside
 TSD EPA ID: AZD049318009
 TSD County: 99
 Waste Category: Other inorganic solid waste
 Disposal Method: Transfer Station
 Tons: .0050
 Facility County: Riverside

Gepaid: CLU960006736
 Contact: COUNTRY LAKES MOBILE HOME PARK
 Telephone: 0000000000
 Facility Addr2: Not reported
 Mailing Name: Not reported
 Mailing Address: DTSC CLU/ERU
 Mailing City,St,Zip: SACRAMENTO, CA 958120806
 Gen County: Riverside
 TSD EPA ID: AZD049318009
 TSD County: 99
 Waste Category: Liquids with pH <UN-> 2
 Disposal Method: Transfer Station
 Tons: .2000
 Facility County: Riverside

Gepaid: CLU960006736
 Contact: COUNTRY LAKES MOBILE HOME PARK
 Telephone: 0000000000
 Facility Addr2: Not reported
 Mailing Name: Not reported

MAP FINDINGS

Map ID
 Direction
 Distance
 Distance (ft.)Site

EDR ID Number
 EPA ID Number

Database(s)

COUNTRY LAKE MOBIL HOME PARK (Continued)

S103641511

Mailing Address: DTSC CLU/ERU
 Mailing City,St,Zip: SACRAMENTO, CA 958120806
 Gen County: Riverside
 TSD EPA ID: AZD049318009
 TSD County: 99
 Waste Category: Off-specification, aged, or surplus organics
 Disposal Method: Transfer Station
 Tons: .0475
 Facility County: Riverside

Gepaid: CAC002556343
 Contact: TOM WILLIAMSON
 Telephone: 8015731700
 Facility Addr2: Not reported
 Mailing Name: Not reported
 Mailing Address: 21100 STATE HWY 79
 Mailing City,St,Zip: SAN JACINTO, CA 925830000
 Gen County: Riverside
 TSD EPA ID: Not reported
 TSD County: Los Angeles
 Waste Category: Off-specification, aged, or surplus organics
 Disposal Method: Transfer Station
 Tons: 1.70
 Facility County: Not reported

Gepaid: CAC002556343
 Contact: TOM WILLIAMSON
 Telephone: 8015731700
 Facility Addr2: Not reported
 Mailing Name: Not reported
 Mailing Address: 21100 STATE HWY 79
 Mailing City,St,Zip: SAN JACINTO, CA 925830000
 Gen County: Riverside
 TSD EPA ID: Not reported
 TSD County: Los Angeles
 Waste Category: Other organic solids
 Disposal Method: Disposal, Land Fill
 Tons: 8.00
 Facility County: Not reported

[Click this hyperlink](#) while viewing on your computer to access additional CA_HAZNET: detail in the EDR Site Report.

7

**R & J HARINGA DAIRY
 38980 RECORD RD
 SAN JACINTO, CA 92583**

**CA WDS S102005813
 N/A**

CA WDS:
 Facility ID: Santa Ana River 335523001
 Facility Type: Agricultural - Facility that treats and/or disposes of the wastes associated with confined and concentrated animal feeding, confined animal feeding, confined animal holding, confined and concentrated aquatic animal production facilities, and aquaculture. the treatment and/or disposal of agricultural return water is included in this category.
 Facility Status: Active - Any facility with a continuous or seasonal discharge that is under Waste Discharge Requirements.
 NPDES Number: CAG018001 The 1st 2 characters designate the state. The remaining 7

MAP FINDINGS

Map ID
 Direction
 Distance
 Distance (ft.)Site

EDR ID Number
 EPA ID Number

Database(s)

R & J HARINGA DAIRY (Continued)

S102005813

are assigned by the Regional Board

Subregion: 8

Facility Telephone: 9514879757

Facility Contact: RON HARINGA

Agency Name: HARINGA RON & JULIE

Agency Address: 1882 N. RAMONA BLVD.

Agency City,St,Zip: SAN JACINTO 92582

Agency Contact: RON HARINGA

Agency Telephone: 9514879757

Agency Type: Private

SIC Code: 241

SIC Code 2: Not reported

Primary Waste: Stormwater Runoff

Primary Waste Type: Nonhazardous Solid Wastes/Influent or Solid Wastes that contain nonhazardous putrescible and non putrescible solid, semisolid, and liquid wastes (E.G., garbage, trash, refuse, paper, demolition and construction wastes, manure, vegetable or animal solid and semisolid waste).

Secondary Waste: Solid Wastes

Secondary Waste Type: Nonhazardous Solid Wastes/Influent or Solid Wastes that contain nonhazardous putrescible and non putrescible solid, semisolid, and liquid wastes (E.G., garbage, trash, refuse, paper, demolition and construction wastes, manure, vegetable or animal solid and semisolid waste).

Design Flow: 0

Baseline Flow: 0

Reclamation: No reclamation requirements associated with this facility.

POTW: The facility is not a POTW.

Treat To Water: Moderate Threat to Water Quality. A violation could have a major adverse impact on receiving biota, can cause aesthetic impairment to a significant human population, or render unusable a potential domestic or municipal water supply. Awsthetic impairment would include nuisance from a waste treatment facility.

Complexity: Category C - Facilities having no waste treatment systems, such as cooling water dischargers or thosewho must comply through best management practices, facilities with passive waste treatment and disposal systems, such as septic systems with subsurface disposal, or dischargers having waste storage systems with land disposal such as dairy waste ponds.

8

**HAROLD R. SMITH
 38670 RECORD RD
 SAN JACINTO, CA 92383**

**HIST UST U001575644
 N/A**

HIST UST:

Region: STATE

Facility ID: 00000015237

Tank Num: 001

Container Num: 1

Year Installed: Not reported

Tank Capacity: 00000550

Facility Type: Other

Other Type: FARM

Total Tanks: 0001

Tank Used for: PRODUCT

Type of Fuel: REGULAR

Tank Construction: Not reported

Leak Detection: None

MAP FINDINGS

Map ID		EDR ID Number
Direction		
Distance		
Distance (ft.)Site	Database(s)	EPA ID Number

HAROLD R. SMITH (Continued)

U001575644

Contact Name: Not reported
 Telephone: 7146592996
 Owner Name: HAROLD R. SMITH
 Owner Address: 38670 RECORD RD.
 Owner City,St,Zip: SAN JACINTO, CA 92383

**9 MT SAN JACINTO COMMUNITY COLLEGE
 1499 N STATE ST
 SAN JACINTO, CA 92583**

**UST U003152797
 N/A**

UST:
 Region: STATE
 Local Agency: 33000
 Facility ID: 535

UST:
 Region: RIVERSIDE
 Total Tanks: 2

**10 WESTRA DAIRY FARM
 870 SANDERSON
 SAN JACINTO, CA 92582**

**LUST S104539431
 N/A**

LUST:
 Region: STATE
 Case Type: Soil only
 Cross Street: Not reported
 Enf Type: Not reported
 Funding: Not reported
 How Discovered: Tank Closure
 How Stopped: Not reported
 Leak Cause: UNK
 Leak Source: Tank
 Global Id: T0606599136
 Stop Date: 1999-12-14 00:00:00
 Confirm Leak: 1999-12-14 00:00:00
 Workplan: 2000-06-02 00:00:00
 Prelim Assess: 2000-10-30 00:00:00
 Pollution Char: Not reported
 Remed Plan: Not reported
 Remed Action: Not reported
 Monitoring: 2001-05-07 00:00:00
 Close Date: 2001-12-26 00:00:00
 Discover Date: 1999-12-14 00:00:00
 Enforcement Dt: Not reported
 Release Date: 2000-02-21 00:00:00
 Review Date: 2000-12-05 00:00:00
 Enter Date: 2000-05-01 00:00:00
 MTBE Date: Not reported
 GW Qualifier: Not reported
 Soil Qualifier: =
 Max MTBE GW ppb: Not reported
 Max MTBE Soil ppb: 377
 County: 33
 Org Name: Not reported
 Reg Board: Santa Ana Region

MAP FINDINGS

Map ID
 Direction
 Distance
 Distance (ft.)Site

EDR ID Number

Database(s) EPA ID Number

WESTRA DAIRY FARM (Continued)

S104539431

Status: Case Closed
 Chemical: Gasoline
 Contact Person: Not reported
 Responsible Party: Westra Family Trust
 RP Address: Not reported
 Interim: Not reported
 Oversight Prgm: LUST
 MTBE Class: *
 MTBE Conc: 1
 MTBE Fuel: 1
 MTBE Tested: MTBE Detected. Site tested for MTBE and MTBE detected
 Staff: RS
 Staff Initials: Not reported
 Lead Agency: Regional Board
 Local Agency: 3300L
 Hydr Basin #: SAN JACINTO (8-5)
 Beneficial: Not reported
 Priority: Not reported
 Cleanup Fund Id: Not reported
 Work Suspended: No
 Local Case #: Not reported
 Case Number: 083303601T
 Qty Leaked: Not reported
 Abate Method: Not reported
 Operator: Cal Westra
 Water System Name: Not reported
 Well Name: Not reported
 Distance To Lust: 0
 Waste Discharge Global ID: Not reported
 Waste Disch Assigned Name: Not reported
 Summary: Not reported

LUST:

Region: 8
 Case Type: Soil only
 Cross Street: Not reported
 Enf Type: Not reported
 Funding: Not reported
 How Discovered: Tank Closure
 How Stopped: Not reported
 Leak Cause: UNK
 Leak Source: Tank
 Global ID: T0606599136
 How Stopped Date: 12/14/1999
 Review Date: 12/14/1999
 Workplan: 6/2/2000
 Prelim Assess: 10/30/2000
 Pollution Char: Not reported
 Remed Plan: Not reported
 Remed Action: Not reported
 Monitoring: 5/7/2001
 Close Date: 12/26/2001
 Discover Date: 12/14/1999
 Enforcement Date: Not reported
 Review Date: 12/5/2000
 Enter Date: 5/1/2000
 MTBE Date: Not reported

MAP FINDINGS

Map ID
 Direction
 Distance
 Distance (ft.)Site

EDR ID Number
 EPA ID Number

Database(s)

WESTRA DAIRY FARM (Continued)

S104539431

GW Qualifies: Not reported
 Soil Qualifies: =
 Max MTBE GW: Not reported
 Max MTBE Soil: 377
 County: Riverside
 Operator: Not reported
 Regional Board: 08
 Facility Status: Case Closed
 Substance: 8006619
 Facility Contact: Not reported
 Interim: Not reported
 Oversight Program: LUST
 Latitude: 33.806672
 Longitude: -117.007106
 MTBE Concentration: 1
 MTBE Fuel: 1
 MTBE Tested: YES
 Staff: RS
 Staff Initials: Not reported
 Lead Agency: Regional Board
 Local Agency: 33000L
 Hydr Basin #: SAN JACINTO (8-5)
 Beneficial: Not reported
 Priority: Not reported
 Cleanup Fund Id: Not reported
 Work Suspended: No
 Local Case Num: Not reported
 Case Number: 083303601T
 Qty Leaked: Not reported
 Abate Method: Not reported
 MTBE Class: *
 Summary: Not reported

11

**SAN JACINTO NEW ELEMENTARY SCHOOL NO. 3
 COMMUNITY COLLEGE/STATE STREET
 SAN JACINTO, CA 92583**

**SCH S107737252
 ENVIROSTOR N/A**

SCH:

Facility ID: 33010024
 Site Type: School Investigation
 Site Type Detail: School
 Acres: 10.5
 National Priorities List: NO
 Cleanup Oversight Agencies: SMBRP
 Lead Agency: SMBRP
 Lead Agency Description: Not reported
 Project Manager: JUAN OSORNIO
 Supervisor: Shahir Haddad
 Division Branch: School Evaluation - Cypress
 Site Code: 404129-11
 Assembly: 65
 Senate: 37
 Special Program Status: Not reported
 Status: No Further Action
 Status Date: 2002-04-17 00:00:00
 Restricted Use: NO
 Funding: School District
 Latitude: 33.7938

MAP FINDINGS

Map ID
 Direction
 Distance
 Distance (ft.)Site

EDR ID Number
 EPA ID Number

Database(s)

SAN JACINTO NEW ELEMENTARY SCHOOL NO. 3 (Continued)

S107737252

Longitude: -116.92
 Alias Name: 404129-11
 33010024
 NEW ELEMENTARY SCHOOL #3 (PROPOSED)
 SAN JACINTO NEW ELEM. SCHOOL #3
 SAN JACINTO NEW ELEM. SCH. #3 (PROP)
 SAN JACINTO UNIFIED SCHOOL DISTRICT
 SAN JACINTO USD/NEW ES NO. 3/VCA
 SAN JACINTO NEW ELEM. SCH. #3
 Alias Type: Envirostor ID Number
 Alternate Name
 Alternate Name
 Project Code (Site Code)
 Alternate Name
 Alternate Name
 Alternate Name
 Alternate Name
 Alternate Name
 APN: NONE SPECIFIED
 APN Description: Not reported
 Comments: Not reported
 Completed Area Name: PROJECT WIDE
 Completed Sub Area Name: Not reported
 Completed Document Type: Preliminary Endangerment Assessment Report
 Completed Date: / /
 Completed Area Name: PROJECT WIDE
 Completed Sub Area Name: Not reported
 Completed Document Type: Environmental Oversight Agreement
 Completed Date: / /
 Confirmed: 31000
 Confirmed Description: No Contaminants found
 Future Area Name: Not reported
 Future Sub Area Name: Not reported
 Future Document Type: Not reported
 Future Due Date: Not reported
 Media Affected: NONE SPECIFIED,31000
 Media Affected Desc: Not reported
 Media Affected Desc: Not reported
 Management Required: NONE SPECIFIED
 Management Required Desc: Not reported
 Potential: NMA
 Potential Description: Not reported
 Schedule Area Name: Not reported
 Schedule Sub Area Name: Not reported
 Schedule Document Type: Not reported
 Schedule Due Date: Not reported
 Schedule Revised Date: Not reported
 PastUse: AGRICULTURAL - ROW CROPS

ENVIROSTOR:

Site Type: School Investigation
 Site Type Detailed: School
 Acres: 10.5
 NPL: NO
 Regulatory Agencies: SMBRP
 Lead Agency: SMBRP
 Program Manager: JUAN OSORNIO
 Supervisor: Shahir Haddad

MAP FINDINGS

Map ID
 Direction
 Distance
 Distance (ft.)Site

EDR ID Number
 EPA ID Number

Database(s)

SAN JACINTO NEW ELEMENTARY SCHOOL NO. 3 (Continued)

S107737252

Division Branch: School Evaluation - Cypress
 Facility ID: 33010024
 Site Code: 404129-11
 Assembly: 65
 Senate: 37
 Special Program: Not reported
Status: No Further Action
 Status Date: 2002-04-17 00:00:00
 Restricted Use: NO
 Funding: School District
 Latitude: 33.7938
 Longitude: -116.92
 Alias Name: 404129-11
 33010024
 NEW ELEMENTARY SCHOOL #3 (PROPOSED)
 SAN JACINTO NEW ELEM. SCHOOL #3
 SAN JACINTO NEW ELEM. SCH. #3 (PROP)
 SAN JACINTO UNIFIED SCHOOL DISTRICT
 SAN JACINTO USD/NEW ES NO. 3/VCA
 SAN JACINTO NEW ELEM. SCH. #3
 Alias Type: Envirostor ID Number
 Alternate Name
 Alternate Name
 Project Code (Site Code)
 Alternate Name
 Alternate Name
 Alternate Name
 Alternate Name
 APN: NONE SPECIFIED
 APN Description: Not reported
 Comments: Not reported
 Completed Area Name: PROJECT WIDE
 Completed Sub Area Name: Not reported
 Completed Document Type: Preliminary Endangerment Assessment Report
 Completed Date: / /
 Completed Area Name: PROJECT WIDE
 Completed Sub Area Name: Not reported
 Completed Document Type: Environmental Oversight Agreement
 Completed Date: / /
 Confirmed: 31000
 Confirmed Description: No Contaminants found
 Future Area Name: Not reported
 Future Sub Area Name: Not reported
 Future Document Type: Not reported
 Future Due Date: Not reported
 Media Affected: NONE SPECIFIED,31000
 Media Affected Desc: Not reported
 Media Affected Desc: Not reported
 Management Required: NONE SPECIFIED
 Management Required Desc: Not reported
 Potential: NMA
 Potential Description: Not reported
 Schedule Area Name: Not reported
 Schedule Sub Area Name: Not reported
 Schedule Document Type: Not reported
 Schedule Due Date: Not reported
 Schedule Revised Date: Not reported

MAP FINDINGS

Map ID
 Direction
 Distance
 Distance (ft.)Site

EDR ID Number
 Database(s)
 EPA ID Number

SAN JACINTO NEW ELEMENTARY SCHOOL NO. 3 (Continued)

S107737252

PastUse: AGRICULTURAL - ROW CROPS

**12 HEMET SAN JACINTO REGIONAL WATER RECLAMA
 770 N. SANDERSON AVE.
 SAN JACINTO, CA 92582**

**RCRA-LQG 1007200253
 CAL000089262**

RCRAInfo:
 Contact: JUDY ADAMS
 (909) 928-3777
 Classification: Large Quantity Generator
 TSD Activities: Not reported
 Violation Status: No violations found

**12 HEMET SAN JACINTO REG WATER
 770 N SANDERSON AVE
 SAN JACINTO, CA 92582**

**AST A100226065
 N/A**

AST:
 Owner: EASTERN MUNICIPAL WATER DIST
 Total Gallons: 5045

**13 MT. SAN JACINTO LEARNING CENTER
 COUNTRY VILLAGE DRIVE/EAGLE ROAD
 SAN JACINTO, CA 92583**

**SCH S106568098
 ENVIROSTOR N/A**

SCH:
 Facility ID: 33010089
 Site Type: School Investigation
 Site Type Detail: School
 Acres: 2.5
 National Priorities List: NO
 Cleanup Oversight Agencies: SMBRP
 Lead Agency: SMBRP
 Lead Agency Description: Not reported
 Project Manager: TAWFIQ DEEK
 Supervisor: Shahir Haddad
 Division Branch: School Evaluation - Cypress
 Site Code: 404496-11
 Assembly: 65
 Senate: 37
 Special Program Status: Not reported
 Status: Inactive - Action Required
 Status Date: 2005-06-02 00:00:00
 Restricted Use: NO
 Funding: School District
 Latitude: 33.8042
 Longitude: -116.9654
 Alias Name: 404496-11
 33010089
 MT. SAN JACINTO LEARNING CENTER
 RIVERSIDE COE-PRPSD MT JACINTO LRNG CTR

MAP FINDINGS

Map ID
 Direction
 Distance
 Distance (ft.)Site

EDR ID Number
 EPA ID Number

Database(s)

MT. SAN JACINTO LEARNING CENTER (Continued)

S106568098

Alias Type: RIVERSIDE COUNTY OFFICE OF EDUCATION
 Envirostor ID Number
 Alternate Name
 Alternate Name
 Alternate Name
 Project Code (Site Code)
 APN: NONE SPECIFIED
 APN Description: Not reported
 Comments: DTSC approved the PEA report for an SSI.
 Completed Area Name: PROJECT WIDE
 Completed Sub Area Name: Not reported
 Completed Document Type: Preliminary Endangerment Assessment Report
 Completed Date: / /
 Completed Area Name: PROJECT WIDE
 Completed Sub Area Name: Not reported
 Completed Document Type: Environmental Oversight Agreement
 Completed Date: / /
 Completed Area Name: PROJECT WIDE
 Completed Sub Area Name: Not reported
 Completed Document Type: Site Inspections/ Visit
 Completed Date: / /
 Confirmed: NONE SPECIFIED
 Confirmed Description: Not reported
 Future Area Name: Not reported
 Future Sub Area Name: Not reported
 Future Document Type: Not reported
 Future Due Date: Not reported
 Media Affected: , 30001, 30008
 Media Affected Desc: Not reported
 Media Affected Desc: Not reported
 Media Affected Desc: Not reported
 Management Required: NONE SPECIFIED
 Management Required Desc: Not reported
 Potential: SOIL
 Potential Description: Not reported
 Schedule Area Name: Not reported
 Schedule Sub Area Name: Not reported
 Schedule Document Type: Not reported
 Schedule Due Date: Not reported
 Schedule Revised Date: Not reported
 PastUse: AGRICULTURAL - ROW CROPS

ENVIROSTOR:

Site Type: School Investigation
 Site Type Detailed: School
 Acres: 2.5
 NPL: NO
 Regulatory Agencies: SMBRP
 Lead Agency: SMBRP
 Program Manager: TAWFIQ DEEK
 Supervisor: Shahir Haddad
 Division Branch: School Evaluation - Cypress
 Facility ID: 33010089
 Site Code: 404496-11
 Assembly: 65
 Senate: 37
 Special Program: Not reported

MAP FINDINGS

Map ID
 Direction
 Distance
 Distance (ft.)Site

EDR ID Number
 EPA ID Number

Database(s)

MT. SAN JACINTO LEARNING CENTER (Continued)

S106568098

Status: Inactive - Action Required
Status Date: 2005-06-02 00:00:00
Restricted Use: NO
Funding: School District
Latitude: 33.8042
Longitude: -116.9654
Alias Name: 404496-11
 33010089
 MT. SAN JACINTO LEARNING CENTER
 RIVERSIDE COE-PRPSD MT JACINTO LRNG CTR
 RIVERSIDE COUNTY OFFICE OF EDUCATION
Alias Type: Envirostor ID Number
 Alternate Name
 Alternate Name
 Alternate Name
 Project Code (Site Code)
APN: NONE SPECIFIED
APN Description: Not reported
Comments: DTSC approved the PEA report for an SSI.
Completed Area Name: PROJECT WIDE
Completed Sub Area Name: Not reported
Completed Document Type: Preliminary Endangerment Assessment Report
Completed Date: / /
Completed Area Name: PROJECT WIDE
Completed Sub Area Name: Not reported
Completed Document Type: Environmental Oversight Agreement
Completed Date: / /
Completed Area Name: PROJECT WIDE
Completed Sub Area Name: Not reported
Completed Document Type: Site Inspections/ Visit
Completed Date: / /
Confirmed: NONE SPECIFIED
Confirmed Description: Not reported
Future Area Name: Not reported
Future Sub Area Name: Not reported
Future Document Type: Not reported
Future Due Date: Not reported
Media Affected: , 30001, 30008
Media Affected Desc: Not reported
Media Affected Desc: Not reported
Media Affected Desc: Not reported
Management Required: NONE SPECIFIED
Management Required Desc: Not reported
Potential: SOIL
Potential Description: Not reported
Schedule Area Name: Not reported
Schedule Sub Area Name: Not reported
Schedule Document Type: Not reported
Schedule Due Date: Not reported
Schedule Revised Date: Not reported
PastUse: AGRICULTURAL - ROW CROPS

MAP FINDINGS

Map ID
 Direction
 Distance
 Distance (ft.)Site

EDR ID Number

Database(s) EPA ID Number

14 **RECORD FARMS**
920 W RAMONA EXPY
SAN JACINTO, CA 92383

CA FID UST **U001968019**
SWEEPS UST **N/A**

CA FID UST:

Facility ID: 33007091
 Regulated By: UTNKA
 Regulated ID: Not reported
 Cortese Code: Not reported
 SIC Code: Not reported
 Facility Phone: 7146548835
 Mail To: Not reported
 Mailing Address: 920 W RAMONA EXPY
 Mailing Address 2: Not reported
 Mailing City,St,Zip: SAN JACINTO 92383
 Contact: Not reported
 Contact Phone: Not reported
 DUNs Number: Not reported
 NPDES Number: Not reported
 EPA ID: Not reported
 Comments: Not reported
 Status: Active

SWEEPS UST:

Status: A
 Comp Number: 52744
 Number: 1
 Board Of Equalization: 44-018333
 Ref Date: 11-18-92
 Act Date: 11-18-92
 Created Date: 04-17-89
 Tank Status: A
 Owner Tank Id: 001531
 Swrcb Tank Id: 33-000-052744-000001
 Actv Date: 11-18-92
 Capacity: 5000
 Tank Use: M.V. FUEL
 Stg: P
 Content: DIESEL
 Number Of Tanks: 3

Status: A
 Comp Number: 52744
 Number: 1
 Board Of Equalization: 44-018333
 Ref Date: 11-18-92
 Act Date: 11-18-92
 Created Date: 04-17-89
 Tank Status: A
 Owner Tank Id: 001531
 Swrcb Tank Id: 33-000-052744-000002
 Actv Date: 11-18-92
 Capacity: 5000
 Tank Use: M.V. FUEL
 Stg: P
 Content: REG UNLEADED
 Number Of Tanks: Not reported

Status: A

MAP FINDINGS

Map ID
 Direction
 Distance
 Distance (ft.)Site

EDR ID Number
 EPA ID Number

Database(s)

RECORD FARMS (Continued)

U001968019

Comp Number: 52744
 Number: 1
 Board Of Equalization: 44-018333
 Ref Date: 11-18-92
 Act Date: 11-18-92
 Created Date: 04-17-89
 Tank Status: A
 Owner Tank Id: 001531
 Swrcb Tank Id: 33-000-052744-000003
 Actv Date: 11-18-92
 Capacity: 5000
 Tank Use: M.V. FUEL
 Stg: P
 Content: REG UNLEADED
 Number Of Tanks: Not reported

15

**CHEVRON STATION NO 200374
 720 W RAMONA EXPY
 SAN JACINTO, CA 92582**

**RCRA-SQG 1006805058
 FINDS CAR000120311
 HAZNET**

RCRAInfo:
 Owner: CHEVRON PRODUCTS CO
 (925) 842-5931
 EPA ID: CAR000120311
 Contact: KATHY NORRIS
 (925) 842-5931
 Classification: Small Quantity Generator
 TSD Activities: Not reported
 Violation Status: No violations found

FINDS:
 Other Pertinent Environmental Activity Identified at Site

California - Hazardous Waste Tracking System - Datamart

RCRAInfo is a national information system that supports the Resource Conservation and Recovery Act (RCRA) program through the tracking of events and activities related to facilities that generate, transport, and treat, store, or dispose of hazardous waste. RCRAInfo allows RCRA program staff to track the notification, permit, compliance, and corrective action activities required under RCRA.

HAZNET:
 Gepaid: CAR000120311
 Contact: Kathy Norris
 Telephone: 9258425931
 Facility Addr2: Not reported
 Mailing Name: Not reported
 Mailing Address: PO BOX 6004
 Mailing City,St,Zip: San Ramon, CA 94583
 Gen County: Riverside

MAP FINDINGS

Map ID
 Direction
 Distance
 Distance (ft.)Site

EDR ID Number
 EPA ID Number

Database(s)

CHEVRON STATION NO 200374 (Continued)

1006805058

TSD EPA ID: CAD008302903
 TSD County: Riverside
 Waste Category: Aqueous solution with less than 10% total organic residues
 Disposal Method: Recycler
 Tons: 3.57
 Facility County: Riverside

Gepaid: CAR000120311
 Contact: Kathy Norris
 Telephone: 9258425931
 Facility Addr2: Not reported
 Mailing Name: Not reported
 Mailing Address: PO BOX 6004
 Mailing City,St,Zip: San Ramon, CA 94583

Gen County: Riverside
 TSD EPA ID: CAD008302903
 TSD County: Riverside
 Waste Category: Unspecified oil-containing waste
 Disposal Method: Recycler
 Tons: 0.62
 Facility County: Riverside

Gepaid: CAR000120311
 Contact: Kathy Norris
 Telephone: 9258425931
 Facility Addr2: Not reported
 Mailing Name: Not reported
 Mailing Address: PO BOX 6004
 Mailing City,St,Zip: San Ramon, CA 94583

Gen County: Riverside
 TSD EPA ID: CAD982444481
 TSD County: San Bernardino
 Waste Category: Unspecified organic liquid mixture
 Disposal Method: Transfer Station
 Tons: 0.2
 Facility County: Not reported

Gepaid: CAR000120311
 Contact: Kathy Norris
 Telephone: 9258425931
 Facility Addr2: Not reported
 Mailing Name: Not reported
 Mailing Address: PO BOX 6004
 Mailing City,St,Zip: San Ramon, CA 94583

Gen County: Riverside
 TSD EPA ID: CAD982444481
 TSD County: San Bernardino
 Waste Category: Unspecified organic liquid mixture
 Disposal Method: Transfer Station
 Tons: 0.2
 Facility County: Not reported

[Click this hyperlink](#) while viewing on your computer to access
 -1 additional CA_HAZNET: record(s) in the EDR Site Report.

MAP FINDINGS

Map ID			EDR ID Number
Direction			
Distance			
Distance (ft.)Site		Database(s)	EPA ID Number

15	CHEVRON SS #1483/0374/ 720 W RAMONA EXPY SAN JACINTO, CA 92582	UST	U004049238 N/A
----	---	------------	---------------------------

UST:
 Region: STATE
 Local Agency: 33000
 Facility ID: 186

15	CHEVRON #200374 720 W RAMONA EXPY SAN JACINTO, CA 92383	CA FID UST SWEEPS UST	S101590158 N/A
----	--	----------------------------------	---------------------------

CA FID UST:
 Facility ID: 33004996
 Regulated By: UTNKA
 Regulated ID: Not reported
 Cortese Code: Not reported
 SIC Code: Not reported
 Facility Phone: 7144879637
 Mail To: Not reported
 Mailing Address: 720 W RAMONA EXPY
 Mailing Address 2: Not reported
 Mailing City,St,Zip: SAN JACINTO 92383
 Contact: Not reported
 Contact Phone: Not reported
 DUNS Number: Not reported
 NPDES Number: Not reported
 EPA ID: Not reported
 Comments: Not reported
 Status: Active

SWEEPS UST:
 Status: A
 Comp Number: 1848
 Number: 1
 Board Of Equalization: Not reported
 Ref Date: 10-27-92
 Act Date: 10-27-92
 Created Date: 02-27-92
 Tank Status: A
 Owner Tank Id: 1
 Swrcb Tank Id: 33-000-001848-000001
 Actv Date: 10-27-92
 Capacity: 10000
 Tank Use: M.V. FUEL
 Stg: P
 Content: MID GRADE UN
 Number Of Tanks: 3

Status: A
 Comp Number: 1848
 Number: 1
 Board Of Equalization: Not reported
 Ref Date: 10-27-92
 Act Date: 10-27-92
 Created Date: 02-27-92
 Tank Status: A
 Owner Tank Id: 2

MAP FINDINGS

Map ID
 Direction
 Distance
 Distance (ft.)Site

EDR ID Number
 EPA ID Number

Database(s)

CHEVRON #200374 (Continued)

S101590158

Swrcb Tank Id: 33-000-001848-000002
 Actv Date: 10-27-92
 Capacity: 10000
 Tank Use: M.V. FUEL
 Stg: P
 Content: REG UNLEADED
 Number Of Tanks: Not reported

Status: A
 Comp Number: 1848
 Number: 1
 Board Of Equalization: Not reported
 Ref Date: 10-27-92
 Act Date: 10-27-92
 Created Date: 02-27-92
 Tank Status: A
 Owner Tank Id: 3
 Swrcb Tank Id: 33-000-001848-000003
 Actv Date: 10-27-92
 Capacity: 10000
 Tank Use: M.V. FUEL
 Stg: P
 Content: REG UNLEADED
 Number Of Tanks: Not reported

16

**CHEVRON SS #1483/200374
 720 W RAMONA EXPWY
 SAN JACINTO, CA 92583**

**UST U003839104
 N/A**

UST:
 Region: RIVERSIDE
 Total Tanks: 3

17

**FASTRIP STORE #12-777
 692 SAN JACINTO AVE
 SAN JACINTO, CA 92583**

**LUST S103316838
 Cortese N/A
 LOS ANGELES CO. HMS**

LUST:
 Region: STATE
 Case Type: Soil only
 Cross Street: 07TH
 Enf Type: TA-CLO
 Funding: Not reported
 How Discovered: Not reported
 How Stopped: Not reported
 Leak Cause: Not reported
 Leak Source: Not reported
 Global Id: T0606500492
 Stop Date: Not reported
 Confirm Leak: 1996-12-31 00:00:00
 Workplan: Not reported
 Prelim Assess: Not reported
 Pollution Char: Not reported

MAP FINDINGS

Map ID
 Direction
 Distance
 Distance (ft.)Site

EDR ID Number

Database(s) EPA ID Number

FASTRIP STORE #12-777 (Continued)

S103316838

Remed Plan: Not reported
 Remed Action: Not reported
 Monitoring: Not reported
 Close Date: 2004-05-17 00:00:00
 Discover Date: 1996-12-31 00:00:00
 Enforcement Dt: Not reported
 Release Date: 1997-06-09 00:00:00
 Review Date: 1997-06-22 00:00:00
 Enter Date: 1997-06-22 00:00:00
 MTBE Date: Not reported
 GW Qualifier: Not reported
 Soil Qualifier: Not reported
 Max MTBE GW ppb: Not reported
 Max MTBE Soil ppb: Not reported
 County: 33
 Org Name: Not reported
 Reg Board: Santa Ana Region
 Status: Case Closed
 Chemical: Gasoline
 Contact Person: Not reported
 Responsible Party: JACO OIL CO.
 RP Address: 3101 STATE RD., BAKERSFIELD CA 93308
 Interim: Not reported
 Oversight Prgm: LUST
 MTBE Class: *
 MTBE Conc: 0
 MTBE Fuel: 1
 MTBE Tested: MTBE Detected. Site tested for MTBE and MTBE detected
 Staff: NOM
 Staff Initials: UNK
 Lead Agency: Local Agency
 Local Agency: 33000L
 Hydr Basin #: SAN JACINTO (8-5)
 Beneficial: Not reported
 Priority: Not reported
 Cleanup Fund Id: Not reported
 Work Suspended: Not reported
 Local Case #: 961274
 Case Number: 083303010T
 Qty Leaked: Not reported
 Abate Method: Not reported
 Operator: Not reported
 Water System Name: Not reported
 Well Name: Not reported
 Distance To Lust: 0
 Waste Discharge Global ID: Not reported
 Waste Disch Assigned Name: Not reported
 Summary: Not reported

LUST:

Region: 8
 Case Type: Soil only
 Cross Street: 07TH
 Enf Type: TA-CLO
 Funding: Not reported
 How Discovered: Not reported
 How Stopped: Not reported

MAP FINDINGS

Map ID
 Direction
 Distance
 Distance (ft.)Site

EDR ID Number

Database(s) EPA ID Number

FASTRIP STORE #12-777 (Continued)

S103316838

Leak Cause: Not reported
 Leak Source: Not reported
 Global ID: T0606500492
 How Stopped Date: Not reported
 Review Date: 12/31/1996
 Workplan: Not reported
 Prelim Assess: Not reported
 Pollution Char: Not reported
 Remed Plan: Not reported
 Remed Action: Not reported
 Monitoring: Not reported
 Close Date: 5/17/2004
 Discover Date: 12/31/1996
 Enforcement Date: Not reported
 Review Date: 6/22/1997
 Enter Date: 6/22/1997
 MTBE Date: Not reported
 GW Qualifies: Not reported
 Soil Qualifies: Not reported
 Max MTBE GW: Not reported
 Max MTBE Soil: Not reported
 County: Riverside
 Operator: Not reported
 Regional Board: 08
 Facility Status: Case Closed
 Substance: 8006619
 Facility Contact: Not reported
 Interim: Not reported
 Oversight Program: LUST
 Latitude: 33.7804555
 Longitude: -116.9588192
 MTBE Concentration: 0
 MTBE Fuel: 1
 MTBE Tested: YES
 Staff: NOM
 Staff Initials: UNK
 Lead Agency: Local Agency
 Local Agency: 33000L
 Hydr Basin #: SAN JACINTO (8-5)
 Beneficial: Not reported
 Priority: Not reported
 Cleanup Fund Id: Not reported
 Work Suspended: Not reported
 Local Case Num: 961274
 Case Number: 083303010T
 Qty Leaked: Not reported
 Abate Method: Not reported
 MTBE Class: *
 Summary: Not reported

Cortese:
 Region: CORTESE
 Facility Addr2: 692 SAN JACINTO AVE

LOS ANGELES CO. HMS:
 Region: LA

MAP FINDINGS

Map ID
 Direction
 Distance
 Distance (ft.)Site

EDR ID Number
 EPA ID Number

Database(s)

FASTRIP STORE #12-777 (Continued)

S103316838

Facility Id: 018379-025689
 Facility Status: Permit
 Area: 5J
 Permit Number: 000214860
 Permit Status: Permit
 Facility Type: I01

17

**RAYMOND DEANGELO
 748 SAN JACINTO AVE
 SAN JACINTO, CA 92508**

HAZNET

**S103983786
 N/A**

HAZNET:

Gepaid: CAC002121624
 Contact: RAYMOND DEANGELO
 Telephone: 9098308563
 Facility Addr2: Not reported
 Mailing Name: Not reported
 Mailing Address: 4721 E COPA DE ORO DR
 Mailing City,St,Zip: ANAHEIM, CA 928070000
 Gen County: Riverside
 TSD EPA ID: CAD982484933
 TSD County: 7
 Waste Category: Other empty containers 30 gallons or more
 Disposal Method: Recycler
 Tons: 18.0000
 Facility County: Riverside

Gepaid: CAC002121624
 Contact: RAYMOND DEANGELO
 Telephone: 9098308563
 Facility Addr2: Not reported
 Mailing Name: Not reported
 Mailing Address: 4721 E COPA DE ORO DR
 Mailing City,St,Zip: ANAHEIM, CA 928070000
 Gen County: Riverside
 TSD EPA ID: CAD008252405
 TSD County: Los Angeles
 Waste Category: Oxygenated solvents (acetone, butanol, ethyl acetate, etc.)
 Disposal Method: Recycler
 Tons: .6255
 Facility County: Riverside

18

**HAFLIGER DAIRY
 21551 WARREN RD
 SAN JACINTO, CA 92383**

HIST UST

**U001575643
 N/A**

HIST UST:

Region: STATE
 Facility ID: 00000054115
 Tank Num: 001
 Container Num: 1
 Year Installed: Not reported
 Tank Capacity: 00000500
 Facility Type: Other
 Other Type: DAIRY
 Total Tanks: 0002

MAP FINDINGS

Map ID
 Direction
 Distance
 Distance (ft.)Site

EDR ID Number

Database(s) EPA ID Number

HAFLIGER DAIRY (Continued)

U001575643

Tank Used for: PRODUCT
 Type of Fuel: UNLEADED
 Tank Construction: Not reported
 Leak Detection: Stock Inventor
 Contact Name: JOHN HAFLIGER
 Telephone: 7146548202
 Owner Name: HENRY HAFLIGER
 Owner Address: 21551 WARREN RD
 Owner City,St,Zip: SAN JACINTO, CA 92383

Region: STATE
 Facility ID: 00000054115
 Tank Num: 002
 Container Num: 2
 Year Installed: Not reported
 Tank Capacity: 00000500
 Facility Type: Other
 Other Type: DAIRY
 Total Tanks: 0002
 Tank Used for: PRODUCT
 Type of Fuel: UNLEADED
 Tank Construction: Not reported
 Leak Detection: Stock Inventor
 Contact Name: JOHN HAFLIGER
 Telephone: 7146548202
 Owner Name: HENRY HAFLIGER
 Owner Address: 21551 WARREN RD
 Owner City,St,Zip: SAN JACINTO, CA 92383

**19 GTE CALIFORNIA SAN JACINTO CENTRAL OFFICE
 699 N STATE ST
 SAN JACINTO, CA 92583**

**UST U003111525
 N/A**

UST:
 Region: STATE
 Local Agency: 33000
 Facility ID: 357

**19 VERIZON CALIFORNIA INC. SAN JACINT
 699 N STATE ST
 SAN JACINTO, CA 92583**

**UST U003755892
 N/A**

UST:
 Region: RIVERSIDE
 Total Tanks: 1

MAP FINDINGS

Map ID
 Direction
 Distance
 Distance (ft.)Site

EDR ID Number
 Database(s)
 EPA ID Number

**20 MT SAN JACINTO COLLEGE
 1499 N STATE ST
 SAN JACINTO, CA 92383**

**CA FID UST 1000376755
 HIST UST N/A
 SWEEPS UST**

CA FID UST:

Facility ID: 33002325
 Regulated By: UTNKA
 Regulated ID: 00012061
 Cortese Code: Not reported
 SIC Code: Not reported
 Facility Phone: 7146548011
 Mail To: Not reported
 Mailing Address: 1499 N STATE ST
 Mailing Address 2: Not reported
 Mailing City,St,Zip: SAN JACINTO 92383
 Contact: Not reported
 Contact Phone: Not reported
 DUNs Number: Not reported
 NPDES Number: Not reported
 EPA ID: Not reported
 Comments: Not reported
 Status: Active

HIST UST:

Region: STATE
 Facility ID: 00000012061
 Tank Num: 001
 Container Num: 0002
 Year Installed: 1976
 Tank Capacity: 00001000
 Facility Type: Other
 Other Type: SCHOOL
 Total Tanks: 0003
 Tank Used for: PRODUCT
 Type of Fuel: UNLEADED
 Tank Construction: Not reported
 Leak Detection: Visual
 Contact Name: MARVIN DANIELS
 Telephone: 7146548011
 Owner Name: MT. SAN JACINTO COLLEGE
 Owner Address: 1499 NORTH STATE STREET
 Owner City,St,Zip: SAN JACINTO, CA 92383

Region: STATE
 Facility ID: 00000012061
 Tank Num: 002
 Container Num: 0003
 Year Installed: 1976
 Tank Capacity: 00001000
 Facility Type: Other
 Other Type: SCHOOL
 Total Tanks: 0003
 Tank Used for: PRODUCT
 Type of Fuel: DIESEL
 Tank Construction: Not reported
 Leak Detection: Visual
 Contact Name: MARVIN DANIELS
 Telephone: 7146548011
 Owner Name: MT. SAN JACINTO COLLEGE

MAP FINDINGS

Map ID
 Direction
 Distance
 Distance (ft.)Site

EDR ID Number
 EPA ID Number

Database(s)

MT SAN JACINTO COLLEGE (Continued)

1000376755

Owner Address: 1499 NORTH STATE STREET
 Owner City,St,Zip: SAN JACINTO, CA 92383
 Region: STATE
 Facility ID: 00000012061
 Tank Num: 003
 Container Num: 0001
 Year Installed: 1976
 Tank Capacity: 00000500
 Facility Type: Other
 Other Type: SCHOOL
 Total Tanks: 0003
 Tank Used for: PRODUCT
 Type of Fuel: REGULAR
 Tank Construction: Not reported
 Leak Detection: Visual
 Contact Name: MARVIN DANIELS
 Telephone: 7146548011
 Owner Name: MT. SAN JACINTO COLLEGE
 Owner Address: 1499 NORTH STATE STREET
 Owner City,St,Zip: SAN JACINTO, CA 92383

SWEEPS UST:

Status: A
 Comp Number: 12061
 Number: 4
 Board Of Equalization: 44-017949
 Ref Date: 11-17-92
 Act Date: 11-17-92
 Created Date: 02-29-88
 Tank Status: A
 Owner Tank Id: 000743
 Swrcb Tank Id: 33-000-012061-000001
 Actv Date: 11-17-92
 Capacity: 1000
 Tank Use: M.V. FUEL
 Stg: P
 Content: REG UNLEADED
 Number Of Tanks: 2

Status: A
 Comp Number: 12061
 Number: 4
 Board Of Equalization: 44-017949
 Ref Date: 11-17-92
 Act Date: 11-17-92
 Created Date: 02-29-88
 Tank Status: A
 Owner Tank Id: 000743
 Swrcb Tank Id: 33-000-012061-000002
 Actv Date: 11-17-92
 Capacity: 2000
 Tank Use: M.V. FUEL
 Stg: P
 Content: DIESEL
 Number Of Tanks: Not reported

MAP FINDINGS

Map ID
 Direction
 Distance
 Distance (ft.)Site

EDR ID Number
 Database(s) EPA ID Number

20 **ARCO #5543/ORANGE TREE FRESH FRUITS** **UST** **U003839057**
833 N RAMONA BLVD
SAN JACINTO, CA 92583 **N/A**

UST:
 Region: RIVERSIDE
 Total Tanks: 3

20 **ARCO #5543 (PSI #5257)** **UST** **U003713421**
833 N RAMONA BLVD
SAN JACINTO, CA 92582 **N/A**

UST:
 Region: STATE
 Local Agency: 33000
 Facility ID: 48

20 **ARCO AM/PM #5543** **CA FID UST** **S101590127**
833 N RAMONA RD **SWEEPS UST** **N/A**
SAN JACINTO, CA 92383

CA FID UST:
 Facility ID: 33004558
 Regulated By: UTNKA
 Regulated ID: Not reported
 Cortese Code: Not reported
 SIC Code: Not reported
 Facility Phone: 7146540944
 Mail To: Not reported
 Mailing Address: 17315 STUDEBAKER RD
 Mailing Address 2: Not reported
 Mailing City,St,Zip: SAN JACINTO 92383
 Contact: Not reported
 Contact Phone: Not reported
 DUNS Number: Not reported
 NPDES Number: Not reported
 EPA ID: Not reported
 Comments: Not reported
 Status: Active

SWEEPS UST:
 Status: A
 Comp Number: 26637
 Number: 1
 Board Of Equalization: 44-000506
 Ref Date: 10-21-92
 Act Date: 10-21-92
 Created Date: 07-21-89
 Tank Status: A
 Owner Tank Id: 001626
 Swrcb Tank Id: 33-000-026637-000001
 Actv Date: 10-21-92
 Capacity: 12000
 Tank Use: M.V. FUEL
 Stg: P

MAP FINDINGS

Map ID
 Direction
 Distance
 Distance (ft.)Site

EDR ID Number
 EPA ID Number

Database(s)

ARCO AM/PM #5543 (Continued)

S101590127

Content: REG UNLEADED
 Number Of Tanks: 3

Status: A
 Comp Number: 26637
 Number: 1
 Board Of Equalization: 44-000506
 Ref Date: 10-21-92
 Act Date: 10-21-92
 Created Date: 07-21-89
 Tank Status: A
 Owner Tank Id: 001626
 Swrcb Tank Id: 33-000-026637-000002
 Actv Date: 10-21-92
 Capacity: 12000
 Tank Use: M.V. FUEL
 Stg: P
 Content: LEADED
 Number Of Tanks: Not reported

Status: A
 Comp Number: 26637
 Number: 1
 Board Of Equalization: 44-000506
 Ref Date: 10-21-92
 Act Date: 10-21-92
 Created Date: 07-21-89
 Tank Status: A
 Owner Tank Id: 001626
 Swrcb Tank Id: 33-000-026637-000003
 Actv Date: 10-21-92
 Capacity: 12000
 Tank Use: M.V. FUEL
 Stg: P
 Content: REG UNLEADED
 Number Of Tanks: Not reported

20

**RESIDENCE
 861 RAMONA BLVD
 SAN JACINTO, CA 92582**

**UST U003895768
 N/A**

UST:
 Region: STATE
 Local Agency: 33000
 Facility ID: 634

21

**PROPOSED ALESSANDRO AVENUE ES
 22500 ALESSANDRO AVENUE
 UNICORPORATED RIVERSIDE, CA 92583**

**SCH S107737068
 ENVIROSTOR N/A**

SCH:
 Facility ID: 70000186
 Site Type: School Investigation
 Site Type Detail: School
 Acres: 13
 National Priorities List: NO

MAP FINDINGS

Map ID
 Direction
 Distance
 Distance (ft.)Site

EDR ID Number
 EPA ID Number

Database(s)

PROPOSED ALESSANDRO AVENUE ES (Continued)

S107737068

Cleanup Oversight Agencies: SMBRP
 Lead Agency: SMBRP
 Lead Agency Description: Not reported
 Project Manager: Ivy Guano
 Supervisor: Shahir Haddad
 Division Branch: School Evaluation - Cypress
 Site Code: 404675-11
 Assembly: 65
 Senate: 37
 Special Program Status: Not reported
 Status: Inactive - Needs Evaluation
 Status Date: 2006-12-27 00:00:00
 Restricted Use: NO
 Funding: School District
 Latitude: 33.79584
 Longitude: -116.95253
 Alias Name: 70000186
 431-180-003
 404675-11
 Alias Type: Envirostor ID Number
 Project Code (Site Code)
 APN
 APN: 431-180-003
 APN Description: Not reported
 Comments: Not reported
 Completed Area Name: PROJECT WIDE
 Completed Sub Area Name: Not reported
 Completed Document Type: Environmental Oversight Agreement
 Completed Date: / /
 Confirmed: 30006-NO,30007-NO,30008-NO,30013-NO,30015-NO
 Confirmed Description: Not reported
 Confirmed Description: Not reported
 Confirmed Description: Not reported
 Confirmed Description: Not reported
 Confirmed Description: Not reported
 Future Area Name: Not reported
 Future Sub Area Name: Not reported
 Future Document Type: Not reported
 Future Due Date: Not reported
 Media Affected: 30006, 30007, 30008, 30013, 30015
 Media Affected Desc: Not reported
 Media Affected Desc: Not reported
 Media Affected Desc: Not reported
 Media Affected Desc: Not reported
 Media Affected Desc: Not reported
 Management Required: NONE SPECIFIED
 Management Required Desc: Not reported
 Potential: SOIL, SV, IA
 Potential Description: Not reported
 Potential Description: Not reported
 Potential Description: Not reported
 Schedule Area Name: Not reported
 Schedule Sub Area Name: Not reported
 Schedule Document Type: Not reported
 Schedule Due Date: Not reported
 Schedule Revised Date: Not reported
 PastUse: AGRICULTURAL - LIVESTOCK, AGRICULTURAL - ORCHARD, AGRICULTURAL - ROW

MAP FINDINGS

Map ID
 Direction
 Distance
 Distance (ft.)Site

EDR ID Number
 EPA ID Number

Database(s)

PROPOSED ALESSANDRO AVENUE ES (Continued)

S107737068

CROPS

ENVIROSTOR:

Site Type: School Investigation
 Site Type Detailed: School
 Acres: 13
 NPL: NO
 Regulatory Agencies: SMBRP
 Lead Agency: SMBRP
 Program Manager: Ivy Guano
 Supervisor: Shahir Haddad
 Division Branch: School Evaluation - Cypress
 Facility ID: 70000186
 Site Code: 404675-11
 Assembly: 65
 Senate: 37
 Special Program: Not reported
Status: Inactive - Needs Evaluation
 Status Date: 2006-12-27 00:00:00
 Restricted Use: NO
 Funding: School District
 Latitude: 33.79584
 Longitude: -116.95253
 Alias Name: 70000186
 431-180-003
 404675-11
 Alias Type: Envirostor ID Number
 Project Code (Site Code)
 APN
 APN: 431-180-003
 APN Description: Not reported
 Comments: Not reported
 Completed Area Name: PROJECT WIDE
 Completed Sub Area Name: Not reported
 Completed Document Type: Environmental Oversight Agreement
 Completed Date: / /
 Confirmed: 30006-NO,30007-NO,30008-NO,30013-NO,30015-NO
 Confirmed Description: Not reported
 Confirmed Description: Not reported
 Confirmed Description: Not reported
 Confirmed Description: Not reported
 Confirmed Description: Not reported
 Future Area Name: Not reported
 Future Sub Area Name: Not reported
 Future Document Type: Not reported
 Future Due Date: Not reported
 Media Affected: 30006, 30007, 30008, 30013, 30015
 Media Affected Desc: Not reported
 Media Affected Desc: Not reported
 Media Affected Desc: Not reported
 Media Affected Desc: Not reported
 Media Affected Desc: Not reported
 Management Required: NONE SPECIFIED
 Management Required Desc: Not reported
 Potential: SOIL, SV, IA
 Potential Description: Not reported
 Potential Description: Not reported

MAP FINDINGS

Map ID
 Direction
 Distance
 Distance (ft.)Site

EDR ID Number
 EPA ID Number

Database(s)

PROPOSED ALESSANDRO AVENUE ES (Continued)

S107737068

Potenital Description: Not reported
 Schedule Area Name: Not reported
 Schedule Sub Area Name: Not reported
 Schedule Document Type: Not reported
 Schedule Due Date: Not reported
 Schedule Revised Date: Not reported
 PastUse: AGRICULTURAL - LIVESTOCK, AGRICULTURAL - ORCHARD, AGRICULTURAL - ROW CROPS

22

**SAN JACINTO HIGH SCHOOL
 500 IDYLLWID
 SAN JACINTO, CA 92583**

**HAZNET S103662276
 SCH N/A
 ENVIROSTOR**

HAZNET:

Gepaid: CAL000089088
 Contact: ROBERT CORNELL
 Telephone: 9099297700
 Facility Addr2: Not reported
 Mailing Name: Not reported
 Mailing Address: 905 INDUSTRIAL WAY
 Mailing City,St,Zip: SAN JACINTO, CA 925822615
 Gen County: Riverside
 TSD EPA ID: Not reported
 TSD County: Los Angeles
 Waste Category: Other inorganic solid waste
 Disposal Method: Transfer Station
 Tons: 0.02
 Facility County: Not reported

Gepaid: CAL000089088
 Contact: BOARD OF TRUSTEES
 Telephone: 9099297700
 Facility Addr2: Not reported
 Mailing Name: Not reported
 Mailing Address: 905 INDUSTRIAL WAY
 Mailing City,St,Zip: SAN JACINTO, CA 925832615
 Gen County: Riverside
 TSD EPA ID: CAT000613976
 TSD County: Orange
 Waste Category: Photochemicals/photoprocessing waste
 Disposal Method: Transfer Station
 Tons: .0625
 Facility County: Riverside

Gepaid: CAL000089088
 Contact: BOARD OF TRUSTEES
 Telephone: 9099297700
 Facility Addr2: Not reported
 Mailing Name: Not reported
 Mailing Address: 905 INDUSTRIAL WAY
 Mailing City,St,Zip: SAN JACINTO, CA 925832615
 Gen County: Riverside
 TSD EPA ID: CAD980887418
 TSD County: 1
 Waste Category: Aqueous solution with less than 10% total organic residues
 Disposal Method: Not reported
 Tons: 1.1259
 Facility County: Riverside

MAP FINDINGS

Map ID
 Direction
 Distance
 Distance (ft.)Site

EDR ID Number
 EPA ID Number

Database(s)

SAN JACINTO HIGH SCHOOL (Continued)

S103662276

SCH:

Facility ID: 33010026
 Site Type: School Investigation
 Site Type Detail: School
 Acres: 0.89
 National Priorities List: NO
 Cleanup Oversight Agencies: DTSC
 Lead Agency: NONE SPECIFIED
 Lead Agency Description: Not reported
 Project Manager: Not reported
 Supervisor: Peter Garcia
 Division Branch: School Evaluation - Cypress
 Site Code: 404139-11
 Assembly: 65
 Senate: 37
 Special Program Status: Not reported
 Status: No Further Action
 Status Date: 2000-10-11 00:00:00
 Restricted Use: NO
 Funding: School District
 Latitude: 33.795274
 Longitude: -116.966754
 Alias Name: 404139-11
 33010026
 SAN JACINTO HIGH SCHOOL SITE
 SAN JACINTO UNIFIED SCHOOL DISTRICT
 SAN JACINTO USD-SAN JACINTO HS EXPANSION
 SAN JACINTO HIGH SCHOOL SITE (EXISTING)
 Alias Type: Envirostor ID Number
 Alternate Name
 Alternate Name
 Project Code (Site Code)
 Alternate Name
 Alternate Name
 APN: NONE SPECIFIED
 APN Description: Not reported
 Comments: Not reported
 Completed Area Name: PROJECT WIDE
 Completed Sub Area Name: Not reported
 Completed Document Type: Preliminary Endangerment Assessment Report
 Completed Date: / /
 Completed Area Name: PROJECT WIDE
 Completed Sub Area Name: Not reported
 Completed Document Type: Environmental Oversight Agreement
 Completed Date: / /
 Confirmed: 30004-NO,30006-NO,30007-NO,30008-NO
 Confirmed Description: Not reported
 Confirmed Description: Not reported
 Confirmed Description: Not reported
 Confirmed Description: Not reported
 Future Area Name: Not reported
 Future Sub Area Name: Not reported
 Future Document Type: Not reported
 Future Due Date: Not reported
 Media Affected: 30004, 30006, 30007, 30008
 Media Affected Desc: Not reported
 Media Affected Desc: Not reported

MAP FINDINGS

Map ID
 Direction
 Distance
 Distance (ft.)Site

EDR ID Number

Database(s) EPA ID Number

SAN JACINTO HIGH SCHOOL (Continued)

S103662276

Media Affected Desc: Not reported
 Media Affected Desc: Not reported
 Management Required: NONE SPECIFIED
 Management Required Desc: Not reported
 Potential: SOIL
 Potential Description: Not reported
 Schedule Area Name: Not reported
 Schedule Sub Area Name: Not reported
 Schedule Document Type: Not reported
 Schedule Due Date: Not reported
 Schedule Revised Date: Not reported
 PastUse: AGRICULTURAL - ROW CROPS

ENVIROSTOR:

Site Type: School Investigation
 Site Type Detailed: School
 Acres: 0.89
 NPL: NO
 Regulatory Agencies: DTSC
 Lead Agency: NONE SPECIFIED
 Program Manager: Not reported
 Supervisor: Peter Garcia
 Division Branch: School Evaluation - Cypress
 Facility ID: 33010026
 Site Code: 404139-11
 Assembly: 65
 Senate: 37
 Special Program: Not reported
Status: No Further Action
 Status Date: 2000-10-11 00:00:00
 Restricted Use: NO
 Funding: School District
 Latitude: 33.795274
 Longitude: -116.966754
 Alias Name: 404139-11
 33010026
 SAN JACINTO HIGH SCHOOL SITE
 SAN JACINTO UNIFIED SCHOOL DISTRICT
 SAN JACINTO USD-SAN JACINTO HS EXPANSION
 SAN JACINTO HIGH SCHOOL SITE (EXISTING)
 Alias Type: Envirostor ID Number
 Alternate Name
 Alternate Name
 Project Code (Site Code)
 Alternate Name
 Alternate Name
 APN: NONE SPECIFIED
 APN Description: Not reported
 Comments: Not reported
 Completed Area Name: PROJECT WIDE
 Completed Sub Area Name: Not reported
 Completed Document Type: Preliminary Endangerment Assessment Report
 Completed Date: / /
 Completed Area Name: PROJECT WIDE
 Completed Sub Area Name: Not reported
 Completed Document Type: Environmental Oversight Agreement
 Completed Date: / /

MAP FINDINGS

Map ID
 Direction
 Distance
 Distance (ft.)Site

EDR ID Number
 EPA ID Number

Database(s)

SAN JACINTO HIGH SCHOOL (Continued)

S103662276

Confirmed: 30004-NO,30006-NO,30007-NO,30008-NO
 Confirmed Description: Not reported
 Confirmed Description: Not reported
 Confirmed Description: Not reported
 Confirmed Description: Not reported
 Future Area Name: Not reported
 Future Sub Area Name: Not reported
 Future Document Type: Not reported
 Future Due Date: Not reported
 Media Affected: 30004, 30006, 30007, 30008
 Media Affected Desc: Not reported
 Media Affected Desc: Not reported
 Media Affected Desc: Not reported
 Media Affected Desc: Not reported
 Management Required: NONE SPECIFIED
 Management Required Desc: Not reported
 Potential: SOIL
 Potential Description: Not reported
 Schedule Area Name: Not reported
 Schedule Sub Area Name: Not reported
 Schedule Document Type: Not reported
 Schedule Due Date: Not reported
 Schedule Revised Date: Not reported
 PastUse: AGRICULTURAL - ROW CROPS

23

**7-ELEVEN STORE #26054 (2111)
 794 RAMONA BLVD
 SAN JACINTO, CA 92383**

**CA FID UST
 SWEEPS UST**

**S101589986
 N/A**

CA FID UST:

Facility ID: 33002085
 Regulated By: UTNKA
 Regulated ID: 00064152
 Cortese Code: Not reported
 SIC Code: Not reported
 Facility Phone: 7143591113
 Mail To: Not reported
 Mailing Address: 120 S STATE COLLEGE BLVD
 Mailing Address 2: Not reported
 Mailing City,St,Zip: SAN JACINTO 92383
 Contact: Not reported
 Contact Phone: Not reported
 DUNS Number: Not reported
 NPDES Number: Not reported
 EPA ID: Not reported
 Comments: Not reported
 Status: Active

SWEEPS UST:

Status: A
 Comp Number: 64152
 Number: 1
 Board Of Equalization: 44-002251
 Ref Date: 11-18-92
 Act Date: 11-18-92
 Created Date: 02-29-88
 Tank Status: A

MAP FINDINGS

Map ID
 Direction
 Distance
 Distance (ft.)Site

EDR ID Number
 EPA ID Number

Database(s)

7-ELEVEN STORE #26054 (2111) (Continued)

S101589986

Owner Tank Id: 000204
 Swrcb Tank Id: 33-000-064152-000001
 Actv Date: 11-18-92
 Capacity: 10000
 Tank Use: M.V. FUEL
 Stg: P
 Content: REG UNLEADED
 Number Of Tanks: 3

Status: A
 Comp Number: 64152
 Number: 1
 Board Of Equalization: 44-002251
 Ref Date: 11-18-92
 Act Date: 11-18-92
 Created Date: 02-29-88
 Tank Status: A
 Owner Tank Id: 000204
 Swrcb Tank Id: 33-000-064152-000002
 Actv Date: 11-18-92
 Capacity: 10000
 Tank Use: M.V. FUEL
 Stg: P
 Content: LEADED
 Number Of Tanks: Not reported

Status: A
 Comp Number: 64152
 Number: 1
 Board Of Equalization: 44-002251
 Ref Date: 11-18-92
 Act Date: 11-18-92
 Created Date: 02-29-88
 Tank Status: A
 Owner Tank Id: 000204
 Swrcb Tank Id: 33-000-064152-000003
 Actv Date: 11-18-92
 Capacity: 10000
 Tank Use: M.V. FUEL
 Stg: P
 Content: REG UNLEADED
 Number Of Tanks: Not reported

23

**7-ELEVEN STORE 2134/26054
 794 N RAMONA BLVD
 SAN JACINTO, CA 92383**

**HIST UST U001575633
 N/A**

HIST UST:
 Region: STATE
 Facility ID: 00000064152
 Tank Num: 001
 Container Num: 01
 Year Installed: 1985
 Tank Capacity: 00010000
 Facility Type: Other
 Other Type: CONVENIENCE STORE W/
 Total Tanks: 0003
 Tank Used for: PRODUCT

MAP FINDINGS

Map ID
 Direction
 Distance
 Distance (ft.)Site

EDR ID Number
 EPA ID Number

Database(s)

7-ELEVEN STORE 2134/26054 (Continued)

U001575633

Type of Fuel: UNLEADED
 Tank Construction: Not reported
 Leak Detection: Stock Inventor, 10
 Contact Name: BOB READ
 Telephone: 7143591113
 Owner Name: THE SOUTHLAND CORPORATION
 Owner Address: 1240 ST. STATE COLLEGE BLVD.
 Owner City,St,Zip: ANAHEIM, CA 92806

Region: STATE
 Facility ID: 00000064152
 Tank Num: 002
 Container Num: 02
 Year Installed: 1985
 Tank Capacity: 00010000
 Facility Type: Other
 Other Type: CONVENIENCE STORE W/
 Total Tanks: 0003
 Tank Used for: PRODUCT

Type of Fuel: REGULAR
 Tank Construction: Not reported
 Leak Detection: Stock Inventor, 10
 Contact Name: BOB READ
 Telephone: 7143591113
 Owner Name: THE SOUTHLAND CORPORATION
 Owner Address: 1240 ST. STATE COLLEGE BLVD.
 Owner City,St,Zip: ANAHEIM, CA 92806

Region: STATE
 Facility ID: 00000064152
 Tank Num: 003
 Container Num: 03
 Year Installed: 1985
 Tank Capacity: 00010000
 Facility Type: Other
 Other Type: CONVENIENCE STORE W/
 Total Tanks: 0003
 Tank Used for: PRODUCT

Type of Fuel: UNLEADED
 Tank Construction: Not reported
 Leak Detection: Stock Inventor, 10
 Contact Name: BOB READ
 Telephone: 7143591113
 Owner Name: THE SOUTHLAND CORPORATION
 Owner Address: 1240 ST. STATE COLLEGE BLVD.
 Owner City,St,Zip: ANAHEIM, CA 92806

23

**7-ELEVEN STORE #2134/26054
 794 N RAMONA BLVD
 SAN JACINTO, CA 92383**

**HIST UST U001575631
 N/A**

HIST UST:
 Region: STATE
 Facility ID: 00000064651
 Tank Num: 001
 Container Num: 01
 Year Installed: 1985
 Tank Capacity: 00010000

MAP FINDINGS

Map ID
 Direction
 Distance
 Distance (ft.)Site

EDR ID Number
 EPA ID Number

Database(s)

7-ELEVEN STORE #2134/26054 (Continued)

U001575631

Facility Type: Gas Station
 Other Type: Not reported
 Total Tanks: 0003
 Tank Used for: PRODUCT
 Type of Fuel: UNLEADED
 Tank Construction: Not reported
 Leak Detection: Stock Inventor, 10
 Contact Name: BOB READ
 Telephone: 7143591113
 Owner Name: THE SOUTHLAND CORPORATION
 Owner Address: 1240 S. STATE COLLEGE BLVD., S
 Owner City,St,Zip: ANAHEIM, CA 92806

Region: STATE
 Facility ID: 00000064651
 Tank Num: 002
 Container Num: 02
 Year Installed: 1985
 Tank Capacity: 00010000
 Facility Type: Gas Station
 Other Type: Not reported
 Total Tanks: 0003
 Tank Used for: PRODUCT
 Type of Fuel: REGULAR
 Tank Construction: Not reported
 Leak Detection: Stock Inventor, 10
 Contact Name: BOB READ
 Telephone: 7143591113
 Owner Name: THE SOUTHLAND CORPORATION
 Owner Address: 1240 S. STATE COLLEGE BLVD., S
 Owner City,St,Zip: ANAHEIM, CA 92806

Region: STATE
 Facility ID: 00000064651
 Tank Num: 003
 Container Num: 03
 Year Installed: 1985
 Tank Capacity: 00010000
 Facility Type: Gas Station
 Other Type: Not reported
 Total Tanks: 0003
 Tank Used for: PRODUCT
 Type of Fuel: UNLEADED
 Tank Construction: Not reported
 Leak Detection: Stock Inventor, 10
 Contact Name: BOB READ
 Telephone: 7143591113
 Owner Name: THE SOUTHLAND CORPORATION
 Owner Address: 1240 S. STATE COLLEGE BLVD., S
 Owner City,St,Zip: ANAHEIM, CA 92806

MAP FINDINGS

Map ID
 Direction
 Distance
 Distance (ft.)Site

EDR ID Number

Database(s) EPA ID Number

24 **BORDERS CLEANERS**
298 N SAN JACINTO AVE
HEMET, CA 92343

HAZNET S103953066
CLEANERS N/A

HAZNET:

Gepaid: CAL000168309
 Contact: WYNN BORDERS
 Telephone: 9096572418
 Facility Addr2: Not reported
 Mailing Name: Not reported
 Mailing Address: 298 SAN JACINTO AVE N
 Mailing City,St,Zip: HEMET, CA 923430000
 Gen County: Riverside
 TSD EPA ID: CAT000613927
 TSD County: San Bernardino
 Waste Category: Liquids with halogenated organic compounds > 1000 mg/l
 Disposal Method: Transfer Station
 Tons: .3750
 Facility County: Riverside

Gepaid: CAL000168309
 Contact: WYNN BORDERS
 Telephone: 9096572418
 Facility Addr2: Not reported
 Mailing Name: Not reported
 Mailing Address: 298 SAN JACINTO AVE N
 Mailing City,St,Zip: HEMET, CA 923430000
 Gen County: Riverside
 TSD EPA ID: CAT000613893
 TSD County: Los Angeles
 Waste Category: Not reported
 Disposal Method: Transfer Station
 Tons: .0000
 Facility County: Riverside

Gepaid: CAL000168309
 Contact: WYNN BORDERS
 Telephone: 9096572418
 Facility Addr2: Not reported
 Mailing Name: Not reported
 Mailing Address: 298 SAN JACINTO AVE N
 Mailing City,St,Zip: HEMET, CA 923430000
 Gen County: Riverside
 TSD EPA ID: CAT000613893
 TSD County: Los Angeles
 Waste Category: Liquids with halogenated organic compounds > 1000 mg/l
 Disposal Method: Transfer Station
 Tons: .4320
 Facility County: Riverside

Gepaid: CAL000168309
 Contact: WYNN BORDERS OWNER
 Telephone: 9096572418
 Facility Addr2: Not reported
 Mailing Name: Not reported
 Mailing Address: 298 SAN JACINTO AVE N
 Mailing City,St,Zip: HEMET, CA 923430000
 Gen County: Riverside
 TSD EPA ID: CAT000613893

MAP FINDINGS

Map ID
 Direction
 Distance
 Distance (ft.)Site

EDR ID Number

Database(s) EPA ID Number

BORDERS CLEANERS (Continued)

S103953066

TSD County: Riverside
 Waste Category: Liquids with halogenated organic compounds > 1000 mg/l
 Disposal Method: Transfer Station
 Tons: 0.19
 Facility County: Riverside

Gepaid: CAL000168309
 Contact: WYNN BORDERS OWNER
 Telephone: 9096572418
 Facility Addr2: Not reported
 Mailing Name: Not reported
 Mailing Address: 298 SAN JACINTO AVE N
 Mailing City,St,Zip: HEMET, CA 923430000
 Gen County: Riverside
 TSD EPA ID: CAT000613893
 TSD County: Los Angeles
 Waste Category: Liquids with halogenated organic compounds > 1000 mg/l
 Disposal Method: Transfer Station
 Tons: 0.38
 Facility County: Not reported

[Click this hyperlink](#) while viewing on your computer to access
 10 additional CA_HAZNET: record(s) in the EDR Site Report.

CLEANERS:

EPA Id: CAL000168309
 NAICS Code: Not reported
 NAICS Description: Not reported
 SIC Code: Not reported
 SIC Description: Not reported
 Create Date: 06/12/1996
 Facility Active: Yes
 Inactive Date: Not reported
 Facility Addr2: Not reported
 Mailing Name: Not reported
 Mailing Address: 298 SAN JACINTO AVE N
 Mailing Address 2: Not reported
 Mailing State: CA
 Mailing Zip: 923430000
 Region Code: 4
 Owner Name: WYNN BORDERS
 Owner Address: 298 N SAN JACINTO AVE
 Owner Address 2: Not reported
 Owner Telephone: 9096572418
 Contact Name: WYNN BORDERS OWNER
 Contact Address: 298 SAN JACINTO AVE N
 Contact Address 2: Not reported
 Contact Telephone: 9096572418

MAP FINDINGS

Map ID
 Direction
 Distance
 Distance (ft.)Site

EDR ID Number

Database(s) EPA ID Number

**25 GTE SAN JACINTO C O
 699 N STATE ST
 SAN JACINTO, CA 92383**

**CA FID UST S101590001
 EMI N/A
 SWEEPS UST**

CA FID UST:

Facility ID: 33002221
 Regulated By: UTNKA
 Regulated ID: Not reported
 Cortese Code: Not reported
 SIC Code: Not reported
 Facility Phone: 7146276261
 Mail To: Not reported
 Mailing Address: P O BOX 725 RC1603
 Mailing Address 2: Not reported
 Mailing City,St,Zip: SAN JACINTO 92383
 Contact: Not reported
 Contact Phone: Not reported
 DUNs Number: Not reported
 NPDES Number: Not reported
 EPA ID: Not reported
 Comments: Not reported
 Status: Active

EMI:

Year: 1987
 Carbon Monoxide Emissions Tons/Yr: 33
 Air Basin: SC
 Facility ID: 52223
 Air District Name: SC
 SIC Code: 9999
 Air District Name: SOUTH COAST AQMD
 Community Health Air Pollution Info System: Not reported
 Consolidated Emission Reporting Rule: Not reported
 Total Organic Hydrocarbon Gases Tons/Yr: 0
 Reactive Organic Gases Tons/Yr: 0
 Carbon Monoxide Emissions Tons/Yr: 0
 NOX - Oxides of Nitrogen Tons/Yr: 0
 SOX - Oxides of Sulphur Tons/Yr: 0
 Particulate Matter Tons/Yr: 0
 Part. Matter 10 Micrometers & Smlr Tons/Yr: 0

Year: 1990
 Carbon Monoxide Emissions Tons/Yr: 33
 Air Basin: SC
 Facility ID: 52223
 Air District Name: SC
 SIC Code: 4813
 Air District Name: SOUTH COAST AQMD
 Community Health Air Pollution Info System: Not reported
 Consolidated Emission Reporting Rule: Not reported
 Total Organic Hydrocarbon Gases Tons/Yr: 0
 Reactive Organic Gases Tons/Yr: 0
 Carbon Monoxide Emissions Tons/Yr: 0
 NOX - Oxides of Nitrogen Tons/Yr: 0
 SOX - Oxides of Sulphur Tons/Yr: 0
 Particulate Matter Tons/Yr: 0
 Part. Matter 10 Micrometers & Smlr Tons/Yr: 0

Year: 1993

MAP FINDINGS

Map ID
 Direction
 Distance
 Distance (ft.)Site

EDR ID Number
 EPA ID Number

Database(s)

GTE SAN JACINTO C O (Continued)

S101590001

Carbon Monoxide Emissions Tons/Yr: 33
 Air Basin: SC
 Facility ID: 52223
 Air District Name: SC
 SIC Code: 4813
 Air District Name: SOUTH COAST AQMD
 Community Health Air Pollution Info System: Not reported
 Consolidated Emission Reporting Rule: Not reported
 Total Organic Hydrocarbon Gases Tons/Yr: 0
 Reactive Organic Gases Tons/Yr: 0
 Carbon Monoxide Emissions Tons/Yr: 0
 NOX - Oxides of Nitrogen Tons/Yr: 0
 SOX - Oxides of Sulphur Tons/Yr: 0
 Particulate Matter Tons/Yr: 0
 Part. Matter 10 Micrometers & Smlr Tons/Yr: 0

Year: 1995
 Carbon Monoxide Emissions Tons/Yr: 33
 Air Basin: SC
 Facility ID: 52223
 Air District Name: SC
 SIC Code: 4813
 Air District Name: SOUTH COAST AQMD
 Community Health Air Pollution Info System: Not reported
 Consolidated Emission Reporting Rule: Not reported
 Total Organic Hydrocarbon Gases Tons/Yr: 0
 Reactive Organic Gases Tons/Yr: 0
 Carbon Monoxide Emissions Tons/Yr: 0
 NOX - Oxides of Nitrogen Tons/Yr: 0
 SOX - Oxides of Sulphur Tons/Yr: 0
 Particulate Matter Tons/Yr: 0
 Part. Matter 10 Micrometers & Smlr Tons/Yr: 0

SWEEPS UST:

Status: A
 Comp Number: 67044
 Number: 1
 Board Of Equalization: 44-018497
 Ref Date: 10-29-92
 Act Date: 10-29-92
 Created Date: 02-16-89
 Tank Status: A
 Owner Tank Id: 000546
 Swrcb Tank Id: 33-000-067044-000001
 Actv Date: 10-29-92
 Capacity: 4000
 Tank Use: M.V. FUEL
 Stg: P
 Content: DIESEL
 Number Of Tanks: 1

MAP FINDINGS

Map ID
 Direction
 Distance
 Distance (ft.)Site

EDR ID Number
 EPA ID Number

Database(s)

SAN JACINTO UNIFIED SCHOOL DIS (Continued)

S101300622

Staff: RS
 Staff Initials: UNK
 Lead Agency: Local Agency
 Local Agency: 33000L
 Hydr Basin #: SAN JACINTO (8-5)
 Beneficial: Not reported
 Priority: Not reported
 Cleanup Fund Id: Not reported
 Work Suspended: Not reported
 Local Case #: 92804
 Case Number: 083302172T
 Qty Leaked: Not reported
 Abate Method: Not reported
 Operator: Not reported
 Water System Name: Not reported
 Well Name: Not reported
 Distance To Lust: 0
 Waste Discharge Global ID: Not reported
 Waste Disch Assigned Name: Not reported
 Summary: Not reported

LUST:

Region: 8
 Case Type: Soil only
 Cross Street: Not reported
 Enf Type: CLOS
 Funding: Not reported
 How Discovered: Tank Closure
 How Stopped: Not reported
 Leak Cause: UNK
 Leak Source: UNK
 Global ID: T0606500300
 How Stopped Date: 8/13/1992
 Review Date: 9/3/1992
 Workplan: 9/8/1992
 Prelim Assess: Not reported
 Pollution Char: Not reported
 Remed Plan: Not reported
 Remed Action: Not reported
 Monitoring: Not reported
 Close Date: 6/18/1993
 Discover Date: 8/19/1992
 Enforcement Date: Not reported
 Review Date: Not reported
 Enter Date: 1/5/1993
 MTBE Date: Not reported
 GW Qualifies: Not reported
 Soil Qualifies: Not reported
 Max MTBE GW: Not reported
 Max MTBE Soil: Not reported
 County: Riverside
 Operator: Not reported
 Regional Board: 08
 Facility Status: Case Closed
 Substance: 12034
 Facility Contact: Not reported
 Interim: Not reported

MAP FINDINGS

Map ID
 Direction
 Distance
 Distance (ft.)Site

EDR ID Number
 EPA ID Number

Database(s)

SAN JACINTO UNIFIED SCHOOL DIS (Continued)

S101300622

Oversite Program: LUST
 Latitude: 33.7890083
 Longitude: -116.9604413
 MTBE Concentration: 0
 MTBE Fuel: 0
 MTBE Tested: NRQ
 Staff: RS
 Staff Initials: UNK
 Lead Agency: Local Agency
 Local Agency: 33000L
 Hydr Basin #: SAN JACINTO (8-5)
 Beneficial: Not reported
 Priority: Not reported
 Cleanup Fund Id: Not reported
 Work Suspended: Not reported
 Local Case Num: 92804
 Case Number: 083302172T
 Qty Leaked: Not reported
 Abate Method: Not reported
 MTBE Class: *
 Summary: Not reported

Cortese:
 Region: CORTESE
 Facility Addr2: Not reported

27

**TRANSPORTATION DEPARTMENT
 174 WASHBURN ST.
 SAN JACINTO, CA 92383**

**HIST UST U001575668
 N/A**

HIST UST:
 Region: STATE
 Facility ID: 00000060758
 Tank Num: 001
 Container Num: 1
 Year Installed: Not reported
 Tank Capacity: 00001000
 Facility Type: Other
 Other Type: SCHOOL BUS TRANSPORT
 Total Tanks: 0002
 Tank Used for: PRODUCT
 Type of Fuel: REGULAR
 Tank Construction: Not reported
 Leak Detection: Visual
 Contact Name: DIRECTOR: ED JAKALSKI
 Telephone: 7146540096
 Owner Name: SAN JACINTO UNIFIED SCHOOL DIS
 Owner Address: 600 E. MAIN ST.
 Owner City,St,Zip: SAN JACINTO, CA 92383

Region: STATE
 Facility ID: 00000060758
 Tank Num: 002
 Container Num: 2
 Year Installed: Not reported
 Tank Capacity: 00001000
 Facility Type: Other

MAP FINDINGS

Map ID
 Direction
 Distance
 Distance (ft.)Site

EDR ID Number
 EPA ID Number

Database(s)

TRANSPORTATION DEPARTMENT (Continued)

U001575668

Other Type: SCHOOL BUS TRANSPORT
 Total Tanks: 0002
 Tank Used for: PRODUCT
 Type of Fuel: DIESEL
 Tank Construction: Not reported
 Leak Detection: None
 Contact Name: DIRECTOR: ED JAKALSKI
 Telephone: 7146540096
 Owner Name: SAN JACINTO UNIFIED SCHOOL DIS
 Owner Address: 600 E. MAIN ST.
 Owner City,St,Zip: SAN JACINTO, CA 92383

28

**REFLECTION LAKE RV PARK
 3440 COTTONWOOD AVE
 SAN JACINTO, CA 92582**

**HAZNET S102435771
 LUST N/A
 Cortese**

HAZNET:

Gepaid: CAC000912584
 Contact: MARY & ANTHONY UZZI
 Telephone: 0000000000
 Facility Addr2: Not reported
 Mailing Name: Not reported
 Mailing Address: 3440 COTTONWOOD
 Mailing City,St,Zip: SAN JACINTO, CA 925820000
 Gen County: Riverside
 TSD EPA ID: CAT080013352
 TSD County: Los Angeles
 Waste Category: Tank bottom waste
 Disposal Method: Recycler
 Tons: .2085
 Facility County: Riverside

LUST:

Region: STATE
 Case Type: Soil only
 Cross Street: Not reported
 Enf Type: Not reported
 Funding: Not reported
 How Discovered: Tank Closure
 How Stopped: Not reported
 Leak Cause: Overfill
 Leak Source: Tank
 Global Id: T0606500444
 Stop Date: 1995-08-14 00:00:00
 Confirm Leak: Not reported
 Workplan: Not reported
 Prelim Assess: Not reported
 Pollution Char: Not reported
 Remed Plan: Not reported
 Remed Action: Not reported
 Monitoring: Not reported
 Close Date: 2003-02-13 00:00:00
 Discover Date: 1995-08-14 00:00:00
 Enforcement Dt: Not reported
 Release Date: 1995-09-05 00:00:00
 Review Date: 1997-04-07 00:00:00
 Enter Date: 1995-12-15 00:00:00

MAP FINDINGS

Map ID
 Direction
 Distance
 Distance (ft.)Site

EDR ID Number

Database(s) EPA ID Number

REFLECTION LAKE RV PARK (Continued)

S102435771

MTBE Date: Not reported
 GW Qualifier: Not reported
 Soil Qualifier: Not reported
 Max MTBE GW ppb: Not reported
 Max MTBE Soil ppb: Not reported
 County: 33
 Org Name: Not reported
 Reg Board: Santa Ana Region
 Status: Case Closed
 Chemical: Gasoline
 Contact Person: Not reported
 Responsible Party: MARY UZZI
 RP Address: 3440 COTTONWOOD AVE., SAN JACINTO CA 92582
 Interim: Not reported
 Oversight Prgm: LUST
 MTBE Class: *
 MTBE Conc: 0
 MTBE Fuel: 1
 MTBE Tested: Site NOT Tested for MTBE.Includes Unknown and Not Analyzed.
 Staff: CAB
 Staff Initials: UNK
 Lead Agency: Local Agency
 Local Agency: 33000L
 Hydr Basin #: SAN JACINTO (8-5)
 Beneficial: Not reported
 Priority: Not reported
 Cleanup Fund Id: Not reported
 Work Suspended: Not reported
 Local Case #: 95717
 Case Number: 083302746T
 Qty Leaked: Not reported
 Abate Method: Not reported
 Operator: Not reported
 Water System Name: Not reported
 Well Name: Not reported
 Distance To Lust: 0
 Waste Discharge Global ID: Not reported
 Waste Disch Assigned Name: Not reported
 Summary: Not reported

LUST:

Region: 8
 Case Type: Soil only
 Cross Street: Not reported
 Enf Type: Not reported
 Funding: Not reported
 How Discovered: Tank Closure
 How Stopped: Not reported
 Leak Cause: Overfill
 Leak Source: Tank
 Global ID: T0606500444
 How Stopped Date: 8/14/1995
 Review Date: Not reported
 Workplan: 1/1/1965
 Prelim Assess: Not reported
 Pollution Char: Not reported
 Remed Plan: Not reported

MAP FINDINGS

Map ID
 Direction
 Distance
 Distance (ft.)Site

EDR ID Number
 EPA ID Number

Database(s)

REFLECTION LAKE RV PARK (Continued)

S102435771

Remed Action: Not reported
 Monitoring: Not reported
 Close Date: 2/13/2003
 Discover Date: 8/14/1995
 Enforcement Date: Not reported
 Review Date: 4/7/1997
 Enter Date: 12/15/1995
 MTBE Date: Not reported
 GW Qualifies: Not reported
 Soil Qualifies: Not reported
 Max MTBE GW: Not reported
 Max MTBE Soil: Not reported
 County: Riverside
 Operator: Not reported
 Regional Board: 08
 Facility Status: Preliminary site assessment workplan submitted
 Substance: 8006619
 Facility Contact: Not reported
 Interim: Not reported
 Oversight Program: LUST
 Latitude: 33.7872754
 Longitude: -117.03264
 MTBE Concentration: 0
 MTBE Fuel: 1
 MTBE Tested: NT
 Staff: CAB
 Staff Initials: UNK
 Lead Agency: Local Agency
 Local Agency: 33000L
 Hydr Basin #: SAN JACINTO (8-5)
 Beneficial: Not reported
 Priority: Not reported
 Cleanup Fund Id: Not reported
 Work Suspended: Not reported
 Local Case Num: 95717
 Case Number: 083302746T
 Qty Leaked: Not reported
 Abate Method: Not reported
 MTBE Class: *
 Summary: Not reported

Cortese:
 Region: CORTESE
 Facility Addr2: 3440 COTTONWOOD AVE

28

**REFLECTION LAKE R V PARK
 3440 COTTONWOOD AVE
 SAN JACINTO, CA**

**LUST S103821004
 N/A**

LUST:
 Region: RIVERSIDE
 Site Closed: Yes
 Employee ID: 20
 Facility ID: 95717
 Case Type: Soil only
 Status: 9

MAP FINDINGS

Map ID
 Direction
 Distance
 Distance (ft.)Site

EDR ID Number
 EPA ID Number

Database(s)

PROPOSED ELLEN OACHO ELEMENTARY SCHOOL (Continued)

S108054396

Management Required Desc: Not reported
 Potential: NMA, SOIL
 Potential Description: Not reported
 Potential Description: Not reported
 Schedule Area Name: Not reported
 Schedule Sub Area Name: Not reported
 Schedule Document Type: Not reported
 Schedule Due Date: Not reported
 Schedule Revised Date: Not reported
 PastUse: AGRICULTURAL - ROW CROPS, RESIDENTIAL AREA

ENVIROSTOR:

Site Type: School Investigation
 Site Type Detailed: School
 Acres: 11.35
 NPL: NO
 Regulatory Agencies: SMBRP
 Lead Agency: SMBRP
 Program Manager: Andrea Juarez
 Supervisor: Tawfiq Deek
 Division Branch: School Evaluation - Cypress
 Facility ID: 60000325
 Site Code: 404710-11
 Assembly: 65
 Senate: 37
 Special Program: Not reported
Status: No Further Action
 Status Date: 2007-02-26 00:00:00
 Restricted Use: NO
 Funding: School District
 Latitude: 33.9005
 Longitude: -115.86
 Alias Name: Proposed Cawston Elementary School
 60000325
 404710-11
 Alias Type: Project Code (Site Code)
 Envirostor ID Number
 Alternate Name
 APN: NONE SPECIFIED
 APN Description: Not reported
 Comments: Not reported
 Completed Area Name: Not reported
 Completed Sub Area Name: Not reported
 Completed Document Type: Not reported
 Completed Date: Not reported
 Confirmed: 30515-NO,30542-NO,30021-NO,30023-NO,30043-NO,30058-NO,30067-NO,30080-N
 ,30108-NO,30152-NO,30153-NO,30154-NO,30156-NO,30207-NO,30261-NO,30308-
 O,30343-NO,30367-NO,30402-NO,30407-NO,30001-NO,30004-NO,30006-NO,30007
 NO,30008-NO,30010-NO,30013-NO,30014-
 Confirmed Description: Not reported
 Confirmed Description: Not reported
 Confirmed Description: Not reported
 Confirmed Description: Not reported
 Confirmed Description: Not reported
 Confirmed Description: Not reported
 Confirmed Description: Not reported
 Confirmed Description: Not reported

MAP FINDINGS

Map ID
 Direction
 Distance
 Distance (ft.)Site

EDR ID Number
 EPA ID Number

Database(s)

PROPOSED ELLEN OACHO ELEMENTARY SCHOOL (Continued)

S108054396

Media Affected Desc: Not reported
 Media Affected Desc: Not reported
 Media Affected Desc: Not reported
 Media Affected Desc: Not reported
 Media Affected Desc: Not reported
 Media Affected Desc: Not reported
 Media Affected Desc: Not reported
 Management Required: NONE SPECIFIED
 Management Required Desc: Not reported
 Potential: NMA, SOIL
 Potential Description: Not reported
 Potential Description: Not reported
 Schedule Area Name: Not reported
 Schedule Sub Area Name: Not reported
 Schedule Document Type: Not reported
 Schedule Due Date: Not reported
 Schedule Revised Date: Not reported
 PastUse: AGRICULTURAL - ROW CROPS, RESIDENTIAL AREA

29

**SUNNYDALE FARM
 2733 COTTONWOOD
 SAN JACINTO, CA 92581**

**CA WDS S102005482
 N/A**

CA WDS:

Facility ID: Santa Ana River 335503001
 Facility Type: Agricultural - Facility that treats and/or disposes of the wastes associated with confined and concentrated animal feeding, confined animal feeding, confined animal holding, confined and concentrated aquatic animal production facilities, and aquaculture. the treatment and/or disposal of agricultural return water is included in this category.
 Facility Status: Active - Any facility with a continuous or seasonal discharge that is under Waste Discharge Requirements.
 NPDES Number: CAG018001 The 1st 2 characters designate the state. The remaining 7 are assigned by the Regional Board
 Subregion: 8
 Facility Telephone: Not reported
 Facility Contact: DALE BARTEL
 Agency Name: BARTEL DALE
 Agency Address: 2733 COTTONWOOD
 Agency City,St,Zip: SAN JACINTO 92581
 Agency Contact: DALE BARTEL
 Agency Telephone: Not reported
 Agency Type: Private
 SIC Code: 241
 SIC Code 2: Not reported
 Primary Waste: Stormwater Runoff
 Primary Waste Type: Nonhazardous Solid Wastes/Influent or Solid Wastes that contain nonhazardous putrescible and non putrescible solid, semisolid, and liquid wastes (E.G., garbage, trash, refuse, paper, demolition and construction wastes, manure, vegetable or animal solid and semisolid waste).
 Secondary Waste: Solid Wastes
 Secondary Waste Type: Nonhazardous Solid Wastes/Influent or Solid Wastes that contain nonhazardous putrescible and non putrescible solid, semisolid, and liquid wastes (E.G., garbage, trash, refuse, paper, demolition and construction wastes, manure, vegetable or animal solid and semisolid waste).

MAP FINDINGS

Map ID
 Direction
 Distance
 Distance (ft.)Site

EDR ID Number
 EPA ID Number

Database(s)

SUNNYDALE FARM (Continued)

S102005482

Design Flow: 0
 Baseline Flow: 0
 Reclamation: No reclamation requirements associated with this facility.
 POTW: The facility is not a POTW.
 Treat To Water: Moderate Threat to Water Quality. A violation could have a major adverse impact on receiving biota, can cause aesthetic impairment to a significant human population, or render unusable a potential domestic or municipal water supply. Awsthetic impairment would include nuisance from a waste treatment facility.
 Complexity: Category C - Facilities having no waste treatment systems, such as cooling water dischargers or thosewho must comply through best management practices, facilities with passive waste treatment and disposal systems, such as septic systems with subsurface disposal, or dischargers having waste storage systems with land disposal such as dairy waste ponds.

30

**TEXACO CENTER
 202 N STATE ST
 HEMET, CA 92343**

**LUST
 CA FID UST
 SWEEPS UST**

**S101590094
 N/A**

LUST:

Region: RIVERSIDE
 Site Closed: Not Closed
 Employee ID: 20
 Facility ID: 9915008
 Case Type: Soil only
 Status: 3

CA FID UST:

Facility ID: 33004002
 Regulated By: UTNKA
 Regulated ID: 00032593
 Cortese Code: Not reported
 SIC Code: Not reported
 Facility Phone: 7146522406
 Mail To: Not reported
 Mailing Address: 148 S GILBERT
 Mailing Address 2: Not reported
 Mailing City,St,Zip: HEMET 92343
 Contact: Not reported
 Contact Phone: Not reported
 DUNs Number: Not reported
 NPDES Number: Not reported
 EPA ID: Not reported
 Comments: Not reported
 Status: Active

SWEEPS UST:

Status: A
 Comp Number: 32593
 Number: 1
 Board Of Equalization: 44-000217
 Ref Date: 05-13-93
 Act Date: 05-13-93
 Created Date: 02-29-88
 Tank Status: A
 Owner Tank Id: 001015

MAP FINDINGS

Map ID
 Direction
 Distance
 Distance (ft.)Site

EDR ID Number

Database(s) EPA ID Number

TEXACO CENTER (Continued)

S101590094

Swrcb Tank Id: 33-000-032593-000001
 Actv Date: 05-13-93
 Capacity: 8000
 Tank Use: M.V. FUEL
 Stg: P
 Content: REG UNLEADED
 Number Of Tanks: 4

Status: A
 Comp Number: 32593
 Number: 1
 Board Of Equalization: 44-000217
 Ref Date: 05-13-93
 Act Date: 05-13-93
 Created Date: 02-29-88
 Tank Status: A
 Owner Tank Id: 001015
 Swrcb Tank Id: 33-000-032593-000002
 Actv Date: 05-13-93
 Capacity: 8000
 Tank Use: M.V. FUEL
 Stg: P
 Content: UNLEADED PLU
 Number Of Tanks: Not reported

Status: A
 Comp Number: 32593
 Number: 1
 Board Of Equalization: 44-000217
 Ref Date: 05-13-93
 Act Date: 05-13-93
 Created Date: 02-29-88
 Tank Status: A
 Owner Tank Id: 001015
 Swrcb Tank Id: 33-000-032593-000003
 Actv Date: 05-13-93
 Capacity: 8000
 Tank Use: M.V. FUEL
 Stg: P
 Content: REG UNLEADED
 Number Of Tanks: Not reported

Status: A
 Comp Number: 32593
 Number: 1
 Board Of Equalization: 44-000217
 Ref Date: 05-13-93
 Act Date: 05-13-93
 Created Date: 02-29-88
 Tank Status: A
 Owner Tank Id: 001015
 Swrcb Tank Id: 33-000-032593-000004
 Actv Date: 05-13-93
 Capacity: 8000
 Tank Use: M.V. FUEL
 Stg: P
 Content: PRM UNLEADED

MAP FINDINGS

Map ID		EDR ID Number
Direction		
Distance		
Distance (ft.)Site	Database(s)	EPA ID Number

TEXACO CENTER (Continued)

S101590094

Number Of Tanks: Not reported

31

FUEL STOP
315 S STATE ST
SAN JACINTO, CA 92383

LUST S101619422
CA FID UST N/A
SWEEPS UST

LUST:

Region: RIVERSIDE
 Site Closed: Yes
 Employee ID: 20
 Facility ID: 9915143
 Case Type: Soil only
 Status: 9

CA FID UST:

Facility ID: 33007056
 Regulated By: UTNKA
 Regulated ID: 00045823
 Cortese Code: Not reported
 SIC Code: Not reported
 Facility Phone: 7149828954
 Mail To: Not reported
 Mailing Address: 1401 E ARROW HWY
 Mailing Address 2: Not reported
 Mailing City,St,Zip: SAN JACINTO 92383
 Contact: Not reported
 Contact Phone: Not reported
 DUNS Number: Not reported
 NPDES Number: Not reported
 EPA ID: Not reported
 Comments: Not reported
 Status: Active

SWEEPS UST:

Status: A
 Comp Number: 45823
 Number: 1
 Board Of Equalization: 44-018276
 Ref Date: 10-29-92
 Act Date: 10-29-92
 Created Date: 02-29-88
 Tank Status: A
 Owner Tank Id: 000514
 Swrcb Tank Id: 33-000-045823-000001
 Actv Date: 10-29-92
 Capacity: 12000
 Tank Use: M.V. FUEL
 Stg: P
 Content: DIESEL
 Number Of Tanks: 3

Status: A
 Comp Number: 45823
 Number: 1
 Board Of Equalization: 44-018276
 Ref Date: 10-29-92
 Act Date: 10-29-92

MAP FINDINGS

Map ID
 Direction
 Distance
 Distance (ft.)Site

EDR ID Number
 EPA ID Number

Database(s)

FUEL STOP (Continued)

S101619422

Created Date: 02-29-88
 Tank Status: A
 Owner Tank Id: 000514
 Swrcb Tank Id: 33-000-045823-000002
 Actv Date: 10-29-92
 Capacity: 10000
 Tank Use: M.V. FUEL
 Stg: P
 Content: LEADED
 Number Of Tanks: Not reported

Status: A
 Comp Number: 45823
 Number: 1
 Board Of Equalization: 44-018276
 Ref Date: 10-29-92
 Act Date: 10-29-92
 Created Date: 02-29-88
 Tank Status: A
 Owner Tank Id: 000514
 Swrcb Tank Id: 33-000-045823-000003
 Actv Date: 10-29-92
 Capacity: 7500
 Tank Use: M.V. FUEL
 Stg: P
 Content: REG UNLEADED
 Number Of Tanks: Not reported

32

**SAN JACINTO CITY YARD
 910 INDUSTRIAL WAY
 SAN JACINTO, CA 92583**

**LUST S101631165
 Cortese N/A
 CA FID UST
 SWEEPS UST**

LUST:

Region: STATE
 Case Type: Soil only
 Cross Street: Not reported
 Enf Type: Not reported
 Funding: Not reported
 How Discovered: Tank Closure
 How Stopped: Not reported
 Leak Cause: UNK
 Leak Source: UNK
 Global Id: T0606500470
 Stop Date: 1996-03-27 00:00:00
 Confirm Leak: 1996-07-30 00:00:00
 Workplan: 1996-03-20 00:00:00
 Prelim Assess: Not reported
 Pollution Char: 1997-06-12 00:00:00
 Remed Plan: Not reported
 Remed Action: Not reported
 Monitoring: Not reported
 Close Date: 1998-10-30 00:00:00
 Discover Date: 1996-07-30 00:00:00
 Enforcement Dt: Not reported
 Release Date: 1996-07-30 00:00:00
 Review Date: 1997-10-02 00:00:00
 Enter Date: 1996-09-16 00:00:00

MAP FINDINGS

Map ID
 Direction
 Distance
 Distance (ft.)Site

EDR ID Number
 EPA ID Number

Database(s)

SAN JACINTO CITY YARD (Continued)

S101631165

MTBE Date: Not reported
 GW Qualifier: Not reported
 Soil Qualifier: Not reported
 Max MTBE GW ppb: Not reported
 Max MTBE Soil ppb: Not reported
 County: 33
 Org Name: Not reported
 Reg Board: Santa Ana Region
 Status: Case Closed
 Chemical: Gasoline
 Contact Person: Not reported
 Responsible Party: CITY OF SAN JACINTO
 RP Address: 312 E. MAIN ST., SAN JACINTO, CA 92583
 Interim: Not reported
 Oversight Prgm: LUST
 MTBE Class: *
 MTBE Conc: 0
 MTBE Fuel: 1
 MTBE Tested: Site NOT Tested for MTBE.Includes Unknown and Not Analyzed.
 Staff: TME
 Staff Initials: UNK
 Lead Agency: Local Agency
 Local Agency: 33000L
 Hydr Basin #: SAN JACINTO (8-5)
 Beneficial: Not reported
 Priority: Not reported
 Cleanup Fund Id: Not reported
 Work Suspended: Not reported
 Local Case #: 960795
 Case Number: 083302871T
 Qty Leaked: Not reported
 Abate Method: Not reported
 Operator: Not reported
 Water System Name: Not reported
 Well Name: Not reported
 Distance To Lust: 0
 Waste Discharge Global ID: Not reported
 Waste Disch Assigned Name: Not reported
 Summary: Not reported

LUST:

Region: 8
 Case Type: Soil only
 Cross Street: Not reported
 Enf Type: Not reported
 Funding: Not reported
 How Discovered: Tank Closure
 How Stopped: Not reported
 Leak Cause: UNK
 Leak Source: UNK
 Global ID: T0606500470
 How Stopped Date: 3/27/1996
 Review Date: 7/30/1996
 Workplan: 3/20/1996
 Prelim Assess: Not reported
 Pollution Char: 6/12/1997
 Remed Plan: Not reported

MAP FINDINGS

Map ID
 Direction
 Distance
 Distance (ft.)Site

EDR ID Number
 EPA ID Number

Database(s)

SAN JACINTO CITY YARD (Continued)

S101631165

Remed Action: Not reported
 Monitoring: Not reported
 Close Date: Not reported
 Discover Date: 7/30/1996
 Enforcement Date: Not reported
 Review Date: 10/2/1997
 Enter Date: 9/16/1996
 MTBE Date: Not reported
 GW Qualifies: Not reported
 Soil Qualifies: Not reported
 Max MTBE GW: Not reported
 Max MTBE Soil: Not reported
 County: Riverside
 Operator: Not reported
 Regional Board: 08
 Facility Status: Pollution Characterization
 Substance: 8006619
 Facility Contact: Not reported
 Interim: Not reported
 Oversight Program: LUST
 Latitude: 33.7842935
 Longitude: -116.9758797
 MTBE Concentration: 0
 MTBE Fuel: 1
 MTBE Tested: NT
 Staff: TME
 Staff Initials: UNK
 Lead Agency: Local Agency
 Local Agency: 33000L
 Hydr Basin #: SAN JACINTO (8-5)
 Beneficial: Not reported
 Priority: Not reported
 Cleanup Fund Id: Not reported
 Work Suspended: Not reported
 Local Case Num: 960795
 Case Number: 083302871T
 Qty Leaked: Not reported
 Abate Method: Not reported
 MTBE Class: *
 Summary: Not reported

LUST:

Region: RIVERSIDE
 Site Closed: Yes
 Employee ID: 22
 Facility ID: 960795
 Case Type: Drinking Water Aquifer affected
 Status: 9

Cortese:

Region: CORTESE
 Facility Addr2: 910 INDUSTRIAL WAY

CA FID UST:

Facility ID: 33007104
 Regulated By: UTNKA

MAP FINDINGS

Map ID
 Direction
 Distance
 Distance (ft.)Site

EDR ID Number
 EPA ID Number

Database(s)

SAN JACINTO CITY YARD (Continued)

S101631165

Regulated ID: Not reported
 Cortese Code: Not reported
 SIC Code: Not reported
 Facility Phone: 7146544041
 Mail To: Not reported
 Mailing Address: 201 E MAIN ST
 Mailing Address 2: Not reported
 Mailing City,St,Zip: SAN JACINTO 92383
 Contact: Not reported
 Contact Phone: Not reported
 DUNs Number: Not reported
 NPDES Number: Not reported
 EPA ID: Not reported
 Comments: Not reported
 Status: Active

SWEEPS UST:

Status: A
 Comp Number: 53970
 Number: 4
 Board Of Equalization: 44-018364
 Ref Date: 11-18-92
 Act Date: 11-18-92
 Created Date: 09-07-89
 Tank Status: A
 Owner Tank Id: 001539
 Swrcb Tank Id: 33-000-053970-000001
 Actv Date: 11-18-92
 Capacity: 7500
 Tank Use: M.V. FUEL
 Stg: P
 Content: REG UNLEADED
 Number Of Tanks: 3

Status: A
 Comp Number: 53970
 Number: 4
 Board Of Equalization: 44-018364
 Ref Date: 11-18-92
 Act Date: 11-18-92
 Created Date: 09-07-89
 Tank Status: A
 Owner Tank Id: 001539
 Swrcb Tank Id: 33-000-053970-000002
 Actv Date: 11-18-92
 Capacity: 10000
 Tank Use: M.V. FUEL
 Stg: P
 Content: REG UNLEADED
 Number Of Tanks: Not reported

Status: A
 Comp Number: 53970
 Number: 4
 Board Of Equalization: 44-018364
 Ref Date: 11-18-92
 Act Date: 11-18-92

MAP FINDINGS

Map ID
 Direction
 Distance
 Distance (ft.)Site

EDR ID Number
 EPA ID Number

Database(s)

SAN JACINTO CITY YARD (Continued)

S101631165

Created Date: 09-07-89
 Tank Status: A
 Owner Tank Id: 001539
 Swrcb Tank Id: 33-000-053970-000003
 Actv Date: 11-18-92
 Capacity: 4000
 Tank Use: M.V. FUEL
 Stg: P
 Content: DIESEL
 Number Of Tanks: Not reported

33

**ARA TRANSPORTATION, INC.
 450 S STATE ST
 SAN JACINTO, CA 92383**

**HIST UST U001575634
 N/A**

HIST UST:

Region: STATE
 Facility ID: 00000032107
 Tank Num: 001
 Container Num: 2
 Year Installed: Not reported
 Tank Capacity: 00007500
 Facility Type: Other
 Other Type: SCHOOL BUS TRANSP.
 Total Tanks: 0002
 Tank Used for: PRODUCT
 Type of Fuel: REGULAR
 Tank Construction: 1/4 inches
 Leak Detection: None
 Contact Name: MARK RASSMUSSEN
 Telephone: 6193208822
 Owner Name: JOHN BORG
 Owner Address: 450 SOUTH STATE STREET
 Owner City,St,Zip: SAN JACINTO, CA 92383

Region: STATE
 Facility ID: 00000032107
 Tank Num: 002
 Container Num: 1
 Year Installed: Not reported
 Tank Capacity: 00007500
 Facility Type: Other
 Other Type: SCHOOL BUS TRANSP.
 Total Tanks: 0002
 Tank Used for: PRODUCT
 Type of Fuel: REGULAR
 Tank Construction: 1/4 inches
 Leak Detection: None
 Contact Name: MARK RASSMUSSEN
 Telephone: 6193208822
 Owner Name: JOHN BORG
 Owner Address: 450 SOUTH STATE STREET
 Owner City,St,Zip: SAN JACINTO, CA 92383

MAP FINDINGS

Map ID
 Direction
 Distance
 Distance (ft.)Site

EDR ID Number

Database(s) EPA ID Number

**34 ACTION RENTALS
 450 N STATE ST
 HEMET, CA 92343**

**HAZNET S101589892
 CA FID UST N/A
 SWEEPS UST**

HAZNET:

Gepaid: CAL000034192
 Contact: MENDELSONH IRA
 Telephone: 0000000000
 Facility Addr2: Not reported
 Mailing Name: Not reported
 Mailing Address: 450 N STATE ST
 Mailing City,St,Zip: HEMET, CA 925432938
 Gen County: Riverside
 TSD EPA ID: CAT080013352
 TSD County: Los Angeles
 Waste Category: Waste oil and mixed oil
 Disposal Method: Recycler
 Tons: .6255
 Facility County: Riverside

Gepaid: CAL000034192
 Contact: MENDELSONH IRA
 Telephone: 0000000000
 Facility Addr2: Not reported
 Mailing Name: Not reported
 Mailing Address: 450 N STATE ST
 Mailing City,St,Zip: HEMET, CA 925432938
 Gen County: Riverside
 TSD EPA ID: CAT080011059
 TSD County: Los Angeles
 Waste Category: Aqueous solution with less than 10% total organic residues
 Disposal Method: Recycler
 Tons: .1668
 Facility County: Riverside

CA FID UST:

Facility ID: 33000535
 Regulated By: UTNKA
 Regulated ID: Not reported
 Cortese Code: Not reported
 SIC Code: Not reported
 Facility Phone: 7146522774
 Mail To: Not reported
 Mailing Address: 450 N STATE ST
 Mailing Address 2: Not reported
 Mailing City,St,Zip: HEMET 92343
 Contact: Not reported
 Contact Phone: Not reported
 DUNs Number: Not reported
 NPDES Number: Not reported
 EPA ID: Not reported
 Comments: Not reported
 Status: Active

SWEEPS UST:

Status: A
 Comp Number: 29756
 Number: 1

MAP FINDINGS

Map ID
 Direction
 Distance
 Distance (ft.)Site

EDR ID Number
 EPA ID Number

Database(s)

ACTION RENTALS (Continued)

S101589892

Board Of Equalization: Not reported
 Ref Date: 05-14-93
 Act Date: 05-14-93
 Created Date: 07-13-90
 Tank Status: A
 Owner Tank Id: Not reported
 Swrcb Tank Id: 33-000-029756-000001
 Actv Date: 05-14-93
 Capacity: 4000
 Tank Use: M.V. FUEL
 Stg: P
 Content: REG UNLEADED
 Number Of Tanks: 2

Status: A
 Comp Number: 29756
 Number: 1
 Board Of Equalization: Not reported
 Ref Date: 05-14-93
 Act Date: 05-14-93
 Created Date: 07-13-90
 Tank Status: A
 Owner Tank Id: Not reported
 Swrcb Tank Id: 33-000-029756-000002
 Actv Date: 05-14-93
 Capacity: 550
 Tank Use: M.V. FUEL
 Stg: P
 Content: DIESEL
 Number Of Tanks: Not reported

**35 CIRCLE K STORE #1271
 697 STATE ST
 SAN JACINTO, CA 92583**

**RCRA-SQG 1000174101
 FINDS CAD981681323
 HIST UST**

RCRAInfo:
 Owner: NOT REQUIRED
 (415) 555-1212
 EPA ID: CAD981681323
 Contact: Not reported
 Classification: Small Quantity Generator
 TSD Activities: Not reported
 Violation Status: No violations found

FINDS:
 Other Pertinent Environmental Activity Identified at Site

RCRAInfo is a national information system that supports the Resource Conservation and Recovery Act (RCRA) program through the tracking of events and activities related to facilities that generate, transport, and treat, store, or dispose of hazardous waste. RCRAInfo allows RCRA program staff to track the notification, permit, compliance, and corrective action activities required under RCRA.