

FORM APPROVED COUNTY COUNSEL
 BY: GREGORY P. PRIAMOS
 DATE: 4/4/16

**SUBMITTAL TO THE BOARD OF SUPERVISORS
 COUNTY OF RIVERSIDE, STATE OF CALIFORNIA**

340 A



FROM: TLMA – Transportation Department

SUBMITTAL DATE:
 April 11, 2016

SUBJECT: Resolution No. 2016-073, Authorizing the Submittal of a Functional Classification Change for Local Streets and Roads within its Jurisdiction to the State of California, Department of Transportation. All Districts; [\$0]

RECOMMENDED MOTION: That the Board of Supervisors:
 1. Adopt Resolution No. 2016-073, Authorizing the submittal of a functional classification change for local streets and roads within its jurisdiction to the State of California, Department of Transportation as shown on the California Roads System (CRS) maps.

BACKGROUND:

Summary

The highway system of the United States consists of over 39 million miles of road. In terms of jurisdictional responsibility, about 21% is under State and Federal control and 79% is under local control of county and local governments. The functional classification of roadways defines the role each element of the roadway network plays in serving the needs of people, from long-distance travel to serving the needs of neighborhood travel.

Patricia Romo
 Assistant Director of Transportation

FINANCIAL DATA	Current Fiscal Year:	Next Fiscal Year:	Total Cost:	Ongoing Cost:	POLICY/CONSENT (Per Exec. Office)
COST	\$ 0	\$ 0	\$ 0	\$ 0	Consent <input type="checkbox"/> Policy <input checked="" type="checkbox"/>
NET COUNTY COST	\$ 0	\$ 0	\$ 0	\$ 0	

SOURCE OF FUNDS: N/A
Budget Adjustment: No
For Fiscal Year: 15/16

C.E.O. RECOMMENDATION:

APPROVE
 BY:
 Tina Grande

County Executive Office Signature

MINUTES OF THE BOARD OF SUPERVISORS

- Positions Added
- Change Order
- A-30
- 4/5 Vote

Prev. Agn. Ref.: 04/02/13, Item 3-11 **District:** All **Agenda Number:**

SUBMITTAL TO THE BOARD OF SUPERVISORS, COUNTY OF RIVERSIDE, STATE OF CALIFORNIA

FORM 11: Resolution No. 2016-073, Authorizing the Submittal of a Functional Classification Change for Local Streets and Roads within its Jurisdiction to the State of California, Department of Transportation. All Districts; [\$0]

DATE: April 11, 2016

PAGE: 2 of 2

BACKGROUND:

Summary (continued)

Functional classification is used by planners and engineers in defining roadway design elements such as speed, capacity and the relationship to existing and future land use. Roads that are included in the Federal Highway Administration Functional Classification inventory become eligible for the use of Federal funds, at such time they may be available.

The County of Riverside Transportation Department is responsible for providing updates of the roadway network functional classification on a regular basis to the California Department of Transportation (Caltrans), including functional classification designations occurring from new construction and changes in designation resulting from modifications, realignments, and local General Plan classification changes.

This functional classification designation is used by the Southern California Association of Governments (SCAG) in their regional travel demand model to identify and differentiate the different roadway types in the regional highway network. SCAG concurs with the changes as shown in Attachment A to Resolution No. 2016-073; and the concurrence letter is attached as Attachment B of the Resolution. The completed package, including the Board Resolution, will be submitted to Caltrans and the Federal Highway Administration (FHWA) for final approval.

Included in this request are existing roads that were recently built or widened, or were previously not shown as functionally classified. In addition, roads that are anticipated to be built within approximately five years are eligible and have been made part of this request to be included in the CRS.

On April 2, 2013 (Agenda Item 3-11), the Board of Supervisors adopted Resolution No. 2013-047, authorizing updates to several roadways in the County of Riverside (County). Resolution No. 2016-073 will authorize submittal of additional classification changes for local streets and roads Countywide, as listed in Attachment A to Resolution No. 2016-073.

Impact on Residents and Businesses

Approval of the requested updates will provide eligibility for federal funding for construction and maintenance of roadways within the County, thereby improving the quality of life.

SUPPLEMENTAL:

Additional Fiscal Information

N/A

ATTACHMENTS:

Resolution No. 2016-073 with Attachment A and B

2
3 RESOLUTION NO. 2016-073

4 AUTHORIZING THE SUBMITTAL OF A FUNCTIONAL CLASSIFICATION CHANGE
5 FOR LOCAL STREETS AND ROADS WITHIN ITS JURISDICTION
6 TO THE STATE OF CALIFORNIA, DEPARTMENT OF TRANSPORTATION
7

8 WHEREAS, local agencies are responsible for initiating requests for changes to the functional
9 classifications of streets and roads within their respective jurisdictions as they appear on the California
10 Road System (CRS) maps; and

11 WHEREAS, the County of Riverside (County) receives State and Federal road improvement and
12 maintenance funding based on street and road functional classification; and

13 WHEREAS the County of Riverside Transportation Department has identified the need to change
14 certain roadway classifications or add newly planned roadways as identified in Attachment A;

15 NOW, THEREFORE, BE IT RESOLVED, DETERMINED AND ORDERED by the Board of
16 Supervisors of the County of Riverside, in regular session assembled on _____, 2016 in the
17 meeting room of the Board of Supervisors (Board), located on the 1st floor of the County Administrative
18 Center, 4080 Lemon Street, Riverside, California, that the Board hereby approves the submittal of the
19 Functional Classification Change for local streets and roads within its jurisdiction to the State of California,
20 Department of Transportation as recommended by the Director of the County of Riverside Transportation
21 and Land Management Agency.

22 SEE ATTACHMENTS A AND B HERETO AND MADE A PART HEREOF; and

23 BE IT FURTHER RESOLVED, that the forgoing resolution was properly adopted by the Board on
24 behalf of the County at a regular meeting of the Riverside County Board of Supervisors held on
25 _____, 2016.
26
27
28

FORM APPROVED COUNTY COUNSEL
BY: *Karsha A. Veeby* 4/13/16
MARSHA L. VICTOR DATE

ATTACHMENT A

Functional Classification Change Form

Functional Classification Change Request Form

Functional Classification Codes	
█ Interstate	1
█ Other Freeways or Expressways	2
█ Other Principal Arterial	3
█ Minor Arterial	4
█ Major Collector	5
█ Minor Collector	6
█ Local	7

Submitted by: _____ County of Riverside

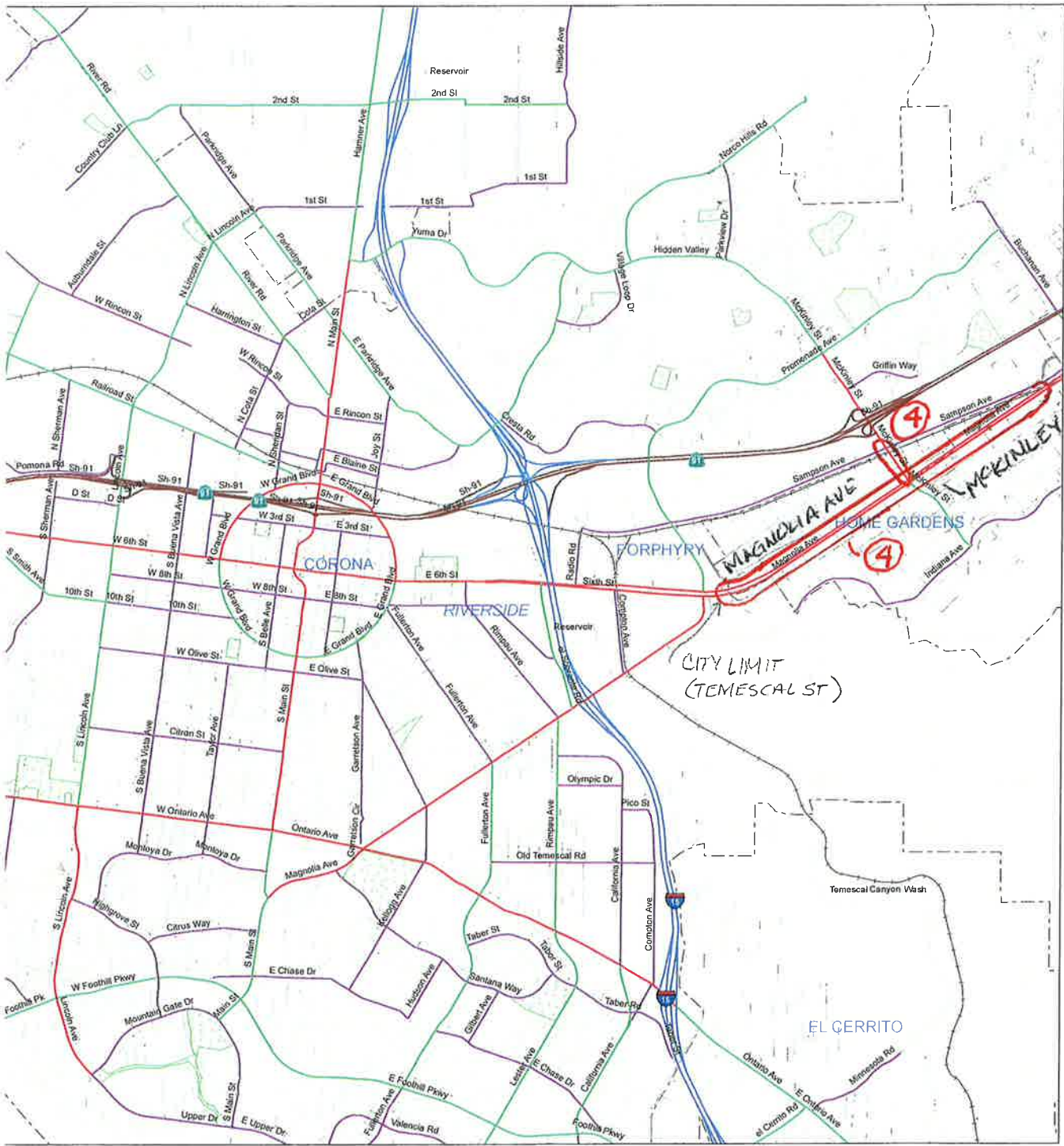
Date: _____ 7/16/14

Click on any column heading for instructions.

CRS Map Number	Coordinate	County	CT District	Jurisdiction	Change/ New/ Delete	Road	From	To	(From) Class	(To) New Class	Length (mi)	Number of Through Lanes	AADT
14V45	H6	RIV	8	County of Riverside	Change	Magnolia Avenue	425' East of Temescal Street	City limit	3	4	1.937	4	21,000
14V45	J4	RIV	8	County of Riverside	Change	McKinley Street	Sampson Avenue	Magnolia Avenue	3	4	0.203	4	24,000
15V41	K5	RIV	8	County of Riverside	Change	Van Buren Boulevard	West City limit	Dauchy Avenue	3	4	4.830	4	42,000
15V42	A5	RIV	8	County of Riverside	Change	Van Buren Boulevard	included in above						
15V41	J4	RIV	8	County of Riverside	Change	Van Buren Boulevard	Barton Road	I-215 NB Ramp	3	4	2.750	6	44,000
15V43	A4	RIV	8	County of Riverside	Change	Van Buren boulevard	included in above						
15V42	D6	RIV	8	County of Riverside	Change	Washington Street	Mariposa Road	Harley John Road	7	4	0.530	2	5,700
15V42	C8	RIV	8	County of Riverside	Change	Harley John Road	Mockingbird Canyon Road	Cajalco Road	7	4	1.894	2	4,900
15V42	D10	RIV	8	County of Riverside	Change	Cajalco Road	El Sobrante Road	I-215	5	4	6.938	2	22,000
15V43	A10	RIV	8	County of Riverside	Change	Cajalco Road	included in above						
15V52	D10	RIV	8	County of Riverside	Change	Cajalco Road	included in above						
15V43	D7	RIV	8	County of Riverside	Change	Harley Knox Boulevard	Harvill Avenue	I-215 NB Ramp	7	4	0.235	4	
15V43	D7	RIV	8	County of Riverside	Change	Harvill Avenue	Harley Knox BI	I-215/Nuevo Rd	7	5	4.704	4	7,080
15V53	F1	RIV	8	County of Riverside	Change	Harvill Avenue	included in above						
15V54	B5	RIV	8	County of Riverside	Change	Nuevo Road	Dunlap Dr	Menifee Road	5	4	2.000	2	9,000
15V54	F5	RIV	8	County of Riverside	Change	Nuevo Road	Menifee Road	Montgomery Avenue	7	5	1.690	2	8,000
15V54	H4	RIV	8	County of Riverside	Change	Montgomery Avenue	Nuevo Road	Hansen Avenue	7	5	0.736	2	3,200
15V54	J4	RIV	8	County of Riverside	Change	Hansen Avenue	Montgomery Avenue	Ramona Expressway	7	5	2.205	2	3,500
15V44	J10	RIV	8	County of Riverside	Change	Hansen Avenue	included in above						
15V54	G8	RIV	8	County of Riverside	Delete	Briggs Road	Mapes Road	Gunther Road	5	-	1.000	2	
15V33	G2	RIV	8	County of Riverside	Change	Reche Vista Drive	800' N of Country Road	Reche Canyon Road	7	4	1.028	2	17,900
15V45	K9	RIV	8	County of Riverside	Change	Gilman Springs Road	SR 79	State Street	3	5	2.420	2	17,000
16V41	A9	RIV	8	County of Riverside	Change	Gilman Springs Road	included in above						

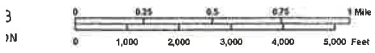
CRS Map Sheet Number	The five digit alphanumeric code that appears in the lower right-hand corner of the CRS map
Coordinate	The coordinate derived from the grid system on the CRS map. These are found along the edges of the map. This is a two or three digit entry with the first digit an alpha character (A-K) from the horizontal axis and the second digit (or second and third digits if 10) a numeric character (1-10) from the vertical axis.
CT District	The Caltrans District
County	County Abbreviation: Ala, Alp, Ama, But, Cal, Col, CC, DN, ED, Fre, Gle, Hum, Imp, Iny, Ker, Kin, Lak, Las, LA, Mad, Mm, Mpa, Men, Mer, Mod, Mno, Mon, Nap, Nev, Ora, Pla, Piu, Riv, Sac, SBF, SBD, SD, SF, SJ, SLO, SM, SB, SCI, SCR, Sha, Sie, Sis, Sol, Son, Sta, Sut, Teh, Tri, Tul, Tuo, Ven, Yol, Yub
Jurisdiction	The full City or County name that has jurisdiction. (Upper & lower case).
Change	Enter "Change" to change the functional classification or the limits of an existing roadway segment.
New	Enter "New" to add a new roadway segment.
Delete	Enter "Delete" to delete an existing roadway segment.
Road	The street name
From	The beginning point of the record
To	The ending point of the record
(From) Class	The existing Functional Classification Code. The valid codes are as listed on the bottom of the form.
(To) New Class	The desired Functional Classification Code. The valid codes are as listed on the bottom of the form.
Length (mi)	Section Length Record to the nearest .001 mile if possible, or as close as is known.
Number of Through Lanes	The total number of through lanes in both directions Don't count turn lanes, auxiliary lanes or parking lanes
AADT	The Annual Average Daily Traffic (AADT). The Annual Average Daily Traffic (AADT) is required, however, a traffic count is not necessary. Please input the latest figure available or an engineer's estimate based on local knowledge.

SEE MAP 14V35



SEE MAP 15V41

SEE MAP 14V55



STATE OF CALIFORNIA
DEPARTMENT OF TRANSPORTATION
In Cooperation With The
FEDERAL HIGHWAY ADMINISTRATION
AND LOCAL AGENCIES



COUNTY BOUNDARY
CITY BOUNDARY
RAILROAD

SIGN ROUTES
INTERSTATE
U.S.
STATE

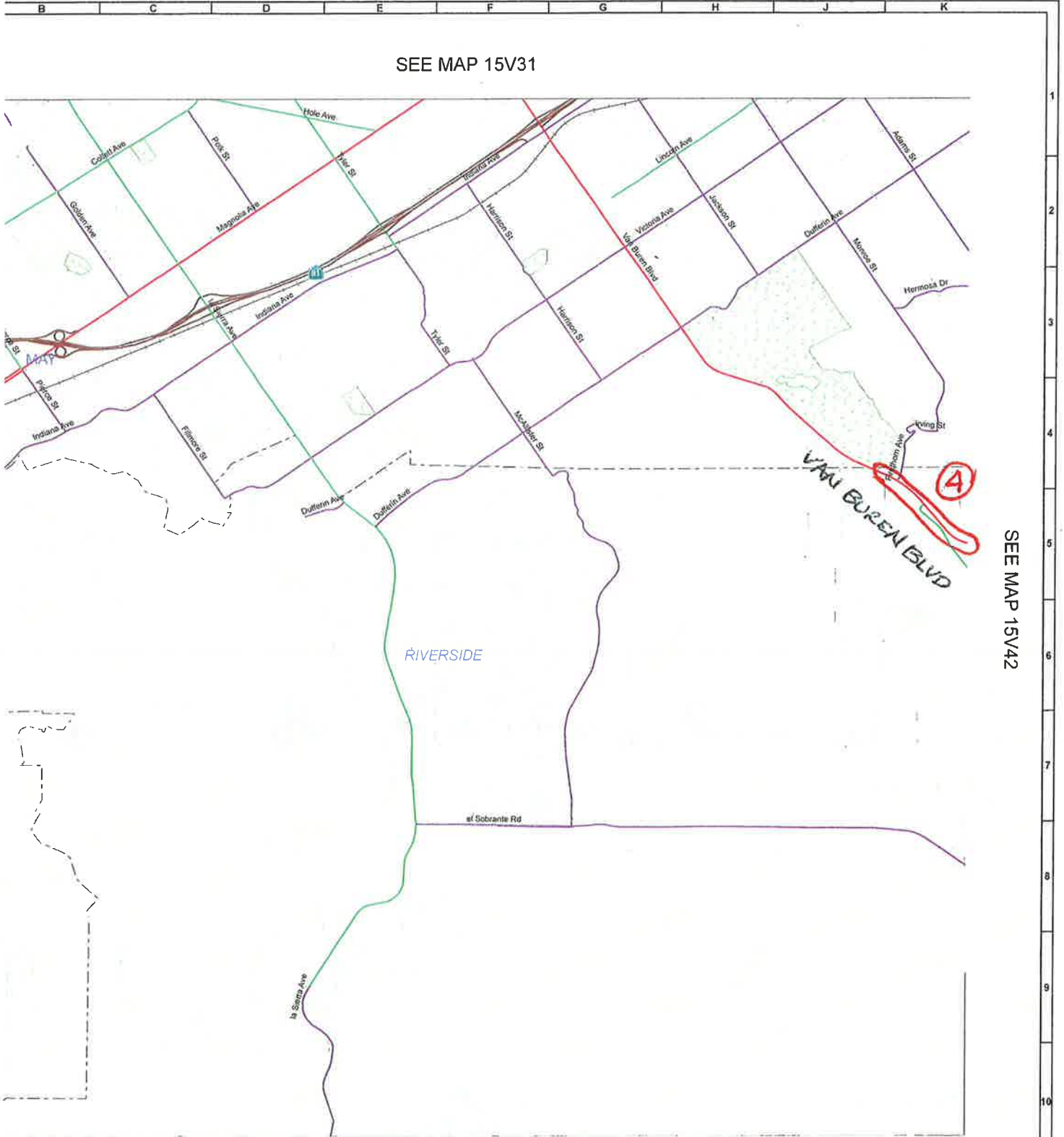
FUNCTIONAL CLASSIFICATION SYSTEM

INTERSTATE	1
OTHER FWY OR EXHWY	2
OTHER PRINCIPAL ARTERIAL	3
MINOR ARTERIAL	4
MAJOR COLLECTOR	5
MINOR COLLECTOR	6
LOCAL	7



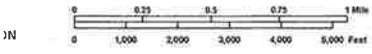
MAP 14V45

SEE MAP 15V31



SEE MAP 15V42

SEE MAP 15V51



STATE OF CALIFORNIA
 DEPARTMENT OF TRANSPORTATION
 In Cooperation With The
 FEDERAL HIGHWAY ADMINISTRATION
 AND LOCAL AGENCIES



--- COUNTY BOUNDARY
 - - - - - CITY BOUNDARY
 KALKDAS

SIGN ROUTES
 INTERSTATE
 U.S.
 STATE
 COUNTY

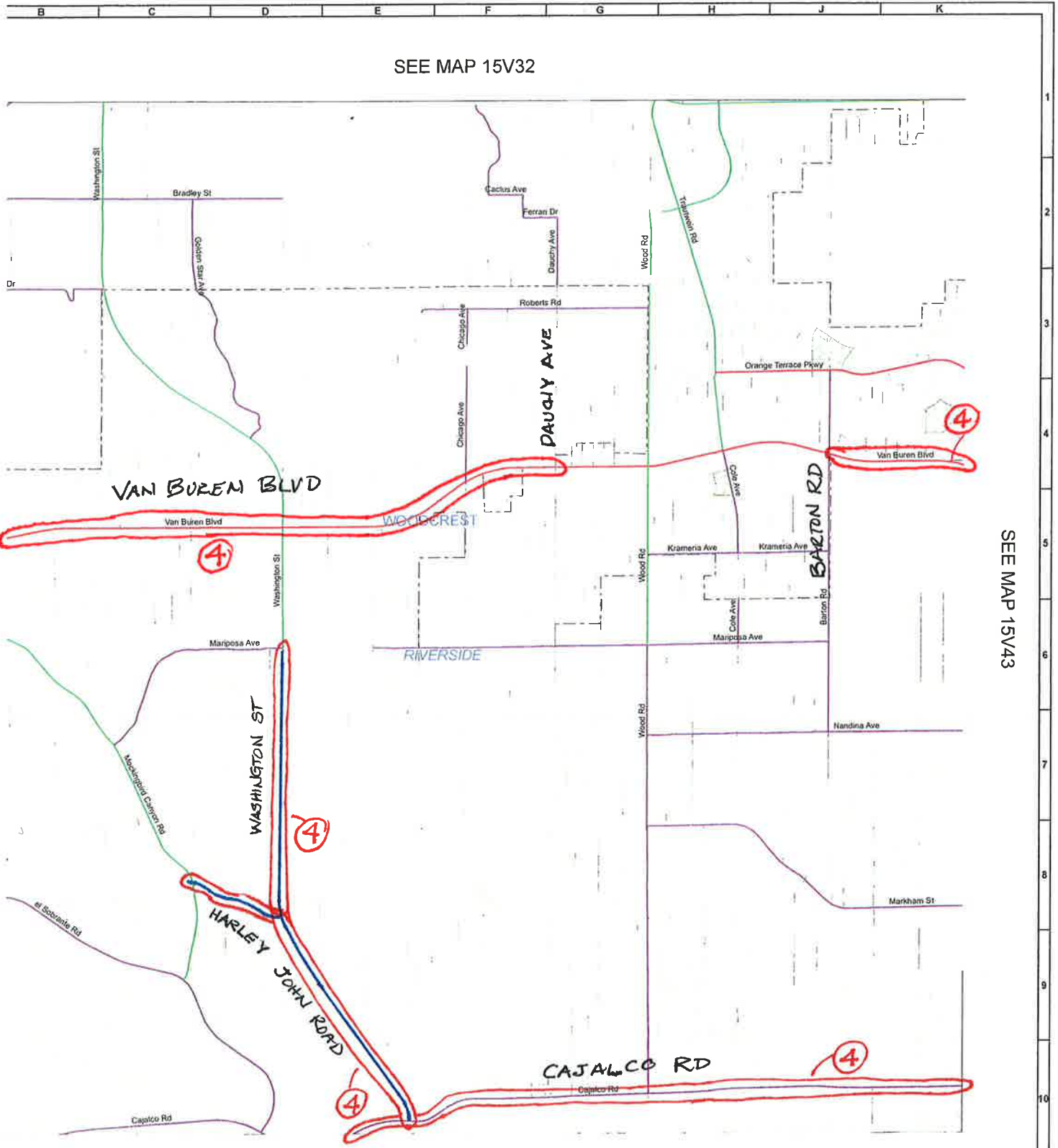
FUNCTIONAL CLASSIFICATION SYSTEM

INTERSTATE	1	
OTHER FWY OR EXFWY	2	
OTHER PRINCIPAL ARTERIAL	3	
MINOR ARTERIAL	4	
MAJOR COLLECTOR	5	
MINOR COLLECTOR	6	
LOCAL	7	



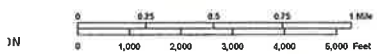
MAP 15V41

SEE MAP 15V32



SEE MAP 15V43

SEE MAP 15V52



STATE OF CALIFORNIA
DEPARTMENT OF TRANSPORTATION
In Cooperation With the
FEDERAL HIGHWAY ADMINISTRATION
AND LOCAL AGENCIES



--- COUNTY ADJUDGARY
- - - CITY BOUNDARY
RAILROAD

SIGN ROUTES
 INTERSTATE
 U.S.
 STATE
 COUNTY

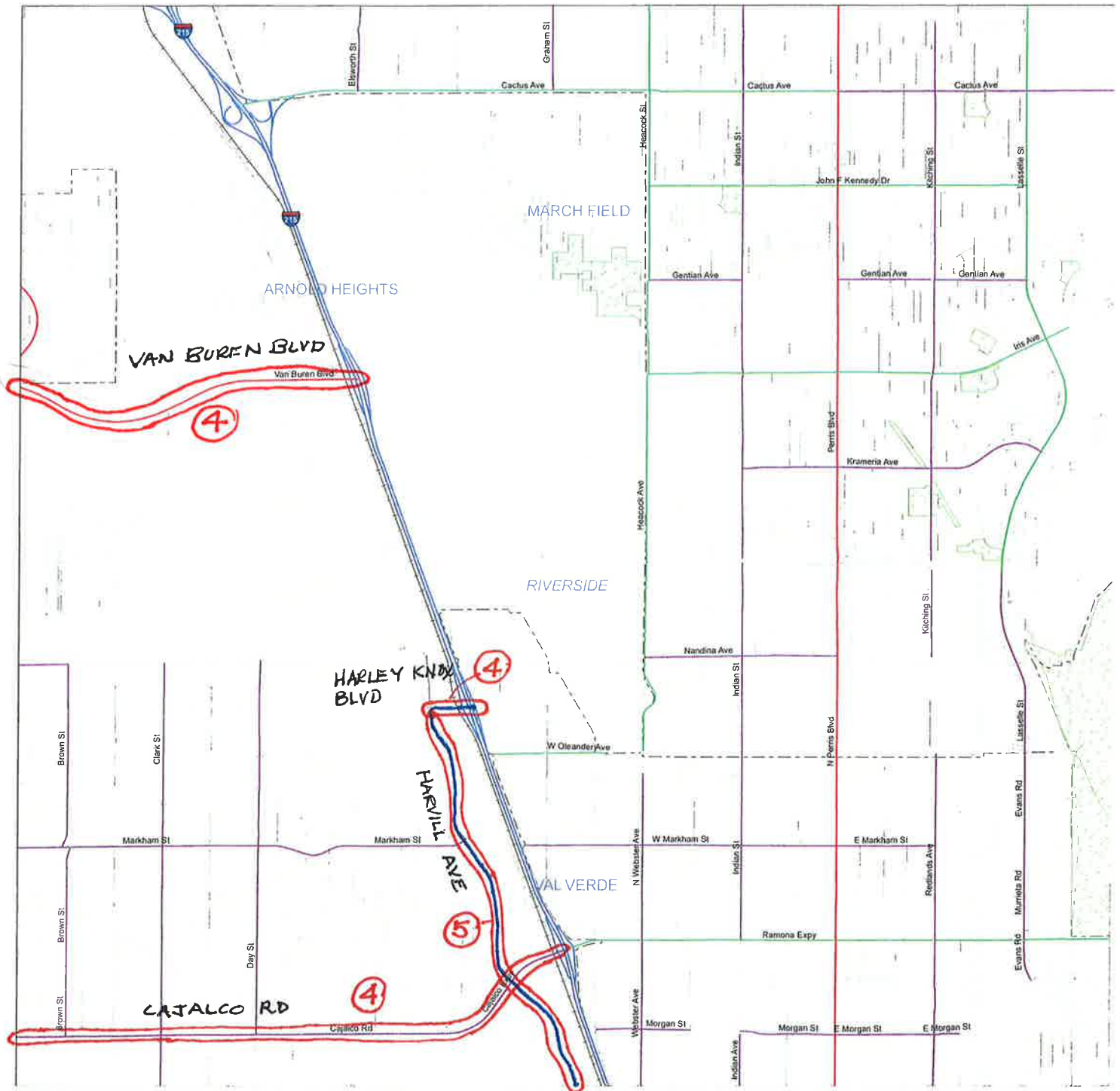
FUNCTIONAL CLASSIFICATION SYSTEM

INTERSTATE	1
OTHER FWY OR EXPFWY	2
OTHER PRINCIPAL ARTERIAL	3
MINOR ARTERIAL	4
MAJOR COLLECTOR	5
MINOR COLLECTOR	6
LOCAL	7



MAP 15V42

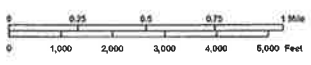
SEE MAP 15V43 ~~33~~



SEE MAP 15V44

SEE MAP ~~15V44~~ 15V53

Date 8/5/11
 HIGHWAY ADMINISTRATION
Richard P. Mammiano
 ENT P. MAMMIANO
 ION ADMINISTRATOR



STATE OF CALIFORNIA
 DEPARTMENT OF TRANSPORTATION
 In Cooperation With The
 FEDERAL HIGHWAY ADMINISTRATION
 AND LOCAL AGENCIES



--- COUNTY BOUNDARY
 - - - CITY BOUNDARY
 = = = RAILROAD

SIGN ROUTES
 INTERSTATE
 U.S.
 STATE
 COUNTY

FUNCTIONAL CLASSIFICATION SYSTEM

INTERSTATE	1	
OTHER FWY OR EXPWY	2	
OTHER PRINCIPAL ARTERIAL	3	
MINOR ARTERIAL	4	
MAJOR COLLECTOR	5	
MINOR COLLECTOR	6	
LOCAL	7	



MAP 15V43

SEE MAP 15V42

4

Gawwin Rd
Gawwin Rd
Gawwin Rd
Gawwin Rd

Lake Mathews Dr

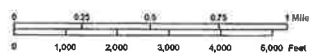
RIVERSIDE

Santa Rosa Mine Rd

El Tico Rd

SEE MAP 15V53

SEE MAP 15W12



STATE OF CALIFORNIA
DEPARTMENT OF TRANSPORTATION
In Cooperation With The
FEDERAL HIGHWAY ADMINISTRATION
AND LOCAL AGENCIES



COUNTY BOUNDARY
CITY BOUNDARY
RAILROAD

SIGN ROUTES
INTERSTATE
U.S.
STATE
COUNTY

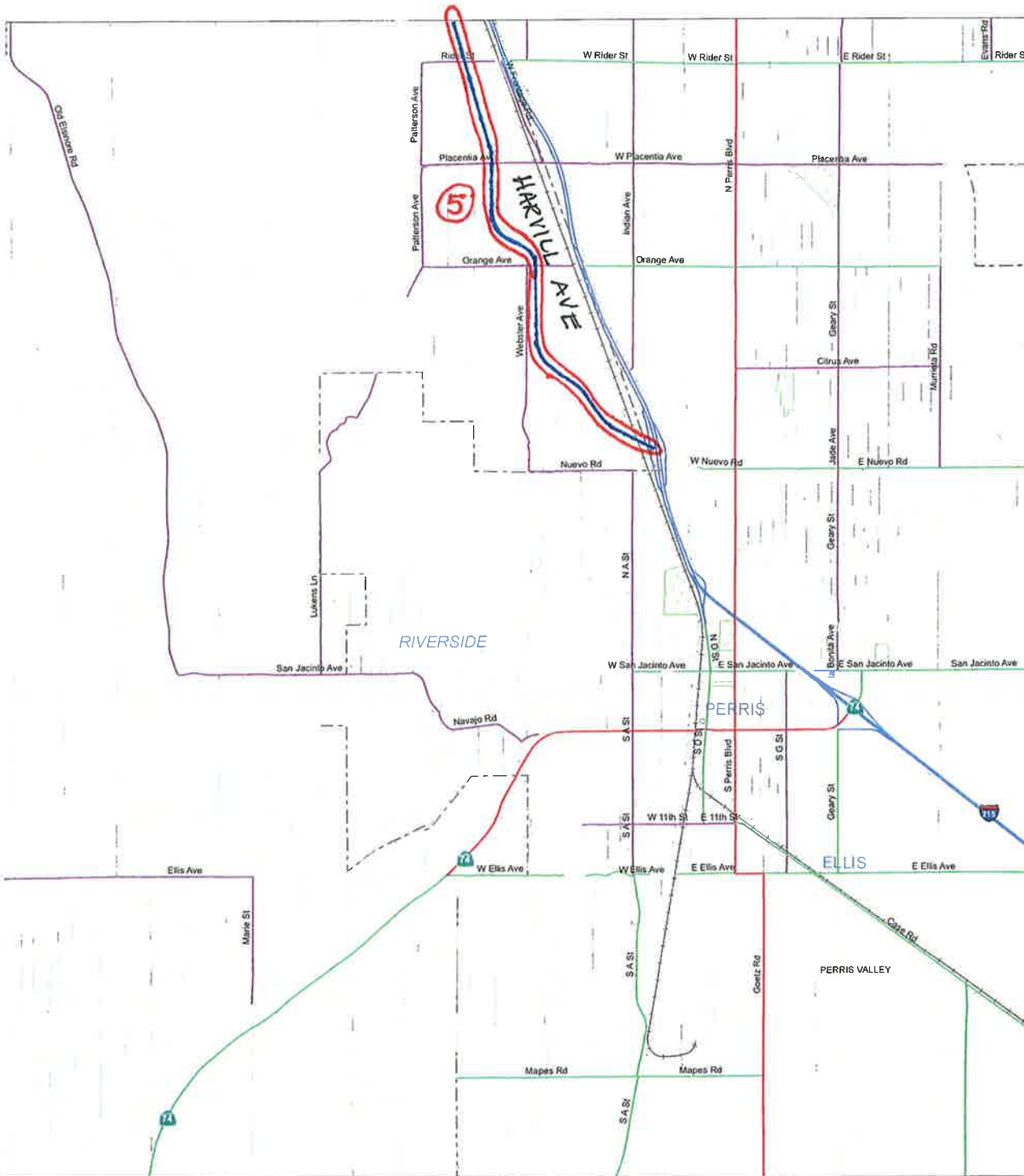
FUNCTIONAL CLASSIFICATION SYSTEM

INTERSTATE	1	Blue line
OTHER FWY OR EXPWY	2	Red line
OTHER PRINCIPAL ARTERIAL	3	Orange line
MINOR ARTERIAL	4	Yellow line
MAJOR COLLECTOR	5	Green line
MINOR COLLECTOR	6	Light green line
LOCAL	7	Dark green line



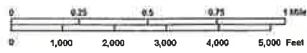
MAP 15V52

SEE MAP 15V43

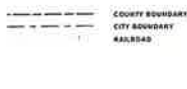


SEE MAP 15V54

SEE MAP 15W13



STATE OF CALIFORNIA
DEPARTMENT OF TRANSPORTATION
In Cooperation With
FEDERAL HIGHWAY ADMINISTRATION
AND LOCAL AGENCIES



SIGN ROUTES



FUNCTIONAL CLASSIFICATION SYSTEM

INTERSTATE	1
OTHER FWY OR EXPWY	2
OTHER PRINCIPAL ARTERIAL	3
MINOR ARTERIAL	4
MAJOR COLLECTOR	5
MINOR COLLECTOR	6
LOCAL	7



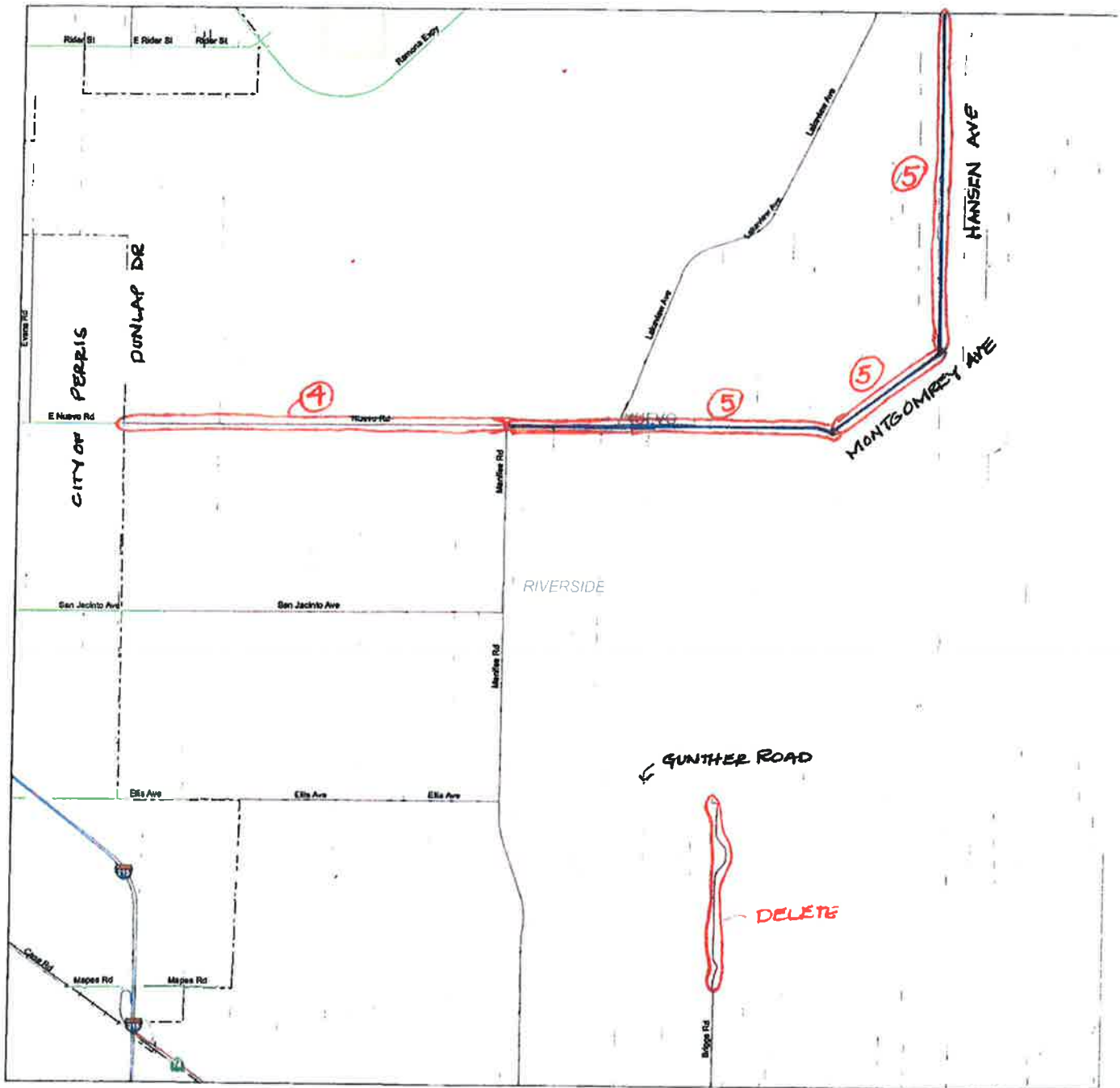
MAP 15V53

A B C D E F G H J K

SEE MAP 15V44

SEE MAP 15V53

SEE MAP 15V55



SEE MAP 15W14

ED Date 8/5/11
 HIGHWAY ADMINISTRATION
Robert Rose
 ROBERT P. MAMMARD
 VISION ADMINISTRATOR



STATE OF CALIFORNIA
 DEPARTMENT OF TRANSPORTATION
 In cooperation with THE
 FEDERAL HIGHWAY ADMINISTRATION
 AND LOCAL AGENCIES



SIGN ROUTES
 COUNTY BOUNDARY
 CITY BOUNDARY
 SANJACINTO

SIGN ROUTES
 STATEWIDE
 U.S.
 STATE
 COUNTY

FUNCTIONAL CLASSIFICATION SYSTEM

STATEWIDE	1
OTHER FWY OR EXPWY	2
OTHER PRINCIPAL ARTERIAL	3
MINOR ARTERIAL	4
MAJOR COLLECTOR	5
MINOR COLLECTOR	6
LOCAL	7

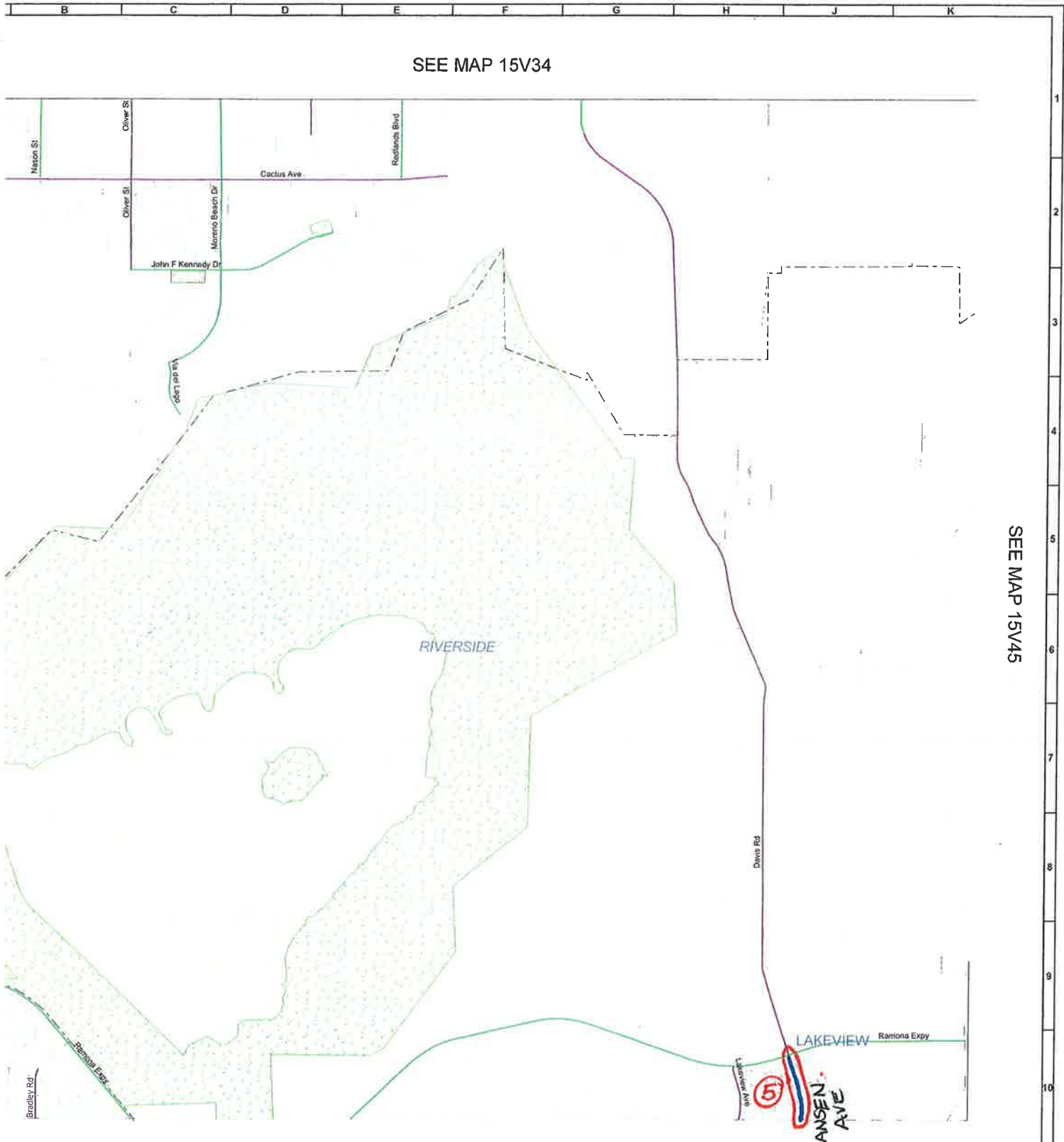


MAP 15V64

A B C D E F G H J K

Riverside CALIFORNIA ROAD 8Y9TE

SEE MAP 15V34



SEE MAP 15V45

SEE MAP 15V54



11
ATION
R

STATE OF CALIFORNIA
DEPARTMENT OF TRANSPORTATION
IN COOPERATION WITH THE
FEDERAL HIGHWAY ADMINISTRATION
AND LOCAL AGENCIES



--- COUNTY BOUNDARY
--- CITY BOUNDARY
--- RAILROAD

- SIGN ROUTES**
- INTERSTATE
 - U.S.
 - STATE
 - COUNTY

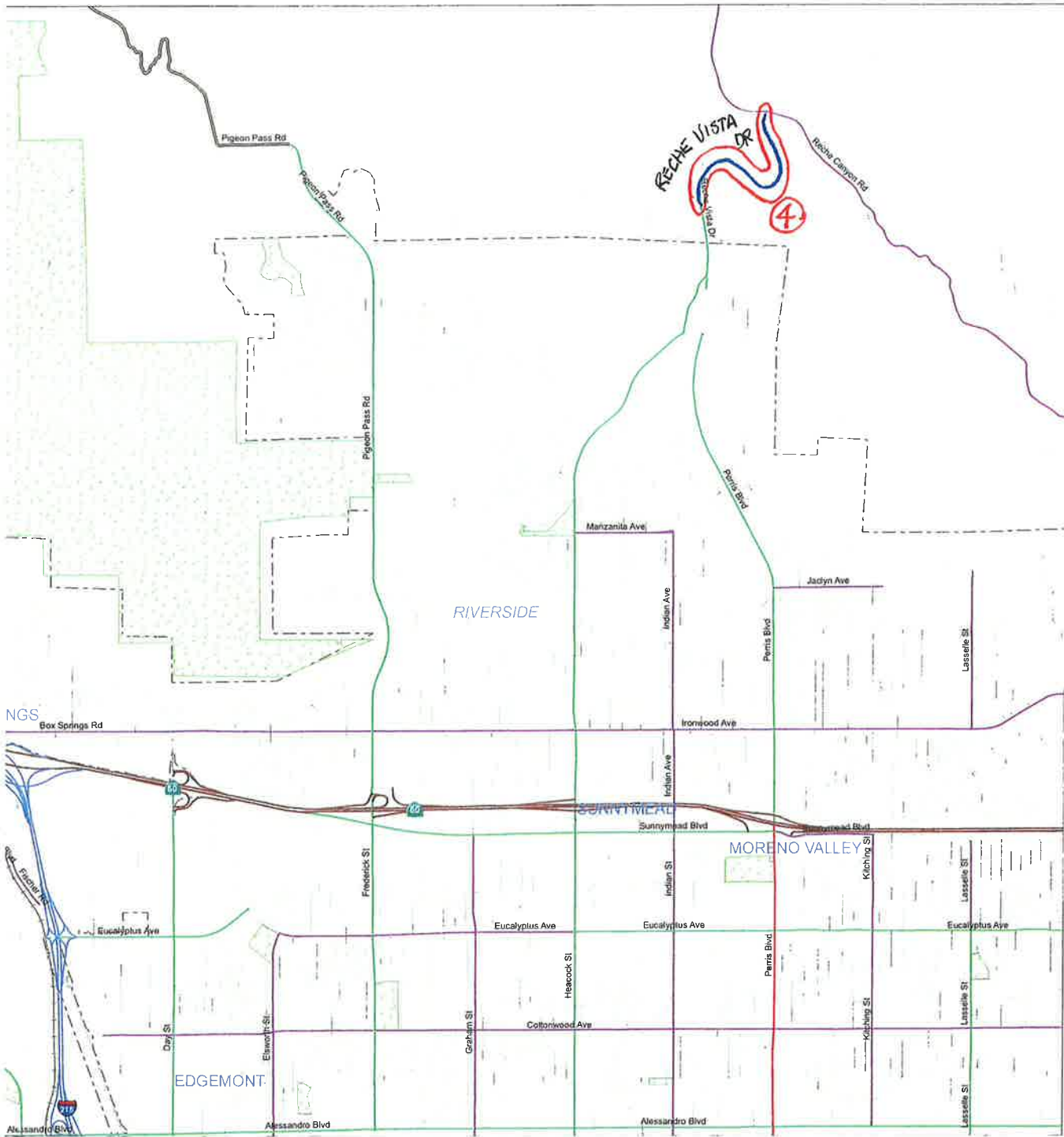
FUNCTIONAL CLASSIFICATION SYSTEM

INTERSTATE	1
OTHER FVW OR EXPWY	2
OTHER PRINCIPAL ARTERIAL	3
MINOR ARTERIAL	4
MAJOR COLLECTOR	5
MINOR COLLECTOR	6
LOCAL	7



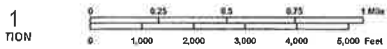
MAP 15V44

SEE MAP 15V23



SEE MAP 15V34

SEE MAP 15V43



1
TION



STATE OF CALIFORNIA
DEPARTMENT OF TRANSPORTATION
In Cooperation With The
FEDERAL HIGHWAY ADMINISTRATION
AND LOCAL AGENCIES



COUNTY BOUNDARY
CITY BOUNDARY
RAILROAD

SIGN ROUTES

- INTERSTATE
- U.S.
- STATE
- COUNTY

FUNCTIONAL CLASSIFICATION SYSTEM

INTERSTATE	1	
OTHER FWY OR EXPWY	2	
OTHER PRINCIPAL ARTERIAL	3	
MINOR ARTERIAL	4	
MAJOR COLLECTOR	5	
MINOR COLLECTOR	6	
LOCAL	7	



MAP 15V33

SEE MAP 15V35

SEE MAP 16V41

RIVERSIDE

GILMAN SPRINGS RD

State SH-78

5

Ramona Expy

SEE MAP 15V55



STATE OF CALIFORNIA
 DEPARTMENT OF TRANSPORTATION
 In Cooperation With The
 FEDERAL HIGHWAY ADMINISTRATION
 AND LOCAL AGENCIES



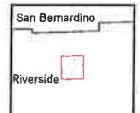
--- COUNTY BOUNDARY
 - - - - - CITY BOUNDARY
 RAJARAS

SIGN ROUTES

- INTERSTATE
- U.S.
- STATE
- COUNTY

FUNCTIONAL CLASSIFICATION SYSTEM

INTERSTATE	1	
OTHER FWY OR EXPWY	2	
OTHER PRINCIPAL ARTERIAL	3	
MINOR ARTERIAL	4	
MAJOR COLLECTOR	5	
MINOR COLLECTOR	6	
LOCAL	7	



MAP 15V45

SEE MAP 16V31

SEE MAP 16V42

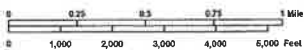
RIVERSIDE

GILMAN SPRINGS ROAD

GILMAN HOT SPRINGS

5

Date 8/5/11
HIGHWAY ADMINISTRATION
John P. Mammato
ADMINISTRATOR



STATE OF CALIFORNIA
DEPARTMENT OF TRANSPORTATION
IN COOPERATION WITH THE
FEDERAL HIGHWAY ADMINISTRATION
AND LOCAL AGENCIES



SEE MAP 16V51

COUNTY BOUNDARY
CITY BOUNDARY
RAILROAD

SIGN ROUTES
INTERSTATE
U.S.
STATE
COUNTY

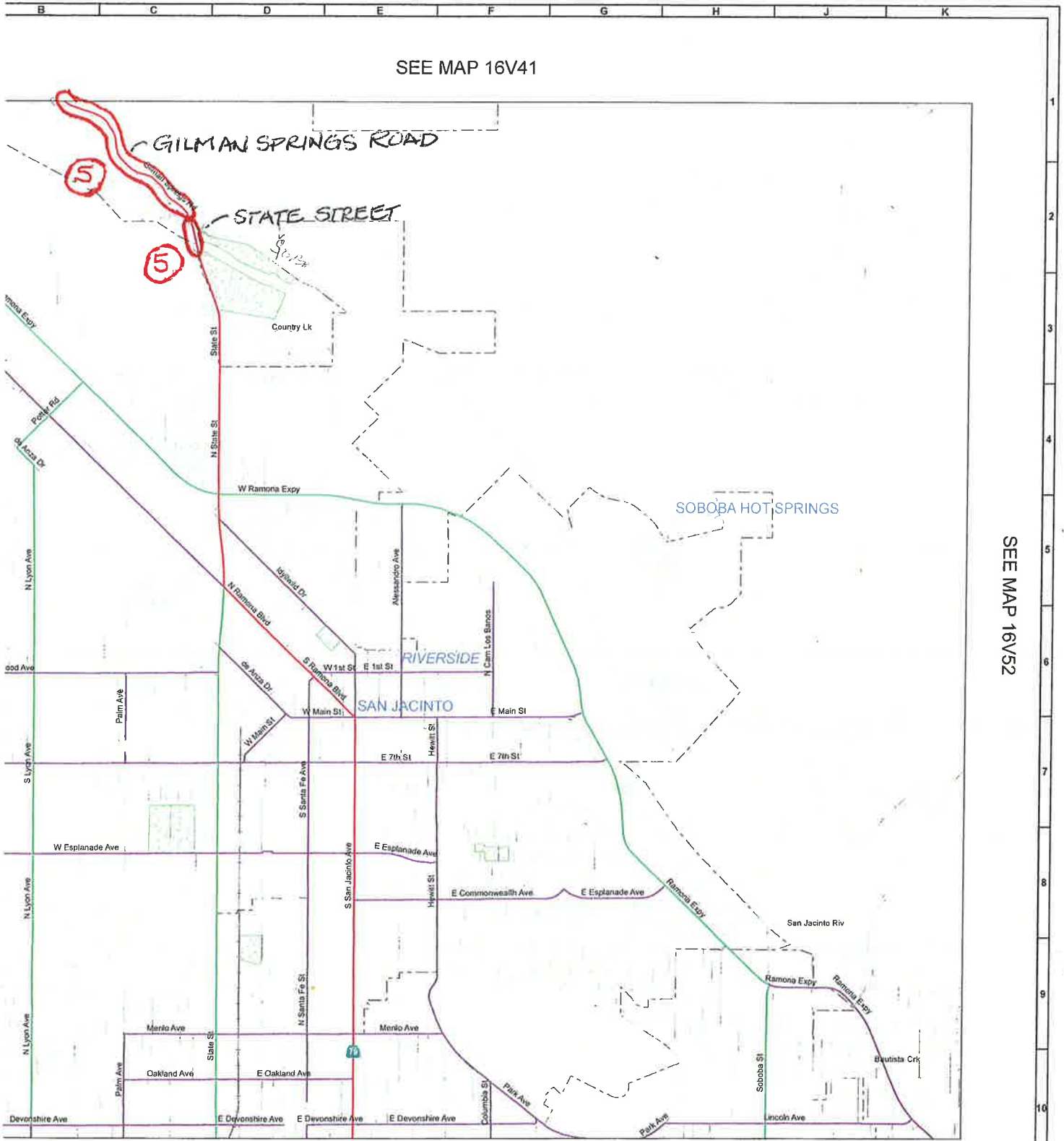
FUNCTIONAL CLASSIFICATION SYSTEM

INTERSTATE	1
OTHER FWY OR EXFPWY	2
OTHER PRINCIPAL ARTERIAL	3
MINOR ARTERIAL	4
MAJOR COLLECTOR	5
MINOR COLLECTOR	6
LOCAL	7



MAP 16V41

SEE MAP 16V41



SEE MAP 16V52

SEE MAP 16W11



STATE OF CALIFORNIA
DEPARTMENT OF TRANSPORTATION
In Cooperation With The
FEDERAL HIGHWAY ADMINISTRATION
AND LOCAL AGENCIES



--- EQUITY BOUNDARY
--- CITY BOUNDARY
--- RAILROAD

SIGN ROUTES
 INTERSTATE
 U.S.
 STATE

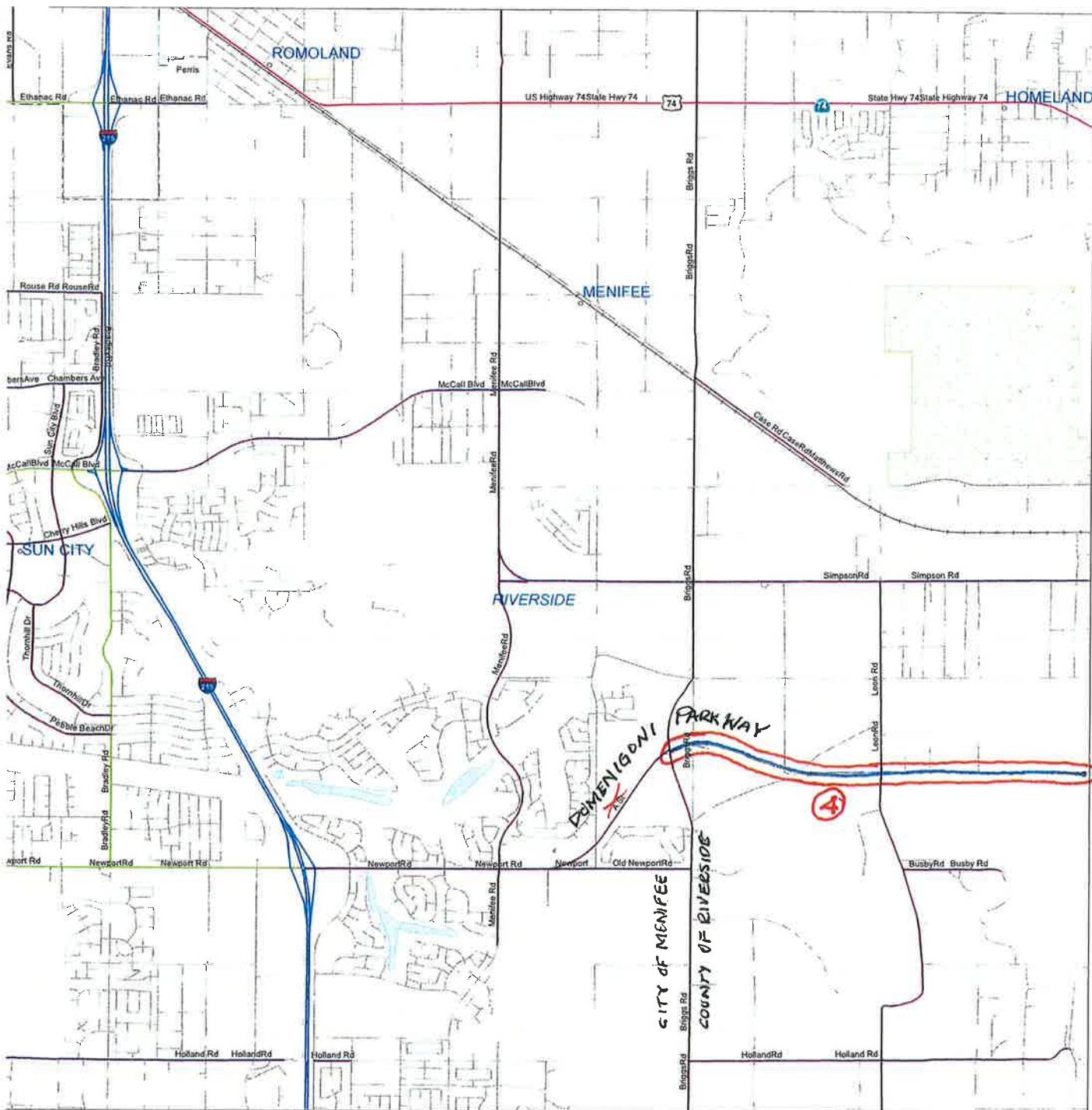
FUNCTIONAL CLASSIFICATION SYSTEM

INTERSTATE	1
OTHER FVW OR EXPVW	2
OTHER PRINCIPAL ARTERIAL	3
MINOR ARTERIAL	4
MAJOR COLLECTOR	5
MINOR COLLECTOR	6
LOCAL	7



MAP 16V51

SEE MAP 15V54



SEE MAP 15W15

8/5/11
 ADMINISTRATION
L. Han
 MANAGER
 STRATEGIC



STATE OF CALIFORNIA
 DEPARTMENT OF TRANSPORTATION
 IN COOPERATION WITH THE
 FEDERAL HIGHWAY ADMINISTRATION
 AND LOCAL AGENCIES



SEE MAP 15W24

--- COUNTY BOUNDARY
 - - - CITY BOUNDARY
 = = = = = RAILROAD

SIGN ROUTES
 INTERSTATE
 U.S.
 STATE
 COUNTY

FUNCTIONAL CLASSIFICATION SYSTEM

INTERSTATE	1	
OTHER FVMT OR EXPVY	2	
OTHER PRINCIPAL ARTERIAL	3	
MAJOR ARTERIAL	4	
STATE	5	
MINOR COLLECTOR	6	
LOCAL	7	

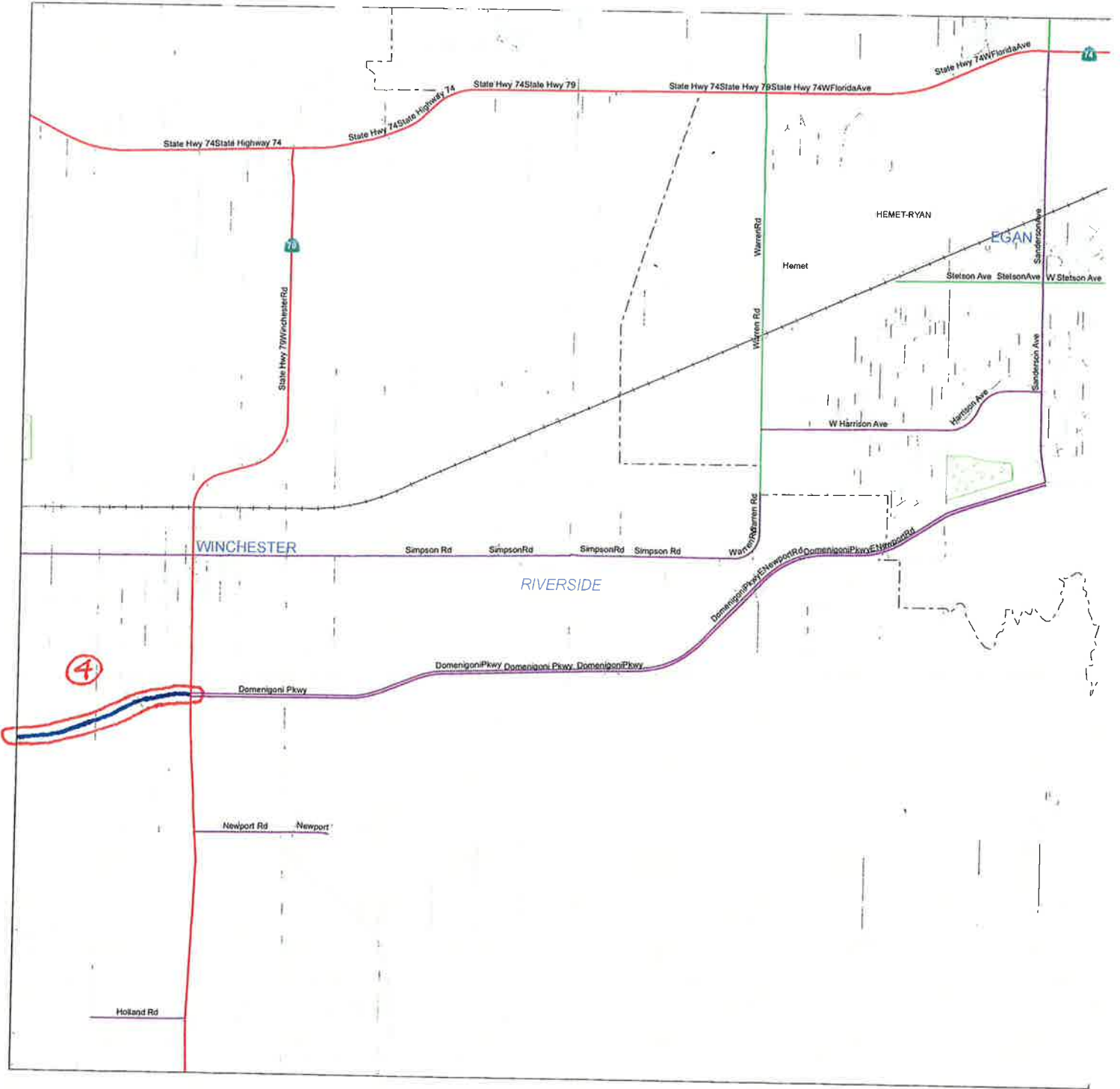


MAP 15W14

SEE MAP 15V55

SEE MAP 15W14

SEE MAP 16W11



Date 8/5/11
 HIGHWAY ADMINISTRATION
P. Mammamo
 CENT P. MAMMAMO
 ISSION ADMINISTRATOR



SEE MAP 15W

STATE OF CALIFORNIA
 DEPARTMENT OF TRANSPORTATION
 In Cooperation With The
 FEDERAL HIGHWAY ADMINISTRATION
 AND LOCAL AGENCIES



--- COUNTY BOUNDARY
 - - - - - CITY BOUNDARY
 - - - - - RAILROAD

SIGN ROUTES



FUNCTIONAL CLASSIFICATION SYSTEM

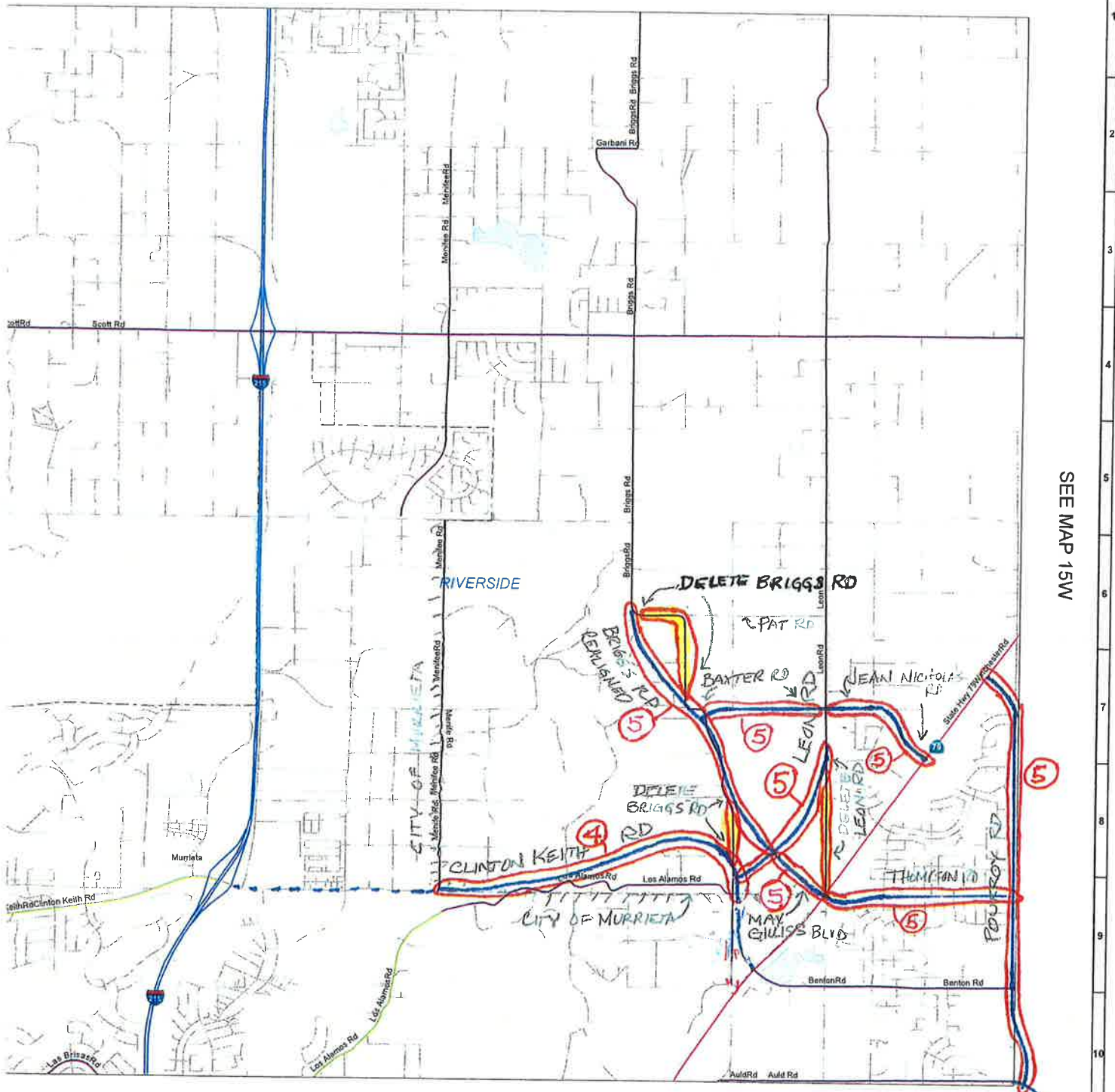
INTERSTATE	1
OTHER FWY OR EXPWY	2
OTHER PRINCIPAL ARTERIAL	3
MINOR ARTERIAL	4
MAJOR COLLECTOR	5
MINOR COLLECTOR	6
LOCAL	7



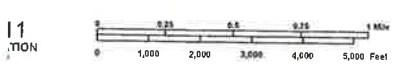
MAP 15W15

Riverside CALIFORNIA ROAD SYSTEM

SEE MAP 15W14



SEE MAP 15W



SEE MAP 15W34

STATE OF CALIFORNIA
DEPARTMENT OF TRANSPORTATION
In Cooperation With The
FEDERAL HIGHWAY ADMINISTRATION
AND LOCAL AGENCIES



--- COUNTY BOUNDARY
--- CITY BOUNDARY
--- RAILROAD

SIGN ROUTES
 INTERSTATE
 U.S.
 STATE
 COUNTY

FUNCTIONAL CLASSIFICATION SYSTEM

INTERSTATE	1
OTHER FWY OR EXPRV	2
OTHER PRINCIPAL ARTERIAL	3
MINOR ARTERIAL	4
MAJOR COLLECTOR	5
MINOR COLLECTOR	6
LOCAL	7

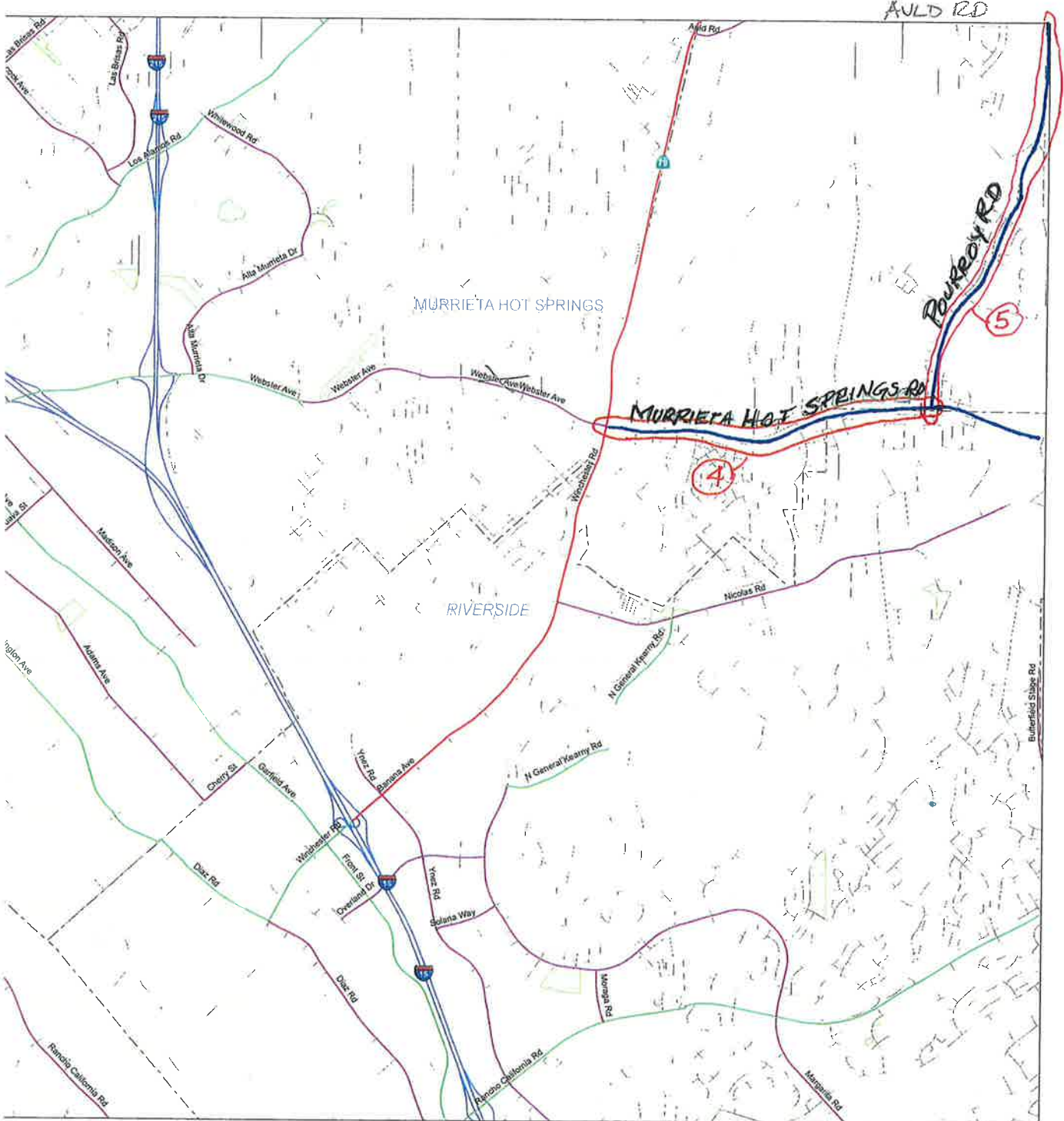


MAP 15W24

Riverside CALIFORNIA ROAD SYSTEM

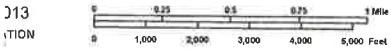
SECTION TO DELETE

SEE MAP 15W24



SEE MAP 15W

SEE MAP 15W44



STATE OF CALIFORNIA
DEPARTMENT OF TRANSPORTATION
In Cooperation With The
FEDERAL HIGHWAY ADMINISTRATION
AND LOCAL AGENCIES



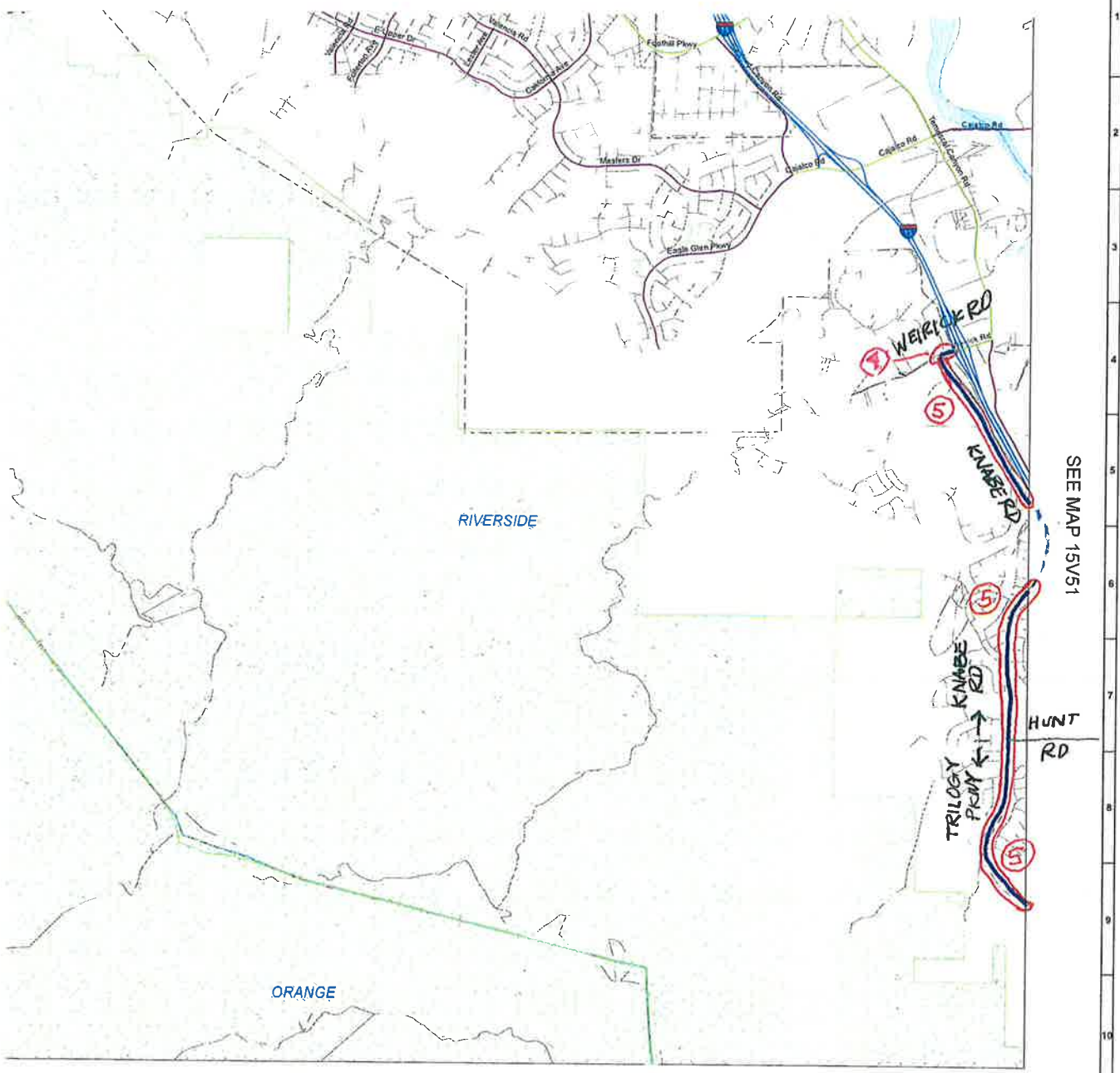
FUNCTIONAL CLASSIFICATION SYSTEM

INTERSTATE	1	
OTHER FWY OR EXPWY	2	
OTHER PRINCIPAL ARTERIAL	3	
MINOR ARTERIAL	4	
MAJOR COLLECTOR	5	
MINOR COLLECTOR	6	
LOCAL	7	



MAP 15W34

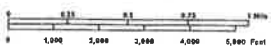
SEE MAP 14V45



SEE MAP 15V/1

3/5/11
 ADMINISTRATION

 NO
 TATOR



STATE OF CALIFORNIA
 DEPARTMENT OF TRANSPORTATION
 IN COOPERATION WITH THE
 FEDERAL HIGHWAY ADMINISTRATION
 AND LOCAL AGENCIES



SEE MAP 14W15

SIGN ROUTES

	INTERSTATE
	U.S.
	STATE
	COUNTY

--- COUNTY BOUNDARY
 - - - CITY BOUNDARY
 - - - - - ASSESSOR

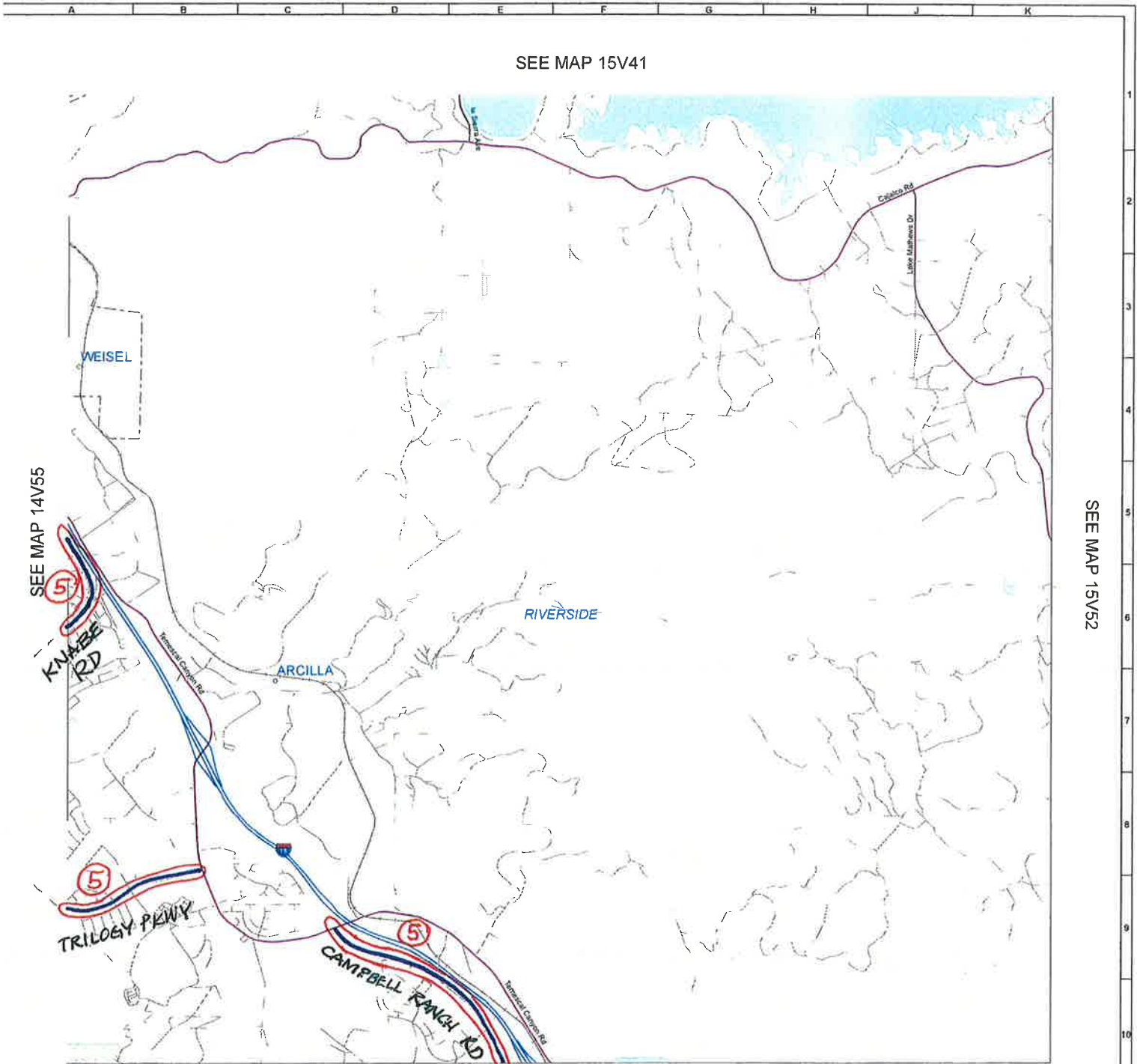
FUNCTIONAL CLASSIFICATION SYSTEM

	INTERSTATE 1
	OTHER FWY OR EXPWY 2
	OTHER PRINCIPAL ARTERIAL 3
	MINOR ARTERIAL 4
	MAJOR COLLECTOR 5
	MINOR COLLECTOR 6
	LOCAL 7



MAP 14V55

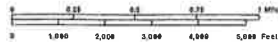
SEE MAP 15V41



SEE MAP 14V55

SEE MAP 15V52

APPROVED Date 8/5/11
 FEDERAL HIGHWAY ADMINISTRATION
Wesley Mitchell
 FOR: VINCENT R. GIANI
 DIVISION ADMINISTRATOR



STATE OF CALIFORNIA
 DEPARTMENT OF TRANSPORTATION
 IN COOPERATION WITH THE
 FEDERAL HIGHWAY ADMINISTRATION
 AND LOCAL AGENCIES



SEE MAP 15W11

--- COUNTY BOUNDARY
 - - - - - CITY BOUNDARY
 - - - - - RAILROAD

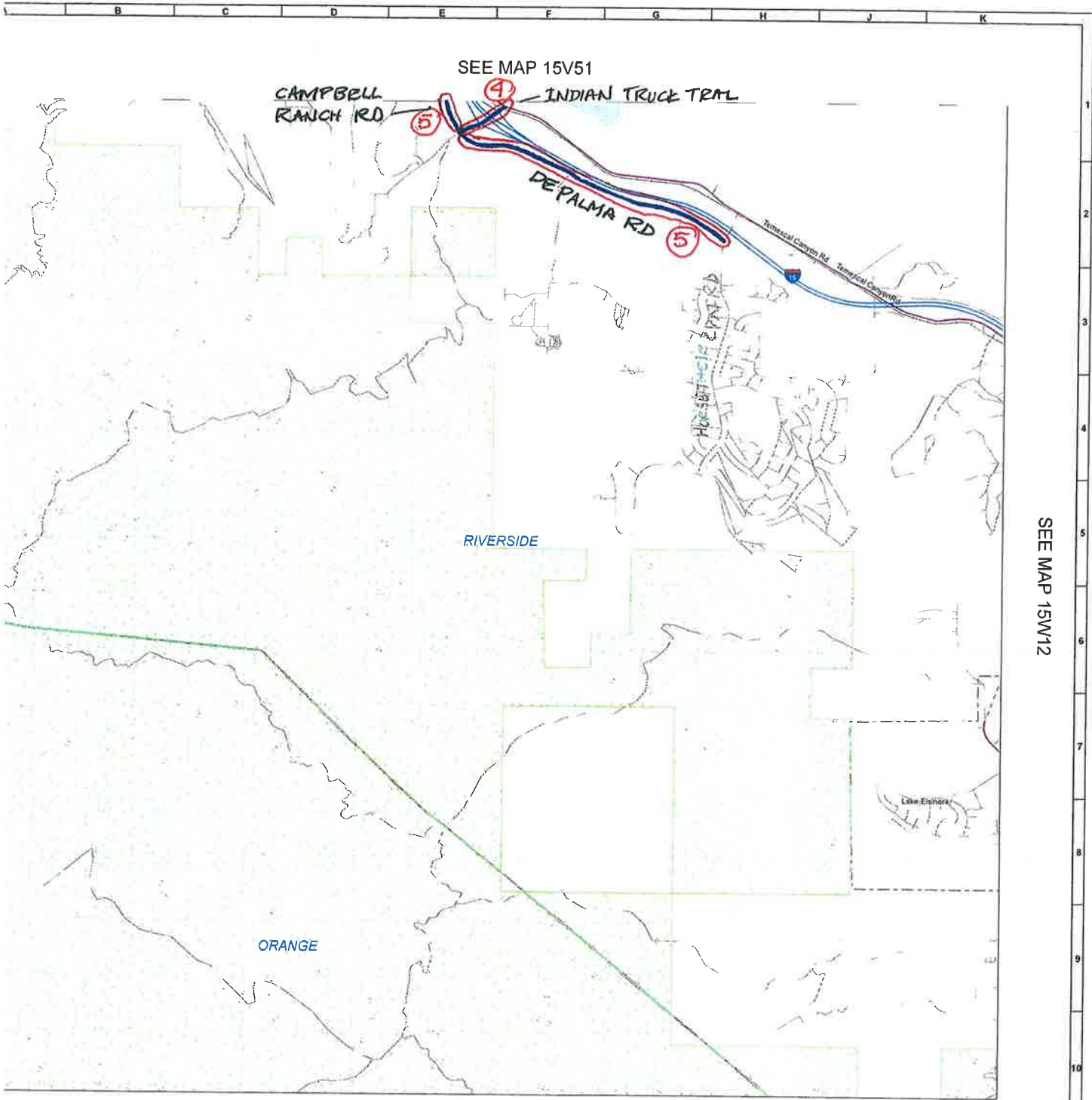
SIGN ROUTES
 INTERSTATE
 U.S.
 STATE
 COUNTY

FUNCTIONAL CLASSIFICATION SYSTEM

INTERSTATE	1
OTHER FWY OR EXPRWY	2
OTHER PRINCIPAL ARTERIAL	3
MAJOR ARTERIAL	4
MAJOR COLLECTOR	5
MINOR COLLECTOR	6
LOCAL	7



MAP 15V51



ate 8/5/11
Y ADMINISTRATION
John P. ...
JAVILIANO
MINISTRATOR



SEE MAP 15W21

STATE OF CALIFORNIA
DEPARTMENT OF TRANSPORTATION
In Cooperation With
FEDERAL HIGHWAY ADMINISTRATION
AND LOCAL AGENCIES



COUNTY BOUNDARY
CITY BOUNDARY
RAILROAD

SIGN ROUTES
 INTERSTATE
 U.S.
 STATE
 COUNTY

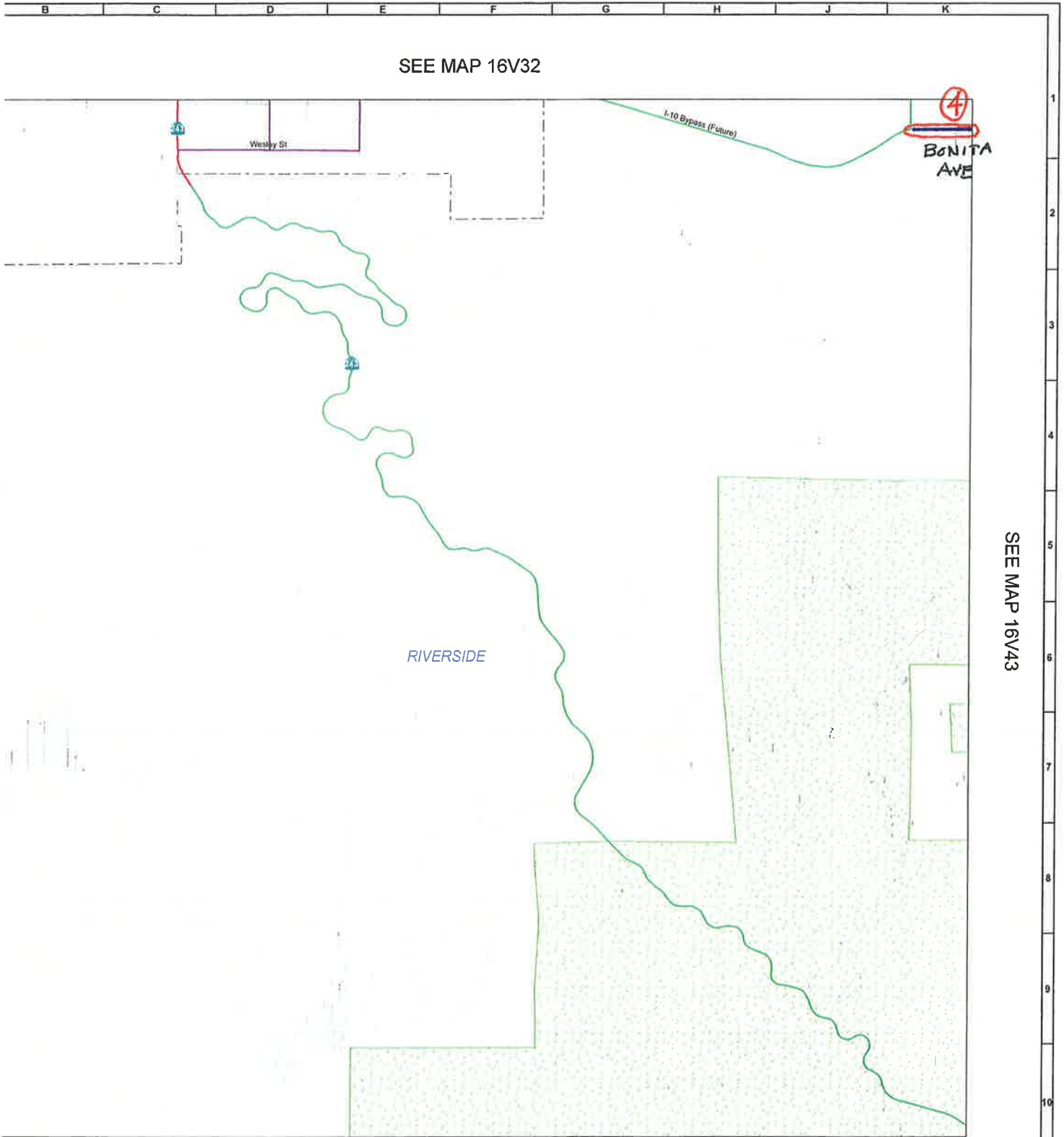
FUNCTIONAL CLASSIFICATION SYSTEM

INTERSTATE	1	
OTHER FHYV OR EXPHYV	2	
OTHER PRINCIPAL ARTERIAL	3	
MINOR ARTERIAL	4	
MAJOR COLLECTOR	5	
MINOR COLLECTOR	6	
LOCAL	7	



MAP 15W11

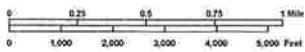
SEE MAP 16V32



SEE MAP 16V43

RIVERSIDE

13
ION



SEE MAP 16V52

--- COUNTY BOUNDARY
 - - - CITY BOUNDARY
 ■■■ KALEBAR

SIGN ROUTES
 INTERSTATE
 U.S.
 STATE

FUNCTIONAL CLASSIFICATION SYSTEM

INTERSTATE	1	—
OTHER FRYT OR EXPRESS	2	—
OTHER PRINCIPAL ARTERIAL	3	—
MINOR ARTERIAL	4	—
MAJOR COLLECTOR	5	—
MINOR COLLECTOR	6	—
LOCAL	7	—

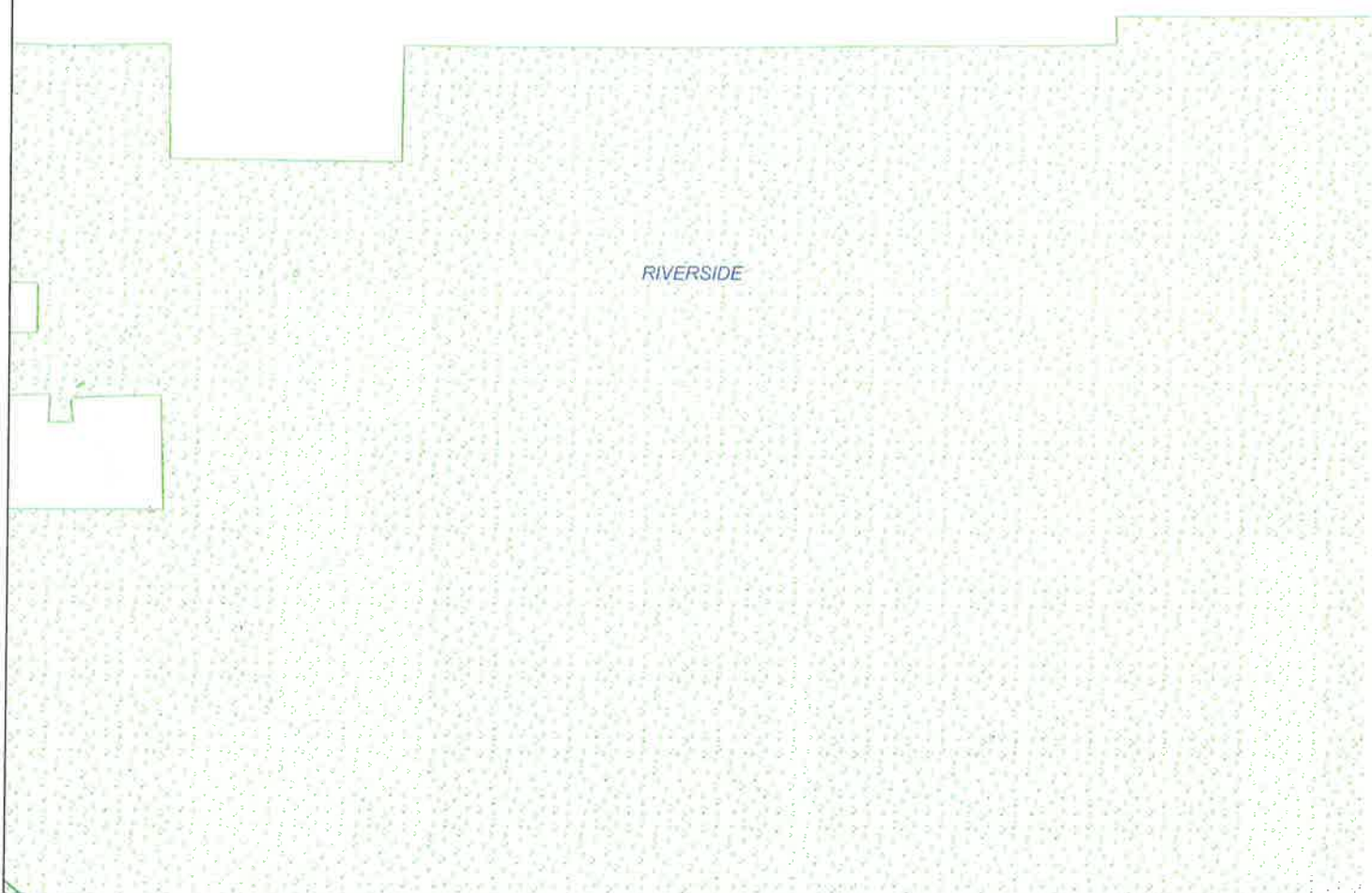
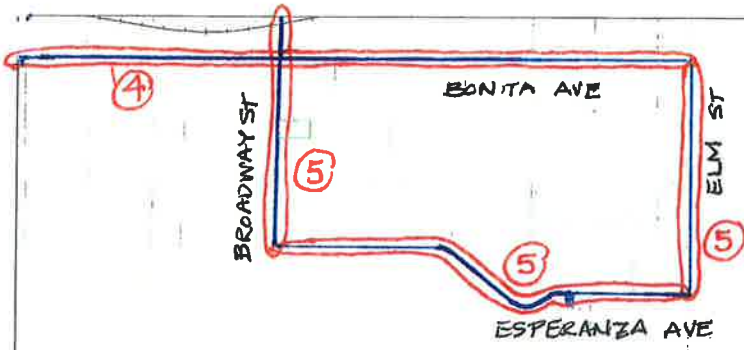


MAP 16V42

STATE OF CALIFORNIA
 DEPARTMENT OF TRANSPORTATION
 In Cooperation With The
 FEDERAL HIGHWAY ADMINISTRATION
 AND LOCAL AGENCIES

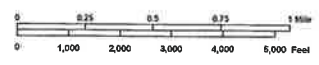


SEE MAP 16V33



SEE MAP 16V44

Date 8/5/11
 HIGHWAY ADMINISTRATION
Ruthel-Kerr
 DISTRICT ADMINISTRATOR



SEE MAP 16V53

STATE OF CALIFORNIA
 DEPARTMENT OF TRANSPORTATION
 In Cooperation With The
 FEDERAL HIGHWAY ADMINISTRATION
 AND LOCAL AGENCIES

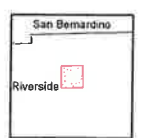


--- COUNTY BOUNDARY
 - - - - - EXISTING BOUNDARY
 --- RAILROAD

SIGN ROUTES
 INTERSTATE
 U.S.
 STATE
 COUNTY

FUNCTIONAL CLASSIFICATION SYSTEM

INTERSTATE	1	
OTHER FRY OR EXPRESS	2	
OTHER PRINCIPAL ARTERIAL	3	
MINOR ARTERIAL	4	
MAJOR COLLECTOR	5	
MINOR COLLECTOR	6	
LOCAL	7	

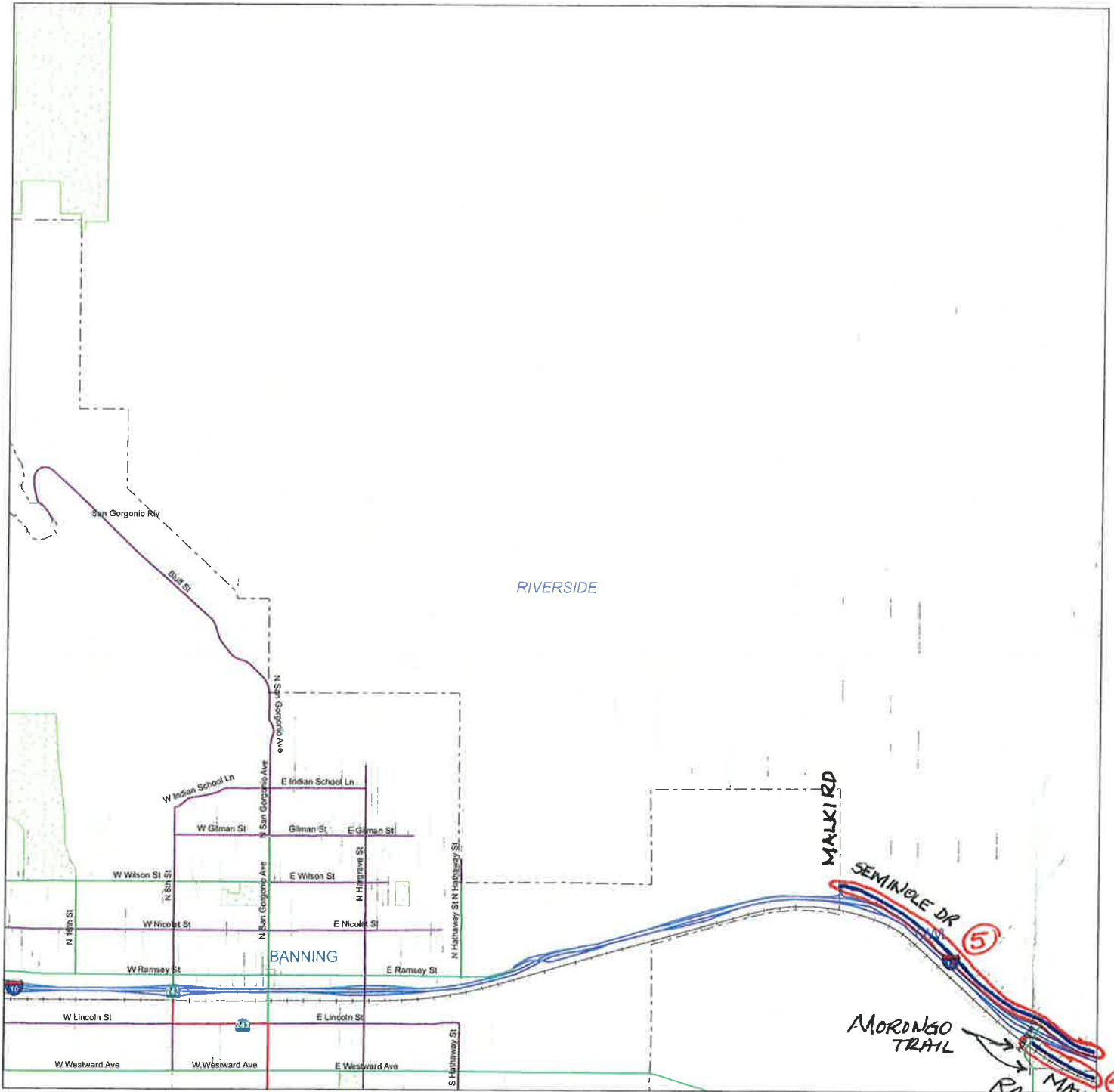


MAP 16V43

SEE MAP 16V

SEE MAP 16V31

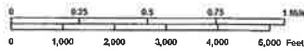
SEE MAP 16V33



SEE MAP 16V42

VED Date: 06/11/2013
CALIFORNIA HIGHWAY ADMINISTRATION

by Paul H. Kane
VINCENT P. MAMMANO
DIVISION ADMINISTRATOR



STATE OF CALIFORNIA
DEPARTMENT OF TRANSPORTATION
In Cooperation With The
FEDERAL HIGHWAY ADMINISTRATION
AND LOCAL AGENCIES



--- COUNTY BOUNDARY
- - - CITY BOUNDARY
RAILROAD

SIGN ROUTES



FUNCTIONAL CLASSIFICATION SYSTEM

INTERSTATE	1
OTHER FWY OR EXPMY	2
OTHER PRINCIPAL ARTERIAL	3
MINOR ARTERIAL	4
MAJOR COLLECTOR	5
MINOR COLLECTOR	6
LOCAL	7

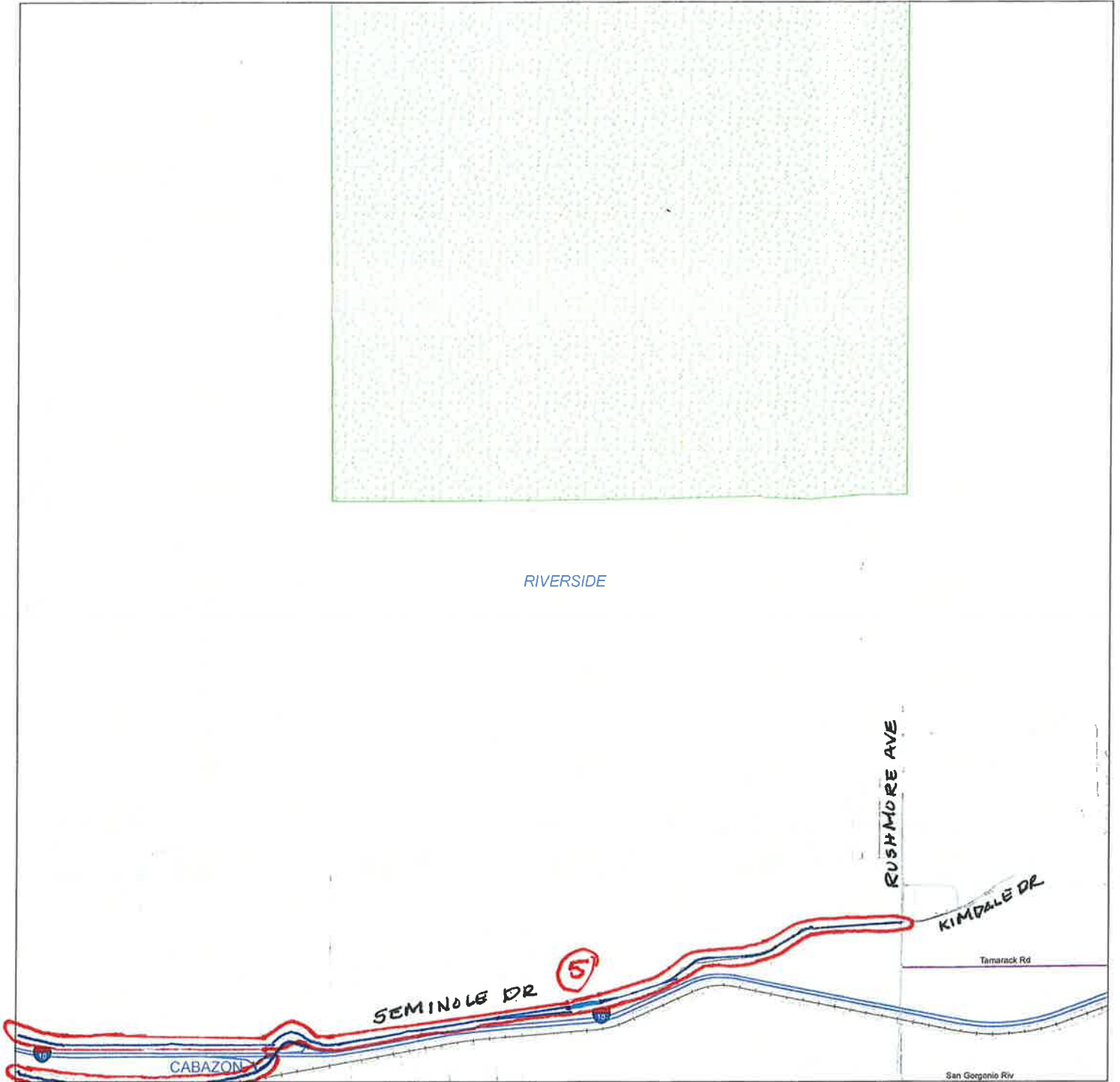


MAP 16V32

SEE MAP 16V

SEE MAP 16V34

RIVERSIDE



④ MAIN ST/
RAILROAD AVE

⑤

Date: 04/23/2013
HIGHWAY ADMINISTRATION

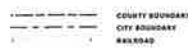
Robert P. Mammone
REGIONAL ADMINISTRATOR



STATE OF CALIFORNIA
DEPARTMENT OF TRANSPORTATION
In Cooperation With The
FEDERAL HIGHWAY ADMINISTRATION
AND LOCAL AGENCIES



SEE MAP 16V43



SIGN ROUTES

	INTERSTATE
	U.S.
	STATE

FUNCTIONAL CLASSIFICATION SYSTEM

	INTERSTATE 1
	OTHER FWY OR EXPWY 2
	OTHER PRINCIPAL ARTERIAL 3
	MINOR ARTERIAL 4
	MAJOR COLLECTOR 5
	MINOR COLLECTOR 6
	LOCAL 7



MAP 16V33

SEE MAP 17V

THOUSAND PALMS

SEE MAP 17V53

15 MOUNTAIN ST

4

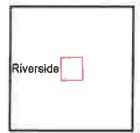
SEE MAP 17W12

FUNCTIONAL CLASSIFICATION SYSTEM

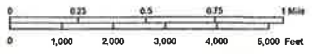
INTERSTATE	1	
OTHER FWY OR EXPWY	2	
OTHER PRINCIPAL ARTERIAL	3	
MAJOR ARTERIAL	4	
MAJOR COLLECTOR	5	
MINOR COLLECTOR	6	
LOCAL	7	

SIGN ROUTES

- INTERSTATE
- U.S.
- STATE
- COUNTY



MAP 17V52

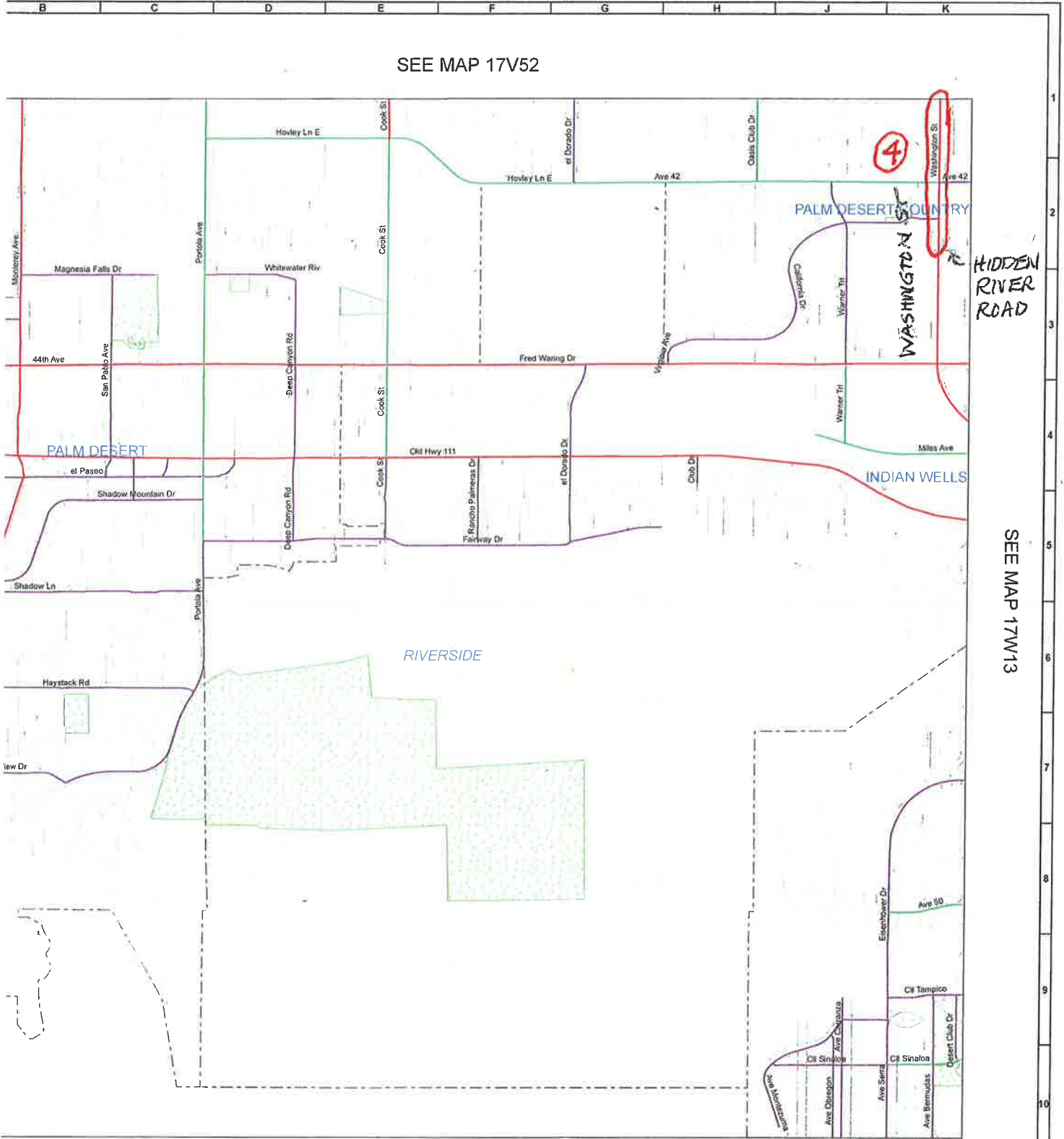


STATE OF CALIFORNIA
DEPARTMENT OF TRANSPORTATION
In Cooperation With The
FEDERAL HIGHWAY ADMINISTRATION
AND LOCAL AGENCIES



- COUNTY BOUNDARY
- CITY BOUNDARY
- RAILROAD

SEE MAP 17V52



SEE MAP 17W13

SEE MAP 17W22

3
IN



STATE OF CALIFORNIA
DEPARTMENT OF TRANSPORTATION
In Cooperation With The
FEDERAL HIGHWAY ADMINISTRATION
AND LOCAL AGENCIES

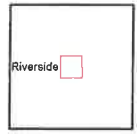


COUNTY BOUNDARY
CITY BOUNDARY
RAILROAD

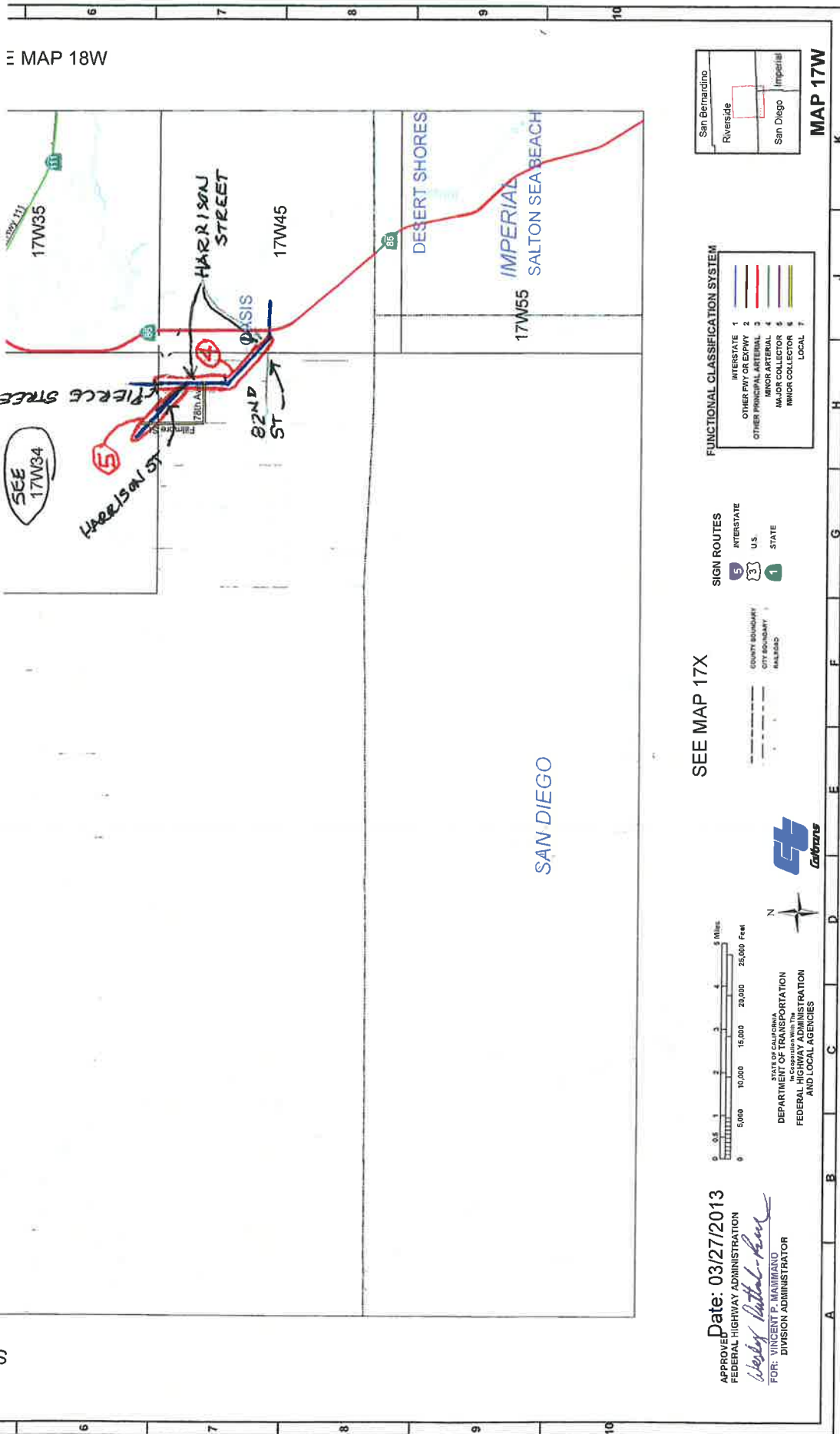
SIGN ROUTES
INTERSTATE
U.S.
STATE

FUNCTIONAL CLASSIFICATION SYSTEM

- INTERSTATE 1
- OTHER FWY OR EXPWY 2
- OTHER PRINCIPAL ARTERIAL 3
- MINOR ARTERIAL 4
- MAJOR COLLECTOR 5
- MINOR COLLECTOR 6
- LOCAL 7



MAP 17W12



SEE MAP 17W24



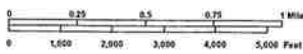
SEE MAP 17W35

Date: 03/27/2013

HIGHWAY ADMINISTRATION

Paul H. Kline

SENY P. MAMMAMO
SION ADMINISTRATOR



STATE OF CALIFORNIA
DEPARTMENT OF TRANSPORTATION
In Cooperation With The
FEDERAL HIGHWAY ADMINISTRATION
AND LOCAL AGENCIES



SEE MAP 17W

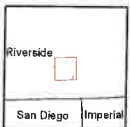
COUNTY BOUNDARY
CITY BOUNDARY
RAILROAD

SIGN ROUTES

INTERSTATE
U.S.
STATE

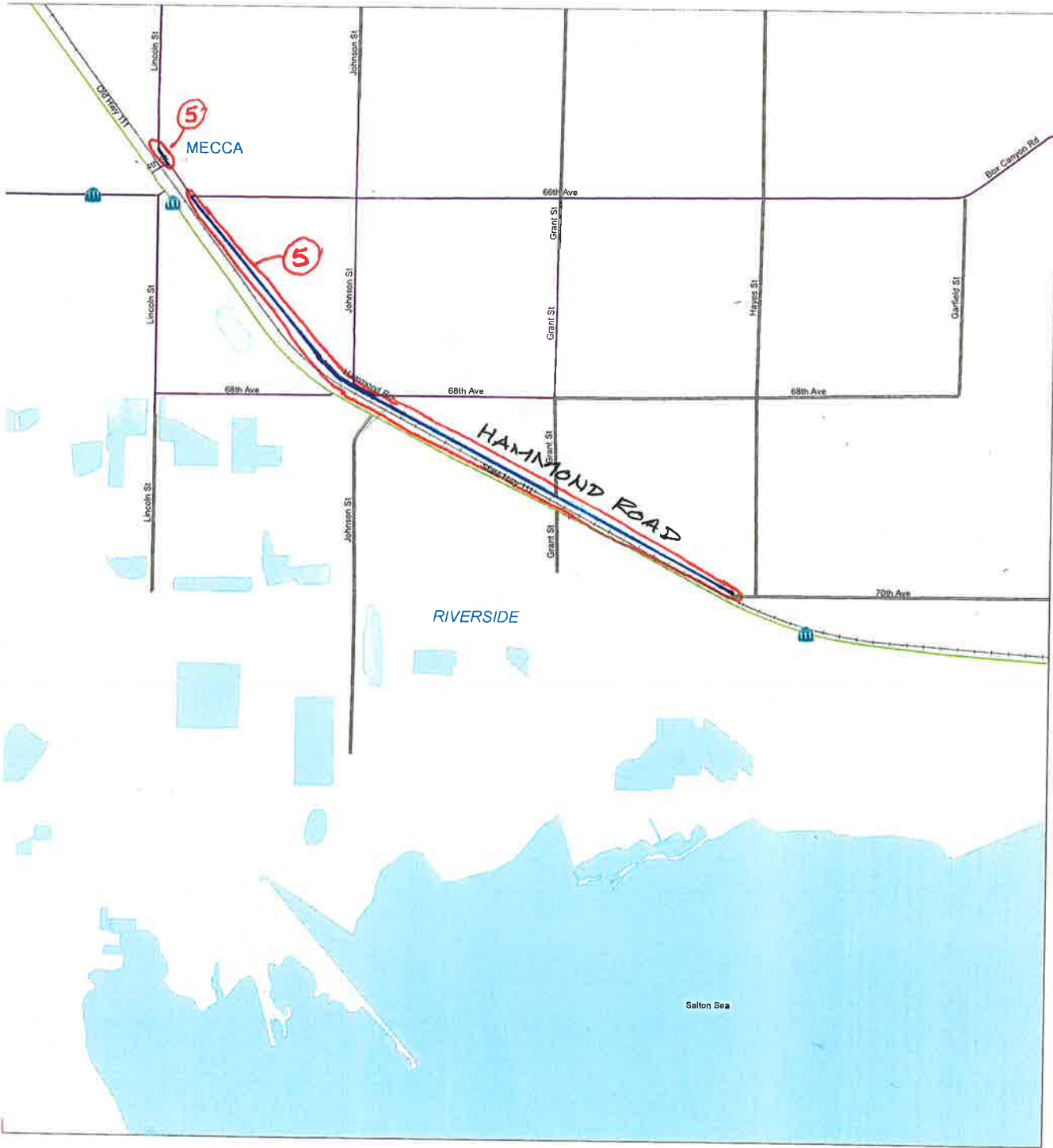
FUNCTIONAL CLASSIFICATION SYSTEM

INTERSTATE	1	
OTHER FWY OR EXPRWY	2	
OTHER PRINCIPAL ARTERIAL	3	
MINOR ARTERIAL	4	
MAJOR COLLECTOR	5	
MINOR COLLECTOR	6	
LOCAL	7	



MAP 17W34

SEE MAP 17W25



SEE MAP 18W31

SEE MAP 17W45



STATE OF CALIFORNIA
 DEPARTMENT OF TRANSPORTATION
 in Cooperation with the
 FEDERAL HIGHWAY ADMINISTRATION
 AND LOCAL AGENCIES



SIGN ROUTES
 INTERSTATE
 U.S.
 STATE

FUNCTIONAL CLASSIFICATION SYSTEM

INTERSTATE	1
OTHER FWY OR EXPWY	2
OTHER PRINCIPAL ARTERIAL	3
MINOR ARTERIAL	4
MAJOR COLLECTOR	5
MINOR COLLECTOR	6
LOCAL	7



MAP 17W35

SEE MAP 20W



SEE MAP 20W25

SEE MAP 20W34



11
TION

STATE OF CALIFORNIA
 DEPARTMENT OF TRANSPORTATION
 In Cooperation With The
 FEDERAL HIGHWAY ADMINISTRATION
 AND LOCAL AGENCIES



--- COUNTY BOUNDARY
 - - - CITY BOUNDARY
 RAILROAD

SIGN ROUTES
 INTERSTATE
 STATE
 COUNTY

FUNCTIONAL CLASSIFICATION SYSTEM

INTERSTATE	1	
OTHER FWH OR EXPRESS	2	
OTHER PRINCIPAL ARTERIAL	3	
MINOR ARTERIAL	4	
MAJOR COLLECTOR	5	
MINOR COLLECTOR	6	
LOCAL	7	



MAP 20W24

ATTACHMENT B

SCAG Concurrence Letter

SOUTHERN CALIFORNIA



**ASSOCIATION of
GOVERNMENTS**

Main Office

818 West Seventh Street
12th Floor
Los Angeles, California
90017-3435

t (213) 236-1800
f (213) 236-1825

www.scag.ca.gov

Officers

President

Carl Morehouse, San Buenaventura

First Vice President

Cheryl Viegas-Walker, El Centro

Second Vice President

Michele Martinez, Santa Ana

Immediate Past President

Greg Pettis, Cathedral City

**Executive/Administration
Committee Chair**

Carl Morehouse, San Buenaventura

Policy Committee Chairs

Community, Economic and
Human Development
Margaret Finlay, Duarte

Energy & Environment
Deborah Robertson, Rialto

Transportation
Alan Wapner, San Bernardino
Associated Governments

August 9, 2014

Maria Aranguiz
Division of Planning
Caltrans–District 8
464 West 4th Street
San Bernardino, CA 92401

RE: FUNCTIONAL CLASSIFICATION CHANGE – COUNTY OF RIVERSIDE

Ms. Aranguiz:

SCAG has received a request from the County of Riverside regarding the Functional Classification Change Request Form to be submitted to Caltrans (attached). Caltrans' Functional Classification Guidelines require that local agencies submit a metropolitan planning organization/regional transportation planning agency (MPO/RTPA) concurrence letter along with the Functional Classification Change Form to the Caltrans District Coordinator.

This letter serves as the concurrence from SCAG on the changes requested by the County.

The SCAG regional travel demand model includes roadway facilities from interstates (1) down to the equivalent of major collectors (5) on the FHWA's functional classification codes. To the extent that these changes affect the SCAG regional highway network, SCAG will update the network to reflect the changes requested by the County upon final approval by Caltrans and the Federal Highway Administration.

If you have any further questions, please contact Ryan Kuo of my staff at 213-236-1813 or kuo@scag.ca.gov.

Sincerely,

Naresh Amatya
Manager, Transportation Planning

NA:rk

Enclosure: Functional Classification Change Request
Cc (email): Susan Vombaur, County of Riverside