

**SUBMITTAL TO THE BOARD OF SUPERVISORS
COUNTY OF RIVERSIDE, STATE OF CALIFORNIA**

920A



FROM: TLMA - Transportation Dept.

SUBMITTAL DATE:
February 11, 2010

SUBJECT: Landscaping and Lighting Maintenance District No. 89-1-Consolidated,
Annexation of Street Lighting Zone 91 (Glen Avon).

RECOMMENDED MOTION: That the Board:

1. Adopt Resolution No. 2010-048, Resolution of the County of Riverside ordering the annexation, and confirming the diagram and assessment of Street Lighting Zone 91 of Landscaping and Lighting Maintenance District No. 89-1-Consolidated, and levying assessments on all assessable lots and parcels of land therein for fiscal year 2010-11.
2. Direct the Auditor-Controller's office to establish an interest-bearing sub-fund 20300 to receive deposits and interest thereon from Street Lighting Zone 91 of Landscaping

Juan C. Perez
Director of Transportation

JAW:jp

FORM APPROVED COUNTY COUNSEL
BY: Dale A. Gardner 1/25/10 DATE
DALE A. GARDNER Departmental Concurrence

FINANCIAL DATA	Current F.Y. Total Cost:	\$0	In Current Year Budget:	N/A
	Current F.Y. Net County Cost:	\$0	Budget Adjustment:	N/A
	Annual Net County Cost:	\$0	For Fiscal Year:	2009-10
SOURCE OF FUNDS: Landscaping and Lighting Maintenance District No. 89-1-Consolidated – 100%				Positions To Be Deleted Per A-30 <input type="checkbox"/>
				Requires 4/5 Vote <input type="checkbox"/>

C.E.O. RECOMMENDATION:

APPROVE:

BY:
Tina Grande

County Executive Office Signature

MINUTES OF THE BOARD OF SUPERVISORS

On motion of Supervisor Stone, seconded by Supervisor Benoit and duly carried, IT WAS ORDERED that the above matter is approved as recommended.

Ayes: Buster, Stone, Benoit and Ashley
Nays: None
Absent: Tavaglione
Date: February 23, 2010
xc: Transp., Auditor

Kecia Harper-Ihem
Clerk of the Board
By:
Deputy

Prev. Agn. Ref. 11/24/09, 3.117 District: 2 Agenda Number:
01/12/10, 9.8

ATTACHMENTS FILED WITH
THE CLERK OF THE BOARD

3.53

The Honorable Board of Supervisors

RE: Landscaping and Lighting Maintenance District No. 89-1-Consolidated, Annexation of Street Lighting Zone 91 (Glen Avon).

February 11, 2010

Page 2 of 2

and Lighting Maintenance District No. 89-1-Consolidated; in accordance with Section 22655-22656 of the Streets and Highways Code.

BACKGROUND: On January 12, 2010, a public hearing was held to receive all testimony regarding the annexation of Street Lighting Zone 91 to Landscaping and Lighting Maintenance District No. 89-1-Consolidated ("L&LMD No. 89-1-C"). After closing the public hearing, the Board directed the Director of Transportation, or his/her designee, to tally the assessment ballots that had been received prior to the close of the hearing. The assessment ballots were to be tabulated on January 13, 2010 at 10:00 a.m. in Conference Room D on the 8th Floor of the County Administrative Center. The tabulation shows that votes representing 2 parcels out of a possible 2 were cast, and that 2 votes (or 100%) were cast in favor of the annexation of Street Lighting Zone 91 to L&LMD No. 89-1-C and the levy and enrollment of the special assessment.

The proposed budget for fiscal year 2010-11 for Street Lighting Zone 91 (within public rights-of-way located northerly of Mission Blvd and easterly and westerly of Amarillo St) is \$2,310 that will result in an assessment for fiscal year 2010-11 within Street Lighting Zone 91 of \$593.82 per acre. Street Lighting Zone 91 includes 2 commercial parcels totaling 3.89 acres. The annual assessment will be adjusted annually by the greater of 2% or the cumulative percentage increase in the CPI-U for "electricity", if any, as it stands as of March of each year over the base index for March of 2009.

Adoption of Resolution No. 2010-048 confirms the assessment levy as indicated in the Engineer's Report for fiscal year 2010-11 for Street Lighting Zone 91 of L&LMD No. 89-1-C and orders the placement of the annual assessment on the County's Assessment Roll for fiscal year 2010-11.

2 RESOLUTION NO. 2010-048

3
4 **RESOLUTION OF THE BOARD OF SUPERVISORS OF THE COUNTY OF RIVERSIDE ORDERING**
5 **THE ANNEXATION OF STREET LIGHTING ZONE 91 TO LANDSCAPING AND LIGHTING**
6 **MAINTENANCE DISTRICT NO. 89-1-CONSOLIDATED OF THE COUNTY OF RIVERSIDE AND**
7 **CONFIRMING THE DIAGRAM AND ASSESSMENT FOR STREET LIGHTING ZONE 91 OF**
8 **LANDSCAPING AND LIGHTING MAINTENANCE DISTRICT NO. 89-1-CONSOLIDATED AND**
9 **LEVYING ASSESSMENTS ON ALL ASSESSABLE LOTS AND PARCELS OF LAND THEREIN**
10 **FOR THE FISCAL YEAR 2010-11**

11 **WHEREAS**, on November 24, 2009 the Board of Supervisors (hereinafter the "Board of
12 Supervisors") of the County of Riverside (hereinafter the "County") adopted Resolution No. 2009-305,
13 pursuant to Section 22608 and Section 22585 et seq. of the Streets and Highways Code, declaring the
14 intention of the Board of Supervisors to order the annexation of Street Lighting Zone 91 to
15 Landscaping and Lighting Maintenance District No. 89-1-Consolidated (hereinafter "L&LMD No.
16 89-1-C") of the County pursuant to the Landscaping and Lighting Act of 1972, being Part 2
17 (commencing with Section 22500) of Division 15 of the Streets and Highways Code, and giving notice
18 of and setting a public hearing for 9:30 a.m. on January 12, 2010 at the meeting room of the Board of
19 Supervisors and requiring that the notice of the public hearing and assessment ballots be mailed to all
20 owners of property within Street Lighting Zone 91 as shown on the equalized tax roll; and

21 **WHEREAS**, notice of said public hearing was duly published and mailed as required by
22 Resolution No. 2009-305, Section 22626 of the Streets and Highways Code and Sections 53753 and
23 54954.6 of the Government Code and the assessment ballots were timely mailed to all owners of
property within said Street Lighting Zone 91 as shown on the equalized tax roll; and

24 **WHEREAS**, at 9:30 a.m. on January 12, 2010, as set forth in Resolution No. 2009-305, the
25 Board of Supervisors held a public hearing and afforded all interested persons an opportunity to be
26 heard, and considered all oral statements and all written protest or communications made or filed by
27 any interested persons, closed the public hearing and directed the Director of Transportation, or his
28 designee, as an impartial person having no vested interest in the annexation of Street Lighting

FORM APPROVED COUNTY COUNSEL
BY: *DALE A. GARDNER* 1/25/10
DALE A. GARDNER 4

1 Zone 91 to L&LMD No. 89-1-C as required by Section 53753(e) of the Government Code to tally the
2 assessment ballots that had been received prior to the close of the public hearing; and

3 **WHEREAS**, the tally of the assessment ballots show that assessment ballots were timely
4 received from the owner of 2 parcels out of a possible 2 parcels and that 2 parcels (100 percent of the
5 assessment ballots received) voted in favor of annexation of Street Lighting Zone 91 to L&LMD No.
6 89-1-C and the levy of an annual assessment in said Street Lighting Zone 91 beginning fiscal year
7 2010-11; and

8 **WHEREAS**, the Board of Supervisors may proceed, pursuant to Section 22631 of the Streets
9 and Highways Code, to adopt a resolution confirming the diagram and assessment, either as originally
10 proposed, or as changed by the Board of Supervisors, and the adoption of such a resolution shall
11 constitute the levy of an assessment on all assessable lots and parcels of land within Street Lighting
12 Zone 91 of L&LMD No. 89-1-C beginning fiscal year 2010-11.

13 **NOW, THEREFOR, BE IT RESOLVED, FOUND, DETERMINED AND ORDERED** by the
14 Board of Supervisors of the County in regular session on February 23, 2010 as follows:

15 **Section 1. Findings.** The Board of Supervisors finds:

- 16 (a) the proceeding recitals are correct;
- 17 (b) compliance has been had with all the requirements of the Landscaping and
18 Lighting Act of 1972, being Part 2 (commencing with Section 22500) of Division
19 15 of the Streets and Highways Code, and Sections 53753 and 54954.6 of the
20 Government Code;
- 21 (c) a majority protest to the annexation of and annual assessment of Street Lighting
22 Zone 91 of L&LMD No. 89-1-C has not been filed;
- 23 (d) the tally of the assessment ballots timely received was 100 percent voted in
24 favor of the annexation of Street Lighting Zone 91 to L&LMD No. 89-1-C and the
25 levy of an annual assessment beginning fiscal year 2010-11, and 0 percent
26 voted no;

- 1 (e) the Board of Supervisors may proceed to adopt a resolution ordering the
2 annexation of Street Lighting Zone 91 to L&LMD No. 89-1-C;
- 3 (f) the Board of Supervisors may proceed to adopt a resolution confirming the
4 diagram and assessment for Street Lighting Zone 91 of L&LMD No. 89-1-C
5 either as originally proposed or as changed by it; and
- 6 (g) the assessments to be levied on the assessable lots and parcels of land within
7 Street Lighting Zone 91 of L&LMD No. 89-1-C for the the provision of electricity
8 for streetlights in said Street Lighting Zone 91 during the fiscal year 2010-11 as
9 contained in the report of the Director of Transportation which is on file with the
10 Clerk of the Board of Supervisors (hereinafter the "Report") are based on
11 benefits derived by such lots and parcels from the availability of such streetlights
12 improvements, and are not based upon the ownership of such lots and parcels.

13 **Section 2. Annexation.** Street Lighting Zone 91, as proposed to be annexed to
14 L&LMD No. 89-1-C, includes all the property subject to Parcel Map No. 34696 and Plot Plan No.
15 22456 in the County of Riverside, State of California as described in Exhibit "A" attached hereto, shall
16 be and is annexed into L&LMD No. 89-1-C.

17 **Section 3. Improvements.** The improvements authorized for Street Lighting
18 Zone 91 of L&LMD No. 89-1-C are:

- 19 (a) Providing electricity to all streetlights within the public right-of-way including
20 incidental costs and expenses.

21 **Section 4. Confirmation of Report.** The Report and the assessment diagram and
22 the assessment of estimated costs for the the provision of electricity for streetlights in Street Lighting
23 Zone 91 of L&LMD No. 89-1-C for fiscal year 2010-11 as contained in the Report are confirmed.

24 **Section 5. Levy of Assessment.** Pursuant to Section 22631 of the Streets and
25 Highways Code the adoption of this resolution constitutes the levy of the assessment for the the
26 provision of electricity for streetlights in Street Lighting Zone 91 of L&LMD No. 89-1-C during fiscal

1 year 2010-11, as contained in the Report, and such assessment is levied. The Clerk of the Board of
2 Supervisors is directed to file a certified copy of this resolution, together with the diagram and
3 assessment contained in the Report with the County Auditor-Controller of the County of Riverside,
4 who, pursuant to Section 22645 of the Streets and Highways Code, shall enter on the County Tax Roll
5 opposite each lot or parcel of land the amount assessed thereupon, as shown in said assessment.

6 **Section 6. Effective Date.** This Resolution shall take effect from and after its date
7 of adoption.

8 ROLL CALL:

9 Ayes: Buster, Stone, Benoit, and Ashley
10 Nays: None
11 Absent: Tavaglione

12 The foregoing is certified to be a true copy of a resolution duly
13 adopted by said Board of Supervisors on the date therein set forth.

14 KECIA HARPER-IHEM, Clerk of said Board

15 By: _____
16 Deputy

EXHIBIT "A"

DESCRIPTION OF BOUNDARIES

The boundaries of Street Lighting Zone 91 to be annexed into Landscaping and Lighting Maintenance District No. 89-1-Consolidated, of the County of Riverside are coterminous with the boundaries of APN 169-100-048, and 053 as shown on Assessment Roll in the County of Riverside, State of California in Fiscal Year 2010-11.

1
2
3
4
5
6
7
8
9
10
11
12
13
14
15
16
17
18
19
20
21
22
23
24

STREET LIGHTING ZONE 91

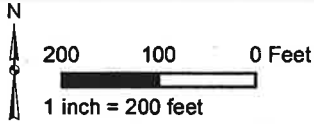
PORTION OF SECTION 11, T.2., R.6W.

PARCEL MAP NO. 34696 & PLOT PLAN NO. 22456
2 PARCELS

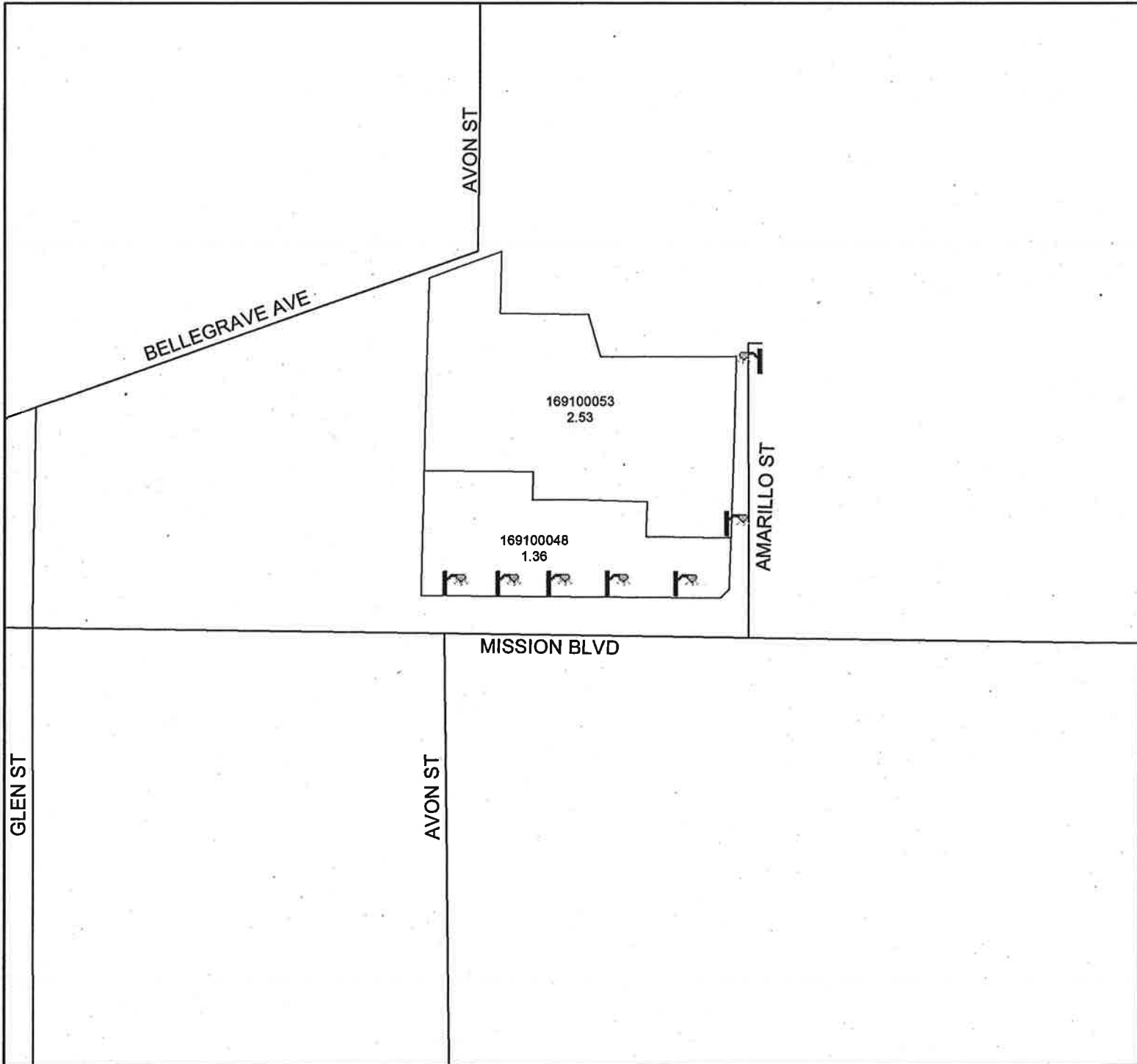


The County of Riverside assumes no warranty or legal responsibility for the information contained on this map. Data and information represented on this map is subject to update, modification and may not be complete or appropriate for all purposes. County GIS and other sources should be queried for the most current information. Do not copy or reuse this map.

Printed by jpickeri on 11/19/09



ASSESSMENT DIAGRAM



 DENOTES MAINTAINED STREETLIGHT