

**SUBMITTAL TO THE BOARD OF SUPERVISORS
COUNTY OF RIVERSIDE, STATE OF CALIFORNIA**

658A



FROM: TLMA - Transportation Dept.

SUBMITTAL DATE:
April 22, 2010

SUBJECT: Landscaping and Lighting Maintenance District No. 89-1-Consolidated,
Annexation of Zone 147 (Eastvale).

RECOMMENDED MOTION: That the Board:

1. Adopt Resolution No. 2010-110, Resolution of the County of Riverside ordering the annexation, and confirming the diagram and assessment of Zone 147 of Landscaping and Lighting Maintenance District No. 89-1-Consolidated, and levying assessments on all assessable lots and parcels of land therein for fiscal year 2010-11.
2. Direct the Auditor-Controller's office to establish an interest-bearing sub-fund 20300 to receive deposits and interest thereon from Zone 147 of Landscaping and Lighting

Juan C. Perez
Director of Transportation

FORM APPROVED COUNTY COUNSEL
BY: Dale A. Gardner 4/17/10
DATE: 4/17/10
DALE A. GARDNER
Departmental Concurrence

FINANCIAL DATA	Current F.Y. Total Cost:	\$0	In Current Year Budget:	N/A
	Current F.Y. Net County Cost:	\$0	Budget Adjustment:	N/A
	Annual Net County Cost:	\$0	For Fiscal Year:	2009-10
SOURCE OF FUNDS: Landscaping and Lighting Maintenance District No. 89-1-Consolidated – 100%				Positions To Be Deleted Per A-30 <input type="checkbox"/>
				Requires 4/5 Vote <input type="checkbox"/>

C.E.O. RECOMMENDATION:

APPROVE

BY:
Tina Grande

County Executive Office Signature

MINUTES OF THE BOARD OF SUPERVISORS

On motion of Supervisor Benoit, seconded by Supervisor Tavaglione and duly carried by unanimous vote, IT WAS ORDERED that the above matter is approved as recommended.

Ayes: Buster, Tavaglione, Stone, Benoit and Ashley
Nays: None
Absent: None
Date: May 4, 2010
xc: Transp., Auditor

Kecia Harper-Ihem
Clerk of the Board
By:
Deputy

Policy Policy
Dep't Recomm.: Per Exec. Ofc.:
Consent Consent

Prev. Agn. Ref. 01/26/10, 3.50
03/16/10, 9.9 | **District:** 2 | **Agenda Number:**

3.79

ATTACHMENTS FILED WITH
THE CLERK OF THE BOARD

The Honorable Board of Supervisors

RE: Landscaping and Lighting Maintenance District No. 89-1-Consolidated, Annexation of Zone 147 (Eastvale).

April 22, 2010

Page 2 of 2

Maintenance District No. 89-1-Consolidated; in accordance with Section 22655-22656 of the Streets and Highways Code.

BACKGROUND: On March 16, 2010, a public hearing was held to receive all testimony regarding the annexation of Zone 147 to Landscaping and Lighting Maintenance District No. 89-1-Consolidated (L&LMD No. 89-1-C"). After closing the public hearing, the Board directed the Director of Transportation, or his/her designee, to tally the assessment ballots that had been received prior to the close of the hearing. The assessment ballots were to be tabulated on March 17, 2010 at 10:00 a.m. in Conference Room D on the 8th Floor of the County Administrative Center. The tabulation shows that votes representing 174 parcels out of a possible 174 were cast, and that 174 votes (or 100%) were cast in favor of the annexation of Zone 147 to L&LMD No. 89-1-C and the levy and enrollment of the special assessment.

The proposed budget for fiscal year 2010-11 for Zone 147 is \$1,155 that will result in an assessment for fiscal year 2010-11 within Zone 147 of \$6.64 per parcel. Zone 147 includes 174 single-family residential lots. The annual assessment will be adjusted annually by the greater of 2% or the cumulative percentage increase in the CPI-U for "electricity", if any, as it stands as of March of each year over the base index for March of 2010.

Adoption of Resolution No. 2010-110 confirms the assessment levy as indicated in the Engineer's Report for fiscal year 2010-11 for Zone 147 of L&LMD No. 89-1-C and orders the placement of the annual assessment on the County's Assessment Roll for fiscal year 2010-11.

2 RESOLUTION NO. 2010-110

3
4 RESOLUTION OF THE BOARD OF SUPERVISORS OF THE COUNTY OF RIVERSIDE ORDERING
5 THE ANNEXATION OF ZONE 147 TO LANDSCAPING AND LIGHTING MAINTENANCE DISTRICT
6 NO. 89-1-CONSOLIDATED OF THE COUNTY OF RIVERSIDE AND CONFIRMING THE DIAGRAM
7 AND ASSESSMENT FOR ZONE 147 OF LANDSCAPING AND LIGHTING MAINTENANCE
8 DISTRICT NO. 89-1-CONSOLIDATED AND LEVYING ASSESSMENTS ON ALL ASSESSABLE
9 LOTS AND PARCELS OF LAND THEREIN FOR THE FISCAL YEAR 2010-11

10
11 WHEREAS, on January 26, 2010 the Board of Supervisors (hereinafter the "Board of
12 Supervisors") of the County of Riverside (hereinafter the "County") adopted Resolution No. 2010-020,
13 pursuant to Section 22608 and Section 22585 et seq. of the Streets and Highways Code, declaring the
14 intention of the Board of Supervisors to order the annexation of Zone 147 to Landscaping and Lighting
15 Maintenance District No. 89-1-Consolidated (hereinafter "L&LMD No. 89-1-C") of the County pursuant
16 to the Landscaping and Lighting Act of 1972, being Part 2 (commencing with Section 22500) of
17 Division 15 of the Streets and Highways Code, and giving notice of and setting a public hearing for
18 9:30 a.m. on March 16, 2010 at the meeting room of the Board of Supervisors and requiring that the
19 notice of the public hearing and assessment ballots be mailed to all owners of property within
20 Zone 147 as shown on the equalized tax roll; and

21
22 WHEREAS, notice of said public hearing was duly published and mailed as required by
23 Resolution No. 2010-020, Section 22626 of the Streets and Highways Code and Sections 53753 and
24 54954.6 of the Government Code and the assessment ballots were timely mailed to all owners of
25 property within said Zone 147 as shown on the equalized tax roll; and

26
27 WHEREAS, at 9:30 a.m. on March 16, 2010, as set forth in Resolution No. 2010-020, the
28 Board of Supervisors held a public hearing and afforded all interested persons an opportunity to be
29 heard, and considered all oral statements and all written protest or communications made or filed by
30 any interested persons, closed the public hearing and directed the Director of Transportation, or his
31 designee, as an impartial person having no vested interest in the annexation of Zone 147 to L&LMD

APPROVED COUNTY COUNSEL
L. Gardner
4/17/10
L. GARDNER
DATE

1 No. 89-1-C as required by Section 53753(e) of the Government Code to tally the assessment ballots
2 that had been received prior to the close of the public hearing; and

3 **WHEREAS**, the tally of the assessment ballots show that assessment ballots were timely
4 received from the owner of 174 parcels out of a possible 174 parcels and that 174 parcels (100
5 percent of the assessment ballots received) voted in favor of annexation of Zone 147 to L&LMD No.
6 89-1-C and the levy of an annual assessment in said Zone 147 beginning fiscal year 2010-11; and

7 **WHEREAS**, the Board of Supervisors may proceed, pursuant to Section 22631 of the Streets
8 and Highways Code, to adopt a resolution confirming the diagram and assessment, either as originally
9 proposed, or as changed by the Board of Supervisors, and the adoption of such a resolution shall
10 constitute the levy of an assessment on all assessable lots and parcels of land within Zone 147 of
11 L&LMD No. 89-1-C beginning fiscal year 2010-11.

12 **NOW, THEREFOR, BE IT RESOLVED, FOUND, DETERMINED AND ORDERED** by the
13 Board of Supervisors of the County in regular session on April 20, 2010 as follows:

14 **Section 1. Findings.** The Board of Supervisors finds:

- 15 (a) the proceeding recitals are correct;
- 16 (b) compliance has been had with all the requirements of the Landscaping and
17 Lighting Act of 1972, being Part 2 (commencing with Section 22500) of Division
18 15 of the Streets and Highways Code, and Sections 53753 and 54954.6 of the
19 Government Code;
- 20 (c) a majority protest to the annexation of and annual assessment of Zone 147 of
21 L&LMD No. 89-1-C has not been filed;
- 22 (d) the tally of the assessment ballots timely received was 100 percent voted in
23 favor of the annexation of Zone 147 to L&LMD No. 89-1-C and the levy of an
24 annual assessment beginning fiscal year 2010-11, and 0 percent voted no;
- 25 (e) the Board of Supervisors may proceed to adopt a resolution ordering the
26 annexation of Zone 147 to L&LMD No. 89-1-C;

1 (f) the Board of Supervisors may proceed to adopt a resolution confirming the
2 diagram and assessment for Zone 147 of L&LMD No. 89-1-C either as originally
3 proposed or as changed by it; and

4 (g) the assessments to be levied on the assessable lots and parcels of land within
5 Zone 147 of L&LMD No. 89-1-C for the maintenance and servicing of, and the
6 provision of electricity for, traffic signal improvements in said Zone 147 during
7 the fiscal year 2010-11 as contained in the report of the Director of
8 Transportation which is on file with the Clerk of the Board of Supervisors
9 (hereinafter the "Report") are based on benefits derived by such lots and parcels
10 from the availability of such traffic signal improvements, and are not based upon
11 the ownership of such lots and parcels.

12 **Section 2. Annexation.** Zone 147, as proposed to be annexed to L&LMD No.
13 89-1-C, includes all the property subject to Tract Map No. 32491 in the County of Riverside, State of
14 California as described in Exhibit "A" attached hereto, shall be and is annexed into L&LMD No. 89-1-C.

15 **Section 3. Improvements.** The improvements authorized for Zone 147 of L&LMD
16 No. 89-1-C are:

17 (a) Providing electricity to and the maintenance and servicing of traffic signals within
18 the public right-of-way including incidental costs and expenses; and

19 (b) Providing electricity to all streetlights within the public right-of-way including
20 incidental costs and expenses.

21 **Section 4. Confirmation of Report.** The Report and the assessment diagram and
22 the assessment of estimated costs for the maintenance and servicing of, and the provision of
23 electricity for, traffic signal improvements in Zone 147 of L&LMD No. 89-1-C for fiscal year 2010-11 as
24 contained in the Report are confirmed.

25 **Section 5. Levy of Assessment.** Pursuant to Section 22631 of the Streets and
26 Highways Code the adoption of this resolution constitutes the levy of the assessment for the

1 maintenance and servicing of, and the provision of electricity for, traffic signal improvements in
2 Zone 147 of L&LMD No. 89-1-C during fiscal year 2010-11, as contained in the Report, and such
3 assessment is levied. The Clerk of the Board of Supervisors is directed to file a certified copy of this
4 resolution, together with the diagram and assessment contained in the Report with the County Auditor-
5 Controller of the County of Riverside, who, pursuant to Section 22645 of the Streets and Highways
6 Code, shall enter on the County Tax Roll opposite each lot or parcel of land the amount assessed
7 thereupon, as shown in said assessment.

8 **Section 6. Effective Date.** This Resolution shall take effect from and after its date
9 of adoption.

10 ROLL CALL:

11 Ayes: Buster, Tavaglione, Stone, Benoit, and Ashley
12 Nays: None
13 Absent: None

14 The foregoing is certified to be a true copy of a resolution duly
15 adopted by said Board of Supervisors on the date therein set forth.

16 KECIA HARPER-IHEM, Clerk of said Board

17 By: _____
18 Deputy

EXHIBIT "A"
DESCRIPTION OF BOUNDARIES

The boundaries of Zone 147 to be annexed into Landscaping and Lighting Maintenance District No. 89-1-Consolidated, of the County of Riverside are coterminous with the boundaries of 174 parcel(s) as shown on Tract Map No. 32491 in the County of Riverside, State of California for fiscal year 2010-11.

1
2
3
4
5
6
7
8
9
10
11
12
13
14
15
16
17
18
19
20
21
22
23
24

ZONE 147

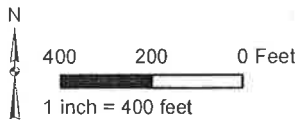
PORTION OF SECTIONS 27 & 34, T.2S., R.7W.

TRACT MAP NO. 32491

174 PARCELS

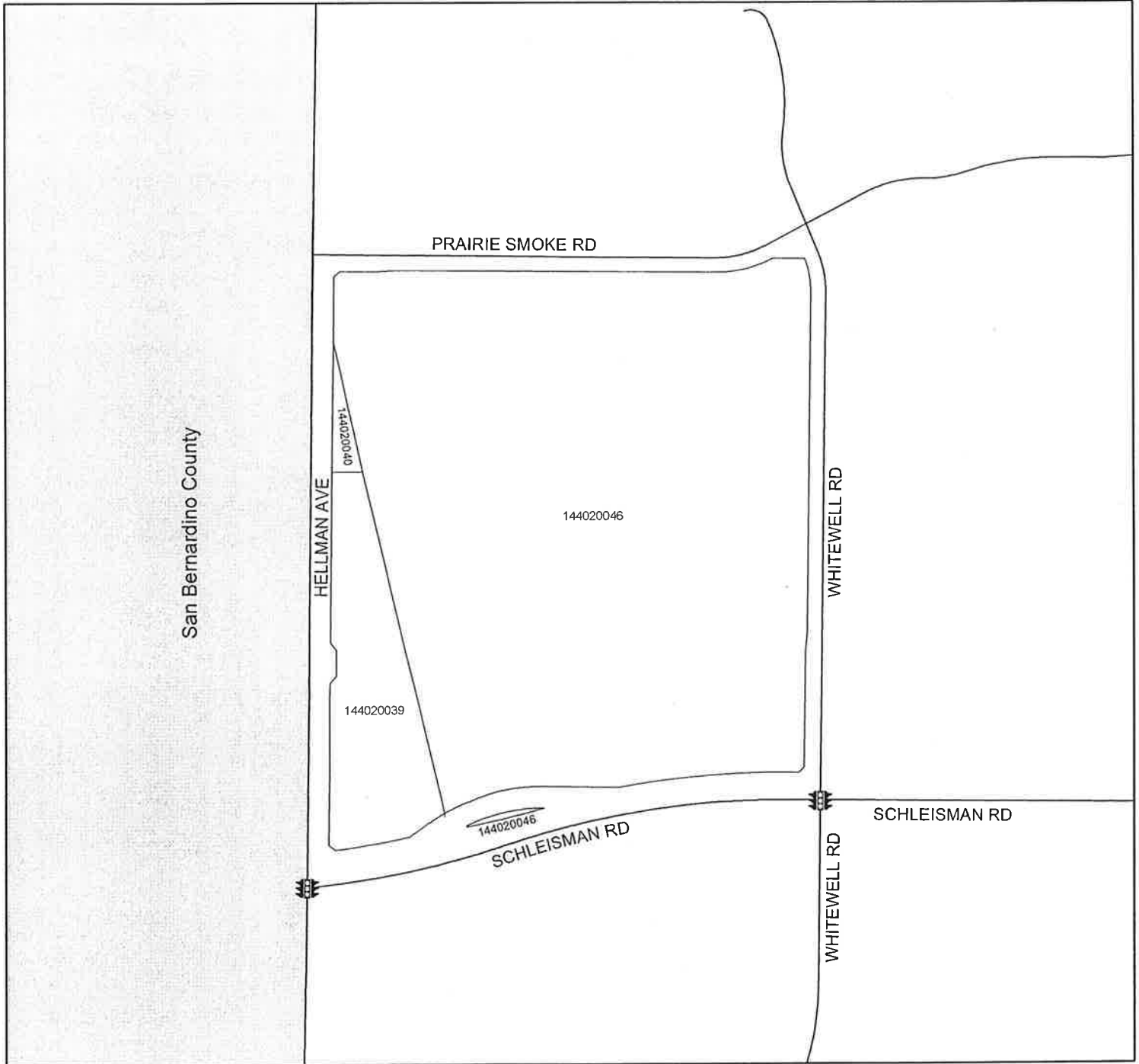


The County of Riverside assumes no warranty or legal responsibility for the information contained on this map. Data and information represented on this map is subject to updates, modifications and may not be complete or appropriate for all purposes. County GIS and other sources should be queried for the most current information. Do not copy or reuse this map.



ASSESSMENT DIAGRAM

Printed by jpickeri on 12/17/09



DENOTES MAINTAINED TRAFFIC SIGNAL