

**SUBMITTAL TO THE BOARD OF SUPERVISORS  
COUNTY OF RIVERSIDE, STATE OF CALIFORNIA**

654 A



**FROM:** TLMA - Transportation Dept.

**SUBMITTAL DATE:**  
April 22, 2010

**SUBJECT:** Landscaping and Lighting Maintenance District No. 89-1-Consolidated,  
Annexation of Zone 150 (French Valley).

**RECOMMENDED MOTION:** That the Board:

With regard to the annexation of Zone 150 to Landscaping and Lighting Maintenance District No. 89-1-Consolidated, conduct the public hearing and, after closing the public hearing, direct the Director of Transportation, or his designee, who the Board finds to be an impartial person as that term is used in Section 53753(e) of the Government Code, to tally all ballots received prior to the close of public hearing. All ballots received prior to the close of the public hearing will be tallied at 10:00 a.m. on Wednesday, May 5, 2010 in Conference Room D on the 8<sup>th</sup> Floor of the County Administrative Center, 4080 Lemon Street, Riverside, California. Staff is directed to

Juan C. Perez  
Director of Transportation

MH:jp

<b>FINANCIAL DATA</b>	Current F.Y. Total Cost:	\$0	In Current Year Budget:	N/A
	Current F.Y. Net County Cost:	\$0	Budget Adjustment:	N/A
	Annual Net County Cost:	\$0	For Fiscal Year:	2009-10
<b>SOURCE OF FUNDS:</b> Landscaping and Lighting Maintenance District No. 89-1-Consolidated – 100%				Positions To Be Deleted Per A-30 <input type="checkbox"/>
				Requires 4/5 Vote <input type="checkbox"/>

**C.E.O. RECOMMENDATION:**

APPROVE

BY:   
Tina Grande

**County Executive Office Signature**

**MINUTES OF THE BOARD OF SUPERVISORS**

On motion of Supervisor Stone, seconded by Supervisor Benoit and duly carried by unanimous vote, IT WAS ORDERED that the above matter is approved as recommended.

Ayes: Buster, Tavaglione, Stone, Benoit and Ashley

Nays: None

Absent: None

Date: May 4, 2010

xc: Transp.

Kecia Harper-Ihem

Clerk of the Board

By:   
Deputy

Prev. Agn. Ref. 03/16/10, 3.59

District: 3

Agenda Number:

ATTACHMENTS FILED  
WITH THE CLERK OF THE BOARD

9.2

FORM APPROVED COUNTY COUNSEL  
BY: Dale A. Gardner  
DATE: 4/17/10

Departmental Concurrence

Policy  Policy   
Dept's Recomm.:  Consent  
Per Exec. Ofc.:  Consent

The Honorable Board of Supervisors

RE: Landscaping and Lighting Maintenance District No. 89-1-Consolidated, Annexation of Zone 150 (French Valley).

April 22, 2010

Page 2 of 2

cause the appropriate resolution, based on the election tally, to be prepared and returned to the Board for its consideration.

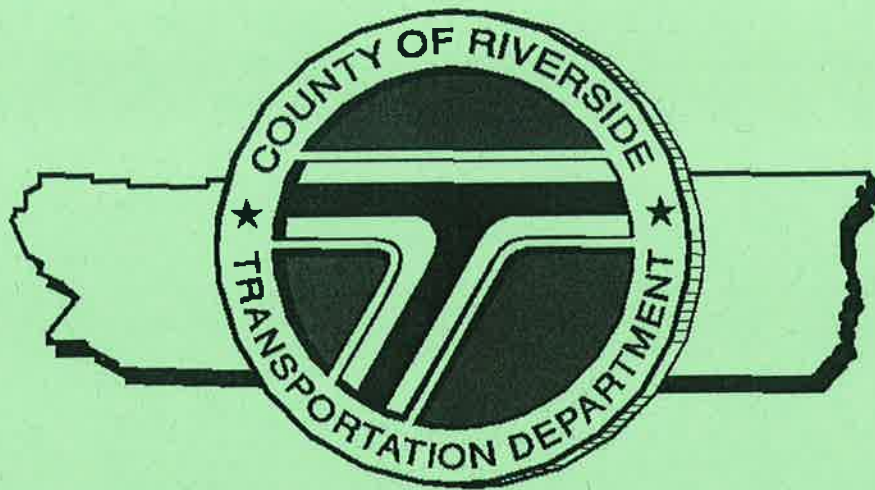
**BACKGROUND:** Pursuant to the Landscaping and Lighting Act of 1972 and Resolution 2010-075 adopted March 16, 2010, the Board of Supervisors noticed a public hearing for May 4, 2010, to receive testimony regarding the annexation of Zone 150 to Landscaping and Lighting Maintenance District No. 89-1-Consolidated (L&LMD No. 89-1-C). Annexation of Zone 150 will fund the maintenance and servicing of, and the provision of electricity for, traffic signals within public rights-of-way located at the intersection of Benton Rd and Temeku St in the French Valley area and includes 1 commercial parcel, totaling 1.39 acre(s).

On March 17, 2010 a notice of the public hearing and mail-in ballot, an impartial analysis, a copy of Resolution No. 2010-075, and an information sheet was mailed to all property owners within Zone 150, proposed for annexation to L&LMD No. 89-1-C. Pursuant to the notice, all ballots must be returned prior to the conclusion of the public hearing.

Notice of the public hearing was also given by publication of a certified copy of Resolution No. 2010-075 in an appropriate newspaper at least ten (10) days prior to the public hearing date and by posting a certified copy of the Resolution No. 2010-075 on the official bulletin board customarily used by the Board of Supervisors for the posting of notices and in two other public locations within the County.

246A

# COUNTY OF RIVERSIDE STATE OF CALIFORNIA



**ENGINEER'S REPORT FOR FISCAL YEAR 2010-11**

**for**

**LANDSCAPING AND LIGHTING MAINTENANCE  
DISTRICT NO. 89-1-CONSOLIDATED  
ZONE 150  
(FRENCH VALLEY)**

**PREPARED BY:**

**RIVERSIDE COUNTY  
TRANSPORTATION DEPARTMENT  
FEBRUARY 25, 2010**

**AGENCY: COUNTY OF RIVERSIDE, CALIFORNIA**

**PROJECT: LANDSCAPING AND LIGHTING MAINTENANCE DISTRICT  
NO. 89-1-CONSOLIDATED - ZONE 150 ANNEXATION**

**TO: BOARD OF SUPERVISORS**

**ENGINEER'S REPORT  
FOR FISCAL YEAR 2010-11**

Pursuant to the provisions of Section 22565 through 22574 of the Landscaping and Lighting Act of 1972, said act being Part 2 of Division 15 of the Streets and Highways Code of the State of California, Section 4 of Article XIID of the California Constitution, and direction from the Board of Supervisors of Riverside County, California submitted herewith is the Report for Landscaping and Lighting Maintenance District No. 89-1-Consolidated - Zone 150 Annexation consisting of four (4) parts as follows:

**PART I**

A general description and plans of the traffic signal improvements proposed to be funded.

**PART II**

An estimate of the cost of the traffic signal improvements and maintenance including incidental costs and expenses in connection therewith for fiscal year 2010-11, is as set forth on the lists thereof, attached hereto.

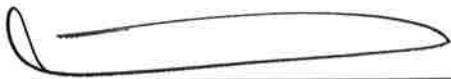
### **PART III**

A diagram showing Landscaping and Lighting Maintenance District No. 89-1-Consolidated, Zone 150 Annexation, the lines and dimensions of each parcel of land within said Zone 150, as the same exists on the maps of the Assessor of Riverside County for fiscal year 2010-11 is filed in the Office of the Riverside County Transportation Department. A reduced copy thereof is filed herewith and made a part hereof. Any changes in organization for said District (i.e. annexation) is discussed in this part.

### **PART IV**

A proposed assessment of the total costs and expense of the proposed improvements for fiscal year 2010-11 upon each parcel of land within said Zone 150, in proportion to the estimated benefits to be received by such parcels from said traffic signal improvements, is set forth upon the assessment roll filed herewith and made a part hereof.

Dated February 25, 2010



---

Juan C. Perez, Director of Transportation  
Landscaping and Lighting Maintenance District No. 89-1-Consolidated, Zone 150,  
County of Riverside, California

**PART I**

**DESCRIPTION OF IMPROVEMENTS AND MAINTENANCE PLANS FOR  
FISCAL YEAR 2010-11  
LANDSCAPING AND LIGHTING MAINTENANCE DISTRICT  
NO. 89-1-CONSOLIDATED, ZONE 150  
COUNTY OF RIVERSIDE, CALIFORNIA**

**Description of Improvements**

Improvements to be funded by Zone 150 of Landscaping and Lighting Maintenance District No. 89-1-Consolidated generally include the maintenance and servicing of, and the provision of electricity for, traffic signals within the public right-of-way:

- At the intersection of Benton Rd and Temeku St

**Maintenance Plans**

Pursuant to Section 22568 of the Landscaping and Lighting Act of 1972 maintenance plans are included on the following pages:

LANDSCAPING AND LIGHTING MAINTENANCE DISTRICT NO. 89-1-CONSOLIDATED

**ZONE 150**

PORTION OF SECTION 6, T.7S., R.2W.

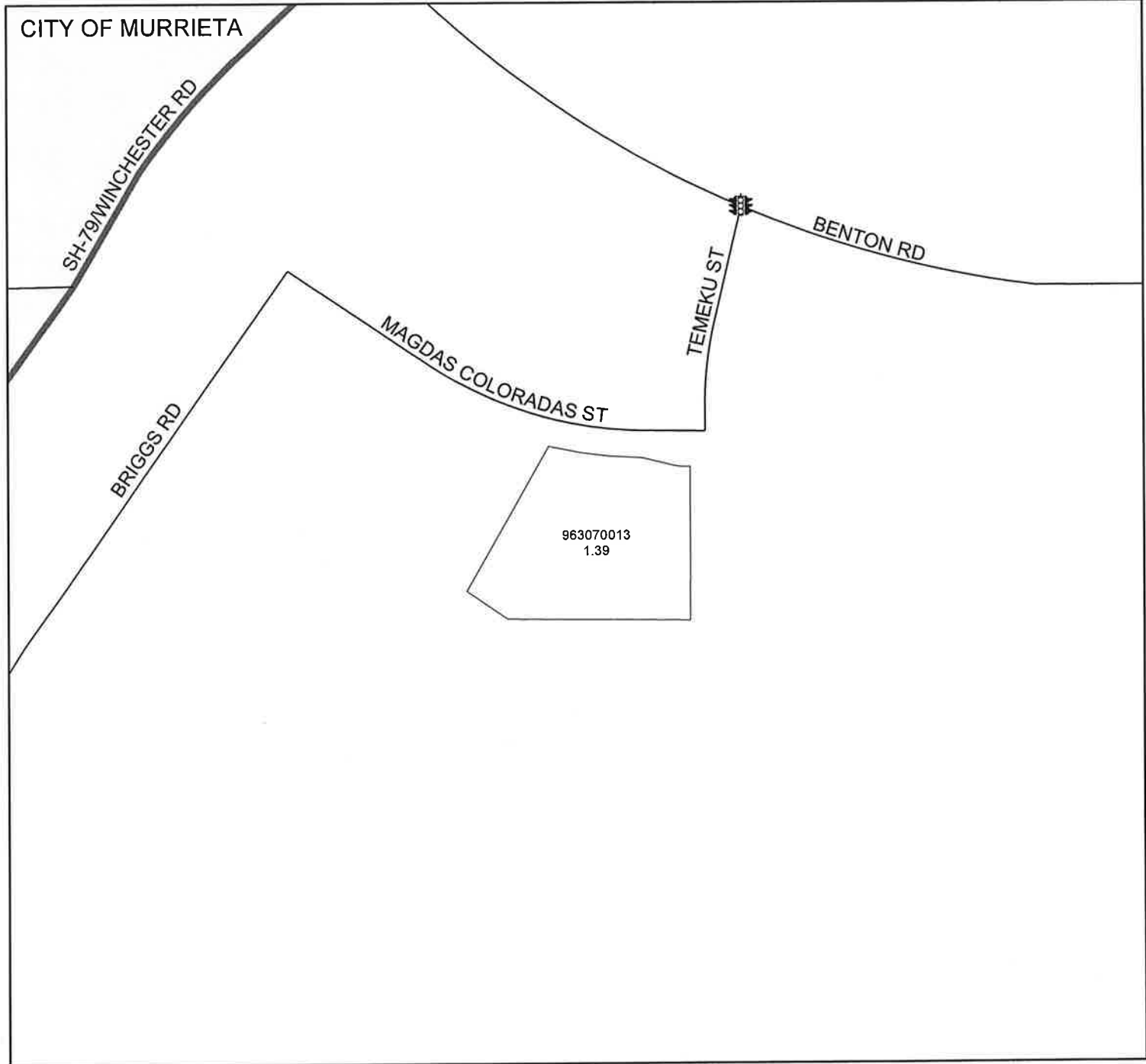
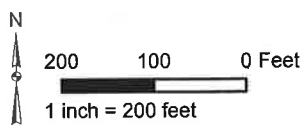
PLOT PLAN NO. 23975

1 PARCEL



The County of Riverside assumes no warranty or legal responsibility for the information contained on this map. Data and information represented on this map is subject to updates, modifications and may not be complete or appropriate for all purposes. County GIS and other sources should be queried for the most current information. Do not copy or reuse this map.

Printed by jpickeri on 2/3/10



 DENOTES MAINTAINED TRAFFIC SIGNAL

**PART II**

**ENGINEER'S ESTIMATE OF COSTS AND EXPENSES  
FOR FISCAL YEAR 2010-11  
LANDSCAPING AND LIGHTING MAINTENANCE DISTRICT  
NO. 89-1-CONSOLIDATED, ZONE 150  
COUNTY OF RIVERSIDE, CALIFORNIA**

The cost estimate contains each of the items specified in Section 22569 of the Landscaping and Lighting Act of 1972.

**Cost Estimate for Zone 150**

**Costs for Maintenance of Improvements**

Maintenance <sup>1</sup> & Servicing <sup>2</sup> of the Traffic Signals	\$550
Administrative Costs <sup>3</sup>	<u>28</u>
<b>Total Amount to be Assessed for FY 2010-11</b>	<b>\$578</b>

<sup>1</sup>Maintenance means the furnishing of services and materials for the ordinary and usual maintenance, operation, and servicing of traffic signals, and appurtenances including repair and replacement.

<sup>2</sup>Servicing means funding of energy costs for traffic signals.

<sup>3</sup>Administrative Costs include County administration, preparation of Engineer's Report, and County Auditor-Controller fees.



**LANDSCAPING AND LIGHTING MAINTENANCE DISTRICT NO. 89-1-CONSOLIDATED  
 ZONE 150  
 SUMMARY  
 ANNUAL BUDGET  
 FISCAL YEAR 2010-11**

<b>QUANTITY</b>	<b>COST PER TRAFFIC SIGNAL</b>	<b>TOTAL FOR TRAFFIC SIGNALS</b>	<b>ANNUAL ADMIN. COST</b>	<b>ANNUAL RATE</b>
1	\$ 550	\$ 550	\$ 28	\$ 578

<b>TOTAL BUDGET</b>	<b>\$ 578</b>
<b>FISCAL YEAR 2010-11 ASSESSMENT</b>	<b>\$ 415.82/acre</b>

1.39 acre(s)

**PART III**

**ASSESSMENT DIAGRAM AND CHANGES IN ORGANIZATION  
FOR FISCAL YEAR 2010-11  
LANDSCAPING AND LIGHTING MAINTENANCE DISTRICT  
NO. 89-1-CONSOLIDATED, ZONE 150  
COUNTY OF RIVERSIDE, CALIFORNIA**

**Assessment Diagram**

A reduced copy of the Assessment Diagram is filed herewith and made a part hereof.

**Changes in Organization**

Zone 150

Annexation of Zone 150 as described and shown in Exhibit "A" is filed herewith and made a part hereof changes the organization for this District for Fiscal Year 2010-11.

LANDSCAPING AND LIGHTING MAINTENANCE DISTRICT NO. 89-1-CONSOLIDATED

**ZONE 150**

PORTION OF SECTION 6, T.7S., R.2W.

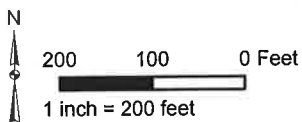
PLOT PLAN NO. 23975

1 PARCEL

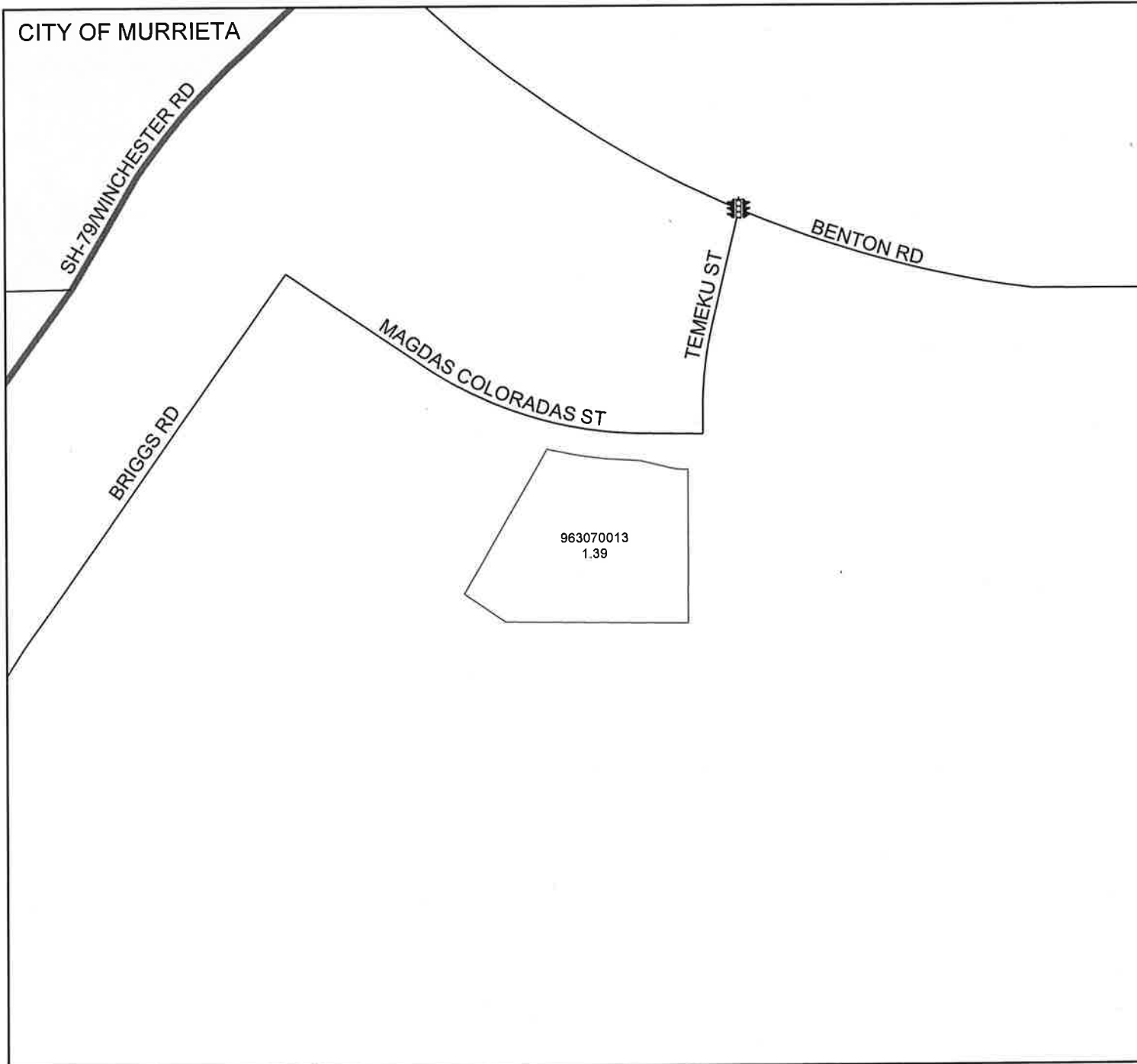


The County of Riverside assumes no warranty or legal responsibility for the information contained on this map. Data and information represented on this map is subject to updates, modifications and may not be complete or appropriate for all purposes. County GIS and other sources should be queried for the most current information. Do not copy or resell this map.

Printed by jpickeri on 2/3/10



**ASSESSMENT DIAGRAM**



 DENOTES MAINTAINED TRAFFIC SIGNAL

**PART IV**

**ASSESSMENT FOR FISCAL YEAR 2010-11  
LANDSCAPING AND LIGHTING MAINTENANCE DISTRICT  
NO. 89-1-CONSOLIDATED, ZONE 150  
COUNTY OF RIVERSIDE, CALIFORNIA**

**"LANDSCAPING AND LIGHTING ACT OF 1972", DIVISION 16 OF THE  
STREETS AND HIGHWAYS CODE OF THE STATE OF CALIFORNIA**

WHEREAS, on March 16, 2010 the Board of Supervisors of the County of Riverside, State of California, did, pursuant to the provisions of the "Landscaping and Lighting Act of 1972", being Division 15 of the Streets and Highways Code of the State of California, adopt Resolution No. 2010-074 ordering the preparation of the engineer's report for a special assessment district known and designated as:

Landscaping and Lighting Maintenance District No. 89-1-Consolidated, Zone 150 (herein referred to as "District"); and,

WHEREAS, the Board of Supervisors, did direct the appointed Engineer to make and file a "Report", in accordance with Article 4 (commencing with Section 22565) of Chapter 1 of Part 2 of Division 15 of the Streets and Highways Code, being an article of the aforementioned Landscaping and Lighting Act of 1972.

WHEREAS, Section 22567 of said Article 4 states the "Report" shall consist of the following;

- a. Maintenance plans for the traffic signal improvements
- b. An estimate of the costs of servicing traffic signal improvements
- c. A diagram for the assessment district
- d. An assessment of the estimated costs of maintenance of the improvements

NOW, THEREFORE, I, the appointed ENGINEER, pursuant to the 'Landscaping Act of 1972", do hereby submit the following:

1. Pursuant to the provisions of law the costs and expenses of the District have been assessed upon the parcels of land in the District benefited thereby in direct proportion and relation to the estimated benefits to be received by each of said parcels. For particulars as to the identification of said parcel, reference is made to the Assessment Diagram, a reduced copy of which is included herein.
2. As required by law, a Diagram is filed herewith, showing the District, as well as the boundaries and dimensions of the respective parcels and subdivisions of land within said District as the same exist each of which subdivisions of land or parcels or lots, respectively, have been given a separate number upon said Diagram and in the Assessment Roll contained herein.
3. The separate numbers given the subdivisions and parcels of land, as shown on said Assessment Diagram and Assessment Roll, correspond with the numbers assigned to each parcel by the Riverside County Assessor. Reference is made to the County Assessment Roll for a description of the lots or parcels.
4. There are no parcels or lots within Zone 150 that are owned by a federal, state or other local governmental agency that will benefit from the services to be provided by the assessments to be collected.

#### **Method of Assessment Apportionment**

The law requires and the statutes provide that assessments, as levied pursuant to the "Landscaping and Lighting Act of 1972" be based on the benefit properties receive. The statutes do not specify the method or formula that should be used to apportion the assessment in any special assessment district proceedings.

The maintenance of traffic signals provides direct and special benefit to those properties located within Zone 150 in Landscaping and Lighting Maintenance District No. 89-1-Consolidated (DISTRICT). Traffic signals enhance the properties within the DISTRICT, improve neighborhood protection, allow traffic into and out of the development, and provide an enhanced quality of life and sense of well being for properties within the DISTRICT.

The costs and expenses for the traffic signal improvements within Zone 150 are apportioned on a per parcel basis and do not exceed 10% per signal of the total maintenance cost.

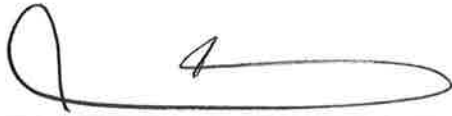
The dollar per acre value for Fiscal Year 2010-11 for Zone 150 is as follows:

$$\begin{array}{rcl} \text{Total Budget} & = & \underline{\$578} \\ \text{Total No. Acres} & 1.39 & = \quad \$415.82/\text{acre} \end{array}$$

The assessment for Fiscal Year 2010-11 for Zone 150 that is to be annexed into Landscaping and Lighting Maintenance District No. 89-1-Consolidated will be \$415.82 per acre. The annual assessment will be increased by the greater of two percent (2.0%) or the cumulative percentage increase, if any, in the Consumer Price Index for all Urban Consumers for "electricity" ("CPI-U" "electricity") for the Los Angeles-Riverside-Orange County California Standard Metropolitan Statistical area ("Index") published by the Bureau of Labor Statistics of United States Department of Labor. The annual "CPI-U" "electricity" adjustment will be based on the cumulative increase, if any, in the Index as it stands on March of each year over the base Index for March of 2010. Any increase larger than the greater of 2.0% or the "CPI-U" "electricity" annual adjustment requires a majority approval of all the property owners within Zone 150.

In conclusion, it is my opinion that the assessments for Landscaping and Lighting Maintenance District No. 89-1-Consolidated, Zone 150 have been spread in direct accordance with the benefits that each parcel receives from the items being financed.

Dated February 25, 2010

A handwritten signature in black ink, consisting of a large loop on the left and a long horizontal stroke extending to the right.

---

Juan C. Perez, Director of Transportation

Landscaping and Lighting Maintenance District No. 89-1-Consolidated, Zone 150,  
County of Riverside, California

APN

ACRES

ASSESSMENT

963-070-013

1.39

577.98



**SUBMITTAL TO THE BOARD OF SUPERVISORS  
COUNTY OF RIVERSIDE, STATE OF CALIFORNIA**

*246A*



**FROM:** TLMA - Transportation Dept.

**SUBMITTAL DATE:**  
March 4, 2010

**SUBJECT:** Landscaping and Lighting Maintenance District No. 89-1-Consolidated,  
Annexation of Zone 150 (French Valley).

**RECOMMENDED MOTION:** That the Board adopt the following Resolutions:

Resolution No. 2010-074 a Resolution of the County of Riverside initiating proceedings for the annexation of Zone 150 to Landscaping and Lighting Maintenance District No. 89-1-Consolidated and ordering preparation of the Engineer's Report regarding the proposed annexation of Zone 150.

Resolution No. 2010-075, a Resolution of the County of Riverside declaring its intent to order the annexation of Zone 150 to Landscaping and Lighting Maintenance District No. 89-1-Consolidated of the County of Riverside pursuant to the Landscaping and Lighting Act of

\_\_\_\_\_  
Juan C. Perez  
Director of Transportation

MH:jp

FORM APPROVED COUNTY COUNSEL  
BY: Dale A. Gardner 2/25/10  
DATE

Departmental Concurrence

<b>FINANCIAL DATA</b>	Current F.Y. Total Cost:	\$0	In Current Year Budget:	N/A
	Current F.Y. Net County Cost:	\$0	Budget Adjustment:	N/A
	Annual Net County Cost:	\$0	For Fiscal Year:	2009-10
<b>SOURCE OF FUNDS:</b> Landscaping and Lighting Maintenance District No. 89-1-Consolidated – 100%			<b>Positions To Be Deleted Per A-30</b>	<input type="checkbox"/>
			<b>Requires 4/5 Vote</b>	<input type="checkbox"/>

**C.E.O. RECOMMENDATION:**

APPROVE

BY:   
Tina Grande

**County Executive Office Signature**

**MINUTES OF THE BOARD OF SUPERVISORS**

On motion of Supervisor Buster, seconded by Supervisor Stone and duly carried, IT WAS ORDERED that the above resolutions are adopted as recommended, and that the matter is set for public hearing on Tuesday, May 4, 2010 at 9:30 a.m.

Ayes: Buster, Stone, Benoit, and Ashley  
Nays: None  
Absent: Tavaglione  
Date: March 16, 2010  
xc: Transportation., COB(2)

Kecia Harper-Ihem  
Clerk of the Board  
By:   
Deputy

**Prev. Agn. Ref.** | **District: 3** | **Agenda Number:**

**3.59**

ATTACHMENTS FILED  
WITH THE CLERK OF THE BOARD

The Honorable Board of Supervisors

RE: Landscaping and Lighting Maintenance District No. 89-1-Consolidated, Annexation of Zone 150 (French Valley).

March 4, 2010

Page 2 of 2

1972 for the maintenance and servicing of, and the provision of electricity for, traffic signals; adopting the preliminary engineer's report; giving notice of and setting the time and place of the public hearing on the annexation of Zone 150, ordering a mailed ballot election; and directing notice of the public hearing and ballot be mailed pursuant to Article XIID of the California Constitution.

**BACKGROUND:** Adoption of Resolution No. 2010-074 appoints the Director of the Transportation Department as the Engineer to prepare a Report regarding the proposed annexation of Zone 150 to Landscaping and Lighting Maintenance District No. 89-1-Consolidated ("L&LMD No. 89-1-C").

Resolution No. 2010-075 declares the Board's intention of ordering the annexation of Zone 150 to L&LMD No. 89-1-C. Annexation of Zone 150 to L&LMD No. 89-1-C will fund the maintenance and servicing of, and the provision of electricity for, traffic signals within public right-of-way located at the intersection of Benton Rd and Temeku St in the French Valley area and includes 1 commercial parcel, totaling 1.39 acre(s).

The proposed budget for fiscal year 2010-11 for Zone 150 is \$578 that will result in an assessment for fiscal year 2010-11 within Zone 150 of \$415.82 per acre. The annual assessment will be adjusted annually by the greater of 2% or the cumulative percentage increase in the CPI-U for "electricity", if any, as it stands as of March of each year over the base index for March of 2010.

Consistent with the Board's direction regarding compliance with Article XIID of the California Constitution and the Landscaping and Lighting Act of 1972, the attached resolutions have been prepared and a public hearing scheduled for 9:30 a.m. on May 4, 2010 to receive testimony for and against the proposed assessment. Each property owner within the proposed Zone 150 will receive a notice of the public hearing and mail-in ballot, an impartial analysis, a copy of Resolution No. 2010-075, and an information sheet.

Ballots must be returned prior to the conclusion of the public hearing. If, at the time designated for the tabulation of the ballots, the ballots submitted in favor of the annexation and levy of the assessment exceed the ballots submitted in opposition of said annexation and levy, Zone 150 will be annexed to L&LMD No. 89-1-C.

2 RESOLUTION NO. 2010-074

3  
4 **RESOLUTION OF THE BOARD OF SUPERVISORS OF THE COUNTY OF RIVERSIDE INITIATING**  
5 **PROCEEDINGS FOR THE ANNEXATION OF ZONE 150 TO LANDSCAPING AND LIGHTING**  
6 **MAINTENANCE DISTRICT NO. 89-1-CONSOLIDATED OF THE COUNTY OF RIVERSIDE**  
7 **PURSUANT TO THE LANDSCAPING AND LIGHTING ACT OF 1972 AND ORDERING**  
8 **PREPARATION OF ENGINEER'S REPORT REGARDING SAID ANNEXATION**

9 **WHEREAS**, the Board of Supervisors (hereinafter the "Board of Supervisors") of the County of  
10 Riverside (hereinafter the "County") has been advised by the Transportation Department (hereinafter  
11 "Department") of the County that said Department has received an application from the owner (the  
12 "Applicant") of all the property within the unincorporated area of the County (hereinafter "Zone 150"),  
13 as shown and described in Exhibit "A", which is attached hereto and made a part hereof, to be  
14 annexed to Landscaping and Lighting Maintenance District No. 89-1-Consolidated (hereinafter  
15 "L&LMD No. 89-1-C") of the County of Riverside, State of California, and the Board of Supervisors has  
16 determined that it is necessary and desirable to initiate proceedings for the annexation of Zone 150 to  
17 L&LMD No. 89-1-C pursuant to the Landscaping and Lighting Act of 1972, Part 2 (commencing with  
18 Section 22500) of Division 15 of the Streets and Highways Code (hereinafter, respectively, the "Act"  
19 and the "Street and Highways Code"); and

20 **WHEREAS**, such proceedings shall comply with the requirements of Article XIID of the  
21 California Constitution and Section 4000 of the Elections Code requiring voter approval of the  
22 proposed assessment to be levied by L&LMD No. 89-1-C for Zone 150; and

23 **WHEREAS**, the Director of the Department, or his designee, is a licensed and registered civil  
24 engineer, has expertise with respect to the annexation of territory to landscaping and lighting  
25 maintenance districts and the levying of assessments for said purposes and, therefore, is able to serve  
26 as the engineer (hereinafter the "Engineer") for the County with regard to the annexation of Zone 150  
to L&LMD No. 89-1-C.

FORM APPROVED COUNTY COUNSEL  
BY: *Maria A. Gardner*  
DATE: 2/23/10  
MARIA GARDNER

1 NOW, THEREFORE, BE IT RESOLVED, FOUND, DETERMINED AND ORDERED by the  
2 Board of Supervisors of the County of Riverside assembled in regular session on March 16, 2010 as  
3 follows:

4 **Section 1. Recitals.** The Board of Supervisors hereby finds and determines that all  
5 the above recitals are true and correct.

6 **Section 2. Annexation.** The Board of Supervisors proposes to annex Zone 150 to  
7 L&LMD No. 89-1-C and to initiate and conduct proceedings therefore pursuant to the Act for the  
8 purpose of levying an annual assessment on all parcels within Zone 150 to pay the costs of the  
9 following services:

- 10 (a) Providing electricity to and the maintenance and servicing of traffic signals within  
11 the public right-of-way including incidental costs and expenses.

12 **Section 3. Boundaries and Designation.** The boundaries of Zone 150 that are  
13 proposed to be annexed to L&LMD No. 89-1-C shall include all of the property as shown and  
14 described in Exhibit "A".

15 **Section 4. Report.** The Director of the Department of the County, or his designee,  
16 is hereby designated Engineer and is ordered to prepare and file a report with the Clerk of the Board  
17 of Supervisors in accordance with Sections 22608 and 22585 et. seq. of the Streets and Highways  
18 Code and Section 4 of Article XIID of the California Constitution regarding said annexation and the  
19 levy.

20 **Section 5. Effective Date.** This Resolution shall take effect from and after its date  
21 of adoption.

22 ROLL CALL:

23 Ayes: Buster, Stone, Benoit, and Ashley  
24 Nays: None  
Absent: Tavaglione

25 The foregoing is certified to be a true copy of a resolution duly  
26 adopted by said Board of Supervisors on the date therein set forth.

KECIA HARPER-IHEM, Clerk of said Board

By:   
Deputy

**EXHIBIT "A"**  
**DESCRIPTION OF BOUNDARIES**

The boundaries of Zone 150 to be annexed into Landscaping and Lighting Maintenance District No. 89-1-Consolidated, of the County of Riverside are coterminous with the boundaries of APN 963-070-013 as shown on Assessment Roll in the County of Riverside, State of California in Fiscal Year 2010-11.

1  
2  
3  
4  
5  
6  
7  
8  
9  
10  
11  
12  
13  
14  
15  
16  
17  
18  
19  
20  
21  
22  
23  
24

# ZONE 150

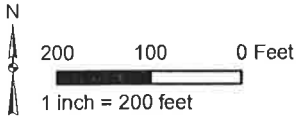
PORTION OF SECTION 6, T.7S., R.2W.

PLOT PLAN NO. 23975

1 PARCEL

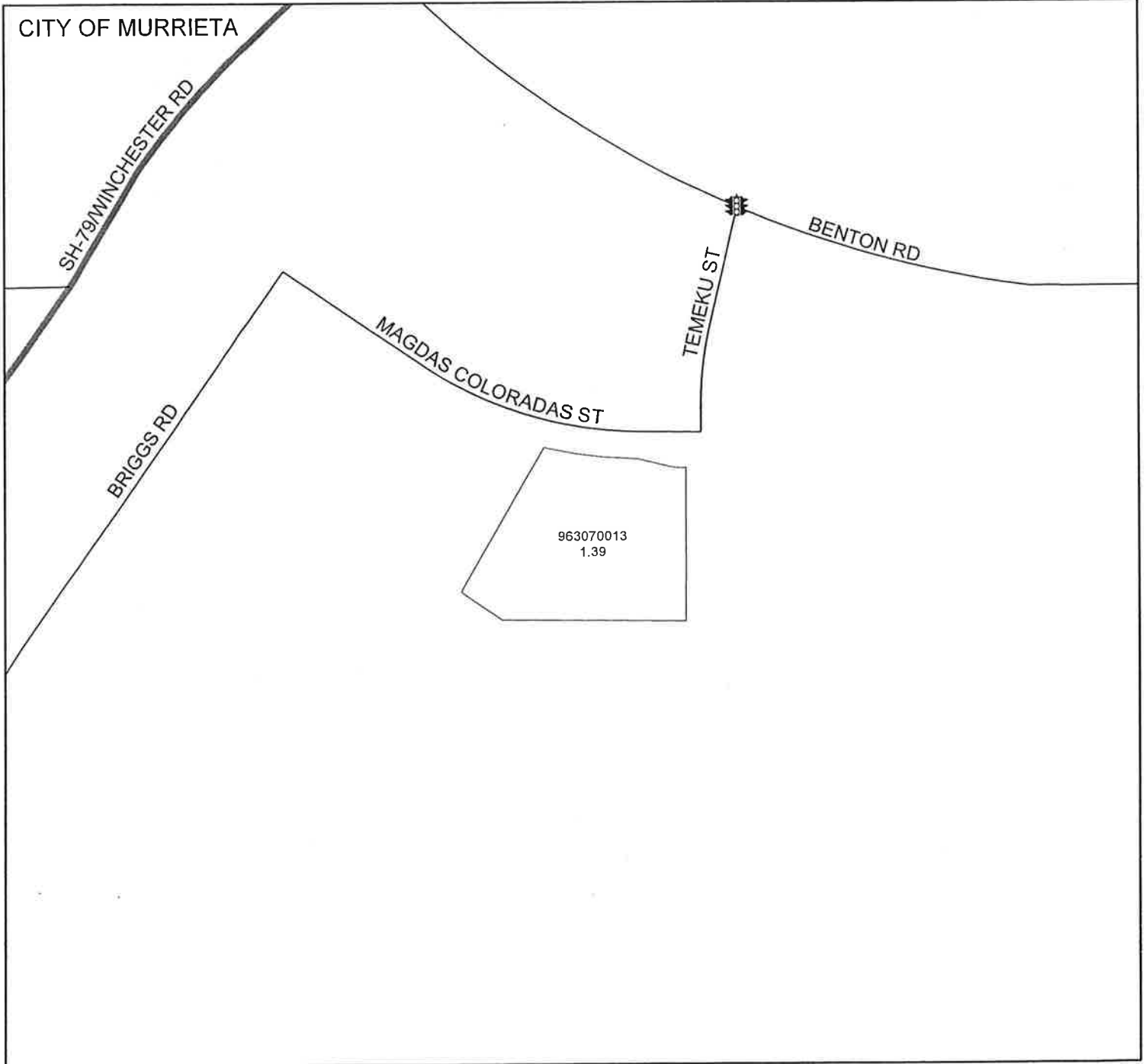


The County of Riverside assumes no warranty or legal responsibility for the information contained on this map. Data and information presented on this map is subject to updates, modifications and may not be complete or appropriate for all purposes. County GIS and other sources should be queried for the most current information. Do not copy or resell this map.



## ASSESSMENT DIAGRAM

Printed by jpickeri on 2/3/10



DENOTES MAINTAINED TRAFFIC SIGNAL

2 RESOLUTION NO. 2010-075

3 RESOLUTION OF THE BOARD OF SUPERVISORS OF THE COUNTY OF RIVERSIDE DECLARING  
4 ITS INTENT TO ORDER THE ANNEXATION OF ZONE 150 TO LANDSCAPING AND LIGHTING  
5 MAINTENANCE DISTRICT NO. 89-1-CONSOLIDATED OF THE COUNTY OF RIVERSIDE  
6 PURSUANT TO THE LANDSCAPING AND LIGHTING ACT OF 1972 FOR THE MAINTENANCE  
7 AND SERVICING OF TRAFFIC SIGNALS; ADOPTING THE PRELIMINARY ENGINEER'S REPORT;  
8 GIVING NOTICE OF AND SETTING THE TIME AND PLACE OF THE PUBLIC HEARING ON THE  
9 ANNEXATION OF ZONE 150; ORDERING AN ASSESSMENT PROCEEDING; ORDERING A  
10 MAILED BALLOT ELECTION; AND DIRECTING NOTICE OF THE PUBLIC HEARING AND THE  
11 ASSESSMENT BALLOT TO BE MAILED PURSUANT TO ARTICLE XIID OF THE CALIFORNIA  
12 CONSTITUTION AND SECTION 4000 OF THE ELECTIONS CODE

13 **WHEREAS**, the Board of Supervisors (hereinafter the "Board of Supervisors") of the County of  
14 Riverside (hereinafter the "County") has adopted Resolution No. 2010-074 on March 16, 2010 initiating  
15 proceedings for the annexation of Zone 150 (hereinafter "Zone 150"), as described and shown in  
16 Exhibit "A", which is attached hereto and incorporated herein, to Landscaping and Lighting  
17 Maintenance District No. 89-1-Consolidated of the County of Riverside, State of California, (hereinafter  
18 "L&LMD No. 89-1-C") pursuant to the Landscaping and Lighting Act of 1972 (hereinafter the "Act"),  
19 which is Part 2 (commencing with Section 22500) of Division 15 of the Streets and Highways Code  
20 (hereinafter the "Street and Highways Code"), and ordering the preparation of a report (hereinafter the  
21 "Report") regarding the proposed annexation of Zone 150 and the assessments to be levied within  
22 Zone 150 each fiscal year beginning fiscal year 2010-11 for the the maintenance and servicing of, and  
23 the provision of electricity for, traffic signals within the public right-of-way within said Zone; and

24 **WHEREAS**, such proceedings shall comply with the requirements of Article XIID of the  
25 California Constitution (hereinafter "Article XIID:"), the Act, and Section 4000 of the Elections Code  
26 requiring voter approval of the proposed assessment to be levied by L&LMD No. 89-1-C for Zone 150;  
and

**WHEREAS**, the Board of Supervisors by Resolution No. 2010-074 directed the Director of the  
Transportation Department, or his designee (hereinafter the "Engineer"), to prepare and file the Report

FORM APPROVED COUNTY COUNSEL  
BY *DANE A. GARDNER* 2/23/10  
DATE  
DANE A. GARDNER

1 with the Clerk of the Board of Supervisors in accordance with Sections 22608 and 22585 et. seq. of the  
2 Street and Highways Code and Section 4 of Article XIID; and

3 **WHEREAS**, said Engineer has filed the Report with the Clerk of the Board of Supervisors and  
4 the Report has been presented to and considered by the Board of Supervisors; and

5 **WHEREAS**, it is necessary that the Board of Supervisors adopt a resolution of intention  
6 pursuant to Section 22624 of the Streets and Highways Code, which fixes and gives notice, pursuant to  
7 Section 22626 of the Streets and Highways Code, of the time and place of a public hearing on said  
8 Report, the annexation of Zone 150, and the assessments to be levied on parcels within Zone 150  
9 beginning in fiscal year 2010-11;

10 **NOW, THEREFORE, BE IT RESOLVED, FOUND, DETERMINED AND ORDERED** by the  
11 Board of Supervisors in regular session assembled on March 16, 2010 as follows:

12 **Section 1. Findings.** The Board of Supervisors, after reviewing the Report, finds that:

- 13 (a) The foregoing recitals are true and correct;
- 14 (b) The Report contains all matters required by Sections 22565 through 22574 of the  
15 Streets and Highways Code and Section 4 of Article XIID and may, therefore, be  
16 approved by the Board of Supervisors;
- 17 (c) The annual assessment for fiscal year 2010-11 on all parcels within Zone 150 proposed  
18 to be annexed to L&LMD No. 89-1-C will be \$415.82 per acre.

19 **Section 2. Intent.** The Board of Supervisors hereby declares its intention to order the  
20 annexation of Zone 150, as described and shown in Exhibit "A", to L&LMD No. 89-1-C, and to levy and  
21 collect an annual assessment on all assessable lots and parcels of property within Zone 150  
22 commencing with the fiscal year 2010-11 as set forth in the Report. The Report expressly states that  
23 there are no parcels or lots within Zone 150 that are owned by a federal, state or other local  
24 governmental agency that will benefit from the services to be financed by the annual assessments. The  
25 annual assessments will be collected at the same time and in the same manner as property taxes are  
26



1 collected, and all laws providing for the collection and enforcement of property taxes shall apply to the  
2 collection and enforcement of said assessments.

3 **Section 3. Boundaries.** All the property within boundaries of Zone 150 is proposed to be  
4 annexed into L&LMD No. 89-1-C and shall include that property in the unincorporated area of the  
5 County as described and shown in Exhibit "A".

6 **Section 4. Description of Services to be Provided.** The maintenance and servicing of,  
7 and the provision of electricity for, traffic signals authorized for Zone 150 of L&LMD No. 89-1-C are:

- 8 (a) Providing electricity to and the maintenance and servicing of traffic signals within the  
9 public right-of-way including incidental costs and expenses.

10 **Section 5. Amount to be Levied.** The assessment to be levied upon each parcel that  
11 benefits from the annexation of Zone 150 of L&LMD No. 89-1-C will be \$415.82 per acre for fiscal year  
12 2010-11. As stated in the Report, the total budget for Zone 150 for the fiscal year 2010-11 is \$578;  
13 there is 1 parcel that are to be assessed that aggregate to 1.39 acres. The annual assessment will be  
14 increased by the greater of two percent (2.0%) or the cumulative percentage increase, if any, in the  
15 Consumer Price Index for all Urban Consumers for "electricity" ("CPI-U") for the Los Angeles-  
16 Riverside-Orange County California Standard Metropolitan Statistical area ("Index") published by the  
17 Bureau of Labor Statistics of the United States Department of Labor. The annual CPI-U adjustment will  
18 be based on the cumulative increase, if any, in the Index as it stands on March of each year over the  
19 base Index for March of 2010. Any increase larger than the greater of 2.0% or the CPI-U annual  
20 adjustment requires a majority approval of all the property owners within Zone 150. The Board of  
21 Supervisors will levy the assessment in each subsequent fiscal year until the Board of Supervisors  
22 undertakes proceedings for the dissolution of Zone 150 of L&LMD No. 89-1-C. The annual assessment  
23 will fund the services described in Section 4 of this Resolution. For further particulars, reference is to be  
24 made to the Report on file in the Office of the Clerk of the Board of Supervisors.

1           **Section 6.    The Property to be Annexed.** The property to be annexed into L&LMD No.  
2 89-1-C is Zone 150. The boundaries of Zone 150 are located within the unincorporated area of the  
3 County and are described and shown in the Report and Exhibit "A".

4           **Section 7.    Report.** The Report, which is on file with the Clerk of the Board of Supervisors  
5 and which has been presented to the Board of Supervisors, is hereby approved. Reference is made to  
6 the Report for a full and detailed description of the services, the boundaries of Zone 150, and the  
7 annual assessment to be levied upon assessable lots and parcels within Zone 150 proposed to be  
8 annexed to L&LMD No. 89-1-C.

9           **Section 8.    Public Hearing.** The question of whether Zone 150 shall be annexed into  
10 L&LMD No. 89-1-C and an annual assessment levied beginning with fiscal year 2010-11 shall be  
11 considered at a public hearing (hereinafter the "Public Hearing") to be held on May 4, 2010, at 9:30  
12 a.m. at the meeting room of the Board of Supervisors of the County at 4080 Lemon Street, 1<sup>st</sup> Floor,  
13 Riverside, California.

14           **Section 9.    Majority Protest.** Each owner of record of property within Zone 150 is to receive  
15 by mail an assessment ballot that shall conform to the requirements of Section 4 of Article XIII D and  
16 Section 4000 of the California Elections Code. The assessment ballots are to be returned prior to the  
17 Public Hearing. L&LMD No. 89-1-C shall not impose assessments on property within the boundaries of  
18 Zone 150 if there is a majority protest with regard to the annexation of Zone 150. A majority protest  
19 exists if, upon the conclusion of the Public Hearing, the tabulation of the assessment ballots submitted  
20 in opposition to the annexation and assessment of Zone 150 exceeds the assessment ballots in favor  
21 of the annexation and assessment of Zone 150.

22           **Section 10. Information.** Any property owner desiring additional information regarding  
23 Zone 150 of L&LMD No. 89-1-C, the Report, or the proposed assessment is to contact Ms. Joan  
24 Pickering, Engineering Technician II, Transportation Department of the County of Riverside, 4080  
25 Lemon Street, 8th Floor, Riverside, California, 92501 or by telephone at (951) 955-6748.  
26

1  
2  
3  
4  
5  
6  
7  
8  
9  
10  
11  
12  
13  
14  
15  
16  
17  
18  
19  
20  
21  
22  
23  
24  
25  
26

**Section 11. Notice of the Public Hearing.** Notice of Public Hearing with regard to the annexation of Zone 150 to L&LMD No. 89-1-C shall be given consistent with Section 22626 of the Streets and Highways Code and Section 4 of Article XIID. The Clerk of the Board of Supervisors shall give notice of the Public Hearing by causing a certified copy of this Resolution to be published once in an appropriate newspaper at least ten (10) days prior to the date of the Public Hearing that is May 4, 2010. Publication of this Resolution is to be effected by the Clerk of the Board of Supervisors. Notice shall also be given by mailing first-class, postage prepaid, those notices, as prepared by County Counsel, assessment ballot and information sheets as required by Section 4 of Article XIID and Section 4000 of the California Elections Code to all owners of record of property within Zone 150 as shown on the last equalized assessment roll of the County. Mailing is to be made by the Engineer and deposited with the U. S. Post Office at least forty-five (45) days prior to the Public Hearing on May 4, 2010.

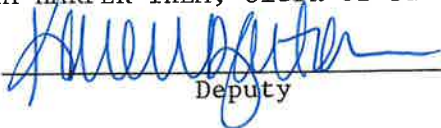
**Section 12. Effective Date.** This Resolution shall take effect from and after its date of adoption.

ROLL CALL:

Ayes: Buster, Stone, Benoit, and Ashley  
Nays: None  
Absent: Tavaglione

The foregoing is certified to be a true copy of a resolution duly adopted by said Board of Supervisors on the date therein set forth.

KECIA HARPER-IHEM, Clerk of said Board

By:   
Deputy

**EXHIBIT "A"**  
**DESCRIPTION OF BOUNDARIES**

The boundaries of Zone 150 to be annexed into Landscaping and Lighting Maintenance District No. 89-1-Consolidated, of the County of Riverside are coterminous with the boundaries of APN 963-070-013 as shown on Assessment Roll in the County of Riverside, State of California in Fiscal Year 2010-11.

1  
2  
3  
4  
5  
6  
7  
8  
9  
10  
11  
12  
13  
14  
15  
16  
17  
18  
19  
20  
21  
22  
23  
24

# ZONE 150

PORTION OF SECTION 6, T.7S., R.2W.

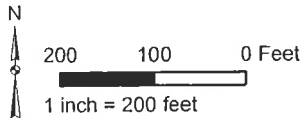
PLOT PLAN NO. 23975

1 PARCEL

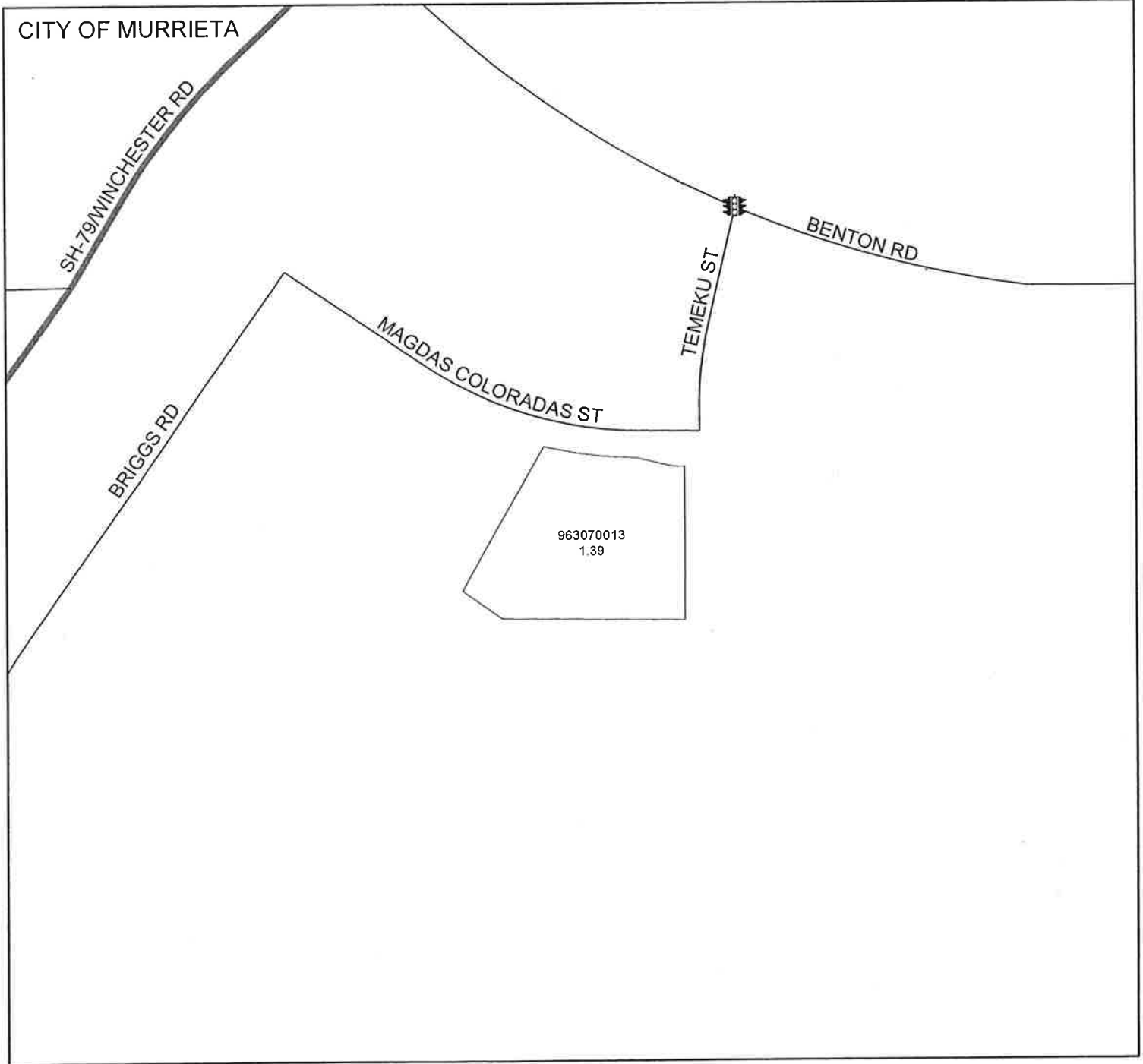


The County of Riverside assumes no warranty or legal responsibility for the information contained on this map. Data and information represented on this map is subject to updates, modifications and may not be complete or appropriate for all purposes. County GIS and other sources should be queried for the most current information. Do not copy or resell this map.

Printed by jpickeri on 2/3/10



## ASSESSMENT DIAGRAM



DENOTES MAINTAINED TRAFFIC SIGNAL



OFFICE OF  
CLERK OF THE BOARD OF SUPERVISORS  
1st FLOOR, COUNTY ADMINISTRATIVE CENTER  
P.O. BOX 1147, 4080 LEMON STREET  
RIVERSIDE, CA 92502-1147  
PHONE: (951) 955-1060  
FAX: (951) 955-1071

KECIA HARPER-IHEM  
Clerk of the Board of Supervisors

KIMBERLY A. RECTOR  
Assistant Clerk of the Board

April 15, 2010

THE PRESS ENTERPRISE  
ATTN: LEGALS  
P.O. BOX 792  
RIVERSIDE, CA 92501

VIA FAX: (951) 368-9018  
E-MAIL: [legals@pe.com](mailto:legals@pe.com)

**RE: NOTICE OF PUBLIC HEARING: RESOLUTION 2010-075 ZONE 150**

To Whom It May Concern:

Attached is a copy for publication in your newspaper for **ONE (1) TIME** on **Sunday, April 18, 2010**.

We require your affidavit of publication immediately upon completion of the last publication.

Your invoice must be submitted to this office in duplicate, **WITH TWO CLIPPINGS OF THE PUBLICATION.**

**NOTE: PLEASE COMPOSE THIS PUBLICATION INTO A SINGLE COLUMN FORMAT.**

Thank you in advance for your assistance and expertise.

Sincerely,

*McGil*

Cecilia Gil, Board Assistant to  
KECIA HARPER-IHEM, CLERK OF THE BOARD

## Gil, Cecilia

---

**From:** PE Legals [legals@pe.com]  
**Sent:** Wednesday, April 14, 2010 4:28 PM  
**To:** Gil, Cecilia  
**Subject:** RE: FOR PUBLICATION: RES. NO. 2010-075 ZONE 150

We have received for publication on 4/18

Holly Martindale  
Legal Advertising  
direct line ~ 951-368-9275  
fax ~ 951-368-9018



---

**From:** Gil, Cecilia [mailto:CCGIL@rcbos.org]  
**Sent:** Wednesday, April 14, 2010 4:26 PM  
**To:** PE Legals  
**Subject:** FOR PUBLICATION: RES. NO. 2010-075 ZONE 150

Good afternoon,

Attached is a Notice of Public Hearing, for publication on Sunday, April 18, 2010. Please confirm. THANK YOU!

*Cecilia Gil*

Board Assistant to the  
Clerk of the Board of Supervisors  
951-955-8464

**THE COUNTY ADMINISTRATIVE CENTER IS CLOSED EVERY FRIDAY UNTIL FURTHER NOTICE.  
PLEASE CONSIDER THE ENVIRONMENT BEFORE PRINTING.**

**NOTICE OF PUBLIC HEARING BEFORE THE BOARD OF SUPERVISORS OF THE COUNTY OF RIVERSIDE**

NOTICE IS HEREBY GIVEN that a public hearing at which all interested persons will be heard, will be held before the Board of Supervisors of Riverside County, California, on the 1<sup>st</sup> Floor, County Administrative Center, Board of Supervisors Chambers, 4080 Lemon Street, Riverside, on **Tuesday, May 4, 2010 at 9:30 a.m.** to consider the following:

**RESOLUTION NO. 2010-075**

RESOLUTION OF THE BOARD OF SUPERVISORS OF THE COUNTY OF RIVERSIDE DECLARING ITS INTENT TO ORDER THE ANNEXATION OF ZONE 150 TO LANDSCAPING AND LIGHTING MAINTENANCE DISTRICT NO. 89-1-CONSOLIDATED OF THE COUNTY OF RIVERSIDE PURSUANT TO THE LANDSCAPING AND LIGHTING ACT OF 1972 FOR THE MAINTENANCE AND SERVICING OF TRAFFIC SIGNALS; ADOPTING THE PRELIMINARY ENGINEER'S REPORT; GIVING NOTICE OF AND SETTING THE TIME AND PLACE OF THE PUBLIC HEARING ON THE ANNEXATION OF ZONE 150; ORDERING AN ASSESSMENT PROCEEDING; ORDERING A MAILED BALLOT ELECTION; AND DIRECTING NOTICE OF THE PUBLIC HEARING AND THE ASSESSMENT BALLOT TO BE MAILED PURSUANT TO ARTICLE XIID OF THE CALIFORNIA CONSTITUTION AND SECTION 4000 OF THE ELECTIONS CODE

**WHEREAS**, the Board of Supervisors (hereinafter the "Board of Supervisors") of the County of Riverside (hereinafter the "County") has adopted Resolution No. 2010-074 on March 16, 2010 initiating proceedings for the annexation of Zone 150 (hereinafter "Zone 150"), as described and shown in Exhibit "A", which is attached hereto and incorporated herein, to Landscaping and Lighting Maintenance District No. 89-1-Consolidated of the County of Riverside, State of California, (hereinafter "L&LMD No. 89-1-C") pursuant to the Landscaping and Lighting Act of 1972 (hereinafter the "Act"), which is Part 2 (commencing with Section 22500) of Division 15 of the Streets and Highways Code (hereinafter the "Street and Highways Code"), and ordering the preparation of a report (hereinafter the "Report") regarding the proposed annexation of Zone 150 and the assessments to be levied within Zone 150 each fiscal year beginning fiscal year 2010-11 for the the maintenance and servicing of, and the provision of electricity for, traffic signals within the public right-of-way within said Zone; and

**WHEREAS**, such proceedings shall comply with the requirements of Article XIID of the California Constitution (hereinafter "Article XIID:"), the Act, and Section 4000 of the Elections Code requiring voter approval of the proposed assessment to be levied by L&LMD No. 89-1-C for Zone 150; and

**WHEREAS**, the Board of Supervisors by Resolution No. 2010-074 directed the Director of the Transportation Department, or his designee (hereinafter the "Engineer"), to prepare and file the Report with the Clerk of the Board of Supervisors in accordance with Sections 22608 and 22585 et. seq. of the Street and Highways Code and Section 4 of Article XIID; and

**WHEREAS**, said Engineer has filed the Report with the Clerk of the Board of Supervisors and the Report has been presented to and considered by the Board of Supervisors; and

**WHEREAS**, it is necessary that the Board of Supervisors adopt a resolution of intention pursuant to Section 22624 of the Streets and Highways Code, which fixes and gives notice, pursuant to Section 22626 of the Streets and Highways Code, of the time and place of a public hearing on said Report, the annexation of Zone 150, and the assessments to be levied on parcels within Zone 150 beginning in fiscal year 2010-11;

**NOW, THEREFORE, BE IT RESOLVED, FOUND, DETERMINED AND ORDERED** by the Board of Supervisors in regular session assembled on March 16, 2010 as follows:

**Section 1. Findings.** The Board of Supervisors, after reviewing the Report, finds that:

(a) The foregoing recitals are true and correct;



(b) The Report contains all matters required by Sections 22565 through 22574 of the Streets and Highways Code and Section 4 of Article XIID and may, therefore, be approved by the Board of Supervisors;

(c) The annual assessment for fiscal year 2010-11 on all parcels within Zone 150 proposed to be annexed to L&LMD No. 89-1-C will be \$415.82 per acre.

**Section 2. Intent.** The Board of Supervisors hereby declares its intention to order the annexation of Zone 150, as described and shown in Exhibit "A", to L&LMD No. 89-1-C, and to levy and collect an annual assessment on all assessable lots and parcels of property within Zone 150 commencing with the fiscal year 2010-11 as set forth in the Report. The Report expressly states that there are no parcels or lots within Zone 150 that are owned by a federal, state or other local governmental agency that will benefit from the services to be financed by the annual assessments. The annual assessments will be collected at the same time and in the same manner as property taxes are collected, and all laws providing for the collection and enforcement of property taxes shall apply to the collection and enforcement of said assessments.

**Section 3. Boundaries.** All the property within boundaries of Zone 150 is proposed to be annexed into L&LMD No. 89-1-C and shall include that property in the unincorporated area of the County as described and shown in Exhibit "A".

**Section 4. Description of Services to be Provided.** The maintenance and servicing of, and the provision of electricity for, traffic signals authorized for Zone 150 of L&LMD No. 89-1-C are:

(a) Providing electricity to and the maintenance and servicing of traffic signals within the public right-of-way including incidental costs and expenses.

**Section 5. Amount to be Levied.** The assessment to be levied upon each parcel that benefits from the annexation of Zone 150 of L&LMD No. 89-1-C will be \$415.82 per acre for fiscal year 2010-11. As stated in the Report, the total budget for Zone 150 for the fiscal year 2010-11 is \$578; there is 1 parcel that are to be assessed that aggregate to 1.39 acres. The annual assessment will be increased by the greater of two percent (2.0%) or the cumulative percentage increase, if any, in the Consumer Price Index for all Urban Consumers for "electricity" ("CPI-U") for the Los Angeles-Riverside-Orange County California Standard Metropolitan Statistical area ("Index") published by the Bureau of Labor Statistics of the United States Department of Labor. The annual CPI-U adjustment will be based on the cumulative increase, if any, in the Index as it stands on March of each year over the base Index for March of 2010. Any increase larger than the greater of 2.0% or the CPI-U annual adjustment requires a majority approval of all the property owners within Zone 150. The Board of Supervisors will levy the assessment in each subsequent fiscal year until the Board of Supervisors undertakes proceedings for the dissolution of Zone 150 of L&LMD No. 89-1-C. The annual assessment will fund the services described in Section 4 of this Resolution. For further particulars, reference is to be made to the Report on file in the Office of the Clerk of the Board of Supervisors.

**Section 6. The Property to be Annexed.** The property to be annexed into L&LMD No. 89-1-C is Zone 150. The boundaries of Zone 150 are located within the unincorporated area of the County and are described and shown in the Report and Exhibit "A".

**Section 7. Report.** The Report, which is on file with the Clerk of the Board of Supervisors and which has been presented to the Board of Supervisors, is hereby approved. Reference is made to the Report for a full and detailed description of the services, the boundaries of Zone 150, and the annual assessment to be levied upon assessable lots and parcels within Zone 150 proposed to be annexed to L&LMD No. 89-1-C.

**Section 8. Public Hearing.** The question of whether Zone 150 shall be annexed into L&LMD No. 89-1-C and an annual assessment levied beginning with fiscal year 2010-11 shall be considered at a public hearing (hereinafter the "Public Hearing") to be held on May 4, 2010, at 9:30 a.m. at the meeting room of the Board of Supervisors of the County at 4080 Lemon Street, 1<sup>st</sup> Floor, Riverside, California.

**Section 9. Majority Protest.** Each owner of record of property within Zone 150 is to receive by mail an assessment ballot that shall conform to the requirements of Section 4 of Article XIID and Section 4000 of the California Elections Code. The assessment ballots are to be returned prior to the Public Hearing. L&LMD No. 89-1-C shall not impose assessments on property within the boundaries of

Zone 150 if there is a majority protest with regard to the annexation of Zone 150. A majority protest exists if, upon the conclusion of the Public Hearing, the tabulation of the assessment ballots submitted in opposition to the annexation and assessment of Zone 150 exceeds the assessment ballots in favor of the annexation and assessment of Zone 150.

**Section 10. Information.** Any property owner desiring additional information regarding Zone 150 of L&LMD No. 89-1-C, the Report, or the proposed assessment is to contact Ms. Joan Pickering, Engineering Technician II, Transportation Department of the County of Riverside, 4080 Lemon Street, 8th Floor, Riverside, California, 92501 or by telephone at (951) 955-6748.

**Section 11. Notice of the Public Hearing.** Notice of Public Hearing with regard to the annexation of Zone 150 to L&LMD No. 89-1-C shall be given consistent with Section 22626 of the Streets and Highways Code and Section 4 of Article XIID. The Clerk of the Board of Supervisors shall give notice of the Public Hearing by causing a certified copy of this Resolution to be published once in an appropriate newspaper at least ten (10) days prior to the date of the Public Hearing that is May 4, 2010. Publication of this Resolution is to be effected by the Clerk of the Board of Supervisors. Notice shall also be given by mailing first-class, postage prepaid, those notices, as prepared by County Counsel, assessment ballot and information sheets as required by Section 4 of Article XIID and Section 4000 of the California Elections Code to all owners of record of property within Zone 150 as shown on the last equalized assessment roll of the County. Mailing is to be made by the Engineer and deposited with the U. S. Post Office at least forty-five (45) days prior to the Public Hearing on May 4, 2010.

**Section 12. Effective Date.** This Resolution shall take effect from and after its date of adoption.

#### **EXHIBIT "A"** **DESCRIPTION OF BOUNDARIES**

The boundaries of Zone 150 to be annexed into Landscaping and Lighting Maintenance District No. 89-1-Consolidated, of the County of Riverside are coterminous with the boundaries of APN 963-070-013 as shown on Assessment Roll in the County of Riverside, State of California in Fiscal Year 2010-11.

**(INSERT ASSESSMENT DIAGRAM here)**

**ROLL CALL:**

**AYES:** Buster, Stone, Benoit, and Ashley

**NAYS:** None

**ABSENT:** Tavaglione

The foregoing is certified to be a true copy of a resolution duly adopted by said Board of Supervisors on the date therein set forth.

Kecia Harper-Ihem, Clerk of said Board

By: Cecilia Gil, Board Assistant

Any person affected by the above matter(s) may submit written comments to the Clerk of the Board before the public hearing or may appear and be heard in support of or opposition to the project at the time of the hearing. If you challenge the above item(s) in court, you may be limited to raising only those issues you or someone else raised at the public hearing described in this notice, or in written correspondence, to the Board of Supervisors at, or prior to, the public hearing.

Please send all written correspondence to: Clerk of the Board, 4080 Lemon Street, 1st Floor, Post Office Box 1147, Riverside, CA 92502-1147

Dated: April 15, 2010

Kecia Harper-Ihem, Clerk of the Board

By: Cecilia Gil, Board Assistant

# ZONE 150

PORTION OF SECTION 6, T.7S., R.2W.

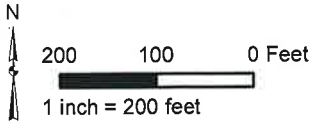
PLOT PLAN NO. 23975

1 PARCEL

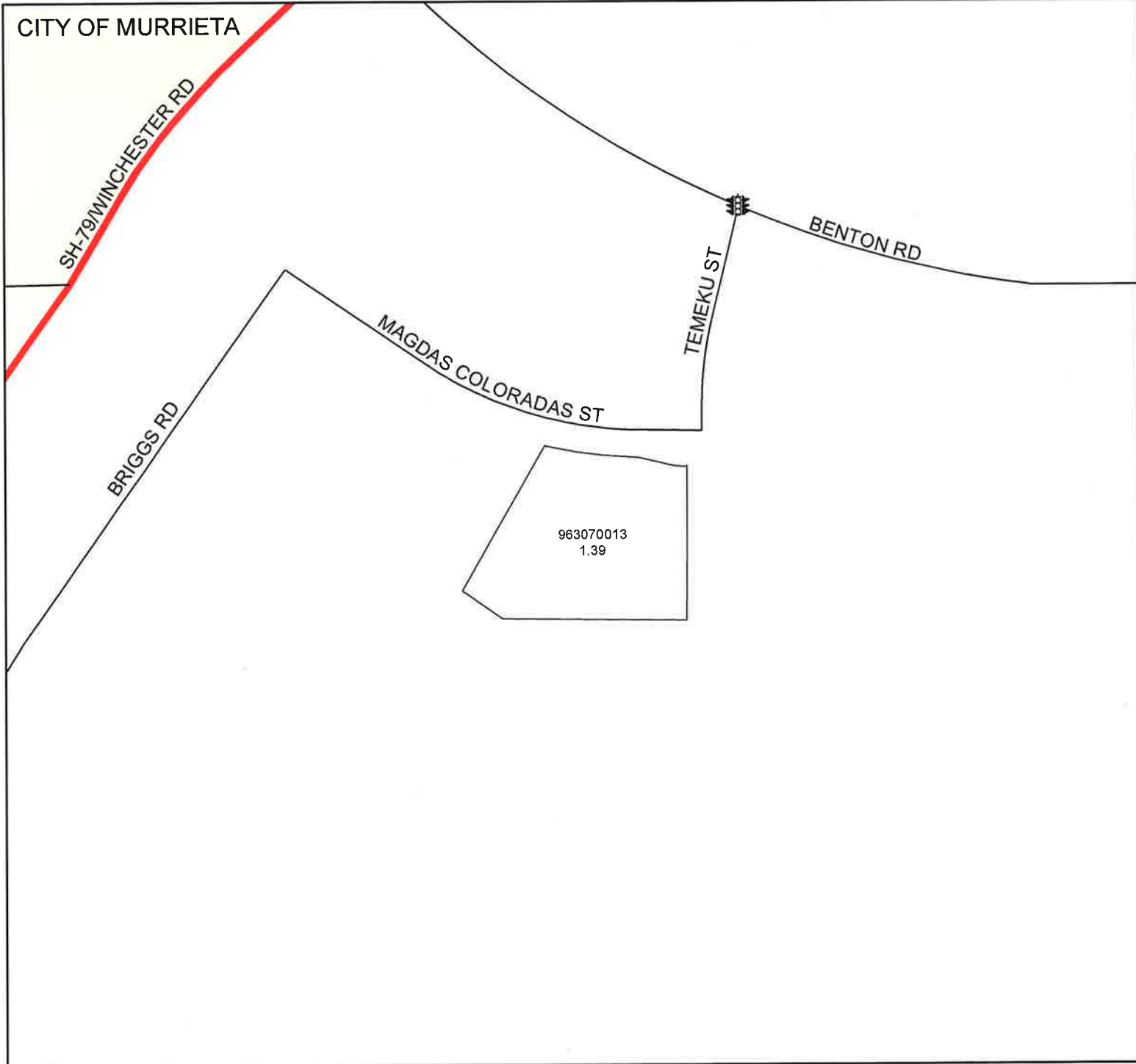


The County of Riverside assumes no warranty or legal responsibility for the information contained on this map. Data and information represented on this map is subject to updates, modifications and may not be complete or appropriate for all purposes. County GIS and other sources should be queried for the most current information. Do not copy or reuse this map.

Printed by jpickeri on 2/3/10



## ASSESSMENT DIAGRAM



DENOTES MAINTAINED TRAFFIC SIGNAL

⑨ REMITTANCE ADDRESS  
 POST OFFICE BOX 12009  
 RIVERSIDE, CA 92502-2209  
 FAX (951) 368-9026

① BILLING PERIOD 04/18/10 - 04/19/10  
 ⑤ BILLING DATE 04/19/10  
 ⑩ ADVERTISING/CLIENT NAME BOARD OF SUPERVISORS  
 FOR BILLING INFORMATION CALL (951) 368-9713  
 ⑪ PAGE NO 1  
 ⑫ TOTAL AMOUNT DUE 832.00  
 ⑬ UNAPPLIED AMOUNT 0  
 ⑭ TERMS OF PAYMENT Due Upon Receipt

⑥ BILLED ACCOUNT NAME AND ADDRESS  
 BOARD OF SUPERVISORS  
 COUNTY OF RIVERSIDE  
 P.O. BOX 1147  
 RIVERSIDE CA 92502

⑦ BILLED ACCOUNT NUMBER 045202  
 ⑧ REP NO LE04

Statement #: 56535104 Amount Paid \$ \_\_\_\_\_ Your Check # \_\_\_\_\_

**PLEASE DETACH AND RETURN UPPER PORTION WITH YOUR REMITTANCE**


⑬ DATE	⑪ REFERENCE	⑫ ⑬ DESCRIPTION-OTHER COMMENTS/CHARGES	⑭ SAU SIZE ⑮ BILLED UNITS	⑯ RATE	⑰ GROSS AMOUNT	⑱ NET AMOUNT
04/18	4177940 CO	RESOLUTION NO. 2010-075 ZONE 1 Class : 10 Ctext Ad#.10234097 Placed By : Cecilia Gil	640 L	1.30		832.00

RECEIVED RIVERSIDE COUNTY  
 CLERK / BOARD OF SUPERVISORS  
 2010 APR 22 PM 3:32

*Transpl.  
 3.59 of 03/16/10  
 1 hr*

COMING SOON! Electronic Tearsheet Delivery Service  
 It's easy! Search, view, save, email notification & more

⑲ CURRENT NET AMOUNT DUE	⑳ 30 DAYS	㉑ 60 DAYS	㉒ OVER 90 DAYS	㉓ UNAPPLIED AMOUNT	㉔ PLEASE PAY THIS AMOUNT
					832.00

THE PRESS-ENTERPRISE  P.O. BOX 12009  
 RIVERSIDE, CA 92502-2209  
 TELEPHONE (951) 368-9711  
 (951) 368-9720 (951) 368-9713

**ADVERTISING STATEMENT/INVOICE**

 UNAPPLIED AMOUNTS ARE INCLUDED IN TOTAL AMOUNT DUE

⑳ STATEMENT NUMBER	㉕ BILLING PERIOD	㉖ BILLED ACCOUNT NUMBER	㉗ ADVERTISER/CLIENT NUMBER	㉘ ADVERTISER/CLIENT NAME
56535104	04/18/10 - 04/19/10	045202		BOARD OF SUPERVISORS

5/11/10 9.2

# THE PRESS-ENTERPRISE

3450 Fourteenth Street  
Riverside CA 92501-3878  
951-684-1200  
951-368-9018 FAX

**PROOF OF PUBLICATION  
(2010, 2015.5 C.C.P.)**

Press-Enterprise

PROOF OF PUBLICATION OF

Ad Desc.: Resolution No. 2010-075 Zone 150

I am a citizen of the United States. I am over the age of eighteen years and not a party to or interested in the above entitled matter. I am an authorized representative of THE PRESS-ENTERPRISE, a newspaper of general circulation, printed and published daily in the County of Riverside, and which newspaper has been adjudicated a newspaper of general circulation by the Superior Court of the County of Riverside, State of California, under date of April 25, 1952, Case Number 54446, under date of March 29, 1957, Case Number 65673 and under date of August 25, 1995, Case Number 267864; that the notice, of which the annexed is a printed copy, has been published in said newspaper in accordance with the instructions of the person(s) requesting publication, and not in any supplement thereof on the following dates, to wit:

04-18-10

I Certify (or declare) under penalty of perjury that the foregoing is true and correct.

Date: Apr. 18, 2010  
At: Riverside, California

BOARD OF SUPERVISORS  
P.O. BOX 1147  
COUNTY OF RIVERSIDE  
RIVERSIDE CA 92502

Ad #: 10234097

PO #:

Agency #: \_\_\_\_\_

Ad Copy:

## NOTICE OF PUBLIC HEARING BEFORE THE BOARD OF SUPERVISORS OF THE COUNTY OF RIVERSIDE

NOTICE IS HEREBY GIVEN that a public hearing at which all interested persons will be heard, will be held before the Board of Supervisors of Riverside County, California, on the 1st Floor, County Administrative Center, Board of Supervisors Chambers, 4080 Lemon Street, Riverside, on **Tuesday, May 4, 2010 at 9:30 a.m.** to consider the following:

### RESOLUTION NO. 2010-075

RESOLUTION OF THE BOARD OF SUPERVISORS OF THE COUNTY OF RIVERSIDE DECLARING ITS INTENT TO ORDER THE ANNEXATION OF ZONE 150 TO LANDSCAPING AND LIGHTING MAINTENANCE DISTRICT NO. 89-1-CONSOLIDATED OF THE COUNTY OF RIVERSIDE PURSUANT TO THE LANDSCAPING AND LIGHTING ACT OF 1972 FOR THE MAINTENANCE AND SERVICING OF TRAFFIC SIGNALS; ADOPTING THE PRELIMINARY ENGINEER'S REPORT; GIVING NOTICE OF AND SETTING THE TIME AND PLACE OF THE PUBLIC HEARING ON THE ANNEXATION OF ZONE 150; ORDERING AN ASSESSMENT PROCEEDING; ORDERING A MAILED BALLOT ELECTION; AND DIRECTING NOTICE OF THE PUBLIC HEARING AND THE ASSESSMENT BALLOT TO BE MAILED PURSUANT TO ARTICLE XIII D OF THE CALIFORNIA CONSTITUTION AND SECTION 4000 OF THE ELECTIONS CODE

**WHEREAS**, the Board of Supervisors (hereinafter the "Board of Supervisors") of the County of Riverside (hereinafter the "County") has adopted Resolution No. 2010-074 on March 16, 2010 initiating proceedings for the annexation of Zone 150 (hereinafter "Zone 150"), as described and shown in Exhibit "A", which is attached hereto and incorporated herein, to Landscaping and Lighting Maintenance District No. 89-1-Consolidated of the County of Riverside, State of California, (hereinafter "L&LMD No. 89-1-C") pursuant to the Landscaping and Lighting Act of 1972 (hereinafter the "Act"), which is Part 2 (commencing with Section 22500) of Division 15 of the Streets and Highways Code (hereinafter the "Street and Highways Code"), and ordering the preparation of a report (hereinafter the "Report") regarding the proposed annexation of Zone 150 and the assessments to be levied within Zone 150 each fiscal year beginning fiscal year 2010-11 for the the maintenance and servicing of, and the provision of electricity for, traffic signals within the public right-of-way within said Zone; and

**WHEREAS**, such proceedings shall comply with the requirements of Article XIII D of the California Constitution (hereinafter "Article XIII D"), the Act, and Section 4000 of the Elections Code requiring voter approval of the proposed assessment to be levied by L&LMD No. 89-1-C for Zone 150; and

**WHEREAS**, the Board of Supervisors by Resolution No. 2010-074 directed the Director of the Transportation Department, or his designee (hereinafter the "Engineer"), to prepare and file the Report with the Clerk of the Board of Supervisors in accordance with Sections 22608 and 22585 et. seq. of the Street and Highways Code and Section 4 of Article XIII D; and

**WHEREAS**, said Engineer has filed the Report with the Clerk of the Board of Supervisors and the Report has been presented to and considered by the Board of Supervisors; and

**WHEREAS**, it is necessary that the Board of Supervisors adopt a resolution of intention pursuant to Section 22624 of the Streets and Highways Code, which fixes and gives notice, pursuant to Section 22626 of the Streets and Highways Code, of the time and place of a public hearing on said Report, the annexation of Zone 150, and the assessments to be levied on parcels within Zone 150 beginning in fiscal year 2010-11;

**NOW, THEREFORE, BE IT RESOLVED, FOUND, DETERMINED AND ORDERED** by the Board of Supervisors in regular session assembled on March 16, 2010 as follows:

**Section 1. Findings.** The Board of Supervisors, after reviewing the Report, finds that:

(a) The foregoing recitals are true and correct;  
(b) The Report contains all matters required by Sections 22565 through 22574 of the Streets and Highways Code and Section 4 of Article XIII D and may, therefore, be approved by the Board of Supervisors;

(c) The annual assessment for fiscal year 2010-11 on all parcels within Zone 150 proposed to be annexed to L&LMD No. 89-1-C will be \$415.82 per acre.

**Section 2. Intent.** The Board of Supervisors hereby declares its intention to order the annexation of Zone 150, as described and shown in Exhibit "A", to L&LMD No. 89-1-C, and to levy and collect an annual assessment on all assessable lots and parcels of property within Zone 150 commencing with the fiscal year 2010-11 as set forth in the Report. The Report expressly states that there are no parcels or lots within Zone 150 that are owned by a federal, state or other local governmental agency that will benefit from the services to be financed by the annual assessments. The annual assessments will be collected at the same time and in the same manner as property taxes are collected, and all laws providing for the collection and enforcement of property taxes shall apply to the collection and enforcement of said assessments.

**Section 3. Boundaries.** All the property within boundaries of Zone 150 is proposed to be annexed into L&LMD No. 89-1-C and shall include that property in the unincorporated area of the County as described and shown in Exhibit "A".

**Section 4. Description of Services to be Provided.** The maintenance and servicing of, and the provision of electricity for, traffic signals authorized for Zone 150 of L&LMD No. 89-1-C are:

(a) Providing electricity to and the maintenance and servicing of traffic signals within the public right-of-way including incidental costs and expenses.

**Section 5. Amount to be Levied.** The assessment to be levied upon each parcel that benefits from the annexation of Zone 150 of L&LMD No. 89-1-C will be \$415.82 per acre for fiscal year 2010-11. As stated in the Report, the total budget for Zone 150 for the fiscal year 2010-11 is \$578; there is 1 parcel that are to be assessed that aggregate to 1.39 acres. The annual assessment will be increased by the greater of two percent (2.0%) or the cumulative percentage increase, if any, in the Consumer Price Index for all Urban Consumers for "electricity" ("CPI-U") for the Los Angeles-Riverside-Orange County California Standard Metropolitan Statistical area ("Index") published by the Bureau of Labor Statistics of the United States Department of Labor. The annual CPI-U adjustment will be based on the cumulative increase, if any, in the Index as it stands on March of each year over the base Index for March of 2010. Any increase larger than the greater of 2.0% or the CPI-U annual adjustment requires a majority approval of all the property owners within Zone 150. The Board of Supervisors will levy the assessment in each subsequent fiscal year until the Board of Supervisors undertakes proceedings for the dissolution of Zone 150 of L&LMD No. 89-1-C. The annual assessment will fund the services described in Section 4 of this Resolution. For further particulars, reference is to be made to the Report on file in the Office of the Clerk of the Board of Supervisors.

**Section 6. The Property to be Annexed.** The property to be annexed into L&LMD No. 89-1-C is Zone 150. The boundaries of Zone 150 are located within the unincorporated area of the County and are described and shown in the Report and Exhibit 'A'.

**Section 7. Report.** The Report, which is on file with the Clerk of the Board of Supervisors and which has been presented to the Board of Supervisors, is hereby approved. Reference is made to the Report for a full and detailed description of the services, the boundaries of Zone 150, and the annual assessment to be levied upon assessable lots and parcels within Zone 150 proposed to be annexed to L&LMD No. 89-1-C.

**Section 8. Public Hearing.** The question of whether Zone 150 shall be annexed into L&LMD No. 89-1-C and an annual assessment levied beginning with fiscal year 2010-11 shall be considered at a public hearing (hereinafter the "Public Hearing") to be held on May 4, 2010, at 9:30 a.m. at the meeting room of the Board of Supervisors of the County at 4080 Lemon Street, 1st Floor, Riverside, California.

**Section 9. Majority Protest.** Each owner of record of property within Zone 150 is to receive by mail an assessment ballot that shall conform to the requirements of Section 4 of Article XIII D and Section 4000 of the California Elections Code. The assessment ballots are to be returned prior to the Public Hearing. L&LMD No. 89-1-C shall not impose assessments on property within the boundaries of Zone 150 if there is a majority protest with regard to the annexation of Zone 150. A majority protest exists if, upon the conclusion of the Public Hearing, the tabulation of the assessment ballots submitted in opposition to the annexation and assessment of Zone 150 exceeds the assessment ballots in favor of the annexation and assessment of Zone 150.

**Section 10. Information.** Any property owner desiring additional information regarding Zone 150 of L&LMD No. 89-1-C, the Report, or the proposed assessment is to contact Ms. Joan Pickering, Engineering Technician II, Transportation Department of the County of Riverside, 4080 Lemon Street, 8th Floor, Riverside, California, 92501 or by telephone of (951) 955-6748.

**Section 11. Notice of the Public Hearing.** Notice of Public Hearing with regard to the annexation of Zone 150 to L&LMD No. 89-1-C shall be given consistent with Section 22626 of the Streets and Highways Code and Section 4 of Article XIII D. The Clerk of the Board of Supervisors shall give notice of the Public Hearing by causing a certified copy of this Resolution to be published once in an appropriate newspaper at least ten (10) days prior to the date of the Public Hearing that is May 4, 2010. Publication of this Resolution is to be effected by the Clerk of the Board of Supervisors. Notice shall also be given by mailing first-class, postage pre-paid, those notices, as prepared by County Counsel, assessment ballot and information sheets as required by Section 4 of Article XIII D and Section 4000 of the California Elections Code to all owners of record of property within Zone 150 as shown on the last equalized assessment roll of the County. Mailing is to be made by the Engineer and deposited with the U. S. Post Office at least forty-five (45) days prior to the Public Hearing on May 4, 2010.

**Section 12. Effective Date.** This Resolution shall take effect from and after its date of adoption.

#### EXHIBIT "A"

#### DESCRIPTION OF BOUNDARIES

The boundaries of Zone 150 to be annexed into Landscaping and Lighting Maintenance District No. 89-1 Consolidated, of the County of Riverside are coterminous with the boundaries of APN 963-070-013 as shown on Assessment Roll in the County of Riverside, State of California in Fiscal Year 2010-11.



ROLL CALL:  
AYES: Buster, Stone, Benoit, and Ashley  
NAYS: None  
ABSENT: ~~Tavaglione~~

The foregoing is certified to be a true copy of a resolution duly adopted by said Board of Supervisors on the date therein set forth.

Kecia Harper-Ihem, Clerk of said Board  
By: Cecilia Gil, Board Assistant

Any person affected by the above matter(s) may submit written comments to the Clerk of the Board before the public hearing or may appear and be heard in support of or opposition to the project at the time of the hearing. If you challenge the above item(s) in court, you may be limited to raising only those issues you or someone else raised at the public hearing described in this notice, or in written correspondence, to the Board of Supervisors at, or prior to, the public hearing.

Please send all written correspondence to: Clerk of the Board, 4080 Lemon Street, 1st Floor, Post Office Box 1147, Riverside, CA 92502-1147

Dated: April 15, 2010

Kecia Harper-Ihem, Clerk of the Board  
By: Cecilia Gil, Board Assistant

4/18