

SUBMITTAL TO THE BOARD OF SUPERVISORS
COUNTY OF RIVERSIDE, STATE OF CALIFORNIA

227B



FROM: TLMA - Transportation Department

SUBMITTAL DATE:
September 22, 2010

SUBJECT: Approval of **PARCEL MAP 36283**
A Schedule "E" Subdivision in the Eastvale Area

RECOMMENDED MOTION: That the Board approve the final map and authorize the Chairman to sign the map for Parcel Map 36283.

BACKGROUND: This map complies in all respects with the provisions of Division 3 of Title 15 of the Government Code and applicable local ordinances.

REVIEWED BY EXECUTIVE OFFICE

DATE 9/23/10
Final Grande Concurrence

Juan C. Perez
Director of Transportation
Patricia Romo
Deputy Director of Transportation

HS:lf
Submittals: Final Map

MINUTES OF THE BOARD OF SUPERVISORS

On motion of Supervisor Ashley, seconded by Supervisor Stone and duly carried, IT WAS ORDERED that the above matter is approved as recommended.

Ayes: Buster, Stone, Benoit and Ashley
Nays: None
Absent: Tavaglione
Date: September 28, 2010
xc: Transp., COB

Kecia Harper-Ihem
Clerk of the Board
By: [Signature]
Deputy

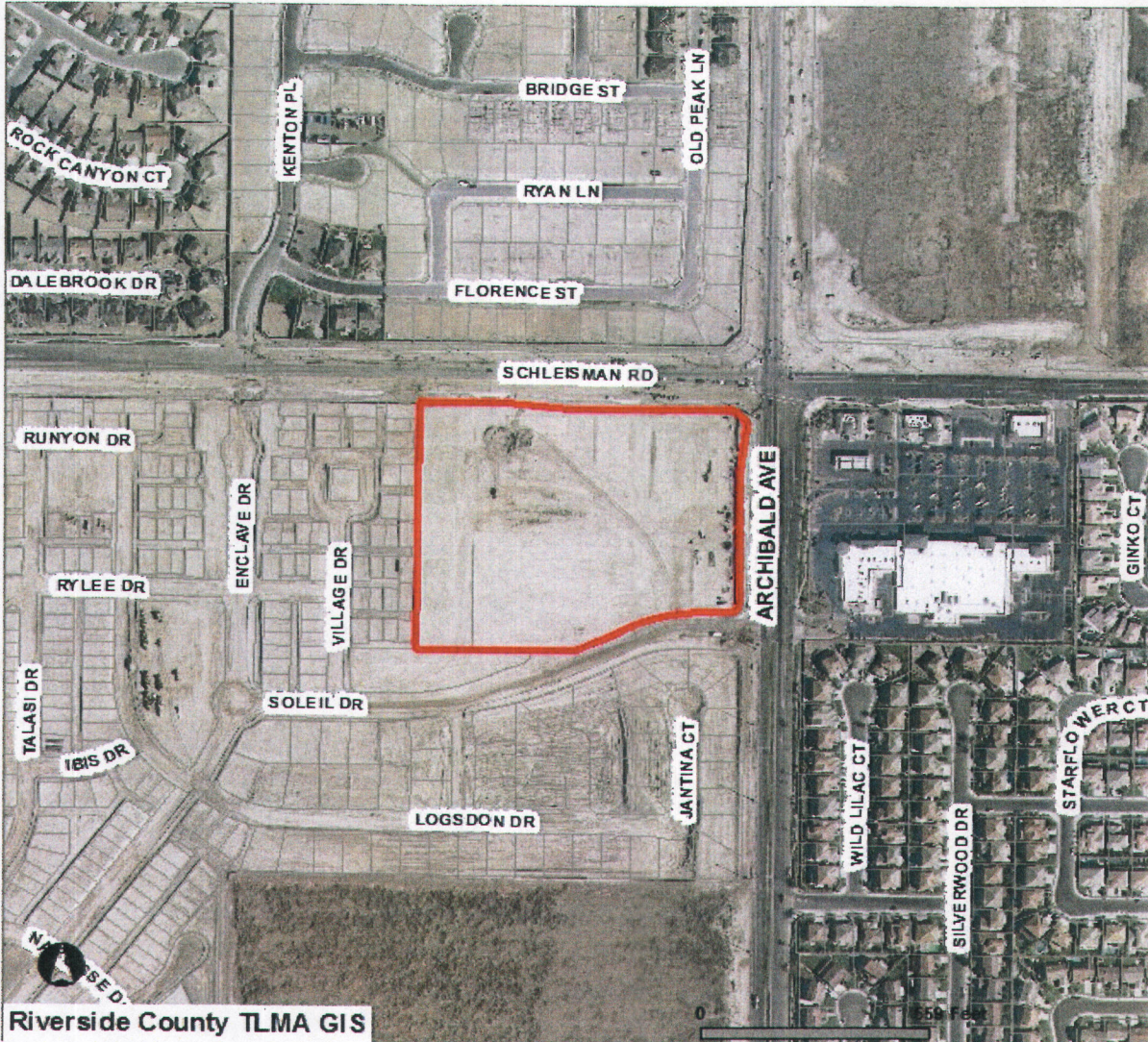
Dept Recomm.: Policy
Per Exec. Ofc.: Policy
 Consent
 Consent

Prev. Agn. Ref.

District: 2

Agenda Number:

2.12



VICINITY MAP

PM-36283

SEC. 34 TWP. 2S RNG. 7W

Supervisory District: 2 (John Tavaglione)