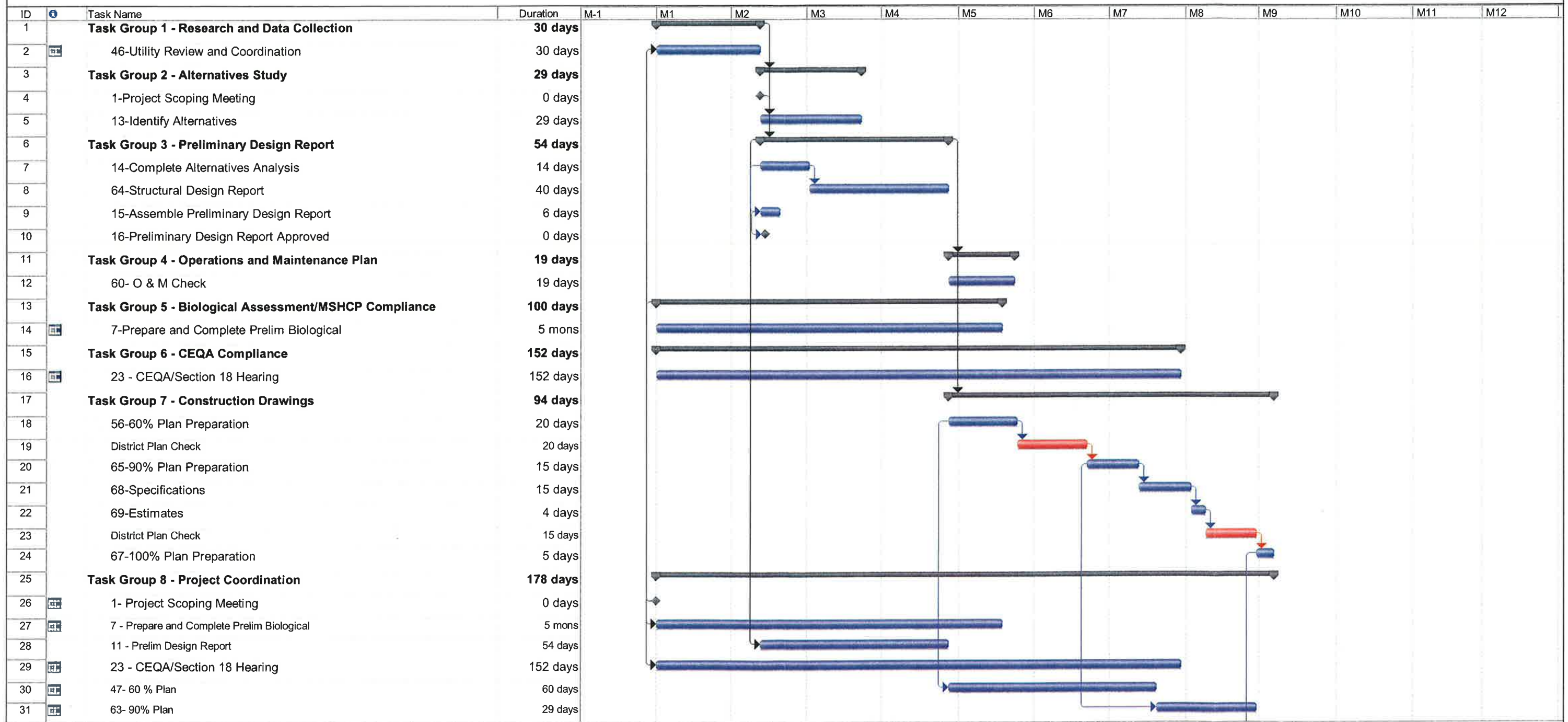


# Attachment "C"

## RIVERSIDE COUNTY FLOOD CONTROL & WATER CONSERVATION DISTRICT SARI LINE PROTECTION ALONG THE SANTA ANA RIVER



Date: Fri 7/30/10 1

Task		Milestone		Rolled Up Task		Rolled Up Progress		External Tasks		Group By Summary	
Progress		Summary		Rolled Up Milestone		Split		Project Summary		Deadline	

**RIVERSIDE COUNTY FLOOD CONTROL & WATER CONSERVATION DISTRICT  
SARI LINE PROTECTION ALONG THE SANTA ANA RIVER**

ID	Task Name	Duration	M-1	M1	M2	M3	M4	M5	M6	M7	M8	M9	M10	M11	M12
32	67-100% Plan	5 days													


Date: Fri 7/30/10      2


Task       Milestone       Rolled Up Task       Rolled Up Progress       External Tasks       Group By Summary   
 Progress       Summary       Rolled Up Milestone       Split       Project Summary       Deadline 

1 IN WITNESS WHEREOF, the parties hereto have executed this Agreement on

2 OCT 05 2010

3 (to be filled in by Clerk of the Board)

4 By   
5 WARREN D. WILLIAMS  
6 General Manager-Chief Engineer

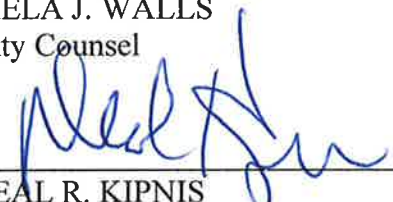
By   
MARION ASHLEY, Chairman  
Riverside County Flood Control and Water  
Conservation District Board of Supervisors

7 APPROVED AS TO FORM:

ATTEST:

8 PAMELA J. WALLS  
9 County Counsel

KECIA HARPER-IHEM  
Clerk of the Board

10 By   
11 NEAL R. KIPNIS  
12 Deputy County Counsel

By   
Deputy

(SEAL)

13  
14  
15  
16  
17  
18  
19  
20  
21  
22  
23  
24  
25  
26 Santa Ana River Below Prado  
27 Santa Ana River Interceptor Line Protection  
28 8/26/10  
TT:blj

ALBERT A. WEBB ASSOCIATES

By   
SCOTT R. HILDERBRANDT  
Vice President

- 1
- 2
- 3
- 4
- 5
- 6
- 7
- 8
- 9
- 10
- 11
- 12
- 13
- 14
- 15
- 16
- 17
- 18
- 19
- 20
- 21
- 22
- 23
- 24
- 25
- 26
- 27
- 28

Santa Ana River Below Prado  
Santa Ana River Interceptor Line Protection  
8/26/10  
TT:blj