

**SUBMITTAL TO THE BOARD OF SUPERVISORS
COUNTY OF RIVERSIDE, STATE OF CALIFORNIA**

303
A



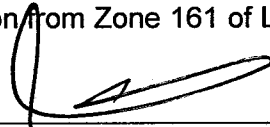
FROM: TLMA - Transportation Dept.

SUBMITTAL DATE:
June 29, 2011

SUBJECT: Landscaping and Lighting Maintenance District No. 89-1-Consolidated,
Annexation of Zone 161 (Glen Valley).

RECOMMENDED MOTION: That the Board:

1. Adopt Resolution No. 2011-185, Resolution of the County of Riverside ordering the annexation, and confirming the diagram and assessment of Zone 161 of Landscaping and Lighting Maintenance District No. 89-1-Consolidated, and levying assessments on all assessable lots and parcels of land therein for fiscal year 2011-12.
2. Direct the Auditor-Controller's office to establish an interest-bearing sub-fund 20300 to receive deposits and interest thereon from Zone 161 of Landscaping and Lighting



Juan C. Perez
Director of Transportation

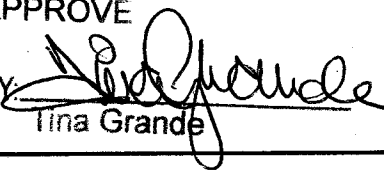
MH:jp

FORM APPROVED COUNTY COUNSEL
BY Dale A. Gardner DATE 6/29/11
DALE A. GARDNER
Departmental Concurrence

FINANCIAL DATA	Current F.Y. Total Cost:	\$0	In Current Year Budget:	N/A
	Current F.Y. Net County Cost:	\$0	Budget Adjustment:	N/A
	Annual Net County Cost:	\$0	For Fiscal Year:	2011-12

SOURCE OF FUNDS: Landscaping and Lighting Maintenance District No. 89-1-Consolidated – 100%	Positions To Be Deleted Per A-30	<input type="checkbox"/>
	Requires 4/5 Vote	<input type="checkbox"/>

C.E.O. RECOMMENDATION:

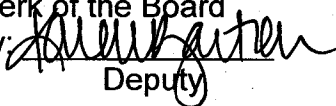
APPROVE
BY 
Tina Grande

County Executive Office Signature

MINUTES OF THE BOARD OF SUPERVISORS

On motion of Supervisor Ashley, seconded by Supervisor Stone and duly carried by unanimous vote, IT WAS ORDERED that the above matter is approved as recommended.

Ayes: Buster, Tavaglione, Stone, Benoit and Ashley
Nays: None
Absent: None
Date: July 12, 2011
xc: Transp., Auditor

Kecia Harper-Ihem
Clerk of the Board
By: 
Deputy

Prev. Agn. Ref. 04/12/11, 3.23 | **District:** 1 | **Agenda Number:**

3.45

The Honorable Board of Supervisors

RE: Landscaping and Lighting Maintenance District No. 89-1-Consolidated, Annexation of Zone 161 (Glen Valley).

June 29, 2011

Page 2 of 2

Maintenance District No. 89-1-Consolidated; in accordance with Section 22655-22656 of the Streets and Highways Code.

BACKGROUND: On June 7, 2011, a public hearing was held to receive all testimony regarding the annexation of Zone 161 to Landscaping and Lighting Maintenance District No. 89-1-Consolidated ("L&LMD No. 89-1-C"). After closing the public hearing, the Board directed the Director of Transportation, or his/her designee, to tally the assessment ballots that had been received prior to the close of the hearing. The assessment ballots were to be tabulated on June 8, 2011 at 10:00 a.m. in Conference Room C on the 8th Floor of the County Administrative Center. The tabulation shows that votes representing 8 parcels out of a possible 8 were cast, and that 8 votes (or 100%) were cast in favor of the annexation of Zone 161 to L&LMD No. 89-1-C and the levy and enrollment of the special assessment.

The proposed budget for fiscal year 2011-12 for Zone 161 (within public rights-of-way located northerly of Cajalco Rd and at the intersection of Cajalco Rd and Wood Rd) is \$5,460 that will result in an assessment for fiscal year 2011-12 within Zone 161 of \$364.22 per acre. Zone 161 includes 8 commercial parcels totaling 14.99 acres. For the fiscal year in which the future median improvements at Cajalco Rd are completed, the annual assessment may be increased by \$65.06 which will result in an aggregate assessment of \$429.28 per acre, adjusted for inflation. The annual assessment may be adjusted annually by the greater of 2% or the cumulative percentage increase in the CPI-U, if any, as it stands as of March of each year over the base index for March of 2011.

Adoption of Resolution No. 2011-185 confirms the assessment levy as indicated in the Engineer's Report for fiscal year 2011-12 for Zone 161 of L&LMD No. 89-1-C and orders the placement of the annual assessment on the County's Assessment Roll for fiscal year 2011-12.

RESOLUTION NO. 2011-185

RESOLUTION OF THE BOARD OF SUPERVISORS OF THE COUNTY OF RIVERSIDE ORDERING THE ANNEXATION OF ZONE 161 TO LANDSCAPING AND LIGHTING MAINTENANCE DISTRICT NO. 89-1-CONSOLIDATED OF THE COUNTY OF RIVERSIDE AND CONFIRMING THE DIAGRAM AND ASSESSMENT FOR ZONE 161 OF LANDSCAPING AND LIGHTING MAINTENANCE DISTRICT NO. 89-1-CONSOLIDATED AND LEVYING ASSESSMENTS ON ALL ASSESSABLE LOTS AND PARCELS OF LAND THEREIN FOR THE FISCAL YEAR 2011-12

WHEREAS, on April 12, 2011 the Board of Supervisors (hereinafter the "Board of Supervisors") of the County of Riverside (hereinafter the "County") adopted Resolution No. 2011-076, pursuant to Section 22608 and Section 22585 et seq. of the Streets and Highways Code, declaring the intention of the Board of Supervisors to order the annexation of Zone 161 to Landscaping and Lighting Maintenance District No. 89-1-Consolidated (hereinafter "L&LMD No. 89-1-C") of the County pursuant to the Landscaping and Lighting Act of 1972, being Part 2 (commencing with Section 22500) of Division 15 of the Streets and Highways Code, and giving notice of and setting a public hearing for 9:30 a.m. on June 7, 2011 at the meeting room of the Board of Supervisors and requiring that the notice of the public hearing and assessment ballots be mailed to all owners of property within Zone 161 as shown on the equalized tax roll; and

WHEREAS, notice of said public hearing was duly published and mailed as required by Resolution No. 2011-076, Section 22626 of the Streets and Highways Code and Sections 53753 and 54954.6 of the Government Code and the assessment ballots were timely mailed to all owners of property within said Zone 161 as shown on the equalized tax roll; and

WHEREAS, at 9:30 a.m. on June 7, 2011, as set forth in Resolution No. 2011-076, the Board of Supervisors held a public hearing and afforded all interested persons an opportunity to be heard, and considered all oral statements and all written protest or communications made or filed by any interested persons, closed the public hearing and directed the Director of Transportation, or his designee, as an impartial person having no vested interest in the annexation of Zone 161 to L&LMD

FOR APPROVAL BY BOARD OF SUPERVISORS
BY *July 4, 2011*
DATE

1 No. 89-1-C as required by Section 53753(e) of the Government Code to tally the assessment ballots
2 that had been received prior to the close of the public hearing; and

3 **WHEREAS**, the tally of the assessment ballots show that assessment ballots were timely
4 received from the owner of 8 parcels out of a possible 8 parcels and that 8 parcels (100 percent of the
5 assessment ballots received) voted in favor of annexation of Zone 161 to L&LMD No. 89-1-C and the
6 levy of an annual assessment in said Zone 161 beginning fiscal year 2011-12; and

7 **WHEREAS**, the Board of Supervisors may proceed, pursuant to Section 22631 of the Streets
8 and Highways Code, to adopt a resolution confirming the diagram and assessment, either as originally
9 proposed, or as changed by the Board of Supervisors, and the adoption of such a resolution shall
10 constitute the levy of an assessment on all assessable lots and parcels of land within Zone 161 of
11 L&LMD No. 89-1-C beginning fiscal year 2011-12.

12 **NOW, THEREFORE, BE IT RESOLVED, FOUND, DETERMINED AND ORDERED** by the
13 Board of Supervisors of the County in regular session on July 12, 2011 as follows:

14 **Section 1. Findings.** The Board of Supervisors finds:

- 15 (a) the proceeding recitals are correct;
- 16 (b) compliance has been had with all the requirements of the Landscaping and
17 Lighting Act of 1972, being Part 2 (commencing with Section 22500) of Division
18 15 of the Streets and Highways Code, and Sections 53753 and 54954.6 of the
19 Government Code;
- 20 (c) a majority protest to the annexation of and annual assessment of Zone 161 of
21 L&LMD No. 89-1-C has not been filed;
- 22 (d) the tally of the assessment ballots timely received was 100 percent voted in
23 favor of the annexation of Zone 161 to L&LMD No. 89-1-C and the levy of an
24 annual assessment beginning fiscal year 2011-12, and 0 percent voted no;
- 25 (e) the Board of Supervisors may proceed to adopt a resolution ordering the
26 annexation of Zone 161 to L&LMD No. 89-1-C;

- 1 (f) the Board of Supervisors may proceed to adopt a resolution confirming the
2 diagram and assessment for Zone 161 of L&LMD No. 89-1-C either as originally
3 proposed or as changed by it; and
- 4 (g) the assessments to be levied on the assessable lots and parcels of land within
5 Zone 161 of L&LMD No. 89-1-C for the maintenance and servicing of
6 landscaping, traffic signal, and future median landscaping improvements, and
7 the provision of electricity for traffic signals in said Zone 161 during the fiscal
8 year 2011-12 as contained in the report of the Director of Transportation which
9 is on file with the Clerk of the Board of Supervisors (hereinafter the "Report") are
10 based on benefits derived by such lots and parcels from the availability of such
11 landscaping, traffic signal, and future median improvements, and are not based
12 upon the ownership of such lots and parcels.

13 **Section 2. Annexation.** Zone 161, as proposed to be annexed to L&LMD No.
14 89-1-C, includes all the property subject to Parcel Map No. 36124 in the County of Riverside, State of
15 California as described in Exhibit "A" attached hereto, shall be and is annexed into L&LMD No. 89-1-C.

16 **Section 3. Improvements.** The improvements authorized for Zone 161 of L&LMD
17 No. 89-1-C are:

- 18 (a) The maintenance and servicing of landscaping within the public right-of-way
19 including the trimming, fertilizing, weeding and replanting of trees, shrubs, grass,
20 and other ornamental vegetation; and
- 21 (b) The maintenance and servicing of irrigation and electrical facilities associated
22 with the landscaping, including but not limited to electricity for operation of the
23 irrigation system and water for irrigation; and
- 24 (c) Providing electricity to, and the maintenance and servicing of, traffic signals
25 within the public right-of-way including incidental costs and expenses.
26

1 **Section 4. Confirmation of Report.** The Report and the assessment diagram and
2 the assessment of estimated costs for the maintenance and servicing of landscaping, traffic signal,
3 and future median landscaping improvements, and the provision of electricity for traffic signals in
4 Zone 161 of L&LMD No. 89-1-C for fiscal year 2011-12 as contained in the Report are confirmed.

5 **Section 5. Levy of Assessment.** Pursuant to Section 22631 of the Streets and Highways Code
6 the adoption of this resolution constitutes the levy of the assessment for the maintenance and
7 servicing of landscaping, traffic signal, and future median landscaping improvements, and the
8 provision of electricity for traffic signals in Zone 161 of L&LMD No. 89-1-C during fiscal year 2011-12,
9 as contained in the Report, and such assessment is levied. This assessment will increase in the fiscal
10 year in which the future median on Cajalco Rd is completed. The Clerk of the Board of Supervisors is
11 directed to file a certified copy of this resolution, together with the diagram and assessment contained
12 in the Report with the County Auditor-Controller of the County of Riverside, who, pursuant to Section
13 22645 of the Streets and Highways Code, shall enter on the County Tax Roll opposite each lot or
14 parcel of land the amount assessed thereupon, as shown in said assessment.

15 **Section 6. Effective Date.** This Resolution shall take effect from and after its date
16 of adoption.

17 ROLL CALL:

18 Ayes: Buster, Tavaglione, Stone, Benoit, and Ashley
19 Nays: None
20 Absent: None

21 The foregoing is certified to be a true copy of a resolution duly
22 adopted by said Board of Supervisors on the date therein set forth.

23 KECIA HARPER-IHEM, Clerk of said Board

24 By: _____
25 Deputy

EXHIBIT "A"

DESCRIPTION OF BOUNDARIES

The boundaries of Zone 161 to be annexed into Landscaping and Lighting Maintenance District No. 89-1-Consolidated, of the County of Riverside, are coterminous with the boundaries of 8 parcels as shown on Parcel Map No. 36124 in the County of Riverside, State of California for fiscal year 2011-12.

- 1
- 2
- 3
- 4
- 5
- 6
- 7
- 8
- 9
- 10
- 11
- 12
- 13
- 14
- 15
- 16
- 17
- 18
- 19
- 20
- 21
- 22
- 23
- 24

ZONE 161

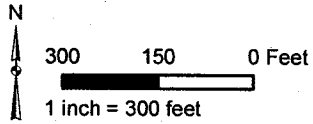
PORTION OF SECTION 8, T.4S., R.4W.

PARCEL MAP NO. 36124

8 PARCELS

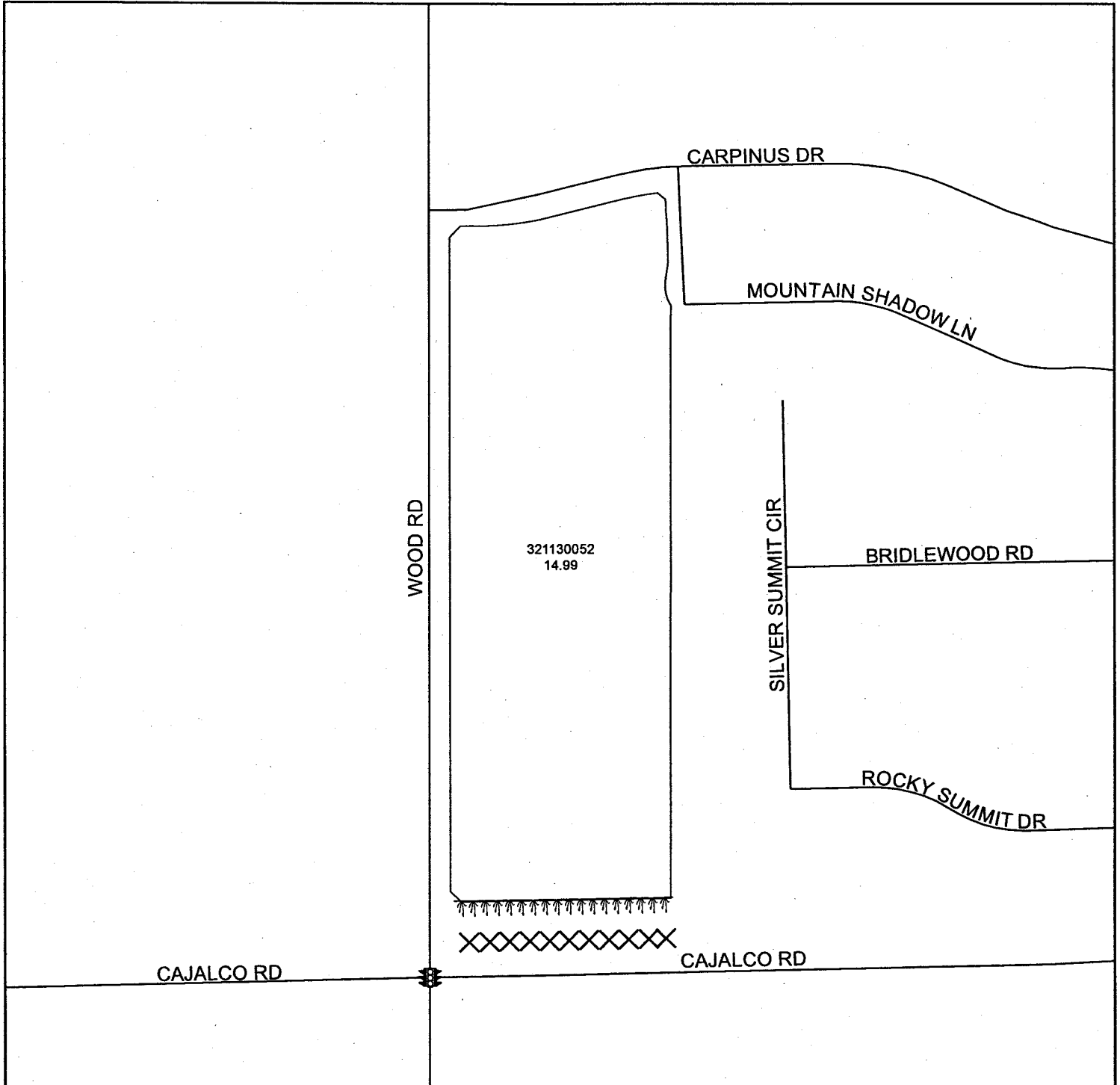


The County of Riverside assumes no warranty or legal responsibility for the information contained on this map. Data and information represented on this map is subject to updates, modifications and may not be complete or appropriate for all purposes. County GIS and other sources should be queried for the most current information. Do not copy or resell this map.



ASSESSMENT DIAGRAM

Printed by jpickeri on 3/16/11



DENOTES LANDSCAPED AND MAINTAINED PARKWAY

DENOTES FUTURE LANDSCAPED AND MAINTAINED MEDIAN

DENOTES MAINTAINED TRAFFIC SIGNAL