

MINUTES OF THE BOARD OF SUPERVISORS
COUNTY OF RIVERSIDE, STATE OF CALIFORNIA



9.1

9:30 a.m. being the time set for public hearing on the recommendation from Executive Office regarding the Supervisorial Districting Plan, the chairman called the matter for hearing.

Jay Orr, Assistant Executive Officer, Executive Office, presented the matter.

On motion of Supervisor Ashley, seconded by Supervisor Tavaglione and duly carried by unanimous vote, IT WAS ORDERED that the above matter is continued to include Proposal C to Tuesday, July 26, 2011 at 9:30 a.m and August 16, 2011.

I hereby certify that the foregoing is a full true, and correct copy of an order made and entered on July 12, 2011 of Supervisors Minutes.

WITNESS my hand and the seal of the Board of Supervisors
Dated: July 12, 2011
Kecia Harper-Ihem, Clerk of the Board of Supervisors, in
and for the County of Riverside, State of California.

(seal)

By: *Kecia Harper-Ihem* Deputy

AGENDA NO.
9.1

xc: EO, COB

From: Trone, Kim
Sent: Tuesday, July 05, 2011 12:22 PM
To: Harper-Ihem, Kecia; Rector, Kimberly
Cc: Stahovich, Dave; Buster, Bob
Subject: FW: Redistricting

Per Riverside Councilman Andy Melendrez's request, please submit the email below into the public record on Riverside County's redistricting of supervisorial boundaries.

Thanks,
Kim

From: Melendrez, Andy [<mailto:ASMelendrez@riversideca.gov>]
Sent: Thursday, June 30, 2011 2:23 PM
To: Trone, Kim
Subject: Re: Redistricting

Please do.

Andy

Sent from my iPad

On Jun 30, 2011, at 4:38 PM, "Trone, Kim" <KTrone@rcbos.org> wrote:

Thank you Andy. Do u want me to introduce your comments into the public record?

Sent from my SamsunKimberly g Epic™ 4

"Melendrez, Andy" wrote:

Kim,

Thank you for the maps. It has been my experience in ward 2 that the Eastside and the Canyon Crest area enjoy a unique relation. Many who live in the Canyon Crest area are aware of the needs of the Eastside community and many community organization such as the Rotary and Kiwanis Clubs have been engaged in many events sponsored in the area. Social issues and concerns are often shared by both and often responses are facilitated by myself and staff members. Having both areas in the same district assist and sharing similar public works projects, police patrol, park and recreational facilities, and concerns as UCR continues to grow. I recommend that the areas remain in the same districts.

In looking at the alternative (option B) it would appear to socially isolated the Eastside from both downtown and the rest of the district. They would be divided by the 91 freeway from downtown and separated from the rest of the district which would not appear to be of benefit to the community.

Sincerely,

Andy Melendrez
Ward 2 City Council

Sent from my iPad

**SUBMITTAL TO THE BOARD OF SUPERVISORS
COUNTY OF RIVERSIDE, STATE OF CALIFORNIA**

972



FROM: Executive Office

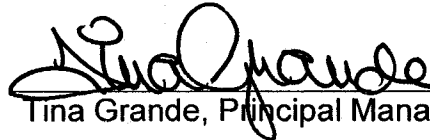
SUBMITTAL DATE:
June 8, 2011

SUBJECT: Supervisorial Redistricting Plan

RECOMMENDED MOTION: That the Board of Supervisors: 1) receive and file the attached recommendations by the Redistricting Steering Committee; and 2) set for public hearing on June 28, 2011 the attached proposed Supervisorial Redistricting Plans to adjust the boundaries of the Districts.

BACKGROUND: Under California Elections Code § 21500, the Board of Supervisors is required to adjust Supervisorial District boundaries following each decennial federal census, using the census numbers as a basis. The general goal of the "One Person One Vote Rule" mandated by the Federal and State Constitutions is to produce Districts which shall be as nearly equal in populations as may be, although Federal Court decisions have indicated that a maximum deviation from population equality of less than ten percent between Districts is generally permissible.

Continued


Tina Grande, Principal Management Analyst

FINANCIAL DATA

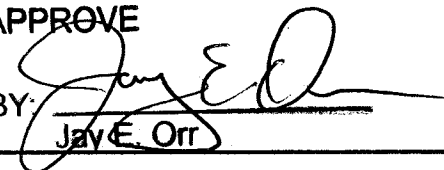
Current F.Y. Total Cost:	\$ N/A	In Current Year Budget:	N/A
Current F.Y. Net County Cost:	\$ N/A	Budget Adjustment:	N/A
Annual Net County Cost:	\$ N/A	For Fiscal Year:	N/A

SOURCE OF FUNDS: N/A

Positions To Be Deleted Per A-30	<input type="checkbox"/>
Requires 4/5 Vote	<input type="checkbox"/>

C.E.O. RECOMMENDATION:

APPROVE

BY: 
Jay E. Orr

County Executive Office Signature

- Consent
- Policy
- Consent
- Policy

MINUTES OF THE BOARD OF SUPERVISORS

On motion of Supervisor Buster, seconded by Supervisor Benoit and duly carried by unanimous vote, IT WAS ORDERED that the above matter is approved as recommended, and is set for public hearing on Tuesday, June 28, 2011, at 9:30 a.m.

Ayes: Buster, Tavaglione, Stone, Benoit and Ashley

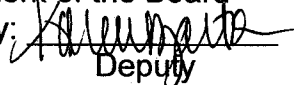
Nays: None

Absent: None

Date: June 14, 2011 9:51:20

xc: EO, COB

Kecia Harper-Ihem
Clerk of the Board

By: 
Deputy

- Dept Recomm.:
- Per Exec. Ofc.:

Prev. Agn. Ref.: 3.100 (8/31/10),
3.9 (9/28/10)

District: All

Agenda Number:

9.1

California Elections Code § 21500 also requires that the adjustment of Supervisorial District boundaries must comply with the Federal Voting Rights Act as well as give consideration to the following factors: a) topography, b) geography, c) cohesiveness, contiguity, integrity, and compactness of territory, and d) communities of interests of the districts.

Federal Census data released in March 2011, reveal the following population by Supervisorial District: 1st District, 422,327; 2nd District, 407,271; 3rd District, 517,853; 4th District, 396,579; and, 5th District, 445,611. An equal distribution of the County's total population of 2,189,641 would put 437,928 residents in each Supervisorial District.

Per Agenda Item 3.9 on September 28, 2010, the Executive Office created a Redistricting Steering Committee. The Committee is comprised of County Assessor Larry Ward, Assistant CEO Jay Orr, and the chief of staff to each of the five members of the Board of Supervisors. The Committee is supported by staff from the Executive Office, County Counsel, Transportation Land Management Agency (TLMA), Registrar of Voters, and the Economic Development Agency.

Beginning on October 26, 2010, the Committee held a total of fourteen meetings, including three evening public outreach forums. The outreach forums allowed the public who were unable to attend the daytime meetings an opportunity to observe first-hand the progress of the Committee and provide input in-person to the Committee. Moreover, two of the outreach forums were held in outlying communities where it was more convenient for the attendance of members of the public from the Desert and Southwest areas of the County. Input was also provided via email, the redistricting website, the U.S. Postal Service, and in-person at the daytime redistricting meetings held at the County Administrative Center. Additional outreach efforts were conducted through the website, weekly updates by Supervisor Ashley at the Board of Supervisor meetings, and through press releases.

The initial meetings were spent finalizing the work plan, determining which specialized mapping software should be purchased, and discussing the legal criteria governing Supervisorial District boundary changes. The updated census population numbers were received by the County in March 2011. Once the numbers were received and the target population of 437,928 for each district was calculated, the Committee began the task of developing one or more Supervisorial Redistricting Plans that would include new boundary lines.

The Committee decided that each district representative should meet with TLMA:GIS staff and develop individual district maps to present to the entire Committee. Upon the completion of all five individual maps, TLMA:GIS staff was able to combine the individual efforts together into one map which identified areas of agreement and few areas labeled undecided. Draft versions of each individual effort, and the consolidated map, were ultimately presented in the public outreach forums.

After considering public input, the Committee was able to make decisions as to most of the undecided areas. The Committee gave particular emphasis to avoiding the division of cities and other communities of interests throughout the County with the exception of the City of Riverside due to its size and population. Despite the Committee's general consensus from a countywide perspective, the boundary between District 1 and District 2 could not win unanimous approval due primarily to differences as to where the boundary lines are drawn within the City of Riverside. As a result, the Committee decided it was most appropriate to recommend the two attached Supervisorial Redistricting Plan proposals to the Board of Supervisors for its review.

The action today will set a public hearing for June 28, 2011. At least two public hearings are required to be held on any redistricting plan proposal before it can be adopted. The tentative work plan included the dates of July 12, 2011 and July 26, 2011, for additional public hearings. At the conclusion of the last public hearing, the Board of Supervisors may approve a Supervisorial Redistricting Plan. The county surveyor will then prepare a legal description that conforms to the boundaries of the new supervisorial districts referenced in the approved Supervisorial Redistricting Plan. It is anticipated that Survey's legal description task will be completed by the end of August. An implementing ordinance enacting the approved Supervisorial Redistricting Plan must be adopted by the Riverside County Board of Supervisors no later than September 30, 2011 in order for the necessary boundary adjustments to be effective before November 1, 2011 as required by California Elections Code § 21501.

If the Board of Supervisors fails to complete the redistricting process before November 1, 2011 then a redistricting commission composed of the district attorney, the county assessor, and the county superintendent of schools will have until December 30, 2011 to make the adjustment.

The recommended motion today is for the Board of Supervisors to set for future public hearing the two recommended Supervisorial Redistricting Plan proposals; however, the Board is not limited to these proposals and it may consider alternative redistricting plan proposals to be reviewed as part of the public hearing process.

ATTACHMENT

The target population for each district is **437,928** people.

Existing Supervisorial District Boundary	CENSUS 2010		
	Population 2010	Gain or Loss To Target	% Gain or Loss Needed
1	422,327	+15,601	+3.56%
2	407,271	+30,657	+7.00%
3	517,853	-79,925	-18.25%
4	396,579	+41,349	+9.44%
5	445,611	-7,683	-1.75%
County Total	2,189,641	-	-



OFFICE OF
CLERK OF THE BOARD OF SUPERVISORS
1st FLOOR, COUNTY ADMINISTRATIVE CENTER
P.O. BOX 1147, 4080 LEMON STREET
RIVERSIDE, CA 92502-1147
PHONE: (951) 955-1060
FAX: (951) 955-1071

KECIA HARPER-IHEM
Clerk of the Board of Supervisors

KIMBERLY A. RECTOR
Assistant Clerk of the Board

June 13, 2011

THE PRESS ENTERPRISE
ATTN: LEGALS
P.O. BOX 792
RIVERSIDE, CA 92501

FAX: (951) 368-9018
E-MAIL: legals@pe.com

RE: NOTICE OF PUBLIC HEARING: SUPERVISORIAL REDISTRICTING PLAN

To Whom It May Concern:

Attached is a copy for publication in your newspaper for **ONE (1) TIME on Friday, June 17, 2011.**

We require your affidavit of publication immediately upon completion of the last publication.

Your invoice must be submitted to this office in duplicate, **WITH TWO CLIPPINGS OF THE PUBLICATION.**

NOTE: PLEASE COMPOSE THIS PUBLICATION INTO A SINGLE COLUMN FORMAT.

Thank you in advance for your assistance and expertise.

Sincerely,

Mcgil

Cecilia Gil, Board Assistant to
KECIA HARPER-IHEM, CLERK OF THE BOARD

Gil, Cecilia

To: PE Legals
Subject: RE: FOR PUBLICATION: Supervisorial Redistricting Plan

From: PE Legals [mailto:legals@pe.com]
Sent: Monday, June 13, 2011 2:10 PM
To: Gil, Cecilia
Subject: RE: FOR PUBLICATION: Supervisorial Redistricting Plan

Haha...sorry. Medication from the dentist this morning must not be worn off yet. June 17th it is.

Thank You!
enterprisemedia
Publisher of the Press-Enterprise
Maria G. Tinajero • Legal Advertising Department
1-800-880-0345 • Fax: 951-368-9018 • email: legals@pe.com

Please Note: Deadline is 10:30 AM two (2) business days prior to the date you would like to publish.
Additional days required for larger ad sizes

From: Gil, Cecilia [mailto:CCGIL@rcbos.org]
Sent: Monday, June 13, 2011 2:06 PM
To: PE Legals
Subject: RE: FOR PUBLICATION: Supervisorial Redistricting Plan

No Maria...June 17 (Friday)...

Cecilia Gil
Board Assistant to the
Clerk of the Board of Supervisors
951-955-8464

**THE COUNTY ADMINISTRATIVE CENTER IS CLOSED EVERY FRIDAY UNTIL FURTHER NOTICE.
PLEASE CONSIDER THE ENVIRONMENT BEFORE PRINTING.**

From: PE Legals [mailto:legals@pe.com]
Sent: Monday, June 13, 2011 2:04 PM
To: Gil, Cecilia
Cc: Rector, Kimberly
Subject: RE: FOR PUBLICATION: Supervisorial Redistricting Plan

Received for publication on June 16

Thank You!
enterprisemedia
Publisher of the Press-Enterprise
Maria G. Tinajero • Legal Advertising Department
1-800-880-0345 • Fax: 951-368-9018 • email: legals@pe.com

Please Note: Deadline is 10:30 AM two (2) business days prior to the date you would like to publish.
Additional days required for larger ad sizes



OFFICE OF
CLERK OF THE BOARD OF SUPERVISORS
1st FLOOR, COUNTY ADMINISTRATIVE CENTER
P.O. BOX 1147, 4080 LEMON STREET
RIVERSIDE, CA 92502-1147
PHONE: (951) 955-1060
FAX: (951) 955-1071

KECIA HARPER-IHEM
Clerk of the Board of Supervisors

KIMBERLY A. RECTOR
Assistant Clerk of the Board

June 13, 2011

THE DESERT SUN
ATTN: LEGALS
P.O. BOX 2734
PALM SPRINGS, CA 92263

FAX: (760) 778-4731
E-MAIL: legals@thedesertsun.com

RE: NOTICE OF PUBLIC HEARING: SUPERVISORIAL REDISTRICTING PLAN

To Whom It May Concern:

Attached is a copy for publication in your newspaper for **ONE (1) TIME on Friday, June 17, 2011.**

We require your affidavit of publication immediately upon completion of the last publication.

Your invoice must be submitted to this office in duplicate, **WITH TWO CLIPPINGS OF THE PUBLICATION.**

NOTE: PLEASE COMPOSE THIS PUBLICATION INTO A SINGLE COLUMN FORMAT.

Thank you in advance for your assistance and expertise.

Sincerely,

Mcgil

Cecilia Gil, Board Assistant to
KECIA HARPER-IHEM, CLERK OF THE BOARD

Gil, Cecilia

From: Moeller, Charlene <CMOELLER@palmspri.gannett.com>
Sent: Tuesday, June 14, 2011 9:47 AM
To: Gil, Cecilia
Subject: RE: FOR PUBLICATION: Supervisorial Redistricting Plan

Ad received and will publish on date(s) requested.

Charlene Moeller | Media Sales Legal Notice Coordinator
The Desert Sun Media Group
750 N. Gene Autry Trail, Palm Springs, CA 92262
t 760.778.4578 | f 760.778.4731
legals@thedesertsun.com | dpwlegals@thedesertsun.com
The Coachella Valley's #1 Source in News & Advertising!
www.mydesert.com | twitter @MyDesert | facebook MyDesert.com

From: Gil, Cecilia [<mailto:CCGIL@rcbos.org>]
Sent: Monday, June 13, 2011 1:48 PM
To: tds-legals
Cc: Rector, Kimberly
Subject: FOR PUBLICATION: Supervisorial Redistricting Plan

Hi Charlene,

Here's the Notice we've been going back and forth with, last week. They have reduced the size of the map and did a lot of good imaging revisions so hopefully, it will come out better....

Notice of Hearing, for publication on Friday, June 17, 2011. **There is a possibility that a 3rd map will be considered by the Board at tomorrow's meeting, to be added to this Notice.** In this case, can you please possibly reserve a space for that? Please confirm. Thank you very much!

Is it possible to see a proof of pub?

Cecilia Gil

Board Assistant to the
Clerk of the Board of Supervisors
951-955-8464

**THE COUNTY ADMINISTRATIVE CENTER IS CLOSED EVERY FRIDAY UNTIL FURTHER NOTICE.
PLEASE CONSIDER THE ENVIRONMENT BEFORE PRINTING.**



OFFICE OF
CLERK OF THE BOARD OF SUPERVISORS
1st FLOOR, COUNTY ADMINISTRATIVE CENTER
P.O. BOX 1147, 4080 LEMON STREET
RIVERSIDE, CA 92502-1147
PHONE: (951) 955-1060
FAX: (951) 955-1071

KECIA HARPER-IHEM
Clerk of the Board of Supervisors

KIMBERLY A. RECTOR
Assistant Clerk of the Board

June 13, 2011

PALO VERDE VALLEY TIMES
ATTN: LEGALS
P.O. BOX 1159
BLYTHE, CA 92226

TEL: (760) 922-3181
E-MAIL: classifieds@paloverdevalleytimes.com

RE: NOTICE OF PUBLIC HEARING: SUPERVISORIAL REDISTRICTING PLAN

To Whom It May Concern:

Attached is a copy for publication in your newspaper for **ONE (1) TIME on Friday, June 17, 2011.**

We require your affidavit of publication immediately upon completion of the last publication.

Your invoice must be submitted to this office in duplicate, WITH TWO CLIPPINGS OF THE PUBLICATION.

NOTE: PLEASE COMPOSE THIS PUBLICATION INTO A SINGLE COLUMN FORMAT.

Thank you in advance for your assistance and expertise.

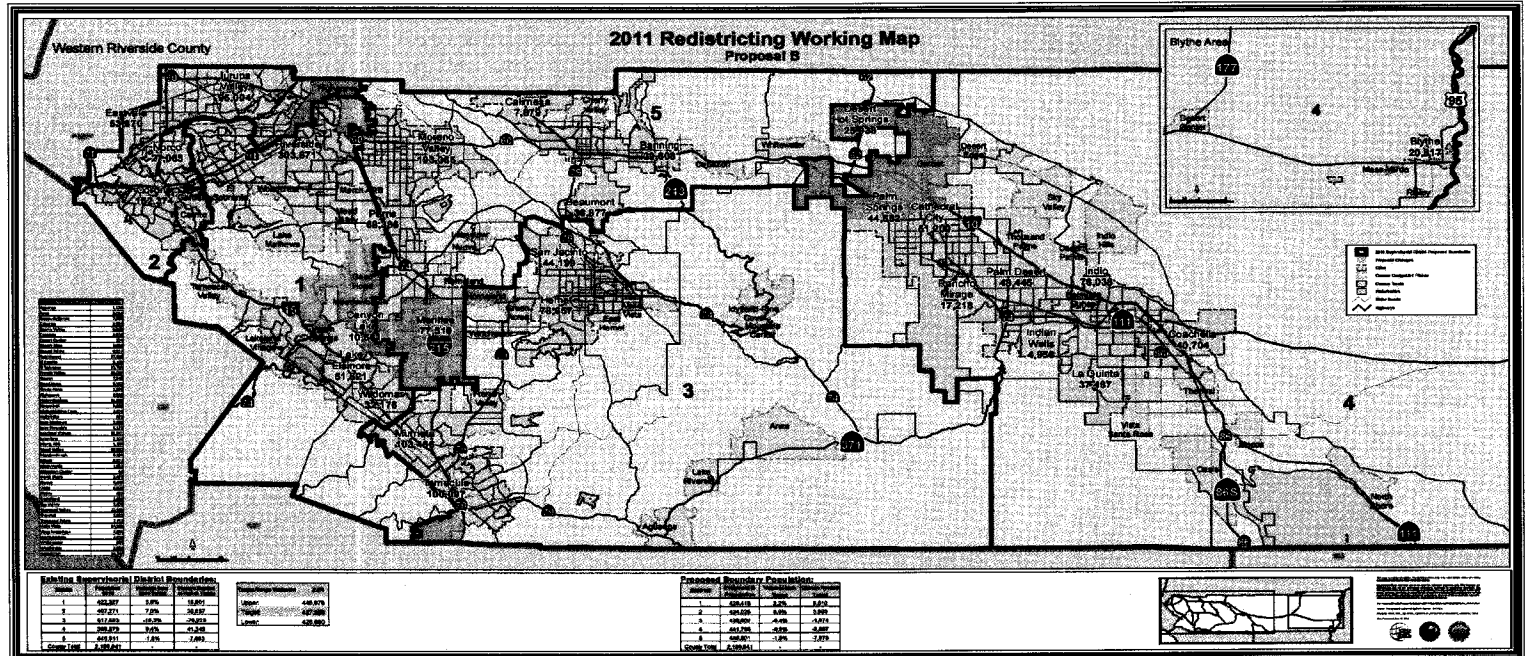
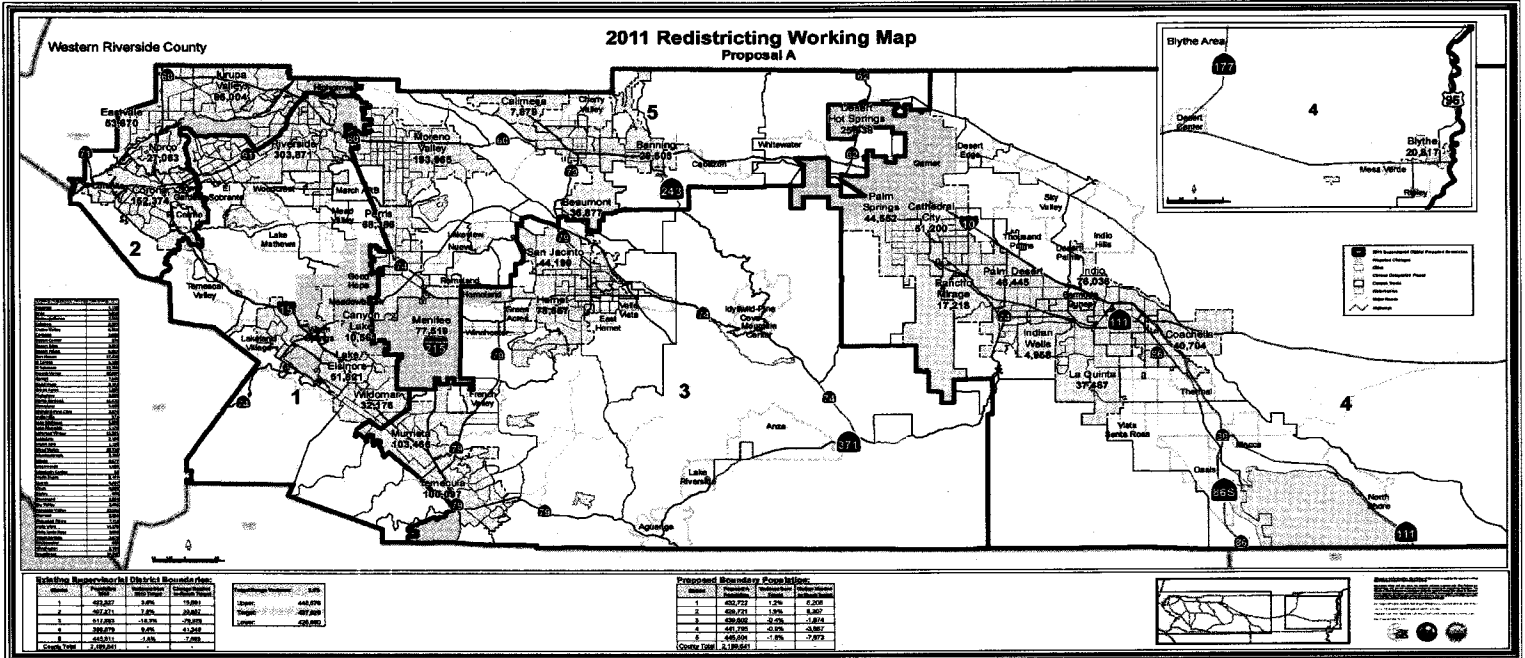
Sincerely,

Mcgil

Cecilia Gil, Board Assistant to
KECIA HARPER-IHEM, CLERK OF THE BOARD

NOTICE OF PUBLIC HEARING BEFORE THE BOARD OF SUPERVISORS OF RIVERSIDE COUNTY

NOTICE IS HEREBY GIVEN that a public hearing at which all interested persons will be heard, will be held before the Board of Supervisors of Riverside County, California, on the 1st Floor Board Chambers, County Administrative Center, 4080 Lemon Street, Riverside, on **Tuesday, June 28, 2011, at 9:30 a.m.** to consider the following Supervisorial Redistricting Plan:



Any person wishing to testify in support of or in opposition may do so in writing between the date of this notice and the public hearing, or may appear and be heard at the time and place noted above. All written comments received prior to the public hearing will be submitted to the Board of Supervisors and the Board of Supervisors will consider such comments, in addition to any oral testimony, before making a decision on the proposed plan.

Please send all written correspondence to:
 Clerk of the Board
 4080 Lemon Street, 1st Floor
 Post Office Box 1147
 Riverside, CA 92502-1147
 Kecia Harper-Ihem
 Clerk of the Board
 By: Cecilia Gil, Board Assistant

Dated: June 13, 2011

Pub.: June 17, 2011

NOTICE OF PUBLIC HEARING BEFORE THE BOARD OF SUPERVISORS OF RIVERSIDE COUNTY

NOTICE IS HEREBY GIVEN that a public hearing at which all interested persons will be heard, will be held before the Board of Supervisors of Riverside County, California, on the 1st Floor Board Chambers, County Administrative Center, 4080 Lemon Street, Riverside, on **Tuesday, June 28, 2011, at 9:30 a.m.** to consider the following Supervisorial Redistricting Plans:

(INSERT PROPOSAL A MAP)

(INSERT PROPOSAL B MAP)

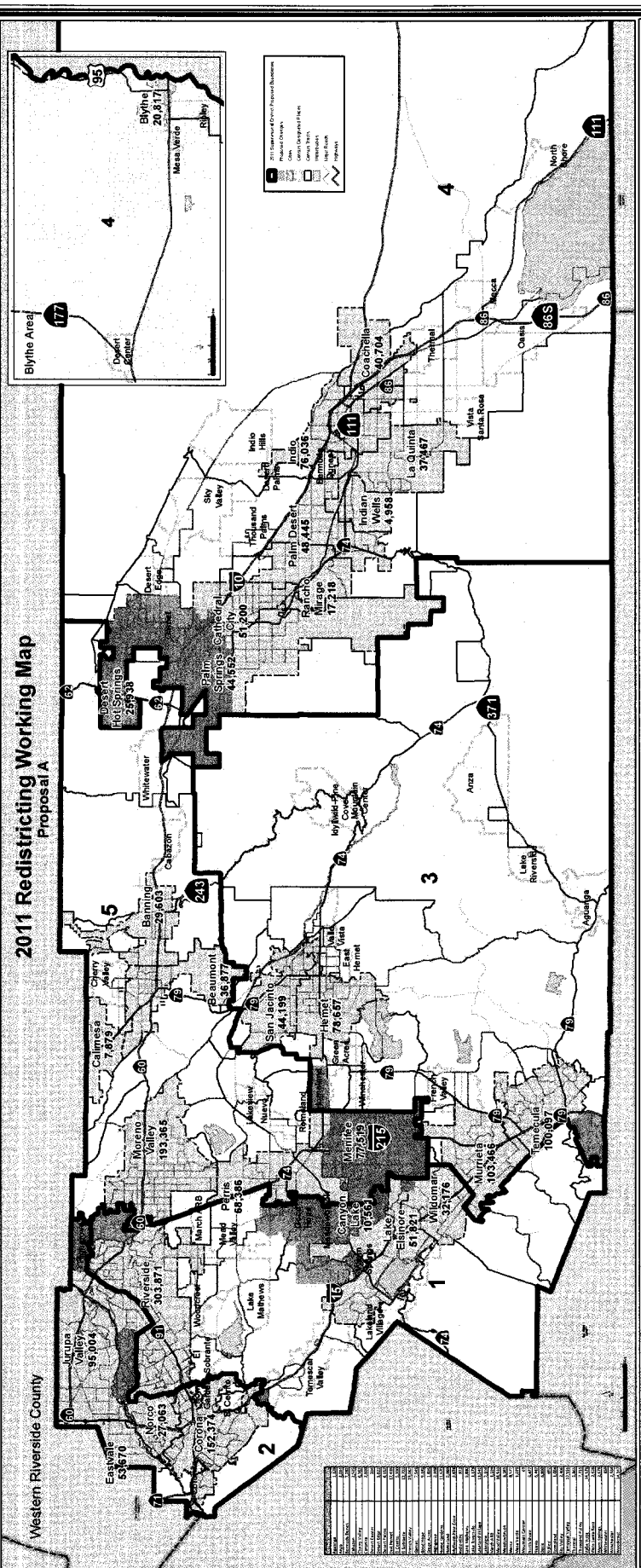
Any person wishing to testify in support of or in opposition may do so in writing between the date of this notice and the public hearing, or may appear and be heard at the time and place noted above. All written comments received prior to the public hearing will be submitted to the Board of Supervisors and the Board of Supervisors will consider such comments, in addition to any oral testimony, before making a decision on the proposed plans.

Please send all written correspondence to: Clerk of the Board
4080 Lemon Street, 1st Floor
Post Office Box 1147
Riverside, CA 92502-1147

Dated: June 13, 2011

Kecia Harper-Ihem
Clerk of the Board
By: Cecilia Gil, Board Assistant

2011 Redistricting Working Map Proposal A



2011 Redistricting Working Map

- City
- County
- State
- City
- County
- State
- City
- County
- State

Proposed Boundary Population:

District	Population	Weighted	Change from 2000
1	432,732	1.8%	8,206
2	459,231	1.9%	8,207
3	459,692	1.9%	8,207
4	449,801	1.9%	8,207
5	449,801	1.9%	8,207
County Total	2,189,641		

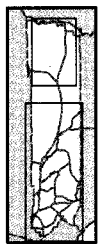
Proposed District Boundaries:

District	Population	Weighted	Change from 2000
1	448,870	1.9%	8,207
2	457,271	1.9%	8,207
3	457,271	1.9%	8,207
4	448,870	1.9%	8,207
5	448,870	1.9%	8,207
County Total	2,189,641		

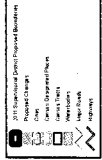
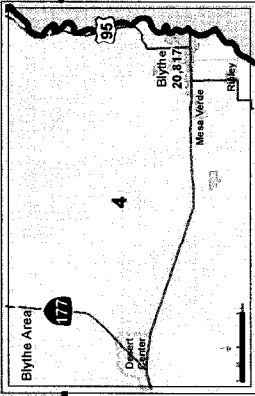
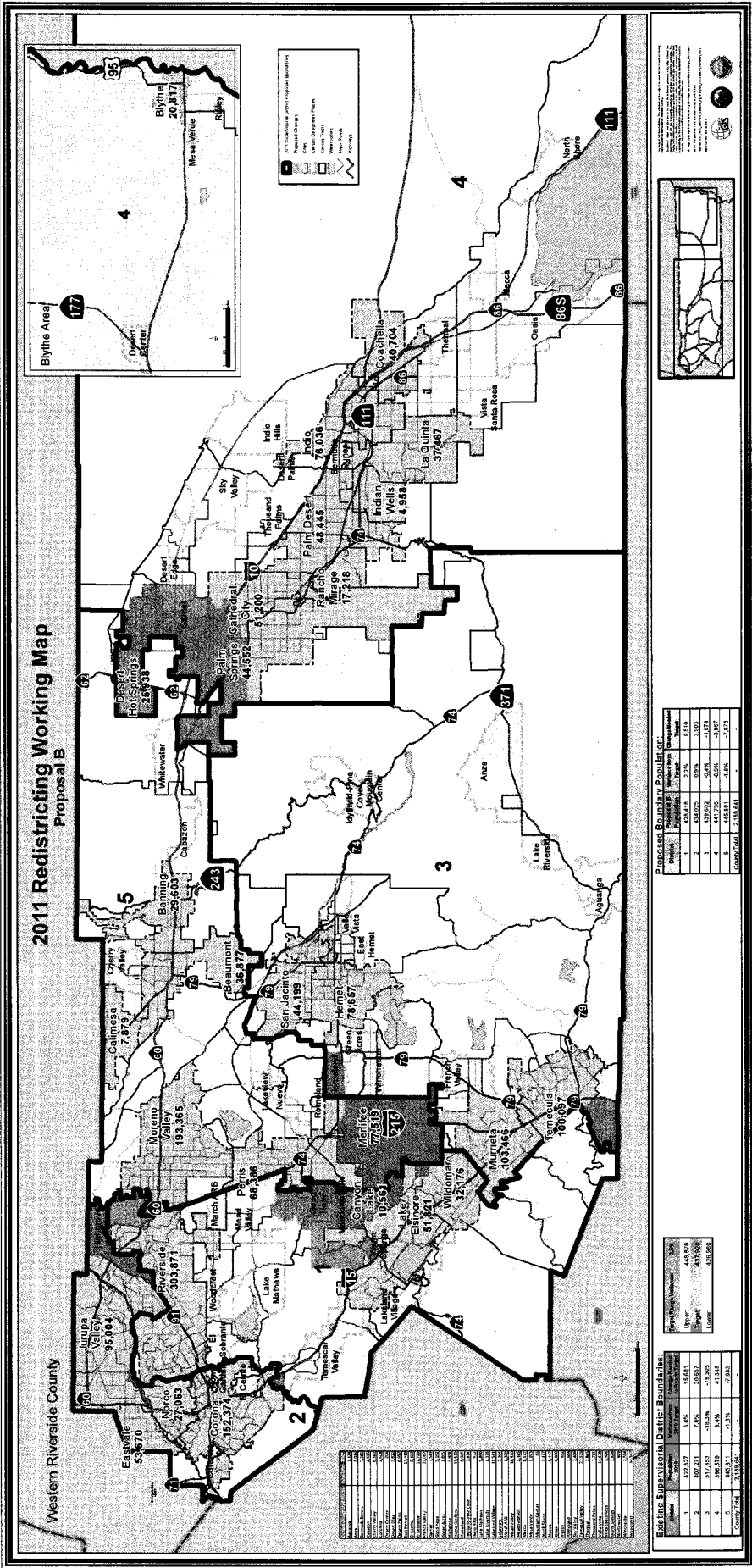
Existing District Boundaries:

District	Population	Weighted	Change from 2000
1	432,732	1.8%	8,206
2	459,231	1.9%	8,207
3	459,692	1.9%	8,207
4	449,801	1.9%	8,207
5	449,801	1.9%	8,207
County Total	2,189,641		

District	Population	Weighted	Change from 2000
1	432,732	1.8%	8,206
2	459,231	1.9%	8,207
3	459,692	1.9%	8,207
4	449,801	1.9%	8,207
5	449,801	1.9%	8,207
County Total	2,189,641		



2011 Redistricting Working Map Proposal B



Existing Precinct/District Boundaries

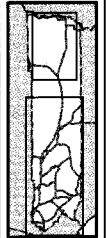
District	Population	% Change
1	623,327	3.0%
2	607,271	7.0%
3	517,453	-13.3%
4	442,372	-1.4%
5	482,571	-5.2%
County Total	2,188,541	

Proposed Precinct/District Boundaries

District	Population	% Change
1	434,025	-30.6%
2	539,252	+3.0%
3	445,181	-13.0%
4	445,181	-13.0%
5	335,002	-29.7%
County Total	2,188,541	

Proposed Boundary Population

District	Population	% Change
1	434,025	-30.6%
2	539,252	+3.0%
3	445,181	-13.0%
4	445,181	-13.0%
5	335,002	-29.7%
County Total	2,188,541	



**County of Riverside
Redistricting Steering
Committee**

June 14, 2011

Board of Supervisors Presentation

Redistricting Process

- Every 10 years
- Based on 2010 U.S. Census count
- Guiding principals of redistricting set in state and federal law

Redistricting Process

- County of Riverside Redistricting Steering Committee established by the County Executive Officer
- Committee Membership
 - Larry Ward, Riverside County Assessor/Clerk-Recorder, Chairman
 - Jay Orr, Assistant County Executive Officer, Co-Chairman
 - All five Supervisorial Chiefs of Staff
 - Staff support from County Counsel, Executive Office, Economic Development Agency, Registrar of Voters, and Transportation and Land Management Agency

Redistricting Timeline

- Steering Committee formed during the Fall of 2010
- March 2011 – U.S. Census data was released
- April 2011 – First sets of draft redistricting scenarios prepared by the Steering Committee
- April 2011 – Public input and outreach on April 20 in Riverside at the County Administrative Center; on April 21 in Menifee at the Kay Cenicerros Senior Center; and on April 27 in Desert Hot Springs at the Carl May Building
- May 26, 2011 – Was the last day to submit comments to the Steering Committee for consideration

Redistricting Timeline

- June 14, 2011 – The presentation of redistricting plans to the Riverside County Board of Supervisors
- June 28, 2011 – Tentative first public hearing with the Board of Supervisors
- July 12 and 26, 2011 – Tentative second and third public hearings with the Board of Supervisors
- Supervisorial redistricting plan to be approved by the Board at the conclusion of the last public hearing

Redistricting Timeline

- July/August 2011 – County Surveyor to draft legal description of boundaries for new supervisorial districts
- August/September 2011 – Introduction and subsequent adoption of Riverside County supervisorial redistricting implementing ordinance by the Board of Supervisors
- Redistricting process must be completed prior to November 1, 2011
- To meet the deadline, the plan must be adopted on or before the September 27, 2011 Board meeting

Legal Overview

Preliminary Considerations

- County redistricting process involves the Board of Supervisors making necessary adjustments every 10 years after U.S. Census data is released
- Focus is on the adjustment of Supervisorial District boundary lines
- Not to be confused with California Citizens Redistricting Commission which has jurisdiction over state legislative and federal congressional district adjustments (per Prop. 11, as approved by voters in November 2008; and Prop. 20, as approved by voters in November 2010)

Legal Overview

California Elections Code § 21500

- 1) Districts “shall be as nearly equal in population as may be”
 - One Person One Vote Rule – based on equal protection principles to ensure substantial equality of population among the various districts so that the vote of any citizen is equal in weight. Current Federal Court decisions provide that a maximum deviation from population equality of less than 10% between County districts is generally permissible

Legal Overview

California Elections Code § 21500

2) Districts “shall comply with” the Federal Voting Rights Act – 42 U.S.C. § 1973

- Literally hundreds of cases interpreting the Act which was originally enacted during the 1960s and has been amended several times since by the U.S. Congress. Section 2 of the Act was amended in 1982 to provide for a “results” test where a challenging party does not need to show discriminatory motive or purpose in order to establish a violation

Legal Overview

California Elections Code § 21500

- 3) In establishing District boundaries “the Board may give consideration to the following factors”
- Topography
 - Geography
 - Cohesiveness, Contiguity, Integrity, and Compactness of Territory
 - Community of Interests of the Districts

Legal Overview

Procedural Considerations

- Minimum of two Public Hearings required to be held on any Redistricting Plan proposal before it can be approved
- Implementing Ordinance enacting the approved Redistricting Plan must be adopted by the Board of Supervisors no later than September 30, 2011, in order for the necessary boundary adjustments to be effective before November 1, 2011, as required by California Elections Code § 21501

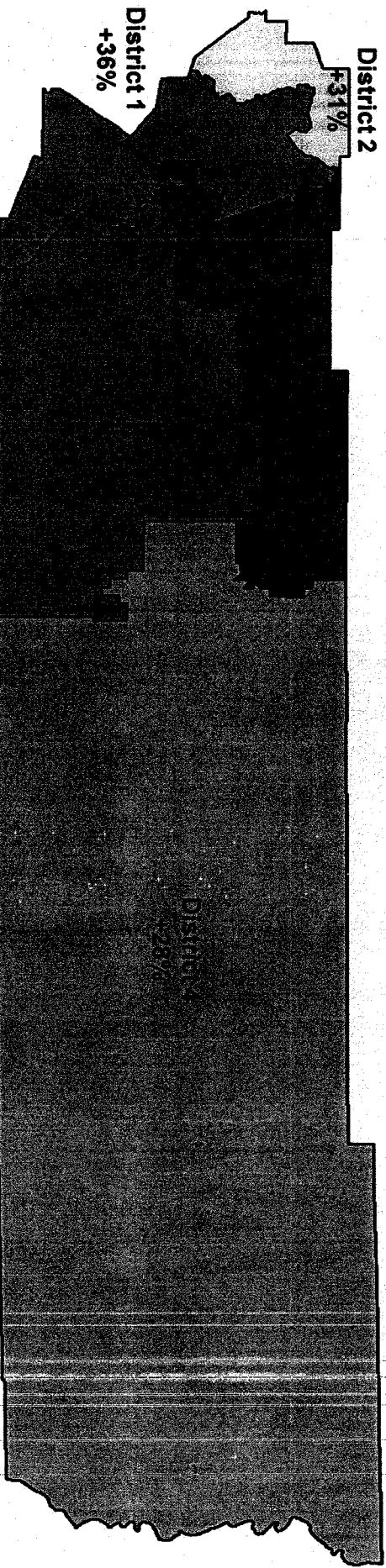
Legal Overview

Procedural Considerations (continued)

- In the event that the Board of Supervisors fails to complete the redistricting process before November 1, 2011, then a supervisory redistricting commission composed of the district attorney, the county assessor, and the county superintendent of schools will have until December 30, 2011 to make any necessary boundary adjustments

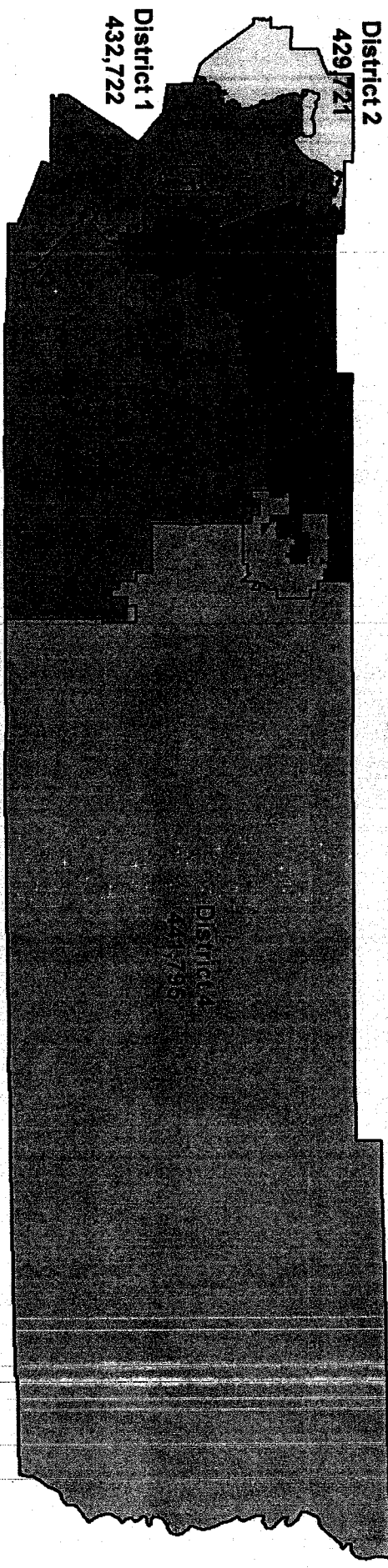
Riverside County Supervisorial Districts

Population Percent Growth from Year 2000 to 2010



District	2000 Population	2010 Population	Growth 2000 - 2010	% Growth	Gain
1	311,253	422,327	111,074	35.7%	
3	311,762	517,853	206,091	66.1%	
5	302,802	445,611	142,809	47.2%	

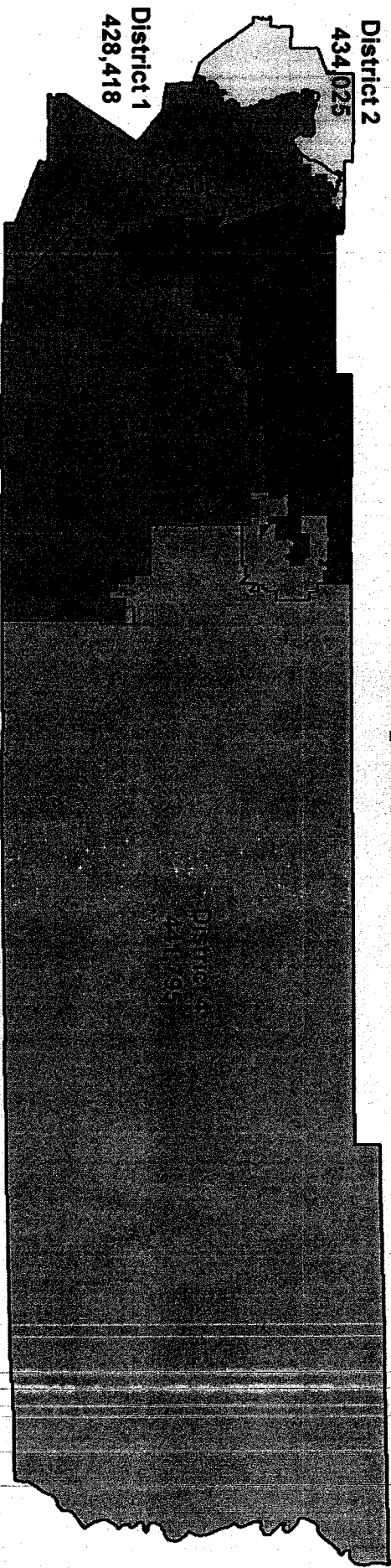
2011 Riverside County Redistricting Proposal A



Target Range Variance:	2.5%
Upper:	448,876
Lower:	426,980

District	2000 Population	2010 Population	Proposal A Population	Variance From Target
1	311,253	422,327	432,722	1.2%
3	311,762	517,853	439,602	-0.4%
5	302,802	445,611	445,801	-1.8%

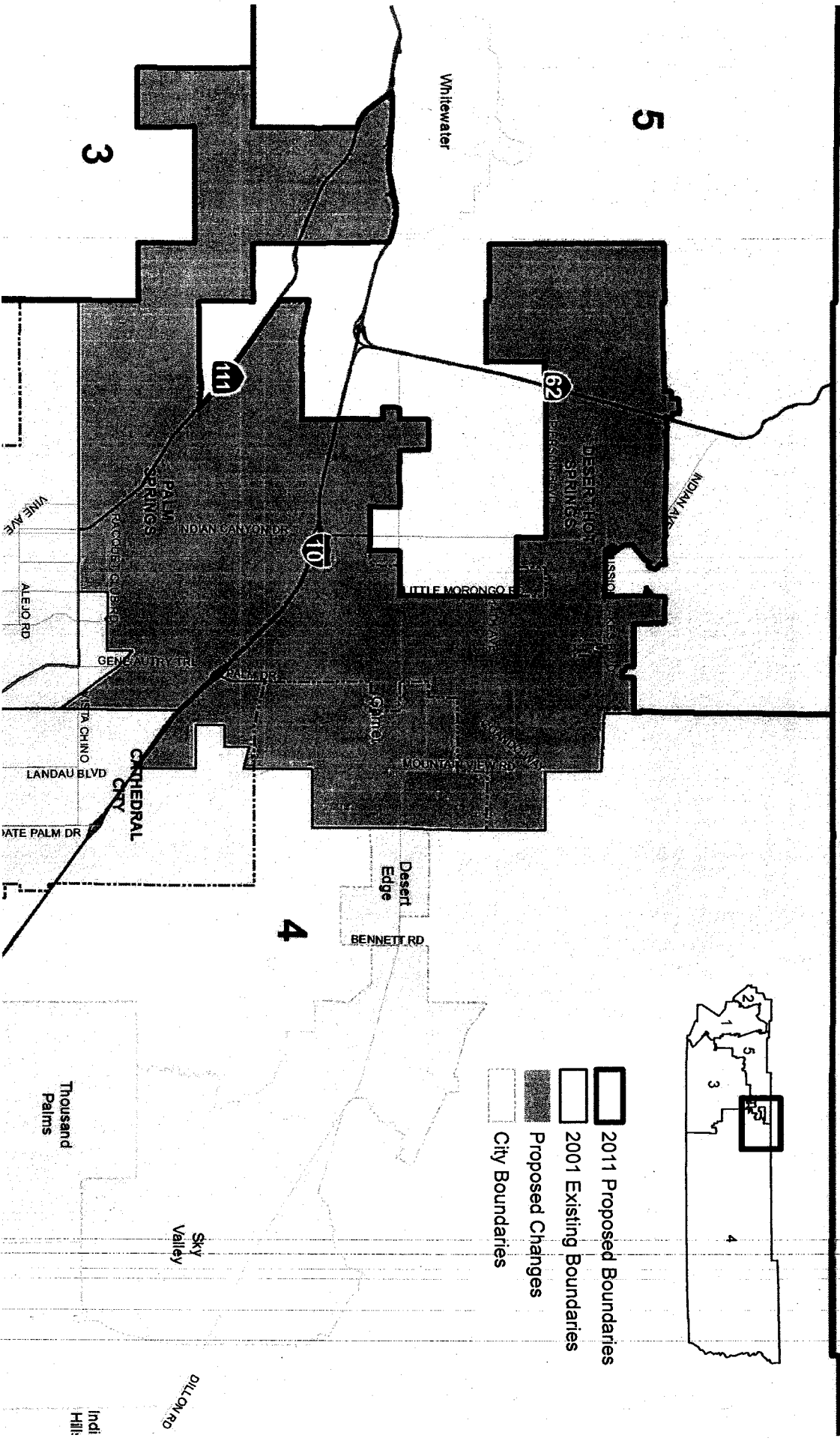
2011 Riverside County Redistricting Proposal B



Target Range Variance:	2.5%
Upper:	448,876
Lower:	426,980





District	2000 Population	2010 Population	Proposal B Population	Variance From Target
1	311,253	422,327	428,418	2.2%
3	311,762	517,853	439,602	-0.4%
5	302,802	445,611	445,801	-1.8%

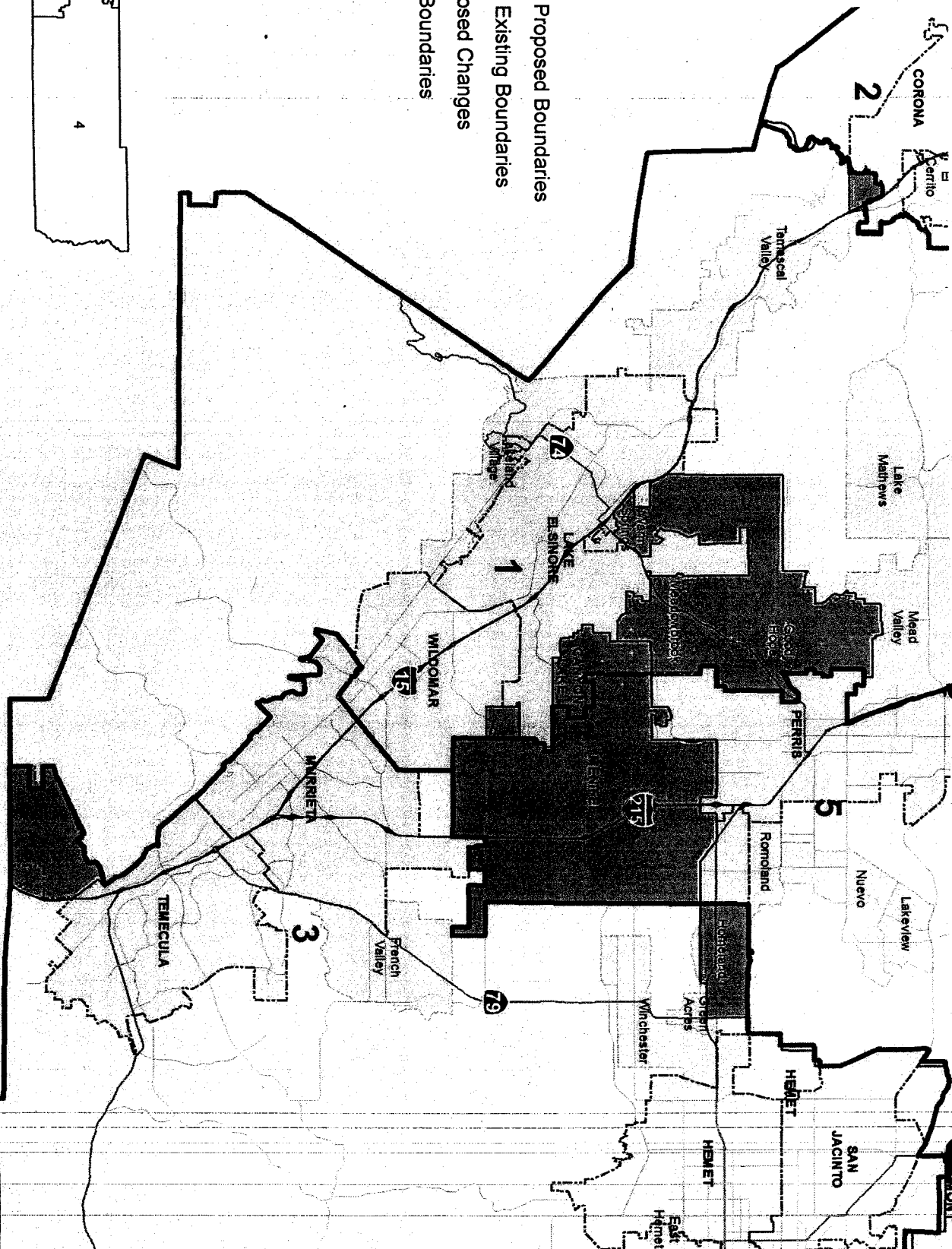
2011 Riverside County Redistricting



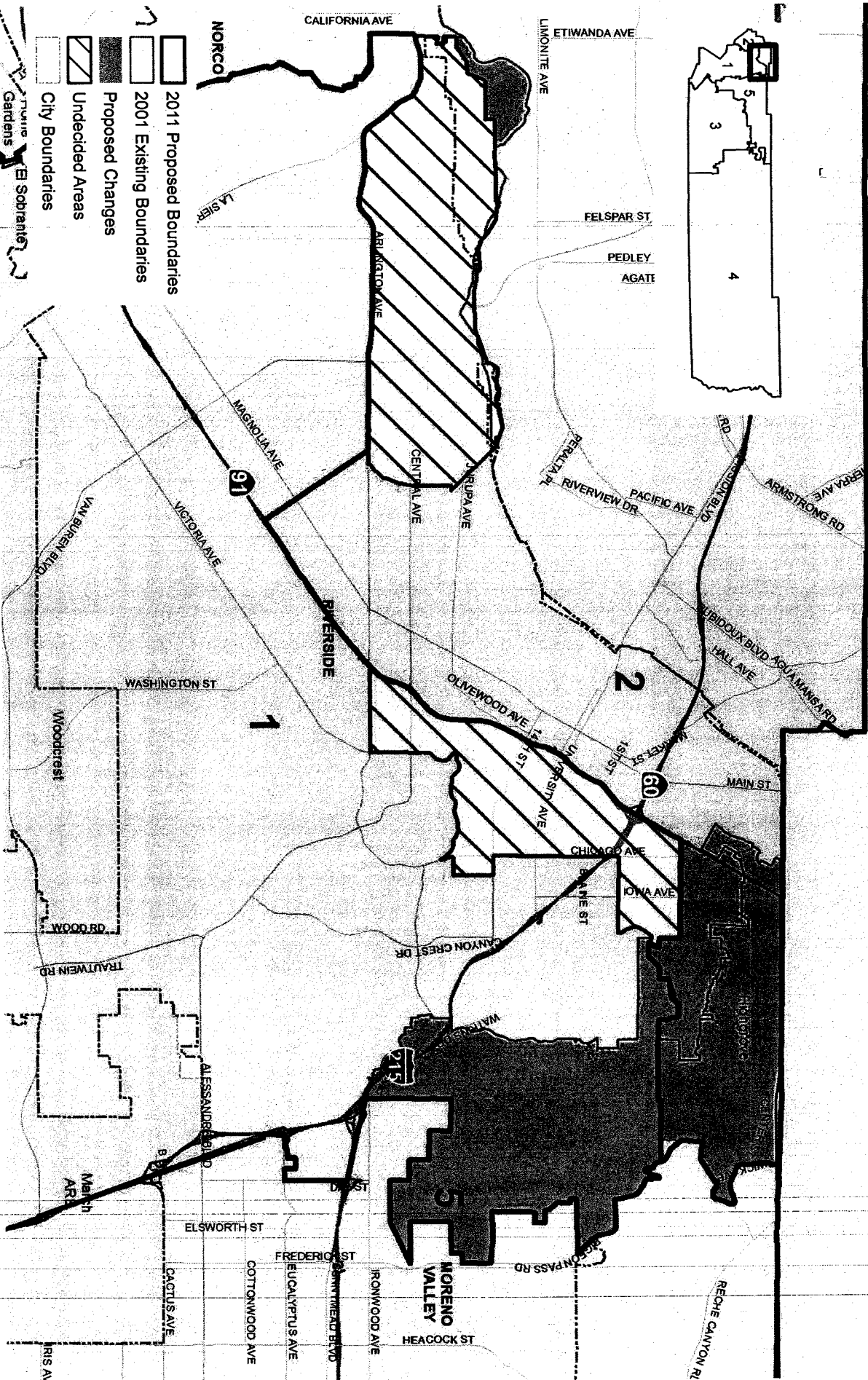
- 2011 Proposed Boundaries
- 2001 Existing Boundaries
- Proposed Changes
- City Boundaries

2011 Riverside County Redistricting

-  2011 Proposed Boundaries
-  2001 Existing Boundaries
-  Proposed Changes
-  City Boundaries



2011 Riverside County Redistricting



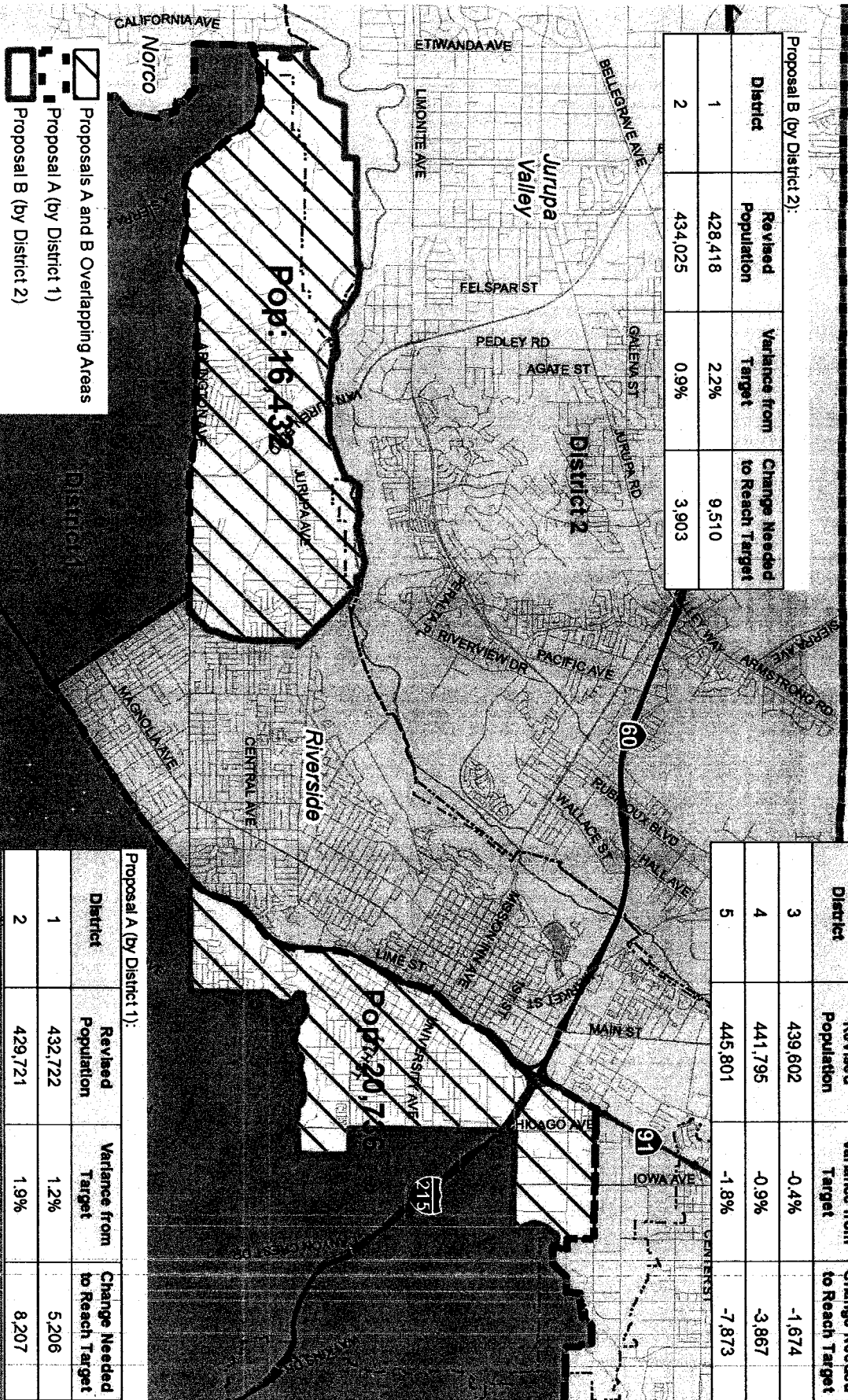
2011 Riverside County Redistricting Proposals A and B Overlapping Areas

Proposal B (by District 2):

District	Revised Population	Variance from Target	Change Needed to Reach Target
1	428,418	2.2%	9,510
2	434,025	0.9%	3,903

Note: Districts 3, 4 and 5 stay constant in both Proposals A and B

District	Revised Population	Variance from Target	Change Needed to Reach Target
3	439,602	-0.4%	-1,674
4	441,795	-0.9%	-3,867
5	445,801	-1.8%	-7,873

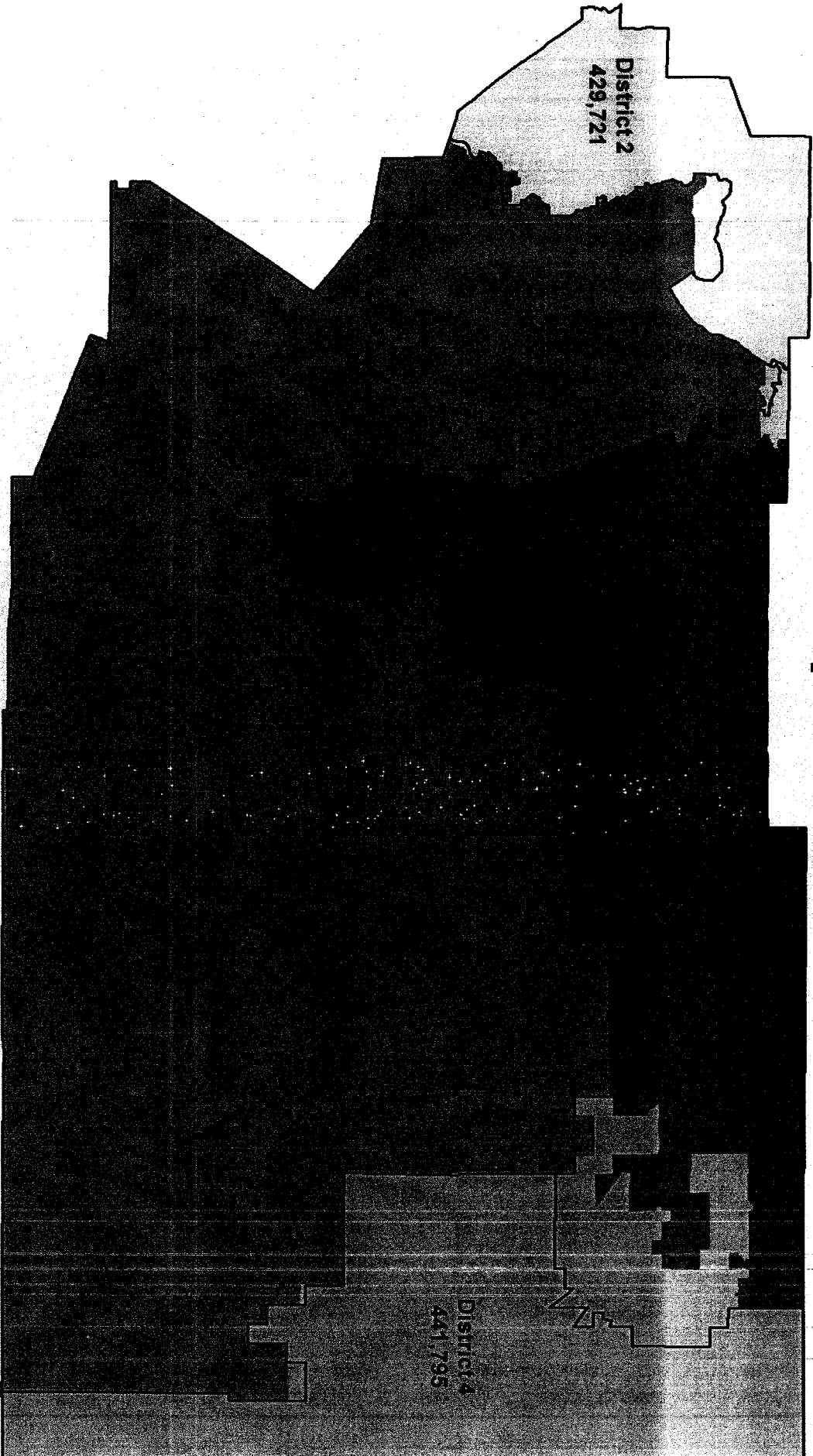


Proposals A and B Overlapping Areas
 Proposal A (by District 1)
 Proposal B (by District 2)

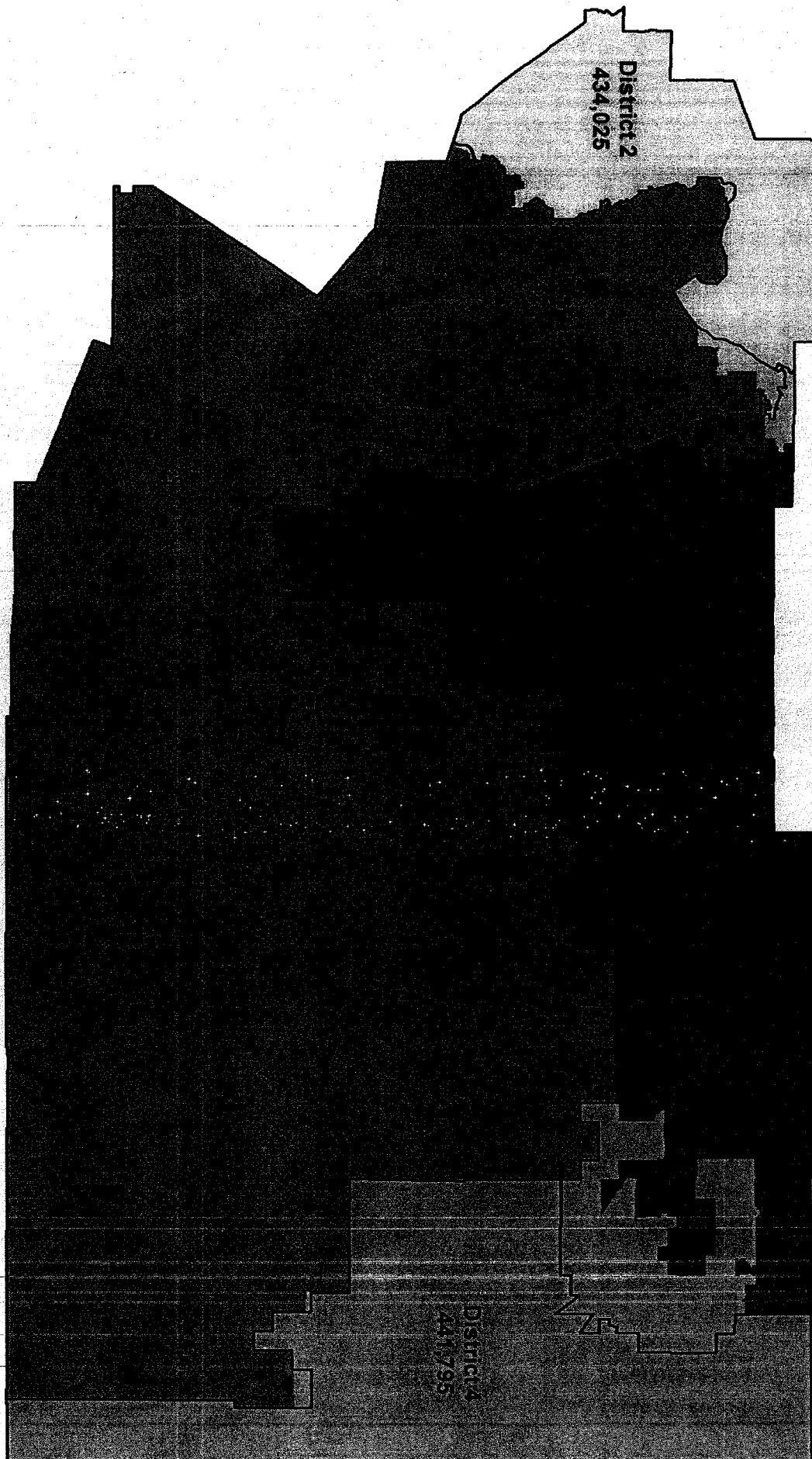
Proposal A (by District 1):

District	Revised Population	Variance from Target	Change Needed to Reach Target
1	432,722	1.2%	5,206
2	429,721	1.9%	8,207

2011 Riverside County Redistricting Proposal A



2011 Riverside County Redistricting Proposal B



July 1, 2011

To the County of Riverside Board of Supervisors and whom it may concern:

We the taxpaying citizens listed below are asking that you keep the communities of Arlanza, La Sierra, Casa Blanca, and the Eastside under Plan A County Redistricting, District 1 Proposal.

Thank you and we look forward to your cooperation.

Signed:

- 1) Lillian Salerio Jim Ortiz Daniel Inacio
- 2) Elvia Alcaraz Beatrice Ramirez Beaut Zamora
- 3) Jamie Ortiz Ronnie Zamora Quin Garcia
- 4) Dora Magdalena HUEY VASQUEZ Bob Garcia
- 5) ~~Angelita~~ ~~Aracelis~~ Paul Chavez
- 6) ~~Toy~~ Bryndi Salmeron Susana Salmeron
- 7) Resemayo Zamora Margaret Olvera Medina Edna Ruiz
- 8) Lucy Tello Emilia Mull Celina Prado
- 9) Tony Tello Grace Badonje (unintelligible)
- 10) Jupita Fogueron Midy Parroja Old (unintelligible)
- 11) Cleo Palmerin ~~Guillermo~~ Rosie O. Mendoza
- 12) Beth Lou Wood ~~Myra~~ Jeferson
- 13) Bea Nelson Kirk Mendez Mano Lopez
- 14) Bita McCoy Nancy R Leon Kathy Gonzalez
- 15) Peter Muto ~~Isabel~~ Joselyn Moya
- 16) Araceli Lopez Cheryl Mendez Mary Zamora
- Rafaela V. Bedolla ~~Victoria~~ Fate Ruiz
- Adela Jimenez Rafael De la Hoya More is Mendaza
- Bernice Jimenez Louise Mayo Submitted by Mendaza

7-12-11 (date) Item 9-1

**Riverside County Board of Supervisors
Request to Speak**

Submit request to Clerk of Board (right of podium),
Speakers are entitled to three (3) minutes, subject
Board Rules listed on the reverse side of this form.

SPEAKER'S NAME: Paul Chavez

Address: 7306 Yemad Villagrosa
(only if follow-up mail response requested)

City: Riverside **Zip:** 92504

Phone #: 951-682-3787

Date: 06-28-2017 **Agenda #** 9.1

PLEASE STATE YOUR POSITION BELOW:

Position on "Regular" (non-appealed) Agenda Item:

Support Oppose Neutral

Note: If you are here for an agenda item that is filed
for "Appeal", please state separately your position on
the appeal below:

Support Oppose Neutral

I give my 3 minutes to: _____

**Riverside County Board of Supervisors
Request to Speak**

Submit request to Clerk of Board (right of podium),
Speakers are entitled to three (3) minutes, subject
Board Rules listed on the reverse side of this form.

SPEAKER'S NAME: Morris Mendoza

Address: 7485 Santa Rosa Way
(only if follow-up mail response requested)

City: Rsdg **Zip:** 92504

Phone #: 354-8875

Date: Jun 28 **Agenda #** 9.1

PLEASE STATE YOUR POSITION BELOW:

Position on "Regular" (non-appealed) Agenda Item:

Support **Oppose** **Neutral**

Arlanza, Casa Blanca, Enside be together

Note: If you are here for an agenda item that is filed
for "Appeal", please state separately your position on
the appeal below:

Support **Oppose** **Neutral**

I give my 3 minutes to: _____

**Riverside County Board of Supervisors
Request to Speak**



Submit request to Clerk of Board (right of podium),
Speakers are entitled to three (3) minutes, subject
Board Rules listed on the reverse side of this form.

SPEAKER'S NAME: CHRISTINA DURAN

Address: 3912 OTTAWA AVE.
(only if follow-up mail response requested)

City: RIV. **Zip:** 92507

Phone #: (951) 312-9890

Date: 6/28/11 **Agenda #** 9.1

PLEASE STATE YOUR POSITION BELOW:

Position on "Regular" (non-appealed) Agenda Item:

Support **Oppose** **Neutral**

Note: If you are here for an agenda item that is filed
for "Appeal", please state separately your position on
the appeal below:

Support **Oppose** **Neutral**

I give my 3 minutes to: _____

✓

**Riverside County Board of Supervisors
Request to Speak**

Submit request to Clerk of Board (right of podium),
Speakers are entitled to three (3) minutes, subject
Board Rules listed on the reverse side of this form.

SPEAKER'S NAME: Morris Mendez

Address: 7485 Santa Rosa
(only if follow-up mail response requested)

City: Esde **Zip:** 92504

Phone #: 951-237-3475 Redistricted

Date: July 12-2011 **Agenda #** 9.1

PLEASE STATE YOUR POSITION BELOW:

Position on "Regular" (non-appealed) Agenda Item:

Support **Oppose** **Neutral**

Note: If you are here for an agenda item that is filed
for "Appeal", please state separately your position on
the appeal below:

Support **Oppose** **Neutral**

I give my 3 minutes to: _____

**Riverside County Board of Supervisors
Request to Speak**



Submit request to Clerk of Board (right of podium),
Speakers are entitled to three (3) minutes, subject
Board Rules listed on the reverse side of this form.

SPEAKER'S NAME: Netta Jones
Delta Sigma Theta Sorority

Address: _____
(only if follow-up mail response requested)

City: _____ **Zip:** _____

Phone #: (909) 243-5991

Date: 07/12/11 **Agenda #** 9.1

PLEASE STATE YOUR POSITION BELOW:

Position on "Regular" (non-appealed) Agenda Item:
 Support X **Oppose** **Neutral**

Note: If you are here for an agenda item that is filed
for "Appeal", please state separately your position on
the appeal below:

 Support **Oppose** **Neutral**

I give my 3 minutes to: _____

**Riverside County Board of Supervisors
Request to Speak**



Submit request to Clerk of Board (right of podium),
Speakers are entitled to three (3) minutes, subject
Board Rules listed on the reverse side of this form.

SPEAKER'S NAME: Mimielle Goulette

Address: Legislative Chave, NAACP
(only if follow-up mail response requested)

City: Riverside **Zip:** 92506

Phone #: (951) 750-7627

Date: _____ **Agenda #** 9.1

PLEASE STATE YOUR POSITION BELOW:

Position on "Regular" (non-appealed) Agenda Item:

_____ **Support** **Oppose** _____ **Neutral**

Note: If you are here for an agenda item that is filed
for "Appeal", please state separately your position on
the appeal below:

_____ **Support** _____ **Oppose** _____ **Neutral**

I give my 3 minutes to: _____

**Riverside County Board of Supervisors
Request to Speak**



Submit request to Clerk of Board (right of podium),
Speakers are entitled to three (3) minutes, subject
Board Rules listed on the reverse side of this form.

SPEAKER'S NAME: Victorina Mandaza

Address: 7485 Santa Rosa Way
(only if follow-up mail response requested)

City: Riverside **Zip:** 92504

Phone #: 951-237-3479

Date: 7-12-11 **Agenda #** 9.1

PLEASE STATE YOUR POSITION BELOW:

Position on "Regular" (non-appealed) Agenda Item:
 Support **Oppose** **Neutral**

Note: If you are here for an agenda item that is filed
for "Appeal", please state separately your position on
the appeal below:

Support **Oppose** **Neutral**

I give my 3 minutes to: _____

**Riverside County Board of Supervisors
Request to Speak**



Submit request to Clerk of Board (right of podium),
Speakers are entitled to three (3) minutes, subject
Board Rules listed on the reverse side of this form.

SPEAKER'S NAME: Cyathia Mendoza-Collins

Address: _____
(only if follow-up mail response requested)

City: Riverside **Zip:** 92503

Phone #: 951-201-2276

Date: 7-12-11 **Agenda #:** 9.1

PLEASE STATE YOUR POSITION BELOW:

Position on "Regular" (non-appealed) Agenda Item:

_____ **Support** _____ **Oppose** _____ **Neutral**

Note: If you are here for an agenda item that is filed
for "Appeal", please state separately your position on
the appeal below:

_____ **Support** _____ **Oppose** _____ **Neutral**

I give my 3 minutes to: _____

**Riverside County Board of Supervisors
Request to Speak**

Submit request to Clerk of Board (right of podium),
Speakers are entitled to three (3) minutes, subject
Board Rules listed on the reverse side of this form.

SPEAKER'S NAME:

OLA FAYE STEPHEN

Address:

2010 CARLTON PL

(only if follow-up mail response requested)

City:

Riverside

zip:

92507

Phone #:

951-684-1072

Date:

7/12/11

Agenda #

9.1

PLEASE STATE YOUR POSITION BELOW:

Position on "Regular" (non-appealed) Agenda Item:

Support **Oppose** **Neutral**

PLANA

Note: If you are here for an agenda item that is filed
for "Appeal", please state separately your position on
the appeal below:

Support **Oppose** **Neutral**

I give my 3 minutes to:

**Riverside County Board of Supervisors
Request to Speak**



Submit request to Clerk of Board (right of podium),
Speakers are entitled to three (3) minutes, subject
Board Rules listed on the reverse side of this form.

SPEAKER'S NAME: Michelle Campbell

Address: _____
(only if follow-up mail response requested)

City: _____ **Zip:** _____

Phone #: 951-780-3877

Date: 7/12/2011 **Agenda #** 9.1

PLEASE STATE YOUR POSITION BELOW:

Position on "Regular" (non-appealed) Agenda Item:

_____ **Support** _____ **Oppose** _____ **Neutral**

Note: If you are here for an agenda item that is filed
for "Appeal", please state separately your position on
the appeal below:

_____ **Support** _____ **Oppose** _____ **Neutral**

I give my 3 minutes to: _____

**Riverside County Board of Supervisors
Request to Speak**



Submit request to Clerk of Board (right of podium),
Speakers are entitled to three (3) minutes, subject
Board Rules listed on the reverse side of this form.

SPEAKER'S NAME: Irma Flores

Address: _____
(only if follow-up mail response requested)

City: Riverside **Zip:** 92501

Phone #: _____

Date: 7/11/11 **Agenda #** 901

PLEASE STATE YOUR POSITION BELOW:

Position on "Regular" (non-appealed) Agenda Item:
_____ **Support** _____ **Oppose** _____ **Neutral**

Note: If you are here for an agenda item that is filed
for "Appeal", please state separately your position on
the appeal below:

_____ **Support** _____ **Oppose** _____ **Neutral**

I give my 3 minutes to: _____

**Riverside County Board of Supervisors
Request to Speak**



Submit request to Clerk of Board (right of podium),
Speakers are entitled to three (3) minutes, subject
Board Rules listed on the reverse side of this form.

SPEAKER'S NAME: TOM SCHULTZ

Address: _____
(only if follow-up mail response requested)

City: RIVERSIDE **Zip:** 92507

Phone #: (951) 680-4403

Date: 7/12/11 **Agenda #** 9.1

PLEASE STATE YOUR POSITION BELOW:

Position on "Regular" (non-appealed) Agenda Item:

_____ **Support** _____ **Oppose** _____ **Neutral**

Note: If you are here for an agenda item that is filed
for "Appeal", please state separately your position on
the appeal below:

_____ **Support** _____ **Oppose** _____ **Neutral**

I give my 3 minutes to: _____

✓

**Riverside County Board of Supervisors
Request to Speak**

Submit request to Clerk of Board (right of podium),
Speakers are entitled to three (3) minutes, subject
Board Rules listed on the reverse side of this form.

SPEAKER'S NAME: Paul Chavez

Address: _____

(only if follow-up mail response requested)

City: Riverside

Zip: 92504

Phone #: 951 682-3787

Date: 07/12/2011

Agenda # 9.1
Redistricting

PLEASE STATE YOUR POSITION BELOW:

Position on "Regular" (non-appealed) Agenda Item:

Support **Oppose** **Neutral**
proposal A

Note: If you are here for an agenda item that is filed
for "Appeal", please state separately your position on
the appeal below:

Support **Oppose** **Neutral**

I give my 3 minutes to: _____

**Riverside County Board of Supervisors
Request to Speak**



Submit request to Clerk of Board (right of podium),
Speakers are entitled to three (3) minutes, subject
Board Rules listed on the reverse side of this form.

SPEAKER'S NAME: Robert Melsh

Address: _____
(only if follow-up mail response requested)

City: Riverside **Zip:** 92507

Phone #: _____

Date: 7-12-11 **Agenda #** A1

PLEASE STATE YOUR POSITION BELOW:

Position on "Regular" (non-appealed) Agenda Item:

Support **Oppose** **Neutral**

Note: If you are here for an agenda item that is filed
for "Appeal", please state separately your position on
the appeal below:

_____ **Support** _____ **Oppose** _____ **Neutral**

I give my 3 minutes to: _____

Riverside County Board of Supervisors
Request to Speak



Submit request to Clerk of Board (right of podium),
Speakers are entitled to three (3) minutes, subject
Board Rules listed on the reverse side of this form.

SPEAKER'S NAME: CHRISTINA DURAN

Address: 3912 OTTAWA AVE
(only if follow-up mail response requested)

City: RIV. **Zip:** 92507

Phone #: _____

Date: 7/12/11 **Agenda #** 9.1

PLEASE STATE YOUR POSITION BELOW:

Position on "Regular" (non-appealed) Agenda Item:

_____ **Support** _____ **Oppose** _____ **Neutral**

Note: If you are here for an agenda item that is filed
for "Appeal", please state separately your position on
the appeal below:

_____ **Support** _____ **Oppose** _____ **Neutral**

I give my 3 minutes to: _____

**Riverside County Board of Supervisors
Request to Speak**



Submit request to Clerk of Board (right of podium),
Speakers are entitled to three (3) minutes, subject
Board Rules listed on the reverse side of this form.

SPEAKER'S NAME: ART GARCIA

Address: 10120 MEDALLION PL
(only if follow-up mail response requested)

City: RIV- **Zip:** 92503-1034

Phone #: (951) 525-0350

Date: 7-12-11 **Agenda #** 9.1

PLEASE STATE YOUR POSITION BELOW:

Position on "Regular" (non-appealed) Agenda Item:

Support **Oppose** **Neutral**

Note: If you are here for an agenda item that is filed
for "Appeal", please state separately your position on
the appeal below:

Support **Oppose** **Neutral**

I give my 3 minutes to: _____