

**SUBMITTAL TO THE BOARD OF SUPERVISORS
COUNTY OF RIVERSIDE, STATE OF CALIFORNIA**

214A



FROM: TLMA - Transportation Dept.

SUBMITTAL DATE:
March 31, 2011

SUBJECT: Landscaping and Lighting Maintenance District No. 89-1-Consolidated,
Annexation of Zone 161 (Glen Valley).

RECOMMENDED MOTION: That the Board adopt the following Resolutions:

Resolution No. 2011-075 a Resolution of the County of Riverside initiating proceedings for the annexation of Zone 161 to Landscaping and Lighting Maintenance District No. 89-1-Consolidated and ordering preparation of the Engineer's Report regarding the proposed annexation of Zone 161.

Resolution No. 2011-076, a Resolution of the County of Riverside declaring its intent to order the annexation of Zone 161 to Landscaping and Lighting Maintenance District No.

Juan C. Perez
Director of Transportation

MH:jp

FORM APPROVED COUNTY COUNSEL
BY: Dale A. Gardner 3/21/11 DATE
DALE A. GARDNER

Departmental Concurrence

FINANCIAL DATA	Current F.Y. Total Cost:	\$0	In Current Year Budget:	N/A
	Current F.Y. Net County Cost:	\$0	Budget Adjustment:	N/A
	Annual Net County Cost:	\$0	For Fiscal Year:	2010-11
SOURCE OF FUNDS: Landscaping and Lighting Maintenance District No. 89-1-Consolidated – 100%				Positions To Be Deleted Per A-30 <input type="checkbox"/>
				Requires 4/5 Vote <input type="checkbox"/>

C.E.O. RECOMMENDATION:

APPROVE

BY:
Tina Grande

County Executive Office Signature

MINUTES OF THE BOARD OF SUPERVISORS

On motion of Supervisor Stone, seconded by Supervisor Ashley and duly carried by unanimous vote, IT WAS ORDERED that the above resolutions are adopted as recommended, and that the matter is set for public hearing on Tuesday, June 7, 2011, at 9:30 a.m.

Ayes: Buster, Tavaglione, Stone, Benoit and Ashley
Nays: None
Absent: None
Date: April 12, 2011
xc: bll 1: rre Transp., COB(2)

Kecia Harper-Ihem
Clerk of the Board
By:
Deputy

Prev. Agn. Ref. | **District: 1** | **Agenda Number:**

3.23

ATTACHMENTS FILED
WITH THE CLERK OF THE BOARD

Policy
 Policy
 Consent
 Consent
 Dept Recomm.:
 Per.Exec. Ofc.:

The Honorable Board of Supervisors

RE: Landscaping and Lighting Maintenance District No. 89-1-Consolidated, Annexation of Zone 161 (Glen Valley).

March 31, 2011

Page 2 of 3

89-1-Consolidated of the County of Riverside pursuant to the Landscaping and Lighting Act of 1972 for the maintenance and servicing of landscaping, traffic signals, and future median landscaping, and the provision of electricity for traffic signals; adopting the preliminary engineer's report; giving notice of and setting the time and place of the public hearing on the annexation of Zone 161, ordering a mailed ballot election; and directing notice of the public hearing and ballot be mailed pursuant to Article XIID of the California Constitution.

BACKGROUND: Adoption of Resolution No. 2011-075 appoints the Director of the Transportation Department as the Engineer to prepare a Report regarding the proposed annexation of Zone 161 to Landscaping and Lighting Maintenance District No. 89-1-Consolidated ("L&LMD No. 89-1-C").

Resolution No. 2011-076 declares the Board's intention of ordering the annexation of Zone 161 to L&LMD No. 89-1-C. Annexation of Zone 161 to L&LMD No. 89-1-C will fund the maintenance and servicing of landscaping, traffic signals, and future median landscaping, and the provision of electricity for traffic signals within public right-of-way located northerly of Cajalco Rd and at the intersection of Cajalco Rd and Wood Rd in the Glen Valley area and includes 8 commercial parcels, totaling 14.99 acre(s).

The proposed budget for fiscal year 2011-12 for Zone 161 is \$5,460 that will result in an assessment for fiscal year 2011-12 within Zone 161 of \$364.22 per acre. The annual assessment will be adjusted annually by the greater of 2% or the cumulative percentage increase in the CPI-U, if any, as it stands as of March of each year over the base index for March of 2011.

In addition to the Standard Annual Adjustment, beginning in the fiscal year in which the future median improvements on Cajalco Rd are completed, the annual assessments may be further increased. For the fiscal year in which the future median improvements are completed, the annual assessment may be increased by \$65.06 which will result in an aggregate assessment of \$429.28 per acre, adjusted for inflation. The Standard Annual Adjustment will be applied to this increased assessment in all subsequent fiscal years following the year in which the future median improvements on Cajalco Rd are completed. Under the proposed annexation, neither the assessment increases based on the Standard Annual Adjustment nor the further increases associated with the completion of the future median improvements on Cajalco Rd will require any further approval of the landowners within Zone 161.

Consistent with the Board's direction regarding compliance with Article XIID of the California Constitution and the Landscaping and Lighting Act of 1972, the attached resolutions have been prepared and a public hearing scheduled for 9:30 a.m. on June 7, 2011 to receive testimony for and against the proposed assessment. Each property owner within the proposed Zone 161 will receive a notice of the public hearing and mail-in ballot, an impartial analysis, a copy of Resolution No. 2011-076, and an information sheet.

Ballots must be returned prior to the conclusion of the public hearing. If, at the time designated for the tabulation of the ballots, the ballots submitted in favor of the annexation and levy of the assessment exceed the ballots submitted in opposition of said annexation and levy, Zone 161 will be annexed to L&LMD No. 89-1-C.

The Honorable Board of Supervisors

RE: Landscaping and Lighting Maintenance District No. 89-1-Consolidated, Annexation of
Zone 161 (Glen Valley).

March 31, 2011

Page 3 of 3

There is only one individual/entity which owns all of the property within the proposed boundaries of Zone 161 and said property owner has executed a "Waiver and Consent Regarding Date of Assessment Ballot Election" allowing for the election and public hearing to be held on June 7, 2011.

RESOLUTION NO. 2011-075

RESOLUTION OF THE BOARD OF SUPERVISORS OF THE COUNTY OF RIVERSIDE INITIATING PROCEEDINGS FOR THE ANNEXATION OF ZONE 161 TO LANDSCAPING AND LIGHTING MAINTENANCE DISTRICT NO. 89-1-CONSOLIDATED OF THE COUNTY OF RIVERSIDE PURSUANT TO THE LANDSCAPING AND LIGHTING ACT OF 1972 AND ORDERING PREPARATION OF ENGINEER'S REPORT REGARDING SAID ANNEXATION

WHEREAS, the Board of Supervisors (hereinafter the "Board of Supervisors") of the County of Riverside (hereinafter the "County") has been advised by the Transportation Department (hereinafter "Department") of the County that said Department has received an application from the owner (the "Applicant") of all the property within the unincorporated area of the County (hereinafter "Zone 161"), as shown and described in Exhibit "A", which is attached hereto and made a part hereof, to be annexed to Landscaping and Lighting Maintenance District No. 89-1-Consolidated (hereinafter "L&LMD No. 89-1-C") of the County of Riverside, State of California, and the Board of Supervisors has determined that it is necessary and desirable to initiate proceedings for the annexation of Zone 161 to L&LMD No. 89-1-C pursuant to the Landscaping and Lighting Act of 1972, Part 2 (commencing with Section 22500) of Division 15 of the Streets and Highways Code (hereinafter, respectively, the "Act" and the "Street and Highways Code"); and

WHEREAS, such proceedings shall comply with the requirements of Article XIID of the California Constitution and Section 4000 of the Elections Code requiring voter approval of the proposed assessment to be levied by L&LMD No. 89-1-C for Zone 161; and

WHEREAS, the Applicant has executed a "Waiver and Consent Regarding Date of Assessment Ballot Election" allowing for the election to be held on June 7, 2011; and

WHEREAS, the Director of the Department, or his designee, is a licensed and registered civil engineer, has expertise with respect to the annexation of territory to landscaping and lighting maintenance districts and the levying of assessments for said purposes and, therefore, is able to serve

UNOFFICIAL COPY
BY Dale A. Gardner 5/21/11
DALE A. GARDNER DATE

1 as the engineer (hereinafter the "Engineer") for the County with regard to the annexation of Zone 161
2 to L&LMD No. 89-1-C.

3 **NOW, THEREFORE, BE IT RESOLVED, FOUND, DETERMINED AND ORDERED** by the
4 Board of Supervisors of the County of Riverside assembled in regular session on April 12, 2011 as
5 follows:

6 **Section 1. Recitals.** The Board of Supervisors hereby finds and determines that all
7 the above recitals are true and correct.

8 **Section 2. Annexation.** The Board of Supervisors proposes to annex Zone 161 to
9 L&LMD No. 89-1-C and to initiate and conduct proceedings therefore pursuant to the Act for the
10 purpose of levying an annual assessment on all parcels within Zone 161 to pay the costs of the
11 following services:

- 12 (a) The maintenance and servicing of landscaping within the public right-of-way
13 including the trimming, fertilizing, weeding and replanting of trees, shrubs, grass,
14 and other ornamental vegetation; and
- 15 (b) The maintenance and servicing of irrigation and electrical facilities associated
16 with the landscaping, including but not limited to electricity for operation of the
17 irrigation system and water for irrigation; and
- 18 (c) Providing electricity to and the maintenance and servicing of traffic signals within
19 the public right-of-way including incidental costs and expenses.

20 **Section 3. Boundaries and Designation.** The boundaries of Zone 161 that are
21 proposed to be annexed to L&LMD No. 89-1-C shall include all of the property as shown and
22 described in Exhibit "A".

23 **Section 4. Report.** The Director of the Department of the County, or his designee,
24 is hereby designated Engineer and is ordered to prepare and file a report with the Clerk of the Board
25 of Supervisors in accordance with Sections 22608 and 22585 et. seq. of the Streets and Highways
26

1 Code and Section 4 of Article XIID of the California Constitution regarding said annexation and the
2 levy.

3 **Section 5. Effective Date.** This Resolution shall take effect from and after its date
4 of adoption.

7 ROLL CALL:

8 Ayes: Buster, Tavaglione, Stone, Benoit, and Ashley
9 Nays: None
9 Absent: None

10 The foregoing is certified to be a true copy of a resolution duly
11 adopted by said Board of Supervisors on the date therein set forth.

12 KECIA HARPER-IHEM, Clerk of said Board
13 By: _____
14 Deputy

15
16
17
18
19
20
21
22
23
24
25
26

EXHIBIT "A"

DESCRIPTION OF BOUNDARIES

The boundaries of Zone 161 to be annexed into Landscaping and Lighting Maintenance District No. 89-1-Consolidated, of the County of Riverside, are coterminous with the boundaries of 8 parcels as shown on Parcel Map No. 36124 in the County of Riverside, State of California for fiscal year 2011-12.

- 1
- 2
- 3
- 4
- 5
- 6
- 7
- 8
- 9
- 10
- 11
- 12
- 13
- 14
- 15
- 16
- 17
- 18
- 19
- 20
- 21
- 22
- 23
- 24

LANDSCAPING AND LIGHTING MAINTENANCE DISTRICT NO. 89-1-CONSOLIDATED

ZONE 161

PORTION OF SECTION 8, T.4S., R.4W.

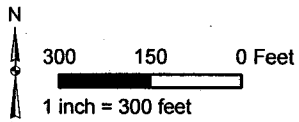
PARCEL MAP NO. 36124

8 PARCELS

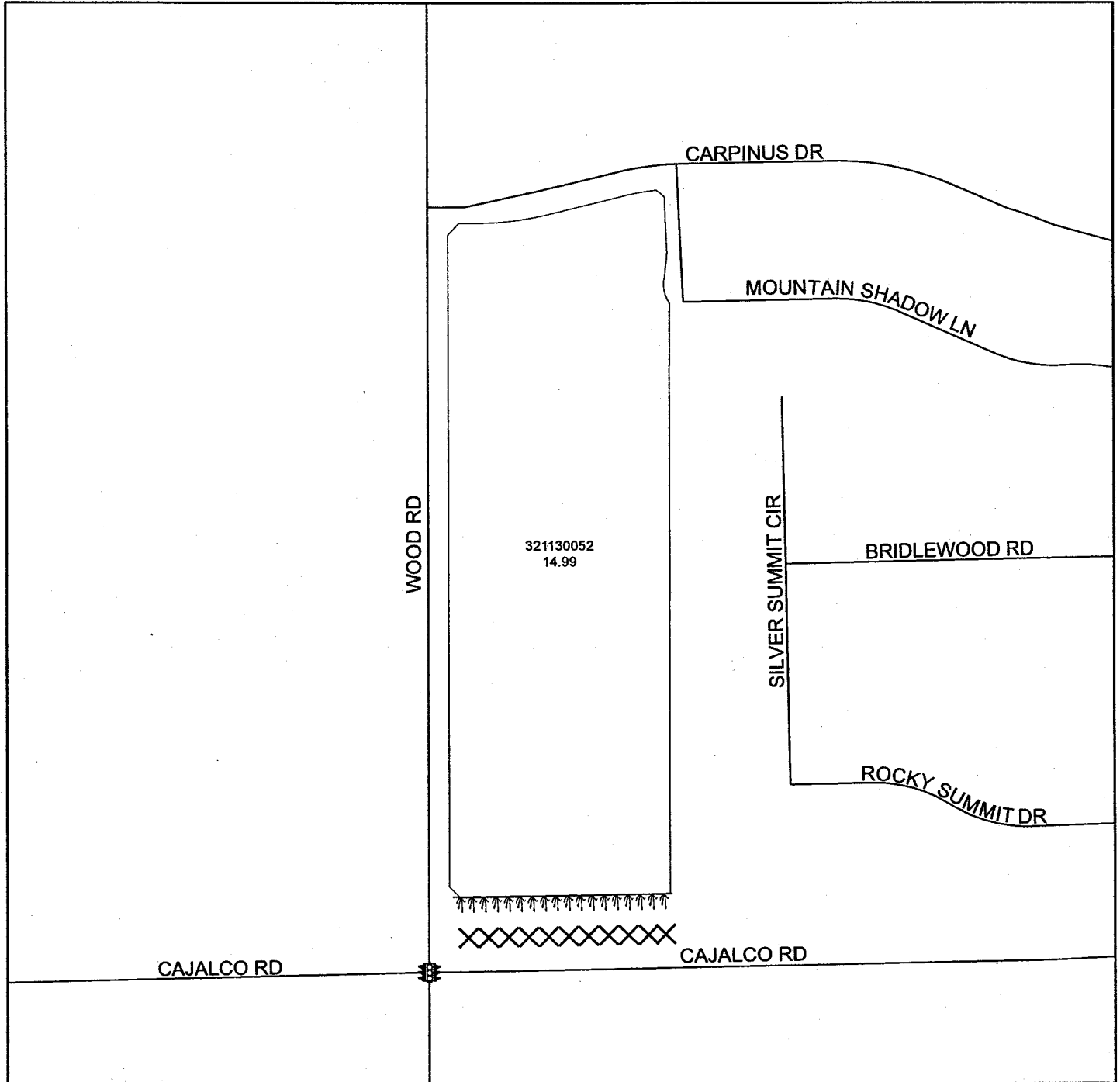


The County of Riverside assumes no warranty or legal responsibility for the information contained on this map. Data and information represented on this map is subject to updates, modifications and may not be complete or appropriate for all purposes. County GIS and other sources should be queried for the most current information. Do not copy or resell this map.

Printed by jpickeri on 3/16/11



ASSESSMENT DIAGRAM



DENOTES LANDSCAPED AND MAINTAINED PARKWAY

DENOTES FUTURE LANDSCAPED AND MAINTAINED MEDIAN

DENOTES MAINTAINED TRAFFIC SIGNAL

2 RESOLUTION NO. 2011-076

3 RESOLUTION OF THE BOARD OF SUPERVISORS OF THE COUNTY OF RIVERSIDE DECLARING
4 ITS INTENT TO ORDER THE ANNEXATION OF ZONE 161 TO LANDSCAPING AND LIGHTING
5 MAINTENANCE DISTRICT NO. 89-1-CONSOLIDATED OF THE COUNTY OF RIVERSIDE
6 PURSUANT TO THE LANDSCAPING AND LIGHTING ACT OF 1972 FOR THE MAINTENANCE
7 AND SERVICING OF LANDSCAPING, TRAFFIC SIGNALS, AND FUTURE MEDIAN; ADOPTING
8 THE PRELIMINARY ENGINEER'S REPORT; GIVING NOTICE OF AND SETTING THE TIME AND
9 PLACE OF THE PUBLIC HEARING ON THE ANNEXATION OF ZONE 161; ORDERING AN
10 ASSESSMENT PROCEEDING; ORDERING A MAILED BALLOT ELECTION; AND DIRECTING
11 NOTICE OF THE PUBLIC HEARING AND THE ASSESSMENT BALLOT TO BE MAILED
12 PURSUANT TO ARTICLE XIID OF THE CALIFORNIA CONSTITUTION AND SECTION 4000 OF
13 THE ELECTIONS CODE

14 WHEREAS, the Board of Supervisors (hereinafter the "Board of Supervisors") of the County of
15 Riverside (hereinafter the "County") has adopted Resolution No. 2011-075 on April 12, 2011 initiating
16 proceedings for the annexation of Zone 161 (hereinafter "Zone 161"), as described and shown in
17 Exhibit "A", which is attached hereto and incorporated herein, to Landscaping and Lighting
18 Maintenance District No. 89-1-Consolidated of the County of Riverside, State of California, (hereinafter
19 "L&LMD No. 89-1-C") pursuant to the Landscaping and Lighting Act of 1972 (hereinafter the "Act"),
20 which is Part 2 (commencing with Section 22500) of Division 15 of the Streets and Highways Code
21 (hereinafter the "Street and Highways Code"), and ordering the preparation of a report (hereinafter the
22 "Report") regarding the proposed annexation of Zone 161 and the assessments to be levied within
23 Zone 161 each fiscal year beginning fiscal year 2011-12 for the the maintenance and servicing of
24 landscaping, traffic signals, and future median landscaping, and the provision of electricity for traffic
25 signals within the public right-of-way within said Zone; and

26 WHEREAS, such proceedings shall comply with the requirements of Article XIID of the
California Constitution (hereinafter "Article XIID:"); the Act, and Section 4000 of the Elections Code
requiring voter approval of the proposed assessment to be levied by L&LMD No. 89-1-C for Zone 161;
and

FOR THE APPROVED COUNTY COUNCIL
BY Dale A. Gardner 3/21/11 DATE
DALE A. GARDNER

1 **WHEREAS**, the Board of Supervisors by Resolution No. 2011-075 directed the Director of the
2 Transportation Department, or his designee (hereinafter the "Engineer"), to prepare and file the Report
3 with the Clerk of the Board of Supervisors in accordance with Sections 22608 and 22585 et. seq. of the
4 Street and Highways Code and Section 4 of Article XIIID; and

5 **WHEREAS**, said Engineer has filed the Report with the Clerk of the Board of Supervisors and
6 the Report has been presented to and considered by the Board of Supervisors; and

7 **WHEREAS**, the Applicant has executed a "Waiver and Consent Regarding Date of
8 Assessment Ballot Election" allowing for the election to be held on June 7, 2011; and

9 **WHEREAS**, it is necessary that the Board of Supervisors adopt a resolution of intention
10 pursuant to Section 22624 of the Streets and Highways Code, which fixes and gives notice, pursuant to
11 Section 22626 of the Streets and Highways Code, of the time and place of a public hearing on said
12 Report, the annexation of Zone 161, and the assessments to be levied on parcels within Zone 161
13 beginning in fiscal year 2011-12;

14 **NOW, THEREFORE, BE IT RESOLVED, FOUND, DETERMINED AND ORDERED** by the
15 Board of Supervisors in regular session assembled on April 12, 2011 as follows:

16 **Section 1. Findings.** The Board of Supervisors, after reviewing the Report, finds that:

- 17 (a) The foregoing recitals are true and correct;
- 18 (b) The Report contains all matters required by Sections 22565 through 22574 of the
19 Streets and Highways Code and Section 4 of Article XIIID and may, therefore, be
20 approved by the Board of Supervisors;
- 21 (c) The annual assessment for fiscal year 2011-12 on all parcels within Zone 161 proposed
22 to be annexed to L&LMD No. 89-1-C will be \$364.22 per acre.
- 23 (d) Beginning in the fiscal year in which the future median improvements on Cajalco Rd are
24 completed, the annual assessment and all subsequent annual assessments will be
25 increased accordingly. The annual assessment may be increased by \$65.06 which will
26 result in an aggregate assessment of \$429.28 per acre, adjusted for inflation, in the

1 fiscal year in which the future median improvements on Cajalco Rd are completed as
2 detailed in the Report. Subsequent annual assessments will be increased, without
3 regard to the \$429.28 per acre ceiling, in accordance with the standard annual
4 adjustment formula outlined in Section 5 of this Resolution.

5 **Section 2. Intent.** The Board of Supervisors hereby declares its intention to order the
6 annexation of Zone 161, as described and shown in Exhibit "A", to L&LMD No. 89-1-C, and to levy and
7 collect an annual assessment on all assessable lots and parcels of property within Zone 161
8 commencing with the fiscal year 2011-12 as set forth in the Report. The Report expressly states that
9 there are no parcels or lots within Zone 161 that are owned by a federal, state or other local
10 governmental agency that will benefit from the services to be financed by the annual assessments. The
11 annual assessments will be collected at the same time and in the same manner as property taxes are
12 collected, and all laws providing for the collection and enforcement of property taxes shall apply to the
13 collection and enforcement of said assessments.

14 **Section 3. Boundaries.** All the property within boundaries of Zone 161 is proposed to be
15 annexed into L&LMD No. 89-1-C and shall include that property in the unincorporated area of the
16 County as described and shown in Exhibit "A".

17 **Section 4. Description of Services to be Provided.** The maintenance and servicing of
18 landscaping, traffic signals, and future median landscaping, and the provision of electricity for traffic
19 signals authorized for Zone 161 of L&LMD No. 89-1-C are:

- 20 (a) The maintenance and servicing of landscaping within the public right-of-way including
21 the trimming, fertilizing, weeding and replanting of trees, shrubs, grass, and other
22 ornamental vegetation; and
23 (b) The maintenance and servicing of irrigation and electrical facilities associated with the
24 landscaping, including but not limited to electricity for operation of the irrigation system
25 and water for irrigation; and
26

1 (c) Providing electricity to and the maintenance and servicing of traffic signals within the
2 public right-of-way including incidental costs and expenses.

3 **Section 5. Amount to be Levied.** The assessment to be levied upon each parcel that benefits from
4 the annexation of Zone 161 to L&LMD No. 89-1-C will be \$364.22 per acre for fiscal year 2011-12. As
5 stated in the Report, the total budget for Zone 161 for the fiscal year 2011-12 is \$5,460.00; there are 8
6 parcels that are to be assessed. The annual assessment will be increased by the greater of two percent
7 (2.0%) or the cumulative percentage increase, if any, in the Consumer Price Index for all Urban
8 Consumers ("CPI-U") for the Los Angeles-Riverside-Orange County California Standard Metropolitan
9 Statistical area ("Index") published by the Bureau of Labor Statistics of the United States Department of
10 Labor. The annual CPI-U adjustment will be based on the cumulative increase, if any, in the Index as it
11 stands on March of each year over the base Index for March of 2011. The annual assessment increase
12 derived from the application of the foregoing formula is referred to as the "Standard Annual
13 Adjustment." In addition to the Standard Annual Adjustment, beginning in the fiscal year in which the
14 future median improvements on Cajalco Rd are completed, the annual assessments may be further
15 increased. For the fiscal year in which the future median improvements are completed, the annual
16 assessment may be increased by \$65.06 which will result in an aggregate assessment of \$429.28 per
17 acre, adjusted for inflation. The Standard Annual Adjustment will be applied to this increased
18 assessment in all subsequent fiscal years following the year in which the future median improvements
19 on Cajalco Rd are completed without regard to the \$429.28 per acre, inflation adjusted, assessment
20 ceiling required during the fiscal year the future median improvements were first completed. Except for
21 assessment increases associated with the completion of the future median improvements on Cajalco
22 Rd, and assessment increases resulting from the application of the Standard Annual Adjustment, any
23 other increase in the annual assessment requires a majority approval of all the property owners within
24 Zone 161. The Board of Supervisors will levy the assessment in each subsequent fiscal year until the
25 Board of Supervisors undertakes proceedings for the dissolution of Zone 161 of L&LMD No. 89-1-C.
26 The annual assessment will fund the services described in Section 4 of this Resolution. For further
particulars, reference is to be made to the Report on file in the Office of the Clerk of the Board of
Supervisors.

1 **Section 6. The Property to be Annexed.** The property to be annexed into L&LMD No.
2 89-1-C is Zone 161. The boundaries of Zone 161 are located within the unincorporated area of the
3 County and are described and shown in the Report and Exhibit "A".

4 **Section 7. Report.** The Report, which is on file with the Clerk of the Board of Supervisors
5 and which has been presented to the Board of Supervisors, is hereby approved. Reference is made to
6 the Report for a full and detailed description of the services, the boundaries of Zone 161, and the
7 annual assessment to be levied upon assessable lots and parcels within Zone 161 proposed to be
8 annexed to L&LMD No. 89-1-C.

9 **Section 8. Public Hearing.** The question of whether Zone 161 shall be annexed into
10 L&LMD No. 89-1-C and an annual assessment levied beginning with fiscal year 2011-12 shall be
11 considered at a public hearing (hereinafter the "Public Hearing") to be held on June 7, 2011, at 9:30
12 a.m. at the meeting room of the Board of Supervisors of the County at 4080 Lemon Street, 1st Floor,
13 Riverside, California.

14 **Section 9. Majority Protest.** Each owner of record of property within Zone 161 is to receive
15 by mail an assessment ballot that shall conform to the requirements of Section 4 of Article XIID and
16 Section 4000 of the California Elections Code. The assessment ballots are to be returned prior to the
17 Public Hearing. L&LMD No. 89-1-C shall not impose assessments on property within the boundaries of
18 Zone 161 if there is a majority protest with regard to the annexation of Zone 161. A majority protest
19 exists if, upon the conclusion of the Public Hearing, the tabulation of the assessment ballots submitted
20 in opposition to the annexation and assessment of Zone 161 exceeds the assessment ballots in favor
21 of the annexation and assessment of Zone 161.

22 **Section 10. Information.** Any property owner desiring additional information regarding
23 Zone 161 of L&LMD No. 89-1-C, the Report, or the proposed assessment is to contact Ms. Joan
24 Pickering, Engineering Technician II, Transportation Department of the County of Riverside, 4080
25 Lemon Street, 8th Floor, Riverside, California, 92501 or by telephone at 951-955 6748.
26

1 **Section 11. Notice of the Public Hearing.** Notice of Public Hearing with regard to the
2 annexation of Zone 161 to L&LMD No. 89-1-C shall be given consistent with Section 22626 of the
3 Streets and Highways Code and Section 4 of Article XIID. The Clerk of the Board of Supervisors shall
4 give notice of the Public Hearing by causing a certified copy of this Resolution to be published once in
5 an appropriate newspaper at least ten (10) days prior to the date of the Public Hearing that is June 7,
6 2011. Publication of this Resolution is to be effected by the Clerk of the Board of Supervisors. Notice
7 shall also be given by mailing first-class, postage prepaid, those notices, as prepared by County
8 Counsel, assessment ballot and information sheets as required by Section 4 of Article XIID and
9 Section 4000 of the California Elections Code to all owners of record of property within Zone 161 as
10 shown on the last equalized assessment roll of the County. Mailing is to be made by the Engineer and
11 deposited with the U. S. Post Office at least forty-five (45) days prior to the Public Hearing on June 7,
12 2011.

13 **Section 12. Effective Date.** This Resolution shall take effect from and after its date of
14 adoption.

15
16 **ROLL CALL:**

17 Ayes: Buster, Tavaglione, Stone, Benoit, and Ashley
18 Nays: None
19 Absent: None

20 The foregoing is certified to be a true copy of a resolution duly
21 adopted by said Board of Supervisors on the date therein set forth.

22 KECIA HARPER-IHEM, Clerk of said Board

23 By: _____
24 Deputy

EXHIBIT "A"

DESCRIPTION OF BOUNDARIES

The boundaries of Zone 161 to be annexed into Landscaping and Lighting Maintenance District No. 89-1-Consolidated, of the County of Riverside, are coterminous with the boundaries of 8 parcels as shown on Parcel Map No. 36124 in the County of Riverside, State of California for fiscal year 2011-12.

1
2
3
4
5
6
7
8
9
10
11
12
13
14
15
16
17
18
19
20
21
22
23
24

LANDSCAPING AND LIGHTING MAINTENANCE DISTRICT NO. 89-1-CONSOLIDATED

ZONE 161

PORTION OF SECTION 8, T.4S., R.4W.

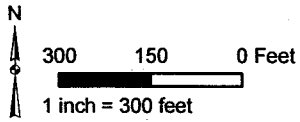
PARCEL MAP NO. 36124

8 PARCELS

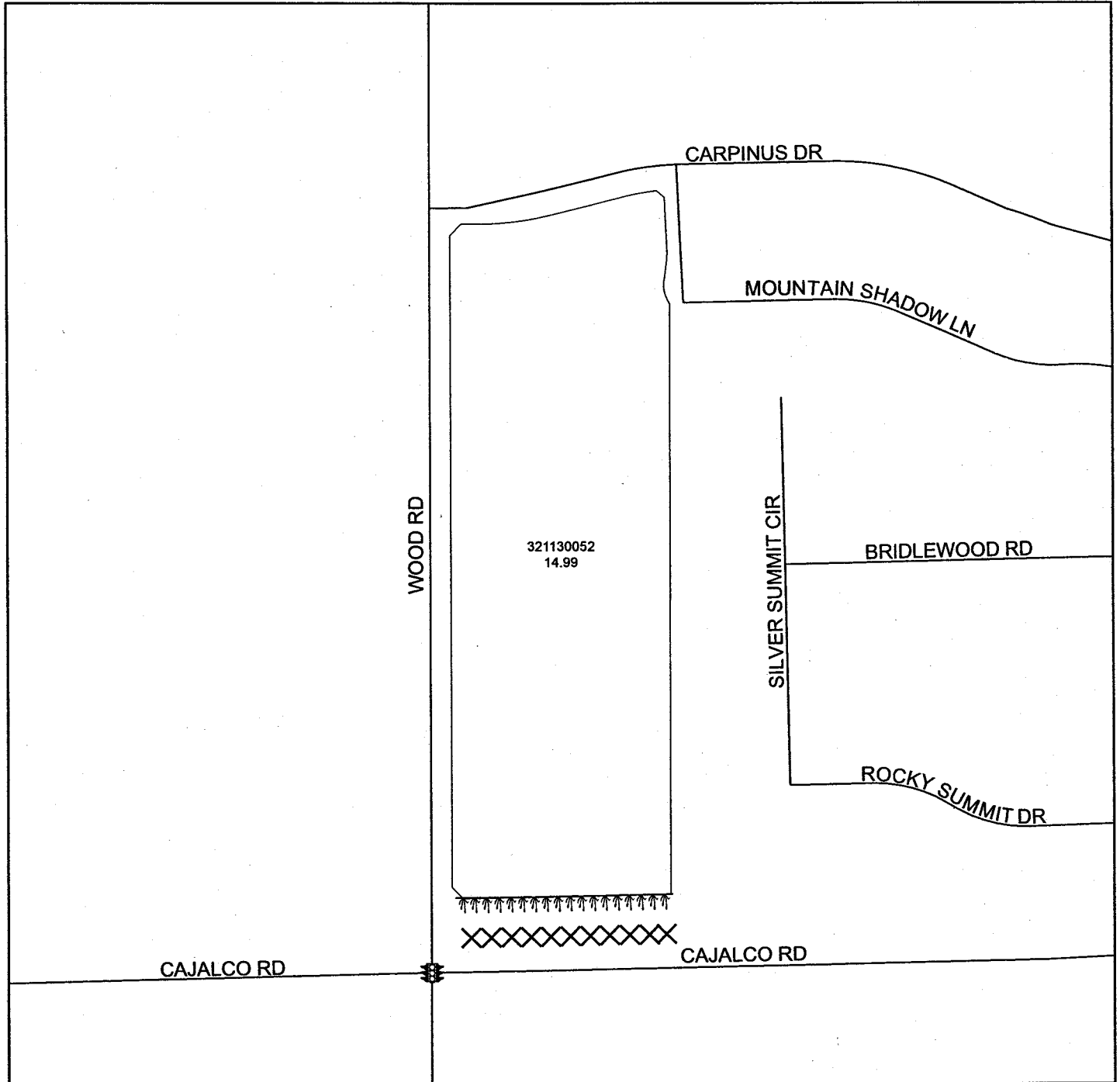


The County of Riverside assumes no warranty or legal responsibility for the information contained on this map. Data and information represented on this map is subject to updates, modifications and may not be complete or appropriate for all purposes. County GIS and other sources should be queried for the most current information. Do not copy or resell this map.

Printed by jpickeri on 3/16/11



ASSESSMENT DIAGRAM



DENOTES LANDSCAPED AND MAINTAINED PARKWAY

DENOTES FUTURE LANDSCAPED AND MAINTAINED MEDIAN

DENOTES MAINTAINED TRAFFIC SIGNAL