

## APPENDIX "B"

### PROJECT SIGN

8'-0"

6'-0"  
1'-0"  
1'-3"  
1'-9"  
2'-0"

RIVERSIDE COUNTY FLOOD CONTROL  
AND  
WATER CONSERVATION DISTRICT ①

PALM CANYON WASH  
ARENAS LEVEE RESTORATION ②  
STAGE 92

TOTAL CONSTRUCTION COST: \$ ✕ ③  
FUNDED BY RIVERSIDE COUNTY FLOOD CONTROL AND  
WATER CONSERVATION DISTRICT ④

START DATE: ✕ ④ APPROX. COMPLETION DATE: ✕

ENGINEER:

WARREN D. WILLIAMS  
GENERAL MANAGER-CHIEF ENGINEER ⑤  
RIVERSIDE COUNTY FLOOD CONTROL  
AND WATER CONSERVATION DISTRICT  
RIVERSIDE, CALIFORNIA  
(951) 955-1200

④ CONTRACTOR:

✕

3/4" CDX GRADE  
PLYWOOD

LETTER SCHEDULE

	SIZE	COLOR
①	2"	BLACK
②	4"	ROYAL
③	3"	ROYAL
④	2"	ROYAL
⑤	2"	BLACK

6x6 POSTS SHALL  
BE BURIED 3' MINIMUM  
WITH 5' FROM GROUND  
TO BOTTOM OF SIGN

NOTES:

1. MINIMUM SPACING BETWEEN LINES 1".
2. ✕ -INFO. FURNISHED BY ENGINEER
3. ALL LETTERS FILLED AND CENTERED
4. THE STRIPES ARE GOLD AND BLACK ON WHITE BACKGROUND.

APPENDIX "B" PROJECT SIGN

## APPENDIX "C"

### LOG OF SOIL BORINGS







GeoTek, Inc.  
LOG OF EXPLORATORY BORING

CLIENT: Note  
PROJECT NAME: Riverside County Flood Levees  
PROJECT NO.: 0387-CR3  
LOCATION: ±Station 70+00

DRILLER: 2R Drilling  
DRILL METHOD: 8" Hollow Stem  
HAMMER: Auto 140#/30"

LOGGED BY: FA  
OPERATOR: Jeff  
RIG TYPE: CME 66  
DATE: 12/4/2007

DATE: 12/14/2007								
Depth (ft)	SAMPLES			USCS Symbol	Palm Canyon Wash Levee, North Side	Laboratory Testing		
	Sample Type	Blows/ 6 in	Sample Number		BORING NO.: B-2	Water Content (%)	Dry Density (pcf)	Others
				SW	<u>FILL:</u> Gravelly fine to coarse SAND (SW), medium brown, moist, medium dense, gravels fine to coarse grained			
5		17 48 47		SM	Gravelly silty SAND (SM), light brown, slightly moist, medium dense, gravels fine to coarse grained	1.5	123.7	
		13 12 14			Silty fine to coarse SAND (SM), light brown, slightly moist, medium dense, few pebbles and cobbles			
		26 50/6"			Silty fine to coarse SAND (SM), light brown, moist, medium dense, few fine gravels	3.1	116.0	
10		6 12 10		SW	fine to medium SAND (SW), light brown, slightly moist, medium dense, few gravels			SA
		16 32 46			fine to coarse SAND (SW), light brown, moist, medium dense	4.6	125.3	SH
15		5 3 3		SW	<u>ALLUVIUM:</u> fine to medium SAND (SW) with fine to coarse gravels, light brown, damp, loose			SA
		3 6 12			fine to coarse SAND (SW), grayish brown, moist, medium dense	3.9	111.5	SH
20		2 3 4		SP	Coarse to fine SAND (SP), light brown, slightly moist, loose, few fine gravels			
					BORING TERMINATED AT 21.5 FEET			
					No groundwater encountered Boring backfilled with soil cuttings			
25								
30								

LEGEND	Sample type:	 Ring	 SPT	 Small Bulk	 Large Bulk	 No Recovery	 Water Table	
	Lab testing:	AL = Atterberg Limits	SR = Sulfate Resistivity Test	EI = Expansion Index	SH = Shear Test	SA = Sieve Analysis	HC = Hydrocollapse	RV = R-Value Test

LEGEND

Sample type:



—Ring



—SPT



—Small Bulk



—Large Bulk



—No Recovery



—Water Table

Lab testing:

AL = Atterberg Limits

EI = Expansion Index

SA = Sieve Analysis

RV = R-Value Test

SR = Sulfate Resistivity Test

SH = Shear Test

HC = Hydrocollapse

MD = Maximum Density

**GeoTek, Inc.**

LOGGED BY: FA  
OPERATOR: Jeff  
RIG TYPE: CME 55  
DATE: 12/4/2007

### LEGEND

**GeoTek, Inc.**  
**LOG OF EXPLORATORY BORING**

CLIENT: Notte  
PROJECT NAME: Riverside County Flood Levees  
PROJECT NO.: 0387-CR3  
LOCATION: ±Station 39+40

DRILLER: 2R Drilling  
DRILL METHOD: 8" Hollow Stem  
HAMMER: Auto 140#/30"

LOGGED BY: FA  
OPERATOR: Jeff  
RIG TYPE: CME 55  
DATE: 12/4/2007

Depth (ft)	SAMPLES			USCS Symbol	Palm Canyon Wash Levee, North Side  BORING NO.: B-4  MATERIAL DESCRIPTION AND COMMENTS	Laboratory Testing		
	Sample Type	Blows/ft	Sample Number			Water Content (%)	Dry Density (pcf)	Others
11				SW	<u>FILL:</u> Fine to coarse SAND (SW) with gravels, grayish brown, moist, medium dense	1.0	113.4	SA
15					Fine to coarse SAND (SW) with gravels, grayish brown, damp, medium dense			
20								
5					Fine to coarse SAND (SW) with some gravel, grayish brown, damp, medium dense			
					Gravelly fine to coarse SAND (SW), light brown, damp, medium dense	1.2	118.1	
45								
42								
					<u>ALLUVIUM:</u> Gravelly coarse SAND (SW), light brown, damp, loose, gravels fine to coarse grained			PERM
10				SW				
					Gravelly coarse SAND (SW), light brown, damp, medium dense, gravels fine to coarse grained			
15				SP	Fine to coarse SAND (SP) with gravels, light brown, damp, medium dense, gravel fine grained			
					<b>BORING TERMINATED AT 16.5 FEET</b>			
					No groundwater encountered Boring backfilled with soil cuttings			
20								
25								
30								

<b>LEGEND</b>	Sample type:		—Ring		—SPT		—Small Bulk		—Large Bulk		—No Recovery		—Water Table
	Lab testing:	AL = Atterberg Limits			EI = Expansion Index			SA = Sieve Analysis			RV = R-Value Test		
	SR = Sulfate/Resistivity Test			SH = Shear Test			HC = Hydrocollapse			MD = Maximum Density			





**Explanation**

B-19 Approximate boring location

Cross section

0+00 Station number

South Levee alignment

North Levee alignment

**Note:**  
All boring locations are approximate.





# RIVERSIDE COUNTY FLOOD CONTROL AND WATER CONSERVATION DISTRICT

## INDEX

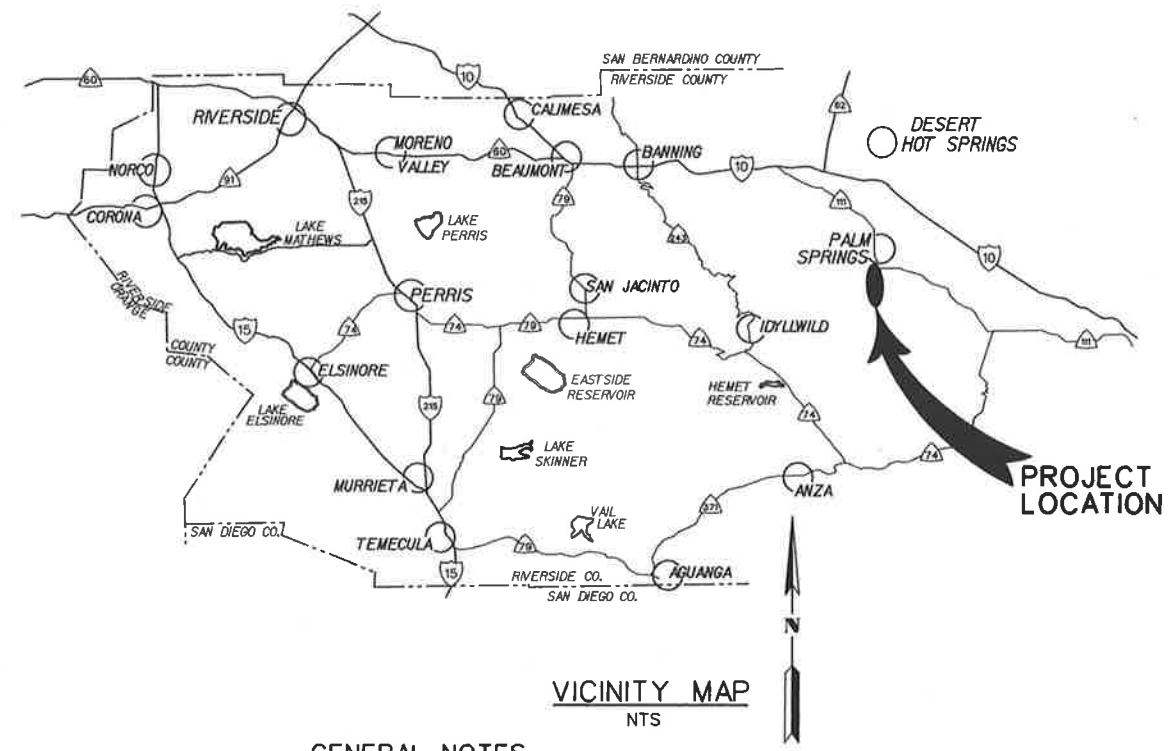
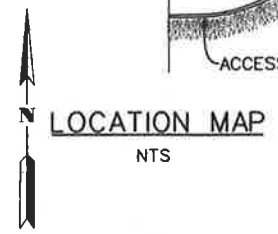
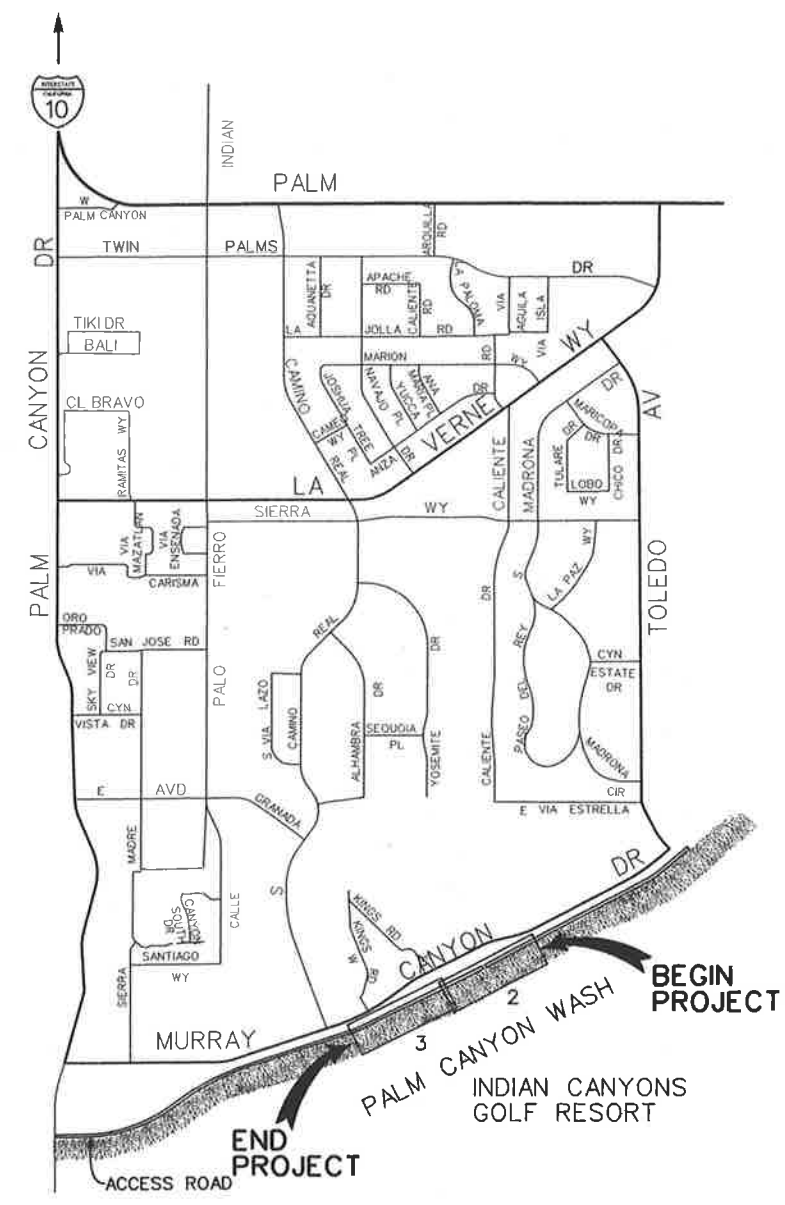
TITLE SHEET  
PLAN & PROFILE  
ACCESS RAMP DETAILS  
MISCELLANEOUS DETAILS

## R.C.F.C. & W.C.D. STANDARD DRAWINGS

M814 ABBREVIATIONS AND SYMBOLS  
M815 BEDDING AND PAY LINES

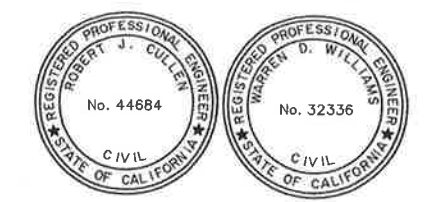
## COUNTY ROAD IMPROVEMENT STANDARD

200 TYPE A-6 CURB



## GENERAL NOTES

1. BEDDING AND PAYLINES ARE SHOWN ON RCFC STANDARD DRAWING M815 UNLESS SHOWN OTHERWISE ON THESE PLANS.
2. ALL STATIONING REFERS TO CENTERLINE OF CONSTRUCTION.
3. ALL CHANNEL/STORM DRAIN REFERENCES AND CROSS SECTIONS ARE TAKEN LOOKING DOWNSTREAM.
4. TOPOGRAPHY BY DIGITAL PHOTOGRAMMETRIC METHODS. AERIAL PHOTOGRAPHS TAKEN AT AN ALTITUDE NOT TO EXCEED A FLYING HEIGHT TO CONTOUR INTERVAL RATIO OF 1800. PHOTOGRAPHY DATED 7/14/2007.
5. THE VERTICAL DATUM IS DERIVED FROM NAVD 88. THE HORIZONTAL DATUM IS DERIVED FROM NAD 83.
6. STANDARD DRAWINGS CALLED FOR ON THE PLAN & PROFILE SHALL CONFORM TO RCFC & WCD STD DRAWINGS, OR CALTRANS/CITY/ COUNTY STANDARD PLANS.
7. ELEVATIONS AND LOCATIONS OF UTILITIES WERE OBTAINED FROM AVAILABLE INFORMATION AND ARE SHOWN APPROXIMATELY ON THESE PLANS. 48 HOURS BEFORE EXCAVATION CALL UNDERGROUND SERVICE ALERT AT 1-800-227-2600. ALL UTILITIES SHALL BE PROTECTED IN PLACE EXCEPT AS NOTED ON PLANS AND SPECIFICATIONS.
8. THE CONTRACTOR IS REQUIRED TO CONTACT ALL UTILITY AGENCIES REGARDING TEMPORARY SUPPORT AND SHORING REQUIREMENTS FOR THE VARIOUS UTILITY LINES SHOWN ON THESE PLANS.
9. ALL OPENINGS RESULTING FROM CUTTING OR PARTIAL REMOVAL OF EXIST. CULVERTS, PIPES, OR SIMILAR STRUCTURES TO BE ABANDONED, SHALL BE SEALED AT BOTH ENDS WITH 6" MIN CLASS "B" CONCRETE.
10. UNLESS OTHERWISE SPECIFIED, MINIMUM STREET RECONSTRUCTION SHALL BE 0.33' TYPE "B" ASPHALT CONCRETE OVER 6" CLASS 2 AGGREGATE BASE OR AS SPECIFIED BY THE ENGINEER.
11. ALL RECONSTRUCTION, RESURFACING AND PAVEMENT DELINEATION, CURBS, SIDEWALKS AND OTHER IMPROVEMENTS ARE TO BE RECONSTRUCTED IN KIND AT THE SAME LOCATIONS AND ELEVATIONS AS THE EXISTING IMPROVEMENTS, UNLESS OTHERWISE NOTED.
12. FOR COMPLETE RIGHT-OF-WAY AND TEMPORARY EASEMENT REFER TO DRAWING RCFC DRAWING NO 6-325 SHEET 3 AND 4.



Don't Dig...Until You Call U.S.A. Toll Free  
1-800-227-2600  
for the location of buried utility lines.  
Don't disrupt vital services.  
TWO WORKING DAYS BEFORE YOU DIG

BENCH MARK  
RCFC B.M. NO. Z 13158  
2" BRASS DISC STAMPED 25+35.15  
BC DOWN 0.40 FT LOCATED SOUTH  
EAST OF INTERSECTION OF TOLEDO  
DR AND MURRAY CANYON RD ON  
LEVEE PER RCFC SURVEY NOTES  
DATED 12-4-06.  
ELEVATION= 511.00 NAVD 88

REVISIONS		
REF.	DESCRIPTION	APPR. DATE

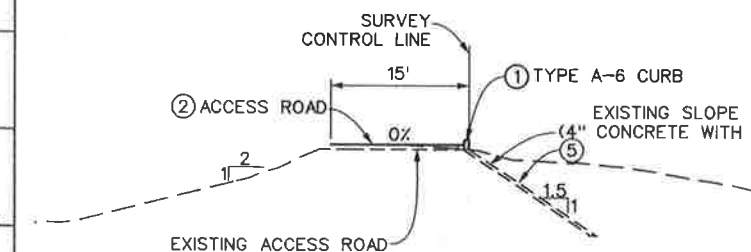
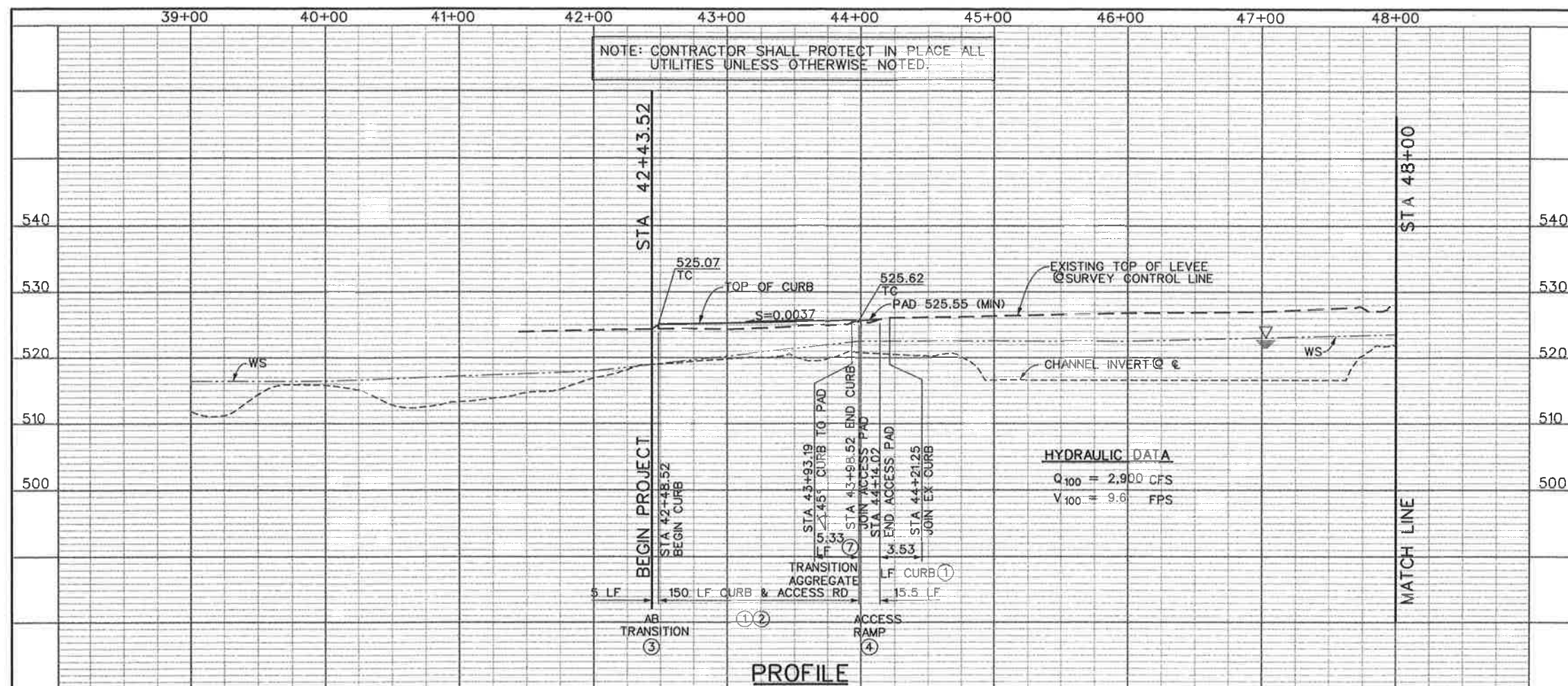
DESIGNED BY: D. DE CHAMBEAU  
DRAWN BY: T. DECKER  
DATE DRAWN: MAR 2011

RIVERSIDE COUNTY FLOOD CONTROL  
AND  
WATER CONSERVATION DISTRICT  
RECOMMENDED FOR APPROVAL BY:  
DATE: 3/2/11 R.E. No. 44684  
APPROVED BY:  
DATE: 3/2/11 R.E. No. 32336

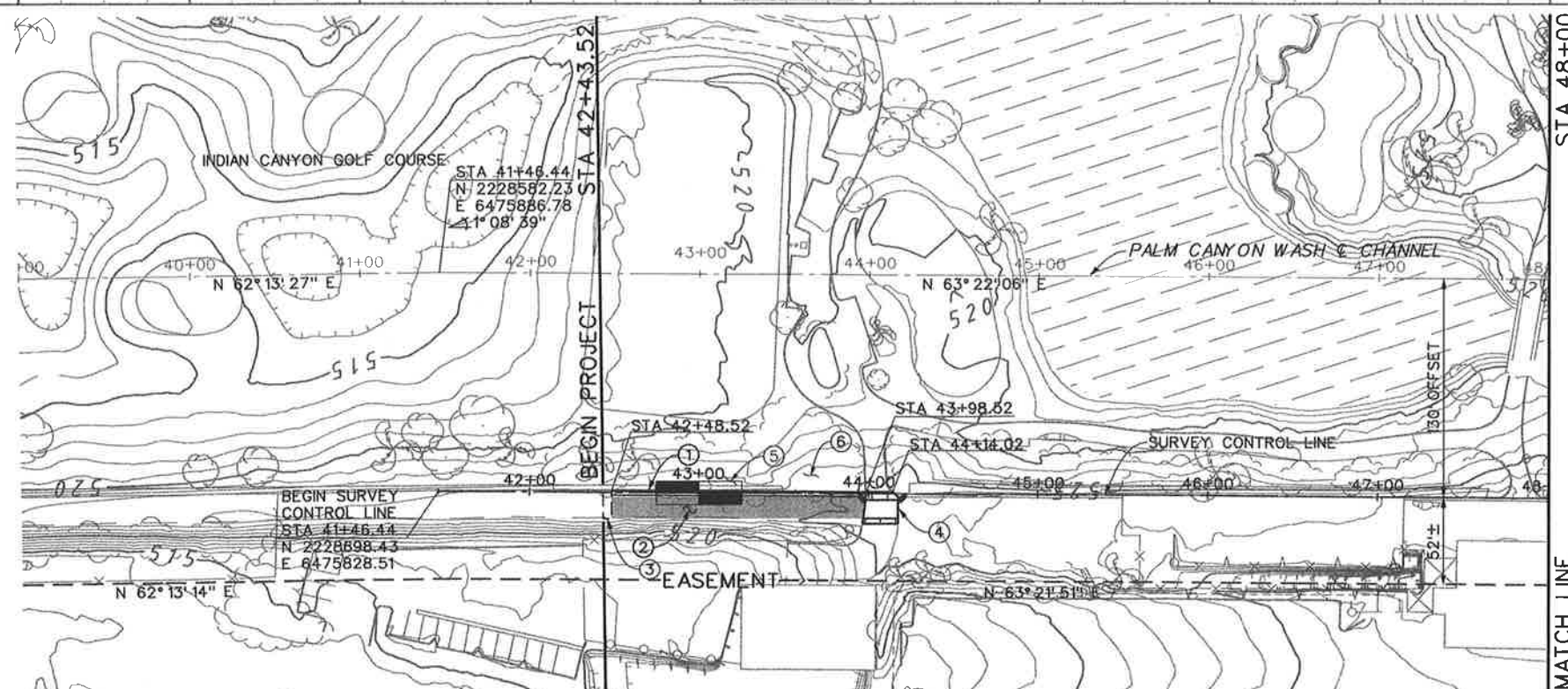
PALM CANYON WASH/  
ARENAS  
LEVEE RESTORATION  
STAGE 92  
TITLE SHEET

PROJECT  
6-  
DRAWING  
SHEET  
1





SECTION AT STATION 43+00



# NOTES

- CONSTRUCT TYPE A-6 CURB PER LIMITS SHOWN ON PLAN AND PRO
- PLACE 6" CLASS 2 AGGREGATE BASE ACCESS ROAD PER LIMITS SHO
- TRANSITION AGGREGATE BASE TO EXISTING ACCESS ROAD PER LIMITS SHOWN ON THIS SHEET AND DETAIL ON SHEET 5.
- CONSTRUCT CONCRETE ACCESS RAMP PER DETAIL ON SHEET 4.
- PROTECT EXISTING SLOPE PROTECTION IN-PLACE.
- REMOVE INTERFERING BUSH/SHRUBS AS DIRECTED BY THE ENGINEER
- TRANSITION AGGREGATE BASE FROM ACCESS ROAD GRADE TO ACCESS RAMP PAD GRADE.



## PLAN

Don't Dig...Until You Call U.S.A. Toll Free  
1-800-227-2600  
for the location of buried utility lines.  
Don't disrupt vital services.  
TWO WORKING DAYS BEFORE YOU DIG

## REVISIONS

RIVERSIDE COUNTY FLOOD CONTROL  
AND  
WATER CONSERVATION DISTRICT

DESIGNED BY: D. DE CHAMBEAU  
DRAWN BY: T. DECKER  
DATE DRAWN: MAR 2011

RECOMMENDED FOR APPROVAL BY:

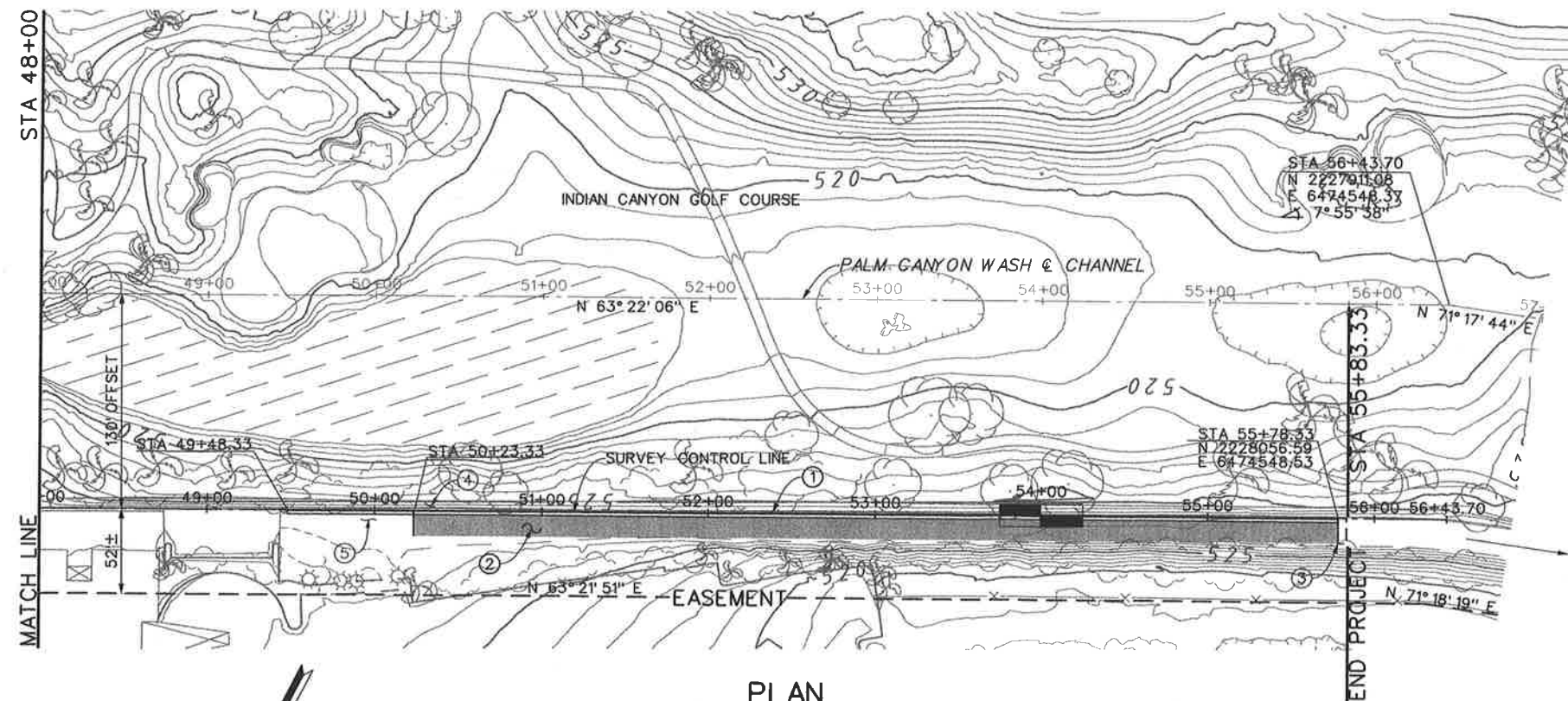
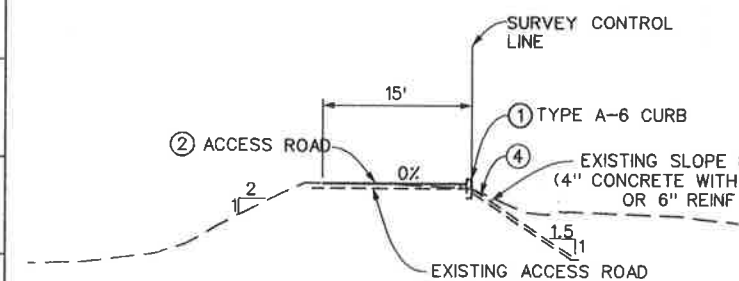
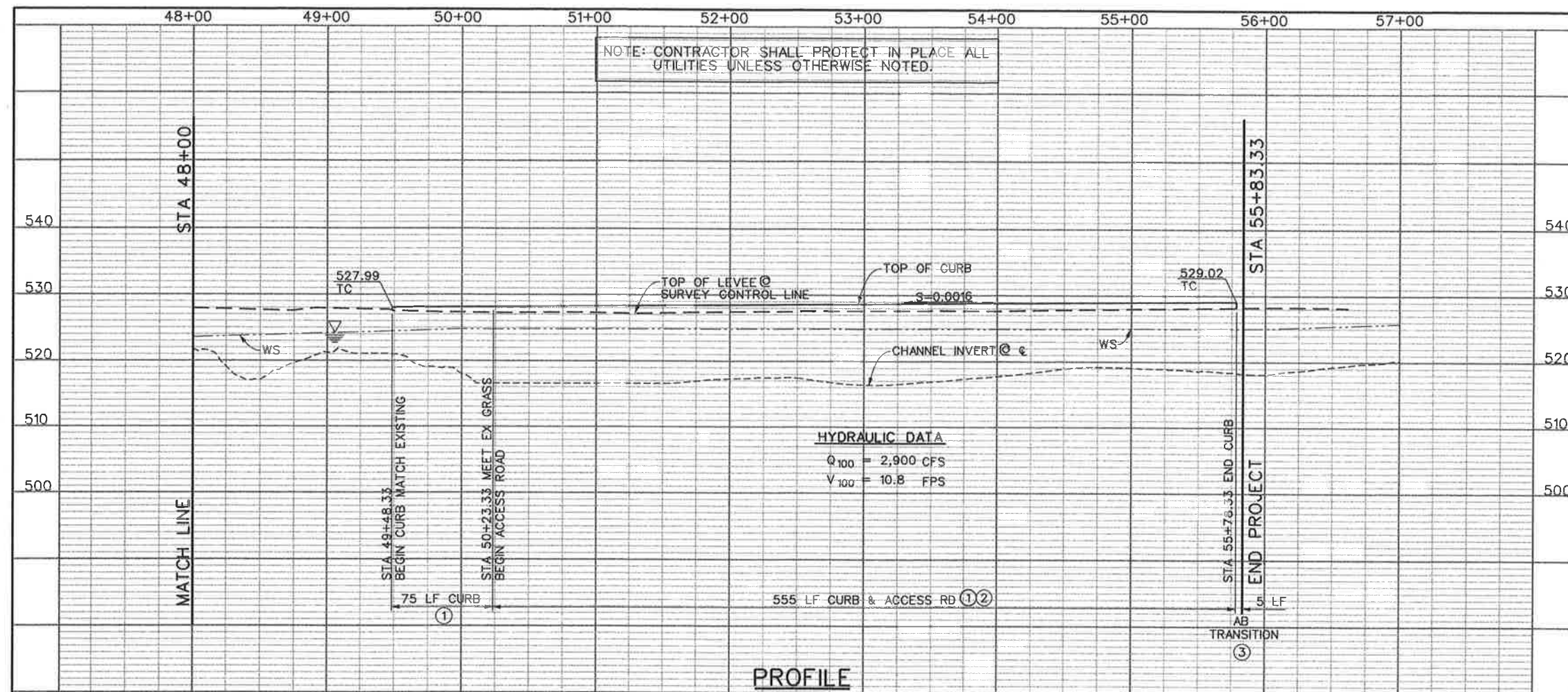
APPROVED BY:

DATE: 3/1/11

DATE: 3/1/11

PALM CANYON WASH/  
ARENAS  
LEVEE RESTORATION  
STAGE 92  
PLAN & PROFILE  
STA 42+43.52 TO STA 48+00

PROJECT  
6-  
DRAWING  
SHEET  
2



# NOTES

- CONSTRUCT TYPE A-6 CURB PER LIMITS SHOWN ON PLAN AND PROFILE.
- PLACE 6" CLASS 2 AGGREGATE BASE ACCESS ROAD PER LIMITS SHOWN ON THIS SHEET AND DETAIL ON SHEET 5.
- TRANSITION AGGREGATE BASE TO EXISTING ACCESS ROAD PER LIMITS SHOWN ON THIS SHEET AND DETAIL ON SHEET 5.
- PROTECT EXISTING SLOPE PROTECTION IN-PLACE.
- PROTECT EXISTING GRASS IN-PLACE. REPLACE SOD IN DISTURBED GRASS AREA.



REVISIONS	DESCRIPTION	APPR.	DATE

DESIGNED BY: D. DE CHAMBEAU	RECOMMENDED FOR APPROVAL BY: <i>[Signature]</i>	APPROVED BY: <i>[Signature]</i>
DRAWN BY: T. DECKER	DATE: 3/1/11	DATE: 1-2011
DATE DRAWN: MAR 2011		

RIVERSIDE COUNTY FLOOD CONTROL AND WATER CONSERVATION DISTRICT

PALM CANYON WASH/ ARENAS LEVEE RESTORATION

STAGE 92

PLAN & PROFILE

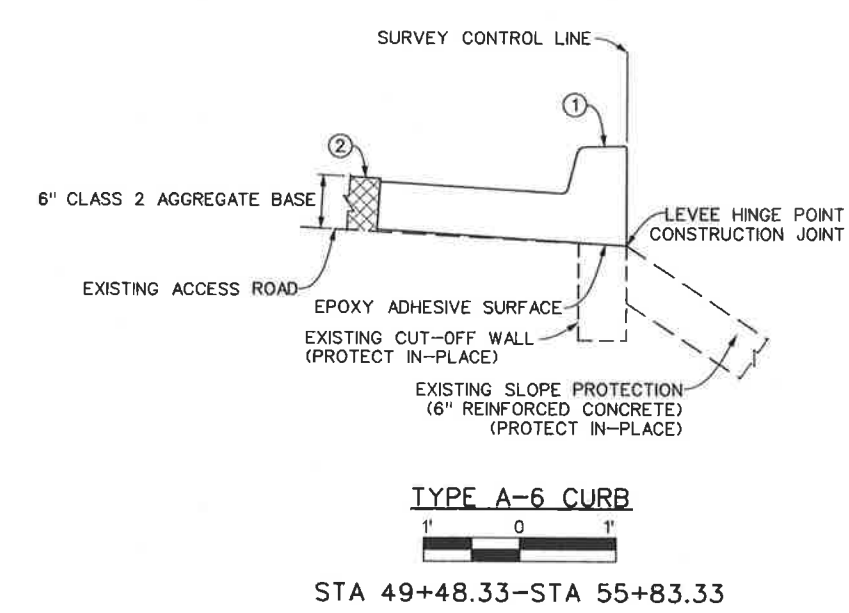
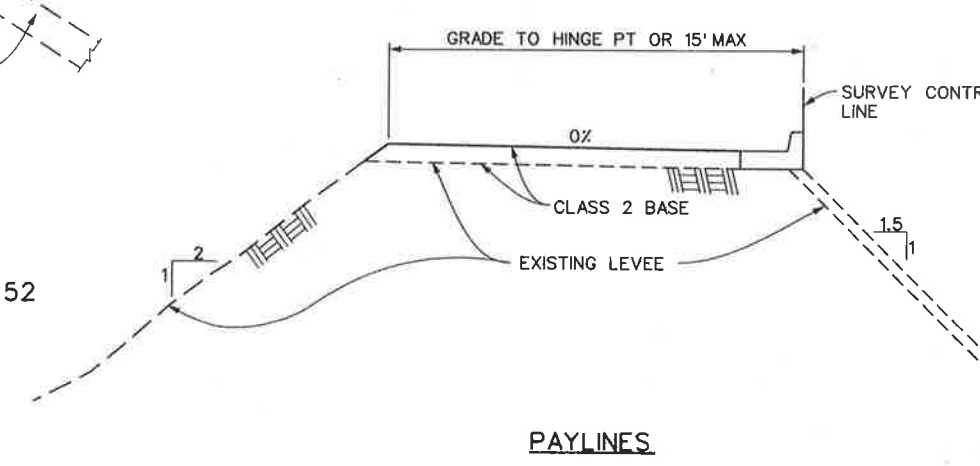
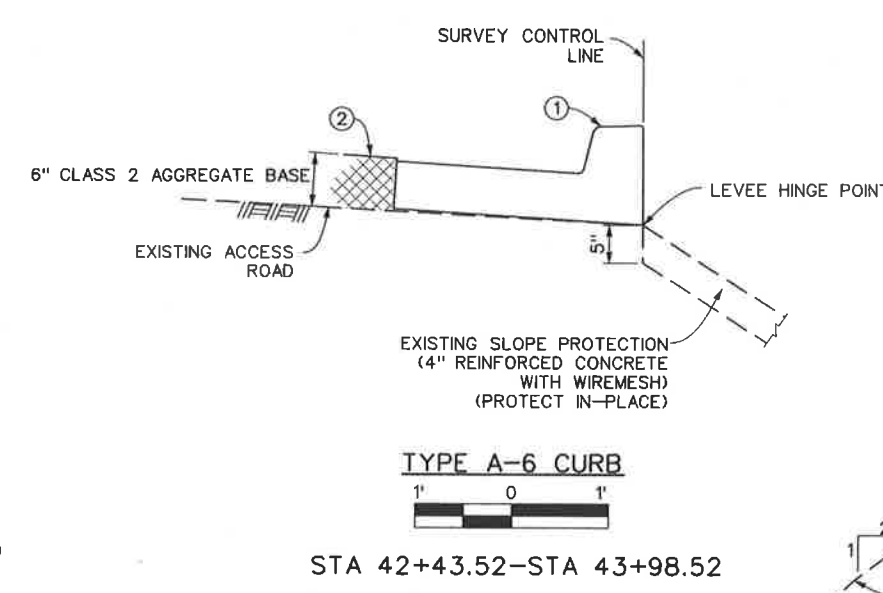
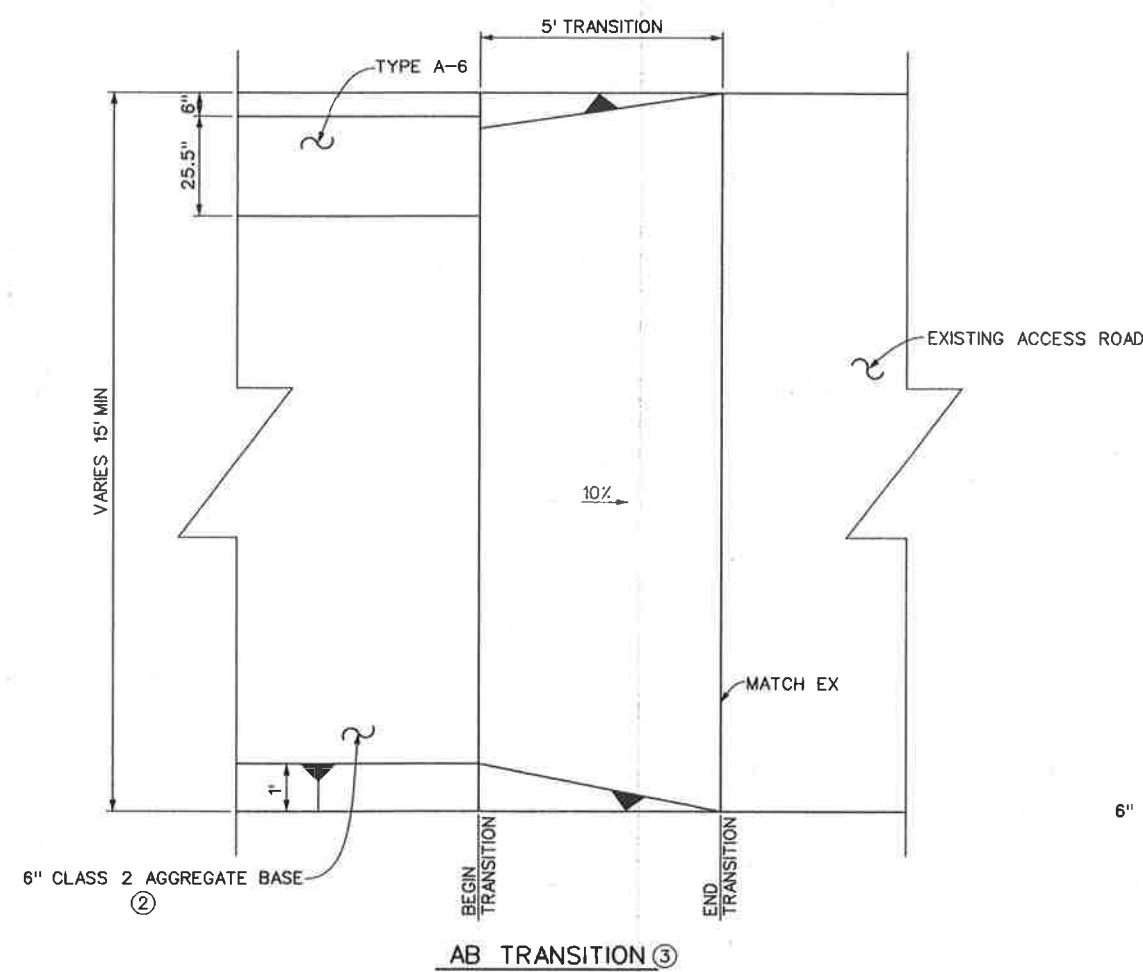
STA 48+00 TO STA 55+83.33

PROJECT 6- DRAWING SHEET 3









- NOTES**
1. CONSTRUCT TYPE A-6 CURB PER LIMITS SHOWN ON PLAN AND PROFILE AND DETAIL HEREON.
  2. PLACE 6" CLASS 2 AGGREGATE BASE ACCESS ROAD PER LIMITS AND DETAIL HEREON.
  3. TRANSITION AGGREGATE BASE TO EXISTING ACCESS ROAD PER LIMITS SHOWN AND DETAIL HEREON.



REVISIONS				RIVERSIDE COUNTY FLOOD CONTROL AND WATER CONSERVATION DISTRICT				PALM CANYON WASH/ ARENAS LEVEE RESTORATION STAGE 92		PROJECT 6-
DESIGNED BY:	D. DE CHAMBEAU	RECOMMENDED FOR APPROVAL BY:		APPROVED BY:		MISCELLANEOUS DETAILS		SHEET 5		DRAWING
DRAWN BY:	T. DECKER	DATE DRAWN:	MAR. 2011	DATE:	3/1/11					
REF.	DESCRIPTION	APPR.	DATE							