
REDISTRICTING STEERING COMMITTEE MEETING

MINUTES OF MEETING

October 26, 2010
11:00 a.m.

County Executive Office
4080 Lemon Street, 4th Floor
Conference Room C

Members Present:

Larry Ward
Jay Orr
Michelle DeArmond
John Field
Robin Hastings
Verne Lauritzen
Dave Stahovich

Chair, Assessor-Clerk Recorder
Co-Chair, Executive Office
4th District
2nd District
5th District
3rd District
1st District

Staff and Guests Present:

Dean Deines
Barbara Dunmore
Tina Grande
David Huff
George Johnson
Damian Laning
JiHong McDermott
Tom Mullen II
Donna Katchadoorian

Executive Office
Registrar of Voters
Executive Office
County Counsel
TLMA
TLMA
TLMA
TLMA
Executive Office

1. CALL TO ORDER:

The Redistricting Committee Meeting was called to order at 11:09 a.m.

2. ROLL CALL:

The sign in sheet will be used as the official roll call for the committee.

3. APPOINTMENT OF CHAIR:

Larry Ward requested clarification on the names of the current members.

Dean Deines stated that the committee is comprised of the Executive Office, Jay Orr, Larry Ward, Vern Lauritzen, Michelle DeArmond, Robin Hastings, John Field, and Dave Stahovich.

MOTION: Jay Orr moved to appoint Larry Ward to act as Chairman of the Redistricting Committee.

Seconded by: John Field

Motion approved unanimously

MOTION: John Field moved to appoint Jay Orr to act as Co-Chair.

Seconded by: Vern Lauritzen

Motion approved unanimously

4. MONTHLY MEETING SCHEDULE:

Dean Deines explained that this is a Brown Act Committee. The committee will be required to identify a day and time to meet each month on a regular basis.

David Huff pointed out that this committee is within the perimeters of the Brown Act. The regular meeting schedule should include a meeting once a month. The agenda notice that is sent out must be posted 72 hours prior to each meeting. When the committee is required to hold special meetings, the agenda notice would need to be posted 24 hours in advance.

MOTION: John Field moved to approve scheduling the Redistricting Steering Committee Meetings on the second Tuesday of each month at 2 p.m.

Seconded by: Vern Lauritzen

Motion approved unanimously

5. BACKGROUND ON REDISTRICTING:

David Huff provided a brief overview of the role of the committee. The immediate task is spelled out within the Elections Code § 21500. "Each decennial federal census, and using that census as a basis, the board shall adjust the boundaries of any or all of the supervisorial districts of the county so that the districts shall be as nearly equal in population as may be and shall comply with the applicable provisions of Section 1973 of

Title 42 of the United States Code. In establishing the boundaries of the districts the board may give consideration to the following factors: a) topography, b) geography, c) cohesiveness, contiguity, integrity, and compactness of territory; and, d) community of interests of the districts."

David Huff reported that the boundaries must be adjusted by the board by November 1 of the year following the year in which each decennial federal census is taken. The census was taken in April 2010. The board's task must be completed by November 1, 2011. If this does not occur, a supervisorial redistricting commission then takes over and would act before the December 31, 2011. The commission is comprised of the District Attorney, the County Assessor as well as the County Superintendent of Schools. There are issues such as equal protection of "one person one vote." Also, there is the Federal Voting Rights Act, which is in place primarily to protect the rights of minorities. One area, in particular, is the degree of variance which is allowed between one district to the other. The U.S. Supreme Court, with regard to non-congressional redistricting, provides that there cannot be a variance between the districts population that is 10 percent or greater. In the past, the threshold has been to adhere to a lower number of five percent.

David Huff continued stating that the redistricting is ultimately accomplished through an ordinance that is adopted by the board. The ordinance is broken down by five districts and for each of those districts, a legal description would show the exact boundary contours of that district. At least two board sessions are required in order for the ordinance to be adopted. There is a requirement in the Elections Code that states before the public hearing in which the ordinance would be approved there should be at least one other public hearing. At a minimum, there should be two public hearings before the board can officially approve the redistricting plan. Under the Voter's Rights Law, there is a provision for the citizens to propose their plans to the board for consideration.

George Johnson mentioned that TLMA would provide the technical assistance using their GIS demographics. George introduced JiHong McDermott and Damian Lanning. Their role is to provide the technical work under Tom Mullen's leadership and guidance.

Tom Mullen provided a Power Point presentation which highlighted the role of TLMA:

- Provide the technical work, draw the maps, prepare the website, produce a timeline, and receive comments from the public.
- Release maps through the authorized process.

Tom Mullen discussed the two primary vendors being considered:

- Caliper is currently integrated with the Registrar of Voter's software. The configuration of the Caliper software would integrate with the current GIS system. Each license is approximately \$3,500. Caliper is the largest redistricting software that is available in the nation.

-
- Citygate/ESRI software would not be ready until December and would cost approximately \$32,500.
 - TLMA also compared full feature online tools which are complex, expensive, and would require additional GIS training in order to use the software.

Dave Stahovich questioned whether this committee had budgetary authority to purchase the software? If this committee has budgetary authority, is this committee required to report budget items on a Form 700?

David Huff reported that this committee is a creation of the Executive Office. It is not a board created authorized committee. This committee does not have its own budget authority.

Dean Deines stated that \$200,000 has been budgeted for software and staff time.

Tom Mullen confirmed that there is money in the budget. When the budget was prepared last year money was set aside. The cost to purchase the software is approximately \$14,000 plus tax.

Tom Mullen continued summarizing the Power Point presentation:

- TLMA would build a website using the current Census website as a template. The content would include using existing boundary maps and would utilize proposed and existing draft maps, which the committee would be able to share with the public.
- Build out a web form which would allow the public to submit written and/or draft maps. This would allow the public to communicate to the committee their suggestions on how the districts should be drawn.
- Information and FAQ's would be posted on the web.
- Follow the Census block boundaries submitted by the U.S. Census.

Tina Grande proposed that the Redistricting Technical Committee consider doing triage work. Tina mentioned that she received a public comment from the Hemet Action Group. The Rose Institute prepared the study, but the Executive Office has not had an opportunity to validate their numbers. The submittal received from the Action Group would go into the public input file and when the criteria has been set it would be reviewed as appropriate. Tina offered to share the cover page which lists their members.

Dean Deines pointed out that the criteria would need to be set for the public to follow. The committee would be able to see their viable comments. TLMA would take the new numbers and incorporate them into existing boundaries as a starting point.

Tom Mullen suggested the committee consider the following items for future discussion:

- Who would release the authorization of the maps?
- Set up a process of keeping track of the maps.
- TLMA's recommendation is to have the committee Chair potentially authorize the release of all maps.
- Decide how the committee would interact and take comments from the public.
- Possibility of a GIS staff person to meet with the public on an appointment basis.

Current items to be completed are as follows:

- From now until the end of the year provide the committee with a demo of the software.
- Build out the website for the committee's consideration prior to publication.
- Census data would not be available until late March. Once it has been received, produce a map to show the actual data.
- Update pre-selected scenarios based upon the projections:
- Once the data has been approved by the committee, the information would be published at the direction of the committee.
- Input racial and ethnic group data into the system in late March 2011.

Tom Mullen announced that he would like to utilize the Riverside County 2010 projections that were approved by the Board of Supervisors in August. The projections were developed based on the Department of Finance estimates. Tom presented the committee with a map of the existing boundaries in 2000 and in 2010. The committee should think about possible changes to the boundaries in order to balance the districts appropriately.

Jay Orr suggested that TLMA provide the committee with a demo of the new software.

Vern Lauritzen stated, for the record, does anyone own any stock in Caliper?

No committee member stated that they own stock in Caliper.

Chairman Larry Ward suggested the committee agree to meet on November 9 for a 30 minute software demonstration. The committee agreed unanimously to meet on November 9 at 2 p.m.

6. PRESENTATION AND APPROVAL OF THE EXECUTIVE OFFICE'S REDISTRICTING WORK PLAN:

Dean Deines reviewed and informed the committee the order of the Redistricting work plan. This item went to the Board of Supervisors in September as an information item. The work plan maps out the steps this committee must complete. The Executive Office is responsible for organizing the Redistricting Committee. In September, the Board of Supervisors appointed Supervisor Ashley as the liaison between this committee and the board.

Dean Deines stated that Supervisor Ashley requested weekly updates on the agenda. There will be a budget update at the beginning of each board meeting, which would include a redistricting update to the board members. Bill Luna would provide the brief update. This would keep the public and the board updated on the progress of this committee. Status reports would be presented to the board with the cooperation of this committee. The committee should consider how to educate the public and the possibility of workshops, and/or provide a website to assist in interacting with the public. Supervisor Ashley also requested that this task be completed by August. In July/August, the maps should be presented to the Board of Supervisors for their final approval. A public hearing and a second public hearing would be necessary in order to approve the maps.

Tina Grande recommended that the committee approve work plan. The work plan will change as the committee continues through the process. Those changes would be provided to the committee at each meeting.

MOTION: John Field moved to approve the work plan as submitted.

Seconded by: Robin Hastings

Motion approved unanimously

7. OTHER BUSINESS:

No other business was discussed.

8. NEXT MEETING:

The next regularly scheduled Restricting Committee Meeting is set for Tuesday, November 9 at 2 p.m., in the County Executive Office, 4th Floor, Conference Room C.

9. PUBLIC COMMENT:

No members of the public presented comments.

With no further comments, Chairman Larry Ward adjourned the meeting at 12:14 p.m.

REDISTRICTING STEERING COMMITTEE MEETING

MINUTES OF MEETING

November 9, 2010
2 p.m.

County Executive Office
4080 Lemon Street, 4th Floor
Conference Room C

Members Present:

Larry Ward
Michelle DeArmond
John Field
Robin Hastings
Verne Lauritzen

Chair, Assessor-Clerk Recorder
4th District
2nd District
5th District
3rd District

Members Absent:

Jay Orr
Dave Stahovich

Co-Chair, Executive Office
1st District

Staff and Guests Present:

Olivia Barnes
Dean Deines
David Huff
George Johnson
John Kavorinos
Damian Laning
JiHong McDermott
Donna Katchadoorian

3rd District
Executive Office
County Counsel
TLMA
TLMA
TLMA
TLMA
Executive Office

1. CALL TO ORDER:

The Redistricting Steering Committee Meeting was called to order at 2:05 p.m. Self-introductions were given by those present.

2. APPROVAL OF MINUTES OF OCTOBER 26, 2010:

MOTION: Verne Lauritzen moved to approve the October 26, 2010 minutes as stated.

Seconded by: Robin Hastings

Motion approved unanimously

3. REDISTRICTING SOFTWARE PRESENTATION (TLMA):

Chairman Larry Ward introduced Damian Laning and JiHong McDermott, from TLMA.

Damian Laning presented the committee with an overview of the redistricting software. The software is an ESRI product which uses the existing functionality of the GIS software currently in place. The software will enable the use of the current aerial imagery and the existing supervisorial boundaries. For demonstration purposes, Damian used the 2000 census data for his presentation. The software has a wide variety of reporting and allows up to 10 variables.

JiHong McDermott provided the committee with a copy of the Summary Tables Outline Report, which noted 291 variables. Reports can be generated based on the attributes provided by the census data.

Verne Lauritzen questioned whether ethnicity would be factored into the report?

David Huff pointed out that ethnicity does play a role. David mentioned a prominent case in Los Angeles County. Because of the unique characteristics, Los Angeles County has a sizable ethnic community which was formed into a supervisorial district. This case may not be applicable to other counties where the population is more evenly mixed, but it is a factor to consider. David mentioned the voting rights act, which protects minorities.

Damian Laning announced that Citygate/ESRI was the other vendor under consideration, but pointed out that the software would not be released until the end of next month. Citygate was twice the price of Caliper. Damian noted that approximately three or four licenses would be required. The licensing fee for Caliper is \$3,500. The licensing fee for Citygate is \$6,800.

Dean Deines informed the committee that a recommendation is necessary from the committee to direct TLMA and the Executive Office to proceed with the purchase of the software.

MOTION: Robin Hastings moved to recommend the purchase of the Caliper Software.

Seconded by John Field

Motion approved unanimously

4. OTHER BUSINESS:

Dean Deines suggested that the next agenda should include a recommendation to develop criteria for the boundary changes. Provide a report to the BOS, which would include the committee's recommendation to proceed with the purchase of the Caliper Software.

5. PUBLIC COMMENT FOR ITEMS NOT LISTED ON THE AGENDA:

No members of the public presented comments.

6. ADJOURNMENT:

The next regularly scheduled Redistricting Steering Committee Meeting is scheduled for Tuesday, December 14, 2010 at 2 p.m.

With no further comments, Chairman Larry Ward adjourned the meeting at 2:25 p.m.

REDISTRICTING STEERING COMMITTEE MEETING

MINUTES OF MEETING

December 14, 2010

2 p.m.

County Executive Office
4080 Lemon Street, 4th Floor
Conference Room C

Members Present:

Larry Ward
Michelle DeArmond
John Field
Verne Lauritzen
Dave Stahovich

Chair, Assessor-Clerk Recorder
4th District
2nd District
3rd District
1st District

Members Absent:

Jay Orr
Robin Hastings

Co-Chair, Executive Office
5th District

Staff and Guests Present:

Dean Deines
David Huff
George Johnson
Damian Laning
JiHong McDermott
Tom Mullen II
Donna Katchadoorian

Executive Office
County Counsel
TLMA
TLMA
TLMA
TLMA
Executive Office

1. CALL TO ORDER:

The Redistricting Steering Committee Meeting was called to order at 2:10 p.m. Donna Katchadoorian conducted the roll call.

2. APPROVAL OF MINUTES OF NOVEMBER 9, 2010:

MOTION: John Field moved to approve the November 9, 2010 minutes as stated.

Seconded by: Verne Lauritzen

Motion approved unanimously

3. DEVELOP CRITERIA FOR BOUNDARY CHANGES:

Chairman Larry Ward announced that David Huff would provide the committee with an overview of the Criteria to Guide the Redistricting.

David Huff outlined the legal criteria that the law requires under state and federal law. The Elections Code § 21500 states: "Following each federal decennial census, and using that census as a basis, the Board shall adjust the boundaries of any or all of the supervisorial districts of the county so that the districts shall be nearly equal in population."

David Huff explained another component the "One Person One Vote Rule." This is based on equal protection principles so that citizens regardless of which district they reside in their vote is equal in weight to any other citizen within that jurisdiction. The rule states that there cannot be a maximum deviation on population equality that is 10 percent or more. The federal Voting Rights Act interprets the specific breakdown between Section 2 and Section 5 of the Voting Rights Act. The Act was amended in 1982 to provide for a "results" test where a challenging plaintiff does not need to show a discriminatory motive or purpose in order to establish a violation.

David Huff pointed out when establishing the boundaries of the districts, the board may give consideration to topography, geography, cohesiveness, contiguity, integrity, compactness of territory, and communities of interest of each district. David discussed the Shaw v. Reno case. This case was a classic example of what not to do when establishing a district. Another example was the California Supreme Court case in Legislature v. Reinecke. It is important to try and keep cities intact when drawing the lines. Race may not be a predominant factor in defining a community of interest.

In addition, David Huff discussed the DeBaca v. County of San Diego which involved challenges with the Latinos, African-Americans and Asian-American citizens who banded together and brought a class action suit alleging that San Diego County's plan violated the protection rights as well as the Voting Rights Act. The plaintiffs failed to show that the three minority groups constituted one politically cohesive minority group and were unable to show that racially polarized voting existed on the part of the white

majority. In the Garza v. County of Los Angeles the plaintiffs were able to show that the plan was in violation of their Constitutional equal protection rights as well as the Voting Rights Act.

Verne Lauritzen suggested that the legal grounds criteria be kept as simple and basic to the legal process as possible.

Michelle DeArmond asked for clarification on the Elections Code, Board-appointed study committee.

David Huff explained that Elections Code § 21505 states that the Board of Supervisors may appoint an advisory committee composed of county residents and that the committee is required to present a report to the Board with its findings and recommendations within six months after the final census figures have been released. Typically the figures are released at the end of March or first of April, but no later than August 1. After the August 1 date, the committee has no ability to act.

David Huff further stated that the non-board appointed staff advisory committee is not created by the Board of Supervisors, but by the action of the Executive Office. The difference is the non-board appointed staff advisory committee has more latitude than the August 1 date. Both committees are subject to compliance with the Brown Act.

Tom Mullen summarized the mechanics of the census data breakdown. The data that is received from the U.S. Census Bureau is at the block level. This block is the smallest geographic unit used by the United States Census Bureau for tabulation of population data. If a block must be split, it is recommended that the split be shown in the latest draft version of any plans being considered. There are 288 racial and ethnic groups and three occupancy groups for a total of 291 total data components which will be coming from the U.S. Census in late March. The 2000 census will be used as a point of reference to identify the ethnic groups which have been tracked through the process.

Tom Mullen informed the committee that once the census data comes in a report will be generated which shows the 2000 data v. the 2010 data. The report will include actual discrepancies and the growth which has occurred. Another key element is identifying the total population over 18 years of age in each district.

Chairman Larry Ward announced receiving a recent request presented from the public. This information needs to be included and reviewed. The website should outline how the public can bring comments to the committee for consideration. There should also be a timeframe included on the website.

Tom Mullen confirmed that the software has been loaded into the system. Tom agreed to provide the committee with a presentation and an update on the software the first meeting in February.

MOTION: Verne Lauritzen moved to accept the criteria as the legal guide to redistricting.

Seconded by: Michelle DeArmond

Motion carried unanimously

John Field suggested the committee not adopt the criteria until February.

Dave Stahovich agreed with John Field that the committee should not adopt the criteria at this meeting.

Verne Lauritzen withdrew his motion.

Dean Deines explained that the actual work will begin in March. Dean suggested that Tom provide a presentation of the new software in January and in February the committee can finalize the criteria.

4. UPDATE ON THE REDISTRICTING WEBSITE:

Tom Mullen presented the committee with a draft copy of the County Redistricting Committee website home page. The intent is to create a simple navigation, highlight the redistricting maps with the new information, share basic data, and to create a vehicle for the public to provide comment.

Michelle DeArmond questioned whether the links would include the election codes? Michelle suggested using a different color scheme for the web page.

Chairman Larry Ward suggested that the colors on the web page be changed and sent out as a draft to the committee for their comments and recommendations.

David Huff suggested including in the website a mailing address, an e-mail contact, and a phone number. The information received from the public would need to be logged into the system. All information would be kept on file as public record.

5. OTHER BUSINESS:

No other business was discussed at this time.

6. PUBLIC COMMENT FOR ITEMS NOT LISTED ON THE AGENDA:

No members of the public presented comments.

7. ADJOURNMENT:

The next regularly scheduled Redistricting Steering Committee Meeting is scheduled for Tuesday, January 11, 2011 at 2 p.m. In January if there are no items for discussion, the January meeting may be canceled until Tuesday, February 8, 2011 at 2 p.m.

With no further comments, Chairman Larry Ward adjourned the meeting at 3:25 p.m.

REDISTRICTING STEERING COMMITTEE MEETING

MINUTES OF MEETING

February 8, 2011

2 p.m.

County Executive Office
4080 Lemon Street, 4th Floor
Conference Room C

Members Present:

Larry Ward

Jay Orr

Michelle DeArmond

John Field

Robin Hastings

Verne Lauritzen

Dave Stahovich

Chair, Assessor-Clerk Recorder

Co-Chair, Executive Office

4th District

2nd District

5th District

3rd District

1st District

Staff and Guests Present:

Olivia Barnes

Amalia Deaztlan

Tizoc Deaztlan

Dean Deines

David Huff

George Johnson

Damian Laning

JiHong McDermott

Tom Mullen II

Daryl Terrell

Curtis Wright

Donna Katchadoorian

3rd District

Deaztlan Consulting

Deaztlan Consulting

Executive Office

County Counsel

TLMA

TLMA

TLMA

TLMA

Resident

Best, Best & Krieger

Executive Office

1. CALL TO ORDER:

The Redistricting Steering Committee Meeting was called to order at 2:05 p.m. The roll call was conducted by Donna Katchadoorian.

2. APPROVAL OF MINUTES FOR DECEMBER 14, 2010:

MOTION: Verne Lauritzen moved to approve the December 14, 2010 minutes as stated.

Seconded by: John Field

Motion approved unanimously

3. REDISTRICTING WEBSITE PRESENTATION:

Tom Mullen presented an overview of the new redistricting website. The website has not yet been published. The website will include the following information: The past/current minutes and agendas, important calendar dates, FAQ's, links concerning the Election's Code Voting Rights Act, and a link to the U.S. Census Bureau. In addition, the website will also include supervisorial district maps for each district, public notices, and a section for the public to distribute information to the committee for consideration. The web address is available at <http://www.rivcoredistricting.org/> and will be officially launched around the first couple of weeks in March. Tom reported that the census will be releasing numbers by the end of March.

Tom Mullen mentioned working on developing the analysis tools to introduce the data once the file is received from Caliper. Once the data has been released, Tom will provide a report which will show the actual U.S. Census data changes from 2000 to 2010.

Robin Hastings pointed out that the website is a great communication tool for receiving and sharing information. Robin suggested that David Huff provide a legal timeline when items are due.

Michelle DeArmond questioned how Tom planned on getting the word out to the media and the public?

Tom Mullen indicated that he would be working with Ray Smith, the Public Information Officer, to coordinate the announcements for the press release.

Chairman Larry Ward explained that there are specific timelines that need to be addressed and included on the website. The following original timeline provided by the Executive Office should be included on the website:

April – July 2011

- Develop proposed Redistricting Plans, and accept plans from the public.
- Once plans are developed and accepted, the Redistricting Steering Committee will begin to evaluate all plans.
- The Executive Office to provide status reports to the Board of Supervisors.

July – August 2011

- Continue to provide status reports to the Board of Supervisors.
- The preferred plans would be brought forward and would be selected.
- The Board of Supervisors would hold a public hearing to consider any proposal to adjust the boundaries of a district.
- At the second public hearing, the Board of Supervisors would be asked to:
 - Approve a preferred redistricting plan.
 - Direct Survey to create the appropriate legal description.
 - Adopt the appropriate ordinance.
- A final public hearing will need to take place. It cannot occur any later than the last week in October in order to meet the deadline of November 1, 2011.

David Huff noted that the Board of Supervisors will need to take final action on the plan prior to November 1. At least two board hearings are required and a minimum of two public hearings are necessary before the board can officially adopt the ordinance that contains the legal description of the boundaries for each district.

Dave Stahovich suggested that the committee check with the Clerk of the Board and see what potential public hearing dates are available and start with the November date and work backwards. After the data starts coming in then the hearing dates can be set.

Dean Deines reminded the committee that Supervisor Ashley is the liaison of this committee and Dean will brief him on the website and ask for his input as to available hearing dates.

4. OTHER BUSINESS:

Chairman Larry Ward mentioned at the last meeting Verne Lauritzen moved to accept the criteria as the legal guide to redistricting. The motion was later withdrawn. John Field suggested that the committee adopt the criteria in February. Items for consideration are: population, equalization, boundaries, and the One Person One Vote Rule. Also taking into consideration are topography, cohesiveness, integrity, and the compactness of territory.

David Huff noted that these are guidelines that the Board of Supervisors will be required to consider before adopting the plan. David Huff clarified that the committee needs to be aware of the criteria, but the committee is not required to adopt the legal criteria. No action was taken.

5. PUBLIC COMMENT FOR ITEMS NOT LISTED ON THE AGENDA:

Amalia Deaztlan mentioned working for the Census Bureau in the Counties of Riverside and San Bernardino. Amalia informed the committee that public meetings should be properly noticed by the media. She indicated that Riverside and San Bernardino Counties have a large Latino population and questioned whether the new website would be available in Spanish?

Tom Mullen mentioned that a Spanish website had not been discussed.

Daryl Tarrell, a local resident, suggested that the public hearings be held in each supervisorial district. Daryl recommended the committee consider holding town hall outreach meetings.

Chairman Larry Ward noted that this committee has an advisory role. Recommendations are presented to the board and the board decides to either accept or reject those decisions. Both suggestions would be presented to the supervisor.

6. ADJOURNMENT:

~~The Committee decided to cancel the regularly scheduled Redistricting Steering Committee Meeting on Tuesday, March 8, 2011 and schedule a "Special" Redistricting Steering Committee Meeting to be held on Tuesday, March 15, 2011 at 2 p.m.~~

REDISTRICTING STEERING COMMITTEE MEETING

MINUTES OF MEETING

“Special Meeting”

March 15, 2011
2 p.m.

County Executive Office
4080 Lemon Street, 4th Floor
Conference Room C

Members Present:

Larry Ward
Jay Orr
Michelle DeArmond
John Field
Robin Hastings
Verne Lauritzen
Dave Stahovich

Chair, Assessor-Clerk Recorder
Co-Chair, Executive Office
4th District
2nd District
5th District
3rd District
1st District

Staff and Guests Present:

Olivia Barnes
Dean Deines
Dave Downey
Duane Gang
Tina Grande
David Huff
George Johnson
Darcy Kuenzi
Damian Laning
JiHong McDermott
Tom Mullen II
Ray Smith
Kari Verjil
Donna Katchadoorian

3rd District
Executive Office
The Californian
The Press-Enterprise
Executive Office
County Counsel
TLMA
5th District
TLMA
TLMA
TLMA
Executive Office
Registrar of Voters
Executive Office

1. CALL TO ORDER:

The Redistricting Steering Committee Meeting was called to order at 2:03 p.m. The roll call was conducted by Donna Katchadoorian.

2. APPROVAL OF MINUTES FOR FEBRUARY 8, 2011:

MOTION: Robin Hastings moved to approve the February 8, 2011 minutes as stated.

Seconded by: John Field

Motion approved unanimously

3. WEBSITE STATUS AND LATEST INFORMATION:

Tom Mullen announced that the website has been officially launched and is available at <http://www.rivcoredistricting.org/>. The website will continue to include past/current minutes and agendas, important calendar dates and FAQ's. At the last meeting, discussion focused on including a Spanish language translation software. TLMA is currently evaluating a couple of appropriate software packages to comply with the request for Spanish and other languages. The website is now ready to accept written comments, as well as separate components including GIS based files, TIF files, pdf files and additional formats. Tom agreed to work with Ray Smith, the Public Information Officer, to produce an appropriate press release after the meeting.

Dave Stahovich, from the 1st District and Ray Smith joined the meeting.

Tom Mullen provided a brief overview of the website. The U.S. Census data was released last week. The component for Riverside County was extracted last Tuesday. There has been a phenomenal growth within the county. In the year 2000, Riverside County had 1.5 million residents. In 2010 the population was 2,189,641 with a growth of 644,254 people. This is significant, because Riverside County grew more than L.A. and San Bernardino counties combined during the past 10 year cycle. The Hispanic/Latino population has grown numerically. The Asian population has grown at a greater rate. Additionally, the over 18 year old population increased substantially adding 493,000 to that age group. There has also been a significant growth in the high density areas, particularly in District 2 along the border of Eastvale, Jurupa Valley and the southern part of the county. In the year 2000 the target number per district was 309,077 people. Due to the growth throughout the decade the 2010 target number is 437,928 people. This is the amount of gain or loss that needs to occur in each district in order to achieve the recommended target number. This will enable a 2.5 percent target for each district so the variance is not more than 5 percent between districts.

4. RELEASE OF THE 2010 CENSUS DATA:

Tom Mullen indicated that the data files from Caliper are being loaded into the system. A training session is scheduled for Thursday and it is anticipated that the team will be fully functional and ready to go by Wednesday, March 23.

5. REDISTRICTING TIMELINE:

Chairman Larry Ward spoke with David Huff, from County Counsel, and requested that David provide a proposed timeline for the committee to consider adopting.

David Huff provided the committee with significant guidelines to follow for the timeline. On June 14, 2011 a Form 11 will be presented to the Board of Supervisors. The Board of Supervisors will set the initial public hearings to begin on June 28, 2011. There are a minimum of at least two public hearings on June 28, July 12 and July 26, 2011 that would allow for public testimony, submission of written comments and discussion by the Board of Supervisors with regards to the plan(s) under consideration. The last hearing date is the time the motion would be made to close the hearing and would include the appropriate redistricting plan and direct staff to prepare an implementing ordinance for introduction in August or September. The ordinance would be introduced on August 16 or September 13, depending on when the legal description information becomes available from the Transportation Survey staff. The Board of Supervisors must adopt the implementing ordinance no later than September 30, 2011 in order to meet the October 31, 2011 deadline. The ordinance becomes legally effective 30 days after adoption for adjustment of supervisorial district boundaries as indicated by California Elections Code Section 21501.

MOTION: John Field moved to approve the 2011 Proposed Dates for the BOS Redistricting Timeline.

Seconded by: Dave Stahovich

Motion approved unanimously

Dean Deines noted that the timeline will be incorporated into the website along with the maps provided by TLMA.

Dave Stahovich suggested that disclaimers be included on the website.

David Huff agreed to work with Tom Mullen to include the appropriate language for the disclaimers and appropriate format.

6. OTHER BUSINESS – TIMING AND LOCATION OF COMMUNITY FORUMS:

Chairman Larry Ward mentioned meeting with Jay Orr, David Huff and Supervisor Ashley, the liaison with the board, a couple of weeks ago. At the meeting, discussion focused on holding community meetings. Supervisor Ashley is in favor of community forums where this committee would meet with the public, provide an overview of the process, include a presentation of the redistricting maps, and David Huff would be available to discuss the legal issues that must be followed. The committee discussed holding the public forums at three separate locations.

Jay Orr suggested holding the town hall forums in Riverside, Menifee and Desert Hot Springs. The committee agreed to hold the forums on April 20, 21 and 27. Dean Deines will organize the times and locations for each meeting.

MOTION: Robin Hastings moved to adopt holding the town hall forums in Riverside, Menifee and Desert Hot Springs on April 20, 21 and 27.

Seconded by Verne Lauritzen

Motion approved unanimously

7. PUBLIC COMMENT FOR ITEMS NOT LISTED ON THE AGENDA:

No members of the public presented comments.

Tom Mullen pointed out that the team will be prepared to begin drawing lines for the committee next week. Tom asked the committee for direction on how they wanted to interact with the software team.

Chairman Larry Ward suggested that the committee hold a "Special" Meeting on Tuesday, March 29, 2011. At this meeting, the data will be reviewed and the committee will see how the data is incorporated into the system.

8. ADJOURNMENT:

The Committee agreed to hold a "Special" Redistricting Steering Committee Meeting to be held on Tuesday, March 29 at 11:30 a.m. With no further discussion, the Redistricting Steering Committee Meeting was adjourned at 3:04 p.m.

REDISTRICTING STEERING COMMITTEE MEETING

MINUTES OF MEETING

“Special Meeting”

March 29, 2011
11:30 a.m.

County Executive Office
4080 Lemon Street, 4th Floor
Conference Room C

Members Present:

Larry Ward
Jay Orr
Michelle DeArmond
John Field
Robin Hastings
Dave Stahovich
Verne Lauritzen

Chair, Assessor-Clerk Recorder
Co-Chair, Executive Office
4th District
2nd District
5th District
1st District
3rd District

Staff and Guests Present:

Dean Deines
Tina Grande
Ray Smith
David Huff
George Johnson
Damian Laning
JiHong McDermott
Tom Mullen II
Jeremy Clark
Emily Lee
Dave Downey
Duane Gang
Joe Daugherty
Eric Gosch
Gilberto Esquivel
Yolanda Esquivel
Jana Roush

Executive Office
Executive Office
Executive Office
County Counsel
TLMA
TLMA
TLMA
TLMA
TLMA
The Californian
The Press-Enterprise
Menifee Action Group
Hemet-San Jacinto Action Group
LULAC
LULAC
Executive Office

1. CALL TO ORDER:

The Redistricting Steering Committee Meeting was called to order at 11:35 a.m. The roll call was conducted by Chairman Larry Ward.

2. APPROVAL OF MINUTES FOR March 15, 2011:

MOTION: Robin Hastings moved to approve the March 15, 2011 minutes as stated.

Seconded by: John Field

Motion approved unanimously

3. PUBLIC FORUM UPDATE:

Dean Deines reiterated that public forums are planned for April 20, 21, and 27. At the last meeting there was discussion regarding sites for the forums in Riverside, Menifee, and Desert Hot Springs. There is ample space in the Board Chambers for the forum here in Riverside. Dean contacted the Perris Union High School District about using the theatre at Heritage high school. There are some fees involved as one of their staff must be present during the forum. The theatre holds approximately 400 people. Perris high school requires proof of insurance. Dean will coordinate that with Risk Management. Dean has also been trying to reach someone at the Desert Hot Springs high school, and will continue to work on that. Larry Ward asked that a press release go out, once the sites have been secured.

Larry Ward informed everyone that the State's redistricting community meeting would be held that same evening from 6:00-9:00 p.m., at the Orange Terrace Community Center. Larry planned to attend to see the format they were using. The idea is to educate and solicit input.

Verne Lauritzen, from the 3rd District, joined the meeting.

4. REVIEW PUBLIC SUBMITTALS:

Dean Deines had one public request from the Hemet-San Jacinto Action Group, with a request to keep Hemet and San Jacinto in one Supervisorial District. It was submitted prior to the final census numbers coming out, so the numbers used in the request were projected numbers. Staff's recommendation was to return the submittal and invite a revamped submittal in the future.

Jay Orr suggested we set up a process where when we receive a submittal, staff writes a cover summary, and then it gets distributed to all voting members for their review.

Jay thought we would need a public comment cut-off date because if a document should come in at the last minute, we would not have the ability to distribute it to the members.

David Huff suggested the cut-off date be set in early May, not long after the community meetings.

Dave Stahovich indicated that we should encourage comments early. The earlier we get them the more time we have to consider them, so they can be given the full value they are due.

Robin Hastings suggested that we set a May 28 deadline, which is 30 days prior to the staff report going to the Board.

Larry Ward would like to see the information distributed to the committee as quickly as possible. Larry asked that Dean Deines vet it initially. If a staff report is needed, send it back; otherwise just forward it on to the committee.

Dean discussed the three emails that came in on the website. One asked, "Are we going to have public meetings?" Another requested that the pass area be in one District. The other asked that Menifee be in the 5th District. Dave Stahovich proposed that those types of comments/requests be included in the meeting packet. Dean agreed to have them included in the meeting packet for presentation at the meetings.

5. ACTIVITY: MAPPING OF DISTRICT ALTERNATIVES:

Tom Mullen directed the committee's attention to maps of the County that show the census districts, the cities, and census defined places (CDPs). One map was displayed onscreen, and a second hard copy was placed on the tabletop. Different colored grease pens were distributed to each Chief of Staff to assist them in marking up the tabletop map.

The map onscreen was interactive. The Current Districts were shown in bold lines. Larry Ward recommended that the mapping alternatives begin with the Fourth District, as there is only one way to move in that District. Tom Mullen suggested that only census Tracts be used to rework the lines, as census Blocks were too small on this map.

As the work progressed, it became apparent that there was too much to be done in one meeting. Tom Mullen invited the Chiefs of Staff to meet with TLMA staff to work on alternatives. TLMA can then provide a variety of maps to share at the next meeting.

Tom Mullen agreed to schedule sessions with each Chief of Staff, individually, to do their research on the mapping alternatives, prior to the next meeting on April 12.

6. OTHER BUSINESS:

No other business was discussed at this time.

7. PUBLIC COMMENT FOR ITEMS NOT LISTED ON THE AGENDA:

Gilberto Esquivel, LULAC, asked whether he was in the right meeting. He thought he was attending a meeting for working on boundaries for assemblymen and senatorial districts. Larry Ward informed Mr. Esquivel that the State's Redistricting meeting would be held at the Orange Terrace Community Center that same evening.

8. ADJOURNMENT:

MOTION: Jay Orr moved to adjourn the meeting.

Seconded by: Verne Lauritzen

Motion carried unanimously

The next regular meeting of the Redistricting Steering Committee Meeting is set for Tuesday, April 12, 2011, at 2:00 p.m. With no further discussion, the Redistricting Steering Committee Meeting was adjourned at 12:18 p.m.

REDISTRICTING STEERING COMMITTEE MEETING

MINUTES OF MEETING

April 12, 2011
2 p.m.

County Executive Office
4080 Lemon Street, 4th Floor
Conference Room C

Members Present:

| | |
|-------------------|--------------------------------|
| Larry Ward | Chair, Assessor-Clerk Recorder |
| Jay Orr | Co-Chair, Executive Office |
| Michelle DeArmond | 4 th District |
| John Field | 2 nd District |
| Verne Lauritzen | 3 rd District |
| Dave Stahovich | 1 st District |

Members Absent:

| | |
|----------------|--------------------------|
| Robin Hastings | 5 th District |
|----------------|--------------------------|

Staff and Guests Present:

| | |
|---------------------|--------------------------------|
| Jeremy Clark | TLMA |
| Dean Deines | Executive Office |
| Dave Downey | The Californian |
| Erica Felci | The Desert Sun |
| Eric Gosch | Hemet-San Jacinto Action Group |
| Tina Grande | Executive Office |
| David Huff | County Counsel |
| George Johnson | TLMA |
| John Kopp | Eastvale Resident |
| Damian Laning | TLMA |
| Emily Lee | TLMA |
| JiHong McDermott | TLMA |
| Tom Mullen II | TLMA |
| Tori Richardson | Registrar of Voters |
| Ray Smith | Executive Office |
| Donna Katchadoorian | Executive Office |

1. CALL TO ORDER:

The Redistricting Steering Committee Meeting was called to order at 2:05 p.m. The roll call was conducted by Donna Katchadoorian.

2. APPROVAL OF MINUTES FOR THE "SPECIAL MEETING" ON MARCH 29, 2011:

MOTION: John Field moved to approve the March 29, 2011 minutes as stated.

Seconded by: Verne Lauritzen

Motion approved unanimously

3. PUBLIC FORUM UPDATE:

Chairman Larry Ward informed the committee that the meetings for the evening forums have been scheduled.

Tina Grande announced the following dates and locations of the three meetings:

- Wednesday, April 20, the CAC Board Chambers.
- Thursday, April 21, the French Valley Airport in the terminal.
- Wednesday, April 27, the Desert Hot Springs Senior Center.

Tina Grande noted that all the meetings will be held from 7 p.m. to 9 p.m. Setup time for staff will commence at 6 p.m. EDA has been assisting the Executive Office in setting up the meetings and there will be no cost to the county. EDA will be providing refreshments. The dates, times and locations for each meeting will be posted on the county redistricting website. The meetings will be recorded, but not transcribed.

Chairman Larry Ward requested that the Redistricting Steering Committee members try to attend all the meetings.

Chairman Larry Ward noted that he and Tom Mullen recently attended the State Redistricting Hearing in Orange Terrace. Legal issues and GIS programs were discussed. An attorney from Norco mentioned holding several forums with one in the desert and one in Riverside.

4. REVIEW PUBLIC SUBMITTALS:

Chairman Larry Ward mentioned receiving the e-mail notification for each submittal. One additional submittal came in late today. A copy of the submittal was distributed to the committee members.

Chairman Larry Ward suggested that since the information came in late that this item should be discussed at the next meeting. As submittals come in, Tina Grande will distribute copies to each committee member.

Jay Orr pointed out that it is not necessary to have comments and discussion on each submittal. The information will be distributed to the committee and if there are comments then the item can be discussed.

Chairman Larry Ward mentioned that it was determined at the March 29 meeting that each district would set up a meeting with Tom Mullen and his staff to discuss changes within their district.

Tom Mullen mentioned his meeting with each representative from the five districts. Each had an opportunity to build out independently an ideal district. Tom displayed the map on the table. Each independent effort has been included on an overlay to make one single map. The map depicts five independent builds of each district. These areas have been moved by one or more districts. The areas between Districts 4 and 5 shows a commonality of movement of the incorporated areas from the 5th District into the 4th District. Those suggestions have now been incorporated into the map and the border has been moved, which the map now shows the ramifications of that move. The same was done for the other districts. The interaction between the districts are now represented on the map. The areas on the map with hash marks show where they were moved by one district. Menifee was moved by both the 3rd District and the 5th District. Romoland, areas of Highgrove, and parts of the City of Riverside were left independent through individual efforts. These were left so the committee could determine how to move forward. The green areas on the map were moved twice. They were moved by one or more districts. They are sharing a border.

Tom Mullen provided the committee with a Working Assumptions chart, which shows each district as they look today, encompassing the green areas. The hashed areas are removed from District 1 through District 5. They are represented as unassigned. This shows the commonalities, and the areas that still need to be addressed.

Dave Stahovich pointed out that the chart was misleading. In District 1, the revised population is 410,936. The variance from the target is 6.2 percent and the change needed to reach the target is 437,928. Originally, the 1st District was 3.6 percent off. To reach the zero target, this chart shows District 1 is farther off than it was originally. Dave mentioned his meeting with Tom. The district remained the same, with the exception of picking up the Meadowbrook, the Good Hope area from the 5th District, and a small portion of the University City area, an unincorporated area between Moreno Valley/Riverside, along the 215 freeway.

Tom explained that there was consensus on the bordering districts shown in green. The non-consensus is shown in the hashed areas. The chart represents what is in the district. Tom indicated that the map shows the similarities and the differences between the individual efforts. The map is represented to allow you to review each district and provide input and discussion.

5. ACTIVITY: MAPPING OF DISTRICT ALTERNATIVES:

Michelle DeArmond mentioned District 4. The map shows the 4th and 5th Districts have consensus. The only logical way for the 4th District to add the 41,000 people would be to go to the west and pick up some incorporated areas, while leaving the 5th District with an unincorporated county piece in the Coachella Valley. This would keep Desert Hot Springs whole. Desert Hot Springs will flip from the 5th District to the 4th District. Michelle emphasized the importance of keeping communities of interest together.

Verne Lauritzen provided the committee with a couple of scenarios to consider. The first was to transfer Hemet/San Jacinto Valley into the 5th District, but the numbers were more than what was needed to lose and there would have been the need to make several adjustments to get that to work. The second is the area which includes Menifee/Canyon Lake and if that area stayed with the city boundaries of Menifee it was almost an exact wash. The object is to not separate the two.

Dave Stahovich explained that the 1st District needs to gain between 10,000 to 20,000 people. The 5th District needs to give up Highgrove, the Good Hope Meadowbrook area and Canyon Lake. The biggest concern is making major changes to the district if it is not necessary. Dave suggested the committee see a large map, which encompasses the whole county and then a district by district map that shows the current boundaries.

Chairman Larry Ward suggested that David Huff meet with Dave Stahovich to address any concerns. The chairman thanked Tom for meeting with each district and mentioned that the meetings have been very productive.

6. OTHER BUSINESS:

Tina Grande discussed the timeline. June 14 is the date that was previously set to present the plan or plans to the Board of Supervisors. The maps and submittals, along with the report, need to be completed by June 1 in order to ensure that the item is included on the board's agenda. Tina suggested the committee consider setting a deadline for presenting public submittals to the committee.

David Huff pointed out that the form 11 that is going to the June 14 board session is the form 11 that will be setting the matter for public hearing on June 28. The plans will need to be ready by June 14.

The Committee unanimously agreed that May 26, 2011 would be the deadline to receive submittals.

7. PUBLIC COMMENT FOR ITEMS NOT LISTED ON THE AGENDA:

John Kopp, an Eastvale resident, mentioned residing in supervisorial District 2. John mentioned the March 15 and March 29 minutes and the various deadline dates. He indicated that the website should include these important dates. The public comments should also be included. The website and the calendar should be more user friendly in

terms of expressing when these dates are coming up. John suggested holding a weekend meeting for people that work.

8. ADJOURNMENT:

MOTION: Chairman Larry Ward moved to adjourn the meeting.

Seconded by: Jay Orr seconded.

Motion carried unanimously

A "Special Meeting" of the Redistricting Committee is set for April 18, 2011 at 2:30 p.m. in the Riverside County Administrative Center, 4080 Lemon Street, 4th Floor, Conference Room C. With no further discussion, the Redistricting Steering Committee Meeting was adjourned at 2:57 p.m.

REDISTRICTING STEERING COMMITTEE MEETING

MINUTES OF MEETING

“Special Meeting”

April 18, 2011
2:30 p.m.

County Executive Office
4080 Lemon Street, 4th Floor
Conference Room C

Members Present:

Jay Orr
Michelle DeArmond
John Field
Robin Hastings
Verne Lauritzen

Co-Chair, Executive Office
4th District
2nd District
5th District
3rd District

Members Absent:

Larry Ward
Dave Stahovich

Chair, Assessor-Clerk Recorder
1st District

Staff and Guests Present:

Jeremy Clark
Dave Downey
Duane Gang
Tina Grande
Grace Guerriero
Nathan Guerriero
David Huff
Damian Laning
Emily Lee
Rebecca Ludwig
JiHong McDermott
Tom Mullen II
Ray Smith
Donna Katchadoorian

TLMA
The Californian
The Press-Enterprise
Executive Office
Resident
Resident
County Counsel
TLMA
TLMA
Resident
TLMA
TLMA
Executive Office
Executive Office

1. CALL TO ORDER:

Due to the absence of Chairman, Larry Ward, Co-Chairman, Jay Orr, called the meeting to order at 2:35 p.m. The roll call was conducted by Donna Katchadoorian.

2. APPROVAL OF MINUTES FOR APRIL 12, 2011:

MOTION: John Field moved to approve the April 12, 2011 minutes as stated.

Seconded by: Michelle DeArmond

Motion approved unanimously

3. PUBLIC FORUM PRESENTATION REVIEW:

Jay Orr noted for the committee the dates and locations of the upcoming public forums:

- Wednesday, April 20, the County Administrative Center, Board Chambers.
- Thursday, April 21, the Kay Cenicerros Senior Center, Magnolia Room.
- Wednesday, April 27, the Desert Hot Springs, Carl May Building.

Each of the meetings referenced above will be held at 7:00 p.m. The meeting dates, times, and locations have been posted on the website.

Tina Grande provided an overview of the agenda, which will be presented at each of the public forums:

- Call to order, Chairman Larry Ward.
- Introduction of the committee, Chairman Larry Ward.
- Legal overview of the county supervisorial redistricting, David Huff, from County Counsel.
- Tom Mullen, from TLMA, will share the population numbers and will highlight the map presentation. Tom will post five individual district maps as well as a large consolidated county map. Tom will explain the maps and answer any questions concerning the maps and the redistricting process. Tom will provide a PowerPoint Presentation, which will include the six maps.
- Questions from the public. Tina suggested taking a 15 minute recess so the public will have an opportunity to review the maps.
- Other business.
- Public comment for items not listed on the agenda.
- Adjournment.

The committee unanimously agreed to receive and file this item.

4. OTHER BUSINESS:

Verne Lauritzen thanked staff for relocating the meeting from the French Valley Airport to the Kay Cenicerros Senior Center. Verne wanted to ensure that the public is informed that the maps displayed at the meetings are proposals, and will not be presented as the final maps.

Tina Grande noted that the map title has been changed to "Draft Scenario 1." This should reinforce that the map is a scenario, and that it has not been officially approved.

Michelle DeArmond questioned whether the five unassigned areas, mentioned at the last meeting, had been resolved?

Tom Mullen replied, no.

Jay Orr pointed out that there has been no closure on those issues.

Nathan Guerriero, a citizen, questioned whether this meeting was to discuss redistricting for the districts or was this meeting to discuss the general plan?

Verne Lauritzen explained that this meeting was to discuss county supervisorial district boundaries.

Jay Orr suggested that Mr. Guerriero meet with Tom Mullen after the meeting. Tom would be available to answer his questions.

5. PUBLIC COMMENT FOR ITEMS NOT LISTED ON THE AGENDA:

No members of the public presented comments.

6. ADJOURNMENT:

A "Special" Redistricting Steering Committee Meeting is set for Wednesday, April 20 at 7:00 p.m. The meeting will take place at the County Administrative Center, 4080 Lemon Street, 1st Floor, in the Board Chambers. With no further discussion, the Redistricting Steering Committee Meeting was adjourned at 2:55 p.m.

MOTION: Robin Hastings moved to adjourn the meeting.

Seconded by: Verne Lauritzen

Motion carried unanimously

REDISTRICTING STEERING COMMITTEE MEETING

MINUTES OF MEETING

May 10, 2011
2 p.m.

County Executive Office
4080 Lemon Street, 4th Floor
Conference Room C

Members Present:

Larry Ward

Jay Orr

Michelle DeArmond

John Field

Robin Hastings

Verne Lauritzen

Dave Stahovich

Chair, Assessor-Clerk Recorder

Co-Chair, Executive Office

4th District

2nd District

5th District

3rd District

1st District

Staff and Guests Present:

Jeremy Clark

Dave Downey

Tina Grande

Grace Guerriero

Nathan Guerriero

David Huff

George Johnson

JiHong McDermott

Tom Mullen II

Cindie Perry

Tori Richardson

Donna Katchadoorian

TLMA

The Californian

Executive Office

Resident

Resident

County Counsel

TLMA

TLMA

TLMA

City of Riverside

Registrar of Voters

Executive Office

1. CALL TO ORDER:

The Redistricting Steering Committee Meeting was called to order at 2:05 p.m. The roll call was conducted by Donna Katchadoorian.

2. APPROVAL OF MINUTES FOR THE "SPECIAL" MEETING ON APRIL 18, 2011:

MOTION: Robin Hastings moved to approve the April 18, 2011 minutes as stated.

Seconded by: John Field

Motion approved unanimously

3. PUBLIC FORUM UPDATE:

Chairman Larry Ward discussed the three recent public forums. The public was given an opportunity to see the maps, ask questions, and meet one-on-one with the committee members. Larry thanked the committee members and staff who attended each forum. He also thanked EDA for their technical expertise and for the refreshments.

Chairman Larry Ward mentioned attending the California Citizens Redistricting Commission with Supervisor Buster last Thursday at the Norco City Hall. The Commission was created by California voters to draw state Congressional, Assembly, Senate and Board of Equalization Districts. Next month their first redistricting map will be released. The final lines will be drawn by August 15.

Michelle DeArmond added that the California Citizens Redistricting Commission will be meeting next Thursday in Palm Springs at 6 p.m., at the Palm Springs City Hall. Supervisor Benoit will be attending this meeting.

4. ACTIVITY: MAPPING OF DISTRICT ALTERNATIVES:

Chairman Larry Ward noted there are undecided areas that need to be addressed. Larry asked for the committee to express their ideas and/or comments.

A couple of maps were displayed on the table for the committee to voice their comments.

John Field mentioned his meeting with Tom Mullen. John indicated that he has not met with Dave Stahovich. John suggested that Highgrove be moved into the 2nd District, which consists of portions of the City of Riverside, on the east side of the 91 Freeway, from Arlington north to Highgrove. A portion of Box Springs Mountain would remain in the 5th District. Highgrove would no longer be included in the 5th District. John agreed to meet with Dave Stahovich to review the changes.

Minutes of Meeting

Jay Orr asked Tom Mullen if the two maps were available for the committee members to review? Jay noted the importance of keeping the committee on track.

Tom Mullen advised Jay and the committee that he did not have the maps loaded into the system. Tom asked his staff to load the electronic file into the system.

Tom Mullen mentioned that if Homeland is included in the 5th District, the population in the 5th District would go to 451,000. If Homeland is included in the 3rd District, the population in the 5th District would then be 439,000.

Michelle DeArmond explained that they worked hard trying to keep all the cities whole. She suggested the small area of Temecula west of I-15 in question should go into the 3rd District.

Jay Orr requested that TLMA redraw the map to add the small area of Temecula in the 3rd District, and include the 57 people in the 3rd District. Jay also noted that Canyon Lake should be included in the 1st District.

Dave Stahovich joined the meeting.

Jay Orr summarized for Dave that a portion of Temecula and an unincorporated area of Temecula were moved into the 3rd District. The committee felt that Temecula, as a city, should be included in the same district. In addition, Canyon Lake would be included in District 1, and Homeland should be included in District 3.

Dave Stahovich expressed concern whether this would preclude them from ever doing future annexations.

Verne Lauritzen stated that it doesn't preclude them from any future annexations. However, it would take the present boundaries and spheres, and would put them in the same supervisorial district.

Dave Stahovich pointed out that he would not support that.

Chairman Larry Ward emphasized that the purpose of this committee is to put together a map that balances the One Person One Vote Rule; and, which balances as equally as possible the population.

David Huff explained the statutory law, which is the elections code. Basically, the Board shall adjust the boundaries of any or all of the supervisorial districts of the county so the districts will be nearly equal in population. David noted that the local districts, at the county level, is where the U.S. Supreme Court established the under 10 percent maximum deviation limitation. Thus, 9.9 percent is the upper maximum that is used in terms of district deviation.

Dave Stahovich stated that there was no problem coming within the self-imposed range. Dave provided the committee with a copy of his map. If the issue is the 57 people then there is no problem. If there are 10 or 15 other changes, then cumulative there is a

problem. Based on the comments at each of the public hearings, the Eastside, Casa Blanca and Arlanza communities should stay in the same district. All are currently in the 1st District. Canyon Lake liked being in the 3rd District, because they are closely associated with issues in Lake Elsinore. According to the comments, the 1st District would pick up Canyon Lake, Meadowbrook and Good Hope. Dave mentioned areas west of the City of Perris and the 215 Freeway, pieces of University City and the unincorporated area between the City of Moreno Valley and Riverside. This would straighten out a connection from the existing boundary of the 2nd District in Highgrove. This would straighten out an original area that was in dispute in the 2nd District. He further stated that this would also straighten out Arlington Avenue to the Norte Vista area. With this scenario, the 1st District population would be 432,596 or 1.2 percent from the target. The 2nd District would come in at 429,896 or 1.8 percent from the target. The 1st District would then include Canyon Lake.

Dave Stahovich further pointed out keeping Victoria Woods and the Eastside in the same area. Testimony from the public requested keeping the two together for purposes of an ethnic balance in the Casa Blanca and Arlanza areas. These two groups are currently in the 1st District. With these changes, the total changes are one-quarter of the district. It makes sense to follow the freeway down to the existing boundaries.

John Field provided the committee with an additional map. The main difference between John's map and Dave's map is the shift within the City of Riverside. It takes into account property that has historically been in the Tavaglione family for many years. It also covers Chicago Avenue and a small piece of the University of California to Highgrove. The numbers would shift to 441,771 or 9/10 of one percent, which is less than one percent off target.

Robin Hastings pointed out that there appears to be some questions on the large map. The areas that have commonality should be added to the map and then the committee could discuss the areas that have variances.

Dave Stahovich indicated that this is why Meadowbrook and the Good Hope areas are included in the 5th District. Dave noted that he was trying to balance out the comments that he heard at all the hearings. Dave expressed concern that the 1st District would end up with more of the unincorporated areas. Dave mentioned the growth potential in the Highgrove area. The city limits are somewhat fixed. If the development is all in the cities, then the county has a limited role in city services, such as fire, sheriff, and the county hospital. Dave was trying to use the freeways and existing boundaries to follow all the city limits and still provide a small amount of unincorporated areas and growth potential at the northeast corner.

Tina Grande suggested that Tom Mullen prepare a revised map and she will distribute the map to the committee before the next meeting.

Robin Hastings suggested using different colors for each district.

Tom Mullen clarified for the committee that he would provide at the next meeting a single map overlay of the 1st and 2nd Districts with various colors.

Tina Grande emphasized that May 26 should be the last day to submit public comments.

Chairman Larry Ward pointed out that two additional meetings have been scheduled for May 17 and May 26. On June 1, the maps and all the data should be completed and ready to go to the Board of Supervisors on June 14.

Chairman Larry Ward reminded the committee that the goal is to lay out the issues and come back next week with solutions to those issues.

5. OTHER BUSINESS:

No other business was discussed at this time.

6. PUBLIC COMMENT FOR ITEMS NOT LISTED ON THE AGENDA:

Nathan Guerriero, a resident, thanked the committee for their hard work. He questioned when the county would be working on the general plan?

George Johnson mentioned that they are currently working on the general plan and would send him an invitation to the next meeting.

7. ADJOURNMENT:

A "Special" Redistricting Steering Committee Meeting is set for Tuesday, May 17, 2011 at 2 p.m., in the Riverside County Administrative Center, 4080 Lemon Street, 4th Floor, Executive Office, Conference Room C. With no further discussion, the Redistricting Steering Committee Meeting was adjourned at 2:55 p.m.

REDISTRICTING STEERING COMMITTEE MEETING

MINUTES OF MEETING

“Special Meeting”

May 17, 2011
2:00 p.m.

County Executive Office
4080 Lemon Street, 4th Floor
Conference Room C

Members Present:

Larry Ward
Jay Orr
Michelle DeArmond
John Field
Robin Hastings
Verne Lauritzen
Dave Stahovich

Chair, Assessor-Clerk Recorder
Co-Chair, Executive Office
4th District
2nd District
5th District
3rd District
1st District

Staff and Guests Present:

Jeremy Clark
Dave Downey
Duane Gang
Tina Grande
David Huff
George Johnson
Damian Laning
JiHong McDermott
Tom Mullen II
Donna Katchadoorian

TLMA
The Californian
The Press-Enterprise
Executive Office
County Counsel
TLMA
TLMA
TLMA
TLMA
Executive Office

1. CALL TO ORDER:

Chairman Larry Ward called the meeting to order at 2:10 p.m. The roll call was conducted by Donna Katchadorian.

2. APPROVAL OF MINUTES FOR MAY 10, 2011:

Chairman Larry Ward noted one minor change on Page 3, in the third paragraph. The reference to the 3rd District should be changed to the 5th District.

MOTION: Robin Hastings moved to approve the May 10, 2011 minutes with the correction noted.

Seconded by: Verne Lauritzen

Motion approved unanimously

3. ACTIVITY: MAPPING OF DISTRICT ALTERNATIVES:

Chairman Larry Ward mentioned at the last meeting, Tom Mullen was asked to provide a single map with an overlay showing the 1st and 2nd Districts in different colors.

Tom Mullen informed the committee that the map is being printed, and an electronic version will be presented once the equipment is available. Tom explained that the proposed map will show the combined areas.

John Field suggested that he meet with Dave Stahovich one more time to discuss minor changes. John indicated that they were pretty close.

Dave Stahovich advised the committee that they are making steps in the right direction.

Chairman Larry Ward announced that May 26 is the last day to submit public comment. Larry asked Tina if she had received any public comment this week.

Tina Grande stated that she had not received any additional public comment.

Chairman Larry Ward mentioned that the plan was to adopt a proposal(s) this week. Larry asked Tom if he would have enough time to prepare the maps.

Tom Mullen replied, yes. Tom pointed out if he could get the commonality for both districts, he would be able to provide maps by the close of business Wednesday, and would be able to send copies to the committee by Thursday.

Dave Stahovich explained that the map he presented last week hasn't changed. Dave indicated that John Field is working on a new map. Dave stated that this was the first time he has had a chance to review the revised map.

John Field explained the area in question. The 2nd District takes Highgrove and it goes to Chicago Avenue in the City of Riverside. The area includes part of the Citrus Groves near UCR, which two supervisors have a portion of the UCR property in their districts. It then follows Arroyo and Victoria Avenue to Arlington Avenue.

Dave Stahovich pointed out a couple of small differences. The population is 26,000 including Highgrove. This area is approximately 21,000 to 22,000. The other area is approximately 16,400.

Tom Mullen displayed the data charts for Districts 1 and 2.

Dave Stahovich advised that the total in District 1 goes to 433,500, and District 2 goes to 432,000 with a difference of 1,500.

Tina Grande noted a couple of items that needed to be addressed, which were to include all of Corona in the 2nd District, and to include the Retreat in the city boundary.

John Field informed the committee that the Retreat is currently split between two districts.

Dave Stahovich clarified that Proposal 1, is District 1, and Proposal 2, is District 2. The differences between the two maps are as follows: The 1st District is proposing that Arlington and everything north of Arlington Avenue go into the 2nd District. The 2nd District is proposing to leave that alone and go off Arlington to Victoria Avenue, north to Arroyo.

Jay Orr suggested that Dave Stahovich and John Field discuss the differences and come back next week with one or two maps.

The committee reached consensus on Districts 3, 4 and 5.

Chairman Larry Ward suggested holding a "Special" Meeting to resolve the differences between District 1 and District 2. The committee agreed to meet on Tuesday, May 24, 2011 at 8:30 a.m.

Tom Mullen explained that in order to prepare the maps by Tuesday morning, Tom would require input from Dave Stahovich and John Field by Monday morning.

4. PRESENTATION TO THE BOARD OF SUPERVISORS:

Chairman Larry Ward stated that the presentation is scheduled to go to the Board of Supervisors on June 14 with the proposal(s). Larry suggested they use the same format that was used during the public forums, which would include the proposal, an introduction, David Huff providing the legal presentation, and Tom Mullen explaining the proposal of the map(s) highlighting the areas that have changed.

David Huff clarified that the June 14 session will not be a public hearing. Staff recommendation would be to set the matter for public hearing two weeks later on June 28. At that point, the public hearing will be open. David explained that there needs to be at least two public hearings before the Board can take action on the plan. On June 14, the committee can present an overview of the plan(s) as recommended.

Tina Grande suggested that Chairman Larry Ward provide the introduction, David Huff present the legal portion, and Tom Mullen provide input on the maps. The information presented should be clear, concise and brief.

5. OTHER BUSINESS:

Dave Stahovich requested that Tom provide a couple of copies of the maps. Dave suggested that one map reference the east side street areas.

6. PUBLIC COMMENT FOR ITEMS NOT LISTED ON THE AGENDA:

No members of the public offered comments.

7. ADJOURNMENT:

A "Special" Redistricting Steering Committee Meeting is set for Tuesday, May 24, 2011 at 8:30 a.m., in the Riverside County Administrative Center, 4080 Lemon Street, 4th Floor, Executive Office, Conference Room C. With no further discussion, the Redistricting Steering Committee Meeting was adjourned at 2:41 p.m.

REDISTRICTING STEERING COMMITTEE MEETING FORUM 2011

MINUTES OF MEETING

April 27, 2011
7:00 p.m.

Desert Hot Springs, Carl May Bldg.
11777 West Drive
Desert Hot Springs, CA 92240

Members Present:

Larry Ward
Jay Orr
Michelle DeArmond
John Field
Robin Hastings
Dave Stahovich

Chair, Assessor-Clerk Recorder
Co-Chair, Executive Office
4th District
2nd District
5th District
1st District

Members Absent:

Verne Lauritzen

3rd District

Guests Present:

Anthony Cuca
Amalia Deaztlan
Erica Felci
Ron Gilbert
Tina Grande
Andrew Kotyuk
C.E. Krause
Yvonne Parks
Janet Pfeiffer
George Raymond
Anna Schuman

Resident of Desert Hot Springs
Resident
Desert Sun
Resident of Desert Hot Springs
County Executive Office
Vice Mayor for the City of San Jacinto
Resident of Desert Hot Springs
Mayor of Desert Hot Springs
Resident
Resident of Palm Springs
Resident

1. CALL TO ORDER:

The "Special" Redistricting Steering Committee Forum 2011 was called to order at 7:00 p.m. Co-Chair, Jay Orr, stated that so often the Pledge of Allegiance is taken for granted. Jay mentioned the soldiers serving in Afghanistan and seven of them were murdered today. Jay led the Pledge of Allegiance in honor of those soldiers serving in Afghanistan who gave their lives today. The roll call was conducted by Co-Chair, Jay Orr.

2. INTRODUCTION OF THE MEETING:

As Chairman of the County Redistricting Steering Committee Forum 2011, Chairman Larry Ward welcomed the guests and thanked them for attending the third of the three community meetings. The goal of these meetings is to provide information on the redistricting process, both from a legal, and a procedural perspective, provide an update of what has been completed so far, and most importantly, to provide Riverside County residents with an opportunity to provide input on the process.

Chairman Larry Ward mentioned the redistricting process occurs every 10 years based on the 2010 U.S. Census count. Riverside County is the fastest growing counties in the state, adding more than 644,000 residents from 2000 to 2010. To put that number in perspective, this was about 20,000 more people than the combined total of the second and third fastest growing counties in California, that being San Bernardino and Los Angeles.

Chairman Larry Ward mentioned that David Huff, County Counsel, will present the legal requirements for the Riverside County redistricting process. The Riverside County Executive Office established the Riverside County Redistricting Steering Committee. The first meeting was held in October 2010. The committee members are: Chairman Larry Ward, the County Assessor-Clerk and Recorder, the Co-Chair is Jay Orr, the Assistant County Executive Officer, all five supervisorial Chiefs of Staff. The County Executive Office, County Counsel, and the Transportation and Land Management Agency also support the committee. The Chairman thanked the Economic Development Agency for the refreshments in the back.

Chairman Larry Ward mentioned that the timeline for the U.S. Census data was released in the middle of March this year. In April, the first sets of the draft redistricting scenarios were prepared by the Steering Committee. This is the third of three public input outreach meetings. The first meeting was held in downtown Riverside. The second meeting is being held in Menifee and the third meeting is here, in Desert Hot Springs. May 26 is the last day that the public will be allowed to submit a proposal to the Steering Committee for consideration. On June 14 the committee will be submitting a proposal of the redistricting plan(s) to the Riverside Board of Supervisors. June 28 will be the first public hearing with the County Board of Supervisors. July 12 and 26 is the proposed second and third public hearings with the County Board of Supervisors. The

Supervisory Redistricting Plan to be approved by the Board at the conclusion of the last public hearing. In July and August of this year, County Survey will draft a legal description for the boundaries for the new supervisory districts. The introduction and subsequent adoption of the Riverside County Supervisory Redistricting Implementing Ordinance will occur in August and September by the Riverside County Board of Supervisors. David Huff, from County Counsel, will provide an overview of the legal and procedural perspective.

3. LEGAL OVERVIEW OF COUNTY SUPERVISORY REDISTRICTING:

David Huff, from County Counsel, noted that this is a process that involves the Board of Supervisors that comes up every 10 years in connection with the federal decennial census. The primary focus is only on county supervisory districts and adjusting the lines as appropriate to balance the districts based on population. Not to be confused with the redistricting effort with regard to statewide legislative offices, such as the assembly, the senate or congressional districts. That has now been addressed under Proposition 11, and was approved by the voters in November 2008, which created a California Citizens Redistricting Commission. The focus is on the County Supervisor Office borders and their district lines. The governing law in this area is straightforward under the California Elections Code 21500. Reading verbatim from the statutory language it states: "Following each federal decennial census, and using that census as a basis, the Board of Supervisors shall adjust the boundaries of any or all of the supervisory districts of the county so that the districts shall be as nearly and equal in population as may be."

Mr. David Huff mentioned that the Supreme Court has interpreted that requirement. It is essentially, the One Person One Vote Rule. It basically states that the district shall be as nearly equal in population as it may be so there is some degree of variance allowed. The Supreme Court interpretation has indicated that each district can be less than the 10 percent variance from another district. However, the goal and objective is to try and get the population counts as close as possible to one another in each of the districts.

David Huff discussed the second criteria. The process has to comply with the federal Voting Rights Act. There are literally 100s of cases that interpret the Federal Voter Rights Act, which was originally put in place during the 1960s. The Elections Code stated that when establishing the boundaries of the districts, the Board may give consideration to several factors. The first one is topography. Topography can be natural topography such as a ridgeline, a mountain range, or a river. It can also take the form of artificial topography, such as an interstate freeway. Geography is another factor to be considered. When the districts are positioned, how do they layout in comparison to one another.

David Huff described the following four factors, which are closely tied to one another: Cohesiveness, contiguity, integrity and compactness of territory. Contiguity, for example, is an expectation that the district all be connected as part of one, as opposed to having little islands spun off in different areas. Compactness is basically a center of

gravity where there is a defined shape to it that is not terribly elongated. David mentioned a famous case that came out in 1993, Shaw v. Reno, this case involved a congressional district boundary effort in North Carolina and it was challenged by the U.S. Department of Justice, because the state tried to formulate a district that used 160 miles of interstate freeway featuring tentacles reaching out in different directions. David indicated that shape does matter in the eyes of the courts.

David Huff continued and noted that there is a consideration for communities of interest of the district. Communities of interest have been interpreted by the Supreme Court of California as well as the U.S. Supreme Court. A provision of the California Constitution focuses on areas that are common to urban areas, rural areas, industrial areas, agricultural areas, and those that are common areas in which people share similar living standards, use the same transportation facilities, have similar work opportunities, have access to the same media of communication relevant to the election process. The city can be a community of interest, which can also include unincorporated recognized communities. For example, El Cerrito, Mead Valley, Mira Loma, and many other areas located within the county. Sometimes it is very difficult to meet this, because the community in question might be too large. A classic example is the City of Riverside, because of its large population at times has been shared between three county supervisors and in the last few years, it has been divided between two supervisorial districts. David noted that they try to keep communities of interest together rather than split them up. These are the standards that the Board of Supervisors has to consider before they adopt the plan.

David Huff discussed the timeline. The last day to present the proposed plan for the Steering Committee consideration is on May 26, 2011. After that date, if additional plans come in, they would go directly to the Board of Supervisors, because by that time the committee's work will have been done. The Board is still free to take other proposals that may come in or may develop at the public hearings. In the Elections Code there is a requirement to hold at least two public hearings before the Board can adopt a redistricting plan. The critical deadline for the Board of Supervisors is that they have to take final action and have the new districting boundaries final and in place prior to November 1. If they do not have them in place by November 1, then the process is taken out of their hands by state law in Elections Code 21502. The process would then shift to a Supervisorial Redistricting Committee, which is composed of the District Attorney, the County Assessor-Clerk and Recorder, and the elected County Superintendent of Schools. It is anticipated that the Board of Supervisors will be able to get the job done prior to November 1. David Huff completed his presentation.

4. POPULATION NUMBERS AND MAP PRESENTATION:

Tom Mullen, Deputy Director of Transportation and Land Management, shared with the group the impacts of the United States Census 2010 on Riverside County. To begin, the county grew at a rate far exceeding any other county in the state. It grew roughly 42 percent between the year 2000 and 2010, adding 644,254 people. Again, to reemphasize, Riverside County grew faster than the next two largest counties

combined. L.A. County added 325,000 people, San Bernardino County added approximately 300,000, and combined for a total of 625,000 people.

Tom Mullen presented several maps and discussed in detail the growth for each district. In looking at the districts in total, the 3rd District grew faster than the other four districts, but there was positive growth throughout the entire county, ranging from 28 percent in the 4th District to 66 percent in the 3rd District. Looking at each district independently, the 1st District grew at approximately 111,000 people at a rate of 35.7 percent. The growth was in the southern part of the district through the cities of Lake Elsinore, the unincorporated areas south of Riverside. The 2nd supervisorial district grew by 97,254 people. The areas of Eastvale and north of Corona grew the fastest rate in the county, with some areas growing at over 1,100 percent. There was a phenomenal amount of growth in a very short amount of time resulting in the new City of Eastvale. The 3rd District has over 517,000 residents. The most growth throughout the district was along both the 215 Freeway up through the unincorporated areas of the cities and communities of Hemet and San Jacinto. In the 4th District, throughout the Coachella Valley, there was growth in many of these areas. In total, the district grew by 87,026 people at a rate of 28.1 percent between 2000 and 2010. In the 5th District there was growth all along the 60/10 Freeway corridor through the pass area with heavy growth in the region east of Moreno Valley down toward Perris, totaling 142,809 people.

Tom Mullen noted that the growth is throughout the entire county with a need to shift the population to balance it out to reach the ideal of One Person One Vote. The ideal target for each district to reach is 437,928 people. The law allows a variance of 10 percent. The committee has self-imposed a five percent target range to work within. As the committee looked at reshaping the county districts, Tom discussed five maps drawn independent of each other. The last map is a culmination overlay of the five districts and their independent efforts. As the maps are redrawn, the goal is to reach the ideal target within the range. The cities have been drawn to be encompassed within a single district with the exception of the City of Riverside, which continues to be split between two supervisorial districts. Under the current set of scenarios, it was proposed to put each city in the county within a single district respecting those city boundaries and communities that they represent.

Tom Mullen emphasized the importance that each district not stand alone and independent, but share common borders. The hatched areas in green represent areas that are yet to be determined. This is only as a result of five independent efforts and this is the first set of scenarios that have been developed. It is anticipated that these areas will be resolved prior to going to the Board of Supervisors for consideration. Ultimately, the goal of the committee was to try and create a balance between the districts and again, recognize the need for the One Person One Vote. Tom Mullen concluded his presentation on the maps.

Chairman Larry Ward reintroduced the Redistricting Steering Committee. Besides Jay Orr and Chairman Larry Ward, the chairman introduced representing Supervisor Buster in the 1st District, Dave Stahovich; representing Supervisor Tavaglione in the 2nd District,

John Field; representing Supervisor Stone in the 3rd District, Verne Lauritzen, who was not present this evening. Representing Supervisor Benoit in the 4th District, Michelle DeArmond; and representing the 5th District, for Supervisor Ashley is Robin Hastings.

Chairman Larry Ward suggested that everyone take a 15-minute break to have an opportunity to review the maps.

Chairman Larry Ward recalled the meeting to order.

5. QUESTIONS FROM THE PUBLIC:

Mayor Yvonne Parks, from Desert Hot Springs, indicated that she has been very happy in the 5th District. She noted they have great representation by Supervisor Ashley. She did mention that she is open to whatever changes are necessary. The city is aware that changes are going to happen. She did express concern that within the next five years the city is proposing another annexation from the area of Pierson, west to 62, and south of the I-10 Freeway. If the annexation were to occur before the next census, it would result in two supervisors for Desert Hot Springs. She was very concerned that the City of Desert Hot Springs not be split. She indicated that she had discussed the matter with Robin Hastings and Robin is aware of her concerns. She thanked the committee for their consideration.

Michelle DeArmond noted that they would consider the information stated and would look at the numbers. Michelle indicated, at this point, they are pretty close to where they need to be. Michelle mentioned that they are trying to keep communities of interest together.

Robin Hastings mentioned her discussion with Mayor Parks, and that they would love to keep the 5th District in its current configuration, but that is not the purpose of redistricting. She mentioned in the 5th District there are portions of five different cities, due to growth and annexation since the last census. Robin agreed to look at the numbers again.

Mr. Andrew Kotyuk, Vice Mayor for the City of San Jacinto, wanted to reiterate the city's wishes to keep the San Jacinto Valley intact. He noted an upcoming joint committee meeting with both cities and the county. He is currently making plans economically to develop and work together. He emphasized the importance that both cities stay together. He appreciated the time and energy put into the redistricting processing, and he thanked the committee for taking the time to listen to their comments.

Chairman Larry Ward thanked Vice Mayor Kotyuk for having a representative attend all three meetings.

Mr. George Raymond mentioned that he was new to the process. He questioned who would be representing his district as the district is carved from Palm Springs down to

Palm Desert? He questioned who are the congressional representatives for each district?

Tom Mullen stated that what is proposed for the county districts is to align all of the Coachella Valley cities into the 4th District, which is currently represented by Supervisor John Benoit. This is a 10-year process and it is impossible to say who the representative will be in the future. By district, it is proposed to keep all the cities intact from Desert Hot Springs, Palm Springs and Cathedral City in the 4th District, as proposed in scenario 1. The 5th District will pick up the unincorporated communities and the Banning pass area, which is currently in the 5th District, represented by Supervisor Marion Ashley.

Tom Mullen replied to George Raymond's comments concerning the congressional representatives. Tom indicated that this committee doesn't have any input directly in these processes. Tom mentioned visiting one of the local meetings approximately six weeks ago and the representatives indicated that they would be coming back to Riverside/San Bernardino County in the future. You can share your comments with them either through the website, or directly.

Mr. Anthony Cuca, a Desert Hot Springs resident, supported the comments made by the Mayor Yvonne Parks. He thanked the committee for their hard work.

6. OTHER BUSINESS:

No other business was presented at this time.

7. PUBLIC COMMENT FOR ITEMS NOT LISTED ON THE AGENDA:

No other members of the public presented comments.

Chairman Larry Ward thanked everyone for coming out. The input is important to the committee to hear the comments from the people that we serve.

8. ADJOURN:

Adjournment to the regularly scheduled meeting set for May 10, 2011 at 2 p.m., in the Riverside County Administrative Center, 4080 Lemon Street, 4th Floor, Executive Office, Conference Room C.

REDISTRICTING STEERING COMMITTEE MEETING FORUM 2011

MINUTES OF MEETING

April 21, 2011
7:00 p.m.

Kay Cenicerros Senior Center – Palm Room
29995 Evans Road
Menifee (Sun City), CA 92586

Members Present:

| | |
|-------------------|--------------------------------|
| Larry Ward | Chair, Assessor-Clerk Recorder |
| Jay Orr | Co-Chair, Executive Office |
| Michelle DeArmond | 4 th District |
| Robin Hastings | 5 th District |
| Dave Stahovich | 1 st District |

Members Absent:

| | |
|-----------------|--------------------------|
| John Field | 2 nd District |
| Verne Lauritzen | 3 rd District |

Guests Present:

| | |
|-------------------|---|
| Roberta Alexander | Resident |
| Kelly Black | Bochanan Ingersoll |
| Betty Boures | Resident |
| John W. Corlett | Resident |
| Mary Craton | Council Member from Canyon Lake |
| Joe Daugherty | Resident |
| Wallace Edgerton | Mayor of the City of Menifee |
| Mike Emberton | Mayor of the City of San Jacinto |
| Eric Gosch | President, Hemet-San Jacinto Action Group |
| Tina Grande | County Executive Office |
| Nancy C. Horton | Council Member from Canyon Lake |
| Bob Johnson | City of Menifee |
| Louis Mazier | Resident |
| Lori Moss | City of Canyon Lake |
| Rosi Relrite | Resident |
| Barry Talbot | Mayor of the City of Canyon Lake |
| Julie Zimmerman | Resident |

1. CALL TO ORDER:

Chairman Larry Ward called the "Special" Redistricting Steering Committee Forum 2011 to order at 7:00 p.m. Co-Chair, Jay Orr, led the Pledge of Allegiance.

2. INTRODUCTION OF THE MEETING:

Chairman, Larry Ward, of the Riverside County Redistricting Steering Committee 2011, welcomed the guests and thanked them for attending the second of three community meetings. The goal of these meetings is to provide information on the redistricting process, both from a legal, and a procedural perspective, provide an update of what has been completed so far and, most importantly, to provide Riverside County residents with an opportunity to provide input on the process.

Chairman Larry Ward reported that redistricting occurs every 10 years based on the 2010 U.S. Census count. Riverside County is the fastest growing county in the state, adding more than 644,000 residents in the past 10 years. To put that number in perspective, this was about 20,000 more people than the combined total of the second and third fastest growing counties, that being San Bernardino and Los Angeles. The Riverside County Redistricting Steering Committee was established by the County Executive Office, and the first meeting was held in October of last year. The Committee membership includes: Chairman Larry Ward, the County Assessor-Clerk and Recorder, the Co-Chair is Jay Orr, the Assistant County Executive Officer, all five supervisorial Chiefs of Staff, including Dave Stahovich, 1st District; John Field, 2nd District; Verne Lauritzen, 3rd District; Michelle DeArmond, 4th District, and Robin Hastings from the 5th District. Also supporting this endeavor is the Executive Office, County Counsel and the Transportation and Land Management Agency.

Chairman Larry Ward discussed the redistricting timeline. The process must be completed by November 1 of this year. The Steering Committee was formed during the fall of 2010. In March, the U.S. Census data was released. In April of this year, the first set of drafts and redistricting scenario maps were prepared by the Steering Committee. The maps were displayed in the lobby for the public to review. This month, public input and outreach is now occurring. The next public meeting will be held in Desert Hot Springs next week. The last day to present the proposed plan for the Steering Committee consideration is on May 26, 2011. On June 14, the proposed presentation of the County Redistricting plan(s) will be presented to the Riverside County Board of Supervisors. He emphasized plan or plans. More than one plan may be submitted to the Board of Supervisors. On June 28, the first proposed public hearing will be held with the Riverside County Board of Supervisors. On July 12 and July 26, are the proposed second and third public hearings with the Riverside County Board of Supervisors. The supervisorial redistricting plans to be approved by the Board at the conclusion of the last public hearing. At each of these public hearings, the public is encouraged to attend and provide their input. In July and August of 2011, County Survey will draft a legal description for the boundaries of the new supervisorial districts.

The introduction and subsequent adoption of the Riverside County Supervisorial Redistricting Implementing Ordinance will occur in August and September by the Riverside County Board of Supervisors.

Robin Hastings, representing the 5th District, arrived at the meeting.

Chairman Larry Ward introduced David Huff, County Counsel. David Huff will provide the overview of the legal requirements, both on the state and federal level.

3. LEGAL OVERVIEW OF COUNTY SUPERVISORIAL REDISTRICTING:

David Huff, from County Counsel, noted that redistricting involves a process that the Board of Supervisors has to go through every 10 years when the decennial census data is released from the Federal Census Bureau. The primary focus is only on county supervisorial districts and adjusting the lines as appropriate to balance the districts based on population. Not to be confused with the redistricting effort that is underway with regard to statewide legislative districts, such as assembly, senate or for congressional districts. That is within the jurisdictions of the newly created California Citizens Redistricting Commission, which was established via Proposition 11. Proposition 11 was approved by the voters in November 2008. The governing law in this area is straightforward under the California Elections Code Section 21500. It provides the following: "Following each federal decennial census, and using that census as a basis, the Board shall adjust the boundaries of any or all of the supervisorial districts of the county so that the districts shall be as nearly and equal in population as may be."

David Huff mentioned that the Supreme Court has interpreted that requirement. It is essentially, the One Person One Vote Rule. The Supreme Court interpretation has indicated that each district can be less than the 10 percent variance from another district. It is always prudent to try to get the population counts as close as possible to one another in each of the districts.

David Huff mentioned another requirement that redistricting must comply with are applicable provisions of the Federal Voting Rights Act. The Federal Voting Rights Act was originally put in place in the mid 1960s. The Federal Voting Rights Act has been amended several times. The committee must be in compliance with the federal requirements.

David Huff discussed the Elections Code. In establishing the boundaries for each of the districts, the Board will give consideration to the following factors: The first one is topography. Topography can show up in a variety of ways, but typically, it divides between an artificial topographical feature, such as a freeway and a natural topographical feature, such as a river or mountain ranges. There can also be artificial topography, such as a freeway or an interstate. This can be used as a dividing point between the districts. Another factor is geography. How the district lays out in the overall scheme of the agency's jurisdiction.

David Huff described the following four factors, which are closely tied together: Cohesiveness, contiguity, integrity, and compactness of territory. Essentially, what these do is consider the shape of the district. Something that has a uniform or close to uniform shape is preferred to something that looks very convoluted. David mentioned a famous case that came out in 1993, Shaw v. Reno, this is a case that involved a congressional district boundary effort in North Carolina and it was challenged by the U.S. Department of Justice, because the state tried to formulate a district that used 160 miles of interstate freeway featuring tentacles reaching out in different directions. David indicated that shape does matter in the eyes of the courts.

David Huff pointed out that compactness, integrity, contiguity, and cohesiveness are very important factors. The last factor is community of interests of the districts. The California Supreme Court, as well as the Constitution, indicate that examples of such interest include commonalities to an urban area, a rural area, an industrial area, agricultural areas, and those areas in which people share similar living standards, such as the same transportation facilities, similar work opportunities, or have access to the same media of communications relevant to the election process. This also includes the cities. The city can be a community of interest, which can also include unincorporated recognized communities. For example, El Cerrito, Mira Loma, Mead Valley, Meadowbrook, and many other areas located within the county. In the past, the City of Riverside was so large that it had to be divided between three supervisors. For example, the City of L.A. was too large to be included within one supervisorial district. Those factors would need to be reviewed using the Elections Code as a guideline.

David Huff clarified that before the Board of Supervisors could adopt the redistricting plan, there is a requirement to hold at least two public hearings, which are forecast for the end of June and first of July. The Redistricting Plan must be approved and in place prior to November 1 of this year. If for some reason the Board of Supervisors is not able to accomplish the task before November 1, then there is a provision in state law Section 21502 of the Elections Code that provides that there be a Supervisorial Redistricting Commission composed of the District Attorney, the County Assessor, and the elected County Superintendent of Schools. This group would carry out the task that the Board of Supervisors attempted to accomplish. David Huff concluded the overview for the county supervisorial process.

4. POPULATION NUMBERS AND MAP PRESENTATION:

Tom Mullen, Deputy Director of Transportation and Land Management, shared with the group the impacts of the United States Census 2010 in Riverside County and the redistricting process. There has been an impressive amount of growth in relationship to the rest of the nation in the state as a whole. The map presented represents the population growth as a percentage throughout the various census tracts in Riverside. The county grew at a rate of 644,254 people in the past 10 years. Riverside County is just shy of 41.7 percent. Riverside County grew faster than San Bernardino County and Los Angeles County. Combined they grew 625,000 people.

Tom Mullen discussed the growth within each individual district. The 1st District grew by approximately 111,000 people. There has been significant growth in this part of the county as well as along the southern border of the City of Corona, along the 15 Freeway between Corona and Lake Elsinore with growth in the 1st District of 35.5 percent. In the 2nd District, Eastvale grew faster than any other area in the county. This area grew over 600 percent. Overall, the district grew by 97,000 people with 31.4 percent. The 3rd District, saw the greatest amount of growth in any single district. The district grew by 206,000 people. In the 4th District, there is growth throughout the Coachella Valley with the district increasing overall by 87,000. There has been double digit growth throughout the entire county. In the 5th Supervisorial District, there is strong growth between the cities of Moreno Valley, Calimesa, Banning and Beaumont. Strong growth occurred between the 215 Freeway through Perris and Moreno Valley, along the 60 corridor and through the pass. The district grew by 142,000 people or 47.2 percent.

There has been tremendous growth led by the 3rd District as of the 2010 U.S. Census. The smallest district is the 4th District at 386,579 people. Tom explained that the maps are culminated individual maps, which have been put together into a single map, to show areas where there is commonality. The areas, which are hatched, are areas that are not common between their individual efforts. This is the culmination of the individual efforts and is the first scenario in a draft format. These maps have been posted for the public to review. Tom indicated that he would be available during the break to answer any questions.

Chairman Larry Ward suggested everyone take a 15-minute break to look at the maps.

Chairman Larry Ward recalled the meeting to order.

5. QUESTIONS FROM THE PUBLIC:

Chairman Larry Ward introduced Ms. Nancy Horton.

Ms. Nancy Horton, Councilwoman from Canyon Lake, thanked the committee for holding the event. She mentioned she has been very happy in the 3rd District. She is aware that Supervisor Stone will have to lose some territory and population, and other supervisors will have to gain. Speaking as a citizen and as the Mayor Pro-Tem for the City of Canyon Lake, Nancy mentioned six cities that formed a coalition, called the Southwest Riverside Coalition, which includes the cities of Temecula, Canyon Lake, Murrieta, Wildomar, Lake Elsinore, and Menifee. She mentioned they have mutual concerns from Highway 15 and 215 corridors. She mentioned the hospitals in her area and economic concerns that are shared between Canyon Lake and Lake Elsinore. They currently share educational institutions. Most significantly, they share a recently opened animal shelter. As part of the City Council, Nancy is the Director of LESJWA. Canyon Lake is connected and contributes water to the City of Lake Elsinore. She mentioned she would be attending a water summit to take place in Lake Elsinore to share the history of Lake Elsinore from the Clean Water Act of 2000 to the present. Nancy mentioned if Canyon Lake were placed in any other district, they would have little in

common in the 5th District. Nancy requested that Canyon Lake be put in the 1st District, if they are moved from the 3rd District.

Mary Craton, Councilmember from Canyon Lake, stated that Nancy worded it extremely well. Mary wanted to emphasize commonality of interests. There is no commonality in the 5th District. Mary requested that they be placed in the 1st District.

Mr. Wallace Edgerton, Mayor of the City of Menifee, thanked the committee for their great job. Mr. Edgerton is a Professor of Political Science where he started teaching back in the 1960s. Nancy and Mary nailed it from the standpoint of community interest to the degree that there is a legal nexus. He strongly agreed with Nancy and Mary's comments. When Menifee was brought into incorporation, there was an agreement that Perris thought that they had with Menifee. He mentioned a couple of legal considerations with the City of Perris he is trying to resolve. He requested that Menifee stay in the 3rd District.

Mr. Eric Gosch, President of the Hemet-San Jacinto Action Group, was formed in the early 1980s. Eric thanked the committee for their hard work. Eric agreed that the maps of the communities are logical and that they keep communities of interest together. Hemet and San Jacinto Councils are the only two in the county to have passed resolutions stating their desire to remain together in one district. Eric appreciated the comments of the committee at their previous meetings. The primary focus is to stay in the same district.

Mr. Barry Talbot, Mayor of the City of Canyon Lake, spoke as the Mayor and resident of Canyon Lake. He indicated that Canyon Lake is a small city. They have worked very hard to establish a relationship with southwest Riverside cities and, as a small city, that effort has been extremely important to achieving the type of success that they have to make their community healthier and better for all of their citizens. If moved to the 5th District it would put them in a distinct disadvantage on any kind of negotiations that may come up in the future. Mayor Talbot emphasized that Canyon Lake remain in the 3rd District.

Mike Emberton, Mayor of the City of San Jacinto, echoed Mr. Gosch's comments. They are excited to stay together as they are sister cities and both are jointly working on many of the same efforts within the valley. He requested that the committee consider keeping the two cities together. He thanked the committee.

Mr. Louis Mazei, a resident of Menifee, concurred with Mayor Edgerton and the representatives from Canyon Lake. As a Menifee resident, he indicated that the City of Menifee would have more in common with Canyon Lake, Murrieta, and Temecula. He felt that San Jacinto and Hemet would want to be in the 5th District, because they share the Ramona Corridor with Perris and it connects to I-15. He recommended that Menifee stay in the 3rd District.

Robin Hastings indicated that his comments were considered and the population of San Jacinto, Hemet, and Soboba, who are all part of that resolution, was not a number that could be absorbed into the 5th District. The population is too large, and the 3rd District is the one that needs to lose the most population. Moving 100,000 people into the 5th District would mean it would not be balanced.

6. OTHER BUSINESS:

Dave Stahovich addressed the audience and noted how represented they were for a small city. Dave indicated that the comments that were raised will be given careful consideration. Dave thanked the group for coming out and thanked them for their comments.

7. PUBLIC COMMENT FOR ITEMS NOT LISTED ON THE AGENDA:

No other members of the public presented comments.

8. ADJOURN:

The meeting was adjourned to the "Special" Meeting set for April 27, 2011, at 7:00 p.m., at the Desert Hot Springs, Carl May Bldg., 11777 West Drive., Desert Hot Springs, CA 92204.

REDISTRICTING STEERING COMMITTEE MEETING FORUM 2011

MINUTES OF MEETING

April 20, 2011
7:00 p.m.

County Administrative Center
4080 Lemon Street
Board Chambers, 1st Floor
Riverside, CA 92501

Members Present:

Larry Ward
Jay Orr
Michelle DeArmond
John Field
Robin Hastings
Verne Lauritzen
Dave Stahovich

Chair, Assessor-Clerk Recorder
Co-Chair, Executive Office
4th District
2nd District
5th District
3rd District
1st District

Guests Present:

Tina Grande
Rick Hoffman
Alvin C. Horn
John Kopp
Morris Mendoza
Victoria Mendoza
Larry Smith

County Executive Office
Resident
Resident
Resident
Resident
Resident
Resident

1. CALL TO ORDER:

Chairman Larry Ward called the "Special" Redistricting Steering Committee Forum 2011 to order at 7:00 p.m. The roll call was conducted by Chairman Larry Ward.

2. INTRODUCTION OF THE MEETING:

As Chairman of the County Redistricting Steering Committee Forum 2011, Chairman, Larry Ward, welcomed the guests and thanked them for attending the first of three community meetings. The goal of these meetings is to provide information on the redistricting process, both from a legal, and procedural perspective, provide an update of what has been completed so far, and most importantly, to provide Riverside County residents with an opportunity to provide input on the process.

Chairman Larry Ward explained that the Redistricting process takes place every 10 years based on the 2010 U.S. Census. Riverside County is the fastest growing county in the state, which added over 644,000 residents in the past 10 years. To put that number in perspective, that is about 20,000 more people than the combined total of the second and third fastest growing counties, that being San Bernardino and Los Angeles. The guiding principles of the redistricting are set in state and federal law. David Huff will present legal requirements for the Riverside County Redistricting process.

Chairman Larry Ward indicated that the Riverside County Executive Office established the Riverside County Redistricting Steering Committee. The committee members are: Chairman Larry Ward, the County Assessor-Clerk and Recorder, the Co-Chair is Jay Orr, the Assistant County Executive Officer, all five supervisorial Chiefs of Staff, including Dave Stahovich, 1st District; John Field, 2nd District; Verne Lauritzen, 3rd District; Michelle DeArmond, 4th District, and Robin Hastings from the 5th District. Also supporting this endeavor is the Executive Office, County Counsel, and the Transportation and Land Management.

Chairman Larry Ward discussed the redistricting timeline. The Steering Committee was established during the fall of 2010, and the first meeting was held on October 26 of 2010. The U.S. Census data was released in March of 2011. In April of this year, the first set of drafts and redistricting scenario maps were prepared by the Steering Committee, and are displayed in the lobby for your review. This month, public input and outreach is occurring. The last day to present a proposed plan for the Steering Committee for consideration is May 26, 2011. On June 14, the proposed presentation of the County Redistricting plan(s) will be presented to the Riverside County Board of Supervisors. Chairman Larry Ward emphasized plan or plans. More than one plan may be submitted to the Board of Supervisors. On June 28, the first proposed public hearing will be held with the Riverside County Board of Supervisors. On July 12 and July 26, the proposed second and third public hearings will be held with the Riverside County Board of Supervisors. The supervisorial redistricting plans to be approved by the Board at the conclusion of the last public hearing. At each of these public hearings, the public is encouraged to attend and provide their input. In July and August of 2011, County

Survey will draft a legal description for the boundaries of the new supervisorial districts. In August and September, the introduction and subsequent adoption of the Riverside County Supervisorial Redistricting Implementing Ordinance by the Riverside County Board of Supervisors will take place. Chairman Larry Ward introduced David Huff, County Counsel. David Huff will provide the overview of the legal requirements, from the state and federal level.

3. LEGAL OVERVIEW OF COUNTY SUPERVISORIAL REDISTRICTING:

David Huff, from County Counsel, noted that redistricting involves a process that the Board of Supervisors has to go through every 10 years when the decennial census data is released from the Federal Census Bureau. The focus here is with regard to county supervisorial district lines and to clarify that this committee is not concerned with regard to statewide legislative offices, such as the assembly or the senate. This is governed under the Prop. 11, and was approved in November 2008, when the California Citizens Redistricting Commission was created. That is a separate process. The focus is on the County Supervisor Office borders and their district lines. As a result, the law in this area is fairly narrow under the California Elections Code 21500. The code provides the basis for the criteria in which the district lines are to be redrawn and it basically states: "Following each federal decennial census, and using that census as a basis, the Board shall adjust the boundaries of any or all of the supervisorial districts of the county so that the districts shall be as nearly and equal in population as may be."

David Huff presented another requirement that redistricting must be in compliance with the provisions of the Federal Voting Rights Act. When a county is looking at the redistricting process, they have to be in compliance with the requirements within the act and the cases which interpret the act. As it turns out, in the later portions of the Elections Code 21500, a list of a variety of factors is interpreted by many of these federal cases. The first factor being establishing the boundary of the districts, the Board must give consideration to topography. Topography can show up in a variety of ways, but typically it divides between an artificial topographical feature, such as a freeway and a natural topographical feature, such as a river or mountain range(s). Another factor is geography. Looking at the layout of the area to be divided, it would need to make sense from a geographical perspective.

David Huff described the following four factors, which are closely tied together: Cohesiveness, contiguity, integrity, and compactness of territory. Essentially, what these do is consider the shape of the district. Something that has a uniform or close to uniform share is preferred to something that looks convoluted. Compactness, integrity, contiguity, and cohesiveness are very important factors. David mentioned a famous case that came out in 1993, Shaw v. Reno, this is a case that involved a congressional district boundary effort in North Carolina and it was challenged by the U.S. Department of Justice, because the state tried to formulate a district that used 160 miles of interstate freeway featuring tentacles reaching out in different directions. David indicated that shape does matter in the eyes of the courts.

David pointed out that the last factor is community of interests of the districts. The California Supreme Court, as well as the Constitution, indicate that examples of such interest include commonalities to an urban area, a rural area, an industrial area, and agricultural areas. These areas are in which people share the similar living standards, use the same transportation facilities, similar work opportunities, or have access to the same media of communications relevant to the election process. This also includes the cities. The city can be a community of interest, which can also include unincorporated recognized communities. For example, El Cerrito, Mira Loma, Mead Valley and many other areas located in the county. In the past, the City of Riverside was so large that it had to be divided between three supervisors. For example, the City of L.A. was too large to be included within one supervisorial district. Those factors would need to be reviewed using the Elections Code as a guideline.

David Huff clarified that before the Board of Supervisors could adopt the redistricting plan, there is a requirement to hold at least two public hearings, which are forecast for the end of June and first of July. The redistricting plan must be approved and in place prior to November 1 of this year. If for some reason the Board of Supervisors is not able to accomplish the task before November 1, then there is a provision in state law Section 21502 of the Elections Code that provides that there be a Supervisorial Redistricting Commission composed of the District Attorney, the County Assessor, and the elected County Superintendent of Schools. This group would carry out the task that the Board of Supervisors attempted to accomplish. David Huff concluded the overview for the County Supervisorial process.

Chairman Larry Ward noted for the record, that 3rd District representative, Verne Lauritzen, arrived at the meeting.

Chairman Larry Ward introduced TLMA Deputy Director, Tom Mullen. Tom will provide the population numbers and the map presentation.

4. POPULATION NUMBERS AND MAP PRESENTATION:

Tom Mullen, Deputy Director of Transportation and Land Management, shared with the group the impacts of the United States Census 2010 in Riverside County and the redistricting process. The map presented the general changing population throughout the county with an overlay of the five existing supervisorial districts. The different colors depict the rate and growth by census tract. The county grew at a rate of 644,000 people, just shy of 42 percent. There has been a tremendous amount of growth throughout the county across all demographic groups, as well as all sectors of the county. The fastest growing district in the county was the 3rd District, growing at a rate of 66 percent and adding 206,000 people to the district. This brought the total population to over 517,000. The 1st District grew by approximately 35.5 percent. The non-White Hispanic Latino population has grown to 193,145 residents representing one of the largest single ethnic groups within the 1st District.

Tom Mullen noted that in the 2nd District, the fastest growth in the county was in the City of Eastvale along the northern border of Corona and Norco. This area grew faster than any other area in the county on a percentage basis. The non-white Hispanic Latino population is now being dominated in the 2nd District with roughly 200,000 residents.

Tom Mullen discussed the 3rd District and this district is the most populous district in the county. There are high rates of growth throughout the cities of San Jacinto, Hemet, Menifee, Murrieta, and the Temecula corridor along the I-215. What is interesting to note, is the tremendous growth on a percentage basis of the Asian population, growing almost 300 percent throughout the district. This has far overshadowed by the continued growth of the non-white Hispanic Latino population.

Tom Mullen indicated that the 4th District, is the largest district in the county, but relative to the other districts, this district saw less growth overall. There has been significant growth in minority population groups led by non-white Hispanic Latino reaching over 206,000 residents throughout the region. There is strong growth throughout the entire Coachella Valley in and around the cities along the primary corridors, which includes small growth out in the Blythe region.

Tom Mullen added that the 5th District, has had high density growth throughout the Banning/Beaumont pass area connecting into the City of Moreno Valley. There has been tremendous growth in the non-white Hispanic Latino population of over 240,000 residents. The current district boundaries are in-balanced in proportion to the residents to the core value of the One Person One Vote in equal representation. The districts need to amend their boundaries to better represent the population. Each district has prepared what they consider their first scenario.

Tom presented the map, which represents all five districts as well as the overlay of the consolidation of those individual efforts. Tom noted that the green areas are areas that are "proposed" moving between the districts under the current scenario. The hatched areas on the map are areas, which are unassigned to a district and continue to evolve. Each of the six maps were posted in the hallway for public viewing. Tom mentioned that during the break, he would be available to answer any questions.

Chairman Larry Ward explained that this is the first draft of what will be several maps. Chairman Larry Ward suggested everyone take a 10 or 15-minute break to have an opportunity to look at the maps and to allow the public the opportunity to ask questions.

Chairman Larry Ward recalled the meeting to order.

5. QUESTIONS FROM THE PUBLIC:

Chairman Larry Ward introduced Mr. John Kopp.

Mr. John Kopp, an Eastvale resident, mentioned the Voting Rights Act. He indicated that he knew the Citizens Redistricting Commission for the state, and the Voting Rights

Act Council. He questioned whether the county had engaged in this service? If so, who, and if not, why?

David Huff responded briefly stating that the county has not retained any outside law firm to advise the committee on county redistricting or received advice on the federal Voting Rights Act. David Huff, from County Counsel, has been representing the county and has advised the committee on matters that will ultimately go before the Board of Supervisors.

John Kopp questioned if a member of the public or group did challenge an issue that the advisory committee was recommending, would this committee seek advice from a specialist?

David Huff replied that it would be somewhat speculatively at this point. It would depend on the nature of the challenge and the complexity. The county would always have available options to see appropriate resources if necessary.

John Kopp suggested that the committee look at the Corona-Norco Unified School District. He thought that the entire school district was within the 2nd District. If it is not, there leaves a small section of Temescal Canyon. He suggested if the small section needs to be moved, the committee should consider keeping the entire school district within the 2nd District.

Mr. Morris Mendoza, a resident, commented that he was in favor of keeping the City of Riverside all in one district. Knowing your representative is important. He mentioned the importance of having a personal contact. The City of Riverside proposed a grant called GRACE. GRACE is a gang intervention grant, which targets areas of Eastvale, Casa Blanca and Arlanza. Under the 1st District, Eastside is part of the 1st District. The three communities are one of the most disadvantaged areas in the country. He suggested that these areas stay in one district.

Dave Stahovich assured Mr. Mendoza that the Arlanza, Casa Blanca and Eastside are each in the 1st District.

Mr. Larry Smith, City of Hemet Council Member, stated that he was happy with the first draft of the maps. He was diligently fighting to keep the cities of San Jacinto and Hemet together. He appreciated the support from Supervisor Stone's Office. This is a difficult task and he admired and appreciated all the hard work. He is fearful as the scenarios pop up that there may be some temptation to divide communities of interest. He is happy with his representation under Supervisor Stone.

6. OTHER BUSINESS:

No other business was discussed at this time.

7. PUBLIC COMMENT FOR ITEMS NOT LISTED ON THE AGENDA:

No other members of the public presented comments.

8. ADJOURN:

Adjournment to the "Special" Redistricting Steering Committee Forum set for Thursday, April 21, 2011, at 7:00 p.m., at the Kay Cenicerros Senior Center – Palm Room, 29995 Evans Road, Menifee (Sun City), CA 92586.

REDISTRICTING STEERING COMMITTEE MEETING

MINUTES OF MEETING

“Special Meeting”

May 24, 2011
8:30 a.m.

County Executive Office
4080 Lemon Street, 4th Floor
Conference Room C

Members Present:

Larry Ward
Jay Orr
Michelle DeArmond
John Field
Robin Hastings
Verne Lauritzen
Dave Stahovich

Chair, Assessor-Clerk Recorder
Co-Chair, Executive Office
4th District
2nd District
5th District
3rd District
1st District

Staff and Guests Present:

Jeremy Clark
Tina Grande
Duane Gang
David Huff
George Johnson
Emily Lee
JiHong McDermott
Tom Mullen II
Donna Katchadoorian

TLMA
Executive Office
The Press-Enterprise
County Counsel
TLMA
TLMA
TLMA
TLMA
Executive Office

1. CALL TO ORDER:

The Redistricting Steering Committee Meeting was called to order at 8:30 a.m. The roll call was conducted by Donna Katchadoorian.

2. ACTIVITY: MAPPING OF DISTRICT ALTERNATIVES:

TLMA presented a District 1 and District 2 proposed overlap - working map, which illustrated the modifications requested from the last meeting.

Dave Stahovich announced that he is requesting that two maps be presented to the Board of Supervisors. Dave addressed an area in the 1st District that required a minor revision. The area is east of Chicago by UCR, which includes a piece of the medical school, from Citrus to Canyon Crest. The area that needs to be split is from Iowa to Chicago, which would include Cranford Avenue. Dave noted that this area was not included on his map. Also, not included was a portion of Temescal Canyon, the Retreat, which should be included in the 1st District.

John Field stated that he was okay with taking a portion of the area back.

Dave Stahovich pointed out that he was in agreement with the other areas. Dave mentioned an unincorporated area pocket, a subdivision in the 1st District, and a small piece in the 2nd District. Dave clarified that he would keep the Casa Blanca and Arlanza areas. The Eastside is the area that needs to be modified.

John Field agreed with the modification of the small piece in the subdivision.

Tina Grande clarified for the committee. Dave is requesting two maps be presented to the Board of Supervisors, but they are not the maps presented today. The map should include a slight modification on both maps. Tina mentioned cleaning up a small area on Dave's map and showing a pull back of UCR on John's map. The Retreat would remain in the 1st District. Tina explained that new maps would be presented to the committee at the Thursday meeting with the changes included.

MOTION: Co-Chair Jay Orr moved that TLMA make the necessary corrections and present the revised two maps at the next meeting.

Seconded by: John Field

Motion carried unanimously

3. OTHER BUSINESS:

No other business was discussed at this time.

4. PUBLIC COMMENT FOR ITEMS NOT LISTED ON THE AGENDA:

No members of the public presented public comments.

5. **ADJOURNMENT TO THE "SPECIAL" MEETING SET FOR THURSDAY, MAY 26, 2011 AT 2 P.M., IN THE RIVERSIDE COUNTY ADMINISTRATIVE CENTER, 4080 LEMON STREET, 4TH FLOOR, CONFERENCE ROOM C.**

The next "Special" Redistricting Steering Committee Meeting is set for Thursday, May 26, 2011 at 2 p.m. With no further discussion, Chairman Larry Ward adjourned the Redistricting Steering Committee Meeting at 8:44 a.m.

REDISTRICTING STEERING COMMITTEE MEETING

MINUTES OF MEETING

“Special Meeting”

May 26, 2011
2:00 p.m.

County Executive Office
4080 Lemon Street, 4th Floor
Conference Room C

Members Present:

Larry Ward
Michelle DeArmond
John Field
Robin Hastings
Dave Stahovich

Chair, Assessor-Clerk Recorder
4th District
2nd District
5th District
1st District

Members Absent:

Verne Lauritzen
Jay Orr

3rd District
Co-Chair, Executive Office

Staff and Guests Present:

Jeremy Clark
Tina Grande
David Huff
Damian Laning
JiHong McDermott
Tom Mullen II
Tori Richardson
Donna Katchadoorian

TLMA
Executive Office
County Counsel
TLMA
TLMA
TLMA
Registrar of Voters
Executive Office

1. **CALL TO ORDER:**

The Redistricting Steering Committee Meeting was called to order at 2:05 p.m. The roll call was conducted by Donna Katchadoorian.

2. **APPROVAL OF MINUTES FOR APRIL 20, 2011, APRIL 21, 2011 AND APRIL 27, 2011 PUBLIC FORUMS, AND MINUTES FOR THE "SPECIAL" MEETINGS ON MAY 17, 2011 AND MAY 24, 2011:**

MOTION: Robin Hastings moved to approve all the minutes.

Seconded by: Dave Stahovich

Motion carried unanimously

3. **ACTIVITY: MAPPING OF DISTRICT ALTERNATIVES:**

Chairman Larry Ward mentioned receiving an e-mail from the Menifee Action Group requesting that the City of Menifee stay together. Chairman Larry Ward advised the committee that Tina Grande received a Joint Resolution from the City of Moreno Valley and the City of Perris. Tina provided copies to the committee for their review.

Tom Mullen presented the committee with two revised scenario maps.

Dave Stahovich suggested that Tom Mullen label the maps as Proposal A and Proposal B, and highlight the areas to show the differences.

The committee discussed the revised maps.

Chairman Larry Ward requested that once the maps have been revised that copies be sent out to the committee for review.

Dave Stahovich pointed out that the changes should be noted by using a different color.

Tom Mullen emphasized that he wasn't trying to show the differences between the two, but show the differences overall.

Chairman Larry Ward clarified that Tom Mullen would label the maps Proposal A and Proposal B, and highlight the areas of contention in different colors.

Dave Stahovich informed the committee that the maps presented today would remain the same. A third map would be presented to show the two areas in question.

MOTION: Dave Stahovich moved to approve the mapping of alternatives once the two existing maps were labeled as Proposal A and Proposal B, provide a third map to show the differences between the two maps, and present three maps to the Board of Supervisors on June 14, 2011.

Seconded by: John Field

Motion carried unanimously

4. PRESENTATION TO THE BOARD OF SUPERVISORS:

Tina Grande informed the committee that she has been working with David Huff on the Form 11 for the June 14, 2011 Board of Supervisors' meeting. Staff is currently working on the outline. Tina advised the committee that Chairman Larry Ward, David Huff and Tom Mullen will be the speakers at the presentation to the Board of Supervisors.

5. OTHER BUSINESS:

No other business was presented at this time.

6. PUBLIC COMMENT FOR ITEMS NOT LISTED ON THE AGENDA:

No members of the public presented public comments.

Chairman Larry Ward indicated that meetings have been scheduled through September. The committee will meet on an "as needed" basis depending on the feedback from the Board of Supervisors.

David Huff reported that the Board of Supervisors could require the committee to review an item. If this is the case, the committee would hold a special meeting or meet on one of the pre-set regular monthly meetings scheduled through September. If there is no need for a meeting, a cancellation notice would be distributed.

Chairman Larry Ward thanked the committee for all their hard work.

7. ADJOURNMENT:

The Redistricting Steering Committee Meeting was adjourned at 2:16 p.m.

July 17, 2011

Our Lady of Guadalupe Shrine
 2858 Ninth Street, Riverside, CA 92507

Dear Clerk of the Board,

I support Bob Buster's Plan A for redistricting the County of Riverside and I urge the Riverside County Board of Supervisors to support Plan A as well.

Yo apoyo el Plan A propuesto por Bob Buster para cambiar los distritos supervísales del condado de Riverside y imploro que los supervisores del Condado de Riverside también apoyen al Plan A.

| NAME (NOMBRE) | ADDRESS (DIRECCION) | SIGNATURE (FIRMA) |
|------------------------------|--|---------------------------------|
| LAURA REYES Mariana Romo | 4346 Angelo St 3736 Muir Ave. | LAURA HERNANDEZ Mariana Romo |
| Genoveva Gutierrez | 2464 11th st | Genoveva Gutierrez |
| Alma Flores | 2210 10th St Riverside CA | Alma Flores |
| Lucia Miranda | 4290 Bondini Ave Riverside | Lucia Miranda |
| Efren Rosales | 7950 Golway ct. Riverside | Efren Rosales |
| RAMON MATA Ramon Villanar | 1761 7th St Riverside 22069 Wagonwheel Dr | Ramon Villanar |
| Elizabeth Bancelos | 4216 Angelo St Riverside | Elizabeth Bancelos |
| Maria Rivera | 4346 Angelo | MARIA RIVERA |
| Manuel Duran | 26963 5700KIE JEIK | Manuel Duran |
| Ether Pennington | P.O. Box 3444 | Ether Pennington |
| Rose Calhoun | 909 215 9894 | Rose Calhoun |
| | | |
| | | |
| | | |
| | | |
| | | |
| | | |
| | | |
| | | |
| | | |
| | | |
| | | |
| | | |

712 - 2011
 9.1
 2011-7-108782 . 8/16/2011 9.1



MEMORANDUM

EXECUTIVE OFFICE, COUNTY OF RIVERSIDE

Bill Luna

County Executive Officer

Jay E. Orr

Assistant County Executive Officer

TO: Board of Supervisors

FROM: Tina Grande, Principal Management Analyst
David Huff, Deputy County Counsel
Tom Mullen II, Deputy Director TLMA

DATE: July 20, 2011

RE: Submittals for the Public Record

This memo is an addendum to the previous memo dated June 28, 2011 and contains two additional attachments for review and consideration by the Board of Supervisors, to be included as part of the public record.

Attachment 8 includes summary tables based on the census source data for Proposal C. Also included in the attachments is a map depicting the racial and ethnic majority per census block, topography for such proposal, and population over age 18, based on the source data.

Attachment 9 is an exhibit of the boundary differences in the three proposals as well as some additional detailed exhibit material relating to Proposal C. Proposal A promotes the inclusion of an area north of Arlington Avenue within the City of Riverside to the Second District, while retaining an area between the 91 freeway and the University of California, Riverside (UCR) within the First District. Proposal B is the inverse of A, moving the area generally between the 91 freeway and UCR into the Second District and retaining the area north of Arlington Avenue in the First District. Proposal C retains the area north of Arlington Avenue in the First District and includes the unincorporated area generally south of Highgrove between the City of Riverside and the City of Moreno Valley in the First District. Proposal C includes the area of Highgrove in the Second District as well as including the Victoria Avenue neighborhoods south of the 91 freeway that are generally bordered by Mary Street, Victoria, Arlington and Chicago Avenues as well as the arroyo that forms part of the Victoria Country Club golf course in the Second District.

Attachments

~~JUL 26 2011~~ 9.32 8/16/2011 9.1

Attachment 8

Public Law File (PL94-171) Demographic Data Applied to Proposal C

Source: 2010 Census Redistricting Data (Public Law 94-171) Summary File

| RACE [71] | DISTRICT | | | | | COUNTY TOTALS |
|---|------------|-----------------|------------|-------------|---------------|---------------|
| | 1 | 2 | 3 | 4 | 5 | |
| UNIVERSE: Total population | BOB BUSTER | JOHN TAVAGLIONE | JEFF STONE | JOHN BENOIT | MARION ASHLEY | |
| Total: | SUPERVISOR | | | | | |
| Population of one race: | | | | | | |
| White alone | 439,914 | 422,529 | 439,602 | 441,795 | 445,801 | 2,189,641 |
| Black or African American alone | 417,720 | 402,179 | 414,822 | 427,791 | 422,465 | 2,084,977 |
| American Indian and Alaska Native alone | 260,140 | 242,704 | 302,704 | 293,032 | 236,567 | 1,335,147 |
| Asian alone | 26,933 | 25,134 | 22,334 | 13,602 | 52,540 | 140,543 |
| Native Hawaiian and Other Pacific Islander alone | 4,387 | 3,834 | 6,198 | 4,014 | 5,277 | 23,710 |
| Some Other Race alone | 31,514 | 34,418 | 29,496 | 11,861 | 23,179 | 130,468 |
| Two or More Races: | 1,485 | 1,427 | 1,542 | 502 | 1,918 | 6,874 |
| White; Black or African American | 93,291 | 94,662 | 52,548 | 104,780 | 102,984 | 448,235 |
| White; American Indian and Alaska Native | 22,194 | 20,350 | 24,780 | 14,004 | 23,336 | 104,664 |
| White; Asian | 20,578 | 18,900 | 22,627 | 13,219 | 21,498 | 96,822 |
| White; Native Hawaiian and Other Pacific Islander | 2,663 | 2,101 | 3,319 | 1,552 | 3,385 | 13,020 |
| White; Some Other Race | 2,439 | 2,123 | 3,222 | 1,662 | 2,393 | 11,839 |
| Black or African American; American Indian and Alaska Native | 3,913 | 3,672 | 6,131 | 1,867 | 3,298 | 18,881 |
| Black or African American; Asian | 542 | 468 | 703 | 198 | 438 | 2,349 |
| Black or African American; Native Hawaiian and Other Pacific Islander | 7,538 | 7,330 | 5,815 | 5,793 | 7,521 | 33,997 |
| Black or African American; Some Other Race | 448 | 286 | 376 | 155 | 695 | 1,960 |
| Black or African American; American Indian and Alaska Native | 413 | 413 | 632 | 118 | 721 | 2,297 |
| Black or African American; Native Hawaiian and Other Pacific Islander | 92 | 50 | 83 | 28 | 168 | 421 |
| Black or African American; Some Other Race | 764 | 612 | 555 | 497 | 1,132 | 3,560 |
| American Indian and Alaska Native; Asian | 97 | 127 | 116 | 65 | 123 | 528 |
| American Indian and Alaska Native; Native Hawaiian and Other Pacific Islander | 16 | 25 | 20 | 21 | 18 | 100 |
| American Indian and Alaska Native; Some Other Race | 407 | 372 | 351 | 326 | 447 | 1,903 |
| Asian; Native Hawaiian and Other Pacific Islander | 320 | 303 | 429 | 156 | 252 | 1,460 |
| Asian; Some Other Race | 730 | 842 | 731 | 619 | 737 | 3,659 |
| Native Hawaiian and Other Pacific Islander; Some Other Race | 196 | 176 | 144 | 162 | 170 | 848 |
| Population of three races: | 1,499 | 1,345 | 1,966 | 738 | 1,661 | 7,209 |
| White; Black or African American; American Indian and Alaska Native | 361 | 320 | 413 | 170 | 450 | 1,714 |
| White; Black or African American; Asian | 143 | 132 | 255 | 59 | 200 | 789 |
| White; Black or African American; Native Hawaiian and Other Pacific Islander | 42 | 22 | 53 | 4 | 53 | 174 |
| White; Black or African American; Some Other Race | 161 | 118 | 140 | 66 | 170 | 655 |
| White; American Indian and Alaska Native; Asian | 135 | 91 | 192 | 65 | 137 | 620 |
| White; American Indian and Alaska Native; Native Hawaiian and Other Pacific Islander | 12 | 8 | 30 | 9 | 6 | 65 |
| White; American Indian and Alaska Native; Some Other Race | 98 | 102 | 143 | 67 | 108 | 518 |
| White; Asian; Native Hawaiian and Other Pacific Islander | 233 | 193 | 372 | 110 | 182 | 1,090 |
| White; Asian; Some Other Race | 172 | 200 | 193 | 105 | 163 | 833 |
| White; Native Hawaiian and Other Pacific Islander; Some Other Race | 38 | 51 | 39 | 22 | 19 | 169 |
| Black or African American; American Indian and Alaska Native; Asian | 25 | 15 | 26 | 5 | 28 | 99 |
| Black or African American; American Indian and Alaska Native; Native Hawaiian and Other Pacific Islander | 6 | 5 | 1 | 1 | 13 | 26 |
| Black or African American; American Indian and Alaska Native; Some Other Race | 14 | 11 | 10 | 4 | 31 | 70 |
| Black or African American; American Indian and Alaska Native; Native Hawaiian and Other Pacific Islander | 11 | 17 | 14 | 15 | 27 | 84 |
| Black or African American; Asian; Native Hawaiian and Other Pacific Islander | 16 | 22 | 35 | 5 | 28 | 106 |
| Black or African American; Asian; Some Other Race | 0 | 4 | 1 | 5 | 3 | 13 |
| American Indian and Alaska Native; Native Hawaiian and Other Pacific Islander; Some Other Race | 5 | 5 | 10 | 1 | 1 | 22 |
| American Indian and Alaska Native; Asian; Native Hawaiian and Other Pacific Islander | 6 | 10 | 8 | 7 | 13 | 44 |
| American Indian and Alaska Native; Asian; Some Other Race | 1 | 3 | 15 | 7 | 1 | 27 |
| American Indian and Alaska Native; Native Hawaiian and Other Pacific Islander; Some Other Race | 20 | 16 | 16 | 11 | 28 | 91 |
| Asian; Native Hawaiian and Other Pacific Islander; Some Other Race | 100 | 99 | 163 | 43 | 152 | 557 |
| Population of four races: | 28 | 34 | 37 | 10 | 46 | 155 |
| White; Black or African American; American Indian and Alaska Native; Asian | 10 | 4 | 12 | 0 | 9 | 35 |
| White; Black or African American; American Indian and Alaska Native; Native Hawaiian and Other Pacific Islander | 26 | 7 | 14 | 13 | 47 | 107 |
| White; Black or African American; Asian; Native Hawaiian and Other Pacific Islander | 5 | 7 | 37 | 7 | 10 | 66 |
| White; Black or African American; Asian; Some Other Race | 6 | 13 | 15 | 4 | 3 | 41 |

Public Law File (PL94-171) Demographic Data Applied to Proposal C

Source: 2010 Census Redistricting Data (Public Law 94-171) Summary File

| | DISTRICT | 1 | 2 | 3 | 4 | 5 | COUNTY TOTALS |
|---|------------|------------|-----------------|------------|-------------|---------------|---------------|
| | SUPERVISOR | BOB BUSTER | JOHN TAVAGLIONE | JEFF STONE | JOHN BENOIT | MARION ASHLEY | |
| White; Black or African American; Native Hawaiian and Other Pacific Islander; Some Other Race | | 2 | 1 | 0 | 0 | 7 | 10 |
| White; American Indian and Alaska Native; Asian; Native Hawaiian and Other Pacific Islander | | 12 | 16 | 22 | 6 | 15 | 71 |
| White; American Indian and Alaska Native; Asian; Some Other Race | | 4 | 6 | 5 | 1 | 3 | 19 |
| White; American Indian and Alaska Native; Native Hawaiian and Other Pacific Islander; Some Other Race | | 1 | 0 | 0 | 1 | 2 | 4 |
| White; Asian; Native Hawaiian and Other Pacific Islander; Some Other Race | | 5 | 6 | 20 | 1 | 1 | 33 |
| Black or African American; American Indian and Alaska Native; Asian; Native Hawaiian and Other Pacific Islander | | 1 | 1 | 0 | 0 | 3 | 5 |
| Black or African American; American Indian and Alaska Native; Asian; Some Other Race | | 0 | 0 | 0 | 0 | 4 | 5 |
| Black or African American; American Indian and Alaska Native; Native Hawaiian and Other Pacific Islander; Some Other Race | | 0 | 0 | 0 | 0 | 1 | 1 |
| Black or African American; Asian; Native Hawaiian and Other Pacific Islander; Some Other Race | | 0 | 4 | 0 | 0 | 0 | 4 |
| American Indian and Alaska Native; Asian; Native Hawaiian and Other Pacific Islander; Some Other Race | | 0 | 0 | 0 | 0 | 0 | 1 |
| Population of five races: | | 14 | 5 | 24 | 4 | 24 | 71 |
| White; Black or African American; American Indian and Alaska Native; Asian; Native Hawaiian and Other Pacific Islander | | 9 | 5 | 22 | 4 | 11 | 51 |
| White; Black or African American; American Indian and Alaska Native; Asian; Some Other Race | | 0 | 0 | 2 | 0 | 9 | 11 |
| White; Black or African American; American Indian and Alaska Native; Native Hawaiian and Other Pacific Islander; Some Other Race | | 5 | 0 | 0 | 0 | 0 | 5 |
| White; Black or African American; Asian; Native Hawaiian and Other Pacific Islander; Some Other Race | | 0 | 0 | 0 | 0 | 0 | 0 |
| White; American Indian and Alaska Native; Asian; Native Hawaiian and Other Pacific Islander; Some Other Race | | 0 | 0 | 0 | 0 | 4 | 4 |
| Black or African American; American Indian and Alaska Native; Asian; Native Hawaiian and Other Pacific Islander; Some Other Race | | 0 | 0 | 0 | 0 | 0 | 0 |
| Population of six races: | | 3 | 1 | 0 | 0 | 1 | 5 |
| White; Black or African American; American Indian and Alaska Native; Asian; Native Hawaiian and Other Pacific Islander; Some Other Race | | 3 | 1 | 0 | 0 | 1 | 5 |
| HISPANIC OR LATINO, AND NOT HISPANIC OR LATINO BY RACE [73] | | | | | | | |
| Universe: Total population | | 439,914 | 422,529 | 439,602 | 441,795 | 445,801 | 2,189,641 |
| Total: | | 202,380 | 206,846 | 135,233 | 229,243 | 221,555 | 995,257 |
| Hispanic or Latino | | 237,534 | 215,683 | 304,369 | 212,552 | 224,246 | 1,194,384 |
| Not Hispanic or Latino: | | 227,435 | 207,016 | 290,576 | 207,552 | 213,695 | 1,146,274 |
| Population of one race: | | 167,929 | 146,734 | 235,909 | 181,886 | 136,810 | 869,068 |
| White alone | | 25,014 | 23,472 | 20,596 | 12,025 | 49,716 | 130,823 |
| Black or African American alone | | 1,717 | 1,412 | 1,738 | 1,033 | 2,495 | 10,931 |
| American Indian and Alaska Native alone | | 30,654 | 33,476 | 28,581 | 11,023 | 22,187 | 125,921 |
| Native Hawaiian and Other Pacific Islander alone | | 1,244 | 1,212 | 1,316 | 387 | 1,690 | 5,849 |
| Some Other Race alone | | 877 | 710 | 605 | 693 | 797 | 3,682 |
| Two or More Races: | | 10,099 | 8,667 | 13,793 | 5,000 | 10,551 | 48,110 |
| Population of two races: | | 9,214 | 7,932 | 12,610 | 4,621 | 9,494 | 43,871 |
| White; Black or African American | | 2,138 | 1,624 | 2,694 | 1,134 | 2,768 | 10,358 |
| White; American Indian and Alaska Native | | 1,520 | 1,166 | 2,176 | 1,046 | 1,430 | 7,338 |
| White; Asian | | 3,285 | 3,063 | 5,166 | 1,506 | 2,643 | 15,663 |
| White; Native Hawaiian and Other Pacific Islander | | 426 | 371 | 593 | 156 | 341 | 1,887 |
| White; Some Other Race | | 297 | 282 | 272 | 190 | 232 | 1,273 |
| Black or African American; American Indian and Alaska Native | | 359 | 235 | 300 | 132 | 606 | 1,632 |
| Black or African American; Asian | | 364 | 384 | 577 | 93 | 638 | 2,056 |
| Black or African American; Native Hawaiian and Other Pacific Islander | | 82 | 39 | 78 | 22 | 149 | 370 |
| Black or African American; Some Other Race | | 144 | 88 | 85 | 40 | 195 | 552 |
| American Indian and Alaska Native; Asian | | 56 | 86 | 86 | 29 | 71 | 328 |
| American Indian and Alaska Native; Native Hawaiian and Other Pacific Islander | | 13 | 12 | 18 | 19 | 7 | 69 |
| American Indian and Alaska Native; Some Other Race | | 5 | 9 | 18 | 13 | 22 | 67 |
| Asian; Native Hawaiian and Other Pacific Islander | | 287 | 283 | 380 | 131 | 211 | 1,292 |
| Asian; Some Other Race | | 188 | 268 | 156 | 102 | 170 | 884 |
| Native Hawaiian and Other Pacific Islander; Some Other Race | | 50 | 22 | 11 | 8 | 11 | 102 |
| Population of three races: | | 829 | 680 | 1,081 | 355 | 975 | 3,920 |
| White; Black or African American; American Indian and Alaska Native | | 275 | 243 | 300 | 130 | 352 | 1,300 |
| White; Black or African American; Asian | | 122 | 113 | 200 | 38 | 167 | 640 |
| White; Black or African American; Native Hawaiian and Other Pacific Islander | | 34 | 19 | 43 | 4 | 51 | 151 |
| White; Black or African American; Some Other Race | | 30 | 11 | 23 | 15 | 29 | 108 |

Public Law File (PL94-171) Demographic Data Applied to Proposal C

Source: 2010 Census Redistricting Data (Public Law 94-171) Summary File

| | DISTRICT | 1 | 2 | 3 | 4 | 5 | |
|---|------------|------------|-----------------|------------|-------------|---------------|---------------|
| | SUPERVISOR | BOB BUSTER | JOHN TAVAGLIONE | JEFF STONE | JOHN BENOIT | MARION ASHLEY | COUNTY TOTALS |
| White; American Indian and Alaska Native; Asian | | 93 | 50 | 112 | 40 | 109 | 404 |
| White; American Indian and Alaska Native; Native Hawaiian and Other Pacific Islander | | 8 | 8 | 22 | 4 | 4 | 46 |
| White; American Indian and Alaska Native; Some Other Race | | 7 | 8 | 16 | 11 | 13 | 55 |
| White; Asian; Native Hawaiian and Other Pacific Islander | | 189 | 153 | 289 | 78 | 149 | 858 |
| White; Asian; Some Other Race | | 28 | 23 | 25 | 9 | 24 | 109 |
| White; Native Hawaiian and Other Pacific Islander; Some Other Race | | 0 | 1 | 5 | 1 | 1 | 8 |
| Black or African American; American Indian and Alaska Native; Asian | | 18 | 12 | 14 | 5 | 18 | 67 |
| Black or African American; American Indian and Alaska Native; Native Hawaiian and Other Pacific Islander | | 5 | 4 | 0 | 1 | 11 | 21 |
| Black or African American; American Indian and Alaska Native; Some Other Race | | 1 | 6 | 1 | 0 | 11 | 19 |
| Black or African American; Asian; Native Hawaiian and Other Pacific Islander | | 10 | 11 | 11 | 13 | 23 | 68 |
| Black or African American; Asian; Some Other Race | | 7 | 6 | 8 | 3 | 5 | 29 |
| Black or African American; Native Hawaiian and Other Pacific Islander; Some Other Race | | 1 | 2 | 0 | 0 | 2 | 4 |
| American Indian and Alaska Native; Asian; Native Hawaiian and Other Pacific Islander | | 1 | 5 | 7 | 1 | 0 | 14 |
| American Indian and Alaska Native; Asian; Some Other Race | | 1 | 1 | 1 | 0 | 2 | 4 |
| American Indian and Alaska Native; Native Hawaiian and Other Pacific Islander; Some Other Race | | 1 | 0 | 1 | 0 | 0 | 2 |
| Asian; Native Hawaiian and Other Pacific Islander; Some Other Race | | 0 | 4 | 3 | 2 | 4 | 13 |
| Population of four races: | | 54 | 52 | 92 | 23 | 75 | 296 |
| White; Black or African American; American Indian and Alaska Native; Asian | | 18 | 24 | 23 | 7 | 32 | 104 |
| White; Black or African American; American Indian and Alaska Native; Native Hawaiian and Other Pacific Islander | | 8 | 3 | 11 | 0 | 5 | 27 |
| White; Black or African American; American Indian and Alaska Native; Some Other Race | | 12 | 3 | 9 | 5 | 13 | 42 |
| White; Black or African American; Asian; Native Hawaiian and Other Pacific Islander | | 4 | 7 | 26 | 4 | 9 | 50 |
| White; Black or African American; Asian; Some Other Race | | 2 | 9 | 1 | 3 | 0 | 15 |
| White; Black or African American; Native Hawaiian and Other Pacific Islander; Some Other Race | | 0 | 0 | 0 | 0 | 1 | 1 |
| White; American Indian and Alaska Native; Asian; Native Hawaiian and Other Pacific Islander | | 9 | 5 | 18 | 3 | 10 | 45 |
| White; American Indian and Alaska Native; Asian; Some Other Race | | 0 | 0 | 0 | 0 | 0 | 0 |
| White; American Indian and Alaska Native; Native Hawaiian and Other Pacific Islander; Some Other Race | | 0 | 0 | 0 | 1 | 1 | 2 |
| White; Asian; Native Hawaiian and Other Pacific Islander; Some Other Race | | 1 | 0 | 4 | 0 | 1 | 6 |
| Black or African American; American Indian and Alaska Native; Asian; Native Hawaiian and Other Pacific Islander | | 0 | 0 | 0 | 0 | 2 | 2 |
| Black or African American; American Indian and Alaska Native; Asian; Some Other Race | | 0 | 0 | 0 | 0 | 1 | 1 |
| Black or African American; American Indian and Alaska Native; Native Hawaiian and Other Pacific Islander; Some Other Race | | 0 | 0 | 0 | 0 | 0 | 0 |
| Black or African American; Asian; Native Hawaiian and Other Pacific Islander; Some Other Race | | 0 | 1 | 0 | 0 | 0 | 1 |
| American Indian and Alaska Native; Asian; Native Hawaiian and Other Pacific Islander; Some Other Race | | 0 | 0 | 0 | 0 | 0 | 0 |
| Population of five races: | | 2 | 3 | 10 | 1 | 6 | 22 |
| White; Black or African American; American Indian and Alaska Native; Asian; Native Hawaiian and Other Pacific Islander | | 2 | 3 | 10 | 1 | 2 | 18 |
| White; Black or African American; American Indian and Alaska Native; Asian; Some Other Race | | 0 | 0 | 0 | 0 | 0 | 0 |
| White; Black or African American; American Indian and Alaska Native; Native Hawaiian and Other Pacific Islander; Some Other Race | | 0 | 0 | 0 | 0 | 0 | 0 |
| White; Black or African American; Asian; Native Hawaiian and Other Pacific Islander; Some Other Race | | 0 | 0 | 0 | 0 | 0 | 0 |
| White; American Indian and Alaska Native; Asian; Native Hawaiian and Other Pacific Islander; Some Other Race | | 0 | 0 | 0 | 0 | 0 | 0 |
| White; American Indian and Alaska Native; Asian; Native Hawaiian and Other Pacific Islander; Some Other Race | | 0 | 0 | 0 | 0 | 4 | 4 |
| Population of six races: | | 0 | 0 | 0 | 0 | 0 | 0 |
| White; Black or African American; American Indian and Alaska Native; Asian; Native Hawaiian and Other Pacific Islander; Some Other Race | | 0 | 0 | 0 | 0 | 1 | 1 |
| White; Black or African American; American Indian and Alaska Native; Asian; Native Hawaiian and Other Pacific Islander; Some Other Race | | 0 | 0 | 0 | 0 | 1 | 1 |
| RACE FOR THE POPULATION 18 YEARS AND OVER [71] | | | | | | | |
| Universe: Total population 18 years and over | | | | | | | |
| Total: | | 316,904 | 299,245 | 310,725 | 332,155 | 310,504 | 1,569,533 |
| Population of one race: | | 305,080 | 288,654 | 299,601 | 324,117 | 298,488 | 1,515,940 |
| White alone | | 194,410 | 179,439 | 224,055 | 235,223 | 175,806 | 1,008,933 |
| Black or African American alone | | 20,033 | 18,470 | 15,084 | 10,178 | 35,766 | 99,531 |
| American Indian and Alaska Native alone | | 3,108 | 2,817 | 4,082 | 2,803 | 3,651 | 16,461 |
| Asian alone | | 26,061 | 26,012 | 21,617 | 9,398 | 17,941 | 101,029 |
| Native Hawaiian and Other Pacific Islander alone | | 1,044 | 1,028 | 1,052 | 385 | 1,276 | 4,785 |
| Some Other Race alone | | 60,424 | 60,888 | 33,711 | 66,130 | 64,048 | 285,201 |
| Two or More Races: | | 11,824 | 10,591 | 11,124 | 8,038 | 12,016 | 53,593 |
| Population of two races: | | 11,055 | 9,977 | 10,352 | 7,619 | 11,203 | 50,206 |

Public Law File (PL94-171) Demographic Data Applied to Proposal C

Source: 2010 Census Redistricting Data (Public Law 94-171) Summary File

| DISTRICT | 1 | 2 | 3 | 4 | 5 | |
|---|------------|-----------------|------------|-------------|---------------|---------------|
| SUPERVISOR | BOB BUSTER | JOHN TAVAGLIONE | JEFF STONE | JOHN BENOIT | MARION ASHLEY | COUNTY TOTALS |
| White; Black or African American | 1,027 | 788 | 1,018 | 570 | 1,193 | 4,596 |
| White; American Indian and Alaska Native | 1,679 | 1,431 | 2,039 | 1,182 | 1,593 | 7,924 |
| White; Asian | 2,023 | 1,737 | 2,488 | 984 | 1,658 | 8,890 |
| White; Native Hawaiian and Other Pacific Islander | 272 | 229 | 321 | 126 | 234 | 1,182 |
| White; Some Other Race | 4,110 | 4,041 | 2,844 | 3,487 | 4,212 | 18,694 |
| Black or African American; American Indian and Alaska Native | 295 | 209 | 221 | 118 | 460 | 1,303 |
| Black or African American; Asian | 201 | 162 | 250 | 46 | 308 | 967 |
| Black or African American; Native Hawaiian and Other Pacific Islander | 39 | 17 | 22 | 17 | 62 | 157 |
| Black or African American; Some Other Race | 297 | 245 | 219 | 194 | 440 | 1,395 |
| American Indian and Alaska Native; Asian | 66 | 76 | 66 | 47 | 60 | 315 |
| American Indian and Alaska Native; Native Hawaiian and Other Pacific Islander | 9 | 15 | 10 | 10 | 7 | 51 |
| American Indian and Alaska Native; Some Other Race | 261 | 264 | 193 | 203 | 289 | 1,210 |
| Asian; Native Hawaiian and Other Pacific Islander | 243 | 224 | 273 | 136 | 188 | 1,064 |
| Asian; Some Other Race | 410 | 442 | 317 | 388 | 405 | 1,960 |
| Native Hawaiian and Other Pacific Islander; Some Other Race | 123 | 97 | 71 | 113 | 94 | 498 |
| Population of three races: | 701 | 573 | 707 | 388 | 731 | 3,100 |
| White; Black or African American; American Indian and Alaska Native | 221 | 176 | 204 | 115 | 263 | 979 |
| White; Black or African American; Asian | 47 | 33 | 60 | 14 | 51 | 205 |
| White; Black or African American; Native Hawaiian and Other Pacific Islander | 8 | 5 | 9 | 1 | 13 | 36 |
| White; Black or African American; Some Other Race | 53 | 36 | 31 | 27 | 44 | 191 |
| White; American Indian and Alaska Native; Asian | 66 | 38 | 67 | 35 | 64 | 270 |
| White; American Indian and Alaska Native; Some Other Race | 4 | 5 | 14 | 7 | 3 | 33 |
| White; American Indian and Alaska Native; Native Hawaiian and Other Pacific Islander | 62 | 52 | 56 | 43 | 49 | 262 |
| White; American Indian and Alaska Native; Some Other Race | 124 | 89 | 135 | 61 | 80 | 489 |
| White; Asian; Native Hawaiian and Other Pacific Islander | 52 | 62 | 52 | 38 | 68 | 272 |
| White; Asian; Some Other Race | 16 | 21 | 19 | 12 | 9 | 77 |
| Black or African American; American Indian and Alaska Native; Some Other Race | 11 | 7 | 12 | 4 | 17 | 51 |
| Black or African American; American Indian and Alaska Native; Asian | 1 | 3 | 1 | 0 | 8 | 13 |
| Black or African American; American Indian and Alaska Native; Native Hawaiian and Other Pacific Islander | 8 | 7 | 4 | 1 | 23 | 43 |
| Black or African American; Asian; Native Hawaiian and Other Pacific Islander | 5 | 4 | 7 | 2 | 5 | 23 |
| Black or African American; Asian; Some Other Race | 4 | 10 | 13 | 5 | 9 | 41 |
| Black or African American; Native Hawaiian and Other Pacific Islander; Some Other Race | 0 | 0 | 1 | 4 | 2 | 11 |
| American Indian and Alaska Native; Asian; Native Hawaiian and Other Pacific Islander | 3 | 5 | 5 | 1 | 0 | 14 |
| American Indian and Alaska Native; Asian; Some Other Race | 6 | 6 | 5 | 4 | 8 | 29 |
| American Indian and Alaska Native; Native Hawaiian and Other Pacific Islander; Some Other Race | 1 | 0 | 4 | 7 | 1 | 13 |
| Asian; Native Hawaiian and Other Pacific Islander; Some Other Race | 9 | 10 | 8 | 7 | 14 | 48 |
| Population of four races: | 60 | 39 | 56 | 27 | 69 | 251 |
| White; Black or African American; American Indian and Alaska Native; Asian | 14 | 16 | 14 | 7 | 20 | 71 |
| White; Black or African American; American Indian and Alaska Native; Some Other Race | 7 | 4 | 4 | 0 | 5 | 17 |
| White; Black or African American; American Indian and Alaska Native; Native Hawaiian and Other Pacific Islander | 17 | 4 | 8 | 10 | 23 | 62 |
| White; Black or African American; American Indian and Alaska Native; Some Other Race | 2 | 2 | 7 | 5 | 1 | 17 |
| White; Black or African American; Asian; Some Other Race | 4 | 6 | 5 | 0 | 1 | 16 |
| White; Black or African American; Native Hawaiian and Other Pacific Islander; Some Other Race | 1 | 1 | 1 | 0 | 3 | 5 |
| White; American Indian and Alaska Native; Asian; Native Hawaiian and Other Pacific Islander | 8 | 6 | 12 | 3 | 8 | 37 |
| White; American Indian and Alaska Native; Asian; Some Other Race | 3 | 1 | 0 | 1 | 1 | 6 |
| White; American Indian and Alaska Native; Native Hawaiian and Other Pacific Islander; Some Other Race | 1 | 0 | 0 | 1 | 2 | 4 |
| White; Asian; Native Hawaiian and Other Pacific Islander; Some Other Race | 3 | 0 | 5 | 0 | 1 | 9 |
| Black or African American; American Indian and Alaska Native; Some Other Race | 0 | 0 | 0 | 0 | 3 | 3 |
| Black or African American; American Indian and Alaska Native; Asian; Some Other Race | 0 | 0 | 1 | 0 | 1 | 2 |
| Black or African American; American Indian and Alaska Native; Native Hawaiian and Other Pacific Islander; Some Other Race | 0 | 0 | 0 | 0 | 0 | 0 |
| Black or African American; Asian; Native Hawaiian and Other Pacific Islander; Some Other Race | 0 | 2 | 0 | 0 | 0 | 2 |
| American Indian and Alaska Native; Asian; Native Hawaiian and Other Pacific Islander; Some Other Race | 0 | 0 | 0 | 0 | 0 | 0 |
| Population of five races: | 8 | 1 | 9 | 4 | 12 | 34 |
| White; Black or African American; American Indian and Alaska Native; Asian; Native Hawaiian and Other Pacific Islander | 6 | 1 | 9 | 4 | 7 | 27 |

Public Law File (PL94-171) Demographic Data Applied to Proposal C

Source: 2010 Census Redistricting Data (Public Law 94-171) Summary File

| | DISTRICT | 1 | 2 | 3 | 4 | 5 | COUNTY TOTALS |
|---|------------|------------|-----------------|------------|-------------|---------------|---------------|
| | SUPERVISOR | BOB BUSTER | JOHN TAVAGLIONE | JEFF STONE | JOHN BENOIT | MARION ASHLEY | |
| White; Black or African American; American Indian and Alaska Native; Asian; Some Other Race | | 0 | 0 | 0 | 0 | 4 | 4 |
| White; Black or African American; American Indian and Alaska Native; Native Hawaiian and Other Pacific Islander; Some Other Race | | 2 | 0 | 0 | 0 | 0 | 2 |
| White; Black or African American; Asian; Native Hawaiian and Other Pacific Islander; Some Other Race | | 0 | 0 | 0 | 0 | 0 | 0 |
| White; American Indian and Alaska Native; Asian; Native Hawaiian and Other Pacific Islander; Some Other Race | | 0 | 0 | 0 | 0 | 1 | 1 |
| Black or African American; American Indian and Alaska Native; Asian; Native Hawaiian and Other Pacific Islander; Some Other Race | | 0 | 0 | 0 | 0 | 0 | 0 |
| Population of six races: | | 0 | 1 | 0 | 0 | 1 | 2 |
| White; Black or African American; American Indian and Alaska Native; Asian; Native Hawaiian and Other Pacific Islander; Some Other Race | | 0 | 1 | 0 | 0 | 1 | 2 |
| HISPANIC OR LATINO, AND NOT HISPANIC OR LATINO BY RACE FOR THE POPULATION 18 YEARS AND OVER [73] | | | | | | | |
| Universe: Total population 18 years and over | | | | | | | |
| Total: | | 316,904 | 299,245 | 310,725 | 332,155 | 310,504 | 1,569,533 |
| Hispanic or Latino | | 128,646 | 131,819 | 82,855 | 145,657 | 136,866 | 625,843 |
| Not Hispanic or Latino: | | 188,258 | 167,426 | 227,870 | 186,498 | 173,638 | 943,690 |
| Population of one race: | | 182,537 | 162,743 | 221,414 | 183,515 | 168,039 | 918,248 |
| White alone | | 135,187 | 117,136 | 182,301 | 163,095 | 112,750 | 710,469 |
| Black or African American alone | | 19,001 | 17,631 | 14,201 | 9,407 | 34,387 | 94,627 |
| American Indian and Alaska Native alone | | 1,294 | 1,126 | 2,486 | 1,330 | 1,854 | 8,090 |
| Asian alone | | 25,550 | 25,476 | 21,136 | 8,883 | 17,367 | 98,412 |
| Native Hawaiian and Other Pacific Islander alone | | 901 | 902 | 926 | 315 | 1,155 | 4,199 |
| Some Other Race alone | | 604 | 472 | 364 | 485 | 526 | 2,451 |
| Two or More Races: | | 5,721 | 4,683 | 6,456 | 2,983 | 5,599 | 25,442 |
| Population of two races: | | 5,239 | 4,322 | 5,951 | 2,756 | 5,065 | 23,333 |
| White; Black or African American | | 845 | 623 | 866 | 436 | 1,023 | 3,793 |
| White; American Indian and Alaska Native | | 1,158 | 885 | 1,486 | 850 | 1,052 | 5,431 |
| White; Asian | | 1,803 | 1,535 | 2,225 | 816 | 1,415 | 7,794 |
| White; Native Hawaiian and Other Pacific Islander | | 232 | 199 | 287 | 108 | 196 | 1,022 |
| White; Some Other Race | | 197 | 170 | 157 | 123 | 150 | 797 |
| Black or African American; American Indian and Alaska Native | | 253 | 179 | 190 | 106 | 417 | 1,145 |
| Black or African American; Asian | | 176 | 153 | 237 | 41 | 282 | 889 |
| Black or African American; Native Hawaiian and Other Pacific Islander | | 35 | 17 | 21 | 14 | 56 | 143 |
| Black or African American; Some Other Race | | 81 | 62 | 49 | 27 | 110 | 329 |
| American Indian and Alaska Native; Asian | | 42 | 60 | 51 | 23 | 38 | 214 |
| American Indian and Alaska Native; Native Hawaiian and Other Pacific Islander | | 7 | 9 | 10 | 9 | 2 | 37 |
| American Indian and Alaska Native; Some Other Race | | 3 | 8 | 14 | 12 | 17 | 54 |
| Asian; Native Hawaiian and Other Pacific Islander | | 220 | 213 | 249 | 114 | 165 | 961 |
| Asian; Some Other Race | | 151 | 195 | 102 | 73 | 132 | 653 |
| Native Hawaiian and Other Pacific Islander; Some Other Race | | 36 | 14 | 7 | 4 | 10 | 71 |
| Population of three races: | | 443 | 332 | 484 | 209 | 489 | 1,937 |
| White; Black or African American; American Indian and Alaska Native | | 176 | 145 | 161 | 94 | 227 | 803 |
| White; Black or African American; Asian | | 44 | 28 | 48 | 7 | 41 | 168 |
| White; Black or African American; Native Hawaiian and Other Pacific Islander | | 6 | 3 | 9 | 1 | 12 | 31 |
| White; Black or African American; Some Other Race | | 12 | 5 | 13 | 7 | 15 | 52 |
| White; American Indian and Alaska Native; Asian | | 51 | 20 | 50 | 24 | 53 | 198 |
| White; American Indian and Alaska Native; Native Hawaiian and Other Pacific Islander | | 3 | 5 | 12 | 2 | 3 | 25 |
| White; American Indian and Alaska Native; Some Other Race | | 5 | 6 | 9 | 7 | 10 | 37 |
| White; Asian; Native Hawaiian and Other Pacific Islander | | 105 | 79 | 111 | 46 | 69 | 410 |
| White; Asian; Some Other Race | | 19 | 10 | 15 | 8 | 12 | 64 |
| White; Native Hawaiian and Other Pacific Islander; Some Other Race | | 0 | 0 | 5 | 1 | 1 | 7 |
| Black or African American; American Indian and Alaska Native; Asian | | 10 | 6 | 9 | 4 | 12 | 41 |
| Black or African American; American Indian and Alaska Native; Native Hawaiian and Other Pacific Islander | | 1 | 3 | 0 | 0 | 8 | 12 |
| Black or African American; American Indian and Alaska Native; Some Other Race | | 1 | 5 | 1 | 0 | 10 | 17 |
| Black or African American; Asian; Native Hawaiian and Other Pacific Islander | | 5 | 4 | 7 | 2 | 4 | 22 |
| Black or African American; Asian; Some Other Race | | 3 | 3 | 7 | 3 | 5 | 21 |
| Black or African American; Native Hawaiian and Other Pacific Islander; Some Other Race | | 0 | 2 | 0 | 0 | 2 | 4 |

Public Law File (PL94-171) Demographic Data Applied to Proposal C

Source: 2010 Census Redistricting Data (Public Law 94-171) Summary File

| | DISTRICT | 1 | 2 | 3 | 4 | 5 | |
|---|------------|------------|-----------------|------------|-------------|---------------|---------------|
| | SUPERVISOR | BOB BUSTER | JOHN TAVAGLIONE | JEFF STONE | JOHN BENOIT | MARION ASHLEY | COUNTY TOTALS |
| American Indian and Alaska Native; Asian; Native Hawaiian and Other Pacific Islander | | 1 | 5 | 3 | 1 | 0 | 10 |
| American Indian and Alaska Native; Asian; Some Other Race | | 0 | 1 | 1 | 0 | 2 | 4 |
| American Indian and Alaska Native; Native Hawaiian and Other Pacific Islander; Some Other Race | | 1 | 0 | 0 | 0 | 0 | 1 |
| Asian; Native Hawaiian and Other Pacific Islander; Some Other Race | | 0 | 2 | 3 | 2 | 3 | 10 |
| Population of four races: | | 38 | 29 | 37 | 17 | 41 | 162 |
| White; Black or African American; American Indian and Alaska Native; Asian | | 11 | 15 | 8 | 6 | 14 | 54 |
| White; Black or African American; American Indian and Alaska Native; Native Hawaiian and Other Pacific Islander | | 7 | 0 | 0 | 3 | 0 | 15 |
| White; Black or African American; American Indian and Alaska Native; Some Other Race | | 12 | 2 | 6 | 5 | 8 | 33 |
| White; Black or African American; Asian; Native Hawaiian and Other Pacific Islander | | 1 | 2 | 5 | 2 | 1 | 11 |
| White; Black or African American; Asian; Some Other Race | | 1 | 6 | 0 | 0 | 0 | 7 |
| White; Black or African American; Native Hawaiian and Other Pacific Islander; Some Other Race | | 0 | 0 | 0 | 0 | 1 | 1 |
| White; American Indian and Alaska Native; Asian; Native Hawaiian and Other Pacific Islander | | 5 | 3 | 11 | 3 | 7 | 29 |
| White; American Indian and Alaska Native; Asian; Some Other Race | | 0 | 0 | 0 | 0 | 0 | 0 |
| White; American Indian and Alaska Native; Native Hawaiian and Other Pacific Islander; Some Other Race | | 1 | 0 | 0 | 1 | 1 | 2 |
| White; Asian; Native Hawaiian and Other Pacific Islander; Some Other Race | | 1 | 0 | 4 | 0 | 1 | 6 |
| Black or African American; American Indian and Alaska Native; Asian; Native Hawaiian and Other Pacific Islander | | 0 | 0 | 0 | 0 | 2 | 2 |
| Black or African American; American Indian and Alaska Native; Asian; Some Other Race | | 0 | 0 | 0 | 0 | 1 | 1 |
| Black or African American; American Indian and Alaska Native; Native Hawaiian and Other Pacific Islander; Some Other Race | | 0 | 0 | 0 | 0 | 0 | 0 |
| Black or African American; Asian; Native Hawaiian and Other Pacific Islander; Some Other Race | | 0 | 1 | 0 | 0 | 0 | 1 |
| American Indian and Alaska Native; Asian; Native Hawaiian and Other Pacific Islander; Some Other Race | | 0 | 0 | 0 | 0 | 0 | 0 |
| Population of five races: | | 1 | 0 | 4 | 1 | 3 | 9 |
| White; Black or African American; American Indian and Alaska Native; Asian; Native Hawaiian and Other Pacific Islander | | 1 | 1 | 4 | 1 | 2 | 8 |
| White; Black or African American; American Indian and Alaska Native; Asian; Some Other Race | | 0 | 0 | 0 | 0 | 0 | 0 |
| White; Black or African American; American Indian and Alaska Native; Native Hawaiian and Other Pacific Islander; Some Other Race | | 0 | 0 | 0 | 0 | 0 | 0 |
| White; Black or African American; Asian; Native Hawaiian and Other Pacific Islander; Some Other Race | | 0 | 0 | 0 | 0 | 0 | 0 |
| Black or African American; American Indian and Alaska Native; Native Hawaiian and Other Pacific Islander; Some Other Race | | 0 | 0 | 0 | 0 | 1 | 1 |
| Black or African American; American Indian and Alaska Native; Asian; Native Hawaiian and Other Pacific Islander; Some Other Race | | 0 | 0 | 0 | 0 | 0 | 0 |
| Population of six races: | | 0 | 0 | 0 | 0 | 1 | 1 |
| White; Black or African American; American Indian and Alaska Native; Asian; Native Hawaiian and Other Pacific Islander; Some Other Race | | 0 | 0 | 0 | 0 | 1 | 1 |
| OCCUPANCY STATUS [3] | | | | | | | |
| Universe: Housing units | | | | | | | |
| Total: | | | | | | | |
| Occupied | | 140,526 | 127,257 | 164,151 | 223,661 | 145,112 | 800,707 |
| Vacant | | 129,978 | 120,010 | 144,530 | 159,666 | 132,076 | 686,260 |
| | | 10,548 | 7,247 | 19,621 | 63,995 | 13,036 | 114,447 |

Attachment 9

2011 Redistricting Proposals A, B and C

Proposal A (by District 1):

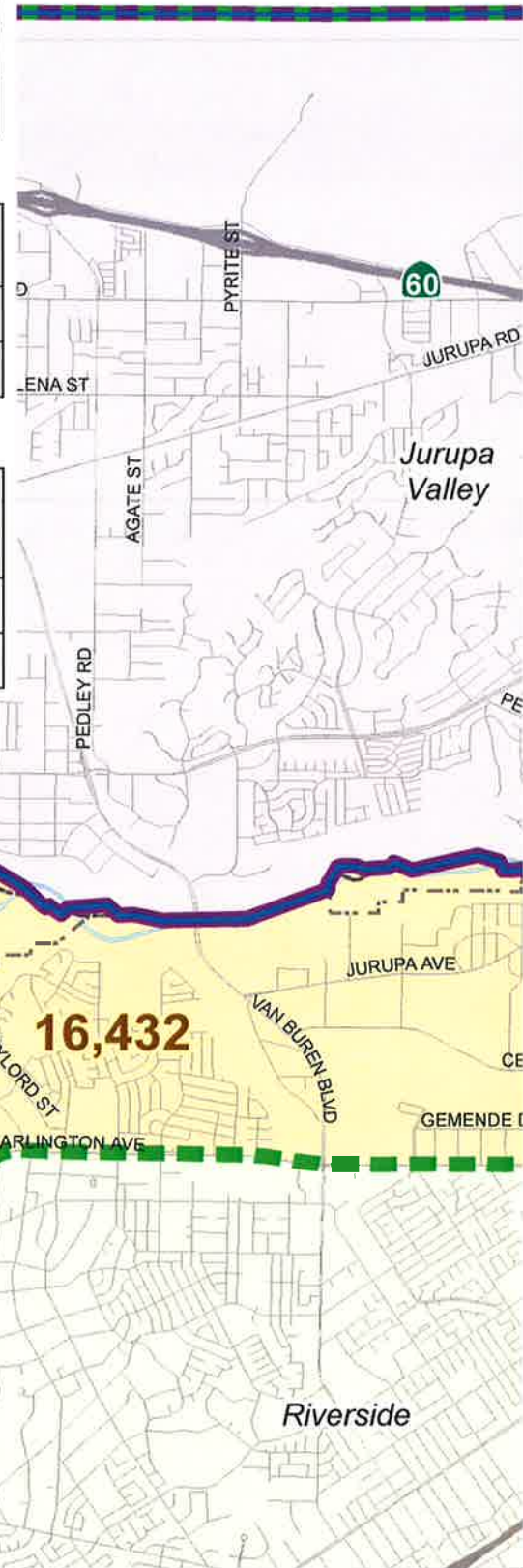
| District | Revised Population | Variance from Target | Change Needed to Reach Target |
|----------|--------------------|----------------------|-------------------------------|
| 1 | 432,722 | 1.2% | 5,206 |
| 2 | 429,721 | 1.9% | 8,207 |

Proposal B (by District 2):

| District | Revised Population | Variance from Target | Change Needed to Reach Target |
|----------|--------------------|----------------------|-------------------------------|
| 1 | 428,418 | 2.2% | 9,510 |
| 2 | 434,025 | 0.9% | 3,903 |

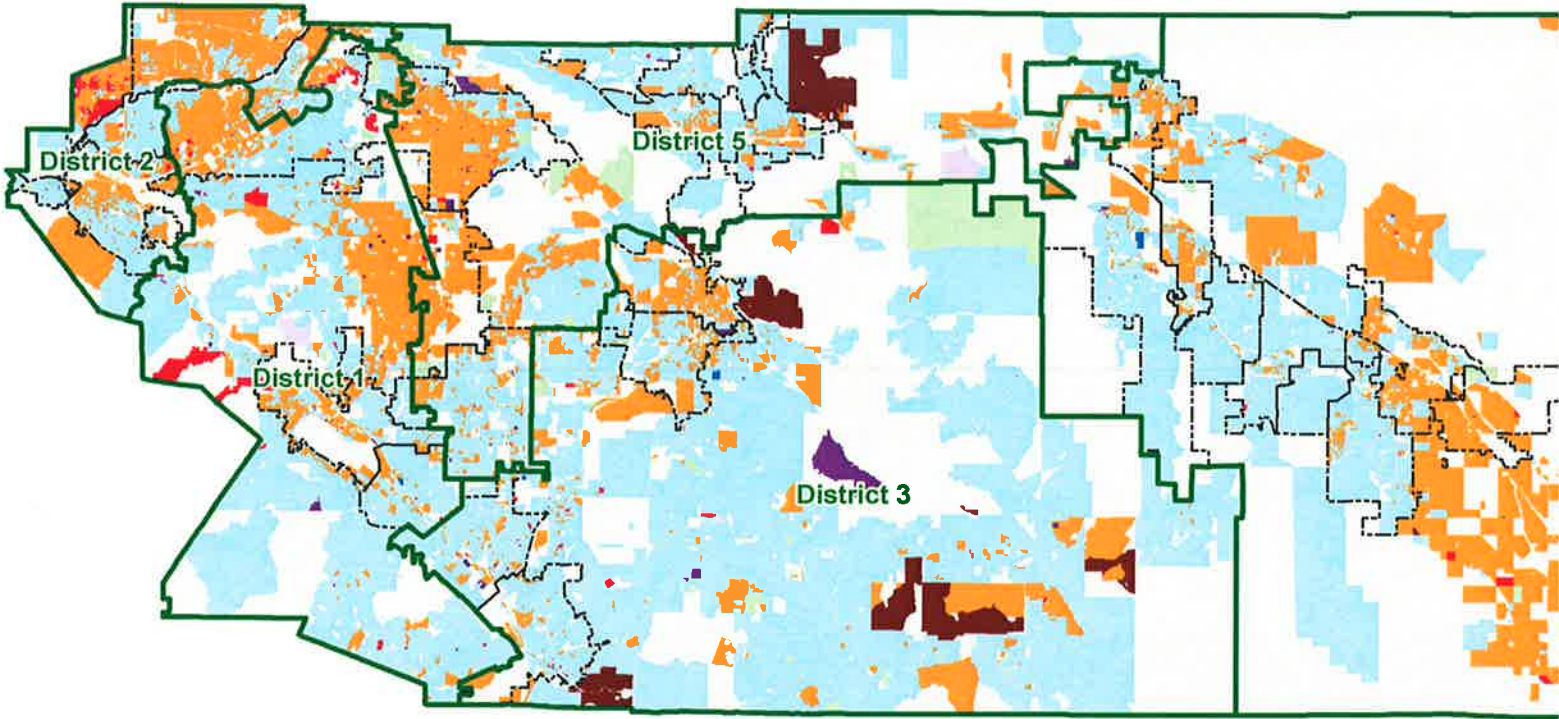
Proposal C (by District 2):

| District | Revised Population | Variance from Target | Change Needed to Reach Target |
|----------|--------------------|----------------------|-------------------------------|
| 1 | 439,914 | -0.5% | -1,986 |
| 2 | 422,529 | 3.5% | 15,399 |



Racial and Ethnic Majority Dis

Prop



| Racial and Ethnicity | Number of Census Blocks |
|---|-------------------------|
| Hispanic or Latino | 9,818 |
| White | 12,901 |
| Black or African American | 223 |
| Asian | 332 |
| American Indian and Alaska Native | 74 |
| Native Hawaiian and Other Pacific Islander | 11 |
| Some Other Race | 1 |
| Two or More Races | 66 |
| No Racial and Ethnic Majority | 488 |
| No population | |
| 2011 Supervisorial Redistricting Proposal C | |
| Cities | |

Racial and Ethnic Majority Dis

Proposals A, B and

Proposal A (by District 1):

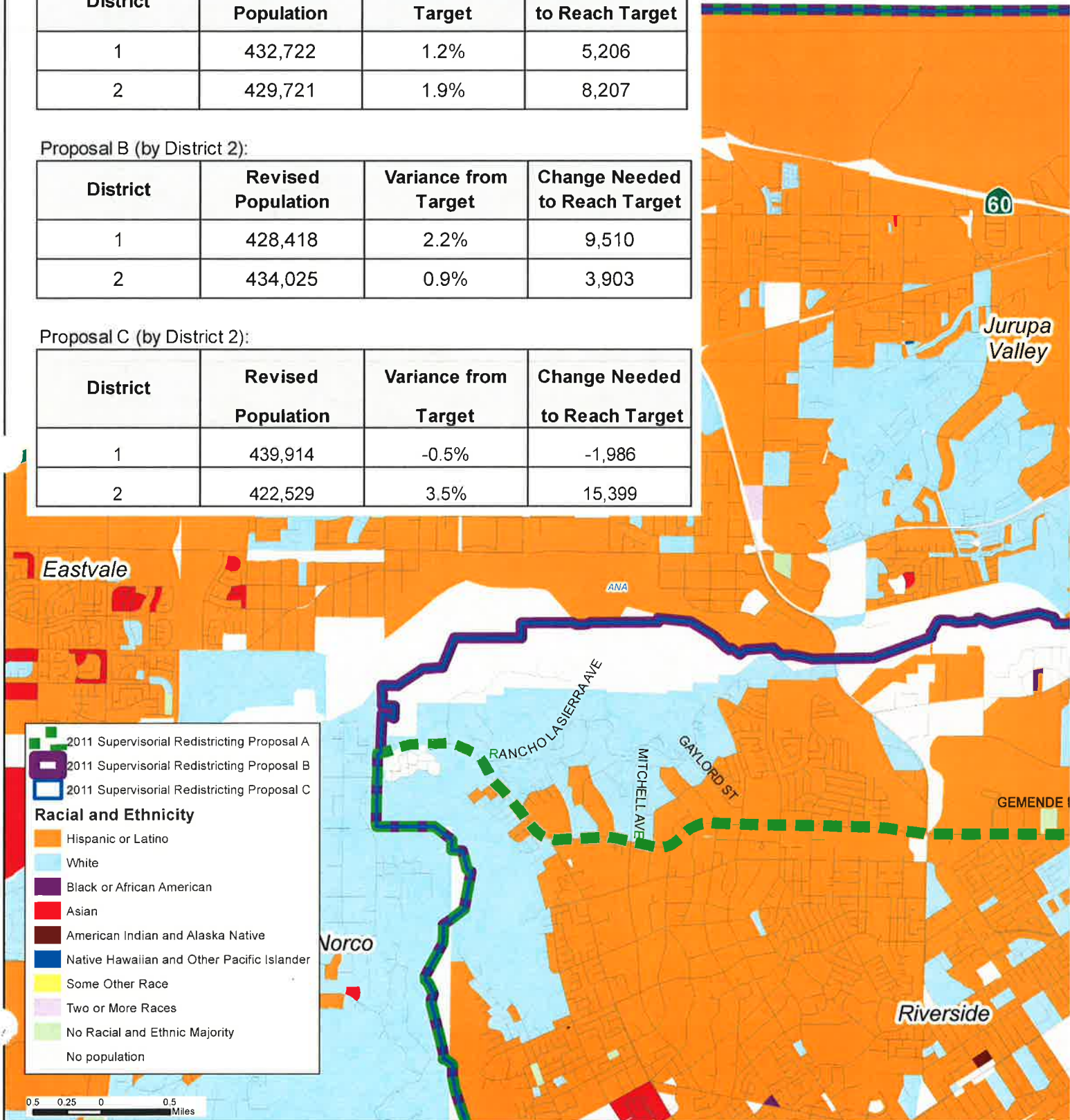
| District | Revised Population | Variance from Target | Change Needed to Reach Target |
|----------|--------------------|----------------------|-------------------------------|
| 1 | 432,722 | 1.2% | 5,206 |
| 2 | 429,721 | 1.9% | 8,207 |

Proposal B (by District 2):

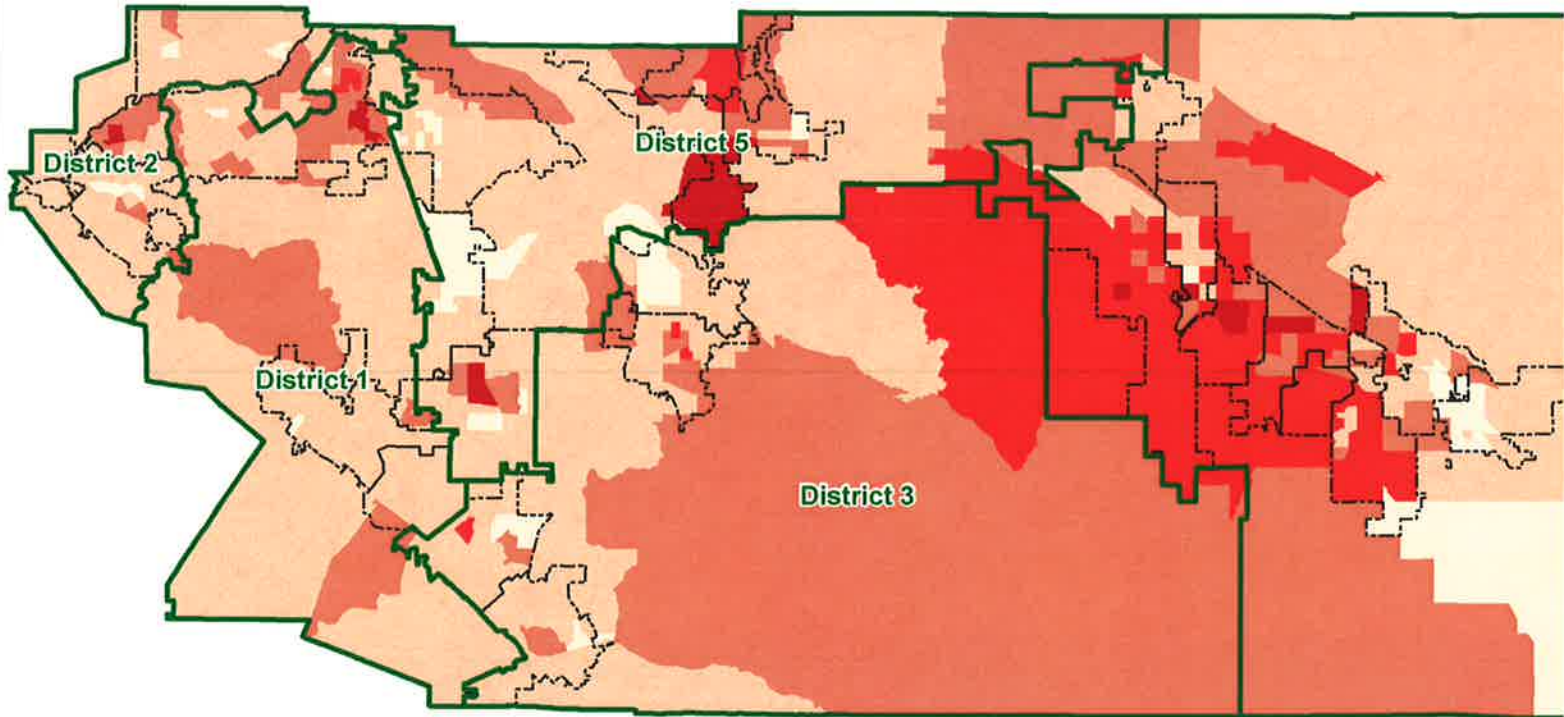
| District | Revised Population | Variance from Target | Change Needed to Reach Target |
|----------|--------------------|----------------------|-------------------------------|
| 1 | 428,418 | 2.2% | 9,510 |
| 2 | 434,025 | 0.9% | 3,903 |

Proposal C (by District 2):

| District | Revised Population | Variance from Target | Change Needed to Reach Target |
|----------|--------------------|----------------------|-------------------------------|
| 1 | 439,914 | -0.5% | -1,986 |
| 2 | 422,529 | 3.5% | 15,399 |



Percentage of Population Age 18 and Over



2010 Percent of Population Age 18 and Over

- 57% - 65%
- 66% - 75%
- 76% - 85%
- 86% - 95%
- 96% - 100%

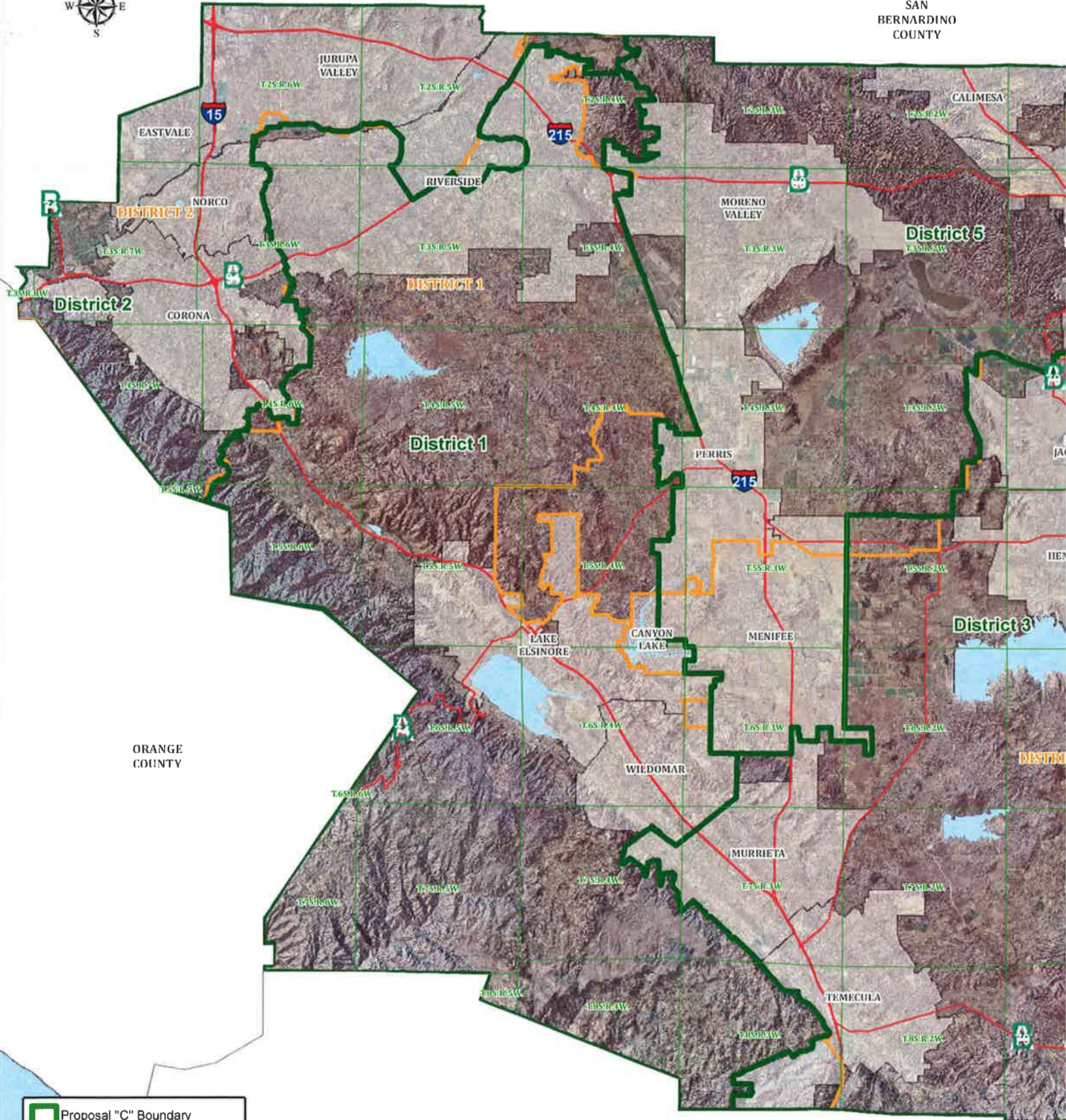
2011 Supervisorial Redistricting Proposal C

Cities

2011 RIVERSIDE COUNTY

PROP

SAN
BERNARDINO
COUNTY



ORANGE
COUNTY

District 3

DISTRICT

SAN DIEGO
COUNTY

- Proposal "C" Boundary
- Current Supervisorial District
- Township
- Highway
- City Boundaries

MINUTES OF THE BOARD OF SUPERVISORS
COUNTY OF RIVERSIDE, STATE OF CALIFORNIA



9.1

9:30 a.m. being the time set for public hearing on the recommendation from Executive Office regarding the Supervisorial Districting Plan, the chairman called the matter for hearing.

Jay Orr, Assistant Executive Officer, Executive Office, presented the matter.

On motion of Supervisor Ashley, seconded by Supervisor Tavaglione and duly carried by unanimous vote, IT WAS ORDERED that the above matter is continued to include Proposal C to Tuesday, July 26, 2011 at 9:30 a.m and August 16, 2011.

I hereby certify that the foregoing is a full true, and correct copy of an order made and entered on July 12, 2011 of Supervisors Minutes.

(seal) WITNESS my hand and the seal of the Board of Supervisors
Dated: July 12, 2011
Kecia Harper-Ihem, Clerk of the Board of Supervisors, in
and for the County of Riverside, State of California.

By: *Kecia Harper-Ihem* Deputy

AGENDA NO.
9.1

xc: EO, COB



OFFICE OF
CLERK OF THE BOARD OF SUPERVISORS
1st FLOOR, COUNTY ADMINISTRATIVE CENTER
P.O. BOX 1147, 4080 LEMON STREET
RIVERSIDE, CA 92502-1147
PHONE: (951) 955-1060
FAX: (951) 955-1071

KECIA HARPER-IHEM
Clerk of the Board of Supervisors

KIMBERLY A. RECTOR
Assistant Clerk of the Board

July 13, 2011

THE PRESS ENTERPRISE
ATTN: LEGALS
P.O. BOX 792
RIVERSIDE, CA 92501

FAX: (951) 368-9018
E-MAIL: legals@pe.com

RE: NOTICE OF PUBLIC HEARING: SUPERVISORIAL REDISTRICTING PLAN

To Whom It May Concern:

Attached is a copy for publication in your newspaper for **ONE (1) TIME on Saturday, July 16, 2011.**

We require your affidavit of publication immediately upon completion of the last publication.

Your invoice must be submitted to this office in duplicate, WITH TWO CLIPPINGS OF THE PUBLICATION.

NOTE: PLEASE COMPOSE THIS PUBLICATION INTO A SINGLE COLUMN FORMAT.

Thank you in advance for your assistance and expertise.

Sincerely,

McGil

Cecilia Gil, Board Assistant to
KECIA HARPER-IHEM, CLERK OF THE BOARD

9.1 - 7/12/11

Gil, Cecilia

From: PE Legals <legals@pe.com>
Sent: Wednesday, July 13, 2011 8:35 AM
To: Gil, Cecilia
Subject: RE: FOR PUBLICATION: Redistricting Plan - Proposal C

Received for publication on July 16

Thank You!

enterprisemedia

Publisher of the Press-Enterprise

Maria G. Tinajero · Legal Advertising Department

1-800-880-0345 · Fax: 951-368-9018 · email: legals@pe.com

Please Note: Deadline is 10:30 AM two (2) business days prior to the date you would like to publish.
Additional days required for larger ad sizes

From: Gil, Cecilia [<mailto:CCGIL@rcbos.org>]
Sent: Wednesday, July 13, 2011 8:23 AM
To: PE Legals
Subject: FOR PUBLICATION: Redistricting Plan - Proposal C

This is the one with the map...Notice of Public Hearing, for publication on Saturday, July 16, 2011. Please confirm. THANK YOU!

Cecilia Gil

Board Assistant to the
Clerk of the Board of Supervisors
951-955-8464

THE COUNTY ADMINISTRATIVE CENTER IS CLOSED EVERY FRIDAY UNTIL FURTHER NOTICE.
PLEASE CONSIDER THE ENVIRONMENT BEFORE PRINTING.



OFFICE OF
CLERK OF THE BOARD OF SUPERVISORS
1st FLOOR, COUNTY ADMINISTRATIVE CENTER
P.O. BOX 1147, 4080 LEMON STREET
RIVERSIDE, CA 92502-1147
PHONE: (951) 955-1060
FAX: (951) 955-1071

KECIA HARPER-IHEM
Clerk of the Board of Supervisors

KIMBERLY A. RECTOR
Assistant Clerk of the Board

July 13, 2011

THE DESERT SUN
ATTN: LEGALS
P.O. BOX 2734
PALM SPRINGS, CA 92263

FAX: (760) 778-4731
E-MAIL: legals@thedesertsun.com

RE: NOTICE OF PUBLIC HEARING: SUPERVISORIAL REDISTRICTING PLAN

To Whom It May Concern:

Attached is a copy for publication in your newspaper for **ONE (1) TIME on Saturday, July 16, 2011.**

We require your affidavit of publication immediately upon completion of the last publication.

Your invoice must be submitted to this office in duplicate, WITH TWO CLIPPINGS OF THE PUBLICATION.

NOTE: PLEASE COMPOSE THIS PUBLICATION INTO A SINGLE COLUMN FORMAT.

Thank you in advance for your assistance and expertise.

Sincerely,

Mcgil

Cecilia Gil, Board Assistant to
KECIA HARPER-IHEM, CLERK OF THE BOARD

Gil, Cecilia

From: Moeller, Charlene <CMOELLER@palmspri.gannett.com>
Sent: Wednesday, July 13, 2011 8:59 AM
To: Gil, Cecilia
Subject: RE: FOR PUBLICATION: Redistricting Plan - Proposal C

Ad received and will publish on date(s) requested.

Charlene Moeller | Media Sales Legal Notice Coordinator
The Desert Sun Media Group
750 N. Gene Autry Trail, Palm Springs, CA 92262
t 760.778.4578 | f 760.778.4731
legals@thedesertsun.com | dpwlegals@thedesertsun.com
The Coachella Valley's #1 Source in News & Advertising!
www.mydesert.com | [twitter @MyDesert](https://twitter.com/MyDesert) | [facebook MyDesert.com](https://facebook.com/MyDesert.com)

From: Gil, Cecilia [<mailto:CCGIL@rcbos.org>]
Sent: Wednesday, July 13, 2011 8:24 AM
To: tds-legals
Subject: FOR PUBLICATION: Redistricting Plan - Proposal C

This is the one with the map....Notice of Public Hearing, for publication on Saturday, July 16, 2011. Please confirm. THANK YOU!

Cecilia Gil
Board Assistant to the
Clerk of the Board of Supervisors
951-955-8464

THE COUNTY ADMINISTRATIVE CENTER IS CLOSED EVERY FRIDAY UNTIL FURTHER NOTICE.
PLEASE CONSIDER THE ENVIRONMENT BEFORE PRINTING.



OFFICE OF
CLERK OF THE BOARD OF SUPERVISORS
1st FLOOR, COUNTY ADMINISTRATIVE CENTER
P.O. BOX 1147, 4080 LEMON STREET
RIVERSIDE, CA 92502-1147
PHONE: (951) 955-1060
FAX: (951) 955-1071

KECIA HARPER-IHEM
Clerk of the Board of Supervisors

KIMBERLY A. RECTOR
Assistant Clerk of the Board

July 13, 2011

PALO VERDE VALLEY TIMES
ATTN: LEGALS
P.O. BOX 1159
BLYTHE, CA 92226

TEL: (760) 922-3181
E-MAIL: classifieds@paloverdevalleytimes.com

RE: NOTICE OF PUBLIC HEARING: SUPERVISORIAL REDISTRICTING PLAN

To Whom It May Concern:

Attached is a copy for publication in your newspaper for **ONE (1) TIME on Friday, July 15, 2011.**

We require your affidavit of publication immediately upon completion of the last publication.

Your invoice must be submitted to this office in duplicate, WITH TWO CLIPPINGS OF THE PUBLICATION.

NOTE: PLEASE COMPOSE THIS PUBLICATION INTO A SINGLE COLUMN FORMAT.

Thank you in advance for your assistance and expertise.

Sincerely,

Mcgil

Cecilia Gil, Board Assistant to
KECIA HARPER-IHEM, CLERK OF THE BOARD

Gil, Cecilia

From: PVVT Classifieds <classifieds@pvvt.com>
Sent: Wednesday, July 13, 2011 11:54 AM
To: Gil, Cecilia
Subject: RE: FOR PUBLICATION: Redistricting Plan Proposal C

Hi confirming receipt and will send proof later. Thank You.

Lori M. Nelson
Classifieds / Legals Clerk
760-922-3181 x101
Fax: 760-922-3184
153 S. Broadway, Blythe, CA 92225
classifieds@paloverdevalleytimes.com
Mailing Address: P.O. Box 1159, Blythe, CA 92226

From: Gil, Cecilia [<mailto:CCGIL@rcbos.org>]
Sent: Wednesday, July 13, 2011 8:31 AM
To: PVVT Classifieds
Subject: FOR PUBLICATION: Redistricting Plan Proposal C

Good Morning! Notice of Public Hearing, for publication on Friday, July 15, 2011. Please confirm.
THANK YOU!

Cecilia Gil
Board Assistant to the
Clerk of the Board of Supervisors
951-955-8464

THE COUNTY ADMINISTRATIVE CENTER IS CLOSED EVERY FRIDAY UNTIL FURTHER NOTICE.
PLEASE CONSIDER THE ENVIRONMENT BEFORE PRINTING.

Important: This e-mail and any attachments are intended only for the use of the individual or entity to which it is addressed. It may contain confidential and privileged information for the use of the designated recipients named above. If the reader of this transmission is not the intended recipient or the employee or agent responsible for delivering the transmission to the intended recipient, you are hereby notified that any dissemination, distribution, copying, printing or use of this transmission or its contents is strictly prohibited. If you have received this transmission in error, please notify me by telephone at the number listed above, and delete the entire transmission from your "inbox" and also from your "trash", "deleted items", other equivalent email "folder" locations and computer hard drive.

NOTICE OF PUBLIC HEARING BEFORE THE BOARD OF SUPERVISORS OF RIVERSIDE COUNTY

NOTICE IS HEREBY GIVEN that a public hearing at which all interested persons will be heard, will be held before the Board of Supervisors of Riverside County, California, on the 1st Floor Board Chambers, County Administrative Center, 4080 Lemon Street, Riverside, on **Tuesday, July 26, 2011, at 9:30 a.m.** to consider the following Supervisorial Redistricting Plan:

(INSERT PROPOSAL C MAP)

Any person wishing to testify in support of or in opposition may do so in writing between the date of this notice and the public hearing, or may appear and be heard at the time and place noted above. All written comments received prior to the public hearing will be submitted to the Board of Supervisors and the Board of Supervisors will consider such comments, in addition to any oral testimony, before making a decision on the proposed plan.

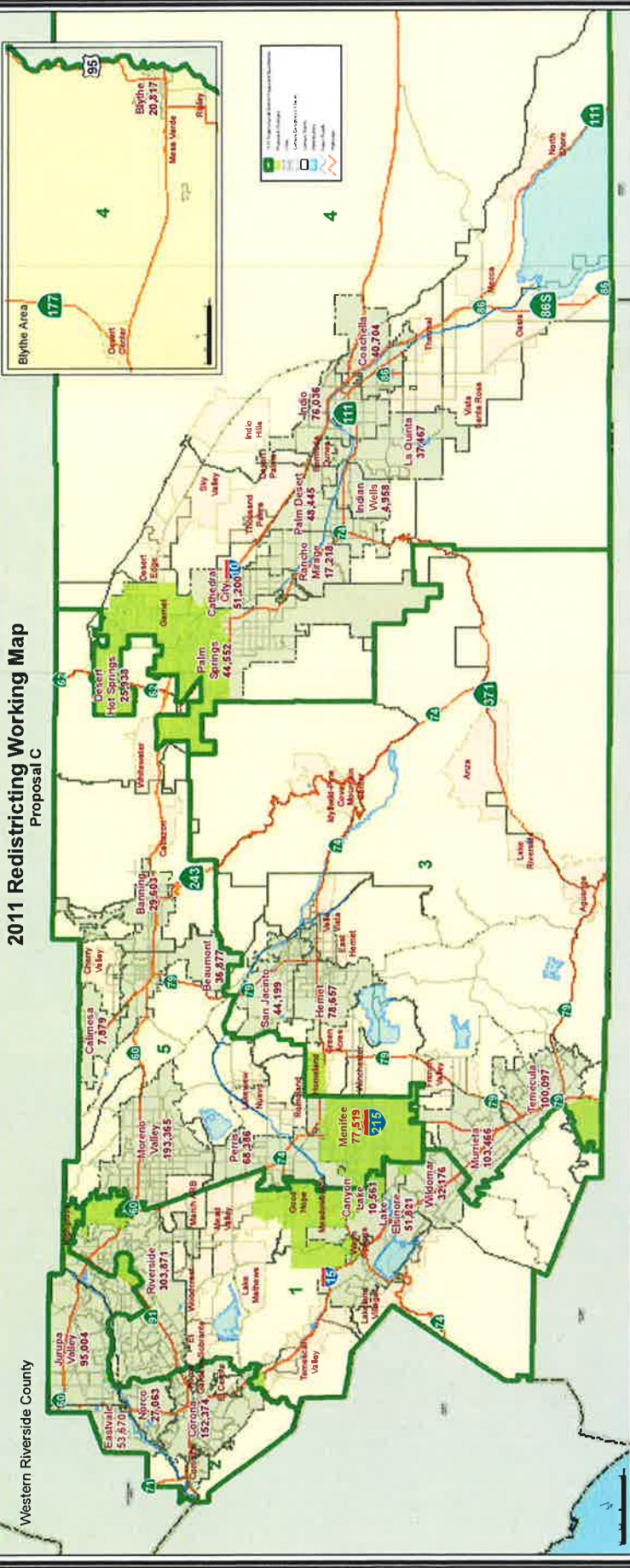
Please send all written correspondence to: Clerk of the Board
4080 Lemon Street, 1st Floor
Post Office Box 1147
Riverside, CA 92502-1147

Dated: July 13, 2011

Kecia Harper-Ihem
Clerk of the Board
By: Cecilia Gil, Board Assistant

2011 Redistricting Working Map

Proposal C



Western Riverside County

Escondido Supervisorial District Boundaries

| District | Population | % of Total | % of District |
|--------------------|------------------|-------------|---------------|
| 1 | 423,327 | 18.7% | 13.0% |
| 2 | 417,888 | 18.5% | 12.9% |
| 3 | 398,876 | 17.8% | 12.3% |
| 4 | 445,811 | 19.9% | 13.3% |
| 5 | 417,521 | 18.6% | 12.6% |
| Grand Total | 2,263,363 | 100% | 100% |

Escondido Supervisorial District Boundaries

| District | Population | % of Total | % of District |
|--------------------|------------------|-------------|---------------|
| 1 | 423,327 | 18.7% | 13.0% |
| 2 | 417,888 | 18.5% | 12.9% |
| 3 | 398,876 | 17.8% | 12.3% |
| 4 | 445,811 | 19.9% | 13.3% |
| 5 | 417,521 | 18.6% | 12.6% |
| Grand Total | 2,263,363 | 100% | 100% |

Proposed Boundary Population

| District | Population | % of Total | % of District |
|--------------------|------------------|-------------|---------------|
| 1 | 423,327 | 18.7% | 13.0% |
| 2 | 417,888 | 18.5% | 12.9% |
| 3 | 398,876 | 17.8% | 12.3% |
| 4 | 445,811 | 19.9% | 13.3% |
| 5 | 417,521 | 18.6% | 12.6% |
| Grand Total | 2,263,363 | 100% | 100% |

The Desert Sun

mydesert.com

750 N. Gene Autry Trail
 Palm Springs, CA 92262
 Billing Inquiries: (866) 875-0854
 Main Office: (760) 322-8889

ADVERTISING INVOICE/STATEMENT

Make Checks payable to DESERT SUN PUBLISHING CO.
 P.O. Box 677368 Dallas, TX 75267-7368
 A finance charge of 1.5% per month(18% Annually) will be added to balances not paid by the 20th.

RIV06900000000000000000000040993640063398810829

89

RIVERSIDE COUNTY-BOARD OF SUP.
 PO BOX 1147
 RIVERSIDE CA 92502-1147

| | |
|--------------------|-------------------|
| Customer No. | Invoice No. |
| RIV069 | 0004099364 |
| For the Period | Thru |
| 06/27/11 | 07/31/11 |
| Due Date | Amount Due |
| 08/15/11 | 6,339.88 |
| AMOUNT PAID | |

PLEASE RETURN THIS TOP SECTION WITH PAYMENT IN THE ENCLOSED ENVELOPE AND INCLUDE YOUR CUSTOMER NUMBER ON REMITTANCE.

| Date | EDT | Class | Description | Times Run | Col | Depth | Total Size | Rate | Amount |
|---------------|----------------|-----------------|--------------------------|--------------|--------------------|------------------|------------|------|------------------|
| 0627 | | | BALANCE FORWARD | | | | | | 7,014.48 |
| 0705 | | | PAYMENT - THANK YOU | | | | | | 3,915.00- |
| 0623 | CLS | 0001 | CECILIA NO 2138 NOTICE T | 2 | 2 | 59.00 | 236.00 | | 205.88 |
| 0701 | CLS | 0001 | CECILIA NO 2243 NOTICE O | 2 | 2 | 694.00 | 2776.00 | | 1,168.04 |
| 0706 | CLS | 0001 | CECILIA NO 2284 NOTICE O | 4 | 2 | 77.00 | 616.00 | | 271.64 |
| 0715 | CLS | 0001 | CECILIA NO 2409 NOTICE O | 2 | 2 | 129.00 | 516.00 | | 230.14 |
| 0716 | CLS | 0001 | CECILIA NO 2430 NOTICE O | 2 | 2 | 62.00 | 248.00 | | 118.92 |
| 0720 | CLS | 0001 | CECILIA NO 2462 BOARD OF | 2 | 2 | 83.00 | 332.00 | | 153.78 |
| 0724 | CLS | 0001 | CECILIA NO 2522 NOTICE O | 2 | 2 | 104.00 | 416.00 | | 188.64 |
| 0724 | CLS | 0001 | CECILIA NO 2523 BOARD OF | 2 | 2 | 124.00 | 496.00 | | 221.84 |
| 0727 | CLS | 0001 | CECILIA NO 2532 NOTICE O | 2 | 2 | 102.00 | 408.00 | | 185.32 |
| 0727 | CLS | 0001 | CECILIA NO 2533 NOTICE O | 2 | 2 | 95.00 | 380.00 | | 173.70 |
| 0731 | CLS | 0001 | CECILIA NO 2603 NOTICE O | 2 | 2 | 60.00 | 240.00 | | 115.60 |
| 0731 | CLS | 0001 | CECILIA NO 2604 NOTICE O | 2 | 2 | 115.00 | 460.00 | | 206.00 |
| | | | | | | | | | 9.32 of 07/26/11 |
| Current | | Over 30 Days | Over 60 Days | Over 90 Days | Over 120 Days | Total Due | | | |
| 3,240.40 | | 3,099.48 | .00 | .00 | .00 | 6,339.88 | | | |
| Contract Type | Contract Qnty. | Expiration Date | Current Usage | Total Used | Quantity Remaining | Salesperson | | | |
| | | | | | | MOELLER | | | |

RECEIVED RIVERSIDE COUNTY
 CLERK / BOARD OF SUPERVISORS
 2011 AUG - 8 PM 1:00

The Advertiser shall make payment within 15 days of the billing date indicated on Company's statement, and, in the event that it fails to make payment within such time, Company may reject advertising copy and / or immediately cancel this contract and Advertiser agrees to indemnify Company for all expenses incurred in connection with the collection of amounts payable under this contract, including but not limited to collection fees, attorney's fees and court costs. If this agreement is cancelled due to Advertiser's failure to make timely payment, Company may rebill the Advertiser for the outstanding balance due at the open or earned contract rate, whichever is applicable.

TO ENSURE PROPER CREDIT, PLEASE RETURN THE TOP SECTION AND INCLUDE YOUR CUSTOMER NUMBER ON REMITTANCE.

| Customer Number | Name | Invoice Number | Amount Paid |
|-----------------|--------------------------------|----------------|-------------|
| RIV069 | RIVERSIDE COUNTY-BOARD OF SUP. | | |

The Desert Sun
750 N Gene Autry Trail
Palm Springs, CA 92262
760-778-4578 / Fax 760-778-4731

Certificate of Publication

**State Of California ss:
County of Riverside**

Advertiser:

RIVERSIDE COUNTY-BOARD OF SUP.
4080 LEMON ST
RIVERSIDE CA 925013

2000271110

I am over the age of 18 years old, a citizen of the United States and not a party to, or have interest in this matter. I hereby certify that the attached advertisement appeared in said newspaper (set in type not smaller than non pariel) in each and entire issue of said newspaper and not in any supplement thereof on the following dates, to wit:

Newspaper: The Desert Sun

7/16/2011

I acknowledge that I am a principal clerk of the printer of The Desert Sun, printed and published weekly in the City of Palm Springs, County of Riverside, State of California. The Desert Sun was adjudicated a newspaper of general circulation on March 24, 1988 by the Superior Court of the County of Riverside, State of California Case No. 191236.

I declare under penalty of perjury that the foregoing is true and correct. Executed on this 16th day of July, 2011 in Palm Springs, California.

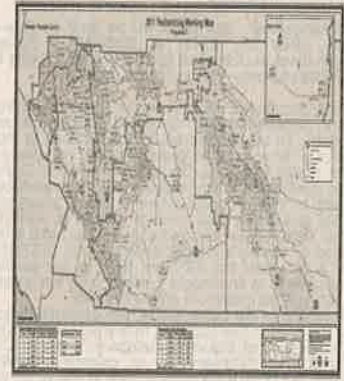


Declarant's Signature

Stamp: JUL 16 2011 11:10 AM
Stamp: JUL 16 2011 11:10 AM

No 2430
**NOTICE OF PUBLIC HEARING BEFORE
THE BOARD OF SUPERVISORS OF RIV-
ERSIDE COUNTY**

NOTICE IS HEREBY GIVEN that a public hearing at which all interested persons will be heard, will be held before the Board of Supervisors of Riverside County, California, on the 1st Floor Board Chambers, County Administrative Center, 4080 Lemon Street, Riverside, on Tuesday, July 26, 2011, at 9:30 a.m. to consider the following Supervisorial Redistricting Plan.



Any person wishing to testify in support of or in opposition may do so in writing between the date of this notice and the public hearing, or may appear and be heard at the time and place noted above. All written comments received prior to the public hearing will be submitted to the Board of Supervisors and the Board of Supervisors will consider such comments, in addition to any oral testimony, before making a decision on the proposed plan.

Please send all written correspondence to:
Clerk of the Board
4080 Lemon Street, 1st Floor
Post Office Box 1147
Riverside, CA 92502-1147

Dated: July 13, 2011
Kecia Harper-Ihem
Clerk of the Board
By: Cecilia Gil, Board Assistant

Published: 7/16/11

Palo Verde Valley Times

www.paloverdevalleytimes.com
(760) 922-3181 x-6204

| | | | |
|------------------------|--------------------|-----------------------------|---------|
| BILLING PERIOD | | ADVERTISER/CLIENT NAME | |
| 11/01/11 - 11/30/11 | | Riv Co Board of Supervisors | |
| TOTAL AMOUNT DUE | * UNAPPLIED AMOUNT | TERMS OF PAYMENT | |
| 310.86 | | NET 10 DAYS | |
| CURRENT NET AMOUNT DUE | 30 DAYS | 60 DAYS | 90 DAYS |
| 310.86 | .00 | .00 | .00 |

INVOICE AND STATEMENT

| PAGE # | BILLING DATE | BILLED ACCOUNT NAME AND ADDRESS | REMITTANCE ADDRESS |
|-----------------------|--------------|--|---|
| 1 | 11/30/11 | Clerk, Board of Supervisors Co Admin Cntr PO BOX 1147 RIVERSIDE CA 92502-1147 | PALO VERDE VALLEY TIMES, INC. QUARTZSITE TIMES 153 S. BROADWAY P.O. BOX 1159 BLYTHE, CA 92225 |
| BILLED ACCOUNT NUMBER | | | |
| 34758 | | | |
| ADV/CLIENT NUMBER | | | |
| | | | |

PLEASE DETACH AND RETURN UPPER PORTION WITH YOUR REMITTANCE

| DATE | NEWSPAPER REFERENCE | DESCRIPTION-OTHER COMMENTS/CHARGES | SAU SIZE BILLED UNITS | TIMES RUN RATE | GROSS/NET AMOUNT |
|-------|---------------------|------------------------------------|-----------------------|----------------|------------------|
| 10/31 | | BALANCE FORWARD | | | 0.00 |
| 11/30 | 37395 | ADJ BILLING ERROR TO ACCT# 10305 | | | 310.86 |

RECEIVED RIVERSIDE COUNTY
CLERK / BOARD OF SUPERVISORS
2011 DEC 12 PM 1:37

E.O.
9.32 of 07/26/11

STATEMENT OF ACCOUNT AGING OF PAST DUE AMOUNTS * UNAPPLIED AMOUNTS ARE INCLUDED IN TOTAL AMOUNT DUE

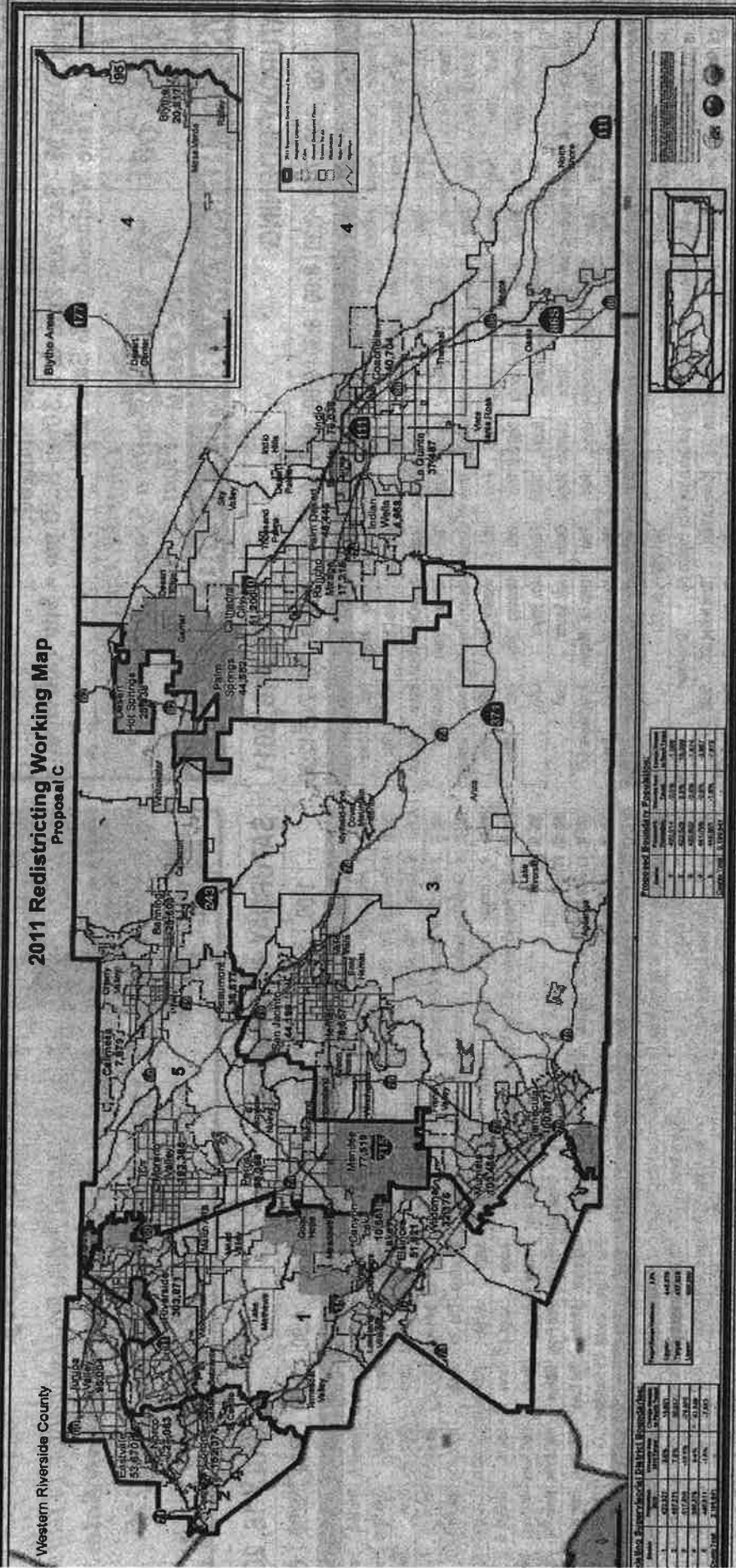
| CURRENT NET AMOUNT DUE | 30 DAYS | 60 DAYS | OVER 90 DAYS | *UNAPPLIED AMT | TOTAL AMOUNT DUE |
|------------------------|---------|---------|--------------|----------------|------------------|
| 310.86 | .00 | .00 | .00 | | 310.86 |

PALO VERDE VALLEY TIMES - QUARTZSITE TIMES

| STATEMENT# | ADVERTISER INFORMATION | | | |
|------------|------------------------|----------------|-------------|-----------------------------|
| | BILLING PERIOD | ACCOUNT NUMBER | ADV/CLIENT# | ADVERTISER/CLIENT NAME |
| 34758 | 11/01/11 - 11/30/11 | 34758 | | Riv Co Board of Supervisors |

NOTICE OF PUBLIC HEARING BEFORE THE BOARD OF SUPERVISORS OF RIVERSIDE COUNTY

NOTICE IS HEREBY GIVEN that a public hearing at which all interested persons will be heard, will be held before the Board of Supervisors of Riverside County, California, on the 1st Floor Board Chambers, County Administrative Center, 4080 Lemon Street, Riverside, on **Tuesday, July 26, 2011, at 9:30** to consider the following Supervisorial Redistricting Plan:



person wishing to testify in support of or in opposition may do so in writing between the date of this notice and the public hearing, or may appear be heard at the time and place noted above. All written comments received prior to the public hearing will be submitted to the Board of Supervisors the Board of Supervisors will consider such comments, in addition to any oral testimony, before making a decision on the proposed plan.

se send all written correspondence to: Clerk of the Board
 4080 Lemon Street, 1st Floor
 Post Office Box 1147
 Riverside, CA 92502-1147

Kecia Harper-Ithem
 Clerk of the Board
 By: Cecilia Gil, Board Assistant

ed: July 13, 2011

: July 15, 2011

Riverside County Board of Supervisors
Request to Speak

Submit request to Clerk of Board (right of podium),
Speakers are entitled to three (3) minutes, subject
Board Rules listed on the reverse side of this form.

SPEAKER'S NAME: Norris Mendoza

Address: 7485 South Lake View
(only if follow-up mail response requested)

City: Esde zip: 92584

Phone #: 354-8375

Date: Nov 28 Agenda # 9.1

PLEASE STATE YOUR POSITION BELOW:

Position on "Regular" (non-appealed) Agenda Item:

Support Oppose Neutral
Arbava, Casa Blanca, Exercise be together

Note: If you are here for an agenda item that is filed
for "Appeal", please state separately your position on
the appeal below:

Support Oppose Neutral

I give my 3 minutes to: _____

Riverside County Board of Supervisors
Request to Speak

Submit request to Clerk of Board (right of podium),
Speakers are entitled to three (3) minutes, subject
Board Rules listed on the reverse side of this form.

SPEAKER'S NAME: Paul Chavez

Address: 7306 General Milligan St
(only if follow-up mail response requested)

City: Riverside zip: 92504

Phone #: 951-682-3727

Date: 06-28-2011 Agenda # 9.1

PLEASE STATE YOUR POSITION BELOW:

Position on "Regular" (non-appealed) Agenda Item:

Support Oppose Neutral

Note: If you are here for an agenda item that is filed
for "Appeal", please state separately your position on
the appeal below:

Support Oppose Neutral

I give my 3 minutes to: _____

Riverside County Board of Supervisors
Request to Speak

Submit request to Clerk of Board (right of podium),
Speakers are entitled to three (3) minutes, subject
Board Rules listed on the reverse side of this form.

SPEAKER'S NAME: Yvonne Hernandez

Address: 7485 Santa Rosa
(only if follow-up mail response requested)

City: Esde Zip: 92504

Phone #: 951-237-5475 Redrick

Date: July 12-2011 Agenda # 9.1

PLEASE STATE YOUR POSITION BELOW:

Position on "Regular" (non-appealed) Agenda Item:

Support Oppose Neutral

Note: If you are here for an agenda item that is filed
for "Appeal", please state separately your position on
the appeal below:

Support Oppose Neutral

I give my 3 minutes to: _____

Riverside County Board of Supervisors
Request to Speak

Submit request to Clerk of Board (right of podium),
Speakers are entitled to three (3) minutes, subject
Board Rules listed on the reverse side of this form.

SPEAKER'S NAME: Christina Duran

Address: 3912 Ottawa Ave.
(only if follow-up mail response requested)

City: Riv. Zip: 92507

Phone #: (951) 312-9890

Date: 6/28/11 Agenda # 9.1

PLEASE STATE YOUR POSITION BELOW:

Position on "Regular" (non-appealed) Agenda Item:

Support Oppose Neutral

Note: If you are here for an agenda item that is filed
for "Appeal", please state separately your position on
the appeal below:

Support Oppose Neutral

I give my 3 minutes to: _____

Riverside County Board of Supervisors
Request to Speak

Submit request to Clerk of Board (right of podium),
Speakers are entitled to three (3) minutes, subject
Board Rules listed on the reverse side of this form.

SPEAKER'S NAME: Netta Jones
Delta Sigma Theta Sorority

Address: _____
(only if follow-up mail response requested)

City: _____ Zip: _____

Phone #: (909) 243-5991

Date: 07/12/11 Agenda # 9, 1

PLEASE STATE YOUR POSITION BELOW:

Position on "Regular" (non-appealed) Agenda Item:

Support Oppose Neutral

Note: If you are here for an agenda item that is filed
for "Appeal", please state separately your position on
the appeal below:

Support Oppose Neutral

I give my 3 minutes to: _____

Riverside County Board of Supervisors
Request to Speak

Submit request to Clerk of Board (right of podium),
Speakers are entitled to three (3) minutes, subject
Board Rules listed on the reverse side of this form.

SPEAKER'S NAME: Junielle Gonzalez
Legislative Caucus, NATACD

Address: _____
(only if follow-up mail response requested)

City: Riverside Zip: 92506

Phone #: 951 780-7627

Date: _____ Agenda # 9, 1

PLEASE STATE YOUR POSITION BELOW:

Position on "Regular" (non-appealed) Agenda Item:

Support Oppose Neutral

Note: If you are here for an agenda item that is filed
for "Appeal", please state separately your position on
the appeal below:

Support Oppose Neutral

I give my 3 minutes to: _____

Riverside County Board of Supervisors
Request to Speak

Submit request to Clerk of Board (right of podium),
Speakers are entitled to three (3) minutes, subject
Board Rules listed on the reverse side of this form.

SPEAKER'S NAME: Victoria Madaza

Address: 7485 South Rose Way
(only if follow-up mail response requested)

City: Riverside Zip: 92504

Phone #: 951-237-3479

Date: 7-12-11 Agenda # 9.1

PLEASE STATE YOUR POSITION BELOW:

Position on "Regular" (non-appealed) Agenda Item:

Support Oppose Neutral

Note: If you are here for an agenda item that is filed
for "Appeal", please state separately your position on
the appeal below:

Support Oppose Neutral

I give my 3 minutes to: _____

Riverside County Board of Supervisors
Request to Speak

Submit request to Clerk of Board (right of podium),
Speakers are entitled to three (3) minutes, subject
Board Rules listed on the reverse side of this form.

SPEAKER'S NAME: Cynthia Medaza-Collins

Address: _____
(only if follow-up mail response requested)

City: Riverside Zip: 92503

Phone #: 951-261-2276

Date: 7-12-11 Agenda # 9.1

PLEASE STATE YOUR POSITION BELOW:

Position on "Regular" (non-appealed) Agenda Item:

Support Oppose Neutral

Note: If you are here for an agenda item that is filed
for "Appeal", please state separately your position on
the appeal below:

Support Oppose Neutral

I give my 3 minutes to: _____

Riverside County Board of Supervisors
Request to Speak

Submit request to Clerk of Board (right of podium),
Speakers are entitled to three (3) minutes, subject
Board Rules listed on the reverse side of this form.

SPEAKER'S NAME: Debra Taylor Stephens

Address: 2010 Grethorn Pl
(only if follow-up mail response requested)

City: Riverside Zip: 92507

Phone #: 951-684-1072

Date: 7/12/11 Agenda # 9.1

PLEASE STATE YOUR POSITION BELOW:

Position on "Regular" (non-appealed) Agenda Item:

Support Oppose Neutral

Note: If you are here for an agenda item that is filed
for "Appeal", please state separately your position on
the appeal below:

Support Oppose Neutral

I give my 3 minutes to: _____

Riverside County Board of Supervisors
Request to Speak

Submit request to Clerk of Board (right of podium),
Speakers are entitled to three (3) minutes, subject
Board Rules listed on the reverse side of this form.

SPEAKER'S NAME: Michelle Campbell

Address: _____
(only if follow-up mail response requested)

City: _____ Zip: _____

Phone #: 951-780-3877

Date: 7/12/2011 Agenda # 9.1

PLEASE STATE YOUR POSITION BELOW:

Position on "Regular" (non-appealed) Agenda Item:

Support Oppose Neutral

Note: If you are here for an agenda item that is filed
for "Appeal", please state separately your position on
the appeal below:

Support Oppose Neutral

I give my 3 minutes to: _____

Riverside County Board of Supervisors
Request to Speak

Submit request to Clerk of Board (right of podium),
Speakers are entitled to three (3) minutes, subject
Board Rules listed on the reverse side of this form.

SPEAKER'S NAME: Irma Flores

Address: _____
(only if follow-up mail response requested)

City: Riverbank Zip: 92501

Phone #: _____

Date: 7/11/11 Agenda # 9.1

PLEASE STATE YOUR POSITION BELOW:

Position on "Regular" (non-appealed) Agenda Item:

_____ Support _____ Oppose _____ Neutral

Note: If you are here for an agenda item that is filed
for "Appeal", please state separately your position on
the appeal below:

_____ Support _____ Oppose _____ Neutral

I give my 3 minutes to: _____

Riverside County Board of Supervisors
Request to Speak

Submit request to Clerk of Board (right of podium),
Speakers are entitled to three (3) minutes, subject
Board Rules listed on the reverse side of this form.

SPEAKER'S NAME: TOM SCHULTZ

Address: _____
(only if follow-up mail response requested)

City: RIVERSIDE Zip: 92507

Phone #: (951) 680-9403

Date: 7/12/11 Agenda # 9.1

PLEASE STATE YOUR POSITION BELOW:

Position on "Regular" (non-appealed) Agenda Item:

_____ Support _____ Oppose _____ Neutral

Note: If you are here for an agenda item that is filed
for "Appeal", please state separately your position on
the appeal below:

_____ Support _____ Oppose _____ Neutral

I give my 3 minutes to: _____

Riverside County Board of Supervisors
Request to Speak

Submit request to Clerk of Board (right of podium),
Speakers are entitled to three (3) minutes, subject
Board Rules listed on the reverse side of this form.

SPEAKER'S NAME: Paul Chavez

Address: _____
(only if follow-up mail response requested)

City: Riverside zip: 92504

Phone #: 951-682-5787

Date: 07/12/2011 Agenda # Redistricting

PLEASE STATE YOUR POSITION BELOW:

Position on "Regular" (non-appealed) Agenda Item:

Support _____ Oppose _____ Neutral _____
proposal A

Note: If you are here for an agenda item that is filed
for "Appeal", please state separately your position on
the appeal below:

_____ Support _____ Oppose _____ Neutral _____

I give my 3 minutes to: _____

Riverside County Board of Supervisors
Request to Speak

Submit request to Clerk of Board (right of podium),
Speakers are entitled to three (3) minutes, subject
Board Rules listed on the reverse side of this form.

SPEAKER'S NAME: Robert Melish

Address: _____
(only if follow-up mail response requested)

City: Riverside zip: 92507

Phone #: _____

Date: 7-12-11 Agenda # 911

PLEASE STATE YOUR POSITION BELOW:

Position on "Regular" (non-appealed) Agenda Item:

Support _____ Oppose _____ Neutral _____

Note: If you are here for an agenda item that is filed
for "Appeal", please state separately your position on
the appeal below:

_____ Support _____ Oppose _____ Neutral _____

I give my 3 minutes to: _____

Riverside County Board of Supervisors
Request to Speak

Submit request to Clerk of Board (right of podium),
Speakers are entitled to three (3) minutes, subject
Board Rules listed on the reverse side of this form.

SPEAKER'S NAME: Christina Duran

Address: 3912 Ottawa Ave
(only if follow-up mail response requested)

City: RIV. Zip: 92507

Phone #: _____

Date: 7/12/11 Agenda # 9.1

PLEASE STATE YOUR POSITION BELOW:

Position on "Regular" (non-appealed) Agenda Item:

_____ Support _____ Oppose _____ Neutral

Note: If you are here for an agenda item that is filed
for "Appeal", please state separately your position on
the appeal below:

_____ Support _____ Oppose _____ Neutral

I give my 3 minutes to: _____

Riverside County Board of Supervisors
Request to Speak

Submit request to Clerk of Board (right of podium),
Speakers are entitled to three (3) minutes, subject
Board Rules listed on the reverse side of this form.

SPEAKER'S NAME: ART GARCIA

Address: 10120 MEDALLION PL
(only if follow-up mail response requested)

City: RIV. Zip: 92503-1034

Phone #: (951) 525-0350

Date: 7-12-11 Agenda # 9.1

PLEASE STATE YOUR POSITION BELOW:

Position on "Regular" (non-appealed) Agenda Item:

X Support _____ Oppose _____ Neutral

Note: If you are here for an agenda item that is filed
for "Appeal", please state separately your position on
the appeal below:

_____ Support _____ Oppose _____ Neutral

I give my 3 minutes to: _____