

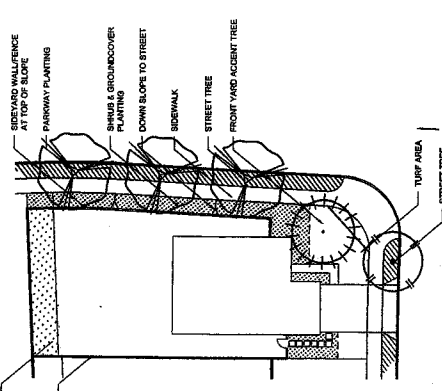
MAVA (gallons) = (E/F)(0.02)(.7 x LA + .13 x SLA)
 MAVA (gallons) = (55.14) (0.02) (27.7 x 671.227 + 0.3 x 0)
 MAVA (gallons) = (55.14) (0.02) (208.656 - 0.0)
 MAVA (gallons) = (55.14) (0.02) (208.656)
 MAVA = 13,695,900 gallons/year

MAXIMUM ANNUAL WATER ALLOWANCE (MAWA)

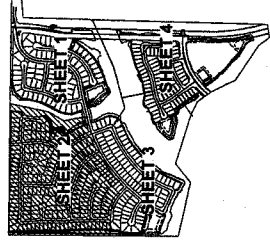
EAWU (gallons) = (E/F)(0.02)(PF x HAYE)/SLA
 EAWU (gallons) = (55.14) (0.02) (185.4 x 266.626)/75(4)
 EAWU (gallons) = (55.14) (0.02) (154.033 x 0.07)
 EAWU (gallons) = (55.14) (0.02) (116.028)
 EAWU (gallons) = 1,626.942
 EAWU (gallons) = (55.14) (0.02) (107.7 x 241.567)/49(4)
 EAWU (gallons) = (55.14) (0.02) (115.028)
 EAWU (gallons) = 6,330.427
 3,989,942 + 6,330,427 = 10,320,369 gallons/year

ESTIMATED ANNUAL WATER USE (EAWU)

SLOPE PLANTING SLOPES OVER 3 IN VERTICAL
 HEIGHT TO RECEIVE GROUNDCOVER, SLOPES
 ENGINEERING SHRUBS AND TREES
 INTERIOR PRIVACY FENCE
 TURF AREA
 STREET TREE
 FRONT YARD ACCENT TREE
 SIDEWALK
 DOWN SLOPE TO STREET
 SHRUBS & GROUNDCOVER
 PLANTING
 SEVYARD WALL/FENCE
 AT TOP OF SLOPE
 PARKWAY PLANTING



TYP. SLOPE & FRONT/SIDE YARD LANDSCAPING
 NOT TO SCALE



SHEET KEY:
 NOT TO SCALE

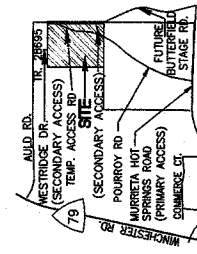
**PRELIMINARY LANDSCAPE
 MASTER PLAN (2 of 7)**
 TENTATIVE TRACT MAP NO.

36376

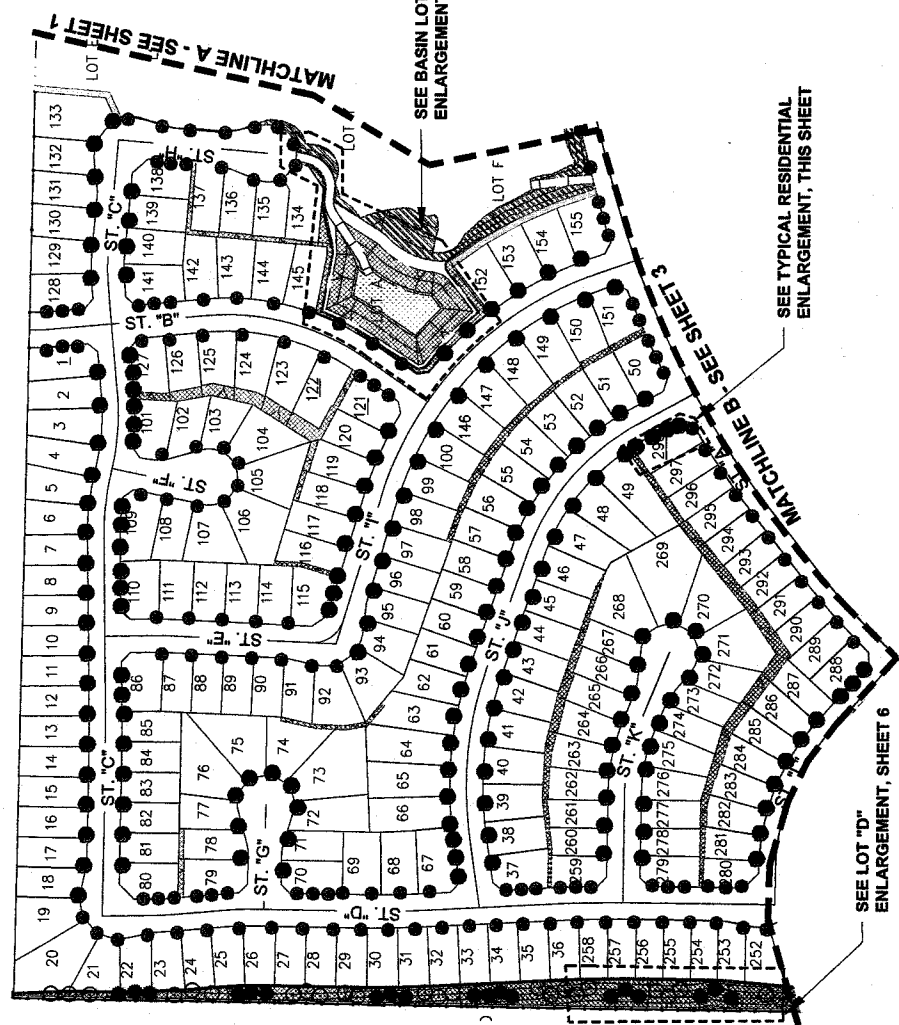
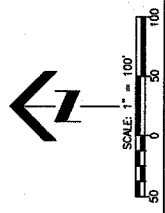
AMENDMENT NO. 1

IN THE COUNTY OF RIVERSIDE, CALIFORNIA

1770 OWANA AVENUE - SUITE 100
 RIVERSIDE, CA 92507
 (761) 961-1782/0723



VICINITY MAP
 T. 7 S., R. 2 W., SEC. 8

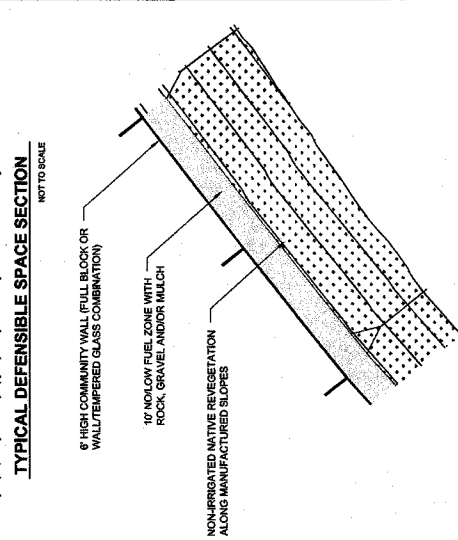
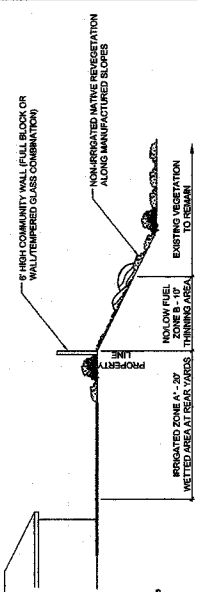
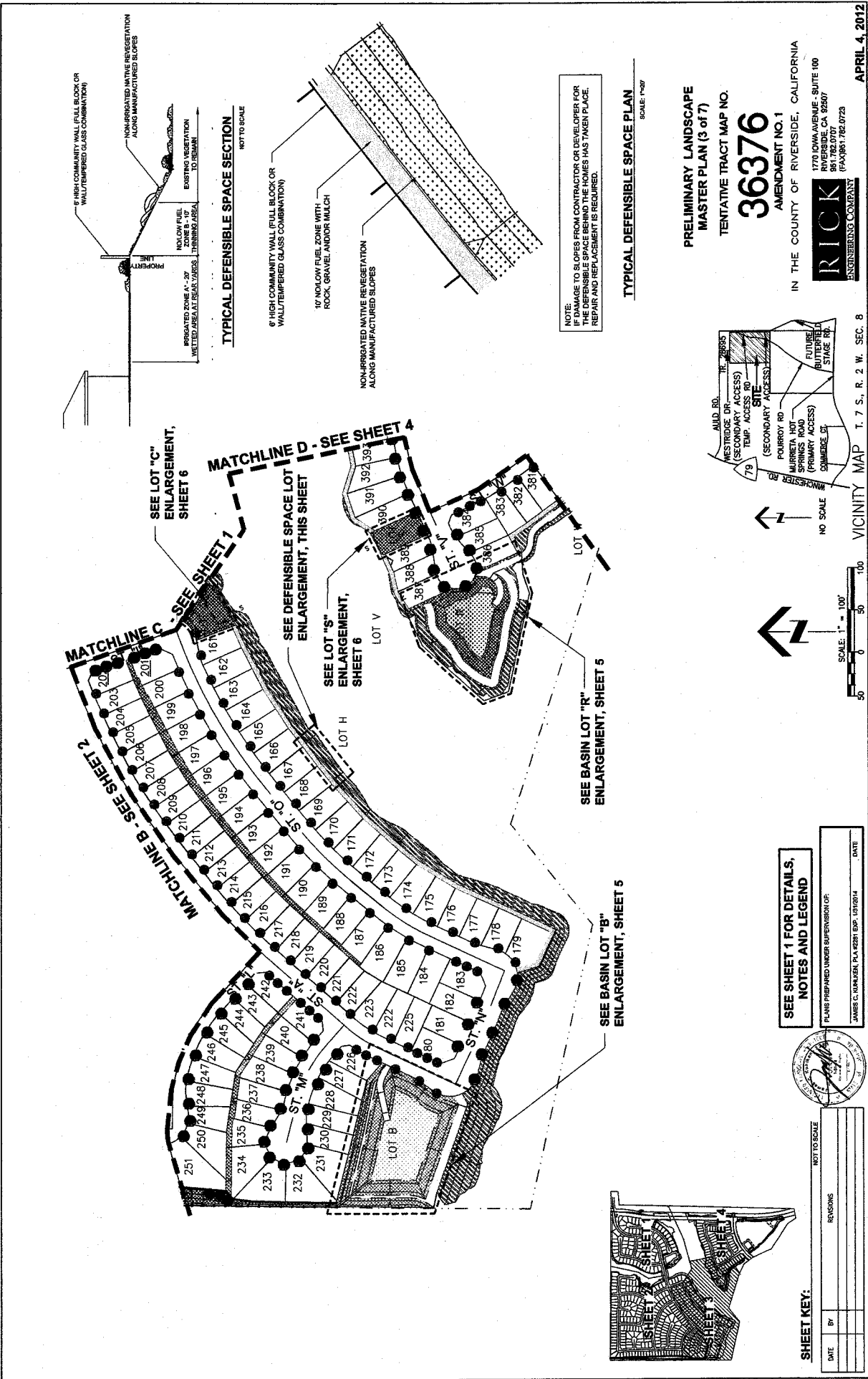


**SEE SHEET 1 FOR DETAILS,
 NOTES AND LEGEND**

PLANS PREPARED UNDER SUPERVISION OF:
 JAMES C. KUMARIN, PLACER EXP. 10320014 DATE



DATE	BY	REVISIONS

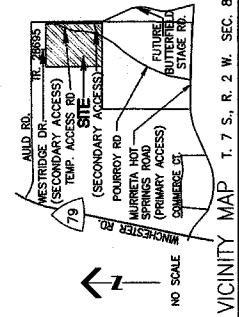


NOTE: TO SLOPES FROM CONTRACTOR OR DEVELOPER FOR THE DEFENSIBLE SPACE BEHIND THE HOMES HAS TAKEN PLACE. REPAIR AND REPLACEMENT IS REQUIRED.

PRELIMINARY LANDSCAPE MASTER PLAN (3 of 7)
TENTATIVE TRACT MAP NO. **36376**
AMENDMENT NO. 1
IN THE COUNTY OF RIVERSIDE, CALIFORNIA



1770 IOWA AVENUE - SUITE 100
951 782 0707
951 782 0773 (FAX)
951 782 0729



SEE SHEET 1 FOR DETAILS, NOTES AND LEGEND

PLANS PREPARED UNDER SUPERVISION OF:

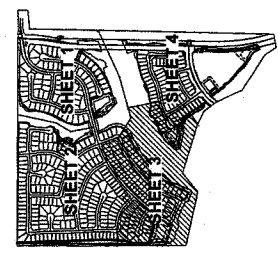
JAMES C. KURNIAWAN, P.L.A. 62261, EXP. 03/29/14

DATE

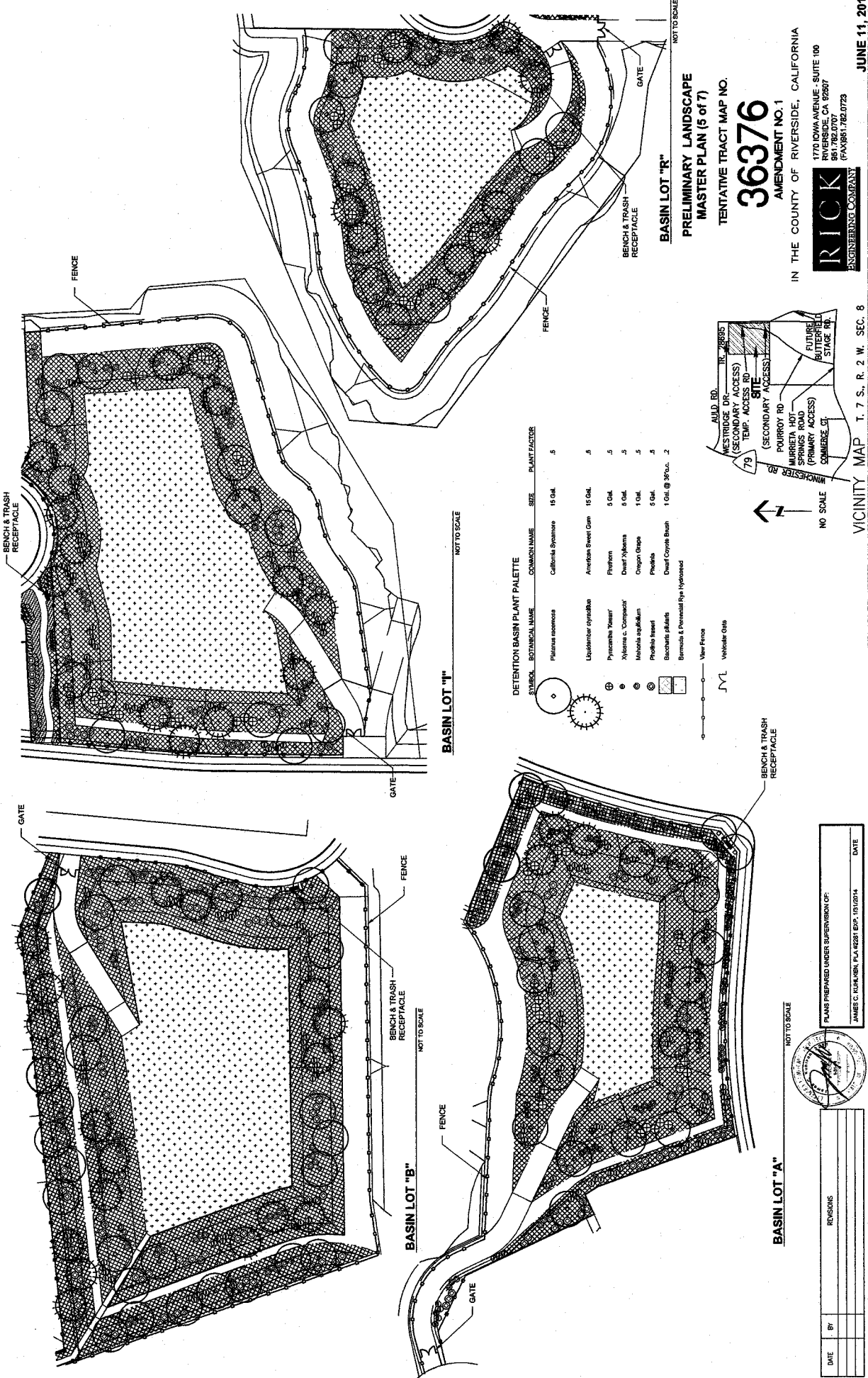


SHEET KEY:

DATE	BY	REVISIONS

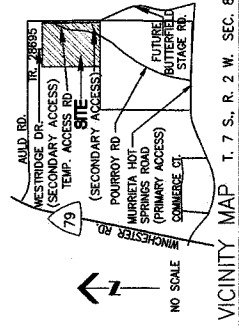


APRIL 4, 2012



DETONATION BASIN PLANT PALETTE

SYMBOL	BOTANICAL NAME	COMMON NAME	SIZE	PLANT FACTOR
○	Platycodon grandiflorus	Callionyx Bittersweet	15 Gal.	.5
⊕	Liquidambar styraciflua	American Sweet Gum	15 Gal.	.5
⊗	Pyracantha 'Tomato'	Firethorn	5 Gal.	.5
⊙	Wikstroemia c. 'Compacta'	Dwarf Wikstroemia	5 Gal.	.5
⊚	Malvella laevis	Cherry Maple	1 Gal.	.5
⊛	Phlox paniculata	Phlox	5 Gal.	.5
⊜	Baccharis pilularis	Dwarf Coyote Brush	1 Gal. @ 30% cov.	.2
⊝	Bambusa nana	Bamboo		
⊞	Persea nana	Hydrangea		



BASIN LOT "R"
 NOT TO SCALE

BENCH & TRASH RECEPTACLE

FENCE

GATE

PRELIMINARY LANDSCAPE MASTER PLAN (5 of 7)
TENTATIVE TRACT MAP NO. 363376
AMENDMENT NO. 1

IN THE COUNTY OF RIVERSIDE, CALIFORNIA
 1770 IOWA AVENUE, SUITE 100
 RIVERSIDE, CA 92507
 (951) 782-0707
 (FAX) 951-782-0725

RICK ENGINEERING COMPANY

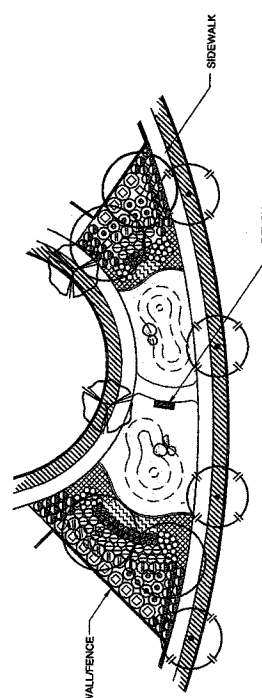
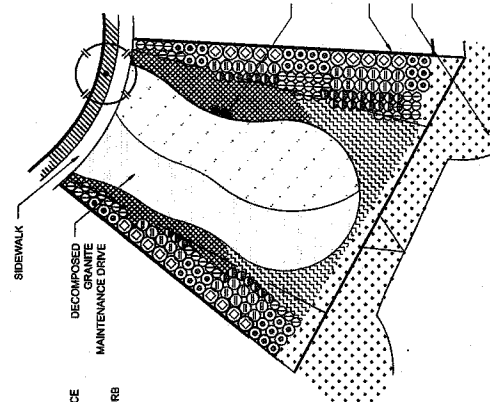
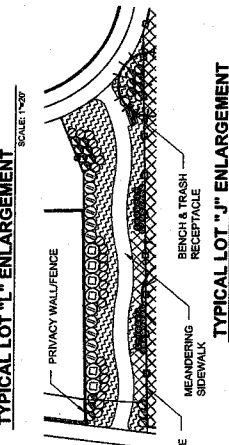
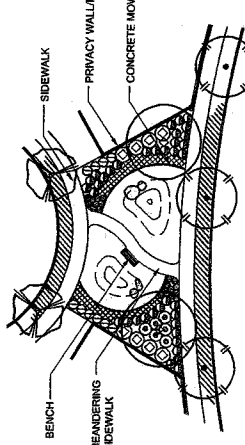
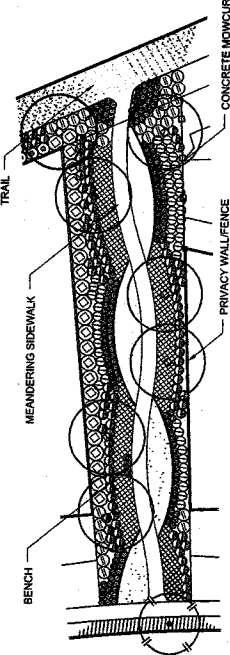
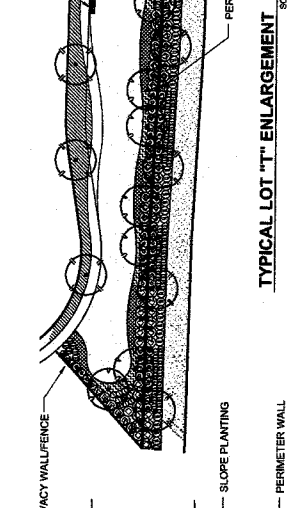
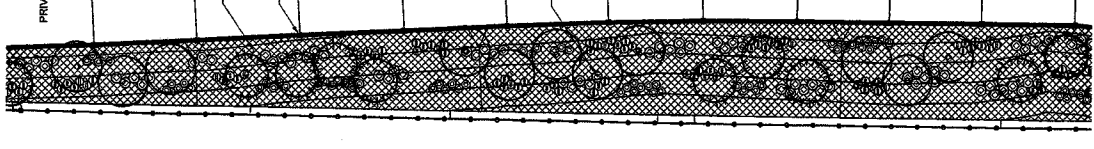
JUNE 11, 2012

DATE: _____ BY: _____

REVISIONS: _____

PLANS PREPARED UNDER SUPERVISION OF:
 JAMES C. KURAKIAN, P.L.A. 92281 EXP. 10/10/14

DATE: _____



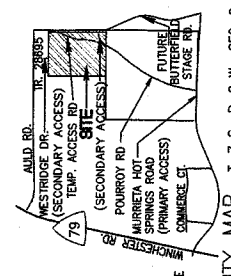
PRELIMINARY PLANT PALETTE

SYMBOL	BOTANICAL NAME	COMMON NAME	SIZE	PLANT FACTOR
(Symbol)	Accent Trees	see sheet 1		
(Symbol)	Street Trees	see sheet 1		
(Symbol)	Plantain specimens	Callitriche sp.	10 Gal.	.5
(Symbol)	Landscape specimens	American Sweet Gum	18 Gal.	.5
(Symbol)	Drives	Foreign Lily	6 Gal.	.5
(Symbol)		Ornitho	1 Gal.	.5
(Symbol)		Ornitho	1 Gal.	.5
(Symbol)		Phlox	5 Gal.	.5
(Symbol)		Dwarf Tree	5 Gal.	.5
(Symbol)		Indian Hawthorn	5 Gal.	.5
(Symbol)		Dwarf Myrtle	5 Gal.	.5
(Symbol)		SOD		.7
(Symbol)		Star Jasmine	1 Gal. @ 36" o.c.	.5
(Symbol)		Dwarf Coyote Bush	1 Gal. @ 36" o.c.	.2
(Symbol)		Plants @ 24" o.c.		
(Symbol)		Carb. Chew	5 Gal. @ 10" o.c.	.5
(Symbol)		Boston Ivy	5 Gal. @ 10" o.c.	.5

*Spacing of pathway groundcover may be changed to 18" o.c. or 24" o.c. depending on species.

PRELIMINARY LANDSCAPE MASTER PLAN (6 of 7)
TENTATIVE TRACT MAP NO. **36376**
AMENDMENT NO. 1

IN THE COUNTY OF RIVERSIDE, CALIFORNIA
1770 IOWA AVENUE - SUITE 100
RIVERSIDE, CA 92507
951.782.0707
(FAX) 951.782.0723



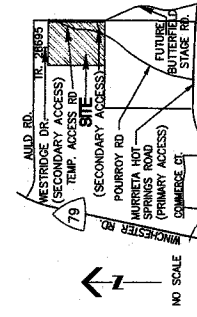
TYPICAL LOT "C" ENLARGEMENT
SCALE: 1"=30'

TYPICAL LOT "J" ENLARGEMENT
SCALE: 1"=30'

TYPICAL LOT "D" ENLARGEMENT
SCALE: 1"=30'

PLANS PREPARED UNDER SUPERVISION OF:
JAMES C. LUTHELEN, P.L.A. #2281, E.P.S. 151/2674

DATE	BY	REVISIONS	DATE



THIS SHEET IS AN OVERVIEW OF THE THIS EXHIBIT ONLY. REFER TO INDIVIDUAL SHEETS FOR ENLARGED VIEW

OVERALL PRELIMINARY LANDSCAPE PHASING PLAN TENTATIVE TRACT MAP NO.

36376

AMENDMENT NO. 1
IN THE COUNTY OF RIVERSIDE, CALIFORNIA
1770 IOWA AVENUE - SUITE 100
RIVERSIDE, CA 92507
(951) 517-1702
(951) 517-1702

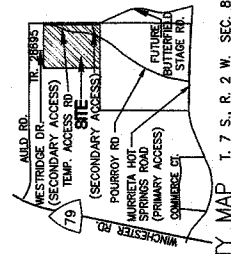
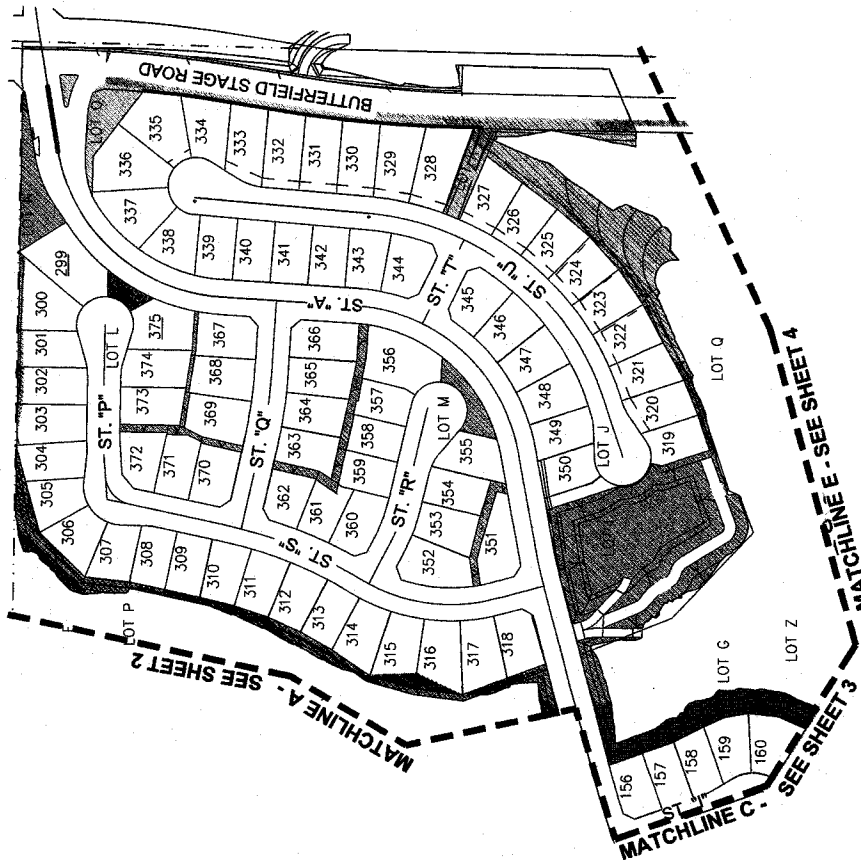
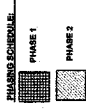


APRIL 4, 2012

PLANS PREPARED UNDER SUPERVISION OF:
JAMES C. KUHLEN, P.E. #2291 EXP. 12/2014
DATE



REVISIONS	DATE	BY

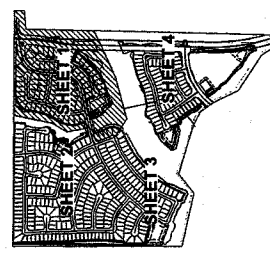


PRELIMINARY LANDSCAPE PHASING PLAN (1 of 4)
 TENTATIVE TRACT MAP NO. **36376**
 AMENDMENT NO. 1

IN THE COUNTY OF RIVERSIDE, CALIFORNIA
 1770 LUNA AVENUE, SUITE 100
 RIVERSIDE, CA 92507
 (951) 782-0707
 (FAX) 951-782-0725



APRIL 4, 2012

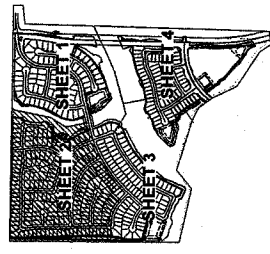
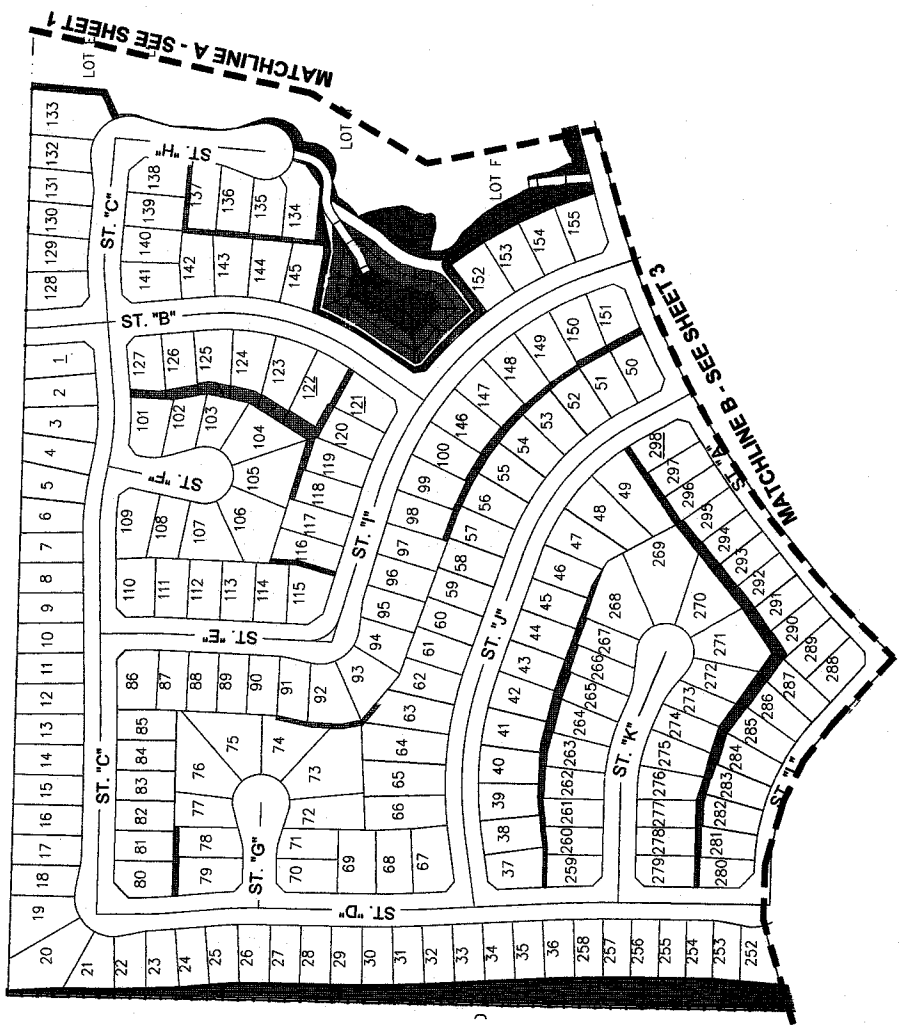


NOT TO SCALE

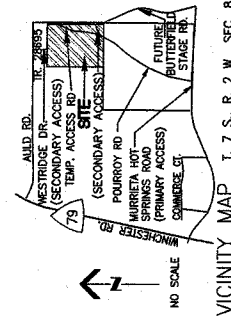
DATE	BY	REVISIONS



PLANS PREPARED UNDER SUPERVISION OF:
 JAMES C. DURKIN, P.E. A 8281 E.P.A. 12/02/04
 DATE



SHEET KEY:
 NOT TO SCALE



PRELIMINARY LANDSCAPE
 PHASING PLAN (2 of 4)
 TENTATIVE TRACT MAP NO.

36376

AMENDMENT NO. 1

IN THE COUNTY OF RIVERSIDE, CALIFORNIA

1770 OWLA AVENUE - SUITE 100
 RIVERSIDE, CA 92507
 (714) 981-7823

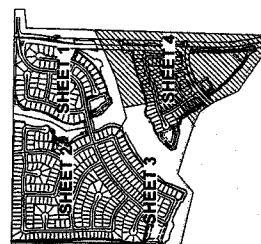
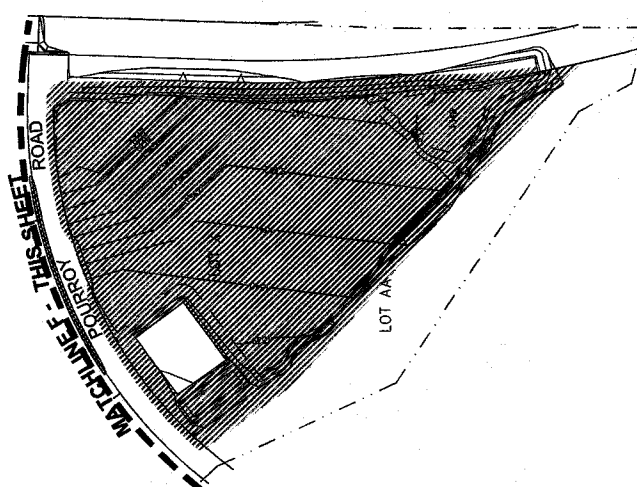
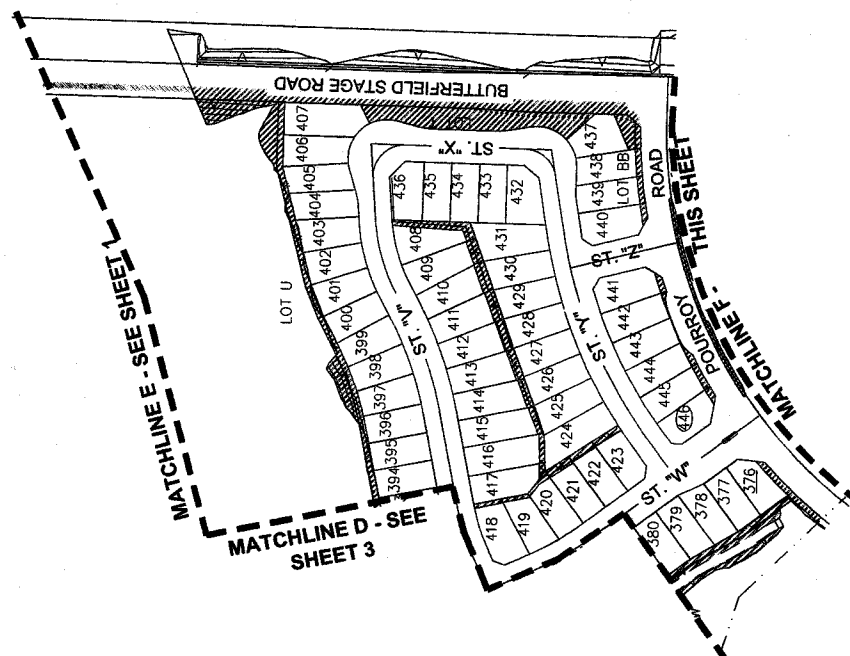


APRIL 4, 2012

PLANS PREPARED UNDER SUPERVISION OF:
 JAMES C. ROHLER, P.L.A. (228) EXP. 1/1/2014

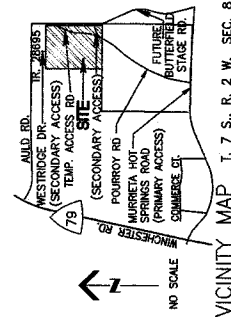


DATE	BY	REVISIONS



PRELIMINARY LANDSCAPE PHASING PLAN (4 of 4)
 TENTATIVE TRACT MAP NO. **36376**
 AMENDMENT NO. 1

IN THE COUNTY OF RIVERSIDE, CALIFORNIA
 1770 IOWA AVENUE - SUITE 100
 RIVERSIDE, CA 92507
 (PHONE) 951.782.0723
 (FAX) 951.782.0723



PLANS PREPARED UNDER SUPERVISION OF:
 JAMES C. RINKEN, P.L.A. (C.E.T.) EXP. 101534H DATE



DATE	BY	REVISIONS



LANDSCAPE PLAN

for
RANCHO BELLA VISTA PHASE III
TENTATIVE TRACT MAP NO. 36376

Prepared for:
COUNTY OF RIVERSIDE

Prepared by:
RICK ENGINEERING COMPANY

March 2012

TABLE OF CONTENTS

Landscape Concept Theory	2
Maintenance Plan	3
Plant Palette	6
Proposed Park Amenities	44

LANDSCAPE CONCEPT THEORY

The fundamental basis for the plant selection for this project was to unite the principals from the Rancho Bella Vista specific plan with updated guidelines and ordinances. Although we strive to follow the specific plan to the extent possible, recent County and State conservation measures have made certain criteria unattainable. In addition, the proximity to the open space corridor, has also played a factor in how a balance could be achieved between fire prevention guidelines and native plant communities.

Where defensible space is not a concern, such as entry monuments, street planting and small pedestrian spaces, the plant palette focuses on ornamental elements, while still incorporating water efficient practices.

Planting at the utility lots is intended to encourage residents to view these spaces as amenities, and quiet relaxing spaces. The planting in these areas was focused primarily on aesthetics.

The planting in the water quality basins, are intended to bring together the elements of the native open spaces, the protective nature of the fire prevention plant palette while still attempting some degree of ornamentals.

The areas along the open space corridor need to follow certain preservation guidelines. As such, a compromise was reached between natural plant life and fire prevention to come up with a palette that satisfies both recommendations.

LANDSCAPE MAINTENANCE PLAN

LENNAR®

March 20, 2012

Mr. Christian Hinojosa
Urban Regional Planner
County of Riverside
4080 Lemon St.
Riverside, CA 92502

Re: Tract 36376 Maintenance Plan

Dear Christian:

The recent submittal for the proposed Tentative Tract Map 36376 consisting of 446 homesites and offsite Butterfield Stage Road improvements consists of both public and private facilities.

These facilities shall be maintained by the following entities:

Facility	Type of Maintenance	Entity
WQMP Basins Lots A, B, I, R	Landscape Maintenance	Homeowner Association
Open Space Lots O, N. and Walkways Lots L, M and Slope Lot D	Landscape Maintenance	Homeowner Association
Open Space Lots E, F, G, H, P, Q, U, V, W	Landscape/Fuel Mod	Homeowner Association
Sewer/S.D. Easements Lots J, K	Landscape Maintenance	Homeowner Association
Preserved Open Space Lots Y, Z, AA	Habitat Conservation Plan	Long Term Manager
Butterfield Stage Road & Pourroy Road Landscape in Right of Way	Landscape Maintenance	Valleywide Parks & Recreation
Park Lot X	Landscape/Parking Lot	Valleywide Parks & Recreation

391 N. Main St., Suite 300, Corona, CA 92880
951-817-3600 fax 951-817-3650

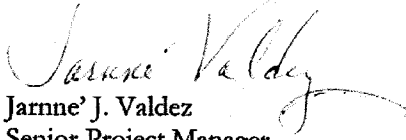
LENNAR.COM

LENNAR

Facility	Type of Maintenance	Entity
Butterfield Stage Road & Interior Streets	General Road Maintenance	Transportation Department

Please feel free to contact me for further clarification.

Sincerely,


Jarnne J. Valdez
Senior Project Manager

391 N. Main St., Suite 300, Corona, CA 92880
951-817-3600 fax 951-817-3650

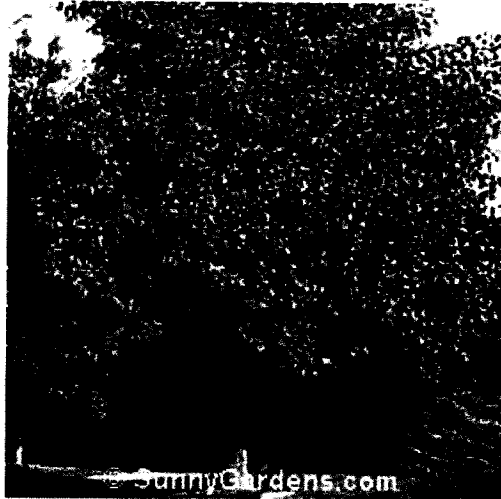
LENNAR.COM

PLANT PALETTE

Alnus cordata

Italian Alder, Alnus pyrifolia

There are about 30 species and many cultivars of the short-lived Alder. Most of these deciduous trees like colder climates and moist or wet soils along streams and ponds. Use in grove plantings or as single, multi-trunked trees. Spring flowers are followed by toothed leaves and cone-like fruits. Roots can be shallow and invasive. They grow rapidly in infertile and poorly drained soils. Prune in winter to remove dead or damaged limbs.



Attributes - Alnus cordata

Plant Type: Shrub, Tree

Foliage: Deciduous

Height: 30 ft. to 75 ft.

Width: 30 ft.

Sunlight: Full Sun, Partial Sun

Climate: Zones 5, 6, 7

Notes: Thrives in Acid Soil, Dry Climates, Hot Climates, Wet Soil. Drought Tolerant, Low Maintenance.

The new bark on this fast-growing pyramidal to pyramidal-rounded tree is glistening brown. Yellow catkins appear in late winter and early spring, followed by heart-shaped leaves.

Related Plants

Alnus oregona, Alnus rhombifolia, Alnus rugosa, Alnus sinuata

Plant Index: **A B C D E F G H I J K L M N O P Q R S T U V W X Y Z**



San Marcos GROWERS

[NEW USER ?](#)

 wholesale login

 password
[home](#)
[products](#)
[purchase](#)
[gardens](#)
[about us](#)
[resources](#)
[contact](#)

Web Site Search

Plant Database



Search by Plant Name

General Plant Info



Search for any word

Advanced Search >>

Search by size, origins, color, cultural needs, etc.

Site Map

Retail Locator

Plant Listings

[PLANT TYPE](#)
[PLANT GEOGRAPHY](#)
[PLANT INDEX](#)
[ALL PLANT LIST](#)
[PLANT IMAGE INDEX](#)
[PLANT INTROS](#)
[SPECIALTY CROPS](#)
[NEW 2011 PLANTS](#)
[PRIME LIST>](#)

for OCTOBER

 GO
NATIVE

 GO
SUCCULENT

Weather Station

Plant Database Search Results > Anigozanthos 'Bush Gold'

Anigozanthos 'Bush Gold' - Yellow Kangaroo Paw



Habit and Cultural Information

Category: Perennial

Family: Haemodoraceae

Origin: Australia (Australasia)

Evergreen: Yes

Flower Color: Yellow

Bloomtime: Spring/Fall

Parentage: (A. flavidus x A. humilis)

Height: 2-3 feet

Width: 1-2 feet

Exposure: Full Sun

 Irrigation [\(H2O Info\)](#): Medium Water Needs

Winter Hardiness: 25-30° F

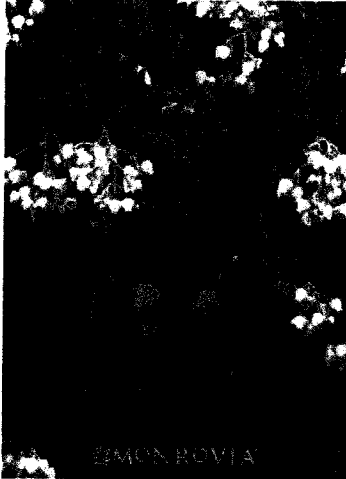
Anigozanthos 'Bush Gold' (Yellow Kangaroo Paw) - This midsized kangaroo paw has foliage to 2 feet tall with lightly branched 3 foot flower stems bearing masses of bright yellow flowers throughout spring and summer and sporadically the rest of the year. Plant in a sunny and open position in the garden in moderately well drained soils (this cultivar more tolerant to heavier soils). Irrigate regularly and fertilize in spring (not heavily and keep Phosphorus on the low side). Fans only flower once and need to be cleaned out after the flowering period so remove the old leaves down to as low as possible at the end of a season. Care should be exercised that the new emerging fans are not damaged. Hardy and evergreen to about 25 degrees F and will re-sprout after being knocked down by temperatures as low as 20° F. 'Bush Gold' is a great garden plant and nice for flower arrangements. It is the result of a genetic mutation of A. 'Bush Glow', a hybrid of A. flavidus with A. humilis. Noted garden writer and Anigozanthos hybridizer Angus Stewart thinks this it the best yellow mid sized paw. In his book "Gardening on the Wild Side" he states: "The vibrant yellow flowers of this cultivar coupled with its bombproof vigor have made it popular commercially. I highly recommend it as one of the toughest of all the hybrid kangaroo paw cultivars." This description is based on our research of Anigozanthos 'Bush Gold' and our observations of it growing in the nursery, in our own garden and in other gardens. We would appreciate getting feedback from anyone who has any additional information about this plant, even if they disagree with what we have written.

[\[MORE INFO\]](#)



Compact Strawberry Bush

Arbutus unedo 'Compacta'



Dense, upright branches hold masses of white flowers followed by red strawberry-like fruit. Tolerates poor soil. Use as single accent shrub or mass for screens or hedges. Evergreen.

Care Information

Follow a regular watering schedule during the first growing season to establish a deep, extensive root system. Feed with a general purpose fertilizer before new growth begins in spring. For a tidy, neat appearance, shear annually to shape. Pruning time: winter.

Design Ideas

This fine evergreen can be grown as a large shrub or a multi-trunked small tree, where its ruddy, peeling bark can be admired. Flowers and fruit can appear at the same time. Plant it as a single specimen or as a large, informal hedge.

Botanical Pronunciation:	AR-bu-tus EW-nee-do kom-PAK-ta
Key feature:	Hedge Plant
Plant type:	Shrub
Deciduous/evergreen:	Evergreen
Cold hardiness zones:	7 - 9
Light needs:	Partial to full sun
Sunset climate zones:	4 - 24
Water Needs:	Once established, needs only occasional watering.
Average landscape size:	Moderate growing 6 to 8 ft. tall, 5 to 6 ft. wide.
Growth rate:	Moderate
Growth habit:	Round
Flower attribute:	Showy Flowers
Special features:	Attracts Hummingbirds, Dwarf Plant
Landscape uses:	Border, Firescaping/Fire Wise, Privacy Screen
Flower color:	White
Blooms:	Fall
Foliage color:	Green
Item no.:	0290

This page located at <http://www.monrovia.com/plant-catalog/plants/103/compact-strawberry-bush.php>



San Marcos GROWERS

[NEW USER?](#)

[home](#)
[products](#)
[purchase](#)
[gardens](#)
[about us](#)
[resources](#)
[contact](#)

Web Site Search

Plant Database

Search by Plant Name

General Plant Info

Search for any word

Advanced Search >>

Search by size, origins, color, cultural needs, etc.

Site Map

Retail Locator

Plant Listings

[PLANT TYPE](#)
[PLANT GEOGRAPHY](#)
[PLANT INDEX](#)
[ALL PLANT LIST](#)
[PLANT IMAGE INDEX](#)
[PLANT INTROS](#)
[SPECIALTY CROPS](#)
[NEW 2011 PLANTS](#)
[PRIME LIST>](#)
for OCTOBER

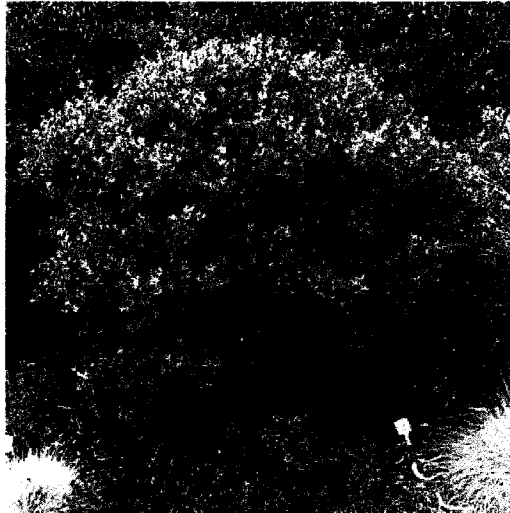
GO
NATIVE

GO
SUCCULENT

Weather Station

Plant Database Search Results > Arctostaphylos 'Sunset'

Arctostaphylos 'Sunset' - Manzanita



[2nd Image]

Arctostaphylos 'Sunset' (Manzanita) - This hybrid of *A. pajaroensis* and *A. hookeri* forms a dense, mounding shrub to 4 feet tall by 5 feet wide with shiny medium green leaves that are bright copper when young; young twigs are covered with fine white hairs. Mature bark is light brown. During the plant's shedding of old bark the new bark is a honey brown. Pinkish white flowers appear in spring. Hardy to 5 degrees F. This description is based on our research of Arctostaphylos 'Sunset' and our observations of it growing in the nursery, in our own garden and in other gardens. We would appreciate getting feedback from anyone who has any additional information about this plant, even if they disagree with what we have written.

Habit and Cultural Information

Category: Shrub
 Family: Ericaceae (Heaths, Heathers)
 Origin: California (U.S.A.)
 Evergreen: Yes
 Flower Color: Pink
 Bloomtime: Spring
 Parentage: (*A. hookeri* x *A. pajaroensis*)
 Height: 4-5 feet
 Width: 4-5 feet
 Exposure: Full Sun
 Drought Tolerant: Yes
 Irrigation (**H2O Info**): Low Water Needs
 Winter Hardiness: 0-10° F

[MORE INFO]



SEVENOAKS

NATIVE NURSERY

Shrubs

Baccharis pilularis *coyote bush*

Habit: growing in two different forms, the coastal version of *Baccharis pilularis* is low and prostrate, while the interior form is upright and shrubby. The evergreen leaves are covered with resin glands, which vary the coloring of the shrub from dark green to gray. The flowers are dioecious, meaning the female and male flowers are on separate plants. As part of the *Asteraceae* family the inflorescences are composed of many disc flowers. It has an extensive root system with the tap root growing up to 10 ft long, as well as forming many outward-growing roots.

Ecology: found in Oregon, California and New Mexico, coyote bush prefers settling near the coast, or in canyons from sea level to 2000 ft (600 ft).

Growing Conditions: full sun, *Baccharis pilularis* can tolerate drought once established, and is more deer resistant than most plants. When planting, plant further apart than normal as the underground growth is much greater than that above ground.

In the garden, coyote bush can be used as a hedge, or in areas that are prone to erosion. It should be pruned back periodically simulating fires/grazing that would occur naturally in the wild. Coyote bush is beneficial as habitat for birds, and other small animals; cover for native perennials to establish themselves; nectar for many insects.



Type:

Evergreen Shrub

Height:

1-9 ft. (0.3-3 m)

Width:

2-9 ft. (0.6-3 m)

USDA Zones:

5-11



Heritage Perennial Profile

Here's the complete description for this Heritage Perennial. Drop in any time to see the rest of our collection.

Plant Number: 1.130.050

USDA Zone: 1 - 9

Appearance

Flower Colour
White

Blooming Time
Early Summer
Late Spring

Foliage Color
Silver

Plant Uses & Characteristics

Accent: Good Texture/Form
Border
Containers
Deer Resistant
Light Tolerant
Shading
Rabbit Resistant
Evergreen
Ground Cover
Massed

Flower Head Size
Very Small

Height
15-20 cm
6-8 inches

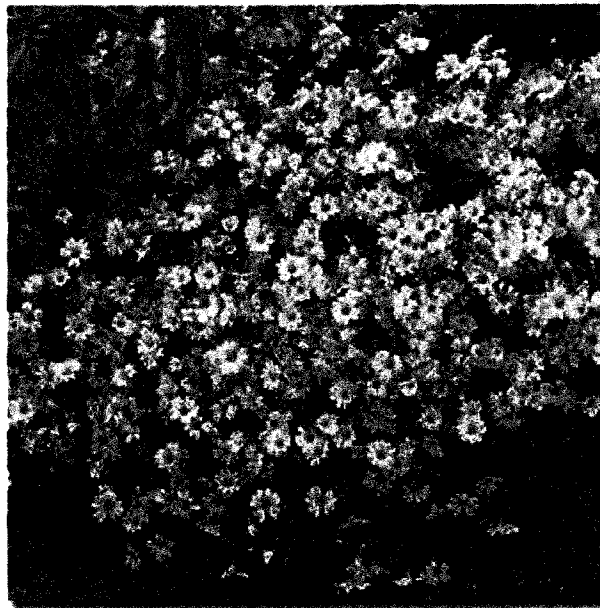
Spread
60-75 cm
23-29 inches

Foot Traffic
Light

Growth Rate
Fast

► **Cerastium tomentosum**

Common name : Snow-in-Summer



A very useful groundcover perennial, often grown in dry, sunny areas with poor soil. Plants form a low, fast-spreading mat of silvery-grey leaves, studded with tiny white star flowers in late spring and early summer. An indestructible choice for difficult sites, but be sure to plant this where its spreading habit will not become a problem. Beautiful spilling over rock walls or on steep sunny slopes, used as a lawn substitute. Also grows well in tubs or mixed containers. Easily divided in spring or fall. Plants should be clipped hard or mowed (to 2 inches) after blooming to maintain a tidy habit.

What others say about this plant...

Think about snow-in-summer as a problem solver in desperate situations. Rock walls, sandy sunny slopes, and dry, rocky soils may seem inhospitable to most, but not to this robust spreader!; Larry Hodgson, Perennials for Every Purpose

Conditions

Sun Exposure
Full Sun

Soil Type
Normal
Sandy
Clay

Soil pH
Neutral
Alkaline
Acid

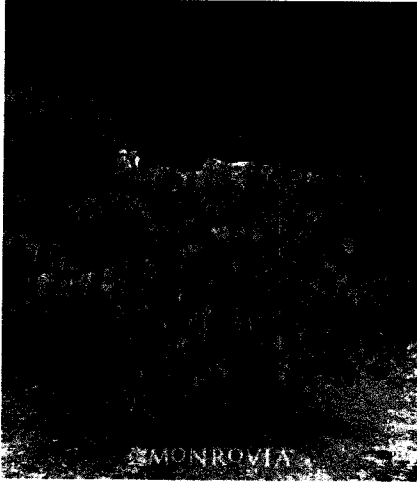
Soil Moisture
Average
Dry

Care Level
Easy



Western Redbud

Cercis occidentalis



Beautiful in all seasons, this native Redbud is well worth growing. Highly ornamental multi-trunked small tree or shrub is covered with masses of brilliant rose-purple blossoms in early spring. Long seed pods that start out lime green and age to purple-brown appear in summer. The rounded heart-shaped leaves emerge apple green and develop to bluish-green. In colder areas, the leaves take on a nice yellow or red fall color. The smooth silvery-gray branches are picturesque in the winter landscape.

Care Information

Tolerates alkaline and clay soils, pH 5.5-8. Needs a winter chill to set flowers set properly.

History

Native Californians use the twigs of the Western Redbud to weave baskets. The bark provides a faint reddish dye for the finished basketry.

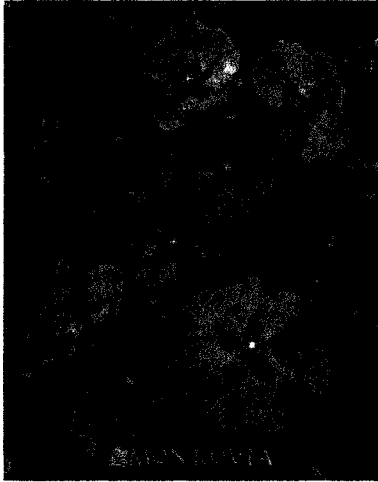
Key feature:	Year round interest
Plant type:	Tree
Garden styles:	Asian/Zen, Contemporary, Cottage
Deciduous/evergreen:	Deciduous
Cold hardiness zones:	6 - 9
Light needs:	Partial to full sun
Water Needs:	Requires little water once established.
Average landscape size:	Reaches fifteen feet tall and ten feet wide.
Growth habit:	Narrow
Flower attribute:	Showy Flowers
Special features:	Attractive Bark, Attracts Birds, Attracts Hummingbirds, Dramatic Foliage Color, North American Native, Waterwise, Year-round Interest
Landscape uses:	Mass Planting, Specimen
Flower color:	Purplish-pink
Blooms:	Spring
Foliage color:	Light Green
Item no.:	4301

This page located at <http://www.monrovia.com/plant-catalog/plants/3124/western-redbud.php>



Purple Rock Rose

Cistus x purpureus



Neat, compact shrub with showy rose-purple blooms with maroon spots. Tolerates drought, poor soil, little maintenance. Great for informal divider, in rock gardens or accent plant. Evergreen.

Care Information

Follow a regular watering schedule during the first growing season to establish a deep, extensive root system. Feed with a general purpose fertilizer before new growth begins in spring. For a formal appearance, shear annually after flowering. Pruning time: summer after flowering.

Design Ideas

This popular Rock Rose is at home in the traditional landscape and the rugged dryland garden. Beautiful in bloom, it looks fine as a single specimen or in a group to fill overly large planting areas. Makes a heat-tolerant background and foundation plant for full sun plantings. Fits along fence lines and spreads enough to be a filler too. Its muted foliage color and unique textural quality is valuable for complementing rugged conifers and wild-looking perennials. Even does exceptionally well in the reflected heat street side or along the driveway.

Companion Plants

Purple Rock Rose fits with favorite easy-care flowering shrubs like Indian Princess™ Indian Hawthorne (*Raphiolepis indica* 'Monto'), Variegated Mock Orange (*Pittosporum tobira* 'Variegatum'), Wheeler's Dwarf Mock Orange (*Pittosporum tobira* 'Wheeler's Dwarf') and Pink Abelia (*Abelia x* 'Edward Goucher'). Looks beautiful accented by Petite Plum™ Crape Myrtle (*Lagerstroemia indica* 'Monum') and Petite Indigo™ Dwarf Butterfly Bush (*Buddleia davidii* nanhoensis 'Mongo').

History

Oil rich rockroses cloak the arid Mediterranean region from Portugal to Italy. Early breeders of the 1820s sought to coax more cold hardy plants for cultivation in the north for oil production. Later M. Edouard Bernet of Antibes became the *Cistus* specialist and between 1860 and 1875 he was responsible for over 230 new cultivars. Though long out of favor as the demand for oil evaporated, only the ornamental varieties such as *C. x purpureus* remain in cultivation.

Lore

Oil harvested from the rockrose plants was known as labdanum, a valuable alternative to rare whale ambergris in the ancient perfume trade.

Botanical Pronunciation: SIS-tus per-PU-re-us

Key feature: Firescaping Plant

Plant type: Shrub

Garden style: Mediterranean

Deciduous/evergreen: Evergreen

Cold hardiness zones: 8 - 11

Light needs: Full sun

Sunset climate zones: 6 - 9, 14 - 24

Water Needs: Once established, needs only occasional watering.

Average landscape size: Moderate grower to 4 ft. tall, 4 to 6 ft. wide.

Growth rate: Moderate

Growth habit: Compact, Round

Flower attributes: Fragrant, Showy Flowers

Special features: Deer Resistant, Easy Care, Improved Pest and Disease Resistance, Waterwise, Year-round Interest

Landscape uses: Border, Container, Erosion Control, Firescaping/Fire Wise, Hedge, Mass Planting, Rock Garden, Seacoast Exposure

Problem/solution: Deer Resistant, Erosion Control

Flower color: Purple

Blooms: Late spring into summer

Foliage color: Green

Item no.: 2460



San Marcos GROWERS

[NEW USER?](#)

wholesale login

password

[home](#)

[products](#)

[purchase](#)

[gardens](#)

[about us](#)

[resources](#)

[contact](#)

Web Site Search

Plant Database



Search by Plant Name

General Plant Info



Search for any word

Advanced Search >>

Search by size, origins, color, cultural needs, etc.

Site Map

Retail Locator

Plant Listings

- PLANT TYPE
- PLANT GEOGRAPHY
- PLANT INDEX
- ALL PLANT LIST
- PLANT IMAGE INDEX
- PLANT INTROS
- SPECIALTY CROPS
- NEW 2011 PLANTS
- PRIME LIST>
- for OCTOBER

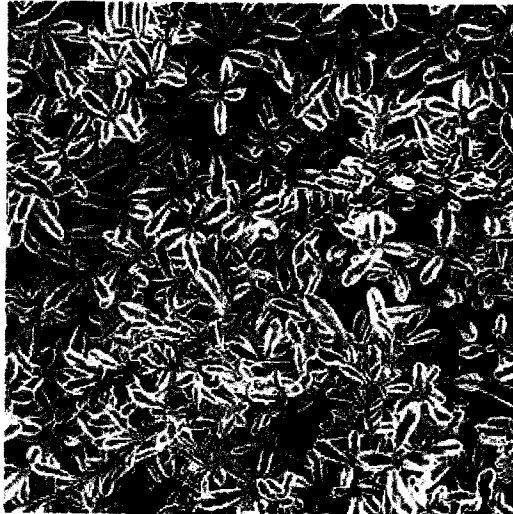
GO NATIVE

GO SUCCULENT

Weather Station

Plant Database Search Results > Coprosma kirkii 'Variegata'

Coprosma kirkii 'Variegata'



Habit and Cultural Information

- Category: Shrub
- Family: Rubiaceae (Madders)
- Origin: New Zealand (Australasia)
- Evergreen: Yes
- Variegated Foliage: Yes
- Bloomtime: Not Significant
- Height: 1-2 feet
- Width: 4-6 feet
- Exposure: Full Sun
- Seaside: Yes
- Irrigation ([H2O Info](#)): Medium Water Needs
- Winter Hardiness: 10-15° F

Coprosma kirkii 'Variegata' - A low growing woody groundcover that grows to 1 foot and spreads to 4 to 6 feet wide with narrow bluntly rounded small gray-green leaves that have creamy margins. Plant in coastal full sun or light shade and irrigate regularly to occasionally. Can survive temperatures down to about 10 degrees F. This is a great small scale groundcover that flows outward with branches near the extremities flat to the ground. Good for covering banks, spilling over walls or as a filler in large containers. A very useful plant in in near coastal situations. This description is based on our research of *Coprosma kirkii* 'Variegata' and our observations of it growing in the nursery, in our own garden and in other gardens. We would appreciate getting feedback from anyone who has any additional information about this plant, even if they disagree with what we have written.



African Iris

Diets iridioides



Exotic white flowers with yellow and purple-blue markings burst from stalks amid stiff, iris-like foliage. Profuse bloomer; blooms last only one day but are quickly replaced. Fire resistant.

Care Information

Follow a regular watering schedule during the first growing season to establish a deep, extensive root system. For a neat appearance, remove old flower stalks. Divide clumps every 2 to 3 years in early spring.

Design Ideas

Here is a white Iris that is simple to maintain and fits into virtually any garden, from prim perennial borders to low-maintenance parking lots! One of the best all-purpose plants for home landscapes, it stands up to heat, drought and neglect. Flank gateways with them, add to courtyards and entry gardens, or spot into larger foundation plantings, where the vertical reed-like foliage makes a great accent or contrast. A perfect plant to grow beside koy ponds, streambeds and fountains. Evokes the Mediterranean countryside when planted below or beside wall fountains. Or, evoke ancient Rome with this Iris in classical terra-cotta pots on pedestals or lined on steps. Grow as a low hedge around edges of porches and decks.

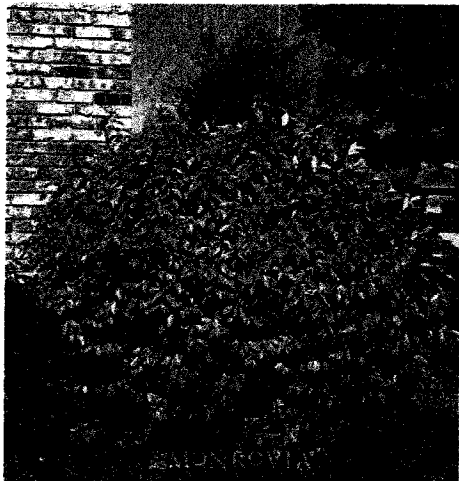
Synonym:	Moraea iridioides
Botanical Pronunciation:	mor-EE-a eye-rid-i-OH-deez
Key feature:	Easy Care Plant
Plant type:	Perennial
Deciduous/evergreen:	Evergreen
Cold hardiness zones:	8 - 11
Light needs:	Partial to full sun
Water Needs:	Once established, needs only occasional watering.
Average landscape size:	Moderate grower to 2 to 3 ft. tall, 3 to 4 ft. wide.
Growth rate:	Moderate
Flower attribute:	Showy Flowers
Special features:	Easy Care, Waterwise
Landscape uses:	Border, Container, Firescaping/Fire Wise, Hedge, Poolside, Rock Garden, Woodland Garden
Flower color:	White
Blooms:	Spring through late fall
Foliage color:	Green
Item no.:	6160

This page located at <http://www.monrovia.com/plant-catalog/plants/1856/african-iris.php>



Fruitland Silverberry

Elaeagnus pungens 'Fruitlandii'



Densely-branched evergreen shrub creates a superb screen, hedge, barrier, or naturalizer. Silvery scales on rich green round leaves with wavy edges; silvery-white and brown scales on underside.

Care Information

Follow a regular watering schedule during the first growing season to establish a deep, extensive root system. Feed with a general purpose fertilizer before new growth begins in spring. For a tidy, neat appearance, shear annually to shape. Pruning time: winter.

Design Ideas

Use this tough, drought-resistant shrub in hot and dry places. Its dense foliage serves as a fast-growing screen when arranged in small groups or a true hedge. Covers up unattractive views and fits naturally into wild gardens. Blends well in drought-resistant gardens as an individual or in groups to support more dramatic trees and shrubs.

Botanical Pronunciation: e-Ie-AG-nus PUN-jenz

Key feature: Easy Care Plant

Plant type: Shrub

Deciduous/evergreen: Evergreen

Cold hardiness zones: 6 - 9

Light needs: Full sun

Water Needs: Once established, needs only occasional watering.

Average landscape size: Fast growing to 6 to 10 ft. high, equal width.

Growth rate: Fast

Growth habit: Round

Flower attribute: Fragrant

Special features: Easy Care, Ornamental Berries

Landscape uses: Border, Espalier, Privacy Screen, Seacoast Exposure, Windbreak

Flower color: White

Blooms: Fall

Foliage color: Green

Item no.: 3195

A TREE A DAY

2011

[Ads by Google](#)
[Tree Pictures](#)
[Tree Pruning](#)
[Tree Care](#)
[Prune Tree](#)



Stats

COMMON NAME Bronze loquat
 BOTANICAL NAME Eriobotrya deflexa
 HEIGHT 20 feet
 TYPE Broadleaf evergreen



Bronze loquat

Landscaping in San Diego

Nature Designs Services all of SD
 Residential & Commercial Call Today
www.naturedesigns.net

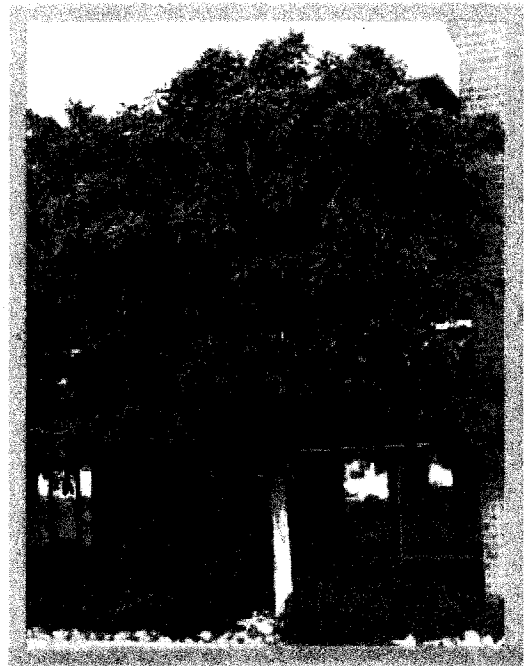
Certified Arborist

all phases of tree work, landscape
 management. VISA, MC
vacatreecare.com

[AdChoices](#)

Here is a lovely tree that has everything going for it, everything that is except cold hardiness. It is the Bronze loquat, or Eriobotrya deflexa. This is one of the more tropical loquats and is even more limited in range than its better known cousin, the Japanese loquat, or Eriobotrya japonica. But the lack of cold tolerance may not be too big of a problem if it is kept in mind that Bronze loquat is small enough for pot culture or could be accommodated in most greenhouses and its assets are so excellent that its more than worth the effort. And for those who live in warm weather areas such as the southern US and Australia, then this is a must-have garden treasure.

Bronze loquat has a neat habit and compact growth making it an ideal specimen or patio tree, or even street tree since it can be grown beneath power lines. It also blends well into a shrub border and can be espaliered against a south facing wall, which is popular in the UK. Bronze loquat only reaches a height of 15 to 20 feet with a 10 to 15 foot spread if grown in full sun. Its chief asset is the large, heavily textured, evergreen leaves, which, when emerging in spring, are bright red-bronze and burnished copper. And they maintain this color for a considerable period of time before eventually turning a rich dark green for summer. In addition to the striking foliar display there are small, white flowers, produced on showy panicles in spring. The flowers are also fragrant and will perfume your garden for weeks. These are followed by small fruits, similar to the Japanese loquat but not palatable, though the wildlife will appreciate them.



Trees by size



San Marcos GROWERS

NEW USER?

wholesale login

password

home

products

purchase

gardens

about us

resources

contact

Web Site Search

Plant Database

erythrina Search by Plant Name

General Plant Info

erythrina Search for any word

Advanced Search >> Search by size, origins, color, cultural needs, etc.

Site Map

Retail Locator

Plant Listings

- PLANT TYPE
PLANT GEOGRAPHY
PLANT INDEX
ALL PLANT LIST
PLANT IMAGE INDEX
PLANT INTROS
SPECIALTY CROPS
NEW 2011 PLANTS
PRIME LIST>
for OCTOBER

GO NATIVE

GO SUCCULENT

Weather Station

Plant Database Search Results > Erythrina speciosa 'Pink'

Erythrina speciosa 'Pink' - Pink Coral Tree



Habit and Cultural Information

Category: Tree
Family: Fabaceae = Pea Family
Origin: Brazil (South America)
Flower Color: Pink
Bloomtime: Summer/Fall
Height: 12-16 feet
Width: 8-12 feet
Exposure: Full Sun
Irrigation (H2O Info): Medium Water Needs
Winter Hardiness: 25-30° F
May be Poisonous (More Info): Yes

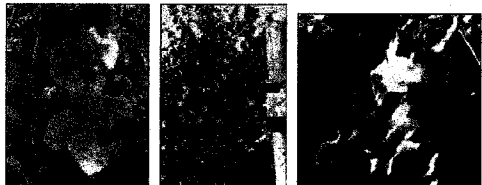
Erythrina speciosa 'Pink' (Pink Coral Tree) - This is a deciduous small tree or multi-stemmed shrub to about 16 feet tall. It has pink flowers in the later summer and fall. It prefers the full sun and has moderate watering needs. Blooms naked much like E. coralloides. Our plants from cuttings given to us by the San Diego Zoo. Has proven hardy to at least 28 F. This description is based on our research of Erythrina speciosa 'Pink' and our observations of it growing in the nursery, in our own garden and in other gardens. We would appreciate getting feedback from anyone who has any additional information about this plant, even if they disagree with what we have written.

[MORE INFO]

Fremontodendron Pacific Sunset

Identification

Genus: Fremontodendron **Species:** None **Variety:** None
Cultivar: Pacific Sunset
Common name: Flannel Bush.



Description

Pacific Sunset was introduced by Rancho Santa Ana Garden. This flannel bush is a hybrid between *F. californicum* and *F. mexicanum*. Flannel bushes like lighter soils with moisture nearby, but not next them. Their favorite spots are sandy washes with moisture down 8 ft or so below grade level. In heavy soils any extra rainfall or one summer watering will kill the bush after it gets 3 years old. The pathogens take no hostages and although they do not always die in adobe, they are much harder to work with. If you live with adobe and want Fremontias make a big, big flower bed 3 feet or so deep and fill it with sand, plant it take and water until the roots reach the adobe below, then no more water. If you live in the interior or deserts water extra in spring (also in winter if you are in the deserts), but no summer water after the second year. Pacific Sunset can be a huge plant. The size of a single car garage. Do not plant in a little tract lot if you wish to be able to open the back door, or you really want to bug a neighbor. We made that mistake more than 20 years ago.



You could see the flowers from 400 feet away, but you had a great deal of trouble walking around the bushes as we planted them 10 feet off of a walkway, not enough room! Use *F. 'Ken Taylor'* or *Fr. decumbens* in smaller yards

Characteristics

Fremontodendron Pacific Sunset Flannel Bush tolerates sand.

Available at our Online store.

Contact: pan@laspilitas.com

Container Size	Quantity In Production	Quantity For Purchase	Unit-Price
One Gallon	1	0	\$ 12.99

Available at our Santa Margarita store.

Contact: bawilson@laspilitas.com

Hours: Open Saturday only from 9am to 4pm

Address: 3232 Las Pilitas Rd. Santa Margarita, CA 93453

Container Size	Quantity In Production	Quantity For Purchase	Unit-Price
One Gallon	1	0	\$ 12.99
Five Gallon	0	2	\$ 29.99
Fifteen Gallon	0	1	\$ 79.99

Available at our Escondido store.

Contact: escondido@laspilitas.com

Hours: Open Tuesday through Saturday from 9am to 4pm

Address: 8331 Nelson Way Escondido, CA 92026

Container Size	Quantity In Production	Quantity For Purchase	Unit-Price
One Gallon	0	11	\$ 12.99
Five Gallon	3	0	\$ 29.99
Fifteen Gallon	0	0	\$ 79.99

Fremontodendron Pacific Sunset Flannel Bush is great for a bird garden.
Fremontodendron Pacific Sunset Flannel Bush's foliage type is evergreen.
Fremontodendron Pacific Sunset Flannel Bush's flower color is yellow.

Communities

Communities for Fremontodendron Pacific Sunset Flannel Bush: Closed-cone Pine Forest, Coastal Sage Scrub, Joshua Tree Woodland and Yellow Pine Forest.

Ranges for Fremontodendron Pacific Sunset

ph: 6.50 to 7.50

usda: 7 to 10

height[m]: 3.00 to 6.00

width[m]: 3.00 to 6.00

rainfall[cm]: 50.00 to 100.00

What does all this mean!?!



San Marcos GROWERS

[NEW USER?](#)

 wholesale login

 password
[home](#)
[products](#)
[purchase](#)
[gardens](#)
[about us](#)
[resources](#)
[contact](#)

Web Site Search

Plant Database



Search by Plant Name

General Plant Info



Search for any word

Advanced Search >>

Search by size, origins, color, cultural needs, etc.

Site Map

Retail Locator

Plant Listings

[PLANT TYPE](#)
[PLANT GEOGRAPHY](#)
[PLANT INDEX](#)
[ALL PLANT LIST](#)
[PLANT IMAGE INDEX](#)
[PLANT INTROS](#)
[SPECIALTY CROPS](#)
[NEW 2011 PLANTS](#)
[PRIME LIST>](#)
[for OCTOBER](#)

GO
NATIVE

GO
SUCCULENT

Weather Station

Plant Database Search Results > Galvezia speciosa 'Bocarosa'

Galvezia speciosa 'Bocarosa' - Island Snapdragon



[2nd Image]

Habit and Cultural Information

Category: Shrub
 Family: Scrophulariaceae (Figworts)
 Origin: California (U.S.A.)
 Evergreen: Yes
 Flower Color: Red
 Bloomtime: Summer/Fall
 Height: 3-4 feet
 Width: 4-5 feet
 Exposure: Sun or Shade
 Seaside: Yes
 Drought Tolerant: Yes
 Irrigation ([H2O Info](#)): Low Water Needs
 Winter Hardiness: 20-25° F

Galvezia speciosa 'Bocarosa' (Island Snapdragon) - This California native sub shrub forms a dense mound with arching stems reaching to 4 feet tall or taller if provided with support. In the late winter through early fall it produces tubular 1 inch long bright red flowers which are flared at the lip, resembling small snapdragon flowers, with the weight of the flowers at the tips weighing down the long slender branches. Plant in full sun to moderate shade in well-drained soil. It is drought tolerant, especially if planted in shade, and hardy to about 20-25 degrees F. This tough plant is very adaptable and can hedged or even pruned annually to its crown at ground level in late winter to keep the foliage fresh and the size down. The species is native to rocky canyons and bluffs in coastal sage scrub below 3,000 feet on San Clemente and Santa Catalina island in the Santa Barbara Channel Islands with a disjunct population on Guadalupe Island off of Baja California. It is included in the CNPS Inventory of Rare and Endangered Plants on list 1B.2 (rare, threatened, or endangered in CA and elsewhere). There are two cultivars generally available in the horticultural trade; 'Firecracker', introduced by Tree of Life Nursery in 1986, is a compact plant with hairy leaves and flower calyces and 'Bocarosa', selected by the Saratoga Horticultural Foundation in 1980, has glabrous bright green leaves and is particularly floriferous. The cultivar name translates from Spanish meaning "red lips". The name for the genus honors José Gálvez (1720's-1787), a Spanish administrator. There are 5 species in the genus with 2 (*G. speciosa* and *G. juncea*) found in the California floristic province and the others in South America or the Galapagos Islands. This description is based on our research of *Galvezia speciosa* 'Bocarosa' and our observations of it growing in the nursery, in our own garden and in other gardens. We would appreciate getting feedback from anyone who has any additional information about this plant, even if they disagree with what we have written.

[MORE INFO]



Stella De Oro Dwarf Daylily

Hemerocallis x 'Stella de Oro'



Sensational, award-winning selection that blooms with heavy clusters of 2-1/2 in. yellow blooms. Reblooms freely into early fall. This easy to care for plant forms neat, compact clumps. Herbaceous.

Care Information

Follow a regular watering schedule during the first growing season to establish a deep, extensive root system. For a neat appearance, remove old foliage before new leaves emerge. Divide clumps every 2 to 3 years in early spring.

Design Ideas

This carefree perennial fits into almost any garden. Spot into perennial borders as individuals or small clusters. Mass into a sea of color that functions much like groundcover. You can arrange them in a row against foundations as a mini hedge. With its strap-leaved form and flowers on long wand-like stems, Daylily offers dramatic relief between dwarf shrubs.

Botanical Pronunciation:	hem-er-o-KAL-is HIB-rid
Key feature:	Summer Flowering
Plant type:	Perennial
Deciduous/evergreen:	Herbaceous
Cold hardiness zones:	4 - 11
Light needs:	Partial to full sun
Sunset climate zones:	1 - 24
Water Needs:	Once established, needs only occasional watering.
Average landscape size:	Foliage to 1 ft. tall, flower stalks to 2 1/2 ft. tall.
Growth rate:	Moderate
Landscape uses:	Firescaping/Fire Wise, Seacoast Exposure, Very Wet Areas, Woodland Garden
Problem/solution:	Very Wet Areas
Flower color:	Yellow
Blooms:	Early summer
Foliage color:	Green
Item no.:	4011

This page located at <http://www.monrovia.com/plant-catalog/plants/2447/stella-de-oro-dwarf-daylily.php>



San Marcos GROWERS

[NEW USER?](#)

 wholesale login

 password
[home](#)
[products](#)
[purchase](#)
[gardens](#)
[about us](#)
[resources](#)
[contact](#)

Web Site Search

Plant Database



Search by Plant Name

General Plant Info



Search for any word

Advanced Search >>

Search by size, origins, color, cultural needs, etc.

Site Map

Retail Locator

Plant Listings

[PLANT TYPE](#)
[PLANT GEOGRAPHY](#)
[PLANT INDEX](#)
[ALL PLANT LIST](#)
[PLANT IMAGE INDEX](#)
[PLANT INTROS](#)
[SPECIALTY CROPS](#)
[NEW 2011 PLANTS](#)
[PRIME LIST>](#)
for OCTOBER

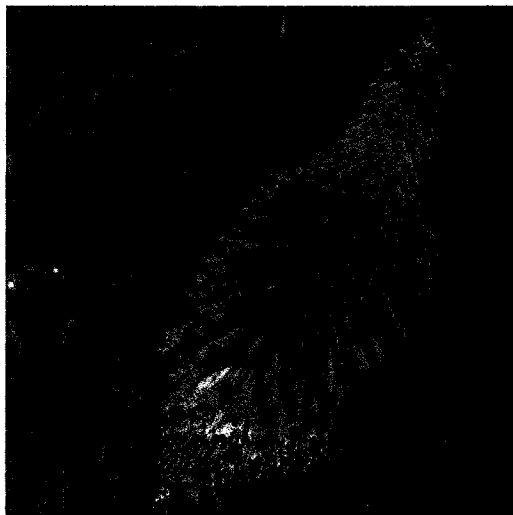
 GO
NATIVE

 GO
SUCCULENT

Weather Station

Plant Database Search Results > Kniphofia uvaria 'Wilhelm's Lance'

Kniphofia uvaria 'Wilhelm's Lance' - Giant Torch Lily



Habit and Cultural Information

Category: Perennial

Family: Asphodelaceae (~Liliaceae)

Origin: South Africa (Africa)

Evergreen: Yes

Flower Color: Yellow & Orange

Bloomtime: Spring/Summer

Height: 2-3 feet

Width: 3-4 feet

Exposure: Full Sun

Deer Tolerant: Yes

 Irrigation ([H2O Info](#)): Low Water Needs

Winter Hardiness: 0-10° F

Kniphofia uvaria 'Wilhelm's Lance' (Giant Torch Lily) - A giant among the Red Hot Pokers, from the nearly 3 feet all deep green foliage clumps, in spring rise the flowers atop stout stems to an amazing 6 to 8 feet tall. These flowers are in immense 10 inch long by 3 inch wide clusters of flowers that are vibrant orange in bud and open from the bottom up to pure golden yellow. This plant was a selection made by Randy Baldwin from a seed crop of Kniphofia "Pfitzer's Hybrids" grown by San Marcos Growers in 1982. The plant was planted in Randy's Puente Drive garden then moved to the San Marcos Growers nursery garden in 1987. The name 'Wilhelm's Lance' was chosen to both indicate the stature of the plant and commemorate Wilhelm Pfitzer, the patriarch of the Pfitzer Nursery in Stuttgart, Germany where the seed for this amazing plant originated. Plant in well drained soils and give some supplemental irrigation in summer to encourage flower formation. Hardy to below 15 ° F (to around 0° F if it is mulched or the foliage is retained to protect the growth crown). The name Kniphofia honors Johann Hieronymus Kniphof (1704 -1763), a German physician and botanist. The pronunciation of this genus is often argued about and while most continue to use the easiest to pronounce versions such as ny-FOE-fee-ah or nee-FOF-ee-a, others argue correctly that the name should follow the pronunciation of the name it commemorates but even for this there are differences of opinion owing to different German regional dialects - one such pronunciation often noted as correct is nip-HOFF-ee-uh while another that is particularly hard to pronounce is k-nip-HOF-ia. Keeping it simple we still use ny-FOE-fee-ah. This description is based on our research of Kniphofia uvaria 'Wilhelm's Lance' and our observations of it growing in the nursery, in our own garden and in other gardens. We would appreciate getting feedback from anyone who has any additional information about this plant, even if they disagree with what we have written.



Tuscarora Crape Myrtle

Lagerstroemia indica x *fauriei* 'Tuscarora'



Deciduous large shrub or small tree with profuse crepe-like coral-pink flowers. Exquisite orange-red foliage color in the fall. Smooth, mottled, light cinnamon brown bark adds year-round interest. Use for accent, background, specimen or street tree.

Care Information

Follow a regular watering schedule during the first growing season to establish a deep, extensive root system. Feed with a general purpose fertilizer before new growth begins in spring. For a formal appearance, shear annually after flowering.

Key feature:	Summer Flowering
Plant type:	Tree
Deciduous/evergreen:	Deciduous
Cold hardiness zones:	6 - 9
Light needs:	Full sun
Sunset climate zones:	7 - 10, 12 - 14, 18 - 21
Water Needs:	Once established, needs only occasional watering.
Average landscape size:	Moderate growing to 15 ft. tall and wide.
Growth rate:	Moderate
Growth habit:	Round
Special features:	Attractive Bark, Fall Color, Waterwise
Landscape use:	Firescaping/Fire Wise
Flower color:	Pink
Blooms:	Summer
Foliage color:	Green
Item no.:	0903

This page located at <http://www.monrovia.com/plant-catalog/plants/256/tuscarora-crape-myrtle.php>



LEUCOPHYLLUM FRUTESCENS 'COMPACTA' COMPACT TEXAS RANGER

Although this is one of the oldest *Leucophyllum* selections, it is still a winner! Its dense, rounded form requires little or no pruning, and its mature size of 5 feet tall and wide is still small enough to warrant a space in most residential gardens. 'Compacta' has evergreen grey-silver foliage and produces oodles of dark pink flowers when the humidity rises in the summer and fall. It tolerates more water and heavier soils than other *Leucophyllum* selections. USDA Zone 8.



AT A GLANCE SUMMARY	
SIZE (H X W)	5 feet x 5 feet
FLOWER COLOR	Dark pink
FLOWER SEASON	Summer - Fall
EXPOSURE	Full sun
WATER	Low
GROWTH RATE	Moderate
HARDINESS	10° F, USDA Zone 8
PRUNING	Minimal



S
H
R
U
B