



## Palo Alto Sweetgum

*Liquidambar styraciflua 'Palo Alto'*



Maple-like leaves turn brilliant orange-red or bright red in autumn. Provides reliable fall color, even in warm winter areas. Narrow, pyramidal form adapts well to urban conditions. Deciduous.

### Care Information

Follow a regular watering schedule during the first growing season to establish a deep, extensive root system. Watering can be reduced after establishment. Feed with a general purpose fertilizer before new growth begins in spring. Pruning time: winter.

### Design Ideas

Plant a grove or single specimen of Palo Alto in your front or backyard for a guaranteed autumn show no matter how warm your climate. Almost columnar in form, this tree creates an ideal screen in narrow side yards. Use to separate multistory homes on narrow lots. Pretty as a pair flanking a driveway or garden gateway. Also make the perfect carefree accent for less interesting, drought-resistant trees. May help reduce wind problems during the growing season if planted in a tightly spaced windrow.

### Companion Plants

Plant this tree with evergreens from the drought-resistant or Mediterranean groups such as Marina Strawberry Tree (*Arbutus x 'Marina'*) or Sweet Bay (*Laurus nobilis*). Combine with reliable flowering specimens for a cottage garden using Royal Star Magnolia (*Magnolia stellata 'Royal Star'*) or Eastern Redbud (*Cercis canadensis*). It's a natural with the long flower clusters of Texas Purple Japanese Wisteria (*Wisteria floribunda 'Texas Purple'*), or the Purple-leaf Japanese Honeysuckle (*Lonicera japonica 'Purpurea'*).

### History

This colorful tree is native to much of the southern United States as well as many eastern states. It is classified from the Latin *liquidus* and the Arabic *ambar* to describe the resin, once of great commercial value harvested from the European species. This species was introduced from America to Europe sometime in the 17th century, and since then over twenty varieties have been developed.

### Lore

This colorful tree is native to much of the southern United States as well as many eastern states. It is classified from the Latin *liquidus* and the Arabic *ambar* to describe the resin, once of great commercial value harvested from the European species. T

**Botanical Pronunciation:** lik-wid-AM-bar sti-ra-se-FLOO-a

**Key feature:** Fall Color

**Plant type:** Tree

**Deciduous/evergreen:** Deciduous

**Cold hardiness zones:** 6 - 9

**Light needs:** Full sun

**Water Needs:** Needs regular watering - weekly, or more often in extreme heat.

**Average landscape size:** Moderate grower to 40 ft. or more in height, 15 to 20 ft. wide.

**Growth rate:** Moderate

**Growth habit:** Pyramidal

**Special features:** Attracts Birds, Dramatic Foliage Color, Fall Color, North American Native, Year-round Interest

**Landscape uses:** Firescaping/Fire Wise, Very Wet Areas, Windbreak

**Problem/solution:** Very Wet Areas

**Flower color:** Yellow

**Blooms:** Inconspicuous

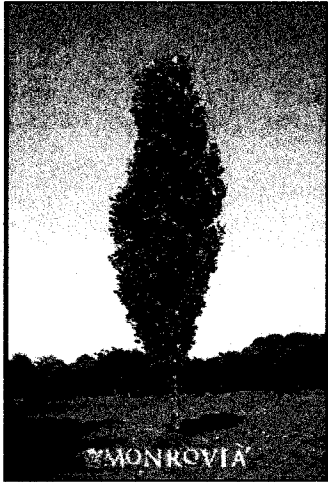
**Foliage color:** Green

**Item no.:** 5870



## Arnold Tulip Tree

*Liriodendron tulipifera* 'Arnold'



This upright grower is well suited for narrow spaces, though its stately size is best suited for larger properties. Unusual yellow-green, tulip-like flowers appear in late spring through summer. Foliage has pretty golden yellow color in fall.

### Care Information

Follow a regular watering schedule during the first growing season to establish a deep, extensive root system. Watering can be reduced after establishment. Feed with a general purpose fertilizer before new growth begins in spring.

<b>Key feature:</b>	Low Maintenance
<b>Plant type:</b>	Tree
<b>Deciduous/evergreen:</b>	Deciduous
<b>Cold hardiness zones:</b>	5 - 9
<b>Light needs:</b>	Full sun
<b>Water Needs:</b>	Once established, needs only occasional watering.
<b>Average landscape size:</b>	Fastigate, upright grower to 25 ft. tall, 8 to 10 ft. wide, ultimately to 50 ft. tall.
<b>Growth rate:</b>	Fast
<b>Growth habit:</b>	Columnar
<b>Flower attribute:</b>	Showy Flowers
<b>Flower color:</b>	Green
<b>Blooms:</b>	Late Spring to Early Summer
<b>Foliage color:</b>	Green
<b>Item no.:</b>	3680

This page located at <http://www.monrovia.com/plant-catalog/plants/2364/arnold-tulip-tree.php>

## *Lyonothamnus floribundus ssp. asplenifolius*

### Identification

**Genus:** Lyonothamnus **Species:** floribundus **Variety:** ssp. asplenifolius **Cultivar:** None  
**Common name:** Catalinia Ironwood.



### Description

A fast 50' evergreen tree. Its flowers are white with yellow centers and appear spring-summer. Native to Ca. Islands. Its conifer shape looks like a redwood until you look close. It needs good drainage and water to bring its rainfall to above 15". It's hardy to about 20-22 degrees, with no burn, ours has recovered from 6-8 but it froze to the trunk. It is possible it is tolerant to lower temperatures if the plant was a little older. The one that survived the 6-8 was only 8' tall. A fine tree for large lawn or patio, very ornamental and woodsy looking. Protect from the deer for the first 5 years. It can handle the second zone on the seashore. this is the area where the wind doesn't take the wave spray onto the plants. This area may be as far back as 1/2 mile if the waves are high and the wind bad.

### Characteristics

Lyonothamnus floribundus ssp. asplenifolius Catalinia Ironwood tolerates sand and clay.

Lyonothamnus floribundus ssp. asplenifolius Catalinia Ironwood's foliage type is evergreen.  
 Lyonothamnus floribundus ssp. asplenifolius Catalinia Ironwood's flower color is white.

### Communities

Communities for Lyonothamnus floribundus ssp. asplenifolius Catalinia Ironwood: Chaparral and Coastal Sage Scrub.

### Ranges for Lyonothamnus floribundus ssp. asplenifolius

**ph:** 5.00 to 8.00

**usda:** 8 to 10

**height[m]:** 6.00 to 17.00

**width[m]:** 5.00 to 8.00

**rainfall[cm]:** 36.00 to 100.00

What does all this mean!?!

### Available at our Online store.

**Contact:** pan@laspilitas.com

Container Size	Quantity In Production	Quantity For Purchase	Unit-Price
One Gallon	0	0	\$ 8.99

### Available at our Santa Margarita store.

**Contact:** bawilson@laspilitas.com

**Hours:** Open Saturday only from 9am to 4pm

**Address:** 3232 Las Pilitas Rd. Santa Margarita, CA 93453

Container Size	Quantity In Production	Quantity For Purchase	Unit-Price
One Gallon	0	0	\$ 8.99
Five Gallon	0	0	\$ 24.99
Fifteen Gallon	0	0	\$ 80.00

### Available at our Escondido store.

**Contact:** escondido@laspilitas.com

**Hours:** Open Tuesday through Saturday from 9am to 4pm

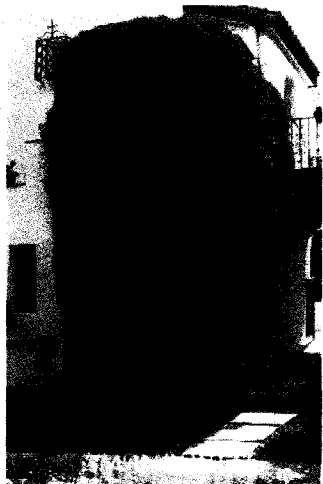
**Address:** 8331 Nelson Way Escondido, CA 92026

Container Size	Quantity In Production	Quantity For Purchase	Unit-Price
One Gallon	0	0	\$ 8.99
Five Gallon	0	0	\$ 24.99
Fifteen Gallon	0	0	\$ 80.00



## Yellow Trumpet Vine

*Macfadyena unguis-cati*



Vigorously climbing vine clings to any surface! Bright yellow trumpet-shaped flowers add quite a show. Thrives in heat. Use to cover any sunny wall, fence, even trees! Semi-evergreen.

### Care Information

Follow a regular watering schedule during the first growing season to establish a deep, extensive root system. Feed with a general purpose fertilizer. Provide support such as a trellis or arbor. Prune annually to control size. Pruning time: summer after flowering.

### Design Ideas

This lovely tropical appearing vine is much hardier than expected. One of the few trumpet-flowered vines that self clings, its little suction cups are easy on masonry. Plant it out of the wind but in full sun to cloak a wall in golden yellow. Stunning when trained up buff-colored classical columns or pilasters. Let it wind its way through very large-dimensioned latticework, or send up on the roof, where it blooms with vigor in warm climates. Perhaps the best vine for sculpting over windows and doorways in warmer climates.

### Companion Plants

To create a frost-tolerant semitropical garden, combine this Trumpet Vine with fragrant plants such as Star Jasmine (*Trachelospermum jasminoides*), First Love™ Gardenia (*Gardenia jasminoides* 'Aimee') and Variegated Winter Daphne (*Daphne odora* 'Aureo-marginata'). Lovely mixed with the lavender Little Grapette Miniature Daylily (*Hemerocallis* hybrids Little Grapette) and Mini Pearl Miniature Daylily (*Hemerocallis* hybrids Mini Pearl). Then, spot in Silvery Sunproof Lilyturf (*Liriope muscari* 'Silvery Sunproof') for foliage variation.

### History

This vine and its kin are mired in a complex, changing nomenclature within the family Bignonia. Alfred Rehder of the Arnold Arboretum listed the genus as *Doxantha* and later it was dropped altogether and given *Macfadyena* to include only four species. The vine is native to the American tropics from Mexico south to Argentina. The *unguis-cati* is from the Latin for cat's claw, referring to the shape of its climbing holdfasts.

### Lore

Trumpet vines of all kinds are exceedingly attractive to hummingbirds which can reach deep into the flowers for their nectaries.

**Botanical Pronunciation:** mak-fad-e-EN-ah un-gu-is-KAT-eye

**Key feature:** Waterwise

**Plant type:** Vine - Self-clinging

**Garden style:** Tropical

**Deciduous/evergreen:** Semi-evergreen

**Cold hardiness zones:** 9 - 11

**Light needs:** Full sun

**Sunset climate zones:** 8 - 24

**Water Needs:** Once established, needs only occasional watering.

**Average landscape size:** Fast grower, stems to 20 to 25 ft. long.

**Growth rate:** Fast

**Special features:** Attracts Butterflies, Attracts Hummingbirds, Waterwise

**Landscape uses:** Erosion Control, Espalier, Poolside, Seacoast Exposure

**Problem/solution:** Erosion Control

**Flower color:** Yellow

**Blooms:** Spring

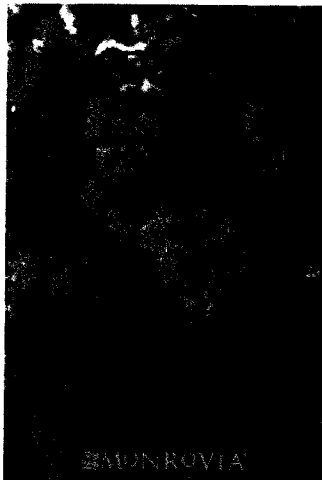
**Foliage color:** Green

**Item no.:** 5938



## Compact Oregon Grape Holly

*Mahonia aquifolium 'Compacta'*



Excellent evergreen shrub for massed plantings or a border. New growth has bronzy red coloring, turning to glossy, deep green. Purplish-red color in winter.

### Care information

Follow a regular watering schedule during the first growing season to establish a deep, extensive root system. Watering can be reduced after establishment. Feed with a general purpose fertilizer before new growth begins in spring. Pruning time: spring after flowering.

### Design ideas

This smaller version of Oregon Grape is more versatile as a shrub. Useful in smaller city gardens, where its dense evergreen foliage covers the exposed legs of taller plants. Use as a small hedge or edging material to cover the underpinnings of decks and steps. Plant near rocks or dry streambeds in wild gardens or add a clump to edge plants near water gardens for an interesting foliage variation. Ideal for unique form and texture in shaded condo or town-house patio gardens.

**Botanical Pronunciation:** ma-HOH-nee-a a-kwi-FOHji-um

**Key feature:** Year-round Interest

**Plant type:** Shrub

**Deciduous/evergreen:** Evergreen

**Cold hardiness zones:** 5 - 9

**Light needs:** Partial to full sun

**Sunset climate zones:** 2 - 12, 14 - 21, 31 - 41

**Water Needs:** Needs regular watering - weekly, or more often in extreme heat.

**Average landscape size:** Moderate grower to 2 to 3 ft. tall, 3 to 4 ft. wide.

**Growth rate:** Moderate

**Growth habit:** Compact

**Flower attribute:** Fragrant

**Special features:** Attracts Birds, Deer Resistant, Easy Care, Improved Pest and Disease Resistance, North American Native, Ornamental Berries, Year-round Interest

**Landscape uses:** Border, Container, Firescaping/Fire Wise, Hedge, Woodland Garden

**Problem/solution:** Deer Resistant

**Flower color:** Yellow

**Blooms:** Spring

**Foliage color:** Green

**Item no.:** 6075



## Boston Ivy

*Parthenocissus tricuspidata 'Veitchii'*



Popular clinging vine with purplish new growth, maturing to green before turning a brilliant dark red-purple in fall. Valued for quick cover of brick or stone walls, fences. Deciduous.

### Care Information

Follow a regular watering schedule during the first growing season to establish a deep, extensive root system. Feed with a general purpose fertilizer. Provide support such as a wall or fence. Prune annually to control size. Pruning time: winter.

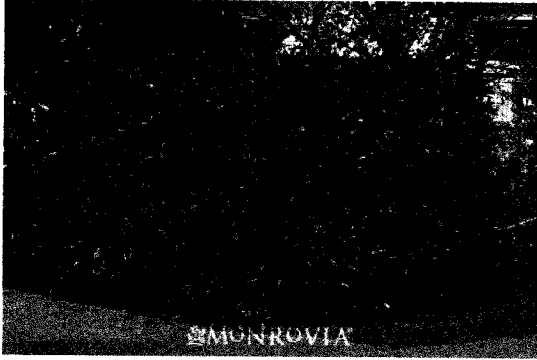
<b>Botanical Pronunciation:</b>	par-the-no-SIS-us tri-kus-pi-DAY-ta
<b>Key feature:</b>	Fall Color
<b>Plant types:</b>	Groundcover, Vine - Self-clinging
<b>Deciduous/evergreen:</b>	Deciduous
<b>Cold hardiness zones:</b>	4 - 9
<b>Light needs:</b>	Partial to full sun
<b>Water Needs:</b>	Needs regular watering - weekly, or more often in extreme heat.
<b>Average landscape size:</b>	Fast grower to 30 to 45 ft. long.
<b>Growth rate:</b>	Fast
<b>Special features:</b>	Attracts Birds, Fall Color
<b>Landscape uses:</b>	Erosion Control, Woodland Garden
<b>Problem/solution:</b>	Erosion Control
<b>Blooms:</b>	Inconspicuous
<b>Foliage color:</b>	Green
<b>Item no.:</b>	0250

This page located at <http://www.monrovia.com/plant-catalog/plants/91/boston-ivy.php>



## Fraser's Photinia

*Photinia x fraseri*



Excellent medium shrub for hedge or screens. New growth explodes in bright bronze-red in early spring, maturing to large, dark green leaves. Evergreen, can be used as espalier or as a patio tree.

### Care Information

Follow a regular watering schedule during the first growing season to establish a deep, extensive root system. Feed with a general purpose fertilizer before new growth begins in spring. For a tidy, neat appearance, shear annually to shape. Pruning time: winter.

### Design Ideas

This shrub is the backbone of landscapes in mild winter regions. Beauty and dense growth combine to produce the perfect tall hedge, whether grown natural or sheared. They are grown in side yards, down property lines or spaced out into a natural landscape for spring foliage contrast. Easily trained into a neat small tree, offering an evergreen lollipop for entries, front yards or even near the street.

### History

This very common shrub that is often classified as a pure species, *P. fraseri*, but it is in fact a hybrid. Its most dominant parent is likely *P. serratifolia*, which is native to China where it is known as "Red For A Thousand Years" which is evidenced by *P. x. fraseri*'s bright, scarlet red new growth, its

most outstanding characteristic. The Chinese plant was first introduced into Britain in 1804 by Captain Kirkpatrick of the Dutch East India Company. The genus *Photinia* is classified in the Rosaceae family and English horticulturist John Lindley, 1799-1865, named it from the Greek for shining to describe its glossy foliage. Lindley also dubbed the species after a contemporary plant hunter, John Fraser, 1750-1811, who is best known for introducing many new species from North America into Britain.

**Botanical Pronunciation:** foh-TIN-i-a x FRAY-zer-eye

**Key feature:** Hedge Plant

**Plant type:** Shrub

**Deciduous/evergreen:** Evergreen

**Cold hardiness zones:** 7 - 9

**Light needs:** Full sun

**Water Needs:** Needs regular watering - weekly, or more often in extreme heat

**Average landscape size:** Moderate to fast grower to 8 to 12 ft. high, 8 to 10 ft. wide.

**Growth rate:** Moderate

**Special feature:** Dramatic Foliage Color

**Landscape uses:** Border, Container, Espalier, Firescaping/Fire Wise, Privacy Screen, Specimen, Topiary, Windbreak

**Flower color:** White

**Blooms:** Spring

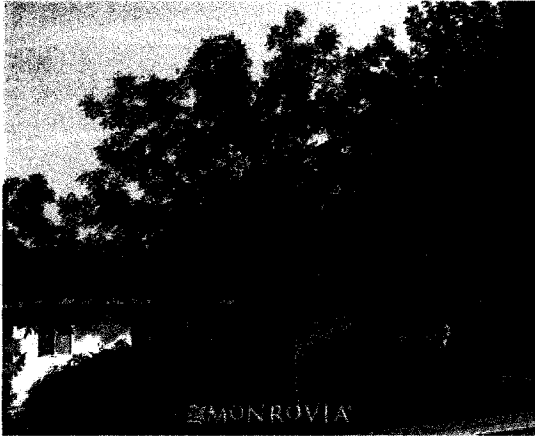
**Foliage color:** Green

**Item no.:** 6485



## Chinese Pistachio

*Pistacia chinensis*



Desirable ornamental tree with attractive umbrella-like crown that turns a brilliant crimson in fall. Dependable tree for street or lawn, patio or garden corner planting. Pest resistant. Deciduous.

### Care Information

Follow a regular watering schedule during the first growing season to establish a deep, extensive root system. Watering can be reduced after establishment. Feed with a general purpose fertilizer before new growth begins in spring. Pruning time: winter.

### Design Ideas

No other tree produces such a vibrant, broad range of fall color in warmer winter climates. It may be used dozens of ways as a shade tree, street tree, accent or front-yard specimen. Ideal for flanking driveways or use a pair to meet overhead at street side. Give this colorful drought-resistant tree a solid evergreen background to provide high-intensity contrast for seasonal changes.

### Companion Plants

This great tree grows well with all the warmer climate evergreens, such as Carob Tree (*Ceratonia siliqua*), Camphor Tree (*Cinnamomum camphora*), Willow-leaved Peppermint (*Eucalyptus nicholii*) and California Pepper Tree (*Schinus molle*). A natural with big bright-flowering shrubs like Turner's Tickled Pink™ Oleander (*Nerium oleander* 'Turner's Tickled Pink') and Noell Grevillea (*Grevillea x 'Noell'*).

### History

This is not the pistache of commerce but an ornamental tree native to China where it is little used except in the traditional pharmacopoeia. The genus was classified by Linnaeus who named it from the ancient Persian name for its nuts, pista. There are about nine evergreen and deciduous species but only two are cultivated, *P. vera* as a nut crop and *P. chinensis*. The latter was classified by Alexander von Bunge, 1803-1890, a Russian physician and botanist. Plants did not reach the west until Frank L. Meyer, working in Asia for the U.S. Department of Agriculture introduced it in 1921. This species is often used as a rootstock onto which *P. vera* is grafted. They are dioecious with males preferred as female plants produce litter of hard seeds.

### Lore

This species is often used as a rootstock onto which *P. vera* is grafted. They are dioecious with males preferred as female plants produce litter of hard seeds.

**Botanical Pronunciation:** pis-TAY-shi-a chi-NEN-sis

**Key feature:** Fall Color

**Plant type:** Tree

**Garden style:** Mediterranean

**Deciduous/evergreen:** Deciduous

**Cold hardiness zones:** 6 - 9

**Light needs:** Full sun

**Sunset climate zones:** 4 - 16, 18 - 23, 26, 28 - 33

**Water Needs:** Once established, needs only occasional watering.

**Average landscape size:** Moderate grower to 30 to 35 ft. tall, 25 to 35 ft. wide.

**Growth rate:** Moderate

**Growth habit:** Spreading

**Flower attribute:** Fragrant

**Special features:** Deer Resistant, Dramatic Foliage Color, Easy Care, Fall Color, Showy Fruit, Waterwise, Year-round Interest

**Landscape uses:** Firescaping/Fire Wise, Seacoast Exposure

**Problem/solution:** Deer Resistant

**Flower color:** Green

**Blooms:** Inconspicuous

**Foliage color:** Green

**Item no.:** 6570

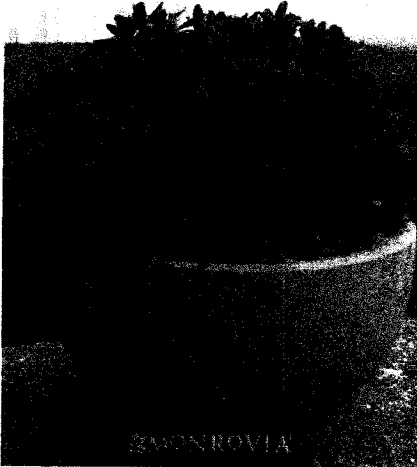
This page located at <http://www.monrovia.com/plant-catalog/plants/1985/chinese-pistachio.php>





## Wheeler's Dwarf Japanese Mock Orange

*Pittosporum tobira* 'Wheeler's Dwarf'



Miniature rounded shrub perfect as a low border, groundcover or container specimen. Prized for its dense, compact growth and glossy evergreen foliage. Produces small orange-blossom scented flowers occasionally. Requires little maintenance.

### Care Information

Follow a regular watering schedule during the first growing season to establish a deep, extensive root system. Feed with a general purpose fertilizer before new growth begins in spring. For a tidy, neat appearance, shear annually to shape. Pruning time: winter.

### Design Ideas

In milder climates this is one of the most useful low-growing shrubs available. Plant it as a single specimen or in small groups. Short stature makes an ideal foundation planting under windows. With its spreading, dense foliage, it is also a great groundcover or filler beneath tree canopies, or between taller shrubs. Rich green color gives vibrancy to tropical plantings or Asian schemes. Use in a formal garden as edging or short hedges clipped into rigid forms. Also great in planter islands inside circular driveways where it will tolerate the reflected heat.

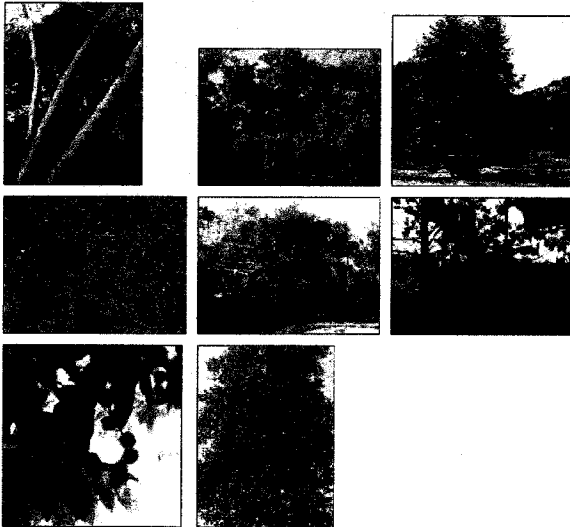
<b>Botanical Pronunciation:</b>	pit-o-SPOH-rum to-BY-ra
<b>Key feature:</b>	Easy Care Plant
<b>Plant type:</b>	Shrub
<b>Deciduous/evergreen:</b>	Evergreen
<b>Cold hardiness zones:</b>	8 - 11
<b>Light needs:</b>	Partial to full sun
<b>Sunset climate zones:</b>	8 - 24
<b>Water Needs:</b>	Needs regular watering - weekly, or more often in extreme heat
<b>Average landscape size:</b>	Moderate grower to 2 to 3 ft. tall, 4 to 5 ft. wide.
<b>Growth rate:</b>	Moderate
<b>Growth habit:</b>	Compact
<b>Flower attributes:</b>	Fragrant, Showy Flowers
<b>Special features:</b>	Dwarf Plant, Easy Care
<b>Landscape uses:</b>	Border, Container, Firescaping/Fire Wise, Hedge, Seacoast Exposure, Woodland Garden
<b>Flower color:</b>	White
<b>Blooms:</b>	Spring
<b>Foliage color:</b>	Green
<b>Item no.:</b>	6600

This page located at <http://www.monrovia.com/plant-catalog/plants/2454/wheelers-dwarf-japanese-mock-orange.php>

## Platanus racemosa

### Identification

**Genus:** Platanus **Species:** racemosa **Variety:** None  
**Cultivar:** None  
**Common name:** California sycamore.



### Description

A fast 75' deciduous tree. It will grow to 15-20 ft. in 5-10 years. It is along creeks in the foothills and coast ranges of Calif.. It takes wind, heat, but not drought tolerant until established. (Then it will be drought tolerant only where there is a high water table or along the coast.) It likes sun and moderate water. Chips of bark from trunk and roots can be boiled for coffee. Plant at 15 deg. angle for sweep, or pull over with cables to encourage spreading habit, 'multi' means more than one stem from the base. 'Wild' habit can be achieved by planting 3, 3-5' apart and leaning out. This is a very important wildlife plant. Hummingbirds and butterflies use extensively. It is a food plant for the Western Tiger Swallowtail. It has some fall color. The white bark with the chips of brown spotted here and there make for an attractive formal trunk. Probably allelopathic.(Rice) Notice there is not much under a lot of sycamores in the wild? We use wood chips to mulch.The green tree in the picture is 6 years old in the nursery(30-40 ft.,the little post under it is a 4 ft. hitching post), the yellow tree is the fall color.

### Characteristics

Platanus racemosa California sycamore tolerates sand, clay and seasonal flooding.  
 Platanus racemosa California sycamore is great for a bird garden and a butterfly garden.  
 Platanus racemosa California sycamore's foliage turns a different color in the fall, type is deciduous and is edible.  
 Platanus racemosa California sycamore's flower color is na.

### Communities

#### Available at our Online store.

**Contact:** pan@laspilitas.com

Container Size	Quantity In Production	Quantity For Purchase	Unit-Price
One Gallon	17	0	\$ 7.99

#### Available at our Santa Margarita store.

**Contact:** bawilson@laspilitas.com

**Hours:** Open Saturday only from 9am to 4pm

**Address:** 3232 Las Pilitas Rd. Santa Margarita, CA 93453

Container Size	Quantity In Production	Quantity For Purchase	Unit-Price
One Gallon	17	0	\$ 7.99
Five Gallon	0	11	\$ 24.99
Fifteen Gallon	0	-8	\$ 79.98

#### Available at our Escondido store.

**Contact:** escondido@laspilitas.com

**Hours:** Open Tuesday through Saturday from 9am to 4pm

**Address:** 8331 Nelson Way Escondido, CA 92026

Container Size	Quantity In Production	Quantity For Purchase	Unit-Price
One Gallon	0	38	\$ 7.99
Five Gallon	20	16	\$ 24.99
Fifteen Gallon	0	7	\$ 79.98

Communities for Platanus racemosa California sycamore: Chaparral, Coastal Sage Scrub, Mixed-evergreen Forest, Northern Oak Woodland, Riparian (rivers & creeks), Shadscale Scrub, Southern Oak Woodland and Central Oak Woodland.

**Ranges for Platanus racemosa**

---

**ph:** 5.00 to 8.00

**usda:** 6 to 10

**height[m]:** 10.00 to 25.00

**width[m]:** 8.00 to 15.00

**rainfall[cm]:** 137.00 to 241.00

What does all this mean!?!



## Kasan Pyracantha

*Pyracantha coccinea 'Kasan'*



Beautiful evergreen shrub producing an abundance of orange-red berries in the fall. Terrific source of fall through winter color. Use as barrier hedge or train as espalier.

### Care Information

Follow a regular watering schedule during the first growing season to establish a deep, extensive root system. Feed with a general purpose fertilizer before new growth begins in spring. For a tidy, neat appearance, shear annually to shape.

### Design Ideas

This is an excellent shrub to espalier against a wall, where its fall and winter berries can be fully displayed. The tall, spiny shrub also works well as an informal intruder-resistant barrier hedge.

### Companion Plants

Nearly Wild Rose (Floribunda) (*Rosa* x 'Nearly Wild') provides summer color with pink blooms while the pyracantha is covered in white flower clusters, and later the rose's orange hips reflect the orange-red berries. Other warm-weather shrubs that provide summer color include Lord Baltimore Rose Mallow (*Hibiscus* x 'Lord Baltimore') with crimson blossoms. Companion perennials such as Fern Leaf Yarrow (*Achillea* x 'Moonshine') can be planted at the base of the trunk.

### History

This large group of shrubs are in the Rose family and closely related to both hawthorn and cotoneaster. The genus was classified by Max Roemer of Germany in the mid 19th Century, who named it from the Greek for fire and thorn to describe red fruits and spiny branches. He also named this species for its coloring which is native to a large range in Southern Europe and Asia Minor. Its similarity to these other genera led it to be classified formerly in each. Edouard Spach, 1801-1879 of Strassbourg deemed it *Cotoneaster pyracantha*, and it was *Crataegus pyracantha* per Borkh. This is among the newer disease resistant cultivars.

### Lore

Pyracantha is a highly valued berry producer for Christmas decor in warm climate regions.

**Botanical Pronunciation:** py-ra-KAN-tha cok-SIN-i-a

**Key feature:** Ornamental Berries

**Plant type:** Shrub

**Deciduous/evergreen:** Evergreen

**Cold hardiness zones:** 5 - 9

**Light needs:** Full sun

**Water Needs:** Once established, needs only occasional watering.

**Average landscape size:** Fast grower to 8 to 10 ft. tall, 6 to 8 ft. wide.

**Growth rate:** Fast

**Flower attribute:** Flowers for Cutting

**Special features:** Attracts Birds, Ornamental Berries, Waterwise, Year-round Interest

**Landscape uses:** Espalier, Firescaping/Fire Wise, Mass Planting, Privacy Screen, Seacoast Exposure, Windbreak

**Flower color:** White

**Blooms:** Spring flowers, winter berries

**Foliage color:** Green

**Item no.:** 6780

This page located at <http://www.monrovia.com/plant-catalog/plants/2025/kasan-pyracantha.php>



## Eleanor Taber™ Indian Hawthorn

*Raphiolepis indica* 'Conor' P.P# 9398



Produces profuse clusters of pink flowers. Young leaf-spot resistant foliage is often bright reddish-orange, maturing deep green. Blue-black berries accompany deep maroon winter foliage. Excellent groundcover, hedge, accent or foundation shrub.

### Care Information

Follow a regular watering schedule during the first growing season to establish a deep, extensive root system. Feed with a general purpose fertilizer before new growth begins in spring. For a formal appearance, shear annually after flowering.

<b>Key feature:</b>	Spring Flowering
<b>Plant type:</b>	Shrub
<b>Patent Act:</b>	Asexual reproduction of plants protected by the Plant Patent Act is prohibited during the life of the patent.
<b>Deciduous/evergreen:</b>	Evergreen
<b>Cold hardiness zones:</b>	7 - 10
<b>Light needs:</b>	Partial to full sun
<b>Sunset climate zones:</b>	8 - 10, 12 - 24
<b>Water Needs:</b>	Once established, needs only occasional watering.
<b>Average landscape size:</b>	Moderate growing to 4 ft. tall, 3 ft. wide.
<b>Growth rate:</b>	Moderate
<b>Growth habit:</b>	Round
<b>Landscape use:</b>	Seacoast Exposure
<b>Flower color:</b>	Pink
<b>Blooms:</b>	Mid-winter through spring, again in fall
<b>Foliage color:</b>	Green
<b>Item no.:</b>	6494

This page located at <http://www.monrovia.com/plant-catalog/plants/1967/eleanor-taber-indian-hawthorn.php>

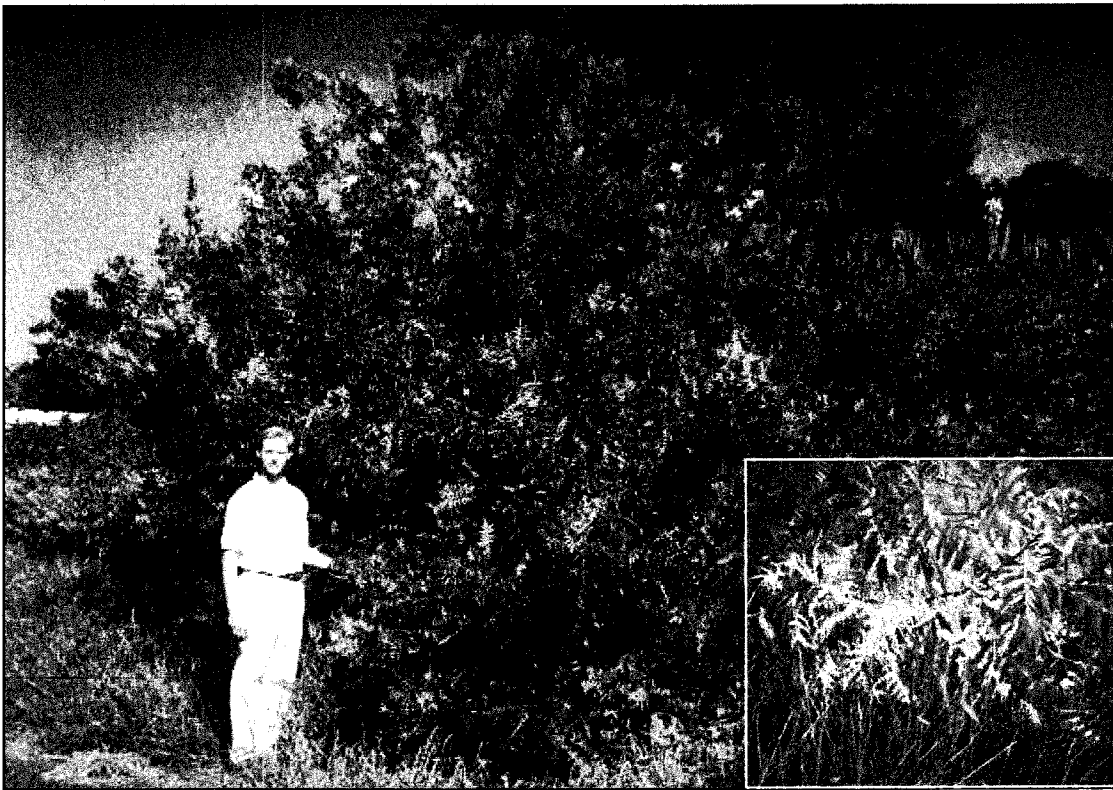


## RHUS LANCEOLATA FLAME LEAF SUMAC

Native to most of the Southwest, this deciduous shrub or small tree has large, green, aromatic, compound leaves that turn a brilliant orange-red in the fall. Clusters of creamy white flowers are followed by hairy red-orange berries on female plants. Mature specimens are typically multi-trunked and short in stature but they may be trained into a single trunk standard. Natively it suckers to form wide spreading colonies. Plant in full sun to part shade and provide good drainage. Hardy to -20° F.

### AT A GLANCE SUMMARY

SIZE (H X W)	12-18 feet x 15-20
FLOWER COLOR	White
FLOWER SEASON	Spring
EXPOSURE	Full Sun to Part Shade
WATER	Low
GROWTH RATE	Fast
HARDINESS	-20° F, USDA Zone 5
PRUNING	To Shape



S  
H  
R  
U  
B

© Copyright by Mountain States Wholesale Nursery 2005  
Visit our web site at [www.mswn.com](http://www.mswn.com) for more information.



# San Marcos GROWERS

[NEW USER?](#)

 wholesale login
 

 password
 
[home](#)
[products](#)
[purchase](#)
[gardens](#)
[about us](#)
[resources](#)
[contact](#)

## Web Site Search

### Plant Database



Search by Plant Name

### General Plant Info



Search for any word

### Advanced Search >>

Search by size, origins, color, cultural needs, etc.

### Site Map

### Retail Locator

### Plant Listings

[PLANT TYPE](#)  
[PLANT GEOGRAPHY](#)  
[PLANT INDEX](#)  
[ALL PLANT LIST](#)  
[PLANT IMAGE INDEX](#)  
[PLANT INTROS](#)  
[SPECIALTY CROPS](#)  
[NEW 2011 PLANTS](#)  
[PRIME LIST>](#)  
 for OCTOBER

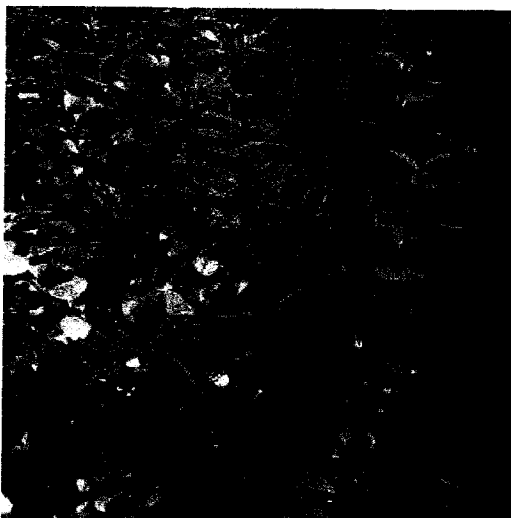
GO  
NATIVE

GO  
SUCCULENT

### Weather Station

## Plant Database Search Results > Ribes viburnifolium

### Ribes viburnifolium - Catalina Currant



[2nd Image]

### Habit and Cultural Information

Category: Shrub  
 Family: Grossulariaceae (Gooseberries or Currants)  
 Origin: Baja California (North America)  
 Evergreen: Yes  
 Flower Color: Rose Pink  
 Bloomtime: Spring  
 Height: 3-4 feet  
 Width: 4-6 feet  
 Exposure: Sun or Shade  
 Drought Tolerant: Yes  
 Irrigation ([H2O Info](#)): Low Water Needs  
 Winter Hardiness: 15-20° F

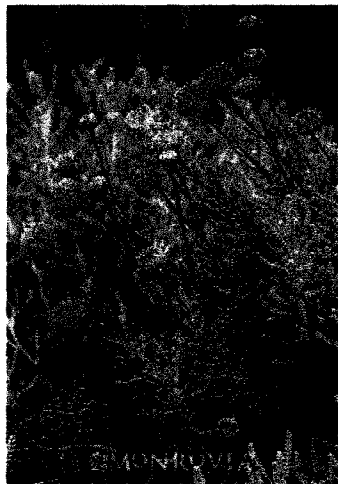
Ribes viburnifolium (Catalina Currant) - Catalina Currant or Viburnumleaf Currant as it is also known is an open wide spreading evergreen shrub that grows 3-4 feet tall and spreads to 6 feet. Dark red stems bearing aromatic leathery dark green leaves arch up and out from the center of the plant. foliage. Rose pink flowers bloom in late winter to mid spring. Plant in sun or light shade along coast to shade inland. Requiring little supplemental water, this native shrub is a good candidate for planting underneath an oak canopy. Drought tolerant. This description is based on our research of Ribes viburnifolium and our observations of it growing in the nursery, in our own garden and in other gardens. We would appreciate getting feedback from anyone who has any additional information about this plant, even if they disagree with what we have written.

[[MORE INFO](#)]



## Lavender Cotton

*Santolina chamaecyparissus*



Fragrant, dense mound with attractive grayish-silver foliage. Displays bright yellow flowers on stalks. Effective groundcover or edging for walks or borders. Good foreground for herb garden. Evergreen.

### Care Information

Follow a regular watering schedule during the first growing season to establish a deep, extensive root system. Feed with a general purpose fertilizer before new growth begins in spring. For a formal appearance, shear annually after flowering. Pruning time: late winter or early spring.

### Design Ideas

This makes a lovely edging for the herb garden or English-style border. Combine with the all green species into a checkerboard groundcover. A valuable source of solid gray foliage in Mediterranean style planting. It can be sheared for a more formal look, which will also keep the growth more dense.

### Companion Plants

Contrast the mounding silver-gray foliage of this Cotton with a vertical form, such as Heavenly Bamboo (*Nandina domestica*). Or, combine with the sword-like foliage of Bronze New Zealand Flax (*Phormium tenax* 'Atropurpureum Compactum'). For good color contrast, add the deep-purple foliage of Royal Purple Smoke Tree (*Cotinus coggygria* 'Royal Purple') to the planting.

### History

This drought resistant species is a native of the Mediterranean where aromatic foliage protects it from browsing wildlife. It came into cultivation early on as a natural pesticidal herb but later became popular in Tudor knot garden pattern making. Its name translates to holy flax, even though this relates to no aspect of its use.

### Lore

In France this plant was known as garde robe, because sprigs were used in closets and trunks to repel moths.

**Botanical Pronunciation:** san-tow-LEEN-ah kam-e-sip-ar-IS-us

**Key feature:** Fragrant

**Plant type:** Shrub

**Deciduous/evergreen:** Evergreen

**Cold hardiness zones:** 7 - 9

**Light needs:** Full sun

**Sunset climate zones:** 3 - 24, 27, 29, 30, 32 - 35, 39

**Water Needs:** Once established, needs only occasional watering.

**Average landscape size:** Moderate grower to 1½ ft. tall, 3 ft. wide.

**Growth rate:** Moderate

**Flower attribute:** Fragrant

**Landscape uses:** Firescaping/Fire Wise, Green Roof, Seacoast Exposure

**Flower color:** Yellow

**Blooms:** Summer

**Foliage color:** Gray-green

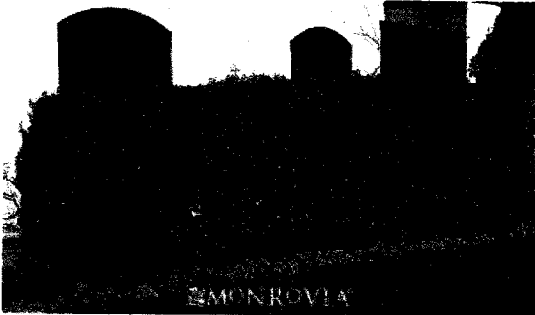
**Item no.:** 7040





## Shiny Xylosma

*Xylosma congestum*



Versatile hedge or screening plant displays bronzy young foliage on spreading, gracefully arching branches. Takes shearing well, easily trained as espalier. Tolerates heat. Evergreen.

### Care Information

Follow a regular watering schedule during the first growing season to establish a deep, extensive root system. Feed with a general purpose fertilizer before new growth begins in spring. For a tidy, neat appearance, shear annually to shape. Pruning time: spring.

### Design Ideas

Xylosma can be used as either a shrub or small tree in the landscape. Makes a fine natural hedge gently pruned to size or it will adapt to mild shearing for a more formal appearance. Allow it to grow naturally for a shiny light green background for beds and borders. Excellent for breaking up long fence lines or for de-emphasizing large multistory walls in foundation planting.

### Companion Plants

Evergreen xylosma belongs with bright warm climate bloomers such as Rainbow Knock Out Rose, (Rosa x 'Radcor'), Lavender Lady Passionflower, (Passiflora x 'Lavender Lady'), Patriot Rainbow

Compact Lantana, (*Lantana camara* 'Robpatrai') and Catawba Crepe Myrtle, (*Lagerstroemia indica* 'Catawba').

### History

This genus contains about one hundred species of evergreens found everywhere in the tropics and subtropics except Africa. The plant was discovered in China by Portuguese Jesuit missionary Juan Loureiro, 1715-1796 whose descriptions reached Dutch botanist Friedrich Miquel. However, the final classification was made by English botanists at Kew Gardens or via the London Horticultural Society.

### Lore

When in bloom, xylosmas draw bees in droves which makes this shrub vital in wildlife gardens and an undesirable plant near swimming pools.

**Botanical Pronunciation:** zi-LOS-ma kon-GES-tum

**Key feature:** Hedge Plant

**Plant type:** Shrub

**Garden style:** Contemporary

**Deciduous/evergreen:** Evergreen

**Cold hardiness zones:** 8 - 11

**Light needs:** Partial to full sun

**Water Needs:** Needs regular watering - weekly, or more often in extreme heat.

**Average landscape size:** Moderate grower to 10 to 12 ft. tall and wide.

**Growth rate:** Moderate

**Growth habit:** Spreading

**Special features:** Attracts Birds, Easy Care, Ornamental Berries, Waterwise, Year-round Interest

**Landscape uses:** Container, Espalier, Privacy Screen, Windbreak, Woodland Garden

**Blooms:** Inconspicuous

**Foliage color:** Green

**Item no.:** 7695

## PROPOSED PARK AMENITIES



Site Map| Rep Finder|

CALL 1-888-45



Home  
site frontpage



Products  
view our products



News Center  
view news updates



Media Galleries  
view photos & videos



How to Buy  
view purchase o

Products › Playground Amenities › Tables › 8' ADA Picnic Table - Inground

- Bike Racks
- Bleachers
- Drinking Fountains
- Fencing
- Grills
- Landscaping
- Litter Receptacles
- Signs
- Site Benches
- Surfacing
- Tables
- Site Accessories

Back To List



Move your mouse over image or click to enlarge

8' ADA Picnic Table - Inground

Product model : 1148

Price: \$920.00Age Range : 0 to 0

CAD file: 1148.dwg

PDF file: 1148.pdf

CPSC Compliant: No

ASTM Compliant: No

ADA Compliant: No

Ground Space: 5'-8" x 8' (1.7m x 2.4m)

Surface: PVC

0

Like Be the first of your friends to like tl

Parameters of Product: Playgrou

Age 0-0

Protective Area 0-250 sq. ft.

Ask a question about this product



Last Updated: Wednesday, 05 October 2011 20:16



Site Map | Rep Finder

CALL 1-888-4!



Home  
site frontpage



Products  
view our products



News Center  
view news updates



Media Galleries  
view photos & videos



How to Buy  
view purchase

Products › Playground Amenities › Tables › 6' Picnic Table - Inground

- Bike Racks
- Bleachers
- Drinking Fountains
- Fencing
- Grills
- Landscaping
- Litter Receptacles
- Signs
- Site Benches
- Surfacing
- Tables
- Site Accessories



Move your mouse over image or  
click to enlarge

Back To List

6' Picnic Table - Inground

Product model : 1116-2

Price: \$748.00 Age Range : 0 to 0

CPSC Compliant: No  
 ASTM Compliant: No  
 ADA Compliant: No  
 Ground Space: 5'-8" x 6' (1.7m x 1.8m)  
 Surface: PVC

0

Like Be the first of your friends to like

Parameters of Product: Playground A

Age	0-0	
Protective Area	0-250 sq. ft.	

Ask a question about this product





Site Map | Rep Finder

CALL 1-888-41



Home  
site homepage



Products  
view our products



News Center  
view news updates



Media Galleries  
view photos & videos



How to Buy  
view purchase

Products > Sports & Outdoor > Benches > 6' Bench - Inground

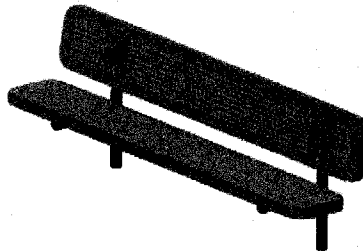
Backstop

Benches

Basketball

Game Equipment

Back To List



Move your mouse over image or  
click to enlarge

### 6' Bench - Inground

Product model : 1266

Price: \$466.00 Age Range : 0 to 0

CPSC Compliant: No

ASTM Compliant: No

ADA Compliant: No

Ground Space: 2' x 6' (.6m x 1.8m)

Surface: PVC

0

Like Be the first of your friends to like

Ask a question about this product



Last Updated: Wednesday, 05 October 2011 20:13



## Model 3380

Model 3380, barrier-free, pedestal drinking fountain with satin finish stainless steel bowl and green powder-coated galvanized steel pedestal, supplied by 100% lead-free waterways.

- 1
- 2
- 3
- 4
- 5

[Write a Review](#)

## Model 3380 Description

### Custom Colors Are Available With This Model

Complete the look of Model 3380 by adding custom Color options.

[View Custom Colors](#)

Haws pedestal drinking fountain 3380 uses a patented stainless steel push-button valve assembly (Pat.# 6,981,692) allowing for front access stream adjustment as well as cartridge and strainer access. The fashionable barrier-free design of the 3380 allows the circular pedestal to be placed securely in multiple locations without taking up excess space. Equipped with vandal resistant components, this fountain is not easily disrupted, quickly discouraging the worst of vandals.

- Heavy-duty 11 gauge fabricated galvanized steel with green powder-coated finish provides an exceptional corrosion resistance in one of our toughest made fountains
- 100% lead-free waterways
- Maintenance is made easy with front access to valve adjustment and cartridge replacement

Model meets all current Federal Regulations for the disabled including those in the Americans with Disabilities Act. Haws manufactures drinking fountains and electric water coolers to be lead-free by all known definitions

including NSF/ANSI Standard 61, Section 9, California Proposition 65, and the Federal Safe Drinking Water Act. Product is compliant to California Health and Safety Code 116875 (AB 1953-2006).

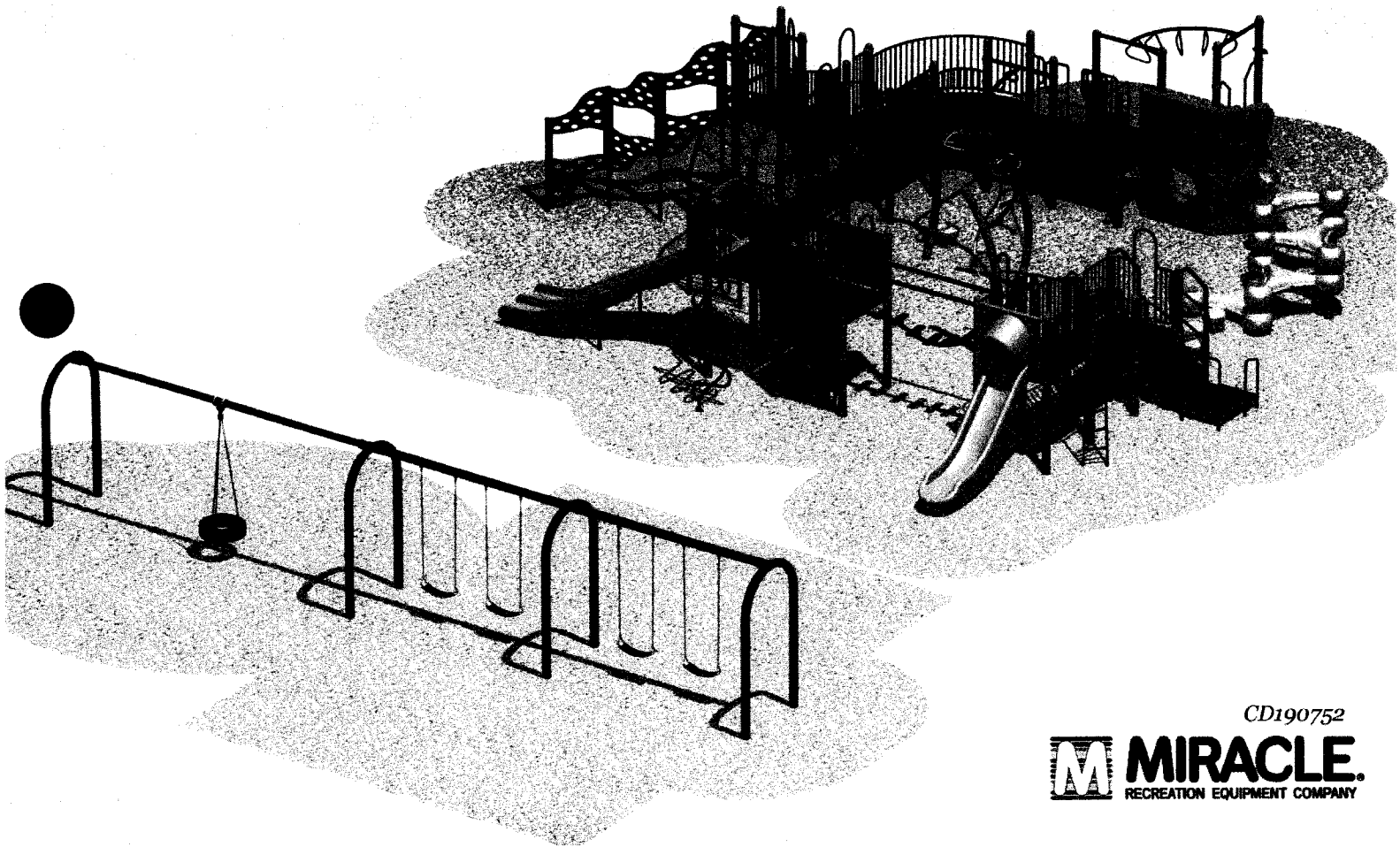
### **Buy America Act Information**

The vast majority of Haws products qualify under the terms of the act. However, since different purchases often require subtly different responses, Haws recommends that the specific document requesting certification be sent to customer service for a specific answer.

### **Industry Standards Compliant**



*Rancho Bella Vista Park  
Valley Wide Park District*



CD190752

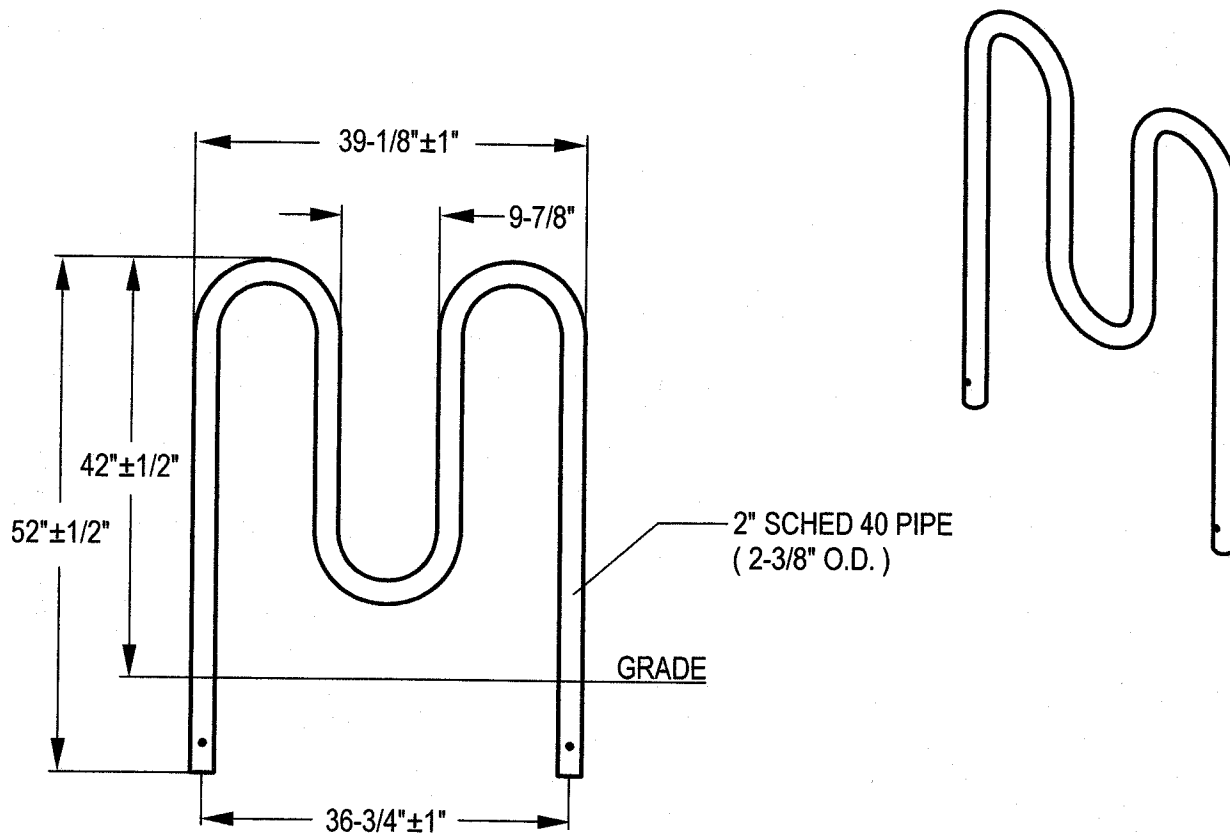
**M** **MIRACLE.**  
RECREATION EQUIPMENT COMPANY



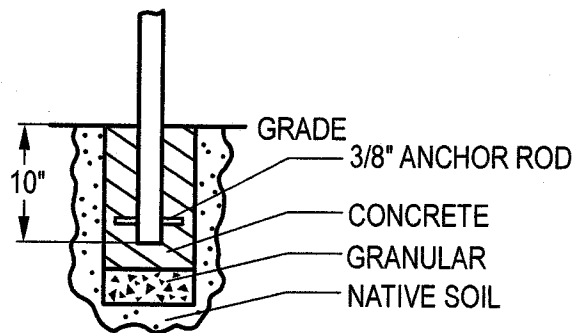
Model # HW238-5-IG-P

Dimension Sheet

HEAVY-DUTY WINDER | 3 LOOPS 5 BIKES



ELEVATION VIEW





Site Map | Rep Finder |

CALL 1-888-45



Home  
site frontpage



Products  
view our products



News Center  
view news updates



Media Galleries  
view photos & videos



How to Buy  
view purchase o

Products › Playground Amenities › Grills › Heavy-Duty Park Grill

- Bike Racks
- Bleachers
- Drinking Fountains
- Fencing
- Grills
- Landscaping
- Litter Receptacles
- Signs
- Site Benches
- Surfacing
- Tables
- Site Accessories

[Back To List](#)



Move your mouse over image or click to enlarge

### Heavy-Duty Park Grill

Product model : 1104-8

Price: \$568.00 Age Range : 5 to 12

CPSC Compliant: No  
 ASTM Compliant: No  
 ADA Compliant: No  
 Age Range: 5 to 12  
 Ground Space: 3'-8" x 3' (1.1m x .9m)

0

Like Be the first of your friends to like this

#### Parameters of Product: Playground An

Age	5-12	
Protective Area	0-250 sq. ft.	

Ask a question about this product



Last Updated: Wednesday, 05 October 2011 20:30



Site Map | Rep Finder

CALL 1-888-41



Home  
site frontpage



Products  
view our products



News Center  
view news updates



Media Galleries  
view photos & videos

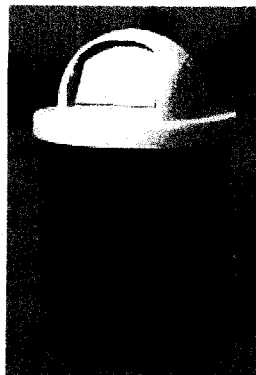


How to Buy  
view purchase

Products > Playground Amenities > Litter Receptacles > Litter Receptacle w/Dome Lid

- Bike Racks
- Bleachers
- Drinking Fountains
- Fencing
- Grills
- Landscaping
- Litter Receptacles
- Signs
- Site Benches
- Surfacing
- Tables
- Site Accessories

Back To List



Move your mouse over image or click to enlarge

Litter Receptacle w/Dome Lid

Product model : 1129

Price: \$644.00 Age Range : 0 to 0

CPSC Compliant: No  
 ASTM Compliant: No  
 ADA Compliant: No  
 Ground Space: 3' Diameter (.9m)

0

Like Be the first of your friends to like

Parameters of Product: Playground A

Age	0-0
Protective Area	0-250 sq. ft.

Ask a question about this product



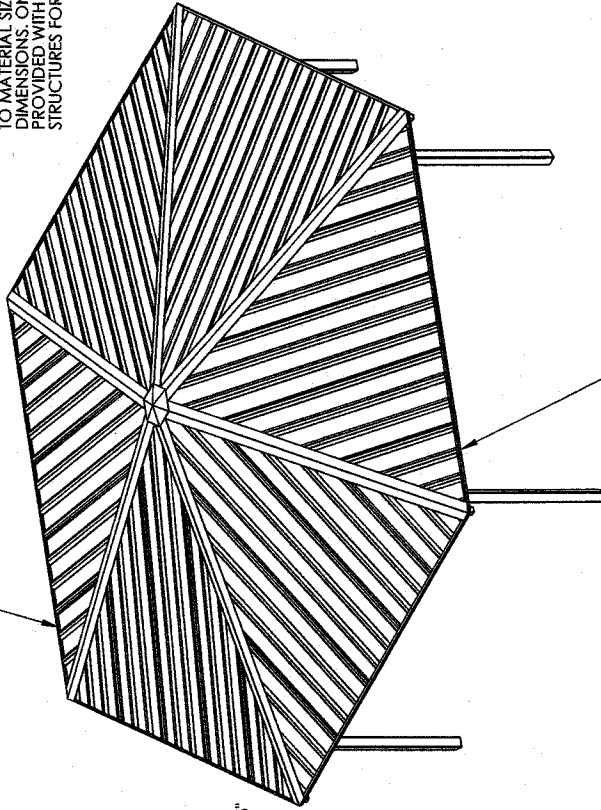
Last Updated: Wednesday, 05 October 2011 20:10

NOTE: THIS IS A

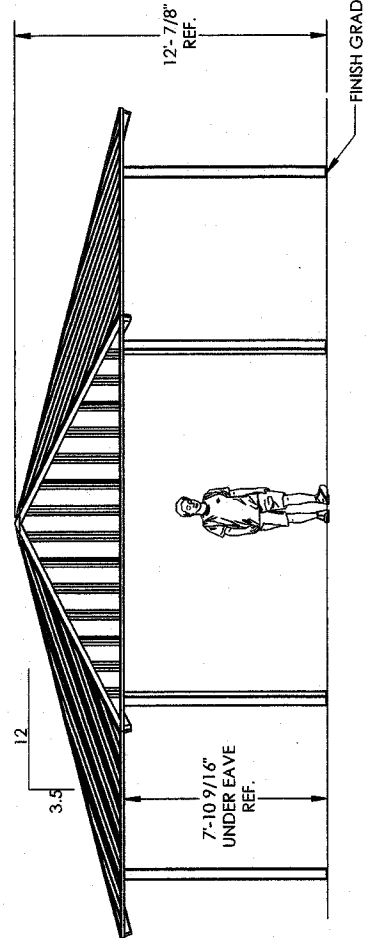
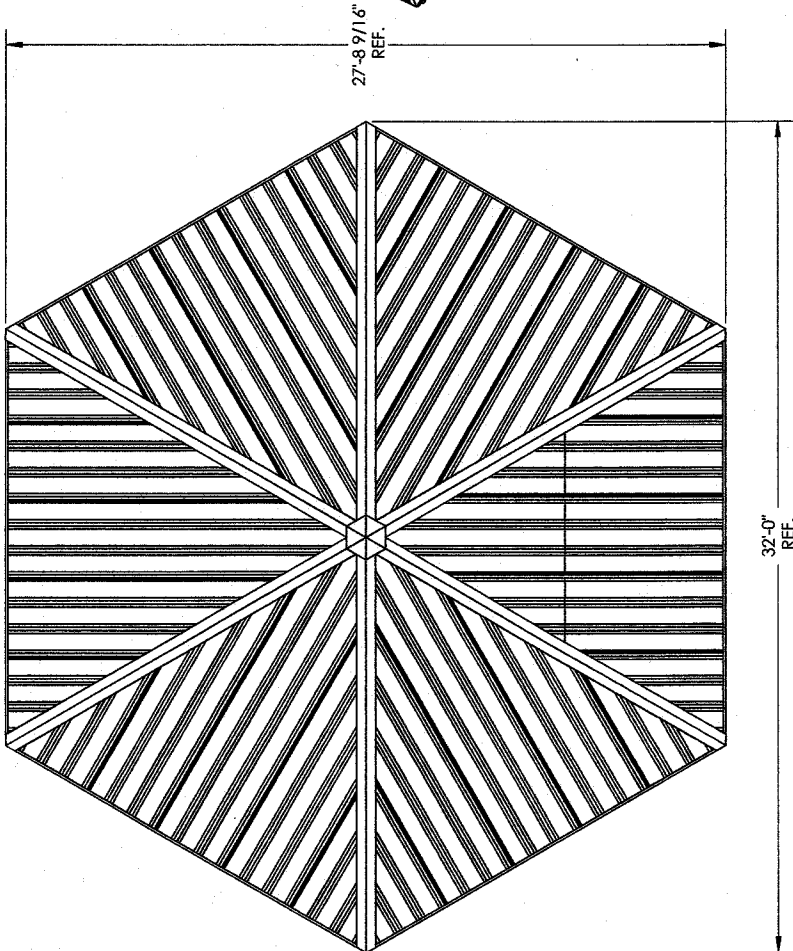
**PLANNING LEVEL DRAWING.**

THE STRUCTURE SHOWN IS SUBJECT TO ON-GOING DESIGN REVIEW AND UPDATE. EXPECT SOME CHANGES TO MATERIAL SIZES AND GENERAL DIMENSIONS. ONLY USE DRAWINGS PROVIDED WITH ENGINEERED STRUCTURES FOR CONSTRUCTION.

24 GA. GALVALUME COATED, KYNAR 500 PAINTED, STEEL ROOFING PANELS. SEE COLOR MATRIX FOR AVAILABLE COLORS.



ROOFING TRIM IS 24 GA. KYNAR 500 COATED STEEL. COLOR MATCHED TO ROOF. EAVE CHANNEL TRIM IS REINFORCED WITH 18 GA. GALVANIZED INNER CHANNEL FOR ADDITIONAL EAVE SUPPORT.



SHELTER MODEL:

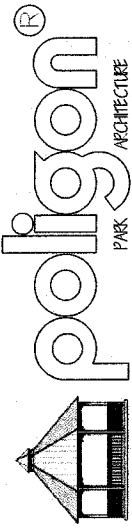
**HEXAGON 32**

**HXE-32**

SCALE: 1:56

REV LEVEL: A

DATE: 1/25/2011



Designs and calculations of Poligon buildings are protected under copyright laws and patents and may not be used without the calculation or design of a building that is not supplied by Poligon.

by **PORTERCORP**

PORTERCORP, 4240 N. 134th AVE. HOLLAND, MI 49424

SHEET

**ELEVATION VIEWS**

Copyright law protect the style and visual appearance of the structure while patents may protect other parts of the design.



- MAINTENANCE RESPONSIBILITIES:**
- VALLEY-WIDE PARKS AND RECREATION DEPART. AT 387,776 AF
  - HOME OWNERS ASSOCIATION 387,776 AF
  - HOME OWNER 387,776 AF
  - HOME OWNER 387,776 AF
- UNDEVELOPED LAND - CONTINGENCY:**  
 An part of the NCC, "Undeveloped" Open spaces area to be maintained by the Riverside Land Conservancy

**THIS SHEET IS AN OVERVIEW OF THE THIS EXHIBIT ONLY. REFER TO INDIVIDUAL SHEETS FOR ENLARGED VIEW**

**OVERALL PRELIMINARY LANDSCAPE MAINTENANCE PLAN**  
 TENTATIVE TRACT MAP NO.

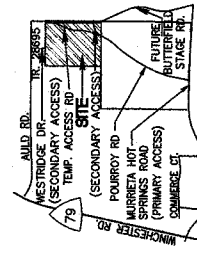
**36376**  
 AMENDMENT NO. 1

IN THE COUNTY OF RIVERSIDE, CALIFORNIA

1770 IOWA AVENUE - SUITE 100  
 95172-0707, CA 95207  
 (FAX) 951.732.0728



APRIL 4, 2012



NO SCALE



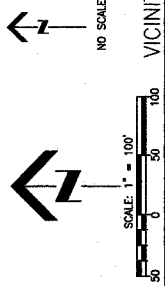
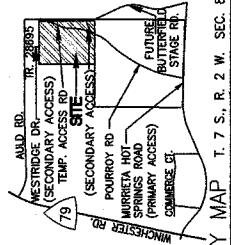
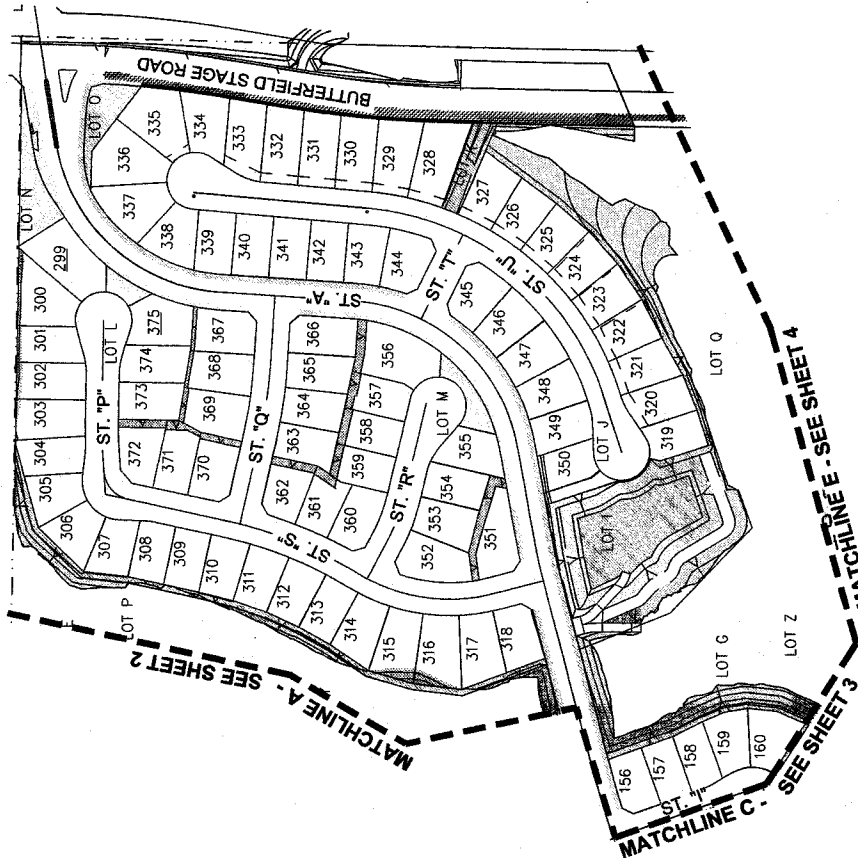
VICINITY MAP T. 7 S., R. 2 W. SEC. 8



PLANS PREPARED UNDER SUPERVISION OF:  
 JAMES C. WACKER, P.E. License No. 1012914  
 DATE

REVISIONS	DATE

- MAINTENANCE RESPONSIBILITIES:**
- VALLEY-WIDE PARKS AND RECREATION  
32,813 sf
  - HOME OWNERS ASSOCIATION  
307,786 sf
  - HOME OWNER  
2,708 sf
  - RIVERSIDE LAND CONSERVANCY  
The open space areas to be maintained by the Riverside Land Conservancy

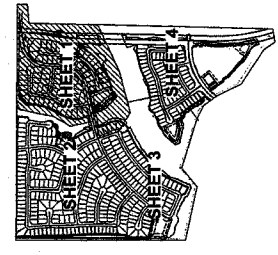


VICINITY MAP I. 7 S., R. 2 W., SEC. 8

**PRELIMINARY LANDSCAPE  
MAINTENANCE PLAN (1 of 4)**  
TENTATIVE TRACT MAP NO. **36376**  
AMENDMENT NO. 1

IN THE COUNTY OF RIVERSIDE, CALIFORNIA  
1770 IOWA AVENUE SUITE 100  
941 782 0700  
941 782 0725 (FAX)  
**RICK**  
ENGINEERING COMPANY

APRIL 4, 2012



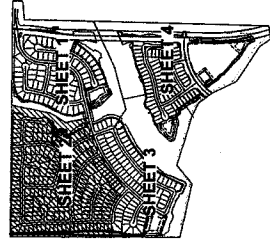
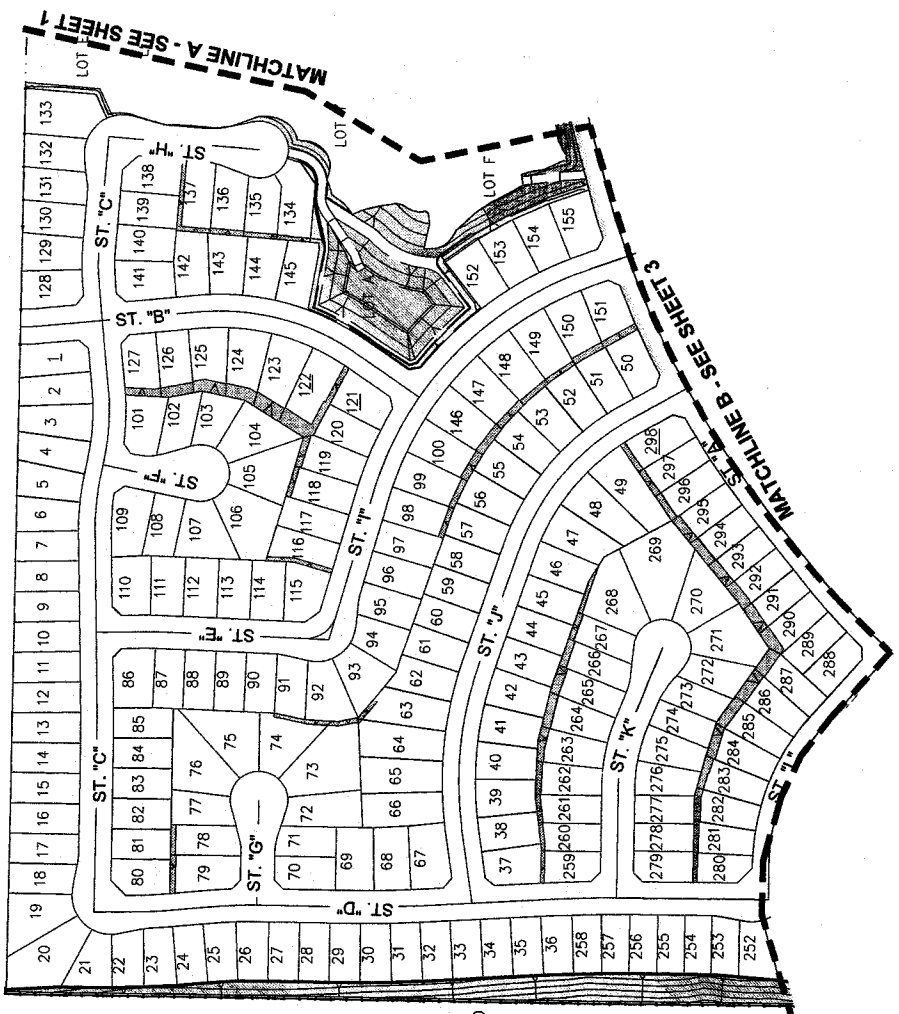
**SHEET KEY:**

DATE	BY	REVISIONS	NOT TO SCALE

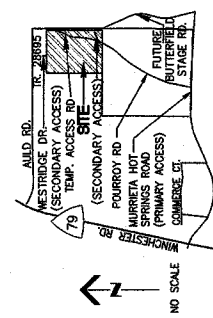


PLANS PREPARED UNDER SUPERVISION OF:  
JAMES C. MURKETA, P.E. #2201 EXP. 10/12/14  
DATE

**MAINTENANCE RESPONSIBILITY:**  
 VALLEY-WIDE PARKS AND RECREATION  
 332,613 sq ft  
 HOME OWNERS ASSOCIATION  
 307,780 sq ft  
 HOME OWNER  
 24,790 sq ft  
 RIVERSIDE LAND CONSERVANCY  
 177,000 sq ft  
 REVISIONS TO THIS PLAN SHALL BE  
 MAINTAINED BY THE RIVERSIDE LAND CONSERVANCY



**SHEET KEY:**  
 NOT TO SCALE



**PRELIMINARY LANDSCAPE  
 MAINTENANCE PLAN (2 of 4)**  
 TENTATIVE TRACT MAP NO.  
**36376**  
 AMENDMENT NO. 1

IN THE COUNTY OF RIVERSIDE, CALIFORNIA  
 1770 DOW AVENUE - SUITE 100  
 951 252 0000, CA 92507  
 (714) 961-1782, 0723  
**TRICK**  
 ENGINEERING COMPANY

APRIL 4, 2012

PLANS PREPARED UNDER SUPERVISION OF:  
 JAMES C. RULIKER, P.L.A. 02291 EXP. 03/2014

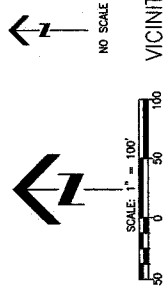
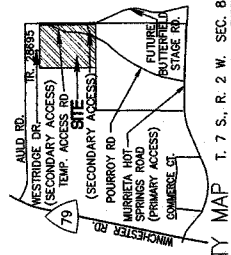
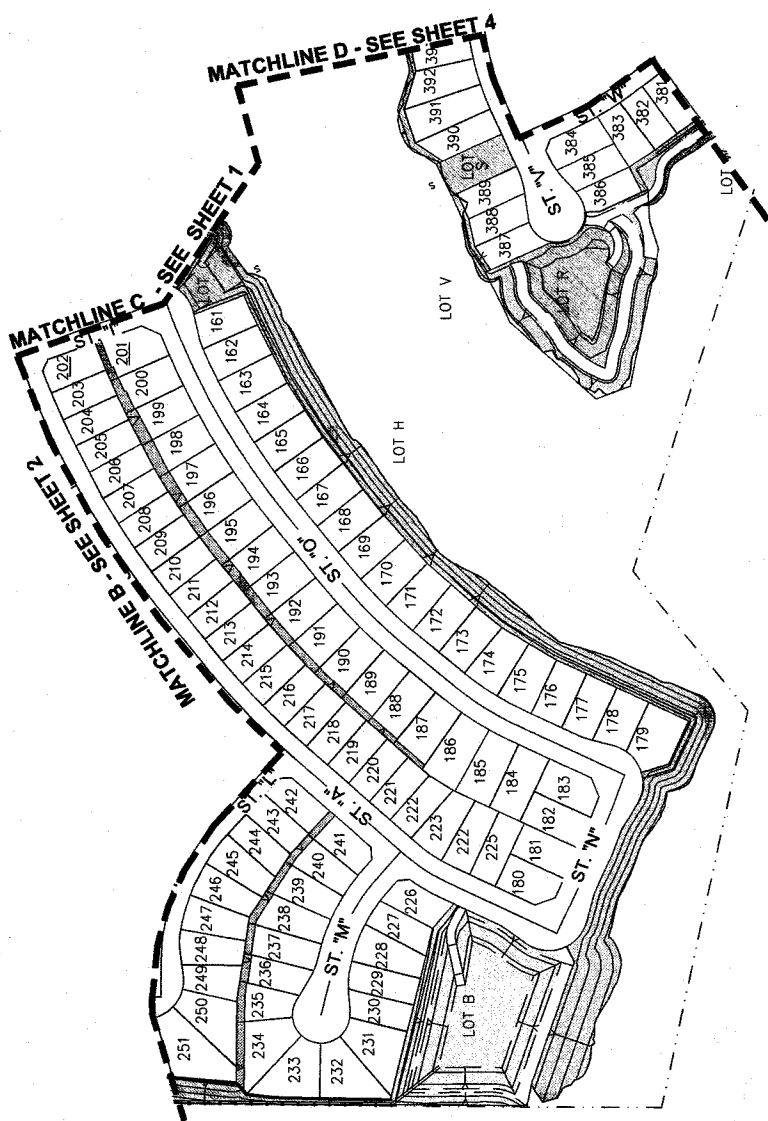


DATE	BY	REVISIONS

SCALE: 1" = 100'  
 50 0 50 100

VICINITY MAP T. 7 S., R. 2 W., SEC. 8

**MAINTENANCE GREENBELT:**  
 VALLEY-WIDE PARKS AND RECREATION  
 332,875 SF  
 HOME OWNERS ASSOCIATION  
 397,769 SF  
 HOME OWNER  
 8,179 SF  
 RIVERSIDE LAND CONSERVANCY  
 RIVERSIDE LAND CONSERVANCY open space area to be maintained by the Riverside Land Conservancy



**PRELIMINARY LANDSCAPE  
 MAINTENANCE PLAN (3 of 4)**  
 TENTATIVE TRACT MAP NO. **36376**  
 AMENDMENT NO. 1

IN THE COUNTY OF RIVERSIDE, CALIFORNIA  
 1770 DOWA AVENUE - SUITE 100  
 RICK  
 ENGINEERING COMPANY  
 951.782.0702  
 (FAX) 951.782.0723

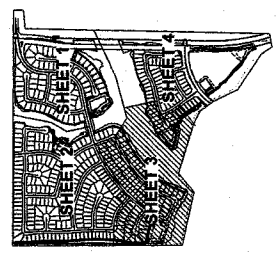
APRIL 4, 2012

PLANS PREPARED UNDER SUPERVISION OF:  
 JAMES C. KAHLEN, P.E. (2001) EPC 10102014 DATE



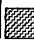



NOT TO SCALE

DATE	BY	REVISIONS



**SHEET KEY:**

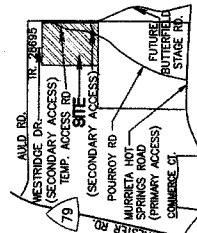
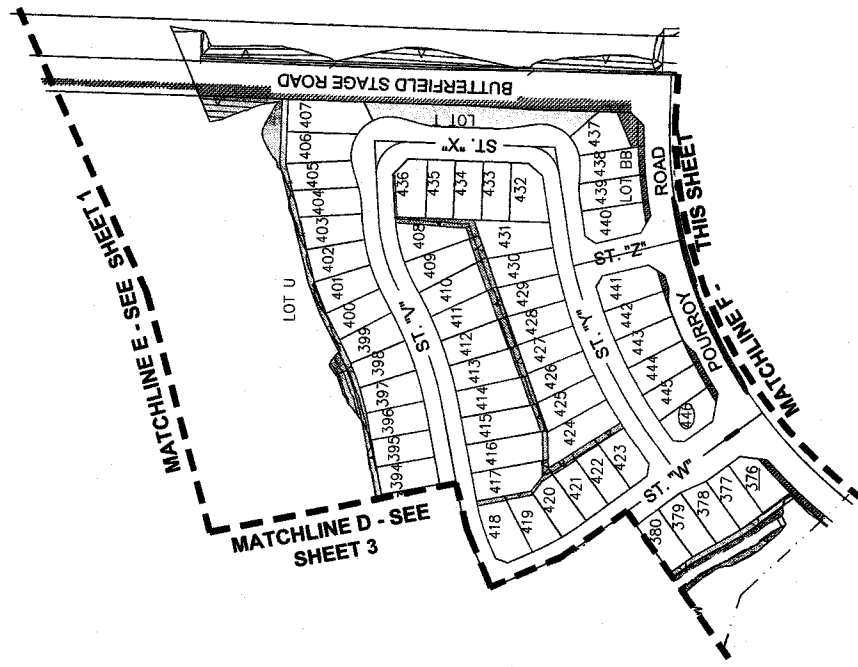


- MAINTENANCE DISCREETOR/LEADER:**
-  VALLEYVIEW PARKS AND RECREATION  
332,813 sf
  -  HOME OWNERS ASSOCIATION  
267,100 sf
  -  HOME OWNER  
52,799 sf
  -  RIVERSIDE LAND CONSERVANCY  
As part of the HCC, the same Creek open space area is to be administered by the Riverside Land Conservancy

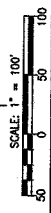
**PRELIMINARY LANDSCAPE  
MAINTENANCE PLAN (4 of 4)  
TENTATIVE TRACT MAP NO.  
36376  
AMENDMENT NO. 1**

IN THE COUNTY OF RIVERSIDE, CALIFORNIA  
1770 IOWA AVENUE - SUITE 100  
RIVERSIDE, CA 92507  
951.782.0707  
RICK ENGINEERING COMPANY (PA) 951.782.0725

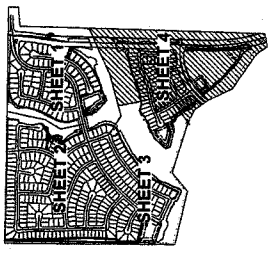
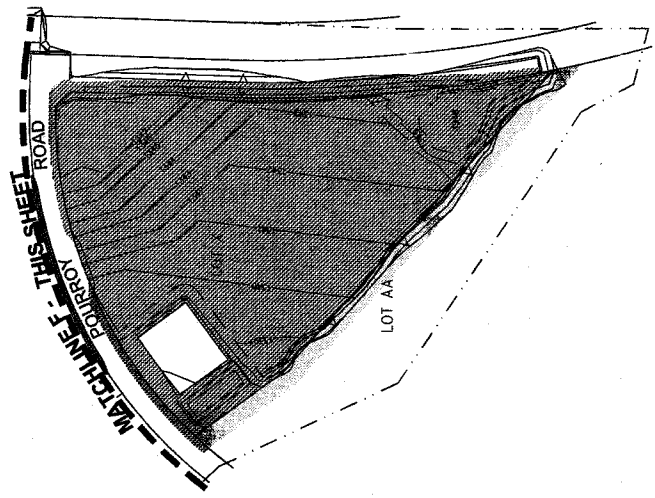
APRIL 4, 2012



NO SCALE



VICINITY MAP T. 7 S. R. 2 W. SEC. 8



**SHEET KEY:**

DATE	BY	REVISIONS

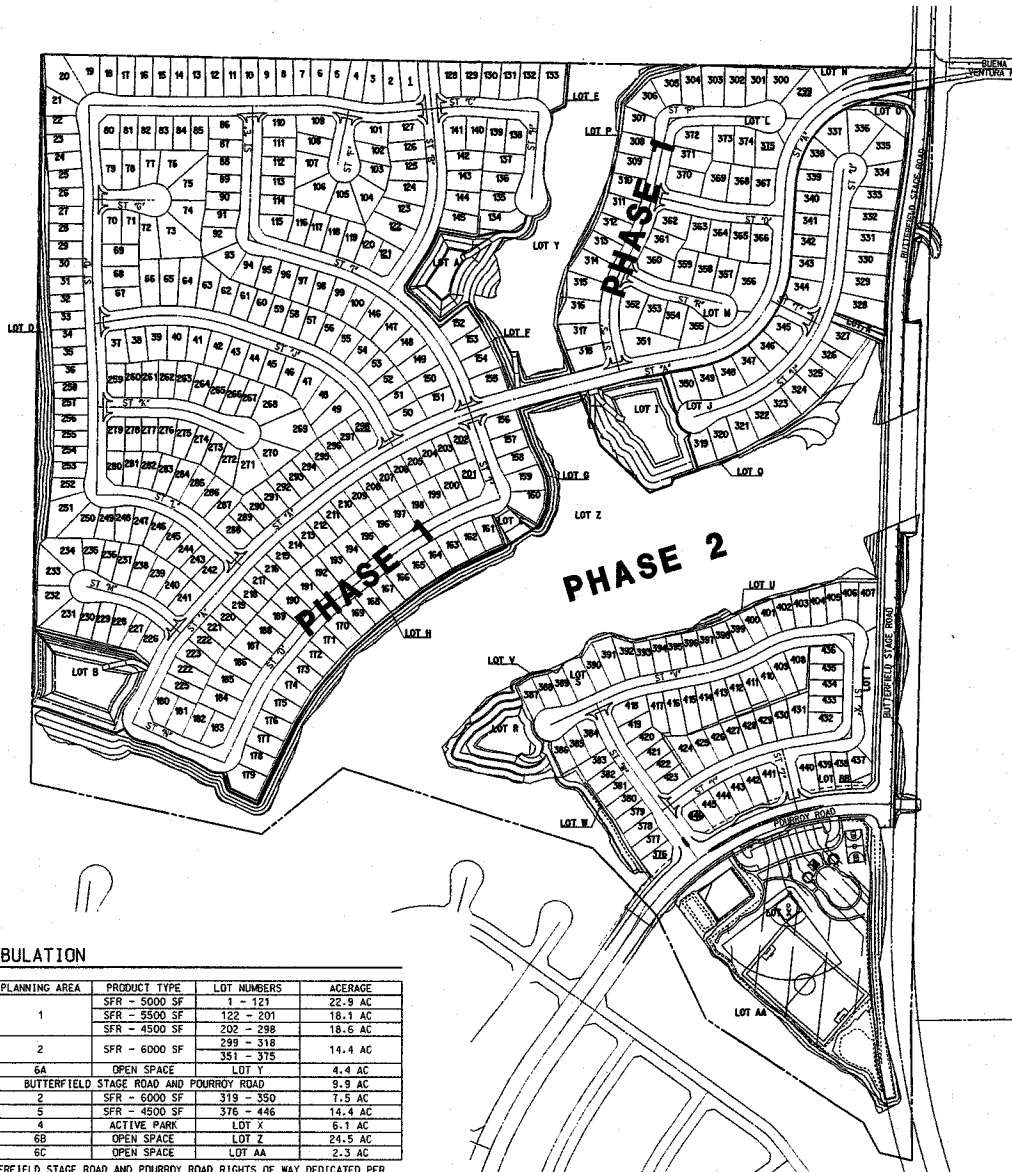


PLANS PREPARED UNDER SUPERVISION OF:  
JAMES C. KUHLSHIEN, P.E. #2021 EXP. 10/1/2024

DATE

# TENTATIVE TRACT 36376 PHASING MAP

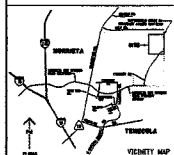
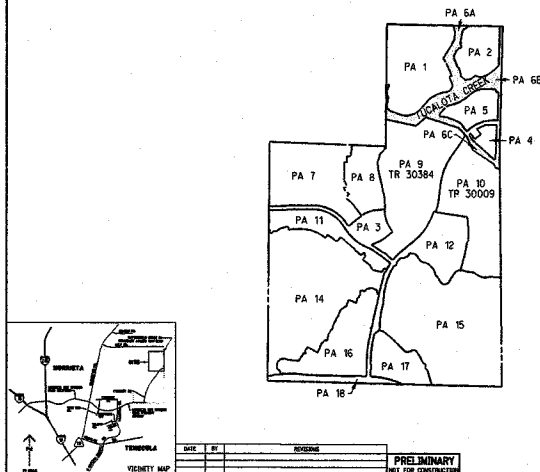
PREPARED: JANUARY 24, 2012



## LOT TABULATION

PHASE	PLANNING AREA	PRODUCT TYPE	LOT NUMBERS	ACERAGE
1	1	SFR - 5000 SF	1 - 121	22.9 AC
		SFR - 5500 SF	122 - 201	18.1 AC
		SFR - 4500 SF	202 - 298	18.6 AC
	2	SFR - 6000 SF	299 - 318	14.4 AC
		OPEN SPACE	LOT Y	4.4 AC
		BUTTERFIELD STAGE ROAD AND POURROY ROAD		9.9 AC
2	2	SFR - 6000 SF	319 - 350	7.5 AC
		SFR - 4500 SF	376 - 446	14.4 AC
	4	ACTIVE PARK	LOT X	6.1 AC
	6B	OPEN SPACE	LOT Z	24.5 AC
	6C	OPEN SPACE	LOT AA	2.3 AC

NOTE: BUTTERFIELD STAGE ROAD AND POURROY ROAD RIGHTS OF WAY DEDICATED PER PHASE 1, BUT CONSTRUCTION IS NOT REQUIRED UNTIL PHASE 2.



DATE: 01/24/12  
 REVISION: PRELIMINARY  
 NOT FOR CONSTRUCTION

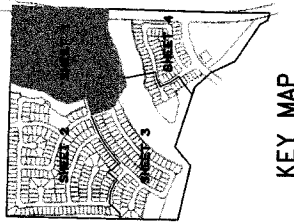
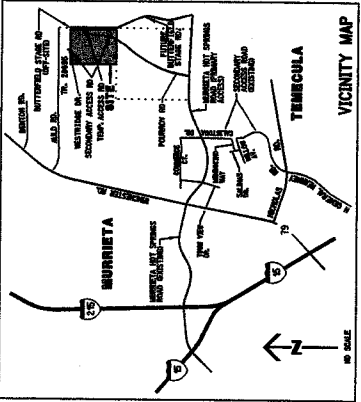
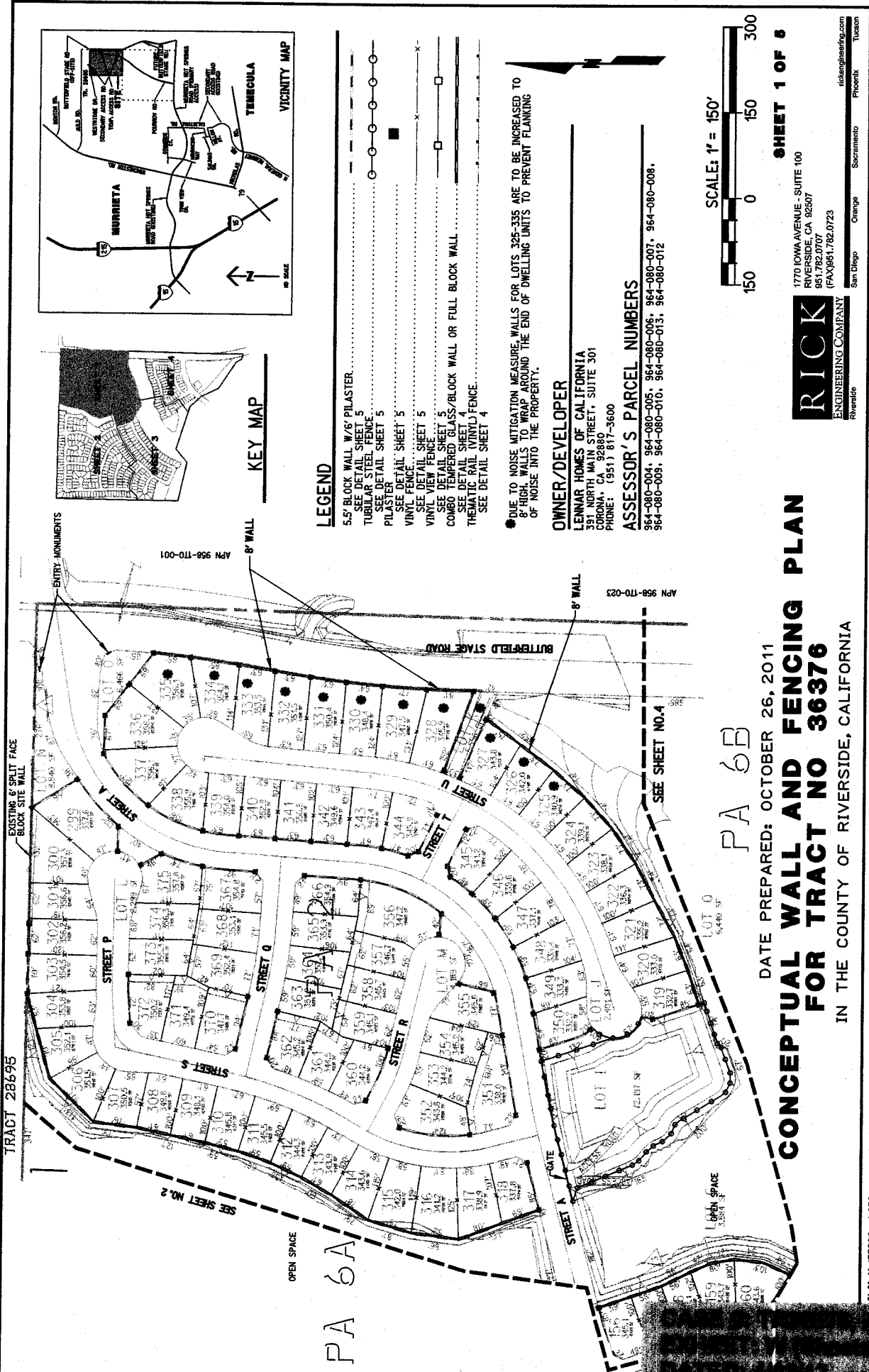
## 36376 PHASING MAP

FORMERLY TRACT 31804  
 IN THE COUNTY OF RIVERSIDE, CALIFORNIA

DATE PREPARED: JANUARY 12, 2012  
 TENTATIVE TRACT MAP NO.

SCALE: 1" = 100'

PLAT NO. 10-000000 10-000000



KEY MAP

**LEGEND**

- 5.5' BLOCK WALL W/ 6" PILASTER. SEE DETAIL SHEET 5
- TUBULAR STEEL FENCE. SEE DETAIL SHEET 5
- PILASTER. SEE DETAIL SHEET 5
- VINYL FENCE. SEE DETAIL SHEET 5
- VINYL VIEW FENCE. SEE DETAIL SHEET 5
- CONCRETE BLOCK WALL OR FULL BLOCK WALL. SEE DETAIL SHEET 5
- THEMATIC RAIL (VINYL) FENCE. SEE DETAIL SHEET 4

● DUE TO NOISE MITIGATION MEASURE, WALLS FOR LOTS 325-335 ARE TO BE INCREASED TO 8' HIGH. WALLS TO WRAP AROUND THE END OF DWELLING UNITS TO PREVENT FLANKING OF NOISE INTO THE PROPERTY.

**OWNER/DEVELOPER**

LENNAR HOMES OF CALIFORNIA  
 391 NORTH MAIN STREET, SUITE 301  
 CORONA, CA 92880  
 PHONE: (951) 817-3600

**ASSESSOR'S PARCEL NUMBERS**

964-080-004, 964-080-005, 964-080-006, 964-080-007, 964-080-008,  
 964-080-009, 964-080-010, 964-080-013, 964-080-012



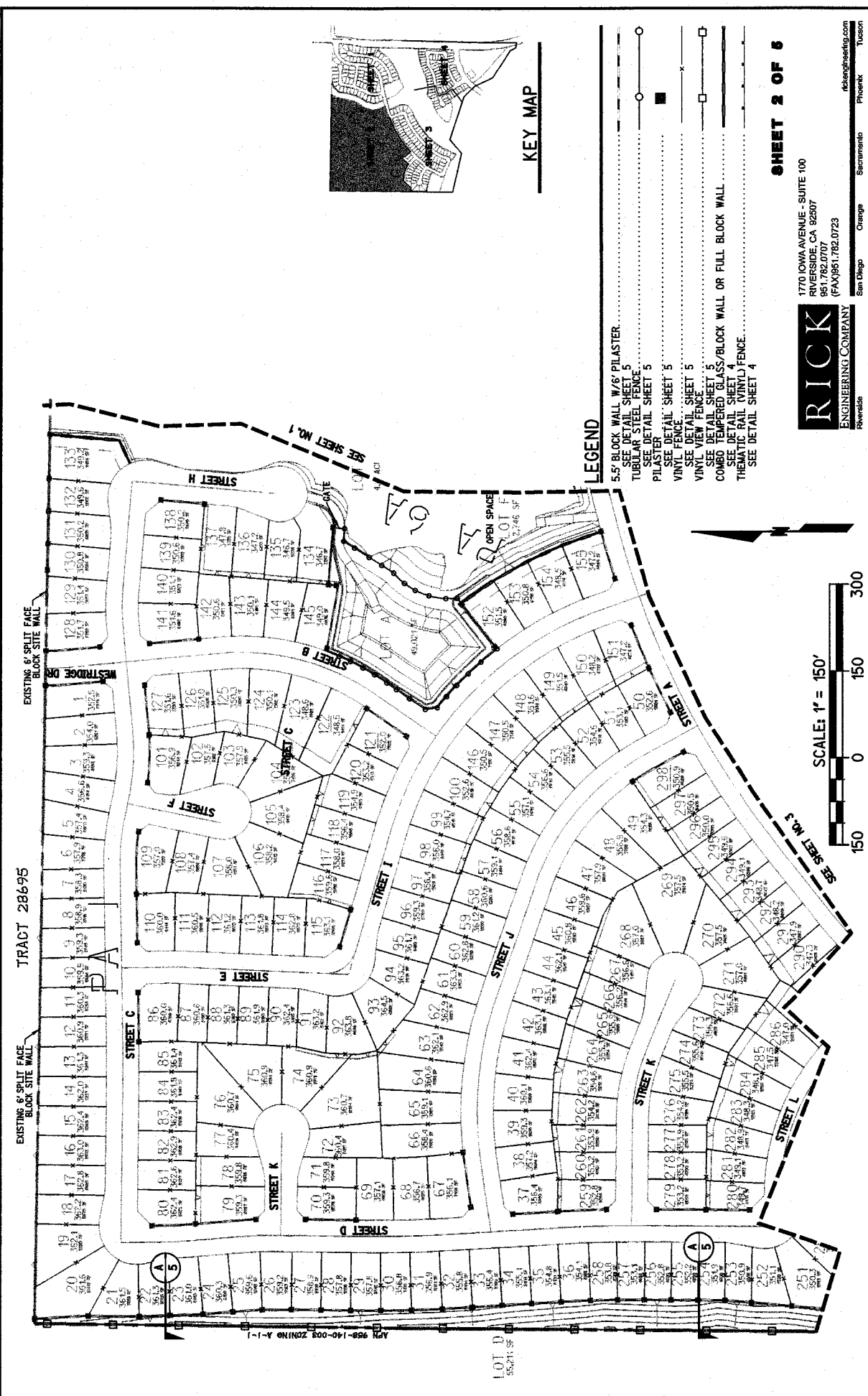
1770 IOWA AVENUE - SUITE 100  
 RIVERSIDE, CA 92507  
 951.782.0707  
 (FAX) 951.782.0723



San Diego Orange Sacramento Phoenix Tucson  
 rickengr.com

DATE PREPARED: OCTOBER 26, 2011  
**CONCEPTUAL WALL AND FENCING PLAN**  
**FOR TRACT NO 36376**

IN THE COUNTY OF RIVERSIDE, CALIFORNIA



TRACT 28695

EXISTING 6' SPLIT FACE BLOCK SITE WALL

EXISTING 6' SPLIT FACE BLOCK SITE WALL

SEE SHEET NO. 1

SEE SHEET NO. 3

KEY MAP

LEGEND

- 5.5' BLOCK WALL W/6' PILASTER..... SEE DETAIL SHEET 5
- TUBULAR STEEL FENCE..... SEE DETAIL SHEET 5
- PILASTER..... SEE DETAIL SHEET 5
- VINYL FENCE..... SEE DETAIL SHEET 5
- VINYL VIEW FENCE..... SEE DETAIL SHEET 5
- COMBO THERMOPLASTIC GLASS/BLOCK WALL OR FULL BLOCK WALL..... SEE DETAIL SHEET 4
- THEMATIC RAIL VINYL FENCE..... SEE DETAIL SHEET 4

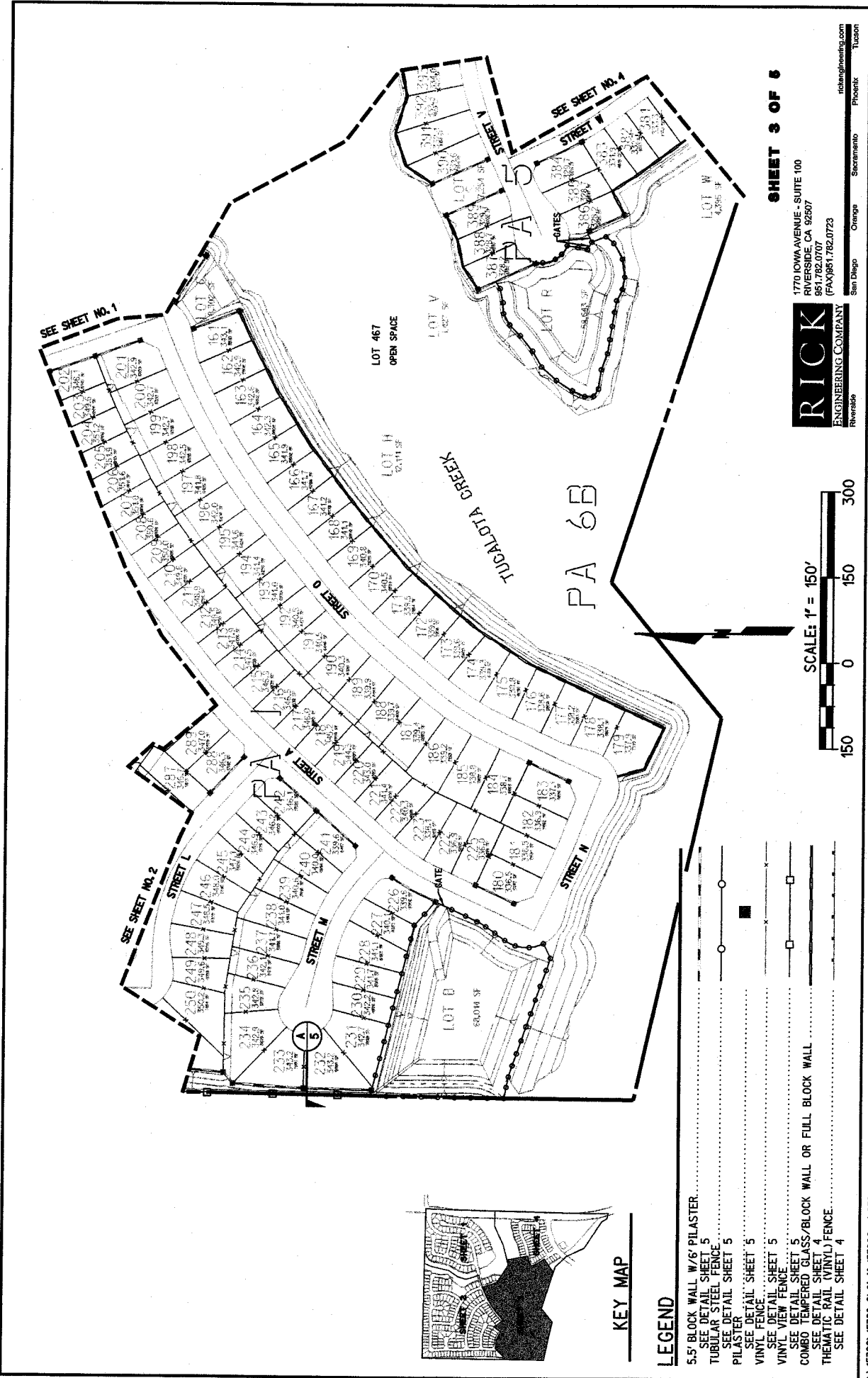
SHEET 2 OF 6

1770 IOWA AVENUE, SUITE 100  
 RIVERSIDE, CA 92507  
 951.782.0777  
 (FAX) 951.782.0723

**RICK**  
 ENGINEERING COMPANY

San Diego Orange Sacramento Phoenix Tucson  
 riversideengineering.com



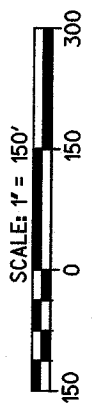


**SHEET 3 OF 6**

1770 IOWA AVENUE - SUITE 100  
 RIVERSIDE, CA 92507  
 951.782.0707  
 (FAX) 951.782.0723

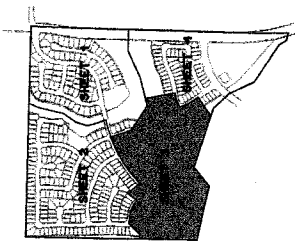


San Diego Orange Sacramento  
 Phoenix  
 rickengineering.com  
 Tucson



PLOT DATE: 09-APR-2012 JUN 15320C

**KEY MAP**

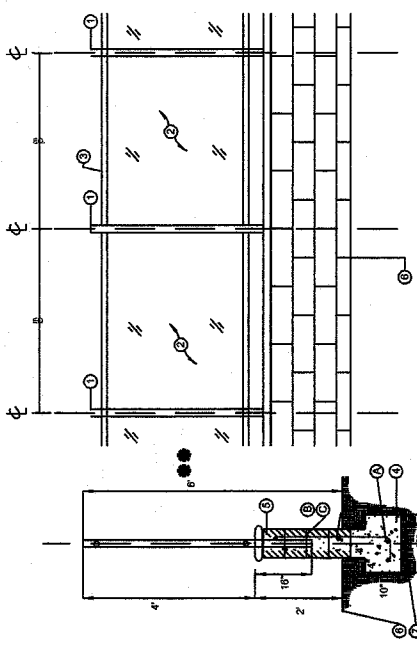


**LEGEND**

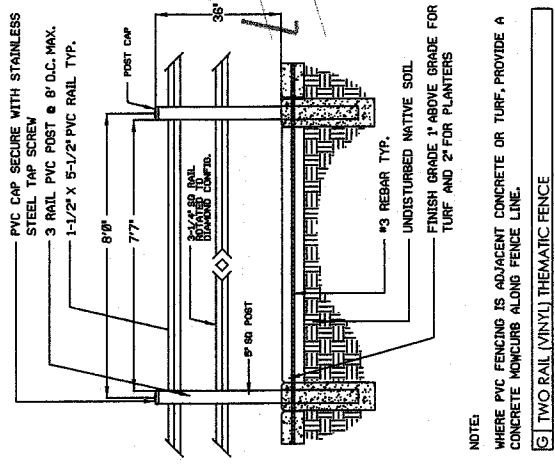
- 5.5' BLOCK WALL W/6" PILASTER.....
- SEE DETAIL SHEET 5
- TUBULAR STEEL FENCE.....
- SEE DETAIL SHEET 5
- PILASTER.....
- SEE DETAIL SHEET 5
- VINYL FENCE.....
- SEE DETAIL SHEET 5
- VINYL VIEW FENCE.....
- SEE DETAIL SHEET 5
- COMBO TEMPERED GLASS/BLOCK WALL OR FULL BLOCK WALL.....
- SEE DETAIL SHEET 4
- THEMATIC RAIL (VINYL) FENCE.....
- SEE DETAIL SHEET 4

● DUE TO NOISE MITIGATION MEASURE, WALLS FOR LOTS 376,377, AND 441-446 ARE TO BE INCREASED TO 6' HIGH. WALLS FOR LOTS 407 AND 437-440 ARE TO BE INCREASED TO 7' HIGH. WALLS TO WRAP AROUND THE END OF DWELLING UNITS TO PREVENT FLANKING OF NOISE INTO THE PROPERTY.

- ① 2" SQUARE TABULAR STEEL POST
- ② 1/2" X 24" TEMPERED GLASS PANEL
- ③ 1-3/8" SQUARE TUBULAR STEEL RAILS (TOP & BOTTOM)
- ④ CONG. FOOTING PER FIN. SCHED.
- REBAR:
  - Ⓐ #4 CONT. (2 TOTAL)
  - Ⓑ #4 (V) @ 24" O.C.
  - Ⓒ #4 (H) @ 18" O.C.
- ⑤ 8" X 8" X 16' SLUMP BLOCK CML FIN. SCHED.
- ⑥ FINISH GRADE
- ⑦ COMPACT SUBGRADE @ 95%

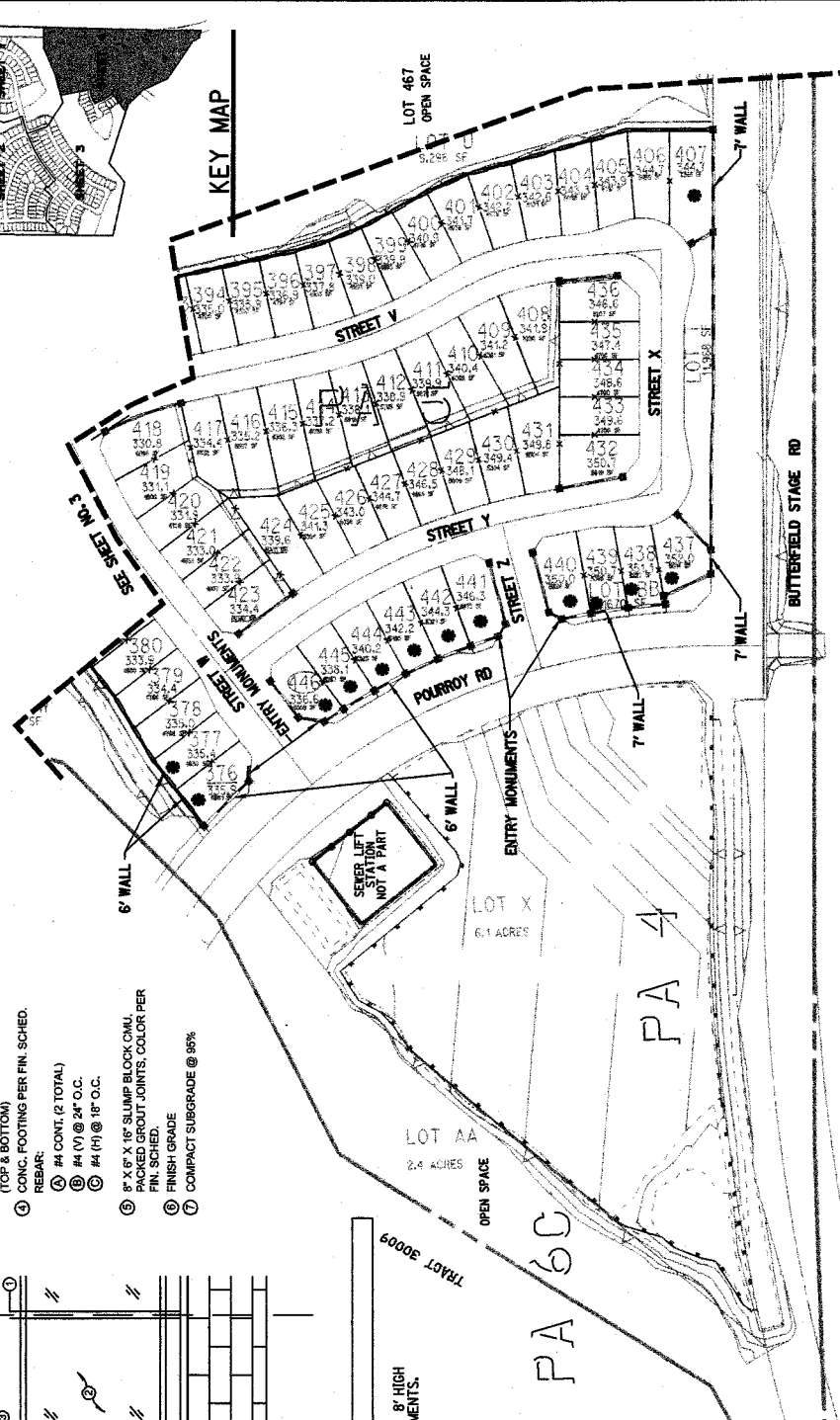


**F TEMPERED GLASS/BLOCK WALL**  
 ● HEIGHT OF TEMPERED GLASS/BLOCK WALL MAY BE INCREASED TO 8' HIGH ADJACENT TO LOTS 325-327 DUE TO NOISE MITIGATION REQUIREMENTS.



**LEGEND**  
 5.5' BLOCK WALL W/ 6' PILASTER ..... SEE DETAIL SHEET 5  
 TUBULAR STEEL FENCE ..... SEE DETAIL SHEET 5  
 VINYL FENCE ..... SEE DETAIL SHEET 5  
 VINYL VIEW FENCE ..... SEE DETAIL SHEET 5  
 COMBO TEMPERED GLASS/BLOCK WALL OR FULL BLOCK WALL ..... SEE DETAIL SHEET 4  
 THEMATIC RAIL (VINYL) FENCE ..... SEE DETAIL SHEET 4

**NOTE:**  
 WHERE PVC FENCING IS ADJACENT CONCRETE OR TURF, PROVIDE A CONCRETE MONCURB ALONG FENCE LINE.  
 ⑤ TWO RAIL (VINYL) THEMATIC FENCE



APN 958-170-018  
 APN 958-170-021  
 APN 958-170-022

SCALE 1" = 150'

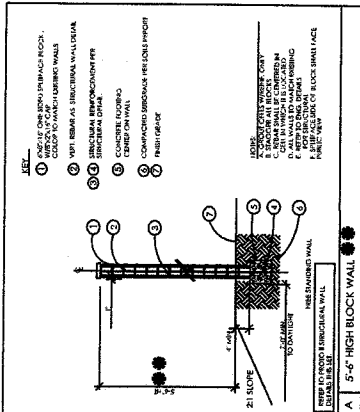
0 150 300

**SHEET 4 OF 6**

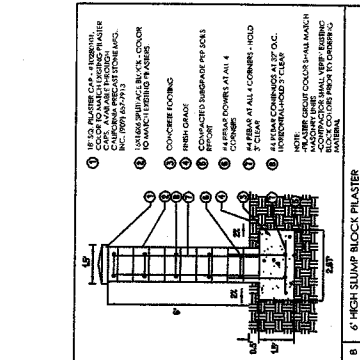
1770 IOWA AVENUE - SUITE 100  
 RIVERSIDE, CA 92507  
 951.782.0700  
 (FAX) 951.782.0723

**RICK**  
 ENGINEERING COMPANY

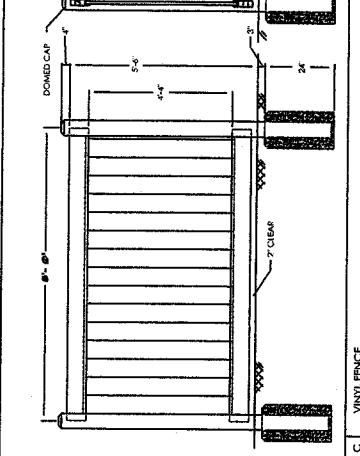
San Diego Change Sacramento Phoenix Tucson  
 nokeengineering.com



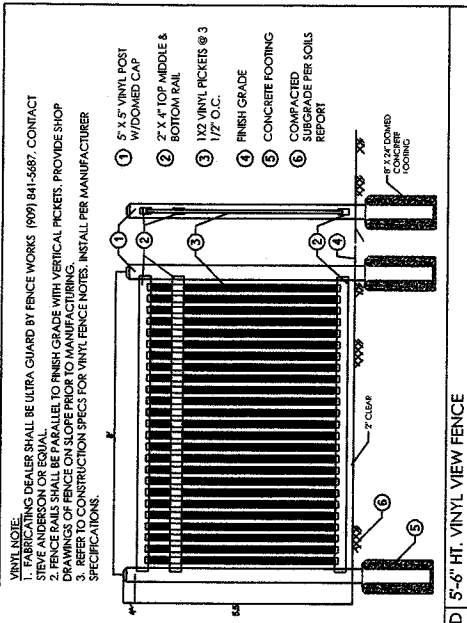
**A** 5'-6" HIGH BLOCK WALL



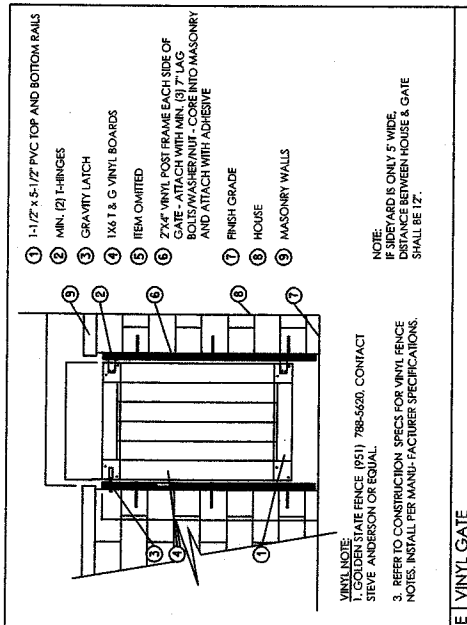
**B** 6" HIGH SLUMP BLOCK PLASTER



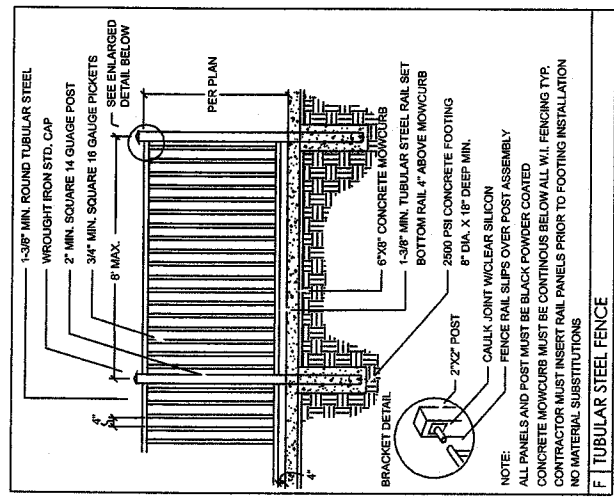
**C** VINYL FENCE



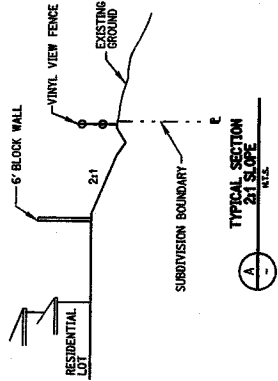
**D** 5'-6" HT. VINYL VIEW FENCE



**E** VINYL GATE



**F** TUBULAR STEEL FENCE



**G** TYPICAL SECTION 2:1 SLOPE

- VINYL NOTE:**
1. GOLDEN STATE FENCE (951) 788-5620, CONTACT STEVE ANDERSON OR EQUAL.
  2. REFER TO CONSTRUCTION SPECS FOR VINYL FENCE.
  3. NOTES, INSTALL PER MANUFACTURER SPECIFICATIONS.
- VINYL GATE NOTE:**
1. FINISH GRADE
  2. HOUSE
  3. MASONRY WALLS
  4. 27x4" VINYL POST FRAME EACH SIDE OF GATE - ATTACH WITH MIN. (8) 7" LAG BOLTS TO MASONRY AND ATTACH WITH ADHESIVE
  5. ITEM OMITTED
  6. 1x4 T & G VINYL BOARDS
  7. GRAVITY LATCH
  8. MIN. (2) THIRDS
  9. 1 1/2" x 5 1/2" PVC TOP AND BOTTOM RAILS

- VINYL NOTE:**
1. FABRICATING DEALER SHALL BE ULTRA GUARD BY FENCE WORKS (909) 841-5887, CONTACT STEVE ANDERSON OR EQUAL.
  2. FENCE RAILS SHALL BE PARALLEL TO FINISH GRADE WITH VERTICAL PICKETS. PROVIDE SHOP DRAWINGS OF FENCE ON SLOPE PRIOR TO MANUFACTURING.
  3. REFER TO CONSTRUCTION SPECS FOR VINYL FENCE NOTES. INSTALL PER MANUFACTURER SPECIFICATIONS.
- VINYL VIEW FENCE NOTE:**
1. 5" x 5" VINYL POST W/DOME CAP
  2. 2" x 4" TOP MIDDLE & BOTTOM RAIL
  3. 1x2 VINYL PICKETS @ 3 1/2" O.C.
  4. FINISH GRADE
  5. CONCRETE FOOTING
  6. COMPACTED SUBGRADE PER SOILS REPORT

● HEIGHT OF BLOCK WALL MAY BE INCREASED TO 8' HIGH ADJACENT TO LOTS K AND 325-335, 7' HIGH ADJACENT TO LOTS 407 AND 437-440, AND 6' HIGH ADJACENT TO LOTS 376-377, AND 441-446 DUE TO NOISE MITIGATION REQUIREMENTS.



**H** TYPICAL LOT WALLS AND FENCE

**RIK**  
ENGINEERING COMPANY  
Riverside

1770 IOWA AVENUE - SUITE 100  
RIVERSIDE, CA 92507  
951.782.0707  
(FAX) 951.782.0723

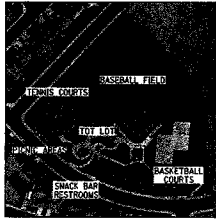
San Diego Orange Sacramento Phoenix Tucson

**SHEET 6 OF 6**  
**NOT TO SCALE**

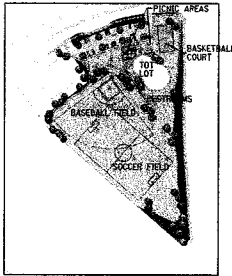
**NOTE:**  
COLORS AND ELEVATIONS ON FENCE/WALL TYPES TO MATCH EXISTING

# PUBLIC PARKS IN THE VICINITY OF TRACT 36376

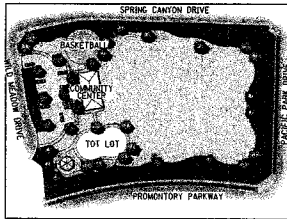
OCTOBER 21, 2011



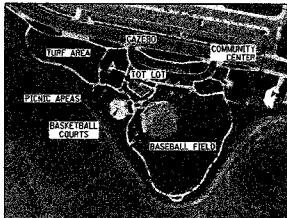
CROWN VALLEY VILLAGE PARK (5.7 ACRES)



PROP. RANCHO BELLA VISTA PHASE 3 PARK (6.0 ACRES)



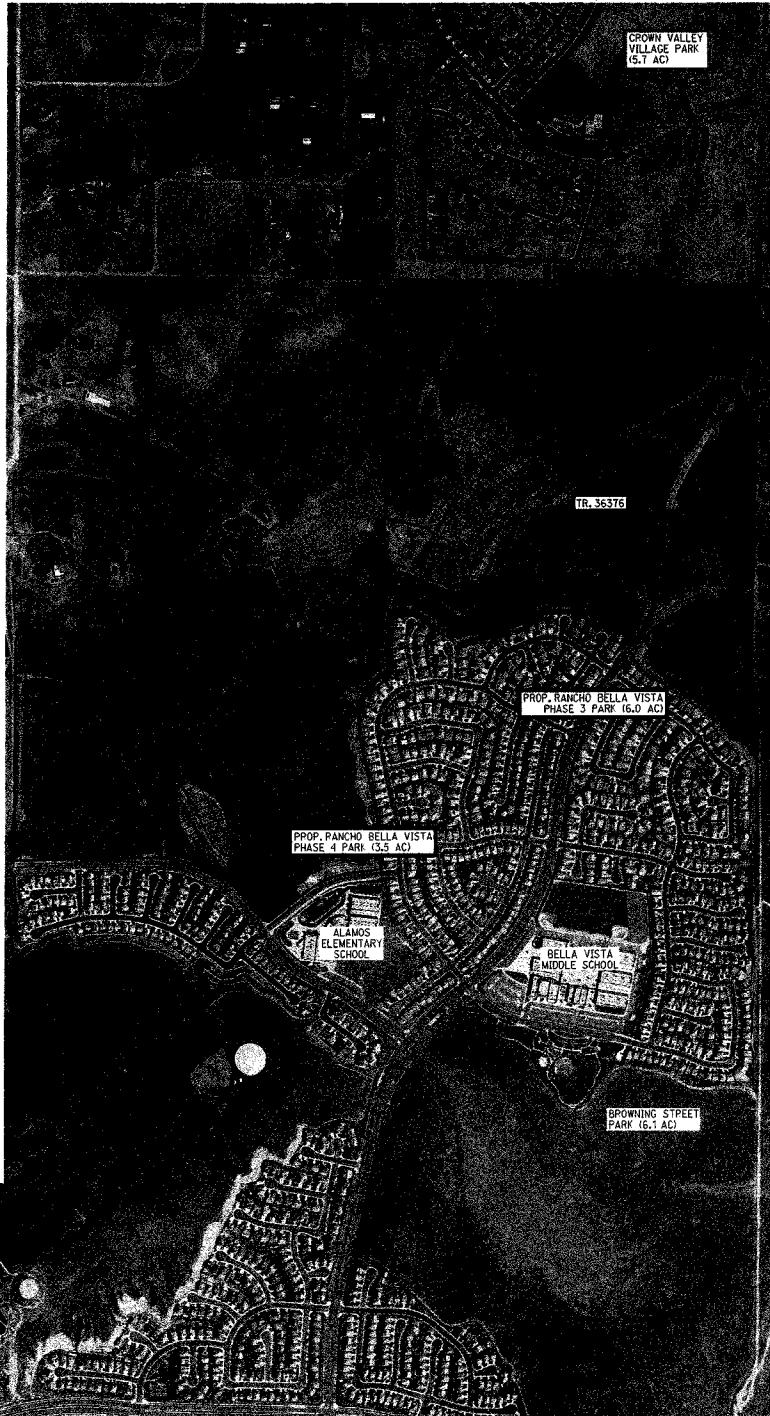
RANCHO BELLA VISTA PHASE 4 PARK (3.5 ACRES)



BROWNING STREET PARK (6.1 ACRES)



EAST PARK



CROWN VALLEY VILLAGE PARK (5.7 AC)

TR. 36376

PROP. RANCHO BELLA VISTA PHASE 3 PARK (6.0 AC)

PROP. RANCHO BELLA VISTA PHASE 4 PARK (3.5 AC)

ALAMOS ELEMENTARY SCHOOL

BELLA VISTA MIDDLE SCHOOL

BROWNING STREET PARK (6.1 AC)

**LEGEND**

- EXISTING PARK
- PROPOSED PARK
- PROPOSED FACILITY
- PROPOSED FACILITIES INCLUDE BENCH, WALKING TRAIL, LANDSCAPING

