

**SUBMITTAL TO THE BOARD OF SUPERVISORS
COUNTY OF RIVERSIDE, STATE OF CALIFORNIA**



721A

FROM: TLMA - Transportation Department

SUBMITTAL DATE:
October 3, 2012

SUBJECT: Amendment to the Engineering Services Agreement with CH2M HILL, Inc., for the Clinton Keith Road: Interstate 215 to SR-79 project

RECOMMENDED MOTION: That the Board of Supervisors:

1. Approve Amendment Number 4 to the Engineering Services Agreement between CH2M HILL and the County of Riverside, (Agreement No. 02-02-005), and;
2. Authorize the Chairman of the Board to execute the same.

BACKGROUND:

On March 5, 2002 the Board of Supervisors approved the Engineering Services Agreement with

Patricia Romo

Juan C. Perez

Director of Transportation

Patricia Romo

Deputy Director of Transportation

Jm/sv/gl

(Continued On Attached Page)

FINANCIAL DATA	Current F.Y. Total Cost:	\$ 815,234	In Current Year Budget:	Y
	Current F.Y. Net County Cost:	\$	Budget Adjustment:	N
	Annual Net County Cost:	\$	For Fiscal Year:	12/13

SOURCE OF FUNDS: TUMF (100%)	Positions To Be Deleted Per A-30	<input type="checkbox"/>
	Requires 4/5 Vote	<input type="checkbox"/>

There are no General Funds used in this project.

C.E.O. RECOMMENDATION:

APPROVE

BY: *Tina Grande*
Tina Grande

County Executive Office Signature

MINUTES OF THE BOARD OF SUPERVISORS

On motion of Supervisor Stone, seconded by Supervisor Ashley and duly carried, IT WAS ORDERED that the above matter is approved as recommended.

Ayes: Buster, Stone, Benoit and Ashley
 Nays: None
 Absent: Tavaglione
 Date: December 4, 2012
 xc: Transp.

Kecia Harper-Ihem
Clerk of the Board

By: *[Signature]*
Deputy

Prev. Agn. Ref. 3/5/02 (3.41)
11/2/04 (3.30), 12/19/06 (3.46),
11/2/10 (3.51)

District: 3/3

Agenda Number:

3.30

ATTACHMENTS FILED
WITH THE CLERK OF THE BOARD

FORM APPROVED COUNTY COUNSEL
BY: *[Signature]* DATE: 11/20/12
MARSHAL VICTOR
Departmental Concurrence

Dept Recomm.: Consent Policy
Per Exec. Ofc.: Consent Policy

The Honorable Board of Supervisors

RE: Amendment to the Engineering Services Agreement with CH2M HILL, Inc., for the Clinton Keith Road: Interstate 215 to SR-79 project

October 3, 2012

Page 2 of 2

CH2M HILL for the preparation of environmental documentation and preliminary engineering design for the Clinton Keith Road improvement project between Interstate 215 and SR-79 in the County of Riverside. On November 2, 2004 and on December 19, 2006, the Board of Supervisors approved Amendment 1 and Amendment 2, which modified the scope to incorporate additional environmental tasks and to provide final engineering design services necessary to prepare plans, specifications and estimates. On November 2, 2010 the Board of Supervisors approved Amendment 3, which extended the termination date to June 30, 2014 in order to continue with design activities, support right-of-way acquisition, and develop construction strategies and support.

The Clinton Keith Road project improvements provide for a new six lane roadway between Interstate 215 and State Route 79. In an effort to expedite the completion of this new connection and the limited funding availability, the project will be built in multiple phases. The City of Murrieta recently completed the construction of the Clinton Keith Road segment between I-215 and Whitewood Road. The segment between Trois Valley and Leon Road was completed as part of the DR Horton development. The next segment proposed is the south half of the roadway between Whitewood Road and Trois Valley. Upon completion of this phase, traffic will have access from I-215 to Leon Road, with two through lanes (one in each direction) and a center median.

This Amendment 4 will modify the contract scope to include the revision of the environmental documents and design plans, and obtain jurisdictional permitting for the revised scope of work. The major revisions to the scope of services include:

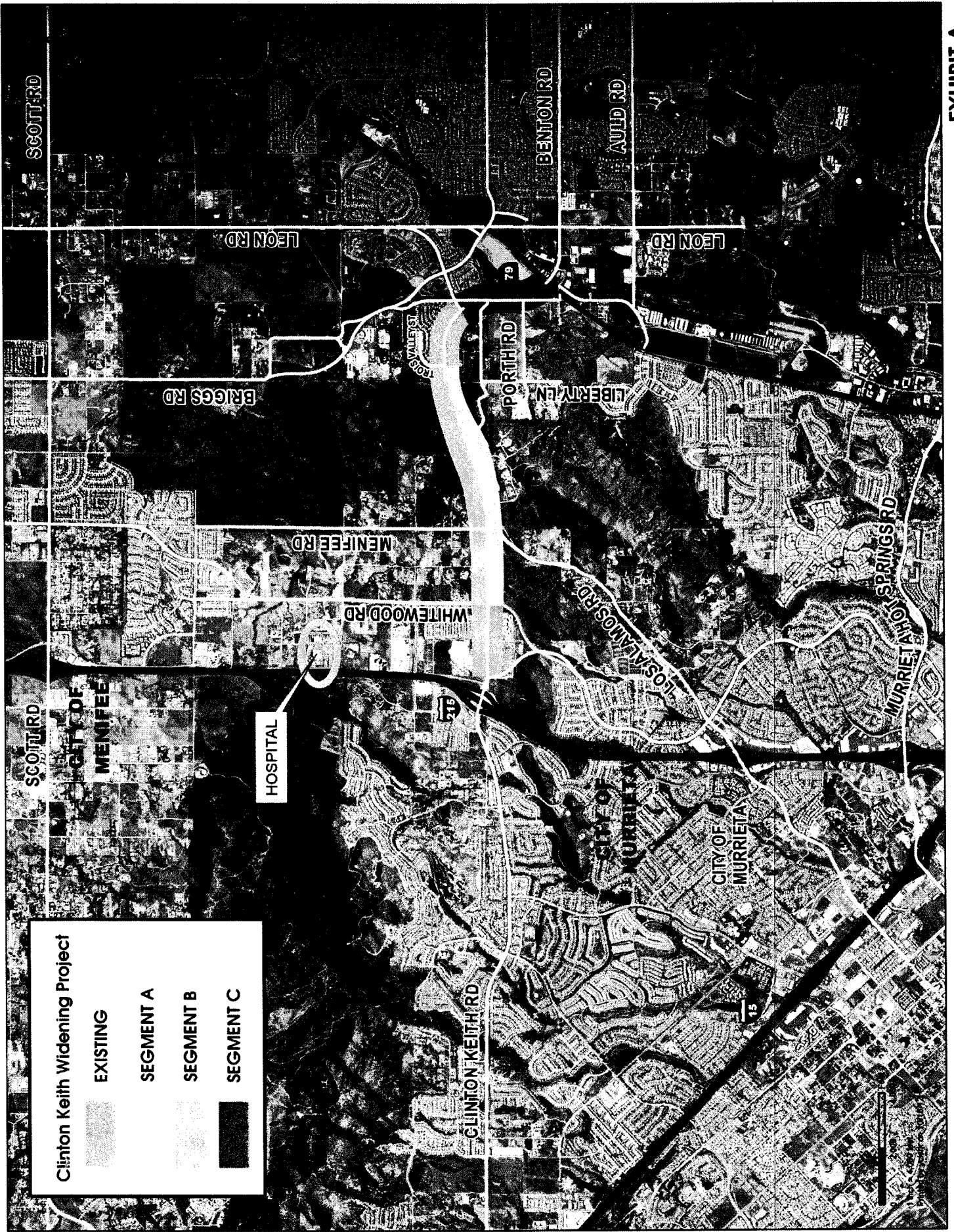
- EIR addendum – Changes in existing site conditions require supplemental documentation to the environmental impact report.
- Additional design tasks – the design plans and specifications need to be modified for a half width construction of the roadbed. In addition, design standards for bridges have changed causing the need to revise analysis and calculations to conform to the new codes and standards. This change will result in an increased lifespan of the bridge.

Amendment 4, as negotiated by the Transportation Department, increases the budget by \$815,234 for the described services and includes a contingency amount of \$74,112 to be used only with prior written approval from the Director of Transportation. The total cost of Engineering and Environmental services to date are within industry standards for a \$40 million estimated construction cost. The project budget is summarized below:

Budget Summary:

Current Contract:	\$ 3,341,388
Amendment 4:	\$ 815,234
Total Contract	\$ 4,156,622

Project No. B2-0472



Clinton Keith Widening Project

- EXISTING
- SEGMENT A
- SEGMENT B
- SEGMENT C

AMENDMENT TO AGREEMENT BETWEEN
THE COUNTY OF RIVERSIDE AND CH2M HILL INC.

FOR ENGINEERING SERVICES ON THE CLINTON KEITH ROAD - I-215 TO SR-79 PROJECT

THIS AMENDMENT 4 (hereinafter the "Amendment") to an agreement is made and entered into as of this 4th day of Dec., 2012, by and between the County of Riverside, a political subdivision of the State of California (hereinafter the "COUNTY"), and CH2M Hill Inc. (hereinafter "ENGINEER").

RECITALS

- A. COUNTY and ENGINEER have entered in an agreement entitled " Engineering Services Agreement for the Clinton Keith - I-215 to SR-79 project between the County of Riverside • Transportation Department and CH2M Hill Inc.," that is dated March 5, 2002 and amended on November 2, 2004, December 19, 2006 and November 2, 2010 (hereinafter the "Agreement"). The Agreement provides the terms and conditions, scope of work, schedule and budget for the performance of professional and technical services necessary to prepare an environmental document, project report, plans, specifications and estimates.
- B. The parties desire to supplement the current Agreement to extend the expiration date, modify the scope of services to be provided by the ENGINEER, and increase the contract budget.

AGREEMENT

NOW, THEREFORE, in consideration of the mutual covenants hereinafter contained, the parties agree as follows:

1. The current contract budget of \$3,341,388.00 shall be increased by \$815,234.00 including contingencies to \$4,156,622.00 as provided below:
Increase the Phase I budget by the amount of \$110,414.00, the Phase II budget by the amount of \$598,998.00, and the Phase IV budget by the amount of \$31,710.00, and contingency of \$74,112.00 for engineering services necessary to incorporate additional environmental tasks, design rework due to the implementation of a phased project and to provide additional out of scope tasks. Detailed descriptions of the extra work and summaries of the requested and recommended budget adjustments are provided in attachment "A" of this Amendment.
2. The existing Engineering Services Agreement shall be extended to June 30, 2016. All covenants set forth in the amended Agreement shall be completed by the said date unless extended by another supplemental agreement.

1 3. Except to the extent specifically modified or amended hereunder, all of the terms, covenants and conditions of
2 the Agreement as approved on dated March 5, 2002 and amended on November 2, 2004 shall remain in full
3 force and effect between the parties hereto.


4 IN WITNESS HEREOF, the parties hereto have caused this Amendment to the Agreement to be duly executed
5 this day and year first written above.

6
7
8
9
10
11
12
13
14
15
16
17
18
19
20
21
22
23
24
25
26
27
28
29

ARTICLE VII • APPROVALS

COUNTY Approvals

RECOMMENDED FOR APPROVAL:

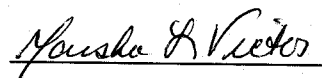
 Dated: 11/20/12

JUAN C. PEREZ

Director of Transportation and Land Management

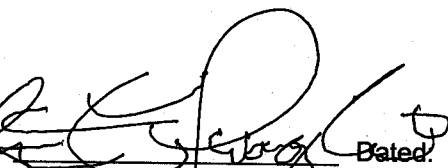
APPROVED AS TO FORM:

PAMELA J. WALLS, COUNTY COUNSEL

 Dated: 11/20/12

By Deputy

APPROVAL BY THE BOARD OF SUPERVISORS

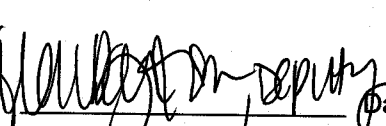
 Dated: DEC 04 2012

JOHN TAVAGLIONE

PRINTED NAME

Chairman, Riverside County Board of Supervisors

ATTEST:

 Dated: DEC 04 2012

KECIA HARPER-IHEM

Clerk to the Board of Supervisors (SEAL)

ENGINEER Approvals

CH2M HILL, Inc.:

 Dated: 9/26/12

Hany Haroun

PRINTED NAME

Geographic Operations Manager

TITLE

Clinton Keith Road Extension Project

Amendment 4 Scope of Work

September 26, 2012

Introduction

This Scope of Work and Cost Estimate is submitted to continue environmental and design support of the Clinton Keith Road Extension Project (Project) for the Riverside County Transportation Department (RCTD). Amendment 4 is required in order to incorporate modifications to the scope of work for the current CH2M HILL INC Engineering and Environmental Services Agreement as follows:

1. The scope of work is revised to include engineering and environmental analyses and incorporation of alternative design features beyond that previously designed at the 99% design and draft environmental document levels.
2. Two packages will be delivered. The first package will include plans, specifications and estimates from Whitewood Road to Trois Valley Street (half width roadway paving). The second package will include plans, specifications and estimates from Leon Road to the improvements at the Regency Development (half width roadway paving). Reports and Technical Memorandums will be completed for the project as a whole and will not be separated out per package but will include a new project description with details regarding construction phasing.
3. An EIR Addendum will be prepared to document changes in impacts to affected environmental resources related to the construction phasing of the project. A Supplemental EIR for the project was approved in January 2006 for a 6-lane facility. However, due to financial constraints, the project will now be phased, with the first phase consisting of paving on the eastbound lanes only (half width roadway paving) and striped to include one travel lane in each direction with full grading for the future 6-lane facility.
4. With the D.R. Horton development in place, there are now wetlands present within the direct impact area of the project that weren't previously identified in the January 2006 Supplemental EIR. The wetlands connect to French Valley Creek downstream near the east side of the project. As such, updated impacts to wetlands/waters of the U.S. would be documented in the EIR Addendum.
5. A Supplemental Jurisdictional Delineation and Permitting Report (JD Report) is now needed due to changes in existing site conditions since the JD Report was prepared in August 2006. This is due to the newly created wetlands as mentioned in Item 4.
6. The scope of work of the contract is further modified to extend the schedule of the project due to protracted right of way negotiations between RCTD and land owners

requiring additional coordination, project development and support efforts by the engineering and environmental teams.

The following text describes the scope of work to be done for each task that is involved in this Amendment No. 4. Tasks that were in the original contract but not affected by the proposed changes are not discussed.

PHASE 1 (PA&ED)

Engineering and Management Tasks - \$110,413.91

A. (Task T1.01) – Project Administration/Project Management - \$17,194.18

The scope of these tasks has been modified and the associated budget needs to be increased by a total of \$17,194.18 for the following reasons:

RCTD's decision to revise the project features as well as the extended schedule for right of way negotiations has delayed the project. The original contract and Amendments included project management efforts through 2009. Additional Project Management and Administration efforts for Phase 1 (PA&ED) will be provided through December 2013.

Additional budget has been increased to cover the associated costs for printing of all documents including: draft/final reports.

Environmental Tasks

B. (Task T1.07.01) – EIR Addendum - \$23,536.55

The cost associated with this task is \$23,536.55. An EIR Addendum is needed based on the following reasons:

Project phasing and differing site conditions resulting from recent developments require an EIR Addendum.

The scope of work for the EIR Addendum assumes the following:

- The environmental footprint will remain the same as that presented in the January 2006 Supplemental EIR.
- No public circulation will occur for the EIR Addendum
- All proposed mitigation presented in the Supplemental EIR would remain the same, except for those measures associated with Waters of the U.S./State impacts.
- An updated description of the changes to the project due to phasing of construction will be included for the following resources only:

Noise

- A brief section to explain the removal of previously proposed sound barriers
- No new noise measurements or data will be obtained

- The approved 2030 traffic forecasts used in the 2004 traffic report prepared by CH2M HILL are still valid for future noise impacts

Traffic

- A section on traffic impacts will be included that incorporates revisions made as presented in Task P.

Air Quality

- A section to describe that there will be no additional adverse impacts associated with air quality, and to provide the updated CEQA checklist response on greenhouse gas emissions will be included.
- No new air quality studies will be conducted

Water Quality

- A section will be included on water quality that will incorporate information from the technical memorandum identified in Task I. Information including best management practices, erosion control, and modifications to drainages will be incorporated into the text.

Biological Resources

- The biological resources section will only include changes to impacts associated with the newly created waters of the U.S./state located at the outlet near Clinton Keith Road/Leon Road. This section will incorporate information from the updated Supplemental Jurisdiction Delineation and Permitting Report identified below in Task C, updated mitigation for impacts to waters of the U.S./state, and the updated Determination of Biologically Equivalent or Superior Preservation (DBESP) for impacts to riparian/riverine resources as identified in the MSHCP. See Task C below.
- No other changes in impacts to biological resources are anticipated as a result of the construction phasing.
- All structures incorporated in the project for purposes of wildlife crossings, as presented in the Supplemental EIR from January 2006, will remain.

Aesthetics

- A Viewshed Map for the proposed Project will be prepared that identifies views of the roadway given the final roadway elevation. The viewshed map will identify the location of existing sensitive residential viewers and will be included as an appendix in the EIR Addendum.
- A section on aesthetics will be included in the EIR Addendum that will incorporate information based on the viewshed map. Information related to any changes in the existing environment since the Supplemental EIR in January 2006 will be incorporated, as well as, a discussion about how mitigation measure A-1 will be implemented through the phasing of construction activities.

Submittals:

- Draft EIR Addendum and Final EIR Addendum

Assumptions:

- In addition to the assumptions listed above for each resource, approval of the EIR Addendum will be achieved after addressing no more than one round of review comments on the Draft EIR Addendum unless additional review(s) are due to quality of the deliverables.

C. (Task T1.07.02) – Supplemental Jurisdictional Delineation and Permitting Report - \$11,605.66

The cost associated with this task is \$11,605.66. A Supplemental JD Report will be prepared to document updated impacts to wetlands/waters of the U.S. The JD Report will be used to submit to the appropriate resource agencies.

Submittals:

- Draft Supplemental JD Report and Final Supplemental JD Report

Assumptions:

- The Supplemental JD Report will only discuss impacts related to the newly created wetland near the outlet of Clinton Keith Road/Leon Road.
- One site visit is anticipated to verify data collected in 2011, and to obtain site photographs
- The Supplemental JD Report will include a copy of the JD Report from August 2006 as an appendix
- Approval of the Final Supplemental JD Report will be achieved after addressing no more than one round of review comments on the Draft Supplemental JD Report unless additional review(s) are due to quality of the deliverables.

D. (Task T1.07.03) – Agency Coordination for Joint Project Review and MSHCP Consistency - \$15,697.43

The cost associated with this task is \$15,697.43. An updated Joint Project Review (JPR)/MSHCP Consistency will need to take place with the Riverside Resource Conservation Authority (RCA), California Department of Fish and Game (CDFG), and United States Fish and Wildlife Service (USFWS) for new impacts to riparian/riverine resources based on results from the updated JD Report identified above in Task C.

Additionally, due to increases in impacts to waters of the U.S./state, an updated Determination of a Biologically Equivalent or Superior Preservation (DBESP) alternative must be presented to the wildlife agencies.

Submittals:

- Updated Draft and Final Joint Project Review (JPR) Package that includes the updated DBESP

Assumptions:

- This scope includes one site visit with the wildlife agencies
- Approval of the Final Joint Project Review Package will be achieved after addressing no more than one round of review comments on the Draft Joint Project Review Package unless additional review(s) are due to quality of the deliverables.

E. (Task T1.07.04) – Permit Applications - \$12,155.40

The cost associated with this task is \$12,155.40. Updated permit applications would need to be re-submitted to the CDFG, Regional Water Quality Control Board (RWQCB), and the Army Corps of Engineers (ACOE) based on changes in impacts to waters of the U.S./state.

Submittals:

- Streambed Alteration Agreement permit package
- Regional Water Quality Control Board 401 permit package
- Army Corps of Engineers 404 permit package

Assumptions:

- The scope for this task includes 3 site visits to account for differing availability among the three permitting agencies.
- Permits would still be split into East/West sections as previously proposed. As such, the west side impacts would remain the same. The east side impacts would increase due to the newly created wetlands that connect to French Valley Creek.
- This scope assumes the impacts to waters of the U.S. on both the west and east side will qualify for a Nationwide 404 Permit.
- This scope does not include time or cost to proceed with an individual 404 permit.
- All permit fees would be the responsibility of RCTD.
- Approval of the final permit packages will be achieved after addressing no more than one round of review comments on each draft permit package from RCTD unless additional review(s) are due to quality of the deliverables..

F. (Task T1.07.05) – Habitat Mitigation and Monitoring Plan for East Side of Project - \$12,675.64

The cost associated with this task is \$12,675.64. A Habitat Mitigation and Monitoring Plan (HMMP) was prepared in November 2008 and was used to obtain the 401 permit for the west Side of the project. A second HMMP would be prepared for the east side of the project and will be submitted to the CDFG, RWQCB, and ACOE based on updated impacts to waters of the U.S./state.

Submittals:

- Draft and Final HMMP for East Side of Project

Assumptions:

- The HMMP will only include details regarding impacts to waters of the U.S./state on the east side of the project.
- Approval of the Final HMMP will be achieved after addressing no more than one round of review comments on the Draft HMMP from RCTD unless additional review(s) are due to quality of the deliverables.

G. (Task T1.07.06) – Updated Cultural Studies - \$17,549.05

The cost associated with this task is \$17,549.05. Since the Supplemental EIR was approved in 2006, an updated records search should be performed to ensure impacts to cultural resources will not change. Additionally, to comply with mitigation measure CR-1 in the Supplemental EIR, a Late Discovery Archaeological Treatment Plan (LDATP) will be prepared.

Also, as part of the Section 404 permitting process, the Army Corps of Engineers must initiate the Section 106 of the National Historic Preservation Act process. Section 106 requires Federal agencies and their authorized designees to consider the effects of their undertakings on archeological and historic properties listed on or eligible for the National Register of Historic Places. This task includes time to initiate the request to the Army Corps for Section 106 compliance.

Submittals:

- Cultural Resource Technical Memorandum documenting updated studies and results.
- Late Discovery Archaeological Treatment Plan
- Section 106 Request to Army Corps of Engineers

Assumptions:

- This scope assumes two field visits to verify previous findings for historic and paleontological resources.
- Approval of the Final LDATP will be achieved after addressing no more than one round of review comments on the Draft LDATP from RCTD, and two reviews from the Pechanga Tribe, unless additional review(s) are due to quality of the deliverables.
- Army Corps has determined that the Section 106 Area of Potential Effect for the permit actions will be the jurisdictional area plus 250 feet upstream and downstream within the Clinton-Keith right-of-way (based on previous correspondence in 2004).

This scope assumes no cultural resources will be found that weren't previously identified in the Supplemental EIR dated January 2006. Therefore, no additional cultural studies are included in this scope.

PHASE 2 (PS&E)

Engineering and Management Tasks - \$598,998.36

H. (Task T2.10.PM) – Project Administration/Project Management - \$23,988.38

The scope of these tasks has been modified and the associated budget needs to be increased by a total of \$23,988.38 for the following reasons:

The original contract and Amendments included project management efforts through 2009. Additional Project Management and Administration efforts for Phase 2 (PS&E) will be provided for the duration of the roadway design through December 2013.

Additional budget has been included to cover the associated costs for printing of all documents including: plans, specifications, estimates and draft/final reports. This will also cover the cost of full size mylars at the completion of the project.

I. (Tasks T2.10.01) – Additional Roadway Design Tasks - \$74,947.10

The scope of this task has been modified and the associated budget needs to be increased by \$74,947.10 for the following reasons:

Additional work in support of paving a half width along the eastbound roadbed and reducing the number of lanes from 6 lanes (3 in each direction) to 2 lanes (one in each direction) along Clinton Keith Road from Whitewood Road to State Route 79, and the separation of this work into two separate packages, Whitewood Road to Trois Valley and from Leon Road to the Regency Improvements, will require the following additional Tasks:

- Revise existing Title Sheet to cover the area from Whitewood Road to Trois Valley and create new Title Sheet for the area from Leon Road to the Regency Improvements.
- Revise existing typical sections to show traffic in the eastbound (EB) direction only. Eliminate pavement in the westbound (WB) direction and north curb of median from the typical sections and revise all callouts accordingly. Create new typical sheets to cover the area from Leon Road to the Regency Improvements.
- Revise roadway layout plans and separate into two packages. Eliminate north side of curb along the median and WB roadway callouts. Revise intersection details and curb ramps. Provide ultimate curb along the median of the EB lanes.
- Asphalt paving will be added on Briggs Road roadway plans near the existing culvert crossing of French Valley Creek.
- Separate profile sheets out into two packages.
- Prepare two bid packages.
- Remove soundwall and driveway on the Lesovsky property from the layout sheets. Remove soundwall plan and details from plans and renumber accordingly.
- Coordinate all roadway plans with the City of Murrieta/Developer of the Regency project and incorporate into the RCTD set of plans for construction.
- Regency plans have already been approved by Caltrans. No additional changes to their plans will be made.
- Construction Detail sheets will need to be modified for elimination of median and paved area on WB lanes and revised at all intersection locations. These will need to be separated out for each respective package.

- Contour Grading plans will show the ultimate excavation and embankment needed for the full roadway width.
- Contour Grading plans will be revised to include additional erosion control measures for the unpaved WB lanes. These will need to be separated out for each respective package
- Additional utility coordination and support will be completed. RCTD will remain as the primary utility coordinator. CH2M HILL will support all efforts in the coordination of relocated facilities within the project limits.
- Signing and striping plans will need to be modified to include striping and signs for two lanes along the EB lanes only. Bike lanes will not be striped or signed as part of this interim project. These plans will need to be separated out for each respective package
- Bridge treatments for Warm Springs Creek Bridge, French Valley Creek Bridge, and the wildlife overcrossing bridge will be prepared to comply with mitigation measure A-1 identified in the 2006 Supplemental EIR.
- No street lighting plans will be prepared as part of this interim project.
- No traffic signal plans will be prepared at Menifee Rd, Trois Valley St, Leon Rd, Porth Rd or SR 79 as part of this interim project.
- Coordination with service planner at SCE will be needed to install Intersection Safety Lighting on existing poles since traffic signals are not being installed.

Submittals:

- 99% & Final PS&E submittal for each package.

Assumptions:

- Approval of the Final PS&E submittals will be achieved after addressing no more than one additional round of review comments on the 99% submittals for each package unless additional review(s) are due to quality of the deliverables..

J. (Tasks T2.10.02) – Additional Drainage Design Tasks - \$53,937.40

The scope of this task has been modified and the associated budget needs to be increased by \$53,937.40 for the following reasons:

Additional work in support of reducing the number of lanes along Clinton Keith Road from Whitewood Road to State Route 79 will require the following additional Tasks:

- Drainage plans, profiles and details will need to be modified for all inlets originally constructed within the WB lanes, including grated line drains along the medians. The profiles will need to be adjusted and details modified. These plan and profiles sheets will need to be separated out for each respective package
- Technical Memorandum for the whole project will be prepared for this interim condition. This memorandum will not be broken out for two separate packages.

- The low water crossing (culvert) below Briggs Road, at French Valley Creek, is not part of this project. No revisions to the existing culvert will be made as part of this project.

Submittals:

- 99% & Final PS&E submittal for each package.

Assumptions:

- Approval of the Final PS&E submittals will be achieved after addressing no more than one additional round of review comments on the 99% submittals for each package unless additional review(s) are due to quality of the deliverables.

K. (Tasks T2.10.03) – Additional Traffic Signal Design Tasks - \$12,699.35

The scope of this task has been modified and the associated budget needs to be increased by \$12,699.35 for the following reasons:

Additional work in support of reducing the number of lanes along Clinton Keith Road from Whitewood Road to State Route 79 will require the following additional Tasks:

- Traffic signal at Whitewood Road will be modified.

Submittals:

- 99% & Final PS&E submittal.

Assumptions:

- Approval of the Final PS&E submittals will be achieved after addressing no more than one additional round of review comments on the 99% submittals unless additional review(s) are due to quality of the deliverables.

L. (Tasks T2.10.04) – Additional Revisions to Cost Estimate Tasks - \$18,922.42

The scope of this task has been modified and the associated budget needs to be increased by \$18,922.42 for the following reasons:

Additional work in support of reducing the number of lanes along Clinton Keith Road from Whitewood Road to State Route 79 will require the following additional Tasks:

- Revised cost estimates for this two lane alternative will need to be prepared for each package.

Submittals:

- 99% & Final PS&E submittal for each package.

Assumptions:

- Approval of the Final PS&E submittals will be achieved after addressing no more than one additional round of review comments on the 99% submittals for each package unless additional review(s) are due to quality of the deliverables.

M. (Tasks T2.10.05) – Additional Revisions to Specifications Tasks - \$28,821.56

The scope of this task has been modified and the associated budget needs to be increased by \$28,821.56 for the following reasons:

Additional work in support of reducing the number of lanes along Clinton Keith Road from Whitewood Road to State Route 79 will require the following additional Tasks:

- Current specifications will need to be updated and completed for this interim project and broken out into two separate packages. Additional changes will need to be made if they need to conform to the 2010 Specifications.

Submittals:

- 99% & Final PS&E submittal for each package.

Assumptions:

- Approval of the Final PS&E submittals will be achieved after addressing no more than one additional round of review comments on the 99% submittals for each package unless additional review(s) are due to quality of the deliverables.

N. (Tasks T2.10.HA) – Additional HydroArch Design Tasks - \$10,200.00

The scope of this task has been modified and the associated budget needs to be increased by \$10,200.00 for the following reasons:

Additional work in support of reducing the number of lanes along Clinton Keith Road from Whitewood Road to State Route 79 will require the following additional Tasks:

- HydroArch culvert at Leon Road will be modified to include a soft bottom for wetland mitigation.

Submittals:

- 99% & Final PS&E submittal.

Assumptions:

- Approval of the Final PS&E submittals will be achieved after addressing no more than one additional round of review comments on the 99% submittals unless additional review(s) are due to quality of the deliverables.

O. (Tasks T2.10.CC) – Additional Contech Design Tasks - \$20,400.00

The scope of this task has been modified and the associated budget needs to be increased by \$20,400.00 for the following reasons:

Additional work in support of reducing the number of lanes along Clinton Keith Road from Whitewood Road to State Route 79 will require the following additional Tasks:

- Wildlife Crossing structure will need to be revised to current standards.
- Solar powered lighting will be considered inside the wildlife crossing.

Submittals:

- 99% & Final PS&E submittal.

Assumptions:

- Approval of the Final PS&E submittals will be achieved after addressing no more than one additional round of review comments on the 99% submittals unless additional review(s) are due to quality of the deliverables.

P. (Tasks T2.10.06) – Additional Structure Design Tasks – \$164,788.63

The scope of this task has been modified and the associated budget needs to be increased by \$164,788.63 for the following reasons:

Additional work in support of the completion of the Final Plans, Specifications and Estimates (PS&E) for Warm Springs Creek Bridge, French Valley Creek Bridge and Clinton Keith Road Wildlife Overcrossing will include the following:

- Address / Revise design and calculations based on Final Foundation Report.
- Provide new Independent Check Design Calculations based on Load and Resistance Factor Design (LRFD). Revise the plans as necessary to conform to LRFD codes, standards and design calculations. Revise the specifications based on the latest standards. Revise the quantities and estimates based on latest plan and rates respectively.
- Revise analysis, design calculations and plans based on Caltrans Seismic Design Criteria Version 1.6 November 2010.
- Revise calculations and plans based on Caltrans Standard Plans 2010.
- Revise design calculations and plans based on the latest criteria on scour consideration while designing for earthquake loading.

Submittals:

- 99% and Final PS&E submittal.

Assumptions:

- Approval of the Final PS&E submittals will be achieved after addressing no more than one additional round of review comments on the 99% submittals unless additional review(s) are due to quality of the deliverables.
- The Design Data of the structures will remain as mentioned in the plans & calculations. It will only be revised to conform to the Load and Resistance Factor Design (LRFD).
- The structures length, width and other major features affecting the weight of the bridge will not be changed.

Q. (Tasks T2.10.07) – Traffic Analysis - \$31,323.84

The scope of this task has been modified and the associated budget needs to be increased by \$31,323.84 for the following reasons:

The traffic analysis performed by CH2M HILL in February 2004 will be revised as part of this Amendment. It is anticipated that the interim configuration of Clinton Keith between Whitewood Road and SR-79 (half of the ultimate width of the road) will accommodate traffic at

a satisfactory level of service (LOS D or better) for a period of time between the opening year and buildout (2030). However, analysis is needed to validate this assumption. The focus of the traffic analysis will be to determine how long the interim configuration will operate at LOS D or better. This analysis will help RCTD understand at what point in the future the interim configuration needs to be improved to the ultimate configuration.

The scope of the traffic analysis in this Amendment assumes the following:

- The study area will include the following study intersections:
 - Clinton Keith @ Whitewood
 - Clinton Keith @ Menifee
 - Clinton Keith @ Trois Valley
 - Clinton Keith @ Leon
 - Leon @ Max Gillis
 - Max Gillis @ SR-79
 - Clinton Keith @ Porth
 - Clinton Keith @ SR-79
- The approved 2030 traffic forecasts used in the 2004 traffic report prepared by CH2M HILL will also be used in this analysis. New traffic forecasts will not be developed as part of this analysis.
- No new traffic counts will be collected.
- Project phasing will be included in the traffic analysis.
- Peak hour signal warrant analysis will be done at each of the study intersections.
- If intersections warrant a traffic signal, additional funds will be required to finalize traffic signal design.
- Where appropriate, the 2030 forecasts will be adjusted to reflect the latest network geometry in the study area.
- A growth rate will be determined with the input of RCTD to "back-cast" 2030 volumes to determine the year in which the operations at the study intersections will deteriorate to LOS D or worse (referred to as the interim threshold year).
- Opening year, interim threshold year, and 2030 AM and PM peak hour LOS analysis will be performed at each of the study intersections.
- LOS and queuing summaries will be provided at each study intersection in each of the analysis years.

Submittals:

- 99% & Final Technical Memorandum

Assumptions:

- Approval of the Final Technical Memorandum will be achieved after addressing no more than one additional round of review comments on the 99% submittal unless additional review(s) are due to quality of the deliverables.

R. (Tasks T2.10.08) – Final Geotechnical Reports - \$97,492.22

The scope of this task has been modified and the associated budget needs to be increased by \$97,492.22 for the following reasons:

Additional work in support of the completion of the geotechnical field investigation for the Clinton Keith Road Wildlife Overcrossing will include the following:

- Perform field investigation consisting of two (2) mud rotary borings located in the middle and south end of the proposed overcrossing to supplement the single boring performed on the north end.
- Perform laboratory testing to selected soil samples.
- Revise analyses based on new boring data.
- Incorporate the new boring information into the current foundation report.

Additional work in support of the completion of the Final geotechnical report submittals for the Clinton Keith Road Geotechnical Design Report, Warm Springs Creek Bridge Foundation Report, French Valley Creek Bridge Foundation Report, and Wildlife Overcrossing Foundation Report:

- Address existing 95% geotechnical report submittal comments provided by RCTD, dated August 2006.
- Update the 95% geotechnical report submittals to reference most current versions of specifications, standard plans, design manuals, and design guidelines.
- Update the ground motion analyses/discussions within the 95% geotechnical report submittals to conform to the 2009 Caltrans Seismic Design Criteria.
- Update the pavement structural section design within the 95% Geotechnical Design Report to conform to the Caltrans Highway Design Manual, 6th Edition, updated in May 2012. Revise the pavement structural section design based on anticipated change in Traffic Index. The anticipated change is due to the reduction from two lanes of eastbound (EB) and two lanes of westbound (WB) traffic down to one lane of EB traffic and one lane of WB traffic.
- Address one additional round of review comments from RCTD.

Submittals:

- 99% & Final Geotechnical Design Report
- 99% & Final Warm Springs Creek Bridge Foundation Report
- 99% & Final French Valley Creek Bridge Foundation Report
- 99% & Final Clinton Keith Road Wildlife Overcrossing Foundation Report

Assumptions:

- Design of the structure foundations will be modified using the Load and Resistance Factor Design (LRFD). The analyses will be revised to be in accordance with LRFD.
- Revised ground motions for structures will not significantly alter the existing geotechnical analyses for peak ground acceleration (PGA), liquefaction, etc.

- All properties within the proposed right-of-way have been acquired by the County of Riverside. Therefore, access to the proposed boring locations on the south side of the Wildlife Overcrossing structure will be available without crossing the California Department of Fish and Game (CDFG) jurisdictional area.
- Permitting for the two borings within the project right-of-way will be handled through RCTD. The permit fees will be waived.
- The scheduling of the proposed borings will consider "black-out" dates for documented native wildlife mating/nesting seasons.
- No additional borings will be done as a consequence of changing to LRFD.
- The Traffic Index used for the design of the structural pavement sections will change due to the reduction from three lanes each direction to one lane in each direction.
- The format of existing log of test borings (LOTB) will not be updated to current Caltrans standard.
- Approval of the 100% geotechnical report submittals will be achieved after addressing no more than one additional round of review comments on the 99% submittals unless additional review(s) are due to quality of the deliverables.

T. (Task T2.08.01) – Breakout package for City of Murrieta at Vista Murrieta High School - \$41,418.03

The City of Murrieta asked RCTD to revise the 100% plans to include the construction of Clinton Keith Rd from Antelope Rd to the west BC of the intersection of Whitewood Rd. This required updating the plans, specifications, and estimates (PS&E). Additional design changes to the plans consisted of additional 2' width added to the north side of Clinton Keith Rd, prepared additional right of way maps for RCTD, coordinated Filterra units along the project for water quality, revised median to a 22' width, revised Stage Construction plans, and completed an internal review of Webb Associates traffic signal plans. This agreement, for additional out of scope services, was agreed upon by the City of Murrieta on 7-26-2010 and by RCTD on 7-29-2010.

U. (Task T2.SR) – Subpoena RFI regarding Anheuser Busch property - \$9,419.37

Provided all documentation needed in the subpoena request by Riverside County's attorney regarding the Anheuser Busch property.

V. (Task T2.09) – Project Phasing Feasibility Analysis - \$10,640.07

The existing budget for the Phase 2 task was used to perform out of scope services. This task included preparation of a Technical Memo that included cost estimates for additional analysis for up to 7 alternatives for phasing the project construction. Analysis was completed for both engineering and environmental changes that would occur with each of the alternatives. This agreement, for additional out of scope services, was signed and agreed upon by the County on 12-5-2011.

PHASE 3 (Bid Support)

W. (Task T3.01) - Bid Support Task - \$0

No additional funds are requested for this task.

PHASE 4 (Construction Support)

X. (Task T4.01) - Construction Support Task - \$31,709.99

The scope of this task has been included and the associated budget for this task is \$31,709.99.

This task is to include scope and budget to the contract for Phase 4, Construction Support Services for the phased projects. CH2M HILL will assist RCTD in responding to RFIs (Requests for Information) received from the construction Contractor during the construction of the project. CH2M HILL will also prepare as-built plans at the conclusion of construction. This task will assume 5 hours per week over a two year construction period and an additional 40 hours to prepare as-builts for a total of 560 hours. Additional funds to cover these hours are being requested as part of this Amendment.



COST PROPOSAL

Contract No. 02-02-005A2

Environmental and Design Support of the Clinton Keith Road Extension Project

AMENDMENT NO. 4

Task Summary

26-Sep-12

Amendment No. 4 Task Number	Task Description	Fee
A	Project Administration/Project Management	\$17,194
B	EIR Addendum	\$23,537
C	Supplemental Jurisdictional Delineation and Permitting Report	\$11,606
D	Agency Coordination for Joint Project Review and MSHCP Consistency	\$15,697
E	Permit Applications	\$12,155
F	Habitat Mitigation and Monitoring Plan for East Side of Project	\$12,676
G	Updated Cultural Studies	\$17,549
Total Phase 1		\$110,414
H	Project Administration/Project Management	\$23,989
I	Additional Roadway Design Tasks	\$74,947
J	Drainage	\$53,937
K	Traffic Signal Modification	\$12,699
L	Revised Cost Estimates	\$18,922
M	Revised Specifications	\$28,822
N	HydroArch	\$10,200
O	Contech Construction	\$20,400
P	Additional Structure Design Tasks	\$164,789
Q	Traffic Analysis	\$31,324
R	Final Geotechnical Reports	\$97,492
T	Breakout package for City of Murrieta at Vista Murrieta High School	\$41,418
U	Subpoena RFI regarding Anheuser Busch property	\$9,419
V	Project Phasing Feasibility Analysis	\$10,640
Total Phase 2		\$598,998
W	Phase 3 - Bid Support	\$0
X	Phase 4 - Construction Support	\$31,710
Total Amendment No. 4		\$741,122

MANHOURS WORKSHEET

COMPANY	SCOPE OF WORK	DATE	REVISION
CH2M HILL	Phase 1-4	8/23/2012	
PROJECT	MILESTONES/PHASE		
Clinton Keith Road Extension	Phase 1-4		

Control Task Number	CH2M HILL Task Number	Task	Project Manager	Environmental Task Leader/Task Specialist	Senior Consultant	Senior Geotech	Geotech Engineer	Senior Structural Engineer	Structural Engineer	Senior Roadway Engineer	Engineer	Junior Engineer	Environmental Planner	Assoc. Planner	CADD	Graphics / GIS	Technical Editor	Contracts	Office/ Client/ Admin	Total
PHASE 1																				
A	T1.01	Project Administration/Project Management	90																	130
B	T1.07.01	EIR Addendum		20	6					8			100			76	5		40	215
C	T1.07.02	Supplemental Jurisdictional Delineation and Permitting Report		10									64			30				104
D	T1.07.03	Agency Coordination for Joint Project Review and MSH-PCP Consistency		10									110			20				140
E	T1.07.04	Permit Applications		10									80			16				106
F	T1.07.05	Habitat Mitigation and Monitoring Plan for East Side of Project		10									74			30				114
G	T1.07.06	Updated Cultural Studies		20									105	30						155
PHASE 2																				
H	T2.10.01	Project Administration/Project Management	90																	166
I	T2.10.01	Roadway Plans	40		100					200	150				156			36	40	646
J	T2.10.02	Drainage			90						400									490
K	T2.10.03	Traffic Signal Modifications								60	100	65								125
L	T2.10.04	Revised cost estimates	10							60	100									170
M	T2.10.05	Revised specifications	10							60	200									270
N	T2.10.06	HydroArch																		0
O	T2.10.07	Context Construction																		0
P	T2.10.08	Additional Structure Design Tasks						400	540		320				240					1500
Q	T2.10.09	Traffic Analysis			30					100	140									270
R	T2.10.10	Final Geotechnical Reports			26	80	480				54			8	76	30	80	8	6	848
T	T2.08.01	Breakout package for City of Murreleta at Vista Murreleta High School		12	8					212	54									362
U	T2.08.02	Subpoena RFI regarding Arheuser Busch property			40					12		12			7				2	73
V	T2.09	Project Phasing Feasibility Analysis		4						50	8			12	24					98
PHASE 3																				
W	T3.01	Bid Support																		0
PHASE 4																				
X	T4.01	Construction Support Services	12		30			40		100	30		20							232
			252	96	300	110	480	440	540	862	1402	77	553	50	557	172	81	74	168	6,214
			Total Manhours																	

COMPANY: CH2M HILL	SCOPE OF WORK Phase 1 - 4	DATE: 8/23/2012	REV:
------------------------------	-------------------------------------	---------------------------	-------------

PROJECT: Clinton Keith Road	MILESTONE/PHASE: Phase 1-4 Summary
---------------------------------------	--

DIRECT LABOR

CLASSIFICATION	HOURS		RATE	AMOUNT
Project Manager	252	@	\$59.07	\$14,885.64
Environmental Task Leader/Tech Specialist	96	@	\$65.44	\$6,282.24
Senior Consultant	300	@	\$66.64	\$19,992.00
Senior Geotech	110	@	\$66.64	\$7,330.40
Geotech Engineer	480	@	\$41.40	\$19,872.00
Senior Structural Engineer	440	@	\$62.14	\$27,341.60
Structural Engineer	540	@	\$41.40	\$22,356.00
Senior Roadway Engineer	862	@	\$53.05	\$45,729.10
Engineer	1,402	@	\$41.40	\$58,042.80
Junior Engineer	77	@	\$32.74	\$2,520.98
Environmental Planner	553	@	\$45.42	\$25,117.26
Assoc Planner	50	@	\$35.45	\$1,772.50
CADD	557	@	\$35.24	\$19,628.68
Graphics / GIS	172	@	\$35.24	\$6,061.28
Technical Editor	81	@	\$35.15	\$2,847.15
Contracts	74	@	\$53.05	\$3,925.70
Office/ Clerical/ Admin	168	@	\$28.34	\$4,761.12
TOTAL HOURS	6,214		TOTAL DIRECT LABOR	\$288,466.45

MULTIPLIERS

ESCALATION @	1.33%	(Rate)	\$3,844.47
OVERHEAD @	114.16%	(of Total Direct Labor + Escalation)	\$333,702.15
TOTAL MULTIPLIERS			\$337,546.62

OTHER DIRE * Billed at Actual Cost *****

ITEM	QUANTITY	UNIT		UNIT COST	AMOUNT
Health & Safety Assessment	640	hr	@	\$1.55	\$992.00
Outside Repro Services	5,000	LS	@	\$1.00	\$5,000.00
Postage & Freight	30	ea	@	\$10.00	\$300.00
Mileage	1,260	miles	@	\$0.555	\$699.30
TOTAL OTHER DIRECT EXPENSES					\$6,991.30

OUTSIDE SERVICES (w/o fee)

COMPANY	LABOR	MULTIPLIER	EXPENSES	TOTAL
Critigen				\$4,624.10
HydroArch				\$10,000.00
Contech Construction				\$20,000.00
Drilling Sub				\$6,000.00
Lab Testing Sub				\$4,000.00
TOTAL OUTSIDE SERVICES				\$44,624.10

FEES

OUTSIDE SERVICES ADMIN FEE @	2.00%	(of Total Outside Services)	\$892.48
CH2M HILL @	10.00%	(of Total Direct Labor + Total Multipliers)	\$62,601.31
TOTAL FEES			\$63,493.79
TOTAL COST			\$741,122.26

COMPANY: CH2M HILL **SCOPE OF WORK** Phase 2 - Engineering & Management Tasks **DATE:** 8/23/2012 **REV:**

PROJECT: Clinton Keith Road **MILESTONE/PHASE:** Phase 2 Summary

DIRECT LABOR

CLASSIFICATION	HOURS		RATE	AMOUNT
Project Manager	150	@	\$59.07	\$8,860.50
Environmental Task Leader/Tech Specialist	16	@	\$65.44	\$1,047.04
Senior Consultant	294	@	\$66.64	\$19,592.16
Senior Geotech	80	@	\$66.64	\$5,331.20
Geotech Engineer	480	@	\$41.40	\$19,872.00
Senior Structural Engineer	400	@	\$62.14	\$24,856.00
Structural Engineer	540	@	\$41.40	\$22,356.00
Senior Roadway Engineer	754	@	\$53.05	\$39,999.70
Engineer	1,372	@	\$41.40	\$56,800.80
Junior Engineer	77	@	\$32.74	\$2,520.98
Environmental Planner	-		\$45.42	
Assoc Planner	20	@	\$35.45	\$709.00
CADD	557	@	\$35.24	\$19,628.68
Graphics / GIS	-		\$35.24	
Technical Editor	76	@	\$35.15	\$2,671.40
Contracts	74	@	\$53.05	\$3,925.70
Office/ Clerical/ Admin	128	@	\$28.34	\$3,627.52
TOTAL HOURS	5,018		TOTAL DIRECT LABOR	\$231,798.68

MULTIPLIERS

ESCALATION @	1.33%	(Rate)	\$3,085.53
OVERHEAD @	114.16%	(of Total Direct Labor + Escalation)	\$268,143.81
TOTAL MULTIPLIERS			\$271,229.34

OTHER DIRE * Billed at Actual Cost *****

ITEM	QUANTITY	UNIT		UNIT COST	AMOUNT
Health & Safety Assessment	560	hr	@	\$1.55	\$868.00
Outside Repro Services	3,333	LS	@	\$1.00	\$3,333.33
Postage & Freight	20	ea	@	\$10.00	\$200.00
Mileage	840	miles	@	\$0.555	\$466.20
TOTAL OTHER DIRECT EXPENSES					\$4,867.53

OUTSIDE SERVICES (w/o fee)

COMPANY	LABOR	MULTIPLIER	EXPENSES	TOTAL
HydroArch				\$10,000.00
Contech Construction				\$20,000.00
Drilling Sub				\$6,000.00
Lab Testing Sub				\$4,000.00
TOTAL OUTSIDE SERVICES				\$40,000.00

FEEES

OUTSIDE SERVICES ADMIN FEE @	2.00%	(of Total Outside Services)	\$800.00
CH2M HILL @	10.00%	(of Total Direct Labor + Total Multipliers)	\$50,302.80
TOTAL FEES			\$51,102.80
TOTAL COST			\$598,998.36

COMPANY: CH2M HILL	SCOPE OF WORK Phase 3 - Bid Support	DATE: 8/23/2012	REV: 1
------------------------------	---	---------------------------	------------------

PROJECT: Clinton Keith Road	MILESTONE/PHASE: Phase 3 Bid Support
---------------------------------------	--

DIRECT LABOR

CLASSIFICATION	HOURS	RATE	AMOUNT
Project Manager	-	\$59.07	
Environmental Task Leader/Tech Specialist	-	\$65.44	
Senior Consultant	-	\$66.64	
Senior Geotech	-	\$66.64	
Geotech Engineer	-	\$41.40	
Senior Structural Engineer	-	\$62.14	
Structural Engineer	-	\$41.40	
Senior Roadway Engineer	-	\$53.05	
Engineer	-	\$41.40	
Junior Engineer	-	\$32.74	
Environmental Planner	-	\$45.42	
Assoc Planner	-	\$35.45	
CADD	-	\$35.24	
Graphics / GIS	-	\$35.24	
Technical Editor	-	\$35.15	
Contracts	-	\$53.05	
Office/ Clerical/ Admin	-	\$28.34	
TOTAL HOURS	0	TOTAL DIRECT LABOR	\$0.00

MULTIPLIERS

ESCALATION @	0.00%	(Rate)	\$0.00
OVERHEAD @	114.16%	(of Total Direct Labor + Escalation)	\$0.00
TOTAL MULTIPLIERS			\$0.00

OTHER DIRE CH2M HILL

ITEM	QUANTITY	UNIT	UNIT COST	AMOUNT
TOTAL OTHER DIRECT EXPENSES				\$0.00

OUTSIDE SERVICES (w/o fee)

COMPANY	LABOR	MULTIPLIER	EXPENSES	TOTAL
TOTAL OUTSIDE SERVICES				\$0.00

FEES

OUTSIDE SERVICES ADMIN FEE @	2.00%	(of Total Outside Services)	\$0.00
CH2M HILL @	10.00%	(of Total Direct Labor + Total Multipliers)	\$0.00
TOTAL FEES			\$0.00
TOTAL COST			\$0.00

COMPANY: CH2M HILL	SCOPE OF WORK Phase 4 - Construction Support	DATE: 8/23/2012	REV: 1
------------------------------	--	---------------------------	------------------

PROJECT: Clinton Keith Road	MILESTONE/PHASE: Phase 4 Construction Support
---------------------------------------	---

DIRECT LABOR

CLASSIFICATION	HOURS		RATE	AMOUNT	
Project Manager	12	@	\$59.07	\$708.84	
Environmental Task Leader/Tech Specialist	-		\$65.44		
Senior Consultant	-		\$66.64		
Senior Geotech	30	@	\$66.64	\$1,999.20	
Geotech Engineer	-		\$41.40		
Senior Structural Engineer	40	@	\$62.14	\$2,485.60	
Structural Engineer	-		\$41.40		
Senior Roadway Engineer	100	@	\$53.05	\$5,305.00	
Engineer	30	@	\$41.40	\$1,242.00	
Junior Engineer	-		\$32.74		
Environmental Planner	20	@	\$45.42	\$908.40	
Assoc Planner	-		\$35.45		
CADD	-		\$35.24		
Graphics / GIS	-		\$35.24		
Technical Editor	-		\$35.15		
Contracts	-		\$53.05		
Office/ Clerical/ Admin	-		\$28.34		
TOTAL HOURS		232	TOTAL DIRECT LABOR		\$12,649.04

MULTIPLIERS

ESCALATION @	6.00%	(Rate)	\$758.94
OVERHEAD @	114.16%	(of Total Direct Labor + Escalation)	\$15,306.55
TOTAL MULTIPLIERS			\$16,065.50

OTHER DIRE CH2M HILL

ITEM	QUANTITY	UNIT		UNIT COST	AMOUNT
Health & Safety Assessment	80	hr	@	\$1.55	\$124.00
TOTAL OTHER DIRECT EXPENSES					\$124.00

OUTSIDE SERVICES (w/o fee)

COMPANY	LABOR	MULTIPLIER	EXPENSES	TOTAL
TOTAL OUTSIDE SERVICES				\$0.00

FEES

OUTSIDE SERVICES ADMIN FEE @	2.00%	(of Total Outside Services)	\$0.00
CH2M HILL @	10.00%	(of Total Direct Labor + Total Multipliers)	\$2,871.45
TOTAL FEES			\$2,871.45
TOTAL COST			\$31,709.99

COMPANY: CH2M HILL	SCOPE OF WORK Engineering & Management Tasks	DATE: 8/23/2012	REV:
------------------------------	--	---------------------------	-------------

PROJECT: Clinton Keith Road	MILESTONE/PHASE: Phase 1 Project Administration/Project Management
---------------------------------------	--

DIRECT LABOR

CLASSIFICATION	HOURS		RATE	AMOUNT
Project Manager	90	@	\$59.07	\$5,316.30
Environmental Task Leader/Tech Specialist			\$65.44	
Senior Consultant			\$66.64	
Senior Geotech			\$66.64	
Geotech Engineer			\$41.40	
Senior Structural Engineer			\$62.14	
Structural Engineer			\$41.40	
Senior Roadway Engineer			\$53.05	
Engineer			\$41.40	
Junior Engineer			\$32.74	
Environmental Planner			\$45.42	
Assoc Planner			\$35.45	
CADD			\$35.24	
Graphics / GIS			\$35.24	
Contracts			\$53.05	
Office/ Clerical/ Admin	40	@	\$28.34	\$1,133.60
TOTAL HOURS		130	TOTAL DIRECT LABOR	
				\$6,449.90

MULTIPLIERS

ESCALATION @	0.00%	(Rate)	\$0.00
OVERHEAD @	114.16%	(of Total Direct Labor + Escalation)	\$7,363.21
TOTAL MULTIPLIERS			\$7,363.21

OTHER DIRE * Billed at Actual Cost *****

ITEM	QUANTITY	UNIT		UNIT COST	AMOUNT
Outside Repro Services	1,667	LS	@	\$1.00	\$1,666.67
Postage & Freight	10	ea	@	\$10.00	\$100.00
Mileage	420	miles	@	\$0.555	\$233.10
TOTAL OTHER DIRECT EXPENSES					\$1,999.77

OUTSIDE SERVICES (w/o fee)

COMPANY	LABOR	MULTIPLIER	EXPENSES	TOTAL
TOTAL OUTSIDE SERVICES				\$0.00

FEES

OUTSIDE SERVICES ADMIN FEE @	2.00%	(of Total Outside Services)	\$0.00
CH2M HILL @	10.00%	(of Total Direct Labor + Total Multipliers)	\$1,381.31
TOTAL FEES			\$1,381.31
TOTAL COST			\$17,194.18

COMPANY: CH2M HILL	SCOPE OF WORK Engineering & Management Tasks	DATE: 8/23/2012	REV:
------------------------------	--	---------------------------	-------------

PROJECT: Clinton Keith Road	MILESTONE/PHASE: Phase 1 EIR Addendum
---------------------------------------	---

DIRECT LABOR

CLASSIFICATION	HOURS		RATE	AMOUNT
Project Manager			\$59.07	
Environmental Task Leader/Tech Specialist	20	@	\$65.44	\$1,308.80
Senior Consultant	6	@	\$66.64	\$399.84
Senior Geotech			\$66.64	
Geotech Engineer			\$41.40	
Senior Structural Engineer			\$62.14	
Structural Engineer			\$41.40	
Senior Roadway Engineer	8	@	\$53.05	\$424.40
Engineer			\$41.40	
Junior Engineer			\$32.74	
Environmental Planner	100	@	\$45.42	\$4,542.00
Assoc Planner			\$35.45	
CADD			\$35.24	
Graphics / GIS	76	@	\$35.24	\$2,678.24
Contracts			\$53.05	
Office/ Clerical/ Admin			\$28.34	
TOTAL HOURS		215	TOTAL DIRECT LABOR	
				\$9,529.03

MULTIPLIERS

ESCALATION @	0.00%	(Rate)	\$0.00
OVERHEAD @	114.16%	(of Total Direct Labor + Escalation)	\$10,878.34
TOTAL MULTIPLIERS			\$10,878.34

OTHER DIRE CH2M HILL

ITEM	QUANTITY	UNIT	UNIT COST	AMOUNT
TOTAL OTHER DIRECT EXPENSES				\$0.00

OUTSIDE SERVICES (w/o fee)

COMPANY	LABOR	MULTIPLIER	EXPENSES	TOTAL
Critigen				\$1,067.10
TOTAL OUTSIDE SERVICES				\$1,067.10

FEES

OUTSIDE SERVICES ADMIN FEE @	2.00%	(of Total Outside Services)	\$21.34
CH2M HILL @	10.00%	(of Total Direct Labor + Total Multipliers)	\$2,040.74
TOTAL FEES			\$2,062.08
TOTAL COST			\$23,536.55

COMPANY: CH2M HILL	SCOPE OF WORK Engineering & Management Tasks	DATE: 8/23/2012	REV:
------------------------------	--	---------------------------	-------------

PROJECT: Clinton Keith Road	MILESTONE/PHASE: Phase 1 Agency Coordination for Joint Project Review and MSHCP Consistency
---------------------------------------	---

DIRECT LABOR

CLASSIFICATION	HOURS		RATE	AMOUNT
Project Manager			\$59.07	
Environmental Task Leader/Tech Specialist	10	@	\$65.44	\$654.40
Senior Consultant			\$66.64	
Senior Geotech			\$66.64	
Geotech Engineer			\$41.40	
Senior Structural Engineer			\$62.14	
Structural Engineer			\$41.40	
Senior Roadway Engineer			\$53.05	
Engineer			\$41.40	
Junior Engineer			\$32.74	
Environmental Planner	110	@	\$45.42	\$4,996.20
Assoc Planner			\$35.45	
CADD			\$35.24	
Graphics / GIS	20	@	\$35.24	\$704.80
Contracts			\$53.05	
Office/ Clerical/ Admin			\$28.34	
TOTAL HOURS		140	TOTAL DIRECT LABOR	
				\$6,355.40

MULTIPLIERS

ESCALATION @	0.00%	(Rate)	\$0.00
OVERHEAD @	114.16%	(of Total Direct Labor + Escalation)	\$7,255.32
TOTAL MULTIPLIERS			\$7,255.32

OTHER DIRE CH2M HILL

ITEM	QUANTITY	UNIT	UNIT COST	AMOUNT
TOTAL OTHER DIRECT EXPENSES				\$0.00

OUTSIDE SERVICES (w/o fee)

COMPANY	LABOR	MULTIPLIER	EXPENSES	TOTAL
Critigen				\$711.40
TOTAL OUTSIDE SERVICES				\$711.40

FEES

OUTSIDE SERVICES ADMIN FEE @	2.00%	(of Total Outside Services)	\$14.23
CH2M HILL @	10.00%	(of Total Direct Labor + Total Multipliers)	\$1,361.07
TOTAL FEES			\$1,375.30
TOTAL COST			\$15,697.43

COMPANY: CH2M HILL	SCOPE OF WORK Engineering & Management Tasks	DATE: 8/23/2012	REV:
------------------------------	--	---------------------------	-------------

PROJECT: Clinton Keith Road	MILESTONE/PHASE: Phase 1 Permit Applications
---------------------------------------	--

DIRECT LABOR

CLASSIFICATION	HOURS		RATE	AMOUNT
Project Manager			\$59.07	
Environmental Task Leader/Tech Specialist	10	@	\$65.44	\$654.40
Senior Consultant			\$66.64	
Senior Geotech			\$66.64	
Geotech Engineer			\$41.40	
Senior Structural Engineer			\$62.14	
Structural Engineer			\$41.40	
Senior Roadway Engineer			\$53.05	
Engineer			\$41.40	
Junior Engineer			\$32.74	
Environmental Planner	80	@	\$45.42	\$3,633.60
Assoc Planner			\$35.45	
CADD			\$35.24	
Graphics / GIS	16	@	\$35.24	\$563.84
Contracts			\$53.05	
Office/ Clerical/ Admin			\$28.34	
TOTAL HOURS				
	106			
			TOTAL DIRECT LABOR	\$4,851.84

MULTIPLIERS

ESCALATION @	0.00%	(Rate)	\$0.00
OVERHEAD @	114.16%	(of Total Direct Labor + Escalation)	\$5,538.86
TOTAL MULTIPLIERS			\$5,538.86

OTHER DIRE CH2M HILL

ITEM	QUANTITY	UNIT	UNIT COST	AMOUNT
TOTAL OTHER DIRECT EXPENSES				\$0.00

OUTSIDE SERVICES (w/o fee)

COMPANY	LABOR	MULTIPLIER	EXPENSES	TOTAL
Critigen				\$711.40
TOTAL OUTSIDE SERVICES				\$711.40

FEES

OUTSIDE SERVICES ADMIN FEE @	2.00%	(of Total Outside Services)	\$14.23
CH2M HILL @	10.00%	(of Total Direct Labor + Total Multipliers)	\$1,039.07
TOTAL FEES			\$1,053.30
TOTAL COST			\$12,155.40

COMPANY: CH2M HILL	SCOPE OF WORK Engineering & Management Tasks	DATE: 8/23/2012	REV:
------------------------------	--	---------------------------	-------------

PROJECT: Clinton Keith Road	MILESTONE/PHASE: Phase 1 Habitat Mitigation and Monitoring Plan for East Side of Project
---------------------------------------	---

DIRECT LABOR

CLASSIFICATION	HOURS	RATE	AMOUNT
Project Manager		\$59.07	
Environmental Task Leader/Tech Specialist	10	@	\$65.44
Senior Consultant		\$66.64	
Senior Geotech		\$66.64	
Geotech Engineer		\$41.40	
Senior Structural Engineer		\$62.14	
Structural Engineer		\$41.40	
Senior Roadway Engineer		\$53.05	
Engineer		\$41.40	
Junior Engineer		\$32.74	
Environmental Planner	74	@	\$45.42
Assoc Planner		\$35.45	
CADD		\$35.24	
Graphics / GIS	30	@	\$35.24
Contracts		\$53.05	
Office/ Clerical/ Admin		\$28.34	
TOTAL HOURS		114	
			TOTAL DIRECT LABOR
			\$5,072.68

MULTIPLIERS

ESCALATION @	0.00%	(Rate)	\$0.00
OVERHEAD @	114.16%	(of Total Direct Labor + Escalation)	\$5,790.97
TOTAL MULTIPLIERS			\$5,790.97

OTHER DIRE CH2M HILL

ITEM	QUANTITY	UNIT	UNIT COST	AMOUNT
TOTAL OTHER DIRECT EXPENSES				\$0.00

OUTSIDE SERVICES (w/o fee)

COMPANY	LABOR	MULTIPLIER	EXPENSES	TOTAL
Critigen				\$711.40
TOTAL OUTSIDE SERVICES				\$711.40

FEES

OUTSIDE SERVICES ADMIN FEE @	2.00%	(of Total Outside Services)	\$14.23
CH2M HILL @	10.00%	(of Total Direct Labor + Total Multipliers)	\$1,086.37
TOTAL FEES			\$1,100.59
TOTAL COST			\$12,675.64

COMPANY: CH2M HILL	SCOPE OF WORK Engineering & Management Tasks	DATE: 8/23/2012	REV:
------------------------------	--	---------------------------	-------------

PROJECT: Clinton Keith Road	MILESTONE/PHASE: Phase 1 Updated Cultural Studies
---------------------------------------	---

DIRECT LABOR

CLASSIFICATION	HOURS		RATE	AMOUNT
Project Manager			\$59.07	
Environmental Task Leader/Tech Specialist	20	@	\$65.44	\$1,308.80
Senior Consultant			\$66.64	
Senior Geotech			\$66.64	
Geotech Engineer			\$41.40	
Senior Structural Engineer			\$62.14	
Structural Engineer			\$41.40	
Senior Roadway Engineer			\$53.05	
Engineer			\$41.40	
Junior Engineer		@	\$32.74	
Environmental Planner	105	@	\$45.42	\$4,769.10
Assoc Planner	30	@	\$35.45	\$1,063.50
CADD			\$35.24	
Graphics / GIS			\$35.24	
Contracts			\$53.05	
Office/ Clerical/ Admin			\$28.34	
TOTAL HOURS		155	TOTAL DIRECT LABOR	
				\$7,141.40

MULTIPLIERS

ESCALATION @	0.00%	(Rate)	\$0.00
OVERHEAD @	114.16%	(of Total Direct Labor + Escalation)	\$8,152.62
TOTAL MULTIPLIERS			\$8,152.62

OTHER DIRE CH2M HILL

ITEM	QUANTITY	UNIT	UNIT COST	AMOUNT
TOTAL OTHER DIRECT EXPENSES				\$0.00

OUTSIDE SERVICES (w/o fee)

COMPANY	LABOR	MULTIPLIER	EXPENSES	TOTAL
Critigen				\$711.40
TOTAL OUTSIDE SERVICES				\$711.40

FEEES

OUTSIDE SERVICES ADMIN FEE @	2.00%	(of Total Outside Services)	\$14.23
CH2M HILL @	10.00%	(of Total Direct Labor + Total Multipliers)	\$1,529.40
TOTAL FEES			\$1,543.63
TOTAL COST			\$17,549.05

COMPANY: CH2M HILL	SCOPE OF WORK Engineering & Management Tasks	DATE: 8/23/2012	REV:
------------------------------	--	---------------------------	-------------

PROJECT: Clinton Keith Road	MILESTONE/PHASE: Phase 2 Project Administration/Project Management
---------------------------------------	--

DIRECT LABOR

CLASSIFICATION	HOURS		RATE	AMOUNT
Project Manager	90	@	\$59.07	\$5,316.30
Environmental Task Leader/Tech Specialist			\$65.44	
Senior Consultant			\$66.64	
Senior Geotech			\$66.64	
Geotech Engineer			\$41.40	
Senior Structural Engineer			\$62.14	
Structural Engineer			\$41.40	
Senior Roadway Engineer			\$53.05	
Engineer			\$41.40	
Junior Engineer			\$32.74	
Environmental Planner			\$45.42	
Assoc Planner			\$35.45	
CADD			\$35.24	
Graphics / GIS			\$35.24	
Contracts	36	@	\$53.05	\$1,909.80
Office/ Clerical/ Admin	40	@	\$28.34	\$1,133.60
TOTAL HOURS		166	TOTAL DIRECT LABOR	
				\$8,359.70

MULTIPLIERS

ESCALATION @	1.50%	(Rate)	\$125.40
OVERHEAD @	114.16%	(of Total Direct Labor + Escalation)	\$9,686.59
TOTAL MULTIPLIERS			\$9,811.98

OTHER DIRE * Billed at Actual Cost *****

ITEM	QUANTITY	UNIT	UNIT COST	AMOUNT
Health & Safety Assessment	-	hr	\$1.55	
Outside Repro Services	3,333	LS @	\$1.00	\$3,333.33
Postage & Freight	20	ea @	\$10.00	\$200.00
Mileage	840	miles @	\$0.555	\$466.20
TOTAL OTHER DIRECT EXPENSES				\$3,999.53

OUTSIDE SERVICES (w/o fee)

COMPANY	LABOR	MULTIPLIER	EXPENSES	TOTAL
TOTAL OUTSIDE SERVICES				\$0.00

FEES

OUTSIDE SERVICES ADMIN FEE @	2.00%	(of Total Outside Services)	\$0.00
CH2M HILL @	10.00%	(of Total Direct Labor + Total Multipliers)	\$1,817.17
TOTAL FEES			\$1,817.17
TOTAL COST			\$23,988.38

COMPANY:
CH2M HILL

SCOPE OF WORK
Additional Roadway Design Tasks

DATE:
8/23/2012

REV:

PROJECT:
Clinton Keith Road

MILESTONE/PHASE: Phase 2
Roadway Plans

DIRECT LABOR

CLASSIFICATION	HOURS		RATE	AMOUNT
Project Manager	40	@	\$59.07	\$2,362.80
Environmental Task Leader/Tech Specialist			\$65.44	
Senior Consultant	100	@	\$66.64	\$6,664.00
Senior Geotech			\$66.64	
Geotech Engineer			\$41.40	
Senior Structural Engineer			\$62.14	
Structural Engineer			\$41.40	
Senior Roadway Engineer	200	@	\$53.05	\$10,610.00
Engineer	150	@	\$41.40	\$6,210.00
Junior Engineer			\$32.74	
Environmental Planner			\$45.42	
Assoc Planner			\$35.45	
CADD	156	@	\$35.24	\$5,497.44
Graphics / GIS			\$35.24	
Contracts			\$53.05	
Office/ Clerical/ Admin			\$28.34	
TOTAL HOURS				646
			TOTAL DIRECT LABOR	\$31,344.24

MULTIPLIERS

ESCALATION @	1.50%	(Rate)	\$470.16
OVERHEAD @	114.16%	(of Total Direct Labor + Escalation)	\$36,319.32
TOTAL MULTIPLIERS			\$36,789.49

OTHER DIRE CH2M HILL

ITEM	QUANTITY	UNIT	UNIT COST	AMOUNT
TOTAL OTHER DIRECT EXPENSES				\$0.00

OUTSIDE SERVICES (w/o fee)

COMPANY	LABOR	MULTIPLIER	EXPENSES	TOTAL
TOTAL OUTSIDE SERVICES				\$0.00

FEEES

OUTSIDE SERVICES ADMIN FEE @	2.00%	(of Total Outside Services)	\$0.00
CH2M HILL @	10.00%	(of Total Direct Labor + Total Multipliers)	\$6,813.37
TOTAL FEES			\$6,813.37
TOTAL COST			\$74,947.10

COMPANY: CH2M HILL **SCOPE OF WORK:** Additional Roadway Design Tasks **DATE:** 8/23/2012 **REV:**

PROJECT: Clinton Keith Road **MILESTONE/PHASE:** Phase 2 Drainage

DIRECT LABOR

CLASSIFICATION	HOURS		RATE	AMOUNT
Project Manager			\$59.07	
Environmental Task Leader/Tech Specialist			\$65.44	
Senior Consultant	90	@	\$66.64	\$5,997.60
Senior Geotech			\$66.64	
Geotech Engineer			\$41.40	
Senior Structural Engineer			\$62.14	
Structural Engineer			\$41.40	
Senior Roadway Engineer			\$53.05	
Engineer	400	@	\$41.40	\$16,560.00
Junior Engineer			\$32.74	
Environmental Planner			\$45.42	
Assoc Planner			\$35.45	
CADD			\$35.24	
Graphics / GIS			\$35.24	
Contracts			\$53.05	
Office/ Clerical/ Admin			\$28.34	
TOTAL HOURS		490	TOTAL DIRECT LABOR	
				\$22,557.60

MULTIPLIERS

ESCALATION @	1.50%	(Rate)	\$338.36
OVERHEAD @	114.16%	(of Total Direct Labor + Escalation)	\$26,138.03
TOTAL MULTIPLIERS			\$26,476.40

OTHER DIRE CH2M HILL

ITEM	QUANTITY	UNIT	UNIT COST	AMOUNT
TOTAL OTHER DIRECT EXPENSES				\$0.00

OUTSIDE SERVICES (w/o fee)

COMPANY	LABOR	MULTIPLIER	EXPENSES	TOTAL
TOTAL OUTSIDE SERVICES				\$0.00

FEES

OUTSIDE SERVICES ADMIN FEE @	2.00%	(of Total Outside Services)	\$0.00
CH2M HILL @	10.00%	(of Total Direct Labor + Total Multipliers)	\$4,903.40
TOTAL FEES			\$4,903.40
TOTAL COST			\$53,937.40

COMPANY:
CH2M HILL

SCOPE OF WORK
Additional Roadway Design Tasks

DATE:
8/23/2012

REV:

PROJECT:
Clinton Keith Road

MILESTONE/PHASE: Phase 2
Traffic Signal Modifications

DIRECT LABOR

CLASSIFICATION	HOURS	RATE	AMOUNT
Project Manager		\$59.07	
Environmental Task Leader/Tech Specialist		\$65.44	
Senior Consultant		\$66.64	
Senior Geotech		\$66.64	
Geotech Engineer		\$41.40	
Senior Structural Engineer		\$62.14	
Structural Engineer		\$41.40	
Senior Roadway Engineer	60	@ \$53.05	\$3,183.00
Engineer		\$41.40	
Junior Engineer	65	@ \$32.74	\$2,128.10
Environmental Planner		\$45.42	
Assoc Planner		\$35.45	
CADD		\$35.24	
Graphics / GIS		\$35.24	
Contracts		\$53.05	
Office/ Clerical/ Admin		\$28.34	
TOTAL HOURS		125	
TOTAL DIRECT LABOR			\$5,311.10

MULTIPLIERS

ESCALATION @	1.50%	(Rate)	\$79.67
OVERHEAD @	114.16%	(of Total Direct Labor + Escalation)	\$6,154.10
TOTAL MULTIPLIERS			\$6,233.77

OTHER DIRE CH2M HILL

ITEM	QUANTITY	UNIT	UNIT COST	AMOUNT
TOTAL OTHER DIRECT EXPENSES				\$0.00

OUTSIDE SERVICES (w/o fee)

COMPANY	LABOR	MULTIPLIER	EXPENSES	TOTAL
TOTAL OUTSIDE SERVICES				\$0.00

FEEES

OUTSIDE SERVICES ADMIN FEE @	2.00%	(of Total Outside Services)	\$0.00
CH2M HILL @	10.00%	(of Total Direct Labor + Total Multipliers)	\$1,154.49
TOTAL FEES			\$1,154.49
TOTAL COST			\$12,699.35

COMPANY: CH2M HILL	SCOPE OF WORK Additional Roadway Design Tasks	DATE: 8/23/2012	REV:
------------------------------	---	---------------------------	-------------

PROJECT: Clinton Keith Road	MILESTONE/PHASE: Phase 2 Revised cost estimates
---------------------------------------	---

DIRECT LABOR

CLASSIFICATION	HOURS		RATE	AMOUNT
Project Manager	10	@	\$59.07	\$590.70
Environmental Task Leader/Tech Specialist			\$65.44	
Senior Consultant			\$66.64	
Senior Geotech			\$66.64	
Geotech Engineer			\$41.40	
Senior Structural Engineer			\$62.14	
Structural Engineer			\$41.40	
Senior Roadway Engineer	60	@	\$53.05	\$3,183.00
Engineer	100	@	\$41.40	\$4,140.00
Junior Engineer			\$32.74	
Environmental Planner			\$45.42	
Assoc Planner			\$35.45	
CADD			\$35.24	
Graphics / GIS			\$35.24	
Contracts			\$53.05	
Office/ Clerical/ Admin			\$28.34	
TOTAL HOURS		170	TOTAL DIRECT LABOR	
				\$7,913.70

MULTIPLIERS

ESCALATION @	1.50%	(Rate)	\$118.71
OVERHEAD @	114.16%	(of Total Direct Labor + Escalation)	\$9,169.79
TOTAL MULTIPLIERS			\$9,288.50

OTHER DIRE CH2M HILL

ITEM	QUANTITY	UNIT	UNIT COST	AMOUNT
TOTAL OTHER DIRECT EXPENSES				\$0.00

OUTSIDE SERVICES (w/o fee)

COMPANY	LABOR	MULTIPLIER	EXPENSES	TOTAL
TOTAL OUTSIDE SERVICES				\$0.00

FEEES

OUTSIDE SERVICES ADMIN FEE @	2.00%	(of Total Outside Services)	\$0.00
CH2M HILL @	10.00%	(of Total Direct Labor + Total Multipliers)	\$1,720.22
TOTAL FEES			\$1,720.22
TOTAL COST			\$18,922.42

COMPANY:
CH2M HILL

SCOPE OF WORK
Additional Roadway Design Tasks

DATE:
8/23/2012

REV:

PROJECT:
Clinton Keith Road

MILESTONE/PHASE: Phase 2
Revised specifications

DIRECT LABOR

CLASSIFICATION	HOURS		RATE	AMOUNT
Project Manager	10	@	\$59.07	\$590.70
Environmental Task Leader/Tech Specialist			\$65.44	
Senior Consultant			\$66.64	
Senior Geotech			\$66.64	
Geotech Engineer			\$41.40	
Senior Structural Engineer			\$62.14	
Structural Engineer			\$41.40	
Senior Roadway Engineer	60	@	\$53.05	\$3,183.00
Engineer	200	@	\$41.40	\$8,280.00
Junior Engineer			\$32.74	
Environmental Planner			\$45.42	
Assoc Planner			\$35.45	
CADD			\$35.24	
Graphics / GIS			\$35.24	
Contracts			\$53.05	
Office/ Clerical/ Admin			\$28.34	
TOTAL HOURS		270	TOTAL DIRECT LABOR	
				\$12,053.70

MULTIPLIERS

ESCALATION @	1.50%	(Rate)	\$180.81
OVERHEAD @	114.16%	(of Total Direct Labor + Escalation)	\$13,966.91
TOTAL MULTIPLIERS			\$14,147.72

OTHER DIRE CH2M HILL

ITEM	QUANTITY	UNIT	UNIT COST	AMOUNT
TOTAL OTHER DIRECT EXPENSES				\$0.00

OUTSIDE SERVICES (w/o fee)

COMPANY	LABOR	MULTIPLIER	EXPENSES	TOTAL
TOTAL OUTSIDE SERVICES				\$0.00

FEEES

OUTSIDE SERVICES ADMIN FEE @	2.00%	(of Total Outside Services)	\$0.00
CH2M HILL @	10.00%	(of Total Direct Labor + Total Multipliers)	\$2,620.14
TOTAL FEES			\$2,620.14
TOTAL COST			\$28,821.56

COMPANY:
CH2M HILL

SCOPE OF WORK
Additional Roadway Design Tasks

DATE:
8/23/2012

REV:

PROJECT:
Clinton Keith Road

MILESTONE/PHASE: Phase 2
HydroArch

DIRECT LABOR

CLASSIFICATION	HOURS	RATE	AMOUNT
Project Manager		\$59.07	
Environmental Task Leader/Tech Specialist		\$65.44	
Senior Consultant		\$66.64	
Senior Geotech		\$66.64	
Geotech Engineer		\$41.40	
Senior Structural Engineer		\$62.14	
Structural Engineer		\$41.40	
Senior Roadway Engineer		\$53.05	
Engineer		\$41.40	
Junior Engineer		\$32.74	
Environmental Planner		\$45.42	
Assoc Planner		\$35.45	
CADD		\$35.24	
Graphics / GIS		\$35.24	
Contracts		\$53.05	
Office/ Clerical/ Admin		\$28.34	
TOTAL HOURS	0	TOTAL DIRECT LABOR	\$0.00

MULTIPLIERS

ESCALATION @	1.50%	(Rate)	\$0.00
OVERHEAD @	114.16%	(of Total Direct Labor + Escalation)	\$0.00
TOTAL MULTIPLIERS			\$0.00

OTHER DIRE CH2M HILL

ITEM	QUANTITY	UNIT	UNIT COST	AMOUNT
TOTAL OTHER DIRECT EXPENSES				\$0.00

OUTSIDE SERVICES (w/o fee)

COMPANY	LABOR	MULTIPLIER	EXPENSES	TOTAL
HydroArch				\$10,000.00
TOTAL OUTSIDE SERVICES				\$10,000.00

FEEES

OUTSIDE SERVICES ADMIN FEE @	2.00%	(of Total Outside Services)	\$200.00
CH2M HILL @	10.00%	(of Total Direct Labor + Total Multipliers)	\$0.00
TOTAL FEES			\$200.00
TOTAL COST			\$10,200.00

COMPANY: CH2M HILL	SCOPE OF WORK Additional Roadway Design Tasks	DATE: 8/23/2012	REV:
------------------------------	---	---------------------------	-------------

PROJECT: Clinton Keith Road	MILESTONE/PHASE: Phase 2 Contech Construction
---------------------------------------	---

DIRECT LABOR

CLASSIFICATION	HOURS	RATE	AMOUNT
Project Manager		\$59.07	
Environmental Task Leader/Tech Specialist		\$65.44	
Senior Consultant		\$66.64	
Senior Geotech		\$66.64	
Geotech Engineer		\$41.40	
Senior Structural Engineer		\$62.14	
Structural Engineer		\$41.40	
Senior Roadway Engineer		\$53.05	
Engineer		\$41.40	
Junior Engineer		\$32.74	
Environmental Planner		\$45.42	
Assoc Planner		\$35.45	
CADD		\$35.24	
Graphics / GIS		\$35.24	
Contracts		\$53.05	
Office/ Clerical/ Admin		\$28.34	
TOTAL HOURS	0	TOTAL DIRECT LABOR	\$0.00

MULTIPLIERS

ESCALATION @	1.50%	(Rate)	\$0.00
OVERHEAD @	114.16%	(of Total Direct Labor + Escalation)	\$0.00
TOTAL MULTIPLIERS			\$0.00

OTHER DIRE CH2M HILL

ITEM	QUANTITY	UNIT	UNIT COST	AMOUNT
TOTAL OTHER DIRECT EXPENSES				\$0.00

OUTSIDE SERVICES (w/o fee)

COMPANY	LABOR	MULTIPLIER	EXPENSES	TOTAL
Contech Construction				\$20,000.00
TOTAL OUTSIDE SERVICES				\$20,000.00

FEEES

OUTSIDE SERVICES ADMIN FEE @	2.00%	(of Total Outside Services)	\$400.00
CH2M HILL @	10.00%	(of Total Direct Labor + Total Multipliers)	\$0.00
TOTAL FEES			\$400.00
TOTAL COST			\$20,400.00

COMPANY:
CH2M HILL

SCOPE OF WORK
Additional Structure Design Tasks

DATE:
8/23/2012

REV:

PROJECT:
Clinton Keith Road

MILESTONE/PHASE: Phase 2
Additional Structure Design Tasks

DIRECT LABOR

CLASSIFICATION	HOURS		RATE	AMOUNT
Project Manager			\$59.07	
Environmental Task Leader/Tech Specialist			\$65.44	
Senior Consultant			\$66.64	
Senior Geotech			\$66.64	
Geotech Engineer			\$41.40	
Senior Structural Engineer	400	@	\$62.14	\$24,856.00
Structural Engineer	540	@	\$41.40	\$22,356.00
Senior Roadway Engineer			\$53.05	
Engineer	320	@	\$41.40	\$13,248.00
Junior Engineer			\$32.74	
Environmental Planner			\$45.42	
Assoc Planner			\$35.45	
CADD	240	@	\$35.24	\$8,457.60
Graphics / GIS			\$35.24	
Contracts			\$53.05	
Office/ Clerical/ Admin			\$28.34	
TOTAL HOURS		1500	TOTAL DIRECT LABOR	
				\$68,917.60

MULTIPLIERS

ESCALATION @	1.50%	(Rate)	\$1,033.76
OVERHEAD @	114.16%	(of Total Direct Labor + Escalation)	\$79,856.48
TOTAL MULTIPLIERS			\$80,890.24

OTHER DIRE CH2M HILL

ITEM	QUANTITY	UNIT	UNIT COST	AMOUNT
TOTAL OTHER DIRECT EXPENSES				\$0.00

OUTSIDE SERVICES (w/o fee)

COMPANY	LABOR	MULTIPLIER	EXPENSES	TOTAL
TOTAL OUTSIDE SERVICES				\$0.00

FEES

OUTSIDE SERVICES ADMIN FEE @	2.00%	(of Total Outside Services)	\$0.00
CH2M HILL @	10.00%	(of Total Direct Labor + Total Multipliers)	\$14,980.78
TOTAL FEES			\$14,980.78
TOTAL COST			\$164,788.63

COMPANY: CH2M HILL	SCOPE OF WORK Traffic Analysis	DATE: 8/23/2012	REV:
------------------------------	--	---------------------------	-------------

PROJECT: Clinton Keith Road	MILESTONE/PHASE: Phase 2 Traffic Analysis
---------------------------------------	---

DIRECT LABOR

CLASSIFICATION	HOURS		RATE	AMOUNT
Project Manager			\$59.07	
Environmental Task Leader/Tech Specialist			\$65.44	
Senior Consultant	30	@	\$66.64	\$1,999.20
Senior Geotech			\$66.64	
Geotech Engineer			\$41.40	
Senior Structural Engineer			\$62.14	
Structural Engineer			\$41.40	
Senior Roadway Engineer	100	@	\$53.05	\$5,305.00
Engineer	140	@	\$41.40	\$5,796.00
Junior Engineer			\$32.74	
Environmental Planner			\$45.42	
Assoc Planner			\$35.45	
CADD			\$35.24	
Graphics / GIS			\$35.24	
Contracts			\$53.05	
Office/ Clerical/ Admin			\$28.34	
TOTAL HOURS		270	TOTAL DIRECT LABOR	
				\$13,100.20

MULTIPLIERS

ESCALATION @	1.50%	(Rate)	\$196.50
OVERHEAD @	114.16%	(of Total Direct Labor + Escalation)	\$15,179.52
TOTAL MULTIPLIERS			\$15,376.02

OTHER DIRE CH2M HILL

ITEM	QUANTITY	UNIT	UNIT COST	AMOUNT
TOTAL OTHER DIRECT EXPENSES				\$0.00

OUTSIDE SERVICES (w/o fee)

COMPANY	LABOR	MULTIPLIER	EXPENSES	TOTAL
TOTAL OUTSIDE SERVICES				\$0.00

FEEs

OUTSIDE SERVICES ADMIN FEE @	2.00%	(of Total Outside Services)	\$0.00
CH2M HILL @	10.00%	(of Total Direct Labor + Total Multipliers)	\$2,847.62
TOTAL FEES			\$2,847.62
TOTAL COST			\$31,323.84

COMPANY: CH2M HILL	SCOPE OF WORK Phase 2 - Breakout package for City of Murrieta at Vista Murrieta High School	DATE: 8/23/2012	REV:
------------------------------	---	---------------------------	-------------

PROJECT: Clinton Keith Road	MILESTONE/PHASE: Phase 2 Breakout package for City of Murrieta at Vista Murrieta High School
---------------------------------------	--

DIRECT LABOR

CLASSIFICATION	HOURS		RATE	AMOUNT
Project Manager			\$59.07	
Environmental Task Leader/Tech Specialist	12	@	\$65.44	\$785.28
Senior Consultant	8	@	\$66.64	\$533.12
Senior Geotech			\$66.64	
Geotech Engineer			\$41.40	
Senior Structural Engineer			\$62.14	
Engineer	54	@	\$41.40	\$2,235.60
Junior Engineer			\$32.74	
Environmental Planner			\$45.42	
Assoc Planner	8	@	\$35.45	\$283.60
CADD	54	@	\$35.24	\$1,902.96
Office/ Clerical/ Admin	6	@	\$28.34	\$170.04
TOTAL HOURS		362		
			TOTAL DIRECT LABOR	\$17,581.60

MULTIPLIERS

ESCALATION @	0.00%	(Rate)	\$0.00
OVERHEAD @	114.16%	(of Total Direct Labor + Escalation)	\$20,071.15
TOTAL MULTIPLIERS			\$20,071.15

OTHER DIRE CH2M HILL

ITEM	QUANTITY	UNIT	UNIT COST	AMOUNT
TOTAL OTHER DIRECT EXPENSES				\$0.00

OUTSIDE SERVICES (w/o fee)

COMPANY	LABOR	MULTIPLIER	EXPENSES	TOTAL
TOTAL OUTSIDE SERVICES				\$0.00

FEES

OUTSIDE SERVICES ADMIN FEE @	2.00%	(of Total Outside Services)	\$0.00
CH2M HILL @	10.00%	(of Total Direct Labor + Total Multipliers)	\$3,765.28
TOTAL FEES			\$3,765.28
TOTAL COST			\$41,418.03

COMPANY: CH2M HILL	SCOPE OF WORK Phase 2 - Subpoena RFI regarding Anheuser Busch property	DATE: 8/23/2012	REV:
------------------------------	--	---------------------------	-------------

PROJECT: Clinton Keith Road	MILESTONE/PHASE: Phase 1 Subpoena RFI regarding Anheuser Busch property
---------------------------------------	---

DIRECT LABOR

CLASSIFICATION	HOURS		RATE	AMOUNT
Project Manager			\$59.07	
Environmental Task Leader/Tech Specialist			\$65.44	
Senior Consultant	40	@	\$66.64	\$2,665.60
Senior Geotech			\$66.64	
Geotech Engineer			\$41.40	
Senior Structural Engineer			\$62.14	
Structural Engineer			\$41.40	
Senior Roadway Engineer	12	@	\$53.05	\$636.60
Engineer			\$41.40	
Junior Engineer	12	@	\$32.74	\$392.88
Environmental Planner			\$45.42	
Assoc Planner			\$35.45	
CADD	7	@	\$35.24	\$246.68
Graphics / GIS			\$35.24	
Contracts			\$53.05	
Office/ Clerical/ Admin	2	@	\$28.34	\$56.68
TOTAL HOURS		73	TOTAL DIRECT LABOR	
				\$3,998.44

MULTIPLIERS

ESCALATION @	0.00%	(Rate)	\$0.00
OVERHEAD @	114.16%	(of Total Direct Labor + Escalation)	\$4,564.62
TOTAL MULTIPLIERS			\$4,564.62

OTHER DIRE CH2M HILL

ITEM	QUANTITY	UNIT	UNIT COST	AMOUNT
TOTAL OTHER DIRECT EXPENSES				\$0.00

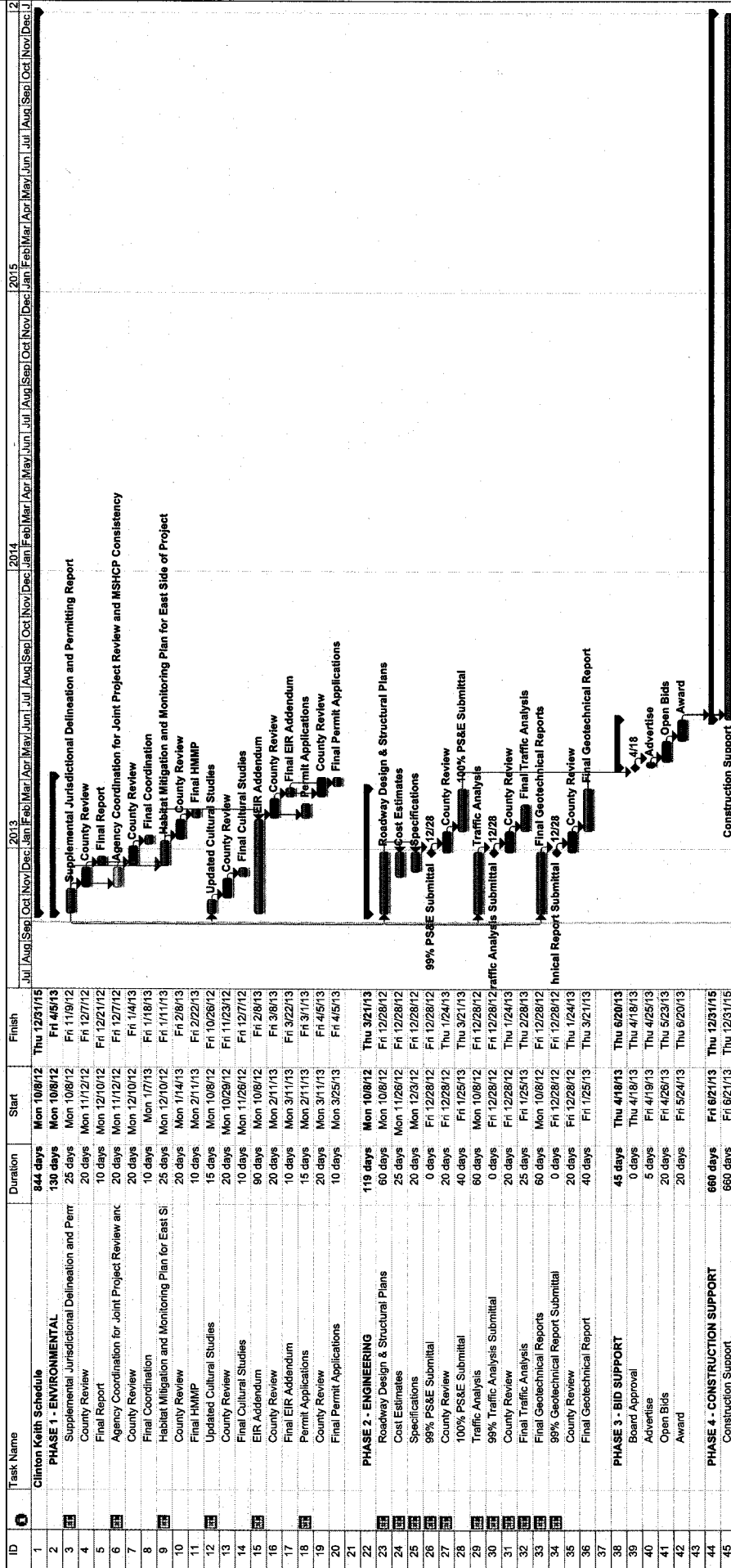
OUTSIDE SERVICES (w/o fee)

COMPANY	LABOR	MULTIPLIER	EXPENSES	TOTAL
TOTAL OUTSIDE SERVICES				\$0.00

FEES

OUTSIDE SERVICES ADMIN FEE @	2.00%	(of Total Outside Services)	\$0.00
CH2M HILL @	10.00%	(of Total Direct Labor + Total Multipliers)	\$856.31
TOTAL FEES			\$856.31
TOTAL COST			\$9,419.37

Clinton Keith Amendment No. 4 Schedule



Project: Amendment 4 - Schedule
Date: Wed 9/26/12

Task Split

Progress Milestone

Summary Project Summary

External Tasks External Milestone

Deadline

Page 1