

SUBMITTAL TO THE BOARD OF SUPERVISORS
COUNTY OF RIVERSIDE, STATE OF CALIFORNIA



701 B

FROM: TLMA - Transportation Department

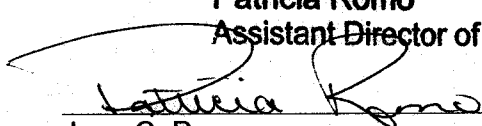
SUBMITTAL DATE:
May 9, 2013

SUBJECT: Accepting for public use, previously dedicated Public Utility Easements in the Thermal area. Fourth Supervisorial District/ Fourth Supervisorial District.

RECOMMENDED MOTION: That the Board of Supervisors adopt Resolution No. 2013-075, accepting said previously dedicated Public Utility Easements.

BACKGROUND: Public Utility Easements were offered for dedication on Parcel Map 36293-1, filed in Book 234, Pages 24 through 50, inclusive, records of Riverside County, which were not accepted for public use with the recording of the map. The applicant has requested the Public Utility Easements be accepted for public use to enable the installation of utilities within the easements to provide utility services to the parcels.

Patricia Romo
Assistant Director of Transportation


Juan C. Perez
Director of Transportation and Land Management

WJH
Attachment: Resolution No. 2013-075

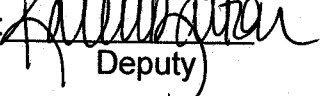
MINUTES OF THE BOARD OF SUPERVISORS

On motion of Supervisor Ashley, seconded by Supervisor Stone and duly carried, IT WAS ORDERED that the above matter is approved as recommended.

Ayes: Jeffries, Stone, Benoit and Ashley
Nays: None
Absent: Tavaglione
Date: June 4, 2013
xc: Transp., Recorder

Kecia Harper-Ihem

Clerk of the Board

By: 
Deputy

Prev. Agn. Ref.

District: 4/4

Agenda Number:

2-10

REVIEWED BY EXECUTIVE OFFICE

FORM APPROVED COUNTY COUNSEL

BY:  CYNTHIA M. GUNZEL

DATE: 5-13-13

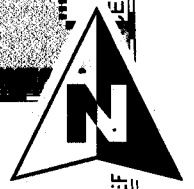
DATE: 5/15/13

DATE: 5/15/13

DATE: 5/15/13

DATE: 5/15/13

VICINITY MAP



AIRPORT N.T.S.

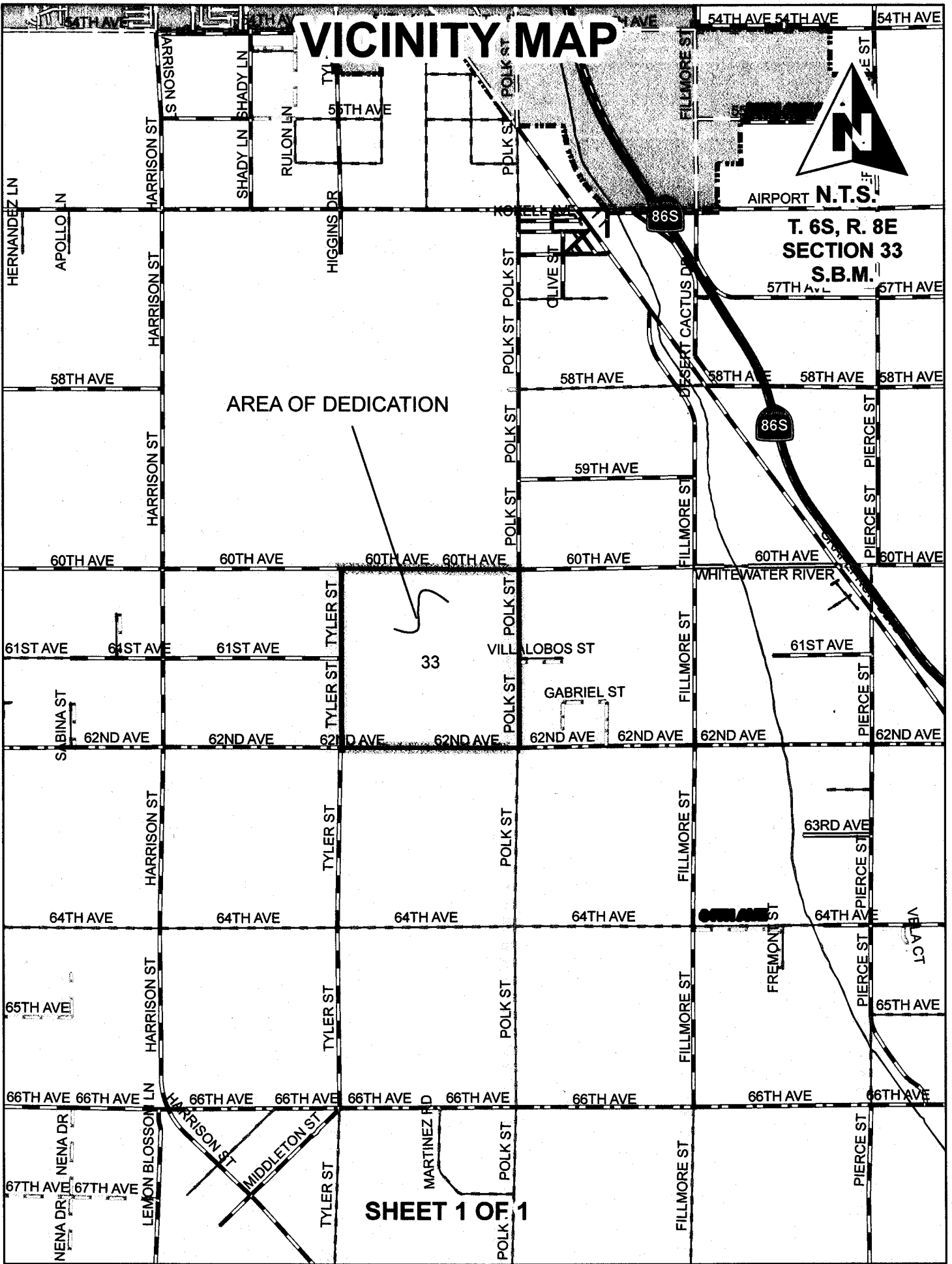
T. 6S, R. 8E
SECTION 33
S.B.M.

AREA OF DEDICATION

33

SHEET 1 OF 1

TO BE REMOVED BEFORE RECORDING



PLEASE COMPLETE THIS INFORMATION

RECORDING REQUESTED BY:

KECIA HARPER-IHEM, CLERK OF THE BOARD
RIVERSIDE CO. CLERK OF THE BOARD
4080 LEMON STREET, 1ST FLOOR CAC
P O BOX 1147 – RIVERSIDE, CA 92502

MAIL STOP # 1010

AND WHEN RECORDED MAIL TO:

RETURN TO: STOP #1010
RIVERSIDE COUNTY CLERK OF THE BOARD
P. O. BOX 1147 – RIVERSIDE, CA 92502

DOC # 2013-0267152
06/05/2013

Customer Copy Label

The paper to which this label is
affixed has not been compared
with the filed/recorded document

Larry W Ward

County of Riverside
Assessor, County Clerk & Recorder

THIS SPACE FOR RECORDERS USE ONLY

RESOLUTION NO. 2013-075

Title of Document

**ACCEPTING FOR PUBLIC USE
PREVIOUSLY DEDICATED PUBLIC UTILITY EASEMENTS
IN THE THERMAL AREA**

(FOURTH SUPERVISORIAL DISTRICT)

(Transportation Department ~ Item 2-10 of 06/04/13)

2
3 **RESOLUTION NO. 2013-075**

4
5 **ACCEPTING FOR PUBLIC USE**
6 **PREVIOUSLY DEDICATED PUBLIC UTILITY EASEMENTS**
7 **IN THE THERMAL AREA**
8 **(Fourth Supervisorial District)**

9
10 **WHEREAS**, the hereinafter described Public Utility Easements were offered for
11 dedication as "an easement for public purpose: public utility easements within Parcels 1
12 through 227, inclusive, for public utility purposes together with the right of ingress and egress"
13 by the document hereinafter-referred to, which offer of dedication has not been previously
14 accepted for public use by the County of Riverside, now, therefore;

15
16 **BE IT RESOLVED, DETERMINED AND ORDERED** by the Board of Supervisors of
17 the County of Riverside, State of California, in regular session assembled on 6/4/13,
18 2013, that this Board accepts the above mentioned Public Utility Easement to Vest Title on
19 behalf of the public for said purposes and recognizes that said Public Utility Easement is
20 open for use by the general public;

FORM APPROVED COUNTY COUNSEL
BY: Cynthia M. Gungel
DATE: 5-13-13

1 **Resolution No. 2013-075**

2
3 Said Public Utility Easement is in the County of Riverside, State of California, and is
4 described as follows:

5
6 **Public Utility Easements**

7 All of the real property dedicated as "Public Utility Easement lying within Lots 1
8 through 227, inclusive, for public utility purposes, together with the right of ingress and
9 egress", listed as Easement Number 1 under Surveyors Notes-Item No. 18 and shown
10 as 5.00 feet wide, as shown on Parcel Map 36293-1, filed in Book 234, Pages 24
11 through 50, inclusive, of Parcel Maps, Records of Riverside County, California;

12
13 **BE IT FURTHER RESOLVED** that the Clerk of the Board shall cause a certified copy of this
14 resolution to be recorded in the Office of the County Recorder of Riverside County, California.

15 **ROLL CALL:**

16 Ayes: Jeffries, Stone, Benoit and Ashley
17 Nays: None
18 Absent: Tavaglione

19 The foregoing is certified to be a true copy of a resolution duly
20 adopted by said Board of Supervisors on the date therein set forth.

21 KECIA HARPER-IHEM, Clerk of said Board

22 By: 
23 Deputy



**LARRY W. WARD
COUNTY OF RIVERSIDE
ASSESSOR-COUNTY CLERK-RECORDER**

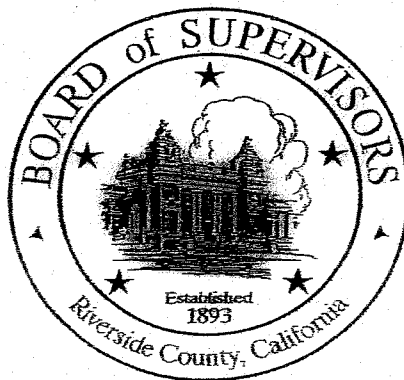
Recorder
P.O. Box 751
Riverside, CA 92502-0751
(951) 486-7000
<http://riverside.asrcclrec.com>

CERTIFICATION

Pursuant to the provisions of Government Code 27361.7, I certify under the penalty of perjury that the following is a true copy of illegible wording found in the attached document:

(Print or type the page number(s) and wording below):

CLARIFICATION OF THE SEAL for the Riverside County Board of Supervisors
(embossed on document)



Date:

6-4-13

Signature:

Karen Barton

Print Name:

Karen Barton, Board Assistant, Riverside County Clerk of the Board