

**SUBMITTAL TO THE BOARD OF SUPERVISORS
COUNTY OF RIVERSIDE, STATE OF CALIFORNIA**

975



FROM: Larry Ward, Assessor-County Clerk-Recorder

SUBMITTAL DATE:
July 1, 2014

SUBJECT: Report of 2014-2015 Assessment Roll

RECOMMENDED MOTION: That the Board of Supervisors:

1. Receive and file the attached report on the 2014-2015 local assessment roll values.

BACKGROUND:

Summary

As prescribed by California State Constitution, Revenue and Taxation Code Sections 616 and 617: by July 1, 2014, I completed the local roll and delivered it to the Auditor-Controller. I am reporting the values to the Board of Supervisors for their information.

Departmental Concurrence

Bobbi Schutte

Bobbi Schutte, Assistant Assessor-County Clerk-Recorder
For: Larry W. Ward Assessor-County Clerk-Recorder

FINANCIAL DATA	Current Fiscal Year:	Next Fiscal Year:	Total Cost:	Ongoing Cost:	POLICY/CONSENT (per Exec. Office)
COST	\$ 0	\$ 0	\$ 0	\$ 0	Consent <input checked="" type="checkbox"/> Policy <input type="checkbox"/>
NET COUNTY COST	\$ 0	\$ 0	\$ 0	\$ 0	

SOURCE OF FUNDS: NA

Budget Adjustment: NA

For Fiscal Year: NA

C.E.O. RECOMMENDATION:

APPROVE

BY: *Samuel Wong 7/6/14*
Samuel Wong

County Executive Office Signature

MINUTES OF THE BOARD OF SUPERVISORS

On motion of Supervisor Benoit, seconded by Supervisor Ashley and duly carried by unanimous vote, IT WAS ORDERED that the above matter is received and filed as recommended.

Ayes: Jeffries, Tavaglione, Stone, Benoit and Ashley
Nays: None
Absent: None
Date: July 15, 2014
xc: ACR, DP

Kecia Harper-Ihem
Clerk of the Board

By: *Kecia Harper-Ihem*
Deputy

- A-30
- Positions Added
- 4/5 Vote
- Change Order

Prev. Agn. Ref.:

District:

Agenda Number:

2-8

SUBMITTAL TO THE BOARD OF SUPERVISORS, COUNTY OF RIVERSIDE, STATE OF CALIFORNIA

FORM 11: Report of 2014-2015 Assessment Roll

DATE: July 1 , 2014

PAGE: 2 of 2

BACKGROUND:

Impact on Citizens and Businesses

By law the Assessor must locate all taxable property, determine a value for all property and apply all legal exemptions and exclusions in the County of Riverside. In addition, the Assessor must also complete the assessment roll showing the assessed values for all taxable property in Riverside County by July 1st of each year. The Assessor has completed his responsibilities in the property tax process to ensure taxpayers receive accurate and timely property tax bills, and has delivered the necessary information to the Auditor-Controller as required. The Assessor provides taxpayers and the public access to assessment roll information as prescribed by law.

SUPPLEMENTAL:

Additional Fiscal Information

N/A

Contract History and Price Reasonableness

N/A

ATTACHMENTS (if needed, in this order):

A. REPORT ON ASSESSMENT ROLL FOR 2014/2015

1. Prop 8 Totals by Use
2. Assessed Value by Supervisorial District
3. Assessed Value for Unincorporated Areas
4. Assessed Value Report
5. Assessed Value for Western Riverside County
6. Assessment Count by Use
7. Assessed Value by Base Year
8. Assessed Value for Cities
9. Assessed Values for Eastern Riverside County
10. Incorporated Areas vs. Unincorporated
11. Historical Assessed Value Data
12. Secured and Unsecured – Excluding State Assessed Properties
13. Prop 8 Totals by Tax Rate Area

RIVERSIDE COUNTY ASSESSOR

PROP. 8 TOTALS BY USE
2014/2015 TAX YEAR

USE	ASSESSMENTS REDUCED	ASSESSED VALUE REDUCTION	AVERAGE REDUCTION
RESIDENTIAL	126,441.00	15,640,872,029.00	123,701
CONDOS	22,000.00	2,175,010,749.00	98,864
MOBILEHOMES	28,180.00	1,338,659,100.00	47,504
TIMESHARES	83,667.00	659,231,505.00	7,879
AGRICULTURE	512	335,301,036.00	654,885
COMMERCIAL	3,383.00	3,098,374,867.00	915,866
APARTMENTS	629	399,332,280.00	634,868
VACANT LAND	10,757.00	2,037,015,803.00	189,367
COUNTY TOTAL	275,569	25,683,797,369	93,203

RIVERSIDE COUNTY ASSESSOR
ASSESSED VALUE BY SUPERVISORIAL DISTRICT

District	Supervisor	2014 Roll Total	2013 Roll Total	% Change
1	Kevin Jeffries	40,150,868,540	36,906,050,409	8.79%
2	John F. Tavaglione	43,259,095,726	40,384,544,480	7.12%
3	Jeff Stone	44,097,588,250	40,349,601,140	9.29%
4	John J. Benoit	69,549,142,935	65,863,528,266	5.60%
5	Marion Ashley	32,404,130,914	29,471,816,580	9.95%
Roll Totals		229,460,826,365	212,975,540,874	7.74%

RIVERSIDE COUNTY ASSESSOR
ASSESSED VALUE FOR UNINCORPORATED AREAS
2014/2015

AREA	TOTAL 2014/2015 LOCAL ROLL	LESS NON-REIMBURSED EXEMPTIONS	NET TANGIBLE VALUE	LESS HOMEOWNER'S EXEMPTIONS	2014/2015 NET TAXABLE VALUE	2013/2014 NET TAXABLE VALUE	ASSESSED VALUE CHANGE	PERCENTAGE CHANGE
Alvord	1,119,957,454	3,182,441	1,116,775,013	13,336,400	1,103,438,613	1,008,905,775	94,532,838	9.37%
Menifee	533,340,043	1,811,517	531,528,526	4,113,200	527,415,326	448,217,649	79,197,649	17.67%
Banning	843,020,440	6,885,357	836,135,083	4,634,930	831,501,053	777,543,042	53,958,011	6.94%
Beaumont	577,208,467	14,205,090	563,003,377	11,359,605	551,643,772	535,818,900	15,824,872	2.95%
Coachella	1,507,719,143	64,936,048	1,442,783,095	8,005,960	1,434,777,135	1,341,569,797	93,207,338	6.95%
Corona-Norco	3,550,960,620	19,815,548	3,531,145,072	37,289,175	3,493,855,897	3,158,879,485	334,976,412	10.60%
Palin Springs	1,929,368,125	76,635,364	1,852,732,761	25,529,391	1,827,203,370	1,785,206,959	41,996,411	2.35%
Desert Center	192,307,047	299,844	192,007,203	278,753	191,728,450	170,559,915	21,168,535	12.41%
Elsinore	1,552,483,776	25,816,875	1,526,666,901	21,536,118	1,505,130,783	1,374,780,567	130,350,216	9.48%
Colton	108,055,665	1,944,070	106,111,595	1,076,600	105,034,995	98,269,971	6,765,124	6.88%
Hemet	4,390,170,468	150,011,387	4,240,159,081	66,453,769	4,173,705,322	3,929,817,274	243,888,048	6.21%
Desert Sands	3,120,010,783	31,446,632	3,088,564,151	30,671,684	3,057,892,467	2,950,082,994	107,809,473	3.65%
Moreno	607,532,615	2,902,909	604,629,706	1,286,600	603,343,106	512,056,091	91,287,015	17.83%
Murrieta	2,149,294,652	5,255,716	2,144,038,936	11,137,000	2,132,901,936	1,985,419,628	147,482,308	7.43%
Nuview	661,039,520	5,268,298	655,771,222	9,394,955	646,376,267	610,624,858	35,751,409	5.85%
Pala Verde	550,333,422	295,369	550,038,053	2,676,967	547,361,086	528,444,784	18,916,302	3.58%
Perris	606,898,507	2,805,544	604,092,963	7,919,120	596,173,843	556,325,945	39,847,898	7.16%
Riverside	2,821,245,264	24,723,442	2,796,521,822	33,473,308	2,763,048,514	2,557,925,125	205,123,389	8.02%
Romoland	407,031,209	4,103,753	402,927,456	9,569,750	393,357,706	358,041,414	35,316,292	9.86%
San Jacinto	248,871,030	130,807,159	118,063,871	1,613,858	116,450,013	115,265,440	1,184,573	1.03%
Temecula	5,536,841,833	83,706,000	5,453,135,833	45,054,800	5,408,081,033	4,754,222,522	653,858,511	13.75%
Yucaipa	89,936,916	132,919	89,803,997	914,200	88,889,797	81,716,158	7,173,639	8.78%
Val Verde	1,439,751,928	145,179,123	1,294,572,805	14,802,458	1,279,770,347	1,111,986,392	167,783,955	15.05%
TOTALS	34,643,378,927	802,170,405	33,741,208,522	362,127,691	33,379,080,831	30,751,680,613	2,627,400,218	8.54%

RIVERSIDE COUNTY ASSESSOR
ASSESSED VALUE REPORT

YEAR	ASSESSED VALUE	% CHANGE
1980	16,071,849,720	20.88%
1979	13,295,654,108	36.16%
1978	9,764,696,244	20.86%
1977	8,079,344,032	3.18%
1976	7,830,237,072	9.27%
1975	7,166,278,652	8.46%
1974	6,607,196,092	9.39%
1973	6,040,131,224	8.34%
1972	5,575,015,120	7.89%
1971	5,167,414,916	8.86%
1970	4,747,007,044	5.82%
1969	4,486,096,824	6.70%
1968	4,204,448,280	4.44%
1967	4,025,810,600	7.25%
1966	3,753,548,620	10.36%
1965	3,401,066,840	10.90%
1964	3,066,868,936	10.16%
1963	2,783,946,392	10.65%
1962	2,515,886,760	5.90%
1961	2,375,787,640	6.25%
1960	2,235,963,520	5.68%
1959	2,115,879,600	9.27%
1958	1,936,372,720	11.21%
1957	1,741,216,000	12.93%
1956	1,541,796,760	16.79%
1955	1,320,154,360	9.17%
1954	1,209,306,840	7.21%
1953	1,127,971,172	6.51%
1952	1,058,984,680	8.25%
1951	976,256,992	7.76%
1950	907,802,800	

YEAR	ASSESSED VALUE	% CHANGE
2014	229,460,826,365	7.74%
2013	212,975,540,874	3.95%
2012	204,888,511,468	-0.15%
2011	205,187,692,180	-1.45%
2010	208,205,260,770	-4.25%
2009	217,439,570,318	-10.51%
2008	242,980,389,491	1.45%
2007	239,508,199,710	16.63%
2006	205,355,102,816	22.52%
2005	167,604,287,876	19.59%
2004	140,148,341,583	14.18%
2003	122,745,586,541	11.52%
2002	110,070,506,615	11.45%
2001	98,765,878,886	10.49%
2000	89,387,704,244	10.93%
1999	80,580,236,981	6.32%
1998	75,788,496,884	1.66%
1997	74,552,281,409	1.40%
1996	73,520,610,248	-0.71%
1995	74,047,032,777	0.47%
1994	73,703,791,959	-0.04%
1993	73,734,264,308	3.54%
1992	71,216,422,192	6.69%
1991	66,751,358,811	11.93%
1990	59,636,124,063	20.35%
1989	49,553,092,227	16.88%
1988	42,395,267,957	12.82%
1987	37,578,627,059	15.60%
1986	32,506,502,947	13.01%
1985	28,765,367,843	13.24%
1984	25,402,252,065	11.22%
1983	22,840,439,301	9.24%
1982	20,907,963,638	11.22%
1981	18,798,730,344	16.97%

RIVERSIDE COUNTY ASSESSOR
ASSESSED VALUE FOR WESTERN RIVERSIDE COUNTY
2014/2015

CITY	TOTAL 2014/2015 LOCAL ROLL	LESS NON-REIMBURSED EXEMPTIONS	NET TANGIBLE VALUE	LESS HOMEOOWNER'S EXEMPTIONS	2014/2015 NET TAXABLE VALUE	2013/2014 NET TAXABLE VALUE	ASSESSED VALUE CHANGE	PERCENTAGE CHANGE
ALVORD**	1,119,957,454	3,182,441	1,116,775,013	13,336,400	1,103,438,613	1,008,905,775	94,532,838	9.37%
BANNING	1,869,475,548	44,612,796	1,824,862,750	38,929,332	1,785,933,418	1,670,057,045	115,876,373	6.94%
BANNING**	843,020,440	6,865,357	836,155,083	4,634,030	831,501,053	777,643,042	53,858,011	6.94%
BEAUMONT	3,416,935,017	66,067,572	3,350,867,445	43,508,636	3,307,358,809	2,788,869,829	518,488,980	18.99%
BEAUMONT**	577,208,467	14,205,090	563,003,377	11,359,605	551,643,772	536,918,900	15,824,872	2.95%
CALIMESA	674,636,624	21,121,912	653,514,712	11,529,766	641,984,946	582,206,225	59,778,721	10.27%
CANYON LAKE	1,525,718,484	6,686,741	1,519,031,743	15,853,600	1,503,178,143	1,396,913,908	106,264,235	7.61%
COLTON**	108,055,665	1,944,070	106,111,595	1,076,600	105,034,995	99,269,871	6,766,124	6.88%
CORONA	17,598,946,239	301,089,975	17,297,856,264	141,975,000	17,155,880,264	16,214,683,261	941,197,003	5.80%
CORONA-NORCO**	3,550,960,620	19,815,548	3,531,145,072	37,289,175	3,493,855,897	3,158,879,485	334,976,412	10.60%
EASTVALE	7,609,946,033	18,694,486	7,591,251,547	7,591,350,548	7,540,237,137	6,610,686,788	929,651,349	14.06%
ELSINORE**	1,552,483,776	25,816,875	1,526,666,901	21,536,118	1,505,130,783	1,374,780,567	130,350,216	9.48%
HEMET	4,868,308,944	146,511,879	4,721,797,065	83,044,694	4,638,752,371	4,279,580,593	359,171,778	8.39%
HEMET**	4,390,170,468	150,011,387	4,240,159,081	66,463,769	4,173,705,322	3,929,817,274	243,888,048	6.21%
JURUPA VALLEY	7,428,487,128	67,662,296	7,360,824,832	72,110,807	7,288,714,025	6,969,700,829	319,013,196	11.15%*
LAKE ELSINORE	4,600,136,456	63,237,595	4,536,896,861	41,993,723	4,494,903,138	3,989,523,849	505,381,289	12.67%
MENIFEE	7,185,011,792	124,928,603	7,060,083,189	104,498,771	6,955,584,418	6,148,748,114	806,836,304	13.12%
MENIFEE**	533,340,043	1,811,517	531,528,526	4,113,200	527,415,326	448,217,677	79,197,649	17.67%
MORENO VALLEY	12,468,651,644	262,713,182	12,205,938,462	141,365,974	12,064,572,488	10,986,387,264	1,078,185,224	9.81%
MORENO**	607,532,615	2,902,909	604,629,706	1,286,600	603,343,106	512,056,091	91,287,015	17.83%
MURRIETA	11,273,536,150	181,604,205	11,091,925,945	109,334,732	10,982,591,213	10,066,514,471	916,076,742	9.10%
MURRIETA**	2,149,294,652	5,256,716	2,144,038,936	11,137,000	2,132,901,936	1,986,419,628	147,482,308	7.43%
NORCO	2,796,118,287	49,185,670	2,746,932,617	28,616,000	2,718,316,617	2,589,208,290	129,108,327	4.99%
NUVIEW**	661,039,520	5,286,298	655,753,222	9,394,955	646,376,267	610,624,858	35,751,409	5.85%
PERRIS	4,434,178,691	50,356,976	4,383,821,715	42,853,629	4,340,968,086	3,861,006,847	479,961,239	12.43%
PERRIS**	606,898,507	2,805,544	604,092,963	7,919,120	596,173,843	566,325,945	39,847,898	7.16%
RIVERSIDE	25,811,367,816	1,179,969,087	24,631,398,729	246,606,247	24,384,792,482	22,863,876,862	1,520,916,620	6.65%
RIVERSIDE**	2,821,245,264	24,723,442	2,796,521,822	33,473,308	2,763,048,514	2,567,925,125	205,123,389	8.02%
ROWLAND**	407,031,209	4,103,763	402,927,446	9,569,750	393,357,706	358,041,414	35,316,292	9.86%
SAN JACINTO	2,408,356,508	52,867,537	2,355,488,971	38,188,958	2,317,300,013	2,106,304,374	211,995,639	10.07%
SAN JACINTO**	248,871,030	130,807,159	118,063,871	1,613,858	116,450,013	115,265,440	1,184,573	1.03%
TEMECULA	13,547,733,082	182,877,095	13,364,855,987	108,001,310	13,256,854,677	12,318,279,559	938,575,118	7.62%
TEMECULA**	5,536,841,833	83,706,000	5,453,135,833	45,064,800	5,408,081,033	4,764,222,522	643,858,511	13.75%
VAL VERDE**	1,439,761,928	145,179,123	1,294,582,805	14,802,458	1,279,770,347	1,111,986,392	167,783,955	15.09%
WILDOMAR	2,693,179,508	76,819,916	2,616,359,592	34,997,920	2,581,361,672	2,264,126,480	317,235,192	14.01%
YUCAIPA**	89,936,916	132,919	89,803,997	914,200	88,889,797	81,716,158	7,173,639	8.78%
Totals	159,454,356,358	3,525,464,672	155,928,891,686	1,649,487,446	154,279,404,240	141,681,388,752	12,598,015,488	8.89%

** Denotes an unincorporated area

RIVERSIDE COUNTY ASSESSOR

ASSESSMENT COUNT BY USE

2014/2015 TAX YEAR

USE	ASSESSMENT COUNT	ASSESSMENT COUNT	ASSESSMENT COUNT	ASSESSED VALUE	%
BUSINESS PERSONAL PROPERTY	26,238			7,453,413,546	3.2%
MINING CLAIMS	28			786,132	0.0%
AIRCRAFT	1,122			182,509,861	0.1%
BOATS	6,282			83,099,849	0.0%
RESIDENTIAL	522,574			138,386,778,118	60.3%
CONDOS	64,447			13,607,259,483	5.9%
MOBILEHOMES	65,232			4,351,934,006	1.9%
TIMESHARES	102,020			723,975,717	0.3%
AGRICULTURE	7,844			2,837,098,070	1.2%
COMMERCIAL	27,570			43,110,284,015	18.8%
APARTMENTS	5,006			7,646,418,856	3.3%
VACANT LAND	114,739			11,077,268,712	4.8%

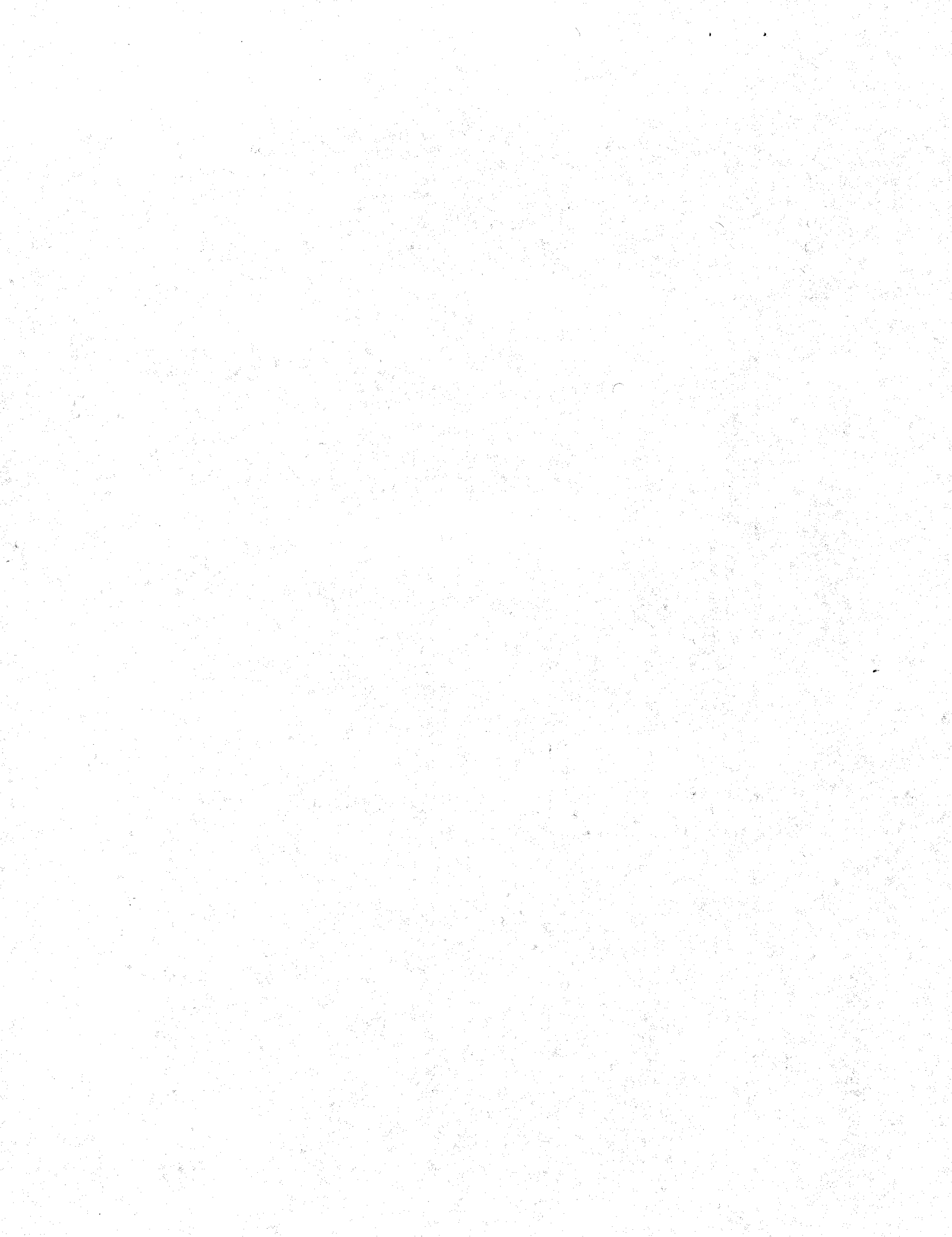
COUNTY TOTAL	943,102			229,460,826,365	
---------------------	----------------	--	--	------------------------	--

RIVERSIDE COUNTY ASSESSOR
ASSESSED VALUE BY BASE YEAR
2014/2015 TAX YEAR

BASE YEAR	ASSESSED VALUE		ASSESSMENT COUNT	
1975	2,173,896,930	1.0%	32,325	3.6%
1976	251,641,170	0.1%	2,891	0.3%
1977	334,640,914	0.2%	3,981	0.4%
1978	851,758,638	0.4%	5,356	0.6%
1979	456,629,972	0.2%	4,228	0.5%
1980	606,696,641	0.3%	4,826	0.5%
1981	553,713,282	0.2%	3,905	0.4%
1982	595,423,736	0.3%	3,838	0.4%
1983	484,956,815	0.2%	3,595	0.4%
1984	667,722,993	0.3%	5,796	0.6%
1985	842,166,797	0.4%	6,307	0.7%
1986	1,038,116,285	0.5%	7,655	0.8%
1987	1,540,700,427	0.7%	7,766	0.9%
1988	1,879,256,890	0.8%	8,730	1.0%
1989	2,515,678,633	1.1%	11,004	1.2%
1990	2,714,974,739	1.2%	12,809	1.4%
1991	2,335,801,390	1.1%	11,608	1.3%
1992	1,863,746,199	0.8%	8,787	1.0%
1993	2,252,345,262	1.0%	9,456	1.0%
1994	2,056,257,783	0.9%	10,335	1.1%
1995	2,356,657,709	1.1%	12,043	1.3%
1996	2,285,023,827	1.0%	13,155	1.4%
1997	2,346,627,087	1.1%	13,361	1.5%
1998	3,319,961,547	1.5%	16,335	1.8%
1999	4,163,411,334	1.9%	20,862	2.3%
2000	5,332,762,999	2.4%	23,729	2.6%
2001	5,965,557,429	2.7%	25,027	2.8%
2002	7,126,521,285	3.2%	30,169	3.3%
2003	9,498,096,369	4.3%	37,351	4.1%
2004	12,083,684,281	5.4%	47,844	5.3%
2005	13,567,000,565	6.1%	47,541	5.2%
2006	14,274,751,170	6.4%	47,224	5.2%
2007	12,780,185,083	5.8%	37,004	4.1%
2008	11,390,812,115	5.1%	31,006	3.4%
2009	13,319,053,604	6.0%	48,661	5.4%
2010	12,520,593,590	5.6%	55,792	6.1%
2011	13,388,459,759	6.0%	54,788	6.0%
2012	13,716,252,398	6.2%	52,213	5.7%
2013	15,774,135,280	7.1%	58,918	6.5%
2014	20,515,344,050	9.3%	71,211	7.8%
TOTAL	221,741,016,977		909,432	

RIVERSIDE COUNTY ASSESSOR
ASSESSED VALUE FOR CITIES
2014/2015

CITY	TOTAL 2014/2015 LOCAL ROLL	LESS NON-REIMBURSED EXEMPTIONS	NET TANGIBLE VALUE	LESS HOMEOWNER'S EXEMPTIONS	2014/2015 NET TAXABLE VALUE	2013/2014 NET TAXABLE VALUE	ASSESSED VALUE CHANGE	PERCENTAGE CHANGE
BANNING	1,869,475,548	44,612,798	1,824,862,750	38,929,332	1,785,933,418	1,670,057,045	115,876,373	6.94%
BEAUMONT	3,416,935,017	66,067,572	3,350,867,445	43,508,636	3,307,358,809	2,788,869,829	518,488,980	18.59%
BLYTHE	699,246,768	61,994,770	637,251,998	10,541,464	626,710,534	611,030,917	15,679,617	2.57%
CALLIMESA	674,636,624	21,121,912	653,514,712	11,529,766	641,984,946	582,206,225	59,778,721	10.27%
CANYON LAKE	1,525,718,484	6,686,741	1,519,031,743	15,853,600	1,503,178,143	1,396,913,908	106,264,235	7.61%
CATHEDRAL CITY	3,870,924,131	128,096,966	3,742,827,165	45,793,128	3,697,034,037	3,512,630,908	184,403,129	5.25%
COACHELLA	1,595,659,469	125,028,634	1,470,630,835	20,451,439	1,450,179,396	1,375,852,726	74,326,670	5.40%
CORONA	17,598,945,239	301,089,375	17,297,855,264	141,975,000	17,155,880,264	16,214,683,261	941,197,003	5.80%
DESERT HOT SPRINGS	1,380,178,969	48,512,814	1,331,666,155	19,076,918	1,312,589,237	1,207,549,954	105,039,283	8.70%
EASTVALE	7,609,945,033	18,594,485	7,591,350,548	51,113,411	7,540,237,137	6,610,585,788	929,651,349	14.06%
HEMET	4,868,308,944	146,511,879	4,721,797,065	83,044,694	4,638,752,371	4,279,580,593	359,171,778	8.39%
INDIAN WELLS	5,032,925,025	1,348,615	5,031,576,410	8,855,000	5,022,721,410	4,728,845,679	293,875,731	6.21%
INDIO	6,890,720,159	155,051,250	6,735,668,909	65,847,938	6,669,820,971	6,163,093,279	506,727,692	8.22%
JURUPA VALLEY	7,428,487,128	67,662,296	7,360,824,832	72,110,807	7,288,714,025	6,969,700,829	319,013,196	11.15%
LA QUINTA	11,563,348,197	144,748,505	11,418,599,692	49,253,400	11,369,346,292	10,726,752,603	642,593,689	5.99%
LAKE ELSINORE	4,600,136,456	63,237,595	4,536,898,861	41,993,723	4,494,905,138	3,989,523,849	505,381,289	12.67%
MENIFEE	7,185,011,792	124,928,603	7,060,083,189	104,498,771	6,955,584,418	6,148,749,114	806,836,304	13.12%
MORENO VALLEY	12,468,651,844	262,713,182	12,205,938,662	141,365,974	12,064,572,688	10,986,387,264	1,078,185,224	9.81%
MURRIETA	11,273,530,150	181,604,205	11,091,925,945	109,334,732	10,982,591,213	10,056,514,471	916,076,742	9.10%
NORCO	2,796,118,287	49,185,670	2,746,932,617	28,616,000	2,718,316,617	2,589,208,290	129,108,327	4.99%
PALM DESERT	13,249,946,272	162,983,367	13,086,962,905	67,834,738	13,019,128,167	12,384,892,189	634,235,978	5.12%
PALM SPRINGS	10,130,908,294	201,790,636	9,929,117,658	60,257,689	9,868,859,969	9,213,173,682	655,686,287	7.12%
PERRIS	4,434,178,691	50,356,976	4,383,821,715	42,853,629	4,340,968,086	3,861,006,847	479,961,239	12.43%
RANCHO MIRAGE	8,292,874,203	651,069,268	7,641,804,935	29,688,175	7,612,116,760	7,308,500,640	303,616,120	4.15%
RIVERSIDE	25,811,367,816	1,179,969,087	24,631,398,729	246,606,247	24,384,792,482	22,863,875,862	1,520,916,620	6.65%
SAN JACINTO	2,408,356,508	52,867,537	2,355,488,971	38,188,958	2,317,300,013	2,105,304,374	211,995,639	10.07%
TEMECULA	13,547,733,082	182,877,095	13,364,855,987	108,001,310	13,256,854,677	12,318,279,559	938,575,118	7.62%
WILDOMAR	2,693,179,508	76,819,916	2,616,359,592	34,997,920	2,581,361,672	2,264,126,480	317,235,192	14.01%
CITY TOTALS	194,917,447,438	4,577,532,349	190,339,915,089	1,732,122,399	188,607,792,690	174,937,895,165	13,669,897,525	7.81%



RIVERSIDE COUNTY ASSESSOR
ASSESSED VALUES FOR EASTERN RIVERSIDE COUNTY
2014/2015

AREA	TOTAL 2014/2015 LOCAL ROLL	LESS NON-REIMBURSED EXEMPTIONS	NET TANGIBLE VALUE	LESS HOMEOWNER'S EXEMPTIONS	2014/2015 NET TAXABLE VALUE	2013/2014 NET TAXABLE VALUE	ASSESSED VALUE CHANGE	PERCENTAGE CHANGE
BLYTHE	699,246,768	61,994,770	637,251,998	10,541,464	626,710,534	611,030,917	15,679,617	2.57%
CATHEDRAL CITY	3,870,924,131	128,096,966	3,742,827,165	45,793,128	3,697,034,037	3,512,630,908	184,403,129	5.25%
COACHELLA	1,595,659,469	125,028,634	1,470,630,835	20,451,439	1,450,179,396	1,375,852,726	74,326,670	5.40%
COACHELLA**	1,507,719,143	64,936,048	1,442,783,095	8,005,960	1,434,777,135	1,341,569,797	93,207,338	6.95%
DESERT CENTER**	192,307,047	299,644	192,007,203	276,753	191,728,450	170,559,915	21,168,535	12.41%
DESERT HOT SPRINGS	1,380,178,969	48,512,814	1,331,666,155	19,076,918	1,312,589,237	1,207,549,954	105,039,283	8.70%
DESERT SANDS**	3,120,010,783	31,446,632	3,088,564,151	30,671,684	3,057,892,467	2,950,082,994	107,809,473	3.65%
INDIAN WELLS	5,032,925,025	1,348,615	5,031,576,410	8,855,000	5,022,721,410	4,728,845,679	293,875,731	6.21%
INDIO	6,890,720,159	155,051,250	6,735,668,909	65,847,938	6,669,820,971	6,163,093,279	506,727,692	8.22%
LA QUINTA	11,563,348,197	144,748,505	11,418,599,692	49,253,400	11,369,346,292	10,726,752,603	642,593,689	5.99%
PALM DESERT	13,249,946,272	162,983,367	13,086,962,905	67,834,738	13,019,128,167	12,384,892,189	634,235,978	5.12%
PALM SPRINGS	10,130,908,294	201,790,636	9,929,117,658	60,257,689	9,868,859,969	9,213,173,682	655,686,287	7.12%
PALM SPRINGS**	1,929,368,125	76,635,364	1,852,732,761	25,529,391	1,827,203,370	1,785,206,959	41,996,411	2.35%
PALO VERDE**	550,333,422	295,369	550,038,053	2,676,967	547,361,086	528,444,784	18,916,302	3.59%
RANCHO MIRAGE	8,292,874,203	651,069,268	7,641,804,935	29,688,175	7,612,116,760	7,308,500,640	303,616,120	4.15%
TOTALS	70,006,470,007	1,854,238,082	68,152,231,925	444,762,644	67,707,469,281	64,008,187,026	3,699,282,255	5.76%

** Indicates an Unincorporated Area

RIVERSIDE COUNTY ASSESSOR

2014/2015 COMPARED TO 2013/2014
INCORPORATED AREAS VS. UNINCORPORATED

INCORPORATED AREAS (CITIES)

	CITIES 2014/2015	CITIES 2013/2014	GROWTH \$	GROWTH %	CITIES AS A % OF TOTAL VALUE
TOTAL VALUE (GROSS)	194,917,447,438	181,081,210,687	13,836,236,751	7.64%	84.95%
LESS: N.R. EXEMPTIONS	4,577,532,349	4,391,150,575	186,381,774		
NET TANGIBLE	190,339,915,089	176,690,060,112	13,649,854,977		
LESS: HOX	1,732,122,399	1,752,164,947	(20,042,548)		
NET TAXABLE	188,607,792,690	174,937,895,165	13,669,897,525	7.81%	84.96%

UNINCORPORATED AREAS

	UNINCORP. 2014/2015	UNINCORP. 2013/2014	GROWTH \$	GROWTH %	UNINCORP. AS A % OF TOTAL VALUE
TOTAL VALUE (GROSS)	34,543,378,927	31,894,330,187	2,649,048,740	8.31%	15.05%
LESS: N.R. EXEMPTIONS	802,170,405	775,260,136	26,910,269		
NET TANGIBLE	33,741,208,522	31,119,070,051	2,622,138,471		
LESS: HOX	362,127,691	367,389,438	(5,261,747)		
NET TAXABLE	33,379,080,831	30,751,680,613	2,627,400,218	8.54%	15.04%

TOTAL COUNTY

	TOTAL 2014/2015	TOTAL 2013/2014	GROWTH \$	GROWTH %	
TOTAL VALUE (GROSS)	229,460,826,365	212,975,540,874	16,485,285,491	7.74%	
LESS: N.R. EXEMPTIONS	5,379,702,754	5,166,410,711	213,292,043		
NET TANGIBLE	224,081,123,611	207,809,130,163	16,271,993,448	7.83%	
LESS: HOX	2,094,250,090	2,119,554,385	(25,304,295)		
NET TAXABLE	221,986,873,521	205,689,575,778	16,297,297,743	7.92%	

RIVERSIDE COUNTY ASSESSOR

HISTORICAL ASSESSED VALUE DATA

CATEGORY	2014/2015	2013/2014	2012/2013	2011/2012	2010/2011	2009/2010	2008/2009	2007/2008	2006/2007	2005/2006
LAND:	69,707,246,878	65,541,074,543	63,512,569,335	64,225,342,078	65,933,303,364	69,987,806,304	82,800,159,346	76,838,721,323	66,060,463,091	62,383,421,211
IMPROVEMENTS:	151,106,935,201	138,872,646,597	132,708,786,414	132,336,342,199	133,423,211,029	138,227,800,290	150,905,989,361	154,308,467,223	131,747,869,869	108,106,474,744
Structures	150,230,229,736	137,919,239,912	131,761,923,246	131,454,976,006	132,494,395,267	137,235,240,965	149,933,153,847	153,331,490,703	130,688,173,347	107,052,769,375
Fixtures	798,878,942	871,784,959	867,260,334	805,002,538	855,431,271	917,713,478	896,037,635	901,300,558	981,004,882	971,079,629
Tree & Vines	77,826,523	81,521,726	79,572,834	76,363,655	73,384,491	74,845,827	74,798,079	75,676,962	78,891,640	82,625,740
PERSONAL PROPERTY:	926,834,898	874,469,964	878,213,396	824,028,513	828,740,127	894,243,864	873,306,940	848,996,551	811,348,830	797,822,840
Inventory	0	0	0	0	0	0	0	0	0	0
Other	926,834,898	874,469,964	878,213,396	824,028,513	828,740,127	894,243,864	873,306,940	848,996,551	811,348,830	797,822,840
TOTAL SECURED	221,741,016,977	205,285,091,104	197,099,539,145	197,385,712,790	200,165,254,520	209,109,850,448	234,579,455,547	231,996,165,097	198,619,681,790	161,287,716,795
LAND:	1,621,687	1,895,437	2,684,365	1,233,796	2,020,661	1,879,576	2,563,758	2,466,951	2,687,874	4,281,622
IMPROVEMENTS:	3,756,525,752	3,777,343,148	3,789,163,298	3,650,346,602	3,657,624,635	3,788,442,738	3,681,812,661	3,196,471,106	2,839,266,298	2,709,284,733
Structures	201,713,840	215,462,453	237,847,434	246,609,312	274,834,636	303,694,654	274,887,848	256,457,054	225,397,697	207,403,633
Fixtures	3,554,811,912	3,561,890,695	3,551,315,864	3,403,737,290	3,382,789,999	3,484,748,084	3,406,924,813	2,939,014,052	2,613,868,691	2,501,881,206
PERSONAL PROPERTY:	3,961,661,949	3,908,211,185	3,997,124,660	4,150,398,993	4,360,360,954	4,639,397,556	4,716,557,525	4,314,076,556	3,893,466,854	3,603,002,720
Inventory	0	0	0	0	0	0	0	0	0	0
Other	3,961,661,949	3,908,211,185	3,997,124,660	4,150,398,993	4,360,360,954	4,639,397,556	4,716,557,525	4,314,076,556	3,893,466,854	3,603,002,720
TOTAL UNSECURED	7,719,809,388	7,687,449,770	7,788,972,323	7,801,979,390	8,020,006,250	8,329,719,870	8,400,933,944	7,512,014,613	6,735,421,026	6,316,569,881
TOTAL SEC. & UNSEC.	229,460,826,365	212,975,540,874	204,888,511,468	205,187,692,180	208,205,260,770	217,439,570,318	242,980,389,491	239,508,199,710	205,355,102,816	167,604,287,676
INCREASE	7.74%	3.95%	-0.15%	-1.45%	-4.25%	-10.51%	1.45%	16.63%	22.52%	19.59%

CATEGORY	2004/2005	2003/2004	2002/2003	2001/2002	2000/2001	1999/2000	1998/1999	1997/1998	1996/1997	1995/1996
LAND:	43,783,094,202	38,519,251,192	35,014,544,283	32,152,526,097	29,741,873,362	27,570,773,518	26,354,678,254	26,470,844,746	25,539,540,485	27,028,211,924
IMPROVEMENTS:	89,743,286,172	78,134,006,409	69,219,621,221	61,231,095,621	54,671,031,073	48,622,740,269	45,602,573,195	44,602,174,247	43,626,188,107	43,599,488,755
Structures	88,849,514,990	77,219,767,587	68,271,003,116	60,239,637,887	53,602,285,167	47,710,292,288	44,579,211,653	43,614,076,555	42,552,799,132	42,688,874,482
Fixtures	810,914,697	834,906,238	865,489,709	912,299,336	987,766,321	831,223,740	836,289,287	895,902,562	879,220,450	803,555,815
Tree & Vines	82,770,125	79,633,584	83,158,396	79,158,398	80,980,585	81,224,241	85,072,255	92,195,140	94,168,525	97,255,458
PERSONAL PROPERTY:	773,389,419	726,335,457	845,862,687	795,650,850	742,865,385	743,957,593	720,113,024	674,087,179	621,245,668	655,911,466
Inventory	0	0	0	0	0	0	0	0	0	0
Other	773,389,419	726,335,457	845,862,687	795,650,850	742,865,385	743,957,593	720,113,024	674,087,179	621,245,668	655,911,466
TOTAL SECURED	134,299,739,793	117,379,593,068	105,080,028,191	94,179,272,968	85,155,769,820	76,937,471,390	72,577,364,473	71,747,106,172	70,686,974,460	71,283,609,145
LAND:	5,008,543	6,243,086	8,934,327	12,522,538	13,045,528	14,360,441	16,738,911	18,388,717	29,181,736	33,884,799
IMPROVEMENTS:	2,465,145,466	2,262,677,852	2,049,095,218	1,847,112,986	1,728,799,248	1,530,720,414	1,346,201,727	1,222,956,603	1,316,786,351	1,288,826,222
Structures	213,496,347	240,869,993	243,610,927	283,903,577	235,428,559	231,603,565	213,520,217	237,634,445	292,692,481	257,894,918
Fixtures	2,251,680,119	2,021,808,059	1,805,484,291	1,563,209,409	1,473,370,689	1,299,116,829	1,132,681,510	985,322,158	1,024,093,870	1,030,931,304
PERSONAL PROPERTY:	3,378,447,781	3,097,072,446	2,932,448,879	2,726,970,794	2,490,099,648	2,097,684,746	1,848,191,773	1,563,829,917	1,487,667,701	1,440,712,611
Inventory	0	0	0	0	0	0	0	0	0	0
Other	3,378,447,781	3,097,072,446	2,932,448,879	2,726,970,794	2,490,099,648	2,097,684,746	1,848,191,773	1,563,829,917	1,487,667,701	1,440,712,611
TOTAL UNSECURED	5,948,601,790	5,365,993,483	4,990,478,424	4,586,606,318	4,231,944,424	3,642,765,601	3,211,132,411	2,805,175,237	2,833,635,768	2,763,423,632
TOTAL SEC. & UNSEC.	140,148,341,583	122,745,586,551	110,070,506,615	99,765,878,886	89,387,704,244	80,560,236,981	76,788,496,884	74,552,281,409	73,520,810,248	74,047,032,777
INCREASE	14.18%	11.52%	11.45%	10.49%	10.93%	6.32%	1.66%	1.40%	-0.71%	0.47%

Total Assessed Prior to Exemptions

RIVERSIDE COUNTY ASSESSOR

2014/2015 Compared to 2013/2014

SECURED AND UNSECURED - EXCLUDING STATE ASSESSED PROPERTIES

CATEGORY	SECURED		UNSECURED	
	2014/2015	2013/2014	2014/2015	2013/2014
LAND	69,707,246,978	65,541,074,543	1,621,687	1,895,437
IMPROVEMENTS:				
STRUCTURES	150,230,229,736	137,919,239,912	201,713,840	215,452,453
FIXTURES	796,878,942	871,784,959	3,554,811,912	3,561,890,695
TREES & VINES	77,826,523	81,521,726	0	0
PERSONAL PROPERTY	926,834,898	874,469,964	3,961,661,949	3,908,211,185
TOTAL	221,741,016,977	205,288,091,104	7,719,809,388	7,687,449,770
LESS:N.R.EXEMPTIONS	5,146,567,104	4,923,155,135	233,115,650	243,255,576
NET TANGIBLE	216,594,429,873	200,364,935,969	7,486,693,738	7,444,194,194
LESS: HOX	2,094,250,090	2,119,554,385	0	0
NET TAXABLE	214,500,179,783	198,245,381,584	7,486,693,738	7,444,194,194

CATEGORY	TOTAL		VALUE CHANGE	PERCENTAGE CHANGE
	2014/2015	2013/2014		
LAND	69,708,868,565	65,542,969,980	4,165,898,585	
IMPROVEMENTS:				
STRUCTURES	150,431,943,576	138,134,692,365	12,297,251,211	
FIXTURES	4,353,690,854	4,433,675,654	(79,984,800)	
TREES & VINES	77,826,523	81,521,726	(3,695,203)	
PERSONAL PROPERTY	4,888,496,847	4,782,681,149	105,815,698	
TOTAL	229,460,826,365	212,975,540,874	16,485,285,491	7.74%
LESS:N.R.EXEMPTIONS	5,379,702,754	5,166,410,711	213,292,043	
NET TANGIBLE	224,081,123,611	207,809,130,163	16,271,993,448	7.83%
LESS: HOX	2,094,250,090	2,119,554,385	(25,304,295)	
NET TAXABLE	221,986,873,521	205,689,575,778	16,297,297,743	7.92%

RIVERSIDE COUNTY ASSESSOR

PROP. 8 TOTALS BY TAX RATE AREA
2014/2015 TAX YEAR

INCORPORATED AREA	TAX RATE AREA	ASSESSMENTS REDUCED	ASSESSED VALUE REDUCTION
BANNING	1	2,914	218,024,118
BEAUMONT	2	5,610	662,724,619
BLYTHE	3	1,345	74,447,890
CORONA	4	6,064	1,105,782,552
LAKE ELSINORE	5	3,916	533,613,078
HEMET	6	9,531	743,799,874
INDIO	7	13,737	984,496,091
PERRIS	8	5,132	534,471,041
RIVERSIDE	9	11,137	1,548,364,635
SAN JACINTO	10	4,567	457,809,689
PALM SPRINGS	11	19,634	1,195,226,655
COACHELLA	12	2,674	314,419,034
TEMECULA	13	6,720	1,007,844,609
DESERT HOT SPRINGS	14	3,486	340,005,304
NORCO	15	1,279	257,717,705
INDIAN WELLS	16	2,572	702,465,958
RANCHO MIRAGE	17	14,123	1,002,684,574
PALM DESERT	18	67,256	2,051,565,672
CATHEDRAL CITY	19	6,208	569,295,609
LA QUINTA	20	8,795	1,938,603,385
MORENO VALLEY	21	9,662	1,196,449,832
CALIMESA	22	1,018	74,069,115
CANYON LAKE	23	884	144,091,145
MURRIETA	24	8,352	1,176,318,072
WILDOMAR	25	2,890	361,163,269
MENIFEE	26	8,984	939,502,014
EASTVALE	27	4,522	602,579,102
JURUPA VALLEY	28	3,908	532,864,948
INCORPORATED TOTAL		236,920	21,270,399,589

COUNTY TOTAL	275,569	25,683,797,369
---------------------	----------------	-----------------------

UNINCORPORATED AREA	TAX RATE AREA	ASSESSMENTS REDUCED	ASSESSED VALUE REDUCTION
ALVORD	53	653	101,558,820
MENIFEE	54	450	72,366,175
BANNING	55	1,267	68,437,357
BEAUMONT	56	796	109,904,829
COACHELLA	58	1,827	192,404,101
CORONA-NORCO	59	3,624	361,850,014
PALM SPRINGS	61	4,546	378,613,108
DESERT CENTER	62	84	6,950,118
ELSINORE	65	1,534	176,977,191
COLTON	68	85	11,375,304
HEMET	71	8,414	815,030,492
DESERT SANDS	75	3,039	321,367,951
MORENO	80	107	31,529,230
MURRIETA	82	811	206,966,707
NUVIEW	83	914	113,387,288
PALO VERDE	85	384	13,466,176
PERRIS	87	873	102,031,153
RIVERSIDE	88	2,118	354,258,885
ROMOLAND	89	1,037	87,141,281
SAN JACINTO	91	300	27,735,793
TEMECULA	94	4,124	597,993,528
YUCAIPA	97	69	10,184,488
VAL VERDE	98	1,593	251,867,791
UNINCORPORATED TOTAL		38,649	4,413,397,780

COUNTY TOTAL	314,569	26,097,197,149
---------------------	----------------	-----------------------