

k. GMP participants may receive Sampling and Analysis Reduction sampling credit in accordance with the following conditions:

- i. Current or prior participants (group participants) of approved GMPs, who have not collected and analyzed samples from six storm events as required in Section B.7.b.i.(1), may substitute credit earned through participation in a GMP for up to four of the six required storm events. Credits for GMP participation shall be calculated as follows:
 - (1) Credit may only be earned in years of participation where the GMP participant was not scheduled to sample and the GMP was approved.
 - (2) One credit will be earned for each year of valid GMP participation.
 - (3) One additional credit may be earned for each year the overall GMP sample collection performance is greater than 75 percent.
 - ii. GMP participants substituting credit as calculated above shall provide proof of GMP participation and certification that all the conditions in Section B.12.b.i. have been met. GMP participants substituting credit in accordance with Section B.15.k.i.(3) shall also provide GMP sample collection performance documentation.
 - iii. GMP participants that qualify for Sampling and Analysis Reduction and have already sampled a storm event after October 1, 1997 shall only be required to sample one additional storm event during the remainder of this General Permit in accordance with the "Sample 2" schedule (or "Sample 1" schedule when certification filed for the wet season beginning October 1, 2001) in Table C of this Section.
- n. Group leaders shall furnish, within 60 days of receiving a request from the State Water Board or Regional Water Board, any GMP information and documentation necessary to verify the Section B.15.k. sampling credits. Group leaders may also provide this information and documentation to the group participants.

16. Watershed Monitoring Option

Regional Water Boards may approve proposals to substitute watershed monitoring for some or all of the requirements of this Section if the Regional Water Board finds that the watershed monitoring will provide substantially similar

monitoring information in evaluating facility operator compliance with the requirements of this General Permit.

TABLE D
ADDITIONAL ANALYTICAL PARAMETERS

<u>Sector</u>	<u>SIC</u>	<u>Activity Represented</u>	<u>Parameters</u>
TOR A. TIMBER PRODUCTS			
	2421	General Sawmills and Planing Mills	COD;TSS;Zn
	2491	Wood Preserving.....	As;Cu
	2411	Log Storage and Handling	TSS
	2426	Hardwood Dimension and Flooring Mills.....	COD;TSS
	2429	Special Product Sawmills, Not Elsewhere Classified	COD;TSS
	243X	Millwork, Veneer, Plywood, and Structural Wood	COD;TSS
	(except 2434-- Wood Kitchen Cabinet Manufacturers)		
	244X	Wood Containers	COD;TSS
	245X	Wood Buildings and Mobile Homes	COD;TSS
	2493	Reconstituted Wood Products.....	COD;TSS
	2499	Wood Products, Not Elsewhere Classified	
TOR B. PAPER AND ALLIED PRODUCTS MANUFACTURING			
	261X	Pulp Mills.....	
	262X	Paper Mills.....	
	263X	Paperboard Mills.....	COD
	265X	Paperboard Containers and Boxes	
	267X	Converted Paper and Paperboard Products, Except Containers and Boxes	
TOR C. CHEMICAL AND ALLIED PRODUCTS MANUFACTURING			
	281X	Industrial Inorganic Chemicals.....	Al;Fe;N+N
	282X	Plastics Materials and Synthetic Resins, Synthetic Rubber, Cellulosic, and Other Manmade Fibers Except Glass	Zn
	283X	Drugs.....	
	284X	Soaps, Detergents, and Cleaning Preparations; Perfumes, Cosmetics, and Other Toilet Preparations	N+N;Zn
	285X	Paints, Varnishes, Lacquers, Enamels, and Allied Products	
	286X	Industrial Organic Chemicals	
	287X	Nitrogenous and Phosphatic Basic Fertilizers, Mixed Fertilizer, Pesticides, and Other Agricultural Chemicals	Fe;N+N;Pb;Zn;P
	289X	Miscellaneous Chemical Products.....	
	3952	Inks and Paints, Including China Painting Enamels, India Ink, (limited to list) Drawing Ink, Platinum Paints for Burnt Wood or Leather Work, Paints for China Painting, Artist's Paints, and Artist's Watercolors.....	
TOR D. ASPHALT PAVING/ROOFING MATERIALS MANUFACTURERS AND LUBRICANT MANUFACTURERS			
	295X	Asphalt Paving and Roofing Materials	TSS
	2992	Lubricating Oils and Greases	

<u>Parameter Names</u>			
Aluminum	Cd - Cadmium	Cu - Copper	Mg - Magnesium
Arsenic	CN - Cyanide	Fe - Iron	Ag - Silver
Ammonia	Hg - Mercury	P - Phosphorus	Se - Selenium
			BOD - Biochemical Oxygen Demand
			N + N - Nitrate & Nitrite Nitrogen
			Pb - Lead

inc TSS -Total Suspended Solids COD - Chemical Oxygen Demand

ector SIC Activity Represented Parameters

TOR E. GLASS, CLAY, CEMENT, CONCRETE, AND GYPSUM PRODUCT MANUFACTURING

3211	Flat Glass.....	
322X	Glass and Glassware, Pressed or Blown	
323X	Glass Products Made of Purchased Glass	
3241	Hydraulic Cement	
325X	Structural Clay Products.....	Al
326X	Pottery and Related Products	Al
3297	Non-Clay Refractories.....	Al
327X	Concrete, Gypsum, and Plaster Products (Except Lime).....	TSS;Fe (except 3274).
3295	Minerals and Earths, Ground, or Otherwise Treated.....	TSS;Fe

TOR F. PRIMARY METALS

331X	Steel Works, Blast Furnaces, Rolling & Finishing Mill.....	Al;Zn
332X	Iron and Steel Foundries	Al;TSS;Cu;Fe;Zn
333X	Primary Smelting and Refining of Nonferrous Metals.....	
334X	Secondary Smelting and Refining of Nonferrous Metals.....	
335X	Rolling, Drawing, and Extruding of Nonferrous Metals	Cu;Zn
336X	Nonferrous Foundries (Castings).....	Cu;Zn
339X	Miscellaneous Primary Metal Products	

TOR G. METAL MINING (ORE MINING AND DRESSING) EXCEPT INACTIVE METAL MINING ACTIVITIES ON FEDERAL LANDS WHERE AN OPERATOR CANNOT BE IDENTIFIED

101X	Iron Ores	
102X	Copper Ores	TSS;COD;N+N
103X	Lead and Zinc Ores.....	
104X	Gold and Silver Ores.....	
106X	Ferroalloy Ores, Except Vanadium	
108X	Metal Mining Services.....	
109X	Miscellaneous Metal Ores	

TOR H. COAL MINES AND COAL MINING-RELATED FACILITIES

12XX	Coal Mines and Coal Mining-Related Facilities.....	TSS;Al;Fe
------	--	-----------

TOR I. COAL MINES AND COAL MINING-RELATED FACILITIES

131X	Crude Petroleum and Natural Gas	
132X	Natural Gas Liquids	
138X	Oil and Gas Field Services	

TOR J. MINERAL MINING AND DRESSING EXCEPT INACTIVE MINERAL MINING ACTIVITIES OCCURRING ON FEDERAL LANDS WHERE AN OPERATOR CANNOT BE IDENTIFIED

141X	Dimension Stone.....	TSS
142X	Crushed and Broken Stone, Including Rip Rap.....	TSS
148X	Nonmetallic Minerals, Except Fuels.....	TSS
144X	Sand and Gravel.....	TSS;N+N
145X	Clay, Ceramic, and Refractory Materials	
147X	Chemical and Fertilizer Mineral Mining	

149X Miscellaneous Nonmetallic Minerals, Except Fuels

<u>Sector</u>	<u>SIC</u>	<u>Activity Represented</u>	<u>Parameters</u>
TOR K. HAZARDOUS WASTE TREATMENT STORAGE OR DISPOSAL FACILITIES			
	4953	Hazardous Waste Treatment Storage or Disposal	NH ₃ ;Mg;COD;As Cd;CN;Pb Hg;Se;Ag

TOR L. LANDFILLS AND LAND APPLICATION SITES			
	4953	Landfills and Land Application Sites That Receive or..... Have Received Industrial Wastes, Except Inactive Landfills or Land Applications Sites Occurring on Federal Lands Where an Operator Cannot be Identified	TSS;Fe

TOR M. AUTOMOBILE SALVAGE YARDS			
	5015	Facilities Engaged in Dismantling or Wrecking Used Motor Vehicles for Parts Recycling or Resale and for Scrap	TSS;Fe;Pb;Al

TOR N. SCRAP RECYCLING FACILITIES			
	5093	Processing, Reclaiming, and Wholesale Distribution of Scrap..... and Waste Materials	TSS;Fe;Pb Al;Cu;Zn;COD

TOR O. STEAM ELECTRIC GENERATING FACILITIES			
	4911	Steam Electric Power Generating Facilities	Fe

TOR P. LAND TRANSPORTATION FACILITIES THAT HAVE VEHICLE AND EQUIPMENT MAINTENANCE SHOPS AND/OR EQUIPMENT CLEANING OPERATIONS			
	40XX	Railroad Transportation	
	41XX	Local and Highway Passenger Transportation	
	42XX	Motor Freight Transportation and Warehousing	
	43XX	United States Postal Service	
	5171	Petroleum Bulk Stations and Terminals	

TOR Q. WATER TRANSPORTATION FACILITIES THAT HAVE VEHICLE (VESSEL) & EQUIPMENT MAINTENANCE SHOPS AND/OR EQUIPMENT CLEANING OPERATIONS			
	44XX	Water Transportation	Al;Fe;Pb;Zn

TOR R. SHIP AND BOAT BUILDING OR REPAIRING YARDS			
	373X	Ship and Boat Building or Repairing Yards	

TOR S. AIR TRANSPORTATION FACILITIES			
	45XX	Air Transportation Facilities That Have Vehicle Maintenance Ships, Material Handling Facilities, Equipment Cleaning Operations, or Airport and/or Aircraft Deicing/Anti-icing Operations	BOD;COD;NH ₃ ;pH

<u>ector</u>	<u>SIC</u>	<u>Activity Represented</u>	<u>Parameters</u>
TOR T. TREATMENT WORKS			
	4952	Treatment Works Treating Domestic Sewage or Any Other Sewage Sludge or Wastewater Treatment Device or System Used in the Storage, treatment, recycling, or Reclamation of Municipal or Domestic Sewage with a Design Flow of 1.0 MGD or More or Required to Have an Approved Pretreatment Program	
TOR U. FOOD AND KINDRED PRODUCTS			
	201X	Meat Products	
	202X	Dairy Products	
	203X	Canned, Frozen and Preserved Fruits, Vegetables and Food Specialties	
	204X	Grain Mill Products	TSS
	205X	Bakery Products	
	206X	Sugar and Confectionery Products	
	207X	Fats and Oils	BOD; COD; TSS; N+N
	208X	Beverages	
	209X	Miscellaneous Food Preparations and Kindred Products	
	21XX	Tobacco Products	
TOR V. TEXTILE MILLS, APPAREL, AND OTHER FABRIC PRODUCT MANUFACTURING			
	22XX	Textile Mill Products	
	23XX	Apparel and Other Finished Products Made From Fabrics and Similar Materials	
TOR W. FURNITURE AND FIXTURES			
	25XX	Furniture and Fixtures	
	2434	Wood Kitchen Cabinets	
TOR X. PRINTING AND PUBLISHING			
	2732	Book Printing	
	2752	Commercial Printing, Lithographic	
	2754	Commercial Printing, Gravure	
	2759	Commercial Printing, Nor Elsewhere Classified	
	2796	Platemaking and Related Services	
TOR Y. RUBBER, MISCELLANEOUS PLASTIC PRODUCTS, AND MISC. MANUFACTURING INDUSTRIES			
	301X	Tires and Inner Tubes	Zn
	302X	Rubber and Plastics Footwear	Zn
	305X	Gaskets, Packing, and Sealing Devices and Rubber and Plastics Hose and Belting	Zn
	306X	Fabricated Rubber Products, Not Elsewhere Classified	Zn
	308X	Miscellaneous Plastics Products	

<u>Sector</u>	<u>SIC</u>	<u>Activity Represented</u>	<u>Parameters</u>
	393X	Musical Instruments	
	394X	Dolls, Toys, Games, and Sporting and Athletic Goods	
	395X	Pens, Pencils, and Other Artists' Materials	
	396X	Costume Jewelry, Costume Novelties, Buttons, and Miscellaneous Notions, Except Precious Metal.....	
	399X	Miscellaneous Manufacturing Industries	

TOR Z. LEATHER TANNING AND FINISHING

	311X	Leather Tanning and Finishing.....	
	NA	Facilities that Make Fertilizer Solely From Leather Scraps and Leather Dust	

TOR AA. FABRICATED METAL PRODUCTS

	3429	Hardware, Not Elsewhere Classified	Zn;N+N;Fe;Al
	3441	Fabricated Structural Metal.....	Zn;N+N;Fe;Al
	3442	Metal Doors, Sash, Frames, Molding, and Trim.....	Zn;N+N;Fe;Al
	3443	Fabricated Plate Work (Boiler Shops)	Zn;N+N;Fe;Al
	3444	Sheet Metal Work.....	Zn;N+N;Fe;Al
	3451	Screw Machine Products.....	Zn;N+N;Fe;Al
	3452	Bolts, Nuts, Screws, Rivets, and Washers	Zn;N+N;Fe;Al
	3462	Iron and Steel Forgings	Zn;N+N;Fe;Al
	3471	Electroplating, Plating, Polishing, Anodizing, and Coloring.....	Zn;N+N;Fe;Al
	3494	Valves and Pipe Fittings, Not Elsewhere Classified	Zn;N+N;Fe;Al
	3496	Miscellaneous Fabricated Wire Products.....	Zn;N+N;Fe;Al
	3499	Fabricated Metal Products, Not Elsewhere Classified	Zn;N+N;Fe;Al
	391X	Jewelry, Silverware, and Plated Ware.....	Zn;N+N;Fe;Al
	3479	Coating, Engraving, and Allied Services	Zn;N+N

TOR AB. TRANSPORTATION EQUIPMENT, INDUSTRIAL OR COMMERCIAL MACHINERY

	35XX	Industrial and Commercial Machinery (except 357X Computer and Office Equipment).....	
	37XX	Transportation Equipment (except 373X Ship and Boat Building and Repairing	

TOR AC. ELECTRONIC, ELECTRICAL, PHOTOGRAPHIC, AND OPTICAL GOODS

	36XX	Electronic and Other Electrical Equipment and Components, Except Computer Equipment	
	38XX	Measuring, Analyzing, and Controlling Instruments; Photographic, Medical, and Optical Goods; Watches and Clocks	
	357X	Computer and Office Equipment.....	

Section C: STANDARD PROVISIONS

1. Duty to Comply

The facility operator must comply with all of the conditions of this General Permit. Any General Permit noncompliance constitutes a violation of the Clean Water Act (CWA) and the Porter-Cologne Water Quality Control Act and is grounds for (a) enforcement action for (b) General Permit termination, revocation and reissuance, or modification or (c) denial of a General Permit renewal application.

The facility operator shall comply with effluent standards or prohibitions established under Section 307(a) of the CWA for toxic pollutants within the time provided in the regulations that establish these standards or prohibitions, even if this General Permit has not yet been modified to incorporate the requirement.

2. General Permit Actions

This General Permit may be modified, revoked and reissued, or terminated for cause. The filing of a request by the facility operator for a General Permit modification, revocation and reissuance, or termination, or a notification of planned changes or anticipated noncompliance does not stay any General Permit condition.

If any toxic effluent standard or prohibition (including any schedule of compliance specified in such effluent standard or prohibition) is promulgated under Section 307(a) of the CWA for a toxic pollutant which is present in the discharge and that standard or prohibition is more stringent than any limitation on the pollutant in this General Permit, this General Permit shall be modified or revoked and reissued to conform to the toxic effluent standard or prohibition, and the facility operator so notified.

3. Need to Halt or Reduce Activity not a Defense

It shall not be a defense for a facility operator in an enforcement action that it would have been necessary to halt or reduce the general permitted activity in order to maintain compliance with the conditions of this General Permit.

4. Duty to Mitigate

The facility operator shall take all responsible steps to minimize or prevent any discharge in violation of this General Permit which has a reasonable likelihood of adversely affecting human health or the environment.

5. Proper Operation and Maintenance

The facility operator at all times shall properly operate and maintain any facilities and systems of treatment and control (and related appurtenances) which are installed or used by the facility operator to achieve compliance with the conditions of this General Permit and with the requirements of storm water pollution prevention plans (SWPPPs). Proper operation and maintenance also include adequate laboratory controls and appropriate quality assurance procedures. Proper operation and maintenance may require the operation of backup or auxiliary facilities or similar systems installed by a facility operator when necessary to achieve compliance with the conditions of this General Permit.

6. Property Rights

This General Permit does not convey any property rights of any sort, or any exclusive privileges, nor does it authorize any injury to private property or any invasion of personal rights, nor any infringement of Federal, State, or local laws or regulations.

7. Duty to Provide Information

The facility operator shall furnish the Regional Water Quality Control Board (Regional Water Board), State Water Resources Control Board (State Water Board), U.S. Environmental Protection Agency (U.S. EPA), or local storm water management agency, within a reasonable time specified by the agencies, any requested information to determine compliance with this General Permit. The facility operator shall also furnish, upon request, copies of records required to be kept by this General Permit.

8. Inspection and Entry

The facility operator shall allow the Regional Water Board, State Water Board, U.S. EPA, and local storm water management agency, upon the presentation of credentials and other documents as may be required by law, to:

- a. Enter upon the facility operator's premises where a regulated facility or activity is located or conducted or where records must be kept under the conditions of this General Permit;
- b. Have access to and copy at reasonable times any records that must be kept under the conditions of this General Permit;

- c. Inspect at reasonable times any facilities or equipment (including monitoring and control equipment) that are related to or may impact storm water discharge or authorized non-storm water discharge; and
- d. Conduct monitoring activities at reasonable times for the purpose of ensuring General Permit compliance.

9. Signatory Requirements

- a. All Notices of Intent (NOIs) submitted to the State Water Board shall be signed as follows:
 - (1) For a corporation: by a responsible corporate officer. For the purpose of this section, a responsible corporate officer means: (a) a president, secretary, treasurer, or vice-president of the corporation in charge of a principal business function, or any other person who performs similar policy or decision-making functions for the corporation; or (b) the manager of the facility if authority to sign documents has been assigned or delegated to the manager in accordance with corporate procedures;
 - (2) For a partnership or sole proprietorship: by a general partner or the proprietor, respectively; or
 - (3) For a municipality, State, Federal, or other public agency: by either a principal executive officer or ranking elected official. The principal executive officer of a Federal agency includes the chief executive officer of the agency or the senior executive officer having responsibility for the overall operations of a principal geographic unit of the agency (e.g., Regional Administrators of U.S. EPA).
- b. All reports, certifications, or other information required by the General Permit or requested by the Regional Water Board, State Water Board, U.S. EPA, or local storm water management agency shall be signed by a person described above or by a duly authorized representative. A person is a duly authorized representative only if:
 - (1) The authorization is made in writing by a person described above and retained as part of the SWPPP.
 - (2) The authorization specifies either an individual or a position having responsibility for the

overall operation of the regulated facility or activity, such as the position of manager, operator, superintendent, or position of equivalent responsibility or an individual or position having overall responsibility for named position.)

- (3) If an authorization is no longer accurate because a different individual or position has responsibility for the overall operation of the facility, a new authorization must be attached to the SWPPP prior to submittal of any reports, certifications, or information signed by the authorized representative.

10. Certification

Any person signing documents under Provision 9. above shall make the following certification:

"I certify under penalty of law that this document and all attachments were prepared under my direction or supervision in accordance with a system designed to ensure that qualified personnel properly gather and evaluate the information submitted. Based on my inquiry of the person or persons who manage the system, or those persons directly responsible for gathering the information, the information submitted is to the best of my knowledge and belief, true, accurate, and complete. I am aware that there are significant penalties for submitting false information, including the possibility of fine and imprisonment for knowing violations."

11. Reporting Requirements

- a. Planned changes: The facility operator shall give advance notice to the Regional Water Board and local storm water management agency of any planned physical alteration or additions to the general permitted facility. Notice is required under this provision only when the alteration or addition could significantly change the nature or increase the quantity of pollutants discharged.
- b. Anticipated noncompliance: The facility operator will give advance notice to the Regional Water Board and local storm water management agency of any planned changes at the permitted facility which may result in noncompliance with General Permit requirements.

- c. Compliance schedules: Reports of compliance or noncompliance with or any progress reports on interim and final requirements contained in any compliance schedule of this General Permit shall be submitted no later than 14 days following each scheduled date.
- d. Noncompliance reporting: The facility operator shall report any noncompliance at the time monitoring reports are submitted. The written submission shall contain
 - (1) a description of the noncompliance and its cause;
 - (2) the period of noncompliance, including exact dates and times, and if the noncompliance has not been corrected, the anticipated time it is expected to continue; and
 - (3) steps taken or planned to reduce and prevent recurrence of the noncompliance.

12. Oil and Hazardous Substance Liability

Nothing in this General Permit shall be construed to preclude the institution of any legal action or relieve the facility operator from any responsibilities, liabilities, or penalties to which the facility operator is or may be subject under Section 311 of the CWA.

13. Severability

The provisions of this General Permit are severable; and if any provision of this General Permit or the application of any provision of this General Permit to any circumstance is held invalid, the application of such provision to other circumstances and the remainder of this General Permit shall not be affected thereby.

14. Reopener Clause

This General Permit may be modified, revoked, and reissued, or terminated for cause due to promulgation of amended regulations, receipt of U.S. EPA guidance concerning regulated activities, judicial decision, or in accordance with 40 CFR 122.62, 122.63, 122.64, and 124.5. This General Permit may be reopened to modify the provisions regarding authorized non-storm water discharges specified in Section D. Special Conditions.

15. Penalties for Violations of General Permit Conditions.

- a. Section 309 of the CWA provides significant penalties for any person who violates a General Permit condition implementing Sections 301, 302, 306, 307 308, 318, or 405 of the CWA, or any General Permit condition or limitation implementing any such section in a General Permit issued under Section 402. Any person who

violates any General Permit condition of this General Permit is subject to a civil penalty not to exceed \$25,000 per day of such violation, as well as any other appropriate sanction provided by Section 309 of the CWA.

- b. The Porter-Cologne Water Quality Control Act also provides for civil and criminal penalties in some cases greater than those under the CWA.

16. Availability

A copy of this General Permit shall be maintained at the facility and be available at all times to the appropriate facility personnel and to Regional Water Board and local agency inspectors.

17. Transfers

This General Permit is not transferable from one facility operator to another facility operator nor may it be transferred from one location to another location. A new facility operator of an existing facility must submit an NOI in accordance with the requirements of this General Permit to be authorized to discharge under this General Permit.

18. Continuation of Expired General Permit

This General Permit continues in force and effect until a new general permit is issued or the State Water Board rescinds the General Permit. Facility operators authorized to discharge under the expiring general permit are required to file an NOI to be covered by the reissued General Permit.

19. Penalties for Falsification of Reports

Section 309(c)(4) of the CWA provides that any person who knowingly makes any false material statement, representation, or certification in any record or other document submitted or required to be maintained under this General Permit, including reports of compliance or noncompliance shall, upon conviction, be punished by a fine of not more than \$10,000 or by imprisonment for not more than two years, or by both.

FACILITIES COVERED BY THIS GENERAL PERMIT

Industrial facilities include Federal, State, municipally owned, and private facilities from the following categories:

1. FACILITIES SUBJECT TO STORM WATER EFFLUENT LIMITATIONS GUIDELINES, NEW SOURCE PERFORMANCE STANDARDS, OR TOXIC POLLUTANT EFFLUENT STANDARDS (40 Code of Federal Regulations (CFR) SUBCHAPTER N). Currently, categories of facilities subject to storm water effluent limitations guidelines are Cement Manufacturing (40 CFR Part 411), Feedlots (40 CFR Part 412), Fertilizer Manufacturing (40 CFR Part 418), Petroleum Refining (40 CFR Part 419), Phosphate Manufacturing (40 CFR Part 422), Steam Electric (40 CFR Part 423), Coal Mining (40 CFR Part 434), Mineral Mining and Processing (40 CFR Part 436), Ore Mining and Dressing (40 CFR Part 440), and Asphalt Emulsion (40 CFR Part 443).
2. MANUFACTURING FACILITIES: Standard Industrial Classifications (SICs) 24 (except 2434), 26 (except 265 and 267), 28 (except 283 and 285) 29, 311, 32 (except 323), 33, 3441, and 373.
3. OIL AND GAS/MINING FACILITIES: SICs 10 through 14 including active or inactive mining operations (except for areas of coal mining operations meeting the definition of a reclamation area under 40 CFR 434.11(l) because of performance bond issued to the facility by the appropriate Surface Mining Control and Reclamation Act (SMCRA) authority has been released, or except for area of non-coal mining operations which have been released from applicable State or Federal reclamation requirements after December 17, 1990); oil and gas exploration, production, processing, or treatment operations; or transmission facilities that discharge storm water contaminated by contact with or that has come into contact with any overburden, raw material, intermediate products, finished products, by-products, or waste products located on the site of such operations. Inactive mining operations are mined sites that are not being actively mined but which have an identifiable facility operator. Inactive mining sites do not include sites where mining claims are being maintained prior to disturbances associated with the extraction, beneficiation, or processing of mined material; or sites where minimal activities are undertaken for the sole purpose of maintaining a mining claim.
4. HAZARDOUS WASTE TREATMENT, STORAGE, OR DISPOSAL FACILITIES: Includes those operating under interim status or a general permit under Subtitle C of the Federal Resource, Conservation, and Recovery Act (RCRA).

5. LANDFILLS, LAND APPLICATION SITES, AND OPEN DUMPS: Sites that receive or have received industrial waste from any of the facilities covered by this General Permit, sites subject to regulation under Subtitle D of RCRA, and sites that have accepted wastes from construction activities (construction activities include any clearing, grading, or excavation that results in disturbance of five acres or more).
6. RECYCLING FACILITIES: SICs 5015 and 5093. These codes include metal scrapyards, battery reclaimers, salvage yards, motor vehicle dismantlers and wreckers, and recycling facilities that are engaged in assembling, breaking up, sorting, and wholesale distribution of scrap and waste material such as bottles, wastepaper, textile wastes, oil waste, etc.
7. STEAM ELECTRIC POWER GENERATING FACILITIES: Includes any facility that generates steam for electric power through the combustion of coal, oil, wood, etc.
8. TRANSPORTATION FACILITIES: SICs 40, 41, 42 (except 4221-25), 43, 44, 45, and 5171 which have vehicle maintenance shops, equipment cleaning operations, or airport deicing operations. Only those portions of the facility involved in vehicle maintenance (including vehicle rehabilitation, mechanical repairs, painting, fueling, and lubrication) or other operations identified herein that are associated with industrial activity.
9. SEWAGE OR WASTEWATER TREATMENT WORKS: Facilities used in the storage, treatment, recycling, and reclamation of municipal or domestic sewage, including land dedicated to the disposal of sewage sludge that are located within the confines of the facility with a design flow of one million gallons per day or more or required to have an approved pretreatment program under 40 CFR Part 403. Not included are farm lands, domestic gardens, or lands used for sludge management where sludge is beneficially reused and which are not physically located in the confines of the facility, or areas that are in compliance with Section 405 of the Clean Water Act.
10. MANUFACTURING FACILITIES WHERE INDUSTRIAL MATERIALS, EQUIPMENT, OR ACTIVITIES ARE EXPOSED TO STORM WATER: SICs 20, 21, 22, 23, 2434, 25, 265, 267, 27, 283, 285, 30, 31 (except 311), 323, 34 (except 3441), 35, 36, 37 (except 373), 38, 39, and 4221-4225.

STORM WATER CONTACTS FOR
THE STATE AND REGIONAL WATER BOARDS

See Storm Water Contacts at:
<http://www.swrcb.ca.gov/stormwtr/contact.html>

NOTICE OF INTENT (NOI) INSTRUCTIONS

TO COMPLY WITH STATE WATER RESOURCES CONTROL BOARD
WATER QUALITY ORDER NO. 97-03-DWC
NATIONAL POLLUTANT DISCHARGE ELIMINATION SYSTEM (NPDES)
GENERAL PERMIT NO. CAG0000001

Who Must Submit

The facility operator must submit an NOI for each industrial facility that is required by U.S. Environmental Protection Agency (U.S.EPA) regulations to obtain a storm water permit. The required industrial facilities are listed in Attachment 1 of the General Permit and are also listed in 40 Code of Federal Regulations Section 122.26(b)(14).

The facility operator is typically the owner of the business or operation where the industrial activities requiring a storm water permit occur. The facility operator is responsible for all permit related activities at the facility.

Where operations have discontinued and significant materials remain on site (such as at closed landfills), the landowner may be responsible for filing an NOI and complying with this General Permit. Landowners may also file an NOI for a facility if the landowner, rather than the facility operator, is responsible for compliance with this General Permit.

How and Where to Apply

The completed NOI form, a site map, and appropriate fee must be mailed to the State Water Resources Control Board (State Water Board) at the following address:

State Water Resources Control Board
Division of Water Quality
P.O. Box 1977
Sacramento, CA 95812-1977
Attn: Storm Water Permitting Unit

Please Note: Do not send the original or copies of the NOI submittal to the Regional Water Quality Control Board (Regional Water Board). The original NOI will be forwarded to the Regional Water Board after processing.

Do not send a copy of your Storm Water Pollution Prevention Plan (SWPPP) with your NOI submittal. Your SWPPP is to be kept on site and made available for review upon request.

STORM WATER CONTACTS FOR THE STATE AND REGIONAL WATER BOARDS

STATE WATER RESOURCES CONTROL BOARD
Division of Water Quality
Attention: Storm Water Permit Unit
P.O. Box 1977
Sacramento, CA 95812-1977
(916) 657-0919 FAX: (916) 657-1011
Contact: Bruce Fujimoto

1) NORTH COAST REGION

Benjamin D. Kor, Executive Officer
5550 Skyline Boulevard, Suite A
Santa Rosa, CA 95403
(707) 576-2220 FAX: (707) 523-0135
Contact: Nathan Quarles

2) SAN FRANCISCO BAY REGION

Loretta Kahn Bareman, Executive Officer
2101 Webster Street, Suite 500
Oakland, CA 94612
(510) 286-1235 FAX: (510) 286-1380
Contact: Tom Humley

3) CENTRAL COAST REGION

Roger W. Briggs, Executive Officer
81 Higuera Street, Suite 200
San Luis Obispo, CA 93401-5427
(805) 549-3147 FAX: (805) 543-0197
Contact: Matt Fabry

4) LOS ANGELES REGION

Lawrence P. Kolb, Acting Executive Officer
101 Centre Plaza Drive
Monterey Park, CA 91754-2156
(213) 266-7500 FAX: (213) 266-7600
Contact: Xavier Swaminathan

5) CENTRAL VALLEY REGION

Sacramento Office
Gary M. Carlton, Executive Officer
3441 Roubier Road, Suite A
Sacramento, CA 95827-3098
(916) 255-3000 FAX: (916) 255-3015
Contact: Pamela Sarksdale

5R) CENTRAL VALLEY REGION

Redding Branch Office
James C. Pedri, Supervising Engineer
415 Knollcrest Drive
Redding, CA 96002
(916) 224-4849 FAX: (916) 224-4857
Contact: Carole Grove

5C) CENTRAL VALLEY REGION

Fresno Branch Office
Loren J. Harlow, Assistant Executive Officer
3614 East Ashlan Avenue
Fresno, CA 93726
(203) 445-3116 FAX: (209) 445-5910
Contact: Darrell Svensen

6SST) LAMONTAN REGION

South Lake Tahoe Office
Harold J. Singer, Executive Officer
2501 Lake Tahoe Boulevard
South Lake Tahoe, CA 96150
(916) 542-5400 FAX: (916) 544-2271
Contact: John Short

6V) LAMONTAN REGION

Victorville Office
Hiram Basgal, Supervising Engineer
15428 Civic Drive, Suite 100
Victorville, CA 92392
(760) 241-6581 FAX: (760) 241-7108
Contact: Tom Rheiner

7) COLORADO RIVER BASIN REGION

Philip Grunberg, Executive Officer
73-720 Fred Waring Drive, Suite 100
Palm Desert, CA 92260
(760) 346-7491 FAX: (760) 341-6820
Contact: Orlando Gonzalez

8) SANTA ANA REGION

Gerard J. Thibault, Executive Officer
3737 Main Street, Suite 500
Riverside, CA 92501-3339
(909) 782-4130 FAX: (909) 781-6288
Contact: Michael Adackapara

9) SAN DIEGO REGION

John M. Robertus, Executive Officer
9771 Clairmont Mesa Boulevard, Suite A
San Diego, CA 92124
(619) 467-2952 FAX: (619) 571-6972
Contact: Gloria Fulton

When to Apply

Facility operators of existing facilities must file an NOI in accordance with these instructions by March 30, 1992. Facility operators of new facilities (those beginning operations after March 30, 1992) must file an NOI in accordance with these instructions at least 14 days prior to the beginning of operations.

Once the completed NOI, site map, and appropriate fee have been submitted to the State Water Board, your NOI will be processed and you will be issued a receipt letter with a Waste Discharge Identification (WDID) Number. Please refer to this number when you contact either the State or Regional Water Boards.

Fees

The annual fee is either \$250 or \$500 depending on the facility location. See page 7 of these directions to determine your fee. Feedlots pay a one time fee of \$2,000 for their discharge permit. Checks should be made payable to: SWRCB

The permit fee is waived for facilities that currently pay an annual fee for a National Pollutant Discharge Elimination System (NPDES) permit or Waste Discharge Requirement (WDR) permit (see Section XIII of the NOI).

Change of Information

If the information provided on the NOI or site map changes, you should report the changes to the State Water Board using an NOI form. Section I of the line-by-line instructions includes information regarding changes to the NOI.

Questions

If you have any questions completing the NOI, please call the appropriate Regional Water Board (Attachment 2) or the State Water Board at (916) 657-0919.

NOI LINE-BY-LINE INSTRUCTIONS

Please type or print your responses on the NOI. Please complete the NOI form in its entirety and sign the certification.

Section I--NOI STATUS

Check box "A" if this is a new NOI registration.

Check box "B" if you are reporting changes to the NOI (e.g., new contact person, phone number, mailing address). Include the facility WDID #. Highlight all the information that has been changed.

Please note that a change of information does not apply to a change of facility operator or a change in the location of the facility. These changes require a Notice of Termination (NOT) and submittal of a new NOI and annual fee. Contact the State Water Board or Regional Water Boards for more information on the NOT Form and instructions.

Regardless of whether you are submitting a new or revised NOI, you must complete the NOI in its entirety and the NOI must be signed.

Section II--Facility Operator Information

Part A: The facility operator is the legal entity that is responsible for all permit related compliance activities at the facility. In most cases, the facility operator is the owner of the business or operation where the industrial activity occurs. Give the legal name and the address of the person, firm, public organization, or any other entity that is responsible for complying with the General Permit.

Part B: Check the box that indicates the type of operation.

Section III--Facility Site Information

Part A: Enter the facility's official or legal name and provide the address. Facilities that do not have a street address must provide cross-streets or parcel numbers. Do not include a P.O. Box address in Part A.

Part B: Enter the mailing address of the facility if different than Part A. This address may be a P.O. Box.

The contact person should be the plant or site manager who is familiar with the facility and responsible for overseeing compliance of the General Permit requirements.

Part C: Enter the total size of the facility in either acres or square feet. Also include the percentage

of the site that is impervious (areas that water cannot soak into the ground, such as concrete, asphalt, and rooftops).

Part D:

Determine the Standard Industrial Classification (SIC) code which best identifies the industrial activity that is taking place at the facility. This information can be obtained by referring to the Standard Industrial Classification Manual prepared by the Federal Office of Management and Budget which is available at public libraries. The code you determine should identify the industrial activity that requires you to submit the NOI. (For example, if the business is high school education and the activity is school bus maintenance, the code you choose would be bus maintenance, not education.) Most facilities have only one code; however, additional spaces are provided for those facilities that have more than one activity.

Part E:

Identify the title of the industrial activity that requires you to submit the NOI (e.g., the title of SIC Code 2421 is Sawmills and Planing Mills, General). If you cannot identify the title, provide a description of the regulated activity(s).

Section IV--Address for Correspondence

Correspondence relative to the permit will be mailed occasionally. Check the box which indicates where you would like such correspondence delivered. If you want correspondence sent to another contact person or address different than indicated in Section II or Section III then include the information on an extra sheet of paper.

Section V--Billing Address Information

To continue coverage under the General Permit, the annual fee must be paid. Use this section to indicate where the annual fee invoices should be mailed. Enter the billing address if different than the address given in Sections II or III.

Section VI--Receiving Water Information

Provide the name of the receiving water where storm water discharge flows from your facility. A description of each option is included below.

1. Directly to waters of the United States: Storm water discharges directly from the facility to a river, creek, lake, ocean, etc. Enter the name of the receiving water (e.g., Boulder Creek).

2. Indirectly to waters of the United States: Storm water discharges over adjacent properties or right-of-ways prior to discharging to waters of the United States. Enter the name of the closest receiving water (e.g., Clear Creek).

Section VII--Implementation of Permit Requirements

Parts A and B: Check the boxes that best describe the status of the Storm Water Pollution Prevention Plan (SWPPP) and the Monitoring Program.

Part C: Check yes or no to questions 1 through 4. If you answer no to any question, you need to assign a person to these tasks immediately.

As a permit holder you are required to have an SWPPP and Monitoring Program in place prior to the beginning of facility operations. Failure to do so is in direct violation of the General Permit. Do not send a copy of your SWPPP with your NOI submittal.

Please refer to Sections A and B of the General Permit for additional information regarding the SWPPP and Monitoring Program.

Section VIII--Regulatory Status

In some instances, the facility may be covered under another permit from the State Water Board. If there is a current NPDES or WDR permit for the facility, list the permit number in the space provided (e.g., NPDES Permit CA0000123, WDR No. 96-960). You will not be required to pay the annual fee for the General Permit if you are already paying a fee for an NPDES or WDR permit. If the facility is not covered under a State Water Board permit, then skip to Section IX.

Section IX--Site Map

Provide a "to scale" drawing of the facility and its immediate surroundings. Include as much detail about the site as possible. At a minimum, indicate buildings, material handling and storage areas, roads, names of adjacent streets, storm water discharge points, sample collection points, and a north arrow. Whenever possible limit the map to a standard size sheet of paper (8.5" x 11" or 11" x 17"). Do not send blueprints unless you are sending one page and it meets the size limits as defined above.

A location map may also be included, especially in cases where the facility is difficult to find, but are not to be submitted as a substitute for the site map. The location map can be created from local street maps and U.S. Geological Survey (USGS) quadrangle maps, etc.

A revised site map must be submitted whenever there is a significant change in the facility layout (e.g., new building, change in storage locations, boundary change, etc.).

Section X--Certification

This section should be read by the facility operator. The certification provides assurances that the NOI and site map were completed by the facility operator in an accurate and complete fashion and with the knowledge that penalties exist for providing false information. It also requires the Responsible Party to certify that the provisions in the General Permit will be complied with.

The NOI must be signed by:

For a Corporation: a responsible corporate officer (or authorized individual).

For a Partnership or Sole Proprietorship: a general partner or the proprietor, respectively.

For a Municipality, state, or other non-Federal Public Agency: either a principal executive officer or ranking elected official.

For a Federal Agency: either the chief or senior executive officer of the agency.

AREAS OF THE STATE IN WHICH THE \$250.00 ANNUAL FEE APPLIES

Alameda County: Except MIDWAY

Contra Costa County: Except for the city of BRENTWOOD

El Dorado County: The area which drains into LAKE TAHOE

Fresno County: The cities of CLOVIS and FRESNO (and incorporated islands within the Fresno/Clovis area)

Kern County: The city of BAKERSFIELD

Los Angeles County: Except the cities of AVALON, LANCASTER, PALMDALE, and areas with zip codes 91523, 91534, 91535, 91536, 91543, 91544, 91550, 91551, 91553, 91560, and 91563

Orange County

Placer County: The area which drains into Lake Tahoe

Riverside County: The cities of AGUANGA, ALBERHILL, ANZA, BANNING, BEAUMONT, CAHUILLA, CALIMESA, CANYON LAKE, CATHEDRAL CITY, CHERRY VALLEY, CHINO, COACHELLA, COLTON, CORONA, DESERT HOT SPRINGS, EDGEMONT, ELSINORE, GILMAN HOT SPRINGS, HEMET, HIGHGROVE, HOMELAND, IDYLLWILD, INDIAN WELLS, INDIO, LA QUINTA, LAKE ELSINORE, LAKELAND VILLAGE, LAKEVIEW, MENIFEE, MIRA LOMA, MORENO, MORENO VALLEY, MOUNTAIN CENTER, MURRIETA, NORCO, NUEVO, PALM DESERT, PALM SPRINGS, PEDLEY, PERRIS, RANCHO MIRAGE, REDLANDS, RIVERSIDE, ROWLAND, RUBIDOUX, SAGE, SAN JACINTO, SUN CITY, SUNNYMEAD, TEMECULA, THOMAS MTN, WILDOMAR, WINCHESTER, WOODCREST, and VALLE VISTA

Sacramento County: Except for the city of ISLETON

San Bernardino County: The cities of ALTA LOMA, ANGELUS OAKS, BIG BEAR CITY, BIG BEAR LAKE, BLOOMINGTON, CAJON JUNCTION, CAMP ANGELUS, CHINO, CHINO HILLS, COLTON, CORONA, CUCAMONGA, DEVORE, EAST HIGHLANDS, ETOWANDA, FAWN SKIN, FONTANA, FOREST FALLS, GRAND TERRACE, GUASTI, HIGHLAND, LOMA LINDA, LOS SERRANOS, LITTLE CREEK, MENTONE, MONTCLAIR, MT. BALDY, MUSCOY, NORCO, ONTARIO, POMONA, RANCHO CUCAMONGA, REDLANDS, RIALTO, RUNNING SPRINGS, SAN BERNARDINO, SEVEN OAKS, UPLAND, and YUCAIPA

San Diego County: Except for the cities of AGUA CALIENTE SPRINGS, BORRERO, BORRERO SPRINGS, BOULEVARD, DESERT SHORES, DOS CABEZAS, JACUMBA, JULIAN, MOUNTAIN SPRING, OCOTILLO WELLS, and SAN FELIPE

San Joaquin County: The city of STOCKTON

San Mateo County

Santa Clara County: Except for the cities of BELL STATION, BOLDER CREEK, GILROY, HOLLISTER, MORGAN HILL, SAN FELIPE, SAN MARTIN, SARGENT, and SVEADAL

Solano County: The cities of FAIRFIELD and SUISUN CITY

Stanislaus County: The city of MODESTO

Ventura County: The cities of CAMARILLO, FILLMORE, MOORPARK, OJAI, OKNARD, PORT HUENEME, SAN BUENAVENTURA, SANTA PAULA, S-MI VALLEY, and THOUSAND OAKS

State of California
State Water Resources Control Board

NOTICE OF INTENT

TO COMPLY WITH THE TERMS OF THE
GENERAL PERMIT TO DISCHARGE STORM WATER
ASSOCIATED WITH INDUSTRIAL ACTIVITY (WQ ORDER No. 97-03-DWQ)
(Excluding Construction Activities)



SECTION I. NOI STATUS (please check only one box)

A. ☐ New Permittee B. ☐ Change of Information WDID # _____

SECTION II. FACILITY OPERATOR INFORMATION (See instructions)

A. NAME: _____ Phone: _____

Mailing Address: _____

City: _____ State: _____ Zip Code: _____

Contact Person: _____

B. OPERATOR TYPE:
(check one) 1. ☐ Private 2. ☐ City 3. ☐ County 4. ☐ State 5. ☐ Federal 6. ☐ Special District 7. ☐ Gov. Combo

SECTION III. FACILITY SITE INFORMATION

A. FACILITY NAME: _____ Phone: _____

Facility Location: _____ County: _____

City: _____ State: _____ Zip Code: _____

B. MAILING ADDRESS: _____

City: _____ State: _____ Zip Code: _____

Contact Person: _____

C. FACILITY INFORMATION (check one)
Total Size of Site: _____ Acres _____ Sq. Ft. _____
Percent of Site Impervious (including rooftops) _____ %

D. SIC CODE(S) OF REGULATED ACTIVITY: E. REGULATED ACTIVITY (describe each SIC code):

1. _____
2. _____
3. _____

SECTION IV. ADDRESS FOR CORRESPONDENCE

☐ Facility Operator Address ☐ Facility Mailing Address ☐ Both

SECTION V. BILLING ADDRESS INFORMATION

SEND BILL TO: <input type="checkbox"/> Facility Operator (Section II) <input type="checkbox"/> Facility (Section III) <input type="checkbox"/> Other (enter information below)		
Name: _____		Phone: _____
Mailing Address: _____		
City: _____	State: _____	Zip Code: _____
Contact Person: _____		

SECTION VI. RECEIVING WATER INFORMATION

Your facility's storm water discharges flow (check one) ☐ Directly OR ☐ Indirectly to waters of the United States.

Name of receiving water: _____
(river, lake, stream, ocean, etc.)

SECTION VII. IMPLEMENTATION OF PERMIT REQUIREMENTS

A. STORM WATER POLLUTION PREVENTION PLAN (SWPPP) (check one)
☐ A SWPPP has been prepared for this facility and is available for review.
☐ A SWPPP will be prepared and ready for review by (enter date): ____/____/____.

B. MONITORING PROGRAM (check one)
☐ A Monitoring Program has been prepared for this facility and is available for review.
☐ A Monitoring Program will be prepared and ready for review by (enter date): ____/____/____.

C. PERMIT COMPLIANCE RESPONSIBILITY
Has a person been assigned responsibility for:

1. Inspecting the facility throughout the year to identify any potential pollution problems?	YES	NO
2. Collecting storm water samples and having them analyzed?	YES	NO
3. Preparing and submitting an annual report by July 1 of each year?	YES	NO
4. Eliminating discharges other than storm water (such as equipment or vehicle wash-water) into the storm drain?	YES	NO

SECTION VIII. REGULATORY STATUS (Go to Section IX if not applicable)

A. WASTE DISCHARGE REQUIREMENT ORDER NUMBER: _____	B. NPDES PERMIT CA: . _____
--	-----------------------------

SECTION IX. SITE MAP

I HAVE ENCLOSED A SITE MAP YES <input type="checkbox"/> A new NOI submitted without a site map will be rejected.

SECTION X. CERTIFICATION

"I certify under penalty of law that this document and all attachments were prepared under my direction and supervision in accordance with a system designed to assure that qualified personnel properly gather and evaluate the information submitted. Based on my inquiry of the person or persons who manage the system, or those persons directly responsible for gathering the information, the information submitted is, to the best of my knowledge and belief, true, accurate and complete. I am aware that there are significant penalties for submitting false information, including the possibility of fine and imprisonment. In addition, I certify that the provisions of the permit, including the development and implementation of a Storm Water Pollution Prevention Plan and a Monitoring Program Plan, will be complied with."

Printed Name: _____

Signature: _____ Date: _____

Title: _____

DEFINITIONS

1. "Best Management Practices" ("BMPs") means schedules of activities, prohibitions of practices, maintenance procedures, and other management practices to prevent or reduce the pollution of waters of the United States. BMPs also include treatment measures, operating procedures, and practices to control facility site runoff, spillage or leaks, sludge or waste disposal, or drainage from raw material storage. BMPs may include any type of pollution prevention and pollution control measure necessary to achieve compliance with this General Permit.
 2. Clean Water Act (CWA) means the Federal Water Pollution Control Act enacted by Public Law 92-500 as amended by Public Laws 95-217, 95-576, 96-483, and 97-117; 33 USC. 1251 et seq.
 3. "Facility" is a collection of industrial processes discharging storm water associated with industrial activity within the property boundary or operational unit.
 4. "Non-Storm Water Discharge" means any discharge to storm sewer systems that is not composed entirely of storm water.
 5. "Significant Materials" includes, but is not limited to: raw materials; fuels; materials such as solvents, detergents, and plastic pellets; finished materials such as metallic products; raw materials used in food processing or production; hazardous substances designated under Section 101(14) of Comprehensive Environmental Response, Compensation, and Liability Act (CERCLA); any chemical facility is required to report pursuant to Section 313 of Title III of Superfund Amendments and Reauthorization Act (SARA); fertilizers; pesticides; and waste products such as ashes, slag, and sludge that have the potential to be released with storm water discharges.
 6. "Significant Quantities" is the volume, concentrations, or mass of a pollutant that can cause or threaten to cause pollution, contamination, or nuisance; adversely impact human health or the environment; and/or cause or contribute to a violation of any applicable water quality standards for the receiving water.
 7. "Significant Spills" includes, but is not limited to: releases of oil or hazardous substances in excess of reportable quantities under Section 311 of the CWA (see 40 CFR 110.10 and 117.21) or Section 102 of CERCLA (see 40 CFR 302.4).
 8. "Storm water" means storm water runoff, snow melt runoff, and storm water surface runoff and drainage. It excludes infiltration and runoff from agricultural land.
9. "Storm Water Associated with Industrial Activity" means the discharge from any conveyance which is used for collecting and conveying storm water and which is directly related to manufacturing, processing, or raw materials storage areas at an industrial plant. The term does not include discharges from facilities or activities excluded from the NPDES program. For the facilities identified in Categories 1 through 9 of Attachment 1 of this General Permit, the term includes, but is not limited to, storm water discharges from industrial plant yards; immediate access roads and rail lines used or traveled by carriers of raw materials; manufactured products, waste material, or by-products used or created by the facility; material handling sites; refuse sites; sites used for the application or disposal of process wastewaters (as defined at 40 CFR Part 401); sites used for the storage and maintenance of material handling equipment; sites used for residual treatment, storage, or disposal; shipping and receiving areas; manufacturing buildings; storage areas (including tank farms) for raw materials, and intermediate and finished products; and areas where industrial activity has taken place in the past and significant materials remain and are exposed to storm water.
- For the facilities identified in Category 10 of Attachment 1 of this General Permit, the term only includes storm water discharges from all areas listed in the previous sentence where material handling equipment or activities, raw materials, intermediate products, final products, waste materials, by-products, or industrial machinery are exposed to storm water.
- Material handling activities include the: storage, loading and unloading, transportation, or conveyance of any raw material, intermediate product, finished product, by-product, or waste product. The term excludes areas located on plant lands separate from the plant's industrial activities, such as office buildings and accompanying parking lots as long as the drainage from the excluded area is not mixed with storm water drained from the above described areas. Industrial facilities (including industrial facilities that are federally, State, or municipally owned or operated that meet the description of the facilities listed in this paragraph) include those facilities designated under 40 CFR 122.26(a)(1)(v).

ACRONYM LIST

BAT	Best Available Technology Economically Achievable
BCT	Best Conventional Pollutant Control Technology
BMPs	Best Management Practices
CERCLA	Comprehensive Environmental Response, Compensation, and Liability Act of 1980 (Federal Superfund)
CFR	Code of Federal Regulations
CWA	Clean Water Act
General Permit	General Industrial Activities Storm Water Permit
GMP	Group Monitoring Plan
NEC	No Exposure Certification
NOI	Notice of Intent
NOT	Notice of Termination
NPDES	National Pollutant Discharge Elimination System
O&G	Oil and Grease
RCRA	Resource, Conservation, and Recovery Act
Regional Water Board	Regional Water Quality Control Board
RQ	Reportable Quantity
SARA	Superfund Amendments and Reauthorization Act of 1986
SIC	Standard Industrial Classification
SMCRA	Surface Mining Control and Reclamation Act
SPCC	Spill Prevention Control and Countermeasures
State Water Board	State Water Resources Control Board
SWPPP	Storm Water Pollution Prevention Plan
TOC	Total Organic Carbon
TSS	Total Suspended Solids
U.S. EPA	U.S. Environmental Protection Agency
WDID	Waste Discharger Identification
WDRs	Waste Discharge Requirements

APPENDIX B
NOTICE OF INTENT

State of California
State Water Resources Control Board

NOTICE OF INTENT

TO COMPLY WITH THE TERMS OF THE
GENERAL PERMIT TO DISCHARGE STORM WATER
ASSOCIATED WITH INDUSTRIAL ACTIVITY (WQ ORDER No. 97-03-DWQ)
(Excluding Construction Activities)

SECTION I. NOI STATUS (please check only one box)

A. <input type="checkbox"/> New Permittee	B. <input checked="" type="checkbox"/> Change of Information WQID # 18 13 13 1S 0 0 0 6 5 9 1
---	---

SECTION II. FACILITY OPERATOR INFORMATION (See instructions)

A. NAME: USA Waste of California		Phone: 951-277-1740	
Mailing Address: 10910 Dawson Canyon Rd			
City: Corona		State: CA	Zip Code: 91719-5020
Contact Person: Mike Williams			
B. OPERATOR TYPE: (check one) 1. <input type="checkbox"/> Private Individual 2. <input checked="" type="checkbox"/> Business 3. <input type="checkbox"/> Municipal 4. <input type="checkbox"/> State 5. <input type="checkbox"/> Federal 6. <input type="checkbox"/> Other			

SECTION III. FACILITY SITE INFORMATION

A. FACILITY NAME El Sobrante Landfill		Phone: _____	
Facility Location: Same as operator		County: Riverside	
City: _____		State: CA	Zip Code: _____
B. MAILING ADDRESS: _____			
City: _____		State: _____	Zip Code: _____
Contact Person: _____			
C. FACILITY INFORMATION Total Size of Site: 1407		(check one) Acres <input checked="" type="checkbox"/> Sq. Ft. <input type="checkbox"/>	Percent of Site Impervious (including rooftops) 151 %
D. SIC CODE(S) OF REGULATED ACTIVITY: 1. 4953 2. _____ 3. _____		E. REGULATED ACTIVITY (describe each SIC code): Solid Waste Landfilling and ancillary operations _____ _____ _____	

FOR STATE USE ONLY:

--

SECTION IV. ADDRESS FOR CORRESPONDENCE

<input checked="" type="checkbox"/> Facility Operator Mailing Address (Section II)	<input type="checkbox"/> Facility Mailing Address (Section III, B.)	<input type="checkbox"/> Both
--	---	-------------------------------

SECTION V. BILLING ADDRESS INFORMATION

SEND BILL TO: <input checked="" type="checkbox"/> Facility Operator Mailing Address (Section II) <input type="checkbox"/> Facility Mailing Address (Section III, B.) <input type="checkbox"/> Other (enter information below)		
Name: _____		Phone: _____
Mailing Address: _____		
City: _____	State: _____	Zip Code: _____
Contact Person: _____		

SECTION VI. RECEIVING WATER INFORMATION

Your facility's storm water discharges flow: (check one) <input type="checkbox"/> Directly OR <input checked="" type="checkbox"/> Indirectly to waters of the United States.		
Name of receiving water: <u>Tiemessical Wash to Santa Ana River</u> <small>(river, lake, stream, ocean, etc.)</small>		

SECTION VII. IMPLEMENTATION OF PERMIT REQUIREMENTS

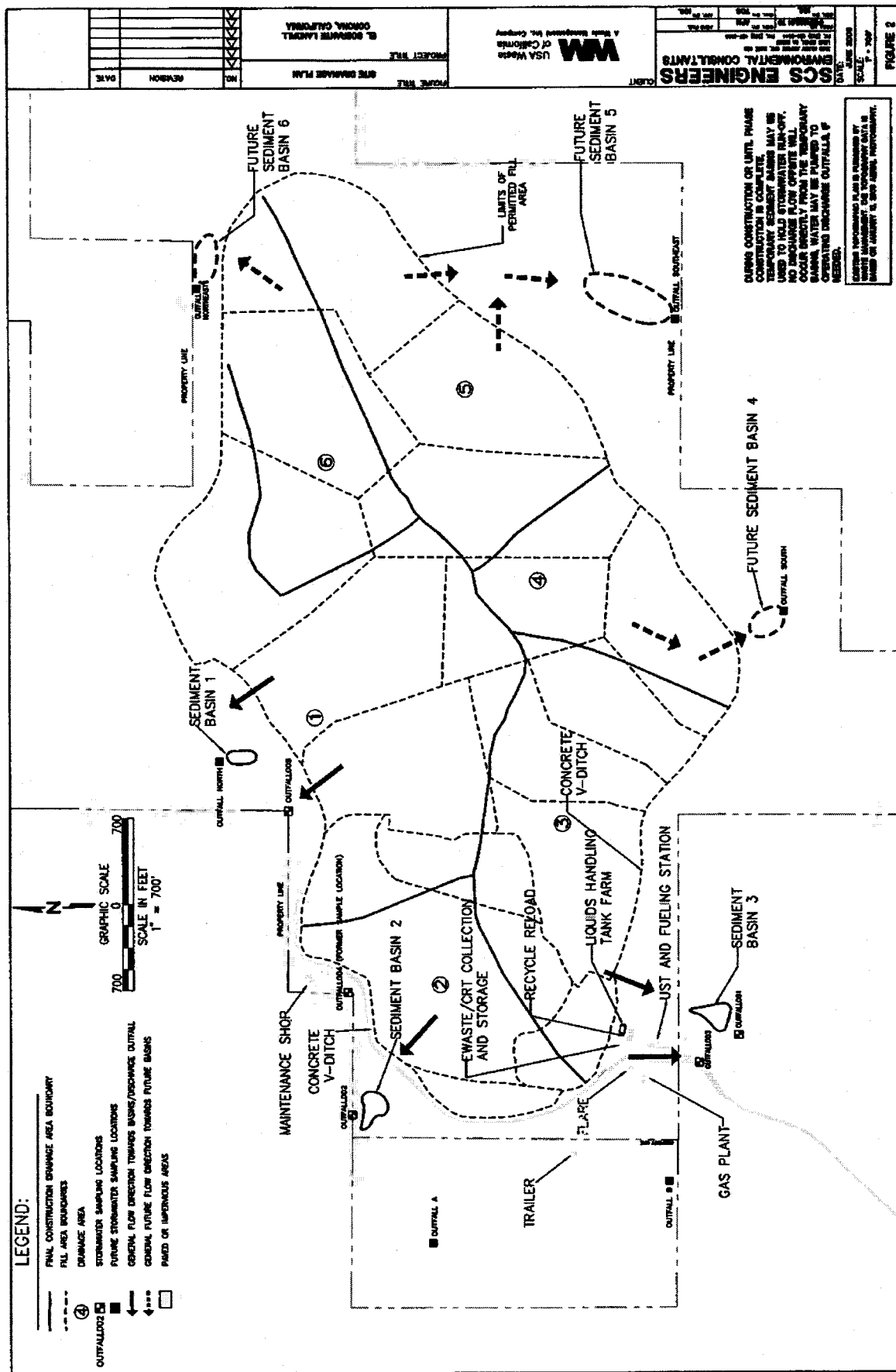
A. STORM WATER POLLUTION PREVENTION PLAN (SWPPP) (check one) <input checked="" type="checkbox"/> A SWPPP has been prepared for this facility and is available for review. <input type="checkbox"/> A SWPPP will be prepared and ready for review by (enter date): ____/____/____.	
B. MONITORING PROGRAM (check one) <input checked="" type="checkbox"/> A Monitoring Program has been prepared for this facility and is available for review. <input type="checkbox"/> A Monitoring Program will be prepared and ready for review by (enter date): ____/____/____.	
C. PERMIT COMPLIANCE RESPONSIBILITY Has a person been assigned responsibility for: 1. Inspecting the facility throughout the year to identify any potential pollution problems? <input checked="" type="checkbox"/> YES <input type="checkbox"/> NO 2. Collecting storm water samples and having them analyzed? <input checked="" type="checkbox"/> YES <input type="checkbox"/> NO 3. Preparing and submitting an annual report by July 1 of each year? <input checked="" type="checkbox"/> YES <input type="checkbox"/> NO 4. Eliminating discharges other than storm water (such as equipment or vehicle wash-water) into the storm drain? <input checked="" type="checkbox"/> YES <input type="checkbox"/> NO	

SECTION VIII. SITE MAP

I HAVE ENCLOSED A SITE MAP YES <input checked="" type="checkbox"/> A new NOI submitted without a site map will be rejected.
--

SECTION IX. CERTIFICATION

<p>"I certify under penalty of law that this document and all attachments were prepared under my direction and supervision in accordance with a system designed to assure that qualified personnel properly gather and evaluate the information submitted. Based on my inquiry of the person or persons who manage the system, or those persons directly responsible for gathering the information, the information submitted is, to the best of my knowledge and belief, true, accurate and complete. I am aware that there are significant penalties for submitting false information, including the possibility of fine and imprisonment. In addition, I certify that I have read the entire General Permit, including all attachments, and agree to comply with and be bound by all of the provisions, requirements, and prohibitions of the permit, including the development and implementation of a Storm Water Pollution Prevention Plan and a Monitoring Program Plan will be complied with."</p> <p>Printed Name: <u>Michael Williams</u></p> <p>Signature: <u>[Signature]</u> Date: <u>10/08/09</u></p> <p>Title: <u>Sr. District Manager</u></p>	
---	--





**EL SOBRANTE
LANDFILL**

A USA WASTE SERVICES COMPANY

10910 Dawson Canyon Road
Corona, CA 91719
(909) 277-1740
(909) 277-1861 Fax
(909) 876-2860 Beeper

June 29, 1998

Project No. 92-216

Stormwater NOI Processing Unit
State Water Resources Control Board
Post Office Box 1977
Sacramento, California 95812-1977

Transmittal
State of California Water Resources Control Board
Notice of Intent
To Comply with General Permit to
Discharge Stormwater Associated with
Industrial Activity (WQ Order No. 97-03-DWQ)
El Sobrante Landfill

To whom it may concern:

Enclosed is a Notice of Intent (NOI) to Comply with the General Permit to Discharge Stormwater Associated with Industrial Activity (WQ Order No. 97-03-DWQ). This submittal is in response to your memorandum dated May 13, 1998.

If you have any questions, please call.

Sincerely,

Raymond L. Grier, P.E.
District Manager

RLG/JB:jb
Enclosure

cc: Kenneth J. Floom, TRC

State of California
Water Resources Control Board

NOTICE OF INTENT

For Existing Facility Operators

**TO COMPLY WITH THE TERMS OF THE
GENERAL PERMIT TO DISCHARGE STORM WATER
ASSOCIATED WITH INDUSTRIAL ACTIVITY (WQ ORDER NO. 97-03-DWQ)**

This Notice of Intent (NOI) is being sent to all facility operators that were enrolled under the prior Industrial Storm Water General Permit that has now expired. A new General Permit has been adopted to replace the expired one. To enroll under the new General Permit, review this NOI (and make any necessary corrections), sign the CERTIFICATION on the reverse side, and return this original NOI within 45 days of receipt to: STORM WATER NOI PROCESSING UNIT, STATE WATER RESOURCES CONTROL BOARD, PO BOX 1977, SACRAMENTO, CA 95812-1977

FACILITY OPERATOR INFORMATION:

WDID#: 8 33S000559

NAME: USA WASTE OF CALIFORNIA, INC.
EL SOBRANTE LANDFILL
STREET: 10910 DAWSON CANYON ROAD

CONTACT & PHONE
RAYMOND L. GRIER, P.E.
(909) 277-1740

CITY, STATE, ZIP: CORONA, CALIFORNIA 91719-5020

FACILITY LOCATION:

County: Riverside

NAME: EL SOBRANTE LANDFILL
STREET: 10910 DAWSON CANYON ROAD

CONTACT & PHONE
RAYMOND L. GRIER, P.E.
(909) 277-1740

CITY, STATE, ZIP: CORONA, CALIFORNIA 91719-5020

FACILITY MAILING ADDRESS: (IF DIFFERENT THAN FACILITY LOCATION)

STREET OR POST OFFICE BOX: _____

CITY, STATE, ZIP: _____

ADDRESS FOR CORRESPONDENCE - SEND TO: (CHECK ONE)

☒ Facility Operator Address ☐ Facility Mailing Address ☐ Other (enter below)

NAME: USA WASTE OF CALIFORNIA, INC.
EL SOBRANTE LANDFILL
STREET: 10910 DAWSON CANYON ROAD

CITY, STATE, ZIP: CORONA, CALIFORNIA 91719-5020

CONTACT PERSON: RAYMOND L. GRIER, P.E. PHONE: (909) 277-1740

SIC(S) OF REGULATED ACTIVITY

53 Refuse Systems

Note:

Assets of Western Waste Industries have been acquired by USA Waste of California, Inc.

APPENDIX C
RESPONSIBLE OFFICIAL AUTHORIZATION

USA WASTE OF CALIFORNIA, INC.

**WRITTEN CONSENT OF
THE SOLE DIRECTOR**

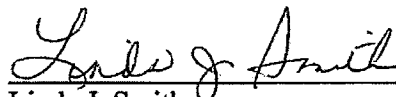
The undersigned, being the Sole Director of USA WASTE OF CALIFORNIA, INC., a Delaware corporation (the "Company"), hereby consents to the adoption of the following resolution without the necessity of holding a meeting of the Board of Directors of the Company, such resolution to have full force and effect as if adopted at a meeting of the Board of Directors of the Company duly called and held:

RESOLVED, that the Market Area Vice President, Market Area General Manager, District Manager, General Manager, Director of Operations and Market Area Manager – Environmental Protection, and each of them, for each facility owned or operated by the Company, in accordance with corporate policies and procedures and subject to specific regulatory signature requirements, are hereby authorized to prepare, execute and/or submit on behalf of the Company, as a responsible official or designated representative, any and all reports, affidavits, instruments, documents or papers, including, without limitation, any Title V Clean Air Act compliance, NPDES storm water and NPDES treatment plant discharge reports, required to be submitted by the Company with respect to such facility in order to maintain compliance with federal, state and local environmental permits, laws and regulations, and to take any required or necessary action in connection therewith, as such manager shall deem necessary or advisable, and that any such action taken to date is hereby ratified and approved; and

RESOLVED FURTHER, that the foregoing authority shall continue in full force and effect until revoked or modified by a subsequent resolution of the Board of Directors; and

RESOLVED FURTHER, that the Secretary or any Assistant Secretary of the Company may certify these resolutions to any party requesting the same to be certified.

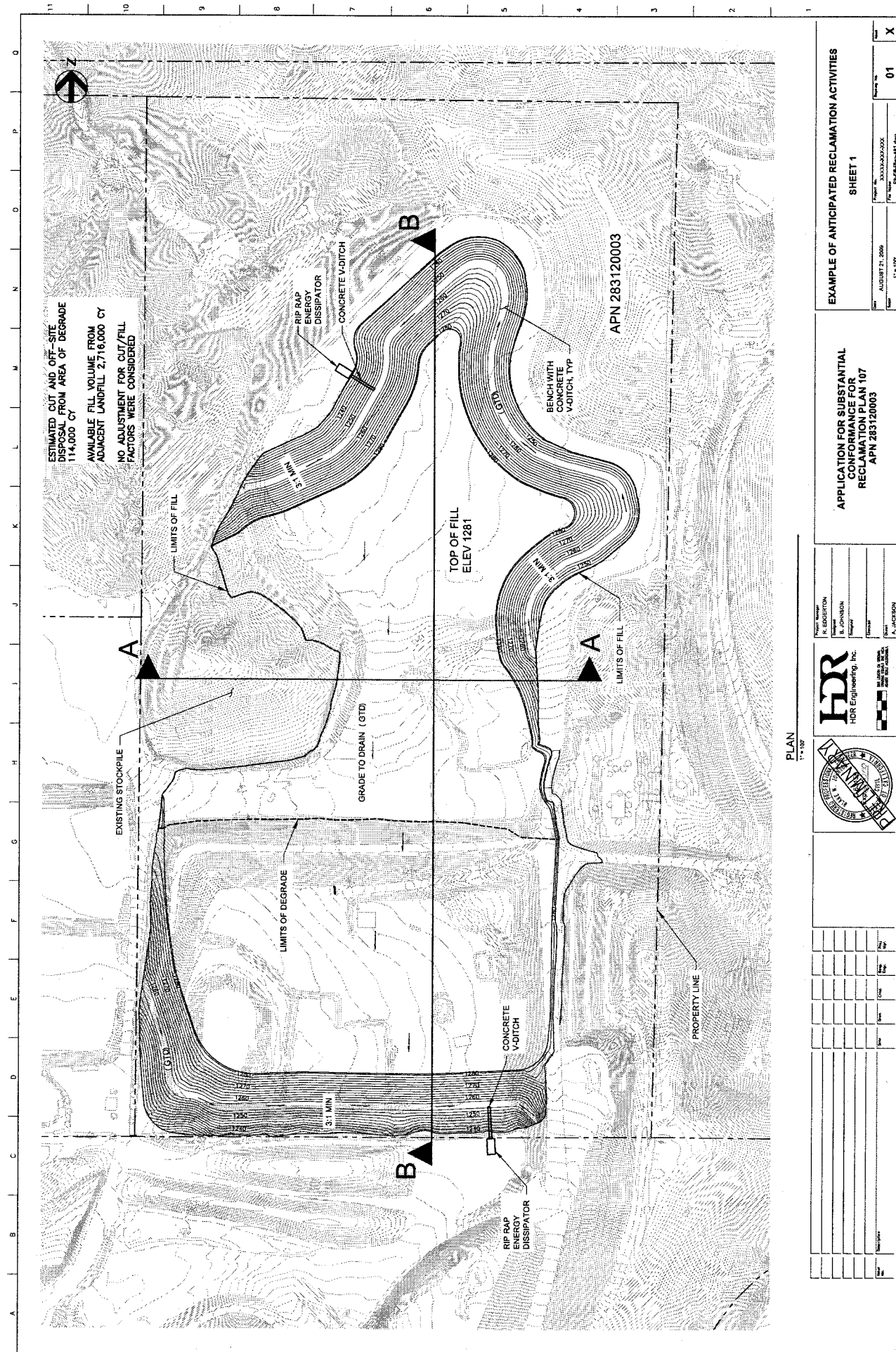
IN WITNESS WHEREOF, the undersigned has executed this consent effective this 12th day of March, 2004.



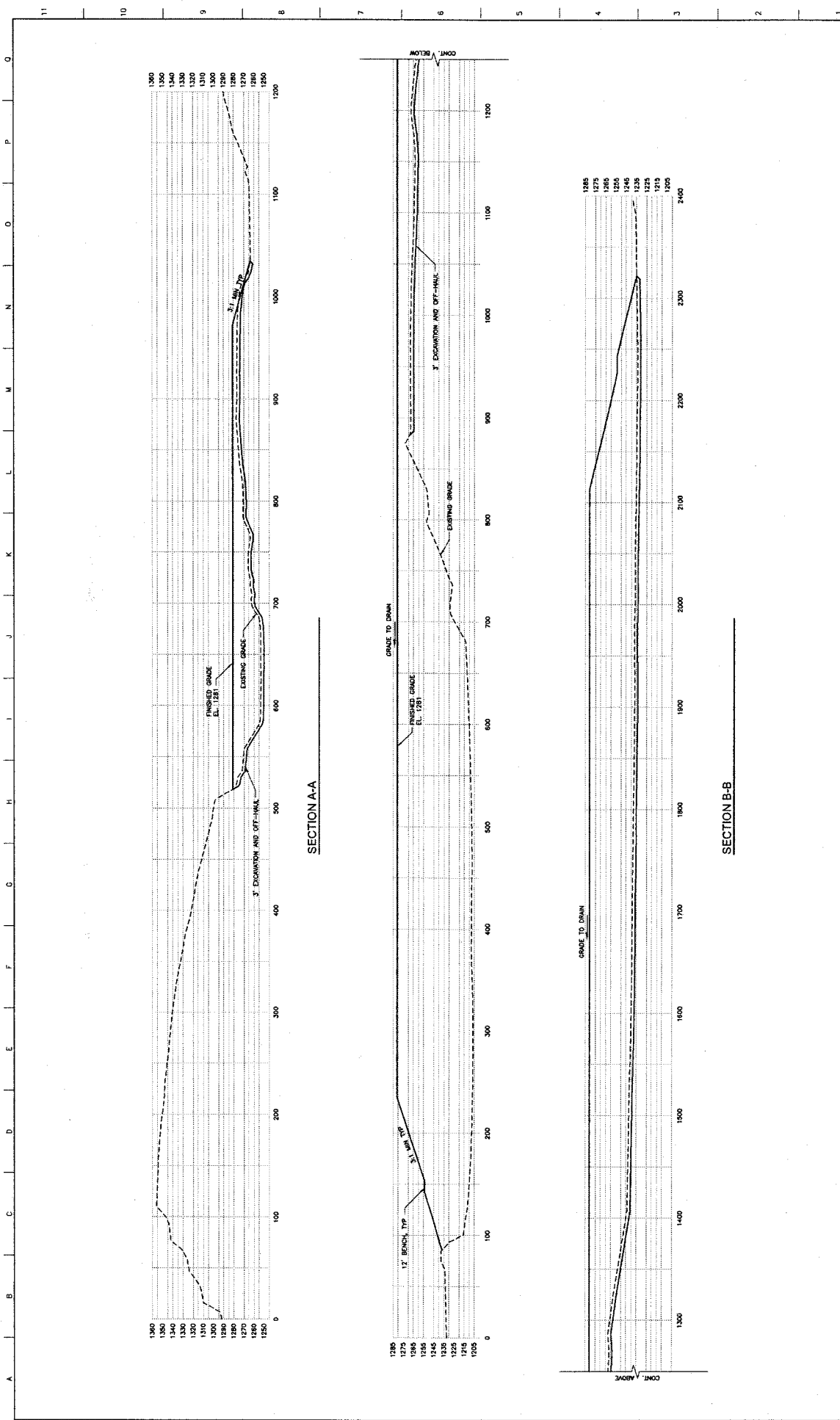
Linda J. Smith
Sole Director

APPENDIX D

SMP-107 AREA ANTICIPATED RECLAMATION ACTIVITIES



EXAMPLE OF ANTICIPATED RECLAMATION ACTIVITIES SHEET 1 AUGUST 21, 2006 1" = 100' 01 X	
APPLICATION FOR SUBSTANTIAL CONFORMANCE FOR RECLAMATION PLAN 107 APN 283120003	
Project Manager R. GORDON	Designer A. JACKSON
Checker A. JACKSON	Engineer A. JACKSON
H&R H&R Engineering, Inc. 1000 S. GATEWAY BLVD. SUITE 200 SAN JOSE, CA 95128	
PLAN 1" = 100'	



APPLICATION OF SUBSTANTIAL CONFORMANCE FOR RECLAMATION PLAN 107 APN 283120003		EXAMPLE OF ANTICIPATED RECLAMATION ACTIVITIES SHEET 2	
Project Manager B. JOHNSON Engineer B. JOHNSON Designer B. JOHNSON Checker B. JOHNSON Date 8/21/2003	Project No. 283120003	Sheet No. 02	Date 8/21/2003
Project Name 283120003			
Project Location 283120003			
Project Description 283120003			
Project Status 283120003			
Project Owner 283120003			
Project Engineer 283120003			
Project Designer 283120003			
Project Checker 283120003			
Project Date 8/21/2003			

ATTACHMENTS FILED
WITH
THE CLERK OF THE BOARD

**Riverside County Board of Supervisors
Request to Speak**

Submit request to Clerk of Board (right of podium),
Speakers are entitled to three (3) minutes, subject
to Board Rules listed on the reverse side of this form.

SPEAKER'S NAME: JERRY SINDICK

Address: JERRY SINDICK
(only if follow-up mail response requested)

City: JAMESCAL VALLEY **Zip:** _____

Phone #: _____

Date: 3/10/2015 **Agenda #** 12-3-C

PLEASE STATE YOUR POSITION BELOW:

Position on "Regular" (non-appealed) Agenda Item:

_____ **Support** _____ **Oppose** X **Neutral**

Note: If you are here for an agenda item that is filed
for "Appeal", please state separately your position on
the appeal below:

_____ **Support** _____ **Oppose** _____ **Neutral**

I give my 3 minutes to: _____

BOARD RULES

Requests to Address Board on "Agenda" Items:

You may request to be heard on a published agenda item. Requests to be heard must be submitted to the Clerk of the Board before the scheduled meeting time.

Requests to Address Board on items that are "NOT" on the Agenda:

Notwithstanding any other provisions of these rules, member of the public shall have the right to address the Board during the mid-morning "Oral Communications" segment of the published agenda. Said purpose for address must pertain to issues which are under the direct jurisdiction of the Board of Supervisors. YOUR TIME WILL BE LIMITED TO THREE (3) MINUTES.

Power Point Presentations/Printed Material:

Speakers who intend to conduct a formalized Power Point presentation or provide printed material must notify the Clerk of the Board's Office by 12 noon on the Monday preceding the Tuesday Board meeting, insuring that the Clerk's Office has sufficient copies of all printed materials and at least one (1) copy of the Power Point CD. Copies of printed material given to the Clerk (by Monday noon deadline) will be provided to each Supervisor. If you have the need to use the overhead "Elmo" projector at the Board meeting, please insure your material is clear and with proper contrast, notifying the Clerk well ahead of the meeting, of your intent to use the Elmo.

Individual Speaker Limits:

Individual speakers are limited to a maximum of three (3) minutes. Please step up to the podium when the Chairman calls your name and begin speaking immediately. Pull the microphone to your mouth so that the Board, audience, and audio recording system hear you clearly. Once you start speaking, the "green" podium light will light. The "yellow" light will come on when you have one (1) minute remaining. When you have 30 seconds remaining, the "yellow" light will begin flash, indicating you must quickly wrap up your comments. Your time is up when the "red" light flashes. The Chairman adheres to a strict three (3) minutes per speaker. ***Note: If you intend to give your time to a "Group/Organized Presentation", please state so clearly at the very bottom of the reverse side of this form.***

Group/Organized Presentations:

Group/organized presentations with more than one (1) speaker will be limited to nine (9) minutes at the Chairman's discretion. The organizer of the presentation will automatically receive the first three (3) minutes, with the remaining six (6) minutes relinquished by other speakers, as requested by them on a completed "Request to Speak" form, and clearly indicated at the front bottom of the form.

Addressing the Board & Acknowledgement by Chairman:

The Chairman will determine what order the speakers will address the Board, and will call on all speakers in pairs. The first speaker should immediately step to the podium and begin addressing the Board. The second speaker should take up a position in one of the chamber aisles in order to quickly step up to the podium after the preceding speaker. This is to afford an efficient and timely Board meeting, giving all attendees the opportunity to make their case. Speakers are prohibited from making personal attacks, and/or using coarse, crude, profane or vulgar language while speaking to the Board members, staff, the general public and/or meeting participants. Such behavior, at the discretion of the Board Chairman may result in removal from the Board Chambers by Sheriff Deputies.

**Riverside County Board of Supervisors
Request to Speak**

Submit request to Clerk of Board (right of podium),
Speakers are entitled to three (3) minutes, subject
to Board Rules listed on the reverse side of this form.

SPEAKER'S NAME: JANNLEE WATSON

Address: _____
(only if follow-up mail response requested)

City: TEMESCAL VALLEY **Zip:** 92883

Phone #: 951.277.0383

Date: 03-10-15 **Agenda #** 12-3C

PLEASE STATE YOUR POSITION BELOW:

Position on "Regular" (non-appealed) Agenda Item:

_____ **Support** _____ **Oppose** X **Neutral**

Note: If you are here for an agenda item that is filed
for "Appeal", please state separately your position on
the appeal below:

_____ **Support** _____ **Oppose** _____ **Neutral**

I give my 3 minutes to: _____

BOARD RULES

Requests to Address Board on "Agenda" Items:

You may request to be heard on a published agenda item. Requests to be heard must be submitted to the Clerk of the Board before the scheduled meeting time.

Requests to Address Board on items that are "NOT" on the Agenda:

Notwithstanding any other provisions of these rules, member of the public shall have the right to address the Board during the mid-morning "Oral Communications" segment of the published agenda. Said purpose for address must pertain to issues which are under the direct jurisdiction of the Board of Supervisors. YOUR TIME WILL BE LIMITED TO THREE (3) MINUTES.

Power Point Presentations/Printed Material:

Speakers who intend to conduct a formalized Power Point presentation or provide printed material must notify the Clerk of the Board's Office by 12 noon on the Monday preceding the Tuesday Board meeting, insuring that the Clerk's Office has sufficient copies of all printed materials and at least one (1) copy of the Power Point CD. Copies of printed material given to the Clerk (by Monday noon deadline) will be provided to each Supervisor. If you have the need to use the overhead "Elmo" projector at the Board meeting, please insure your material is clear and with proper contrast, notifying the Clerk well ahead of the meeting, of your intent to use the Elmo.

Individual Speaker Limits:

Individual speakers are limited to a maximum of three (3) minutes. Please step up to the podium when the Chairman calls your name and begin speaking immediately. Pull the microphone to your mouth so that the Board, audience, and audio recording system hear you clearly. Once you start speaking, the "green" podium light will light. The "yellow" light will come on when you have one (1) minute remaining. When you have 30 seconds remaining, the "yellow" light will begin flash, indicating you must quickly wrap up your comments. Your time is up when the "red" light flashes. The Chairman adheres to a strict three (3) minutes per speaker. ***Note: If you intend to give your time to a "Group/Organized Presentation", please state so clearly at the very bottom of the reverse side of this form.***

Group/Organized Presentations:

Group/organized presentations with more than one (1) speaker will be limited to nine (9) minutes at the Chairman's discretion. The organizer of the presentation will automatically receive the first three (3) minutes, with the remaining six (6) minutes relinquished by other speakers, as requested by them on a completed "Request to Speak" form, and clearly indicated at the front bottom of the form.

Addressing the Board & Acknowledgement by Chairman:

The Chairman will determine what order the speakers will address the Board, and will call on all speakers in pairs. The first speaker should immediately step to the podium and begin addressing the Board. The second speaker should take up a position in one of the chamber aisles in order to quickly step up to the podium after the preceding speaker. This is to afford an efficient and timely Board meeting, giving all attendees the opportunity to make their case. Speakers are prohibited from making personal attacks, and/or using coarse, crude, profane or vulgar language while speaking to the Board members, staff, the general public and/or meeting participants. Such behavior, at the discretion of the Board Chairman may result in removal from the Board Chambers by Sheriff Deputies.